

KECAMATAN

DEPOK DALAM ANGKA

2022

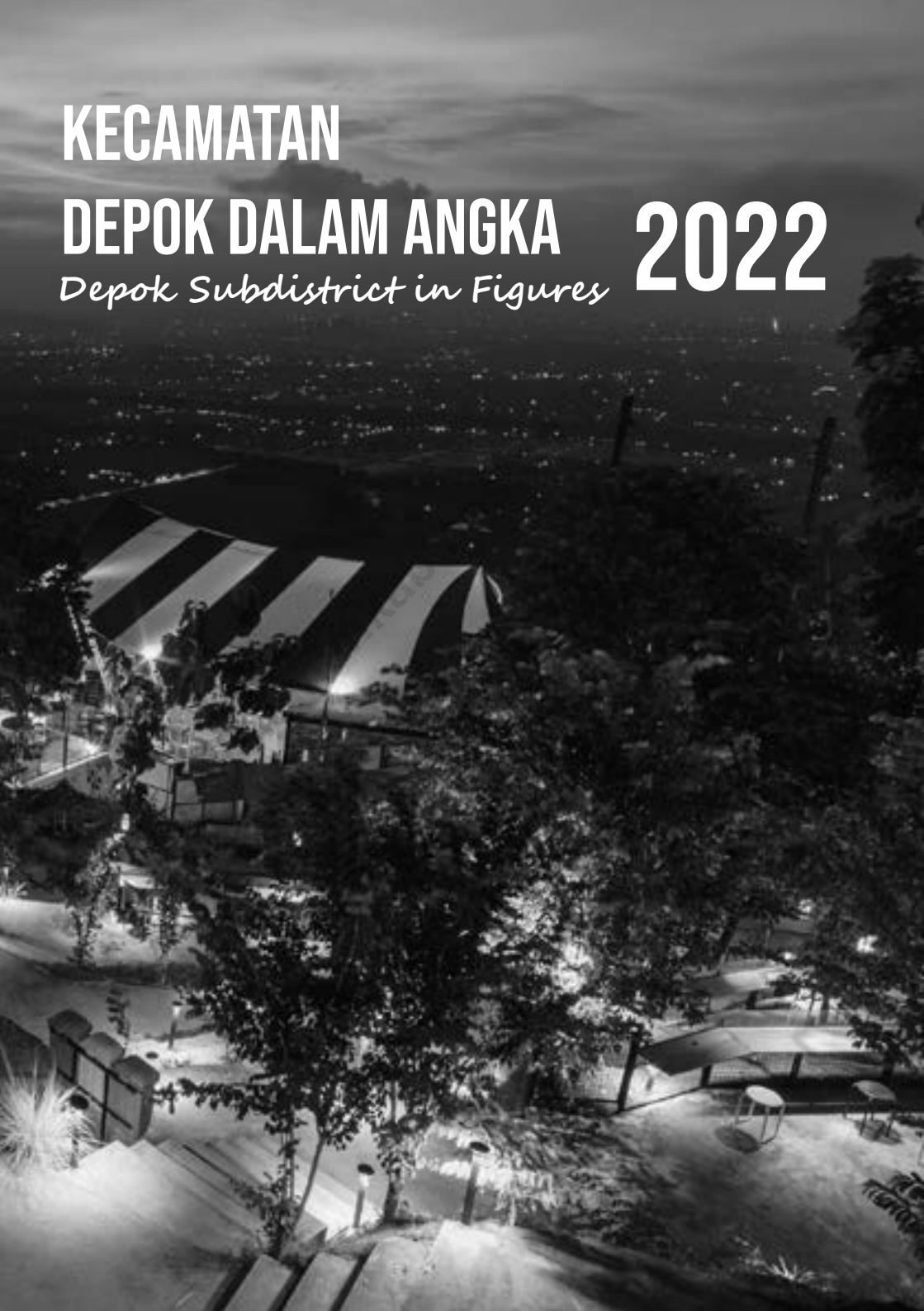
Depok Subdistrict in Figures

KECAMATAN

DEPOK DALAM ANGKA

2022

Depok Subdistrict in Figures



KABUPATEN DEPOK DALAM ANGKA
Depok Subdistrict in Figures
2022

ISSN: 2614-9966

No. Publikasi/*Publication Number*: 34040.2215

Katalog /*Catalog*: 1102001.3404070

Ukuran Buku/*Book Size*: 14,8 cm x 21 cm

Jumlah Halaman/*Number of Pages* : xxiv + 88 hal/*pages*

Naskah/*Manuscript*:

BPS Kabupaten Sleman

BPS-Statistics of Sleman Regency

Penyunting/*Editor*:

BPS Kabupaten Sleman

BPS-Statistics of Sleman Regency

Gambar Kover/*Cover Design*:

BPS Kabupaten Sleman

BPS-Statistics of Sleman Regency

Ilustrasi Kover/*Cover Illustration*:

Obelix Hills Kabupaten Sleman

Diterbitkan oleh/*Published by*:

©BPS Kabupaten Sleman/*BPS-Statistics of Sleman Regency*

Dicetak oleh/*Printed by*:

BPS Kabupaten Sleman

BPS-Statistics of Sleman Regency

Dilarang mengumumkan, mendistribusikan, mengomunikasikan, dan/atau menggandakan sebagian atau seluruh isi buku ini untuk tujuan komersil tanpa izin tertulis dari Badan Pusat Statistik.

Prohibited to announce, distribute, communicate, and/or copy part or all of this book for commercial purpose without permission from BPS-Statistics Indonesia.

TIM PENYUSUN/TEAM MEMBERS

Pengarah/Director :

Ir. Didik Koesbianto, M.Si

Penanggung Jawab/Persons in Charge :

Ir. Didik Koesbianto, M.Si

Penyunting/Editors :

BPS Kabupaten Sleman/*BPS-Statistics of Sleman Regency*

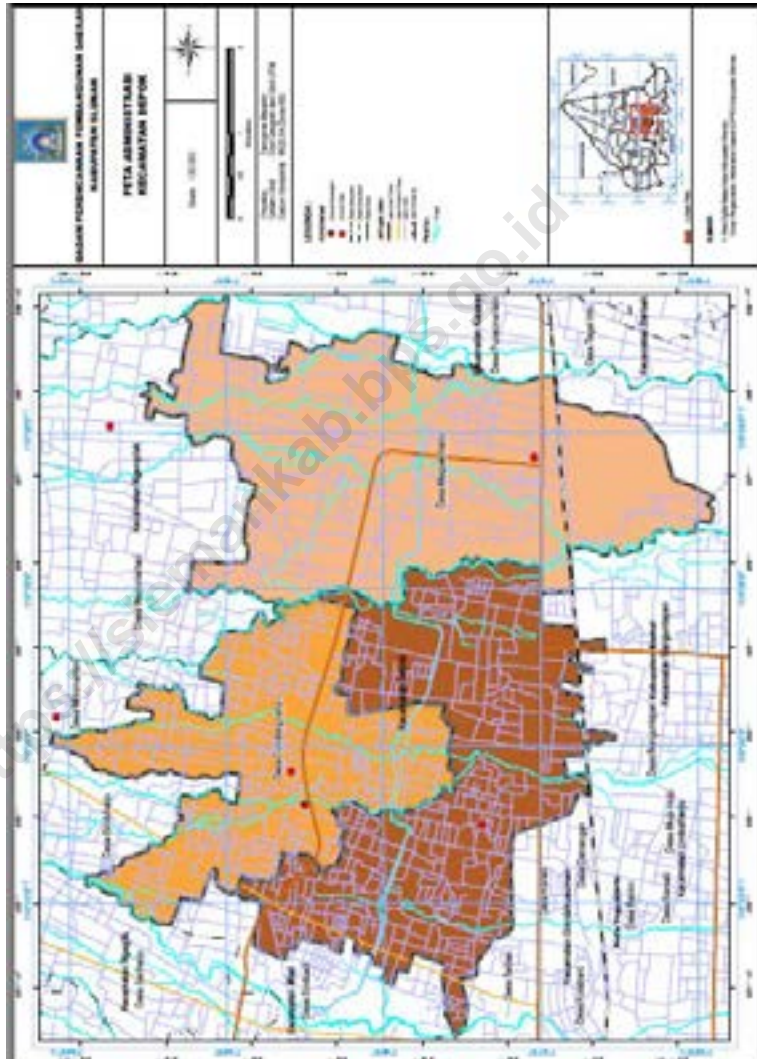
Pengolah Data dan Penulis Naskah/ Data Processing and Author :

Dhona Lestanti, S.Si. M.Si • Riyan Roserina, SST, M.Ec.Dev • Djoko Wintolo, SST,MT
• langrea Mustikane Bumi, SST • Irvan Jaya Saputra, SE, M.Sc

Penata Letak/Layout Designers:

Dhona Lestanti, S.Si, M.Si • langrea Mustikane Bumi, SST

PETA WILAYAH KECAMATAN DEPOK
MAP OF DEPOK SUBDISTRICT



KEPALA BPS KABUPATEN SLEMAN
CHIEF STATISTICIAN OF SLEMAN REGENCY



Ir. Didik Koesbianto, M.Si



KATA PENGANTAR

“Publikasi Kecamatan Depok Dalam Angka tahun 2022” merupakan publikasi yang diterbitkan setiap tahun oleh Badan Pusat Statistik (BPS) guna memenuhi kebutuhan pemakai data. Publikasi ini berisi himpunan data dari berbagai sektor sebagai gambaran umum keadaan Kecamatan Depok. Data yang disajikan merupakan data primer dari pelaksanaan kegiatan survei yang dilaksanakan oleh BPS, serta data sekunder yang bersumber dari Institusi Pemerintah maupun swasta di wilayah Kecamatan Depok.

Kelengkapan, keakuratan, dan kecepatan penyajian data yang tersusun dalam Publikasi Kecamatan Depok Dalam Angka 2022 sangat tergantung dari sumber data yang ada. Pada kesempatan ini, kami mengucapkan terima kasih kepada seluruh nara sumber atas kerjasama dan masukan datanya, semoga pada penerbitan mendatang buku ini dapat lebih berkualitas dan terbit lebih awal sesuai dengan yang kita harapkan. Tanggapan dan saran sangat diharapkan untuk menambah kesempurnaan penerbitan di masa-masa yang akan datang.

Semoga publikasi ini bermanfaat.

Sleman, September 2022
Kepala BPS
Kabupaten Sleman

Ir. Didik Koesbianto, M.Si



PREFACE

“Depok Subdistrict in figures 2022” is a routine annual publication issued by the BPS- Statistics of Sleman Regency to meet the needs of data users. This publication provides data and information from various sectors as an overview of Depok Subdistrict. The data presented are the primary data on the implementation of the survey conducted by BPS, as well as secondary data obtained from government and private institutions in the Depok Subdistrict.

Completeness, accuracy, and speed of data presentation is arranged in Depok Subdistrict of Publications In Figures 2022 is highly dependent on the source data. On this occasion, we would like to thank to all the resource persons for their cooperation and input data, hopefully in the next publication of this book may be more qualified and published earlier in accordance with what we expect. Feedback and suggestions are expected to add to the perfection of publishing in the days to come.

We hope this publication is useful.

*Sleman , September 2022
Chief Statistician of
Sleman Regency*

Ir. Didik Koesbianto, M.Si

DAFTAR ISI / CONTENTS

	Halaman <i>Page</i>
Kata Pengantar/ <i>Preface</i>	ix
Daftar Isi/ <i>Contents</i>	xi
Daftar Tabel/ <i>List of Tables</i>	xiii
Daftar Gambar/ <i>List of Figures</i>	xxi
Penjelasan Umum/ <i>Explanatory Notes</i>	xxiii
1. Geografi dan Iklim/ <i>Geography and Climate</i>	1
2. Pemerintahan/ <i>Government</i>	9
3. Penduduk/ <i>Population</i>	17
4. Sosial/ <i>Social</i>	33
5. Pertanian/ <i>Agriculture</i>	61
6. Keuangan dan Pariwisata/ <i>Finance and Tourism</i>	71
7. Transportasi dan Komunikasi/ <i>Transportation and Communication</i>	81

DAFTAR TABEL/LIST OF TABLES

Halaman
Page

1.	GEOGRAFI DAN IKLIM/GEOGRAPHY AND CLIMATE	
1.1	Batas Wilayah Kecamatan Depok, 2021 <i>Boundaries of Depok Subdistrict, 2021</i>	5
1.2	Luas Wilayah Menurut Desa Di Kecamatan Depok, 2021 <i>Total Area by Villages in Depok Subdistrict, 2021</i>	6
1.3	Nama Sungai yang Melintasi Kecamatan Depok, 2021 <i>The Rivers Flowing of Depok Subsubdistrict, 2021</i>	7
1.4	Banyaknya Hari Hujan dan Curah Hujan per Bulan di Kecamatan Depok, 2021 <i>Rainydays and Rainfall per Month in Depok Subdistrict, 2021</i>	8
2.	PEMERINTAHAN/GOVERNMENT	
2.1	Banyaknya Padukuhan, RW, dan RT menurut Desa di Kecamatan Depok, 2021 <i>Number of Sub Villages, Citizens Association, and Neighborhood Association in Depok Subdistrict, 2021</i>	13
2.2	Banyaknya Hansip, Babinsa dan Polisi Pelayanan Masyarakat menurut Desa di Kecamatan Depok, 2021 <i>Number of Hansip, Babinsa and Police of Community Service per Village In Depok Subdistrict, 2021</i>	14
2.3	Banyaknya Aparat Pemerintah per Desa di Kecamatan Depok 2021 <i>Number of Government Employee by Villages in Depok Subdistrict, 2021</i>	15
2.4	Banyaknya Sarana Pemerintahan menurut Desa di Kecamatan Depok, 2021	16
	<i>Number of Government Facility by Villages in Depok Subdistrict, 2021</i>	
3.	PENDUDUK/POPULATION	
3.1	Banyaknya Penduduk menurut Jenis Kelamin menurut Desa di Kecamatan Depok, 2021 <i>Population by Sex by Villages in Depok Subdistrict, 2021</i>	21

3.2	Banyaknya KK, Penduduk, dan Rata-rata Jiwa per KK menurut Desa di Kecamatan Depok, 2021 <i>Number of Head of Family, Population, and Average per Capita of Head of Family by Villages in Depok Subdistrict, 2021</i>	22
3.3	Banyaknya Kelahiran dan Kematian menurut Desa di Kecamatan Depok, 2021 <i>Number of Fertility and Mortality by Villages in Depok Subdistrict, 2021</i>	23
3.4	Besarnya CBR dan CDR menurut Desa di Kecamatan Depok, 2021 <i>Number of CBR and CDR by Villages in Depok Subdistrict, 2021</i>	24
3.5	Banyaknya Penduduk yang Datang dan Pergi menurut Desa di Kecamatan Depok, 2021 <i>Number of Immigrant and Emmigrant by Villages in Depok Subdistrict, 2021</i>	25
3.6	Banyaknya Penduduk menurut Pemeluk Agama menurut Desa di Kecamatan Depok, 2021	26
3.7	Banyaknya Keluarga menurut Desa dan Jenis Pengguna Listrik di Kecamatan Depok, 2021 <i>Families by Village and Types of Electricity Users in Depok Subdistrict, 2021</i>	27
3.8	Banyaknya Desa menurut Keberadaan Penerangan Jalan Utama Desa di Kecamatan Depok, 2019, 2020 dan 2021 <i>Number of Villages According to Existence Lighting of Main Village Roads in in Depok Subdistrict, 2019, 2020 and 2021</i>	28
3.9	Banyaknya Desa Menurut Jenis Bahan Bakar untuk Memasak yang Digunakan oleh Sebagian Besar Keluarga di Kecamatan Depok, 2019, 2020, dan 2021 <i>Number of Villages by Type of Fuel for Cooking Used by Most Families in Depok Subdistrict, 2019, 2020 and 2021</i>	29
3.10	Banyaknya Desa Menurut Sumber Air Minum Sebagian Besar Keluarga di Kecamatan Depok, 2019, 2020, dan 2021 <i>Number of Villages by Source of Drinking Water Most of Families in Depok Subdistrict, 2019, 2020, and 2021</i>	30
3.11	Banyaknya Desa Menurut Penggunaan Fasilitas Tempat Buang Air Besar Sebagian Besar Keluarga di Kecamatan Depok, 2019, 2020, dan 2021	

Number of Villages According to the Use of Defecation Facilities for Most Families in Depok District, 2019, 2020 and 202131

4. SOSIAL/SOCIAL

4.1 Banyaknya Pasangan Usia Subur (PUS) dan Peserta KB menurut Desa di Kecamatan Depok, 2021
Number of Couple Reproductive and Active Family Planning Participants by Villages in Depok Subdistrict, 2021.....37

4.2 Banyaknya Peserta KB Aktif menurut Alat Kontrasepsi menurut Desa di Kecamatan Depok, 2021
Number of Family Planning Participants by Type of Contraception by Villages in Depok Subdistrict, 202138

4.3 Banyaknya Tempat Pelayanan KB menurut Desa di Kecamatan Depok, 2021
Number Facility of Family Planning Service by Villages in Depok Subdistrict, 202139

4.4 Banyaknya SLB, TK/RA, dan SD menurut Desa di Kecamatan Depok, 2021
Number of Special School, Kindergartens, and Primary School by Villages in Depok Subdistrict, 202140

4.5 Banyaknya Madrasah Ibtidaiyah (MI) menurut Desa di Kecamatan Depok, 2021
Number of Madrasah Ibtidaiyah (MI) by Villages in Depok Subdistrict, 202141

4.6 Banyaknya Sekolah Menengah Pertama (SMP) menurut Desa di Kecamatan Depok, 2021
Number of Ijunior High School by Villages in Depok Subdistrict, 2021 ..
.....42

4.7 Banyaknya Madrasah Tsanawiyah (MTs) menurut Desa di Kecamatan Depok, 2021
Number of Madrasah Tsanawiyah (MTs) by Villages in Depok Subdistrict, 202143

4.8 Banyaknya Sekolah Menengah Atas (SMA) menurut Desa di Kecamatan Depok, 2021
Number of Semior High School by Villages in Depok Subdistrict, 2021 .
.....44

4.9 Banyaknya Madrasah Aliyah (MA) menurut Desa di Kecamatan Depok, 2021

	<i>Number of Madrasah Aliyah (MA) by Villages in Depok Subdistrict, 2021</i>	45
4.10	Banyaknya Sekolah Menengah Kejuruan (SMK) menurut Desa di Kecamatan Depok, 2021 <i>Number of Vocational High School by Villages in Depok Subdistrict, 2021</i>	46
4.11	Banyaknya Akademi/Perguruan Tinggi menurut Desa di Kecamatan Depok, 2021 <i>Number of Academies/Colleges by Villages in Depok Subdistrict, 2021</i>	47
4.12	Kemudahan untuk Mencapai Sarana Pendidikan terdekat bagi Desa yang tidak ada Sarana Pendidikan menurut Desa dan Jenjang Pendidikan di Kecamatan Depok, 2021 <i>Ease to Achieve Nearby Educational Facilities for Villages without Education Facilities by Village and Education Level in Depok Subdistrict, 2021</i>	48
4.13	Banyaknya Sarana Kesehatan menurut Desa dan Jenis Sarana Kesehatan di Kecamatan Depok, 2021 <i>Number of Health Facilities by Village and Types of Health Facilities by Villages in Depok Subdistrict, 2021</i>	49
4.14	Kemudahan Mencapai Sarana Kesehatan Terdekat bagi Desa yang tidak ada Sarana Kesehatan menurut Desa dan Jenis Sarana Kesehatan di Kecamatan Depok, 2021 <i>Ease of Reaching the Closest Health Facilities for Villages without Health Facilities by Village and Types of Health Facilities by Villages in Depok Subdistrict, 2021</i>	50
4.15	Banyaknya Warga Penderita Gizi Buruk menurut Desa di Kecamatan Depok, 2019 dan 2020 <i>Number of People with Severe Malnutrition According to Villages in Depok Subdistrict, 2019 and 2020</i>	51
4.16	Banyaknya Kejadian Bencana Alam menurut Desa dan Jenis Bencana Alam di Kecamatan Depok, 2020 <i>Number of Natural Disasters by Village and Types of Natural Disasters in Depok Subdistrict, 2020</i>	52
4.17	Banyaknya Korban Jiwa Akibat Bencana Alam menurut Desa dan Jenis Bencana Alam di Kecamatan Depok, 2020	

	<i>Number of Victims Due to Natural Disasters by Village and Types of Natural Disasters in Depok Subdistrict, 2020</i>	54
4.18	Keberadaan Fasilitas/Upaya Antisipasi/Mitigasi Bencana Alam menurut Desa di Kecamatan Depok, 2021 <i>Availability of Facilities / Anticipation / Mitigation Measures for Natural Disasters by Village in Depok Subdistrict, 2021</i>	56
4.19	Banyaknya Embung Desa menurut Desa di Kecamatan Depok, 2020 dan 2021 <i>Number of Village Embungs by Village in Depok Subdistrict, 2020 and 2021</i>	57
4.20	Banyaknya Desa yang Memiliki Kelompok Kegiatan Olahraga Menurut Jenis Olahraga dan Ketersediaan Fasilitas/Lapangan Olahraga di Kecamatan Depok, 2021 <i>Number of Villages having Sports Activity Groups by Type of Sport and Availability of Sports Facilities / Fields in Depok Subdistrict, 2021 ..</i>	58
4.21	Banyaknya Tempat Ibadah menurut Desa di Kecamatan Depok, 2021 <i>Number of Religious Worship Facility by Villages in Depok Subdistrict, 2021</i>	59
5.	PERTANIAN/AGRICULTURE	
5.1	Luas Tanah menurut Jenis Penggunaan menurut Desa di Kecamatan Depok, 2021 <i>Land Area by Type of Use per Village in Depok Subdistrict, 2021</i>	65
5.2	Luas Panen dan Produksi Padi Sawah menurut Desa di Kecamatan Depok, 2021 <i>Harvested Area, and Production of Wetland Pady by Villages in Depok Subdistrict, 2021</i>	66
5.3	Luas Panen dan Produksi Jagung menurut Desa di Kecamatan Depok, 2021 <i>Harvested Area, and Production of Maize by Villages in Depok Subdistrict, 2021</i>	67
5.4	Luas Panen, dan Produksi Ubi Kayu menurut Desa di Kecamatan Depok, 2021 <i>Planted Area, Harvested Area, and Production of Cassava per Village In Depok Subdistrict, 2021</i>	68
5.5	Luas Panen dan Produksi Ubi Jalar menurut Desa di Kecamatan Depok, 2021	

	<i>Planted Area, Harvested Area, and Production of Sweet Potato per Village in Depok Subdistrict, 2021</i>	69
5.6	Luas Panen dan Produksi Kacang Tanah menurut Desa di Kecamatan Depok, 2021 <i>Harvested Area and Production of Peanuts per Village In Depok Subdistrict, 2021</i>	70
6.	KEUANGAN DAN PARIWISATA/FINANCE AND TOURISM	
6.1	Banyaknya Sarana dan Prasarana Ekonomi menurut Desa di Kecamatan Depok, 2021 <i>Number of Economic Facilities and Infrastructure According to Village and Types in Depok Subdistrict, 2021</i>	75
6.2	Banyaknya Sarana Lembaga Keuangan yang Beroperasi menurut Desa di Kecamatan Depok, 2021 <i>Number of Facilities of Financial Institutions Operating by Village and Types in Depok Subdistrict, 2021</i>	77
6.3	Banyaknya Koperasi yang Masih Aktif menurut Desa di Kecamatan Depok, 2021 <i>Numbers of Active Cooperatives by Villages in Depok Subdistrict, 2021</i>	78
6.4	Banyaknya Wajib Pajak, Pokok Pajak, dan Pemasukan PBB menurut Desa di Kecamatan Depok, 2021 <i>Number of Taxpayers, Principal Tax and Tax Income per village in the Subdistrict of Depok, 2021</i>	79
7.	TRANSPORTASI DAN KOMUNIKASI/ TRANSPORTATION AND COMMUNICATION	
7.1	Sarana Transportasi Antar Desa menurut Desa di Kecamatan Depok, 2021 <i>Inter-Village Transportation Facilities According to Villages in Depok Subdistrict, 2021</i>	85
7.2	Kondisi Jalan Darat Antar Desa menurut Desa di Kecamatan Depok, 2021 <i>Inter-Village Land Condition According to the Village in Depok Subdistrict, 2021</i>	86
7.3	Keberadaan Kantor Pos/Pos Pembantu/ Rumah Pos dan Perusahaan/Agen Jasa Ekspedisi Swasta menurut Desa di Kecamatan Depok, 2021 <i>Existence of Post Offices / Auxiliary Posts / Post Houses and Companies / Private Expedition Agencies by Village in Depok Subdistrict, 2021</i>	87

7.4 Jumlah Menara dan Operator Layanan Komunikasi Telepon Seluler serta Kondisi Sinyal Telepon menurut Desa di Kecamatan Depok, 2021
Number of Towers and Cellular Telephone Communication Service Operators and Cellular Signal Signal Conditions by Village in Depok Subdistrict, 202188

<https://slemankab.bps.go.id>

DAFTAR GAMBAR/LIST OF FIGURES

	Halaman Page
1.1	Percentase Luas Daerah menurut Desa (%), 2021 <i>Percentage of Area by Villages (%), 2021</i> 4
2.1	Persentase Padukuhan menurut Desa di Kecamatan Depok (%), 2021 <i>Percentage of Sub Villages in Depok Subdistrict (%), 2021</i> 12
3.1	Jumlah Penduduk menurut Jenis Kelamin menurut Desa di Kecamatan Depok, 2021 <i>Population by Sex by Villages in Depok Subdistrict, 2021</i> 20
4.1	Jumlah Peserta KB Aktif menurut Alat Kontrasepsi di Kecamatan Depok, 2021 <i>Number of Family Planning Participants by Type of Contraception in Depok Subdistrict, 2021</i> 36
5.1	Persentase Luas Lahan Sawah per Desa di Kecamatan Depok (%), 2021 <i>Percentage of Rice Fields Area by Villages in Depok Subdistrict (%), 2021</i> 64
6.1	Banyaknya Sarana dan Prasarana Ekonomi di Kecamatan Depok, 2021 <i>Number of Economic Facilities and Infrastructure in Depok Subdistrict, 2021</i> 74
7.1	Banyaknya Menara dan Operator Layanan Komunikasi Telepon Seluler menurut Desa di Kecamatan Depok, 2021 <i>Number of Towers and Cellular Telephone Communication Service Operators by Village in Depok Subdistrict, 2021</i> 84

PENJELASAN UMUM/EXPLANATORY NOTES

Tanda-tanda, satuan-satuan, dan lain-lainnya yang digunakan dalam publikasi ini adalah sebagai berikut:

Symbols, measurement units, and acronyms which are used in this publication, are as follows:

1. TANDA-TANDA/SYMBOLS

Data tidak tersedia/Data not available	: ...
Tidak ada atau nol /Null or zero	: -
Data dapat diabaikan/Data negligible	: 0
Tanda decimal/Decimal point	: ,
Data tidak dapat ditampilkan/Not applicable	: NA
Angka estimasi/Estimated figures	: e
Angka diperbaiki/Revised figures	: r
Angka sementara/Preliminary figures	: x
Angka sangat sementara/Very preliminary figures	: xx
Angka sangat sangat sementara/Very very preliminary figures	: xxx

2. SATUAN/UNITS

barel/barrel	: 158,99 liter/litres = 1/6,2898 m ³
hektar (ha)/hectare (ha)	: 10 000 m ²
kilometer (km)/kilometres (km)	: 1 000 meter/meters (m)
knot/knot	: 1,8523 km/jam (km/hour)
kuintal/quintal	: 100 kg
KWh	: 1 000 Watt hour
MWh	: 1 000 KWh
liter (untuk beras)/litre (for rice)	: 0,80 kg
MMSCF	: 1/35,3 m ³
metrik ton (m.ton)/metric ton (m. ton)	: 0,98421 long ton = 1 000 kg
ons/ounce	: 28,31 gram/grams
ton	: 1 000 kg

Satuan lain: buah, dus, butir, helai/lembar, kaleng, batang, pulsa, ton kilometer (ton-km), jam, menit, persen (%).

Other units: unit, pack, pieces, sheet, tin, pulse, ton-kilometres(ton-km), hour, minute, percent (%).

Perbedaan angka di belakang koma disebabkan oleh pembulatan angka.

The difference in decimal numbers is caused by rounding.

GEOGRAFI & IKLIM

Geography & Climate



★ Bab/Chapter ★

Curah Hujan Terbesar & Terkecil di Kecamatan Depok

Juni

220 MM

Agustus

3 MM

1 mm curah hujan = 1 liter air per meter persegi
1 mm rainfall = 1 liter of water per meter of land

Sumber: Stasiun Klimatologi Kelas IV Sleman/Climatology Station Office of Sleman

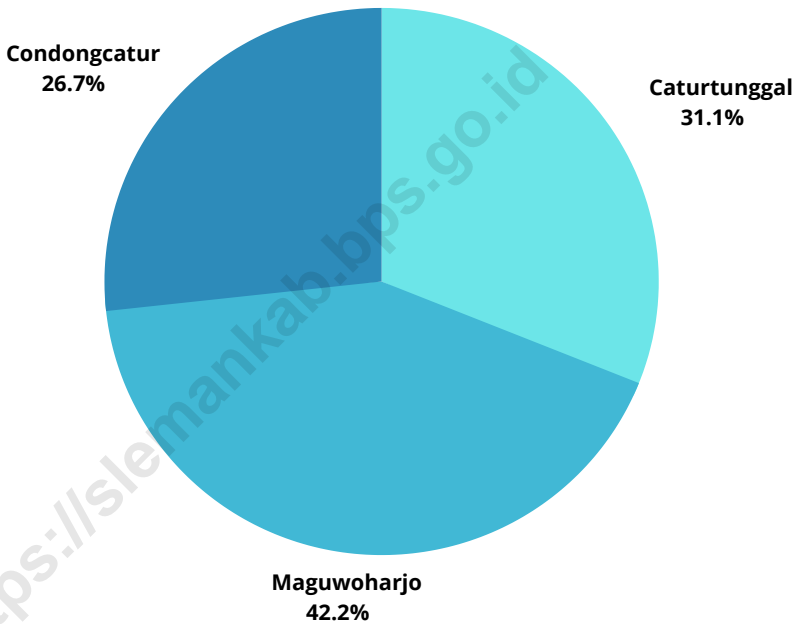
PENJELASAN TEKNIS

- Kecamatan Depok memiliki luas 35,55 km² dan terdiri dari 3 desa dan 58 dusun. Bagian utara berbatasan dengan Kecamatan Ngaglik dan Kecamatan Ngemplak, bagian timur dengan Kecamatan Kalasan, bagian selatan dengan Kecamatan Berbah dan Kotamadya Yogyakarta, dan bagian barat dengan Kecamatan Mlati dan Kecamatan Ngaglik.
- Ada beberapa sungai yang mengalir melalui Kecamatan Depok. Di Desa Caturtunggal dilalui Sungai Gajahwong, Tambakbayan, Pelang, dan Code. Di Desa Maguwoharjo dilalui Sungai Tambakbayan, Buntung, dan Pelang. Di Desa Condongcatur dilalui Sungai Pelang, Buntung, Gajahwong, dan Sungai Tambakbayan.

TECHNICAL NOTES

- *Subdistrict of Depok region with an area of 35,55 km² and consist of 3 villages and 58 subvillages. The northern part borders with Ngaglik and Ngemplak Subdistrict, the eastern part borders with Kalasan Subdistrict, the southern part borders with Berbah Subdistrict and Yogyakarta City, and the western part borders with Mlati and Ngaglik Subdistrict.*
- *There are several rivers flowing through the Depok Subdistrict. In the village of Caturtunggal traversed the Gajahwong River, Tambakbayan, Pelang, and Code River. In the village of Maguwoharjo passed Tambakbayan, Buntung, and Pelang River. In the village of Condongcatur passed Pelang River, Buntung, Gajahwong, and Tambakbayan River.*

Gambar 1.1 **Percentase Luas Daerah menurut Desa (%), 2021**
Figures **Percentage of Area by Villages (%), 2021**



Sumber/Source: Kantor Desa/ Villages Office

Tabel
Table 1.1

Batas Wilayah Kecamatan Depok, 2021
Boundaries of Depok Subdistrict, 2021

Arah Direction	Batas Wilayah Boundaries
(1)	(2)
Utara/ <i>North</i>	Kec. Ngaglik, Kec Ngemplak
Timur/ <i>East</i>	Kec Ngemplak, Kec Kalasan
Selatan/ <i>South</i>	Kec. Gondokusuman, Kec Berbah
Barat/ <i>West</i>	Kecamatan Mlati, Kec Ngaglik

Tabel
Table 1.2**Luas Wilayah Menurut Desa Di Kecamatan Depok, 2021**
Total Area by Villages in Depok Subdistrict, 2021

Desa Villages	Luas (Km2) Total Area (Km2)
(1)	(2)
1. Caturtunggal	11,04
2. Maguwoharjo	15,01
3. Condongcatur	9,50
Kecamatan/Subdistrict	35,55

Sumber/Source: Kantor Desa/ Villages Office

Tabel 1.3
Table

Nama Sungai yang Melintasi Kecamatan Depok, 2021
The Rivers Flowing of Depok Subsubdistrict, 2021

Desa Villages	Nama Sungai River Name
(1)	(2)
1. Caturtunggal	Gajahwong, Tambakbayan, Pelang, Code
2. Maguwoharjo	Tambakbayan, Buntung, Pelang
3. Condongcatur	Pelang, Buntung, Gajahwong, Tambakbayan

Sumber/Source: Kantor Desa/ Villages Office

Tabel
Table 1.4**Banyaknya Hari Hujan dan Curah Hujan per Bulan di
Kecamatan Depok, 2021**
*Rainydays and Rainfall per Month in Depok Subdistrict,
2021*

Bulan <i>Month</i>	Jumlah Hujan Sebulan <i>Number of Rain a Month</i>	Jumlah Hujan Sebulan <i>Rainy a month (hari)</i>	Hujan Maksimum <i>Max Rain (mm)</i>
(1)	(2)	(3)	(4)
1. Januari	220	20	42
2. Februari	194	21	53
3. Maret	176	19	101
4. April	115	11	45
5. Mei	54	10	24
6. Juni	290	15	220
7. Juli	191	5	132
8. Agustus	8	5	3
9. September	55	10	28
10. Oktober	116	10	77
11. November	175	24	29
12. Desember	162	23	30
Jumlah Total	1 756	173	

Sumber/Source: Stasiun Klimatologi Kelas IV Sleman/ *Climatology Station of Sleman*

PEMERINTAHAN

Government

2

★ Bab/Chapter ★

229
RW

Desa 3

709
RT

58

Padukuhan

**Jumlah Desa, Padukuhan, RW, dan RT
di Kecamatan Depok**

*Number of Villages, Sub Villages, Citizens Association, and
Neighborhood Association in Depok Subdistrict*

PENJELASAN TEKNIS

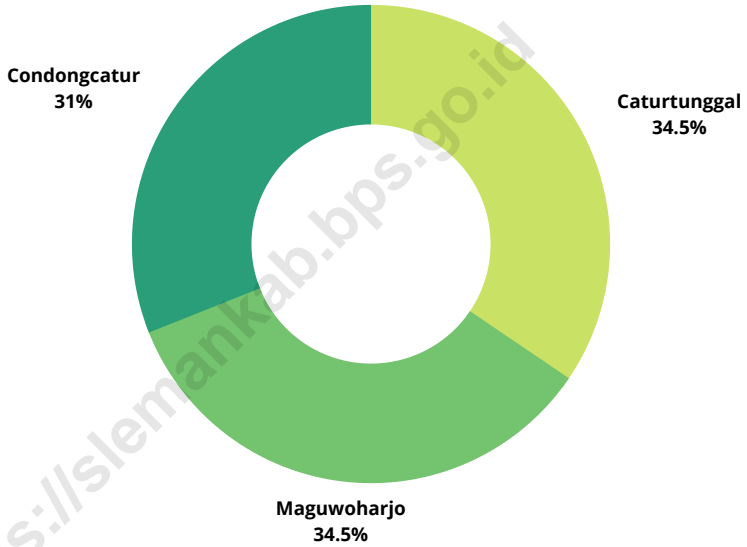
- Kecamatan Depok terdiri dari 3 desa yaitu Desa Caturtunggal, Maguwoharjo, dan Condongcatur, serta terdiri dari 58 padukuhan.
- Untuk mempermudah koordinasi, setiap dusun terbagi menjadi beberapa Rukun Warga (RW), dan setiap RW dibagi menjadi beberapa Rukun Tetangga (RT). Desa Caturtunggal terdiri dari 20 Dusun, 93 RW, dan 293 RT. Desa Maguwoharjo terdiri dari 20 Dusun, 72 RW, dan 205 RT. Desa Condongcatur terdiri dari 18 Dusun, 64 RW, dan 211 RT.
- Kecamatan Depok memiliki sarana pemerintahan antara lain satu kantor Kecamatan, 3 kantor desa di setiap desa, dan 3 polsek dan 9 pos polisi.

TECHNICAL NOTES

- Depok Subdistrict consist of 3 villages, Caturtunggal, Maguwoharjo, Condongcatur and 58 subvillages.
- To facilitate coordination, each subvillage is divided into citizen association (RW), and each citizen association is divided into several neighborhood association (RT). Desa Caturtunggal consists of 20 subvillage, 93 RW, and 293 RT. Maguwoharjo Village consists of 20 subvillage, 72 RW, and 205 RT. Condongcatur village consists of 18 subvillage, 64 RW, and 211 RT.
- Depok Subdistrict has government facilities such as one Subdistrict office, 3 village offices in each village, and 3 office police sector and 5 police stations.

Gambar 2.1
Figures

Persentase Padukuhan menurut Desa di Kecamatan Depok (%), 2021
Percentage of Sub Villages in Depok Subdistrict (%), 2021



Sumber/Source : Kantor Desa/Villages Office

Tabel
Table 2.1

Banyaknya Padukuhan, RW, dan RT menurut Desa di Kecamatan Depok, 2021
Number of Sub Villages, Citizens Association, and Neighborhood Association in Depok Subdistrict, 2021

Desa Villages	Padukuhan Sub Villages	RW	RT
(1)	(2)	(3)	(4)
1. Caturtunggal	20	93	293
2. Maguwoharjo	20	72	205
3. Condongcatur	18	64	211
Kecamatan/Subdistrict	58	229	709

Sumber/Source : Kantor Desa/Villages Office

Tabel
Table 2.2

Banyaknya Hansip, Babinsa dan Polisi Pelayanan Masyarakat menurut Desa di Kecamatan Depok, 2021
Number of Hansip, Babinsa and Police of Community Service per Village In Depok Subdistrict, 2021

Desa Villages	Linmas	Babinsa	Babinkamtibmas
(1)	(2)	(3)	(4)
1. Caturtunggal	292	2	2
2. Maguwoharjo	171	2	2
3. Condongcatur	287	2	2
Kecamatan/Subdistrict	750	6	6

Sumber/Source : Kantor Desa/Villages Office

Tabel
Table 2.3

Banyaknya Aparat Pemerintah per Desa di Kecamatan Depok 2021
Number of Government Employee by Villages in Depok Subdistrict, 2021

Desa Villages	Administrasi Pemerintahan/Public Administration				
	Padukuhan Sub Villages	RW	RT	Pamong	Pembantu Pamong
(1)	(2)	(3)	(4)	(5)	(6)
1. Caturtunggal	20	93	293	7	40
2. Maguwoharjo	20	72	205	7	33
3. Condongcatur	18	64	211	7	36
Kecamatan/Subdistrict	58	229	709	21	109

Sumber/Source : Kantor Desa/Villages Office

Tabel
Table 2.4

Banyaknya Sarana Pemerintahan menurut Desa di Kecamatan Depok, 2021
Number of Government Facility by Villages in Depok Subdistrict, 2021

Desa Villages	Kantor Panewu	Kantor Desa	BalaiDesa	Polsek/Pos Polisi	Koramil	KUA
(1)	(2)	(3)	(4)	(5)	(6)	(7)
1. Caturtunggal	-	1	1	7	1	-
2. Maguwoharjo	-	1	1	2	-	1
3. Condongcatur	1	1	1	3	-	-
Kecamatan/Subdistrict	1	3	3	12	1	1

Sumber/Source : Kantor Desa/Villages Office

PENDUDUK

Population



★ Bab/Chapter ★



35,98% penduduk Kecamatan Depok merupakan penduduk Desa Caturtunggal (44.568 jiwa)

In 2021, there were 44,568 inhabitants in Caturtunggal Village which were the most population in Depok Subdistrict.

PENJELASAN TEKNIS

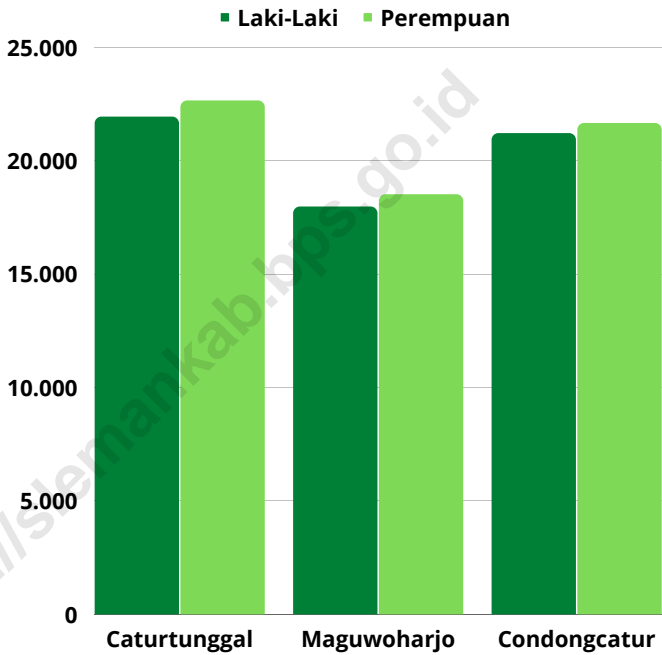
1. Berdasarkan Data dari Dinas Kependudukan dan Catatan Sipil Kabupaten Sleman, jumlah penduduk Kecamatan Depok tahun 2021 sebanyak 123.886 jiwa, terdiri dari 61.094 laki-laki dan 62.792 perempuan. Perbandingan jenis kelamin di Kecamatan Depok adalah 97. Dengan luas wilayah 35,55 km², maka kepadatan penduduk Kecamatan Depok adalah 3.485 jiwa per km². Desa yang paling padat penduduknya adalah Desa Caturtunggal dengan 4.037 jiwa per km².
2. Menurut data registrasi penduduk, jumlah Kepala Keluarga di Kecamatan Depok adalah 42.138 KK, dengan rata-rata jiwa per Kepala Keluarga adalah 3 jiwa.

TECHNICAL NOTES

1. *Based on data from The Population and Civil Registry of Sleman, number of Depok Subdistrict people in 2021 is 123.886 consisting of 61.094 male and 62.792 female. Sex ratio in Depok Subdistrict is 97. With area of 35.55 km², the density of population of Depok Subdistrict is 3.485 people per km². Village with the most dense population is Caturtunggal village of 4.037 people per km².*
2. *According to data from the population registration, the number of head of family in the Sleman Subdistrict is 42.138, with an average per head of family is 3.*

Gambar 3.1
Figures

Jumlah Penduduk menurut Jenis Kelamin menurut Desa di Kecamatan Depok, 2021
Population by Sex by Villages in Depok Subdistrict, 2021



Sumber/Source: Dinas Kependudukan dan Catatan Sipil Kabupaten Sleman / The Population and Civil Registration Agency of Sleman Regency

Tabel
Table 3.1

**Banyaknya Penduduk menurut Jenis Kelamin menurut
Desa di Kecamatan Depok, 2021**
Population by Sex by Villages in Depok Subdistrict, 2021

Desa Villages	Laki-laki Male	Perempuan Female	Jumlah Total
(1)	(2)	(3)	(4)
1. Caturtunggal	21 928	22 640	44 568
2. Maguwoharjo	17 965	18 505	36 470
3. Condongcatur	21 201	21 647	42 848
Kecamatan/Subdistrict	61 094	62 792	123 886

Sumber/Source: Dinas Kependudukan dan Catatan Sipil Kabupaten Sleman/The Population and Civil Registration Agency of Sleman Regency

Tabel
Table 3.2

Banyaknya KK, Penduduk, dan Rata-rata Jiwa per KK menurut Desa di Kecamatan Depok, 2021
Number of Head of Family, Population, and Average per Capita of Head of Family by Villages in Depok Subdistrict, 2021

Desa Villages	KK Head of Family	Penduduk Population	Rata-rata Jiwa per Keluarga
(1)	(2)	(3)	(4)
1. Caturtunggal	15 630	44 568	3
2. Maguwoharjo	12 035	36 470	3
3. Condongcatur	14 473	42 848	3
Kecamatan/Subdistrict	42 138	123 886	3

Sumber/Source:

Dinas Kependudukan dan Pencatatan Sipil Kabupaten Sleman/*The Population and Civil Registration Agency of Sleman Regency*

Tabel
Table 3.3**Banyaknya Kelahiran dan Kematian menurut Desa
di Kecamatan Depok, 2021**
**Number of Fertility and Mortality by Villages in Depok
Subdistrict, 2021**

Desa Villages	Kelahiran/Fertility			Kematian/Mortality		
	Laki-laki Male	Perempuan Female	Jumlah Total	Laki-laki Male	Perempuan Female	Jumlah Total
(1)	(2)	(3)	(4)	(5)	(6)	(7)
1. Caturtunggal	113	101	214	315	256	571
2. Maguwoharjo	107	102	209	198	159	357
3. Condongcatur	124	113	237	224	179	403
Kecamatan/Subdistrict	344	316	660	737	594	1 331

Sumber/Source: Dinas Kependudukan dan Catatan Sipil Kabupaten Sleman/The Population and Civil Registration Agency of Sleman Regency

Tabel
Table 3.4**Besarnya CBR dan CDR menurut Desa di Kecamatan Depok, 2021**
Number of CBR and CDR by Villages in Depok Subdistrict, 2021

Desa Villages	CBR	CDR
(1)	(2)	(3)
1. Caturtunggal	5	13
2. Maguwoharjo	6	10
3. Condongcatur	6	9
Kecamatan/Subdistrict	5	11

Sumber/Source: Dinas Kependudukan dan Pencatatan Sipil Kabupaten Sleman/The Population and Civil Registration Agency of Sleman Regency

Tabel
Table 3.5

**Banyaknya Penduduk yang Datang dan Pergi menurut
Desa di Kecamatan Depok, 2021**
*Number of Immigrant and Emmigrant by Villages in Depok
Subdistrict, 2021*

Desa <i>Villages</i>	Datang/ <i>In Migration</i>			Pergi/ <i>Out Migration</i>		
	Laki-laki <i>Male</i>	Perempuan <i>Female</i>	Jumlah <i>Total</i>	Laki-laki <i>Male</i>	Perempuan <i>Female</i>	Jumlah <i>Total</i>
(1)	(2)	(3)	(4)	(5)	(6)	(7)
1. Caturtunggal	491	573	1 064	635	706	1 341
2. Maguwoharjo	477	592	1 069	334	398	732
3. Condongcatur	589	658	1 247	526	551	1 077
Kecamatan/<i>Subdistrict</i>	1 557	1 823	3 380	1 495	1 655	3 150

Sumber/*Source*: Dinas Kependudukan dan Catatan Sipil Kabupaten Sleman/*The Population and Civil Registration Agency of Sleman Regency*

Tabel
Table 3.6**Banyaknya Penduduk menurut Pemeluk Agama menurut
Desa di Kecamatan Depok, 2021**
*Population by Religion per Villages in Depok Subdistrict,
2021*

Desa Villages	Islam Moslem	Kristen Christian	Katolik Catholic	Hindu Hindu	Budha Buddha	Konghuchu	Aliran Keper- cayaan
(1)	(2)	(3)	(4)	(5)	(6)	(7)	(8)
1.Caturtunggal	36 661	3 586	4 110	90	112	3	6
2.Maguwoharjo	32 542	1 692	2 087	110	38	1	-
3.Candongcatjur	35 649	2 391	4 635	108	61	3	1
Kecamatan/ Subdistrict	104 852	7 669	10 832	308	211	7	7

Sumber/Source: Dinas Kependudukan dan Catatan Sipil Kabupaten Sleman/The Population and Civil Registration Agency of Sleman Regency

Tabel
Table 3.7**Banyaknya Keluarga menurut Desa dan Jenis Pengguna Listrik di Kecamatan Depok, 2021**
Families by Village and Types of Electricity Users in Depok Subdistrict, 2021

Desa Villages	Pengguna Listrik /Electricity Users			Bukan Pengguna Listrik Not an Electric User
	PLN	Non PLN	Jumlah/Total	
(1)	(2)	(3)	(4)	(5)
1. Caturtunggal	15 980	-	15 980	-
2. Maguwoharjo	12 160	-	12 160	-
3. Condongcatur	14 778	-	14 778	-
Kecamatan/Subdistrict	42 918	-	42 918	-

Sumber/Source: BPS, Pendataan Potensi Desa (Podes) 2021/BPS, Village Potential Data Collection 2021

Tabel
Table 3.8**Banyaknya Desa menurut Keberadaan Penerangan Jalan
Utama Desa di Kecamatan Depok, 2019, 2020 dan 2021**
**Number of Villages According to Existence Lighting of Main
Village Roads in in Depok Subdistrict, 2019, 2020 and 2021**

Desa Villages	PLN	Non PLN	Jumlah/Total
(1)	(2)	(3)	(4)
Sumber Penerangan Jalan Utama			
Listrik Pemerintah	3	3	3
Listrik Non Pemerintah	-	-	-
Non Listrik	-	-	-
Kecamatan/Subdistrict	3	3	3

Sumber/Source: BPS, Pendataan Potensi Desa (Podes) 2019, 2020, 2021/BPS, Village Potential Data Collection 2019, 2020, 2021

Tabel
Table 3.9

Banyaknya Desa Menurut Jenis Bahan Bakar untuk Memasak yang Digunakan oleh Sebagian Besar Keluarga di Kecamatan Depok, 2019, 2020, dan 2021
Number of Villages by Type of Fuel for Cooking Used by Most Families in Depok Subdistrict, 2019, 2020 and 2021

Jenis Bahan Bakar Type of Fuel	2019	2020	2021
(1)	(2)	(3)	(4)
Gas Kota	-	-	-
LPG 3 Kg ¹⁾	3	3	3
Minyak Tanah	-	-	2
Kayu Bakar	-	-	3
Lainnya	-	-	-
Kecamatan/Subdistrict	3	3	8

Catatan:

¹⁾ Termasuk LPG lebih dari 3 Kg

Sumber/Source:

BPS, Pendataan Potensi Desa (Podes) 2019, 2020 & 2021/BPS, Village Potential Data Collection 2019, 2020 & 2021

Tabel
Table 3.10**Banyaknya Desa Menurut Sumber Air Minum Sebagian Besar Keluarga di Kecamatan Depok, 2019, 2020, dan 2021**
Number of Villages by Source of Drinking Water Most of Families in Depok Subdistrict, 2019, 2020, and 2021

Sumber Air Minum Source of Drinking Water	2019	2020	2021
(1)	(2)	(3)	(4)
Air KemasanBermerk	-	-	-
Air Isi Ulang	-	-	-
LedengDenganMeteran	-	-	-
LedengTanpaMeteran	-	-	-
SumurBoratauPompa	-	-	-
Sumur	3	3	3
Mata Air	-	-	-
Sungai/Danau/Kolam/ Waduk/Situ/ Embung/Bendungan	-	-	-
Air Hujan	-	-	-
Lainnya	-	-	-

Sumber/Source: BPS, Pendataan Potensi Desa (Podes) 2019, 2020 & 2021/BPS, Village Potential Data Collection 2019, 2020 & 2021

Tabel
Table 3.11

Banyaknya Desa Menurut Penggunaan Fasilitas Tempat Buang Air Besar Sebagian Besar Keluarga di Kecamatan Depok, 2019, 2020, dan 2021
Number of Villages According to the Use of Defecation Facilities for Most Families in Depok District, 2019, 2020 and 2021

Fasilitas Tempat Buang Air Besar <i>Defecation Facilities</i>	2019	2020	2021
(1)	(2)	(3)	(4)
Jamban	3	3	3
Sendiri	3	3	3
Bersama	-	-	-
Umum	-	-	-
Bukan Jamban	-	-	-
Kecamatan/Subdistrict	3	3	3

Sumber/Source: BPS, Pendataan Potensi Desa (Podes) 2019, 2020 & 2021/BPS, Village Potential Data Collection 2019, 2020 & 2021

SOSIAL

Social



Bab/Chapter

BANYAKNYA SEKOLAH DASAR (SD) DI KECAMATAN DEPOK, 2021

Number of Elementary Schools in Depok Subdistrict, 2021

~ SD NEGERI = 37 SEKOLAH
~ SD SWASTA = 22 SEKOLAH

PENJELASAN TEKNIS

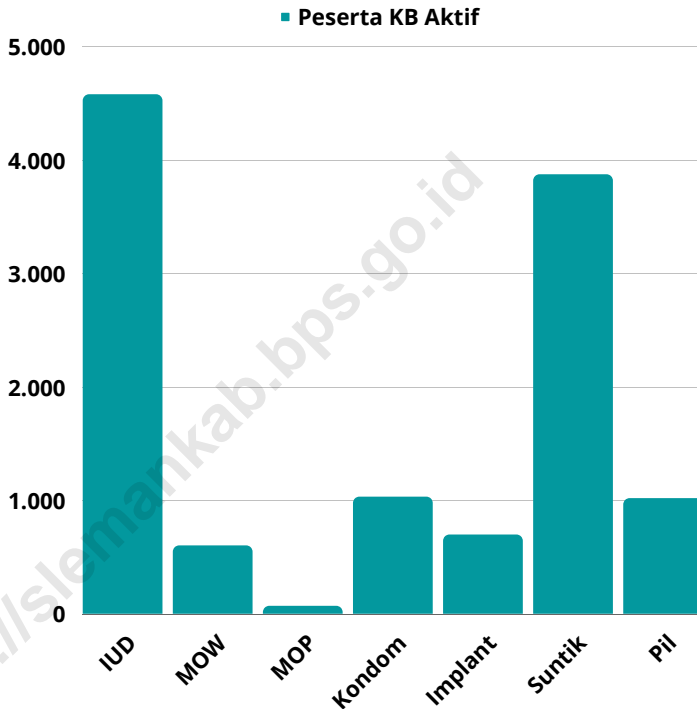
- Untuk menekan pertumbuhan penduduk pemerintah mencanangkan program Keluarga Berencana (KB). Respon masyarakat terhadap program tersebut cukup cukup positif. Hal ini terlihat dari tingginya jumlah penduduk yang aktif menjadi akseptor
- Pada tahun 2021 jumlah akseptor tercatat 11.864 orang dari 15.508 pasangan usia subur (PUS) atau sekitar 76,50 persen pengguna KB yang terdapat di Kecamatan Depok. Alat kontrasepsi yang banyak digunakan adalah IUD (38,97 persen) dan suntik (33,09 persen).
- Peningkatan kualitas Sumber Daya Manusia juga dipengaruhi oleh ketersediaan sarana dan prasana pendidikan yang berupa sumber daya manusia dan sarana fisik. Kecamatan Depok memiliki 84 sekolah Taman Kanak-kanak, sekolah dasar sebanyak 49 terdiri dari 35 sekolah negeri dan 14 swasta, SMP sebanyak 13 terdiri dari 5 sekolah negeri dan 8 swasta, SMA/SMK sebanyak 9, terdiri dari 2 sekolah negeri dan 7 sekolah swasta.

TECHNICAL NOTES

- *To suppress the growth of the population the government launched the Family Planning Program (KB). The community's response to the program is quite positive. This can be seen from the high number of active population to become acceptors. By 2021 the number of acceptors is 11.864 from 15.508 fertile couples (PUS) or about 76,50 percent of family planning users in Depok sub-Subdistrict. The most widely used contraceptives are IUD (38,97 percent) and injection (33,09 percent).*
- *Improving the quality of Human Resources is also influenced by the availability of educational facilities and infrastructure in the form of human resources and physical facilities. Depok Subdistrict has 84 kindergartens, 49 elementary schools consisting of 35 government schools and 14 private schools, 13 junior high schools consisting of 5 government schools and 8 private high schools, 9 high schools / vocational schools, consisting of 2 government schools and 7 private schools.*

**Gambar
Figures** 4.1

**Jumlah Peserta KB Aktif menurut Alat Kontrasepsi di
Kecamatan Depok, 2021**
*Number of Family Planning Participants by Type of
Contraception in Depok Subdistrict, 2021*



Sumber/Source: Dinas Pemberdayaan Perempuan dan Perlindungan Anak Pengendalian Penduduk & KB/ The Board of Family Planning, Community and Women Empowerment

Tabel
Table 4.1

Banyaknya Pasangan Usia Subur (PUS) dan Peserta KB menurut Desa di Kecamatan Depok, 2021
Number of Couple Reproductive and Active Family Planning Participants by Villages in Depok Subdistrict, 2021

Desa Villages	Pasangan Usia Subur Number of Couple Reproductive	Peserta KB Active Family Planning Participants	Persentase (%)
(1)	(2)	(3)	(4)
1. Caturtunggal	5 513	4 239	76.89
2. Maguwoharjo	4 963	3 809	76.75
3. Condongcatur	5 027	3 816	75.91
Kecamatan/Subdistrict	15 503	11 864	76.53

Sumber/Source:

Dinas Pemberdayaan Perempuan dan Perlindungan Anak Pengendalian Penduduk & KB/ *The Board of Family Planning, Community and Women Empowerment*

Tabel
Table 4.2**Banyaknya Peserta KB Aktif menurut Alat Kontrasepsi menurut Desa di Kecamatan Depok, 2021**
Number of Family Planning Participants by Type of Contraception by Villages in Depok Subdistrict, 2021

Desa Villages	IUD	MOW	MOP	Condom	Implant	Suntik	Pil
(1)	(2)	(3)	(4)	(5)	(6)	(7)	(8)
1. Caturtunggal	1 479	207	35	473	450	1 121	474
2. Maguwoharjo	1 485	186	11	222	134	1 492	279
3. Condongcatur	1 616	207	21	335	112	1 261	264
Kecamatan/ Subdistrict	4 580	600	67	1 030	696	3 874	1 017

Sumber/Source:

Dinas Pemberdayaan Perempuan dan Perlindungan Anak Pengendalian Penduduk & KB/ The Board of Family Planning, Community and Women Empowerment

Tabel
Table 4.3

**Banyaknya Tempat Pelayanan KB menurut Desa di
Kecamatan Depok, 2021**
*Number Facility of Family Planning Service by Villages in
Depok Subdistrict, 2021*

Desa Villages	Posyandu	PPKBD	Sub PPKBD
(1)	(2)	(3)	(4)
1. Caturtunggal	36	1	41
2. Maguwoharjo	34	1	41
3. Condongcatur	40	1	40
Kecamatan/Subdistrict	110	3	122

Sumber/Source:

Dinas Pemberdayaan Perempuan dan Perlindungan Anak Pengendalian Penduduk & KB/ *The Board of Family Planning, Community and Women Empowerment*

Tabel
Table 4.4**Banyaknya SLB, TK/RA, dan SD menurut Desa di Kecamatan Depok, 2021**
Number of Special School, Kindergartens, and Primary School by Villages in Depok Subdistrict, 2021

Desa Villages	SLB Special School	TK Kindergartens	SD Primay School	
			Negeri Government	Swasta Private
(1)	(2)	(3)	(4)	(5)
1. Caturtunggal	1	33	16	15
2. Maguwoharjo	-	20	10	2
3. Condongcatur	4	31	11	5
Kecamatan/Subdistrict	5	84	37	22

Sumber/Source: BPS, Pendataan Potensi Desa (Podes) 2021/ BPS, Village Potential Data Collection 2021

Tabel
Table 4.5

Banyaknya Madrasah Ibtidaiyah (MI) menurut Desa di Kecamatan Depok, 2021
Number of Madrasah Ibtidaiyah (MI) by Villages in Depok Subdistrict, 2021

Desa Villages	Negeri Government	Swasta Private	Jumlah Total
(1)	(2)	(3)	(4)
1. Caturtunggal	-	-	-
2. Maguwoharjo	-	2	2
3. Condongcatur	-	2	2
Kecamatan/Subdistrict	-	4	4

Sumber/Source: BPS, Pendataan Potensi Desa (Podes) 2021/ BPS, Village Potential Data Collection 2021

Tabel
Table 4.6**Banyaknya Sekolah Menengah Pertama (SMP) menurut
Desa di Kecamatan Depok, 2021**
**Number of Ijunior High School by Villages in Depok
Subdistrict, 2021**

Desa Villages	Negeri Government	Swasta Private	Jumlah Total
(1)	(2)	(3)	(4)
1. Caturtunggal	2	2	4
2. Maguwoharjo	1	3	4
3. Condongcatur	2	4	6
Kecamatan/Subdistrict	5	9	14

Sumber/Source: BPS, Pendataan Potensi Desa (Podes) 2021 / BPS, Village Potential Data Collection 2021

Tabel
Table 4.7**Banyaknya Madrasah Tsanawiyah (MTs) menurut Desa di Kecamatan Depok, 2021**
Number of Madrasah Tsanawiyah (MTs) by Villages in Depok Subdistrict, 2021

Desa Villages	Negeri Government	Swasta Private	Jumlah Total
(1)	(2)	(3)	(4)
1. Caturtunggal	-	1	1
2. Maguwoharjo	1	1	2
3. Condongcatur	-	1	1
Kecamatan/Subdistrict	1	3	4

Sumber/Source: BPS, Pendataan Potensi Desa (Podes) 2021/ BPS, Village Potential Data Collection 2021

Tabel
Table 4.8**Banyaknya Sekolah Menengah Atas (SMA) menurut Desa di Kecamatan Depok, 2021**
Number of Senior High School by Villages in Depok Subdistrict, 2021

Desa Villages	Negeri Government	Swasta Private	Jumlah Total
(1)	(2)	(3)	(4)
1. Caturtunggal	1	3	4
2. Maguwoharjo	-	-	-
3. Condongcatur	-	-	-
Kecamatan/Subdistrict	1	3	4

Sumber/Source: BPS, Pendataan Potensi Desa (Podes) 2021 / BPS, Village Potential Data Collection 2021

Tabel
Table 4.9**Banyaknya Madrasah Aliyah (MA) menurut Desa di Kecamatan Depok, 2021**
Number of Madrasah Aliyah (MA) by Villages in Depok Subdistrict, 2021

Desa Villages	Negeri Government	Swasta Private	Jumlah Total
(1)	(2)	(3)	(4)
1. Caturtunggal	-	-	-
2. Maguwoharjo	1	1	2
3. Condongcatur	-	1	1
Kecamatan/Subdistrict	1	2	3

Sumber/Source: BPS, Pendataan Potensi Desa (Podes) 2021/ BPS, Village Potential Data Collection 2021

Tabel
Table 4.10**Banyaknya Sekolah Menengah Kejuruan (SMK) menurut
Desa di Kecamatan Depok, 2021**
**Number of Vocational High School by Villages in Depok
Subdistrict, 2021**

Desa Villages	Negeri Government	Swasta Private	Jumlah Total
(1)	(2)	(3)	(4)
1. Caturtunggal	1	3	4
2. Maguwoharjo	1	2	3
3. Condongcatur	-	1	1
Kecamatan/Subdistrict	2	6	8

Sumber/Source: BPS, Pendataan Potensi Desa (Podes) 2021 / BPS, Village Potential Data Collection 2021

Tabel
Table 4.11

**Banyaknya Akademi/Perguruan Tinggi menurut Desa di
Kecamatan Depok, 2021**
*Number of Academies/Colleges by Villages in Depok
Subdistrict, 2021*

Desa Villages	Negeri Government	Swasta Private	Jumlah Total
(1)	(2)	(3)	(4)
1. Caturtunggal	4	9	13
2. Maguwoharjo		2	2
3. Condongcatur	1	8	9
Kecamatan/Subdistrict	5	19	24

Sumber/Source:

BPS, Pendataan Potensi Desa (Podes) 2021/ BPS, Village Potential Data Collection 2021

Tabel
Table 4.12

Kemudahan untuk Mencapai Sarana Pendidikan terdekat bagi Desa yang tidak ada Sarana Pendidikan menurut Desa dan Jenjang Pendidikan di Kecamatan Depok, 2021
Ease to Achieve Nearby Educational Facilities for Villages without Education Facilities by Village and Education Level in Depok Subdistrict, 2021

Desa Villages	SD Primary School	MI	SMP Junior High School	MTs	SMA Senior High School	MA	SMK Vacational High School	Akademi/ Perguruan Tinggi
(1)	(2)	(3)	(4)	(5)	(6)	(7)	(8)	(9)
1.Caturtunggal	-	Mudah	-	-	-	Mudah	-	-
2.Maguwoharjo	-	-	-	-	Mudah	-	-	-
3.Candongcatur	-	-	-	-	Mudah	-	-	-

Catatan/Note :
Sumber/Source:

diisi (-) jika desa tersebut ada fasilitas jenjang pendidikan yang dimaksud
BPS, Pendataan Potensi Desa (Podes) 2021/ BPS, Village Potential Data Collection 2021

Tabel
Table 4.13**Banyaknya Sarana Kesehatan menurut Desa dan Jenis Sarana Kesehatan di Kecamatan Depok, 2021**
Number of Health Facilities by Village and Types of Health Facilities by Villages in Depok Subdistrict, 2021

Desa Villages	Rumah Sakit Hospital	Rumah Sakit Bersalin Maternity Hospital	Poliklinik/ Polyclinic	Puskesmas Public health center		Apotek Pharmacy
				Rawat Inap Hospitali- zation	Tanpa Rawat Inap Without Hospitali- zation	
(1)	(2)	(3)	(4)	(5)	(6)	(7)
1. Caturtunggal	4	-	3	-	1	23
2. Maguwoharjo	3	-	3	-	1	12
3. Condongcatur	2	-	3	-	1	10
Kecamatan/ Subdistrict	9	-	9	-	3	45

Sumber/Source:

BPS, Pendataan Potensi Desa (Podes) 2021/ BPS, Village Potential Data Collection 2021

Tabel
Table 4.14

Kemudahan Mencapai Sarana Kesehatan Terdekat bagi Desa yang tidak ada Sarana Kesehatan menurut Desa dan Jenis Sarana Kesehatan di Kecamatan Depok, 2021
Ease of Reaching the Closest Health Facilities for Villages without Health Facilities by Village and Types of Health Facilities by Villages in Depok Subdistrict, 2021

Desa Villages	Rumah Sakit Hospital	Rumah Sakit Bersalin Maternity Hospital	Poliklinik/ Polyclinic	Puskesmas Public health center		Apotek Pharmacy
				Rawat Inap Hospitali- zation	Tanpa Rawat Inap Without Hospitali- zation	
(1)	(2)	(3)	(4)			
1. Caturtunggal	-	Mudah	-	Mudah	-	-
2. Maguwoharjo	-	Mudah	-	Mudah	-	-
3. Condongcatur	-	Mudah	-	Mudah	-	-

Sumber/Source:

BPS, Pendataan Potensi Desa (Podes) 2021/ BPS, Village Potential Data Collection 2021

Tabel
Table 4.15**Banyaknya Warga Penderita Gizi Buruk menurut Desa di
Kecamatan Depok, 2019 dan 2020**
*Number of People with Severe Malnutrition According to
Villages in Depok Subdistrict, 2019 and 2020*

Desa Villages	2019	2020
(1)	(2)	(3)
Caturtunggal	-	16
Maguwoharjo	-	-
Condongcatur	-	-
Kecamatan/Subdistrict	-	16

Sumber/Source:

BPS, Pendataan Potensi Desa (Podes) 2020 & 2021/ BPS, Village Potential Data Collection 2020 & 2021

Tabel
Table 4.16**Banyaknya Kejadian Bencana Alam menurut Desa dan Jenis Bencana Alam di Kecamatan Depok, 2020**
Number of Natural Disasters by Village and Types of Natural Disasters in Depok Subdistrict, 2020

Desa Villages	Gempa Bumi Earthquake	Tsunami Tsunami	Gunung Meletus Mountain Erupted	Tanah Longsor Landslide	Banjir Flood
(1)	(2)	(3)	(4)	(5)	(6)
1.Caturtunggal	-	-	-	-	1
2.Maguwoharjo	-	-	-	-	-
3.Condongcatur	-	-	-	-	-
Kecamatan/ Subdistrict	-	-	-	-	1

Lanjutan Tabel/*Continued Table 4.16*

Desa Villages	Banjir Bandang Flash floods	Kekeringan Drought	Kebakaran Hutan dan Lahan Forest fires and land	Angin Puyuh/ Puting Beliung/ Topan Whirlwind/ Tornado/ Typhoon	Gelombang Pasang Laut Tidal Waves The sea
(1)	(7)	(8)	(9)	(10)	(11)
1.Caturtunggal	-	-	-	-	-
2.Maguwoharjo	-	-	-	1	-
3.Candongcatur	-	-	-	1	-
Kecamatan/ Subdistrict	-	-	-	2	-

Sumber/*Source:*BPS, Pendataan Potensi Desa (Podes) 2021/ *BPS, Village Potential Data Collection 2021*

Tabel
Table 4.17**Banyaknya Korban Jiwa Akibat Bencana Alam menurut Desa dan Jenis Bencana Alam di Kecamatan Depok, 2020**
Number of Victims Due to Natural Disasters by Village and Types of Natural Disasters in Depok Subdistrict, 2020

Desa Villages	Gempa Bumi Earthquake	Tsunami Tsunami	Gunung Meletus Mountain Erupted	Tanah Longsor Landslide	Banjir Flood
(1)	(2)	(3)	(4)	(5)	(6)
1.Caturtunggal	-	-	-	-	-
2.Maguwoharjo	-	-	-	-	-
3.Candongcatur	-	-	-	-	-
Kecamatan/ Subdistrict	-	-	-	-	-

Lanjutan Tabel/*Continued Table 4.17*

Desa Villages	Banjir Bandang Flash floods	Kekeringan Drought	Kebakaran Hutan dan Lahan Forest fires and land	Angin Puyuh/ Puting Beliung/ Topan Whirlwind/ Tornado/ Typhoon	Gelombang Pasang Laut Tidal Waves The sea
(1)	(7)	(8)	(9)	(10)	(11)
1.Caturtunggal	-	-	-	-	-
2.Maguwoharjo	-	-	-	-	-
3.Candongcatur	-	-	-	-	-
Kecamatan/ Subdistrict	-	-	-	-	-

Sumber/*Source:*BPS, Pendataan Potensi Desa (Podes) 2021/ *BPS, Village Potential Data Collection 2021*

Tabel
Table 4.18**Keberadaan Fasilitas/Upaya Antisipasi/Mitigasi Bencana Alam menurut Desa di Kecamatan Depok, 2021**
Availability of Facilities / Anticipation / Mitigation Measures for Natural Disasters by Village in Depok Subdistrict, 2021

Desa Villages	Sistem Peringatan Dini Bencana Alam Warning System Early Natural Disasters	Sistem Peringatan Dini Khusus Tsunami Warning System Early Special Tsunami	Perlengkapan Keselamatan Equipment Safety	Rambu-rambu dan Jalur Evakuasi Bencana Signs and Evacuation Route	Pembuatan, Perawatan, atau Normalisasi: Sungai, Kanal, Tanggul, Parit, Drainase, Waduk, Pantai, dll Engineering, Maintenance, or Normalization: Rivers, Canals, Dikes, Ditches, Drainages, Reservoirs, Beachs, etc
(1)	(2)	(3)	(4)	(5)	(6)
1.Caturtunggal	Tidak ada	-	Tidak Ada	Tidak ada	Ada
2.Maguwoharjo	Tidak ada	-	Ada	Tidak Ada	Ada
3.Candongcatur	Tidak ada	-	Ada	Tidak ada	ada

Catatan/Note: (-) bukan wilayah potensi tsunami
 Sumber/Source: BPS, Pendataan Potensi Desa (Podes) 2021/BPS, Village Potential Data Collection 2021

Tabel 4.19
Table

Banyaknya Embung Desa menurut Desa di Kecamatan Depok, 2020 dan 2021
Number of Village Embungs by Village in Depok Subdistrict, 2020 and 2021

Desa Villages	2020	2021
(1)	(2)	(3)
1. Caturtunggal	1	-
2. Maguwoharjo	-	-
3. Condongcatur	1	1
Kecamatan/Subdistrict	2	1

Sumber/Source: BPS, Pendataan Potensi Desa (Podes) 2021/BPS, Village Potential Data Collection 2021

Tabel
Table 4.20

Banyaknya Desa yang Memiliki Kelompok Kegiatan Olahraga Menurut Jenis Olahraga dan Ketersediaan Fasilitas/Lapangan Olahraga di Kecamatan Depok, 2021
Number of Villages having Sports Activity Groups by Type of Sport and Availability of Sports Facilities / Fields in Depok Subdistrict, 2021

Jenis Olahraga Type of Sports	Kondisi Fasilitas/ Lapangan Olahraga			Tidak Ada Fasilitas Lapangan Olahraga
	Baik	Rusak Sedang	Rusak Parah	
(1)	(2)	(3)	(4)	(5)
Sepak bola/Soccer	3	-	-	-
Bola voli/Volleyball	3	-	-	-
Bulu tangkis/Badminton	3	-	-	-
Bola basket/Basketball	3	-	-	-
Tenislapangan/Tennis court	3	-	-	-
Tenismeja/Table tennis	3	-	-	-
Futsal	3	-	-	-
Renang/Swimming	3	-	-	-
Bela diri (pencaksilat, karate, dll)/Martial arts (pencaksilat, karate, etc.)	3	-	-	-
Bilyard	1	-	-	2
Pusat kebugaran (senam, fitness, aerobik, dll)/Fitness center (gymnastics, fitness, aerobics, etc.)	3	-	-	-
Lainnya/Others	3	-	-	-

Sumber/Sources: BPS, Pendataan Potensi Desa (Podes) 2021/ BPS, Village Potential Data Collection 2021

Tabel
Table 4.21

Banyaknya Tempat Ibadah menurut Desa di Kecamatan Depok, 2021
Number of Religious Worship Facility by Villages in Depok Subdistrict, 2021

Desa Villages	Masjid Mosque	Mushola Small Mosque	Gereja/Church		Pura Temple	Vihara Monastery
			Katolik Catholic	Kristen Christian		
(1)	(2)	(3)	(4)	(5)	(6)	(7)
1. Caturtunggal	74	25	4	4	-	-
2. Maguwoharjo	58	48	3	5	-	-
3. Condongcatur	69	17	4	4	-	-
Kecamatan/ Subdistrict	201	90	11	14	-	-

Sumber/Source: BPS, Pendataan Potensi Desa (Podes) 2021/ BPS, Village Potential Data Collection 2021

PERTANIAN

Agriculture



Luas Lahan Sawah Kecamatan Depok Tahun 2021

Ricefield area in Depok Subdistrict, 2021

324 Ha



PENJELASAN TEKNIS

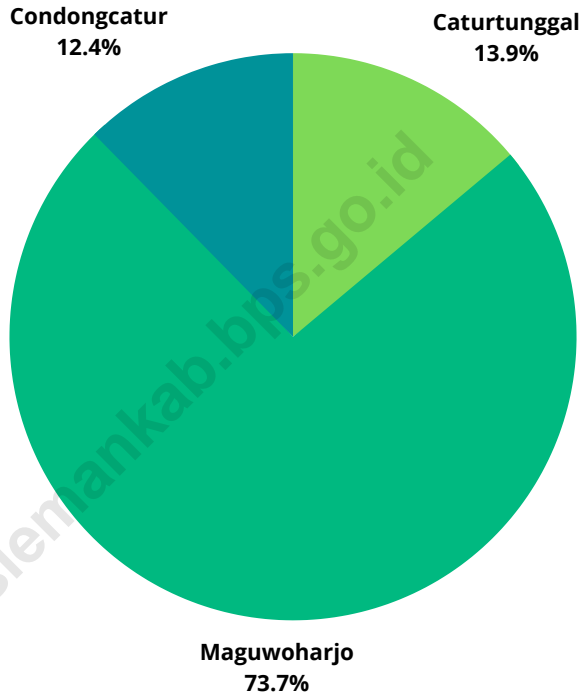
- Pertanian adalah kegiatan usaha yang meliputi budi daya tanaman pangan dan hortikultura, perkebunan, perikanan, kehutanan, dan peternakan.
- Penggunaan lahan dibedakan menjadi lahan sawah, lahan pertanian bukan sawah, dan lahan bukan pertanian. Lahan pertanian bukan sawah meliputi, tegal/kebun, tambak/ kolam/ tebat/empang.
- Luas lahan di Kecamatan Depok adalah 3.555 Ha, paling banyak dimanfaatkan untuk lahan bukan pertanian sebesar 2.953,41 Ha (83,20%).
- Untuk tanaman padi dan palawija, dilihat dari hasil produksi didominasi oleh tanaman padi sebanyak 4.300,72 ton.

TECHNICAL NOTES

- *Agriculture is a business activity which includes the cultivation of food crops and horticulture, plantation, fishery, forestry, and livestock.*
- *Land use is distinguished into wetland, non-rice fields, and non-agricultural land. Non-farm fields include, tegal / garden, pond / pond / tebat / pond.*
- *The land area in the Depok Subdistrict is 3,555 hectares, the most widely used for non-agriculture land of 2,540 hectares (71,44%).*
- *The most food crops production is paddy with 4,300.72 tons of production.*

Gambar 5.1
Figures

Persentase Luas Lahan Sawah per Desa di Kecamatan Depok (%), 2021
Percentage of Rice Fields Area by Villages in Depok Subdistrict (%), 2021



Sumber/Source: Dinas Pertanian, Pangan dan Perikanan Kabupaten Sleman/Agriculture, Food and Fisheries Service of Sleman Regency

Tabel
Table 5.1**Luas Tanah menurut Jenis Penggunaan menurut Desa di
Kecamatan Depok, 2021**
**Land Area by Type of Use per Village in Depok Subdistrict,
2021**

Desa Villages	Tanah Sawah Paddy Fiels	Tegal/Kebun Garden	Lainnya Others	Lahan Pertanian Bukan Sawah	Lahan Bukan Pertanian
(1)	(2)	(3)	(4)	(5)	(6)
1. Caturtunggal	45,00	95	8,00	124,68	863,32
2. Maguwoharjo	238,78	159,31	17,00	176,31	1 029,69
3. Condongcatur	40	36,85	9,00	45,85	835,15
Kecamatan/ Subdistrict	323,78	291,16	34	346,84	2 728,16

Sumber/Source: Dinas Pertanian, Pangan dan Perikanan Kabupaten Sleman/Agriculture, Food and Fisheries Service of Sleman Regency

Tabel
Table 5.2

Luas Panen dan Produksi Padi Sawah menurut Desa di Kecamatan Depok, 2021
Harvested Area, and Production of Wetland Pady by Villages in Depok Subdistrict, 2021

Desa Villages	Luas Panen Harvested Area (Ha)	Produksi Production (Ton)
(1)	(2)	(3)
1. Caturtunggal	128	754,30
2. Maguwoharjo	275	1 620,57
3. Condongcatur	89	524,47
Kecamatan/Subdistrict	376,8	2 899,35

Sumber/Source: Dinas Pertanian, Pangan dan Perikanan Kabupaten Sleman/Agriculture, Food and Fisheries Service of Sleman Regency

Tabel
Table 5.3

**Luas Panen dan Produksi Jagung menurut Desa di
Kecamatan Depok, 2021**
*Harvested Area, and Production of Maize by Villages in
Depok Subdistrict, 2021*

Desa Villages	Luas Panen Harvested Area (Ha)	Produksi Production (Ton)
(1)	(2)	(3)
1. Caturtunggal	-	-
2. Maguwoharjo	9	543,87
3. Condongcatur	-	-
Kecamatan/Subdistrict	9	543,87

Sumber/Source: Dinas Pertanian, Pangan dan Perikanan Kabupaten Sleman/Agriculture, Food and Fisheries Service of Sleman Regency

Tabel
Table 5.4

Luas Panen, dan Produksi Ubi Kayu menurut Desa di Kecamatan Depok, 2021
Planted Area, Harvested Area, and Production of Cassava per Village In Depok Subdistrict, 2021

Desa Villages	Luas Panen Harvested Area (Ha)	Produksi Production (Ton)
(1)	(2)	(3)
1. Caturtunggal	-	-
2. Maguwoharjo	3	54,90
3. Condongcatur	-	-
Kecamatan/Subdistrict	3	54,90

Sumber/Source: Dinas Pertanian, Pangan dan Perikanan Kabupaten Sleman/Agriculture, Food and Fisheries Service of Sleman Regency

Tabel
Table 5.5

**Luas Panen dan Produksi Ubi Jalar menurut Desa di
Kecamatan Depok, 2021**
*Planted Area, Harvested Area, and Production of Sweet
Potato per Village in Depok Subdistrict, 2021*

Desa Villages	Luas Panen Harvested Area (Ha)	Produksi Production (Ton)
(1)	(2)	(3)
1. Caturtunggal	-	-
2. Maguwoharjo	-	-
3. Condongcatur	-	-
Kecamatan/Subdistrict	-	-

Sumber/Source: Dinas Pertanian, Pangan dan Perikanan Kabupaten Sleman/Agriculture, Food and Fisheries Service of Sleman Regency

Tabel 5.6 Luas Panen dan Produksi Kacang Tanah menurut Desa di Kecamatan Depok, 2021
Table 5.6 *Harvested Area and Production of Peanuts per Village In Depok Subdistrict, 2021*

Desa Villages	Luas Panen Harvested Area (Ha)	Produksi Production (Ton)
(1)	(2)	(3)
1. Caturtunggal	0	0
2. Maguwoharjo	3,57	34,84
3. Condongcatur	1,2	11,71
Kecamatan/Subdistrict	4,77	46,55

Sumber/Source: Dinas Pertanian, Pangan dan Perikanan Kabupaten Sleman/Agriculture, Food and Fisheries Service of Sleman Regency

KEUANGAN & PARIWISATA

Finance & Tourism



101



2.169



213



BANYAKNYA SARANA & PRASARANA EKONOMI DI KECAMATAN DEPOK 2021

Number of Economic Facilities and Infrastructure by Types in Depok Subdistrict, 2021

5



141



2.911



PENJELASAN TEKNIS

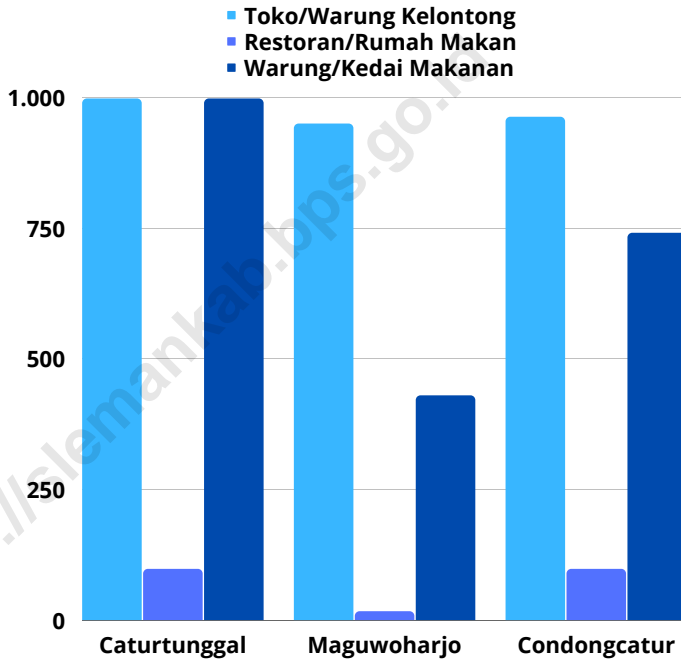
- Pasar sebagai roda penggerak ekonomi masyarakat membedakan 2 segmen sebagai sasarannya. Pasar tradisional dibuat untuk segmen masyarakat ekonomi menengah ke bawah. Sedangkan segmen pasar modern adalah masyarakat ekonomi menengah ke atas .
- Pasar tradisional Kecamatan Depok yang dikelola oleh Dinas Pasar Kabupaten Sleman berjumlah 5 unit. Sementara itu, untuk minimarket/swalayan di Kecamatan Depok ada sebanyak 141 unit
- Kecamatan Depok yang merupakan pusat perkotaan bagi Kabupaten Sleman juga memiliki Hotel Berbintang sebanyak 103 unit dan Hotel Melati sebanyak 148 unit. Kedua jenis hotel tersebut paling banyak berada di Desa Caturtunggal

TECHNICAL NOTES

- *Market as the driving wheel of society economy distinguish 2 segment as its target. Traditional markets are made for the middle to lower economic segment. While the modern market segment is middle and upper economic society.*
- *The traditional market of Depok Subdistrict managed by the Market Office of Sleman Regency is 7 units. Meanwhile, for minimarket Depok Subdistrict has 141 units.*
- *Depok Subdistrict which is the urban center for Sleman Regency also has 103 Star Hotel and 148 non-star hotel. Both types of hotels are mostly located in the Village Caturtunggal.*

Gambar 6.1
Figures

Banyaknya Sarana dan Prasarana Ekonomi di Kecamatan Depok, 2021
Number of Economic Facilities and Infrastructure in Depok Subdistrict, 2021



Sumber/Source: BPS, Pendataan Potensi Desa (Podes) 2021/BPS, Village Potential Data Collection (Podes) 2021

Tabel
Table 6.1**Banyaknya Sarana dan Prasarana Ekonomi menurut Desa di Kecamatan Depok, 2021**
Number of Economic Facilities and Infrastructure According to Village and Types in Depok Subdistrict, 2021

Desa Villages	Kelompok Pertokoan	Pasar dengan Bangunan Permanen	Pasar dengan Bangunan Semi Permanen	Pasar Tanpa Bangunan	Minimarket/ Swalayan 1 Minimarket/ Supermarket
(1)	(2)	(3)	(4)	(5)	(6)
1. Caturtunggal	81	1	-	1	62
2. Maguwoharjo	7	2	2	-	34
3. Condongcatur	13	2	-	-	45
Kecamatan/ Subdistrict	101	5	2	1	141

Lanjutan Tabel/Continued Table 6.1

Desa Villages	Toko/Warung Kelontong Shop/Grocery Store	Restoran/ Rumah Makan Restaurant/ Food Stall	Warung/Kedai Makanan Stall/Food stall	Hotel Hotel	Hotel/Motel /Losmen/ Wisma
(1)	(7)	(8)	(9)	(10)	(11)
1. Caturtunggal	998	98	998	72	67
2. Maguwoharjo	950	17	430	14	19
3. Condongcatur	963	98	741	17	62
Kecamatan/ Subdistrict	2 911	213	2 169	103	148

Sumber/Source: BPS, Pendataan Potensi Desa (Podes) 2021/BPS, Village Potential Data Collection (Podes) 2021

Tabel
Table 6.2**Banyaknya Sarana Lembaga Keuangan yang Beroperasi menurut Desa di Kecamatan Depok, 2021**
Number of Facilities of Financial Institutions Operating by Village and Types in Depok Subdistrict, 2021

Desa <i>Villages</i>	Bank Umum Pemerintah	Bank Umum Swasta	Bank Perkreditan Rakyat
(1)	(2)	(3)	(4)
1. Caturtunggal	19	22	28
2. Maguwoharjo	5	2	3
3. Condongcatur	5	4	4
Kecamatan/Subdistrict	29	28	35

Sumber/Source: BPS, Pendataan Potensi Desa (Podes) 2021/BPS, Village Potential Data Collection (Podes) 2021

Tabel
Table 6.3**Banyaknya Koperasi yang Masih Aktif menurut Desa di Kecamatan Depok, 2021**
Numbers of Active Cooperatives by Villages in Depok Subdistrict, 2021

Desa Villages	Koperasi Unit desa (KUD)	Koperasi Industri Kecil dan Kerajinan Rakyat (Kopinkra)	Koperasi Simpan Pinjam	Koperasi Lainnya
(1)	(2)	(3)	(4)	(5)
1. Caturtunggal	-	-	1	-
2. Maguwoharjo	-	-	3	-
3. Condongcatur	-	-	3	-
Kecamatan/Subdistrict	-	-	7	-

Sumber/Source: BPS, Pendataan Potensi Desa (Podes) 2021/BPS, Village Potential Data Collection (Podes) 2021

Tabel
Table 6.4**Banyaknya Wajib Pajak, Pokok Pajak, dan Pemasukan PBB
menurut Desa di Kecamatan Depok, 2021**
**Number of Taxpayers, Principal Tax and Tax Income per
village in the Subdistrict of Depok, 2021**

Desa Villages	Wajib Pajak Taxpayers	Pokok Pajak Principal Tax	Pemasukan PBB Tax Income	Persentase Percentage
(1)	(2)	(3)	(4)	(5)
1. Caturtunggal	17 102	13 936 329 435	10 028 766 512	63,21
2. Maguwoharjo	15 716	8 591 107 745	6 590 151 322	60,95
3. Condongcatur	16 412	7 618 821 282	5 899 430 572	68,72
Kecamatan/Subdistrict	49 230	30 146 258 462	22 518 348 586	64,33

Sumber/Source: Badan Keuangan dan Aset Daerah Kabupaten Sleman / BKAD Kabupaten Sleman

TRANSPORTASI & KOMUNIKASI

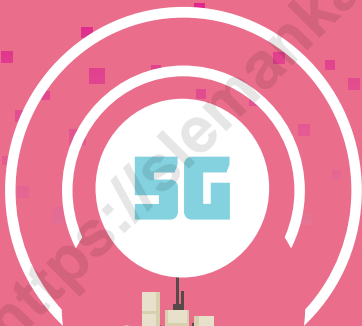
Transportation & Communication



★ Bab/Chapter ★

KONDISI SINYAL KUAT DI SEBAGIAN BESAR WILAYAH DESA/KELURAHAN DI KECAMATAN DEPOK

Depok Subdistrict had good celluler signal around their villages.



155
MENARA
TELEPON SELULER

*There were 155 towers of celluler telephone
in Depok Subdistrict, 2021.*



PENJELASAN TEKNIS

- Kondisi jalan antar desa akan turut menentukan kelancaran pergerakan penduduk. Di Kecamatan Depok, jalan antar desa berupa jalan aspal yang bisa dilalui sepanjang tahun, baik musim hujan maupun musim kemarau.

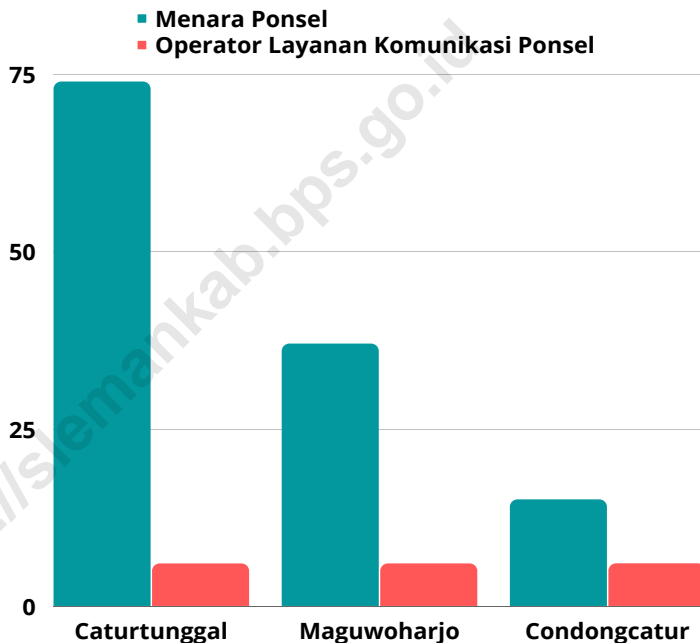
TECHNICAL NOTES

- *The road conditions between villages will also determine the smooth movement of the population. In Depok Subdistrict, the inter-village road is an asphalt road that can be traversed all year round, both in the rainy season and the dry season.*

<https://slemankab.bps.go.id>

Gambar 7.1
Figures

Banyaknya Menara dan Operator Layanan Komunikasi Telepon Seluler menurut Desa di Kecamatan Depok, 2021
Number of Towers and Cellular Telephone Communication Service Operators by Village in Depok Subdistrict, 2021



Sumber/Source: BPS, PendataanPotensiDesa (Podes) 2021/BPS, Village Potential Data Collection 2021

Tabel 7.1
Table

**Sarana Transportasi Antar Desa menurut Desa di
Kecamatan Depok, 2021**
*Inter-Village Transportation Facilities According to Villages
in Depok Subdistrict, 2021*

Desa Villages	JenisTransportasi Transportation Type	Keberadaan AngkutanUmum Existence of Public Transportation
(1)	(2)	(3)
1. Caturtunggal	Darat	Ada, trayek tetap
2. Maguwoharjo	Darat	Ada, trayek tetap
3. Condongcatur	Darat	Ada, trayek tetap

Sumber/Source: BPS, PendataanPotensiDesa (Podes) 2021/BPS, Village Potential Data Collection 2021

Tabel
Table 7.2

**Kondisi Jalan Darat Antar Desa menurut Desa di
Kecamatan Depok, 2021**
*Inter-Village Land Condition According to the Village in
Depok Subdistrict, 2021*

Desa Villages	Jenis Permukaan Jalan Road Surface Type	Dapat Dilalui Kendaraan Bermotor Roda 4 atau Lebih Can be passed by 4 or more wheels motorized vehicles
(1)	(2)	(3)
1. Caturtunggal	Aspal	Sepanjang tahun
2. Maguwoharjo	Aspal	Sepanjang tahun
3. Condongcatur	Aspal	Sepanjang tahun

Sumber/Source: BPS, PendataanPotensiDesa (Podes) 2021/BPS, Village Potential Data Collection 2021

Tabel
Table 7.3

Keberadaan Kantor Pos/Pos Pembantu/ Rumah Pos dan Perusahaan/Agen Jasa Ekspedisi Swasta menurut Desa di Kecamatan Depok, 2021
Existence of Post Offices / Auxiliary Posts / Post Houses and Companies / Private Expedition Agencies by Village in Depok Subdistrict, 2021

Desa Villages	Kantor Pos/Pos Pembantu/ Rumah Pos	Perusahaan/Agen Jasa Ekspedisi Swasta
(1)	(2)	(3)
1. Caturtunggal	Beroperasi	Beroperasi
2. Maguwoharjo	Beroperasi	Beroperasi
3. Condongcatur	Beroperasi	Beroperasi

Sumber/Source: BPS, Pendataan Potensi Desa (Podes) 2021/BPS, Village Potential Data Collection 2021

Tabel
Table 7.4

**Jumlah Menara dan Operator Layanan Komunikasi
Telepon Seluler serta Kondisi Sinyal Telepon menurut
Desa di Kecamatan Depok, 2021**
*Number of Towers and Cellular Telephone Communication
Service Operators and Cellular Signal Signal Conditions by
Village in Depok Subdistrict, 2021*

Desa <i>Villages</i>	Jumlah Menara Telepon Seluler	Jumlah Operator Layanan Komunikasi Telepon Seluler yang Menjangkau Desa	Kondisi Sinyal Telepon Seluler di Sebagian Besar Wilayah Desa
(1)	(2)	(3)	(4)
1. Caturtunggal	74	6	Sangat kuat
2. Maguwoharjo	37	6	Sangat kuat
3. Condongcatur	44	6	Sangat kuat
Kecamatan/Subdistrict	155	18	

Sumber/Source: BPS, PendataanPotensiDesa (Podes) 2021/BPS, Village Potential Data Collection 2021

DATA

MENCERDASKAN BANGSA

— Enlighten The Nation —



**BADAN PUSAT STATISTIK
KABUPATEN SLEMAN**
BPS-Statistics of Sleman Regency

Jl. P. Purboyo, Tundan, Sumberadi, Mlati, Sleman
Telp./Fax. 0274 868422, 566656
E-mail : bps3404@mailhost.bps.go.id

