

Kecamatan

UBUD DALAM ANGKA

Ubud Subdistrict in Figures

2018



**BADAN PUSAT STATISTIK
KABUPATEN GIANYAR
BPS-Statistics of Gianyar Regency**

Kecamatan

UBUD DALAM ANGKA

Ubud Subdistrict in Figures

2018



KECAMATAN UBUD DALAM ANGKA 2018

Ubud Subdistrict in Figures 2018

ISSN : 2502-3098

No Publikasi/ *Publication Number* : 51040.1808

Katalog BPS/ *BPS Catalog* : 1102001.5104050

Ukuran Buku/ *Book Size* : 14,8 cm x 21 cm

Jumlah Halaman/ *Number of Pages* : XX + 90 halaman/ *pages*

Naskah/ *Manuscript* :

Badan Pusat Statistik Kabupaten Gianyar

BPS-Statistics Indonesia of Gianyar

Gambar Kover oleh/ *Coper Design by*:

Badan Pusat Statistik Kabupaten Gianyar

BPS-Statistics Indonesia of Gianyar

Ilustrasi Kover/ *Cover Illustration* :

Pura Taman Pule Mas/ *Taman Pule Mas Temple*

Diterbitkan oleh/ *Published by* :

©Badan Pusat Statistik Kabupaten Gianyar

©*BPS-Statistics Indonesia of Gianyar*

Dicetak oleh/ *Printed by*:

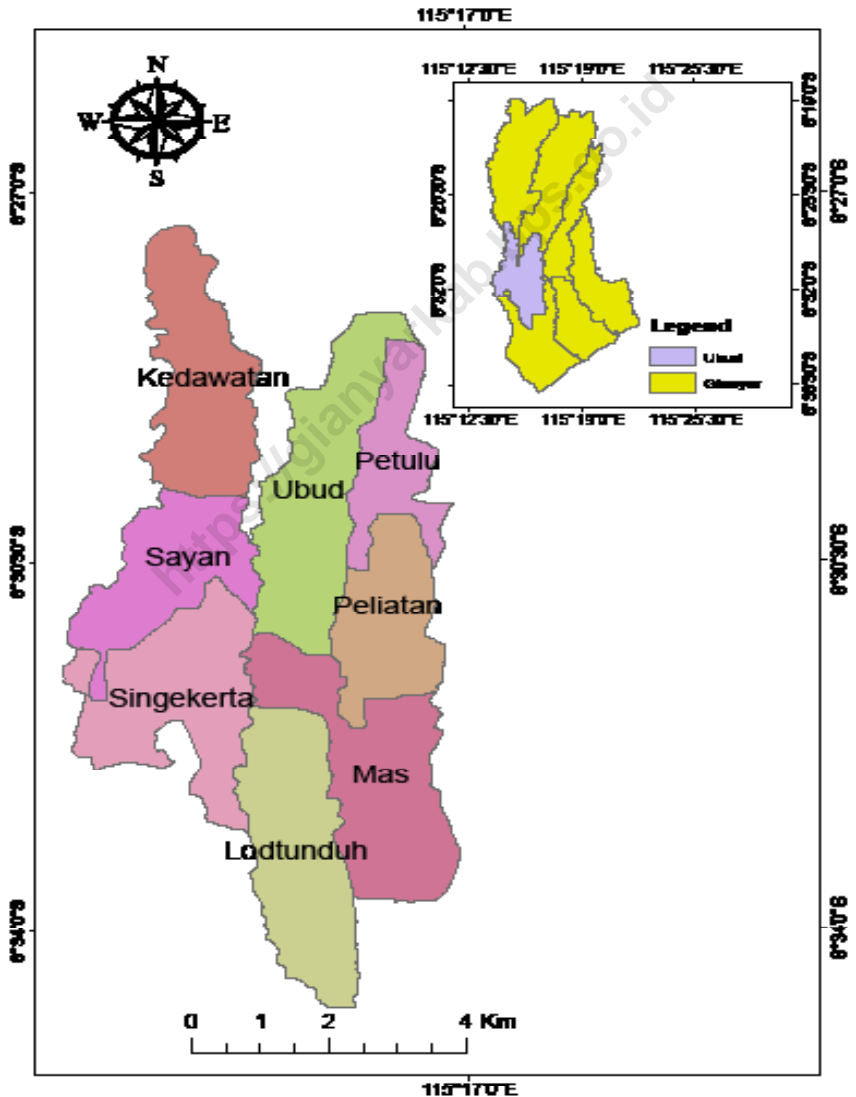
UD. Astarti, Jl. Letda Jaya No.27, Tlp (0361) 225672, Denpasar

Dilarang mengumumkan, mendistribusikan, mengomunikasikan, dan/atau menggandakan sebagian atau seluruh isi buku ini untuk tujuan komersial tanpa izin tertulis dari Badan Pusat Statistik

Prohibited to announce, distribute, communicate, and/or copy part or all of this book for commercial purposes without permission from BPS-Statistics Indonesia

PETA KECAMATAN UBUD

MAP OF UBUD REGENCY



KEPALA BPS KABUPATEN GIANYAR
CHIEF OF STATISTICS OF GIANYAR REGENCY



Dr.YUDI AGUSTA, M.Sc



KATA PENGANTAR

“Kecamatan Ubud Dalam Angka 2018” ini merupakan publikasi tahunan yang wajib diterbitkan oleh Koordinator Statistik Kecamatan Ubud. Penerbitan publikasi ini merupakan kelanjutan dari publikasi serupa pada tahun-tahun sebelumnya.

Publikasi “Kecamatan Ubud Dalam Angka 2018” menyajikan beragam jenis data yang bersumber dari BPS dan instansi lain. Publikasi ini memuat gambaran umum tentang keadaan geografi, pemerintahan, serta perkembangan sosial demografi dan perekonomian di Kecamatan Ubud.

Publikasi ini dapat terwujud berkat kerja sama dan bantuan dari berbagai pihak. Kepada semua pihak yang telah memberi kontribusi, kami sampaikan penghargaan dan terima kasih. Semoga data yang kami sajikan memberi manfaat bagi banyak pihak. Kami mengharapkan tanggapan dan saran dari para pengguna publikasi ini untuk perbaikan edisi yang akan datang.

Ubud, September 2018
Kepala Badan Pusat Statistik
Kabupaten Gianyar

Dr. Yudi Agusta M.Sc



PREFACE

“Ubud District in Figure 2018” is an annual publication which shall be issued by the District Coordinator Statistics of Ubud. this publication is a continuation of a similar publication in previous years.

This publication is presenting various data from BPS Statistics of Gianyar and other agencies. The publication provides general pictures of geographic conditions, government, and key socio demographic and economic characteristics of Ubud District.

The release of this comprehensive publication has been made possible due to the assistance and contributions of various government institutions and private organizations. To all parties who have been involved the preparation of this publication, I would like to express my high appreciation and gratitude. Hopefully this publication will be usefull resource for any purpose. Comment and suggestions to improve the contents of this publication are always welcome.

*Ubud, July 2018
Chief Of Statistics Of
Gianyar Regency*

Dr. Yudi Agusta M.Sc.

DAFTAR ISI CONTENT

	Halaman <i>Page</i>
Halaman Katalog.....	ii
Peta Wilayah Kecamatan Ubud / <i>Map of Ubud Regency</i>	iii
Foto Kepala BPS Gianyar/ <i>Picture of Statistics of Gianyar Regency</i>	iv
Kata Pengantar/ <i>Preface</i>	v
Daftar Isi/ <i>Content</i>	vii
Daftar Tabel/ <i>List of Tables</i>	ix
Bab I Keadaan Geografis/ <i>Geography</i>	1
Bab II Pemerintahan/ <i>Government</i>	7
Bab III Penduduk & Tenaga Kerja/ <i>Population & Employment</i>	15
Bab IV Sosial/ <i>Social</i>	25
Bab V Pertanian/ <i>Agriculture</i>	43
Bab VI Perindustrian/ <i>Industri</i>	67
Bab VII Perdagangan/ <i>Trading</i>	71
Bab VIII Transportasi, Komunikasi dan Rariwisata/ <i>Transportation, Communication and Tourism</i>	75
Bab IX Keuangan/ <i>Financial</i>	79

DAFTAR TABEL

LIST OF TABLE

Tabel		Halaman
Table		Pages
1	Keadaan Geografi/Geographic	
1.1	Letak, Status, Ketinggian Serta Klasifikasi Desa/ Kelurahan di Kecamatan Ubud,2017 <i>Location, Status, Height and Classification Things by Village in Ubud Subdistrict, 2017</i>	3
1.2	Luas Wilayah Penggunaan Tanah Menurut Desa/ Kelurahan di Kecamatan Ubud, 2017(Ha) <i>According to Area The Land Utilization Situation End by Village in Ubud Subdistrict, 2017 (Ha)</i>	4
1.3	Luas Lahan Sawah dan Jenis Pengairan Menurut Desa/ Kelurahan di Kecamatan Ubud, 2017 (Ha) <i>Area of Rice By Villages and Irrigation by Village in Ubud Subdistrict, 2017(Ha)</i>	5
1.4	Luas Lahan Pertanian Bukan Sawah Menurut Desa/ Kelurahan di Kecamatan Ubud, 2017 (Ha) <i>Area of Agricultural Not Rice, Detailed By Utilization by Village in Ubud Subdistrict, 2017 (Ha)</i>	6
2	Pemerintahan/Government	
2.1	Banyaknya Desa Adat, Banjar dan Pamong Desa Menurut Desa/Kelurahan di Kecamatan Ubud, 2017 <i>Number of Desa Adat, Banjar and Civil Detailed by Village in Ubud Subdistrict, 2017</i>	9
2.2	Banyaknya Aparat Pemerintahan Menurut Desa/ Kelurahan di Kecamatan Ubud, 2017 <i>The number of Village Government officials by Village in Ubud Subdistrict, 2017</i>	10

DAFTAR TABEL LIST OF TABLE

Tabel Table	Halaman Pages
<p>2.3 Jarak Desa/Kelurahan ke Ibu Kota Kecamatan, 2017 <i>Distance to Village Capital District State Village in Ubud Subdistrict, 2017</i>.....</p>	11
<p>2.4 Banyaknya Pos Keamanan dan Jumlah Personil Menurut Desa/Kelurahan di Kecamatan Ubud, 2017 <i>Post Number and Number of Personnel Saefy Detailed by Village in Ubud Subdistrict, 2017</i>.....</p>	12
<p>2.5 Jumlah Hansip yang Ditatar, Pembinaan dan Bantuan Pakaian Menurut Desa/Kelurahan di Kecamatan Ubud 2017 <i>The Civil Defense total Training, Guidance and Assistance in Clothing by Village in Ubud Subdistrict, 2017</i>.....</p>	13
<p>3 Penduduk & Ketenagakerjaan/ Population & Employment</p>	
<p>3.1 Luas Tanah, Jumlah Penduduk dan Kepadatan Penduduk Menurut Kecamatan di Kabupaten Gianyar, 2017 <i>Land Area, Total Population and Population Density Detailed by Subdistrict of Gianyar Regerency, 2017</i></p>	17
<p>3.2 Penduduk Menurut Jenis Kelamin dan Sex Ratio Per Kecamatan di Kabupaten Gianyar, 2017 <i>Mid Year Population According to gender and Sex Ratio by Subdistrict of Gianyar Regerency, 2017</i></p>	18
<p>3.3 Penduduk Menurut Kelompok Umur dan Jenis Kelamin Per Desa/Kelurahan di Kecamatan Ubud, 2017 <i>Population by Age Group and Gender Detailed Situation by Village in Ubud Subdistrict, 2017</i></p>	19

DAFTAR TABEL LIST OF TABLE

Tabel <i>Table</i>		Halaman <i>Pages</i>
3.4	Jumlah Kelahiran dan Kematian Menurut Jenis Kelamin per Desa/Kelurahan di Kecamatan Ubud, 2017 <i>Number of Births and Deaths According to Sex of the by Village in Ubud Subdistrict, 2017.....</i>	23
3.5	Jumlah Penduduk Datang dan Pergi Menurut Jenis Kelamin per Desa/Kelurahan di Kecamatan Ubud, 2017 <i>Population Come and Go According to Gender by Village in Ubud Subdistrict, 2017.....</i>	24
4	Sosial <i>Social</i>	
4.1.1	Banyaknya Sekolah Menurut Jenjang Pendidikan Dirinci per Desa/Kelurahan di Kecamatan Ubud, 2017 <i>Number of Schools by Level of Education by Village in Ubud Subdistrict, 2017.....</i>	27
4.1.2	Banyaknya Guru Menurut Jenjang Pendidikan Tempat Mengajar Dirinci per Desa/Kelurahan di Kecamatan Ubud, 2017 <i>Number of Teachers by Level of Education by Village in Ubud Subdistrict, 2017.....</i>	28

DAFTAR TABEL LIST OF TABLE

Tabel <i>Table</i>	Halaman <i>Pages</i>
4.1.3 Banyaknya Murid Menurut Jenjang Pendidikan Dirinci per Desa/Kelurahan di Kecamatan Ubud, 2017 <i>Number of Students by Level of Education by Village in Ubud Subdistrict, 2017.....</i>	29
4.1.4 Ratio Murid dan Guru Menurut Jenjang Pendidikan di Rinci per Desa/Kelurahan di Kecamatan ubud,2017 <i>Student and Teacher Ratio by Level of Education by Village in Ubud Subdistrict, 2017.....</i>	32
4.1.5 Banyaknya Organisasi Sosial Desa Menurut Jenisnya Dirinci per Desa/Kelurahan di Kecamatan Ubud, 2017 <i>Total Village Social Organitations by Kind per Village by Village in Ubud Subdistrict, 2017.....</i>	33
4.1.6 Banyaknya Organisasi Kesenian Dirinci Menurut Jenisnya per Desa/Kelurahan di Kecamatan Ubud Tahun, 2017 <i>Number of Art Organizations by Kind in by Village in Ubud Subdistrict, 2017.....</i>	34
4.1.7 Banyaknya Lapangan olahraga Dirinci Menurut Jenisnya per Desa/Kelurahan di Kecamatan Ubud, 2017 <i>Number of Sports Field by Kind by Village in Ubud Subdistrict, 2017.....</i>	35

DAFTAR TABEL LIST OF TABLE

Tabel <i>Table</i>	Halaman <i>Pages</i>
<p>4.2.1 Banyaknya Fasilitas dan Sarana Kesehatan Dirinci Menurut Jenisnya per Desa/Kelurahan di Kecamatan Ubud, 2017 <i>Number of Health Facilities by Kind by Village in Ubud Subdistrict, 2017.....</i></p>	36
<p>4.2.2 Banyaknya Tenaga Kesehatan dan Jenisnya Menurut Unit Kesehatan per Kecamatan di Kabupaten Gianyar 2017 <i>Number of Health Workers and Caind by Unit Subdistrict, of Gianyar Regerency, 2017.....</i></p>	37
<p>4.2.3 .Banyaknya Aseptor KB Dirinci Menurut Alat Kontrasepsi yang Digunakan per Desa/Kelurahan di Kecamatan Ubud, 2017 <i>Number of Family Planning Acceptors by Type of Contraceptive by Village in Ubud Subdistrict, 2017.....</i></p>	38
<p>4.2.4 Jumlah Panti Asuhan dan Penderita Cacat Dirinci Menurut Jenisnya per Desa/Kelurahan di Kecamatan Ubud, 2017 <i>Number of Orphanage And Disabilities by Village in Ubud Subdistrict, 2017.....</i></p>	39
<p>4.3.1 Jumlah Tempat Ibadah Dirinci Menurut Jenisnya per Desa/Kelurahan di Kecamatan Ubud, 2017 <i>Number of Facilities for Worship by Village in Ubud Subdistrict, 2017.....</i></p>	40

DAFTAR TABEL LIST OF TABLE

Tabel <i>Table</i>	Halaman <i>Pages</i>
4.3.2 Banyaknya Pemuka Agama/ Aliran Kepercayaan Terhadap Tuhan Yang Maha Esa per Desa/Kelurahan di Kecamatan Ubud, 2017 <i>Number of Religious Leaders by Village in Ubud Subdistrict, 2017.....</i>	41
5 Pertanian/Agricultural	
5.1 Luas Tanam, Panen, Produksi dan Produktifitas Padi Dirinci per Desa/Kelurahan di Kecamatan Ubud, 2017 <i>Planting, Harvest, Rice Production and Productivity Detailed per Village by Village in Ubud Subdistrict, 2017.....</i>	45
5.2 Luas Tanam, Panen, Produksi dan Produktifitas Jagung Dirinci per Desa/Kelurahan di Kecamatan Ubud, 2017 <i>Planting, Harvest, Maize Production and Productivity Detailed by Village in Ubud Subdistrict, 2017.....</i>	46
5.3 Luas Tanam, Panen, Produksi dan Produktifitas Ubi Jalar Dirinci per Desa/Kelurahan di Kecamatan Ubud, 2017 <i>Planting, Harvest, Production and Productivity of Sweet Potatoes Detailed by Village in Ubud Subdistrict, 2017.....</i>	87

DAFTAR TABEL LIST OF TABLE

Tabel <i>Table</i>	Halaman <i>Pages</i>
<p>5.4 Luas Tanam, Panen, Produksi dan Produktifitas Ubi Kayu Dirinci per Desa/Kelurahan di Kecamatan Ubud, 2017 <i>Planting, Harvest, Production and Productivity of Cassava Detailed Village by Village in Ubud Subdistrict, 2017.....</i></p>	48
<p>5.5 Luas Tanam, Panen, Produksi dan Produktifitas Kacang Tanah Dirinci per Desa/Kelurahan di Kecamatan Ubud, 2017 <i>Planting, Harvest, Production and Productivity Peanut Detailed by Village in Ubud Subdistrict, 2017.....</i></p>	49
<p>5.6 Luas Tanam, Panen, Produksi dan Produktifitas Kacang Kedelai Dirinci per Desa/Kelurahan di Kecamatan Ubud, 2017 <i>Planting, harvest, Production and Productivity of Soy bean Detailed by Village in Ubud Subdistrict, 2017.....</i></p>	50
<p>5.7 Luas Tanam, Panen, Produksi dan Produktifitas Kacang Hijau Dirinci per Desa/Kelurahan di Kecamatan Ubud, 2017 <i>Planting, Harvest, Production and Productivity Mung Detailed by Village in Ubud Subdistrict, 2017.....</i></p>	51
<p>5.8 Jumlah Pohon dan Produksi Tanaman Buah-Buahan Dirinci per Desa/Kelurahan di Kecamatan Ubud Tahun, 2017 <i>Number of Production Plants and Trees Fruits Detailed by Village in Ubud Subdistrict, 2017.....</i></p>	52

DAFTAR TABEL LIST OF TABLE

Tabel <i>Table</i>	Halaman <i>Pages</i>
<p>5.9 Luas Tanam dan Produksi Perkebunan Rakyat Menurut Desa/Kelurahan di Kecamatan Ubud, 2017 <i>Planting and Plantation Production of the Village People's Detailed by Village in Ubud Subdistrict, 2017.....</i></p>	58
<p>5.10 Banyaknya Populasi Ternak Menurut Jenisnya Dirinci per Desa/Kelurahan di Kecamatan Ubud, 2017 <i>Number of Livestock Population Detailed by Kind by Village in Ubud Subdistrict, 2017.....</i></p>	61
<p>5.11 Banyaknya Populasi Unggas Menurut Jenisnya Dirinci per Desa/Kelurahan di Kecamatan Ubud, 2017 <i>By Kind of Poultry Population per Village Detailed by Village in Ubud Subdistrict, 2017.....</i></p>	63
<p>5.12 Produksi Ikan Dirinci Menurut Jenisnya per Desa /Kelurahan di Kecamatan Ubud, 2017 <i>Detailed Fish Production by Kind by Village in Ubud Subdistrict, 2017.....</i></p>	64
<p>5.13 Jumlah Subak dan Luas Areal Baku Subak Dirinci Menurut Jenis Irigasi per Desa/Kelurahan di Kecamatan Ubud, 2017 <i>Number of Subak and Baku Area Detailed Subak Irrigation by Type by Village in Ubud Subdistrict, 2017.....</i></p>	65

DAFTAR TABEL LIST OF TABLE

Tabel <i>Table</i>		Halaman <i>Pages</i>
6	Perindustrian /Industry	
6.1	Banyaknya Perusahaan Industri Menurut Kelompok Industri Dirinci per Desa /Kelurahan di Kecamatan Ubud, 2017 <i>Number of Industrial Companies by Group of Industry by Village in Ubud Subdistrict, 2017.....</i>	69
6.2	Jumlah Tenaga Kerja Perusahaan Industri Menurut Kelompok Industri Dirinci per Desa/Kelurahan di Kecamatan Ubud, 2017 <i>Number of Industrial Companies Workers by Group of Industry by Village in Ubud Subdistrict, 2017.....</i>	70
7	Perdagangan Trading	
7.1	Jumlah Sarana Perekonomian Menurut Jenisnya Dirinci per Desa/Kelurahan di Kecamatan Ubud, 2017 <i>Total Economic Facilities by Kind by Village in Ubud Subdistrict, 2017.....</i>	73

DAFTAR TABEL LIST OF TABLE

Tabel <i>Table</i>	Halaman <i>Pages</i>
<p>8</p> <p>Transportasi, Komonikasi dan Pariwisata/<i>Transportation, Comonication and tourism</i></p>	
<p>8.1 Panjang Jalan Menurut Jenis Permukaan Jalan dan Jumlah Jembatan di Rinci per Desa/Kelurahan di kecamatan Ubud, 2017 <i>Length of Roads by Type of Road Surface Condition and Number of Bridge by Village in Ubud Subdistrict, 2017...</i></p>	76
<p>8.2 Banyaknya Sarana Komunikasi Menurut Jenisnya Dirinci per Desa/Kelurahan di Kecamatan Ubud, 2017 <i>Number of Communication Facility by Village in Ubud Subdistrict, 2017.....</i></p>	77
<p>9</p> <p>Keuangan <i>Financial</i></p>	
<p>9.1 Jumlah Sarana Bank dan Lembaga Keuangan Lainnya Dirinci per Desa/Kelurahan di Kecamatan Ubud 2017 <i>Total Bank Facilities and Other Financial Institutions by Village in Ubud Subdistrict, 2017.....</i></p>	80

DAFTAR TABEL LIST OF TABLE

Tabel <i>Table</i>	Halaman <i>Pages</i>
<p>9.2 Banyaknya Usaha Koperasi Menurut Kecamatan di Kabupaten Gianyar , 2017 <i>Number of Cooperatives Subdistrict in Gianyar Regerency Subdistrict, 2017.....</i></p>	81
<p>9.3 Pendapatan dan Pengeluaran Pemerintah Desa Menurut Sumber dan Jenis Pengeluaran Dirinci per Desa/Kelurahan di Kecamatan Ubud 2017 (Rp. 000,-) <i>Government Revenues and Expenditures by Type of Expenditures by Village in Ubud Subdistrict, 2017 (Rp. 000,-).....</i></p>	82
<p>9.4 Penerimaan Pembangunan Desa Menurut Sumber Penerimaan Dirinci per Desa/Kelurahan di Kecamatan Ubud,2017 (Rp. 000,-) <i>Village Development Acceptances by Type of Revenues by Village in Ubud Subdistrict, 2017 (Rp. 000,-).....</i></p>	83



KEADAAN GEOGRAFI
GEOGRAPHY



Tabel 1.1: **Letak, Status, Ketinggian Serta Klasifikasi Desa/ Kelurahan di Kecamatan Ubud, 2017**
Location, Status, Height and Classification Village Things by Village in Ubud Subdistrict, 2017

Desa/Villages	Letak Desa/ Villages Location		Status Desa/ Villages Status	Ketinggian dari Permukaan Laut (m)/The height of the sea surface (m)			Klasifikasi Desa/ Cassification of Villages			
	Pantai/ beach	Non Pantai/no Beach	Kota/ Urban	Pede- saan/ Rural	< 500	500 - 1000	> 1000	Swa daya	Swa karya	Swa sembada
(1)	(2)	(3)	(4)	(5)	(6)	(7)	(8)	(9)	(10)	(11)
001 Singakerta	-	1	1	-	1	-	-	-	-	1
002 Lodtunduh	-	1	1	-	1	-	-	-	-	1
003 Mas	-	1	1	-	1	-	-	-	-	1
004 Peliatan	-	1	1	-	1	-	-	-	-	1
005 Petulu	-	1	1	-	1	-	-	-	-	1
006 Ubud	-	1	1	-	1	-	-	-	-	1
007 Sayan	-	1	1	-	1	-	-	-	-	1
008 Kedewatan	-	1	1	-	-	1	-	-	-	1
Jumlah/Total 2017	-	8	8	-	7	1	-	-	-	8
2016	-	8	7	1	7	1	-	-	-	8
2015	-	8	7	1	7	1	-	-	-	8
2014	-	8	7	1	7	1	-	-	-	8
2013	-	8	7	1	7	1	-	-	-	8

Sumber : Kantor Perbekel/Kelurahan
 Source : Village Office

Tabel 1.2: Luas Wilayah Penggunaan Tanah Menurut Desa/
Table 1.2: According to Area The Land Utilization Situation End by
 Village in Ubud Subdistrict, 2017 (Ha)

Desa/Villages	Luas (Ha)/ Large	Lahan Pertanian/ Agricultural Land		Lahan Bukan Pertanian/Non agricultural land
		Sawah/ Paddy field	Lahan Pertanian Bukan Sawah/ Non paddy field	
(1)	(2)	(3)	(4)	(5)
001 Singakerta	6,75	365,00	174,03	135,97
002 Lodtunduh	6,27	253,00	277,11	96,89
003 Mas	4,65	198,00	81,19	185,81
004 Peliatan	4,93	238,00	102,76	152,24
005 Petulu	2,33	67,00	87,07	78,93
006 Ubud	7,32	314,00	153,34	264,66
007 Sayan	5,78	198,00	170,38	209,62
008 Kedewatan	4,35	155,00	90,12	189,88
Jumlah/Total	2017 42,38	1.788,00	1 136,00	1 314,00
	2016 42,38	1.796,00	1 136,00	1 306,00
	2015 42,38	1 840,00	1 130,00	1 268,00
	2014 42,38	1 866,00	1 130,00	1 242,00
	2013 42,38	1 891,00	1 127,00	1 220,00

Sumber : Survei Pertanian Lahan 2017
 Source : Survei of Agricultural Land 2017

Tabel 1.3: Luas Lahan Sawah dan Jenis Pengairan Menurut Desa/ Kelurahan di Kecamatan Ubud, 2017 (Ha)
Table 1.3: Area of Rice By Villages and Irrigation by Village in Ubud Subdistrict, 2017 (Ha)

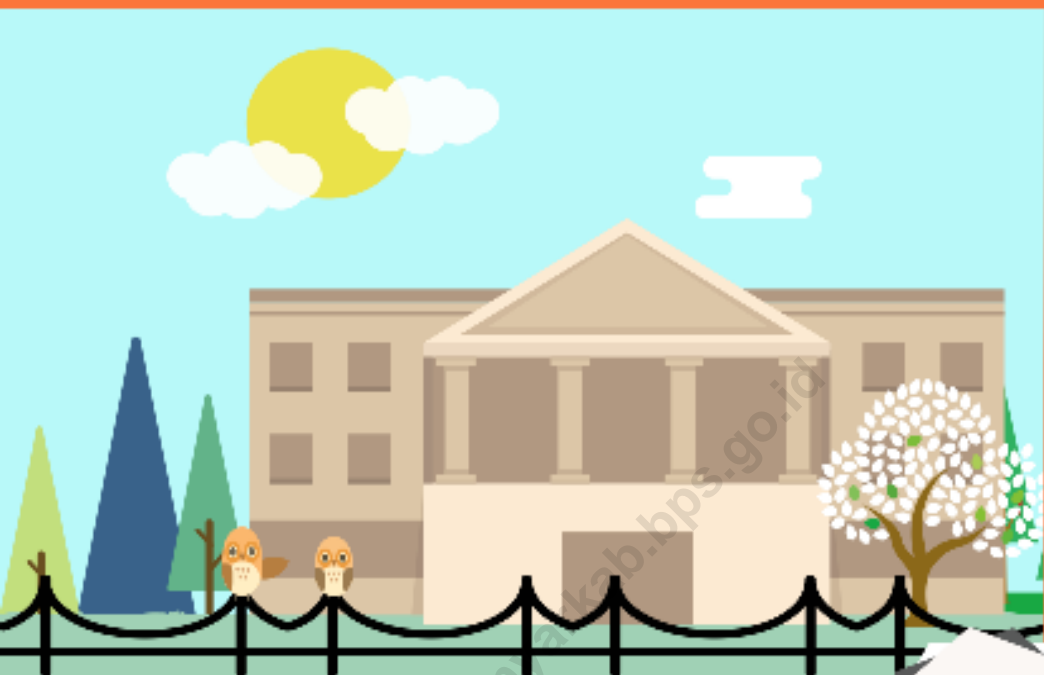
Desa/Villages	Jenis Irigasi/Irrigation				
	Lahan Sawah/Paddy field	Irigasi/Irrigation	Tadah Hujan/Rainfed	Rawa Pasang Surut/The tidal irrigation	Rawa Lebak
(1)	(2)	(3)	(4)	(5)	(6)
001 Singakerta	365,00	365,00	-	-	-
002 Lodtunduh	253,00	253,00	-	-	-
003 Mas	198,00	198,00	-	-	-
004 Peliatan	238,00	238,00	-	-	-
005 Petulu	67,00	67,00	-	-	-
006 Ubud	314,00	314,00	-	-	-
007 Sayan	198,00	198,00	-	-	-
008 Kedewatan	155,00	155,00	-	-	-
Jumlah/Total	2017 1 788	1 788	-	-	-
	2016 1 796	1 796	-	-	-
	2015 1 840	1 866	-	-	-
	2014 1 866	1 866	-	-	-
	2013 1 891	1 891	-	-	-

Sumber : Survei Pertanian Lahan 2017
 Source : Survei of Agricultural Land 2017

Tabel 1.4: **Luas Lahan Pertanian Bukan Sawah Menurut Desa/ Kelurahan di Kecamatan Ubud, 2017 (Ha)**
Table 1.4: **Area of Agricultural Not Rice, Detailed By Utilization by Village in Ubud Subdistrict, 2017(Ha)**

Desa/Villages	Pergunaan Tanah (Ha)/Utilization of land (Ha)							
	Lahan Pertanian Bukan Sawah/ Non paddy field	Tegal/ Kebun/ Dry field	Ladang/ Huma/ Dry field	Perkebunan/ Plantations	Hutan Rakyat/ People forest	Padang Rumput/ Grassland	Sementara Tidak Diusahakan/ Not in use	Lainnya/ Others
(1)	(2)	(3)	(4)	(5)	(6)	(7)	(8)	(9)
001 Singakerta	174,03	171,53	-	2,50	-	-	-	-
002 Lodtunduh	277,11	271,81	-	2,30	3,00	-	-	-
003 Mas	81,19	81,19	-	-	-	-	-	-
004 Peliatan	102,76	102,76	-	-	-	-	-	-
005 Petulu	87,07	87,07	-	-	-	-	-	-
006 Ubud	153,34	148,34	-	-	5,00	-	-	-
007 Sayan	170,38	169,18	-	1,20	-	-	-	-
008 Kedewatan	90,12	87,12	-	1,00	2,00	-	-	-
Jumlah/Total								
2017	1 136,00	1 119,00	-	7,00	10,00	-	-	-
2016	1 136,00	1 119,00	-	7,00	10,00	-	-	-
2015	1 130,00	1 113,00	-	7,00	10,00	-	-	-
2014	1 130,00	1 113,00	-	7,00	10,00	-	-	-
2013	1 127,00	1 110,00	-	7,00	10,00	-	-	-

Sumber : Survei Pertanian Lahan 2017
 Source : Survei of Agricultural Land 2017



PEMERINTAHAN
GOVERNMENT



Tabel 2.1: **Banyaknya Desa Adat, Banjar dan Pamong Desa Menurut Desa/Kelurahan di Kecamatan Ubud, 2017**
Number of Desa Adat, Banjar and Civil Detailed by Village in Ubud Subdistrict, 2017

Desa/Villages		Desa Adat	Banjar	Pamong Desa
(1)		(2)	(3)	(4)
001	Singakerta	5	14	-
002	Lodtunduh	4	11	-
003	Mas	4	12	-
004	Peliatan	2	10	-
005	Petulu	4	6	-
006	Ubud	6	13	-
007	Sayan	2	8	-
008	Kedewatan	5	6	-
Jumlah/Total				
	2017	32	80	-
	2016	32	80	-
	2015	32	80	-
	2014	32	80	-
	2013	32	80	-

Sumber : Kantor Perbekel/Kelurahan
 Source : Village Office

Tabel 2.2: Banyaknya Aparat Pemerintahan Menurut Desa/Kelurahan di Kecamatan Ubud, 2017
The number of Village Government officials by Village in Ubud Subdistrict, 2017

Desa/Villages	Kepala Desa/Lurah/Head of Villages	Kepala Dusun/Banjar/Head of Banjar	Sekretaris Desa/Village Secretary	Kaur Pemerintahan/Head of government affairs	Kaur Pambangunan/Head of the Development	Administrasi lainnya/Other administrative	Lainnya/Other
(1)	(2)	(3)	(4)	(5)	(6)	(7)	(8)
001 Singakerta	1	14	1	1	1	5	1
002 Lodunduh	1	11	1	1	1	5	1
003 Mas	1	12	1	1	1	5	1
004 Peliatan	1	10	1	1	1	5	1
005 Petulu	1	6	1	1	1	5	1
006 Ubud	1	13	-	1	1	3	1
007 Sayan	1	8	1	1	1	5	1
008 Kedewatan	1	6	1	1	1	5	1
Jumlah/Total							
2017	8	80	7	8	8	38	8
2016	8	80	7	8	8	17	11
2015	8	80	7	8	8	17	11
2014	8	80	7	8	8	17	11
2013	8	80	7	8	8	16	10

Sumber : Kantor Perbekel/Kelurahan
 Source : Village Office

Tabel 2.3: **Jarak Desa/Kelurahan ke Ibu Kota Kecamatan, 2017**
Table *Distance to Village Capital District State by Village in Ubud Subdistrict, 2017*

Desa/Villages	Jarak Desa ke Ibu Kota Kecamatan (Km)/Village distance to the district capital								
	< 1	1-2	3-4	5-6	7-8	9-10	10-15	15-20	>20
(1)	(2)	(3)	(4)	(5)	(6)	(7)	(8)	(9)	(10)
001 Singakerta	-	-	-	5	-	-	-	-	-
002 Lodtunduh	-	-	-	6	-	-	-	-	-
003 Mas	-	-	4	-	-	-	-	-	-
004 Peliatan	-	1,5	-	-	-	-	-	-	-
005 Petulu	-	-	4	-	-	-	-	-	-
006 Ubud	0,1	-	-	-	-	-	-	-	-
007 Sayan	-	-	4	-	-	-	-	-	-
008 Kedewatan	-	-	-	6	-	-	-	-	-
Jumlah/Total									
2017	0,1	1,5	12	17	-	-	-	-	-
2016	0,1	1,5	12	17	-	-	-	-	-
2015	0,1	1,5	12	17	-	-	-	-	-
2014	0,1	1,5	12	17	-	-	-	-	-
2013	0,1	1,5	12	17	-	-	-	-	-

Sumber : Kantor Perbekel/Kelurahan
 Source : Village Office

Tabel 2.4: Banyaknya Pos Keamanan dan Jumlah Personil Menurut Desa/Kelurahan di Kecamatan Ubud, 2017
Post Number and Number of Personnel Saefity Detailed by Village in Ubud Subdistrict, 2017

Desa/Villages	Pos Keamanan/Security post				
	Hansip/Linmas/Civil Defense		Bimas/Babinsa		
	Jumlah/ Total	Personil/ per- sonnel	Jumlah/ Total	Personil/ per- sonnel	
(1)	(2)	(3)	(4)	(5)	
001 Singakerta	1	31	1	2	
002 Lodtunduh	1	31	1	2	
003 Mas	1	31	1	2	
004 Peliatan	1	35	1	2	
005 Petulu	1	31	1	2	
006 Ubud	1	31	1	2	
007 Sayan	1	31	1	2	
008 Kedewatan	1	33	1	2	
Jumlah/Total	2017	8	254	8	16
	2016	8	246	8	16
	2015	8	246	8	16
	2014	8	246	8	16
	2013	8	246	8	16

Sumber : Kantor Perbekel/Kelurahan
 Source : Village Office

Tabel 2.5: Jumlah Hansip yang Ditatar, Pembinaan dan Bantuan Pakaian Menurut Desa/Kelurahan di Kecamatan Ubud 2017
The Civil Defense total Training, Guidance and Assistance in Clothing by Village in Ubud Subdistrict, 2017

Desa/Villages	Jumlah Hansip/ Number of Civi Defense	Hansip Telah Ditatar/Civil Defense has been upbraided	Jumlah Pembinaan/ number of Coaching	Jumlah Bantuan Pakaian (Buah)/ Number Help Clothes
(1)	(2)	(3)	(4)	(5)
001 Singakerta	31	31	2	31
002 Lodtunduh	31	31	2	31
003 Mas	31	31	2	31
004 Peliatan	35	35	2	35
005 Petulu	31	31	2	31
006 Ubud	31	31	2	31
007 Sayan	31	31	2	31
008 Kedewatan	31	31	2	31
Jumlah/Total	2017 252	252	16	252
	2016 246	246	16	246
	2015 246	246	16	246
	2014 245	245	16	245
	2013 245	245	16	245

Sumber : Kantor Perbekel/Kelurahan
 Source : Village Office



PENDUDUK & KETENAGAKERJAAN
POPULATION & EMPLOYMENT

3



Tabel 3.1: **Luas Tanah, Jumlah Penduduk dan Kepadatan Penduduk Menurut Kecamatan di Kabupaten Gianyar, 2017** *Land Area, Total Population and Population Density Detailed by Subdistrict of Gianyar Regency, 2017*

Kecamatan/ Subdistrik	Luas (Km2)/ Large (km2)	Jumlah Penduduk/ Number of Population	Kepadatan Penduduk (Km2)/Population Density
(1)	(2)	(3)	(4)
001 Sukawati	55,02	122 430	2 225
002 Blahbatuh	39,70	70 900	1 786
003 Gianyar	50,59	93 070	1 840
004 Tampaksiring	42,63	48 180	1 130
005 Ubud	42,38	73 350	1 731
006 Tegallalang	61,80	53 110	859
007 Payangan	75,88	42 860	565
Jumlah/Total	2017 368,00	503 900	1 369
	2016 368,00	499 600	1 358
	2015 368,00	495 100	1 345
	2014 368,00	490 500	1 333
	2013 368,00	486 000	1 321

Sumber : *Proyeksi Penduduk 2014*
 Source : *Population Projection 2014*

Tabel 3.2: **Penduduk Menurut Jenis Kelamin dan Sex Ratio Per Kecamatan di Kabupaten Gianyar, 2017**
Mid Year Population According to gender and Sex Ratio by Subdistrict of Gianyar Regerency, 2017

Kecamatan/ Subdistrik	Jenis Kelamin/Sex		Jumlah/Total	Sex Ratio (%)
	Laki-Laki/ Male	Perempuan/ Females		
(1)	(2)	(3)	(4)	(5)
001 Sukawati	62 000	60 430	122 430	102,60
002 Blahbatuh	35 750	35 150	70 900	101,71
003 Gianyar	46 990	46 080	93 070	101,97
004 Tampaksiring	24 490	23 690	48 180	103,38
005 Ubud	37 030	36 320	73 350	101,95
006 Tegallalang	26 690	26 420	53 110	101,02
007 Payangan	21 450	21 410	42 860	100,19
Jumlah/Total 2017	254 400	249 500	503 900	101,96
2016	252 200	247 400	499 600	101,94
2015	249 900	245 200	495 100	101,92
2014	247 500	243 000	490 500	101,85
2013	245 400	240 600	486 000	102,00

Sumber : Proyeksi Penduduk 2014

Source : Population Projection 2014

Tabel 3.3: Penduduk Menurut Kelompok Umur dan Jenis Kelamin Per Desa/Kelurahan di Kecamatan Ubud, 2017
Population by Age Group and Gender Detailed Situation by Village in Ubud Subdistrict, 2017

Kecamatan/ Subdistrik	Kelompok Umur (Tahun)/Age group (year)							
	0 - 4		5 - 9		10 - 14		15 - 19	
	Lk-Lk/ Male	Prp/ Female	Lk-Lk/ Male	Prp/ Female	Lk-Lk/ Male	Prp/ Female	Lk-Lk/ Male	Prp/ Female
(1)	(2)	(3)	(4)	(5)	(6)	(7)	(8)	(9)
001 Sukawati	4 710	4 510	5 250	4 840	5 200	4 880	4 960	4 730
002 Blahbatuh	2 740	2 700	2 810	2 770	2 780	2 740	2 610	2 380
003 Gianyar	3 370	3 230	3 550	3 410	3 780	3 520	3 670	3 410
004 Tampaksiring	1 780	1 710	2 000	1 830	2 140	1 930	1 930	1 680
005 Ubud	2 570	2 490	2 920	2 730	3 050	2 930	2 960	2 810
006 Tegallalang	1 880	1 810	2 000	2 010	2 360	2 140	2 030	1 920
007 Payangan	1 350	1 250	1 470	1 410	1 790	1 660	1 540	1 470
Jumlah/Total 2017	18 400	17 700	20 000	19 000	21 100	19 800	19 700	18 400
2016	18 400	17 800	20 400	19 300	21 000	19 700	19 300	18 100
2015	18 600	17 900	20 800	19 600	20 800	19 500	19 000	17 900
2014	18 900	18 000	21 000	19 900	20 400	19 200	18 800	17 900
2013	19 200	18 200	21 100	20 000	19 900	18 800	18 900	18 000

Sumber : Proyeksi Penduduk 2014
 Source : Population Projection 2014

Tabel 3.3: **Lanjutan 1**
Table 3.3: **Continued 1**

Kecamatan/ Subdistrik	Kelompok Umur (Tahun)/Age group (year)							
	20 - 24		25 - 29		30 - 34		35 - 39	
	Lk-Lk/ Male	Prp/ Female	Lk-Lk/ Male	Prp/ Female	Lk-Lk/ Male	Prp/ Female	Lk-Lk/ Male	Prp/ Female
(1)	(10)	(11)	(12)	(13)	(14)	(15)	(16)	(17)
001 Sukawati	4 570	4 380	4 800	4 610	5 040	4 990	5 350	5 320
002 Blahbatuh	2 430	2 310	2 740	2 700	3 060	2 730	2 880	2 800
003 Gianyar	3 280	3 110	3 690	3 340	3 490	3 300	3 670	3 650
004 Tampaksiring	1 590	1 440	1 840	1 710	1 890	1 850	1 890	1 830
005 Ubud	2 400	2 390	2 650	2 540	2 750	2 800	3 130	3 190
006 Tegallalang	1 840	1 680	2 000	1 860	2 090	2 080	2 010	1 980
007 Payangan	1 290	1 190	1 280	1 240	1 380	1 450	1 670	1 630
Jumlah/Total	2017 17 400	16 500	19 000	18 000	19 700	19 200	20 600	20 400
	2016 17 500	16 700	18 900	17 900	19 600	19 300	20 800	20 600
	2015 17 700	16 900	18 800	17 600	19 500	19 500	21 000	20 800
	2014 17 900	17 000	18 600	17 400	19 500	19 800	21 200	20 900
	2013 18 000	17 000	18 400	17 300	19 700	19 900	21 400	21 000

Tabel 3.3: **Lanjutan 2**
Table *Continued 2*

Kecamatan/ Subdistrik	Kelompok Umur (Tahun)/Age group (year)							
	40 - 44		45 - 49		50 - 54		55 - 59	
	Lk-Lk/ Male	Prp/ Female	Lk-Lk/ Male	Prp/ Female	Lk-Lk/ Male	Prp/ Female	Lk-Lk/ Male	Prp/ Female
(1)	(18)	(19)	(20)	(21)	(22)	(23)	(24)	(25)
001 Sukawati	5 260	5 010	4 780	4 520	3 510	3 410	2 690	2 730
002 Blahbatuh	2 820	2 710	2 560	2 540	2 240	2 450	1 780	1 740
003 Gianyar	3 600	3 680	3 690	3 580	3 160	3 210	2 570	2 650
004 Tampaksiring	1 820	1 700	1 640	1 740	1 560	1 600	1 250	1 260
005 Ubud	3 120	3 060	2 900	2 620	2 350	2 400	1 900	1 990
006 Tegallalang	1 860	1 830	1 880	1 940	1 810	1 850	1 470	1 500
007 Payangan	1 720	1 710	1 750	1 660	1 570	1 780	1 340	1 430
Jumlah/Total	20 170	20 190	20 180	20 160	20 160	20 170	13 000	13 300
	20 300	19 800	18 900	18 400	15 400	15 900	12 600	12 800
	20 300	19 800	18 600	18 100	15 400	15 100	12 100	12 300
	20 300	19 700	18 200	17 700	14 600	14 300	11 600	11 800
	20 200	19 600	17 700	17 200	13 900	13 700	11 200	11 400

Tabel 3.3: **Lanjutan 3**
Table 3.3: **Continued 3**

Kecamatan/ Subdistrik	Kelompok Umur (Tahun)/Age group (year)					
	60 - 64		65 - 69		70+	
	Laki- Laki/ Male	Perempuan/ Female	Laki- Laki/ Male	Perempuan/ Female	Laki-Laki/ Male	Perempuan/ Female
(1)	(26)	(27)	(28)	(29)	(30)	(31)
001 Sukawati	2 010	2 140	1 530	1 640	2340	2720
002 Blahbatuh	1 430	1 500	1 140	1 140	1730	1940
003 Gianyar	1 890	1 950	1 420	1 590	2160	2450
004 Tampaksiring	1 100	1 220	920	920	1140	1270
005 Ubud	1 590	1 470	1 150	1 180	1590	1720
006 Tegallalang	1 190	1 280	930	1 000	1340	1540
007 Payangan	1 190	1 240	910	930	1200	1360
Jumlah/Total	2017 10 400	10 800	8 000	8 400	11 500	13 000
	2016 10 000	10 400	7 800	8 200	11 200	12 500
	2015 10 000	10 200	7 600	8 000	10 800	12 200
	2014 9 700	9 600	7 300	7 800	10 600	12 000
	2013 9 300	9 300	7 100	7 600	10 400	11 600

Sumber : Proyeksi Penduduk 2014
 Source : Population Projection 2014

Tabel 3.4: **Jumlah Kelahiran dan Kematian Menurut Jenis Kelamin per Desa/Kelurahan di Kecamatan Ubud, 2017**
Number of Births and Deaths According to Sex of by Village in Ubud Subdistrict, 2017

Desa/Villages	Kematian/Decease		Kelahiran/Birth		
	Laki-Laki/Male	Perempuan/ Female	Laki-Laki/Male	Perempuan/ Female	
(1)	(2)	(3)	(4)	(5)	
001 Singakerta	4	4	41	39	
002 Lodtunduh	2	2	18	16	
003 Mas	2	1	13	12	
004 Peliatan	2	3	39	39	
005 Petulu	2	2	13	18	
006 Ubud	4	3	39	25	
007 Sayan	2	4	30	41	
008 Kedewatan	1	2	9	11	
Jumlah/Total					
	2017	19	21	202	201
	2016	37	28	168	167
	2015	152	155	228	227
	2014	191	190	238	223
	2013	184	169	229	209

Sumber : Kantor Camat Ubud
 Source : Subdistrik of Ubud Office

Tabel 3.5: **Jumlah Penduduk Datang dan Pergi Menurut Jenis Kelamin per Desa/Kelurahan di Kecamatan Ubud ,2017**
Population Come and Go According to Geder of by Village in Ubud Subdistrict, 2017

Desa/Villages	Datang/Come on		Pergi/Leave	
	Laki-Laki/Male	Perempuan/ Female	Laki-Laki/Male	Perempuan/ Female
(1)	(2)	(3)	(4)	(5)
001 Singakerta	54	43	1	1
002 Lodtunduh	13	9	4	1
003 Mas	12	7	-	1
004 Peliatan	56	51	-	-
005 Petulu	24	16	2	-
006 Ubud	54	38	14	10
007 Sayan	49	55	2	8
008 Kedewatan	10	10	-	-
Jumlah/Total				
2017	272	229	23	21
2016	275	206	36	33
2015	342	283	52	43
2014	216	308	75	34
2013	167	155	90	27

Sumber : Kantor Camat Ubud
 Source : Subdistrik of Ubud Office



SOSIAL
SOCIAL

4



Tabel 4.1.1: **Banyaknya Sekolah Menurut Jenjang Pendidikan Dirinci per Desa/Kelurahan di Kecamatan Ubud, 2017**
Number of Schools by Level of Education by Village in Ubud Subdistrict, 2017

Desa/ Village	Jenjang Pendidikan/ Level of Education						
	TK/ Kinder- garten	SD/ Primary School	SLTP/ Junior High School	SMU/ Senior High School	SMK/ Vocational Senior High School	Akademi/ PT/ Academy/ University	
(1)	(2)	(3)	(4)	(5)	(6)	(7)	
001 Singakerta	3	6	2	-	1	-	
002 Lodtunduh	4	7	2	-	-	-	
003 Mas	6	10	1	-	2	-	
004 Peliatan	2	4	1	1	1	-	
005 Petulu	3	4	-	-	-	-	
006 Ubud	4	5	2	1	1	-	
007 Sayan	3	5	-	-	1	-	
008 Kedewatan	4	5	-	-	-	-	
Jumlah/Total :	2017	29	46	8	2	6	-
	2016	26	46	8	2	7	-
	2015	25	46	8	2	7	-
	2014	21	46	8	3	7	-
	2013	21	46	8	3	7	-

Sumber : Disdikpora Kabupaten Gianyar
 Source : Education service of Gianyar Regency

Tabel
Table 4.1.2:

Banyaknya Guru Menurut Jenjang Pendidikan Tempat Mengajar Dirinci per Desa/Kelurahan di Kecamatan Ubud, 2017

Number of Teachers by Level of Education by Village in Ubud Subdistrict, 2017

Desa/ Village	Jenjang Pendidikan/ Level of Education					
	TK/ Kinder- garten	SD/ Primary School	SLTP/ Junior High School	SMU/ Senior High School	SMK/ Vocational Senior High School	Akademi/ PT/ Academy/ University
(1)	(2)	(3)	(4)	(5)	(6)	(7)
001 Singakerta	12	73	81	-	74	-
002 Lodunduh	10	61	66	21	-	-
003 Mas	51	86	29	-	115	-
004 Peliatan	19	36	46	18	42	-
005 Petulu	13	53	-	-	-	-
006 Ubud	25	65	71	82	37	-
007 Sayan	11	42	-	-	69	-
008 Kedewatan	9	42	-	-	-	-
Jumlah/Total : 2017	150	458	293	121	337	-
2016	119	553	293	110	371	-
2015	118	483	416	85	322	-
2014	138	493	316	144	369	-
2013	117	478	280	125	375	-

Sumber : Disdikpora Kabupaten Gianyar
Source : Education service of Gianyar Regency

Tabel 4.1.3: Banyaknya Murid Menurut Jenjang Pendidikan Dirinci per Desa/Kelurahan di Kecamatan Ubud, 2017

Number of Students by Level of Education by Village in Ubud Subdistrict, 2017

Desa/ Village	Jenjang Pendidikan/ Level of Education						
	Taman Kanak-Kanak/ Kindergarten			SD/ Primary School			
	Laki-laki/ Male	Perempuan/ Female	Jumlah/ Total	Laki-laki/ Male	Perempuan/ Female	Jumlah/ Total	
(1)	(2)	(3)	(4)	(5)	(6)	(7)	
001 Singakerta	54	52	106	455	403	858	
002 Lodtunduh	42	48	90	443	419	862	
003 Mas	245	215	460	728	637	1 365	
004 Peliatan	93	98	191	402	393	795	
005 Petulu	87	67	154	352	389	741	
006 Ubud	155	167	322	726	620	1 346	
007 Sayan	78	75	153	332	324	656	
008 Kedewatan	65	36	101	296	253	549	
Jumlah/Total :	2017	819	758	1 577	3 734	3 438	7 172
	2016	738	792	1 528	3 879	3 524	7 403
	2014	734	723	1 457	3 864	3 480	7 344
	2014	628	670	1 298	3 888	3 614	7 502
	2013	725	685	1 410	3 972	3 594	7 566

Sumber : Disdikpora Kabupaten Gianyar
Source : Education service of Gianyar Regency

Tabel 4.1.3: **Lanjutan 1**
Table 4.1.3: **Continued 1**

		Jenjang Pendidikan/ Level of Education				
Desa/ Village	SLTP/ Junior High School			SMU/ Senior High School		
	Laki- laki/ Male	Perem- puan/ Female	Jumlah/ Total	Laki- laki/ Male	Perem- puan/ Female	Jumlah/ Total
(1)	(8)	(9)	(10)	(11)	(12)	(13)
001 Singakerta	615	611	1.226	-	-	-
002 Lodtunduh	541	424	965	-	-	-
003 Mas	202	178	380	-	-	-
004 Peliatan	488	437	925	36	15	51
005 Petulu	-	-	-	-	-	-
006 Ubud	510	605	1.115	577	580	1.157
007 Sayan	-	-	-	-	-	-
008 Kedewatan	-	-	-	-	-	-
Jumlah/Total :						
2017	2 356	2 255	4 611	613	595	1 208
2016	2 038	1 974	4 012	637	539	1 176
2015	2 080	1 938	4 019	646	500	1 146
2014	2 083	1 862	3 945	601	504	1 105
2013	2 109	1 799	3 908	509	510	1 019

Tabel Lanjutan 2
 4.1.3: *Continued 2*
Table

Desa/ Village	Jenjang Pendidikan/ Level of Education					
	SMK/ Vocational Senior High School			Perguruan Tinggi/ Academy/University		
	Laki- laki/ Male	Perem- puan/ Female	Jumlah/ Total	Laki- laki/ Male	Perem- puan/ Female	Jumlah/ Total
(1)	(14)	(15)	(16)	(17)	(18)	(19)
001 Singakerta	634	568	1202	-	-	-
002 Lodtunduh	-	-	-	-	-	-
003 Mas	751	857	1608	-	-	-
004 Peliatan	255	182	437	-	-	-
005 Petulu	-	-	-	-	-	-
006 Ubud	337	214	551	-	-	-
007 Sayan	456	628	1084	-	-	-
008 Kedewatan	-	-	-	-	-	-
Jumlah/Total :	2017	2 433	2 449	4 882	-	-
	2016	2 289	1 944	4 233	-	-
	2015	2 263	2 114	4 377	-	-
	2014	2 204	2 079	4 283	-	-
	2013	1 743	2 076	3 819	-	-

Sumber : Disdikpora Kabupaten Gianyar
 Source : Education servive of Gianyar Regency

Tabel
4.1.4:
Table

Ratio Murid dan Guru Menurut Jenjang Pendidikan di Rinci per Desa/Kelurahan di Kecamatan Ubud, 2017
Student and Teacher Ratio by Level of Education by Village in Ubud Subdistrict, 2017

Desa/ Village	Jenjang Pendidikan/ Level of Education						
	TK/ Kinder- garten	SD/ Primary School	SLTP/ Junior High School	SMU/ Senior High School	SMK/ Vocational Senior High School	Akademi/ PT/ Academy/ University	
(1)	(2)	(3)	(4)	(5)	(6)	(7)	
001 Singakerta	9	12	15	-	19	-	
002 Lodtunduh	9	14	12	1	-	-	
003 Mas	9	16	14	-	15	-	
004 Peliatan	10	22	8	2	13	-	
005 Petulu	12	14	-	-	-	-	
006 Ubud	13	21	16	13	13	-	
007 Sayan	14	16	-	-	16	-	
008 Kedewatan	11	13	-	-	-	-	
Jumlah/Total :	2017	87	127	64	16	77	-
	2016	100	122	48	21	70	-
	2015	82	130	63	17	63	-
	2014	96	128	70	20	61	-
	2013	88	121	69	20	52	-

Sumber : Disdikpora Kabupaten Gianyar
Source : Education Service of Gianyar Regency

Tabel 4.1.5: Banyaknya Organisasi Sosial Desa Menurut Jenisnya Dirinci per Desa/Kelurahan di Kecamatan Ubud, 2017
Total Village Social Organizations by Kind per Village by Village in Ubud Subdistrict, 2017

	Desa/ Village	Karang Taruna/ Youth Clubs	Panti Asuhan/ Orphanage	Organisasi Pengairan/ Irrigation Organization	
				Jumlah/ Total	Anggota/ Members
	(1)	(2)	(4)	(5)	(6)
001	Singakerta	1	-	15	968
002	Lodtunduh	1	-	13	727
003	Mas	1	-	10	604
004	Peliatan	1	-	14	596
005	Petulu	1	-	3	240
006	Ubud	1	-	20	1 059
007	Sayan	1	-	9	746
008	Kedewatan	1	-	6	549
	2017	8	-	90	5 489
	2016	8	-	90	5 489
	2015	8	-	90	5 489
	2014	8	-	91	5 541
	2013	8	-	91	5 544

Sumber : Kantor Perbekel/Kelurahan
 Source : Village Office

Tabel 4.1.6: Banyaknya Organisasi Kesenian Dirinci Menurut Jenisnya per Desa/Kelurahan di Kecamatan Ubud Tahun 2017
Table *Number of Art Organizations by Kind in by Village in Ubud Subdistrict, 2017*

	Desa/ Village	Kesenian/ Arts			
		Sanggar/ Barong	Gong Kebyar	Topeng	Lainnya/ Pesantian
	(1)	(2)	(3)	(4)	(5)
001	Singakerta	1	14	2	4
002	Lodtunduh	1	10	1	3
003	Mas	1	14	7	6
004	Peliatan	2	10	6	6
005	Petulu	1	12	3	4
006	Ubud	2	14	6	7
007	Sayan	1	8	4	5
008	Kedewatan	1	6	3	6
Jumlah/Total :	2017	10	88	32	41
	2016	10	88	32	41
	2015	7	88	32	43
	2014	7	81	34	43
	2013	7	81	34	43

Sumber : Kantor Perbekel/Kelurahan
 Source : Village Office

Tabel 4.1.7: **Banyaknya Lapangan olahraga Dirinci Menurut Jenisnya per Desa/Kelurahan di Kecamatan Ubud, 2017**
Number of Sports Field by Kind by Village in Ubud Subdistrict, 2017

Desa/ Village	Jenis Olahraga/ Kind of Sports					
	Sepak Bola/ Football	Bola Volly/ Volleyball	Tenis Meja/ Table Tennis	Bulu Tangkis/ Badminton	Lainnya/ Others	
(1)	(2)	(3)	(4)	(5)	(6)	
001 Singakerta	-	4	5	1	-	
002 Lodtunduh	-	3	4	2	-	
003 Mas	1	5	5	3	1	
004 Peliatan	-	3	4	1	-	
005 Petulu	1	3	4	1	-	
006 Ubud	-	-	6	2	-	
007 Sayan	-	4	5	2	-	
008 Kedewatan	-	2	4	2	2	
Jumlah/Total :	2017	2	24	37	14	3
	2016	2	25	37	14	3
	2015	2	25	38	15	3
	2014	2	34	38	13	3
	2013	3	52	56	14	5

Sumber : Kantor Perbekel/Kelurahan
 Source : Village Office

Tabel 4.2.1: Banyaknya Fasilitas dan Sarana Kesehatan Dirinci Menurut Jenisnya per Desa/Kelurahan di Kecamatan Ubud, 2017
Number of Health Facilities by Kind by Village in Ubud Subdistrict, 2017

	Desa/ Village	Pos- yandu/ Integrated Service Post	Puskes- mas/ Public Health Centre	Puskes- mas Pem- bantu/ Subsidiary Public Health Centre	Rumah Sakit/ Hospital	Klinik Clinic	Pos KB/ Family Planning Program Post
	(1)	(2)	(3)	(4)	(5)	(6)	(7)
001	Singakerta	14	-	1	-	-	1
002	Lodtunduh	11	-	1	-	-	1
003	Mas	12	-	1	1	1	1
004	Peliatan	10	-	2	-	-	1
005	Petulu	6	-	2	-	-	1
006	Ubud	13	1	-	-	-	1
007	Sayan	8	1	-	-	-	1
008	Kedewatan	6	-	1	-	-	1
Jumlah/ Total :	2017	80	2	8	1	1	8
	2016	80	2	8	1	1	8
	2015	80	2	8	1	1	8
	2014	80	2	8	1	1	8
	2013	80	2	8	1	1	8

Sumber : Puskesmas Ubud
 Source : Local Clinic of Ubud District

Tabel 4.2.2: Banyaknya Tenaga Kesehatan dan Jenisnya Menurut Unit Kesehatan per Kecamatan di Kabupaten Gianyar 2017
Number of Health Workers and Cained by Unit Subdistrict, of Gianyar Regerency, 2017

Tenaga Medis <i>Medical personnel</i>	Rumah Sakit <i>Hospital</i>	Puskesmas							Jumlah/ <i>Total</i>
		Gianyar + Petak	Keramas + Blahbatuh	Suka-wati + Singapadu	Ubud + Kedewatan	Payan	Tegalalang + Sebatu	Tampak siring + Pejeng	
(1)	(2)	(3)	(4)	(5)	(6)	(7)	(8)	(9)	(10)
I. Dokter/Doctor									
1. Spesialis	210	-	-	-	-	-	-	-	210
2. Umum	87	9	7	9	8	10	9	8	68
3. Gigi	11	6	6	12	9	4	4	7	59
II. Perawat/Nurse									
1. Umum/ <i>General</i>	522	28	22	17	26	18	26	38	697
2. Gigi/ <i>Dental</i>	7	5	5	8	8	-	5	2	40
3. Bidan/ <i>Midfery</i>	216	47	28	46	43	31	34	40	485
III. Nakes									
1. Apoteker <i>pharmacist</i>	10	-	-	2	1	1	1	1	16
2. Asisten Apoteker	45	3	3	3	2	1	2	1	60
3. Lainnya/ <i>SMF</i>	-	-	-	-	-	-	-	-	-
Jumlah/Total : 2017	1 108	98	71	97	97	65	81	97	1 635
2016	956	39	26	49	30	55	52	54	1 261

Sumber : Dinas Kesehatan Kabupaten Gianyar.

Source : *Regional Office of Health of Gianyar Regency*

Tabel 4.2.3: Banyaknya Aseptor KB Dirinci Menurut Alat Kontrasepsi yang Digunakan per Desa/Kelurahan di Kecamatan Ubud, 2017

Number of Family Planning Acceptors by Type of Contraceptive by Village in Ubud Subdistrict, 2017

Desa/ Village	IUD/ IUD	Pil KB/ Tablet	Kondom/ Condom	Obat Vagina/ Vaginal Medicine	MOW/ Vasec- tomy	MOP/ Tubec- tomy	Suntik/ Injection	Implan/ Implant
(1)	(2)	(3)	(4)	(5)	(6)	(7)	(8)	(9)
001 Singakerta	883	216	17	-	39	1	338	8
002 Lodtunduh	234	232	49	-	57	1	435	5
003 Mas	772	284	21	-	86	1	370	8
004 Peliatan	581	124	96	-	43	8	160	12
005 Petulu	191	144	11	-	24	-	202	9
006 Ubud	1.031	157	50	-	58	-	244	8
007 Sayan	174	195	12	-	28	1	252	20
008 Kedewatan	406	209	31	-	31	1	194	;-
Jumlah/ Total :								
2017	4 272	1 561	287	-	366	13	2 195	70
2016	4 668	1 528	211	-	331	3	2 218	64
2015	4 459	1 754	229	-	421	2	2 345	85
2014	6 777	848	125	-	370	13	1 964	62
2013	6 669	892	118	-	346	13	1 959	55

Sumber : Kantor PP dan KB Kabupaten Gianyar
Source : Women Empowerment and Famili Planing Office

Tabel 4.2.4: Jumlah Panti Asuhan dan Penderita Cacat Dirinci Menurut Jenisnya per Desa/Kelurahan di Kecamatan Ubud, 2017
Number of Orphanage And Disabilities by Village in Ubud Subdistrict, 2017

Desa/ Village	Jumlah Panti Asuhan/ Number of Orphanage	Penderita Cacat/ Disabled					
		Tuna Netra/ Blind	Tuna Wicara/ Mute	Tuna Ganda/ Multiple Disabili- ties	Cacat Fisik/ Physical Disabili- ties	Cacat Mental/ Mentally Disabili- ties	Lain- nya/ Others
(1)	(2)	(3)	(4)	(5)	(6)	(7)	(8)
001 Singakerta	-	3	4	-	-	4	3
002 Lodontuh	-	2	6	-	7	1	1
003 Mas	-	-	4	-	15	4	1
004 Peliatan	-	6	12	2	5	13	4
005 Petulu	-	3	5	3	43	2	4
006 Ubud	-	2	1	-	1	1	-
007 Sayan	-	5	3	-	11	2	-
008 Kedewatan	-	2	4	1	11	1	1
Jumlah/Total : 2017	-	23	39	6	93	28	14
2016	-	23	40	-	99	28	14
2015	-	23	40	-	99	28	14
2014	-	14	24	-	8	24	11
2013	-	14	24	-	7	25	13

Sumber : Kantor Perbekel/Kelurahan
 Source : Village Office

Tabel 4.3.1: **Jumlah Tempat Ibadah Dirinci Menurut Jenisnya per Desa/Kelurahan di Kecamatan Ubud, 2017**
Table 4.3.1: **Number of Facilities for Worship by Village in Ubud Subdistrict, 2017**

Desa/ Village	Pura/ Temple	Masjid/ Mosque	Lang- gar/ Surau/ Small Mosque	Gereja Kristen/ Christian Church	Gereja Katolik/ Catholic Church	Vihara/ Vihara	Lain- nya/ Others	Jum- lah/ Total
(1)	(2)	(3)	(4)	(5)	(3)	(6)	(7)	(8)
001 Singakerta	32	-	-	-	-	-	-	32
002 Lodunduh	53	-	-	-	-	-	-	53
003 Mas	60	-	-	-	-	-	-	60
004 Peliatan	38	-	-	-	-	-	-	38
005 Petulu	18	-	-	-	-	-	-	18
006 Ubud	41	-	-	-	-	-	-	41
007 Sayan	31	-	-	-	-	-	-	31
008 Kedewatan	38	-	-	-	-	-	-	38
Jumlah/Total : 2017	311	-	-	-	-	-	-	311
2016	311	-	-	-	-	-	-	311
2015	311	-	-	-	-	-	-	311
2014	311	-	-	-	-	-	-	311
2013	311	-	-	-	-	-	-	311

Sumber : Kantor Perbekel/Kelurahan
 Source : Village Office

Tabel 4.3.2: Banyaknya Pemuka Agama/ Aliran Kepercayaan Terhadap Tuhan Yang Maha Esa per Desa/Kelurahan di Kecamatan Ubud, 2017
Number of Religious Leaders by Village in Ubud Subdistrict, 2017

Desa/ Village	Hindu/ Hindu			Is- lam/ Mos- lem	Kris- ten/ Chris- tian	Kato- lik/ Catho- lic	Bu- dha/ Bud- dhist	Lain- nya/ Others	Jum- lah/ Total
	Pen- deta/ Priest	Pemang- ku/ Pemang- ku	Jum- lah/ Total						
(1)	(2)	(3)	(4)	(5)	(6)	(7)	(8)	(9)	(10)
001 Singakerta	2	32	34	-	-	-	-	-	34
002 Lodtunduh	-	53	53	-	-	-	-	-	53
003 Mas	3	60	63	-	-	-	-	-	63
004 Peliatan	4	38	42	-	-	-	-	-	42
005 Petulu	3	18	21	-	-	-	-	-	21
006 Ubud	5	41	46	-	-	-	-	-	46
007 Sayan	-	31	31	-	-	-	-	-	31
008 Kedewatan	1	38	39	-	-	-	-	-	39
Jumlah/Total : 2017	18	311	329	-	-	-	-	-	329
2016	18	311	329	-	-	-	-	-	329
2015	16	311	327	-	-	-	-	-	327
2014	15	321	336	-	-	-	-	-	336
2013	23	327	350	-	-	-	-	-	350

Sumber : Kantor Perbekel/Kelurahan
 Source : Village Office



**PERTANIAN
AGRICULTURE**

5



Tabel 5.1: Luas Tanam, Panen, Produksi dan Produktifitas Padi Dirinci per Desa/Kelurahan di Kecamatan Ubud, 2015
Planting, Harvest, Rice Production and Productivity Detailed by Village in Ubud Subdistrict, 2015

Desa/Villages	Luas Tanam (Ha)/Planted large (Ha)	Luas Panen (Ha)/Harvested (Ha)	Produksi (Ton)/Production (Ton)	Produktivitas (Kw/Ha)/Productivity (Kw/Ha)	
(1)	(2)	(3)	(4)	(5)	
001 Singakerta	692	819	5 761	70,34	
002 Lodtunduh	477	557	3 918	70,37	
003 Mas	436	519	3 626	69,82	
004 Peliatan	586	624	4 500	72,16	
005 Petulu	100	124	775	62,75	
006 Ubud	791	652	4 838	74,21	
007 Sayan	463	497	3 538	71,18	
008 Kedewatan	265	297	2 053	69,21	
Jumlah/Total:	2015	3.810	4 088	29 009	70,96
	2015	3.810	4 088	29 009	70,96
	2015	3.810	4 088	29 009	70,96
	2014	4.061	4 038	25 500	62,38
	2013	4.295	4 478	30 885	68,97

* Data 2017 Tidak Tersedia

*Data 2017 Not Available

Sumber : Survei Pertanian Padi 2015

Source : Survei rice farming 2015

Tabel 5.2: **Luas Tanam, Panen, Produksi dan Produktifitas Jagung Dirinci per Desa/Kelurahan di Kecamatan Ubud, 2015**
Planting, Harvest, Maize Production and Productivity Detailed by Village in Ubud Subdistrict, 2015

Desa/Villages	Luas Tanam (Ha)/Planted large (Ha)	Luas Panen (Ha)/Harvested (Ha)	Produksi (Ton)/Production (ton)	Produktivitas (Kw/Ha)/Productivity (kw/ha)	
(1)	(2)	(3)	(4)	(5)	
001 Singakerta	9	9	35,28	2,55	
002 Lodtunduh	7	7	27,44	2,55	
003 Mas	-	-	-	-	
004 Peliatan	-	-	-	-	
005 Petulu	-	-	-	-	
006 Ubud	-	-	-	-	
007 Sayan	10	10	39,28	2,55	
008 Kedewatan	-	-	-	-	
Jumlah/Total	2015	26	26	102	7,65
	2015	26	26	102	7,65
	2015	26	26	102	7,65
	2014	-	-	-	-
	2013	-	-	-	-

* Data 2016 Tidak Tersedia

*.Data 2016 Not Available

Sumber : Survei Pertanian Padi 2015

Source : Survei rice farming 2015

Tabel 5.3: Luas Tanam, Panen, Produksi dan Produktifitas Ubi Jalar Dirinci per Desa/Kelurahan di Kecamatan Ubud, 2015
Planting, Harvest, Production and Productivity of Sweet Potatoes Detailed by Village in Ubud Subdistrict, 2015

Desa/Villages	Luas Tanam (Ha)/Planted large (Ha)	Luas Panen (Ha)/Harvested (Ha)	Produksi (Ton)/ Production (Ton)	Produktifitas (Kw/Ha)/ Productivity (Kw/Ha)	
(1)	(2)	(3)	(4)	(5)	
001 Singakerta	6	6	37,33	62,22	
002 Lodtunduh	1	1	6,21	62,10	
003 Mas	-	-	-	-	
004 Peliatan	-	-	-	-	
005 Petulu	4	4	26,62	66,55	
006 Ubud	1	1	6,63	66,30	
007 Sayan	9	9	51,02	56,69	
008 Kedewatan	4	4	20,19	50,48	
Jumlah/Total	2015	25	25	148,00	59,20
	2015	25	25	148,00	59,20
	2015	25	25	148,00	59,20
	2014	26	24	244,44	101,85
	2013	24	28	227,69	81,32

* Data 2016 Tersedia

* Data 2016 Not Available

Sumber : Survei Pertanian Padi 2015

Source : Survei rice farming 2015

Tabel 5.4: **Luas Tanam, Panen, Produksi dan Produktifitas Ubi Kayu Dirinci per Desa/Kelurahan di Kecamatan Ubud, 2015**
Planting, Harvest, Production and Productivity of Cassava Detailed Village by Village in Ubud Subdistrict, 2015

Desa/Villages	Luas Tanam (Ha)/Planted large (Ha)	Luas Panen (Ha)/Harvested (Ha)	Produksi (Ton)/ Production (Ton)	Produktivitas (Kw/Ha)/ Productivity (Kw/Ha)
(1)	(2)	(3)	(4)	(5)
001 Singakerta	57	55	0,36	65,45
002 Lodtunduh	66	66	0,97	14,70
003 Mas	-	-	-	-
004 Peliatan	-	-	-	-
005 Petulu	5	4	0,08	19,54
006 Ubud	-	-	-	-
007 Sayan	10	9	0,53	58,89
008 Kedewatan	3	2	0,16	80,00
Jumlah/Total				
2015	14	13	2,10	154,31
2015	14	13	2,10	154,31
2015	14	13	2,10	154,31
2013	26	27	0,42	155,56
2012	28	32	0,50	156,25

* Data 2016 Tidak Tersedia

* Data 2016 Not Available

Sumber : Survei Pertanian Padi

Source : Survei rice farming 2015

Tabel 5.5: Luas Tanam, Panen, Produksi dan Produktifitas Kacang Tanah Dirinci per Desa/Kelurahan di Kecamatan Ubud, 2015
Planting, Harvest, Production and Productivity Peanut Detailed by Village in Ubud Subdistrict, 2015

Desa/Villages	Luas Tanam (Ha)/Planted large (Ha)	Luas Panen (Ha)/Harvested (Ha)	Produksi (Ton)/Production (ton)	Produktivitas (Kw/Ha)/Productivity (Kw/Ha)
(1)	(2)	(3)	(4)	(5)
001 Singakerta	-	-	-	-
002 Lodtunduh	-	-	-	-
003 Mas	-	-	-	-
004 Peliatan	-	-	-	-
005 Petulu	-	-	-	-
006 Ubud	-	-	-	-
007 Sayan	-	-	-	-
008 Kedewatan	-	-	-	-
Jumlah/Total	2015	-	-	-
	2015	-	-	-
	2015	-	-	-
	2014	60	60	78,95
	2013	54	54	109,87

*Data 2016 Tidak Tersedia

*Data 2016 Not Available

Sumber : Survei Pertanian Padi

Source : Survei rice farming 2015

Tabel 5.6: **Luas Tanam, Panen, Produksi dan Produktifitas Kacang Kedelai Dirinci per Desa/Kelurahan di Kecamatan Ubud, 2015**
Planting, harvest, Production and Productivity of Soy bean Detailed by Village in Ubud Subdistrict, 2015

Desa/Villages	Luas Tanam (Ha)/Planted large	Luas Panen (Ha)/Harvested (Ha)	Produksi (Ton)/ Production (ton)	Produktivitas (Kw/Ha)/ Productivity (kw/ha)	
(1)	(2)	(3)	(4)	(5)	
001 Singakerta	117	106	112,91	10,65	
002 Lodtunduh	56	69	73,09	10,59	
003 Mas	-	-	-	-	
004 Peliatan	-	-	-	-	
005 Petulu	-	-	-	-	
006 Ubud	-	-	-	-	
007 Sayan	-	-	-	-	
008 Kedewatan	-	-	-	-	
Jumlah/Total	2015	173	175	186,00	10,63
	2015	173	175	186,00	10,63
	2015	173	175	186,00	10,63
	2014	230	228	326,27	14,31
	2013	230	228	326,27	14,31

* Data 2016 Tersedia

* Data 2016 Not Available

Sumber : Survei Pertanian Padi

Source : Survei rice farming 2015

Tabel 5.7: Luas Tanam, Panen, Produksi dan Produktifitas Kacang Hijau Dirinci per Desa/Kelurahan di Kecamatan Ubud, 2015
Planting, Harvest, Production and Productivity Mung Detailed by Village in Ubud Subdistrict, 2015

Desa/Villages	Luas Tanam (Ha)/Planted large	Luas Panen (Ha)/Harvested (Ha)	Produksi (Ton)/Production (ton)	Produktivitas (Kw/Ha)/Productivity (kw/ha)
(1)	(2)	(3)	(4)	(5)
001 Singakerta	-	-	-	-
002 Lodtunduh	16	16	25	15,63
003 Mas	-	-	-	-
004 Peliatan	-	-	-	-
005 Petulu	-	-	-	-
006 Ubud	-	-	-	-
007 Sayan	-	-	-	-
008 Kedewatan	-	-	-	-
Jumlah/Total				
2015	16	16	25	15,63
2015	16	16	25	15,63
2015	16	16	25	15,63
2014	-	-	-	-
2013	-	-	-	-

* Data 2016 Tersedia

* Data 2016 Not Available

Sumber : Survei Pertanian Padi

Source : Survei rice farming 2015

Tabel 5.8: **Jumlah Pohon dan Produksi Tanaman Buah-Buahan Dirinci per Desa/Kelurahan di Kecamatan Ubud Tahun 2015**
Number of Production Plants and Trees Fruits Detailed Village in Ubud Subdistrict, 2015

Desa/Villages	Jeruk/Oranges		Jambu Biji/Guava		Jambu Air/Guava Water	
	Pohon/ Tree	Produksi (Ton)/ Production (ton)	Pohon/ Tree	Produksi (Ton)/ Production (ton)	Pohon/ Tree	Produksi (Ton)/ Production (ton)
(1)	(2)	(3)	(4)	(5)	(6)	(7)
001 Singakerta	245	3,2	160	6,1	104	1,05
002 Lodtunduh	258	3,3	45	3,8	236	2,54
003 Mas	242	3,2	42	3,9	206	2,70
004 Peliatan	96	1,2	184	7,7	218	3,19
005 Petulu	247	3,5	443	11,1	189	2,61
006 Ubud	404	5,8	197	5,6	155	2,10
007 Sayan	13	0,3	105	5,5	78	0,54
008 Kedewatan	38	0,7	75	4,0	67	0,58
Jumlah/Total	2015 1 543	21	1 251	48	1 253	15
	2015 1 543	21	1 251	48	1 253	15
	2015 1 543	21	1 251	48	1 253	15
	2014 1 546	12	1 251	31	1 253	34
	2013 1 543	11	1 251	13	1 241	31

* Data 2015 Tidak Tersedia

* Data 2016 Not Available

Sumber : Survei Pertanian Hortikultura 2015

Source : Survei Hortikultura 2015

Tabel 5.8: **Lanjutan 1**
Table 5.8: **Continued 1**

Desa/Villages	Sawo/Sapodila		Nanas/Pineapple		Pepaya/Papaya	
	Pohon/ Tree	Produksi (Ton)/ Production (ton)	Pohon/ Tree	Produksi (Ton)/ Production (ton)	Pohon/ Tree	Produksi (Ton)/ Production (ton)
(1)	(8)	(9)	(10)	(11)	(12)	(13)
001 Singakerta	32	1,57	-	-	645	20,14
002 Lodtunduh	48	0,74	310	2,29	349	17,08
003 Mas	62	1,79	373	3,07	356	17,72
004 Peliatan	190	6,53	99	0,14	207	8,34
005 Petulu	653	17,79	318	2,21	259	13,57
006 Ubud	173	6,37	99	0,14	250	13,05
007 Sayan	17	0,94	68	0,07	444	12,63
008 Kedewatan	25	1,57	75	0,07	210	9,46
Jumlah/Total	2015 1 200	37	1 342	8	2 720	112
	2015 1 200	37	1 342	8	2 720	112
	2015 1 200	37	1 342	8	2 720	112
	2014 1 200	33	1 394	9	2 720	88
	2013 1 200	16	1 394	10	3 041	55

Tabel 5.8: **Lanjutan 2**
Table 5.8: **Continued 2**

Desa/Villages	Pisang/Banana		Nangka/Jacfruit		Duku/Duku	
	Pohon/ Tree	Produksi (Ton)/ Production (ton)	Pohon/ Tree	Produksi (Ton)/ Production (ton)	Pohon/ Tree	Produksi (Ton)/ Production (ton)
(1)	(14)	(15)	(16)	(17)	(18)	(19)
001 Singakerta	5.810	244,04	360	14,18	16	0,18
002 Lodtunduh	5.849	243,73	679	21,12	40	0,37
003 Mas	6.164	251,10	996	42,24	27	0,18
004 Peliatan	1.775	72,79	317	14,08	76	0,73
005 Petulu	1.489	61,91	1.045	70,34	484	16,50
006 Ubud	33.708	1 177,96	936	28,15	130	3,67
007 Sayan	2.433	103,97	207	14,04	35	0,18
008 Kedewatan	2.962	119,10	205	7,04	27	0,18
Jumlah/Total	2015 60 190	2 275	4 745	211	808	22
	2015 60 190	2 275	4 745	211	808	22
	2015 60 190	2 275	4 745	211	808	22
	2014 60 193	2 288	4 745	200	808	30
	2013 57 731	2235	4540	84	808	35

Tabel 5.8: **Lanjutan 3**
Table 5.8: *Continued 3*

Desa/Villages	Rambutan/Rambutan		Semangka/ Watermelon		Salak/Salak	
	Pohon/ Tree	Produksi (Ton)/ Production (ton)	Pohon/ Tree	Produksi (Ton)/ Production (ton)	Pohon/ Tree	Produksi (Ton)/ Production (ton)
(1)	(20)	(21)	(22)	(23)	(24)	(25)
001 Singakerta	340	4,08	-	-	-	-
002 Lodtunduh	883	19,20	-	-	104	0,17
003 Mas	661	8,16	-	-	261	1,02
004 Peliatan	266	2,88	-	-	35	0,07
005 Petulu	965	19,20	-	-	-	-
006 Ubud	1 214	26,40	-	-	32	0,07
007 Sayan	1 054	21,60	-	-	52	0,09
008 Kedewatan	1 010	18,48	-	-	75	0,10
Jumlah/Total	2015 6 393	120,00	-	-	559	1,51
	2015 6 393	120,00	-	-	559	1,51
	2015 6 393	125,00	-	-	566	1,60
	2014 6 393	125,00	-	-	566	1,60
	2013 6 393	82,10	-	-	562	1,48

Tabel 5.8: **Lanjutan 4**
Table 5.8: **Continued 4**

Desa/Villages	Apokat/Avocado		Anggur/Graves		Mangga/Mango		
	Pohon/ Tree	Produksi	Pohon/ Tree	Produksi	Pohon/ Tree	Produksi	
		(Ton)/ Production (ton)		(Ton)/ Production (ton)		(Ton)/ Production (ton)	
(1)	(26)	(27)	(28)	(29)	(30)	(31)	
001 Singakerta	96	1,68	-	-	212	5,25	
002 Lodtunduh	19	0,40	-	-	543	16,25	
003 Mas	37	0,72	-	-	568	22,00	
004 Peliatan	44	0,88	-	-	394	12,50	
005 Petulu	651	14,70	-	-	608	17,50	
006 Ubud	305	5,00	-	-	679	22,25	
007 Sayan	37	0,56	-	-	217	9,50	
008 Kedewatan	57	0,76	-	-	410	12,25	
Jumlah/Total							
	2017	1 246	24,70	-	-	3 631	117,50
	2016	1 246	24,70	-	-	3 631	117,50
	2015	1 216	19,00	-	-	3 847	103,50
	2014	1 320	30,00	-	-	3 847	130,00
	2013	1 320	28,00	-	-	3 847	69,35

Tabel 5.8: **Lanjutan 5**
Table 5.8: **Continued 5**

Desa/Villages	Manggis/ Mangosteen		Durian/Durian		Lainnya/Others		
	Pohon/ Tree	Produksi (Ton)/ Production (ton)	Pohon/ Tree	Produksi (Ton)/ Production (ton)	Pohon/ Tree	Produksi (Ton)/ Production (ton)	
(1)	(32)	(33)	(34)	(35)	(36)	(37)	
001 Singakerta	15	-	150	13,35	83	0,12	
002 Lodtunduh	288	6,15	80	4,75	55	0,05	
003 Mas	56	0,90	79	1,95	28	0,04	
004 Peliatan	15	-	76	2,50	106	0,12	
005 Petulu	250	0,60	68	6,50	618	1,24	
006 Ubud	53	1,20	112	6,90	70	0,08	
007 Sayan	51	0,60	125	4,75	73	0,12	
008 Kedewatan	36	0,90	105	5,80	56	0,06	
Jumlah/Total	2017	764	10,35	795	47	1.089	1,83
	2016	764	10,35	795	47	1.089	1,83
	2015	685	14,04	703	42	1.088	2,50
	2014	685	15,90	705	54	1.088	1,51
	2013	340	7,56	705	48	1.088	1,52

* Data 2016 tidak tersedia

* Data 2016 Not Available

Sumber : Survei Pertanian Padi

Source : Survei rice farming 2015

Tabel
Table 5.9:

**Luas Tanam dan Produksi Perkebunan Rakyat Menurut Desa/
Kelurahan di Kecamatan Ubud ,2017**
*Planting and Plantation Production of the Village People's Detailed
by Village in Ubud Subdistrict, 2017*

Desa/Villages	Kopi/Coffee		Cengkeh/Clove		Kelapa Dalam/Coconut		
	Luas Tanam (Ha)/ Planted large (Ha)	Produksi (Ton)/ Production (Ton)	Luas Tanam (Ha)/ Planted large (Ha)	Produksi (Ton)/ Production (Ton)	Luas Tanam (Ha)/Planted large (Ha)	Produksi (Ton)/ Production (Ton)	
(1)	(2)	(3)	(4)	(5)	(6)	(7)	
001 Singakerta	1,10	0,41	1,00	0,15	86,00	82,32	
002 Lodtunduh	-	-	-	-	95,00	92,12	
003 Mas	-	-	0,50	0,1	64,30	61,05	
004 Peliatan	-	-	-	-	57,25	55,12	
005 Petulu	-	-	1,00	0,20	59,00	56,84	
006 Ubud	-	-	-	-	47,00	45,08	
007 Sayan	0,95	0,25	1,00	0,20	147,00	137,22	
008 Kedewatan	6,95	2,56	1,25	0,20	144,00	140,14	
Jumlah/Total							
	2017	9,00	3,22	4,75	0,85	699,55	669,89
	2016	9,00	3,48	4,75	1,06	688,75	643,60
	2015	9,00	3,99	4,75	0,31	688,75	652,40
	2014	9,20	3,00	5,00	2,21	749,55	662,52
	2013	5,70	2,90	5,00	1,20	674,55	615,07

Tabel 5.9: **Lanjutan 1**
Table *Continued 1*

Desa/Villages	Tembakau/Tobacco		Kakao/Cocoa		Panili/Vanilla		
	Luas Tanam (Ha)/ Planted large (Ha)	Produksi (Ton)/ Production (Ton)	Luas Tanam (Ha)/ Planted large (Ha)	Produksi (Ton)/ Production (Ton)	Luas Tanam (Ha)/ Planted large (Ha)	Produksi (Ton)/ Production (Ton)	
(1)	(8)	(9)	(10)	(11)	(12)	(13)	
001 Singakerta	-	-	6,00	2,45	-	-	
002 Lodontuh	-	-	1,65	0,7	-	-	
003 Mas	-	-	0,60	0,26	-	-	
004 Peliatan	-	-	-	-	-	-	
005 Petulu	-	-	1,25	0,53	-	-	
006 Ubud	-	-	-	-	-	-	
007 Sayan	-	-	1,40	0,38	-	-	
008 Kedewatan	-	-	3,00	1,07	-	-	
Jumlah/Total/	2017	-	-	13,90	5,39	-	-
	2016	-	-	13,90	5,48	-	-
	2015	-	-	13,90	11,025	-	-
	2014	-	-	14,33	11,245	-	-
	2013	-	-	12,95	8,26	-	-

Tabel 5.9: **Lanjutan 2**
Table 5.9: **Continued 2**

Desa/Villages	Jambu Mete/Ca- shew		Kapok/Kapok		Lainnya/Others	
	Luas Tanam (Ha)/ Planted large (Ha)	Produksi (Ton)/ Production (Ton)	Luas Ta- nam (Ha)/ Planted large (Ha)	Produksi (Ton)/ Production (Ton)	Luas Tanam (Ha)/ Planted large (Ha)	Produksi (Ton)/ Production (Ton)
(1)	(14)	(15)	(16)	(17)	(18)	(19)
001 Singakerta	-	-	-	-	-	-
002 Lodtunduh	-	-	-	-	-	-
003 Mas	-	-	-	-	-	-
004 Peliatan	-	-	-	-	-	-
005 Petulu	-	-	-	-	-	-
006 Ubud	-	-	-	-	-	-
007 Sayan	-	-	-	-	-	-
008 Kedewatan	-	-	-	-	-	-
Jumlah/Total	2017	-	-	-	-	-
	2016	-	-	-	-	-
	2015	-	-	-	-	-
	2014	-	-	-	-	-
	2013	-	-	-	-	-

Sumber : Dinas Pertanian Kabupaten Gianyar
Source : Departemen of Agricultural Gianyar Regerency

Tabel 5.10: **Banyaknya Populasi Ternak Menurut Jenisnya Dirinci per Desa/ Kelurahan di Kecamatan Ubud, 2016**
Number of Livestock Population Detailed by Kind by Village in Ubud Subdistrict, 2016

Desa/Villages	Jenis Ternak/Livestock type			
	Sapi/Cow	Kambing/Goat	Babi/Pig	Kuda/Horse
(1)	(2)	(3)	(4)	(5)
001 Singakerta	433	4	3 213	-
002 Lodtunduh	347	-	1 763	-
003 Mas	146	-	1 114	-
004 Peliatan	47	-	299	-
005 Petulu	106	-	585	-
006 Ubud	60	-	218	-
007 Sayan	236	4	1 934	-
008 Kedewatan	134	-	853	-
Jumlah/Total				
2017	1 509	8	9 979	-
2016	1 443	8	10 764	-
2015	1 524	8	10 786	-
2014	1 800	13	11 266	-
2013	1 796	8	7 313	-

Tabel 5.10: **Lanjutan**
Table *Continued*

Desa/Villages	Jenis Ternak/Livestock type			
	Sapi Perah/ Dairy Cows	Domba/Sheep	Kerbau/Buffalo	Kelinci/Rabbit
(1)	(6)	(7)	(8)	(9)
001 Singakerta	-	-	-	-
002 Loddunduh	-	-	-	-
003 Mas	-	-	-	-
004 Peliatan	-	-	-	-
005 Petulu	-	-	-	-
006 Ubud	-	-	-	-
007 Sayan	-	-	-	-
008 Kedewatan	-	-	-	-
Jumlah/Total	2017	-	-	-
	2016	-	-	-
	2015	-	-	-
	2014	-	-	-
	2013	-	-	-

Sumber : Dinas Pertanian Kabupaten Gianyar
Source : Departemen of Agricultural Gianyar Regerency

Tabel 5.11: **Banyaknya Populasi Unggas Menurut Jenisnya Dirinci per Desa/Kelurahan di Kecamatan Ubud, 2017**
By Kind of Poultry Population per Village Detailed by Village in Ubud Subdistrict, 2017

Desa/Villages	Jenis Ternak/Livestock type					
	Ayam Ras Petelor/Layer	Ayam Ras Pedaging/ Broiler	Ayam Buras/ Native Chiken	Itik/Duck	Lainnya/ Others	
(1)	(2)	(3)	(4)	(5)	(6)	
001 Singakerta	4 000	45 000	2 632	750	-	
002 Lodtunduh	-	-	3 450	1 900	-	
003 Mas	-	2 000	2 370	-	-	
004 Peliatan	-	-	1 020	150	-	
005 Petulu	-	-	1 100	200	-	
006 Ubud	-	-	1 258	200	-	
007 Sayan	-	-	2 120	2 000	-	
008 Kedewatan	-	2 000	2 300	800	-	
Jumlah/Total	2017	4 000	49 000	16 250	6 000	-
	2016	6 000	39 000	15 500	5 900	-
	2015	6 000	49 000	16 308	6 300	-
	2014	6 000	52 000	16 308	8 310	277
	2013	6 000	74 000	17 030	13 060	277

Sumber : Dinas Pertanian Kabupaten Gianyar
 Source : Departemen of Agricultural Gianyar Reperency

Tabel 5.12: **Produksi Ikan Dirinci Menurut Jenisnya per Desa /Kelurahan di Kecamatan Ubud, 2017**
Detailed Fish Production by Kind by Village in Ubud Subdistrict, 2017

Desa/Villages	Ikan Laut (Ton)/Marine fish			Ikan Air Tawar (Ton)/ Freshwater Fish	Jumlah (Ton)/Total (Ton)
	Tongkol/Cob	Teri/Teri	Lainnya/ Others		
(1)	(2)	(3)	(4)	(5)	(6)
001 Singakerta	-	-	-	45,41	45,41
002 Lodtunduh	-	-	-	4,02	4,02
003 Mas	-	-	-	2,82	2,82
004 Peliatan	-	-	-	2,53	2,53
005 Petulu	-	-	-	-	-
006 Ubud	-	-	-	-	-
007 Sayan	-	-	-	2,81	2,81
008 Kedewatan	-	-	-	2,41	2,41
Jumlah/Total	2017	-	-	-	60,00
	2016	-	-	-	55,57
	2015	-	-	-	33,15
	2014	-	-	-	392,45
	2013	-	-	-	9,38

Sumber :Dinas Ketahanan Pangan, Kelautan, dan Perikanan Kabupaten Gianyar
 Source : Departemen of Food Security, Maritime and Livestock fisheries of Gianyar Regerency

Tabel
Table 5.13:

Jumlah Subak dan Luas Areal Baku Subak Dirinci Menurut Jenis Irigasi per Desa/Kelurahan di Kecamatan Ubud, 2017
Number of Subak and Baku Area Detailed Subak Irrigation by Type by Village in Ubud Subdistrict, 2017

Desa/Villages	Jumlah Subak/ Number of Subak	Luas Sawah (Ha)/Rice area (Ha)				Luas (Ha)/ Total Area (Ha)
		Setengah Teknis/ Technical half	Sederhana /Simple	Sederhana non PU/ Simple non PU	Tadah Hujan/ Rainfed	
(1)	(2)	(3)	(4)	(5)	(6)	(7)
001 Singakerta	15	365	-	-	-	365
002 Lodtunduh	13	253	-	-	-	253
003 Mas	10	198	-	-	-	198
004 Peliatan	13	238	-	-	-	238
005 Petulu	4	67	-	-	-	67
006 Ubud	20	314	-	-	-	314
007 Sayan	9	198	-	-	-	198
008 Kedewatan	6	155	-	-	-	155
Jumlah/Total	2017	90	1 788	-	-	1 788
	2016	90	1 840	-	-	1 840
	2015	90	1 840	-	-	1 840
	2014	90	1 866	-	-	1 866
	2013	91	1 891	-	-	1 891

Sumber : UPT Pertanian Kecamatan Ubud
Source : Agricultural Service of Ubud district



PERINDUSTRIAN
INDUSTRY

6



Tabel 6.1: **Banyaknya Perusahaan Industri Menurut Kelompok Industri Dirinci per Desa /Kelurahan di Kecamatan Ubud, 2017**

Number of Industrial Companies by Group of Industry by Village in Ubud Subdistrict, 2017

Desa/ Village	Kategori Industri/ Industrial Categories	
	Besar/ Large	Sedang/ Medium
(1)	(2)	(3)
001 Singakerta	1	-
002 Lodtunduh	-	1
003 Mas	3	3
004 Peliatan	1	5
005 Petulu	1	-
006 Ubud	-	1
007 Sayan	-	-
008 Kedewatan	-	-
Jumlah/Total :		
2017	6	10
2016	5	10
2015	5	10
2014	5	10
2013	4	11

Sumber : Survei Industri Besar Sedang Tahunan 2014
Source : Survey Annual Industry Large Medium 2014

Tabel 6.2: **Jumlah Tenaga Kerja Perusahaan Industri Menurut Kelompok Industri Dirinci per Desa/Kelurahan di Kecamatan Ubud, 2017**
Number of Industrial Companies Workers by Group of Industry by Village in Ubud Subdistrict, 2017

Desa/ Village	Kategori Industri/ Industrial Categories	
	Besar/ Large	Sedang/ Medium
(1)	(2)	(3)
001 Singakerta	47	-
002 Lodtunduh	-	-
003 Mas	511	124
004 Peliatan	127	139
005 Petulu	110	-
006 Ubud	-	41
007 Sayan	-	-
008 Kedewatan	-	-
Jumlah/Total :		
2017	795	304
2016	751	299
2015	783	307
2014	717	428
2013	717	428

Sumber : Survei Industri Besar Sedang Tahunan

Source : Survey Annual Industry Large Medium



PERDAGANGAN
TRADING



Tabel
Table 7.1:

Jumlah Sarana Perekonomian Menurut Jenisnya Dirinci per Desa/Kelurahan di Kecamatan Ubud, 2017

Total Economic Facilities by Kind by Village in Ubud Subdistrict, 2017

Desa/ Village	Pasar Umum/ Common Market		Kelompok Pertokoan/ Group of Stores	Lainnya/ Others
	Bangunan Permanen/ Permanent Buildings	Bangunan Semi Permanen/ Semi Permanent Buildings		
(1)	(2)	(3)	(4)	(5)
001 Singakerta	2	-	-	-
002 Lodtunduh	-	-	-	1
003 Mas	1	1	1	1
004 Peliatan	1	-	2	-
005 Petulu	-	-	1	-
006 Ubud	1	-	4	-
007 Sayan	1	-	-	-
008 Kedewatan	-	-	-	-
Jumlah/Total :				
2017	6	1	8	2
2016	7	-	8	2
2015	10	-	8	2
2014	10	-	8	2
2013	9	-	8	2

Sumber : Kantor Perbekel/Kelurahan
Source : Village Office



**TRANSPORTASI, KOMUNIKASI,
DAN PARIWISATA**
*TRANSPORTATION, COMMUNICATION,
AND TOURISM*

8



Tabel 8.1: Panjang Jalan Menurut Jenis Permukaan Jalan dan Jumlah Jembatan di Rinci per Desa/Kelurahan di Kecamatan Ubud, 2017

Length of Roads by Type of Road Surface Condition and Number of Bridge by Village in Ubud Subdistrict, 2017

Desa/ Village	Jenis Permukaan Jalan (Km)/ Type of Surface (Km)			Jumlah Jembatan/ Number of Bridge
	Aspal/Asphalt	Diperkeras/ Gravel	Tanah/ Soil	
(1)	(2)	(3)	(4)	(5)
001 Singakerta	25	-	-	1
002 Lodtunduh	18	-	-	-
003 Mas	23	-	-	1
004 Peliatan	22	-	-	1
005 Petulu	18	-	-	-
006 Ubud	38	-	-	2
007 Sayan	17	-	-	1
008 Kedewatan	16	-	-	-
Jumlah/ Total :				
2017	177	-	-	6
2016	126	-	-	6
2015	126	-	-	6
2014	126	-	-	4
2013	126	-	-	4

Sumber : Kantor Perbekel/Kelurahan
Source : Village Office

Tabel 8.2: Banyaknya Sarana Komunikasi Menurut Jenisnya Dirinci per Desa/Kelurahan di Kecamatan Ubud, 2017
Table Number of Communication Facility by Village in Ubud Subdistrict, 2017

Desa/ Village	Kantor Pos/ Post Office	Kantor Pos Pem- bantu/ Auxiliary Post Office	Kantor Telepon/ Phone Office
(1)	(2)	(3)	(4)
001 Singakerta	-	-	-
002 Lodtunduh	-	-	-
003 Mas	-	-	-
004 Peliatan	-	-	1
005 Petulu	-	-	-
006 Ubud	1	-	-
007 Sayan	-	-	-
008 Kedewatan	-	-	-
Jumlah/Total :			
2017	1	-	1
2016	1	-	1
2015	1	-	1
2014	1	-	1
2013	1	-	1

Sumber : Kantor Perbekel/Kelurahan
Source : Village Office



KEUANGAN
FINANCIAL



Tabel 9.1: Jumlah Sarana Bank dan Lembaga Keuangan Lainnya Dirinci per Desa/Kelurahan di Kecamatan Ubud 2017
Total Bank Facilities and Other Financial Institutions by Village in Ubud Subdistrict, 2017

Desa/ Village	Bank	Lembaga Perkreditan Desa (LPD)/ Village Credit Institutions	KUD/ Village Unit Cooperatives	Jumlah/ Total
(1)	(2)	(3)	(4)	(5)
001 Singakerta	1	5	-	6
002 Lodtunduh	-	4	-	4
003 Mas	3	4	-	7
004 Peliatan	5	2	-	7
005 Petulu	3	4	-	7
006 Ubud	4	6	1	11
007 Sayan	-	2	1	3
008 Kedewatan	1	5	-	6
Jumlah/Total :				
2017	17	32	2	51
2016	21	32	1	54
2015	27	32	1	195
2014	27	32	1	195
2013	26	32	1	194

Sumber : Kantor Perbekel/Kelurahan
 Source : Village Office

Tabel9.2:
*Table***Banyaknya Usaha Koperasi Menurut Kecamatan di Kabupaten Gianyar , 2017**
Number of Cooperatives Subdistrict in Gianyar Regency Subdistrict, 2017

Kecamatan/ Subdistrict	KUD	KOPKAR	Lain- nya/ Others	Jumlah/ Total
(1)	(2)	(4)	(5)	(6)
1. Sukawati	2	4	241	247
2. Blahbatuh	2	-	160	162
3. Gianyar	2	5	235	242
4. Tampaksiring	2	-	123	125
5. U b u d	2	7	159	168
6. Tegallalang	1	1	160	162
7. Payangan	1	1	103	105
2017	12	18	1 181	1 211

Sumber : Dinas Koperasi Kabupaten Gianyar

Source : Cooperative Service of Gianyar Regency

Tabel 9.3: **Pendapatan dan Pengeluaran Pemerintah Desa Menurut Sumber dan Jenis Pengeluaran Dirinci per Desa/Kelurahan di Kecamatan Ubud 2017 (Rp. 000,-)**

Government Revenues and Expenditures by Type of Expenditures by Village in Ubud Subdistrict, 2017 (Rp. 000,-)

Desa/ Village	Pendapatan/ Revenue		Pengeluaran/ Expenditure	
	Rutin/ Routine	Pembangunan/ Develop- ment	Rutin/ Routine	Pembangunan/ Develop- ment
(1)	(2)	(3)	(4)	(5)
001 Singakerta	5194 242	-	737 530	4387 076
002 Lodtunduh	4319 000	-	942 000	3539 000
003 Mas	5640 800	-	1134 019	3307 050
004 Peliatan	3868 382	-	1012 000	3399 000
005 Petulu	3289 000	-	558 602	3610 041
006 Ubud	-	-	-	-
007 Sayan	3764 000	-	980 000	2911 000
008 Kedewatan	4283 000	-	850 000	3614 000
Jumlah/Total :				
2017	30.358.424	-	6.214.151	24.767.167
2016	29.079.069	-	5.543.277	21.979.592
2015	16.782.518	-	3.599.026	13.233.492
2014	10.765.833	-	3.070.193	7.891.148
2013	8.049.000	-	2.416.000	5.829.000

Sumber : Kantor Perbekel/Kelurahan
Source : Village Office

Tabel 9.4: **Penerimaan Pembangunan Desa Menurut Sumber Penerimaan Dirinci per Desa/Kelurahan di Kecamatan Ubud, 2017 (Rp. 000,-)**
Village Development Acceptances by Type of Revenues per by Village in Ubud Subdistrict, 2017 (Rp. 000,-)

Desa/ Village	Pendapatan/ Revenue			
	Pendapatan Asli Daerah/ Regional Revenue	Bantuan Dari Pemerintah/ Support from the Government	Swadaya Masyarakat/ Society's Self- help	Lainnya/ Others
(1)	(2)	(3)	(4)	(5)
001 Singakerta	46 470	5194 292	-	-
002 Lodtunduh	47 000	4319 000	-	-
003 Mas	56 408	4207 941	-	-
004 Peliatan	30 000	3289 000	-	-
005 Petulu	30 000	4138 643	-	-
006 Ubud	-	-	-	-
007 Sayan	40 000	3804 000	-	-
008 Kedewatan	40 000	4083 000	-	-
Jumlah/Total :				
2017	289 878	29035 876	-	-
2016	351 672	28771 204	-	-
2015	541 194	16241 329	-	-
2014	611 887	9.613.629	-	-
2013	481 000	7.568.000	-	-

Sumber : Kantor Perbekel/Kelurahan
 Source : Village Office

DATA
MENCERDASKAN BANGSA
Enlighten The Nation



**BADAN PUSAT STATISTIK
KABUPATEN GIANYAR**
BPS-Statistics of Gianyar Regency

Jl. Erlangga No. 5 Gianyar
Telp:(0361) 943075
Website: <http://gianyarkab.bps.go.id>
E-mail: bps5104@bps.go.id

ISSN 2502-1354



9 772502 135009 >