

STATISTIK INDUSTRI BESAR DAN SEDANG DAERAH ISTIMEWA YOGYAKARTA

*Large and Medium Industrial Statistics of
Daerah Istimewa Yogyakarta*

2022

Volume 13, 2024



**BADAN PUSAT STATISTIK
PROVINSI DAERAH ISTIMEWA YOGYAKARTA
BPS-STATISTICS OF DAERAH ISTIMEWA YOGYAKARTA PROVINCE**

STATISTIK INDUSTRI BESAR DAN SEDANG DAERAH ISTIMEWA YOGYAKARTA

*Large and Medium Industrial Statistics of
Daerah Istimewa Yogyakarta*

2022

Volume 13, 2024

<https://yogyakarta.bps.go.id>



BADAN PUSAT STATISTIK

PROVINSI DAERAH ISTIMEWA YOGYAKARTA

BPS-STATISTICS OF DAERAH ISTIMEWA YOGYAKARTA PROVINCE

**STATISTIK INDUSTRI BESAR DAN SEDANG
DAERAH ISTIMEWA YOGYAKARTA 2022**

*Large and Medium Industrial Statistics of
Daerah Istimewa Yogyakarta 2022
Volume 13, 2024*

Katalog/Catalogue : 6103025.34

ISSN : 2657-1226

Nomor Publikasi / Publication Number: 34000.24053

Ukuran Buku/Book Size: 21 cm x 29,7 cm

Jumlah Halaman/Number of Pages : xiv + 101 halaman/pages

Penyusun Naskah/Manuscript Drafter:

BPS Daerah Istimewa Yogyakarta

BPS-Statistics Daerah Istimewa Yogyakarta Province

Penyunting/Editor:

BPS Provinsi Daerah Istimewa Yogyakarta

BPS-Statistics Daerah Istimewa Yogyakarta Province

Pembuat Kover/Cover Designer:

BPS Provinsi Daerah Istimewa Yogyakarta

BPS-Statistics Daerah Istimewa Yogyakarta Province

Penerbit/Publisher:

©BPS Provinsi Daerah Istimewa Yogyakarta

BPS-Statistics Daerah Istimewa Yogyakarta Province

Sumber Ilustrasi/Illustration Source:

www.canva.com

<https://stabilitasbisnis.com/>

Dilarang mereproduksi dan/atau menggandakan sebagian atau seluruh isi buku ini untuk tujuankomersial tanpa izin tertulis dari Badan Pusat Statistik Provinsi Daerah Istimewa Yogyakarta.

It is prohibited to reproduce and/or duplicate part or all of this book for commercial purpose without permission from BPS-Statistics Daerah Istimewa Yogyakarta Province.

TIM PENYUSUN

COMPILERS

Statistik Industri Besar dan Sedang Daerah Istimewa Yogyakarta 2022
Large and Medium Industrial Statistics of Daerah Istimewa Yogyakarta 2022
Volume 13, 2024

Pengarah/Director

Herum Fajarwati

Penanggung Jawab/Persons in Charge

Suparna

Penyunting/Editors

Suparna

Rahmawati

Penulis Naskah/Writers

Vidya Hayuningtyas

Pengolah Data/Data Processors

Lani Amaliah • Rieka Evy Mulyanti • Agus Susanto • Mudjiono
Ayu Paramudita • Yuditha Arum Sari • Putri Hera Lusmana • Vidya Hayuningtyas

Penata Letak/Layouters

Vidya Hayuningtyas

Penerjemah/Translator

Vidya Hayuningtyas

KATA PENGANTAR

Publikasi Statistik Industri Besar dan Sedang Provinsi Daerah Istimewa Yogyakarta 2022 merupakan publikasi rutin yang diterbitkan oleh Badan Pusat Statistik Provinsi Daerah Istimewa Yogyakarta setiap tahunnya. Publikasi ini menggunakan Klasifikasi Baku Lapangan Usaha Indonesia (KBLI) 2020 yang disesuaikan dengan *International Standard Industrial Classification of All Economic Activities (ISIC) Rev 4*. Data yang disajikan dalam publikasi ini merupakan hasil pengolahan Survei Tahunan Industri Manufaktur Skala Menengah dan Besar Tahun 2022 yang dikumpulkan selama tahun 2023.

Publikasi Statistik Industri Besar dan Sedang menyajikan data mengenai perusahaan industri manufaktur yang ada di Provinsi Daerah Istimewa Yogyakarta meliputi jumlah perusahaan, jumlah dan komposisi tenaga kerja, pengeluaran untuk tenaga kerja, pemakaian tenaga listrik, pemakaian bahan bakar, nilai input, output, nilai tambah dan nilai jual beli barang modal tetap.

Dengan diterbitkannya publikasi ini, diharapkan dapat lebih melengkapi informasi bagi pengguna data mengenai kegiatan industri manufaktur yang ada di Provinsi Daerah Istimewa Yogyakarta. Kami mengucapkan terima kasih dan penghargaan yang sebesar-besarnya kepada semua pihak, khususnya kepada perusahaan industri yang telah bersedia mengisi kuesioner sehingga publikasi ini dapat diterbitkan. Kritik dan saran yang bersifat konstruktif sangat diharapkan untuk perbaikan publikasi ini di masa mendatang.

Yogyakarta, Desember 2024
Kepala Badan Pusat Statistik
Provinsi Daerah Istimewa Yogyakarta

Herum Fajarwati

PREFACE

The Publication of Large and Medium Industrial Statistics of Daerah Istimewa Yogyakarta Province 2022 is a continuous publication published by Statistics of Daerah Istimewa Yogyakarta Province every year. This publication uses Klasifikasi Baku Lapangan Usaha Indonesia (KBLI) 2020 refer to the International Standard Industrial Classification of All Economic Activities (ISIC) Rev 4. The data presented in this publication are the result of The 2022 Annual Survey of Manufacturing Industry of Medium and Large Scale collected during 2023.

The Publication of Large and Medium Industrial Statistics presents the data of industrial companies in Daerah Istimewa Yogyakarta Province including the number of companies, the number and composition of workers, expenses for workers, electricity and fuel used, input costs, output values, added value, and the sale and purchase value of fixed capital goods.

The publishing of this yearbook is expected to complete the information for data users on industrial activities in Daerah Istimewa Yogyakarta Province. On this occasion we would like to express our deepest gratitude and appreciation to all parties, especially to industrial companies who have been willing to fill out the questionnaire so that this publication can be published. Constructive criticism and suggestions are expected to improve in future publication.

*Yogyakarta, December 2024
Head of BPS-Statistics
Daerah Istimewa Yogyakarta Province*

Herum Fajarwati

DAFTAR ISI

CONTENTS

Statistik Industri Besar dan Sedang Daerah Istimewa Yogyakarta 2022
Large and Medium Industrial Statistics of Daerah Istimewa Yogyakarta 2022
 Volume 13, 2024

Kata Pengantar/Preface	v
Daftar Isi/Contens	vii
Daftar Tabel/List of Tables	ix
Daftar Gambar/List of Figures	xiii
BAB 1. Penjelasan Umum/General Description	1
1.1 Pendahuluan/Introduction.....	3
1.2 Ruang Lingkup/Coverage.....	4
1.3 Penggunaan Klasifikasi Industri/Use of Industrial Classification.....	5
1.4 Metode Pengumpulan Data/Method of Data Collection	6
1.5 Konsep dan Definisi/Concepts and Definitions.....	6
1.6 Metode Estimasi/Estimation Method.....	11
1.7 Keterbandingan/Comparability.....	12
BAB 2. Ulasan Singkat/Brief Reviews	15
2.1 Jumlah Perusahaan/Number of Companies.....	17
2.2 Jumlah Tenaga Kerja/ Number of Workers.....	18
2.3 Tingkat Upah/Wage Rate.....	20
2.4 Pemakaian Bahan Bakar/Fuel Consumption.....	22
2.5 Nilai Tambah/Value Added.....	24
Tabel-Tabel/Tables	24
Daftar Pustaka/References	101

DAFTAR TABEL

LIST of TABLES

Tabel/ Table		Halaman/ Page
1.1	Jumlah Perusahaan dan Banyaknya Pekerja Menurut Skala Usaha dan Klasifikasi Industri di Daerah Istimewa Yogyakarta, 2022..... <i>Number of Companies and Workers by Industrial Classification and Facility Status in Daerah Istimewa Yogyakarta Province, 2022</i>	29
1.2	Jumlah Perusahaan dan Banyaknya Pekerja Menurut Skala Usaha dan Kabupaten/Kota di Provinsi Daerah Istimewa Yogyakarta, 2022..... <i>Number of Companies and Workers by Regency/Municipality and Facility Status in Daerah Istimewa Yogyakarta Province, 2022</i>	30
2.1	Jumlah Jumlah Perusahaan menurut Kepemilikan Modal dan Kode Industri di Provinsi Daerah Istimewa Yogyakarta, 2022..... <i>Number of Establishment under ownership of capital and Industrial Code, 2022</i>	31
2.2	Jumlah Jumlah Perusahaan Menurut Kepemilikan Modal dan Kabupaten/Kota di Provinsi Daerah Istimewa Yogyakarta, 2022..... <i>Number of Establishment under ownership of capital and Regency/Municipality in Daerah Istimewa Yogyakarta Province, 2022</i>	39
3.1	Jumlah Perusahaan dan Jenis Tenaga Kerja Menurut Klasifikasi Industri di Provinsi Daerah Istimewa Yogyakarta, 2022..... <i>Number of Establishments and type of workers by Industrial Classification in Daerah Istimewa Yogyakarta Province, 2022</i>	43
3.2	Jumlah Perusahaan dan Jenis Tenaga Kerja Menurut Kabupaten/Kota di Provinsi Daerah Istimewa Yogyakarta, 2022..... <i>Number of Establishments and type of workers by Regency/Municipality in Daerah Istimewa Yogyakarta Province, 2022</i>	47
4.1	Jumlah Pengeluaran untuk Pekerja Menurut Klasifikasi Industri dan Jenis Pengeluaran di Provinsi Daerah Istimewa Yogyakarta (ribu rupiah), 2022..... <i>Expenditure on Workers by Industrial Code and Type of Expenditure in Daerah Istimewa Yogyakarta Province (thousand rupiah), 2022</i>	49
4.2	Pengeluaran untuk Pekerja Menurut Kabupaten/Kota dan Jenis Pengeluaran di Provinsi Daerah Istimewa Yogyakarta (ribu rupiah), 2022..... <i>Expenditures on Workers by Regency/Municipality and Type of Expenditures in Daerah Istimewa Yogyakarta Province (thousand rupiah), 2022</i>	53
5.1	Tenaga Listrik yang Dibangkitkan, Dibeli dan Dijual Oleh Perusahaan Menurut Klasifikasi Industri di Provinsi Daerah Istimewa Yogyakarta, 2022..... <i>Electricity Generated, Produced, Purchased and Sold by Industrial Classification in Daerah Istimewa Yogyakarta Province, 2022</i>	55

5.2	Tenaga Listrik yang Dibangkitkan, Dibeli dan Dijual Oleh Perusahaan Menurut Kabupaten/Kotadi Provinsi Daerah Istimewa Yogyakarta, 2022 <i>Electricity Generated, Produced, Purchased and Sold by Regency/Municipality in Daerah Istimewa Yogyakarta Province, 2022</i>	57
6.1	Banyaknya Pemakaian Bahan Bakar dan Pelumas Menurut Klasifikasi Industri di Provinsi Daerah Istimewa Yogyakarta, 2022..... <i>The Number of Fuel and Lubricants Used by Industrial Classification in Daerah Istimewa Yogyakarta, 2022</i>	58
6.2	Banyaknya Pemakaian Bahan Bakar dan Pelumas Menurut Kabupaten/Kota di Provinsi Daerah Istimewa Yogyakarta, 2022..... <i>The Number of Fuel and Lubricants Used by Regency/Municipality in Daerah Istimewa Yogyakarta Province, 2022</i>	62
6.3	Nilai Pemakaian Bahan Bakar dan Pelumas Menurut Klasifikasi Industri di Provinsi Daerah Istimewa Yogyakarta, 2022..... <i>Value of Fuel and Lubricants Used by Industrial Classification in Daerah Istimewa Yogyakarta Province, 2022</i>	64
6.4	Nilai Pemakaian Bahan Bakar dan Pelumas Menurut Kabupaten/Kota di Provinsi Daerah Istimewa Yogyakarta, 2022..... <i>Value of Fuel and Lubricants Used by Regency/Municipality in Daerah Istimewa Yogyakarta Province, 2022</i>	68
7.1	Biaya Input Menurut Klasifikasi Industri di Provinsi Daerah Istimewa Yogyakarta, 2022..... <i>Input Values by Industrial Classification in Daerah Istimewa Yogyakarta Province, 2022</i>	70
7.2	Biaya Input Menurut Kabupaten/Kota di Provinsi Daerah Istimewa Yogyakarta, 2022..... <i>Input Cost by Regency/Municipality in Daerah Istimewa Yogyakarta Province, 2022</i>	74
8.1	Nilai Output Menurut Klasifikasi Industri di Provinsi Daerah Istimewa Yogyakarta, 2022..... <i>Output Values by Industrial Classification in Daerah Istimewa Yogyakarta Province, 2022</i>	76
8.2	Nilai Output Menurut Kabupaten/Kota di Provinsi Daerah Istimewa Yogyakarta, 2022..... <i>Output Values by Regency/Municipality in Daerah Istimewa Yogyakarta Province, 2022</i>	80
9.1	Nilai Tambah Menurut Klasifikasi Industri di Provinsi Daerah Istimewa Yogyakarta, 2022..... <i>Value Added by Industrial Classification in Daerah Istimewa Yogyakarta Province, 2022</i>	82
9.2	Nilai Tambah Menurut Kabupaten/Kota di Provinsi Daerah Istimewa Yogyakarta, 2022..... <i>Value Added by Regency/Municipality in Daerah Istimewa Yogyakarta Province, 2022</i>	84
10.1	Nilai Pembelian/Penambahan, Pembuatan/Perbaikan Barang Modal Tetap Menurut Klasifikasi Industri di Provinsi Daerah Istimewa Yogyakarta, 2022..... <i>Value of Purchase/Increase, Construction/Major Repairment of Fixed Capital Used by Industrial Classification in Daerah Istimewa Yogyakarta Province, 2022</i>	85

10.2	Nilai Pembelian/Penambahan, Pembuatan/Perbaikan Barang Modal Tetap Menurut Kabupaten/Kota di Provinsi Daerah Istimewa Yogyakarta, 2022..... <i>Value of Purchase/Increase, Construction/Major Repairment of Fixed Capital Used by Regency/Municipality in Daerah Istimewa Yogyakarta Province, 2022</i>	89
10.3	Nilai Penjualan/Pengurangan Barang Modal Tetap Menurut Klasifikasi Industri di Provinsi Daerah Istimewa Yogyakarta, 2022..... <i>Value of Sale/Reduction of Fixed Capital Used by Industrial Classification in Daerah Istimewa Yogyakarta Province, 2022</i>	91
10.4	Nilai Penjualan/Pengurangan Barang Modal Tetap Menurut Kabupaten/Kota di Provinsi Daerah Istimewa Yogyakarta, 2022..... <i>Value of Sale/Reduction of Fixed Capital Used by Regency/Municipality in Daerah Istimewa Yogyakarta Province, 2022</i>	95
11.1	Jumlah Perusahaan menurut Status Penanaman Modal dan Klasifikasi Industri di Provinsi Daerah Istimewa Yogyakarta, 2022..... <i>Number of Establishment by Investment Facility Status and by Industrial Classification in Daerah Istimewa Yogyakarta Province, 2022</i>	97
11.2	Jumlah Perusahaan menurut Status Penanaman Modal dan Kabupaten/Kota di Provinsi Daerah Istimewa Yogyakarta, 2022..... <i>Number of Establishment by Investment Facility Status and by Regency/Municipality in Daerah Istimewa Yogyakarta Province, 2022</i>	99

<https://yogyakarta.bppt.go.id>

<https://yogyakarta.bps.go.id>

DAFTAR GAMBAR

LIST of FIGURES

		Halaman Page
Gambar 1.	Jumlah Perusahaan Menurut Klasifikasi Industri di Provinsi Daerah Istimewa Yogyakarta ,2022.....	17
<i>Figure 1.</i>	<i>Number of Companies by Industrial Classification in Daerah Istimewa Yogyakarta Province, 2022</i>	
Gambar 2.	Komposisi Tenaga Kerja Menurut Klasifikasi Industri di Provinsi Daerah Istimewa Yogyakarta, 2022.....	19
<i>Figure 2.</i>	<i>Workers Composition by Industrial Classification in Daerah Istimewa Yogyakarta Province, 2022</i>	
Gambar 3.	Komposisi Tenaga Kerja Menurut Jenis Tenaga Kerja di Provinsi Daerah Istimewa Yogyakarta, 2022.....	20
<i>Figure 3.</i>	<i>Workers Composition by The Type of Workers in Daerah Istimewa Yogyakarta Province, 2022</i>	
Gambar 4.	Tingkat Upah Pekerja Industri per Bulan di Provinsi Daerah Istimewa Yogyakarta (ribu rupiah), 2022.....	21
<i>Figure 4.</i>	<i>Wage Rate of Manufacturing Workers per Month in Daerah Istimewa Yogyakarta Province (thousand rupiah), 2022</i>	
Gambar 5.	Komposisi Pemakaian Bahan Bakar dan Pelumas untuk Industri di Provinsi Daerah Istimewa Yogyakarta, 2022.....	22
<i>Figure 5.</i>	<i>Composition of Fuel and Lubricant Usage for Manufacture in Daerah Istimewa Yogyakarta Province, 2022</i>	
Gambar 6.	Nilai Pemakaian Bahan Bakar Menurut Klasifikasi Industri di Provinsi Daerah Istimewa Yogyakarta (ribu rupiah), 2022.....	23
<i>Figure 6.</i>	<i>Value of Fuel Consumption by Industrial Classification in Daerah Istimewa Yogyakarta Province (thousand rupiah), 2022</i>	
Gambar 7.	Nilai Tambah per Kelompok Industri di Provinsi Daerah Istimewa Yogyakarta (ribu rupiah), 2022.....	25
<i>Figure 7..</i>	<i>Value Added by Industrial Classification in Daerah Istimewa Yogyakarta Province (thousand rupiah), 2022</i>	

BAB 1.

PENJELASAN UMUM
GENERAL DESCRIPTION

1.1 Pendahuluan

Secara umum, data Industri Besar dan Sedang pada tahun 2022 merupakan kelanjutan dari series data yang sama dari tahun-tahun sebelumnya.

Sektor industri khususnya industri besar dan sedang berperan cukup besar dalam penyerapan tenaga kerja, pembentukan nilai tambah dan sumbangan terhadap Produk Domestik Regional Bruto (PDRB). Terutama industri besar, kelompok ini berpeluang membentuk nilai tambah yang besar karena cenderung menggunakan teknologi yang intensif dan padat modal.

Untuk melihat dan mengevaluasi keadaan yang telah dicapai dalam pembangunan sektor industri, BPS Provinsi Daerah Istimewa Yogyakarta secara periodik setiap tahun melaksanakan Survei Tahunan Perusahaan IBS secara lengkap (sensus) dan menyajikan hasilnya dalam bentuk buku publikasi. Publikasi data hasil survei industri yang secara rutin telah diterbitkan oleh BPS Provinsi Daerah Istimewa Yogyakarta adalah:

1. **Buku Direktori Industri Besar dan Sedang**

1.1 Introduction

Generally, the 2021 large and medium manufacturing industry is continuously series data same as the years ago.

Manufacturing sector, especially large and medium scale industry has a significant role to encourage for member of workers absorption and contribution to Gross Regional Domestic Product (GRDP). Mainly large manufacturing scale, they tend to high capital and intensive technology.

In order to monitor the development of industrial sector, BPS-Statistics of Daerah Istimewa Yogyakarta Province needs to conduct survey on Large and Medium Manufacturing Industrial Establishment and presents the result of this survey periodically. The result of industrial survey is presented in 2 (two) publications:

1. **The Large and medium Manufacturing Directory**, consist of name, address, good produced, numbers of workers and contact persons of IBS for regency/city region.

Berisi daftar nama, alamat, jenis produksi utama, jumlah tenaga kerja dan nama penghubung (*contact person*) dari IBS yang dirinci menurut kabupaten/kota.

2. **Buku Statistik Industri Besar dan Sedang**, berisi tabel-tabel agregatif mengenai jumlah perusahaan, status penanaman modal, jumlah tenaga kerja, pengeluaran untuk tenaga kerja, tenaga listrik, bahan bakar yang digunakan, biaya antara, output, nilai tambah dan lain-lain. Buku ini menyajikan data dalam dua digit Klasifikasi Baku Lapangan Usaha Indonesia (KBLI).

1.2. Ruang Lingkup

Perusahaan industri yang dicakup dalam Survei Industri Besar dan Sedang adalah semua perusahaan Industri Besar dan Sedang yang berada di wilayah Daerah Istimewa Yogyakarta termasuk perusahaan industri manufaktur yang baru mulai berproduksi secara komersial pada tahun 2022. Survei ini dilaksanakan secara rutin setiap tahun untuk memperoleh data berkala dan berkesinambungan, yang pelaksanaannya pada bulan Maret sampai dengan Juni. Dalam memperoleh data yang terbaru dan untuk memantau

2. ***The Large and medium Manufacturing Statistics***, consists of aggregate data on the number of establishments, capital status, the number of persons engaged, labor cost, electricity, energy, intermediate cost, output, value added, etc. This book present data in two of Klasifikasi Baku Lapangan Usaha Indonesia (KBLI).

1.2 Coverage

The industrial establishments which are covered in large and medium manufacturing Surveys are all establishment located in Daerah Istimewa Yogyakarta Province. including establishments which started commercial production during 2022. This survey is enumerated annually during March to June to obtain regularly and continuously data. In order to get the latest data and to observe the changes, firstly is updating the directory of large and medium manufacturing establishment during December to February. Enumerators visit

perubahan yang terjadi, terlebih dahulu dilakukan updating tahunan direktori perusahaan pada bulan Desember sampai dengan Februari. Petugas melakukan pengecekan ke perusahaan yang informasinya berasal dari instansi-instansi terkait. Bersamaan dengan kegiatan itu juga dilakukan pencatatan bagi IBS yang ditemui di lapangan.

1.3. Penggunaan Klasifikasi Industri

Klasifikasi industri yang digunakan dalam survei industri manufaktur ini adalah klasifikasi yang berdasar kepada *International Standard Industrial Classification Of All Economic Activities (ISIC) revisi 4*, yang telah disesuaikan dengan kondisi di Indonesia dengan nama Klasifikasi Baku Lapangan Usaha Indonesia Tahun (KBLI) 2020.

Kode Baku lapangan usaha suatu perusahaan industri ditentukan berdasarkan produksi utamanya, yaitu jenis komoditas yang dihasilkan dengan nilai terbesar. Apabila suatu perusahaan industri menghasilkan 2 (dua) jenis komoditas atau lebih dengan nilai yang sama maka produksi utama adalah komoditas yang dihasilkan dengan kuantitas terbesar.

the large and medium-manufacturing establishment based on the information from other institutions about the new manufacturing establishment.

1.3. Use Of Industrial Classification

The classification adopted in this Survey Are The International Standard Industrial Classification Of All Economic Activities (ISIC) Revision 4, modified according to the local conditions in Indonesia (named Klasifikasi Baku Lapangan Usaha Indonesia or KBLI 2020).

The standard business code is determined based on its main production. This is defined as the product with the highest output value (in rupiah) of all items manufactured by the establishment. If an establishment produces two or more products with the sama value, the highest quantity produced will be the main product.

1.4. Metode Pengumpulan Data

Data bersumber dari Survei Tahunan Perusahaan Industri Manufaktur dengan cara memberikan daftar pertanyaan (questionnaire) kepada semua responden yang tercatat pada Direktori Perusahaan Industri Manufaktur Skala Menengah Besar di Indonesia. Pengumpulan data merupakan pendataan lengkap.

1.5 Konsep dan Definisi

Industri Manufaktur adalah suatu kegiatan ekonomi yang melakukan kegiatan mengubah suatu barang dasar secara mekanis, kimia, atau dengan tangan sehingga menjadi barang jadi atau setengah jadi dan atau barang yang kurang nilainya menjadi barang yang lebih tinggi nilainya, dan sifatnya lebih dekat kepada pemakai akhir. Termasuk dalam kegiatan ini adalah jasa industri/maklun dan pekerjaan perakitan.

Jasa Industri Manufaktur adalah kegiatan industri yang melayani keperluan pihak lain. Pada kegiatan ini bahan baku disediakan oleh pihak lain sedangkan pihak pengolah hanya melakukan pengolahannya dengan mendapat imbalan sejumlah uang atau barang sebagai balas jasa (upah maklun).

1.4 Method Of Data Collection

This data is sourced from the Annual Survey of Manufacturing Industry by delivering questionnaires to all respondents who are registered in the Directory of Medium and Large Scale Manufacturing Industry in Indonesia. The data collection is complete enumeration

1.5 Concepts and Definitions

***Manufacturing industry** is defined as an economic activity involving processing materials and transforming them mechanically, chemically, or manually into finished or semi finished products and/or converting them into other goods having higher value and closer to the final user. This activity includes services for manufacturing and assembling.*

***Manufacturing services** are defined as manufacturing activities that serve others. In conducting such activities, materials are supplied by others, while establishments engaged in the service activity only process and obtain payments for those activities as compensation.*

Perusahaan atau Usaha Industri

adalah suatu unit (kesatuan) usaha yang melakukan kegiatan ekonomi, bertujuan menghasilkan barang atau jasa, terletak pada suatu bangunan atau lokasi tertentu, dan mempunyai catatan administrasi tersendiri mengenai produksi dan struktur biaya serta ada seorang atau lebih yang bertanggung jawab atas usaha tersebut. Skala Industri Menengah dan Besar ditentukan berdasarkan kriteria:

- a. Jumlah tenaga kerja
- b. Besaran nilai akumulasi investasi
- c. Omset
- d. Khusus di industri penggilingan padi menggunakan skala mesin.

Industri Sedang adalah perusahaan industri manufaktur yang memenuhi salah satu kriteria jumlah tenaga kerja kurang dari 99 orang atau nilai akumulasi investasi/modal tetap (di luar tanah dan bangunan) sejak pendirian pabrik hingga 31 Desember 2022 lebih dari Rp. 5 miliar dan kurang dari atau sama dengan Rp. 10 miliar atau omset perusahaan tahun 2022 lebih dari Rp. 10 miliar dan kurang dari atau sama dengan Rp. 50 miliar.

Industri besar adalah perusahaan industri manufaktur yang memenuhi

Industrial establishment is defined as a production unit engaging in economic activity produces goods or services, located in a building or in a certain location and has administration record about production and structure cost, and has a person or more that have responsibility for those activities. Medium and Large Industrial Scale is determined based on the following criteria:

- a. Total workers
- b. Investment Accumulation
- c. Sales

Machine scale (specially in rice milling industry)

Medium Industries is a manufacturing company that employs less than 99 workers or has an investment accumulation/fixed capital (exclude land and building) since its establishment until 31 December 2022 more than Rp. 5 billion and less than Rp. 10 billion or its sales in 2022 are greater than Rp. 10 billion and less than Rp. 50 billion rupiahs.

Large Industries is a manufacturing company that employs more than 99 workers or has an accumulated investment/fixed capital (exclude land

salah satu kriteria jumlah tenaga kerja lebih 99 orang atau nilai akumulasi 31 Desember 2022 lebih besar dari Rp 10 miliar atau omset perusahaan tahun 2022 lebih besar dari Rp 50 miliar.

Khusus untuk industri penggilingan padi, skala dalam industri penggilingan padi sebagai berikut:

Industri penggilingan padi besar: Penggilingan padi dengan kapasitas produksi beras lebih dari 3 ton/jam.

Industri penggilingan padi sedang: Penggilingan padi dengan kapasitas produksi beras antara 1,5 ton/jam sampai dengan 3 ton/jam.

Khusus untuk perusahaan-perusahaan yang berasal dari data registrasi yang sudah tercatat dalam Direktori IBS dan ditemukan aktif, namun memiliki jumlah tenaga kerja kurang dari 20 orang atau nilai akumulasi investasi/modal tetap (di luar tanah dan bangunan) sejak pendirian pabrik hingga 31 Desember 2022 kurang dari Rp 5 miliar atau omset perusahaan tahun 2022 kurang dari Rp 15 miliar tetap dikelompokkan ke dalam kategori industri menengah.

Output adalah nilai keluaran dari proses industri yang berupa barang yang dihasilkan, tenaga listrik yang dijual, jasa industri, selisih nilai stok barang setengah jadi, dan penerimaan lainnya.

and building) since its establishment until 31 December 2022, greater than Rp. 10 billion, or its sales in 2022 are greater than Rp. 50 billion.

Specifically, for the rice milling industry, the scale is as follows:

Large rice milling manufacturers: *rice mills with a rice production capacity of more than 3 tons per hour.*

Medium rice milling manufacturers: *rice mills with a rice production capacity of between 1.5 tons per hour and 3 tons per hour.*

Particularly for companies that are derived from the registration data which are already recorded in the IBS Directory and found active, but its workers are less than 20 people or its investment accumulation/fixed capital (exclude land and building) since its establishment until 31 December 2022 is less than Rp. 5 billion, or its sales in 2022 is under Rp. 15 billion remains categorized as medium scale industries.

Output *is defined as total values of all processed goods which include production electricity sold, industrial services, profits, and change in stocks and others income.*

Biaya Antara adalah biaya antara dalam proses industri yang berupa bahan baku, bahan bakar, barang lainnya di luar bahan baku/bahan penolong, sewa gedung, dan lainnya.

Balas Jasa Tenaga Kerja adalah semua pembayaran yang diterima tenaga kerja/karyawan dalam bentuk uang maupun barang, iuran dana jaminan sosial, dana kesejahteraan pegawai, iuran dana pensiun, tunjangan keluarga, asuransi kesehatan dan sejenisnya.

Nilai Tambah Bruto adalah nilai output perusahaan dikurangi biaya antara.

Produktivitas adalah besarnya nilai output dibagi banyaknya tenaga kerja.

Tingkat Efisiensi adalah rasio input/biaya antara terhadap output.

Klasifikasi Baku Lapangan Usaha Indonesia (KBLI) adalah klasifikasi baku statistik mengenai kegiatan ekonomi yang terdapat di D.I. Yogyakarta. KBLI hanya mengelompokkan unit produksi menurut kegiatan ekonomi, tidak membedakan unit produksi menurut kepemilikan, jenis badan hukum, formal atau informal. KBLI yang digunakan dalam survei ini adalah KBLI sesuai Perka BPS Nomor 2 Tahun 2020 dengan rincian sebagai berikut:

***Intermediate Cost** is defined as intermediate cost of the manufacturing, which consist of raw materials and supporting materials, electricity, building rent, etc.*

***Employment Cost** is defined as compensation for workers in term of money and goods. Employment cost covers wage and salary, overtime pay, bonus in cast and goods, pension fund, social allowance, accident allowance, etc.*

***Gross Value Added** is obtained by output value minus intermediate cost.*

***Productivity** is defined as the ratio of output value to the number of workers*

***Efficiency** is defined as the ratio of input/intermediate cost to output value.*

***Standard Classification of Indonesia Business Field (KBLI)** is statistical classification of economic activity, does not differentiate production units according to ownership, type of legal entity, formal or informal. The KBLI used in this survey is KBLI according to Perka BPS Number 2 of 2020 with the following details:*

KBLI 10. Industri Makanan
 KBLI 11. Industri Minuman
 KBLI 12. Industri Pengolahan Tembakau
 KBLI 13. Industri Tekstil
 KBLI 14. Industri Pakaian Jadi
 KBLI 15. Industri Kulit, Barang dari Kulit dan Alas Kaki
 KBLI 16. Industri Kayu, Barang dari Kayu dan Gabus (tidak termasuk furnitur), Barang Anyaman dari Rotan, Bambu dan sejenisnya
 KBLI 17. Industri Kertas dan Barang dari Kertas
 KBLI 18. Industri Percetakan dan Reproduksi Media Rekaman
 KBLI 20. Industri Bahan Kimia dan Barang dari Bahan Kimia
 KBLI 21. Industri Farmasi, Produk Obat Kimia dan Obat Tradisional
 KBLI 22. Industri Karet, Barang dari Karet dan Plastik
 KBLI 23. Industri Barang Galian Bukan Logam
 KBLI 24. Industri Logam Dasar
 KBLI 25. Industri Barang Logam bukan Mesin dan Peralatannya
 KBLI 26. Industri Komputer, Barang Elektronik dan Optik
 KBLI 27. Industri Peralatan Listrik
 KBLI 28. Industri Mesin dan Perlengkapan YTDL (yang tidak termasuk lainnya)
 KBLI 29. Industri Kendaraan Bermotor, Trailer dan Semi Trailer
 KBLI 30. Industri Alat Angkut Lainnya
 KBLI 31. Industri Furnitur
 KBLI 32. Industri Pengolahan Lainnya
 KBLI 33. Jasa Reparasi dan Pemasangan Mesin dan Peralatan

*KBLI 10. Manufacture of food products
 KBLI 11. Manufacture of beverages
 KBLI 12. Manufacture of tobacco products
 KBLI 13. Manufacture of textiles
 KBLI 14. Manufacture of wearing apparel
 KBLI 15. Manufacture of leather, leather goods, and footwear
 KBLI 16. Manufacture of wood and of products of wood and cork, except furniture; Manufacture of articles of straw and plaiting materials
 KBLI 17. Manufacture of paper and paper products
 KBLI 18. Manufacture of printing and reproduction of recorded media
 KBLI 20. Manufacture of chemicals and chemical products
 KBLI 21. Manufacture of pharmaceuticals, medicinal chemical and botanical products
 KBLI 22. Manufacture of rubber, rubber and plastics products
 KBLI 23. Manufacture of other non metallic mineral products
 KBLI 24. Manufacture of basic metals
 KBLI 25. Manufacture of fabricated metal products, except machinery and equipment
 KBLI 26. Manufacture of computer, electronic and optical products
 KBLI 27. Manufacture of electrical equipment
 KBLI 28. Manufacture of machinery and equipment n.e.c., product sample: coffee grinder and rice threshing machine
 KBLI 29. Manufacture of motor vehicles, trailers and semi-trailers
 KBLI 30. Manufacture of other transport equipment
 KBLI 31. Manufacture Of furniture
 KBLI 32. Other manufacturing
 KBLI 33. Repair and installation of machinery and equipment*

1.6 Metode Estimasi

Dalam survei tahunan perusahaan Industri Besar dan Sedang, pemasukan dokumen untuk diolah tidak pernah mencapai 100 persen. Pada survei tahun 2018, tingkat pemasukan dokumen cukup rendah yaitu sebesar 58,90 persen. Sedangkan pada tahun 2019, tingkat pemasukan dokumen menurun menjadi 56,90 persen. Tahun 2020 meningkat sebesar 61,93 sedangkan tahun 2021 menurun menjadi 57,15. Oleh karena metode pengumpulan data yang digunakan adalah pencacahan lengkap (sensus), maka dilakukan estimasi terhadap perusahaan-perusahaan yang tidak masuk dokumennya.

Secara umum ada dua kategori perusahaan non-respon, yaitu perusahaan lama dan perusahaan baru. Perusahaan lama non respon artinya perusahaan yang data tahun sebelumnya sudah ada tetapi non respon pada tahun ini. Sedangkan perusahaan baru non respon adalah perusahaan yang baru disurvei tahun ini (2022) dan nama serta alamatnya telah diperoleh, tetapi non-respon.

1.6 Estimation Method

In the annual survey of large and medium industrial companies, submission of documents for processing never reaches 100 percent. In the 2018 survey, the document submission rate was quite low at 58.90 percent. Whereas in 2019, the document submission rate decreased to 56.90 percent. In 2020 increased to 61.93 meanwhile in 2021 increased to 57.15. Because the data collection method used was a complete enumeration (census), estimates were made for companies whose documents were not included.

In general there are two types of non-response : non response exist and non response new. The first includes establishments which responded in the previous year but did not respond in the current year (2022), and the second includes establishments listed in the current year for the first time which did not respond.

Estimasi perusahaan lama non respon dilakukan terhadap seluruh variabel yang datanya respon pada tahun sebelumnya. Metoda estimasi untuk kelompok perusahaan ini dilakukan dengan menggunakan informasi yang diperoleh dari pertumbuhan (*growth*) produktivitas (nilai tambah per tenaga kerja), sedangkan variabel lainnya dilakukan estimasi dengan memperhatikan rasio antar variabel perusahaan yang respon. Sedangkan estimasi perusahaan baru non respon dilakukan dengan cara imputasi data dari perusahaan lain dengan menggunakan rasio dari perusahaan yang respon yang sama kode KLBI 5 digitnya atau 3 digitnya.

1.7. Keterbandingan

Keterbandingan data tahun 2022 dengan data tahun sebelumnya sangat dipengaruhi oleh kelengkapan kerangka sampel, yaitu Direktori Perusahaan Industri Manufaktur Skala Menengah dan Besar. Direktori ini dimutakhirkan setiap tahun dan dilakukan dalam 2 tahap. Tahap pertama, petugas BPS mencari dan mencocokkan daftar nama dan alamat perusahaan yang diperoleh dari instansi lain dengan Direktori tahun sebelumnya.

Estimation of non-response old companies was carried out on all variables whose data were responsive in the previous year. Estimation of variable for the first category of establishment non-response was done by using information obtained from the growth productivity (value added per labour). Other variables were estimated using the ratio relative to output obtained from respondents in the same ISIC. Estimation of variables for the second category of non-respondents was done by using ratio from respond establishment in the same 5-digit ISIC or 3-digit ISIC.

1.7 Comparability

Comparability of the 2022 data with those of previous years was affected by the completeness of the survey frame, which is referred to as the Directory of Medium and Large Scale Manufacturing Industry or simply the "Directory". Firstly, BPS officer matched other agencies' lists with the previous Directory.

Perusahaan yang tidak tercantum dalam direktori dilakukan pengecekan lapangan untuk menentukan apakah bisa dimasukkan ke dalam Direktori atau tidak. Tahap kedua, pegawai BPS harus menyampaikan laporan singkat secara tertulis mengenai perusahaan yang tidak mengisi daftar isian Survei Tahunan Perusahaan Industri Manufaktur yang menyatakan perusahaan tersebut masih aktif atau tidak.

If non-matched establishments were found, BPS officer had to go to the field and determine whether those establishments should be added to the Directory or not. Secondly, BPS officer had to submit briefing reports on all establishments that did not fill out The Annual Survey questionnaire, and to state whether the establishment was still active or not.

<https://yogyakarta.bps.go.id>

BAB 2.

ULASAN SINGKAT
BRIEF REVIEWS

Gambaran perekonomian kelompok industri manufaktur menengah dan besar di Provinsi Daerah Istimewa Yogyakarta pada tahun 2022 dapat dijelaskan sebagai berikut :

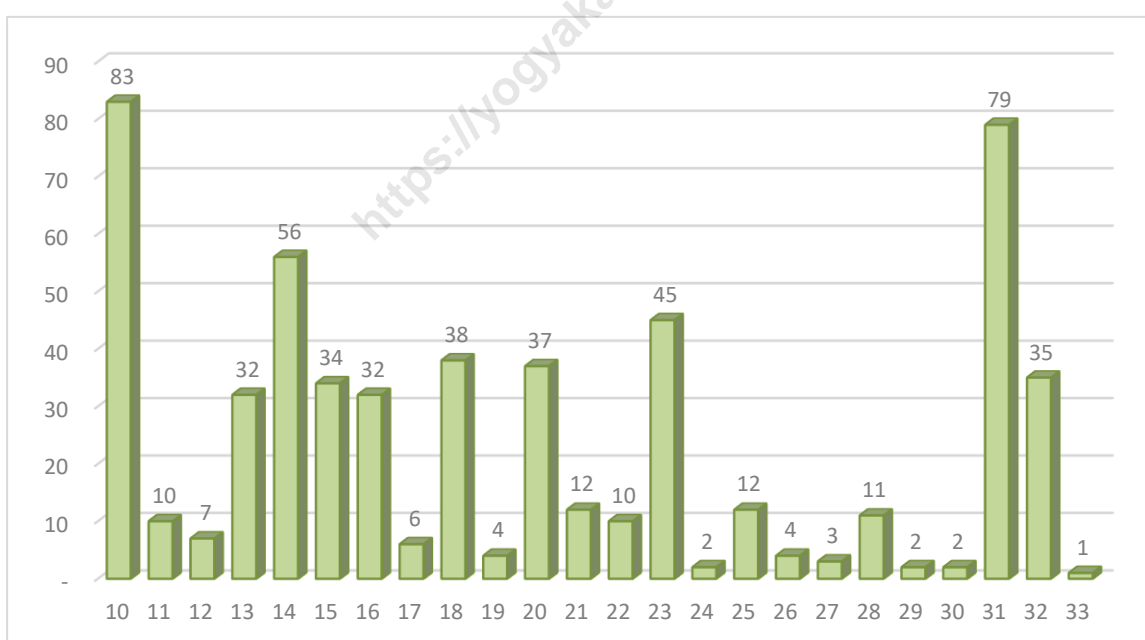
The economic description of medium and large manufacturing industry sectors in Daerah Istimewa Yogyakarta Province in 2022 can be explained as follows:

2.1 Jumlah Perusahaan

Jumlah perusahaan industri manufaktur skala menengah dan besar pada tahun 2022 ada sebanyak 557 perusahaan. Jumlah tersebut terdiri dari 24 kategori industri yang didominasi oleh industri makanan, industri furniture, dan industri pakaian jadi.

2.1 Number of Companies

In 2022, the number of existing medium and large industries was 557 companies. This number consists of 24 industry categories which are dominated of food products manufacture, furniture manufacture, and wearing apparel manufacture.



Gambar 1. Jumlah Perusahaan Menurut Klasifikasi Industri di Provinsi Daerah Istimewa Yogyakarta, 2022
 Figure 1. Number of Companies by Industrial Classification in Daerah Istimewa Yogyakarta Province, 2022

Industri makanan (KBLI-10) mendominasi jumlah perusahaan industri menengah dan besar sebanyak 83 perusahaan, industri furnitur (KBLI-31) sebanyak 79 perusahaan, dan industri pakaian jadi (KBLI-14) sebanyak 56 perusahaan. Selebihnya sebanyak 339 perusahaan tersebar di 21 kategori industri lainnya.

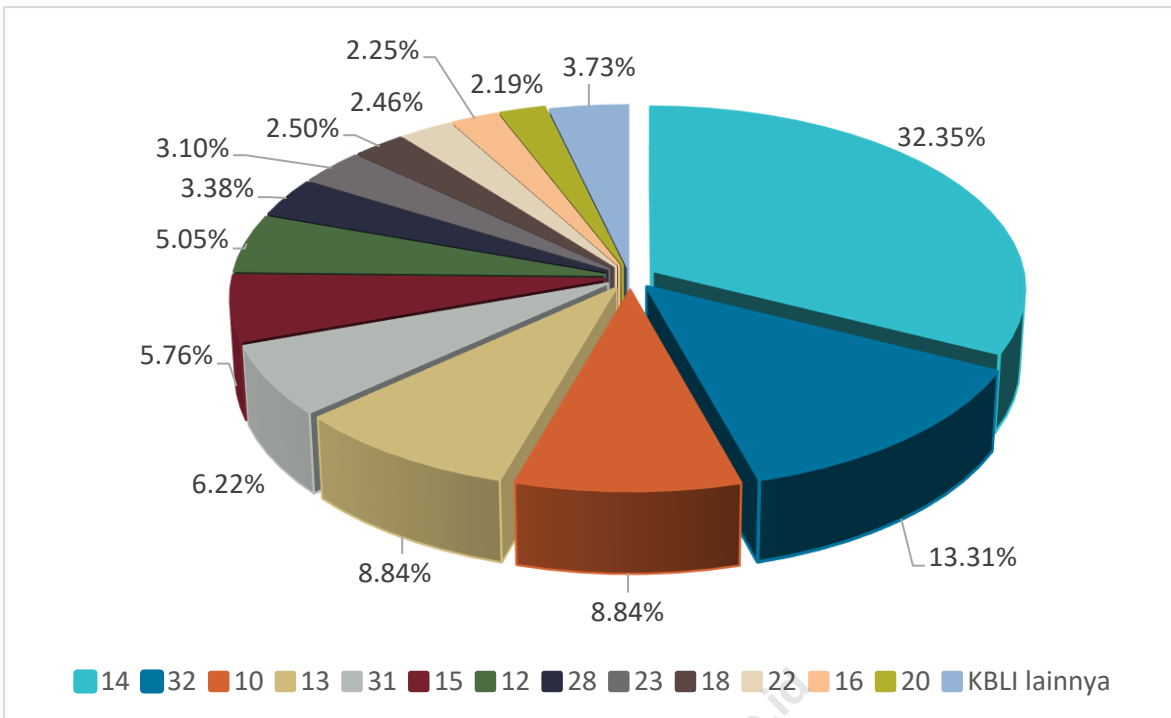
2.2 Jumlah Tenaga Kerja

Pada tahun 2022, dengan jumlah perusahaan sebanyak 557 perusahaan, industri manufaktur dapat menyerap tenaga kerja sebanyak 79.766 orang. Adapun 3 kelompok industri yang mampu menyerap cukup banyak tenaga kerja, antara lain kelompok industri pakaian jadi (KBLI-14) yang mampu menyerap tenaga kerja sebanyak 25.807 orang atau 32,35 persen, kelompok industri pengolahan lainnya (KBLI- 32) yang mampu menyerap tenaga kerja sebanyak 10.616 orang atau 13,31 persen, serta kelompok industri makanan (KBLI-10) dengan tenaga kerja sebanyak 7.054 orang atau 8,84 persen.

The medium and large manufactures were dominated by food products (KBLI-10) about 83 companies, furniture manufacture (KBLI-31) were 79 companies, and wearing apparel manufacture (KBLI-14) were 56 companies. After all, it were 339 companies separated in 21 other medium and large manufactures.

2.2 Number of Workers

In 2022, with 557 manufacturing companies the total number of absorbed workers were 79,766 workers. There are 3 sectors which absorbed many workers, they are: wearing apparel manufacture (KBLI-14) can absorbed 25,807 workers or 32.35 percent other manufacturing (KBLI- 32) that absorbed 10,616 workers or 13.31 percent and food products manufacture (KBLI-10) about 7,045 workers or 8.84 percent.



Gambar 2. Komposisi Tenaga Kerja Menurut Klasifikasi Industri di Provinsi Daerah Istimewa Yogyakarta, 2022

Figure 2. Workers Composition by Industrial Classification in Daerah Istimewa Yogyakarta Province, 2022

Tenaga kerja yang ada di kegiatan industri manufaktur dapat dibedakan atas tenaga kerja produksi dan tenaga kerja lainnya.

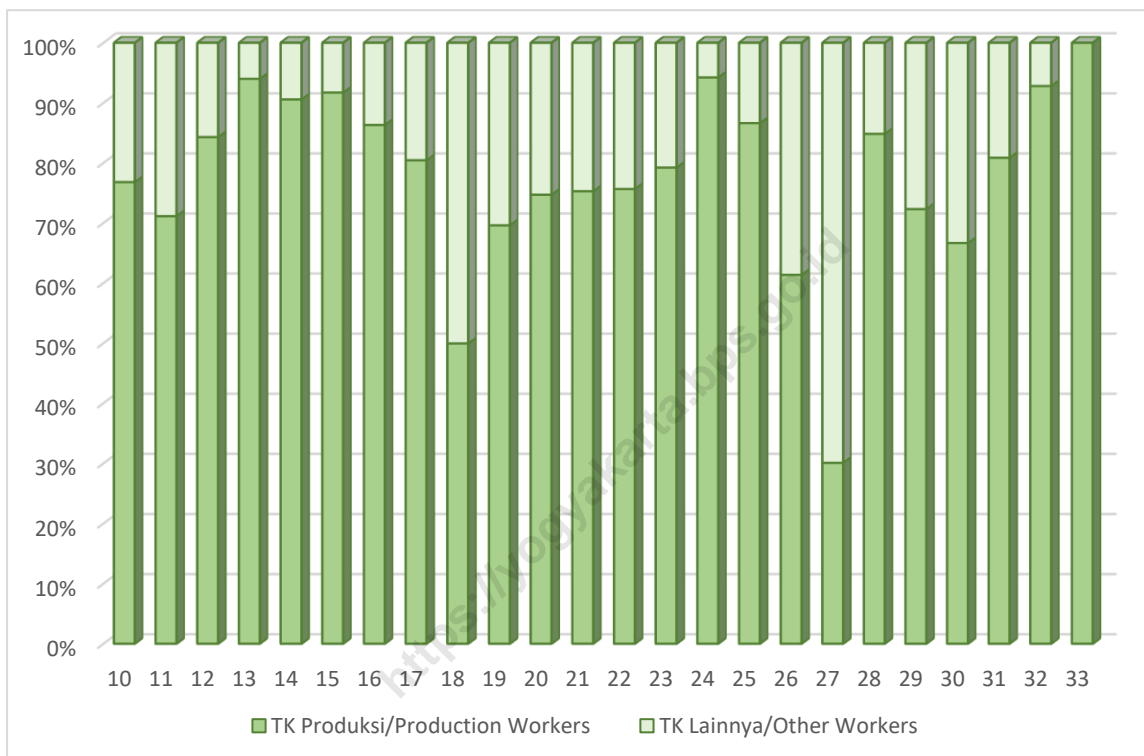
Berdasarkan jenis tenaga kerja tersebut, dapat diketahui kelompok industri mana yang membutuhkan lebih banyak tenaga kerja produksi dibandingkan tenaga kerja lainnya seperti tenaga administrasi, kehumasan dan lainnya. Kelompok industri jasa reparasi dan pemasangan mesin dan peralatan (KBLI-33) adalah kelompok industri dengan komposisi tenaga kerja produksi tertinggi sebesar 100,00 persen. Selanjutnya di posisi Kedua dan ketiga adalah kelompok Industri Logam Dasar (KBLI-24) dan industri

The workers in manufacture could be classified by production workers and other workers.

According to the type of workers, we would know which category needs more production workers than others such as administration staff, public relation and other type of workers. There was repair and installation of machinery and equipment manufacture (KBLI-33) which has the greatest production workers among 100.00 percent. Other basic metals manufacture (KBLI-24) and also textiles manufacture (kbli-13) were the type of industries which absorbed the second and the third highest of production workers for

tekstil (KBLI-13) yaitu masing-masing sebesar 94,23 persen dan 94,00 persen. Sebaliknya kelompok industri peralatan listrik (KBLI-27) merupakan kelompok industri dengan tenaga kerja produksi terendah sebesar 30,09 persen.

94.23 percent and 94.00 percent. Otherwise electrical equipment manufacture (KBLI-27) were the lowest one with 30,09 percent of production workers.



Gambar 3. Komposisi Tenaga Kerja Menurut Jenis Tenaga Kerja di Provinsi Daerah Istimewa Yogyakarta, 2022

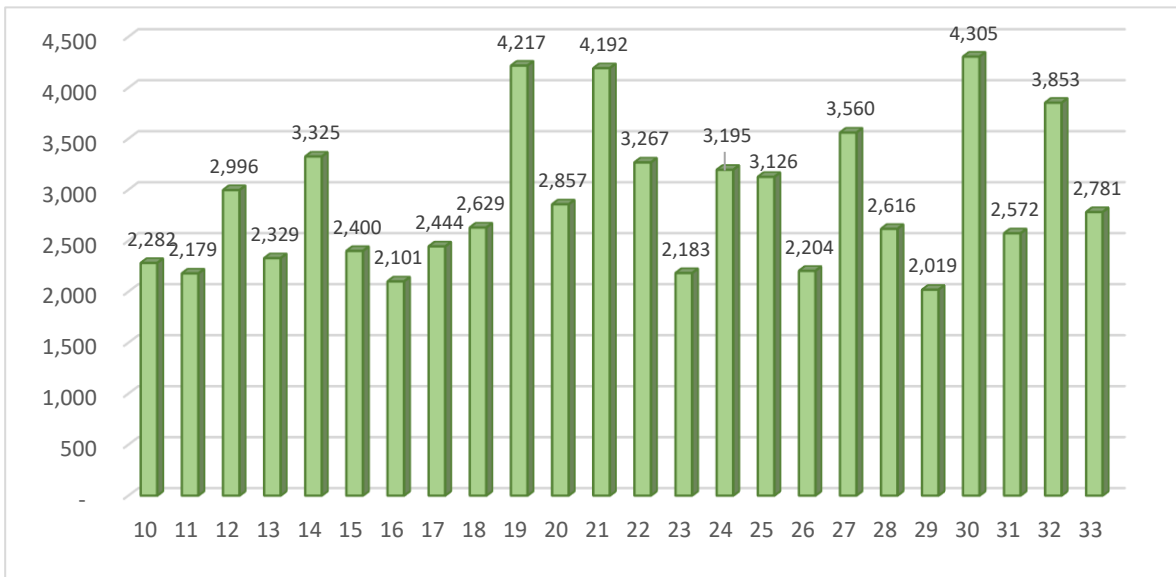
Figure 3. Workers Composition by The Type of Workers in Daerah Istimewa Yogyakarta Province, 2022

2.3 Tingkat Upah

Pada tahun 2022, pengeluaran perusahaan industri menengah dan besar untuk biaya tenaga kerja di Provinsi Daerah Istimewa Yogyakarta mencapai 3,01 triliun rupiah dari 557 perusahaan yang ada.

2.3 Wage Rate

In 2022, the medium and large manufacture expenditures for workers cost in Daerah Istimewa Yogyakarta Province were 3.01 trillion rupiahs from the existing 557 companies.



Gambar 4. Tingkat Upah Pekerja Industri per Bulan di Provinsi Daerah Istimewa Yogyakarta (ribu rupiah), 2022
 Figure 4. Wage Rate of Manufacturing Workers per Month in Daerah Istimewa Yogyakarta Province (thousand rupiah), 2022

Pengeluaran tersebut antara lain terdiri dari upah/gaji, upah lembur, tunjangan sebesar 2,44 triliun rupiah (79,60 persen) dan pengeluaran untuk pekerja/karyawan lainnya sebesar 0,63 triliun rupiah (20,40 persen). Jika ditelusuri tingkat upah per pekerja setiap bulannya, kelompok industri alat angkatan lainnya (KBLI-30) merupakan kelompok industri yang mampu memberikan tingkat upah tertinggi kepada pekerjanya yaitu sebesar 4,31 juta rupiah per bulan. Diikuti oleh kelompok industri produk dari batubara dan pengilangan minyak bumi (KBLI-19) dan industri farmasi, produk obat kimia dan obat tradisional (KBLI-21) dengan tingkat upah masing-masing sebesar 4,22 juta rupiah dan 4,19 juta rupiah per bulannya. Sebaliknya

Those expenditures include wages/salary, overtime wages, allowances is 2.44 trillion rupiahs (79.60 percent) and others expenditure for workers is 0.63 trillion rupiahs (20.40 percent). The highest wage rate for the manufacture workers were from other transport equipment manufacture (KBLI-30) that reach 4.31 million rupiahs per workers per month. Followed by coal and petroleum refining manufacture (KBLI-19) and pharmacy, chemical and traditional medicines manufacture (KBLI-21) that reach 4.22 million and 4.19 million rupiahs per workers per month. Otherwise, the lowest wage rate for the manufacture workers were from motor vehicles, trailer and semi trailer manufacture (KBLI-29) above 2.02 million

kelompok industri dengan tingkat upah terendah per bulan adalah industri kendaraan bermotor, trailer dan semi trailer (KBLI-29) sebesar 2,02 juta rupiah.

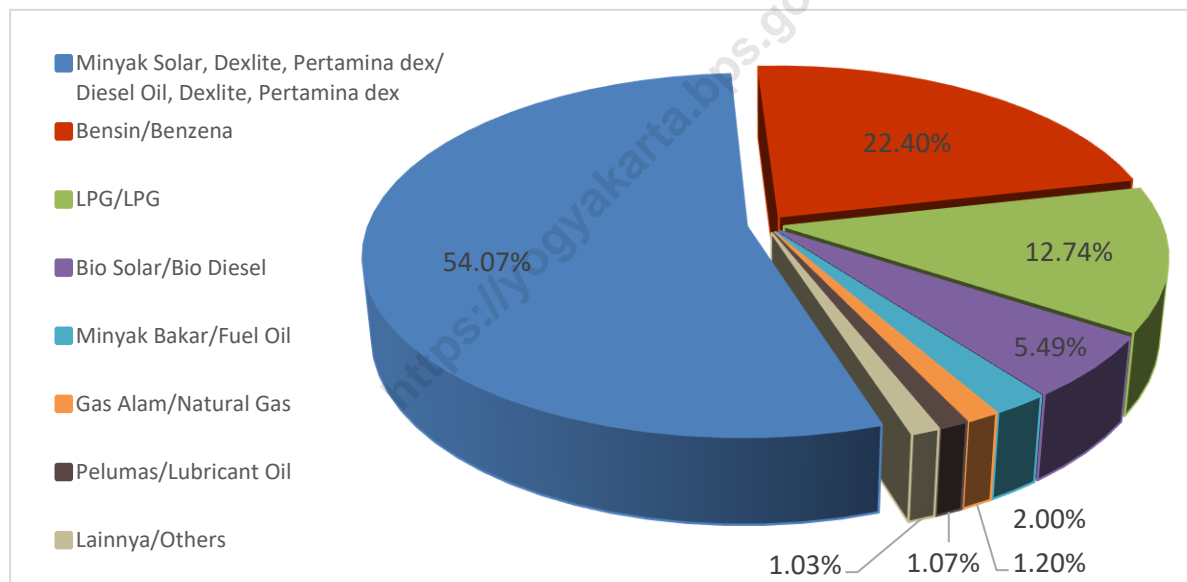
rupiah per employes per month.

2.4 Pemakaian Bahan Bakar

2.4 Fuel Consumption

Selama tahun 2022, secara umum bahan bakar yang digunakan pada industri manufaktur menengah dan besar yaitu bensin, solar, biosolar, gas alam, minyak bakar, LPG, pelumas, dan bahan bakar lainnya.

During 2022 the general fuel used by large and medium industry was benzene, diesel oil, bio diesel, natural gas, fuel oil, LPG, Lubricant Oil and other fuels.



Gambar 5. Komposisi Pemakaian Bahan Bakar dan Pelumas untuk Industri di Provinsi Daerah Istimewa Yogyakarta, 2022

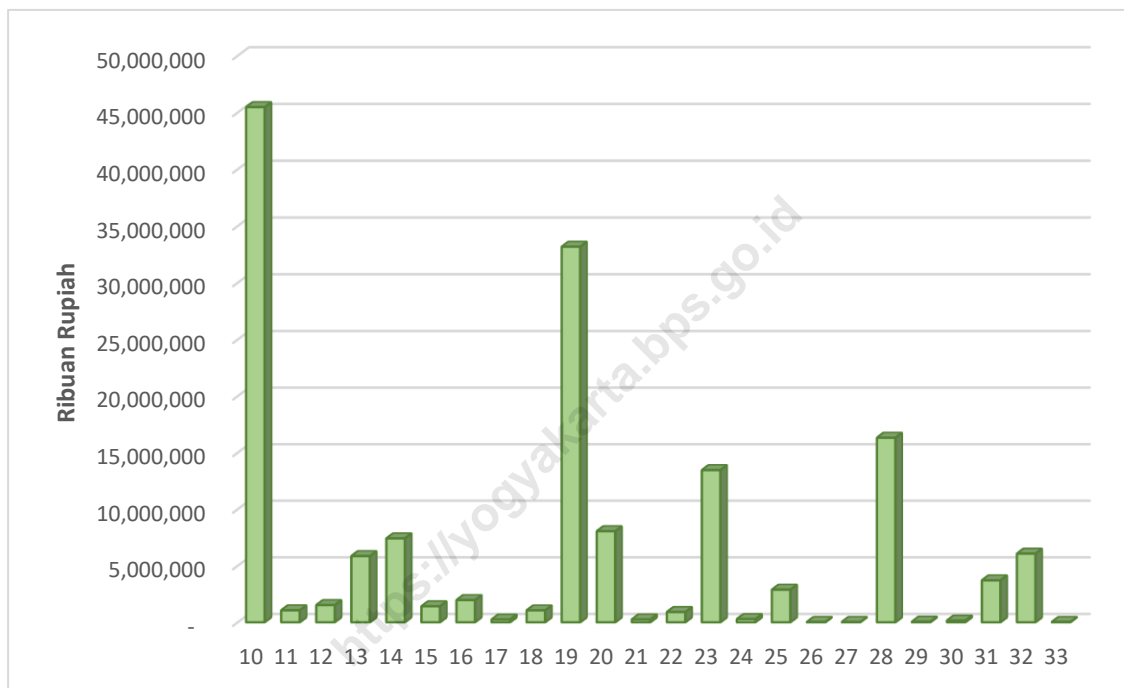
Figure 5. Composition of Fuel and Lubricant Usage for Manufacture in Daerah Istimewa Yogyakarta Province, 2022

Penggunaan bahan bakar dan pelumas oleh perusahaan industri menengah dan besar di Provinsi Daerah Istimewa Yogyakarta selama tahun 2022 mencapai 151,28 milyar

The used of fuel by medium and and large manufacture companies in Daerah Istimewa Yogyakarta Province during 2022 reached 151.28 billion rupiahs. The most used fuel

rupiah. Bahan bakar yang paling banyak digunakan selama tahun 2022 adalah minyak solar dengan nilai 58,10 milyar rupiah atau sebesar 38,41 persen, diikuti oleh bensin dan LPG masing-masing sebesar 22,88 miliar rupiah (15,12 persen) dan 18,52 miliar rupiah (12,24 persen).

during 2022 were diesel oil, worth by 58.10 billion rupiahs (38.41 percent), followed by benzene that reach 22.88 billion rupiahs (15.12 percent) and LPG reach 18.52 billion rupiahs (12.24 percent).



Gambar 6. Nilai Pemakaian Bahan Bakar Menurut Klasifikasi Industri di Provinsi Daerah Istimewa Yogyakarta (ribu rupiah), 2022
 Figure 6. Value of Fuel Consumption by Industrial Classification in Daerah Istimewa Yogyakarta Province (thousand rupiah), 2022

Tiga kelompok Industri yang paling banyak menggunakan bahan bakar selama tahun 2022 adalah kelompok industri Industri makanan (KBLI-10) sebesar 45,46 milyar rupiah per tahun, kelompok 19 Industri produk dari batu bara dan pengilangan minyak bumi (KBLI-19) sebesar 33,16 miliar per tahun dan Industri mesin dan perlengkapan ytdl (KBLI-28) sebesar 16,31 miliar rupiah per tahun.

2.5 Nilai Tambah

Nilai tambah merupakan pertambahan nilai karena suatu komoditi mengalami proses pengolahan, pengangkutan dan penyimpanan dalam suatu proses produksi. Nilai tambah yang dihasilkan inilah nantinya akan dinikmati oleh pengusaha dan buruh/karyawan dalam bentuk keuntungan, upah/gaji, serta dana- dana lain untuk pembayaran berbagai pengeluaran seperti bunga pinjaman dan sewa alat-alatnya .

Pada tahun 2022, nilai output industri manufaktur menengah dan besar di Provinsi Daerah Istimewa Yogyakarta sebesar 22,60 triliun rupiah dengan biaya antara (input antara) sebesar 9,27 triliun rupiah. Dengan demikian, nilai tambah dari kegiatan industri menengah dan besar selama tahun 2022 adalah sebesar 13,33 triliun rupiah. Setelah dikurangi dengan pajak tak langsung,

Third industries which mostly used fuel during 2022 were consist of food products manufacture (KBLI-10) for 1.78 billion rupiahs per year, coal and manufacture of refined petroleum products manufacture (KBLI-19) for 33.16 billion rupiahs and machinery and equipment n.e.c / manufacture (KBLI-28) for 16.31 billion rupiahs.

2.5 Value Added

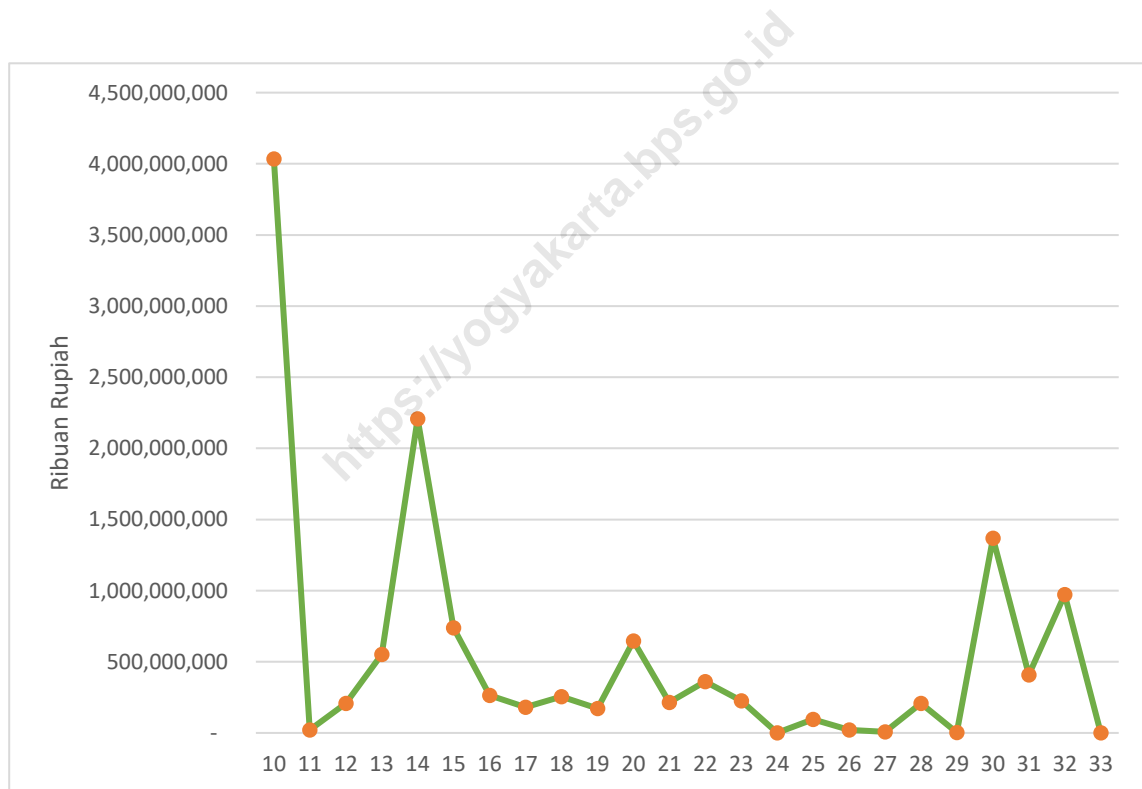
Value added is the addition for a commodity value because of the producing, transporting and storing process. This generated value added will be perceived by entrepreneurs and employees/workers in the form of profits, wages/salaries, and also other funds for the payment of various expenses such as interest loans and leases of other tools.

In 2022, the output value of medium and large manufacture in Daerah Istimewa Yogyakarta Province was 22.60 trillion rupiahs with the intermediate cost (intermediate input) about 9.27 trillion rupiahs. Thus, the value added from medium and large manufacture activities during 2022 was about 13.33 trillion rupiahs, minus indirect tax, the value added factor cost was about 13.17 trillion rupiahs.

didapatlah nilai tambah biaya faktor sebesar 13.17 triliun rupiah.

Sumbangan nilai tambah terbesar didapat dari kelompok industri makanan (KBLI-10) mencapai 4,03 triliun rupiah atau 30,63 persen per tahun, diikuti oleh kelompok industri pakaian jadi (KBLI-14) sebesar 2,21 triliun atau 16,77 persen per tahun serta kelompok industri alat angkatan lainnya (KBLI-30) sebesar 1,37 triliun atau 10,39 persen per tahun.

The highest value added was obtained from food products manufacture (KBLI-14) for 4.03 trillion rupiahs or 30.63 percent per year, followed by value added from wearing apparel manufacture (KBLI-14) for 2.21 trillion rupiahs or 16.77 percent per year and other transport equipment manufacture (KBLI-30) for 1.37 trillion rupiahs or 10.39 percent per year.



Gambar 7. Nilai Tambah per Kelompok Industri di Provinsi Daerah Istimewa Yogyakarta (ribu rupiah), 2022

Figure 7. Value Added by Industrial Classification in Daerah Istimewa Yogyakarta Province (thousand rupiah), 2022



TABEL-TABEL *TABLES*

<https://youtubepart.com/id>

Tabel/ 1.1 Jumlah Perusahaan dan Banyaknya Pekerja Menurut Skala Usaha dan
 Table Klasifikasi Industri di Provinsi Daerah Istimewa Yogyakarta, 2022
*Number of Companies and Workers by Industrial Classification and Facility Status
 in Daerah Istimewa Yogyakarta Province, 2022*

Klasifikasi Industri/ <i>Industrial Classification</i>	Banyaknya Perusahaan/ <i>Number of Companies</i>			Jumlah Tenaga Kerja/ <i>Number of Workers</i>		
	Industri Sedang/ <i>Medium Manufacturing</i>	Industri Besar/ <i>Large Manufacturing</i>	Industri Besar dan Sedang / <i>Large and Medium Manufacturing</i>	Industri Sedang/ <i>Medium Manufacturing</i>	Industri Besar/ <i>Large Manufacturing</i>	Industri Besar dan Sedang/ <i>Large and Medium Manufacturing</i>
(1)	(2)	(3)	(4)	(5)	(6)	(7)
10	65	18	83	2.106	4.948	7.054
11	10	–	10	395	–	395
12	1	6	7	NA	3.998	4.028
13	23	9	32	582	6.471	7.053
14	29	27	56	898	24.909	25.807
15	23	11	34	826	3.770	4.596
16	25	7	32	795	996	1.791
17	5	1	6	230	NA	593
18	36	2	38	1.144	NA	1.996
19	4	–	4	260	–	260
20	35	2	37	1.438	NA	1.748
21	10	2	12	271	NA	773
22	4	6	10	182	1.782	1.964
23	38	7	45	1.134	1.341	2.475
24	2	–	2	NA	–	NA
25	11	1	12	416	NA	546
26	4	–	4	88	–	88
27	3	–	3	113	–	113
28	9	2	11	266	NA	2.698
29	2	–	2	NA	–	NA
30	2	–	2	NA	–	NA
31	63	16	79	2.430	2.535	4.965
32	20	15	35	626	9.990	10.616
33	1	–	1	NA	–	NA
Jumlah/Total	425	132	557	14.437	65.329	79.766

Tabel/ 1.2 Jumlah Perusahaan dan Banyaknya Pekerja Menurut Skala Usaha dan Kabupaten/Kota di Provinsi Daerah Istimewa Yogyakarta, 2022
Number of Companies and Workers by Regency/Municipality and Facility Status in Daerah Istimewa Yogyakarta Province, 2022

Kabupaten/ Kota Regency/ Municipality	Banyaknya Perusahaan/Number of Companies			Jumlah Tenaga Kerja/Number of Workers		
	Industri Sedang/ Medium Manufacturing	Industri Besar/ Large Manufacturing	Industri Besar dan Sedang / Large and Medium Manufacturing	Industri Sedang/ Medium Manufacturing	Industri Besar/ Large Manufacturing	Industri Besar dan Sedang/ Large and Medium Manufacturing
(1)	(2)	(3)	(4)	(5)	(6)	(7)
01 Kab. Kulon Progo	24	4	28	896	3.718	4.614
02 Kab. Bantul	170	43	213	6.006	29.461	35.467
03 Kab. Gunungkidul	16	6	22	402	2.361	2.763
04 Kab. Sleman	159	72	231	5.276	26.523	31.799
71 Kota Yogyakarta	56	7	63	1.857	3.266	5.123
Jumlah/Total	425	132	557	14.437	65.329	79.766

Tabel/ 2.1 Jumlah Perusahaan menurut Kepemilikan Modal dan Kode Industri di Provinsi
 Table Daerah Istimewa Yogyakarta, 2022
*Number of Establishment under ownership of capital and Industrial Code
 Daerah Istimewa Yogyakarta Province, 2022*

Klasifikasi Industri/ Industrial Classification	Pemerintah/ Government	Perusahaan/ Lembaga Non Keuangan/ Non-financial Companies	Perusahaan/ Lembaga Keuangan/ Financial Companies	Lembaga Nirlaba/ Non-profit Companies	Perorangan/ Individual Companies	Asing/Luar Negeri/ Foreign Companies
(1)	(2)	(3)	(4)	(5)	(6)	(7)
10	1	8	4	3	60	1
	–	6	2	1	7	1
11	1	1	–	–	7	–
	–	–	–	–	–	–
12	–	1	–	1	4	–
	–	1	–	1	3	–
13	–	1	2	–	25	–
	–	1	1	–	5	–
14	–	4	3	2	29	8
	–	3	2	1	7	7
15	–	1	–	2	21	7
	–	1	–	–	4	6
16	–	–	1	–	28	–
	–	–	–	–	7	–
17	–	1	–	–	4	1
	–	–	–	–	1	–
18	–	3	1	–	28	1
	–	–	–	–	1	–
19	–	1	–	–	1	–
	–	–	–	–	–	–
20	1	4	2	3	22	1
	–	–	1	–	1	–
21	–	–	2	–	10	–
	–	–	2	–	–	–
22	–	–	3	–	4	–

Lanjutan Tabel/Continuation Table 2.1

Klasifikasi Industri/ <i>Industrial Classification</i>	Pemerintah/ <i>Government</i>	Perusahaan/ Lembaga Non Keuangan/ <i>Non-financial Companies</i>	Perusahaan/ Lembaga Keuangan/ <i>Financial Companies</i>	Lembaga Nirlaba/ <i>Non-profit Companies</i>	Perorangan/ <i>Individual Companies</i>	Asing/Luar Negeri/ <i>Foreign Companies</i>
(1)	(2)	(3)	(4)	(5)	(6)	(7)
	–	–	2	–	4	–
23	1	4	–	1	29	1
	–	2	–	–	4	1
24	–	–	–	–	2	–
	–	–	–	–	–	–
25	–	–	1	1	8	–
	–	–	–	–	1	–
26	–	1	–	–	3	–
	–	–	–	–	–	–
27	–	–	–	–	2	–
	–	–	–	–	–	–
28	–	–	1	1	5	–
	–	–	1	–	1	–
29	–	–	–	–	1	1
	–	–	–	–	–	–
30	–	1	–	–	1	–
	–	–	–	–	–	–
31	–	3	6	–	50	8
	–	2	1	–	8	3
32	–	3	–	2	23	4
	–	1	–	1	6	4
33	–	–	–	–	1	–
	–	–	–	–	–	–
Jumlah / Total	4	37	26	16	368	33
	–	17	12	4	60	22

Catatan : angka yang tercetak miring: industri besar, yang tercetak tebal: total Industri Besar dan Sedang, NA: tidak dipublikasikan
 Note: number in italic denote large industry, number in bold denote total large and medium industry, NA: not publication

Lanjutan Tabel/Continuation Table 2.1

Klasifikasi Industri/ <i>Industrial Classification</i>	Pemerintah dan Perusahaan/ Lembaga Non Keuangan / <i>Government & Non-Financial Companies</i>	Pemerintah dan Perusahaan/ Lembaga Keuangan / <i>Government & Financial Companies</i>	Pemerintah dan Lembaga Nirlaba/ <i>Government & Non-Profit Companies</i>	Pemerintah dan Perorangan/ <i>Government & Individual Companies</i>	Pemerintah dan Asing/ <i>Government & Foreign Companies</i>	Perusahaan/ Lembaga Non Keuangan dan Perusahaan/ Lembaga Keuangan <i>Non-financial Companies & Financial Companies</i>
(1)	(8)	(9)	(10)	(11)	(12)	(13)
10	–	–	–	1	–	–
	–	–	–	1	–	–
11	–	–	–	–	–	–
	–	–	–	–	–	–
12	–	–	1	–	–	–
	–	–	1	–	–	–
13	1	–	–	1	–	–
	1	–	–	–	–	–
14	–	–	–	–	–	–
	–	–	–	–	–	–
15	–	–	–	1	–	–
	–	–	–	–	–	–
16	–	–	–	–	–	–
	–	–	–	–	–	–
17	–	–	–	–	–	–
	–	–	–	–	–	–
18	–	–	–	–	–	–
	–	–	–	–	–	–
19	–	1	–	–	–	–
	–	–	–	–	–	–
20	–	–	–	–	–	–
	–	–	–	–	–	–
21	–	–	–	–	–	–
	–	–	–	–	–	–
22	–	–	–	–	–	–
	–	–	–	–	–	–

Lanjutan Tabel/Continuation Table 2.1

Klasifikasi Industri/ <i>Industrial Classification</i>	Pemerintah dan Perusahaan/ Lembaga Non Keuangan / <i>Government & Non-Financial Companies</i>	Pemerintah dan Perusahaan/ Lembaga Keuangan / <i>Government & Financial Companies</i>	Pemerintah dan Lembaga Nirlaba/ <i>Government & Non-Profit Companies</i>	Pemerintah dan Perorangan/ <i>Government & Individual Companies</i>	Pemerintah dan Asing/ <i>Government & Foreign Companies</i>	Perusahaan/ Lembaga Non Keuangan dan Perusahaan/ Lembaga Keuangan <i>Non-financial Companies & Financial Companies</i>
(1)	(8)	(9)	(10)	(11)	(12)	(13)
23	–	–	–	–	–	–
	–	–	–	–	–	–
24	–	–	–	–	–	–
	–	–	–	–	–	–
25	–	–	–	–	–	–
	–	–	–	–	–	–
26	–	–	–	–	–	–
	–	–	–	–	–	–
27	–	–	–	–	–	–
	–	–	–	–	–	–
28	–	–	–	–	–	–
	–	–	–	–	–	–
29	–	–	–	–	–	–
	–	–	–	–	–	–
30	–	–	–	–	–	–
	–	–	–	–	–	–
31	–	–	–	–	–	–
	–	–	–	–	–	–
32	–	–	–	–	–	–
	–	–	–	–	–	–
33	–	–	–	–	–	–
	–	–	–	–	–	–
Jumlah / Total	1	1	1	3	–	–
	<i>1</i>	–	<i>1</i>	<i>1</i>	–	–

Catatan : angka yang tercetak miring: industri besar, yang tercetak tebal: total Industri Besar dan Sedang, NA: tidak dipublikasikan
 Note: number in italic denote large industry, number in bold denote total large and medium industry, NA: not publication

Lanjutan Tabel/Continuation Table 2.1

Klasifikasi Industri/ <i>Industrial Classification</i>	Perusahaan/ Lembaga Non Keuangan dan Lembaga Nirlaba / <i>Non-Financial Companies & Non-Profit Companies</i>	Perusahaan/ Lembaga Non Keuangan dan Perorangan/ <i>Non-Financial Companies & Individual Companies</i>	Perusahaan/ Lembaga Non Keuangan dan Asing/Luar Negeri/ <i>Non-Financial Companies & Foreign Companies</i>	Perusahaan/ Lembaga Keuangan dan Lembaga Nirlaba/ <i>Financial Companies & Non-Profit Companies</i>	Perusahaan/ Lembaga Keuangan dan Perorangan/ <i>Financial Companies & Individual Companies</i>
(1)	(14)	(15)	(16)	(17)	(18)
10	–	–	–	–	5
	–	–	–	–	–
11	–	1	–	–	–
	–	–	–	–	–
12	–	–	–	–	–
	–	–	–	–	–
13	–	–	1	–	1
	–	–	1	–	–
14	–	1	1	–	2
	–	–	1	–	–
15	–	–	–	–	2
	–	–	–	–	–
16	–	–	–	–	2
	–	–	–	–	–
17	–	–	–	–	–
	–	–	–	–	–
18	–	1	–	–	4
	–	1	–	–	–
19	–	–	–	–	1
	–	–	–	–	–
20	–	–	–	–	4
	–	–	–	–	–
21	–	–	–	–	–
	–	–	–	–	–
22	–	–	–	–	3
	–	–	–	–	–

Lanjutan Tabel/Continuation Table 2.1

Klasifikasi Industri/ <i>Industrial Classification</i>	Perusahaan/ Lembaga Non Keuangan dan Lembaga Nirlaba / <i>Non-Financial Companies & Non-Profit Companies</i>	Perusahaan/ Lembaga Non Keuangan dan Perorangan/ <i>Non-Financial Companies & Individual Companies</i>	Perusahaan/ Lembaga Non Keuangan dan Asing/Luar Negeri/ <i>Non-Financial Companies & Foreign Companies</i>	Perusahaan/ Lem baga Keuangan dan Lembaga Nirlaba/ <i>Financial Companies & Non-Profit Companies</i>	Perusahaan/ Lembaga Keuangan dan Perorangan/ <i>Financial Companies & Individual Companies</i>
(1)	(14)	(15)	(16)	(17)	(18)
23	–	–	1	–	6
	–	–	–	–	–
24	–	–	–	–	–
	–	–	–	–	–
25	–	1	–	–	1
	–	–	–	–	–
26	–	–	–	–	–
	–	–	–	–	–
27	–	–	–	–	1
	–	–	–	–	–
28	–	–	1	–	3
	–	–	–	–	–
29	–	–	–	–	–
	–	–	–	–	–
30	–	–	–	–	–
	–	–	–	–	–
31	–	–	–	–	6
	–	–	–	–	–
32	–	–	–	–	–
	–	–	–	–	–
33	–	–	–	–	–
	–	–	–	–	–
Jumlah / Total	–	4	4	–	41
	–	1	2	–	–

Catatan : angka yang tercetak miring: industri besar, yang tercetak tebal: total Industri Besar dan Sedang, NA: tidak dipublikasikan
 Note: number in italic denote large industry, number in bold denote total large and medium industry, NA: not publication

Lanjutan Tabel/Continuation Table 2.1

Klasifikasi Industri/ <i>Industrial Classification</i>	Perusahaan/ Lembaga Keuangan dan Asing/Luar Negeri/ <i>financial companies & foreign companies</i>	Lembaga Nirlaba dan Perorangan/ <i>non-profit companies & individual companies</i>	Lembaga Nirlaba dan Asing/ <i>non-profit companies & foreign companies</i>	Perorangan dan Luar Negeri (Asing)/ <i>individual companies & foreign companies</i>	Lainnya/ <i>Other</i>	Jumlah/ <i>Total</i>
(1)	(19)	(20)	(21)	(22)	(23)	(24)
10	–	–	–	–	–	83
	–	–	–	–	–	18
11	–	–	–	–	–	10
	–	–	–	–	–	–
12	–	–	–	–	–	7
	–	–	–	–	–	6
13	–	–	–	–	–	32
	–	–	–	–	–	9
14	–	–	–	6	–	56
	–	–	–	6	–	27
15	–	–	–	–	–	34
	–	–	–	–	–	11
16	–	–	–	1	–	32
	–	–	–	–	–	7
17	–	–	–	–	–	6
	–	–	–	–	–	1
18	–	–	–	–	–	38
	–	–	–	–	–	2
19	–	–	–	–	–	4
	–	–	–	–	–	–
20	–	–	–	–	–	37
	–	–	–	–	–	2
21	–	–	–	–	–	12
	–	–	–	–	–	2
22	–	–	–	–	–	10
	–	–	–	–	–	6

Lanjutan Tabel/*Continuation Table 2.1*

Klasifikasi Industri/ <i>Industrial Classification</i>	Perusahaan/ Lembaga Keuangan dan Asing/Luar Negeri/ <i>financial companies & foreign companies</i>	Lembaga Nirlaba dan Perorangan/ <i>non-profit companies & individual companies</i>	Lembaga Nirlaba dan Asing/ <i>non-profit companies & foreign companies</i>	Perorangan dan Luar Negeri (Asing)/ <i>individual companies & foreign companies</i>	Lainnya/ <i>Other</i>	Jumlah/ <i>Total</i>
(1)	(19)	(20)	(21)	(22)	(23)	(24)
23	1	–	–	–	1	45
	–	–	–	–	–	7
24	–	–	–	–	–	2
	–	–	–	–	–	–
25	–	–	–	–	–	12
	–	–	–	–	–	1
26	–	–	–	–	–	4
	–	–	–	–	–	–
27	–	–	–	–	–	3
	–	–	–	–	–	–
28	–	–	–	–	–	11
	–	–	–	–	–	2
29	–	–	–	–	–	2
	–	–	–	–	–	–
30	–	–	–	–	–	2
	–	–	–	–	–	–
31	–	–	–	5	–	79
	–	–	–	2	–	16
32	–	–	–	3	–	35
	–	–	–	3	–	15
33	–	–	–	–	–	1
	–	–	–	–	–	–
Jumlah / Total	2	–	–	15	1	557
	–	–	–	11	–	132

Catatan : angka yang tercetak miring: industri besar, yang tercetak tebal: total Industri Besar dan Sedang, NA: tidak dipublikasikan
Note: number in italic denote large industry, number in bold denote total large and medium industry, NA: not publication

Tabel/ 2.2 Jumlah Perusahaan Menurut Kepemilikan Modal dan Kabupaten/Kota di
Table Provinsi Daerah Istimewa Yogyakarta, 2022

*Number of Establishment under ownership of capital and Regency/Municipality
in Daerah Istimewa Yogyakarta Province, 2022*

Kabupaten/ Kota Regency /Municipality	Pemerintah/ Government	Perusahaan/L em baga Non Keuangan/ Non-financial Companies	Perusahaan/ Lembaga Keuangan/ Financial Companies	Lembaga Nirlaba/ Non-profit Companies	Perorangan/ Individual Companies	Asing/Luar Negeri/ Foreign Companies
(1)	(2)	(3)	(4)	(5)	(6)	(7)
01 Kab. Kulon Progo	–	1	1	–	16	3
	–	–	<i>1</i>	–	<i>1</i>	<i>1</i>
02 Kab. Bantul	1	12	11	8	142	11
	–	<i>4</i>	<i>3</i>	<i>1</i>	<i>19</i>	<i>7</i>
03 Kab. Gunungkidul	1	1	1	–	14	2
	–	<i>1</i>	<i>1</i>	–	<i>2</i>	<i>2</i>
04 Kab. Sleman	1	19	10	8	150	17
	–	<i>11</i>	<i>6</i>	<i>3</i>	<i>35</i>	<i>12</i>
71 Kota Yogyakarta	1	4	3	–	46	–
	–	<i>1</i>	<i>1</i>	–	<i>3</i>	–
Jumlah / Total	4	37	26	16	368	33
	–	<i>17</i>	<i>12</i>	<i>4</i>	<i>60</i>	<i>22</i>

Catatan : angka yang tercetak miring: industri besar, yang tercetak tebal: total Industri Besar dan Sedang, NA: tidak dipublikasikan
Note: number in italic denote large industry, number in bold denote total large and medium industry, NA: not publication

Lanjutan Tabel/Continuation Table 2.2

Kabupaten/Kota <i>Regency/ Municipality</i>	Pemerintah dan Perusahaan /Lem baga Non Keuangan / <i>Government & Non- Financial Companies</i>	Pemerintah dan Perusahaan /Lembaga Keuangan / <i>Government & Financial Companie</i>	Pemerintah dan Lembaga Nirlaba/ <i>Government & Non-Profit Companie</i>	Pemerintah dan Perorangan/ <i>Government & Individual Companies</i>	Pemerintah dan Asing/ <i>Government & Foreign Companies</i>	Perusahaan/ Lembaga Non Keuangan dan Perusahaan/ Lembaga Keuangan <i>Non-financial Companies & Financial Companies</i>
(1)	(8)	(9)	(10)	(11)	(12)	(13)
01 Kab. Kulon Progo	–	1	–	1	–	–
	–	–	–	–	–	–
02 Kab. Bantul	–	–	–	1	–	–
	–	–	–	<i>1</i>	–	–
03 Kab. Gunungkidul	–	–	–	–	–	–
	–	–	–	–	–	–
04 Kab. Sleman	1	–	–	1	–	–
	<i>1</i>	–	–	–	–	–
71 Kota Yogyakarta	–	–	1	–	–	–
	–	–	<i>1</i>	–	–	–
Jumlah / Total	1	1	1	3	–	–
	<i>1</i>	–	<i>1</i>	<i>1</i>	–	–

Catatan : angka yang tercetak miring: industri besar, yang tercetak tebal: total Industri Besar dan Sedang, NA: tidak dipublikasikan
 Note: number in italic denote large industry, number in bold denote total large and medium industry, NA: not publication

Lanjutan Tabel/Continuation Table 2.2

Kabupaten/Kota <i>Regency/Municipality</i>	Perusahaan/ Lembaga Non Keuangan dan Lembaga Nirlaba / <i>Non-Financial Companies & Non-Profit Companies</i>	Perusahaan/ Lembaga Non Keuangan dan Perorangan/ <i>Non-Financial Companies & Individual Companies</i>	Perusahaan/ Lembaga Non Keuangan dan Asing/Luar Negeri/ <i>Non-Financial Companies & Foreign Companies</i>	Perusahaan/ Lembaga Keuangan dan Lembaga Nirlaba/ <i>Financial Companies & Non-Profit Companies</i>	Perusahaan/ Lembaga Keuangan dan Perorangan/ <i>Financial Companies & Individual Companies</i>
(1)	(14)	(15)	(16)	(17)	(18)
01 Kab. Kulon Progo	–	–	–	–	3
	–	–	–	–	–
02 Kab. Bantul	–	–	2	–	16
	–	–	<i>1</i>	–	–
03 Kab. Gunungkidul	–	–	–	–	3
	–	–	–	–	–
04 Kab. Sleman	–	4	1	–	12
	–	<i>1</i>	–	–	–
71 Kota Yogyakarta	–	–	1	–	7
	–	–	–	–	–
Jumlah / Total	–	4	4	–	41
	–	<i>1</i>	<i>2</i>	–	–

Catatan : angka yang tercetak miring: industri besar, yang tercetak tebal: total Industri Besar dan Sedang, NA: tidak dipublikasikan
 Note: number in italic denote large industry, number in bold denote total large and medium industry, NA: not publication

Lanjutan Tabel/Continuation Table 2.2

Kabupaten/Kota <i>Regency/Municipality</i>	Perusahaan/ Lembaga Keuangan dan Asing/Luar Negeri/ <i>financial companies & foreign companies</i>	Lembaga Nirlaba dan Perorangan/ <i>non-profit companies & individual companies</i>	Lembaga Nirlaba dan Asing/ <i>non-profit companies & foreign companies</i>	Perorangan dan Luar Negeri (Asing)/ <i>individual companies & foreign companies</i>	Lainnya/ <i>Other</i>	Jumlah/ <i>Total</i>
(1)	(19)	(20)	(21)	(22)	(23)	(24)
01 Kab. Kulon Progo	–	–	–	2		28
	–	–	–	1		4
02 Kab. Bantul	1	–	–	8		213
	–	–	–	7		43
03 Kab. Gunungkidul	–	–	–	–		22
	–	–	–	–	–	6
04 Kab. Sleman	1	–	–	5	1	231
	–	–	–	3	–	72
71 Kota Yogyakarta	–	–	–	–	–	63
	–	–	–	–	–	7
Jumlah / Total	2	–	–	15	1	557
	–	–	–	11	–	132

Catatan : angka yang tercetak miring: industri besar, yang tercetak tebal: total Industri Besar dan Sedang, NA: tidak dipublikasikan
 Note: number in italic denote large industry, number in bold denote total large and medium industry, NA: not publication

Tabel/ 3.1 Jumlah Perusahaan dan Jenis Tenaga Kerja Menurut Klasifikasi Industri di
Table Provinsi Daerah Istimewa Yogyakarta, 2022
*Number of Establishments and type of workers by Industrial Classification in
Daerah Istimewa Yogyakarta Province, 2022*

Klasifikasi Industri/ <i>Industrial Classification</i>	Jumlah Perusahaan/ <i>Number of Establishment</i>	Tenaga Kerja Produksi/ <i>Production workers</i>		
		Laki-laki/ <i>Male</i>	Perempuan/ <i>Female</i>	Jumlah/ <i>Total</i>
(1)	(2)	(3)	(4)	(5)
10	83	3.705	1.713	5.418
	18	2.940	1.055	3.995
11	10	173	108	281
	–	–	–	–
12	7	248	3.148	3.396
	6	232	3.145	3.377
13	32	3.469	3.161	6.630
	9	3.213	2.914	6.127
14	56	2.958	20.416	23.374
	27	2.739	19.801	22.540
15	34	1.133	3.082	4.215
	11	869	2.622	3.491
16	32	869	677	1.546
	7	477	382	859
17	6	291	186	477
	1	NA	NA	NA
18	38	805	192	997
	2	NA	NA	NA
19	4	170	11	181
	–	–	–	–
20	37	884	422	1.306
	2	NA	NA	NA
21	12	311	271	582
	2	NA	NA	NA
22	10	856	630	1.486

Lanjutan Tabel/Continuation Table 3.1

Klasifikasi Industri/ <i>Industrial Classification</i>	Jumlah Perusahaan/ <i>Number of Establishment</i>	Tenaga Kerja Produksi/ <i>Production workers</i>		
		Laki-laki/ <i>Male</i>	Perempuan/ <i>Female</i>	Jumlah/ <i>Total</i>
(1)	(2)	(3)	(4)	(5)
	6	796	572	1.368
23	45	1.720	241	1.961
	7	970	82	1.052
24	2	NA	NA	NA
	–	–	–	–
25	12	444	29	473
	1	NA	NA	NA
26	4	36	18	54
	–	–	–	–
27	3	32	2	34
	–	–	–	–
28	11	2.212	77	2.289
	2	NA	NA	NA
29	2	NA	NA	NA
	–	–	–	–
30	2	NA	NA	NA
	–	–	–	–
31	79	3.360	655	4.015
	16	1.710	239	1.949
32	35	2.604	7.248	9.852
	15	2.353	6.989	9.342
33	1	NA	NA	NA
	–	–	–	–
Jumlah / Total	557	26.436	42.294	68.730
	132	19.052	38.247	57.299

Catatan : angka yang tercetak miring: industri besar, yang tercetak tebal: total Industri Besar dan Sedang, NA: tidak dipublikasikan
 Note: number in italic denote large industry, number in bold denote total large and medium industry, NA: not publication

Lanjutan Tabel/Continuation Table 3.1

Klasifikasi Industri/ Industrial Classification	Tenaga Kerja Lainnya/ Others workers			Jumlah/ Total
	Laki-laki/ Male	Perempuan/ Female	Jumlah/ Total	
(1)	(6)	(7)	(8)	(9)
10	1.089	547	1.636	7.054
	680	273	953	4.948
11	74	40	114	395
	–	–	–	–
12	185	447	632	4.028
	178	443	621	3.998
13	271	152	423	7.053
	228	116	344	6.471
14	862	1.571	2.433	25.807
	833	1.536	2.369	24.909
15	148	233	381	4.596
	104	175	279	3.770
16	145	100	245	1.791
	83	54	137	996
17	66	50	116	593
	NA	NA	NA	NA
18	670	329	999	1.996
	NA	NA	NA	NA
19	79	–	79	260
	–	–	–	–
20	262	180	442	1.748
	NA	NA	NA	NA
21	108	83	191	773
	NA	NA	NA	NA
22	274	204	478	1.964
	255	159	414	1.782
23	403	111	514	2.475
	229	60	289	1.341

Lanjutan Tabel/Continuation Table 3.1

Klasifikasi Industri/ <i>Industrial Classification</i>	Tenaga Kerja Lainnya/ <i>Others workers</i>			Jumlah/ Total
	Laki-laki/ <i>Male</i>	Perempuan/ <i>Female</i>	Jumlah/ Total	
(1)	(6)	(7)	(8)	(9)
24	NA	NA	NA	NA
	–	–	–	–
25	46	27	73	546
	NA	NA	NA	NA
26	19	15	34	88
	–	–	–	–
27	69	10	79	113
	–	–	–	–
28	297	112	409	2.698
	NA	NA	NA	NA
29	NA	NA	NA	NA
	–	–	–	–
30	NA	NA	NA	NA
	–	–	–	–
31	669	281	950	4.965
	<i>445</i>	<i>141</i>	<i>586</i>	<i>2.535</i>
32	352	412	764	10.616
	<i>290</i>	<i>358</i>	<i>648</i>	<i>9.990</i>
33	NA	NA	NA	NA
	–	–	–	–
Jumlah / Total	6.123	4.913	11.036	79.766
	<i>4.290</i>	<i>3.740</i>	<i>8.030</i>	<i>65.329</i>

Catatan : angka yang tercetak miring: industri besar, yang tercetak tebal: total Industri Besar dan Sedang, NA: tidak dipublikasikan
 Note: number in italic denote large industry, number in bold denote total large and medium industry, NA: not publication

Tabel/ 3.2 Jumlah Perusahaan dan Jenis Tenaga Kerja Menurut Kabupaten/Kota di
 Table Provinsi Daerah Istimewa Yogyakarta, 2022
*Number of Establishments and type of workers by Regency/Municipality in
 Daerah Istimewa Yogyakarta Province, 2022*

Kabupaten/ Kota <i>Regency /Municipality</i>	Jumlah Perusahaan/ <i>Number of Establishment</i>	Tenaga Kerja Produksi/ <i>Production workers</i>		
		Laki-laki/ <i>Male</i>	Perempuan/ <i>Female</i>	Jumlah/ <i>Total</i>
(1)	(2)	(3)	(4)	(5)
01 Kab. Kulon Progo	28	1.214	3.084	4.298
	4	714	2.821	3.535
02 Kab. Bantul	213	9.297	21.446	30.743
	43	5.985	19.787	25.772
03 Kab. Gunungkidul	22	1.093	1.391	2.484
	6	827	1.300	2.127
04 Kab. Sleman	231	11.580	15.633	27.213
	72	9.206	13.946	23.152
71 Kota Yogyakarta	63	3.252	740	3.992
	7	2.320	393	2.713
Jumlah / Total	557	26.436	42.294	68.730
	132	19.052	38.247	57.299

Catatan : angka yang tercetak miring: industri besar, yang tercetak tebal: total Industri Besar dan Sedang, NA: tidak dipublikasikan
 Note: number in italic denote large industry, number in bold denote total large and medium industry, NA: not publication

Lanjutan Tabel/Continuation Table 3.2

Kabupaten/Kota <i>Regency/Municipality</i>	Tenaga Kerja Lainnya/ <i>Others workers</i>			Jumlah/ <i>Total</i>
	Laki-laki/ <i>Male</i>	Perempuan/ <i>Female</i>	Jumlah/ <i>Total</i>	
(1)	(6)	(7)	(8)	(9)
01 Kab. Kulon Progo	187	129	316	4.614
	<i>82</i>	<i>101</i>	<i>183</i>	<i>3.718</i>
02 Kab. Bantul	2.342	2.382	4.724	35.467
	<i>1.730</i>	<i>1.959</i>	<i>3.689</i>	<i>29.461</i>
03 Kab. Gunungkidul	156	123	279	2.763
	<i>124</i>	<i>110</i>	<i>234</i>	<i>2.361</i>
04 Kab. Sleman	2.764	1.822	4.586	31.799
	<i>1.999</i>	<i>1.372</i>	<i>3.371</i>	<i>26.523</i>
71 Kota Yogyakarta	674	457	1.131	5.123
	<i>355</i>	<i>198</i>	<i>553</i>	<i>3.266</i>
Jumlah / Total	6.123	4.913	11.036	79.766
	<i>4.290</i>	<i>3.740</i>	<i>8.030</i>	<i>65.329</i>

Catatan : angka yang tercetak miring: industri besar, yang tercetak tebal: total Industri Besar dan Sedang, NA: tidak dipublikasikan
 Note: number in italic denote large industry, number in bold denote total large and medium industry, NA: not publication

Tabel/ 4.1 Jumlah Pengeluaran untuk Pekerja Menurut Klasifikasi Industri dan Jenis
 Table Pengeluaran di Provinsi Daerah Istimewa Yogyakarta (ribu rupiah), 2022
*Expenditure on Workers by Industrial Code and Type of Expenditure in
 Daerah Istimewa Yogyakarta Province (thousand rupiah), 2022*

Pengeluaran untuk Pekerja Produksi/ Expenditure for Production Workers			
Klasifikasi Industri/ Industrial Classification	Upah/Gaji, Upah Lembur, Tunjangan/ Wages/Salary, Overtime Wages, Allowances	Lainnya/ Others	Jumlah/ Total
(1)	(2)	(3)	(4)
10	140.073.417	10.745.198	150.818.615
	100.815.870	9.041.652	109.857.522
11	7.466.053	20.400	7.486.453
	–	–	–
12	116.250.319	6.653.341	122.903.660
	114.943.996	4.659.113	119.603.109
13	183.331.951	2.845.128	186.177.079
	174.695.847	2.747.504	177.443.351
14	837.293.947	72.481.430	909.775.377
	818.198.247	72.226.986	890.425.233
15	117.449.596	5.109.582	122.559.178
	101.249.672	4.463.574	105.713.246
16	37.503.406	1.477.681	38.981.087
	21.841.104	1.046.261	22.887.365
17	14.410.595	2.447	14.413.042
	NA	–	NA
18	28.980.326	1.362.495	30.342.821
	NA	NA	NA
19	10.006.346	–	10.006.346
	–	–	–
20	41.192.288	1.741.259	42.933.547
	NA	NA	NA
21	23.217.959	1.984.818	25.202.777
	NA	NA	NA

Lanjutan Tabel/Continuation Table 4.1

Klasifikasi Industri/ <i>Industrial Classification</i>	Pengeluaran untuk Pekerja Produksi/ <i>Expenditure for Production Workers</i>		
	Upah/Gaji, Upah Lembur, Tunjangan/ <i>Wages/Salary, Overtime Wages, Allowances</i>	Lainnya/ <i>Others</i>	Jumlah/ <i>Total</i>
(1)	(2)	(3)	(4)
22	48.252.916	2.029.493	50.282.409
	<i>44.513.047</i>	<i>1.921.016</i>	<i>46.434.063</i>
23	42.779.767	2.519.560	45.299.327
	<i>23.484.517</i>	<i>837.605</i>	<i>24.322.122</i>
24	NA	NA	NA
	–	–	–
25	16.583.833	1.355.229	17.939.062
	<i>NA</i>	<i>NA</i>	<i>NA</i>
26	1.406.771	24.700	1.431.471
	–	–	–
27	4.029.052	50.000	4.079.052
	–	–	–
28	58.359.509	30.075.064	88.434.573
	<i>NA</i>	<i>NA</i>	<i>NA</i>
29	NA	NA	NA
	–	–	–
30	NA	NA	NA
	–	–	–
31	111.336.377	2.868.676	114.205.053
	<i>49.878.397</i>	<i>1.182.637</i>	<i>51.061.034</i>
32	436.408.417	14.666.941	451.075.358
	<i>423.556.488</i>	<i>14.514.589</i>	<i>438.071.077</i>
33	NA	NA	NA
	–	–	–
Jumlah / Total	2.282.222.594	158.259.089	2.440.481.683
	<i>1.972.762.023</i>	<i>146.953.137</i>	<i>2.119.715.160</i>

Catatan : angka yang tercetak miring: industri besar, yang tercetak tebal: total Industri Besar dan Sedang, NA: tidak dipublikasikan
 Note: number in italic denote large industry, number in bold denote total large and medium industry, NA: not publication

Lanjutan Tabel/Continuation Table 4.1

Klasifikasi Industri/ <i>Industrial Classification</i>	Pengeluaran untuk Pekerja Lainnya/ <i>Expenditure for Other Workers</i>			Jumlah Pengeluaran Seluruh Pekerja/ <i>Total Expenditure</i>
	Upah/Gaji, Upah Lembur, Tunjangan/ <i>Wages/Salary, Overtime Wages, Allowances</i>	Lainnya/ <i>Others</i>	Jumlah/ <i>Total</i>	
(1)	(5)	(6)	(7)	(8)
10	53.063.567	5.451.927	58.515.494	209.334.109
	32.874.591	2.666.541	35.541.132	145.398.654
11	2.863.174	30.000	2.893.174	10.379.627
	–	–	–	–
12	28.583.128	410.717	28.993.845	151.897.505
	28.367.128	410.717	28.777.845	148.380.954
13	13.743.444	248.236	13.991.680	200.168.759
	12.252.980	246.936	12.499.916	189.943.267
14	192.540.709	31.924.799	224.465.508	1.134.240.885
	190.282.787	31.909.008	222.191.795	1.112.617.028
15	14.890.309	595.832	15.486.141	138.045.319
	10.973.596	472.554	11.446.150	117.159.396
16	7.649.538	361.637	8.011.175	46.992.262
	3.316.292	257.263	3.573.555	26.460.920
17	2.982.576	–	2.982.576	17.395.618
	NA	NA	NA	NA
18	33.997.957	1.908.398	35.906.355	66.249.176
	NA	NA	NA	NA
19	3.150.557	–	3.150.557	13.156.903
	–	–	–	–
20	18.732.839	1.477.221	20.210.060	63.143.607
	NA	NA	NA	NA
21	15.664.283	765.673	16.429.956	41.632.733
	NA	NA	NA	NA
22	28.754.112	1.384.156	30.138.268	80.420.677
	27.164.665	1.305.170	28.469.835	74.903.898

Lanjutan Tabel/Continuation Table 4.1

Pengeluaran untuk Pekerja Lainnya/ Expenditure for Other Workers				
Klasifikasi Industri/ Industrial Classification	Upah/Gaji, Upah Lembur, Tunjangan/ Wages/Salary, Overtime Wages, Allowances	Lainnya/ Others	Jumlah/ Total	Jumlah Pengeluaran Seluruh Pekerja/ Total Expenditure
(1)	(5)	(6)	(7)	(8)
23	22.049.772	1.148.786	23.198.558	68.497.885
	<i>15.338.961</i>	<i>819.952</i>	<i>16.158.913</i>	<i>40.481.035</i>
24	NA	NA	NA	NA
	–	–	–	–
25	3.897.836	240.950	4.138.786	22.077.848
	<i>NA</i>	<i>NA</i>	<i>NA</i>	<i>NA</i>
26	921.176	167.682	1.088.858	2.520.329
	–	–	–	–
27	798.680	100.000	898.680	4.977.732
	–	–	–	–
28	26.346.237	7.213.775	33.560.012	121.994.585
	<i>NA</i>	<i>NA</i>	<i>NA</i>	<i>NA</i>
29	NA	NA	NA	NA
	–	–	–	–
30	NA	NA	NA	NA
	–	–	–	–
31	41.924.417	1.017.392	42.941.809	157.146.862
	<i>24.689.324</i>	<i>453.523</i>	<i>25.142.847</i>	<i>76.203.881</i>
32	54.455.369	2.007.857	56.463.226	507.538.584
	<i>49.603.825</i>	<i>2.001.417</i>	<i>51.605.242</i>	<i>489.676.319</i>
33	NA	NA	NA	NA
	–	–	–	–
Jumlah / Total	568.953.912	56.467.038	625.420.950	3.065.902.633
	<i>464.125.402</i>	<i>50.515.201</i>	<i>514.640.603</i>	<i>2.634.355.763</i>

Catatan : angka yang tercetak miring: industri besar, yang tercetak tebal: total Industri Besar dan Sedang, NA: tidak dipublikasikan
 Note: number in italic denote large industry, number in bold denote total large and medium industry, NA: not publication

Tabel/ 4.2 Pengeluaran untuk Pekerja Menurut Kabupaten/Kota dan Jenis Pengeluaran di
 Table Provinsi Daerah Istimewa Yogyakarta (ribu rupiah), 2022
Expenditures on Workers by Regency/Municipality and Type of Expenditures in Daerah Istimewa Yogyakarta Province (thousand rupiah), 2022

Pengeluaran untuk Pekerja Produksi/ Expenditure for Production Workers			
Kabupaten/Kota Regency/Municipality	Upah/Gaji, Upah Lembur, Tunjangan/ Wages/Salary, Overtime Wages, Allowances	Lainnya/ Others	Jumlah/ Total
(1)	(2)	(3)	(4)
01 Kab. Kulon Progo	199.381.066	7.550.264	206.931.330
	<i>180.808.884</i>	<i>7.182.164</i>	<i>187.991.048</i>
02 Kab. Bantul	982.381.243	54.624.899	1.037.006.142
	<i>846.498.633</i>	<i>51.582.440</i>	<i>898.081.073</i>
03 Kab. Gunungkidul	61.237.114	976.710	62.213.824
	<i>54.858.497</i>	<i>688.530</i>	<i>55.547.027</i>
04 Kab. Sleman	925.340.576	61.335.436	986.676.012
	<i>811.971.313</i>	<i>55.417.758</i>	<i>867.389.071</i>
71 Kota Yogyakarta	113.882.595	33.771.780	147.654.375
	<i>78.624.696</i>	<i>32.082.245</i>	<i>110.706.941</i>
Jumlah / Total	2.282.222.594	158.259.089	2.440.481.683
	<i>1.972.762.023</i>	<i>146.953.137</i>	<i>2.119.715.160</i>

Catatan : angka yang tercetak miring: industri besar, yang tercetak tebal: total Industri Besar dan Sedang, NA: tidak dipublikasikan
 Note: number in italic denote large industry, number in bold denote total large and medium industry, NA: not publication

Lanjutan Tabel/*Continuation Table 4.2*

Kabupaten/Kota <i>Regency/ Municipality</i>	Pengeluaran untuk Pekerja Lainnya/ <i>Expenditure for Other Workers</i>			Jumlah Pengeluaran Seluruh Pekerja/ <i>Total Expenditure</i>
	Upah/Gaji, Upah Lembur, Tunjangan/ <i>Wages/Salary, Overtime Wages, Allowances</i>	Lainnya/ <i>Others</i>	Jumlah/ <i>Total</i>	
(1)	(5)	(6)	(7)	(8)
01 Kab. Kulon Progo	19.717.244	687.929	20.405.173	227.336.503
	<i>14.973.987</i>	<i>592.529</i>	<i>15.566.516</i>	<i>203.557.564</i>
02 Kab. Bantul	271.705.361	9.134.654	290.840.015	1.327.846.157
	<i>230.368.289</i>	<i>8.042.091</i>	<i>248.410.380</i>	<i>1.146.491.453</i>
03 Kab. Gunungkidul	16.999.898	778.957	17.778.855	79.992.679
	<i>15.603.647</i>	<i>777.157</i>	<i>16.380.804</i>	<i>71.927.831</i>
04 Kab. Sleman	212.934.768	6.860.186	239.794.954	1.226.470.966
	<i>172.835.033</i>	<i>3.615.665</i>	<i>196.450.698</i>	<i>1.063.839.769</i>
71 Kota Yogyakarta	47.596.641	9.005.312	56.601.953	204.256.328
	<i>30.344.446</i>	<i>7.487.759</i>	<i>37.832.205</i>	<i>148.539.146</i>
Jumlah / Total	568.953.912	6.467.038	625.420.950	3.065.902.633
	<i>464.125.402</i>	<i>0.515.201</i>	<i>514.640.603</i>	<i>2.634.355.763</i>

Catatan : angka yang tercetak miring: industri besar, yang tercetak tebal: total Industri Besar dan Sedang, NA: tidak dipublikasikan
 Note: number in italic denote large industry, number in bold denote total large and medium industry, NA: not publication

Tabel/ 5.1 Tenaga Listrik yang Dibangkitkan, Dibeli dan Dijual Oleh Perusahaan Menurut
 Table Klasifikasi Industri/ Provinsi Daerah Istimewa Yogyakarta, 2022
Electricity Generated, Produced, Purchased and Sold by Industrial Classification in Daerah Istimewa Yogyakarta Province, 2022

Klasifikasi Industri/ Industrial Classification	Tenaga Listrik Yang Dibangkitkan/ Electricity Generated, (Kwh)	Tenaga Listrik/ Electricity			
		Yang Dibeli/ Purchased		Yang Dijual/ Sold	
		Banyaknya/ Quantity (Kwh)	Nilai/Value (000 Rupiah)	Banyaknya/ Quantity (Kwh)	Nilai/Value (000 Rupiah)
(1)	(2)	(3)	(4)	(5)	(6)
10	4.641.555	23.208.769	32.348.976	–	–
	5.019.272	27.517.154	38.413.435	–	–
11	6.816	54.100.408	78.194.656	–	–
	–	–	–	–	–
12	1.575	638.173	894.961	–	–
	1.575	982.801	1.446.695	–	–
13	1.855	63.283.213	75.415.038	–	–
	7.855	63.764.048	76.119.989	–	–
14	334.251.407	20.935.860	25.214.207	–	–
	334.251.407	30.948.286	27.421.505	–	–
15	–	3.840.931	4.692.793	–	–
	–	4.726.007	5.848.258	–	–
16	–	1.439.331	1.894.289	–	–
	1.700	2.759.492	3.639.672	–	–
17	–	9.097.200	2.977.122	–	–
	NA	NA	NA	NA	NA
18	–	1.281.913	1.180.583	–	–
	NA	NA	NA	NA	NA
19	–	1.319.847	1.621.832	–	–
	–	–	–	–	–
20	2.454	17.496.662	26.289.260	–	–
	NA	NA	NA	NA	NA
21	8.654	225.231	335.493	6.853	10.965
	NA	NA	NA	NA	NA
22	238	10.447.749	14.996.418	49	79

Lanjutan Tabel/Continuation Table 5.1

Klasifikasi Industri/ <i>Industrial Classification</i>	Tenaga Listrik Yang Dibangkitkan/ <i>Electricity Generated, (Kwh)</i>	Tenaga Listrik/ <i>Electricity</i>			
		Yang Dibeli/ <i>Purchased</i>		Yang Dijual/ <i>Sold</i>	
		Banyaknya/ <i>Quantity (Kwh)</i>	Nilai/ <i>Value (000 Rupiah)</i>	Banyaknya/ <i>Quantity (Kwh)</i>	Nilai/ <i>Value (000 Rupiah)</i>
(1)	(2)	(3)	(4)	(5)	(6)
	708	10.524.205	15.109.675	53	84
23	197.000	3.308.352	5.168.656	–	–
	204.534	5.379.493	8.244.410	–	–
24	NA	NA	NA	NA	NA
	–	–	–	–	–
25	–	89.000	150.000	–	–
	NA	NA	NA	NA	NA
26	–	83.339	107.691	–	–
	–	–	–	–	–
27	31	65.876	71.804	–	–
	–	–	–	–	–
28	4.970	15.644.504	19.164.892	–	–
	NA	NA	NA	NA	NA
29	NA	NA	NA	NA	NA
	–	–	–	–	–
30	NA	NA	NA	NA	NA
	–	–	–	–	–
31	761	2.862.637	3.573.799	–	–
	216.405	4.686.592	6.188.988	20	33
32	11.526	3.879.939	5.043.119	–	–
	54.226	4.865.184	6.154.474	–	–
33	NA	NA	NA	NA	NA
	–	–	–	–	–
Jumlah / Total	339.121.995	177.679.464	219.339.606	6.902	11.044
	339.800.784	262.582.606	328.988.583	6.989	11.183

Catatan : angka yang tercetak miring: industri besar, yang tercetak tebal: total Industri Besar dan Sedang, NA: tidak dipublikasikan
 Note: number in italic denote large industry, number in bold denote total large and medium industry, NA: not publication

Tabel/ 5.2 Tenaga Listrik yang Dibangkitkan, Dibeli dan Dijual Oleh Perusahaan Menurut
 Table Kabupaten/Kota di Provinsi Daerah Istimewa Yogyakarta, 2022
*Electricity Generated, Produced, Purchased and Sold by Regency/Municipality
 in Daerah Istimewa Yogyakarta Province, 2022*

Kabupaten/Kota <i>Regency/ Municipality</i>	Tenaga Listrik Yang Dibangkitkan/ <i>Electricity Generated, (Kwh)</i>	Tenaga Listrik/ <i>Electricity</i>			
		Yang Dibeli/ <i>Purchased</i>		Yang Dijual/ <i>Sold</i>	
		Banyaknya/ <i>Quantity (Kwh)</i>	Nilai/ <i>Value (000 Rupiah)</i>	Banyakny/ <i>Quantity (Kwh)</i>	Nilai/ <i>Value (000 Rupiah)</i>
(1)	(2)	(3)	(4)	(5)	(6)
01 Kab. Kulon Progo	19.746	17.434.226	12.815.368	–	–
	<i>10.868</i>	<i>6.509.491</i>	<i>9.246.863</i>	–	–
02 Kab. Bantul	330.110.703	36.296.459	46.531.420	17	28
	<i>329.900.709</i>	<i>28.977.690</i>	<i>36.519.176</i>	–	–
03 Kab. Gunungkidul	9.197.000	4.184.482	6.282.229	–	–
	<i>9.197.000</i>	<i>3.036.863</i>	<i>4.530.436</i>	–	–
04 Kab. Sleman	86.889	167.657.269	212.962.223	6.909	11.054
	<i>12.964</i>	<i>106.510.565</i>	<i>124.974.198</i>	<i>6.902</i>	<i>11.044</i>
71 Kota Yogyakarta	386.446	37.010.170	50.397.343	63	101
	<i>454</i>	<i>32.644.855</i>	<i>44.068.933</i>	–	–
Jumlah / Total	339.800.784	262.582.606	328.988.583	6.989	11.183
	<i>339.121.995</i>	<i>177.679.464</i>	<i>219.339.606</i>	<i>6.902</i>	<i>11.044</i>

Catatan : angka yang tercetak miring: industri besar, yang tercetak tebal: total Industri Besar dan Sedang, NA: tidak dipublikasikan
 Note: number in italic denote large industry, number in bold denote total large and medium industry, NA: not publication

Tabel/ 6.1 Banyaknya Pemakaian Bahan Bakar dan Pelumas Menurut Klasifikasi Industri di Provinsi Daerah Istimewa Yogyakarta, 2022
The Number of Fuel and Lubricants Used by Industrial Classification in Daerah Istimewa Yogyakarta Province, 2022

Pemakaian Bahan Bakar / Fuel Usage					
Klasifikasi Industri/ Industrial Classification	Bensin/ Benzene	Minyak Solar, Dexlite, Pertamina dex/ Diesel Oil, Dexlite, Pertamina dex	Minyak Diesel/ Industrial Diesel Oil	Bio Solar/ Bio Diesel	Batubara /Coal
	(liter/litre)	(liter/litre)	(liter/litre)	(liter/litre)	(ton)
(1)	(2)	(3)	(4)	(5)	(6)
10	1.341.375	598.239	814	59.335	4.641
	393.707	432.752	80	17.867	4.641
11	47.283	56.125	285	–	–
	–	–	–	–	–
12	23.926	35.357	64.337	89	–
	23.926	35.357	29	89	–
13	27.644	7.919	247	3.642	3.942
	12.714	7.335	38	1.994	3.933
14	174.068	230.659	172	181.910	659
	148.665	217.147	145	181.895	656
15	38.590	26.208	–	45.430	–
	31.654	20.278	–	44.950	–
16	105.061	53.154	800	1.894	–
	47.249	43.366	–	1.743	–
17	6.542	2.900	–	3.410	–
	NA	NA	NA	NA	NA
18	82.889	14.530	–	9.966	–
	NA	NA	NA	NA	NA
19	–	3.173.540	–	14.000	–
	–	–	–	–	–
20	70.870	77.138	2.994	8.007	1.751
	NA	NA	NA	NA	NA
21	5.539	5.331	84	3.347	14
	NA	NA	NA	NA	NA

Lanjutan Tabel/Continuation Table 6.1

Klasifikasi Industri/ Industrial Classification	Pemakaian Bahan Bakar / Fuel Usage				
	Bensin/ Benzene	Minyak Solar, Dexlite, Pertamina dex/ Diesel Oil, Dexlite, Pertamina dex	Minyak Diesel/ Industrial Diesel Oil	Bio Solar/ Bio Diesel	Batubara /Coal
	(liter/litre)	(liter/litre)	(liter/litre)	(liter/litre)	(ton)
(1)	(2)	(3)	(4)	(5)	(6)
22	24.957	9.911	20	2.523	4
	<i>24.118</i>	<i>7.432</i>	<i>20</i>	<i>83</i>	<i>4</i>
23	93.611	737.697	3.851	185.877	111
	<i>64.283</i>	<i>350.380</i>	–	–	–
24	NA	NA	NA	NA	NA
	–	–	–	–	–
25	24.171	109.649	127	8.082	–
	<i>NA</i>	<i>NA</i>	<i>NA</i>	<i>NA</i>	<i>NA</i>
26	2.032	150	–	–	–
	–	–	–	–	–
27	1.920	–	–	8	–
	–	–	–	–	–
28	19.610	112.473	1.151	3.109	–
	<i>NA</i>	<i>NA</i>	<i>NA</i>	<i>NA</i>	<i>NA</i>
29	NA	NA	NA	NA	NA
	–	–	–	–	–
30	NA	NA	NA	NA	NA
	–	–	–	–	–
31	103.700	188.841	4.007	21.800	–
	<i>31.970</i>	<i>136.604</i>	<i>2.074</i>	<i>1.250</i>	–
32	84.747	66.138	192	3.401	–
	<i>68.268</i>	<i>34.505</i>	–	<i>3.401</i>	–
33	NA	NA	NA	NA	NA
	–	–	–	–	–
Jumlah / Total	2.281.337	5.506.184	79.081	558.819	11.122
	<i>933.697</i>	<i>1.514.765</i>	<i>3.664</i>	<i>259.227</i>	<i>9.274</i>

Catatan : angka yang tercetak miring: industri besar, yang tercetak tebal: total Industri Besar dan Sedang, NA: tidak dipublikasikan
 Note: number in italic denote large industry, number in bold denote total large and medium industry, NA: not publication

Lanjutan Tabel/Continuation Table 6.1

Klasifikasi Industri/ Industrial Classification	Pemakaian Bahan Bakar / Fuel Usage					
	Briket Batubara/ Coal Briquettes	Gas Alam/ Natural Gas	Minyak Bakar/ Fuel Oil	LPG/ LPG	Biomassa/ Biomass	Pelumas/ Lubricant Oil
	(kg)	(MMBTU)	(liter/litre)	(kg)	(ton)	(liter/litre)
(1)	(7)	(8)	(9)	(10)	(11)	(12)
10	–	2.246	173.670	884.302	7.057	23.812
	–	887	173.608	390.572	7.046	21.919
11	–	–	–	6.240	–	32
	–	–	–	–	–	–
12	–	3	–	89	–	21
	–	3	–	89	–	21
13	5.088	178	50	5.104	6	8.782
	5.088	178	–	905	–	8.509
14	104	6	6.000	4.539	451	309
	104	5	6.000	3.872	451	217
15	–	–	–	3.230	289	720
	–	–	–	852	289	–
16	–	–	–	22.535	–	2.551
	–	–	–	20.725	–	687
17	–	–	–	–	–	3.820
	NA	NA	NA	NA	NA	NA
18	–	10	605	2.721	–	923
	NA	NA	NA	NA	NA	NA
19	–	–	–	–	–	2.310
	–	–	–	–	–	–
20	–	27.497	17.984	59.244	855	2.264
	NA	NA	NA	NA	NA	NA
21	–	262	1.209	4.446	–	141
	NA	NA	NA	NA	NA	NA
22	110	211	19	1.281	–	6.650
	110	48	19	114	–	6.632

Lanjutan Tabel/Continuation Table 6.1

Klasifikasi Industri/ Industrial Classification	Pemakaian Bahan Bakar / Fuel Usage					
	Briket Batubara/ Coal Briquettes	Gas Alam/ Natural Gas	Minyak Bakar/ Fuel Oil	LPG/ LPG	Biomassa/ Biomass	Pelumas/ Lubricant Oil
	(kg)	(MMBTU)	(liter/litre)	(kg)	(ton)	(liter/litre)
(1)	(7)	(8)	(9)	(10)	(11)	(12)
23	299	8.518	212	18.639	–	8.475
	–	<i>3.318</i>	–	<i>16.992</i>	–	<i>1.926</i>
24	NA	NA	NA	NA	NA	NA
	–	–	–	–	–	–
25	–	166	–	8.089	–	3.105
	<i>NA</i>	<i>NA</i>	<i>NA</i>	<i>NA</i>	<i>NA</i>	<i>NA</i>
26	–	–	–	–	–	50
	–	–	–	–	–	–
27	–	–	–	336	–	–
	–	–	–	–	–	–
28	–	83.501	–	54.266	–	36.373
	<i>NA</i>	<i>NA</i>	<i>NA</i>	<i>NA</i>	<i>NA</i>	<i>NA</i>
29	NA	NA	NA	NA	NA	NA
	–	–	–	–	–	–
30	NA	NA	NA	NA	NA	NA
	–	–	–	–	–	–
31	–	–	–	26.480	–	1.252
	–	–	–	<i>21.953</i>	–	<i>357</i>
32	–	–	–	182.573	–	3.878
	–	–	–	<i>180.069</i>	–	<i>3.826</i>
33	NA	NA	NA	NA	NA	NA
	–	–	–	–	–	–
Jumlah / Total	5.601	122.598	203.639	1.296.935	8.658	108.797
	<i>5.302</i>	<i>88.340</i>	<i>198.916</i>	<i>707.237</i>	<i>7.915</i>	<i>84.001</i>

Catatan : angka yang tercetak miring: industri besar, yang tercetak tebal: total Industri Besar dan Sedang, NA: tidak dipublikasikan
 Note: number in italic denote large industry, number in bold denote total large and medium industry, NA: not publication

Tabel/ 6.2 Banyaknya Pemakaian Bahan Bakar dan Pelumas Menurut Kabupaten/Kota
 Table di Provinsi Daerah Istimewa Yogyakarta, 2022
The Number of Fuel and Lubricants Used by Regency/Municipality in Daerah Istimewa Yogyakarta Province, 2022

Kabupaten/Kota <i>Regency/ Municipality</i>	Pemakaian Bahan Bakar / <i>Fuel Usage</i>				
	Bensin/ <i>Benzene</i>	Minyak Solar, Dexlite, Pertamina dex/ <i>Diesel Oil, Dexlite, Pertamina dex</i>	Minyak Diesel/ <i>Industrial Diesel Oil</i>	Bio Solar/ Bio Diesel	Batubara <i>/Coal</i>
	(liter/litre)	(liter/litre)	(liter/litre)	(liter/litre)	(ton)
(1)	(2)	(3)	(4)	(5)	(6)
01 Kab. Kulon Progo	49.951	500.415	923	91.445	–
	<i>21.948</i>	<i>49.626</i>	<i>923</i>	<i>198</i>	–
02 Kab. Bantul	1.426.140	3.587.821	6.301	274.906	5.567
	<i>385.609</i>	<i>563.629</i>	<i>1.087</i>	<i>197.057</i>	<i>5.183</i>
03 Kab. Gunungkidul	90.988	422.947	–	76.700	–
	<i>79.881</i>	<i>346.071</i>	–	<i>35.005</i>	–
04 Kab. Sleman	602.832	664.729	71.394	75.886	4.185
	<i>367.735</i>	<i>313.751</i>	<i>1.383</i>	<i>10.048</i>	<i>4.065</i>
71 Kota Yogyakarta	111.426	330.272	463	39.882	1.370
	<i>78.524</i>	<i>241.688</i>	<i>271</i>	<i>16.919</i>	<i>26</i>
Jumlah / Total	2.281.337	5.506.184	79.081	558.819	11.122
	<i>933.697</i>	<i>1.514.765</i>	<i>3.664</i>	<i>259.227</i>	<i>9.274</i>

Catatan : angka yang tercetak miring: industri besar, yang tercetak tebal: total Industri Besar dan Sedang, NA: tidak dipublikasikan
 Note: number in italic denote large industry, number in bold denote total large and medium industry, NA: not publication

Lanjutan Tabel/Continuation Table 6.2

Kabupaten/Kota <i>Regency/ Municipality</i>	Pemakaian Bahan Bakar / <i>Fuel Usage</i>					
	Briket Batubara/ <i>Coal Briquettes</i>	Gas Alam/ <i>Natural Gas</i>	Minyak Bakar/ <i>Fuel Oil</i>	LPG/ <i>LPG</i>	Biomass/ <i>Biomass</i>	Pelumas/ <i>Lubricant Oil</i>
	(kg)	(MMBTU)	(liter/litre)	(kg)	(ton)	(liter/litre)
(1)	(7)	(8)	(9)	(10)	(11)	(12)
01 Kab. Kulon Progo	–	1.063	–	12.440	–	7.409
	–	<i>1.063</i>	–	<i>4.844</i>	–	<i>2.471</i>
02 Kab. Bantul	2.687	1.843	177.669	467.925	7.377	28.899
	<i>2.422</i>	<i>88</i>	<i>173.567</i>	<i>111.084</i>	<i>7.005</i>	<i>22.678</i>
03 Kab. Gunungkidul	–	3.318	–	16.757	–	3.282
	–	<i>3.318</i>	–	<i>16.416</i>	–	<i>620</i>
04 Kab. Sleman	2.914	7.884	7.889	683.955	860	26.626
	<i>2.880</i>	<i>1.295</i>	<i>7.389</i>	<i>505.225</i>	<i>492</i>	<i>19.888</i>
71 Kota Yogyakarta	–	108.490	18.081	115.858	421	42.581
	–	<i>82.576</i>	<i>17.960</i>	<i>69.668</i>	<i>418</i>	<i>38.344</i>
Jumlah / Total	5.601	122.598	203.639	296.935	8.658	108.797
	<i>5.302</i>	<i>88.340</i>	<i>198.916</i>	<i>707.237</i>	<i>7.915</i>	<i>84.001</i>

Catatan : angka yang tercetak miring: industri besar, yang tercetak tebal: total Industri Besar dan Sedang, NA: tidak dipublikasikan
 Note: number in italic denote large industry, number in bold denote total large and medium industry, NA: not publication

Tabel/ 6.3 Nilai Pemakaian Bahan Bakar dan Pelumas Menurut Klasifikasi Industri di
Table Provinsi Daerah Istimewa Yogyakarta, 2022
Value of Fuel and Lubricants Used by Industrial Classification in Daerah Istimewa Yogyakarta Province, 2022

Klasifikasi Industri/ <i>Industrial Classification</i>	Nilai/ Value (000 Rp)					
	Bensin/ <i>Benzene</i>	Minyak Solar, Dexlite, Pertamina dex/ <i>Diesel Oil, Dexlite, Pertamina dex</i>	Minyak Diesel/ <i>Industrial Diesel Oil</i>	Bio Solar/ Bio Diesel	Batubara /Coal	Briket Batubara/ Coal Briquettes
	(liter/litre)	(liter/litre)	(liter/litre)	(liter/litre)	(ton)	(kg)
(1)	(2)	(3)	(4)	(5)	(6)	(7)
10	13.603.912	4.472.390	5.651	502.792	7.832.150	–
	4.115.895	3.167.168	850	116.504	7.832.150	–
11	568.294	407.841	2.000	–	–	–
	–	–	–	–	–	–
12	225.027	645.111	643.334	673	–	–
	225.027	645.111	252	673	–	–
13	270.900	53.262	2.152	24.312	4.786.167	18.824
	123.288	48.082	329	13.112	4.777.941	18.824
14	1.768.797	2.886.500	1.502	1.403.651	658.123	386
	1.517.974	2.786.266	1.264	1.403.542	655.472	386
15	452.004	285.248	–	308.780	–	–
	381.567	226.526	–	305.660	–	–
16	909.140	396.681	8.000	15.079	–	–
	320.526	316.034	–	13.950	–	–
17	66.619	34.800	–	27.285	–	–
	NA	NA	NA	NA	NA	NA
18	767.127	126.750	–	52.161	–	–
	NA	NA	NA	NA	NA	NA
19	–	32.928.511	–	140.000	–	–
	–	–	–	–	–	–
20	685.618	623.575	21.148	72.502	1.574.842	–
	NA	NA	NA	NA	NA	NA
21	55.412	53.124	738	23.247	12.193	–
	NA	NA	NA	NA	NA	NA

Lanjutan Tabel/Continuation Table 6.3

Klasifikasi Industri/ Industrial Classification	Nilai/ Value (000 Rp)					
	Bensin/ Benzene	Minyak Solar, Dexlite, Pertamina dex/ Diesel Oil, Dexlite, Pertamina dex	Minyak Diesel/ Industrial Diesel Oil	Bio Solar/ Bio Diesel	Batubara /Coal	Briket Batubara/ Coal Briquettes
	(liter/litre)	(liter/litre)	(liter/litre)	(liter/litre)	(ton)	(kg)
(1)	(2)	(3)	(4)	(5)	(6)	(7)
22	249.330	106.879	175	14.363	3.264	406
	<i>241.011</i>	<i>88.372</i>	<i>175</i>	<i>626</i>	<i>3.059</i>	<i>406</i>
23	839.882	8.951.646	34.194	1.826.820	99.957	1.106
	<i>559.601</i>	<i>4.722.718</i>	–	–	–	–
24	NA	NA	NA	NA	NA	NA
	–	–	–	–	–	–
25	240.981	1.877.432	1.103	54.351	210	-
	<i>NA</i>	<i>NA</i>	<i>NA</i>	<i>NA</i>	<i>NA</i>	<i>NA</i>
26	20.318	1.200	–	–	–	–
	–	–	–	–	–	–
27	19.200	–	–	77	–	–
	–	–	–	–	–	–
28	192.897	1.221.273	10.073	23.818	–	–
	<i>NA</i>	<i>NA</i>	<i>NA</i>	<i>NA</i>	<i>NA</i>	<i>NA</i>
29	NA	NA	NA	NA	NA	NA
	–	–	–	–	–	–
30	NA	NA	NA	NA	NA	NA
	–	–	–	–	–	–
31	1.038.735	1.933.868	30.585	151.652	–	–
	<i>321.746</i>	<i>1.432.366</i>	<i>17.413</i>	<i>15.000</i>	–	–
32	876.226	1.094.035	2.040	21.484	–	–
	<i>711.684</i>	<i>370.077</i>		<i>21.484</i>	–	–
33	NA	NA	NA	NA	NA	NA
	–	–	–	–	–	–
Jumlah / Total	22.876.836	58.102.326	762.695	4.683.373	14.966.906	20.722
	<i>9.349.330</i>	<i>16.915.524</i>	<i>31.471</i>	<i>1.938.155</i>	<i>13.303.628</i>	<i>19.616</i>

Catatan : angka yang tercetak miring: industri besar, yang tercetak tebal: total Industri Besar dan Sedang, NA: tidak dipublikasikan
 Note: number in italic denote large industry, number in bold denote total large and medium industry, NA: not publication

Lanjutan Tabel/Continuation Table 6.3

Klasifikasi Industri/ Industrial Classification	Nilai/ Value (000 Rp)						Jumlah/ Total
	Gas Alam/ Natural Gas	Minyak Bakar/ Fuel Oil	LPG/ LPG	Biomassa/ Biomass	Lainnya/ Other	Pelumas/ Lubricant Oil	
	(MMBTU)	(liter/litre)	(kg)	(ton)		(liter/litre)	
(1)	(8)	(9)	(10)	(11)	(12)	(13)	(14)
10	203.334	868.604	10.718.775	3.098.653	3.330.680	825.171	45.462.112
	80.257	868.138	5.637.553	3.097.832	122.288	741.106	25.779.741
11	–	–	77.550	–	–	1.600	1.057.285
	–	–	–	–	–	–	–
12	315	–	1.112	–	122	1.035	1.516.729
	315	–	1.112	–	122	1.035	873.647
13	16.098	725	62.170	3.179	222.132	388.016	5.847.937
	16.098	–	11.320	–	202.005	377.747	5.588.746
14	614	60.013	74.424	451.000	93.861	13.304	7.412.175
	517	60.013	64.068	451.000	605	7.953	6.949.060
15	–	–	40.470	294.000	301	29.629	1.410.432
	–	–	15.162	294.000	–	–	1.222.915
16	–	–	536.709	–	209	94.243	1.960.061
	–	–	518.116	–	–	30.076	1.198.702
17	–	–	–	–	–	113.790	242.494
	NA	NA	NA	NA	NA	NA	NA
18	953	10.104	50.553	–	698	39.746	1.048.092
	NA	NA	NA	NA	NA	NA	NA
19	–	–	–	–	–	95.000	33.163.511
	–	–	–	–	–	–	–
20	2.488.433	134.878	942.495	268.628	1.137.245	95.808	8.045.172
	NA	NA	NA	NA	NA	NA	NA
21	23.728	9.072	63.446	–	562	6.638	248.160
	NA	NA	NA	NA	NA	NA	NA
22	19.024	141	16.011	–	1.673	489.695	900.961
	4.353	141	1.420	–	1.285	488.791	829.639

Lanjutan Tabel/Continuation Table 6.3

Klasifikasi Industri/ Industrial Classification	Nilai/ Value (000 Rp)						Jumlah/ Total
	Gas Alam/ Natural Gas	Minyak Bakar/ Fuel Oil	LPG/ LPG	Biomassa/ Biomass	Lainnya/ Other	Pelumas/ Lubricant Oil	
	(MMBTU)	(liter/litre)	(kg)	(ton)		(liter/litre)	
(1)	(8)	(9)	(10)	(11)	(12)	(13)	(14)
23	835.708	1.593	451.162	—	311	405.521	13.447.900
	<i>364.902</i>	—	<i>419.768</i>	—	—	<i>93.962</i>	<i>6.160.951</i>
24	NA	NA	NA	NA	NA	NA	NA
	—	—	—	—	—	—	—
25	15.021	—	112.995	—	347.631	229.696	2.879.420
	<i>NA</i>	<i>NA</i>	<i>NA</i>	<i>NA</i>	<i>NA</i>	<i>NA</i>	<i>NA</i>
26	—	—	—	—	—	2.000	23.518
	—	—	—	—	—	—	—
27	—	—	7.060	—	—	—	26.337
	—	—	—	—	—	—	—
28	8.339.987	—	751.696	—	4.330.767	1.437.550	16.308.061
	<i>NA</i>	<i>NA</i>	<i>NA</i>	<i>NA</i>	<i>NA</i>	<i>NA</i>	<i>NA</i>
29	NA	NA	NA	NA	NA	NA	NA
	—	—	—	—	—	—	—
30	NA	NA	NA	NA	NA	NA	NA
	—	—	—	—	—	—	—
31	—	—	467.599	—	19.572	64.023	3.706.034
	—	—	<i>413.081</i>	—	—	<i>18.598</i>	<i>2.218.204</i>
32	—	—	3.882.808	—	300	186.064	6.062.957
	—	—	<i>3.851.057</i>	—	<i>300</i>	<i>183.864</i>	<i>5.138.466</i>
33	NA	NA	NA	NA	NA	NA	NA
	—	—	—	—	—	—	—
Jumlah / Total	11.943.215	1.143.480	18.516.670	4.115.460	9.498.464	4.648.230	51.278.377
	<i>8.842.602</i>	<i>1.073.511</i>	<i>11.911.473</i>	<i>3.854.497</i>	<i>4.784.792</i>	<i>3.488.680</i>	<i>75.513.279</i>

Catatan : angka yang tercetak miring: industri besar, yang tercetak tebal: total Industri Besar dan Sedang, NA: tidak dipublikasikan
 Note: number in italic denote large industry, number in bold denote total large and medium industry, NA: not publication

Tabel/ 6.4 Nilai Pemakaian Bahan Bakar dan Pelumas Menurut Kabupaten/Kota di
 Table Provinsi Daerah Istimewa Yogyakarta, 2022
*Value of Fuel and Lubricants Used by Regency/Municipality in Daerah Istimewa
 Yogyakarta Province, 2022*

Kabupaten/Kota Regency/ Municipality	Nilai/ Value (000 Rp)					
	Bensin/ Benzene	Minyak Solar, Dexlite, Pertamina dex/ Diesel Oil, Dexlite, Pertamina dex	Minyak Diesel/ Industrial Diesel Oil	Bio Solar/ Bio Diesel	Batubara /Coal	Briket Batubara/ Coal Briquettes
	(liter/litre)	(liter/litre)	(liter/litre)	(liter/litre)	(ton)	(kg)
(1)	(2)	(3)	(4)	(5)	(6)	(7)
01 Kab. Kulon Progo	496.331	6.697.703	8079	1.072.687	—	—
	<i>220.549</i>	<i>499.761</i>	<i>8079</i>	<i>1.487</i>	—	—
02 Kab. Bantul	14.271.315	35.504.076	51139	2.193.103	8.597.764	9.941
	<i>3.872.118</i>	<i>5.446.419</i>	<i>7480</i>	<i>1.563.868</i>	<i>8.252.610</i>	<i>8.962</i>
03 Kab. Gunungkidul	820.599	5.002.166	—	486.326	—	—
	<i>714.053</i>	<i>4.555.154</i>	—	<i>182.027</i>	—	—
04 Kab. Sleman	6.191.605	6.392.415	699.066	688.268	5.135.980	10.781
	<i>3.797.705</i>	<i>2.846.226</i>	<i>13.541</i>	<i>88.715</i>	<i>5.028.205</i>	<i>10.654</i>
71 Kota Yogyakarta	1.096.986	4.505.966	4.411	242.989	1.233.162	—
	<i>744.905</i>	<i>3.567.964</i>	<i>2.371</i>	<i>102.058</i>	<i>22.813</i>	—
Jumlah / Total	22.876.836	58.102.326	762.695	4.683.373	14.966.906	20.722
	<i>9.349.330</i>	<i>16.915.524</i>	<i>31.471</i>	<i>1.938.155</i>	<i>13.303.628</i>	<i>19.616</i>

Catatan : angka yang tercetak miring: industri besar, yang tercetak tebal: total Industri Besar dan Sedang, NA: tidak dipublikasikan
 Note: number in italic denote large industry, number in bold denote total large and medium industry, NA: not publication

Lanjutan Tabel/Continuation Table 6.4

Kabupaten/Kota Regency/ Municipality	Nilai/ Value (000 Rp)						Jumlah/ Total
	Gas Alam/ Natural Gas	Minyak Bakar/ Fuel Oil	LPG/ LPG	Biomassa/ Biomass	Lainny/ Other	Pelumas/ Lubricant Oil	
	(MMBTU)	(liter/litre)	(kg)	(ton)		(liter/litre)	
(1)	(8)	(9)	(10)	(11)	(12)	(13)	(14)
01 Kab. Kulon Progo	96.183	–	115.996	–	313.126	310.137	9.110.242
	<i>96.183</i>	–	<i>62.515</i>	–	<i>280.248</i>	<i>123.543</i>	<i>1.292.365</i>
02 Kab. Bantul	166.772	927.779	5.098.756	3.174.244	633.755	1.045.288	71.673.932
	<i>7.979</i>	<i>867.836</i>	<i>1.837.607</i>	<i>3.094.102</i>	<i>9.232</i>	<i>777.599</i>	<i>25.745.812</i>
03 Kab. Gunungkidul	364.902	–	418.740	–	905.400	173.442	8.171.575
	<i>364.902</i>	–	<i>410.400</i>	–	–	<i>38.680</i>	<i>6.265.216</i>
04 Kab. Sleman	713.834	79.341	11.188.365	635.342	478.165	1.369.393	33.582.555
	<i>117.289</i>	<i>70.978</i>	<i>8.557.626</i>	<i>454.730</i>	<i>317.935</i>	<i>1.074.754</i>	<i>22.378.358</i>
71 Kota Yogyakarta	10.601.524	136.360	1.694.813	305.874	7.168.018	1.749.970	28.740.073
	<i>8.256.249</i>	<i>134.697</i>	<i>1.043.325</i>	<i>305.665</i>	<i>4.177.377</i>	<i>1.474.104</i>	<i>19.831.528</i>
Jumlah / Total	11.943.215	1.143.480	18.516.67	4.115.460	9.498.464	4.648.230	151.278.377
	<i>8.842.602</i>	<i>1.073.511</i>	<i>11.911.47</i>	<i>3.854.497</i>	<i>4.784.792</i>	<i>3.488.680</i>	<i>75.513.279</i>

Catatan : angka yang tercetak miring: industri besar, yang tercetak tebal: total Industri Besar dan Sedang, NA: tidak dipublikasikan
 Note: number in italic denote large industry, number in bold denote total large and medium industry, NA: not publication

Tabel/ 7.1 Biaya Input Menurut Klasifikasi Industri di Provinsi Daerah Istimewa Yogyakarta, 2022
 Table *Input Values by Industrial Classification in Daerah Istimewa Yogyakarta Province, 2022*

Klasifikasi Industri/ Industrial Classification	Biaya Input/ <i>Input Values</i> (000 rupiah)		
	Bahan Baku dan Penolong/ Raw Material	Bahan Bakar, Tenaga Listrik dan Gas/ Fuel, Electricity and Gas	Sewa Gedung, Mesin dan Alat/ Rent of Building, Machines and The Equipments
(1)	(2)	(3)	(4)
10	1.612.891.936	83.875.547	17.596.857
	1.263.396.920	58.128.717	13.662.111
11	14.392.232	79.251.941	507.500
	–	–	–
12	53.090.719	2.963.424	124.308
	52.311.983	1.768.608	94.308
13	843.693.143	81.967.926	920.248
	834.169.848	81.003.784	770.411
14	2.157.073.990	34.833.680	4.973.407
	2.127.832.074	32.163.267	3.889.826
15	437.049.316	7.258.690	23.830.319
	388.007.749	5.915.708	23.679.898
16	83.035.656	5.599.733	635.112
	38.152.395	3.092.991	–
17	47.402.384	3.810.174	12.300
	NA	NA	NA
18	87.168.683	5.032.755	2.175.749
	NA	NA	NA
19	89.898.453	34.785.343	1.427.972
	–	–	–
20	340.178.174	39.983.629	5.514.460
	NA	NA	NA
21	151.835.383	769.977	100.512
	NA	NA	NA

Lanjutan Tabel/Continuation Table 7.1

Klasifikasi Industri/ Industrial Classification	Biaya Input/Input Values (000 rupiah)		
	Bahan Baku dan Penolong/ Raw Material	Bahan Bakar, Tenaga Listrik dan Gas/Fuel, Electricity and Gas	Sewa Gedung, Mesin dan Alat/Rent of Building, Machines and The Equipments
(1)	(2)	(3)	(4)
22	359.428.318	16.010.636	462.670
	<i>349.320.328</i>	<i>15.826.057</i>	<i>424.746</i>
23	113.451.024	21.692.310	1.495.944
	<i>36.573.987</i>	<i>11.329.607</i>	<i>410.872</i>
24	NA	NA	NA
	–	–	–
25	89.210.275	3.347.279	50.472
	NA	NA	NA
26	11.918.051	131.209	246.527
	–	–	–
27	10.502.101	98.141	150.000
	–	–	–
28	225.953.868	35.758.289	530.270
	NA	NA	NA
29	NA	NA	NA
	–	–	–
30	NA	NA	NA
	–	–	–
31	338.761.597	9.895.022	3.800.892
	<i>143.846.290</i>	<i>5.792.003</i>	<i>1.506.799</i>
32	530.970.890	12.217.431	3.878.551
	<i>506.766.016</i>	<i>10.181.585</i>	<i>3.238.246</i>
33	NA	NA	NA
	–	–	–
Jumlah / Total	7.604.150.185	480.266.960	68.567.403
	<i>6.126.311.998</i>	<i>294.852.885</i>	<i>50.979.565</i>

Catatan : angka yang tercetak miring: industri besar, yang tercetak tebal: total Industri Besar dan Sedang, NA: tidak dipublikasikan
 Note: number in italic denote large industry, number in bold denote total large and medium industry, NA: not publication

Lanjutan Tabel/Continuation Table 7.1

Klasifikasi Industri/ <i>Industrial Classification</i>	Biaya Input/ <i>Input Values</i> (000 rupiah)			Jumlah/ <i>Total</i>
	Jasa yang Diberikan Pihak Lain/ <i>Industrial Service</i>	Kemasan, Representasi dan Royalti, Air/ <i>Packaging, Representation Cost and Royalty, Water</i>	Pengeluaran Lainnya/ <i>Others</i>	
(1)	(5)	(6)	(7)	(8)
10	422.874	23.534.295	79.467.872	1.817.789.381
	212.484	16.194.034	51.377.131	1.402.971.397
11	–	366.017	1.232.045	95.749.735
	–	–	–	–
12	5.734	34.355	6.780.171	62.998.711
	5.734	34.355	6.780.171	60.995.159
13	13.124.955	894.395	23.183.839	963.784.506
	13.073.776	608.976	21.946.040	951.572.835
14	116.204.949	27.006.883	244.918.966	2.585.011.875
	116.000.184	26.869.628	242.164.605	2.548.919.584
15	17.437.335	925.387	21.508.349	508.009.396
	17.411.887	580.957	19.301.735	454.897.934
16	5.818.509	4.598.856	32.503.621	132.191.487
	277.711	3.395.266	2.446.436	47.364.799
17	–	27.195	1.621.384	52.873.437
	NA	NA	NA	NA
18	9.140.485	371.755	17.085.539	120.974.966
	NA	NA	NA	NA
19	400.000	56.200	4.974.820	131.542.788
	–	–	–	–
20	632.753	11.455.580	115.441.372	513.205.968
	NA	NA	NA	NA
21	85.564	7.269.238	8.923.482	168.984.156
	NA	NA	NA	NA
22	19.182.372	85.695	25.385.186	420.554.877
	19.179.897	79.024	23.721.447	408.551.499
23	963.613	2.662.261	43.360.374	183.625.526

Lanjutan Tabel/Continuation Table 7.1

Klasifikasi Industri/ Industrial Classification	Biaya Input/Input Values (000 rupiah)			Jumlah/ Total
	Jasa yang Diberikan Pihak Lain/Industrial Service	Kemasan, Representasi dan Royalti, Air/Packaging, Representatio n Cost and Royalty, Water	Pengeluaran Lainnya /Others	
(1)	(5)	(6)	(7)	(8)
	30.000	1.647.469	34.539.948	84.531.883
24	NA	NA	NA	NA
	-	-	-	-
25	788.072	199.843	3.967.263	97.563.204
	NA	NA	NA	NA
26	-	145.127	396.004	12.836.918
	-	-	-	-
27	500	65.553	217.000	11.033.295
	-	-	-	-
28	548.719	7.886.906	74.961.841	345.639.893
	NA	NA	NA	NA
29	NA	NA	NA	NA
	-	-	-	-
30	NA	NA	NA	NA
	-	-	-	-
31	6.462.350	2.474.559	50.434.298	411.828.718
	5.967.608	999.424	38.040.137	196.152.261
32	35.122.777	6.271.453	32.333.410	620.794.512
	32.523.897	2.688.734	31.657.063	587.055.541
33	NA	NA	NA	NA
	-	-	-	-
Jumlah / Total	226.341.561	96.393.087	791.343.712	9.267.062.908
	215.149.364	69.784.005	640.740.775	7.397.818.592

Catatan : angka yang tercetak miring: industri besar, yang tercetak tebal: total Industri Besar dan Sedang, NA: tidak dipublikasikan
 Note: number in italic denote large industry, number in bold denote total large and medium industry, NA: not publication

Tabel/
Table 7.2 Biaya Input Menurut Kabupaten/Kota di Provinsi Daerah Istimewa Yogyakarta, 2022
Input Cost by Regency/Municipality in Daerah Istimewa Yogyakarta Province, 2022

Kabupaten/Kota Regency/ Municipality	Biaya Input/ <i>Input Values</i> (000 rupiah)		
	Bahan Baku dan Penolong / <i>Raw Material</i>	Bahan Bakar, Tenaga Listrik dan Gas / <i>Fuel, Electricity and Gas</i>	Sewa Gedung, Mesin dan Alat / <i>Rent of Building, Machines and The Equipments</i>
(1)	(2)	(3)	(4)
01 Kab. Kulon Progo	196.603.604	21.925.610	278.298
	<i>134.253.770</i>	<i>10.539.228</i>	<i>239.122</i>
02 Kab. Bantul	3.081.099.846	118.205.352	37.911.002
	<i>2.434.033.505</i>	<i>62.264.988</i>	<i>28.348.940</i>
03 Kab. Gunungkidul	189.961.538	14.453.804	692.796
	<i>182.226.720</i>	<i>10.795.652</i>	<i>349.296</i>
04 Kab. Sleman	3.447.647.909	246.544.778	25.353.041
	<i>2.959.079.889</i>	<i>147.352.556</i>	<i>18.904.974</i>
71 Kota Yogyakarta	688.837.288	79.137.416	4.332.266
	<i>416.718.114</i>	<i>63.900.461</i>	<i>3.137.233</i>
Jumlah / Total	7.604.150.185	480.266.960	68.567.403
	<i>6.126.311.998</i>	<i>294.852.885</i>	<i>50.979.565</i>

Catatan : angka yang tercetak miring: industri besar, yang tercetak tebal: total Industri Besar dan Sedang, NA: tidak dipublikasikan
Note: *number in italic denote large industry, number in bold denote total large and medium industry, NA: not publication*

Lanjutan Tabel/Continuation Table 7.2

Kabupaten/Kota Regency/ Municipality	Biaya Input/Input Values (000 rupiah)			Jumlah/ Total
	Jasa yang Diberikan Pihak Lain/Industrial Service	Kemasan, Representasi dan Royalti,Air/ Packaging, Representation Cost and Royalty, Water	Pengeluaran Lainnya /Others	
(1)	(5)	(6)	(7)	(8)
01 Kab. Kulon Progo	1.667.084	4.831.971	24.870.718	250.177.285
	<i>36.864</i>	<i>365.064</i>	<i>20.079.303</i>	<i>165.513.351</i>
02 Kab. Bantul	37.733.560	43.640.898	307.000.616	3.625.591.274
	<i>33.768.715</i>	<i>31.749.811</i>	<i>245.127.277</i>	<i>2.835.293.236</i>
03 Kab. Gunungkidul	55.627.937	628.347	36.915.062	298.279.484
	<i>55.576.937</i>	<i>144.697</i>	<i>36.330.206</i>	<i>285.423.508</i>
04 Kab. Sleman	129.392.367	33.529.287	260.697.746	4.143.165.128
	<i>123.995.622</i>	<i>26.480.316</i>	<i>198.003.300</i>	<i>3.473.816.657</i>
71 Kota Yogyakarta	1.920.613	13.762.584	161.859.570	949.849.737
	<i>1.771.226</i>	<i>11.044.117</i>	<i>141.200.689</i>	<i>637.771.840</i>
Jumlah / Total	226.341.561	96.393.087	791.343.712	9.267.062.908
	<i>215.149.364</i>	<i>69.784.005</i>	<i>640.740.775</i>	<i>7.397.818.592</i>

Catatan : angka yang tercetak miring: industri besar, yang tercetak tebal: total Industri Besar dan Sedang, NA: tidak dipublikasikan
 Note: number in italic denote large industry, number in bold denote total large and medium industry, NA: not publication

Tabel/
Table 8.1 Nilai Output Menurut Klasifikasi Industri di Provinsi Daerah Istimewa Yogyakarta, 2022
Output Values by Industrial Classification in Daerah Istimewa Yogyakarta Province, 2022

Klasifikasi Industri/ <i>Industrial Classification</i>	Nilai Output/ <i>Value of Gross Output</i> (000 rupiah)		
	Barang yang Dihasilkan/ <i>Goods Produced</i>	Listrik yang Dijual/ <i>Electricity Sold</i>	Jasa Industri yang Diterima dari Pihak Lain/ <i>Industrial Services received from Other Parties</i>
(1)	(2)	(3)	(4)
10	4.066.105.569	–	534.600.188
	1.761.840.408	–	459.277.503
11	31.993.692	–	12.219.912
	–	–	–
12	183.394.335	–	93.592.403
	183.394.335	–	92.268.383
13	1.428.158.773	–	31.671.497
	1.394.796.548	–	29.082.645
14	4.799.516.496	–	52.443.896
	4.721.705.836	–	47.271.530
15	843.499.360	–	403.164.716
	773.599.386	–	382.056.069
16	278.457.129	–	21.295.788
	171.285.552	–	–
17	233.523.558	–	296.750
	NA	NA	NA
18	218.662.370	–	157.361.984
	NA	NA	NA
19	154.714.884	–	153.415.619
	–	–	–
20	792.761.705	101	95.556.249
	NA	NA	NA
21	348.595.986	10.965	177.434
	NA	NA	NA

Lanjutan Tabel/Continuation Table 8.1

Klasifikasi Industri/ <i>Industrial Classification</i>	Nilai Output/ <i>Value of Gross Output</i> (000 rupiah)		
	Barang yang Dihasilkan/ <i>Goods Produced</i>	Listrik yang Dijual/ <i>Electricity Sold</i>	Jasa Industri yang Diterima dari Pihak Lain/ <i>Industrial Services received from Other Parties</i>
(1)	(2)	(3)	(4)
22	555.659.353	84	1.175.836
	<i>526.860.805</i>	<i>79</i>	<i>95.564</i>
23	402.620.801	–	10.208.308
	<i>190.445.862</i>	–	<i>4.098.000</i>
24	NA	NA	NA
	–	–	–
25	145.888.463	–	29.111.682
	NA	NA	NA
26	26.296.956	–	1.350.101
	–	–	–
27	17.656.500	–	–
	–	–	–
28	480.146.671	–	22.206.320
	NA	NA	NA
29	NA	NA	NA
	–	–	–
30	NA	NA	NA
	–	–	–
31	702.207.026	33	107.652.653
	<i>313.575.402</i>	–	<i>28.054.623</i>
32	1.441.756.827	–	163.207.734
	<i>1.359.238.557</i>	–	<i>91.291.742</i>
33	NA	NA	NA
	–	–	–
Jumlah / Total	18.217.453.676	11.183	1.890.709.070
	<i>12.487.333.959</i>	<i>11.044</i>	<i>1.312.528.292</i>

Catatan : angka yang tercetak miring: industri besar, yang tercetak tebal: total Industri Besar dan Sedang, NA: tidak dipublikasikan
 Note: number in italic denote large industry, number in bold denote total large and medium industry, NA: not publication

Lanjutan Tabel/Continuation Table 8.1

Klasifikasi Industri/ <i>Industrial Classification</i>	Nilai Output / Value of Gross Output (000 rupiah)		
	Selisih Nilai Stok Barang Setengah Jadi/ <i>The Difference in Value of the Stock of Intermediate Goods</i>	Penerimaan Lain dari Jasa Non Industri/ <i>Other revenues from Non Industrial Services</i>	Jumlah/ <i>Total</i>
(1)	(5)	(6)	(8)
10	-42.221	1.261.731.994	5.862.395.530
	-1.235.456	1.243.034.151	3.462.916.606
11	182.003	73.480.000	117.875.607
	–	–	–
12	898.789	9.844.997	287.730.524
	898.789	5.344.997	281.906.504
13	8.780.755	54.287.534	1.522.898.559
	8.689.038	51.199.673	1.483.767.904
14	-31.569.591	16.737.150	4.837.127.951
	-30.609.886	15.242.190	4.753.609.670
15	7.582.907	1.476.796	1.255.723.779
	2.243.519	406.251	1.158.305.225
16	100.153.026	43.355	399.949.298
	-3.375.445	–	167.910.107
17	1.935.900	168.000	235.924.208
	NA	NA	NA
18	1.829.508	3.558.731	381.412.593
	NA	NA	NA
19	-191.011	647.384	308.586.876
	–	–	–
20	-1.339.100	281.166.550	1.168.145.505
	NA	NA	NA
21	13.183	35.906.554	384.704.122
	NA	NA	NA
22	10.327.264	220.985.655	788.148.192

Lanjutan Tabel/Continuation Table 8.1

Klasifikasi Industri/ <i>Industrial Classification</i>	Nilai Output / Value of Gross Output (000 rupiah)		
	Selisih Nilai Stok Barang Setengah Jadi/ <i>The Difference in Value of the Stock of Intermediate Goods</i>	Penerimaan Lain dari Jasa Non Industri/ <i>Other revenues from Non Industrial Services</i>	Jumlah/ <i>Total</i>
(1)	(5)	(6)	(8)
	10.324.964	218.507.486	755.788.898
23	-1.255.508	5.071.726	416.645.327
	595.318	2.340.638	197.479.818
24	NA	NA	NA
	–	–	–
25	1.979.649	20.792.972	197.772.766
	NA	NA	NA
26	161.590	6.581.834	34.390.481
	–	–	–
27	1.016.409	142.000	18.814.909
	–	–	–
28	1.147.415	59.563.123	563.063.529
	NA	NA	NA
29	NA	NA	NA
	–	–	–
30	NA	NA	NA
	–	–	–
31	3.115.738	14.058.615	827.034.065
	1.636.189	5.150.549	348.416.763
32	2.750.892	458.638	1.608.174.091
	6.577.623	138.000	1.457.245.922
33	NA	NA	NA
	–	–	–
Jumlah / Total	108.208.437	2.384.229.912	22.600.612.278
	-1.459.102	1.844.258.570	15.642.672.763

Catatan : angka yang tercetak miring: industri besar, yang tercetak tebal: total Industri Besar dan Sedang, NA: tidak dipublikasikan
 Note: number in italic denote large industry, number in bold denote total large and medium industry, NA: not publication

Tabel/
Table 8.2 Nilai Output Menurut Kabupaten/Kota di Provinsi Daerah Istimewa Yogyakarta, 2022
Output Values by Regency/Municipality in Daerah Istimewa Yogyakarta Province, 2022

Kabupaten/Kota Regency/Municipality	Nilai Output/ Value of Gross Output (000 rupiah)		
	Barang yang Dihasilkan/ <i>Goods Produced</i>	Listrik yang Dijual/ <i>Electricity Sold</i>	Jasa Industri yang Diterima dari Pihak Lain/ <i>Industrial Services received from Other Parties</i>
(1)	(2)	(3)	(4)
01 Kab. Kulon Progo	626.093.376	–	88.010.174
	<i>469.081.053</i>	–	<i>70.778.406</i>
02 Kab. Bantul	8.304.631.420	28	905.156.568
	<i>5.263.436.670</i>	–	<i>518.352.217</i>
03 Kab. Gunungkidul	572.105.493	–	182.468
	<i>543.384.207</i>	–	<i>152.030</i>
04 Kab. Sleman	6.359.578.751	11.054	765.771.404
	<i>5.415.446.802</i>	<i>11.044</i>	<i>660.613.175</i>
71 Kota Yogyakarta	2.355.044.636	101	131.588.456
	<i>795.985.227</i>	–	<i>62.632.464</i>
Jumlah / Total	18.217.453.676	11.183	1.890.709.070
	<i>12.487.333.959</i>	<i>11.044</i>	<i>1.312.528.292</i>

Catatan : angka yang tercetak miring: industri besar, yang tercetak tebal: total Industri Besar dan Sedang, NA: tidak dipublikasikan
Note: number in italic denote large industry, number in bold denote total large and medium industry, NA: not publication

Lanjutan Tabel/Continuation Table 8.2

Kabupaten/Kota Regency/Municipality	Nilai Output / Value of Gross Output (000 rupiah)		
	Selisih Nilai Stok Barang Setengah Jadi/ The Difference in Value of the Stock of Intermediate Goods	Penerimaan Lain dari Jasa Non Industri/ Other revenues from Non Industrial Services	Jumlah/ Total
(1)	(5)	(6)	(8)
01 Kab. Kulon Progo	-1.202.599	78.280.508	791.181.459
	-	46.197.424	586.056.883
02 Kab. Bantul	7.061.778	869.708.039	10.086.557.833
	4.032.067	516.305.344	6.302.126.298
03 Kab. Gunungkidul	-24.952.587	1.334.138	548.669.512
	-24.998.587	1.240.638	519.778.288
04 Kab. Sleman	120.240.893	1.150.249.358	8.395.851.460
	22.061.202	1.003.171.947	7.101.304.170
71 Kota Yogyakarta	7.060.952	284.657.869	2.778.352.014
	-2.553.784	277.343.217	1.133.407.124
Jumlah / Total	108.208.437	2.384.229.912	22.600.612.278
	-1.459.102	1.844.258.570	15.642.672.763

Catatan : angka yang tercetak miring: industri besar, yang tercetak tebal: total Industri Besar dan Sedang, NA: tidak dipublikasikan
 Note: number in italic denote large industry, number in bold denote total large and medium industry, NA: not publication

Tabel/
Table 9.1 Nilai Tambah Menurut Klasifikasi Industri di Provinsi Daerah Istimewa Yogyakarta, 2022
Value Added by Industrial Classification in Daerah Istimewa Yogyakarta Province, 2022

Nilai Tambah/Value Added (000 rupiah)					
Klasifikasi Industri/ Industrial Classification	Nilai Output/ Value of Gross Output	Biaya Input/ InputCost	Nilai Tambah (Harga Pasar)/ Value Added (at MarketPrice)	Pajak Tak Langsung/ Indirect Tax	Nilai Tambah (Biaya Faktor Produksi)/ Value Added (at Cost Factor)
(1)	(2)	(3)	(4)	(5)	(6)
10	5.862.395.530	1.817.789.381	4.044.606.149	10.888.521	4.033.717.628
	3.462.916.606	1.402.971.397	2.059.945.209	5.919.405	2.054.025.804
11	117.875.607	95.749.735	22.125.872	1.262.636	20.863.236
	–	–	–	–	–
12	287.730.524	62.998.711	224.731.813	16.947.075	207.784.738
	281.906.504	60.995.159	220.911.345	16.937.355	203.973.990
13	1.522.898.559	963.784.506	559.114.053	8.001.487	551.112.566
	1.483.767.904	951.572.835	532.195.069	7.628.165	524.566.904
14	4.837.127.951	2.585.011.875	2.252.116.076	43.964.112	2.208.151.964
	4.753.609.670	2.548.919.584	2.204.690.086	43.183.218	2.161.506.868
15	1.255.723.779	508.009.396	747.714.383	8.578.213	739.136.170
	1.158.305.225	454.897.934	703.407.291	8.146.660	695.260.631
16	399.949.298	132.191.487	267.757.811	2.641.459	265.116.352
	167.910.107	47.364.799	120.545.308	1.713.659	118.831.649
17	235.924.208	52.873.437	183.050.771	1.382.242	181.668.529
	NA	NA	NA	NA	NA
18	381.412.593	120.974.966	260.437.627	4.259.853	256.177.774
	NA	NA	NA	NA	NA
19	308.586.876	131.542.788	177.044.088	4.243.972	172.800.116
	–	–	–	–	–
20	1.168.145.505	513.205.968	654.939.537	8.902.251	646.037.286
	NA	NA	NA	NA	NA
21	384.704.122	168.984.156	215.719.966	1.729.272	213.990.694
	NA	NA	NA	NA	NA

Lanjutan Tabel/Continuation Table 9.1

Klasifikasi Industri/ <i>Industrial Classification</i>	Nilai Tambah/ <i>Value Added</i> (000 rupiah)				
	Nilai Output/ <i>Value of Gross Output</i>	Biaya Input/ <i>Input Cost</i>	Nilai Tambah (Harga Pasar)/ <i>Value Added (at Market Price)</i>	Pajak Tak Langsung/ <i>Indirect Tax</i>	Nilai Tambah (Biaya Faktor Produksi)/ <i>Value Added (at Cost Factor)</i>
(1)	(2)	(3)	(4)	(5)	(6)
22	788.148.192	420.554.877	367.593.315	7.100.816	360.492.499
	<i>755.788.898</i>	<i>408.551.499</i>	<i>347.237.399</i>	<i>7.057.816</i>	<i>340.179.583</i>
23	416.645.327	183.625.526	233.019.801	7.718.775	225.301.026
	<i>197.479.818</i>	<i>84.531.883</i>	<i>112.947.935</i>	<i>4.173.591</i>	<i>108.774.344</i>
24	NA	NA	NA	NA	NA
	–	–	–	–	–
25	197.772.766	97.563.204	100.209.562	3.837.026	96.372.536
	NA	NA	NA	NA	NA
26	34.390.481	12.836.918	21.553.563	1.389.783	20.163.780
	–	–	–	–	–
27	18.814.909	11.033.295	7.781.614	637.835	7.143.779
	–	–	–	–	–
28	563.063.529	345.639.893	217.423.636	10.376.146	207.047.490
	NA	NA	NA	NA	NA
29	NA	NA	NA	NA	NA
	–	–	–	–	–
30	NA	NA	NA	NA	NA
	–	–	–	–	–
31	827.034.065	411.828.718	415.205.347	6.138.830	409.066.517
	<i>348.416.763</i>	<i>196.152.261</i>	<i>152.264.502</i>	<i>1.887.753</i>	<i>150.376.749</i>
32	1.608.174.091	620.794.512	987.379.579	14.684.839	972.694.740
	<i>1.457.245.922</i>	<i>587.055.541</i>	<i>870.190.381</i>	<i>10.220.534</i>	<i>859.969.847</i>
33	NA	NA	NA	NA	NA
	–	–	–	–	–
Jumlah / Total	22.600.612.278	9.267.062.908	13.333.549.370	165.435.606	13.168.113.764
	<i>15.642.672.763</i>	<i>7.397.818.592</i>	<i>8.244.854.171</i>	<i>123.549.224</i>	<i>8.121.304.947</i>

Catatan : angka yang tercetak miring: industri besar, yang tercetak tebal: total Industri Besar dan Sedang, NA: tidak dipublikasikan
 Note: number in italic denote large industry, number in bold denote total large and medium industry, NA: not publication

Tabel/
Table 9.2 Nilai Tambah Menurut Kabupaten/Kota di Provinsi Daerah Istimewa Yogyakarta, 2022
Value Added by Regency/Municipality in Daerah Istimewa Yogyakarta Province, 2022

Kabupaten/Kota Regency/ Municipality	Nilai Tambah/Value Added (000 rupiah)				
	Nilai Output/ Value of Gross Output	Biaya Input/ InputCost	Nilai Tambah (Harga Pasar)/ Value Added (at MarketPrice)	Pajak Tak Langsung/ Indirect Tax	Nilai Tambah (Biaya Faktor Produksi)/ Value Added (at Cost Factor)
(1)	(2)	(3)	(4)	(5)	(6)
01 Kab. Kulon Progo	791.181.459	250.177.285	541.004.174	1.045.196	539.958.978
	<i>586.056.883</i>	<i>165.513.351</i>	<i>420.543.532</i>	<i>772.260</i>	<i>419.771.272</i>
02 Kab. Bantul	10.086.557.833	3.625.591.274	6.460.966.559	51.148.101	6.409.818.458
	<i>6.302.126.298</i>	<i>2.835.293.236</i>	<i>3.466.833.062</i>	<i>33.218.202</i>	<i>3.433.614.860</i>
03 Kab. Gunungkidul	548.669.512	298.279.484	250.390.028	4.590.924	245.799.104
	<i>519.778.288</i>	<i>285.423.508</i>	<i>234.354.780</i>	<i>4.441.617</i>	<i>229.913.163</i>
04 Kab. Sleman	8.395.851.460	4.143.165.128	4.252.686.332	78.925.284	4.173.761.048
	<i>7.101.304.170</i>	<i>3.473.816.657</i>	<i>3.627.487.513</i>	<i>59.214.103</i>	<i>3.568.273.410</i>
71 Kota Yogyakarta	2.778.352.014	949.849.737	1.828.502.277	29.726.101	1.798.776.176
	<i>1.133.407.124</i>	<i>637.771.840</i>	<i>495.635.284</i>	<i>25.903.042</i>	<i>469.732.242</i>
Jumlah / Total	22.600.612.278	9.267.062.908	13.333.549.370	165.435.606	13.168.113.764
	<i>15.642.672.763</i>	<i>7.397.818.592</i>	<i>8.244.854.171</i>	<i>123.549.224</i>	<i>8.121.304.947</i>

Catatan : angka yang tercetak miring: industri besar, yang tercetak tebal: total Industri Besar dan Sedang, NA: tidak dipublikasikan
Note: number in italic denote large industry, number in bold denote total large and medium industry, NA: not publication

Tabel/
Table 10.1 Nilai Pembelian/Penambahan, Pembuatan/Perbaikan Barang Modal Tetap Menurut Klasifikasi Industri di Provinsi Daerah Istimewa Yogyakarta, 2022
Value of Purchase/Increase, Construction/Major Repairment of Fixed Capital Used by Industrial Classification in Daerah Istimewa Yogyakarta Province, 2022

Klasifikasi Industri/ <i>Industrial Classification</i>	Pembelian/Penambahan dan Pembuatan/Perbaikan Besar/ <i>Purchase/Increase and Construction/Major Repairment (000 rupiah)</i>		
	Tanah/ <i>Land</i>	Gedung/ <i>Building</i>	Mesin dan Perlengkapannya/ <i>Machinery and Equipment</i>
(1)	(2)	(3)	(4)
10	805.775	13.417.494	41.352.118
	–	6.751.783	34.678.866
11	–	215.891	16.100
	–	–	–
12	–	804.736	765.640
	–	804.736	765.640
13	–	–	18.454.165
	–	–	17.934.679
14	2.563.866	16.546.219	32.867.785
	2.313.866	16.529.219	32.304.571
15	1.023.000	1.071.887.634	6.523.649.796
	1.023.000	1.069.887.634	6.521.574.796
16	1.200.000	–	259.854
	1.200.000	–	1.400
17	–	1.922.066	2.245.990
	NA	NA	NA
18	80.000	1.260.000	4.614.636
	NA	NA	NA
19	–	6.884	61.307
	–	–	–
20	600.000	1.300.000	1.839.478
	NA	NA	NA
21	–	75.000	915.500
	NA	NA	NA

Lanjutan Tabel/Continuation Table 10.1

Klasifikasi Industri/ <i>Industrial Classification</i>	Pembelian/Penambahan dan Pembuatan/Perbaikan Besar/ <i>Purchase/Increase and Construction/Major Repairment (000 rupiah)</i>		
	Tanah/ <i>Land</i>	Gedung/ <i>Building</i>	Mesin dan Perlengkapannya/ <i>Machinery and Equipment</i>
(1)	(2)	(3)	(4)
22	–	13.210.610	3.652.033
	–	<i>13.210.610</i>	<i>3.652.033</i>
23	365.000	2.661.398	1.344.992
	<i>200.000</i>	–	<i>493.992</i>
24	NA	NA	NA
	–	–	–
25	3.359.893	26.770	58.200
	NA	NA	NA
26	–	–	993.210
	–	–	–
27	–	500.000	200.000
	–	–	–
28	–	571.822	4.923.321
	NA	NA	NA
29	NA	NA	NA
	–	–	–
30	NA	NA	NA
	–	–	–
31	1.650.000	595.298	293.824.221
	–	<i>87.000</i>	<i>293.403.476</i>
32	40.306.400	1.244.975	15.299.375
	<i>37.556.400</i>	<i>480.000</i>	<i>15.299.375</i>
33	NA	NA	NA
	–	–	–
Jumlah / Total	55.906.934	1.126.648.168	6.949.256.139
	<i>42.293.266</i>	<i>1.107.775.982</i>	<i>6.925.786.151</i>

Catatan : angka yang tercetak miring: industri besar, yang tercetak tebal: total Industri Besar dan Sedang, NA: tidak dipublikasikan
 Note: number in italic denote large industry, number in bold denote total large and medium industry, NA: not publication

Lanjutan Tabel/Continuation Table 10.1

Klasifikasi Industri/ <i>Industrial Classification</i>	Pembelian/Penambahan dan Pembuatan/Perbaikan Besar/ <i>Purchase/Increase and Construction/Major Repairment (000 rupiah)</i>			
	Kendaraan/ <i>Vehicles</i>	Perangkat lunak/data base/ <i>Software/data base</i>	Modal Tetap Lainnya/ <i>Other Fixed Capital</i>	Jumlah/ <i>Total</i>
(1)	(5)	(6)	(7)	(8)
10	3.981.894	72.627	1.727.847	61.357.755
	2.473.315	4.050	377.022	44.285.036
11	30.000	1.500	–	263.491
	–	–	–	–
12	144.400	–	364.600	2.079.376
	144.400	–	364.600	2.079.376
13	1.000	1.000	173.349	18.629.514
	–	–	173.349	18.108.028
14	6.732.557	1.808.736	24.818.243	85.337.406
	6.728.520	1.808.736	24.818.243	84.503.155
15	2.087.148.389	1.500	131.691.463	9.815.401.782
	2.086.948.389	–	131.691.463	9.811.125.282
16	777.700	2.600	–	2.240.154
	378.000	–	–	1.579.400
17	–	–	61.048	4.229.104
	NA	NA	NA	NA
18	690.200	5.500	123.294	6.773.630
	NA	NA	NA	NA
19	3.095.577	–	26.549	3.190.317
	–	–	–	–
20	575.273	68.000	13.000	4.395.751
	NA	NA	NA	NA
21	–	–	–	990.500
	NA	NA	NA	NA
22	354.099	307.381	1.060.813	18.584.936
	354.099	307.381	1.060.813	18.584.936
23	2.196.895	435.922	4.379.832	11.384.039

Lanjutan Tabel/Continuation Table 10.1

Pembelian/Penambahan dan Pembuatan/Perbaikan Besar/ <i>Purchase/Increase and Construction/Major Repairment (000 rupiah)</i>				
Klasifikasi Industri/ <i>Industrial Classification</i>	Kendaraan/ <i>Vehicles</i>	Perangkat lunak/data base/ <i>Software/data base</i>	Modal Tetap Lainnya/ <i>Other Fixed Capital</i>	Jumlah/ <i>Total</i>
(1)	(5)	(6)	(7)	(8)
	1.394.895	435.922	4.379.832	6.904.641
24	NA	NA	NA	NA
	–	–	–	–
25	–	–	–	3.444.863
	NA	NA	NA	NA
26	465.000	–	–	1.458.210
	–	–	–	–
27	–	5.000	50.000	755.000
	–	–	–	–
28	–	–	600.735	6.095.878
	NA	NA	NA	NA
29	NA	NA	NA	NA
	–	–	–	–
30	NA	NA	NA	NA
	–	–	–	–
31	514.449	36.000	8.800	296.628.768
	201.164	5.000	–	293.696.640
32	1.016.353	45.536	304.520	58.217.159
	895.100	45.536	208.677	54.485.088
33	NA	NA	NA	NA
	–	–	–	–
Jumlah / Total	2.108.320.605	2.791.302	165.404.093	10.408.327.241
	2.099.517.882	2.606.625	163.723.126	10.341.703.032

Catatan : angka yang tercetak miring: industri besar, yang tercetak tebal: total Industri Besar dan Sedang, NA: tidak dipublikasikan
Note: number in italic denote large industry, number in bold denote total large and medium industry, NA: not publication

Tabel/ 10.2 Nilai Pembelian/Penambahan, Pembuatan/Perbaikan Barang Modal Tetap Menurut Kabupaten/Kota di Provinsi Daerah Istimewa Yogyakarta, 2022
Value of Purchase/Increase, Construction/Major Repairment of Fixed Capital Used by Regency/Municipality in Daerah Istimewa Yogyakarta Province, 2022

Kabupaten/Kota / Regency/Municipality	Pembelian/Penambahan dan Pembuatan/Perbaikan Besar/ Purchase/Increase and Construction/Major Repairment (000 rupiah)		
	Tanah/ Land	Gedung/ Building	Mesin dan Perlengkapannya/ Machinery and Equipment
(1)	(2)	(3)	(4)
01 Kab. Kulon Progo	37.556.400	635.884	718.107
	<i>37.556.400</i>	<i>329.000</i>	<i>101.800</i>
02 Kab. Bantul	5.888.000	1.089.827.588	6.884.847.593
	<i>2.223.000</i>	<i>1.080.270.426</i>	<i>6.876.254.772</i>
03 Kab. Gunungkidul	300.000	7.662.634	4.858.713
	<i>200.000</i>	<i>7.642.634</i>	<i>4.710.713</i>
04 Kab. Sleman	7.996.866	21.946.623	48.871.661
	<i>2.313.866</i>	<i>19.033.186</i>	<i>38.619.992</i>
71 Kota Yogyakarta	4.165.668	6.575.439	9.960.065
	<i>-</i>	<i>500.736</i>	<i>6.098.874</i>
Jumlah / Total	55.906.934	1.126.648.168	6.949.256.139
	<i>42.293.266</i>	<i>1.107.775.982</i>	<i>6.925.786.151</i>

Catatan : angka yang tercetak miring: industri besar, yang tercetak tebal: total Industri Besar dan Sedang, NA: tidak dipublikasikan
Note: number in italic denote large industry, number in bold denote total large and medium industry, NA: not publication

Lanjutan Tabel/Continuation Table 10.2

Kabupaten/Kota Regency/ Municipality	Pembelian/Penambahan dan Pembuatan/Perbaikan Besar/ Purchase/Increase and Construction/Major Repairment (000 rupiah)			
	Kendaraan/ Vehicles	Perangkat lunak/data base/ Software/data base	Modal Tetap Lainnya/ Other Fixed Capital	Jumlah/ Total
(1)	(5)	(6)	(7)	(8)
01 Kab. Kulon Progo	820.312	–	391.149	40.121.852
	<i>227.912</i>	–	<i>364.600</i>	<i>38.579.712</i>
02 Kab. Bantul	2.098.324.470	176.950	153.102.613	10.232.167.214
	<i>2.093.308.078</i>	<i>10.050</i>	<i>152.663.085</i>	<i>10.204.729.411</i>
03 Kab. Gunungkidul	1.972.870	482.422	5.475.123	20.751.762
	<i>1.939.320</i>	<i>480.922</i>	<i>5.475.123</i>	<i>20.448.712</i>
04 Kab. Sleman	5.997.304	2.125.430	4.890.163	91.828.047
	<i>3.751.172</i>	<i>2.115.653</i>	<i>4.639.485</i>	<i>70.473.354</i>
71 Kota Yogyakarta	1.205.649	6.500	1.545.045	23.458.366
	<i>291.400</i>	–	<i>580.833</i>	<i>7.471.843</i>
Jumlah / Total	2.108.320.605	2.791.302	165.404.093	10.408.327.241
	<i>2.099.517.882</i>	<i>2.606.625</i>	<i>163.723.126</i>	<i>10.341.703.032</i>

Catatan : angka yang tercetak miring: industri besar, yang tercetak tebal: total Industri Besar dan Sedang, NA: tidak dipublikasikan
 Note: number in italic denote large industry, number in bold denote total large and medium industry, NA: not publication

Tabel/
Table 10.3

Nilai Penjualan/Pengurangan Barang Modal Tetap Menurut Klasifikasi Industri di Provinsi Daerah Istimewa Yogyakarta, 2022
Table 10.3 Value of Sale/Reduction of Fixed Capital Used by Industrial Classification in Daerah Istimewa Yogyakarta Province, 2022

Klasifikasi Industri /Industrial Classification	Penjualan/Pengurangan Barang Modal/ Sale/Reduction of Fixed Capital (000 rupiah)		
	Tanah/ Land	Gedung/ Building	Mesin dan Perlengkapannya/ Machinery and Equipment
(1)	(2)	(3)	(4)
10	718.762	15.755.901	114.750.820
	713.762	15.467.564	112.268.781
11	–	–	–
	–	–	–
12	–	–	–
	–	–	–
13	273.000	–	15.000
	–	–	–
14	250.000	2.576.849	8.199.178
	–	2.576.849	8.077.878
15	6.000.000	743.187	1.005.616
	–	243.187	776.326
16	–	–	810.988
	–	–	–
17	–	25.155	685.000
	NA	NA	NA
18	–	258.000	1.978.055
	NA	NA	NA
19	–	–	–
	–	–	–
20	88.044	–	15.750
	NA	NA	NA
21	–	–	–
	NA	NA	NA

Lanjutan Tabel/Continuation Table 10.3

Klasifikasi Industri /Industrial Classification	Penjualan/Pengurangan Barang Modal/ Sale/Reduction of Fixed Capital (000 rupiah)		
	Tanah/ Land	Gedung/ Building	Mesin dan Perlengkapannya/ Machinery and Equipment
(1)	(2)	(3)	(4)
22	–	–	219.180
	–	–	<i>219.180</i>
23	–	–	190.823
	–	–	–
24	NA	NA	NA
	–	–	–
25	–	–	53.849
	<i>NA</i>	<i>NA</i>	<i>NA</i>
26	–	–	180.000
	–	–	–
27	–	150.000	–
	–	–	–
28	–	–	8.819
	<i>NA</i>	<i>NA</i>	<i>NA</i>
29	NA	NA	NA
	–	–	–
30	NA	NA	NA
	–	–	–
31	–	75.000	47.180
	–	–	–
32	–	437.009	11.628.256
	–	<i>428.009</i>	<i>11.610.611</i>
33	NA	NA	NA
	–	–	–
Jumlah / Total	7.329.806	20.021.101	139.788.514
	<i>713.762</i>	<i>18.715.609</i>	<i>133.815.696</i>

Catatan : angka yang tercetak miring: industri besar, yang tercetak tebal: total Industri Besar dan Sedang, NA: tidak dipublikasikan
 Note: number in italic denote large industry, number in bold denote total large and medium industry, NA: not publication

Lanjutan Tabel/Continuation Table 10.3

Klasifikasi Industri/ Industrial Classification	Penjualan/Pengurangan Barang Modal/ Sale/Reduction of Fixed Capital (000 rupiah)		
	Kendaraan/ Vehicles	Modal Tetap Lainnya/ Other Fixed Capital	Jumlah/ Total
(1)	(5)	(7)	(8)
10	8.434.109	10.503.838	150.163.430
	7.935.703	10.459.759	146.845.569
11	–	–	–
	–	–	–
12	–	–	–
	–	–	–
13	500	–	288.500
	–	–	–
14	2.691.850	8.976	13.726.853
	2.691.850	8.976	13.355.553
15	1.220.042.074	23.896	1.227.814.773
	1.219.842.874	23.896	1.220.886.283
16	52.800	–	863.788
	–	–	–
17	12.000	–	722.155
	NA	NA	NA
18	158.547	171.805	2.566.407
	NA	NA	NA
19	–	–	–
	–	–	–
20	565.362	–	669.156
	NA	NA	NA
21	–	–	–
	NA	NA	NA
22	464.056	–	683.236
	464.056	–	683.236

Lanjutan Tabel/Continuation Table 10.3

Klasifikasi Industri/ Industrial Classification	Penjualan/Pengurangan Barang Modal/ Sale/Reduction of Fixed Capital (000 rupiah)		
	Kendaraan/ Vehicles	Modal Tetap Lainnya/ Other Fixed Capital	Jumlah/ Total
(1)	(5)	(7)	(8)
23	117.606	–	308.429
	<i>68.648</i>	–	<i>68.648</i>
24	NA	NA	NA
	–	–	–
25	62.236	–	116.085
	NA	NA	NA
26	–	–	180.000
	–	–	–
27	–	–	150.000
	–	–	–
28	–	–	8.819
	NA	NA	NA
29	NA	NA	NA
	–	–	–
30	NA	NA	NA
	–	–	–
31	1.450.348	–	1.572.528
	<i>135.000</i>	–	<i>135.000</i>
32	419.888	528.669	13.013.822
	<i>295.848</i>	<i>485.286</i>	<i>12.819.754</i>
33	NA	NA	NA
	–	–	–
Jumlah / Total	1.234.471.376	11.237.184	1.412.847.981
	<i>1.231.512.526</i>	<i>11.149.722</i>	<i>1.395.907.315</i>

Catatan : angka yang tercetak miring: industri besar, yang tercetak tebal: total Industri Besar dan Sedang, NA: tidak dipublikasikan
 Note: number in italic denote large industry, number in bold denote total large and medium industry, NA: not publication

Tabel/
Table 10.4 Nilai Penjualan/Pengurangan Barang Modal Tetap Menurut Kabupaten/Kota di Provinsi Daerah Istimewa Yogyakarta, 2022
Value of Sale/Reduction of Fixed Capital Used by Regency/Municipality in Daerah Istimewa Yogyakarta Province, 2022

Kabupaten/Kota / Regency/Municipality	Penjualan/Pengurangan Barang Modal/ Sale/Reduction of Fixed Capital (000 rupiah)		
	Tanah/ Land	Gedung/ Building	Mesin dan Perlengkapannya/ Machinery and Equipment
(1)	(2)	(3)	(4)
01 Kab. Kulon Progo	–	1.382.009	1.952.000
	–	1.382.009	1.937.000
02 Kab. Bantul	1.000.806	16.764.483	130.276.508
	662.762	16.265.146	127.295.290
03 Kab. Gunungkidul	–	–	557.750
	–	–	545.750
04 Kab. Sleman	6.329.000	1.865.609	6.531.427
	51.000	1.068.454	4.037.656
71 Kota Yogyakarta	–	9.000	470.829
	–	–	–
Jumlah / Total	7.329.806	20.021.101	139.788.514
	713.762	18.715.609	133.815.696

Catatan : angka yang tercetak miring: industri besar, yang tercetak tebal: total Industri Besar dan Sedang, NA: tidak dipublikasikan
Note: number in italic denote large industry, number in bold denote total large and medium industry, NA: not publication

Lanjutan Tabel/Continuation Table 10.4

Kabupaten/Kota Regency/ Municipality	Penjualan/Pengurangan Barang Modal/ Sale/Reduction of Fixed Capital (000 rupiah)		
	Kendaraan/ Vehicles	Perangkat lunak/data base/ Software/data base	Jumlah/ Total
(1)	(5)	(6)	(8)
01 Kab. Kulon Progo	50.031	–	3.384.040
	<i>50.031</i>	–	<i>3.369.040</i>
02 Kab. Bantul	1.230.407.440	10.556.932	1.389.006.169
	<i>1.228.044.522</i>	<i>10.474.270</i>	<i>1.382.741.990</i>
03 Kab. Gunungkidul	651.498	–	1.209.248
	<i>651.498</i>	–	<i>1.197.248</i>
04 Kab. Sleman	3.217.631	678.452	18.622.119
	<i>2.766.475</i>	<i>675.452</i>	<i>8.599.037</i>
71 Kota Yogyakarta	144.776	1.800	626.405
	–	–	–
Jumlah / Total	1.234.471.376	11.237.184	1.412.847.981
	<i>1.231.512.526</i>	<i>11.149.722</i>	<i>1.395.907.315</i>

Catatan : angka yang tercetak miring: industri besar, yang tercetak tebal: total Industri Besar dan Sedang, NA: tidak dipublikasikan
 Note: number in italic denote large industry, number in bold denote total large and medium industry, NA: not publication

Tabel/
Table

11.1 Jumlah Perusahaan menurut Status Penanaman Modal dan Klasifikasi Industri di Provinsi Daerah Istimewa Yogyakarta, 2022
Number of Establishment by Investment Facility Status and by Industrial Classification in Daerah Istimewa Yogyakarta Province, 2022

Klasifikasi Industri/ <i>Industrial Classification</i>	PMDN/ <i>Domestic Investment</i>	PMA/ <i>Foreign Investment</i>	Jumlah/ <i>Total</i>
(1)	(2)	(3)	(4)
10	82	1	83
	17	1	18
11	10	–	10
	–	–	–
12	7	–	7
	6	–	6
13	31	1	32
	8	1	9
14	41	15	56
	13	14	27
15	27	7	34
	5	6	11
16	31	1	32
	7	–	7
17	5	1	6
	1	–	1
18	37	1	38
	2	–	2
19	4	–	4
	–	–	–
20	36	1	37
	2	–	2
21	12	–	12
	2	–	2
22	10	–	10
	6	–	6

Lanjutan Tabel/Continuation Table 11.1

Klasifikasi Industri/ <i>Industrial Classification</i>	PMDN/ <i>Domestic Investment</i>	PMA/ <i>Foreign Investment</i>	Jumlah/ <i>Total</i>
(1)	(2)	(3)	(4)
23	42	3	45
	6	1	7
24	2	–	2
	–	–	–
25	12	–	12
	1	–	1
26	4	–	4
	–	–	–
27	3	–	3
	–	–	–
28	10	1	11
	2	–	2
29	1	1	2
	–	–	–
30	2	–	2
	–	–	–
31	65	14	79
	11	5	16
32	28	7	35
	8	7	15
33	1	–	1
	–	–	–
Jumlah / Total	503	54	557
	97	35	132

Catatan : angka yang tercetak miring: industri besar, yang tercetak tebal: total Industri Besar dan Sedang, NA: tidak dipublikasikan
 Note: number in italic denote large industry, number in bold denote total large and medium industry, NA: not publication

Tabel/ 11.2 Jumlah Perusahaan menurut Status Penanaman Modal dan Kabupaten/Kota di Provinsi Daerah Istimewa Yogyakarta, 2022
 Table Number of Establishment by Investment Facility Status and Regency/Municipality in Daerah Istimewa Yogyakarta Province, 2022

Kabupaten/Kota Regency/Municipality	PMDN/ Domestic Investment	PMA/ Foreign Investment	Jumlah/ Total
(1)	(2)	(3)	(4)
01 Kab. Kulon Progo	23	5	28
	<i>2</i>	<i>2</i>	<i>4</i>
02 Kab. Bantul	191	22	213
	<i>28</i>	<i>15</i>	<i>43</i>
03 Kab. Gunungkidul	20	2	22
	<i>4</i>	<i>2</i>	<i>6</i>
04 Kab. Sleman	207	24	231
	<i>57</i>	<i>15</i>	<i>72</i>
71 Kota Yogyakarta	62	1	63
	<i>6</i>	<i>1</i>	<i>7</i>
Jumlah / Total	503	54	557
	<i>97</i>	<i>35</i>	<i>132</i>

Catatan : angka yang tercetak miring: industri besar, yang tercetak tebal: total Industri Besar dan Sedang, NA: tidak dipublikasikan
 Note: number in italic denote large industry, number in bold denote total large and medium industry, NA: not publication

DAFTAR PUSTAKA

REFERENCES

Badan Pusat Statistik. 2024. *Statistik Industri Manufaktur Indonesia Statistics of Indonesia Manufacturing Industry 2022*. Volume 11. Jakarta: BPS.

Badan Pusat Statistik Provinsi Sumatera Selatan. 2023. *Statistik Industri Besar dan Sedang Provinsi Sumatera Selatan*. Volume 8. Palembang: BPS Provinsi Sumatera Selatan.

Badan Pusat Statistik. 2022. *Pedoman Survei Tahunan Perusahaan Industri Manufaktur 2022*. Jakarta: BPS.

Satria Lubis, Ilham. 2022. *Belajar Sekaligus Berwisata di Pabrik Gula dan Spirtus Madukismo Yogyakarta*. Diakses 12 Desember 2024. <https://stabilitasbisnis.com/3927/belajar-sekaligus-berwisata-di-pabrik-gula-dan-spirtus-madukismo-yogyakarta.html>

Badan Pusat Statistik. 2020. *Klasifikasi Baku Lapangan Usaha Indonesia (KBLI) 2020*. Jakarta: BPS

BerAKHLAK
Berorientasi Pelayanan Akuntabel Kompeten
Harmonis Loyal Adaptif Kolaboratif

bangga
melayani
bangsa

DATA

MENCERDASKAN BANGSA

Enlighten The Nation



**BADAN PUSAT STATISTIK
PROVINSI DAERAH ISTIMEWA YOGYAKARTA
BPS-STATISTICS OF DAERAH ISTIMEWA YOGYAKARTA PROVINCE**

Jl. Lingkar Selatan, Tamantirto, Kasihan, Bantul 55183 -
Telp. : (0274) 4342234 Hunting, Fax. : (0274) 4342230 -
Email : bps3400@bps.go.id Homepage :
<http://yogyakarta.bps.go.id>