

KECAMATAN TIRTAJAYA DALAM ANGKA

Tirtajaya Subdistrict in Figures

2019



KECAMATAN TIRTAJAYA DALAM ANGKA
Tirtajaya Subdistrict in Figures
2019

ISSN/ISBN : -
Katalog/*Catalog* : 1102001.3215180
No. Publikasi/*Publication Number* : 32150.1917

Ukuran Buku/*Book Size*: 14,8 x 21 cm
Jumlah Halaman/*Number of Pages*: xviii + 124 halaman/*pages*

Naskah/*Manuscript*:
Herie Sutarya, S.Si.

Penyunting/*Editor*:
BPS Kabupaten Karawang/ *BPS-Statistics of Karawang Regency*

Desain Kover oleh/*Cover Designed by*:
Seksi Integrasi Pengolahan dan Diseminasi Statistik
Integrated Processing and Statistics Dissemination Section

Penerbit/*Published by*:
BPS Kabupaten Karawang/ *BPS-Statistics Karawang Regency*

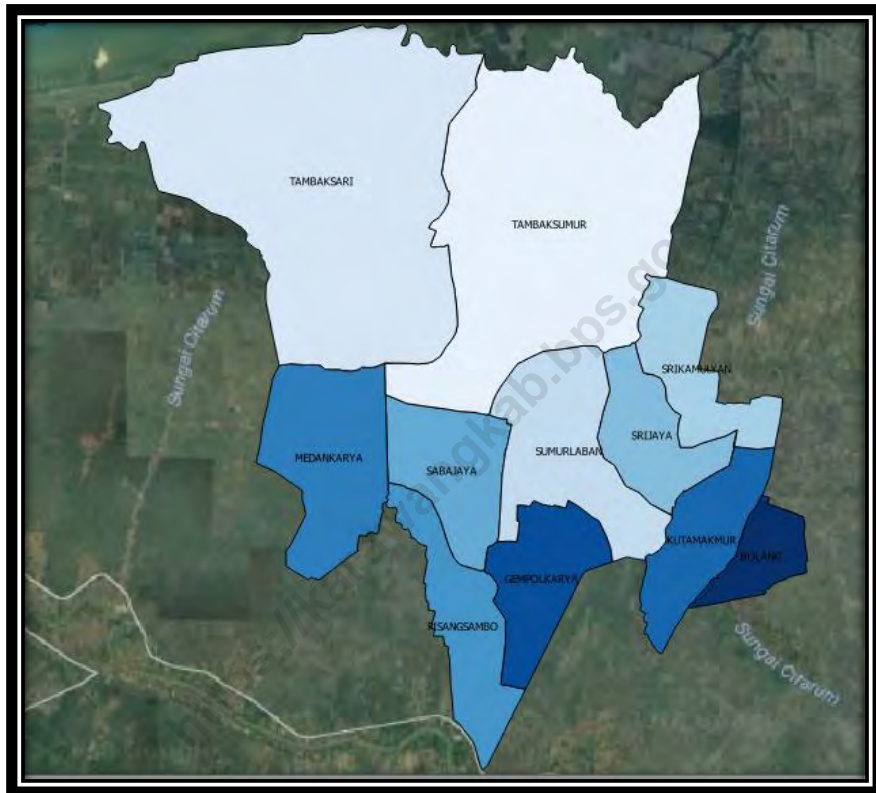
Pencetak/*Printed by*:
BPS Kabupaten Karawang/ *BPS-Statistics Karawang Regency*

Dilarang mengumumkan, mendistribusikan, mengkomunikasikan, dan/ atau menggandakan sebagian atau seluruh isi buku ini untuk tujuan komersial tanpa izin tertulis dari Badan Pusat Statistik

Prohibited to announce, distribute, communicate, and/or copy part of all this book for commercial purpose without permission from BPS-Statistics Indonesia

PETA KECAMATAN TIRTAJAYA

Map of Tirtajaya Subdistrict



KEPALA BPS KABUPATEN KARAWANG

Chef Statistician of Karawang Regency



BUDI CAHYONO

KATA PENGANTAR

“Kecamatan Tirtajaya dalam Angka 2019” merupakan seri publikasi untuk masyarakat yang di dalamnya berisi tabel-tabel data statistik yang merupakan data sekunder yang bersumber dari instansi-instansi di lingkungan pemerintah daerah, instansi-instansi pemerintah maupun swasta yang berada di wilayah Kabupaten Karawang, khususnya di wilayah Kecamatan Tirtajaya.

Kami menyadari bahwa dalam penyusunan publikasi ini masih terdapat kekurangan namun kami terus melakukan usaha-usaha peningkatan dan penyempurnaan luas cakupan, mutu, dan penyajiannya, sehingga diharapkan dapat memenuhi seluruh kebutuhan para pemakai data.

Kepada semua pihak yang telah membantu dalam penyelesaian publikasi ini diucapkan terima kasih. Saran dan kritik sangat diharapkan guna perbaikan pada penerbitan publikasi selanjutnya.

Karawang, September 2019
BPS Kabupaten Karawang
Kepala,



Budi Cahyono

Preface

"Tirtajaya Subdistrict in Figures 2019" is a series of publications for public in which contains statistical data tables which are secondary data sourced from agencies in the local government, government and private agencies in Karawang Regency, especially in Tirtajaya Subdistrict.

We are aware that in the preparation of this publication there are still shortcomings but we continue to make efforts to improve, and improve the scope, quality, and presentation, so that it is expected to meet all the needs of data users.

Thank you to all those who have helped in the completion of this publication. We expect suggestions and criticisms for improvement in subsequent publication.

Karawang, September 2019
BPS Kabupaten Karawang
Chef Statistician,,



Budi Cahyono

DAFTAR ISI/Contents

	Hal./Page
Peta Wilayah Kecamatan Tirtajaya	iii
<i>Map of Tirtajaya Subdistrict</i>	iii
Kepala BPS Kabupaten Karawang	v
<i>Chief Statistian of Karawang Regency</i>	v
Kata Pengantar	Vii
<i>Preface</i>	viii
Daftar Isi/Contents	ix
Daftar Tabel/ <i>List of Tables</i>	x
Penjelasan Umum/ <i>Explanatory Notes</i>	xvii
1. Kondisi Geografi dan Iklim/ <i>Geography and Climate</i>	1
2. Sosial dan Kesejahteraan Rakyat/ <i>Social and Welfare</i>	11
3. Pertanian, Perkebunan, Peternakan, dan Perikanan/ <i>Agriculture, Estate Crops, Livestock, and Fishery</i>	45
4. Pariwisata, Hotel, Perdagangan, dan Transportasi dan Komunikasi/ <i>Tourism, Hotel, Trade, and Transportation and Communication</i>	79
5. Kependudukan dan Ketenagakerjaan/ <i>Population and Employment</i>	97
6. Pemerintahan/ <i>Government</i>	107
7. Keuangan dan Keuangan Daerah/ <i>Finance and Regional Finance</i>	119

DAFTAR TABEL/ *List of Tables*

			Hal./Page
Tabel / Table	1.1.1	Luas Daerah menurut Kelurahan/Desa di Kecamatan Tirtajaya, 2018/ <i>Total Area by Village in Tirtajaya Subdistrict, 2018</i>	4
Tabel / Table	1.1.2	Letak Astromonis dan Jarak Tempuh ke Ibukota Kecamatan dan Ibukota Kabupaten menurut Desa di Kecamatan Tirtajaya, 2018/ <i>Astronomical Location and Distance to Subdistrict Capital and Regeny Capital by Village in Tirtajaya Subdistrict, 2018</i>	5
Tabel / Table	1.1.3	Letak Geografis dan Batas-Batas Menurut Arah Mata Angin menurut Desa di Kecamatan Tirtajaya, 2018/ <i>Geographical Location and Boundaries According to Wind Direction by Village in Tirtajaya Subdistrict, 2018</i>	6
Tabel / Table	1.1.4	Topografi Wilayah Menurut Desa dan Jenis Klasifikasi di Kecamatan Tirtajaya, 2018/ <i>Regional Topography by Village and Classification Type in Tirtajaya Subdistrict, 2018</i>	7
Tabel / Table	1.1.5	Tinggi Wilayah di Atas Permukaan Laut (meter DPL) menurut desa di Kecamatan Tirtajaya, 2018/ <i>Region Height above Sea Level (meter DPL) by village in Tirtajaya Subdistrict, 2018</i>	8
Tabel / Table	1.2.1	Curah Hujan dan Jumlah Hari Hujan menurut Desa dan Bulan di Kecamatan Tirtajaya, 2018/ <i>Rainfall and Number of Rainy Days by Village and Month in Tirtajaya Subdistrict, 2018</i>	9
Tabel / Table	2.1.1	Jumlah Fasilitas Sekolah Menurut Tingkat Pendidikan dan Desa di Kecamatan Tirtajaya, 2016-2018/ <i>Number of Educational Facilities by Educational Level and Village in Tirtajaya Subdistrict, 2016-2018</i>	14
Tabel / Table	2.1.2	Jumlah Murid, Guru dan Rombongan Belajar Tingkat SD Dan Sederajat menurut Desa di Kecamatan Tirtajaya, 2018 <i>Number of Pupils, Teachers and Study Groups at Primary School and Equal by Village in Tirtajaya Subdistrict, 2018</i>	17
Tabel / Table	2.1.3	Jumlah Murid, Guru dan Rombongan Belajar Tingkat SLTP dan Sederajat menurut Desa di Kecamatan Tirtajaya, 2018 <i>Number of Pupils, Teachers and Study Groups at Junior High School and Equal by Village in Tirtajaya Subdistrict, 2018</i>	18
Tabel / Table	2.1.4	Jumlah Murid, Guru dan Rombongan Belajar Tingkat SMA dan Sederajat menurut Desa di Kecamatan Tirtajaya, 2018 <i>Number of Pupils, Teachers and Study Groups at Senior High School and Equal by Village in Tirtajaya Subdistrict, 2018</i>	19

Tabel / Table	2.2.1	Jumlah Sarana Kesehatan Menurut Desa di Kecamatan Tirtajaya, 2016-2018/ <i>Number of Health Facilities by Village in Tirtajaya Subdistrict, 2016-2018</i>	20
Tabel / Table	2.2.2	Jumlah Tenaga Kesehatan Menurut Desa di Kecamatan Tirtajaya, 2018/ <i>Number of Medical Personnel by Village in Tirtajaya Subdistrict, 2018</i>	23
Tabel / Table	2.2.3	Jumlah Rumah Sakit Umum, Rumah Sakit Khusus, dan Puskesmas Menurut Desa di Kecamatan Tirtajaya, 2017 dan 2018/ <i>Number of General Hospital, Special Hospital, and Public Health Center by Village in Tirtajaya Subdistrict, 2017 and 2018</i>	24
Tabel / Table	2.2.4	Jumlah Balita Yang Mengalami Gizi Buruk menurut Desa di Kecamatan Tirtajaya, 2018/ <i>Number of Toddlers Who Have Malnutrition by Village in Tirtajaya Subdistrict, 2018</i>	26
Tabel / Table	2.2.5	Jumlah Balita Yang Mengalami Gizi Buruk menurut Desa di Kecamatan Tirtajaya, 2018 / <i>Number of Toddlers Who Have Malnutrition by Village in Tirtajaya Subdistrict, 2018</i>	27
Tabel / Table	2.2.6	Jumlah Rumah Tangga, PUS, Akseptor KB dan Rasio Akseptor KB terhadap PUS menurut Desa di Kecamatan Tirtajaya, 2018 / <i>Number of Households, Couples of Childbearing age, Family Planning Acceptors and Ratio of Family Planning Acceptors to Couples of Childbearing Age by Village in Tirtajaya Subdistrict, 2018</i>	28
Tabel / Table	2.2.7	Jumlah Akseptor KB menurut Jenis Alat Kontrasepsi dan Desa di Kecamatan Tirtajaya, 2018 / <i>Number of Family Planning Acceptors By Type of Contraception and Village in Tirtajaya Subdistrict, 2018</i>	29
Tabel / Table	2.3.1	Jumlah Penduduk menurut Agama yang Dianut dan Desa di Kecamatan Tirtajaya, 2018/ <i>Population by Religion and Village in Tirtajaya Subdistrict, 2018</i>	30
Tabel / Table	2.3.2	Jumlah Tempat Peribadatan Menurut Desa di Kecamatan Tirtajaya, 2018/ <i>Number of Place of Worship by Village in Tirtajaya Subdistrict, 2018</i>	31
Tabel / Table	2.3.3	Persentase Komposisi Suku Bangsa/Etnis Penduduk menurut Desa di Kecamatan Tirtajaya, 2018/ <i>Percentage of Ethnic / Ethnic Population Composition by Village in Tirtajaya Subdistrict, 2018</i>	32
Tabel / Table	2.3.4	Jumlah Penduduk dengan Disabilitas menurut Jenis dan Desa di Kecamatan Tirtajaya, 2018 / <i>Number of Population with Disabilities by Type and Village in Tirtajaya Subdistrict, 2018</i>	33
Tabel / Table	2.3.5	Keberadaan Perumahan Mewah, Apartemen, Komplek Perumahan/Rumah Susun, Pemukiman menurut Desa di Kecamatan Tirtajaya, 2018/ <i>Existence of Real Estate, Apartments, Housing/Flats, Settlement by Village in Tirtajaya Subdistrict, 2018</i>	34

Tabel / Table	2.3.6	Keberadaan Prasarana Kebersihan dan Penanggulangan Kebakaran menurut Desa di Kecamatan Tirtajaya, 2018/ <i>Existence of Cleanup and Fire Management Infrastructure by Village in Tirtajaya Subdistrict, 2018</i>	35
Tabel / Table	2.3.7	Kejadian Bencana Menurut Jenis dan Desa di Kecamatan Tirtajaya, 2018/ <i>Disaster Events by Type and Village in Tirtajaya Subdistrict, 2018</i>	36
Tabel / Table	2.3.8	Jumlah Rumah menurut Kondisi dan Desa di Kecamatan Tirtajaya, 2018/ <i>Number of Houses by Condition and Village in Tirtajaya Subdistrict, 2018</i>	37
Tabel / Table	2.3.9	Kejadian Pencemaran Lingkungan menurut Jenis dan Desa di Kecamatan Tirtajaya, 2018/ <i>Events of Environmental Pollution by Type and Village in Tirtajaya Subdistrict, 2018</i>	38
Tabel / Table	2.3.10	Modal Sosial Lingkungan menurut Jenis dan Desa di Kecamatan Tirtajaya, 2018/ <i>Environmental Social Capital by Type and Village in Tirtajaya Subdistrict, 2018</i>	39
Tabel / Table	2.3.11	Kejadian Tindak Kejahatan dan Kerugiannya menurut Desa di Kecamatan Tirtajaya, 2018/ <i>Crime Acts and Their Losses by Village in Tirtajaya Subdistrict, 2018</i>	40
Tabel / Table	2.3.12	Keberadaan Fasilitas Hiburan dan Olahraga menurut Desa di Kecamatan Tirtajaya, 2018/ <i>Existence of Entertainment and Sports Facilities by Village in Tirtajaya Subdistrict, 2018</i>	41
Tabel / Table	2.3.13	Banyaknya Jama'ah Haji menurut Jenis Kelamin dan Desa di Kecamatan Tirtajaya, 2018/ <i>Number of Hajj Pilgrims by Gender and Village in Tirtajaya Subdistrict, 2018</i>	42
Tabel / Table	2.3.14	Jumlah Panti Sosial menurut Jenis dan Desa di Kecamatan Tirtajaya, 2018/ <i>Number of Social Institutions by Type and Village in Tirtajaya Subdistrict, 2018, 2018</i>	43
Tabel / Table	2.3.15	Jumlah Majelis ta'lim, Kelompok Kebaktian, LSM, Partai Politik, Organisasi Masyarakat, dan Asosiasi menurut desa di Kecamatan Tirtajaya, 2018 / <i>Number of Majelis ta'lim, Assembly Groups, NGOs, Political Parties, Society Organizations, and Associations by village in Tirtajaya Subdistrict, 2018</i>	44
Tabel / Table	3.1.1	Luas Panen Tanaman Sayuran dan Buah Semusim menurut Bulan dan Jenis Tanaman (ha) di Kecamatan Tirtajaya, 2017-2018/ <i>Harvested Area of Seasonal Vegetables and Fruits by Month and Kind of Plant (ha) in Tirtajaya Subdistrict, 2017-2018</i>	48
Tabel / Table	3.1.2	Produksi Tanaman Sayuran dan Buah Semusim menurut Bulan dan Jenis Tanaman (Kuintal) di Kecamatan Tirtajaya, 2017-2018/ <i>Production of Seasonal Vegetables and Fruits by Month and Kind of Plant (Quintal) in Tirtajaya Subdistrict, 2017-2018</i>	50
Tabel / Table	3.1.3	Luas Panen Tanaman Sayuran dan Buah-Buahan Semusim Menurut Jenis Tanaman (ha) di Kecamatan Tirtajaya, 2015-	

		<i>2018/ Harvested Area of Seasonal Vegetables and Fruits by Kind of Plant (hectars) in Tirtajaya Subdistrict, 20152018</i>	52
Tabel / Table	3.1.4	Produksi Tanaman Sayuran dan Buah-Buahan Semusim Menurut Jenis Tanaman (Kuintal) di Kecamatan Tirtajaya, 2015-2018 / <i>Harvested Area of Seasonal Vegetables and Fruits by Kind of Plant (Quintal) in Tirtajaya Subdistrict, 20152018</i>	53
Tabel / Table	3.1.5	Produksi Tanaman Sayuran dan Buah Tahunan menurut Triwulan dan Jenis Tanaman (Kuintal) di Kecamatan Tirtajaya, 2017-2018 / <i>Production of Annual Vegetables and Fruits by Quarterly and Kind of Plant (Quintal) in Tirtajaya Subdistrict, 2017-2018</i>	54
Tabel / Table	3.1.6	Produksi Tanaman Sayuran dan Buah-Buahan Tahunan Menurut Jenis Tanaman (Kuintal) di Kecamatan Tirtajaya, 2015-2018/ <i>Production of Annual Vegetables and Fruits by Kind of Plant (Quintal) in Tirtajaya Subdistrict, 2015-2018</i>	56
Tabel / Table	3.1.7	Luas Panen Tanaman Biofarmaka menurut Bulan dan Jenis Tanaman (m ²) di Kecamatan Tirtajaya, 2017 dan 2018/ <i>Harvested Area of Medicinal Plants by Month and Kind of Plant (m²) in Tirtajaya Subdistrict, 2017 and 2018</i>	57
Tabel / Table	3.1.8	Produksi Tanaman Biofarmaka menurut Bulan dan Jenis Tanaman (kg) di Kecamatan Tirtajaya, 2017 dan 2018/ <i>Production of Medicinal Plants by Month and Kind of Plant (kg) in Tirtajaya Subdistrict, 2017 and 2018</i>	59
Tabel / Table	3.1.9	Luas Panen Tanaman Biofarmaka Menurut Jenis Tanaman (m ²) di Kecamatan Tirtajaya, 2015-2018/ <i>Harvested Area of Medicinal Plants by Kind of Plant (m²) in Tirtajaya Subdistrict, 2015-2018</i>	61
Tabel / Table	3.1.10	Produksi Tanaman Biofarmaka Menurut Jenis Tanaman (kg) di Kecamatan Tirtajaya, 2015-2018/ <i>Production of Medicinal Plants by Kind of Plant (kg) in Tirtajaya Subdistrict, 2015-2018</i>	62
Tabel / Table	3.1.11	Luas Panen Tanaman Hias menurut Bulan dan Jenis Tanaman (m ²) di Kecamatan Tirtajaya, 2017 dan 2018/ <i>Harvested Area of Ornamental Plants by Month and Kind of Plant (m²) in Tirtajaya Subdistrict, 2017 and 2018</i>	63
Tabel / Table	3.1.12	Produksi Tanaman Hias menurut Bulan dan Jenis Tanaman (tangkai) di Kecamatan Tirtajaya, 2017 dan 2018/ <i>Production of Ornamental Plants by Month and Kind of Plant (stalks) in Tirtajaya Subdistrict, 2017 and 2018</i>	65
Tabel / Table	3.1.13	Luas Panen Tanaman Hias Menurut Jenis Tanaman (m ²) di Kecamatan Tirtajaya, 2015-2018/ <i>Harvested Area of Ornamental Plants by Kind of Plant (m²) in Tirtajaya Subdistrict, 2015-2018</i>	67
Tabel / Table	3.1.14	Produksi Tanaman Hias Menurut Jenis Tanaman (tangkai) di Kecamatan Tirtajaya, 2015-2018/ <i>Production of</i>	

		<i>Ornamental Plants by Kind of Plant (stalks) in Tirtajaya Subdistrict, 2015-2018</i>	68
Tabel / Table	3.2.1	Luas Area Tanaman Perkebunan menurut Desa dan Jenis Tanaman (ha) di Kecamatan Tirtajaya, 2017 dan 2018 / <i>Planted area of Estate Crops by Village and Type of Crops (ha) in Tirtajaya Subdistrict, 2017 and 2018</i>	69
Tabel / Table	3.2.2	Produksi Perkebunan menurut Desa dan jenis Tanaman (ton) di Kecamatan Tirtajaya, 2017 dan 2018 / <i>Production of Estate by Village and Type of Crops (ton) in Tirtajaya Subdistrict, 2017 and 2018</i>	71
Tabel / Table	3.3.1	Luas Wilayah menurut Jenis Penggunaan Lahan dan Desa di Kecamatan Tirtajaya Hektar, 2018/ <i>Area by Area of Land and Village Use in Tirtajaya Subdistrict, 2018</i>	73
Tabel / Table	3.3.2	Produksi Tanaman Padi dan Palawija di Kecamatan Tirtajaya, 2018/ <i>Production for Paddy and Palawija Plants in Tirtajaya Subdistrict, 2018</i>	74
Tabel / Table	3.3.3	Total Produksi Per Hektar Tanaman Padi dan Palawija di Kecamatan Tirtajaya, 2018/ <i>Total Production per Hectars for Paddy and Palawija Plants in Tirtajaya Subdistrict, 2018</i>	75
Tabel / Table	3.4.1	Populasi Hewan Ternak menurut Jenis dan Desa di Kecamatan Tirtajaya, 2018/ <i>Population of Livestock by Type and Village in Tirtajaya Subdistrict, 2018</i>	76
Tabel / Table	3.4.2	Populasi Ternak Unggas menurut Jenis dan Desa di Kecamatan Tirtajaya, 2018/ <i>Poultry Populations by Type and Village in Tirtajaya Subdistrict, 2018</i>	77
Tabel / Table	4.1.1	Jumlah Rumah Makan/Restoran Menurut Desa di Kecamatan Tirtajaya, 2015-2018/ <i>Number of Restaurants by Village in Tirtajaya Subdistrict, 2015-2018</i>	81
Tabel / Table	4.2.1	Jumlah Sarana Usaha Perdagangan menurut Jenis dan Desa di Kecamatan Tirtajaya, 2018/ <i>Number of Trade Business Facilities by Type and Village in Tirtajaya Subdistrict, 2018</i>	82
Tabel / Table	4.2.2	Jumlah Sarana Perdagangan Komoditi Strategis menurut Jenis dan Desa di Kecamatan Tirtajaya, 2018/ <i>Number of Strategic Commodity Trading Facilities by Type and Village in Tirtajaya Subdistrict, 2018</i>	83
Tabel / Table	4.2.3	Jumlah Unit Jasa Pendidikan Luar Sekolah menurut Desa di Kecamatan Tirtajaya, 2018 / <i>Number of Non-School Education Services Units by Village in Tirtajaya Subdistrict, 2018</i>	84
Tabel / Table	4.2.4	Jumlah Unit Usaha Jasa Reparasi menurut Jenis dan Desa di Kecamatan Tirtajaya, 2018 / <i>Number of Repair Service Business Units by Type and Village in Tirtajaya Subdistrict, 2018</i>	85
Tabel / Table	4.2.5	Jumlah Unit Usaha Jasa Persewaan menurut Desa di Kecamatan Tirtajaya, 2018/ <i>Number of Rental Services Business Units by Village in Tirtajaya Subdistrict, 2018</i>	86

Tabel / Table	4.2.6	Jumlah Unit Usaha Jasa Lainnya menurut Desa di Kecamatan Tirtajaya, 2018 / <i>Number of Other Service Business Units by Village in Tirtajaya Subdistrict, 2018</i>	87
Tabel / Table	4.2.7	Jumlah Unit Usaha Fotokopi dan Bengkel menurut Desa di Kecamatan Tirtajaya, 2018 / <i>Number of Photocopying and Workshop Business Units by Village in Tirtajaya Subdistrict, 2018</i>	88
Tabel / Table	4.3.1	Panjang Jalan menurut Status Pengelola dan Desa di Kecamatan Tirtajaya, 2018 / <i>Road Length according to Status of Managers and Villages in Tirtajaya Subdistrict, 2018</i>	89
Tabel / Table	4.3.2	Panjang Jalan menurut Jenis Permukaan dan Desa di Kecamatan Tirtajaya, 2018 / <i>Road Length by Surface Type and Village in Tirtajaya Subdistrict, 2018</i>	90
Tabel / Table	4.3.3	Persentase Kondisi Jalan menurut Desa di Kecamatan Tirtajaya, 2018 / <i>percentage of Road Conditions by Village in Tirtajaya Subdistrict, 2018</i>	91
Tabel / Table	4.3.4	Jumlah Telepon Umum, Wartel, Warnet dan Kantor Pos menurut Desa di Kecamatan Tirtajaya, 2018 / <i>Number of Public Telephone, Wartel, Warnet and Post Offices by Village in Tirtajaya Subdistrict, 2018</i>	92
Tabel / Table	4.3.5	Jumlah Sarana Angkutan yang Beroperasi/Digunakan menurut Jenis dan Desa di Kecamatan Tirtajaya, 2018 / <i>Number of Transportation Facilities Operating / Used by Type and Village in Tirtajaya Subdistrict, 2018</i>	93
Tabel / Table	4.3.6	Sarana Transmisi dan Kekuatan Sinyal Telekomunikasi menurut Desa di Kecamatan Tirtajaya, 2018 / <i>Transmission Facilities and Signal Strength of Telecommunications by Village in Tirtajaya Subdistrict, 2018</i>	94
Tabel / Table	5.1.1	Luas Wilayah, Jumlah Rumah Tangga, Jumlah Penduduk, dan Tingkat Kepadatan Penduduk menurut Desa di Kecamatan Tirtajaya, 2018/ <i>Area, Number of Households, Number of Population, and Population Density by Village in Tirtajaya District, 2018</i>	100
Tabel / Table	5.1.2	Jumlah Penduduk menurut Desa dan Jenis Kelamin, serta Sex Ratio di Kecamatan Tirtajaya, 2018 Table 5.1.2 Number of Population by Village and Gender, and Sex Ratio in Tirtajaya District, 2018	101
Tabel / Table	5.1.3	Jumlah Penduduk Menurut Kelompok Umur di Kecamatan Tirtajaya, 2018/ <i>Number of Populations by Age Group in Tirtajaya District, 2018</i>	102
Tabel / Table	5.1.4	Laju Pertumbuhan Penduduk menurut Desa di Kecamatan Tirtajaya, 2016-2018/ <i>Population Growth Rate by Village in Tirtajaya District, 2016-2018</i>	103

Tabel / Table	5.2.1	Keberadaan Kantor PJTKI dan Agen Penyalur Tenaga Kerja menurut Desa di Kecamatan Tirtajaya, 2018 / <i>Existence of Indonesian labor service providers Offices and Labor Distribution Agencies by Village in Tirtajaya Subdistrict, 2018</i>	104
Tabel / Table	5.2.2	Jumlah TKI menurut Desa dan Jenis Kelamin di Kecamatan Tirtajaya, 2018 / <i>Number of Indonesian Migrant Workers by Village and Sex in Tirtajaya Subdistrict, 2018</i>	105
Tabel / Table	5.2.3	Jumlah TKI menurut Kawasan Negara Tujuan dan Desa di Kecamatan Tirtajaya, 2018 / <i>Number of Indonesian Migrant Workers by Region of Destination Country and Village in Tirtajaya Subdistrict, 2018</i>	106
Tabel / Table	6.1.1	Keadaan Desa Berdasarkan Status Hukum di Kecamatan Tirtajaya, 2018 / <i>Village Conditions Based on Legal Status in Tirtajaya Subdistrict, 2018</i>	110
Tabel / Table	6.1.2	Status dan Klasifikasi Desa di Kecamatan Tirtajaya, 2018 / <i>Village Classification and Status in Tirtajaya Subdistrict, 2018</i>	111
Tabel / Table	6.1.3	Klasifikasi Desa di Kecamatan Tirtajaya, 2018/ <i>Village Classification in Tirtajaya Subdistrict, 2018</i>	112
Tabel / Table	6.1.4	Banyaknya Dusun, Rukun Warga dan Rukun Tetangga menurut Desa di kecamatan Tirtajaya, 2018/ <i>Number of hamlets, neighborhood groups and neighborhood units by village in Tirtajaya Subdistrict, 2018</i>	113
Tabel / Table	6.1.5	Jumlah Hansip menurut Status Tugas dan desa di Kecamatan Tirtajaya, 2018 / <i>Number of Hansip by Task Status and villages in Tirtajaya Subdistrict, 2018</i>	114
Tabel / Table	6.1.6	Jumlah Sarana Keamanan Lingkungan menurut Desa di Kecamatan Tirtajaya, 2018 / <i>Number of Environmental Safety Facilities by Village in Tirtajaya Subdistrict, 2018</i>	115
Tabel / Table	6.1.7	Nama Kepala Desa, Umur, dan Pendidikan Tertinggi yang Ditamatkan menurut Desa di Kecamatan Tirtajaya, 2018 / <i>Name of Village Head, Age, and Highest Education Completed by Village in Tirtajaya Subdistrict, 2018</i>	116
Tabel / Table	6.1.8	Keberadaan Lokasi Sarana Perkantoran menurut Desa di Kecamatan Tirtajaya, 2018/ <i>Existence of Office Facilities Locations by Village in Tirtajaya Subdistrict, 2018</i>	117
Tabel / Table	7.1.1	Banyaknya Lembaga Keuangan menurut Jenis dan Desa di Kecamatan Tirtajaya, 2018/ <i>Number of Financial Institutions by Type and Village in Tirtajaya Subdistrict, 2018</i>	122
Tabel / Table	7.1.2	Banyaknya Fasilitas Perkreditan Usaha yang Diterima menurut Jenis dan Desa di Kecamatan Tirtajaya, 2018 / <i>Number of Business Credit Facilities Received by Type and Village in Tirtajaya Subdistrict, 2018</i>	123

Tabel / Table	7.1.3	Banyaknya Tenaga Kerja Sektor Jasa Keuangan menurut Jenis dan Desa di Kecamatan Tirtajaya, 2018 / <i>Number of Workers in the Financial Services Sector by Type and Village in Tirtajaya Subdistrict, 2018</i>	124
---------------	-------	--	-----

<https://karawangkab.bps.go.id>

PENJELASAN UMUM/ EXPLANATORY NOTES

Tanda-tanda, satuan-satuan, dan lain-lainnya yang digunakan dalam publikasi ini adalah sebagai berikut:

Symbols, measurement units, and acronyms which are used in this publication, are as follows:

1. TANDA-TANDA/ SYMBOLS

Data tidak tersedia/ <i>Data not available</i>	: ...
Tidak ada atau nol/ <i>Null or zero</i>	: -
Data dapat diabaikan/ <i>Data negligible</i>	: 0
Tanda desimal/ <i>Decimal point</i>	: ,
Data tidak dapat ditampilkan/ <i>Not applicable</i>	: NA
Angka perkiraan/ <i>Estimated figures</i>	: e
Angka sementara/ <i>Preliminary figures</i>	: x
Angka sangat sementara/ <i>Very preliminary figures</i>	: xx
Angka diperbaiki/ <i>Revised figured</i>	: r

2. SATUAN/ UNITS

Barel/ <i>Barrel</i>	= 158,99 liter/ <i>litres</i> = 1/6,2898 m ³
Hektar (ha)/ <i>Hectare (ha)</i>	= 10 000 m ²
Kilometer (km)/ <i>Kilometers (km)</i>	= 1 000 meter/ <i>meters (m)</i>
Knot/ <i>Knot</i>	= 1,8523 km/jam (<i>km/hour</i>)
Kuintal/ <i>Quintal</i>	= 100 kg
KWh	= 1 000 Watt <i>hour</i>
MWh	= 1 000 KWh
Liter (untuk beras)/ <i>Litre (for rice)</i>	= 0,80 kg
Ons/ <i>Ounce</i>	= 28,31 gram/ <i>grams</i>
Ton	= 1 000 kg

Satuan lain: buah, dus, butir, helai/lembar, kaleng, batang, pulsa, ton kilometer(ton-km), jam, menit, persen(%).

Other units: unit, pack, pieces, sheet, tin, pulse, ton-kilometres(ton-km), hour, minute, percent (%).

Perbedaan angka di belakang koma disebabkan oleh pembulatan angka.

The difference in decimal numbers is caused by rounding.

BAB 1
GEOGRAFI DAN IKLIM
GEOGRAPHY AND CLIMATE



<https://karawangkab.go.id>

ULASAN

DESCRIPTION

Kecamatan Tirtajaya memiliki luas wilayah 92,25 km² yang terbagi atas 11 desa. Desa yang memiliki lahan terluas adalah Desa Tambaksumur dengan luas 17,04 km² atau 18,47 % dari luas wilayah Kecamatan. Tirtajaya. Sedangkan Desa Gempolkarya adalah desa yang luas wilayahnya terkecil yaitu 2,91 km² atau 3,15 % dari luas wilayah Kecamatan.

Secara geografis Kecamatan Tirtajaya terletak di bagian utara Kabupaten Karawang. Letak geografis Kecamatan Tirtajaya berada pada jarak 8 Km dari pantai utara Pulau Jawa dengan ketinggian 3 meter dari permukaan laut. Secara administratif Kecamatan Tirtajaya mempunyai batas-batas wilayah sebagai berikut :

- Sebelah Utara berbatasan langsung dengan Pantai Utara.
- Sebelah Timur berbatasan dengan Kecamatan Cibuaya.
- Sebelah Selatan berbatasan dengan Kecamatan Jayakarta.
- Sebelah Barat berbatasan dengan Kecamatan Batujaya.

Tirtajaya Subdistrict has an area of 92.25 km² which is divided into 11 villages. The village that has the largest land area is Tambaksumur Village with an area of 17,04 km² or 18,47 % of the total area of the District. Tirtajaya. While Gempolkarya Village is the village with the smallest area, which is 2,91 km² or 3,15 % of the total area of the Subdistrict.

Geographically, Tirtajaya Subdistrict is located in the northern part of Karawang Regency. The geographical position of Tirtajaya Subdistrict is at a distance of 8 Km from the north coast of Java Island with a height of 3 meters above sea level. Administratively, Tirtajaya Subdistrict has the following territorial boundaries:

- *The north is directly adjacent to the North Coast.*
- *East side is bordered by Cibuaya Subdistrict.*
- *South side is bordered by Jayakarta Subdistrict.*
- *West side is bordered by Batujaya Subdistrict.*

1. Geografi dan Iklim/ *Geography and Climate*

1.1 Keadaan Geografi/ *Geography Condition*

Tabel 1.1.1 Luas Daerah menurut Kelurahan/Desa, 2018
Table Total Area by Kelurahan/Village, 2018

Kelurahan/Desa Kelurahan/Village	Luas ¹ (km ²) Total Area 1 (square.km)	Persentase terhadap Luas Kecamatan Percentage to Sub District's Area
(1)	(2)	(3)
001 Medankarya	9,62	10,43%
002 Pisangsambo	5,69	6,17%
003 Sabajaya	5,44	5,90%
004 Gempolkarya	2,91	3,15%
005 Srijaya	5,70	6,18%
006 Kutamakmur	4,21	4,56%
007 Bolang	4,79	5,19%
008 Srikamulyan	7,29	7,90%
009 Sumurlaban	4,81	5,21%
010 Tambaksumur	17,04	18,47%
011 Tambaksari	24,75	26,83%
Tirtajaya	92,25	100,00%

Catatan/Note: Berdasarkan Peraturan Menteri dalam negeri Nomor 137 Tahun 2017 tanggal 29 Desember 2017/ Based on Minister of Home Affairs Regulation Number 137/2017, December 29, 2017

Sumber/ Source: Kementerian dalam Negeri/ Ministry of Home Affairs

Tabel
Table 1.1.2

Letak Astronomis dan Jarak Tempuh ke Ibukota Kecamatan dan Ibukota Kabupaten menurut Desa di Kecamatan Tirtajaya, 2018
Astronomical Location and Distance to Subdistrict Capital and Regeny Capital by Village in Tirtajaya Subdistrict, 2018

	Desa/ Village	Letak Astronomis/ Astronomy Location	Jarak ke (Km) / Distance to	
			Ibukota Kecamatan/ Subdistrict Capital	Ibukota Kabupaten/ Regeny Capital
	(1)	(2)	(3)	(4)
001	Medankarya	-6,06643 LS 107,23165 BT	5,60	40,50
002	Pisangsambo	-6,09896 LS 107,25192 BT	7,00	31,00
003	Sabajaya	-6,05445 LS 107,24766 BT	0,80	37,00
004	Gempolkarya	-6,07353 LS 107,25983 BT	4,80	34,40
005	Srijaya	-6,0569 LS 107,28153 BT	2,50	40,20
006	Kutamakmur	-6,06412 LS 107,28906 BT	6,60	40,50
007	Bolang	-6,07355 LS 107,29772 BT	9,10	38,00
008	Srikamulyan	-6,04767 LS 107,28954 BT	7,10	42,40
009	Sumurlaban	-6,04702 LS 107,2625 BT	1,80	39,60
010	Tambaksumur	-6,03668 LS 107,24904 BT	0,80	36,60
011	Tambaksari	-6,01465 LS 107,23892 BT	4,20	41,70

Sumber/ Source: Kantor Desa di Kecamatan Tirtajaya/ Village Office in Tirtajaya Subdistrict

Tabel
Table 1.1.3

Letak Geografis dan Batas-Batas Menurut Arah Mata Angin menurut Desa di Kecamatan Tirtajaya, 2018
Geographical Location and Boundaries According to Wind Direction by Village in Tirtajaya Subdistrict, 2018

		Batas Sebelah / Adjoining Border			
Desa/ Village		Utara/ Northern Border	Selatan/ Southern Border	Barat/ Western Border	Timur/ Eastern Border
(1)		(2)	(3)	(4)	(5)
001	Medankarya	Tambaksari	Karyamakmur	Karyabakti	Sabajaya
002	Pisangsambo	Sabajaya	Kutaampel	Kutaampel	Gempolkarya
003	Sabajaya	Tambaksumur	Pisangsambo	Medankarya	Sumurlaban
004	Gempolkarya	Sumurlaban	Kampungsawah	Pisangsambo	Srijaya
005	Srijaya	Srikamulyan	Gempolkarya	Sumurlaban	Kutamakmur
006	Kutamakmur	Srikamulyan	Kampungsawah	Srijaya	Bolang
007	Bolang	Srikamulyan	Kampungsawah	Kutamakmur	Kertajaya
008	Srikamulyan	Sedari	Kedungjeruk	Tambaksumur	Kutamakmur
009	Sumurlaban	Tambaksumur	Gempolkarya	Sabajaya	Srijaya
010	Tambaksumur	Laut Jawa	Sabajaya	Tambaksari	Srikamulyan
011	Tambaksari	Laut Jawa	Tambaksumur	Karyabakti	Tambaksumur

Sumber/ Source: Kantor Desa di Kecamatan Tirtajaya/ Village Office in Tirtajaya Subdistrict

Tabel
Table 1.1.4

Topografi Wilayah Menurut Desa dan Jenis Klasifikasi di Kecamatan Tirtajaya, 2018
Regional Topography by Village and Classification Type in Tirtajaya Subdistrict, 2018

		Pola Hamparan / Overlay Pattern				
Desa/ Village		Pesisir/ Coast	Non Pesisir/ Non Coastal	Dataran/ Plain	Lereng/ Slope	Perbukitan/ Hills
(1)		(2)	(3)	(4)	(5)	(6)
001	Medankarya	-	1	1	-	-
002	Pisangsambo	-	1	1	-	-
003	Sabajaya	-	1	1	-	-
004	Gempolkarya	-	1	1	-	-
005	Srijaya	-	1	1	-	-
006	Kutamakmur	-	1	1	-	-
007	Bolang	-	1	1	-	-
008	Srikamulyan	-	1	1	-	-
009	Sumurlaban	-	1	1	-	-
010	Tambaksumur	1	-	1	-	-
011	Tambaksari	1	-	1	-	-

Sumber/ Source: Kantor Desa di Kecamatan Tirtajaya/ Village Office in Tirtajaya Subdistrict

Tabel 1.1.5 **Tinggi Wilayah di Atas Permukaan Laut (meter DPL) menurut desa di Kecamatan Tirtajaya, 2018**
Table 1.1.5 **Region Height above Sea Level (meter DPL) by village in Tirtajaya Subdistrict, 2018**

Desa/ Village		Tinggi / Height (meter DPL)
	(1)	(2)
001	Medankarya	5
002	Pisangsambo	6
003	Sabajaya	7
004	Gempolkarya	7
005	Srijaya	5
006	Kutamakmur	4
007	Bolang	5
008	Srikamulyan	5
009	Sumurlaban	7
010	Tambaksumur	2
011	Tambaksari	2

Sumber/ Source: Kantor Desa di Kecamatan Tirtajaya/ Village Office in Tirtajaya Subdistrict

Tabel
Table 1.2.1

Curah Hujan dan Jumlah Hari Hujan menurut Desa dan Bulan di Kecamatan Tirtajaya, 2018
Rainfall and Number of Rainy Days by Village and Month in Tirtajaya Subdistrict, 2018

Bulan/ Month	Curah Hujan / Rainfall (mm)	Jumlah Hari Hujan/ Total of Rainy Days
(1)	(2)	(3)
Januari/ January	106	10
Februari/ February	341	19
Maret/ March	165	8
April	141	8
Mei/ May	95	5
Juni/ June	63	3
Juli/ July	0	0
Agustus/ August	0	0
September	0	0
Oktober/ October	39	4
November	27	2
Desember/ December	101	5
Tirtajaya	90	5

Sumber/ Source: Kantor Desa di Kecamatan Tirtajaya/ Village Office in Tirtajaya Subdistrict

BAB 2

SOSIAL DAN KESEJAHTERAAN RAKYAT

SOCIAL AND WELFARE



ULASAN

DESCRIPTION

Pemerintahan di Kecamatan Tirtajaya hampir merata disetiap pedesaannya yang mana sistem pemerintahan daerah di atur dalam sistem pemerintahan Otonomi Daerah Jawa barat dan memberikan kebijakan di daerah yang pengawasannya di bantu oleh kepala Daerah tingkat II/ Bupati.

The administration in Tirtajaya Subdistrict is almost evenly distributed in every village where the regional government system is regulated in the West Java Regional Autonomy system and provides policies in the regions whose supervision is assisted by the head of the Regional Level II / Regent.

Kecamatan Tirtajaya secara administratif terdiri atas 11 desa, 49 dusun, 51 Rukun warga dan 135 Rukun Tetangga.

Administratively, Tirtajaya subdistrict consists of 11 villages, 49 hamlets, 51 residents and 135 neighborhood units.

Nama-nama desa di Kecamatan Tirtajaya

The names of villages in Tirtajaya Subdistrict

1. Desa Medankarya
2. Desa Pisangsambo
3. Desa Sabajaya
4. Desa Gempolkarya
5. Desa Srijaya
6. Desa Kutamakmur
7. Desa Bolang
8. Desa Srikamulyan
9. Desa Sumurlaban
10. Desa Tambaksumur
11. Desa Tambaksari

1. Medankarya Village
2. Pisangsambo Village
3. Sabajaya Village
4. Gempolkarya Village
5. Srijaya Village
6. Kutamakmur Village
7. Bolang Village
8. Srikamulyan Village
9. Sumurlaban Village
10. Tambaksumur Village
11. Tambaksari Village

2 Sosial dan Kesejahteraan Rakyat/*Social and Welfare*

2.1 Pendidikan/*Education*

Tabel 2.1.1 Jumlah Desa/Kelurahan yang Memiliki Fasilitas Sekolah Menurut Kelurahan/Desa dan Tingkat Pendidikan, 2016-2018
Number of Villages/Kelurahan Having Educational Facilities by Province and Educational Level, 2016-2018

	Kelurahan/Desa <i>Regency/Minucipality</i>	SD <i>Primary School</i>			SMP <i>Junior High School</i>		
		2016	2017	2018	2016	2017	2018
	(1)	(2)	(3)	(4)	(5)	(6)	(7)
001	Medankarya	4	4	4	1	1	1
002	Pisangsambo	3	3	3	1	1	1
003	Sabajaya	3	3	3	-	-	-
004	Gempolkarya	2	2	2	-	-	-
005	Srijaya	3	3	3	1	1	1
006	Kutamakmur	1	1	1	-	-	-
007	Bolang	2	2	2	-	-	-
008	Srikamulyan	3	3	3	-	-	-
009	Sumurlaban	2	2	2	-	-	-
010	Tambaksumur	4	4	4	1	1	1
011	Tambaksari	3	3	3	-	-	-
	Tirtajaya	30	30	30	4	4	4

Catatan/Note: ¹Desa pada tabel ini termasuk Unit Pemukiman Transmigrasi (UPT) yang masih dibina oleh kementerian terkait dan nagari di Provinsi Sumatera Barat/*Village in this table include Transmigration Settlement Unit which is still fostered by the relevant ministries and the nagari in the Province of Sumatera Barat*

Sumber/ Source: BPS, Pendataan Potensi Desa (Podes)/BPS-Statistics Indonesia, *Village Potential Data Collection*

Lanjutan tabel/ *Continued Table 2.1.1*

Kelurahan/Desa <i>Regency/Minucipality</i>	SMA <i>Senior High School</i>			SMK <i>Vocational School</i>		
	2016 (8)	2017 (9)	2018 (10)	2016 (11)	2017 (12)	2018 (13)
(1)						
001 Medankarya	-	-	-	-	-	-
002 Pisangsambo	-	-	-	1	1	1
003 Sabajaya	-	-	-	1	1	1
004 Gempolkarya	-	-	-	-	-	-
005 Srijaya	-	-	-	-	-	-
006 Kutamakmur	-	-	-	-	-	-
007 Bolang	-	-	-	-	-	-
008 Srikamulyan	-	-	-	-	-	-
009 Sumurlaban	-	1	1	-	-	-
010 Tambaksumur	-	-	-	-	-	-
011 Tambaksari	-	-	-	-	-	-
Tirtajaya	-	1	1	2	2	2

Catatan/Note: ¹Desa pada tabel ini termasuk Unit Pemukiman Transmigrasi (UPT) yang masih dibina oleh kementerian terkait dan nagari di Provinsi Sumatera Barat/*Village in this table include Transmigration Settlement Unit which is still fostered by the relevant ministries and the nagari in the Province of Sumatera Barat*

Sumber/ Source: BPS, Pendataan Potensi Desa (Podes)/*BPS-Statistics Indonesia, Village Potential Data Collection*

Lanjutan tabel/ *Continued Table 2.1.1*

Kelurahan/Desa Kelurahan/Village		Perguruan Tinggi/University		
		2016	2017	2018
(1)		(14)	(15)	(16)
001	Medankarya	-	-	-
002	Pisangsambo	-	-	-
003	Sabajaya	-	-	-
004	Gempolkarya	-	-	-
005	Srijaya	-	-	-
006	Kutamakmur	-	-	-
007	Bolang	-	-	-
008	Srikamulyan	-	-	-
009	Sumurlaban	-	-	-
010	Tambaksumur	-	-	-
011	Tambaksari	-	-	-
Tirtajaya		-	-	-

Catatan/Note: ¹Desa pada tabel ini termasuk Unit Pemukiman Transmigrasi (UPT) yang masih dibina oleh kementerian terkait dan nagari di Provinsi Sumatera Barat/Village in this table include Transmigration Settlement Unit which is still fostered by the relevant ministries and the nagari in the Province of Sumatera Barat

Sumber/ Source: BPS, Pendataan Potensi Desa (Podes)/BPS-Statistics Indonesia, Village Potential Data Collection

Tabel
Table 2.1.2

Jumlah Murid, Guru dan Rombongan Belajar Tingkat SD Dan Sederajat menurut Desa di Kecamatan Tirtajaya, 2018
Number of Pupils, Teachers and Study Groups at Primary School and Equal by Village in Tirtajaya Subdistrict, 2018

SD dan Sederajat/ Primary School and Equal				
Desa/ Village		Murid/ Pupils	Guru/ Teachers	Rombel/ Study Groups
	[1]	[8]	[9]	[10]
001	Medankarya	608	28	24
002	Pisangsambo	709	24	24
003	Sabajaya	523	22	20
004	Gempolkarya	387	17	15
005	Srijaya	554	17	18
006	Kutamakmur	323	14	12
007	Bolang	446	17	14
008	Srikamulyan	827	24	23
009	Sumurlaban	472	17	15
010	Tambaksumur	860	43	30
011	Tambaksari	685	23	18
	Tirtajaya	6.394	246	213

Sumber/Source: <http://dapo.dikdasmen.kemdikbud.go.id>

Tabel
Table 2.1.3

Jumlah Murid, Guru dan Rombongan Belajar Tingkat SLTP dan Sederajat menurut Desa di Kecamatan Tirtajaya, 2018
Number of Pupils, Teachers and Study Groups at Junior High School and Equal by Village in Tirtajaya Subdistrict, 2018

SLTP dan Sederajat/ Junior High School and Equal				
Desa/ Village		Murid/ Pupils	Guru/ Teachers	Rombel/ Study Groups
[1]	[8]	[9]	[10]	
001	Medankarya	287	4	9
002	Pisangsambo	2	39	39
003	Sabajaya	-	-	-
004	Gempolkarya	-	-	-
005	Srijaya	715	21	18
006	Kutamakmur	-	-	-
007	Bolang	-	-	-
008	Srikamulyan	-	-	-
009	Sumurlaban	-	-	-
010	Tambaksumur	857	27	19
011	Tambaksari	-	-	-
Tirtajaya		1.861	91	85

Sumber/Source: <http://dapo.dikdasmen.kemdikbud.go.id>

Tabel
Table 2.1.4

Jumlah Murid, Guru dan Rombongan Belajar Tingkat SMA dan Sederajat menurut Desa di Kecamatan Tirtajaya, 2018
Number of Pupils, Teachers and Study Groups at Senior High School and Equal by Village in Tirtajaya District, 2018

SMA dan Sederajat/ Senior High School and Equal				
Desa/ Village		Murid/ Pupils	Guru/ Teachers	Rombel/ Study Groups
[1]		[11]	[12]	[13]
001	Medankarya	-	-	-
002	Pisangsambo	1	50	32
003	Sabajaya	96	2	3
004	Gempolkarya	-	-	-
005	Srijaya	-	-	-
006	Kutamakmur	-	-	-
007	Bolang	-	-	-
008	Srikamulyan	-	-	-
009	Sumurlaban	453	15	14
010	Tambaksumur	-	-	-
011	Tambaksari	-	-	-
Tirtajaya		550	67	49

Sumber/Source: <http://dapo.dikdasmen.kemdikbud.go.id>

2 Sosial dan Kesejahteraan Rakyat/*Social and Welfare*

2.2 Kesehatan/*Health*

Tabel 2.2.1 Jumlah Desa/Kelurahan Yang Memiliki Sarana Kesehatan Menurut Kelurahan/Desa, 2016-2018
 Table 2.2.1 Number of Village Having Health Facilities by Kelurahan/Village, 2016-2018

	Kelurahan/Desa <i>Regency/Minucipality</i>	Rumah Sakit <i>Hospital</i>			Rumah Sakit Bersalin <i>Maternity Hospital</i>		
		2016	2017	2018	2016	2017	2018
	(1)	(2)	(3)	(4)	(5)	(6)	(7)
001	Medankarya	-	-	-	-	-	-
002	Pisangsambo	-	-	-	-	-	-
003	Sabajaya	-	-	-	-	-	-
004	Gempolkarya	-	-	-	-	-	-
005	Srijaya	-	-	-	-	-	-
006	Kutamakmur	-	-	-	-	-	-
007	Bolang	-	-	-	-	-	-
008	Srikamulyan	-	-	-	-	-	-
009	Sumurlaban	-	-	-	-	-	-
010	Tambaksumur	-	-	-	-	-	-
011	Tambaksari	-	-	-	-	-	-
	Tirtajaya	-	-	-	-	-	-

Catatan/Note: ¹Desa pada tabel ini termasuk Unit Pemukiman Transmigrasi (UPT) yang masih dibina oleh kementerian terkait dan nagari di Provinsi Sumatera Barat/*Village in this table include Transmigration Settlement Unit which is still fostered by the relevant ministries and the nagari in the Province of Sumatera Barat*

Sumber/ Source: BPS, Pendataan Potensi Desa (Podes)/*BPS-Statistics Indonesia, Village Potential Data Collection*

Lanjutan tabel/ *Continued Table 2.2.1*

	Kelurahan/Desa <i>Regency/Minucipality</i>	Poliklinik <i>Polyclinic</i>			Puskesmas <i>Public Health Center</i>		
		2016	2017	2018	2016	2017	2018
	(1)	(8)	(9)	(10)	(11)	(12)	(13)
001	Medankarya	-	-	-	-	-	-
002	Pisangsambo	1	1	1	-	-	-
003	Sabajaya	-	-	-	1	1	1
004	Gempolkarya	-	-	-	-	-	-
005	Srijaya	-	-	1	-	-	-
006	Kutamakmur	1	1	-	-	-	-
007	Bolang	1	1	1	-	-	-
008	Srikamulyan	-	-	-	-	-	-
009	Sumurlaban	-	-	-	-	-	-
010	Tambaksumur	-	-	-	-	-	-
011	Tambaksari	-	-	-	-	-	-
	Tirtajaya	3	3	3	1	1	1

Catatan/Note: ¹Desa pada tabel ini termasuk Unit Pemukiman Transmigrasi (UPT) yang masih dibina oleh kementerian terkait dan nagari di Provinsi Sumatera Barat/*Village in this table include Transmigration Settlement Unit which is still fostered by the relevant ministries and the nagari in the Province of Sumatera Barat*

Sumber/ Source: BPS, Pendataan Potensi Desa (Podes)/*BPS-Statistics Indonesia, Village Potential Data Collection*

Lanjutan tabel/ *Continued Table 2.2.1*

	Kelurahan/Desa <i>Regency/Minucipality</i>	Puskesmas Pembantu <i>Subsidiary of Public Health Center</i>			Apotek Pharmacy		
		2016	2017	2018	2016	2017	2018
	(1)	(14)	(15)	(16)	(17)	(18)	(19)
001	Medankarya	-	-	-	-	-	-
002	Pisangsambo	1	1	1	-	-	-
003	Sabajaya	-	-	-	-	-	-
004	Gempolkarya	-	-	-	-	-	-
005	Srijaya	1	1	1	-	-	-
006	Kutamakmur	-	-	-	-	1	1
007	Bolang	1	1	1	-	-	-
008	Srikamulyan	-	-	-	-	-	-
009	Sumurlaban	-	-	-	-	-	-
010	Tambaksumur	1	1	1	1	1	1
011	Tambaksari	-	-	-	-	-	-
	Tirtajaya	4	4	4	1	2	2

Catatan/Note:

¹Desa pada tabel ini termasuk Unit Pemukiman Transmigrasi (UPT) yang masih dibina oleh kementerian terkait dan nagari di Provinsi Sumatera Barat/*Village in this table include Transmigration Settlement Unit which is still fostered by the relevant ministries and the nagari in the Province of Sumatera Barat*

Sumber/ Source:

BPS, Pendataan Potensi Desa (Podes)/BPS-Statistics Indonesia, Village Potential Data Collection

Tabel 2.2.2 Jumlah Tenaga Kesehatan Menurut Kelurahan/Desa, 2018
Table Number of Medicinal Personnel by Kelurahan/Village, 2018

	Kelurahan/Desa Kelurahan/Village	Dokter Doctor	Perawat Nurse	Bidan Midwife	Farmasi Pharmaceutical	Ahli Gizi Nutritionist
	(1)	(2)	(3)	(4)	(5)	(6)
001	Medankarya	1	2	4
002	Pisangsambo	-	2	4
003	Sabajaya	2	2	3
004	Gempolkarya	-	1	2
005	Srijaya	-	2	2
006	Kutamakmur	1	-	3
007	Bolang	-	1	2
008	Srikamulyan	-	1	2
009	Sumurlaban	-	-	2
010	Tambaksumur	1	-	2
011	Tambaksari	-	1	3
	Tirtajaya	5	12	29

Catatan/Note: -

Sumber/Source: Unit Pelayanan Terpadu Kesehatan Kecamatan Tirtajaya / *Integrated Health Services Unit Of Tirtajaya sub-district*

Tabel 2.2.3 Jumlah Rumah Sakit Umum, Rumah Sakit Khusus, dan Puskesmas Menurut Kelurahan/Desa, 2017 dan 2018
Table 2.2.3 *Number of General Hospital, Special Hospital, and Public Health Center by Kelurahan/Village, 2017 and 2018*

Kelurahan/Desa <i>Regency/Minucipality</i>	Rumah Sakit Umum <i>General Hospital</i>		Rumah Sakit Khusus <i>Special Hospital</i>		Rumah Sakit Bersalin/Rumah Bersalin <i>Maternity Hospital</i>		Puskesmas <i>Public Health Center</i>	
	2017	2018	2017	2018	2017	2018	2017	2018
	(1)	(2)	(3)	(4)	(5)	(6)	(7)	(8)
001 Medankarya	-	-	-	-	-	-	-	-
002 Pisangsambo	-	-	-	-	-	-	-	-
003 Sabajaya	-	-	-	-	-	-	1	1
004 Gempolkarya	-	-	-	-	-	-	-	-
005 Srijaya	-	-	-	-	-	-	-	-
006 Kutamakmur	-	-	-	-	-	-	-	-
007 Bolang	-	-	-	-	-	-	-	-
008 Srikamulyan	-	-	-	-	-	-	-	-
009 Sumurlaban	-	-	-	-	-	-	-	-
010 Tambaksumur	-	-	-	-	-	-	-	-
011 Tambaksari	-	-	-	-	-	-	-	-
Tirtajaya	-	-	-	-	-	-	1	1

Catatan/Note: -

Sumber/ Source: Unit Pelayanan Terpadu Kesehatan Kecamatan Tirtajaya / *Integrated Health Services Unit Of Tirtajaya sub-district*

Lanjutan tabel/ *Continued Table 2.2.3*

	Kelurahan/Desa <i>Kelurahan/Village</i>	Klinik/Balai Kesehatan <i>Clinic/Health Center</i>		Posyandu <i>Maternal & Child Health Center</i>		Polindes <i>Village Maternity</i>	
		2017	2018	2017	2018	2017	2018
	(1)	(10)	(11)	(12)	(13)	(14)	(15)
001	Medankarya	...	-	3	3	-	-
002	Pisangsambo	...	1	4	4	-	-
003	Sabajaya	...	-	5	5	-	-
004	Gempolkarya	...	-	4	4	-	-
005	Srijaya	...	1	4	4	-	-
006	Kutamakmur	...	-	3	3	-	-
007	Bolang	...	1	3	3	-	-
008	Srikamulyan	...	-	3	3	-	-
009	Sumurlaban	...	-	4	4	-	-
010	Tambaksumur	...	-	5	5	-	-
011	Tambaksari	...	-	5	5	-	-
Tirtajaya		-	3	43	43	-	-

Catatan/Note: -

Sumber/ Source: Unit Pelayanan Terpadu Kesehatan Kecamatan Tirtajaya / *Integrated Health Services Unit Of Tirtajaya sub-district*

Tabel
Table 2.2.4

Jumlah Kelahiran dan Kematian Bayi, serta Kematian Ibu Hamil menurut Desa di Kecamatan Tirtajaya, 2018

Number of Births and Deaths of Babies, and Deaths of Pregnant Women by Village in Tirtajaya Subdistrict, 2018

Desa/ Village	Kelahiran/ Birth	Kematian Bayi/ Death	AKB/ infant mortality rate	Kematian Ibu Hamil/ Dead of Pregnancy Woman	AKI/ maternal mortality rate
[1]	[2]	[3]	[4]	[5]	[6]
001 Medankarya	115	-	-	-	-
002 Pisangsambo	125	-	-	-	-
003 Sabajaya	120	-	-	-	-
004 Gempolkarya	119	-	-	-	1
005 Srijaya	120	-	-	-	-
006 Kutamakmur	105	-	-	-	-
007 Bolang	105	-	-	-	-
008 Srikamulyan	139	-	-	-	-
009 Sumurlaban	102	-	-	-	-
010 Tambaksumur	119	-	-	-	-
011 Tambaksari	121	-	-	-	-
Tirtajaya	1.290	-	-	-	1

Sumber/Source: Unit Pelayanan Terpadu Kesehatan Kecamatan Tirtajaya / *Integrated Health Services Unit Of Tirtajaya sub-district*

Tabel
Table 2.2.5

Jumlah Balita Yang Mengalami Gizi Buruk menurut Desa di Kecamatan Tirtajaya, 2018
Number of Toddlers Who Have Malnutrition by Village in Tirtajaya Subdistrict, 2018

Desa/ Village	Kekurangan Protein (KEP)/ Protein Deficiency (PEM)	Kekurangan Yodium (GAKY)/ Iodine Deficiency (IDD)	Kekurangan Zat Besi (ADB)/ Iron Deficiency Anemia	Kekurangan Vitamin A (KVA)/ Vitamin A deficiency (KVA)	Lainnya/ Others
[1]	[2]	[3]	[4]	[5]	[6]
001 Medankarya	1	-	-	-	-
002 Pisangsambo	-	-	-	-	-
003 Sabajaya	-	-	-	-	-
004 Gempolkarya	1	-	-	-	-
005 Srijaya	-	-	-	-	-
006 Kutamakmur	-	-	-	-	-
007 Bolang	-	-	-	-	-
008 Srikamulyan	1	-	-	-	-
009 Sumurlaban	-	-	-	-	-
010 Tambaksumur	-	-	-	-	-
011 Tambaksari	1	-	-	-	-
Tirtajaya	4	-	-	-	-

Sumber/Source:

Unit Pelayanan Terpadu Kesehatan Kecamatan Tirtajaya / *Integrated Health Services Unit Of Tirtajaya sub-district*

Tabel 2.2.6 **Jumlah Rumah Tangga, PUS, Akseptor KB dan Rasio Akseptor KB terhadap PUS menurut Desa di Kecamatan Tirtajaya, 2018**
Table 2.2.6 **Number of Households, Couples of Childbearing age, Family Planning Acceptors and Ratio of Family Planning Acceptors to Couples of Childbearing Age by Village in Tirtajaya Subdistrict, 2018**

Desa/ Village	Jumlah Rumah Tangga (KK)/ Number of Household	Jumlah Pasangan Usia Subur (PUS)/ Number of Couples of Childbearing Age	Jumlah Akseptor KB/ Number of Family Planning Acceptors	Rasio Akseptor KB terhadap PUS/ Ratio of KB acceptors to Couples of Childbearing Age
[1]	[2]	[3]	[4]	[5]
001 Medankarya	2.033	1.790	1.545	86,31%
002 Pisangsambo	3.075	2.581	2.211	85,66%
003 Sabajaya	5.014	2.411	2.109	87,47%
004 Gempolkarya	1.479	1.215	1.164	95,80%
005 Srijaya	2.223	2.199	1.912	86,95%
006 Kutamakmur	1.683	1.337	1.273	95,21%
007 Bolang	1.595	1.391	1.314	94,46%
008 Srikamulyan	2.644	2.089	1.850	88,56%
009 Sumurlaban	1.897	1.472	1.275	86,62%
010 Tambaksumur	3.080	2.423	2.067	85,31%
011 Tambaksari	2.779	2.404	2.079	86,48%
Tirtajaya	27.502	21.312	18.799	88,21%

Sumber/Source: Unit Pelayanan Terpadu Kesehatan Kecamatan Tirtajaya / Integrated Health Services Unit Of Tirtajaya sub-district

Tabel 2.2.7 Jumlah Akseptor KB menurut Jenis Alat Kontrasepsi dan Desa di Kecamatan Tirtajaya, 2018
Table 2.2.7 Number of Family Planning Acceptors By Type of Contraception and Village in Tirtajaya Subdistrict, 2018

Desa/ Village	Vasektomi /Tubektomi/ Vasectomy / Tubectomy	AKDR/IUD /Spiral/ IUD / Spiral	Suntik/ Injections	Susuk KB /Implan/ Implant	Pil KB/ Family planning pills	Kondom/ Condom	Lain nya/ Others	Jumlah Akseptor KB/ Total
[1]	[2]	[3]	[4]	[5]	[6]	[7]	[8]	[9]
001 Medankarya	1	1	20	30	20	10	-	82
002 Pisangsambo	1	1	25	30	20	5	-	82
003 Sabajaya	-	1	30	35	15	10	-	91
004 Gempolkarya	1	1	25	25	20	5	-	77
005 Srijaya	-	1	15	30	15	5	-	66
006 Kutamakmur	-	1	15	35	20	10	-	81
007 Bolang	-	1	15	30	15	5	-	66
008 Srikamulyan	-	1	20	30	20	3	-	74
009 Sumurlaban	1	1	15	25	20	5	-	67
010 Tambaksumur	-	1	20	25	25	5	-	76
011 Tambaksari	-	1	25	30	20	5	-	81
Tirtajaya	4	11	225	325	210	68	-	843

Sumber/Source: Unit Pelayanan Terpadu Kesehatan Kecamatan Tirtajaya / Integrated Health Services Unit Of Tirtajaya sub-district

2 Sosial dan Kesejahteraan Rakyat/*Social and Welfare*
 2.3 Agama dan Sosial Lainnya/*Religion and Other Social Affairs*

Jumlah Penduduk Menurut Kelurahan/Desa dan Agama yang Dianut,
 Tabel 2.3.1 2018
 Table *Population by Kelurahan/Village and Religion, 2018*

Kelurahan/Desa <i>Kelurahan/Village</i>	Islam	Protestan <i>Protestant</i>	Katolik <i>Catholic</i>	Hindu	Budha <i>Buddha</i>	Lainnya <i>Others</i>
(1)	(2)	(3)	(4)	(5)	(6)	(7)
001 Medankarya	6.291	-	-	-	-	-
002 Pisangsambo	9.386	6	1	-	-	-
003 Sabajaya	8.866	-	-	-	-	-
004 Gempolkarya	4.727	-	-	-	-	-
005 Srijaya	6.629	-	-	-	-	-
006 Kutamakmur	4.645	-	-	-	-	-
007 Bolang	5.695	2	-	-	-	-
008 Srikamulyan	7.361	-	-	-	-	-
009 Sumurlaban	4.072	-	-	-	-	-
010 Tambaksumur	7.955	-	-	-	-	-
011 Tambaksari	8.157	-	-	-	8	-
Tirtajaya	73.784	8	1	-	8	-

Catatan/Note: -

Sumber/ Source: Register Kependudukan Kecamatan Tirtajaya Januari 2019 / *Tirtajaya District Population Register January 2019*

Tabel 2.3.2 **Jumlah Tempat Peribadatan Menurut Kelurahan/Desa, 2018**
Table 2.3.2 **Number of Place of Worship by Kelurahan/Village and Religion, 2018**

Kelurahan/Desa <i>Kelurahan/Village</i>	Masjid <i>Mosque</i>	Mushola <i>Pray Room</i>	Gereja Protestan <i>Protestant Church</i>	Gereja Katholik <i>Catholic Church</i>	Pura <i>Temple</i>	Viraha
(1)	(2)	(3)	(4)	(5)	(6)	(7)
001 Medankarya	12	18	-	-	-	-
002 Pisangsambo	7	16	-	-	-	-
003 Sabajaya	6	23	-	-	-	-
004 Gempolkarya	3	8	-	-	-	-
005 Srijaya	4	15	-	-	-	-
006 Kutamakmur	2	13	-	-	-	-
007 Bolang	2	22	-	-	-	-
008 Srikamulyan	3	33	-	-	-	-
009 Sumurlaban	3	9	-	-	-	-
010 Tambaksumur	7	14	-	-	-	-
011 Tambaksari	7	20	-	-	-	-
Tirtajaya	56	191	-	-	-	-

Catatan/Note: -

Sumber/ Source: BPS, Pendataan Potensi Desa (Podes)/BPS-Statistics Indonesia, Village Potential Data Collection

Tabel 2.3.3
Table

Persentase Komposisi Suku Bangsa/Etnis Penduduk menurut Desa di Kecamatan Tirtajaya, 2018
Percentage of Ethnic / Ethnic Population Composition by Village in Tirtajaya Subdistrict, 2018

Desa/ Village	Sunda/ Sundanese	Jawa/ Javanese	Betawi	Madura	Batak	Lainnya/ Others	Jumlah/ Total
[1]	[2]	[3]	[4]	[5]	[6]	[7]	[8]
001 Medankarya	100	-	-	-	-	-	100
002 Pisangsambo	98	1	-	1	-	-	100
003 Sabajaya	100	-	-	-	-	-	100
004 Gempolkarya	95	2	3	-	-	-	100
005 Srijaya	100	-	-	-	-	-	100
006 Kutamakmur	99	-	-	-	1	-	100
007 Bolang	100	-	-	-	-	-	100
008 Srikamulyan	100	-	-	-	-	-	100
009 Sumurlaban	100	-	-	-	-	-	100
010 Tambaksumur	100	-	-	-	-	-	100
011 Tambaksari	100	-	-	-	-	-	100
Tirtajaya	99	0	0	0	0	-	100

Sumber/Source: Buku Profil Desa / Village Profile Book

Tabel
Table 2.3.4

**Jumlah Penduduk dengan Disabilitas menurut Jenis dan Desa di
Kecamatan Tirtajaya, 2018**
**Number of Population with Disabilities by Type and Village in
Tirtajaya Subdistrict, 2018**

Desa/ Village		Jenis Disabilitas/ type of disability						Jumlah/ Total	
		Tuna Netra/ Blind	Tuna Rungu- Wicara/ Deaf- Speech	Tuna Grahita/ mentally disabled	Tuna Daksa	Tuna Ganda	Tuna Susila		Lain nya/ others
[1]		[2]	[3]	[4]	[5]	[6]	[7]	[8]	[9]
001	Medankarya	2	4	-	8	-	-	-	14
002	Pisangsambo	1	1	-	-	-	-	-	2
003	Sabajaya	-	-	-	-	-	-	-	-
004	Gempolkarya				2				2
005	Srijaya	6	1	-	3	-	-	-	10
006	Kutamakmur	1	3						4
007	Bolang	10	4		3		2	-	19
008	Srikamulyan	5	6				-	2	13
009	Sumurlaban	2	4	-	-	-	3	-	9
010	Tambaksumur	5	20	-	1	-	-	-	26
011	Tambaksari	3	2	-	3	-	-	-	8
Tirtajaya		35	45	-	20	-	5	2	107

Sumber/Source: Buku Profil Desa / Village Profile Book

Tabel 2.3.5
Table

**Keberadaan Perumahan Mewah, Apartemen, Komplek Perumahan /
Rumah Susun, Pemukiman menurut Desa di Kecamatan Tirtajaya,
2018**
*Existence of Real Estate, Apartments, Housing/Flats, Settlement
by Village in Tirtajaya Subdistrict, 2018*

Jenis Permukiman/ <i>Types of Settlements</i>	Keberadaan/ <i>Existence</i>		Jika Ya (kol.2 terisi ceklist)/ <i>If Yes (Fill Col.2 with checklist)</i>		Jml Satuan (unit)/ <i>Total Units</i>	Luas Areal (m2)/ <i>Area</i>	Keterangan
	Ya/ <i>Yes</i>	Tidak/ <i>No</i>	Jumlah Prasarana/ <i>Total Infrastructure</i>				
[1]	[2]	[3]	[4]	[5]	[6]	[7]	
Perumahan Mewah/ <i>Real Estate</i>		√					
Apartemen/ <i>Apartment</i>		√					
Komplek Perumahan/ <i>Housing</i>		√					
Rumah Susun Sederhana/ <i>Flats</i>		√					
Pemukiman/ <i>Perkampungan/ Settlement</i>	√						

Sumber/Source: Buku Profil Desa / *Village Profile Book*

Tabel
Table 2.3.6

**Keberadaan Prasarana Kebersihan dan Penanggulangan
Kebakaran menurut Desa di Kecamatan Tirtajaya, 2018**
*Existence of Cleanup and Fire Management Infrastructure by
Village in Tirtajaya Subdistrict, 2018*

<i>Desa/ Village</i>	<i>Tempat Pembuangan Sampah Akhir/ Final Waste Disposal Site</i>	<i>Tempat Pembuangan Sampah Sementara/ Temporary Trash Disposal</i>	<i>Pengelolaan Sampah Rumah Tangga/ Household Waste Management</i>	<i>Hidrant</i>	<i>Lainnya/ Others</i>
[1]	[2]	[3]	[4]	[5]	[6]
001 Medankarya	-	-	-	-	-
002 Pisangsambo	-	-	-	-	-
003 Sabajaya	4	5	-	-	-
004 Gempolkarya	-	-	-	-	-
005 Srijaya	-	-	-	-	-
006 Kutamakmur	-	11	-	-	-
007 Bolang	-	-	-	-	-
008 Srikamulyan	-	25	-	-	-
009 Sumurlaban	-	8	-	-	-
010 Tambaksumur	-	20	-	-	-
011 Tambaksari	-	-	-	-	-
Tirtajaya	4	69	0	0	0

Sumber/Source: Buku Profil Desa / Village Profile Book

Tabel 2.3.7 Kejadian Bencana Menurut Jenis dan Desa di Kecamatan Tirtajaya, 2018
Table Disaster Events by Type and Village in Tirtajaya Subdistrict, 2018

Jenis Bencana/ <i>Type of Disaster</i>	Kejadian/ <i>Incident</i>		Kerugian/ <i>Loss</i>		Keterangan/ <i>Note</i>
	Ya/ <i>Yes</i>	Tidak/ <i>No</i>	Korban Jiwa/ <i>Fatalities</i>	Nilai Materil/ <i>Material Value</i>	
[1]	[2]	[3]	[4]	[5]	[6]
Tanah Longsor/ <i>Landslide</i>		v			
Banjir/ <i>Flood</i>		v			
Banjir Bandang/ <i>Flash Floods</i>		v			
Gempa Bumi/ Gunung Meletus		v			
Tsunami		v			
Abrasi Pantai		v			
Kebakaran Rumah/ Pemukiman		v			
Pembakaran Hutan/ Ladang/ Sawah		v			

Sumber/Source: Buku Profil Desa / *Village Profile Book*

Tabel 2.3.8 Jumlah Rumah menurut Kondisi dan Desa di Kecamatan Tirtajaya, 2018
Table *Number of Houses by Condition and Village in Tirtajaya Subdistrict, 2018*

Desa/ Village	Layak Huni/ Livable				Jumlah/ Total
	Permanen/ Permanent	Semi Permanen/ Semi Permanent	Tidak Permanen/ Not permanent	Tidak Layak Huni / Not Livable	
[1]	[2]	[3]	[4]	[5]	[6]
001 Medankarya	0
002 Pisangsambo	0
003 Sabajaya	0
004 Gempolkarya	0
005 Srijaya	726	366	156	370	1.618
006 Kutamakmur	40	102	120	60	322
007 Bolang	528	349	328	145	1.350
008 Srikamulyan	617	854	288	142	1.901
009 Sumurlaban	81	205	718	300	1.304
010 Tambaksumur	300	400	400	663	1.763
011 Tambaksari	1.400	730	320	329	2.779
Tirtajaya	3.692*	3.006*	2.330*	2.009*	1.1037*

Sumber/Source: Buku Profil Desa / Village Profile Book

Tabel 2.3.9
Table

Kejadian Pencemaran Lingkungan menurut Jenis dan Desa di Kecamatan Tirtajaya, 2018
Events of Environmental Pollution by Type and Village in Tirtajaya Subdistrict, 2018

Desa/ Village	Keberadaan/ Existence		Jika Ya, jenisnya/ If Yes, what type?			
	Ya/ Yes	Tidak/ No	Air/ Water	Tanah/ Soil	Udara/ Air	Suara/ Sound
[1]	[2]	[3]	[4]	[5]	[6]	[7]
001 Medankarya	-	1	-	-	-	-
002 Pisangsambo	-	1	-	-	-	-
003 Sabajaya	-	1	-	-	-	-
004 Gempolkarya	-	1	-	-	-	-
005 Srijaya	-	1	-	-	-	-
006 Kutamakmur	-	1	-	-	-	-
007 Bolang	-	1	-	-	-	-
008 Srikamulyan	-	1	-	-	-	-
009 Sumurlaban	-	1	-	-	-	-
010 Tambaksumur	-	1	-	-	-	-
011 Tambaksari	-	1	-	-	-	-
Tirtajaya	0	11	0	0	0	0

Sumber/Source: Buku Profil Desa / Village Profile Book

Tabel 2.3.10
Table

Modal Sosial Lingkungan menurut Jenis dan Desa di Kecamatan Tirtajaya, 2018
Environmental Social Capital by Type and Village in Tirtajaya Subdistrict, 2018

Desa/ Village	Kegotongroyongan*/ Cooperation*	Kesetiakawanan*/ Solidarity*	Toleransi*/ Tolerance*	Lainnya (tuliskan)/ Others (Write down)
[1]	[2]	[3]	[4]	[5]
001 Medankarya	<i>baik/good</i>	<i>baik/good</i>	<i>baik/good</i>	
002 Pisangsambo	<i>baik/good</i>	<i>baik/good</i>	<i>baik/good</i>	
003 Sabajaya	<i>baik/good</i>	<i>baik/good</i>	<i>baik/good</i>	
004 Gempolkarya	<i>baik/good</i>	<i>baik/good</i>	<i>baik/good</i>	
005 Srijaya	<i>baik/good</i>	<i>baik/good</i>	<i>baik/good</i>	
006 Kutamakmur	<i>baik/good</i>	<i>baik/good</i>	<i>baik/good</i>	
007 Bolang	<i>baik/good</i>	<i>baik/good</i>	<i>baik/good</i>	
008 Srikamulyan	<i>baik/good</i>	<i>baik/good</i>	<i>baik/good</i>	
009 Sumurlaban	<i>baik/good</i>	<i>baik/good</i>	<i>baik/good</i>	
010 Tambaksumur	<i>baik/good</i>	<i>baik/good</i>	<i>baik/good</i>	
011 Tambaksari	<i>baik/good</i>	<i>baik/good</i>	<i>baik/good</i>	
Tirtajaya	<i>baik/good</i>	<i>baik/good</i>	<i>baik/good</i>	0

Sumber/Source: Buku Profil Desa / Village Profile Book

Keterangan/Note:

B=baik/good/Good

C=Cukup/Enough

K=Kurang/Deficient

Tabel
Table

2.3.11

Kejadian Tindak Kejahatan dan Kerugiannya menurut Desa di Kecamatan Tirtajaya, 2018
Crime Acts and Their Losses by Village in Tirtajaya Subdistrict, 2018

Jenis Tindak Kejahatan/ <i>Types of Crimes</i>	Kejadian/ <i>Incident</i>		Kerugian/ <i>loss</i>		Kete- rangan/ <i>Note</i>
	Ya/ <i>Yes</i>	Tidak/ <i>No</i>	Korban <i>Jiwa/fatalities</i>	Nilai Materil/ <i>Material value</i>	
[1]	[2]	[3]	[4]	[5]	[6]
Pencurian/ <i>Theft</i>		v			
Perampokan/ <i>Robbery</i>		v			
Penjarahan/ <i>Looting</i>		v			
Penganiayaan/ <i>Persecution</i>		v			
Perkosaan/ <i>Rape</i>		v			
Pembunuhan/ <i>Murder</i>		v			
Penyalahgunaan Narkoba/ <i>Drug Abuse</i>		v			
Pelacuran/ <i>Prostitution</i>		v			
Perdagangan Manusia/ <i>Human Trafficking</i>		v			
Lainnya/ <i>Others</i>		v			
Tirtajaya	0	0	0	0	0

Sumber/Source: Buku Profil Desa / *Village Profile Book*

Tabel
Table 2.3.12

Keberadaan Fasilitas Hiburan dan Olahraga menurut Desa di Kecamatan Tirtajaya, 2018
Existence of Entertainment and Sports Facilities by Village in Tirtajaya Subdistrict, 2018

Jenis Fasilitas/ <i>Facility Type</i>	Keberadaan/ <i>Existence</i>		Jika Ya,/ <i>If Yes,</i>		Kete- rangan/ <i>Note</i>
	Ya/ <i>Yes</i>	Tidak/ <i>No</i>	Kapasitas/ <i>Capacity</i>	Pemakaian/ <i>Usage</i>	
[1]	[2]	[3]	[4]	[5]	[6]
Bioskop/ <i>Cinema</i>		v			
Gedung Pertunjukan/ <i>Performance Hall</i>		v			
Pub/Diskotik/Tempat Karaoke/ <i>Pub / Discotheque / Karaoke Place</i>		v			
Lapangan Sepak Bola/ <i>Football field</i>	v		
Lapangan Bola Voli/ <i>Volleyball Court</i>	v		
Lapangan Bulutangkis/ <i>Badminton court</i>	v		
Lapangan Tennis/ <i>Tennis Court</i>	v		
Kolam Renang/ <i>Swimming Pool</i>		v			
Lapangan Basket/ <i>Basketball Court</i>	v		
Tenis Meja/ <i>Table Tennis</i>	v		
Lainnya/ <i>Others</i>		v			

Sumber/Source: Buku Profil Desa / *Village Profile Book*

Tabel
Table 2.3.13

Banyaknya Jama'ah Haji menurut Jenis Kelamin dan Desa di Kecamatan Tirtajaya, 2018
Number of Hajj Pilgrims by Gender and Village in Tirtajaya Subdistrict, 2018

Desa/ Village	Laki-Laki/ Male	Perempuan/ Female	Jumlah/ Total
[1]	[2]	[3]	[4]
001 Medankarya	8	9	17
002 Pisangsambo	9	8	17
003 Sabajaya	4	4	8
004 Gempolkarya	-	-	-
005 Srijaya	3	3	6
006 Kutamakmur	2	1	3
007 Bolang	3	2	5
008 Srikamulyan	7	9	16
009 Sumurlaban	-	2	2
010 Tambaksumur	1	2	3
011 Tambaksari	2	2	4
Tirtajaya	39	42	81

Sumber/Source: Buku Profil Desa / Village Profile Book

Tabel
Table 2.3.14

Jumlah Panti Sosial menurut Jenis dan Desa di Kecamatan Tirtajaya, 2018
Number of Social Institutions by Type and Village in Tirtajaya Subdistrict, 2018

Desa/ Village	Panti Asuhan/ Orphanage	Panti Wreda/ Wreda orphanage	Panti Anak Cacat/ Disabled Children's Home	Panti Rehabilitasi/ Rehabilitation Orphanage	Lainnya/ Others	Jumlah/ Total
[1]	[2]	[3]	[4]	[5]	[6]	[6]
001 Medankarya	-	-	-	-	-	-
002 Pisangsambo	-	-	-	-	-	-
003 Sabajaya	-	-	-	-	-	-
004 Gempolkarya	-	-	-	-	-	-
005 Srijaya	-	-	-	-	-	-
006 Kutamakmur	-	-	-	-	-	-
007 Bolang	-	-	-	-	-	-
008 Srikamulyan	-	-	-	-	-	-
009 Sumurlaban	-	-	-	-	-	-
010 Tambaksumur	-	-	-	-	-	-
011 Tambaksari	-	-	-	-	-	-
Tirtajaya	-	-	-	-	-	-

Sumber/Source: Buku Profil Desa / Village Profile Book

Tabel
Table 2.3.15

Jumlah Majelis ta'lim, Kelompok Kebaktian, LSM, Partai Politik, Organisasi Masyarakat, dan Asosiasi menurut desa di Kecamatan Tirtajaya, 2018
Number of Majlis ta'lim, Assembly Groups, NGOs, Political Parties, Society Organizations, and Associations by village in Tirtajaya Subdistrict, 2018

Desa/ Village	Majelis Ta'lim	Kelompok Kebaktian/ Assembly Group	LSM/ NGO	Partai Politik/ Political Parties	Ormas/ Mass Organization	Asosiasi Pekerja/ Workers' Association	Asosiasi Profes/ Professional Association	Lain nya
[1]	[2]	[3]	[4]	[5]	[6]	[7]	[8]	[9]
001 Medankarya	8	-	-	-	-	-	-	-
002 Pisangsambo	15	-	-	-	-	-	-	15
003 Sabajaya	5	-	1	8	1	-	1	-
004 Gempolkarya	9	-	-	-	-	-	-	-
005 Srijaya	6	-	-	-	-	-	-	-
006 Kutamakmur	10	-	-	-	-	-	-	-
007 Bolang	10	-	-	1	-	-	-	-
008 Srikamulyan	12	-	-	-	-	-	-	-
009 Sumurlaban	8	-	-	-	-	-	-	-
010 Tambaksumur	2	-	-	-	-	-	-	-
011 Tambaksari	7	-	-	2	-	-	-	-
Tirtajaya	92	0	1	11	1	0	1	15

Sumber/Source: Buku Profil Desa / Village Profile Book

BAB 3

Pertanian, Kehutanan, Peternakan, dan Perikanan

*Agriculture, Forestry, Livestock, and
Fishery*



ULASAN

DESCRIPTION

Pertanian tanaman pangan memiliki kontribusi yang sangat besar bagi perekonomian masyarakat di kecamatan Tirtajaya.

Luas lahan sawah di kecamatan Tirtajaya seluas 5.658 Ha. Sistem pengairan yang digunakan di kecamatan Tirtajaya adalah irigasi.

Luas tanam di Kecamatan Tirtajaya 11.146 Ha sedangkan luas panen 10.956 Ha dengan total produksi 10.956 ton pada tahun 2018, ini artinya 9,7 Ton/Ha.

Di sektor peternakan jumlah populasi hewan ternak 1.126 ekor, yang terdiri atas 850 ekor domba, 258 ekor kambing dan 8 ekor sapi.

Populasi unggas di kecamatan Tirtajaya ada 598.609 ekor, yang terdiri atas 584.350 ayam pedaging, 6.789 ayam buras, 5.461 itik, 1.834 itik manila dan 175 merpati.

Food crop agriculture has a very large contribution to the community in Tirtajaya District.

The area of paddy fields in Tirtajaya subdistrict is 5,658 Ha. The irrigation system used in Tirtajaya subdistrict is irrigation.

The planting area in Tirtajaya Subdistrict is 11,146 Ha while the harvesting area is 10,956 Ha with a total production of 10.956 tons in 2018, this means 9.7 tons / ha.

In the livestock sector the number of animals is 1,126, consisting of 850 sheep, 258 sheep and 8 cattle.

The population of poultry in Tirtajaya sub-district is 598,609, consisting of 584,350 chickens, 6,789 free-range chickens, 5,461 ducks, 1,834 manila ducks and 175 pigeons.

3 Pertanian, Kehutanan, Peternakan, dan Perikanan/*Agriculture, Forestry, Livestock, and Fishery*

3.1 Hortikultura/*Horticulture*

Tabel 3.1.1 Luas Panen Tanaman Sayuran dan Buah Semusim menurut Bulan dan Jenis Tanaman (ha) di Kecamatan Tirtajaya, 2017-2018
Table 3.1.1 Harvested Area of Seasonal Vegetables and Fruits by Month and Kind of Plant (ha) in Tirtajaya Subdistrict, 2017-2018

Bulan <i>Month</i>	Bawang Merah <i>Shallot</i>		Cabai Chili		Kentang Potato		Kubis Cabbage	
	2017	2018	2017	2018	2017	2018	2017	2018
(1)	(2)	(3)	(4)	(5)	(6)	(7)	(8)	(9)
Januari/January	-	-	-	-	-	-	-	-
Februari/ February	-	-	-	-	-	-	-	-
Maret/ March	-	-	-	-	-	-	-	-
April	-	-	-	-	-	-	-	-
Mei/ May	-	-	-	-	-	-	-	-
Juni/ June	-	-	-	-	-	-	-	-
Juli/ July	-	-	-	-	-	-	-	-
Agustus/ August	-	-	-	-	-	-	-	-
September	-	-	-	-	-	-	-	-
Oktober/ October	-	-	-	-	-	-	-	-
November	-	-	-	-	-	-	-	-
Desember/ December	-	-	-	-	-	-	-	-
Tirtajaya	-	-	-	-	-	-	-	-

Sumber/ *Source*: BPS, Statistik Pertanian Hortikultura SPH-SBS/*BPS-Statistics Indonesia, Agricultural Statistics for Horticulture SPH-SBS*

Lanjutan tabel/ *Continued Table 3.1.1*

Bulan Month	Petsai Chinese Cabbage		Tomat Tomato		Wortel Carrot	
	2017 (10)	2018 (11)	2017 (12)	2018 (13)	2017 (14)	2018 (15)
Januari/January	-	-	-	-	-	-
Februari/ February	-	-	-	-	-	-
Maret/ March	-	-	-	-	-	-
April	-	-	-	-	-	-
Mei/ May	-	-	-	-	-	-
Juni/ June	-	-	-	-	-	-
Juli/ July	-	-	-	-	-	-
Agustus/ August	-	-	-	-	-	-
September	-	-	-	-	-	-
Oktober/ October	-	-	-	-	-	-
November	-	-	-	-	-	-
Desember/ December	-	-	-	-	-	-
Tirtajaya	-	-	-	-	-	-

Sumber/ Source: BPS, Statistik Pertanian Hortikultura SPH-SBS/BPS-Statistics Indonesia, *Agricultural Statistics for Horticulture SPH-SBS*

Tabel
Table 3.1.2

Produksi Tanaman Sayuran dan Buah Semusim menurut Bulan dan Jenis Tanaman (Kuintal) di Kecamatan Tirtajaya, 2017-2018

Production of Seasonal Vegetables and Fruits by Month and Kind of Plant (Quintal) in Tirtajaya Subdistrict, 2017-2018

Bulan Month	Bawang Merah Shallot		Cabai Chili		Kentang Potato		Kubis Cabbage	
	2017	2018	2017	2018	2017	2018	2017	2018
	(1)	(2)	(3)	(4)	(5)	(6)	(7)	(8)
Januari/January	-	-	-	-	-	-	-	-
Februari/ February	-	-	-	-	-	-	-	-
Maret/ March	-	-	-	-	-	-	-	-
April	-	-	-	-	-	-	-	-
Mei/ May	-	-	-	-	-	-	-	-
Juni/ June	-	-	-	-	-	-	-	-
Juli/ July	-	-	-	-	-	-	-	-
Agustus/ August	-	-	-	-	-	-	-	-
September	-	-	-	-	-	-	-	-
Oktober/ October	-	-	-	-	-	-	-	-
November	-	-	-	-	-	-	-	-
Desember/ December	-	-	-	-	-	-	-	-
Tirtajaya	-	-	-	-	-	-	-	-

Sumber/ Source: BPS, Statistik Pertanian Hortikultura SPH-SBS/BPS-Statistics Indonesia, Agricultural Statistics for Horticulture SPH-SBS

Lanjutan tabel/ *Continued Table 3.1.2*

Bulan Month	Petsai Chinese Cabbage		Tomat Tomato		Wortel Carrot	
	2017	2018	2017	2018	2017	2018
(1)	(10)	(11)	(12)	(13)	(14)	(15)
Januari/January	-	-	-	-	-	-
Februari/ February	-	-	-	-	-	-
Maret/ March	-	-	-	-	-	-
April	-	-	-	-	-	-
Mei/ May	-	-	-	-	-	-
Juni/ June	-	-	-	-	-	-
Juli/ July	-	-	-	-	-	-
Agustus/ August	-	-	-	-	-	-
September	-	-	-	-	-	-
Oktober/ October	-	-	-	-	-	-
November	-	-	-	-	-	-
Desember/ December	-	-	-	-	-	-
Tirtajaya	-	-	-	-	-	-

Sumber/ Source: BPS, Statistik Pertanian Hortikultura SPH-SBS/BPS-Statistics Indonesia,
Agricultural Statistics for Horticulture SPH-SBS

Tabel
Table 3.1.3

Luas Panen Tanaman Sayuran dan Buah-Buahan Semusim Menurut Jenis Tanaman (ha) di Kecamatan Tirtajaya, 2015-2018
Harvested Area of Vegetables by Village and Kind of Plant (ton) in Tirtajaya Subdistrict, 2017 and 2018

Jenis Tanaman		2015	2016	2017	2018
Kind of Plants		(1)	(2)	(3)	(4)
1	Bawang Daun/ Spring Onion	...	-	-	-
2	Bawang Merah/ Shallot	...	-	-	-
3	Bawang Putih/ Garlic	...	-	-	-
4	Bayam/ Spinach	...	-	-	-
5	Blewah/ Cantaloupe	...	-	-	-
6	Buncis/ Bean	...	-	-	-
7	Cabai Besar/ Chilli	...	-	-	-
8	Cabai Rawit/ Cayenne Pepper	...	-	-	-
9	Jamur*)/ Mushroom	...	3.200	2.800	2.560
10	Kacang Merah/ Red Beans	...	-	-	-
11	Kacang Panjang/ Long Beans	...	-	-	-
12	Kangkung/ Kale	...	-	-	-
13	Kembang Kol/ Cauliflower	...	-	-	-
14	Kentang/ Potato	...	-	-	-
15	Ketimun/ Cucumber	...	-	-	-
16	Kubis/ Cabbage	...	-	-	-
17	Labu Siam/ Chayote	...	-	-	-
18	Lobak/ Radish	...	-	-	-
19	Melon	...	-	-	-
20	Paprika	...	-	-	-
21	Petsai/Sawi/ Pets/Mustard	...	-	-	-
22	Semangka/ Watermelon	...	-	-	-
23	Stroberi/ Strawberry	...	-	-	-
24	Terung/ Eggplant	...	-	-	-
25	Tomat/ Tomato	...	-	-	-
26	Wortel/ Carrot	...	-	-	-
Tirtajaya		...	3.200	2.800	2.560

Catatan/Note: luasan dalam satuan M² dan produksi dalam satuan Kg/ Harvested area in M² and production in kilograms

Sumber/ Source: BPS, Statistik Pertanian Hortikultura SPH-SBS/BPS-Statistics Indonesia, Agricultural Statistics for Horticulture SPH-SBS

Tabel 3.1.4 **Produksi Tanaman Sayuran dan Buah-Buahan Semusim Menurut Jenis Tanaman (Kuintal) di Kecamatan Tirtajaya, 2015-2018**
Table 3.1.4 **Harvested Area of Seasonal Vegetables and Fruits by Kind of Plant (Quintal) in Tirtajaya Subdistrict, 2015-2018**

	Jenis Tanaman <i>Kind of Plants</i>	2015	2016	2017	2018
	(1)	(2)	(3)	(4)	(5)
1	Bawang Daun/ <i>Spring Onion</i>	...	-	-	-
2	Bawang Merah/ <i>Shallot</i>	...	-	-	-
3	Bawang Putih/ <i>Garlic</i>	...	-	-	-
4	Bayam/ <i>Spinach</i>	...	-	-	-
5	Blewah/ <i>Cantaloupe</i>	...	-	-	-
6	Buncis/ <i>Bean</i>	...	-	-	-
7	Cabai Besar/ <i>Chilli</i>	...	-	-	-
8	Cabai Rawit/ <i>Cayenne Pepper</i>	...	-	-	-
9	Jamur*)/ <i>Mushroom</i>	...	9.250	23.000	12.800
10	Kacang Merah/ <i>Red Beans</i>	...	-	-	-
11	Kacang Panjang/ <i>Long Beans</i>	...	-	-	-
12	Kangkung/ <i>Kale</i>	...	-	-	-
13	Kembang Kol/ <i>Cauliflower</i>	...	-	-	-
14	Kentang/ <i>Potato</i>	...	-	-	-
15	Ketimun/ <i>Cucumber</i>	...	-	-	-
16	Kubis/ <i>Cabbage</i>	...	-	-	-
17	Labu Siam/ <i>Chayote</i>	...	-	-	-
18	Lobak/ <i>Radish</i>	...	-	-	-
19	Melon	...	-	-	-
20	Paprika	...	-	-	-
21	Petsai/Sawi/ <i>Pets/Mustard</i>	...	-	-	-
22	Semangka/ <i>Watermelon</i>	...	-	-	-
23	Stroberi/ <i>Strawberry</i>	...	-	-	-
24	Terung/ <i>Eggplant</i>	...	-	-	-
25	Tomat/ <i>Tomato</i>	...	-	-	-
26	Wortel/ <i>Carrot</i>	...	-	-	-
Tirtajaya		...	9.250	23.000	12.800

Catatan/Note: luasan dalam satuan M² dan produksi dalam satuan Kg/ *Harvested area in M² and production in kilograms*

Sumber/ Source: BPS, Statistik Pertanian Hortikultura SPH-SBS/BPS-Statistics Indonesia, *Agricultural Statistics for Horticulture SPH-SBS*

Tabel
Table 3.1.5

Produksi Tanaman Sayuran dan Buah Tahunan menurut Triwulan dan Jenis Tanaman (Kuintal) di Kecamatan Tirtajaya, 2017-2018
Production of Annual Vegetables and Fruits by Quarterly and Kind of Plant (Quintal) in Tirtajaya Subdistrict, 2017-2018

Bulan Month	Mangga Mango		Durian Durian		Jeruk Orange	
	2017	2018	2017	2018	2017	2018
(1)	(2)	(3)	(4)	(5)	(6)	(7)
Triwulan 1	375	375	-	-	-	-
Triwulan 2	375	375	-	-	-	-
Triwulan 3	-	-	-	-	-	-
Triwulan 4	375	337	-	-	-	-
Tirtajaya	1.125	1.087	-	-	-	-

Sumber/ Source: BPS, Statistik Pertanian Hortikultura SPH-SBS/BPS-Statistics Indonesia, Agricultural Statistics for Horticulture SPH-SBS

Lanjutan tabel/ *Continued Table 3.1.5*

Bulan Month	Pisang Banana		Pepaya Papaya		Salak Salacca	
	2017	2018	2017	2018	2017	2018
(1)	(10)	(11)	(12)	(13)	(14)	(15)
Triwulan 1	-	-	10	10	-	-
Triwulan 2	84	-	15	8	-	-
Triwulan 3	-	-	10	10	-	-
Triwulan 4	6	10	10	25	-	-
Tirtajaya	90	10	45	53	-	-

Sumber/ Source:

BPS, Statistik Pertanian Hortikultura SPH-SBS/BPS-Statistics Indonesia, *Agricultural Statistics for Horticulture SPH-SBS*

Tabel
Table 3.1.6

Produksi Tanaman Sayuran dan Buah-Buahan Tahunan Menurut Jenis Tanaman (Kuintal) di Kecamatan Tirtajaya, 2015-2018
Production of Annual Vegetables and Fruits by Kind of Plant (Quintal) in Tirtajaya Subdistrict, 2015-2018

	Jenis Tanaman <i>Kind of Plants</i>	2015	2016	2017	2018
	(1)	(2)	(3)	(4)	(5)
1	Alpukat/ <i>Avocado</i>	...	-	-	-
2	Anggur/ <i>Grape</i>	...	-	-	-
3	Apel/ <i>Apple</i>	...	-	-	-
4	Belimbing/ <i>Star fruit</i>	...	-	-	-
5	Duku/Langsar/Kokosan	...	-	-	-
6	Durian	...	-	-	-
7	Jambu Air/ <i>Water Apple</i>	...	4.400	2.875	2.850
8	Jambu Biji/ <i>Guava</i>	...	49	34	48
9	Jengkol	...	-	-	-
10	Jeruk Besar/ <i>Big Orange</i>	...	-	-	-
11	Jeruk Siam/Kepron/ <i>Tangerines</i>	...	-	-	-
12	Mangga/ <i>Mango</i>	...	1.650	1.125	1.087
13	Manggis/ <i>Mangosteen</i>	...	-	-	-
14	Markisa/Konyal/ <i>Passion Fruit</i>	...	-	-	-
15	Melinjo	...	-	-	-
16	Nangka/Cempedak/ <i>Jackfruit</i>	...	68	29	75
17	Nenas/ <i>Pineapple</i>	...	-	-	-
18	Pepaya/ <i>Papaya</i>	...	75	45	53
19	Petai	...	-	-	-
20	Pisang/ <i>Banana</i>	...	16	90	25
21	Rambutan	...	-	-	-
22	Salak/ <i>Salacca</i>	...	-	-	-
23	Sawo	...	-	-	-
24	Sirsak/ <i>Soursop</i>	...	-	-	-
25	Sukun/ <i>Breadfruit</i>	...	-	-	-
	Tirtajaya	...	6.258	4.198	4.138

Sumber/ Source: BPS, Statistik Pertanian Hortikultura SPH-SBS/BPS-Statistics Indonesia, Agricultural Statistics for Horticulture SPH-SBS

Tabel
Table 3.1.7

**Luas Panen Tanaman Biofarmaka menurut Bulan dan Jenis Tanaman (m²)
di Kecamatan Tirtajaya, 2017 dan 2018**
*Harvested Area of Medicinal Plants by Month and Kind of Plant (m²) in
Tirtajaya Subdistrict, 2017 and 2018*

Bulan Month	Jahe/ <i>Ginger</i>		Laos/Lengkuas/ <i>Galangal</i>	
	2017	2018	2017	2018
(1)	(2)	(3)	(4)	(5)
Januari/January	-	-	-	-
Februari/ February	-	-	-	-
Maret/ March	-	-	-	-
April	-	-	-	-
Mei/ May	-	-	-	-
Juni/ June	-	-	-	-
Juli/ July	-	-	-	-
Agustus/ August	-	-	-	-
September	-	-	-	-
Oktober/ October	-	-	-	-
November	-	-	-	-
Desember/ December	-	-	-	-
Tirtajaya	-	-	-	-

Sumber/ Source: BPS, Statistik Pertanian Hortikultura SPH-SBS/BPS-Statistics Indonesia, Agricultural Statistics for Horticulture SPH-SBS

Lanjutan tabel/ *Continued Table 3.1.7*

Bulan Month	Kencur/ <i>East Indian Galangal</i>		Kunyit/ <i>Turmeric</i>	
	2017	2018	2017	2018
(1)	(6)	(7)	(8)	(9)
Januari/January	-	-	-	-
Februari/ February	-	-	-	-
Maret/ March	-	-	-	-
April	-	-	-	-
Mei/ May	-	-	-	-
Juni/ June	-	-	-	-
Juli/ July	-	-	-	-
Agustus/ August	-	-	-	-
September	-	-	-	-
Oktober/ October	-	-	-	-
November	-	-	-	-
Desember/ December	-	-	-	-
Tirtajaya	-	-	-	-

Sumber/ *Source*: BPS, Statistik Pertanian Hortikultura SPH-SBS/BPS-Statistics Indonesia, Agricultural Statistics for Horticulture SPH-SBS

Tabel 3.1.8 **Produksi Tanaman Biofarmaka menurut Bulan dan Jenis Tanaman (kg) di Kecamatan Tirtajaya, 2017 dan 2018**
Table **3.1.8** **Production of Medicinal Plants by Month and Kind of Plant (kg) in Tirtajaya Subdistrict, 2017 and 2018**

Bulan Month	Jahe/Ginger		Laos/Lengkuas/Galangal	
	2017	2018	2017	2018
(1)	(2)	(3)	(4)	(5)
Januari/January	-	-	-	-
Februari/ February	-	-	-	-
Maret/ March	-	-	-	-
April	-	-	-	-
Mei/ May	-	-	-	-
Juni/ June	-	-	-	-
Juli/ July	-	-	-	-
Agustus/ August	-	-	-	-
September	-	-	-	-
Oktober/ October	-	-	-	-
November	-	-	-	-
Desember/ December	-	-	-	-
Tirtajaya	-	-	-	-

Sumber/ Source: BPS, Statistik Pertanian Hortikultura SPH-SBS/BPS-Statistics Indonesia, Agricultural Statistics for Horticulture SPH-SBS

Lanjutan tabel/ *Continued Table 3.1.8*

Bulan Month	Kencur/ <i>East Indian Galangal</i>		Kunyit/ <i>Turmeric</i>	
	2017	2018	2017	2018
(1)	(6)	(7)	(8)	(9)
Januari/January	-	-	-	-
Februari/ February	-	-	-	-
Maret/ March	-	-	-	-
April	-	-	-	-
Mei/ May	-	-	-	-
Juni/ June	-	-	-	-
Juli/ July	-	-	-	-
Agustus/ August	-	-	-	-
September	-	-	-	-
Oktober/ October	-	-	-	-
November	-	-	-	-
Desember/ December	-	-	-	-
Tirtajaya	-	-	-	-

Sumber/ *Source*: BPS, Statistik Pertanian Hortikultura SPH-SBS/BPS-Statistics Indonesia, *Agricultural Statistics for Horticulture SPH-SBS*

Tabel
Table 3.1.9

Luas Panen Tanaman Biofarmaka Menurut Jenis Tanaman (m²) di Kecamatan Tirtajaya, 2015-2018
Harvested Area of Medicinal Plants by Kind of Plant (m²) in Tirtajaya Subdistrict, 2015-2018

	Jenis Tanaman <i>Kind of Plants</i>	2015	2016	2017	2018
	(1)	(2)	(3)	(4)	(5)
1	Dlingo/Dringo	-	-	-	-
2	Jahe/ <i>Ginger</i>	-	-	-	-
3	Kapulaga/ <i>Cardamom</i>	-	-	-	-
4	Keji Beling/ <i>Vile Shard</i>	-	-	-	-
5	Kencur/ <i>East Indian Galangal</i>	-	-	-	-
6	Kunyit/ <i>Turmeric</i>	-	-	-	-
7	Laos/Lengkuas/ <i>Galangal</i>	-	-	-	-
8	Lempuyang	-	-	-	-
9	Lidah Buaya/ <i>Aroe Vera</i>	-	-	-	-
10	Mahkota Dewa*)/ <i>Crown of God</i>	-	-	-	-
11	Mengkudu/Pace*)/ <i>Noni/Pace</i>	-	-	-	-
12	Sambiloto	-	-	-	-
13	Temuireng	-	-	-	-
14	Temukunci	-	-	-	-
15	Temulawak/ <i>Curcuma</i>	-	-	-	-
Tirtajaya		-	-	-	-

Catatan/Note: Luas Panen diisi dalam satuan Pohon/*Harvested Area is filled in Trees*

Sumber/ Source: BPS, Statistik Pertanian Hortikultura SPH-SBS/*BPS-Statistics Indonesia, Agricultural Statistics for Horticulture SPH-SBS*

Tabel
Table 3.1.10

Produksi Tanaman Biofarmaka Menurut Jenis Tanaman (kg) di Kecamatan Tirtajaya, 2015-2018
Production of Medicinal Plants by Kind of Plant (kg) in Tirtajaya Subdistrict, 2015-2018

Jenis Tanaman		2015	2016	2017	2018
Kind of Plants		(1)	(2)	(3)	(4)
1	Dlingo/Dringo	-	-	-	-
2	Jahe/ <i>Ginger</i>	-	-	-	-
3	Kapulaga/ <i>Cardamom</i>	-	-	-	-
4	Keji Beling/ <i>Vile Shard</i>	-	-	-	-
5	Kencur/ <i>East Indian Galangal</i>	-	-	-	-
6	Kunyit/ <i>Turmeric</i>	-	-	-	-
7	Laos/Lengkuas/ <i>Galangal</i>	-	-	-	-
8	Lempuyang	-	-	-	-
9	Lidah Buaya/ <i>Aroe Vera</i>	-	-	-	-
10	Mahkota Dewa/ <i>Crown of God</i>	-	-	-	-
11	Mengkudu/Pace/ <i>Noni/Pace</i>	-	-	-	-
12	Sambiloto	-	-	-	-
13	Temuireng	-	-	-	-
14	Temukunci	-	-	-	-
15	Temulawak/ <i>Curcuma</i>	-	-	-	-
Tirtajaya		-	-	-	-

Sumber/ Source: BPS, Statistik Pertanian Hortikultura SPH-SBS/BPS-Statistics Indonesia, *Agricultural Statistics for Horticulture SPH-SBS*

Tabel 3.1.11 Luas Panen Tanaman Hias menurut Bulan dan Jenis Tanaman (m²) di Kecamatan Tirtajaya, 2017 dan 2018
Table 3.1.11 *Harvested Area of Ornamental Plants by Month and Kind of Plant (m²) in Tirtajaya Subdistrict, 2017 and 2018*

Bulan Month	Anggrek/ <i>Orchid</i>		Krisan/ <i>Chrysantemum</i>	
	2017	2018	2017	2018
(1)	(2)	(3)	(4)	(5)
Januari/January	-	-	-	-
Februari/February	-	-	-	-
Maret/March	-	-	-	-
April	-	-	-	-
Mei/May	-	-	-	-
Juni/June	-	-	-	-
Juli/July	-	-	-	-
Agustus/August	-	-	-	-
September	-	-	-	-
Oktober/October	-	-	-	-
November	-	-	-	-
Desember/December	-	-	-	-
Tirtajaya	-	-	-	-

Sumber/ Source: BPS, Statistik Pertanian Hortikultura SPH-SBS/BPS-Statistics Indonesia, *Agricultural Statistics for Horticulture SPH-SBS*

Lanjutan tabel/ *Continued Table 3.1.11*

Bulan <i>Month</i>	Mawar/Rose		Sedap Malam/ <i>Tuberose</i>	
	2017	2018	2017	2018
(1)	(6)	(7)	(8)	(9)
Januari/January	-	-	-	-
Februari/ February	-	-	-	-
Maret/ March	-	-	-	-
April	-	-	-	-
Mei/ May	-	-	-	-
Juni/ June	-	-	-	-
Juli/ July	-	-	-	-
Agustus/ August	-	-	-	-
September	-	-	-	-
Oktober/ October	-	-	-	-
November	-	-	-	-
Desember/ December	-	-	-	-
Tirtajaya	-	-	-	-

Sumber/ *Source*: BPS, Statistik Pertanian Hortikultura SPH-SBS/BPS-Statistics Indonesia, *Agricultural Statistics for Horticulture SPH-SBS*

Tabel
Table 3.1.12

Produksi Tanaman Hias menurut Bulan dan Jenis Tanaman (tangkai) di Kecamatan Tirtajaya, 2017 dan 2018
Production of Ornamental Plants by Month and Kind of Plant (stalks) in Tirtajaya Subdistrict, 2017 and 2018

Bulan Month	Anggrek/ <i>Orchid</i>		Krisan/ <i>Chrysantemum</i>	
	2017	2018	2017	2018
(1)	(2)	(3)	(4)	(5)
Januari/January	-	-	-	-
Februari/ February	-	-	-	-
Maret/ March	-	-	-	-
April	-	-	-	-
Mei/ May	-	-	-	-
Juni/ June	-	-	-	-
Juli/ July	-	-	-	-
Agustus/ August	-	-	-	-
September	-	-	-	-
Oktober/ October	-	-	-	-
November	-	-	-	-
Desember/ December	-	-	-	-
Tirtajaya	-	-	-	-

Sumber/ Source: BPS, Statistik Pertanian Hortikultura SPH-SBS/BPS-Statistics Indonesia, Agricultural Statistics for Horticulture SPH-SBS

Lanjutan tabel/ *Continued Table 3.1.12*

Bulan Month	Mawar/Rose		Sedap Malam/ <i>Tuberose</i>	
	2017	2018	2017	2018
(1)	(6)	(7)	(8)	(9)
Januari/January	-	-	-	-
Februari/ February	-	-	-	-
Maret/ March	-	-	-	-
April	-	-	-	-
Mei/ May	-	-	-	-
Juni/ June	-	-	-	-
Juli/ July	-	-	-	-
Agustus/ August	-	-	-	-
September	-	-	-	-
Oktober/ October	-	-	-	-
November	-	-	-	-
Desember/ December	-	-	-	-
Tirtajaya	-	-	-	-

Sumber/ *Source*: BPS, Statistik Pertanian Hortikultura SPH-SBS/BPS-Statistics Indonesia, Agricultural Statistics for Horticulture SPH-SBS

Tabel
Table 3.1.13

Luas Panen Tanaman Hias Menurut Jenis Tanaman (m²) di Kecamatan Tirtajaya, 2015-2018
Harvested Area of Ornamental Plants by Kind of Plant (m²) in Tirtajaya Subdistrict, 2015-2018

Jenis Tanaman Kind of Plants		2015	2016	2017	2018
(1)	(2)	(3)	(4)	(5)	(6)
1	Adenium (Kamboja Jepang)/ Cambodian Japanese	...	-	-	-
2	Aglaonema	...	-	-	-
3	Anggrek/ Orchid	...	-	-	-
4	Anthurium Bunga/ Anthurium Flowers	...	-	-	-
5	Anthurium Daun/ Anthurium Leaves	...	-	-	-
6	Anyelir/ Carnation	...	-	-	-
7	Caladium	...	-	-	-
8	Cordyline	...	-	-	-
9	Diffenbachia	...	-	-	-
10	Dracaena	...	-	-	-
11	Euphorbia	...	-	-	-
12	Gerbera (Herbras)	...	-	-	-
13	Gladiol/ Gladiolus	...	-	-	-
14	Heliconia (Pisang-Pisangan)	...	-	-	-
15	Ixora (Soka)	...	-	-	-
16	Krisan/ Chrysanthemum	...	-	-	-
17	Mawar/ Rose	...	-	-	-
18	Melati/ Jasmine	...	-	-	-
19	Monstera	...	-	-	-
20	Pakis/ Fern	...	-	-	-
21	Palem*)/ Palm	...	-	-	-
22	Phylodendron	...	-	-	-
23	Sansevieria (Pedang- Pedangan)	...	-	-	-
24	Sedap Malam/ Tuberose	...	-	-	-
Tirtajaya		...	-	-	-

Catatan/Note: Luas Panen diisi dalam satuan Pohon/Harvested Area is filled in Trees

Sumber/ Source: BPS, Statistik Pertanian Hortikultura SPH-SBS/BPS-Statistics Indonesia, Agricultural Statistics for Horticulture SPH-SBS

Tabel 3.1.14 **Produksi Tanaman Hias Menurut Jenis Tanaman (tangkai) di Kecamatan Tirtajaya, 2015-2018**
Table **Production of Ornamental Plants by Kind of Plant (stalks) in Tirtajaya Subdistrict, 2015-2018**

Jenis Tanaman		2015	2016	2017	2018
Kind of Plants		(1)	(2)	(3)	(4)
1	Adenium (Kamboja Jepang)/ <i>Cambodian Japanese</i>	...	-	-	-
2	Aglaonema	...	-	-	-
3	Anggrek/ <i>Orchid</i>	...	-	-	-
4	Anthurium Bunga/ <i>Anthurium Flowers</i>	...	-	-	-
5	Anthurium Daun/ <i>Anthurium Leaves</i>	...	-	-	-
6	Anyelir/ <i>Carnation</i>	...	-	-	-
7	Caladium	...	-	-	-
8	Cordyline	...	-	-	-
9	Diffenbachia	...	-	-	-
10	Dracaena	...	-	-	-
11	Euphorbia	...	-	-	-
12	Gerbera (Herbras)	...	-	-	-
13	Gladiol/ <i>Gladiolus</i>	...	-	-	-
14	Heliconia (Pisang-Pisangan)	...	-	-	-
15	Ixora (Soka)	...	-	-	-
16	Krisan/ <i>Chrysanthemum</i>	...	-	-	-
17	Mawar/ <i>Rose</i>	...	-	-	-
18	Melati/ <i>Jasmine</i>	...	-	-	-
19	Monstera	...	-	-	-
20	Pakis/ <i>Fern</i>	...	-	-	-
21	Palem/ <i>Palm</i>	...	-	-	-
22	Phylodendron	...	-	-	-
23	Sansevieria (Pedang-Pedangan)	...	-	-	-
24	Sedap Malam/ <i>Tuberose</i>	...	-	-	-
Tirtajaya		...	-	-	-

Sumber/ Source: BPS, Statistik Pertanian Hortikultura SPH-SBS/BPS-Statistics Indonesia, *Agricultural Statistics for Horticulture SPH-SBS*

3.2 Perkebunan/*Estate Crops*

Tabel 3.2.1 **Luas Area Tanaman Perkebunan Menurut Kelurahan/Desa dan Jenis Tanaman (ha), 2017 dan 2018**
Table 3.2.1 **Planted area of Estate Crops by Kelurahan/Village and Type of Crops (ha), 2017 and 2018**

Kelurahan/Desa <i>Kelurahan/Village</i>	Kelapa Sawit <i>Oil Palm</i>		Kelapa <i>Coconut</i>		Karet <i>Rubber</i>		Kopi <i>Coffee</i>	
	2017	2018	2017	2018	2017	2018	2017	2018
(1)	(2)	(3)	(4)	(5)	(6)	(7)	(8)	(9)
001 Medankarya	-	-	-	-	-	-	-	-
002 Pisangsambo	-	-	-	-	-	-	-	-
003 Sabajaya	-	-	-	-	-	-	-	-
004 Gempolkarya	-	-	-	-	-	-	-	-
005 Srijaya	-	-	-	-	-	-	-	-
006 Kutamakmur	-	-	-	-	-	-	-	-
007 Bolang	-	-	-	-	-	-	-	-
008 Srikamulyan	-	-	-	-	-	-	-	-
009 Sumurlaban	-	-	-	-	-	-	-	-
010 Tambaksumur	-	-	-	-	-	-	-	-
011 Tambaksari	-	-	-	-	-	-	-	-
Tirtajaya	-	-	-	-	-	-	-	-

Sumber/ *Source:*

Direktorat Jenderal Perkebunan/*Directorate General of Estates*

Lanjutan tabel/ *Continued Table 3.2.1*

Kelurahan/Desa <i>Kelurahan/Village</i>	Kakao <i>Cocoa</i>		Tebu <i>Sugar Cane</i>		Teh <i>Tea</i>		Tembakau <i>Tobacco</i>	
	2017	2018	2017	2018	2017	2018	2017	2018
(1)	(10)	(11)	(12)	(13)	(14)	(15)	(16)	(17)
001 Medankarya	-	-	-	-	-	-	-	-
002 Pisangsambo	-	-	-	-	-	-	-	-
003 Sabajaya	-	-	-	-	-	-	-	-
004 Gempolkarya	-	-	-	-	-	-	-	-
005 Srijaya	-	-	-	-	-	-	-	-
006 Kutamakmur	-	-	-	-	-	-	-	-
007 Bolang	-	-	-	-	-	-	-	-
008 Srikamulyan	-	-	-	-	-	-	-	-
009 Sumurlaban	-	-	-	-	-	-	-	-
010 Tambaksumur	-	-	-	-	-	-	-	-
011 Tambaksari	-	-	-	-	-	-	-	-
Tirtajaya	-	-	-	-	-	-	-	-

Sumber/ *Source*: Direktorat Jenderal Perkebunan/*Directorate General of Estates*

Tabel 3.2.2 **Produksi Perkebunan Menurut Kelurahan/Desa dan jenis Tanaman (ton), 2017 dan 2018**
Table **3.2.2** **Production of Estate by Kelurahan/Village and Type of Crops (ton), 2017 and 2018**

Kelurahan/Desa Kelurahan/Village	Kelapa Sawit Oil Palm		Kelapa Coconut		Karet Rubber		Kopi Coffee	
	2017	2018	2017	2018	2017	2018	2017	2018
(1)	(2)	(3)	(4)	(5)	(6)	(7)	(8)	(9)
001 Medankarya	-	-	-	-	-	-	-	-
002 Pisangsambo	-	-	-	-	-	-	-	-
003 Sabajaya	-	-	-	-	-	-	-	-
004 Gempolkarya	-	-	-	-	-	-	-	-
005 Srijaya	-	-	-	-	-	-	-	-
006 Kutamakmur	-	-	-	-	-	-	-	-
007 Bolang	-	-	-	-	-	-	-	-
008 Srikamulyan	-	-	-	-	-	-	-	-
009 Sumurlaban	-	-	-	-	-	-	-	-
010 Tambaksumur	-	-	-	-	-	-	-	-
011 Tambaksari	-	-	-	-	-	-	-	-
Tirtajaya	-	-	-	-	-	-	-	-

Sumber/ Source: Direktorat Jenderal Perkebunan/Directorate General of Estates

Lanjutan tabel/ *Continued Table 3.2.2*

Kelurahan/Desa <i>Kelurahan/Village</i>	Kakao <i>Cocoa</i>		Tebu <i>Sugar Cane</i>		Teh <i>Tea</i>		Tembakau <i>Tobacco</i>	
	2017	2018	2017	2018	2017	2018	2017	2018
(1)	(10)	(11)	(12)	(13)	(14)	(15)	(16)	(17)
001 Medankarya	-	-	-	-	-	-	-	-
002 Pisangsambo	-	-	-	-	-	-	-	-
003 Sabajaya	-	-	-	-	-	-	-	-
004 Gempolkarya	-	-	-	-	-	-	-	-
005 Srijaya	-	-	-	-	-	-	-	-
006 Kutamakmur	-	-	-	-	-	-	-	-
007 Bolang	-	-	-	-	-	-	-	-
008 Srikamulyan	-	-	-	-	-	-	-	-
009 Sumurlaban	-	-	-	-	-	-	-	-
010 Tambaksumur	-	-	-	-	-	-	-	-
011 Tambaksari	-	-	-	-	-	-	-	-
Tirtajaya	-	-	-	-	-	-	-	-

Sumber/ *Source*: Direktorat Jenderal Perkebunan/*Directorate General of Estates*

3.3 Pertanian/ Agriculture

Tabel 3.3.1 Luas Panen Tanaman Padi dan Palawija di Kecamatan Tirtajaya, 2018
Table 3.3.1 *Harvest Area for Paddy and Palawija Plants in Tirtajaya Subdistrict, 2018*

Komoditas/ Commodity	Luas Panen (Ha)/ Harvested Area (Hectars)
[1]	[2]
Padi Sawah/ <i>Wetland</i>	10.956
Padi Ladang/ <i>Dryland</i>	-
Total/ <i>Total</i>	10.956
Jagung/ <i>Corn</i>	0
Ketela Pohon/ <i>Cassava</i>	0
Ketela Rambat/ <i>Crepeers</i>	0
Kacang Tanah/ <i>Peanut</i>	0
Kacang Kedelai/ <i>Soybeans</i>	0
Kacang Hijau/ <i>Mungbeans</i>	0
Sorgum/ <i>Sorghum</i>	0
Kentang/ <i>Potatoes</i>	0

Sumber/Source: Pertanian Kecamatan Tirtajaya / Agriculture of Tirtajaya District

Tabel 3.3.2 Total Produksi Tanaman Padi dan Palawija di Kecamatan Tirtajaya, 2018
Table 3.3.2 *Total production for Paddy and Palawija Plants in Tirtajaya Subdistrict, 2018*

Komoditas/ <i>Commodity</i>	Total Produksi (ton) / <i>Total Production (Ton)</i>
[1]	[2]
Padi Sawah/ <i>Wetland</i>	107.042,94
Padi Ladang/ <i>Dryland</i>	-
Total/ <i>Total</i>	107.042,94
Jagung/ <i>Corn</i>	0
Ketela Pohon/ <i>Cassava</i>	0
Ketela Rambat/ <i>Crepeers</i>	0
Kacang Tanah/ <i>Peanut</i>	0
Kacang Kedelai/ <i>Soybeans</i>	0
Kacang Hijau/ <i>Mungbeans</i>	0
Sorgum/ <i>Sorghum</i>	0
Kentang/ <i>Potatoes</i>	0

Sumber/Source: Pertanian Kecamatan Tirtajaya / *Agriculture of Tirtajaya District*

Tabel 3.3.3
Table

Total Produksi Per Hektar Tanaman Padi dan Palawija di Kecamatan Tirtajaya, 2018
Total Production per Hectars for Paddy and Palawija Plants in Tirtajaya Subdistrict, 2018

Komoditas/ Commodity	Produksi per Hektar/ Production per Hectars
[1]	[2]
Padi Sawah/ <i>Wetland</i>	9,7
Padi Ladang/ <i>Dryland</i>	-
Total/ <i>Total</i>	9,7
Jagung/ <i>Corn</i>	0
Ketela Pohon/ <i>Cassava</i>	0
Ketela Rambat/ <i>Crepeers</i>	0
Kacang Tanah/ <i>Peanut</i>	0
Kacang Kedelai/ <i>Soybeans</i>	0
Kacang Hijau/ <i>Mungbeans</i>	0
Sorgum/ <i>Sorghum</i>	0
Kentang/ <i>Potatoes</i>	0

Sumber/Source: Pertanian Kecamatan Tirtajaya / Agriculture of Tirtajaya District

3.4 Peternakan/ Livestock

Tabel 3.4.1 Populasi Hewan Ternak menurut Jenis dan Desa di Kecamatan Tirtajaya, 2018
Table *Population of Livestock by Type and Village in Tirtajaya Subdistrict, 2018*

Desa/ Village	Ternak Besar (ekor)/ Large Livestock (tail)					Ternak Kecil (ekor)/ Small Livestock (tail)			
	Sapi Potong/ Beef cattle	Sapi Perah/ Dairy cows	Kerbau/ Buffalo	Kuda/ Horse	Domba/ Sheep	Kambing/ Goat	Babi/ Pig	Kelinci/ Rabbit	Lainnya/ Others
[1]	[2]	[3]	[4]	[5]	[6]	[7]	[8]	[9]	[10]
001 Medankarya	-	-	-	-	56	32	-	-	-
002 Pisangsambo	-	-	-	-	102	26	-	4	-
003 Sabajaya	-	-	-	3	99	27	-	1	-
004 Gempolkarya	-	-	-	-	72	12	-	-	-
005 Srijaya	8	-	-	-	96	17	-	-	-
006 Kutamakmur	-	-	-	-	59	12	-	-	-
007 Bolang	-	-	-	-	100	20	-	2	-
008 Srikamulyan	-	-	-	-	69	22	-	-	-
009 Sumurlaban	-	-	-	-	77	27	-	-	-
010 Tambaksumur	-	-	-	-	42	35	-	-	-
011 Tambaksari	-	-	-	-	78	28	-	-	-
Tirtajaya	8	-	-	3	850	258	-	7	-

Sumber/Source: Pertanian Kecamatan Tirtajaya / Agriculture of Tirtajaya District

Tabel 3.4.2
Table

Populasi Ternak Unggas menurut Jenis dan Desa di Kecamatan Tirtajaya, 2018
Poultry Populations by Type and Village in Tirtajaya Subdistrict, 2018

Desa/ Village		Jenis Unggas (ekor)/ Poultry Type (tail)							
		Itik/ Duck	Itik Manila/ Muscovy Duck	Ayam Buras/ Kampong Chicken	Ayam Pedaging/ Broiler	Ayam Petelur/ Laying hens	Merpati/ dove	Puyuh/ Quail	Lainnya/ Others
[1]	[2]	[3]	[4]	[5]	[6]	[7]	[8]	[9]	
001	Medankarya	372	143	1.022	-	-	10	-	-
002	Pisangsambo	805	240	826	-	-	20	-	-
003	Sabajaya	1.483	388	1.078	270.000	-	31	-	-
004	Gempolkarya	286	122	393	134.350	-	15	-	-
005	Srijaya	444	129	306	-	-	12	-	-
006	Kutamakmur	332	138	459	180.000	-	13	-	-
007	Bolang	316	123	485	-	-	20	-	-
008	Srikamulyan	520	168	694	-	-	25	-	-
009	Sumurlaban	255	118	383	-	-	15	-	-
010	Tambaksumur	321	121	500	-	-	10	-	-
011	Tambaksari	326	144	644	-	-	4	-	-
Tirtajaya		5.461	1.834	6.789	584.350	-	175	-	-

Sumber/Source: Pertanian Kecamatan Tirtajaya / Agriculture of Tirtajaya District

BAB 4

PARIWISATA, HOTEL, PERDAGANGAN, TRANSPORTASI dan KOMUNIKASI

*Tourism, Hotel, Trade, Transportation
And Communication*



ULASAN

DESCRIPTION

<p>Panjang jalan di kecamatan Tirtajaya adalah 98,5 km yang terdiri atas-jalan aspal sepanjang 84 km, diperkeras sepanjang 14,5 km.</p>	<p><i>The length of the road in the Tirtajaya subdistrict is 98.5 km, consisting of 84 km of asphalt roads, hardened along the 14.5 km.</i></p>
<p>Angkutan transportasi di Kecamatan Tirtajaya didominasi oleh kendaraan roda dua, untuk angkutan umum terdapat angkot dengan rute Desa Rengasdengklok Utara Kec. Rengasdengklok yang melewati 2 desa yaitu Desa Pisangsambo dan Desa Sabajaya.</p>	<p><i>Transportation in Tirtajaya Subdistrict is dominated by two-wheeled vehicles, for public transportation there are public transportation with the route Rengasdengklok Utara Village Kec. Rengasdengklok that passes through 2 villages namely Pisangsambo Village and Sabajaya Village.</i></p>
<p>Di kecamatan Tirtajaya, 7 dari 11 desa dapat menikmati sinyal seluler dengan baik / sinyal kuat.</p>	<p><i>In Tirtajaya subdistrict, 7 out of 11 villages can enjoy cellular signal with good / strong signal.</i></p>
<p>Sarana pasar modern di kecamatan Tirtajaya terlihat dengan adanya minimarket yang berjumlah 6 unit.</p>	<p><i>The facilities of a modern market in Tirtajaya subdistrict can be seen from the 6 units of minimarket.</i></p>
<p>Di Kecamatan Tirtajaya tidak terdapat sarana akomodasi hal ini dikarenakan potensi wisata yang kurang di Kecamatan Tirtajaya sehingga tidak ada investor yang mau membangun hotel di Kecamatan Tiratajaya.</p>	<p><i>There is no accommodation facility in Tirtajaya Subdistrict because of the lack of tourism potential in Tirtajaya Subdistrict so that no investor wants to build a hotel in Tiratajaya subdistrict.</i></p>

4 Pariwisata/Tourism

Tabel 4.1.1 Jumlah Rumah Makan/Restoran Menurut Kelurahan/Desa, 2015-2018
Table Number of Restaurants by kelurahan/Village, 2015-2018

Kelurahan/Desa		2015	2016	2017	2018
Kelurahan/Village					
(1)	(2)	(3)	(4)	(5)	
001	Medankarya	-	-	-	-
002	Pisangsambo	-	-	-	-
003	Sabajaya	-	-	-	-
004	Gempolkarya	-	-	-	-
005	Srijaya	-	-	-	-
006	Kutamakmur	-	-	-	-
007	Bolang	-	-	-	-
008	Srikamulyan	-	-	-	-
009	Sumurlaban	-	-	-	-
010	Tambaksumur	-	-	-	-
011	Tambaksari	-	-	-	-
Tirtajaya		-	-	-	-

Catatan/Note:

Sumber/ Source: BPS, Pendataan Potensi Desa (Podes)/BPS-Statistics Indonesia, Village Potential Data Collection

4.2 Perdagangan/ Trade

Tabel 4.2.1 Jumlah Sarana Usaha Perdagangan menurut Jenis dan Desa di Kecamatan Tirtajaya, 2018
Table 4.2.1 Number of Trade Business Facilities by Type and Village in Tirtajaya Subdistrict, 2018

Desa/ Village	Supermarket/ Hipermarket/ Supermarkets / Hypermarkets	Swalayan/ Minimarket	Toko/ Warung Aneka Barang/ Kelontong/ Shops / Food Stalls / Grocery	Pasar Tradisional/ Traditional Markets	Pasar Pekanan/ Weekly Market	Lainnya/ Others
[1]	[2]	[3]	[4]	[5]	[6]	[7]
001 Medankarya	-	-	15	-	-	-
002 Pisangsambo	-	1	44	-	-	1
003 Sabajaya	-	2	49	-	-	7
004 Gempolkarya	-	-	10	-	-	-
005 Srijaya	-	-	16	-	-	2
006 Kutamakmur	-	-	12	1	-	8
007 Bolang	-	2	14	-	-	2
008 Srikamulyan	-	-	52	-	-	8
009 Sumurlaban	-	-	43	-	-	-
010 Tambaksumur	-	1	32	1	-	4
011 Tambaksari	-	-	35	1	-	9
Tirtajaya	-	6	322	3	-	41

Catatan/Note: -

Sumber/ Source: BPS, Pendataan Potensi Desa (Podes)/BPS-Statistics Indonesia, Village Potential Data Collection

Tabel 4.2.2 Jumlah Sarana Perdagangan Komoditi Strategis menurut Jenis dan Desa di Kecamatan Tirtajaya, 2018
Table *Number of Strategic Commodity Trading Facilities by Type and Village in Tirtajaya Subdistrict, 2018*

Desa/ Village	SPBU/ Gas station	SPPBE/ LPG Bulk Filling and Transport Station	Pangkalan Minyak Tanah/ Kerosene Base	Pasar Induk/ Central Market	Pelelangan Ikan/ Fish auction	Pasar Ternak/ Livestock Market	Lainnya/ Others
[1]	[2]	[3]	[4]	[5]	[6]	[7]	[8]
001 Medankarya	-	-	-	-	-	-	-
002 Pisangsambo	-	-	-	-	-	-	-
003 Sabajaya	-	-	-	-	-	-	-
004 Gempolkarya	-	-	-	-	-	-	-
005 Srijaya	-	-	-	-	-	-	-
006 Kutamakmur	-	-	-	-	-	-	-
007 Bolang	-	-	-	-	-	-	-
008 Srikamulyan	-	-	-	-	-	-	-
009 Sumurlaban	-	-	-	-	-	-	-
010 Tambaksumur	-	-	-	-	-	-	-
011 Tambaksari	-	-	-	-	1	-	-
Tirtajaya	-	-	-	-	1	-	-

Sumber/Source: Buku Profil Desa / Village Profile Book

Tabel
Table 4.2.3

Jumlah Unit Jasa Pendidikan Luar Sekolah menurut Desa di Kecamatan Tirtajaya, 2018
Number of Non-School Education Services Units by Village in Tirtajaya Subdistrict, 2018

Desa/ Village	Pontren/ Islamic Boarding School	Kursus Ketrampilan/ Vocational Course	Kursus Bahasa/ Language course	Bimbingan Belajar/ Tutoring	Lainnya/ Others	Jumlah/ Total
[1]	[2]	[3]	[4]	[5]	[6]	[7]
001 Medankarya	1	-	-	-	-	1
002 Pisangsambo	5	-	-	-	-	5
003 Sabajaya	2	-	-	5	-	7
004 Gempolkarya	-	-	-	-	-	-
005 Srijaya	2	-	-	-	-	2
006 Kutamakmur	-	-	-	-	-	-
007 Bolang	2	-	-	-	-	2
008 Srikamulyan	3	-	-	-	-	3
009 Sumurlaban	1	-	-	-	-	1
010 Tambaksumur	1	-	-	-	-	1
011 Tambaksari	1	-	-	-	-	1
Tirtajaya	18	-	-	5	-	23

Sumber/Source: Buku Profil Desa / Village Profile Book

Tabel 4.2.4 Jumlah Unit Usaha Jasa Reparasi menurut Jenis dan Desa di Kecamatan Tirtajaya, 2018
Table *Number of Repair Service Business Units by Type and Village in Tirtajaya Subdistrict, 2018*

Desa/ Village	Alat Elektronik/ Electronic devices	Perkakas Rumah Tangga/ Home Appliances	Mesin & Peralatan Teknik/ Mechanical Engineering & Equipment	Perhiasan/ Jewelry	Lainnya/ Others	Jumlah/ Total
[1]	[2]	[3]	[4]	[5]	[6]	[7]
001 Medankarya	-	-	-	-	-	-
002 Pisangsambo	4	1	3	-	-	8
003 Sabajaya	1	-	-	1	-	2
004 Gempolkarya	3	-	-	-	-	3
005 Srijaya	2	-	-	-	-	2
006 Kutamakmur	2	-	1	-	-	3
007 Bolang	5	-	5	1	-	11
008 Srikamulyan	5	3	1	-	-	9
009 Sumurlaban	2	3	-	1	-	6
010 Tambaksumur	4	-	-	-	-	4
011 Tambaksari	3	10	-	-	-	13
Tirtajaya	31	17	10	3	-	61

Sumber/Source: Buku Profil Desa / Village Profile Book

Tabel
Table

4.2.5

Jumlah Unit Usaha Jasa Persewaan menurut Desa di Kecamatan Tirtajaya, 2018
Number of Rental Services Business Units by Village in Tirtajaya Subdistrict, 2018

Desa/ Village	Rumah Kost/ Kontrakan/ Boarding House/ Rent	Aula/ Gedung/ Hall/ Building	Kendaraan/ Vehicle	Mesin & Peralatan Teknik/ Mechanical Engineering & Equipment	Komputer & Alat Elektronik / Computer s & Electronic Devices	Alat Perlengkapan Pesta/ Party Supplies	Sarana Hiburan/ Entertainment facility	Lainnya/ Others	Jumlah/ Total
[1]	[2]	[3]	[4]	[5]	[6]	[7]	[8]	[9]	[10]
001 Medankarya	-	-	-	-	-	3	-	-	3
002 Pisangsambo	3	-	7	-	-	3	4	-	17
003 Sabajaya	-	-	-	-	-	-	-	-	-
004 Gempolkarya	-	-	-	-	-	3	3	-	6
005 Srijaya	-	-	-	-	-	2	-	-	2
006 Kutamakmur	1	-	-	-	-	3	-	-	4
007 Bolang	-	-	9	-	2	2	4	-	17
008 Srikamulyan	-	-	6	-	-	3	1	-	10
009 Sumurlaban	1	-	-	-	-	2	-	-	3
010 Tambaksumur	1	-	1	-	-	2	-	-	4
011 Tambaksari	2	-	4	-	-	1	-	-	7
Tirtajaya	8	-	27	-	2	24	12	-	73

Sumber/Source: Buku Profil Desa / Village Profile Book

**Tabel
Table**

4.2.6

**Jumlah Unit Usaha Jasa Lainnya menurut Desa di Kecamatan Tirtajaya, 2018
Number of Other Service Business Units by Village in Tirtajaya Subdistrict, 2018**

Desa/ Village	Penyalur Tenaga Kerja/ Employment Agency	Advokat/ Pengacara/ LBH/ Advocate / Lawyer / Legal Aid Institute	Notaris/ PPAT/ Notary / Land Deed Making Officer	Salon Kecantikan/ Beauty salon	Pangkas Rambut/ Haircut	Perpustakaan/ Library	Taman Bacaan/ Reading Park	Lainnya / Others	Juml ah/ Total
[1]	[2]	[3]	[4]	[5]	[6]	[7]	[8]	[9]	[10]
001 Medankarya	-	-	-	-	-	-	-	-	-
002 Pisangsambo	1	-	-	1	2	1	-	-	5
003 Sabajaya	-	-	-	-	-	-	-	-	-
004 Gempolkarya	-	-	-	-	2	-	-	-	2
005 Srijaya	-	-	-	1	-	-	-	-	1
006 Kutamakmur	3	-	-	-	3	-	-	-	6
007 Bolang	8	-	-	1	2	1	-	-	12
008 Srikamulyan	1	-	-	-	3	1	-	-	5
009 Sumurlaban	-	-	-	-	-	-	-	-	-
010 Tambaksumur	-	-	-	-	1	1	-	-	2
011 Tambaksari	-	-	-	1	3	1	-	-	5
Tirtajaya	13	-	-	4	16	5	-	-	38

Sumber/Source: Buku Profil Desa / Village Profile Book

Tabel
Table 4.2.7

Jumlah Unit Usaha Fotokopi dan Bengkel menurut Desa di Kecamatan Tirtajaya, 2018
Number of Photocopying and Workshop Business Units by Village in Tirtajaya Subdistrict, 2018

Desa/ Village	Foto kopi/ Photocopy	Bengkel Sepeda/ Becak/ Bicycle / Pedicab Repair Shop	Bengkel Motor/ Bike Repair shop	Bengkel Mobil/ Car repair shop	Bengkel Perahu/ Kapal/ Boat Repair Shop
[1]	[2]	[3]	[4]	[5]	[6]
001 Medankarya	-	-	6	-	-
002 Pisangsambo	2	1	11	2	-
003 Sabajaya	2	-	10	1	-
004 Gempolkarya	-	-	5	-	-
005 Srijaya	-	-	8	-	-
006 Kutamakmur	2	1	7	-	-
007 Bolang	2	3	9	3	-
008 Srikamulyan	-	-	6	-	1
009 Sumurlaban	-	2	6	-	-
010 Tambaksumur	1	-	8	-	-
011 Tambaksari	1	2	6	-	-
Tirtajaya	10	9	82	6	1

Sumber/Source: Buku Profil Desa / Village Profile Book

4.3 Transportasi dan Komunikasi/ *Transportation and Communication*

Tabel 4.3.1 **Panjang Jalan menurut Status Pengelola dan Desa di Kecamatan Tirtajaya, 2018**
Table 4.3.1 **Road Length according to Status of Managers and Villages in Tirtajaya Subdistrict, 2018**

	Desa/ <i>Village</i>	Jalan Negara (Km)/ <i>National Road</i> (kilometers)	Jalan Propinsi (Km)/ <i>Provincial Road</i> (kilometers)	Jalan Kabupaten (Km)/ <i>Regency Road</i> (kilometers)	Jalan Desa (Km)/ <i>Village Road</i> (kilometers)
	[1]	[2]	[3]	[4]	[5]
001	Medankarya	-	-	-	9
002	Pisangsambo	-	2	4	8
003	Sabajaya	-	-	3	7
004	Gempolkarya	-	-	-	5
005	Srijaya	-	-	3	6
006	Kutamakmur	-	-	2	5
007	Bolang	-	-	2	6
008	Srikamulyan	-	-	3	4
009	Sumurlaban	-	-	3,5	5
010	Tambaksumur	-	-	4	6
011	Tambaksari	-	-	4	7
	Tirtajaya	-	2	28,5	68

Sumber/Source: Buku Profil Desa / *Village Profile Book*

Tabel 4.3.2 **Panjang Jalan menurut Jenis Permukaan dan Desa di Kecamatan Tirtajaya, 2018**
Table *Road Length by Surface Type and Village in Tirtajaya Subdistrict, 2018*

	Desa/ Village	Aspal/Beton/ Asphalt / Concrete	Diperkeras/ Hardened	Tanah/ Soil	Jumlah/ Total
	[1]	[2]	[3]	[4]	[5]
001	Medankarya	7	2	-	9
002	Pisangsambo	13	1	-	14
003	Sabajaya	8	2	-	10
004	Gempolkarya	3	2	-	5
005	Srijaya	8	1	-	9
006	Kutamakmur	6	1	-	7
007	Bolang	7	1	-	8
008	Srikamulyan	6	1	-	7
009	Sumurlaban	8	1	-	9
010	Tambaksumur	8	2	-	10
011	Tambaksari	10	1	-	11
	Tirtajaya	84	15	-	99

Sumber/Source: Buku Profil Desa / Village Profile Book

Tabel 4.3.3 **Persentase Kondisi Jalan menurut Desa di Kecamatan Tirtajaya, 2018**
Table *percentage of Road Conditions by Village in Tirtajaya Subdistrict, 2018*

	<i>Desa/ Village</i>	<i>Baik (%) / Good</i>	<i>Rusak ringan (%) / Lightly Damaged</i>	<i>Rusak Berat (%) / Heavy Damaged</i>	<i>Jumlah/ Total</i>
	[1]	[2]	[3]	[4]	[5]
001	Medankarya	85,00	15,00	-	100,00
002	Pisangsambo	80,00	20,00	-	100,00
003	Sabajaya	70,00	20,00	10,00	100,00
004	Gempolkarya	70,00	20,00	10,00	100,00
005	Srijaya	70,00	20,00	10,00	100,00
006	Kutamakmur	85,00	15,00	-	100,00
007	Bolang	80,00	15,00	5,00	100,00
008	Srikamulyan	70,00	20,00	10,00	100,00
009	Sumurlaban	70,00	25,00	5,00	100,00
010	Tambaksumur	70,00	25,00	5,00	100,00
011	Tambaksari	75,00	15,00	10,00	100,00
	Tirtajaya	75,00	19,09	5,91	100,00

Sumber/Source: Buku Profil Desa / Village Profile Book

Tabel
Table 4.3.4

Jumlah Telepon Umum, Wartel, Warnet dan Kantor Pos menurut Desa di Kecamatan Tirtajaya, 2018
Number of Public Telephone, Wartel, Warnet and Post Offices by Village in Tirtajaya Subdistrict, 2018

Desa/ Village	Jumlah Pelanggan Telepon Kabel/ Number of Wired Telephone Customers	Telepon Umum/ Payphone	Wartel/ Kios Telepon/ Telephone Stalls	Warnet/ Internet cafes	Kantor Pos/ Post Office	Jasa Pengiriman/ Kargo lainnya/ Other Freight / Cargo Services
[1]	[2]	[3]	[4]	[5]	[6]	[7]
001 Medankarya	-	-	-	-	-	-
002 Pisangsambo	-	-	-	-	-	-
003 Sabajaya	-	-	-	-	-	-
004 Gempolkarya	-	-	-	-	-	-
005 Srijaya	-	-	-	-	-	-
006 Kutamakmur	-	-	-	-	-	-
007 Bolang	-	-	-	2	-	-
008 Srikamulyan	-	-	-	-	-	-
009 Sumurlaban	-	-	-	-	-	-
010 Tambaksumur	-	-	-	1	-	-
011 Tambaksari	-	-	-	3	-	-
Tirtajaya	-	-	-	6	-	-

Sumber/Source: Buku Profil Desa / Village Profile Book

Tabel 4.3.5 Jumlah Sarana Angkutan yang Beroperasi/Digunakan menurut Jenis dan Desa di Kecamatan Tirtajaya, 2018
Table *Number of Transportation Facilities Operating / Used by Type and Village in Tirtajaya Subdistrict, 2018*

Desa/ Village	Bis/ Bus	Angkutan umum/ Public Transport	Truk/ Pick up/ Truck/ Pick Ups	Mobil Minibus/ Sedan/ Minibus/ Sedan Car	Sepeda Motor/ Motorcycle	Lain nya/ Others
[1]	[2]	[3]	[4]	[5]	[6]	[7]
001 Medankarya	-	-	11	12	11	0
002 Pisangsambo	-	4	13	-	16	-
003 Sabajaya	-	-	-	10	20	-
004 Gempolkarya	-	-	-	-	13	-
005 Srijaya	-	-	-	-	7	-
006 Kutamakmur	-	-	4	-	12	-
007 Bolang	-	-	-	-	11	-
008 Srikamulyan	-	-	2	-	13	-
009 Sumurlaban	-	-	2	-	9	-
010 Tambaksumur	-	-	-	-	13	-
011 Tambaksari	-	-	13	-	12	-
Tirtajaya	0	4	45	22	137	0

Sumber/Source: Buku Profil Desa / Village Profile Book

Tabel
Table 4.3.6

Sarana Transmisi dan Kekuatan Sinyal Telekomunikasi menurut Desa di Kecamatan Tirtajaya, 2018
Transmission Facilities and Signal Strength of Telecommunications by Village in Tirtajaya Subdistrict, 2018

Desa/ Village	Stasiun Pemancar TV/ TV Transmitter Station	Stasiun Pemancar Radio/ Radio Transmission Station	Jumlah BTS/ Number of BTS	Sinyal Kuat/ Strong Signal	Sinyal Lemah/ Weak Signal	Tidak ada Sinyal/ No Signal
[1]	[2]	[3]	[4]	[5]	[6]	[7]
001 Medankarya	-	-	-	1	-	-
002 Pisangsambo	-	-	1	1	-	-
003 Sabajaya	-	-	2	1	-	-
004 Gempolkarya	-	-	-	1	-	-
005 Srijaya	-	-	2	1	-	-
006 Kutamakmur	-	-	1	1	-	-
007 Bolang	-	-	-	1	-	-
008 Srikamulyan	-	-	1	1	-	-
009 Sumurlaban	-	-	-	1	-	-
010 Tambaksumur	-	-	2	1	-	-
011 Tambaksari	-	-	1	1	-	-
Tirtajaya	-	-	10	11	-	-

Sumber/Source: Buku Profil Desa / Village Profile Book

BAB 5

KEPENDUDUKAN dan KETENAGAKERJAAN

Population And Employment



ULASAN

DESCRIPTION

Berdasarkan laporan registrasi penduduk tahun 2018, penduduk Kecamatan Tirtajaya yang tersebar di sebelas wilayah desa tercatat sebanyak 73.801 jiwa. Jumlah penduduk laki-laki sebanyak 36.102 jiwa dan penduduk perempuan sebanyak 37.669 jiwa. Jika dilihat menurut desa, tercatat Desa Pisangsambo memiliki jumlah penduduk terbanyak yaitu 9.393 jiwa sedangkan Desa Sumurlaban memiliki jumlah penduduk paling sedikit yaitu 4.072 jiwa.

Kecamatan Tirtajaya memiliki luas wilayah 92,25 km², dengan jumlah penduduk sebanyak 73.801 jiwa maka tingkat kepadatan penduduknya sebanyak 800,01 Jiwa per km persegi. Dengan tingkat kepadatan tertinggi di Desa Pisangsambo dan terendah di Desa Tambaksumur.

Jumlah rumah tangga di Kecamatan Tirtajaya tahun 2018 sebanyak 27.502, meningkat jika dibandingkan dengan tahun 2017 yaitu sebanyak 27.424.

Laju pertumbuhan sebesar 0,84 %

Based on the 2018 population registration report, the population of Tirtajaya Subdistrict, which is spread across eleven village areas, was recorded at 73,801 people. The total population of men is 36,102 and women population is 37,669. When viewed according to the village, recorded Pisangsambo Village has the largest population of 9,393 people while the Village of Sumurlaban has the least population of 4,072 people.

Tirtajaya subdistrict has an area of 92.25 km², with a population of 73,801 people, the population density level is 800.01 people per square kilometer. With the highest density level in Pisangsambo Village and the lowest in Tambaksumur Village.

The number of households in Tirtajaya subdistrict in 2018 was 27,502, an increase compared to 2017 which was 27,424.

Growth about 0,84%.

5. Kependudukan dan Ketenagakerjaan/ *Population and Employment*

5.1 Kependudukan/ *Population*

Tabel 5.1.1 **Luas Wilayah, Jumlah Rumah Tangga, Jumlah Penduduk, dan Tingkat Kepadatan Penduduk menurut Desa di Kecamatan Tirtajaya, 2018**
Table 5.1.1 **Area, Number of Households, Number of Population, and Population Density by Village in Tirtajaya District, 2018**

	Desa/ <i>Village</i>	Luas Wilayah (Km2)/ <i>Area</i>	Jumlah Rumah Tangga (KK)/ <i>Number of Households</i>	Jumlah Penduduk/ <i>Total Population</i>	Tingkat Kepadatan Penduduk per Km2/ <i>Population Density</i>
	[1]	[2]	[3]	[4]	[5]
001	Medankarya	9,62	2.033	6.291	653,95
002	Pisangsambo	5,69	3.075	9.393	1.650,79
003	Sabajaya	5,44	5.014	8.866	1.629,78
004	Gempolkarya	2,91	1.479	4.727	1.624,40
005	Srijaya	5,70	2.223	6.629	1.162,98
006	Kutamakmur	4,21	1.683	4.645	1.103,33
007	Bolang	4,79	1.595	5.697	1.189,35
008	Srikamulyan	7,29	2.644	7.361	1.009,74
009	Sumurlaban	4,81	1.897	4.072	846,57
010	Tambaksumur	17,04	3.080	7.955	466,84
011	Tambaksari	24,75	2.779	8.165	329,90
	Tirtajaya	92,25	27.502	73.801	800,01

Sumber/ Source: Register Kependudukan Kecamatan Tirtajaya Januari 2019 / Tirtajaya District Population Register January 2019

Tabel 5.1.2 **Jumlah Penduduk menurut Desa dan Jenis Kelamin, serta Sex Ratio di Kecamatan Tirtajaya, 2018**
Table *Number of Population by Village and Gender, and Sex Ratio in Tirtajaya District, 2018*

Desa/ Village		Jenis Kelamin/ Sex		Sex Ratio
		Laki-laki/ Male	Perempuan/ Female	
[1]	[2]	[3]	[4]	
001	Medankarya	3.215	3.076	104,52
002	Pisangsambo	4.583	4.810	95,28
003	Sabajaya	3.975	4.891	81,27
004	Gempolkarya	2.391	2.336	102,35
005	Srijaya	3.127	3.502	89,29
006	Kutamakmur	2.418	2.227	108,58
007	Bolang	2.862	2.835	100,95
008	Srikamulyan	3.739	3.622	103,23
009	Sumurlaban	1.969	2.103	93,63
010	Tambaksumur	3.770	4.185	90,08
011	Tambaksari	4.053	4.112	98,57
Tirtajaya		36.102	37.699	95,76

Sumber/ Source: Register Kependudukan Kecamatan Tirtajaya Januari 2019 / Tirtajaya District Population Register January 2019

Tabel 5.1.3 **Jumlah Penduduk Menurut Kelompok Umur di Kecamatan Tirtajaya, 2018**
Table *Number of Populations by Age Group in Tirtajaya District, 2018*

Kelompok Umur/ Age Group	Jenis Kelamin/ Sex		Jumlah/ Total
	Laki-laki/ Male	Perempuan/ Female	
[1]			[2]
0 - 4	3.211	3.065	6.276
5 - 9	3.023	2.923	5.946
10 - 14	3.282	3.252	6.534
15 - 19	3.255	2.866	6.121
20 - 24	2.937	2.687	5.624
25 - 29	2.746	2.605	5.351
30 - 34	2.641	2.771	5.412
35 - 39	2.798	2.700	5.498
40 - 44	2.617	2.576	5.193
45 - 49	2.343	2.100	4.443
50 - 54	1.925	1.774	3.699
55 - 59	1.290	1.144	2.434
60 - 64	1.145	984	2.129
65 - 69	646	644	1.290
70 - 74	502	604	1.106
75+	387	536	923
Tirtajaya	34.748	33.231	67.979

Sumber/Source: Proyeksi Penduduk Kabupaten Karawang 2010-2020/ Population Projection of Karawang Regency 2010-2020

Tabel
Table 5.1.4

Laju Pertumbuhan Penduduk menurut Desa di Kecamatan Tirtajaya, 2016-2018
Population Growth Rate by Village in Tirtajaya District, 2016-2018

Kelompok Umur/ Age Group	Jumlah Penduduk/ Total Population			Laju Pertumbuhan penduduk (LPP)/ Population Growth Rate
	2016	2017	2018	
[1]	[2]	[3]	[4]	[5]
0 - 4	6.175	6.228	6.276	0,77
5 - 9	5.846	5.898	5.946	0,81
10 - 14	6.417	6.477	6.534	0,88
15 - 19	6.018	6.070	6.121	0,84
20 - 24	5.540	5.582	5.624	0,75
25 - 29	5.270	5.313	5.351	0,72
30 -34	5.331	5.373	5.412	0,73
35 - 39	5.411	5.456	5.498	0,77
40 - 44	5.105	5.151	5.193	0,82
45 - 49	4.360	4.401	4.443	0,95
50 - 54	3.627	3.664	3.699	0,96
55 - 59	2.385	2.410	2.434	1,00
60 - 64	2.083	2.107	2.129	1,04
65 - 69	1.262	1.277	1.290	1,02
70 - 74	1.082	1.094	1.106	1,10
75+	896	910	923	1,43
Tirtajaya	66.808	67.411	67.979	0,84

Sumber/Source: Proyeksi Penduduk Kabupaten Karawang 2010-2020/ Population Projection of Karawang Regency 2010-2020

5.2 Ketenagakerjaan/ *Employment*

Tabel 5.2.1 Keberadaan Kantor PJTKI dan Agen Penyalur Tenaga Kerja menurut Desa di Kecamatan Tirtajaya, 2018
Table 5.2.1 Existence of Indonesian labor service providers Offices and Labor Distribution Agencies by Village in Tirtajaya Subdistrict, 2018

Desa/ Village	Kantor PJTKI/ Indonesian labor service providers Offices	Agen Penyalur TKI ke LN/ Indonesian Manpower Distribution Agency Overseas	Agen Penyalur Tenaga Kerja Lokal/ Local Manpower Distribution Agency
[1]	[2]	[3]	[4]
001 Medankarya	-	-	-
002 Pisangsambo	-	1	-
003 Sabajaya	-	-	-
004 Gempolkarya	-	-	-
005 Srijaya	-	-	-
006 Kutamakmur	-	2	-
007 Bolang	-	-	9
008 Srikamulyan	-	-	-
009 Sumurlaban	-	-	-
010 Tambaksumur	-	-	-
011 Tambaksari	-	-	-
Tirtajaya	-	3	9

Sumber/Source: Buku Profil Desa / Village Profile Book

Tabel 5.2.2 **Jumlah TKI menurut Desa dan Jenis Kelamin di Kecamatan Tirtajaya, 2018**
Table 5.2.2 **Number of Indonesian Migrant Workers by Village and Sex in Tirtajaya Subdistrict, 2018**

Desa/ Village	Laki-laki/ Male	Perempuan/ Female	Jumlah TKI/ Total
[1]	[2]	[3]	[4]
001 Medankarya	-	17	17
002 Pisangsambo	-	4	4
003 Sabajaya	-	2	2
004 Gempolkarya	-	20	20
005 Srijaya	3	196	199
006 Kutamakmur	15	25	40
007 Bolang	5	98	103
008 Srikamulyan	6	113	119
009 Sumurlaban	2	20	22
010 Tambaksumur	3	15	18
011 Tambaksari	4	29	33
Tirtajaya	38	539	577

Sumber/Source: Buku Profil Desa / Village Profile Book

Tabel
Table 5.2.3

Jumlah TKI menurut Kawasan Negara Tujuan dan Desa di Kecamatan Tirtajaya, 2018
Number of Indonesian Migrant Workers by Region of Destination Country and Village in Tirtajaya Subdistrict, 2018

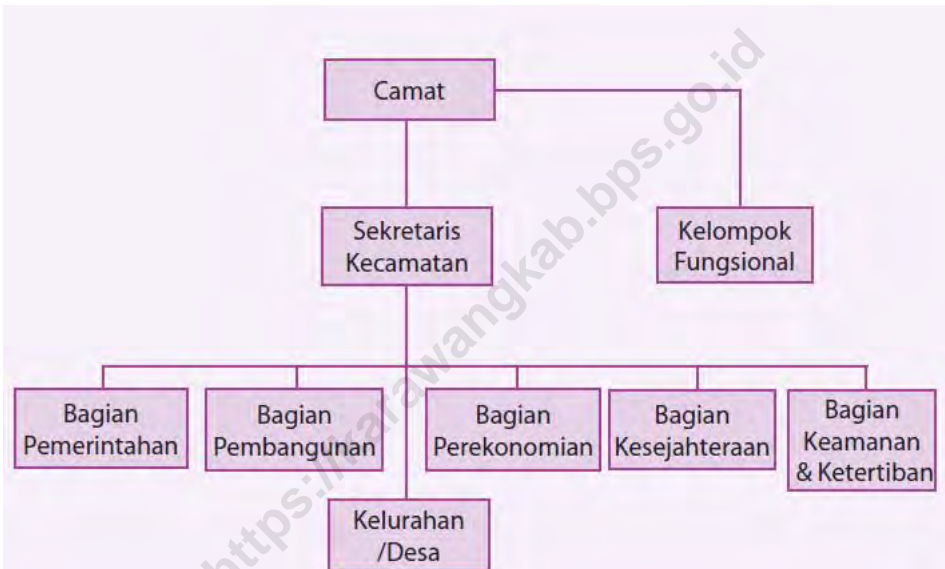
Desa/ Village	Asia	Afrika/ Africa	Amerika/ America	Timur Tengah/ Middle East	Lainnya / Others	Jumlah TKI/ Total
[1]	[2]	[3]	[4]	[5]	[6]	[7]
001 Medankarya	3	-	-	8	6	17
002 Pisangsambo		-	-	4		4
003 Sabajaya	2	-	-	-	-	2
004 Gempolkarya	6	-	-	9	5	20
005 Srijaya		-	-	5	194	199
006 Kutamakmur	5	-	-	17	18	40
007 Bolang	24	-	-	20	59	103
008 Srikamulyan	6	-	-	102	11	119
009 Sumurlaban	3	-	-	15	4	22
010 Tambaksumur	2	-	-	16	-	18
011 Tambaksari	3	-	-	25	5	33
Tirtajaya	54	-	-	221	302	577

Sumber/Source: Buku Profil Desa / Village Profile Book

BAB 6

PEMERINTAHAN

Government



ULASAN

DESCRIPTION

Pemerintahan di Kecamatan Tirtajaya hampir merata disetiap pedesaannya yang mana sistem pemerintahan daerah di atur dalam sistem pemerintahan Otonomi Daerah Jawa barat dan memberikan kebijakan di daerah yang pengawasannya di bantu oleh kepala Daerah tingkat II/ Bupati.

Kecamatan Tirtajaya secara administratif terdiri atas 11 desa, 49 dusun, 51 Rukun warga dan 135 Rukun Tetangga.

Nama-nama desa di Kecamatan Tirtajaya

1. Desa Medankarya
2. Desa Pisangsambo
3. Desa Sabajaya
4. Desa Gempolkarya
5. Desa Srijaya
6. Desa Kutamakmur
7. Desa Bolang
8. Desa Srikamulyan
9. Desa Sumurlaban
10. Desa Tambaksumur
11. Desa Tambaksari

The administration in Tirtajaya Subdistrict is almost evenly distributed in every village where the regional government system is regulated in the West Java Regional Autonomy system and provides policies in the regions whose supervision is assisted by the head of the Regional Level II / Regent.

Administratively, Tirtajaya sub-district consists of 11 villages, 49 hamlets, 51 residents and 135 neighborhood units.

The names of villages in Tirtajaya subdistrict

- 1. Medankarya Village*
- 2. Pisangsambo Village*
- 3. Sabajaya Village*
- 4. Gempolkarya Village*
- 5. Srijaya Village*
- 6. Kutamakmur Village*
- 7. Bolang Village*
- 8. Srikamulyan Village*
- 9. Sumurlaban Village*
- 10. Tambaksumur Village*
- 11. Tambaksari Village*

6. Pemerintahan/ Government

Tabel 6.1.1 **Keadaan Desa Berdasarkan Status Hukum di Kecamatan Tirtajaya, 2018**
Table 6.1.1 **Village Conditions Based on Legal Status in Tirtajaya Subdistrict, 2018**

		Dasar Hukum/ Legal Basis		
	Desa/Village	SK Mendagri/ Decree of the Minister of Home Affairs	SK Gubernur/ Governor's Decree	Lainnya/ Others
	[1]	[2]	[3]	[4]
001	Medankarya	1	-	-
002	Pisangsambo	1	-	-
003	Sabajaya	1	-	-
004	Gempolkarya	1	-	-
005	Srijaya	1	-	-
006	Kutamakmur	1	-	-
007	Bolang	1	-	-
008	Srikamulyan	-	1	-
009	Sumurlaban	1	-	-
010	Tambaksumur	1	-	-
011	Tambaksari	1	-	-

Sumber/Source: Kantor Desa di Kecamatan Tirtajaya/Village Office in Tirtajaya Subdistrict

Tabel
Table 6.1.2

Status dan Klasifikasi Desa di Kecamatan Tirtajaya, 2018
Village Classification and Status in Tirtajaya Subdistrict, 2018

Desa/Village	Status		Klasifikasi/ Classification		
	Perkotaan/ Urban	Pedesaan/ Rural	Swadaya /Self-help	Swakarya/ Self- developing	Swasembada/ Self-sufficiency
[1]	[2]	[3]	[4]	[5]	[6]
001 Medankarya		v			
002 Pisangsambo		v			
003 Sabajaya		v			
004 Gempolkarya		v			
005 Srijaya		v			
006 Kutamakmur		v			
007 Bolang		v			
008 Srikamulyan		v			
009 Sumurlaban		v			
010 Tambaksumur		v			
011 Tambaksari		v			

Sumber/Source: Kantor Desa di Kecamatan Tirtajaya/ Village Office in Tirtajaya Subdistrict

Tabel
Table

6.1.3

Klasifikasi Desa di Kecamatan Tirtajaya, 2018
Village Classification in Tirtajaya Subdistrict, 2018

Klasifikasi Desa/ Village Classification		
Desa/Village	Tertinggal/ Backward Village	Tidak Tertinggal/ Non-Backward Village
[1]	[2]	[3]
001 Medankarya		v
002 Pisangsambo		v
003 Sabajaya		v
004 Gempolkarya		v
005 Srijaya		v
006 Kutamakmur		v
007 Bolang		v
008 Srikamulyan		v
009 Sumurlaban		v
010 Tambaksumur		v
011 Tambaksari		v

Sumber/Source: Kantor Desa di Kecamatan Tirtajaya/ Village Office in Tirtajaya Subdistrict

Tabel
Table 6.1.4

Banyaknya Dusun, Rukun Warga dan Rukun Tetangga menurut Desa di kecamatan Tirtajaya, 2018
Number of hamlets, neighborhood groups and neighborhood units by village in Tirtajaya sub-Subdistrict, 2018

Desa/Village	Banyaknya		
	Dusun	RW/ Citizens Association	RT/ Neighborhood Association
[1]	[2]	[3]	[4]
001 Medankarya	4	4	13
002 Pisangsambo	4	6	12
003 Sabajaya	5	5	15
004 Gempolkarya	3	3	10
005 Srijaya	4	4	13
006 Kutamakmur	3	5	10
007 Bolang	3	3	12
008 Srikamulyan	4	4	8
009 Sumurlaban	4	6	9
010 Tambaksumur	7	8	16
011 Tambaksari	7	7	17
Tirtajaya	48	55	135

Sumber/Source: Kantor Desa di Kecamatan Tirtajaya/Village Office in Tirtajaya Subdistrict

Tabel 6.1.5 **Jumlah Hansip menurut Status Tugas dan desa di Kecamatan Tirtajaya, 2018**
Table 6.1.5 **Number of Hansip by Task Status and villages in Tirtajaya Subdistrict, 2018**

		Status Tugas Hansip/ civil defense duty status			Jumlah/ Total
Desa/Village		Inti/ Core	Satgas/ Task force	Terdaftar/ Registered	
	[1]	[2]	[3]	[4]	[5]
001	Medankarya	10	1	-	11
002	Pisangsambo	10	1	-	11
003	Sabajaya	10	1	-	11
004	Gempolkarya	10	1	2	13
005	Srijaya	10	3	-	13
006	Kutamakmur	10	3	-	13
007	Bolang	10	1	9	20
008	Srikamulyan	10	1	-	11
009	Sumurlaban	10	1	-	11
010	Tambaksumur	10	1	-	11
011	Tambaksari	10	1	11	22
Tirtajaya		110	15	22	147

Sumber/Source: Kantor Desa di Kecamatan Tirtajaya/ Village Office in Tirtajaya Subdistrict

Tabel
Table 6.1.6

Jumlah Sarana Keamanan Lingkungan menurut Desa di Kecamatan Tirtajaya, 2018
Number of Environmental Safety Facilities by Village in Tirtajaya Subdistrict, 2018

	Desa/Village	Polsek/ Sectoral Police	Pos Polisi/ Police Station
	[1]	[2]	[3]
001	Medankarya	-	-
002	Pisangsambo	-	-
003	Sabajaya	-	-
004	Gempolkarya	-	-
005	Srijaya	-	-
006	Kutamakmur	-	-
007	Bolang	-	-
008	Srikamulyan	-	-
009	Sumurlaban	-	-
010	Tambaksumur	1	-
011	Tambaksari	-	-
	Tirtajaya	1	-

Sumber/Source: Kantor Desa di Kecamatan Tirtajaya/Village Office in Tirtajaya Subdistrict

Tabel
Table 6.1.7

Nama kepala desa, umur dan pendidikan yang ditamatkan dirinci menurut desa di Kecamatan Tirtajaya
Name of Village Head, Age, and Highest Education Completed by Village in Tirtajaya Subdistrict, 2018

	Desa/Village	Nama Kepala Desa/ Name of Head Village	Umur/ Age	Pendidikan/ Educational Attainment
	[1]	[2]	[3]	[4]
001	Medankarya	Nurhali	46	SMA/SEDERAJAT
002	Pisangsambo	H. Otang	44	SMA/SEDERAJAT
003	Sabajaya	Andri	32	SMA/SEDERAJAT
004	Gempolkarya	Acep	49	SMA/SEDERAJAT
005	Srijaya	Nursin	53	SMA/SEDERAJAT
006	Kutamakmur	H Laing	50	SMA/SEDERAJAT
007	Bolang	Jaenudin	55	SMA/SEDERAJAT
008	Srikamulyan	Halim	43	SMA/SEDERAJAT
009	Sumurlaban	Tamin	49	SMA/SEDERAJAT
010	Tambaksumur	Sahata	55	SMA/SEDERAJAT
011	Tambaksari	Eji Ruswandi	50	SMA/SEDERAJAT

Sumber/Source: Kantor Desa di Kecamatan Tirtajaya/ Village Office in Tirtajaya Subdistrict

Tabel
Table 6.1.8

Keberadaan Lokasi Sarana Perkantoran menurut Desa di Kecamatan Tirtajaya, 2018
Existence of Office Facilities Locations by Village in Tirtajaya Subdistrict, 2018

Desa/Village	Pemkab/ Subistrict government	Kecamatan/ Dinas OPD/ Instansi	Polri/ Police	TNI/ Army	Lainnya/ Others
[1]	[2]	[3]	[4]	[5]	[6]
001 Medankarya	-	-	-	-	-
002 Pisangsambo	-	-	-	-	-
003 Sabajaya	-	1	-	-	3
004 Gempolkarya	-	-	-	-	-
005 Srijaya	-	-	-	-	-
006 Kutamakmur	-	-	-	-	-
007 Bolang	-	-	-	-	-
008 Srikamulyan	-	-	-	-	-
009 Sumurlaban	-	-	-	-	-
010 Tambaksumur	-	-	-	-	1
011 Tambaksari	-	-	-	-	-
Tirtajaya	-	1	-	-	4

Sumber/Source: Kantor Desa di Kecamatan Tirtajaya/ Village Office in Tirtajaya Subdistrict

BAB 7

KEUANGAN dan KEUANGAN DAERAH

Finance and Regional Finance



ULASAN

DESCRIPTION

Di kecamatan Tirtajaya terdapat 1 Unit Bank Rakyat Indonesia, yang merupakan unit Pisangsambo yang terdapat di desa Pisangsambo, Jumlah karyawan 11 Yang terdiri atas 1 orang kepala Unit, 2 orang Customer Service, 2 orang Teller, 4 orang Mantri (AO), 1 orang Satpam dan 1 orang Penjaga Malam. Terdapat juga 1 orang office boy tetapi tidak termasuk ke dalam struktur organisasi unit BRI.

Di unit ini tersedia satu buah mesin ATM yang digunakan oleh nasabah di Kecamatan Tirtajaya dan Kecamatan sekitarnya (Kecamatan Batujaya dan Jayakarta).

In Tirtajaya subdistrict, there is 1 Bank Rakyat Indonesia Unit, which is a Pisangsambo unit in Pisangsambo village, 11 employees consisting of 1 Head of Unit, 2 Customer Service, 2 Teller, 4 Mantri (AO), 1 Security Guard and 1 night watchman. There is also one office boy but is not included in the organizational structure of the BRI unit.

In this unit, there is one ATM machine that is used by customers in Tirtajaya Subdistrict and surrounding Districts (Batujaya and Jayakarta Sudistricts).

Tabel
Table 7.1.1

Banyaknya Lembaga Keuangan menurut Jenis dan Desa di Kecamatan Tirtajaya, 2018
Number of Financial Institutions by Type and Village in Tirtajaya Subdistrict, 2018

Desa/ Village	Kantor Cabang Bank/ Bank Branch Office	KCP Bank/ Sub-Branch Office	Kantor Unit Bank/ Unit Office	Kantor Kas Bank/ Cash Office	BPR/ BPRS/ Rural Bank/ Islamic Rural Bank	Pega- daian/ Pawnshop	Koperasi/ Cooperative	Lembaga Pembiayaan/ Lainnya/ Financial institutions / Others
[1]	[2]	[3]	[4]	[5]	[6]	[7]	[8]	[9]
001 Medankarya	-	-	-	-	-	-	-	-
002 Pisangsambo	-	-	1	-	-	-	1	-
003 Sabajaya	-	-	-	-	-	-	-	-
004 Gempolkarya	-	-	-	-	-	-	-	-
005 Srijaya	-	-	-	-	-	-	-	-
006 Kutamakmur	-	-	-	-	-	-	-	-
007 Bolang	-	-	-	-	-	-	-	-
008 Srikamulyan	-	-	-	-	-	-	-	-
009 Sumurlaban	-	-	-	-	-	-	-	-
010 Tambaksumur	-	-	-	-	-	-	-	-
011 Tambaksari	-	-	-	-	-	-	-	-
Tirtajaya	-	-	1	-	-	-	1	-

Sumber/Source: Kantor Desa di Kecamatan Tirtajaya/ Village Office in Tirtajaya Subdistrict

Tabel
Table 7.1.2

Banyaknya Fasilitas Perkreditan Usaha yang Diterima menurut Jenis dan Desa di Kecamatan Tirtajaya, 2018
Number of Business Credit Facilities Received by Type and Village in Tirtajaya Subdistrict, 2018

Desa/ Village	KKP/ Food Security Credit	KUK/ Small Business Credit	KUR/ People's Business Credit	KUBE/ Joint Business Group	PNPM/ National Community Empowerment Program	Lainnya/ Others	Jumlah/ Total
[1]	[2]	[3]	[4]	[5]	[6]	[7]	[8]
001 Medankarya	-	1	-	-	1	-	2
002 Pisangsambo	-	-	1	-	-	-	1
003 Sabajaya	-	-	-	-	-	-	-
004 Gempolkarya	-	-	10	-	-	-	10
005 Srijaya	-	-	-	-	-	-	-
006 Kutamakmur	-	-	-	-	-	-	-
007 Bolang	-	-	-	-	-	-	-
008 Srikamulyan	-	-	1	-	-	-	1
009 Sumurlaban	-	-	-	5	-	5	10
010 Tambaksumur	-	-	-	-	-	-	-
011 Tambaksari	-	-	-	-	-	-	-
Tirtajaya	-	1	12	5	1	5	24

Sumber/Source: Kantor Desa di Kecamatan Tirtajaya/ Village Office in Tirtajaya Subdistrict

Tabel
Table 7.1.3

Banyaknya Tenaga Kerja Sektor Jasa Keuangan menurut Jenis dan Desa di Kecamatan Tirtajaya, 2018
Number of Workers in the Financial Services Sector by Type and Village in Tirtajaya Subdistrict, 2018

Desa/ Village	Kantor Cabang Bank/ Bank Branch Office	KCP Bank/ Bank Sub-Branch Office	Kantor Unit Bank/ Bank Unit Office	Kantor Kas Bank/ Cash Office	BPR/ BPRS/ Rural Bank/ Islamic Rural Bank	Pega-daian/ Pawnshop	Koperasi/ Cooperative	Lembaga Pembiayaan/ Lainnya/ Financial institutions / Others
[1]	[2]	[3]	[4]	[5]	[6]	[7]	[8]	[9]
001 Medankarya	-	-	-	-	-	-	-	-
002 Pisangsambo	-	-	11	-	-	-	4	-
003 Sabajaya	-	-	-	-	-	-	-	-
004 Gempolkarya	-	-	-	-	-	-	-	-
005 Srijaya	-	-	-	-	-	-	-	-
006 Kutamakmur	-	-	-	-	-	-	-	-
007 Bolang	-	-	-	-	-	-	-	-
008 Srikamulyan	-	-	-	-	-	-	-	-
009 Sumurlaban	-	-	-	-	-	-	-	-
010 Tambaksumur	-	-	-	-	-	-	-	-
011 Tambaksari	-	-	-	-	-	-	-	-
Tirtajaya	-	-	11	-	-	-	4	-

Sumber/Source: Kantor Desa di Kecamatan Tirtajaya/ Village Office in Tirtajaya Subdistrict

DATA

MENCERDASKAN BANGSA

--Enlighten The Nation--



BADAN PUSAT STATISTIK KABUPATEN KARAWANG
Jalan Cakradireja Nomor 36, Nagasari, Karawang Barat, 41312
Telepon: (0267) 402250, Faximile: (0267) 8452148
E-mail: kabkarawang@bps.go.id
Website <https://karawangkab.bps.go.id>