



KECAMATAN BAITURRAHMAN

DALAM ANGKA

2024



**BADAN PUSAT STATISTIK
KOTA BANDA ACEH**

<https://bandaacehkota.bps.go.id>

KECAMATAN BAITURRAHMAN 2024

DALAM ANGKA



**BADAN PUSAT STATISTIK
KOTA BANDA ACEH**

KECAMATAN BAITURRAHMAN DALAM ANGKA
Baiturrahman Subdistrict in Figures
2024

ISSN: -

No. Publikasi/*Publication Number*: 11710.24019

Katalog /*Catalog*:1102001.1171012

Ukuran Buku/*Book Size*: 14,8 cm x 21 cm

Jumlah Halaman/*Number of Pages* : xxix + 92 hal/*pages*

Naskah/*Manuscript*:

BPS Kota Banda Aceh

BPS-Statistics of Banda Aceh Municipality

Penyunting/*Editor*:

BPS Kota Banda Aceh

BPS-Statistics of Banda Aceh Municipality

Desain Kover/*Cover Design*:

BPS Kota Banda Aceh

BPS-Statistics of Banda Aceh Municipality

Ilustrasi Kover/*Cover Illustration*:

Mesjid Raya Baiturrahman

Diterbitkan oleh/*Published by*:

©BPS Kota Banda Aceh/*BPS-Statistics of Banda Aceh Municipality*

Dicetak oleh/*Printed by*:

CV. Norif

Dilarang mengumumkan, mendistribusikan, mengomunikasikan, dan/atau menggandakan sebagian atau seluruh isi buku ini untuk tujuan komersil tanpa izin tertulis dari Badan Pusat Statistik Kota Banda Aceh.

Prohibited to announce, distribute, communicate, and/or copy part or all of this book for commercial purpose without permission from BPS-Statistics Indonesia of Banda Aceh Municipality.

TIM PENYUSUN/TEAM MEMBERS

Pengarah/Director

Tedi Herdiawan, S.Sos., M.A.P

Penanggung Jawab/Persons in Charge

Rochadi, S.ST

Penyunting/Editors

Muhammad Aja Fajrian, SST, M.Si

Pengolah Data dan Penulis Naskah/Data Processor and Writers

Kesuma Millati, S.Stat

Penata Letak/Layout Designers

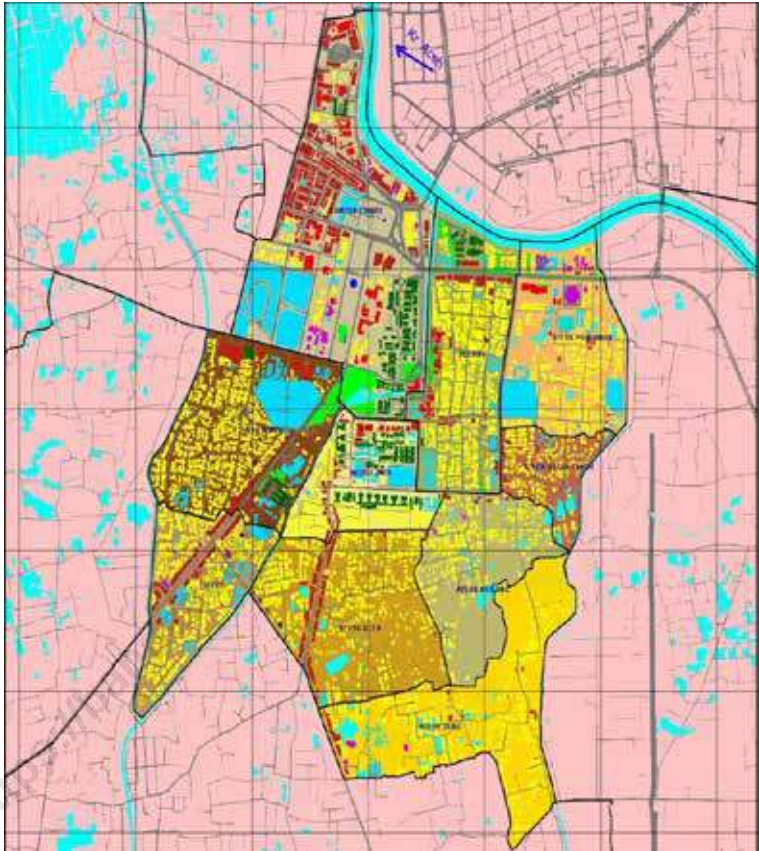
Kesuma Millati, S.Stat

<https://bandaacehkota.kab.go.id>

KONTRIBUTOR DATA/DATA CONTRIBUTORS

1. Kementerian Agama/*Ministry of Religious Affair*
2. Kementerian Pendidikan dan Kebudayaan/*Ministry of Education and Culture*
3. Badan Pusat Statistik/*BPS-Statistics Indonesia*
4. BPS, Pendataan Potensi Desa (Podes) 2021/*BPS-Statistics Indonesia, Village Potential Data Collecting 2021*
5. Kantor Camat/*Subdistrict Office*
6. Komando Rayon Militer/*Military District Command*
7. Kepolisian Sektor/*Sektor Sector Police*
8. Kantor Keuchik/*Village Office*
9. Dinas Pemberdayaan Masyarakat dan Gampong Kota Banda Aceh/*Community and Village Empowerment Service of Banda Aceh Municipality*
10. Dinas Kependudukan dan Pencatatan Sipil Kota Banda Aceh/*Population and Civil Registration Service of Banda Aceh Municipality*
11. BPS, Statistik Pertanian Hortikultura SPH-SBS/*BPS-Statistics Indonesia, Agricultural Statistic for Horticulture SPH-SBS*
12. Dinas Pangan, Pertanian, Kelautan, dan Perikanan Kota Banda Aceh/*Food, Agriculture, Marine, and Fishery Service of Banda Aceh Municipality*

PETA WILAYAH KECAMATAN BAITURRAHMAN
MAP OF BAITURRAHMAN SUBDISTRICT



KEPALA BPS KOTA BANDA ACEH
CHIEF STATISTICIAN OF BANDA ACEH MUNICIPALITY



TEDI HERDIWAN, S.SOS., M.A.P



KATA PENGANTAR

Publikasi “Kecamatan Baiturrahman Dalam Angka Tahun 2024” ini merupakan publikasi rutin tahunan Badan Pusat Statistik Kota Banda Aceh. Selain sebagai dasar evaluasi dan perencanaan pembangunan, publikasi ini menyajikan capaian hasil pembangunan dan keadaan sosial ekonomi penduduk Kecamatan Baiturrahman pada tahun 2023.

Data yang ditampilkan dalam publikasi ini dihimpun oleh Koordinator Statistik Kecamatan dari berbagai instansi, baik kecamatan maupun pemerintah kota termasuk data statistik yang dihasilkan oleh Badan Pusat Statistik Kota Banda Aceh.

Akhirnya kepada semua pihak yang telah membantu dan bekerjasama hingga terbitnya publikasi ini, kami ucapkan terima kasih dan semoga bermanfaat bagi kita semua.

Banda Aceh , September 2024
Kepala BPS
Kota Banda Aceh

TEDI HERDIAWAN, S.SOS., M.A.P



PREFACE

The publication of “Baiturrahman Subdistrict in Figures in 2024” is an annual publication of the Central Bureau of Statistics of Banda Aceh City. Aside from being a basis for evaluation and development planning, this publication presents the achievements of development results and the socio-economic conditions of the residents of Baiturrahman District in 2023.

The data presented in this publication was compiled by the District Statistics Coordinator from various agencies, both sub-district and city governments, including statistical data produced by the Central Bureau of Statistics of Banda Aceh City.

Finally, to all those who have helped and cooperated until the publication of this publication, we thank you and hope it will be useful for all of us.

*Banda Aceh , September 2023
Chief Statistician of
Banda Aceh Municipality*

TEDI HERDIWAN, S.SOS., M.A.P

DAFTAR ISI/CONTENTS

	Halaman <i>Page</i>
Kata Pengantar.....	xiii
Preface.....	xiv
Daftar Isi/ Contents	xv
Daftar Tabel/ List of Tables	xvii
Penjelasan Umum/ Explanatory Notes	xxvi
Daftar Singkatan/ List of Abbreviation	xxviii
1. Geografi dan Iklim/ <i>Geography and Climate</i>	1
2. Pemerintahan/ <i>Government</i>	5
3. Penduduk/ <i>Population</i>	21
4. Sosial dan Kesejahteraan Rakyat/ <i>Social and Welfare</i>	29
5. Pertanian/ <i>Agriculture</i>	65
6. Pariwisata, Transportasi, dan Komunikasi/ <i>Tourism, Transportation, and Communication</i>	77
7. Perbankan, Koperasi, dan Perdagangan/ <i>Banking, Cooperative, and Trade</i>	85

DAFTAR TABEL/LIST OF TABLES

	Halaman Page
1. GEOGRAFI DAN IKLIM/GEOGRAPHY AND CLIMATE	
1.1 KEADAAN GEOGRAFI GEOGRAPHY CONDITION	
1.1.1 Luas Daerah Menurut Gampong di Kecamatan Baiturrahman, 2021 <i>Total Area by Villages in Baiturrahman Subdistrict, 2021</i>	3
1.1.2 Jarak ke Ibukota Kecamatan dan Ibukota Kabupaten/Kota Menurut Gampong di Kecamatan Baiturrahman (km), 2021 <i>Distance to the Subdistrict Capital and Regency/Municipal Capital by Villages in Baiturrahman Subdistrict (km), 2021</i>	4
2. PEMERINTAHAN/GOVERNMENT	
2.1 WILAYAH ADMINISTRATIF ADMINISTRATIVE AREA	
2.1.1 Status Daerah Menurut Gampong di Kecamatan Baiturrahman, 2023 <i>Regional Status by Village in Baiturrahman Subdistrict, 2023</i>	7
2.1.2 Nama Mukim, Gampong, dan Dusun di Kecamatan Baiturrahman, 2023 <i>Names of Mukim, Village, and Dusun in Baiturrahman Subdistrict, 2023</i>	8
2.2 SUMBER DAYA MANUSIA HUMAN RESOURCES	
2.2.1 Nama Camat, Pendidikan, dan Masa Jabatan di Kecamatan Baiturrahman Sejak Tahun 1984 – 2023 <i>Name of Subdistrict Head, Education, and Term of Office in Baiturrahman Subdistrict Since 1984 – 2023</i>	10
2.2.2 Daftar Pegawai pada Sekretariat Kecamatan Baiturrahman Menurut Jabatan dan Pangkat Tahun 2023 <i>List of Employees at the Baiturrahman District Secretariat by Position and Rank in 2023</i>	11

2.2.3	Petugas Bintara Pembina Desa (Babinsa) Menurut Gampong di Kecamatan Baiturrahman, 2023 <i>Village Advisory Officer (Babinsa) According to Gampong in Baiturrahman District, 2023</i>	12
2.2.4	Petugas Bhayangkara Pembina Keamanan dan Ketertiban Masyarakat (Bhabinkamtibmas) Menurut Gampong di Kecamatan Baiturrahman, 2023 <i>Bhayangkara Officer for Community Security and Order (Bhabinkamtibmas) According to Gampong in Baiturrahman District, 2023</i>	13
2.2.5	Nama Keuchik dan Pendidikan yang Ditamatkan Menurut Gampong di Kecamatan Baiturrahman, 2023 <i>Name of Keuchik and Education Completed by Gampong in Baiturrahman Subdistrict, 2023</i>	14
2.2.6	Jumlah Aparat Gampong di Kecamatan Baiturrahman, 2021 <i>Number of Gampong Officials in Baiturrahman Subdistrict, 2021</i>	15
2.2.7	Keberadaan Badan Musyawarah Gampong dan Jumlah Kegiatan Musyawarah Menurut Gampong di Kecamatan Baiturrahman, 2021 <i>Existence of Village Consultative Body and Number of Deliberation Activities by Village in Baiturrahman Subdistrict, 2021</i>	17
2.2.8	Keberadaan Fasilitas Pemerintahan di Dalam Kecamatan Baiturrahman, 2021 <i>Existence of Government Facilities in Baiturrahman Subdistrict, 2021</i>	18
2.2.9	Jumlah Badan Usaha Milik Desa (BUMDes) dan Keberadaan Pasar Desa Menurut Gampong di Kecamatan Baiturrahman, 2021 <i>Number of Village Owned Enterprises (BUMDes) and Existence Village Markets by Gampong in Baiturrahman Subdistrict, 2021</i>	19
2.2.10	Target dan Realisasi APBG Menurut Gampong di Kecamatan Baiturrahman, 2023 <i>APBG Targets and Realization by Gampong in Baiturrahman Subdistrict, 2023</i>	20

3. PENDUDUK/POPULATION

3.1 Penduduk, Distribusi Persentase Penduduk, Kepadatan Penduduk, Rasio Jenis Kelamin Penduduk Menurut Gampong di Kecamatan Baiturrahman, 2023
Population, Percentage Distribution of Population, Population Density, and Population Sex Ratio by Villages in Baiturrahman Subdistrict, 2023 23

3.2 Jumlah Penduduk Menurut Kelompok Umur dan Jenis Kelamin di Kecamatan Baiturrahman, 2023
Population by Age Groups and Sex in Baiturrahman Subdistrict, 2023 25

3.3 Sebaran Penduduk dan Luas Wilayah Menurut Gampong dalam Kecamatan Baiturrahman, 2023
Distribution of Population and Area by Village in Baiturrahman Subdistrict, 2023 26

3.4 Jumlah KK (Kepala Keluarga) Menurut Gampong di Kecamatan Baiturrahman, 2023
Number of Family by Village in Baiturrahman Subdistrict, 2023 27

4. SOSIAL DAN KESEJAHTERAAN RAKYAT/SOCIAL AND WELFARE

**4.1 PENDIDIKAN
EDUCATION**

4.1.1 Banyaknya Gampong yang Memiliki Fasilitas Sekolah Menurut Tingkat Pendidikan di Kecamatan Baiturrahman, 2021
Number of Villages Having Educational Facilities by Educational Level in Baiturrahman Subdistrict, 2021 31

4.1.2 Jumlah Sekolah Menurut Tingkat Pendidikan di Kecamatan Baiturrahman, 2023/2024
Number of Schools by Educational Level in Baiturrahman Subdistrict, 2023/2024 32

4.1.3 Jumlah Guru Menurut Tingkat Pendidikan di Kecamatan Baiturrahman, 2023/2024
Number of Teachers by Educational Level in Baiturrahman Subdistrict, 2023/2024 33

4.1.4	Jumlah Murid Menurut Tingkat Pendidikan di Kecamatan Baiturrahman, 2023/2024 <i>Number of Pupils by Educational Level in Baiturrahman Subdistrict, 2023/2024</i>	34
4.1.5	Banyaknya Sekolah Dasar (SD) Menurut Gampong di Kecamatan Baiturrahman, 2021/2022 <i>Number of Elementary Schools (SD) by Villages in Baiturrahman Subdistrict, 2020/2021</i>	35
4.1.6	Banyaknya Madrasah Ibtidaiyah (MI) Menurut Gampong di Kecamatan Baiturrahman, 2021/2022 <i>Number of Madrasah Ibtidaiyah (MI) by Villages in Baiturrahman Subdistrict, 2021/2022</i>	36
4.1.7	Banyaknya Sekolah Menengah Pertama (SMP) Menurut Gampong di Kecamatan Baiturrahman, 2021/2022 <i>Number of Junior High School (SD) by Villages in Baiturrahman Subdistrict, 2021/2022</i>	37
4.1.8	Banyaknya Madrasah Tsanawiyah (MTs) Menurut Gampong di Kecamatan Baiturrahman, 2021/2022 <i>Number of Madrasah Tsanawiyah (MTs) by Villages in Baiturrahman Subdistrict, 2021/2022</i>	38
4.1.9	Banyaknya Sekolah Menengah Atas (SMA) Menurut Gampong di Kecamatan Baiturrahman, 2021/2022 <i>Number of Senior High School (SMA) by Villages in Baiturrahman Subdistrict, 2021/2022</i>	39
4.1.10	Banyaknya Madrasah Aliyah (MA) Menurut Gampong di Kecamatan Baiturrahman, 2021/2022 <i>Number of Madrasah Aliyah (MA) by Villages in Baiturrahman Subdistrict, 2021/2022</i>	40
4.1.11	Banyaknya Sekolah Menengah Kejuruan (SMK) Menurut Gampong di Kecamatan Baiturrahman, 2021/2022 <i>Number of Vocational High Schools (SMK) by Villages in Baiturrahman Subdistrict, 2021/2022</i>	41
4.1.12	Banyaknya Akademi/Perguruan Tinggi Menurut Gampong di Kecamatan Baiturrahman, 2021/2022 <i>Number of Academy/College by Villages in Baiturrahman Subdistrict, 2021/2022</i>	42

**4.2 KESEHATAN
HEALTH**

4.2.1 Banyaknya Gampong yang Memiliki Sarana Kesehatan Menurut Jenis Sarana Kesehatan di Kecamatan Baiturrahman, 2021
Number of Villages Health Facilities by Type of Health Facilities in Baiturrahman Subdistrict, 2021 43

4.2.2 Banyaknya Warga Penderita Kekurangan Gizi Menurut Gampong di Kecamatan Baiturrahman, 2020
Number of People with Malnutrition by Villages/Kelurahan in Baiturrahman Subdistrict, 2020 44

**4.3 PERUMAHAN DAN LINGKUNGAN
HOUSING AND ENVIRONMENT**

4.3.1 Banyaknya Gampong Menurut Sumber Air Minum Sebagian Besar Keluarga di Kecamatan Baiturrahman, 2021
Number of Villages by Drinking Water Source of Majority Family in Baiturrahman Subdistrict, 2021 45

4.3.2 Banyaknya Keluarga Menurut Gampong dan Jenis Pengguna Listrik di Kecamatan Baiturrahman, 2021
Number of Family by Villages and Type of Electricity Consumer in Baiturrahman Subdistrict, 2021 46

4.3.3 Banyaknya Gampong Menurut Sumber Penerangan Jalan Utama Gampong di Kecamatan Baiturrahman, 2021
Number of Villages by Source of Villages/Kelurahan's Main Street Illumination in Baiturrahman Subdistrict, 2021 47

4.3.4 Banyaknya Gampong Menurut Penggunaan Fasilitas Tempat Buang Air Besar Sebagian Besar Keluarga di Kecamatan Baiturrahman, 2021
Number of Villages by Toilet Facility Used by Majority Family in Baiturrahman Subdistrict, 2021 48

4.3.5 Banyaknya Gampong Menurut Jenis Bahan Bakar untuk Memasak yang Digunakan Sebagian Besar Keluarga di Kecamatan Baiturrahman, 2021
Number of Villages by Type of Cooking Fuel Used by Majority Family in Baiturrahman Subdistrict, 2021 49

4.4 AGAMA DAN SOSIAL LAINNYA

RELIGION AND OTHER SOCIAL AFFAIRS

4.4.1	Jumlah Tempat Peribadatan Menurut Gampong di Kecamatan Baiturrahman, 2021 <i>Number of Worship Places by Villages in Baiturrahman Subdistrict, 2021</i>	50
4.4.2	Banyaknya Kejadian Bencana Alam Menurut Gampong dan Jenis Bencana Alam di Kecamatan Baiturrahman, 2020 <i>Number of Natural Disaster Events by Villages and Type of Natural Disaster in Baiturrahman Subdistrict, 2020</i>	51
4.4.3	Banyaknya Korban Jiwa Akibat Bencana Alam Menurut Gampong dan Jenis Bencana Alam di Kecamatan Baiturrahman, 2020 <i>Number of Fatalities Due to Natural Disasters by Villages and Type of Natural Disaster in Meraxa Subdistrict, 2020</i>	54
4.4.4	Keberadaan Fasilitas/Upaya Antisipasi/Mitigasi Bencana Alam Menurut Gampong di Kecamatan Baiturrahman, 2021 <i>Existence of Facilities/Efforts for Anticipation/Mitigation of Natural Disasters by Villages by Villages in Baiturrahman Subdistrict, 2021</i>	57
4.4.5	Banyaknya Gampong yang Memiliki Kelompok Kegiatan Olahraga Menurut Jenis Olahraga dan Ketersediaan Fasilitas/Lapangan Olahraga di Kecamatan Baiturrahman, 2021 <i>Number of Villages Having Sport Activities Groups by Type of Sport and Availability of Sport Facilities/Fields in Baiturrahman Subdistrict, 2021</i>	59
4.4.6	Jumlah Kejahatan Menurut Gampong di Kecamatan Baiturrahman, 2023 <i>Number of Crimes by Villages in Baiturrahman Subdistrict, 2022</i>	60
4.4.7	Jumlah Nikah, Cerai Gugat, dan Cerai Talak Menurut Gampong di Kecamatan Baiturrahman, 2023 <i>Number of Marriages, Divorce by Talak, and Divorce by Petition by Villages in Baiturrahman Subdistrict, 2023</i>	62
4.4.8	Jumlah Dayah, Balai Pengajian, TPA, dan Majelis Ta'lim Menurut Gampong di Kecamatan Baiturrahman, 2023 <i>Number of Dayah, Islamic Recitation, Al-Qur'an Recitation House, and Majelis Ta'lim Villages in Baiturrahman Subdistrict, 2023</i>	63

5. PERTANIAN/AGRICULTURE

5.1	Luas Panen Tanaman Sayuran dan Buah-buahan Semusim Menurut Jenis Tanaman di Kecamatan Baiturrahman (ha), 2020–2023 <i>Harvested Area of Seasonal Vegetables and Fruits by Kind of Plant in Baiturrahman Subdistrict (ha), 2020–2023</i>	67
5.2	Produksi Tanaman Sayuran dan Buah-buahan Semusim Menurut Jenis Tanaman di Kecamatan Baiturrahman (kuintal), 2020–2023 <i>Production of Seasonal Vegetables and Fruits by Kind of Plant in Baiturrahman Subdistrict (quintal), 2020–2023</i>	68
5.3	Luas Panen Tanaman Biofarmaka Menurut Jenis Tanaman di Kecamatan Baiturrahman (m ²), 2020–2023 <i>Harvested Area of Medicinal Plants by Kind of Plant in Baiturrahman Subdistrict (m²), 2020–2023</i>	69
5.4	Produksi Tanaman Biofarmaka Menurut Jenis Tanaman di Kecamatan Baiturrahman (kg), 2020–2023 <i>Production of Medicinal Plants by Kind of Plant in Baiturrahman Subdistrict (kg), 2020–2023</i>	70
5.5	Luas Panen Tanaman Hias Menurut Jenis Tanaman di Kecamatan Baiturrahman (m ²), 2020–2023 <i>Harvested Area of Ornamental Plants by Kind of Plant in Baiturrahman Subdistrict (m²), 2020–2023</i>	71
5.6	Produksi Tanaman Hias Menurut Jenis Tanaman di Kecamatan Baiturrahman (tangkai), 2020–2023 <i>Production of Ornamental Plants by Kind of Plant in Baiturrahman Subdistrict (stalks), 2020–2023</i>	72
5.7	Produksi Buah-Buahan dan Sayuran Tahunan Menurut Jenis Tanaman di Kecamatan Baiturrahman (kuintal), 2020–2023 <i>Production of Annual Fruits and Vegetables by Kind of Plant in Baiturrahman Subdistrict (quintal), 2020–2023</i>	73
5.8	Jumlah Ternak Besar Menurut Jenisnya per Gampong di Kecamatan Baiturrahman, 2023 <i>Number of Large Livestock by Type per Gampong in Baiturrahman Subistrict, 2023</i>	74

5.9	Jumlah Ternak Unggas Menurut Jenisnya per Gampong di Kecamatan Baiturrahman, 2023 <i>Number of Poultry Livestock by Type per Gampong in Baiturrahman Subdistrict, 2023</i>	75
6.	PARIWISATA, TRANSPORTASI, DAN KOMUNIKASI/TOURISM, TRANSPORTATION, AND COMMUNICATION	
6.1	PARIWISATA TOURISM	
6.1.1	Jumlah Sarana Akomodasi Menurut Gampong dan Jenis Akomodasi di Kecamatan Baiturrahman, 2021 <i>Number of Accomodation Facilities by Villages and Type of Accomodation in Baiturrahman Subdistrict, 2021</i>	79
6.2	TRANSPORTASI TRANSPORTATION	
6.2.1	Prasarana dan Sarana Transportasi Antar Gampong Menurut Gampong di Kecamatan Baiturrahman, 2021 <i>Inter-Villages Transportation Infrastructure and Facilities by Villages in Baiturrahman Subdistrict, 2021</i>	80
6.3	KOMUNIKASI COMMUNICATION	
6.3.1	Keberadaan Kantor Pos/Pos Pembantu/Rumah Pos, Pos Keliling, dan Perusahaan/Agen Jasa Ekspedisi Swasta Menurut Gampong di Kecamatan Baiturrahman, 2021 <i>Number of Post Office/Subsidiary of Post Office, Mobile Portal Service, Private Expedition Service Company by Villages in Baiturrahman Subdistrict, 2021</i>	82
6.3.2	Jumlah Menara Telepon seluler dan Operator Layanan Komunikasi Telepon Seluler Menurut Gampong di Kecamatan Baiturrahman, 2021 <i>Number of Base Transceiver Station (BTS) and Cellular Phone Communication Service Operators by Villages in Baiturrahman Subdistrict, 2021</i>	83

6.3.3	Kekuatan Sinyal Telepon Seluler dan Jenis Sinyal Internet Telepon Seluler Menurut Gampong di Kecamatan Baiturrahman, 2021 <i>The Strenght of Celular Phone Signal by Villages in Baiturrahman Subdistrict, 2021</i>	84
7.	PERBANKAN, KOPERASI, DAN PERDAGANGAN/BANKING, COOPERATIVE, AND TRADE	
7.1	Banyaknya Sarana Lembaga Keuangan Bank Menurut Gampong dan Jenis Bank di Kecamatan Baiturrahman, 2021 <i>Number of Bank by Villages and Type of Bank in Baiturrahman Subdistrict, 2021</i>	87
7.2	Banyaknya Koperasi Aktif Menurut Menurut Gampong dan Jenis Koperasi di Kecamatan Baiturrahman, 2021 <i>Number of Cooperative by Villages and Type of Cooperative in Baiturrahman Subdistrict, 2021</i>	88
7.3	Banyaknya Sarana Perdagangan Menurut Gampong dan Jenis Sarana Perdagangan di Kecamatan Baiturrahman, 2021 <i>Number of Trade Facilities by Villages and Type of Trade Facilities in Baiturrahman Subdistrict, 2021</i>	90

PENJELASAN UMUM/EXPLANATORY NOTES

Tanda-tanda, satuan-satuan, dan lain-lainnya yang digunakan dalam publikasi ini adalah sebagai berikut:

Symbols, measurement units, and acronyms which are used in this publication, are as follows:

1. TANDA-TANDA/SYMBOLS

Data tidak tersedia/ <i>Data not available</i>	: ...
Tidak ada atau nol / <i>Null or zero</i>	: -
Data dapat diabaikan/ <i>Data negligible</i>	: 0
Tanda decimal/ <i>Decimal point</i>	: ,
Data tidak dapat ditampilkan/ <i>Not applicable</i>	: NA
Angka estimasi/ <i>Estimated figures</i>	: e
Angka diperbaiki/ <i>Revised figures</i>	: r
Angka sementara/ <i>Preliminary figures</i>	: x
Angka sangat sementara/ <i>Very preliminary figures</i>	: xx
Angka sangat sangat sementara/ <i>Very very preliminary figures</i>	: xxx

2. SATUAN/UNITS

barel/ <i>barrel</i>	: 158,99 liter/ <i>litres</i> = 1/6,2898 m ³
hektar (ha)/ <i>hectare (ha)</i>	: 10 000 m ²
kilometer (km)/ <i>kilometres (km)</i>	: 1 000 meter/ <i>meters (m)</i>
knot/ <i>knot</i>	: 1,8523 km/jam (<i>km/hour</i>)
kuintal/ <i>quintal</i>	: 100 kg
KWh	: 1 000 Watt hour
MWh	: 1 000 KWh
liter (untuk beras)/ <i>litre (for rice)</i>	: 0,80 kg
MMSCF	: 1/35,3 m ³
metrik ton (m.ton)/ <i>metric ton (m. ton)</i>	: 0,98421 long ton = 1 000 kg
ons/ <i>ounce</i>	: 28,31 gram/ <i>grams</i>
ton	: 1 000 kg

Satuan lain: buah, dus, butir, helai/lembar, kaleng, batang, pulsa, ton kilometer (ton-km), jam, menit, persen (%).

Other units: unit, pack, pieces, sheet, tin, pulse, ton-kilometres(ton-km), hour, minute, percent (%).

Perbedaan angka di belakang koma disebabkan oleh pembulatan angka.
The difference in decimal numbers is caused by rounding.

DAFTAR SINGKATAN/LIST OF ABBREVIATION

SI	: Stasiun Iklim/ <i>Climate Station</i>
SMPK	: Stasiun Meterologi Pertanian Khusus/ <i>Special Agricultural Meteorological Station</i>
t.t	: Tempat tidur/ <i>Bed</i>
BCG	: Bacillus Calmette Guerin
DPT	: Difteri, Pertusis, Tetanus/ <i>Diphtheria, Tetanus, and Pertussis</i>
TT	: Tetanus Toxoid
IOT	: Industri Obat Tradisional/ <i>Traditional Medicine Industry</i>
IKOT	: Industri Kecil Obat Tradisional/ <i>Traditional Medicine Small Industry</i>
Alkes	: Alat kesehatan/ <i>Health Kits</i>
PKRT	: Perbekalan Kesehatan Rumah tangga/ <i>Household Health Logistics</i>
Kompl	: Komplemen/ <i>Complement</i>
IRTP	: Industri Pangan Produksi Rumah Tangga/ <i>Foods Home Industry</i>
PBF	: Pedagang Besar Farmasi/ <i>Pharmacy Whole-seller</i>
GFK	: Gudang Farmasi Kab/Kota/Regency/ <i>Municipality Pharmacy Warehouse</i>
RB	: Rumah Bersalin/ <i>Delivery House</i>
Pustu	: Puskesmas pembantu/ <i>Auxiliary Public Health Center</i>
BP	: Balai Pengobatan/ <i>Polyclinic</i>
TPS	: Tempat Pembuangan Sampah Sementara / <i>landfill</i>
Jamkesmas	: Jaminan kesehatan masyarakat miskin/ <i>Poor public health insurance</i>
PJKMU	: Program Jaminan Kesehatan Masyarakat Umum/ <i>General Public Health Insurance Program</i>
SIUP	: Surat Ijin Usaha Perdagangan/ <i>Trading Permission Letter</i>
TDP	: Tanda Daftar Perusahaan/ <i>Company Registration Identity</i>
API	: Angka Pengenal Importir/ <i>Importer's Identity Number</i>

BAB 1

GEOGRAFI & IKLIM



1.1 KEADAAN GEOGRAFI GEOGRAPHY CONDITION

Tabel 1.1.1 Luas Daerah Menurut Gampong di Kecamatan Baiturrahman, 2021
Table *Total Area by Villages in Baiturrahman Subdistrict, 2021*

Gampong/ Village	Luas / Total Area (km²/sq,km)	Persentase terhadap Luas Kecamatan/ Percentage to Subdistrict Area
(1)	(2)	(3)
Ateuk Jawo	0,657	13,43
Ateuk Deah Tanoh	0,158	3,22
Ateuk Pahlawan	0,499	10,19
Ateuk Munjeng	0,550	11,24
Neusu Aceh	0,473	9,66
Seutui	0,326	6,67
Sukaramai	0,498	10,17
Neusu Jaya	0,313	6,39
Peuniti	0,488	9,97
Kampung Baru	0,933	19,06
Kecamatan Baiturrahman	4,895	100,00

Sumber/Source: BPS, Pendataan Potensi Desa (Podes) 2021/BPS-Statistics Indonesia, Village Potential Data Collecting 2021

Tabel 1.1.2 **Jarak ke Ibukota Kecamatan dan Ibukota Kabupaten/Kota Menurut Gampong di Kecamatan Baiturrahman (km), 2021**
Distance to the Subdistrict Capital and Regency/Municipal Capital by Villages in Baiturrahman Subdistrict (km), 2021

Gampong/ Village	Jarak ke Ibukota (km) Kecamatan / <i>Distance to Subdistrict Capital (km)</i>	Jarak ke Ibukota Kabupaten/ Kota <i>Distance to Regency/ Municipal Capital</i>
(1)	(2)	(3)
Ateuk Jawo	2	3
Ateuk Deah Tanoh	1	2
Ateuk Pahlawan	1	1
Ateuk Munjeng	1	3
Neusu Aceh	1	1
Seutui	1	1
Sukaramai	1	1
Neusu Jaya	1	1
Peuniti	1	1
Kampung Baru	1	1

Sumber/Source: BPS, Pendataan Potensi Desa (Podes) 2021/BPS-Statistics Indonesia, *Village Potential Data Collecting 2021*

BAB 2

PEMERINTAHAN



2.2 WILAYAH ADMINISTRATIF ADMINISTRATIVE AREA

Tabel 2.2.1 **Status Daerah Menurut Gampong di Kecamatan Baiturrahman, 2023**
Table *Regional Status by Village in Baiturrahman Subdistrict, 2023*

Gampong <i>Village</i>	Status Daerah <i>Regional Status</i>
(1)	(2)
Ateuk Jawo	Perkotaan
Ateuk Deah Tanoh	Perkotaan
Ateuk Pahlawan	Perkotaan
Ateuk Munjeng	Perkotaan
Neusu Aceh	Perkotaan
Seutui	Perkotaan
Sukaramai	Perkotaan
Neusu Jaya	Perkotaan
Peuniti	Perkotaan
Kampung Baru	Perkotaan

Sumber/Source: BPS Kota Banda Aceh/*BPS-Statistics of Banda Aceh Municipality*

Tabel 2.2.2
Table

Nama Mukim, Gampong, dan Dusun di Kecamatan Baiturrahman, 2023
Names of Mukim, Village, and Dusun in Baiturrahman Subdistrict, 2023

Mukim Mukim	Gampong Village	Dusun Dusun
(1)	(2)	(3)
Baiturrahman	Ateuk Jawo	Batee Buli
		Imum
		Lamdom
		Blang Brandang
	Ateuk Deah Tanoh	Cempaka
		Dahlia
		Tuan Digaca
	Ateuk Pahlawan	Surabaya
		Labui
		Teladan
		Pahlawan
		PJKA
	Ateuk Munjeng	Lampoh
		Beulangong
		Blang Kuta
		Pante
Baiturrahman	Peuniti	Fakinah
		Malahayati
		Cut Meutia
		Ratu Safiatuddin
		Cut Nyak Dhien

Lanjutan Tabel/*Continued Table 2.1.2*

Mukim Mukim	Gampong Village	Dusun Dusun
(1)	(2)	(3)
Putroe Phang	Seutui	Sibayak
		Seulawah
		Glee Gurah
		Kulu
		Kerinci
	Sukaramai	Geurutee
		Paro
		Keumala
		Merapi
		Singgalang
	Neusu Jaya	Sentosa
		Bahagia
		Makmur
		Sejahtera
		Mulia
Putroe Phang	Neusu Aceh	H Keuchik Man
		Batee Timoh
		Tuan Meunasah
		Blang Malek
		H Nyak Syam
	Kampung Baru	Jeumpa
		Seulanga
		Teratai
		Anggrek
		Melati
		Keraton

Sumber/*Source*: Kantor Keuchik/*Village Office*

2.2 SUMBER DAYA MANUSIA HUMAN RESOURCES

Tabel 2.2.1 Nama Camat, Pendidikan, dan Masa Jabatan di Kecamatan Baiturrahman Sejak Tahun 1984 – 2023
Table *Name of Subdistrict Head, Education, and Term of Office in Baiturrahman Subdistrict Since 1984 – 2023*

No No	Nama Camat <i>Name of Subdistrict Head</i>	Pendidikan <i>Education</i>	Masa Jabatan <i>Term of Office</i>
(1)	(2)	(3)	(4)
1	Asmara Nasution, BA	D3	1984 – 1989
2	Drs. Hasballah	S1	1989 – 1996
3	Drs. Syahrullah	S1	1996 – 2005
4	Drs. Reza Fahlevi	S1	2005 – 2005
5	Drs. Fahmi, M.Si	S2	2005 – 2008
6	Drs. M. Diwarsyah	S1	2008 – 2010
7	Drs. Muzakkir	S1	2010 – 2011
8	Ria Jelmanita, S.Sos	S1	2011 – 2018
9	Muhammad Rizal, S.STP	S1	2018-2021
10	Rahmat Saiful Bahri, S.Sos. SE. MM	S2	2021-sekarang

Sumber/Source: Kantor Camat Baiturrahman/Baiturrahman Subdistrict Office

Tabel 2.2.2
Table

Daftar Pegawai pada Sekretariat Kecamatan Baiturrahman Menurut Jabatan dan Pangkat Tahun 2023
List of Employees at the Baiturrahman District Secretariat by Position and Rank in 2023

No No	Nama Name	Jabatan Position	Pangkat/Golongan Rank/Class			
			I (4)	II (5)	III (6)	IV (7)
1	Rahmat Saiful Bahri, S.Sos. SE. MM	Camat				√
2	Muhammad Iqbal, S. STP	Sekcam				√
3	Cut Nizawati, S.Sos	Kasi Pelum, Kerjasama dan Informasi			√	
4	Indriati, A. Md	Kasi Keist Aceh dan Kesos			√	
5	Ichsan, S.Tr.Ak	Kasi Pemberdayaan Masyarakat dan Gampong			√	
6	Mahrul Fuaddi, ST. MT	Pj. Kasi Ketentraman dan Ketertiban			√	
7	Rahadian Budhi Handono, SE	Kasubbag Keuangan Program dan Laporan			√	
8	Shella Sofya, S.Sos	Kasubbag Umum Kepegawaian dan Aset			√	
9	Herry Munady, S.STP	Plt. Kasi Pemerintahan, Mukim & Gampong				
10	Laela Cut Mutia, SKM	Pengelola Data			√	
11	T.Hendra TZ,SE	Pengelola Data			√	
12	M. Husin	Pengadministrasi Umum			√	
13	Thaibasih	Pengadministrasi Umum			√	
14	Nuryanto, SE	Pengelola Data				
15	Mauliana , S.Tr.AK	Bendahara			√	
16	Aslinda	Pengelola Data			√	
17	Razual	Pengadministrasi Umum			√	
18	Devi Marlina	Pengadministrasi Persuratan			√	
19	Cut Yunita Elvira	Pengelola Keuangan			√	
20	Indah Lestari, A.Md	Pengelola Keuangan		√		
21	Yusfizar Efendi	Pengadministrasi Umum		√		

Sumber/Source: Kantor Camat Baiturrahman/Baiturrahman Subdistrict Office

Tabel 2.2.3 Petugas Bintara Pembina Desa (Babinsa) Menurut Gampong di Kecamatan Baiturrahman, 2023
Table Village Advisory Officer (Babinsa) According to Gampong in Baiturrahman District, 2023

No No	Gampong Village	Babinsa Babinsa
(1)	(2)	(3)
1	Ateuk Jawo	Serda Bambang Mardi Utama
2	Ateuk Deah Tanoh	Pelda Novi Hendri
3	Ateuk Pahlawan	Serda Marthin Irwanto P
4	Ateuk Munjeng	Serka Anwar
5	Neusu Aceh	Serka Rafendra
6	Seutui	Serda Agus Mulyono
7	Sukaramai	Serda Mirza Rusnanda
8	Neusu Jaya	Serka Rachmat Munandar
9	Peuniti	Sertu Afrizal Harka
10	Kampung Baru	Serda Rico Fandi

Sumber/Source: Komando Rayon Militer Baiturrahman/Baiturrahman Military District Command

Tabel 2.2.4 Petugas Bhayangkara Pembina Keamanan dan Ketertiban Masyarakat (Bhabinkamtibmas) Menurut Gampong di Kecamatan Baiturrahman, 2023
Bhayangkara Officer for Community Security and Order (Bhabinkamtibmas) According to Gampong in Baiturrahman District, 2023

No No	Gampong Village	Bhabinkamtibmas Bhabinkamtibmas
(1)	(2)	(3)
1	Ateuk Jawo	Bripka Alfarisi
2	Ateuk Deah Tanoh	Bripka M Rizky
3	Ateuk Pahlawan	Bripka Hendrik Al Farisi
4	Ateuk Munjeng	Aipda Taufiq
5	Neusu Aceh	Bripka Azmaryandi
6	Seutui	Bripka Zikry
7	Sukaramai	Aipda Julianto
8	Neusu Jaya	Aipda Yulian
9	Peuniti	Aipda Zulfianto A
10	Kampung Baru	Bripka Zulfikar

Sumber/Source: Kepolisian Sektor Baiturrahman/Baiturrahman Sektor Sektor Police

Tabel 2.2.5 Nama Keuchik dan Pendidikan yang Ditamatkan Menurut Gampong di Kecamatan Baiturrahman, 2023
Table *Name of Keuchik and Education Completed by Gampong in Baiturrahman Subdistrict, 2023*

No No	Gampong Village	Keuchik Keuchik	Pendidikan Education
(1)	(2)	(3)	
1	Ateuk Jawo	Yusri Abidin	SMA
2	Ateuk Deah Tanah	Muhammad Yunus	SMA
3	Ateuk Pahlawan	Azman , S.Pd.I	S1
4	Ateuk Munjeng	Yusri	SMA
5	Neusu Aceh	H. Fauzi Oesman,SH	S1
6	Seutui	Ir. T. Amiruddin	S1
7	Sukaramai	H. Dharma Sentosa	S1
8	Neusu Jaya	Ichsan, S.Tr.AK	S1
9	Peuniti	Kamaruddin Latief	SMA
10	Kampung Baru	Marwan Yusuf	SLTP

Sumber/Source: Kantor Keuchik/Village Office

Tabel 2.2.6 Jumlah Aparat Gampong di Kecamatan Baiturrahman, 2021
Table Number of Gampong Officials in Baiturrahman Subdistrict, 2021

No No	Gampong Village	Keuchik Keuchik	Sekretaris Gampong Village Secretary	Kepala Dusun Kepala Dusun	Tuha Peut Tuha Peut
(1)	(2)	(3)	(4)	(5)	(6)
1	Ateuk Jawo	1	1	4	9
2	Ateuk Deah Tanoh	1	1	3	9
3	Ateuk Pahlawan	1	1	5	9
4	Ateuk Munjeng	1	1	4	9
5	Neusu Aceh	1	1	5	9
6	Seutui	1	1	5	9
7	Sukaramai	1	1	5	9
8	Neusu Jaya	1	1	5	7
9	Peuniti	1	1	5	9
10	Kampung Baru	1	1	6	9
	2021	10	10	47	88
Kecamatan Baiturrahman	2020	10	10	47	90
	2019	10	10	47	90

Lanjutan Tabel/*Continued Table 2.2.6*

No No	Gampong Village	Sekretariat Gampong (kaur keuangan, kaur perencanaan, lainnya) Village Secretariat	Pelaksana Teknis (kasi pemerintahan, kasi kesejahteraan, lainnya) Others
(1)	(2)	(7)	(8)
1	Ateuk Jawo	3	3
2	Ateuk Deah Tanoh	3	3
3	Ateuk Pahlawan	4	3
4	Ateuk Munjeng	3	3
5	Neusu Aceh	3	5
6	Seutui	4	3
7	Sukarami	4	3
8	Neusu Jaya	3	3
9	Peuniti	3	5
10	Kampung Baru	3	4
	2021	33	35
Kecamatan Baiturrahman	2020	33	35
	2019	33	35

Sumber/Source: BPS, Pendataan Potensi Desa (Podes) 2021/BPS-Statistics Indonesia, Village Potential Data Collecting 2021

Tabel 2.2.7
Table

Keberadaan Badan Musyawarah Gampong dan Jumlah Kegiatan Musyawarah Menurut Gampong di Kecamatan Baiturrahman, 2021
Existence of Village Consultative Body and Number of Deliberation Activities by Village in Baiturrahman Subdistrict, 2021

No No	Gampong Village	Keberadaan Badan Permusyawaratan Gampong <i>The existence of the Village Consultative Body</i>	Jumlah Kegiatan Musyawarah Gampong <i>Number of Village Deliberation Activities</i>
(1)	(2)	(3)	(4)
1	Ateuk Jawo	Ada	18
2	Ateuk Deah Tanoh	Ada	8
3	Ateuk Pahlawan	Ada	15
4	Ateuk Munjeng	Ada	21
5	Neusu Aceh	Ada	23
6	Seutui	Ada	13
7	Sukaramai	Ada	34
8	Neusu Jaya	Ada	26
9	Peuniti	Ada	6
10	Kampung Baru	Ada	30
Kecamatan Baiturrahman			194

Sumber/Source: BPS, Pendataan Potensi Desa (Podes) 2021/BPS-Statistics Indonesia, Village Potential Data Collecting 2021

Tabel 2.2.8 Keberadaan Fasilitas Pemerintahan di Dalam Kecamatan Baiturrahman, 2021
Table Existence of Government Facilities in Baiturrahman Subdistrict, 2021

No No	Gampong Village	Kantor Pemerintahan Gampong Village Government Office	Balai Gampong/Lapangan Olahraga Village Hall	Tanah Kas Gampong/Ulayat Village Cash Land	Aset Gampong Lainnya Others
(1)	(2)	(3)	(4)	(5)	(6)
1	Ateuk Jawo	Ada	Ada	Ada	Ada
2	Ateuk Deah Tanoh	Ada	Ada	Ada	Ada
3	Ateuk Pahlawan	Ada	Ada	Ada	Ada
4	Ateuk Munjeng	Ada	Ada	Ada	Tidak Ada
5	Neusu Aceh	Ada	Ada	Ada	Ada
6	Seutui	Ada	Ada	Ada	Ada
7	Sukaramai	Ada	Tidak Ada	Ada	Ada
8	Neusu Jaya	Ada	Ada	Ada	Tidak ada
9	Peuniti	Ada	Ada	Ada	Ada
10	Kampung Baru	Ada	Ada	Ada	Ada

Sumber/Source: BPS, Pendataan Potensi Desa (Podes) 2021/BPS-Statistics Indonesia, Village Potential Data Collecting 2021

Tabel 2.2.9 Jumlah Badan Usaha Milik Desa (BUMDes) dan Keberadaan Pasar Desa Menurut Gampong di Kecamatan Baiturrahman, 2021
Table *Number of Village Owned Enterprises (BUMDes) and Existence Village Markets by Gampong in Baiturrahman Subdistrict, 2021*

No No	Gampong Village	BUMDes BUMDes	Pasar Desa (pasar hewan/pelelangan ikan/ hasil pertanian) Village Market
(1)	(2)	(3)	(4)
1	Ateuk Jawo	1	Tidak Ada
2	Ateuk Deah Tanah	1	Tidak Ada
3	Ateuk Pahlawan	1	Tidak Ada
4	Ateuk Munjeng	1	Tidak Ada
5	Neusu Aceh	-	Tidak Ada
6	Seutui	1	Tidak Ada
7	Sukaramai	1	Tidak Ada
8	Neusu Jaya	1	Tidak Ada
9	Peuniti	1	Tidak Ada
10	Kampung Baru	1	Tidak Ada
Kecamatan Baiturrahman		9	

Sumber/Source: BPS, Pendataan Potensi Desa (Podes) 2021/BPS-Statistics Indonesia, Village Potential Data Collecting 2021

Tabel 2.2.10 Target dan Realisasi APBG Menurut Gampong di Kecamatan Baiturrahman, 2023
APBG Targets and Realization by Gampong in Baiturrahman Subdistrict, 2023

Gampong/ Village	Target/ Target	Realisasi/ Realization	Persentase/ Percentage
(2)	(3)	(4)	(5)
Ateuk Jawo	1 723 398 146	1 475 680 762	85,63
Ateuk Deah Tanoh	1 613 987 861	1 390 528 342	86,15
Ateuk Pahlawan	1 665 291 702	1 429 545 615	85,84
Ateuk Munjeng	1 597 808 177	1 381 803 150	86,48
Neusu Aceh	2 114 571 554	1 722 081 126	81,44
Seutui	1 640 769 003	1 434 721 000	87,44
Sukaramai	1 773 378 084	1 411 828 513	79,61
Neusu Jaya	1 626 735 302	1 026 847 125	63,12
Peuniti	2 347 825 976	1 995 607 000	85,00
Kampung Baru	1 745 536 263	1 502 501 665	86,08
Total	17 849 302 068	14 771 144 298	82,75

Sumber/Source: Dinas Pemberdayaan Masyarakat dan Gampong Kota Banda Aceh/*Community and Village Empowerment Service of Banda Aceh Municipality*

BAB 3

PENDUDUK



Tabel 3.3
Table

Penduduk, Distribusi Persentase Penduduk, Kepadatan Penduduk, Rasio Jenis Kelamin Penduduk Menurut Gampong di Kecamatan Baiturrahman, 2023
Population, Percentage Distribution of Population, Population Density, and Population Sex Ratio by Villages in Baiturrahman Subdistrict, 2023

Gampong Village	Penduduk/Population		
	Laki-Laki/Male	Perempuan/Female	Jumlah/Total
(1)	(2)	(3)	(4)
Ateuk Jawo	1 617	1 549	3 166
Ateuk Deah Tanoh	542	561	1 103
Ateuk Pahlawan	2 046	2 059	4 105
Ateuk Munjeng	1 103	1 073	2 176
Neusu Aceh	1 988	1 974	3 962
Seutui	1 570	1 622	3 192
Sukaramai	1 986	2 093	4 079
Neusu Jaya	1 192	1 173	2 365
Peuniti	2 928	2 906	5 834
Kampung Baru	1 335	1 189	2 524
Kecamatan Baiturrahman	16 307	16 199	32 506

Lanjutan Tabel/Continued Table 3.1

Gampong Village	Persentase Penduduk Percentage of Total Population	Kepadatan Penduduk (per Km²) Population Density per sq.km	Rasio Jenis Kelamin Penduduk Population Sex Ratio
(1)	(5)	(6)	(7)
Ateuk Jawo	9,74 %	4 819	104
Ateuk Deah Tanah	3,39 %	6 981	97
Ateuk Pahlawan	12,63 %	8 226	99
Ateuk Munjeng	6,69 %	3 956	103
Neusu Aceh	12,19 %	8 376	101
Seutui	9,82 %	9 791	97
Sukaramai	12,55 %	8 191	95
Neusu Jaya	7,28 %	7 556	102
Peuniti	17,95 %	11 955	101
Kampung Baru	7,76 %	2 705	112
Kecamatan Baiturrahman	100,00 %	6 641	101

Sumber/Source: Dinas Kependudukan dan Pencatatan Sipil Kota Banda Aceh/ Population and Civil Registration Service of Banda Aceh Municipality

Tabel 3.2
Table

Jumlah Penduduk Menurut Kelompok Umur dan Jenis Kelamin di Kecamatan Baiturrahman, 2023
Population by Age Groups and Sex in Baiturrahman Subdistrict, 2023

Kelompok Umur <i>Age Groups</i>	Jenis Kelamin/Sex		
	Laki-Laki <i>Male</i>	Perempuan <i>Female</i>	Jumlah <i>Total</i>
(1)	(2)	(3)	(4)
0 - 4	1 378	1 237	2 615
5 - 9	1 570	1 466	3 036
10 - 14	1 547	1 374	2 921
15 - 19	1 231	1 161	2 392
20 - 24	1 377	1 229	2 606
25 - 29	1 352	1 326	2 678
30 - 34	1 311	1 434	2 745
35 - 39	1 365	1 355	2 720
40 - 44	1 212	1 220	2 432
45 - 49	1 055	1 033	2 088
50 - 54	916	976	1 892
55 - 59	757	824	1 581
60 - 64	540	585	1 125
65 - 69	350	386	736
70 - 74	180	262	442
> 75	166	331	497
Kecamatan Baiturrahman	16 307	16 199	32 506

Sumber/Source: Dinas Kependudukan dan Pencatatan Sipil Kota Banda Aceh/ *Population and Civil Registration Service of Banda Aceh Municipality*

Tabel
Table 3.3

Sebaran Penduduk dan Luas Wilayah Menurut Gampong dalam Kecamatan Baiturrahman, 2023
Distribution of Population and Area by Village in Baiturrahman Subdistrict, 2023

Gampong Village	Penduduk (persen) Population (percent)	Luas Wilayah (persen) Area (percent)
(1)	(2)	(3)
Ateuk Jawo	9,74	13,43
Ateuk Deah Tanoh	3,39	3,22
Ateuk Pahlawan	12,63	10,19
Ateuk Munjeng	6,69	11,24
Neusu Aceh	12,19	9,66
Seutui	9,82	6,67
Sukaramai	12,55	10,17
Neusu Jaya	7,28	6,39
Peuniti	17,95	9,97
Kampung Baru	7,76	19,06
Kecamatan Baiturrahman	100,00	100,00

Sumber/Source: Dinas Kependudukan dan Pencatatan Sipil Kota Banda Aceh/ *Population and Civil Registration Service of Banda Aceh Municipality*

Tabel 3.4
Table

**Jumlah KK (Kepala Keluarga) Menurut Gampong di
Kecamatan Baiturrahman, 2023**
**Number of Family by Village in Baiturrahman Subdistrict,
2023**

Gampong Village	Jumlah Total
(1)	(2)
Ateuk Jawo	921
Ateuk Deah Tanoh	329
Ateuk Pahlawan	1 221
Ateuk Munjeng	647
Neusu Aceh	1 165
Seutui	1 006
Sukaramai	1 332
Neusu Jaya	712
Peuniti	1 830
Kampung Baru	800
Kecamatan Baiturrahman	9 963

Sumber/Source: Dinas Kependudukan dan Pencatatan Sipil Kota Banda Aceh/ *Population and Civil Registration Service of Banda Aceh Municipality*

BAB 4

SOSIAL & KESEJAHTERAAN RAKYAT



4.1 PENDIDIKAN EDUCATION

Tabel 4.1.1 Banyaknya Gampong yang Memiliki Fasilitas Sekolah Menurut Tingkat Pendidikan di Kecamatan Baiturrahman, 2021
Table *Number of Villages Having Educational Facilities by Educational Level in Baiturrahman Subdistrict, 2021*

Tingkat Pendidikan <i>Educational Level</i>	2021
(1)	(2)
Sekolah Dasar (SD) <i>Primary School</i>	8
Madrasah Ibtidaiyah (MI) <i>Madrasah Ibtidaiyah</i>	2
Sekolah Menengah Pertama (SMP) <i>Junior High School</i>	4
Madrasah Tsanawiyah (MTs) <i>Madrasah Tsanawiyah (MTs)</i>	-
Sekolah Menengah Atas (SMA) <i>Senior High School</i>	5
Sekolah Menengah Kejuruan (SMK) <i>Vocational High School</i>	2
Madrasah Aliyah (MA) <i>Madrasah Aliyah</i>	-
Akademi/Perguruan Tinggi <i>Academy/University</i>	2

Sumber/Source: BPS, Pendataan Potensi Desa (Podes) 2021/BPS-Statistics Indonesia, Village Potential Data Collecting 2021

Tabel 4.1.2 Jumlah Sekolah Menurut Tingkat Pendidikan di Kecamatan Baiturrahman, 2023/2024
Table Number of Schools by Educational Level in Baiturrahman Subdistrict, 2023/2024

Tingkat Pendidikan Educational Level	Negeri/Public	Swasta/Private	Jumlah/Total
	2023/2024	2023/2024	2023/2024
(1)	(3)	(5)	(7)
Taman Kanak-Kanak (TK) ¹ <i>Kindergarten</i> ¹	1	12	13
Raudatul Athfal (RA) ^{2,3} <i>Raudatul Athfal (RA)</i> ^{2,3}	-	3	3
Sekolah Dasar (SD) ⁴ <i>Elementary Schools</i> ⁴	11	4	15
Madrasah Ibtidaiyah (MI) ² <i>Madrasah Ibtidaiyah (MI)</i> ²	2	-	2
Sekolah Menengah Pertama (SMP) ⁴ <i>Junior High Schools</i> ⁴	3	2	5
Madrasah Tsanawiyah (MTs) ² <i>Madrasah Tsanawiyah (MTs)</i> ²	-	-	-
Sekolah Menengah Atas (SMA) ⁴ <i>Senior High Schools</i> ⁴	1	4	5
Sekolah Menengah Kejuruan (SMK) ⁴ <i>Vocational High Schools</i> ⁴	-	3	3
Madrasah Aliyah (MA) ² <i>Madrasah Aliyah (MA)</i> ²	-	-	-

Catatan/Note: ³ Seluruh Raudatul Athfal (RA) berstatus swasta/All Raudatul Athfal (RA) are private

Sumber/Source: ¹ Kementerian Pendidikan, Kebudayaan, Riset, dan Teknologi; <https://dapo.kemdikbud.go.id/sp>; data semester genap per tanggal 3 September 2024 /Ministry of Education, Culture, Research, and Technology; <https://dapo.kemdikbud.go.id/sp>; even semester data as of 3 September 2024

² Kementerian Agama, EMIS, data semester genap laporan sampai dengan 30 Juni 2024/Ministry of Religious Affairs, EMIS, odd semester report data up to 30 June 2024

⁴ Kementerian Pendidikan, Kebudayaan, Riset, dan Teknologi; Sistem Data Pokok Pendidikan; data semester ganjil laporan sampai dengan 30 November 2023/Ministry of Education, Culture, Research, and Technology; Basic Education Data System; odd semester report data up to 30 November 2023

Tabel
Table 4.1.3

Jumlah Guru Menurut Tingkat Pendidikan di Kecamatan Baiturrahman, 2023/2024
Number of Teachers by Educational Level in Baiturrahman Subdistrict, 2023/2024

Tingkat Pendidikan Educational Level	Negeri/Public	Swasta/Private	Jumlah/Total
	2023/2024	2023/2024	2023/2024
(1)	(3)	(5)	(7)
Taman Kanak-Kanak (TK) ¹ <i>Kindergarten</i> ¹	7	79	86
Raudatul Athfal (RA) ^{2,3} <i>Raudatul Athfal (RA)</i> ^{2,3}	-	21	21
Sekolah Dasar (SD) ⁴ <i>Elementary Schools</i> ⁴	177	44	221
Madrasah Ibtidaiyah (MI) ² <i>Madrasah Ibtidaiyah (MI)</i> ²	111	-	111
Sekolah Menengah Pertama (SMP) ⁴ <i>Junior High Schools</i> ⁴	129	13	142
Madrasah Tsanawiyah (MTs) ² <i>Madrasah Tsanawiyah (MTs)</i> ²	-	-	-
Sekolah Menengah Atas (SMA) ⁴ <i>Senior High Schools</i> ⁴	38	43	81
Sekolah Menengah Kejuruan (SMK) ⁴ <i>Vocational High Schools</i> ⁴	-	48	48
Madrasah Aliyah (MA) ² <i>Madrasah Aliyah (MA)</i> ²	-	-	-

Catatan/Note: ³ Seluruh Raudatul Athfal (RA) berstatus swasta/All Raudatul Athfal (RA) are private

⁵ Jumlah guru termasuk kepala sekolah dan guru/The total of teachers including headmaster and teacher.

Sumber/Source: ¹ Kementerian Pendidikan, Kebudayaan, Riset, dan Teknologi; <https://dapo.kemdikbud.go.id/sp>; data semester genap per tanggal 3 September 2024 /Ministry of Education, Culture, Research, and Technology; <https://dapo.kemdikbud.go.id/sp>; even semester data as of 3 September 2024

² Kementerian Agama, EMIS, data semester genap laporan sampai dengan 30 Juni 2024/Ministry of Religious Affairs, EMIS, odd semester report data up to 30 June 2024

⁴ Kementerian Pendidikan, Kebudayaan, Riset, dan Teknologi; Sistem Data Pokok Pendidikan; data semester ganjil laporan sampai dengan 30 November 2023/Ministry of Education, Culture, Research, and Technology; Basic Education Data System; odd semester report data up to 30 November 2023

Tabel 4.1.4 Jumlah Murid Menurut Tingkat Pendidikan di Kecamatan Baiturrahman, 2023/2024
Table Number of Pupils by Educational Level in Baiturrahman Subdistrict, 2023/2024

Tingkat Pendidikan Educational Level	Negeri/Public	Swasta/Private	Jumlah/Total
	2023/2024	2023/2024	2023/2024
(1)	(3)	(5)	(7)
Taman Kanak-Kanak (TK) ¹ Kindergarten ¹	83	1 003	1 086
Raudatul Athfal (RA) ^{2,3} Raudatul Athfal (RA) ^{2,3}	-	120	120
Sekolah Dasar (SD) ⁴ Elementary Schools ⁴	3 079	387	3 466
Madrasah Ibtidaiyah (MI) ² Madrasah Ibtidaiyah (MI) ²	1 590	-	1 590
Sekolah Menengah Pertama (SMP) ⁴ Junior High Schools ⁴	2 069	127	2 196
Madrasah Tsanawiyah (MTs) ² Madrasah Tsanawiyah (MTs) ²	-	-	-
Sekolah Menengah Atas (SMA) ⁴ Senior High Schools ⁴	558	207	765
Sekolah Menengah Kejuruan (SMK) ⁴ Vocational High Schools ⁴	-	904	904
Madrasah Aliyah (MA) ² Madrasah Aliyah (MA) ²	-	-	-

Catatan/Note: ³ Seluruh Raudatul Athfal (RA) berstatus swasta/All Raudatul Athfal (RA) are private

Sumber/Source: ¹ Kementerian Pendidikan, Kebudayaan, Riset, dan Teknologi; <https://dapo.kemdikbud.go.id/sp>; data semester genap per tanggal 3 September 2024 /Ministry of Education, Culture, Research, and Technology; <https://dapo.kemdikbud.go.id/sp>; even semester data as of 3 September 2024

² Kementerian Agama, EMIS, data semester genap laporan sampai dengan 30 Juni 2024/Ministry of Religious Affairs, EMIS, odd semester report data up to 30 June 2024

⁴ Kementerian Pendidikan, Kebudayaan, Riset, dan Teknologi; Sistem Data Pokok Pendidikan; data semester ganjil laporan sampai dengan 30 November 2023/Ministry of Education, Culture, Research, and Technology; Basic Education Data System; odd semester report data up to 30 November 2023

Tabel 4.1.5
Table

Banyaknya Sekolah Dasar (SD) Menurut Gampong di Kecamatan Baiturrahman, 2021/2022
Number of Elementary Schools (SD) by Villages in Baiturrahman Subdistrict, 2020/2021

Gampong Village	Negeri Public	Swasta Private	Jumlah Total
(1)	(2)	(3)	(4)
Ateuk Jawo	1	-	1
Ateuk Deah Tanoh	-	-	-
Ateuk Pahlawan	2	-	2
Ateuk Munjeng	-	-	-
Neusu Aceh	1	-	1
Seutui	1	-	1
Sukaramai	1	2	3
Neusu Jaya	2	1	3
Peuniti	3	-	3
Kampung Baru	-	1	1
Kecamatan Baiturrahman	11	4	15

Sumber/Source: BPS, Pendataan Potensi Desa (Podes) 2021/BPS-Statistics Indonesia, Village Potential Data Collecting 2021

Tabel 4.1.6 Banyaknya Madrasah Ibtidaiyah (MI) Menurut Gampong di Kecamatan Baiturrahman, 2021/2022
Table **Number of Madrasah Ibtidaiyah (MI) by Villages in Baiturrahman Subdistrict, 2021/2022**

Gampong Village	Negeri Public	Swasta Private	Jumlah Total
(1)	(2)	(3)	(4)
Ateuk Jawo	-	-	-
Ateuk Deah Tanah	-	-	-
Ateuk Pahlawan	1	-	1
Ateuk Munjeng	-	-	-
Neusu Aceh	-	-	-
Seutui	1	-	1
Sukaramai	-	-	-
Neusu Jaya	-	-	-
Peuniti	-	-	-
Kampung Baru	-	-	-
Kecamatan Baiturrahman	2	-	2

Sumber/Source: BPS, Pendataan Potensi Desa (Podes) 2021/BPS-Statistics Indonesia, Village Potential Data Collecting 2021

Tabel 4.1.7
Table

Banyaknya Sekolah Menengah Pertama (SMP) Menurut Gampong di Kecamatan Baiturrahman, 2021/2022
Number of Junior High School (SMP) by Villages in Baiturrahman Subdistrict, 2021/2022

Gampong Village	Negeri Public	Swasta Private	Jumlah Total
(1)	(2)	(3)	(4)
Ateuk Jawo	-	-	-
Ateuk Deah Tanoh	-	-	-
Ateuk Pahlawan	1	1	2
Ateuk Munjeng	-	-	-
Neusu Aceh	-	-	-
Seutui	-	-	-
Sukaramai	1	1	2
Neusu Jaya	1	-	1
Peuniti	1	2	3
Kampung Baru	-	-	-
Kecamatan Baiturrahman	4	4	8

Sumber/Source: BPS, Pendataan Potensi Desa (Podes) 2021/BPS-Statistics Indonesia, Village Potential Data Collecting 2021

Tabel 4.1.8
Table

Banyaknya Madrasah Tsanawiyah (MTs) Menurut Gampong di Kecamatan Baiturrahman, 2021/2022
Number of Madrasah Tsanawiyah (MTs) by Villages in Baiturrahman Subdistrict, 2021/2022

Gampong Village	Negeri Public	Swasta Private	Jumlah Total
(1)	(2)	(3)	(4)
Ateuk Jawo	-	-	-
Ateuk Deah Tanah	-	-	-
Ateuk Pahlawan	-	-	-
Ateuk Munjeng	-	-	-
Neusu Aceh	-	-	-
Seutui	-	-	-
Sukaramai	-	-	-
Neusu Jaya	-	-	-
Peuniti	-	-	-
Kampung Baru	-	-	-
Kecamatan Baiturrahman	-	-	-

Sumber/Source: BPS, Pendataan Potensi Desa (Podes) 2021/BPS-Statistics Indonesia, Village Potential Data Collecting 2021

Tabel 4.1.9
Table

Banyaknya Sekolah Menengah Atas (SMA) Menurut Gampong di Kecamatan Baiturrahman, 2021/2022
Number of Senior High School (SMA) by Villages in Baiturrahman Subdistrict, 2021/2022

Gampong Village	Negeri Public	Swasta Private	Jumlah Total
(1)	(2)	(3)	(4)
Ateuk Jawo	1	-	1
Ateuk Deah Tanoh	-	-	-
Ateuk Pahlawan	1	1	2
Ateuk Munjeng	-	-	-
Neusu Aceh	-	-	-
Seutui	-	1	1
Sukaramai	-	1	1
Neusu Jaya	-	-	-
Peuniti	-	1	1
Kampung Baru	-	-	-
Kecamatan Baiturrahman	2	4	6

Sumber/Source: BPS, Pendataan Potensi Desa (Podes) 2021/BPS-Statistics Indonesia, Village Potential Data Collecting 2021

Tabel 4.1.10 Banyaknya Madrasah Aliyah (MA) Menurut Gampong di Kecamatan Baiturrahman, 2021/2022
Table **Number of Madrasah Aliyah (MA) by Villages in Baiturrahman Subdistrict, 2021/2022**

Gampong Village	Negeri Public	Swasta Private	Jumlah Total
(1)	(2)	(3)	(4)
Ateuk Jawo	-	-	-
Ateuk Deah Tanoh	-	-	-
Ateuk Pahlawan	-	-	-
Ateuk Munjeng	-	-	-
Neusu Aceh	-	-	-
Seutui	-	-	-
Sukaramai	-	-	-
Neusu Jaya	-	-	-
Peuniti	-	-	-
Kampung Baru	-	-	-
Kecamatan Baiturrahman	-	-	-

Sumber/Source: BPS, Pendataan Potensi Desa (Podes) 2021/BPS-Statistics Indonesia, Village Potential Data Collecting 2021

Tabel 4.1.11
Table

Banyaknya Sekolah Menengah Kejuruan (SMK) Menurut Gampong di Kecamatan Baiturrahman, 2021/2022
Number of Vocational High Schools (SMK) by Villages in Baiturrahman Subdistrict, 2021/2022

Gampong Village	Negeri Public	Swasta Private	Jumlah Total
(1)	(2)	(3)	(4)
Ateuk Jawo	-	-	-
Ateuk Deah Tanah	-	-	-
Ateuk Pahlawan	-	1	1
Ateuk Munjeng	-	-	-
Neusu Aceh	-	-	-
Seutui	-	1	1
Sukaramai	-	-	-
Neusu Jaya	-	-	-
Peuniti	-	-	-
Kampung Baru	-	-	-
Kecamatan Baiturrahman	-	2	2

Sumber/Source: BPS, Pendataan Potensi Desa (Podes) 2021/BPS-Statistics Indonesia, Village Potential Data Collecting 2021

Tabel 4.1.12 Banyaknya Akademi/Perguruan Tinggi Menurut Gampong di Kecamatan Baiturrahman, 2021/2022
Table *Number of Academy/College by Villages in Baiturrahman Subdistrict, 2021/2022*

Gampong Village	Negeri Public	Swasta Private	Jumlah Total
(1)	(2)		
Ateuk Jawo	-	-	-
Ateuk Deah Tanoh	-	-	-
Ateuk Pahlawan	-	-	-
Ateuk Munjeng	-	-	-
Neusu Aceh	-	1	1
Seutui	-	-	-
Sukaramai	-	-	-
Neusu Jaya	-	-	-
Peuniti	-	2	2
Kampung Baru	-	-	-
Kecamatan Baiturrahman	-	3	3

Sumber/Source: BPS, Pendataan Potensi Desa (Podes) 2021/BPS-Statistics Indonesia, Village Potential Data Collecting 2021

4.2 KESEHATAN HEALTH

Tabel 4.2.1 Banyaknya Gampong yang Memiliki Sarana Kesehatan Menurut Jenis Sarana Kesehatan di Kecamatan Baiturrahman, 2021
Number of Villages Health Facilities by Type of Health Facilities in Baiturrahman Subdistrict, 2021

Jenis Sarana Kesehatan <i>Type of Health Facilities</i>	2021
(1)	(2)
Rumah Sakit <i>Hospital</i>	3
Rumah Sakit Bersalin <i>Maternity Hospital</i>	-
Poliklinik/Balai Pengobatan <i>Polyclinic</i>	4
Puskesmas Rawat Inap <i>Public Health Center with Inpatient Care</i>	-
Puskesmas Tanpa Rawat Inap <i>Public Health Center without Inpatient Care</i>	1
Apotek <i>Pharmacy</i>	16

Sumber/Source: BPS, Pendataan Potensi Desa (Podes) 2021/BPS-Statistics Indonesia, Village Potential Data Collecting 2021

Tabel
Table 4.2.2

Banyaknya Warga Penderita Kekurangan Gizi Menurut Gampong di Kecamatan Baiturrahman, 2020
Number of People with Malnutrition by Villages/Kelurahan in Baiturrahman Subdistrict, 2020

Gampong Village	2020
(1)	(2)
Ateuk Jawo	-
Ateuk Deah Tanoh	-
Ateuk Pahlawan	2
Ateuk Munjeng	-
Neusu Aceh	-
Seutui	-
Sukaramai	1
Neusu Jaya	-
Peuniti	-
Kampung Baru	-
Kecamatan Baiturrahman	3

Sumber/Source: BPS, Pendataan Potensi Desa (Podes) 2021/BPS-Statistics Indonesia, Village Potential Data Collecting 2021

4.3 PERUMAHAN DAN LINGKUNGAN HOUSING AND ENVIRONMENT

Tabel 4.3.1 Banyaknya Gampong Menurut Sumber Air Minum Sebagian Besar Keluarga di Kecamatan Baiturrahman, 2021
Number of Villages by Drinking Water Source of Majority Family in Baiturrahman Subdistrict, 2021

Sumber Air Minum <i>Source of Drinking Water</i>	2021
(1)	(2)
Air Kemasan Bermerk/ <i>Branded Bottled Water</i>	-
Air Isi Ulang/ <i>Refil Water</i>	10
Leding Dengan Meteran/ <i>Metered Piped Water</i>	-
Leding Tanpa Meteran/ <i>Non Metered Piped Water</i>	-
Sumur Bor atau Pompa/ <i>Artesian Well or Pumped Water</i>	-
Sumur/ <i>Well</i>	-
Mata Air/ <i>Spring</i>	-
Sungai/Danau/Kolam/ Waduk/Situ/ Embung/Bendungan/ <i>River/Lake/Pond/ Reservoir/Dam</i>	-
Air Hujan/ <i>Rainwater</i>	-
Lainnya/ <i>Others</i>	-

Sumber/Source: BPS, Pendataan Potensi Desa (Podes) 2021/BPS-Statistics Indonesia, *Village Potential Data Collecting 2021*

Tabel 4.3.2 Banyaknya Keluarga Menurut Gampong dan Jenis Pengguna Listrik di Kecamatan Baiturrahman, 2021
Table **Number of Family by Villages and Type of Electricity Consumer in Baiturrahman Subdistrict, 2021**

Gampong <i>Village</i>	Pengguna Listrik <i>Electricity Consumer</i>			Bukan Pengguna Listrik <i>Not Electricity Consumer</i>
	PLN <i>State Electricity Company</i>	Non PLN <i>Non-State Electricity Company</i>	Jumlah <i>Total</i>	
(1)	(2)	(3)	(4)	(5)
Ateuk Jawo	809	-	809	-
Ateuk Deah Tanoh	313	-	313	-
Ateuk Pahlawan	1 198	-	1 198	-
Ateuk Munjeng	583	-	583	-
Neusu Aceh	1 050	-	1 050	-
Seutui	1 030	-	1 030	-
Sukaramai	880	-	880	-
Neusu Jaya	928	-	928	-
Peuniti	1 840	-	1 840	-
Kampung Baru	671	-	671	-
Kecamatan Baiturrahman	9 302	-	9 302	-

Sumber/Source: BPS, Pendataan Potensi Desa (Podes) 2021/BPS-Statistics Indonesia, Village Potential Data Collecting 2021

Tabel
Table 4.3.3

Banyaknya Gampong Menurut Sumber Penerangan Jalan Utama Gampong di Kecamatan Baiturrahman, 2021
Number of Villages by Source of Villages/Kelurahan's Main Street Illumination in Baiturrahman Subdistrict, 2021

Sumber Penerangan Jalan Utama <i>Source of Main Street Illumination</i>	2021
(1)	(2)
Listrik Pemerintah/ <i>State Electricity</i>	10
Listrik Non Pemerintah/ <i>Non-State Electricity</i>	-
Non Listrik/ <i>Non-Electric</i>	-

Sumber/Source: BPS, Pendataan Potensi Desa (Podes) 2021/BPS-Statistics Indonesia, Village Potential Data Collecting 2021

Tabel
Table 4.3.4

**Banyaknya Gampong Menurut Penggunaan Fasilitas
Tempat Buang Air Besar Sebagian Besar Keluarga di
Kecamatan Baiturrahman, 2021**
*Number of Villages by Toilet Facility Used by Majority
Family in Baiturrahman Subdistrict, 2021*

Fasilitas Tempat Buang Air Besar <i>Toilet Facility</i>		2021
(1)	(2)	
Jamban/Toilet		
Sendiri/ <i>Private</i>	10	
Bersama/ <i>Shared</i>	-	
Umum/ <i>Public</i>	-	
Bukan Jamban/<i>Non-Toilet</i>		-
Jumlah/Total		10

Sumber/Source: BPS, Pendataan Potensi Desa (Podes) 2021/BPS-Statistics Indonesia, Village Potential Data Collecting 2021

Tabel
Table 4.3.5

Banyaknya Gampong Menurut Jenis Bahan Bakar untuk Memasak yang Digunakan Sebagian Besar Keluarga di Kecamatan Baiturrahman, 2021
Number of Villages by Type of Cooking Fuel Used by Majority Family in Baiturrahman Subdistrict, 2021

Jenis Bahan Bakar untuk Memasak <i>Type of Cooking Fuel</i>	2021
(1)	(2)
Listrik/ <i>Electric</i>	-
Elpiji 5,5 kg/ <i>Blue Gas 5.5 kg-LPG</i>	-
Elpiji 12 kg/ <i>12 kg-LPG</i>	1
Elpiji 3 kg/ <i>3 kg-LPG</i>	9
Gas Kota/ <i>City Gas</i>	-
Biogas/ <i>Biogas</i>	-
Minyak Tanah/ <i>Kerosene</i>	-
Briket/ <i>Briquettes</i>	-
Arang/ <i>Charcoal</i>	-
Kayu Bakar/ <i>Firewood</i>	-
Lainnya/ <i>Others</i>	-
Jumlah/<i>Total</i>	10

Sumber/*Source*: BPS, Pendataan Potensi Desa (Podes) 2021/*BPS-Statistics Indonesia, Village Potential Data Collecting 2021*

4.4 AGAMA DAN SOSIAL LAINNYA RELIGION AND OTHER SOCIAL AFFAIRS

Tabel 4.4.1 Jumlah Tempat Peribadatan Menurut Gampong di Kecamatan Baiturrahman, 2021
Table Number of Worship Places by Villages in Baiturrahman Subdistrict, 2021

Gampong Village	Masjid Mosque	Mushola Pray Room	Gereja Protestan Protestant Church	Gereja Katholik Catholic Church	Pura Temple	Vihara
(1)	(2)	(3)	(4)	(5)	(6)	(7)
Ateuk Jawo	1	1	-	-	-	-
Ateuk Deah Tanoh	-	1	-	-	-	-
Ateuk Pahlawan	4	1	-	-	-	-
Ateuk Munjeng	-	1	-	-	-	-
Neusu Aceh	1	2	-	-	-	-
Seutui	1	3	-	-	-	-
Sukaramai	3	1	-	-	-	-
Neusu Jaya	2	1	-	-	-	-
Peuniti	3	6	-	-	-	-
Kampung Baru	1	4	-	-	-	-
Kecamatan Baiturrahman	16	21	-	-	-	-

Sumber/Source: BPS, Pendataan Potensi Desa (Podes) 2021/BPS-Statistics Indonesia, Village Potential Data Collecting 2021

Tabel 4.4.2
Table

Banyaknya Kejadian Bencana Alam Menurut Gampong dan Jenis Bencana Alam di Kecamatan Baiturrahman, 2020
Number of Natural Disaster Events by Villages and Type of Natural Disaster in Baiturrahman Subdistrict, 2020

Gampong Village	Gempa Bumi Earthquake	Tsunami Tsunami	Gunung Meletus Volcanic Eruption	Tanah Longsor Landslide
(1)	(2)	(3)	(4)	(5)
Ateuk Jawo	-	-	-	-
Ateuk Deah Tanoh	-	-	-	-
Ateuk Pahlawan	-	-	-	-
Ateuk Munjeng	-	-	-	-
Neusu Aceh	-	-	-	-
Seutui	-	-	-	-
Sukaramai	-	-	-	-
Neusu Jaya	-	-	-	-
Peuniti	-	-	-	-
Kampung Baru	-	-	-	-
Kecamatan Baiturrahman	-	-	-	-

Lanjutan Tabel/Continued Table 4.4.2

Gampong Village	Banjir Floods	Banjir Bandang Flash Floods	Kekeringan Drought	Kebakaran Hutan dan Lahan Forest and Land Fires
(1)	(6)	(7)	(8)	(9)
Ateuk Jawo	-	-	-	-
Ateuk Deah Tanah	-	-	-	-
Ateuk Pahlawan	1	-	-	-
Ateuk Munjeng	-	-	-	-
Neusu Aceh	1	-	-	-
Seutui	-	-	-	-
Sukaramai	-	-	-	-
Neusu Jaya	1	-	-	-
Peuniti	-	-	-	-
Kampung Baru	1	-	-	-
Kecamatan Baiturrahman	4	-	-	-

Lanjutan Tabel/*Continued Table* 4.4.2

Gampong Village	Angin Puyuh/ Puting Beliung/ Topan Tornado/Typhoon	Gelombang Pasang Tidal Wave	Abrasi Abrasion
(1)	(10)	(11)	(12)
Ateuk Jawo	-	-	-
Ateuk Deah Tanah	-	-	-
Ateuk Pahlawan	-	-	-
Ateuk Munjeng	-	-	-
Neusu Aceh	-	-	-
Seutui	-	-	-
Sukaramai	-	-	-
Neusu Jaya	-	-	-
Peuniti	-	-	-
Kampung Baru	-	-	-
Kecamatan Baiturrahman	-	-	-

Sumber/Source: BPS, Pendataan Potensi Desa (Podes) 2021/BPS-Statistics Indonesia, Village Potential Data Collecting 2021

Tabel 4.4.3
Table

Banyaknya Korban Jiwa Akibat Bencana Alam Menurut Gampong dan Jenis Bencana Alam di Kecamatan Baiturrahman, 2020
Number of Fatalities Due to Natural Disasters by Villages and Type of Natural Disaster in Meraxa Subdistrict, 2020

Gampong Village	Gempa Bumi Earthquake	Tsunami Tsunami	Gunung Meletus Volcanic Eruption	Tanah Longsor Landslide
(1)	(2)	(3)	(4)	(5)
Ateuk Jawo	-	-	-	-
Ateuk Deah Tanoh	-	-	-	-
Ateuk Pahlawan	-	-	-	-
Ateuk Munjeng	-	-	-	-
Neusu Aceh	-	-	-	-
Seutui	-	-	-	-
Sukaramai	-	-	-	-
Neusu Jaya	-	-	-	-
Peuniti	-	-	-	-
Kampung Baru	-	-	-	-
Kecamatan Baiturrahman	-	-	-	-

Lanjutan Tabel/*Continued Table 4.4.3*

Gampong Village	Banjir Floods	Banjir Bandang Flash Floods	Kekeringan Drought	Kebakaran Hutan dan Lahan Forest and Land Fires
(1)	(6)	(7)	(8)	(9)
Ateuk Jawo	-	-	-	-
Ateuk Deah Tanoh	-	-	-	-
Ateuk Pahlawan	-	-	-	-
Ateuk Munjeng	-	-	-	-
Neusu Aceh	-	-	-	-
Seutui	-	-	-	-
Sukaramai	-	-	-	-
Neusu Jaya	-	-	-	-
Peuniti	-	-	-	-
Kampung Baru	-	-	-	-
Kecamatan Baiturrahman	-	-	-	-

Lanjutan Tabel/*Continued Table 4.4.3*

Gampong Village	Angin Puyuh/ Puting Beliung/ Topan Tornado/Typhoon	Gelombang Pasang/ Tidal Wave	Abrasi/ Abrasion
(1)	(10)	(11)	(12)
Ateuk Jawo	-	-	-
Ateuk Deah Tanoh	-	-	-
Ateuk Pahlawan	-	-	-
Ateuk Munjeng	-	-	-
Neusu Aceh	-	-	-
Seutui	-	-	-
Sukaramai	-	-	-
Neusu Jaya	-	-	-
Peuniti	-	-	-
Kampung Baru	-	-	-
Kecamatan Baiturrahman	-	-	-

Sumber/*Source*: BPS, Pendataan Potensi Desa (Podes) 2021/*BPS-Statistics Indonesia, Village Potential Data Collecting 2021*

Tabel 4.4.4
Table

Keberadaan Fasilitas/Upaya Antisipasi/Mitigasi Bencana Alam Menurut Gampong di Kecamatan Baiturrahman, 2021
Existence of Facilities/Efforts for Anticipation/Mitigation of Natural Disasters by Villages by Villages in Baiturrahman Subdistrict, 2021

Gampong Village	Sistem Peringatan Dini Bencana Alam <i>Natural Disaster Early Warning System</i>	Sistem Peringatan Dini Khusus Tsunami <i>Tsunami Early Warning System</i>	Perlengkapan Keselamatan <i>Safety Equipment</i>
(1)	(2)	(3)	(4)
Ateuk Jawo	Tidak Ada	Tidak Ada	Tidak Ada
Ateuk Deah Tanoh	Tidak Ada	Tidak Ada	Tidak Ada
Ateuk Pahlawan	Tidak Ada	Tidak Ada	Tidak Ada
Ateuk Munjeng	Tidak Ada	Tidak Ada	Tidak Ada
Neusu Aceh	Tidak Ada	Tidak Ada	Tidak Ada
Seutui	Tidak Ada	Tidak Ada	Tidak Ada
Sukaramai	Ada	Ada	Tidak Ada
Neusu Jaya	Tidak Ada	Tidak Ada	Tidak Ada
Peuniti	Ada	Ada	Tidak Ada
Kampung Baru	Ada	Ada	Ada

Lanjutan Tabel/*Continued Table 4.4.4*

Gampong Village	Rambu-Rambu dan Jalur Evakuasi Bencana <i>Sign and Evacuation Route</i>	Pembuatan, Perawatan, atau Normalisasi: Sungai, Kanal, Tanggul, Parit, Drainase, Waduk, Pantai, dll <i>Manufacture, Maintenance, or Normalization: Rivers, Canals, Embankment, etc</i>
(1)	(5)	(6)
Ateuk Jawo	Tidak Ada	Ada
Ateuk Deah Tanoh	Tidak Ada	Ada
Ateuk Pahlawan	Tidak Ada	Ada
Ateuk Munjeng	Tidak Ada	Tidak Ada
Neusu Aceh	Tidak Ada	Ada
Seutui	Tidak Ada	Ada
Sukaramai	Ada	Ada
Neusu Jaya	Tidak Ada	Tidak Ada
Peuniti	Tidak Ada	Ada
Kampung Baru	Tidak Ada	Ada

Sumber/*Source*: BPS, Pendataan Potensi Desa (Podes) 2021/*BPS-Statistics Indonesia, Village Potential Data Collecting 2021*

Tabel 4.4.5
Table

Banyaknya Gampong yang Memiliki Kelompok Kegiatan Olahraga Menurut Jenis Olahraga dan Ketersediaan Fasilitas/Lapangan Olahraga di Kecamatan Baiturrahman, 2021

Number of Villages Having Sport Activities Groups by Type of Sport and Availability of Sport Facilities/Fields in Baiturrahman Subdistrict, 2021

Jenis Olahraga <i>Type of Sport</i>	Kondisi Fasilitas/Lapangan Olahraga <i>Condition of Sport Facilities/Fields</i>			Tidak Ada Fasilitas/ Lapangan Olahraga <i>No Sport Facilities/ Fields</i>
	Baik	Rusak Sedang	Rusak Parah	
(1)	(2)	(3)	(4)	(5)
Sepak Bola/ <i>Soccer</i>	3	-	-	7
Bola Voli/ <i>Volley Ball</i>	5	1	-	4
Bulu Tangkis/ <i>Badminton</i>	4	-	-	6
Bola Basket/ <i>Basket Ball</i>	2	-	-	8
Tenis Lapangan/ <i>Court Tennis</i>	2	-	-	8
Tenis Meja/ <i>Table Tennis</i>	6	-	-	4
Futsal/ <i>Futsal</i>	3	-	-	7
Renang/ <i>Swimming</i>	-	-	-	-
Bela Diri/ <i>Martial Arts</i>	4	-	-	6
Bilyard/ <i>Billiards</i>	-	-	-	10
Fitnes, Aerobik, dll/ <i>Fitness, Aerobics, etc</i>	3	-	-	7
Lainnya/ <i>Others</i>	3	-	-	7

Sumber/Source: BPS, Pendataan Potensi Desa (Podes) 2021/BPS-Statistics Indonesia, Village Potential Data Collecting 2021

Tabel 4.4.6 Jumlah Kejahatan Menurut Gampong di Kecamatan Baiturrahman, 2023
Table Number of Crimes by Villages in Baiturrahman Subdistrict, 2023

Gampong Village	Pembunuhan Murder	Penganiayaan Persecution	KDRT Domestic Violence	Perkosaan Rape
(1)	(2)	(3)	(4)	(5)
Ateuk Jawo	-	2	-	-
Ateuk Deah Tanoh	-	-	-	-
Ateuk Pahlawan	-	-	-	-
Ateuk Munjeng	-	-	-	-
Neusu Aceh	-	-	-	-
Seutui	-	-	-	-
Sukaramai	-	1	-	-
Neusu Jaya	-	-	-	-
Peuniti	-	1	3	-
Kampung Baru	-	1	-	-
Kecamatan Baiturrahman	-	5	-	-

Lanjutan Tabel/*Continued Table 4.4.6*

Gampong Village	Pencurian Biasa Ordinary Theft	Pencurian Kendaraan Bermotor Motorbike Theft	Narkotika dan Psikotropika Narcotics and Psychotropics	Penggelapan Embezzlement
(1)	(6)	(7)	(8)	(9)
Ateuk Jawo	1	-	-	-
Ateuk Deah Tanoh	-	-	-	-
Ateuk Pahlawan	2	3	-	-
Ateuk Munjeng	1	1	-	-
Neusu Aceh	-	-	-	-
Seutui	-	-	-	-
Sukaramai	1	-	-	-
Neusu Jaya	1	-	-	-
Peuniti	-	-	-	-
Kampung Baru	2	-	-	-
Kecamatan Baiturrahman	8	4	-	-

Sumber/*Source*: Kepolisian Sektor Baiturrahman/*Baiturrahman Sector Police*

Tabel 4.4.7 Jumlah Nikah, Cerai Gugat, dan Cerai Talak Menurut Gampong di Kecamatan Baiturrahman, 2023
Table Number of Marriages, Divorce by Talak, and Divorce by Petition by Villages in Baiturrahman Subdistrict, 2023

Gampong Village	Nikah ¹ Marriages	Cerai Gugat ² Divorce by Petition	Cerai Talak ³ Divorce by Talak
(1)	(2)	(3)	(4)
Ateuk Jawo	7	6	-
Ateuk Deah Tanoh	3	-	-
Ateuk Pahlawan	12	5	-
Ateuk Munjeng	6	4	2
Neusu Aceh	9	4	1
Seutui	9	8	2
Sukaramai	14	6	1
Neusu Jaya	283	3	1
Peuniti	19	6	3
Kampung Baru	6	-	3
Kecamatan Baiturrahman	368	42	13

Sumber/Source: ¹Kantor Urusan Agama (KUA) Kecamatan Baiturrahman/Baiturrahman Subdistrict Religious Affairs Office

^{2,3}Mahkamah Syar'iyah Kelas I-A Kota Banda Aceh/Shariah Court Class I-A Banda Aceh Municipality

Tabel
Table 4.4.8

Jumlah Dayah, Balai Pengajian, TPA, dan Majelis Ta'lim Menurut Gampong di Kecamatan Baiturrahman, 2023
Number of Dayah, Islamic Recitation, Al-Qur'an Recitation House, and Majelis Ta'lim Villages in Baiturrahman Subdistrict, 2023

Gampong Village	Dayah Dayah	Balai Pengajian Islamic Recitation	TPA Al-Qur'an Recitation House	Majelis Ta'lim Majelis Ta'lim
(1)	(2)	(3)	(4)	(5)
Ateuk Jawo	1	2	1	-
Ateuk Deah Tanoh	-	-	3	-
Ateuk Pahlawan	-	3	3	-
Ateuk Munjeng	-	3	-	1
Neusu Aceh	-	3	3	2
Seutui	-	1	-	1
Sukaramai	-	3	2	-
Neusu Jaya	-	1	3	-
Peuniti	-	3	6	2
Kampung Baru	-	-	5	-
Kecamatan Baiturrahman	1	19	26	6

Sumber/Source: Dinas Pendidikan Dayah Kota Banda Aceh/Dayah Education Office of Banda Aceh Municipality

BAB 5

PERTANIAN



Tabel
Table 5.1

Luas Panen Tanaman Sayuran dan Buah-buahan Semusim Menurut Jenis Tanaman di Kecamatan Baiturrahman (ha), 2020–2023
Harvested Area of Seasonal Vegetables and Fruits by Kind of Plant in Baiturrahman Subdistrict (ha), 2020–2023

Jenis Tanaman <i>Kind of Plants</i>	2020	2021	2022	2023
(1)	(2)	(3)	(4)	(5)
Sayuran/<i>Vegetables</i>	-	-	-	-
Bawang Merah/ <i>Shallots</i>	-	-	-	-
Bawang Putih/ <i>Garlic</i>	-	-	-	-
Cabai Besar/ <i>Chili/Big Chili</i>	-	-	-	-
Petsai/Sawi/ <i>Chinese Cabbage/ Mustard Green</i>	-	-	-	-
Kentang/ <i>Potato</i>	-	-	-	-
Kangkung/ <i>Water Spinach</i>	-	-	-	-
Bayam/ <i>Spinach</i>	-	-	-	-
Jamur/ <i>Mushroom</i>	-	-	-	-

Sumber/Source: BPS, Statistik Pertanian Hortikultura SPH-SBS/BPS-Statistics Indonesia, *Agricultural Statistic for Horticulture SPH-SBS*

Tabel 5.2
Table

Produksi Tanaman Sayuran dan Buah-buahan Semusim Menurut Jenis Tanaman di Kecamatan Baiturrahman (kuintal), 2020–2023
Production of Seasonal Vegetables and Fruits by Kind of Plant in Baiturrahman Subdistrict (quintal), 2020–2023

Jenis Tanaman <i>Kind of Plants</i>	2020	2021	2022	2023
(1)	(2)	(3)	(4)	(5)
Sayuran/<i>Vegetables</i>	-	-	-	-
Bawang Merah/ <i>Shallots</i>	-	-	-	-
Bawang Putih/ <i>Garlic</i>	-	-	-	-
Cabai Besar/ <i>Chili/Big Chili</i>	-	-	-	-
Petsai/Sawi/ <i>Chinese Cabbage/ Mustard Green</i>	-	-	-	-
Kentang/ <i>Potato</i>	-	-	-	-
Kangkung/ <i>Water Spinach</i>	-	-	-	-
Bayam/ <i>Spinach</i>	-	-	-	-
Jamur/ <i>Mushroom</i>	-	-	-	-

Sumber/Source: BPS, Statistik Pertanian Hortikultura SPH-SBS/BPS-Statistics Indonesia, *Agricultural Statistic for Horticulture SPH-SBS*

Tabel
Table 5.3

**Luas Panen Tanaman Biofarmaka Menurut Jenis Tanaman
di Kecamatan Baiturrahman (m²), 2020–2023**
**Harvested Area of Medicinal Plants by Kind of Plant in
Baiturrahman Subdistrict (m²), 2020–2023**

Jenis Tanaman <i>Kind of Plants</i>	2020	2021	2022	2023
(1)	(2)	(3)	(4)	(5)
<i>Jahe/Ginger</i>	-	-	-	-
<i>Kencur/East Indian Galangal</i>	-	-	-	-
<i>Kunyit/Turmeric</i>	-	-	-	-
<i>Laos/Lengkuas/Galangal</i>	-	-	-	-
<i>Kapulaga/Java Cardamom</i>	-	-	-	-
<i>Temulawak/Java Turmeric</i>	-	-	-	-

Sumber/Source: BPS, Statistik Pertanian Hortikultura SPH-TBF/BPS-Statistics Indonesia, *Agricultural Statistic for Horticulture SPH-TBF*

Tabel 5.4 **Produksi Tanaman Biofarmaka Menurut Jenis Tanaman di Kecamatan Baiturrahman (kg), 2020–2023**
Table **Production of Medicinal Plants by Kind of Plant in Baiturrahman Subdistrict (kg), 2020–2023**

Jenis Tanaman Kind of Plants	2020	2021	2022	2023
(1)	(2)	(3)	(4)	(5)
Jahe/ <i>Ginger</i>	-	-	-	-
Kencur/ <i>East Indian Galangal</i>	-	-	-	-
Kunyit/ <i>Turmeric</i>	-	-	-	-
Laos/Lengkuas/ <i>Galanga</i>	-	-	-	-
Kapulaga/ <i>Java Cardamom</i>	-	-	-	-
Temulawak/ <i>Java Turmeric</i>	-	-	-	-

Sumber/Source: BPS, Statistik Pertanian Hortikultura SPH-TBF/BPS-Statistics Indonesia, *Agricultural Statistic for Horticulture SPH-TBF*

Tabel
5.5
Table

**Luas Panen Tanaman Hias Menurut Jenis Tanaman di
Kecamatan Baiturrahman (m²), 2020–2023**
*Harvested Area of Ornamental Plants by Kind of Plant in
Baiturrahman Subdistrict (m²), 2020–2023*

Jenis Tanaman <i>Kind of Plants</i>	2020	2021	2022	2023
(1)	(2)	(3)	(4)	(5)
Anggrek/ <i>Orchid</i>	-	-	-	-
Krisan/ <i>Chrysantemum</i>	-	-	-	-
Mawar/ <i>Rose</i>	-	-	-	-
Sedap Malam/ <i>Tuberose</i>	-	-	-	-
Euphorbia/ <i>Euphorbia</i>	-	-	-	-
Keladi Hias/ <i>Calladium</i>	-	-	-	-

Sumber/Source: BPS, Statistik Pertanian Hortikultura SPH-TH/BPS-Statistics Indonesia, *Agricultural Statistik for Horticulture SPH-TH*

Tabel
Table 5.6

**Produksi Tanaman Hias Menurut Jenis Tanaman di
Kecamatan Baiturrahman (tangkai), 2020–2023**
*Production of Ornamental Plants by Kind of Plant in
Baiturrahman Subdistrict (stalks), 2020–2023*

Jenis Tanaman <i>Kind of Plants</i>	2020	2021	2022	2023
(1)	(2)	(3)	(4)	(5)
Anggrek/ <i>Orchid</i>	-	-	-	-
Krisan/ <i>Chrysantemum</i>	-	-	-	-
Mawar/ <i>Rose</i>	-	-	-	-
Sedap Malam/ <i>Tuberose</i>	-	-	-	-
Euphorbia/ <i>Euphorbia</i>	-	-	-	-
Keladi Hias/ <i>Calladium</i>	-	-	-	-

Sumber/Source: BPS, Statistik Pertanian Hortikultura SPH-TH/BPS-Statistics Indonesia, *Agricultural Statistik for Horticulture SPH-TH*

Tabel
Table 5.7

Produksi Buah-Buahan dan Sayuran Tahunan Menurut Jenis Tanaman di Kecamatan Baiturrahman (kuintal), 2020–2023
Production of Annual Fruits and Vegetables by Kind of Plant in Baiturrahman Subdistrict (quintal), 2020–2023

Jenis Tanaman <i>Kind of Plants</i>	2020	2021	2022	2023
(1)	(2)	(3)	(4)	(5)
Buah–Buahan/<i>Fruits</i>	-	-	-	-
Alpukat/ <i>Avocado</i>	-	-	-	-
Belimbing/ <i>Star Fruit</i>	46	19	13	14
Jambu Air/ <i>Water Apple</i>	92	42	40	132
Jambu Biji/ <i>Guava</i>	32	13	12	14
Mangga/ <i>Mango</i>	1 290	418	361	156
Melinjo/ <i>Gnetum</i>	20	5	6	11
Nangka/ <i>Cempedak/ Jackfruit</i>	335	144	143	105
Pepaya/ <i>Papaya</i>	97	62	42	23
Pisang/ <i>Banana</i>	77	42	34	27
Rambutan/ <i>Rambutan</i>	36	6	9	9
Salak/ <i>Snakefruit</i>	17	1	-	4
Sawo/ <i>Sapodilla</i>	55	23	1	13
Sirsak/ <i>Soursop</i>	34	24	23	17
Sukun/ <i>Breadfruit</i>	34	48	28	12

Sumber/Source: BPS, Statistik Pertanian Hortikultura SPH-BST/BPS-Statistics Indonesia, *Agricultural Statistic for Horticulture SPH-BST*

Tabel 5.8 Jumlah Ternak Besar Menurut Jenisnya per Gampong di Kecamatan Baiturrahman, 2023
Table 5.8 Number of Large Livestock by Type per Gampong in Baiturrahman Subdistrict, 2023

Gampong Village	Sapi Cow	Kerbau Buffalo	Kambing/ Domba Goat/Sheep	Total Total
(1)	(2)	(3)	(4)	(5)
Ateuk Jawo	71	-	98	169
Ateuk Deah Tanoh	11	-	34	45
Ateuk Pahlawan	-	-	9	9
Ateuk Munjeng	8	-	9	17
Neusu Aceh	48	-	45	93
Seutui	19	-	65	84
Sukaramai	-	-	-	-
Neusu Jaya	-	-	-	-
Peuniti	2	-	5	7
Kampung Baru	-	-	7	7
Kecamatan Baiturrahman	151	-	263	414

Sumber/Source: Dinas Pangan, Pertanian, Kelautan, dan Perikanan Kota Banda Aceh/Food, Agriculture, Marine, and Fishery Service of Banda Aceh Municipality

Tabel
Table 5.9

**Jumlah Ternak Unggas Menurut Jenisnya per Gampong di
Kecamatan Baiturrahman, 2023**
**Number of Poultry Livestock by Type per Gampong in
Baiturrahman Subistrict, 2023**

Gampong Village	Ayam Chicken	Itik Duck	Total Total
(1)	(2)	(3)	(4)
Ateuk Jawo	38	101	139
Ateuk Deah Tanah	205	56	261
Ateuk Pahlawan	161	41	202
Ateuk Munjeng	-	-	-
Neusu Aceh	68	30	98
Seutui	-	180	180
Sukaramai	-	-	-
Neusu Jaya	-	-	-
Peuniti	-	75	75
Kampung Baru	-	-	-
Kecamatan Baiturrahman	472	483	955

Sumber/Source: Dinas Pangan, Pertanian, Kelautan, dan Perikanan Kota Banda Aceh/*Food, Agriculture, Marine, and Fishery Service of Banda Aceh Municipality*

BAB 6

PARIWISATA, TRANSPORTASI & KOMUNIKASI



<https://bandaacehku>

6.1 PARIWISATA TOURISM

Tabel 6.1.1 Jumlah Sarana Akomodasi Menurut Gampong dan Jenis Akomodasi di Kecamatan Baiturrahman, 2021
Table *Number of Accomodation Facilities by Villages and Type of Accomodation in Baiturrahman Subdistrict, 2021*

Gampong/ Village	Hotel/ Hotel	Penginapan/ Inn
(1)	(2)	(3)
Ateuk Jawo	-	-
Ateuk Deah Tanoh	-	-
Ateuk Pahlawan	-	-
Ateuk Munjeng	1	-
Neusu Aceh	-	-
Seutui	1	2
Sukaramai	-	1
Neusu Jaya	-	2
Peuniti	-	2
Kampung Baru	1	3
Kecamatan Baiturrahman	3	10

Sumber/Source: BPS, Pendataan Potensi Desa (Podes) 2021/BPS-Statistics Indonesia, Village Potential Data Collecting 2021

6.2 TRANSPORTASI TRANSPORTATION

Tabel 6.2.1 Prasarana dan Sarana Transportasi Antar Gampong Menurut Gampong di Kecamatan Baiturrahman, 2021
Table 6.2.1 Inter-Villages Transportation Infrastructure and Facilities by Villages in Baiturrahman Subdistrict, 2021

Gampong/ Village	Jenis Prasarana Transportasi/ Type of Transportation Infrastructure	Keberadaan Angkutan Umum/ Availability of Public Transportation
(1)	(2)	(3)
Ateuk Jawo	Darat	Ada, tanpa trayek tetap
Ateuk Deah Tanoh	Darat	Ada, tanpa trayek tetap
Ateuk Pahlawan	Darat	Ada, tanpa trayek tetap
Ateuk Munjeng	Darat	Ada, tanpa trayek tetap
Neusu Aceh	Darat	Ada, tanpa trayek tetap
Seutui	Darat	Ada, dengan trayek tetap
Sukaramai	Darat	Ada, dengan trayek tetap
Neusu Jaya	Darat	Ada, tanpa trayek tetap
Peuniti	Darat	Ada, dengan trayek tetap
Kampung Baru	Darat	Ada, dengan trayek tetap

Lanjutan Tabel/*Continued Table 6.2.1*

Gampong/ Village	Jenis Permukaan Jalan Darat Terluas/ Type of The Widest Road Surface	Dapat Dilalui Kendaraan Bermotor Roda 4 atau Lebih/ Passable by Vehicle with 4 or more Wheels
(1)	(4)	(5)
Ateuk Jawo	Aspal/Beton	Sepanjang tahun
Ateuk Deah Tanoh	Aspal/Beton	Sepanjang tahun
Ateuk Pahlawan	Aspal/Beton	Sepanjang tahun
Ateuk Munjeng	Aspal/Beton	Sepanjang tahun
Neusu Aceh	Aspal/Beton	Sepanjang tahun
Seutui	Aspal/Beton	Sepanjang tahun
Sukaramai	Aspal/Beton	Sepanjang tahun
Neusu Jaya	Aspal/Beton	Sepanjang tahun
Peuniti	Aspal/Beton	Sepanjang tahun
Kampung Baru	Aspal/Beton	Sepanjang tahun

Sumber/*Source*: BPS, Pendataan Potensi Desa (Podes) 2021/*BPS-Statistics Indonesia, Village Potential Data Collecting 2021*

6.3 KOMUNIKASI COMMUNICATION

Tabel 6.3.1 Keberadaan Kantor Pos/Pos Pembantu/Rumah Pos, Pos Keliling, dan Perusahaan/Agen Jasa Ekspedisi Swasta Menurut Gampong di Kecamatan Baiturrahman, 2021
Number of Post Office/Subsidiary of Post Office, Mobile Portal Service, Private Expedition Service Company by Villages in Baiturrahman Subdistrict, 2021

Gampong Village	Kantor Pos/Pos Pembantu/Rumah Pos Post Office/Subsidiary of Post Office	Pos Keliling Mobile Portal Service	Perusahaan/Agen Jasa Ekspedisi Swasta Private Expedition Service Company
(1)	(2)	(3)	(4)
Ateuk Jawo	Tidak ada	Tidak ada	Tidak ada
Ateuk Deah Tanoh	Tidak ada	Tidak ada	Tidak ada
Ateuk Pahlawan	Tidak ada	Tidak ada	Tidak ada
Ateuk Munjeng	Tidak ada	Tidak ada	Tidak ada
Neusu Aceh	Tidak ada	Tidak ada	Beroperasi
Seutui	Tidak ada	Tidak ada	Beroperasi
Sukaramai	Tidak ada	Tidak ada	Beroperasi
Neusu Jaya	Tidak ada	Tidak ada	Tidak ada
Peuniti	Tidak ada	Tidak ada	Tidak ada
Kampung Baru	Beroperasi	Tidak ada	Beroperasi

Sumber/Source: BPS, Pendataan Potensi Desa (Podes) 2021/BPS-Statistics Indonesia, Village Potential Data Collecting 2021

Tabel
Table 6.3.2

Jumlah Menara Telepon seluler dan Operator Layanan Komunikasi Telepon Seluler Menurut Gampong di Kecamatan Baiturrahman, 2021
Number of Base Transceiver Station (BTS) and Cellular Phone Communication Service Operators by Villages in Baiturrahman Subdistrict, 2021

Gampong/ Village	Jumlah Menara Telepon seluler/ Number of Base Transceiver Station (BTS)	Jumlah Operator Layanan Komunikasi Telepon Seluler/ Cellular Phone Communication Service Operators
(1)	(2)	(3)
Ateuk Jawo	4	6
Ateuk Deah Tanoh	2	5
Ateuk Pahlawan	1	6
Ateuk Munjeng	1	6
Neusu Aceh	3	6
Seutui	2	6
Sukaramai	1	6
Neusu Jaya	-	6
Peuniti	2	6
Kampung Baru	3	6
Kecamatan Baiturrahman	19	

Sumber/Source: BPS, Pendataan Potensi Desa (Podes) 2021/BPS-Statistics Indonesia, Village Potential Data Collecting 2021

Tabel 6.3.3 Kekuatan Sinyal Telepon Seluler dan Jenis Sinyal Internet Telepon Seluler Menurut Gampong di Kecamatan Baiturrahman, 2021
The Strength of Cellular Phone Signal by Villages in Baiturrahman Subdistrict, 2021

Gampong Village	Kekuatan Sinyal Telepon Seluler The Strength of Cellular Phone Signal	Jenis Sinyal Internet Telepon Seluler Type of Cellular Phone Signal
(1)	(2)	(3)
Ateuk Jawo	Kuat	4G/LTE
Ateuk Deah Tanoh	Kuat	4G/LTE
Ateuk Pahlawan	Kuat	4G/LTE
Ateuk Munjeng	Kuat	4G/LTE
Neusu Aceh	Kuat	4G/LTE
Seutui	Kuat	4G/LTE
Sukaramai	Kuat	4G/LTE
Neusu Jaya	Kuat	4G/LTE
Peuniti	Kuat	4G/LTE
Kampung Baru	Kuat	4G/LTE

Sumber/Source: BPS, Pendataan Potensi Desa (Podes) 2021/BPS-Statistics Indonesia, Village Potential Data Collecting 2021

BAB 7

PERBANKAN, KOPERASI & PERDAGANGAN



Tabel 7.1
Table

Banyaknya Sarana Lembaga Keuangan Bank Menurut Gampong dan Jenis Bank di Kecamatan Baiturrahman, 2021
Number of Bank by Villages and Type of Bank in Baiturrahman Subdistrict, 2021

Gampong/ Village	Bank Umum Pemerintah/ Government Bank	Bank Umum Swasta/ Private Bank	Bank Perkreditan Rakyat (BPR)/ Rural Bank
(1)	(2)	(3)	(4)
Ateuk Jawo	-	-	-
Ateuk Deah Tanoh	-	-	-
Ateuk Pahlawan	-	-	-
Ateuk Munjeng	-	-	-
Neusu Aceh	1	-	-
Seutui	-	2	-
Sukaramai	-	-	-
Neusu Jaya	-	-	-
Peuniti	-	1	-
Kampung Baru	2	2	1
Kecamatan Baiturrahman	3	5	1

Sumber/Source: BPS, Pendataan Potensi Desa (Podes) 2021/BPS-Statistics Indonesia, Village Potential Data Collecting 2021

Tabel
Table 7.2**Banyaknya Koperasi Aktif Menurut Menurut Gampong dan Jenis Koperasi di Kecamatan Baiturrahman, 2021**
Number of Cooperative by Villages and Type of Cooperative in Baiturrahman Subdistrict, 2021

Gampong/ Village	Koperasi Unit Desa (KUD)/ Village Cooperative Unit	Koperasi Industri Kecil dan Kerajinan Rakyat (Kopinkra)/ Small Industry and Citizen Handicraft Cooperative
(1)	(2)	(3)
Ateuk Jawo	-	-
Ateuk Deah Tanoh	-	-
Ateuk Pahlawan	-	-
Ateuk Munjeng	-	-
Neusu Aceh	-	-
Seutui	-	-
Sukaramai	-	-
Neusu Jaya	-	-
Peuniti	1	-
Kampung Baru	-	-
Kecamatan Baiturrahman	1	-

Lanjutan Tabel/*Continued Table 7.2*

Gampong/ Village	Koperasi Simpan Pinjam (Kospin)/ Savings and Loan Cooperative	Koperasi Lainnya/ Other Cooperative
(1)	(4)	(5)
Ateuk Jawo	-	-
Ateuk Deah Tanoh	-	-
Ateuk Pahlawan	-	-
Ateuk Munjeng	-	-
Neusu Aceh	-	-
Seutui	-	-
Sukaramai	2	-
Neusu Jaya	-	-
Peuniti	-	-
Kampung Baru	-	1
Kecamatan Baiturrahman	2	1

Sumber/*Source*: BPS, Pendataan Potensi Desa (Podes) 2021/*BPS-Statistics Indonesia, Village Potential Data Collecting 2021*

Tabel
Table 7.3

Banyaknya Sarana Perdagangan Menurut Gampong dan Jenis Sarana Perdagangan di Kecamatan Baiturrahman, 2021
Number of Trade Facilities by Villages and Type of Trade Facilities in Baiturrahman Subdistrict, 2021

Gampong/ Village	Kelompok Pertokoan/ Shopping Complexs	Pasar dengan Bangunan Permanen/ Markets in Permanent Building	Pasar dengan Bangunan Semi Permanen/ Market in Semi Permanent Building
(1)	(2)	(3)	(4)
Ateuk Jawo	1	-	-
Ateuk Deah Tanoh	-	-	-
Ateuk Pahlawan	9	-	1
Ateuk Munjeng	1	-	-
Neusu Aceh	4	-	1
Seutui	1	1	-
Sukaramai	4	-	-
Neusu Jaya	1	-	-
Peuniti	3	1	1
Kampung Baru	27	2	-
Kecamatan Baiturrahman	51	4	3

Lanjutan Tabel/*Continued Table 7.3*

Gampong/ Village	Pasar tanpa Bangunan/ Market without Permanent Building	Mini Market/ Swalayan/ Supermarket/ Mini Market/Swalayan/ Supermarket	Restoran/ Rumah Makan/ Restaurant/ Food Stall
(1)	(5)	(6)	(7)
Ateuk Jawo	-	-	-
Ateuk Deah Tanoh	-	-	-
Ateuk Pahlawan	-	-	-
Ateuk Munjeng	-	1	-
Neusu Aceh	-	4	-
Seutui	-	2	1
Sukaramai	-	-	1
Neusu Jaya	-	3	-
Peuniti	-	3	-
Kampung Baru	-	5	-
Kecamatan Baiturrahman	-	18	2

Sumber/*Source*: BPS, Pendataan Potensi Desa (Podes) 2021/*BPS-Statistics Indonesia, Village Potential Data Collecting 2021*

ST 2023

SENSUS PERTANIAN

BerAKHLAK

Berorientasi Pelayanan Akuntabel Kompeten
Harmonis Loyal Adaptif Kolaboratif

DATA

MENCERDASKAN BANGSA

<https://bandaacehkota.bps.go.id>



**BADAN PUSAT STATISTIK
KOTA BANDA ACEH**

Jln. Laksamana Malahayati Km 6,5 Desa Baet
Kab.Aceh Besar Telp/Fax: (0651) 8012501
Email : bps1171@bps.go.id