

**KECAMATAN**

# **BONTANG BARAT DALAM ANGKA**

*Bontang Barat Subdistrict in Figures*



**BADAN PUSAT STATISTIK  
KOTA BONTANG**  
*BPS-Statistics of Bontang Municipality*

**2017**

KECAMATAN

# BONTANG BARAT DALAM ANGKA

*Bontang Barat Subdistrict in Figures*



2017

**Kecamatan Bontang Barat Dalam Angka**  
***Bontang Barat Subdistrict in Figures***  
**2017**

ISBN: 978-602-550-202-6

No. Publikasi/*Publication Number*: 64740.1709

Katalog/*Catalog*: 1102001.6474030

Ukuran Buku/*Book Size*: 14,8 cm x 21 cm

Jumlah Halaman/*Number of Pages*: xxii + 88 halaman /*pages*

Naskah/*Manuscript*:

**Badan Pusat Statistik Kota Bontang**

*BPS-Statistics of Bontang Municipality*

Desain Kover/*Cover Designed by*:

**Badan Pusat Statistik Kota Bontang**

*BPS-Statistics of Bontang Municipality*

Ilustrasi Kover/*Cover Illustration*:

**Gapura Selamat Datang Bontang**/*Welcome Gate of Bontang*

Diterbitkan oleh/*Published by*:

© **Badan Pusat Statistik Kota Bontang**/*BPS-Statistics of Bontang Municipality*

Dicetak oleh/*Printed by*:

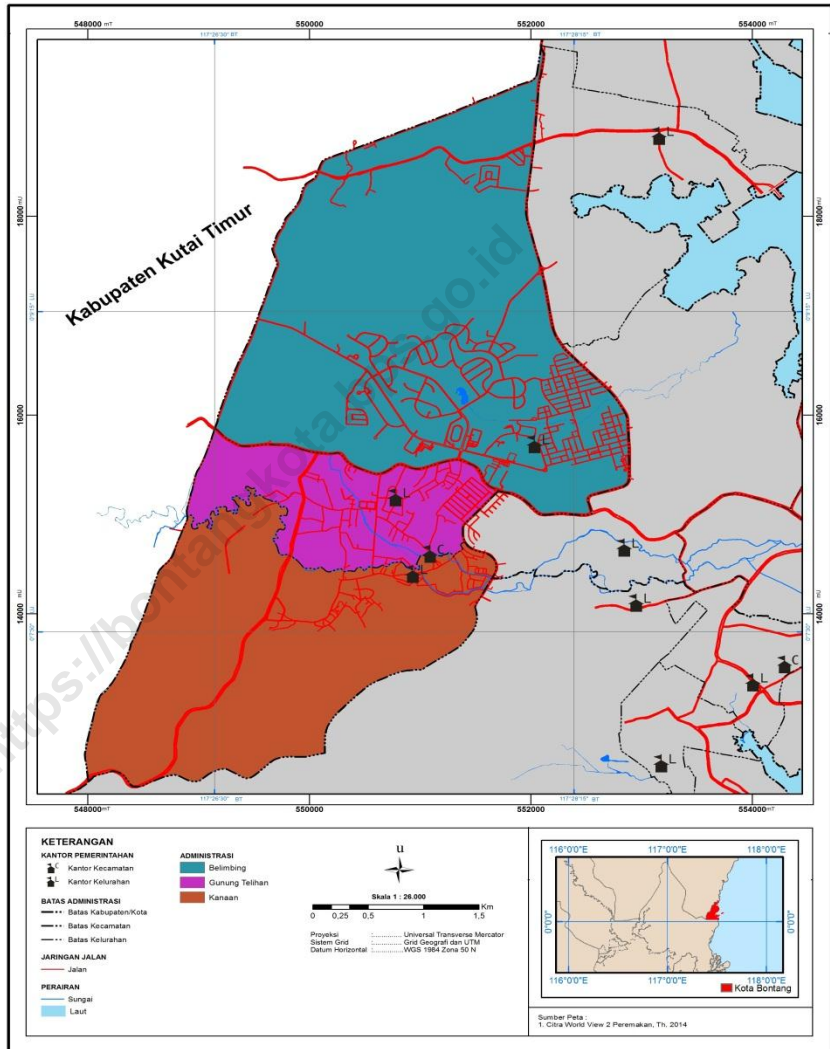
CV. Suvi Sejahtera

**Dilarang mengumumkan, mendistribusikan, mengomunikasikan, dan/atau  
menggandakan sebagian atau seluruh isi buku ini untuk tujuan komersial tanpa izin  
tertulis dari Badan Pusat Statistik**

*Prohibited to announce, distribute, communicate, and/or copy part or all of this book  
for commercial purpose without permission from BPS-Statistics Indonesia*

# PETA WILAYAH KECAMATAN BONTANG BARAT

## MAP OF BONTANG BARAT SUBDISTRICT





**KEPALA BPS KOTA BONTANG**  
*CHIEF STATISTICIAN OF BONTANG MUNICIPALITY*



**Drs. H. Basiran Suwandi**





## KATA PENGANTAR

Kecamatan Bontang Barat Dalam Angka 2017 merupakan kelanjutan dari publikasi tahun sebelumnya yang diterbitkan secara berkala oleh Badan Pusat Statistik Kota Bontang. Publikasi ini merupakan upaya dalam mengembangkan perstatistikan daerah dengan menyediakan data yang terpadu bagi para *stakeholder* khususnya di daerah Kecamatan Bontang Barat.

Adapun data yang disajikan dalam publikasi ini merupakan data primer dan data sekunder yang dikumpulkan dari dinas/badan/instansi pemerintah maupun swasta yang ada di Kota Bontang. Publikasi ini diharapkan dapat memberikan gambaran umum keadaan Kota Bontang.

Kepada semua pihak yang telah membantu terbitnya publikasi ini, kami ucapkan terima kasih. Kritik dan saran dari pembaca sangat kami harapkan demi perbaikan di masa yang akan datang. Semoga publikasi ini bermanfaat bagi kita semua.

Bontang, September 2017  
Kepala Badan Pusat Statistik  
Kota Bontang



Drs. H. Basiran Suwandi





*Bontang Barat Subdistrict in Figures 2017 is a continuation of the previous year's publication published periodically by BPS-Statistics of Bontang Municipality. This publication is an effort to develop regional statistics by providing integrated data for stakeholders, especially in Bontang Barat Subdistrict.*

*This publication obtain its data from primary and secondary data that collected from government and private boards/institutions in Bontang Municipality. It may give an overview of Bontang Municipality condition.*

*We would like to say thanks to everyone involved and contributed to make this publication possible. All inputs from users are required, to improve the next publications. Hopefully it is useful for all of us.*

*Bontang, September 2017  
Chief Statistician of  
Bontang Municipality*



*Drs. H. Basiran Suwandi*

## DAFTAR ISI/CONTENTS

	Halaman <i>Page</i>
Kata Pengantar .....	vii
Daftar Isi/ <i>Contents</i> .....	ix
Daftar Tabel/ <i>List of Tables</i> .....	xi
Penjelasan Umum/ <i>Explanatory Notes</i> .....	xxi
1 Geografi dan Iklim/ <i>Geography and Climate</i> .....	1
1.1 Geografi/ <i>Geography</i> .....	3
1.2 Iklim/ <i>Climate</i> .....	6
2 Pemerintahan/ <i>Government</i> .....	7
3 Kependudukan/ <i>Population</i> .....	13
4 Sosial/ <i>Social</i> .....	21
5 Pertanian/ <i>Agriculture</i> .....	59
6 Perdagangan/ <i>Trade</i> .....	71
7 Hotel/ <i>Hotel</i> .....	79
8 Harga/ <i>Price</i> .....	83



## DAFTAR TABEL/LIST OF TABLES

Halaman

Page

### 1 GEOGRAFI DAN IKLIM/*GEOGRAPHY AND CLIMATE*

#### 1.1 GEOGRAFI/*GEOGRAPHY*

1.1.1 Letak dan Luas Kecamatan Bontang Barat  
*Location and Area of Bontang Barat Subdistrict* ..... 3

1.1.2 Luas Wilayah Menurut Kelurahan di Kecamatan Bontang Barat,  
2016  
*Total Area by Village in Bontang Barat Subdistrict, 2016* ..... 4

1.1.3 Jarak dari Kelurahan ke Ibukota Kecamatan di Kecamatan Bontang  
Barat (km), 2016  
*Distance between Village and Capital of Subdistrict in Bontang  
Barat Subdistrict (km), 2016* ..... 5

#### 1.2 IKLIM/*CLIMATE*

1.2.1 Jumlah Curah Hujan dan Hari Hujan Menurut Bulan di Kecamatan  
Bontang Barat, 2016  
*Amount of Precipitation and Number of Rainy Days by Month in  
Bontang Barat Subdistrict, 2016* ..... 6

### 2 PEMERINTAHAN/*GOVERNMENT*

2.1 Jumlah Dusun dan Rukun Tetangga (RT) Menurut Kelurahan di  
Kecamatan Bontang Barat, 2016  
*Number of Dusun and RT by Village in Bontang Barat Subdistrict,  
2016* ..... 9

2.2 Jumlah Aparat Pemerintahan Kelurahan Menurut Kelurahan di  
Kecamatan Bontang Barat, 2016  
*Number of Village Government Apparatus by Village in Bontang  
Barat Subdistrict, 2016* ..... 10

2.3	Jumlah LPM dan Pengurus LPM Menurut Kelurahan di Kecamatan Bontang Barat, 2016 <i>Number of LPM and LPM Board by Village in Bontang Barat Subdistrict, 2016</i> .....	11
-----	--------------------------------------------------------------------------------------------------------------------------------------------------------------------------	----

### **3 KEPENDUDUKAN/POPULATION**

3.1	Jumlah Penduduk Menurut Kelurahan dan Jenis Kelamin di Kecamatan Bontang Barat, 2016 <i>Population by Village and Sex in Bontang Barat Subdistrict, 2016</i> ...	15
3.2	Rasio Jenis Kelamin Penduduk Menurut Kelurahan di Kecamatan Bontang Barat, 2016 <i>Sex Ratio by Village in Bontang Barat Subdistrict, 2016</i> .....	16
3.3	Kepadatan Penduduk Menurut Kelurahan di Kecamatan Bontang Barat, 2016 <i>Density by Village in Bontang Barat Subdistrict, 2016</i> .....	17
3.4	Rata-Rata Jiwa per Kepala Keluarga Menurut Kelurahan di Kecamatan Bontang Barat, 2016 <i>Average Soul per Head of Family by Village in Bontang Barat Subdistrict, 2016</i> .....	18
3.5	Jumlah Kelahiran dan Kematian Menurut Kelurahan di Kecamatan Bontang Barat, 2016 <i>Number of Birth and Dead by Village in Bontang Barat Subdistrict, 2016</i> .....	19
3.6	Jumlah Migrasi Menurut Kelurahan di Kecamatan Bontang Barat, 2016 <i>Number of Migration by Village in Bontang Barat Subdistrict, 2016</i>	20

### **4 SOSIAL/SOCIAL**

4.1	Jumlah Sekolah, Murid, Guru, dan Rasio Murid-Guru Taman Kanak-Kanak (TK)/ Raudhatul Athfal (RA) Swasta Menurut Kelurahan di Kecamatan Bontang Barat, 2016 <i>Number of Schools, Pupils, Teachers, and Pupil-Teacher Ratio of Private Kindergarten by Village in Bontang Barat Subdistrict, 2016</i>	23
-----	--------------------------------------------------------------------------------------------------------------------------------------------------------------------------------------------------------------------------------------------------------------------------------------------------------	----

4.2	Jumlah Sekolah, Murid, Guru, dan Rasio Murid-Guru Sekolah Dasar (SD) Negeri Menurut Kelurahan di Kecamatan Bontang Barat, 2016 <i>Number of Schools, Pupils, Teachers, and Pupil-Teacher Ratio of State Primary Schools by Village in Bontang Barat Subdistrict, 2016</i> .....	24
4.3	Jumlah Sekolah, Murid, Guru, dan Rasio Murid-Guru Sekolah Dasar (SD) Swasta Menurut Kelurahan di Kecamatan Bontang Barat, 2016 <i>Number of Schools, Pupils, Teachers, and Pupil-Teacher Ratio of Private Primary Schools by Village in Bontang Barat Subdistrict, 2016</i> .....	25
4.4	Jumlah Sekolah, Murid, Guru, dan Rasio Murid-Guru Sekolah Menengah Pertama (SMP) Negeri Menurut Kelurahan di Kecamatan Bontang Barat, 2016 <i>Number of Schools, Pupils, Teachers, and Pupil-Teacher Ratio State Junior High Schools by Village in Bontang Barat Subdistrict, 2016</i> .....	26
4.5	Jumlah Sekolah, Murid, Guru, dan Rasio Murid-Guru Sekolah Menengah Pertama (SMP) Swasta Menurut Kelurahan di Kecamatan Bontang Barat, 2016 <i>Number of Schools, Pupils, Teachers, and Pupil-Teacher Ratio Private Junior High Schools by Village in Bontang Barat Subdistrict, 2016</i> .....	27
4.6	Jumlah Sekolah, Murid, Guru, dan Rasio Murid-Guru Madrasah Tsanawiyah (MTs) Swasta Menurut Kelurahan di Kecamatan Bontang Barat, 2016 <i>Number of Schools, Pupils, Teachers, and Pupil-Teacher Ratio Private Madrasah Tsanawiyah (MTs) by Village in Bontang Barat Subdistrict, 2016</i> .....	28
4.7	Jumlah Sekolah, Murid, Guru, dan Rasio Murid-Guru Sekolah Menengah Atas (SMA) Negeri Menurut Kelurahan di Kecamatan Bontang Barat, 2016 <i>Number of Schools, Pupils, Teachers, and Pupil-Teacher Ratio State Senior High Schools by Village in Bontang Barat Subdistrict, 2016</i> .....	29

4.8	Jumlah Sekolah, Murid, Guru, dan Rasio Murid-Guru Sekolah Menengah Atas (SMA) Swasta Menurut Kelurahan di Kecamatan Bontang Barat, 2016 <i>Number of Schools, Pupils, Teachers, and Pupil-Teacher Ratio Private Senior High Schools by Village in Bontang Barat Subdistrict, 2016</i> .....	30
4.9	Jumlah Sekolah, Murid, Guru, dan Rasio Murid-Guru Sekolah Menengah Kejuruan (SMK) Negeri Menurut Kelurahan di Kecamatan Bontang Barat, 2016 <i>Number of Schools, Pupils, Teachers, and Pupil-Teacher Ratio State Vocational High Schools by Village in Bontang Barat Subdistrict, 2016</i> .....	31
4.10	Jumlah Sekolah, Murid, Guru, dan Rasio Murid-Guru Sekolah Menengah Kejuruan (SMK) Swasta Menurut Kelurahan di Kecamatan Bontang Barat, 2016 <i>Number of Schools, Pupils, Teachers, and Pupil-Teacher Ratio Private Vocational High Schools by Village in Bontang Barat Subdistrict, 2016</i> .....	32
4.11	Jumlah Peserta Ujian, Kelulusan, dan Persentase Kelulusan Sekolah Dasar (SD) Negeri Menurut Kelurahan di Kecamatan Bontang Barat, 2016 <i>Number of Exam Participants, Graduates, and Graduation Percentage of State Primary Schools by Village in Bontang Barat Subdistrict, 2016</i> .....	33
4.12	Jumlah Peserta Ujian, Kelulusan, dan Persentase Kelulusan Sekolah Dasar (SD) Swasta Menurut Kelurahan di Kecamatan Bontang Barat, 2016 <i>Number of Exam Participants, Graduates, and Graduation Percentage of Private Primary Schools by Village in Bontang Barat Subdistrict, 2016</i> .....	34
4.13	Jumlah Peserta Ujian, Kelulusan, dan Persentase Kelulusan Sekolah Menengah Pertama (SMP) Negeri Menurut Kelurahan di Kecamatan Bontang Barat, 2016 <i>Number of Exam Participants, Graduates, and Graduation Percentage of State Junior High Schools by Village in Bontang Barat Subdistrict, 2016</i> .....	35

4.14	Jumlah Peserta Ujian, Kelulusan, dan Persentase Kelulusan Sekolah Menengah Pertama (SMP) Swasta Menurut Kelurahan di Kecamatan Bontang Barat, 2016 <i>Number of Exam Participants, Graduates, and Graduation Percentage of Private Junior High Schools by Village in Bontang Barat Subdistrict, 2016</i> .....	36
4.15	Jumlah Peserta Ujian, Kelulusan, dan Persentase Kelulusan Madrasah Tsanawiyah (MTs) Swasta Menurut Kelurahan di Kecamatan Bontang Barat, 2016 <i>Number of Exam Participants, Graduates, and Graduation Percentage of Private Madrasah Tsanawiyah (MTs) by Village in Bontang Barat Subdistrict, 2016</i> .....	37
4.16	Jumlah Peserta Ujian, Kelulusan, dan Persentase Kelulusan Sekolah Menengah Atas (SMA) Negeri Menurut Kelurahan di Kecamatan Bontang Barat, 2016 <i>Number of Exam Participants, Graduates, and Graduation Percentage of State Senior High Schools by Village in Bontang Barat Subdistrict, 2016</i> .....	38
4.17	Jumlah Peserta Ujian, Kelulusan, dan Persentase Kelulusan Sekolah Menengah Atas (SMA) Swasta Menurut Kelurahan di Kecamatan Bontang Barat, 2016 <i>Number of Exam Participants, Graduates, and Graduation Percentage of Private Senior High Schools by Village in Bontang Barat Subdistrict, 2016</i> .....	39
4.18	Jumlah Peserta Ujian, Kelulusan, dan Persentase Kelulusan Sekolah Menengah Kejuruan (SMK) Negeri Menurut Kelurahan di Kecamatan Bontang Barat, 2016 <i>Number of Exam Participants, Graduates, and Graduation Percentage of State Vocational High Schools by Village in Bontang Barat Subdistrict, 2016</i> .....	40
4.19	Jumlah Peserta Ujian, Kelulusan, dan Persentase Kelulusan Sekolah Menengah Kejuruan (SMK) Swasta Menurut Kelurahan di Kecamatan Bontang Barat, 2016 <i>Number of Exam Participants, Graduates, and Graduation Percentage of Private Vocational High Schools by Village in Bontang Barat Subdistrict, 2016</i> .....	41



4.20	Jumlah Fasilitas Kesehatan Menurut Kelurahan di Kecamatan Bontang Barat, 2016 <i>Number of Health Facilities by Village in Bontang Barat Subdistrict, 2016</i> .....	42
4.21	Jumlah Tenaga Kesehatan Menurut Kelurahan di Kecamatan Bontang Barat, 2016 <i>Number of Health Personnel by Village in Bontang Barat Subdistrict, 2016</i> .....	44
4.22	Jumlah Apotek, Toko Obat, dan Gudang Farmasi Menurut Kelurahan di Kecamatan Bontang Barat, 2016 <i>Number of Chemist, Drugstore, and Pharmacy Warehouse by Village in Bontang Barat Subdistrict, 2016</i> .....	46
4.23	Jumlah Penyandang Cacat Menurut Kelurahan di Kecamatan Bontang Barat, 2016 <i>Number of Persons with Disabilities by Village in Bontang Barat Subdistrict, 2016</i> .....	47
4.24	Jumlah Perangkat Keluarga Berencana Menurut Kelurahan di Kecamatan Bontang Barat, 2016 <i>Number of Family Planning Devices by Village in Bontang Barat Subdistrict, 2016</i> .....	49
4.25	Jumlah Pasangan Usia Subur dan Peserta KB Aktif Menurut Kelurahan di Kecamatan Bontang Barat, 2016 <i>Number of Eligible Couples and Family Planning Active Participants by Village in Bontang Barat Subdistrict, 2016</i> .....	50
4.26	Pencapaian Akseptor Baru Menurut Kelurahan dan Metode Kontrasepsi di Kecamatan Bontang Barat, 2016 <i>Realization of New Acceptor by Village and Contraception Method in Bontang Barat Subdistrict, 2016</i> .....	52
4.27	Jumlah Penduduk Menurut Kelurahan dan Agama yang Dianut di Kecamatan Bontang Barat, 2016 <i>Population by Village and Religion in Bontang Barat Subdistrict, 2016</i> .....	54

4.28	Jumlah Tempat Peribadatan Menurut Kelurahan di Kecamatan Bontang Barat, 2016 <i>Number of Worship Facilities by Village in Bontang Barat Subdistrict, 2016</i> .....	55
4.29	Nikah, Talak dan Cerai, serta Rujuk Menurut Kelurahan di Kecamatan Bontang Barat, 2016 <i>Number of Marriages, Divorces, and Reconciliations by Village in Bontang Barat Subdistrict, 2016</i> .....	56
4.30	Jumlah Pernikahan Menurut Kelurahan dan Walinya di Kecamatan Bontang Barat, 2016 <i>Number of Marriages by Village and Guardians in Bontang Barat Subdistrict, 2016</i> .....	57
4.31	Jumlah Lokasi dan Luas Wakaf Tanah Menurut Kelurahan dan Jenis Akta Wakaf di Kecamatan Bontang Barat, 2016 <i>Number of Location and Area of Land Wakaf by Village and Type of Deed of Wakaf in Bontang Barat Subdistrict, 2016</i> .....	58
<b>5</b>	<b>PERTANIAN/AGRICULTURE</b>	
5.1	Luas Panen Padi di Kecamatan Bontang Barat (ha), 2016 <i>Harvested Area of Paddy in Bontang Barat Subdistrict (ha), 2016</i> ...	61
5.2	Luas Panen Tanaman Palawija Menurut Jenis Tanaman di Kecamatan Bontang Barat (ha), 2016 <i>Harvested Area of Secondary Crops by Kind of Plant in Bontang Barat Subdistrict (ha), 2016</i> .....	62
5.3	Produksi Tanaman Sayuran Menurut Jenis Tanaman di Kecamatan Bontang Barat (kuintal), 2016 <i>Production of Vegetables by Kind of Plant in Bontang Barat Subdistrict (quintal), 2016</i> .....	63
5.4	Produksi Tanaman Buah-Buahan Menurut Jenis Buah di Kecamatan Bontang Barat (kuintal), 2016 <i>Production of Fruits by Kind of Fruit in Bontang Barat Subdistrict (quintal), 2016</i> .....	64

5.5	Produksi Tanaman Biofarmaka Menurut Jenis Tanaman di Kecamatan Bontang Barat (kg), 2016 <i>Production of Medical Plants by Kind of Plant in Bontang Barat Subdistrict (kg), 2016</i> .....	65
5.6	Luas Areal dan Produksi Tanaman Perkebuanan Menurut Jenis Tanaman di Kecamatan Bontang Barat, 2016 <i>Planted Area and Production of Estate Crops by Kind of Plant in Bontang Barat Subdistrict, 2016</i> .....	66
5.7	Populasi Ternak Menurut Jenis Ternak di Kecamatan Bontang Barat (ekor), 2016 <i>Livestock Population by Kind of Livestock in Bontang Barat Subdistrict (heads), 2016</i> .....	67
5.8	Populasi Unggas Menurut Jenis Unggas di Kecamatan Bontang Barat (ekor), 2016 <i>Poultry Population by Kind of Poultry in Bontang Barat Subdistrict (heads), 2016</i> .....	68
5.9	Jumlah Rumah Tangga dan Produksi Perikanan Menurut Subsektor Perikanan di Kecamatan Bontang Barat, 2016 <i>Number of Households and Production of Fishery by Fishery Subsector in Bontang Barat Subdistrict, 2016</i> .....	69
<b>6</b>	<b>PERDAGANGAN/TRADE</b>	
6.1	Jumlah Pedagang Menurut Klasifikasinya di Kecamatan Bontang Barat, 2015-2016 <i>Number of Traders by Classification in Bontang Barat Subdistrict, 2015-2016</i> .....	73
6.2	Jumlah Koperasi Menurut Kelurahan dan Jenis Koperasi di Kecamatan Bontang Barat, 2016 <i>Number of Cooperatives by Village and Type of Cooperatives in Bontang Barat Subdistrict, 2016</i> .....	74
6.3	Jumlah Koperasi Menurut Kelurahan dan Kelompok Usaha di Kecamatan Bontang Barat, 2016 <i>Number of Cooperatives by Village and Business Group in Bontang Barat Subdistrict, 2016</i> .....	75

## **7 HOTEL/HOTE**

- 7.1 Jumlah Hotel Menurut Kelurahan dan Klasifikasi di Kecamatan Bontang Barat, 2016  
*Number of Hotel by Village and Classified Hotel in Bontang Barat Subdistrict, 2016* ..... 81
- 7.2 Jumlah Akomodasi Hotel Menurut Kelurahan di Kecamatan Bontang Barat, 2015-2016  
*Number of Hotel Accomodations by Village in Bontang Barat Subdistrict, 2015-2016* ..... 82

## **8 HARGA/PRICE**

- 8.1 Rata-Rata Harga Eceran Beberapa Jenis Barang Menurut Bulan di Pasar Telihan (rupiah), 2016  
*Retail Prices of Selected Commodities by Month in Telihan Market (rupiahs), 2016* ..... 85



## PENJELASAN UMUM/EXPLANATORY NOTES

Tanda-tanda, satuan-satuan, dan lain-lainnya yang digunakan dalam publikasi ini adalah sebagai berikut:

*Symbols, measurement units, and acronyms which are used in this publication, are as follows:*

### 1. TANDA\_TANDA/SYMBOLS

Data tidak tersedia/ <i>Data not available</i>	:	...
Tidak ada atau nol/ <i>Null or zero</i>	:	-
Data dapat diabaikan/ <i>Data negligible</i>	:	0
Tanda desimal/ <i>Decimal point</i>	:	,
Data tidak dapat ditampilkan/ <i>Not applicable</i>	:	NA
Angka perkiraan/ <i>Estimated figures</i>	:	<sup>e</sup>
Angka sementara/ <i>Preliminary figures</i>	:	x
Angka sangat sementara/ <i>Very preliminary figures</i>	:	xx
Angka diperbaiki/ <i>Revised figures</i>	:	r

### 2. SATUAN/UNITS

barel/ <i>barrel</i>	:	158,99 liter/ <i>litres</i> =1/6,2898 m <sup>3</sup>
hektar (ha)/ <i>hectare (ha)</i>	:	10 000 m <sup>2</sup>
kilometer (km)/ <i>kilometres (km)</i>	:	1 000 meter/ <i>meters (m)</i>
knot/ <i>knot</i>	:	1,8523 km/jam (km/hour)
kuintal/ <i>quintal</i>	:	100 kg
KWh	:	1 000 Watt hour
MWh	:	1 000 KWh
liter (untuk beras)/ <i>litre (for rice)</i>	:	0,80 kg
ons/ <i>ounce</i>	:	28,31 gram/ <i>grams</i>
ton	:	1 000 kg

Satuan lain: buah, dus, helai/lembar, kaleng, batang, pulsa, ton kilometer (ton-km), jam, menit, persen (%).

*Other units: unit, pack, pieces, sheet, tin, pulse, ton kilometres (ton-km), hour, minute, percent (%).*

Perbedaan angka dibelakang koma disebabkan oleh pembulatan angka.

*The difference in decimal numbers is caused by rounding.*



# GEOGRAFI DAN IKLIM

GEOGRAPHY AND CLIMATE

# 1

BAB  
Chapter

## RATA-RATA CURAH HUJAN

*Average of Precipitation*

2016



**JUNI**

*June*

**312,8 mm<sup>3</sup>**



**FEBRUARI**

*February*

**2,0 mm<sup>3</sup>**





## 1.1 GEOGRAFI/*GEOGRAPHY*

**Tabel 1.1.1 Letak dan Luas Kecamatan Bontang Barat**  
***Table Location and Area of Bontang Barat Subdistrict***

Batas	Utara	Kabupaten Kutai Timur
<i>Border</i>	<i>North</i>	<i>Kutai Timur Regency</i>
	Timur	Kecamatan Bontang Utara
	<i>East</i>	<i>Bontang Utara Subdistrict</i>
	Selatan	Kecamatan Bontang Selatan
	<i>South</i>	<i>Bontang Selatan Subdistrict</i>
	Barat	Kabupaten Kutai Timur
	<i>West</i>	<i>Kutai Timur Regency</i>
Luas Wilayah		17,9339 km <sup>2</sup>
<i>Area</i>		
Jumlah Kelurahan		3 kelurahan/ <i>village</i>
<i>Number of villages</i>		

Sumber/*Source*: Kantor Camat Bontang Barat/*Bontang Barat Subdistrict Office*

**Tabel 1.1.2 Luas Wilayah Menurut Kelurahan di Kecamatan Bontang Barat, 2016**  
**Table Total Area by Village in Bontang Barat Subdistrict, 2016**

Kelurahan Village	Luas (km <sup>2</sup> ) Area (square.km)	Persentase Percentage
(1)	(2)	(3)
1. Kanaan	6,0167	33,55
2. Gunung Telihan	2,3031	12,84
3. Belimbing	9,6141	53,61
<b>Bontang Barat</b>	<b>17,9339</b>	<b>100,00</b>

Sumber/Source: Badan Perencanaan, Penelitian, dan Pembangunan Kota Bontang/Regional Development Planning Board of Bontang Municipality

1. Permendagri 20 Tahun 2015
2. Perda RDTR No. 1 Tahun 2016
3. Hasil Analisis

**Tabel 1.1.3** Jarak dari Kelurahan ke Ibukota Kecamatan di Kecamatan Bontang Barat (km), 2016  
*Distance between Village and Capital of Subdistrict in Bontang Barat Subdistrict (km), 2016*

Kelurahan <i>Village</i>	Ibukota Kecamatan <i>Capital of Subdistrict</i>	Jarak ke Ibukota Kecamatan <i>Distance to Subdistrict Capital</i>
(1)	(2)	(3)
1. Kanaan	Kanaan	0,0
2. Gunung Telihan	Kanaan	3,0
3. Belimbing	Kanaan	1,0

Sumber/Source: Kantor Camat Bontang Barat/Bontang Barat Subdistrict Office

1.2 IKLIM/CLIMATE

**Tabel 1.2.1** Jumlah Curah Hujan dan Hari Hujan Menurut Bulan di Kecamatan Bontang Barat, 2016  
*Amount of Precipitation and Number of Rainy Days by Month in Bontang Barat Subdistrict, 2016*

Bulan Month	Curah Hujan Precipitation (mm <sup>3</sup> )	Hari Hujan Rainy Days
(1)	(2)	(3)
Januari/January	94,30	4
Februari/February	2,00	1
Maret/March	64,90	5
April/April	107,40	9
Mei/May	101,80	8
Juni/June	312,80	14
Juli/July	287,30	12
Agustus/August	98,80	9
September/September	201,00	15
Oktober/October	245,30	19
November/November	183,20	15
Desember/December	261,80	16

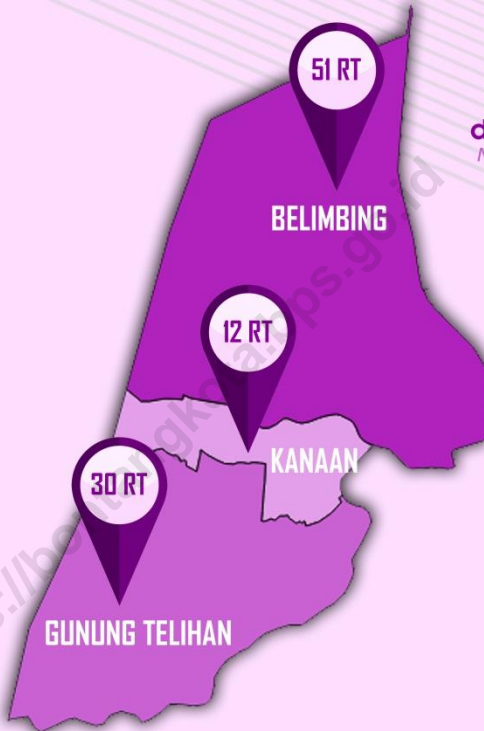
Sumber/Source: Dinas Ketahanan Pangan, Perikanan, dan Pertanian Kota Bontang/*Food Security, Fishery, and Agriculture Department of Bontang Municipality*

# PEMERINTAHAN

GOVERNMENT

# 2

BAB  
Chapter



Jumlah Rukun Tetangga  
di Kecamatan Bontang Barat  
*Number of RT in Bontang Barat Subdistrict*  
**2016**



**Tabel 2.1** Jumlah Dusun dan Rukun Tetangga (RT) Menurut Kelurahan di Kecamatan Bontang Barat, 2016  
*Number of Dusun and RT by Village in Bontang Barat Subdistrict, 2016*

<b>Kelurahan Village</b>	<b>Dusun Dusun</b>	<b>Rukun Tetangga RT</b>
(1)	(2)	(3)
1. Kanaan	-	12
2. Gunung Telihan	-	30
3. Belimbing	-	51
<b>Bontang Barat</b>	-	<b>93</b>

Sumber/Source: Kantor Camat Bontang Barat/Bontang Barat Subdistrict Office



**Tabel 2.2** Jumlah Aparat Pemerintahan Kelurahan Menurut Kelurahan di Kecamatan Bontang Barat, 2016  
**Table** Number of Village Government Apparatus by Village in Bontang Barat Subdistrict, 2016

Kelurahan Village	Pamong Kelurahan <sup>1</sup>	Rukun Tetangga (RT) <sup>2</sup>
(1)	(2)	(3)
1. Kanaan	33	36
2. Gunung Telihan	26	90
3. Belimbing	23	153
<b>Bontang Barat</b>	<b>82</b>	<b>279</b>

Catatan/Note: <sup>1</sup> Terdiri dari PNS dan honorer

<sup>2</sup> Terdiri dari Ketua, Sekretaris, dan Bendahara RT

Sumber/Source: Kantor Camat Bontang Barat/Bontang Barat Subdistrict Office

**Tabel 2.3** Jumlah LPM dan Pengurus LPM Menurut Kelurahan di Kecamatan Bontang Barat, 2016  
**Table** *Number of LPM and LPM Board by Village in Bontang Barat Subdistrict, 2016*

Kelurahan <i>Village</i>	LPM <i>LPM</i>	Pengurus LPM <i>LPM Board</i>
(1)	(2)	(3)
1. Kanaan	1	11
2. Gunung Telihan	1	18
3. Belimbing	1	23
<b>Bontang Barat</b>	<b>3</b>	<b>52</b>

Sumber/Source: Kantor Camat Bontang Barat/Bontang Barat Subdistrict Office



# KEPENDUDUKAN

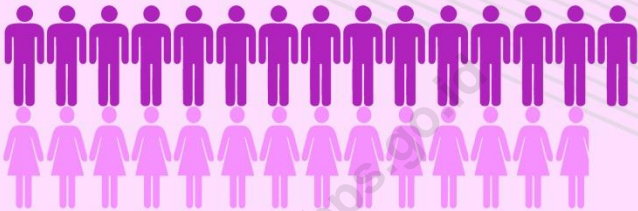
POPULATION

# 3

BAB  
Chapter

## Penduduk Menurut Jenis Kelamin Kecamatan Bontang Barat, 2016

Population by Sex in Bontang Barat Subdistrict, 2016



Jumlah  
Total

29.017

Laki-Laki  
Male

15.080



Rasio Jenis Kelamin  
Sex Ratio

108,20

Perempuan  
Female

13.937



**Tabel 3.1** Jumlah Penduduk Menurut Kelurahan dan Jenis Kelamin di Kecamatan Bontang Barat, 2016  
**Table** *Population by Village and Sex in Bontang Barat Subdistrict, 2016*

	Kelurahan <i>Village</i>	Laki-Laki <i>Male</i>	Perempuan <i>Female</i>	Jumlah <i>Total</i>
	(1)	(2)	(3)	(4)
1.	Kanaan	2 281	2 089	4 370
2.	Gunung Telihan	6 787	6 245	13 032
3.	Belimbing	6 012	5 603	11 615
<b>Bontang Barat</b>		<b>15 080</b>	<b>13 937</b>	<b>29 017</b>

Sumber/Source: Dinas Kependudukan dan Pencatatan Sipil Kota Bontang/Population & Civil Registration Board of Bontang Municipality

POPULATION

**Tabel 3.2** Rasio Jenis Kelamin Penduduk Menurut Kelurahan di Kecamatan Bontang Barat, 2016  
*Table* *Sex Ratio by Village in Bontang Barat Subdistrict, 2016*

Kelurahan <i>Village</i>	Laki-Laki <i>Male</i>	Perempuan <i>Female</i>	Rasio Jenis Kelamin <i>Sex Ratio</i>
(1)	(2)	(3)	(4)
1. Kanaan	2 281	2 089	109,19
2. Gunung Telihan	6 787	6 245	108,68
3. Belimbing	6 012	5 603	107,30
<b>Bontang Barat</b>	<b>15 080</b>	<b>13 937</b>	<b>108,20</b>

Sumber/Source: Dinas Kependudukan dan Pencatatan Sipil Kota Bontang/*Population & Civil Registration Board of Bontang Municipality*

**Tabel 3.3** **Kepadatan Penduduk Menurut Kelurahan di Kecamatan Bontang Barat, 2016**  
**Density by Village in Bontang Barat Subdistrict, 2016**

	Kelurahan <i>Village</i>	Jumlah Penduduk <i>Population</i>	Luas (km <sup>2</sup> ) <i>Area (sq.km)</i>	Kepadatan Penduduk per km <sup>2</sup> <i>Population Density per sq.km</i>
	(1)	(2)	(3)	(4)
1.	Kanaan	4 370	6,0167	726,31
2.	Gunung Telihan	13 032	2,3031	5 658,46
3.	Belimbing	11 615	9,6141	1 208,12
<b>Bontang Barat</b>		<b>29 017</b>	<b>17,9339</b>	<b>1 618,00</b>

Sumber/Source: Dinas Kependudukan dan Pencatatan Sipil Kota Bontang/Population & Civil Registration Board of Bontang Municipality



POPULATION

**Tabel 3.4** Rata-Rata Jiwa per Kepala Keluarga Menurut Kelurahan di Kecamatan Bontang Barat, 2016  
*Average Soul per Head of Family by Village in Bontang Barat Subdistrict, 2016*

Kelurahan <i>Village</i>	Jumlah Penduduk <i>Population</i>	Jumlah Kepala Keluarga <i>Number of Family Heads</i>	Rata-Rata jiwa/KK <i>Average Soul per Head of Family</i>
(1)	(2)	(3)	(4)
1. Kanaan	4 370	1 315	3,32
2. Gunung Telihan	13 032	4 126	3,16
3. Belimbing	11 615	3 606	3,22
<b>Bontang Barat</b>	<b>29 017</b>	<b>9 047</b>	<b>3,21</b>

Sumber/Source: Dinas Kependudukan dan Pencatatan Sipil Kota Bontang/Population & Civil Registration Board of Bontang Municipality

**Tabel 3.5** Jumlah Kelahiran dan Kematian Menurut Kelurahan di Kecamatan Bontang Barat, 2016  
*Number of Birth and Dead by Village in Bontang Barat Subdistrict, 2016*

Kelurahan <i>Village</i>	Kelahiran <i>Number of Birth</i>	Kematian <i>Number of Dead</i>
(1)	(2)	(3)
1. Kanaan	32	11
2. Gunung Telihan	116	27
3. Belimbing	94	21
<b>Bontang Barat</b>	<b>242</b>	<b>59</b>

Sumber/Source: Dinas Kependudukan dan Pencatatan Sipil Kota Bontang/*Population & Civil Registration Board of Bontang Municipality*

POPULATION

**Tabel 3.6** Jumlah Migrasi Menurut Kelurahan di Kecamatan Bontang Barat, 2016  
**Table** Number of Migration by Village in Bontang Barat Subdistrict, 2016

Kelurahan Village	Datang Immigration	Pindah Emigration
(1)	(2)	(3)
1. Kanaan	140	170
2. Gunung Telihan	684	647
3. Belimbing	397	648
<b>Bontang Barat</b>	<b>1 221</b>	<b>1 465</b>

Sumber/Source: Dinas Kependudukan dan Pencatatan Sipil Kota Bontang/Population & Civil Registration Board of Bontang Municipality

### Jumlah Sekolah di Kecamatan Bontang Barat, 2016

Number of School in Bontang Barat Subdistrict, 2016

**TK/Sederajat**    **14**  
Kindergarten

**SMP/Sederajat**    **9**  
Junior High School

**SD/Sederajat**    **11**  
Primary School

**SMA/Sederajat**    **7**  
Junior High School





**Tabel 4.1** Jumlah Sekolah, Murid, Guru, dan Rasio Murid-Guru Taman Kanak-Kanak (TK)/ Raudhatul Athfal (RA) Swasta Menurut Kelurahan di Kecamatan Bontang Barat, 2016  
*Number of Schools, Pupils, Teachers, and Pupil-Teacher Ratio of Private Kindergarten by Village in Bontang Barat Subdistrict, 2016*

Kelurahan Village	Sekolah Schools	Murid Pupils			Guru Teachers			Rasio Murid- Guru Pupil-Teacher Ratio
		Laki-laki Male	Perem- puan Female	Jumlah Total	Laki-laki Male	Perem- puan Female	Jumlah Total	
(1)	(2)	(3)	(4)	(5)	(6)	(7)	(8)	(9)
1. Kanaan	1	29	30	59	-	5	5	12
2. Gunung Telihan	8	291	256	547	2	41	43	13
3. Belimbing	5	417	364	781	6	63	69	11
<b>Bontang Barat</b>	<b>14</b>	<b>737</b>	<b>650</b>	<b>1 387</b>	<b>8</b>	<b>109</b>	<b>117</b>	<b>12</b>

Sumber/Source: Dinas Pendidikan Kota Bontang/Education Service Office - Bontang Municipality

**Tabel 4.2** Jumlah Sekolah, Murid, Guru, dan Rasio Murid-Guru Sekolah Dasar (SD) Negeri Menurut Kelurahan di Kecamatan Bontang Barat, 2016  
*Number of Schools, Pupils, Teachers, and Pupil-Teacher Ratio of State Primary Schools by Village in Bontang Barat Subdistrict, 2016*

Kelurahan Village	Sekolah Schools	Murid Pupils			Guru Teachers			Rasio Murid- Guru Pupil-Teacher Ratio
		Laki-laki Male	Perem- puan Female	Jumlah Total	Laki-laki Male	Perem- puan Female	Jumlah Total	
(1)	(2)	(3)	(4)	(5)	(6)	(7)	(8)	(9)
1. Kanaan	2	314	301	615	9	24	33	19
2. Gunung Telihan	2	584	554	1 138	16	35	51	22
3. Belimbing	-	-	-	-	-	-	-	-
<b>Bontang Barat</b>	<b>4</b>	<b>898</b>	<b>855</b>	<b>1 753</b>	<b>25</b>	<b>59</b>	<b>84</b>	<b>21</b>

Sumber/Source: Dinas Pendidikan Kota Bontang/Education Service Office - Bontang Municipality

**Tabel 4.3** Jumlah Sekolah, Murid, Guru, dan Rasio Murid-Guru Sekolah Dasar (SD) Swasta Menurut Kelurahan di Kecamatan Bontang Barat, 2016  
*Number of Schools, Pupils, Teachers, and Pupil-Teacher Ratio of Private Primary Schools by Village in Bontang Barat Subdistrict, 2016*

Kelurahan Village	Sekolah Schools	Murid Pupils			Guru Teachers			Rasio Murid- Guru Pupil-Teacher Ratio
		Laki-laki Male	Perem- puan Female	Jumlah Total	Laki-laki Male	Perem- puan Female	Jumlah Total	
(1)	(2)	(3)	(4)	(5)	(6)	(7)	(8)	(9)
1. Kanaan	-	-	-	-	-	-	-	-
2. Gunung Telihan	3	309	263	572	8	27	35	16
3. Belimbing	4	1 113	998	2 111	35	92	127	17
<b>Bontang Barat</b>	<b>7</b>	<b>1 422</b>	<b>1 261</b>	<b>2 683</b>	<b>43</b>	<b>119</b>	<b>162</b>	<b>17</b>

Sumber/Source: Dinas Pendidikan Kota Bontang/Education Service Office - Bontang Municipality



**Tabel 4.4** Jumlah Sekolah, Murid, Guru, dan Rasio Murid-Guru Sekolah Menengah Pertama (SMP) Negeri Menurut Kelurahan di Kecamatan Bontang Barat, 2016  
*Number of Schools, Pupils, Teachers, and Pupil-Teacher Ratio State Junior High Schools by Village in Bontang Barat Subdistrict, 2016*

Kelurahan Village	Sekolah Schools	Murid Pupils			Guru Teachers			Rasio Murid- Guru Pupil-Teacher Ratio
		Laki-laki Male	Perem- puan Female	Jumlah Total	Laki-laki Male	Perem- puan Female	Jumlah Total	
(1)	(2)	(3)	(4)	(5)	(6)	(7)	(8)	(9)
1. Kanaan	-	-	-	-	-	-	-	-
2. Gunung Telihan	1	219	262	481	12	18	30	16
3. Belimbing	1	312	338	650	7	34	41	16
<b>Bontang Barat</b>	<b>2</b>	<b>531</b>	<b>600</b>	<b>1 131</b>	<b>19</b>	<b>52</b>	<b>71</b>	<b>16</b>

Sumber/Source: Dinas Pendidikan Kota Bontang/Education Service Office - Bontang Municipality

**Tabel 4.5** Jumlah Sekolah, Murid, Guru, dan Rasio Murid-Guru Sekolah Menengah Pertama (SMP) Swasta Menurut Kelurahan di Kecamatan Bontang Barat, 2016  
*Number of Schools, Pupils, Teachers, and Pupil-Teacher Ratio Private Junior High Schools by Village in Bontang Barat Subdistrict, 2016*

Kelurahan Village	Sekolah Schools	Murid Pupils			Guru Teachers			Rasio Murid- Guru Pupil-Teacher Ratio
		Laki-laki Male	Perem- puan Female	Jumlah Total	Laki-laki Male	Perem- puan Female	Jumlah Total	
(1)	(2)	(3)	(4)	(5)	(6)	(7)	(8)	(9)
1. Kanaan	1	30	25	55	2	6	8	7
2. Gunung Telihan	1	89	73	162	2	8	10	16
3. Belimbing	3	503	500	1 003	35	31	66	15
<b>Bontang Barat</b>	<b>5</b>	<b>622</b>	<b>598</b>	<b>1 220</b>	<b>39</b>	<b>45</b>	<b>84</b>	<b>15</b>

Sumber/Source: Dinas Pendidikan Kota Bontang/Education Service Office - Bontang Municipality

**Tabel 4.6** Jumlah Sekolah, Murid, Guru, dan Rasio Murid-Guru Madrasah Tsanawiyah (MTs) Swasta Menurut Kelurahan di Kecamatan Bontang Barat, 2016  
*Number of Schools, Pupils, Teachers, and Pupil-Teacher Ratio Private Madrasah Tsanawiyah (MTs) by Village in Bontang Barat Subdistrict, 2016*

Kelurahan Village	Sekolah Schools	Murid Pupils			Guru Teachers			Rasio Murid- Guru Pupil-Teacher Ratio
		Laki-laki Male	Perem- puan Female	Jumlah Total	Laki-laki Male	Perem- puan Female	Jumlah Total	
(1)	(2)	(3)	(4)	(5)	(6)	(7)	(8)	(9)
1. Kanaan	-	-	-	-	-	-	-	-
2. Gunung Telihan	1	87	75	162	4	9	13	12
3. Belimbing	1	11	10	21	4	6	10	2
<b>Bontang Barat</b>	<b>2</b>	<b>98</b>	<b>85</b>	<b>183</b>	<b>8</b>	<b>15</b>	<b>23</b>	<b>8</b>

Sumber/Source: Kementerian Agama Kota Bontang/Religious Ministry of Bontang Municipality

**Tabel 4.7** Jumlah Sekolah, Murid, Guru, dan Rasio Murid-Guru Sekolah Menengah Atas (SMA) Negeri Menurut Kelurahan di Kecamatan Bontang Barat, 2016  
*Number of Schools, Pupils, Teachers, and Pupil-Teacher Ratio State Senior High Schools by Village in Bontang Barat Subdistrict, 2016*

Kelurahan Village	Sekolah Schools	Murid Pupils			Guru Teachers			Rasio Murid- Guru Pupil-Teacher Ratio
		Laki-laki Male	Perem- puan Female	Jumlah Total	Laki-laki Male	Perem- puan Female	Jumlah Total	
(1)	(2)	(3)	(4)	(5)	(6)	(7)	(8)	(9)
1. Kanaan	-	-	-	-	-	-	-	-
2. Gunung Telihan	-	-	-	-	-	-	-	-
3. Belimbing	1	173	453	626	19	18	37	17
<b>Bontang Barat</b>	<b>1</b>	<b>173</b>	<b>453</b>	<b>626</b>	<b>19</b>	<b>18</b>	<b>37</b>	<b>17</b>

Sumber/Source: Dinas Pendidikan Kota Bontang/Education Service Office - Bontang Municipality

**Tabel 4.8** Jumlah Sekolah, Murid, Guru, dan Rasio Murid-Guru Sekolah Menengah Atas (SMA) Swasta Menurut Kelurahan di Kecamatan Bontang Barat, 2016  
*Number of Schools, Pupils, Teachers, and Pupil-Teacher Ratio Private Senior High Schools by Village in Bontang Barat Subdistrict, 2016*

Kelurahan Village	Sekolah Schools	Murid Pupils			Guru Teachers			Rasio Murid- Guru Pupil-Teacher Ratio
		Laki-laki Male	Perem- puan Female	Jumlah Total	Laki-laki Male	Perem- puan Female	Jumlah Total	
(1)	(2)	(3)	(4)	(5)	(6)	(7)	(8)	(9)
1. Kanaan	-	-	-	-	-	-	-	-
2. Gunung Telihan	-	-	-	-	-	-	-	-
3. Belimbing	2	387	475	862	47	21	68	13
<b>Bontang Barat</b>	<b>2</b>	<b>387</b>	<b>475</b>	<b>862</b>	<b>47</b>	<b>21</b>	<b>68</b>	<b>13</b>

Sumber/Source: Dinas Pendidikan Kota Bontang/Education Service Office - Bontang Municipality

**Tabel 4.9** Jumlah Sekolah, Murid, Guru, dan Rasio Murid-Guru Sekolah Menengah Kejuruan (SMK) Negeri Menurut Kelurahan di Kecamatan Bontang Barat, 2016  
*Number of Schools, Pupils, Teachers, and Pupil-Teacher Ratio State Vocational High Schools by Village in Bontang Barat Subdistrict, 2016*

Kelurahan Village	Sekolah Schools	Murid Pupils			Guru Teachers			Rasio Murid- Guru Pupil-Teacher Ratio
		Laki-laki Male	Perem- puan Female	Jumlah Total	Laki-laki Male	Perem- puan Female	Jumlah Total	
(1)	(2)	(3)	(4)	(5)	(6)	(7)	(8)	(9)
1. Kanaan	-	-	-	-	-	-	-	-
2. Gunung Telihan	1	261	30	291	13	20	33	9
3. Belimbing	-	-	-	-	-	-	-	-
<b>Bontang Barat</b>	<b>1</b>	<b>261</b>	<b>30</b>	<b>291</b>	<b>13</b>	<b>20</b>	<b>33</b>	<b>9</b>

Sumber/Source: Dinas Pendidikan Kota Bontang/Education Service Office - Bontang Municipality

**Tabel 4.10** Jumlah Sekolah, Murid, Guru, dan Rasio Murid-Guru Sekolah Menengah Kejuruan (SMK) Swasta Menurut Kelurahan di Kecamatan Bontang Barat, 2016  
*Number of Schools, Pupils, Teachers, and Pupil-Teacher Ratio Private Vocational High Schools by Village in Bontang Barat Subdistrict, 2016*

Kelurahan Village	Sekolah Schools	Murid Pupils			Guru Teachers			Rasio Murid- Guru Pupil-Teacher Ratio
		Laki-laki Male	Perem- puan Female	Jumlah Total	Laki-laki Male	Perem- puan Female	Jumlah Total	
(1)	(2)	(3)	(4)	(5)	(6)	(7)	(8)	(9)
1. Kanaan	-	-	-	-	-	-	-	-
2. Gunung Telihan	2	126	67	193	6	12	18	11
3. Belimbing	1	60	47	107	5	3	8	13
<b>Bontang Barat</b>	<b>3</b>	<b>186</b>	<b>114</b>	<b>300</b>	<b>11</b>	<b>15</b>	<b>26</b>	<b>12</b>

Sumber/Source: Dinas Pendidikan Kota Bontang/Education Service Office - Bontang Municipality

**Tabel 4.11** Jumlah Peserta Ujian, Kelulusan, dan Persentase Kelulusan Sekolah Dasar (SD) Negeri Menurut Kelurahan di Kecamatan Bontang Barat, 2016  
*Number of Exam Participants, Graduates, and Graduation Percentage of State Primary Schools by Village in Bontang Barat Subdistrict, 2016*

Kelurahan <i>Village</i>	Peserta Ujian <i>Exam Participants</i>			Kelulusan <i>Graduate</i>			Persentase Kelulusan <i>Graduation Percentage</i>
	Laki-laki <i>Male</i>	Perem- puan <i>Female</i>	Jumlah <i>Total</i>	Laki-laki <i>Male</i>	Perem- puan <i>Female</i>	Jumlah <i>Total</i>	
(1)	(2)	(3)	(4)	(5)	(6)	(7)	(8)
1. Kanaan	50	45	95	50	45	95	100,00
2. Gunung Telihan	103	75	178	103	75	178	100,00
3. Belimbing	-	-	-	-	-	-	-
<b>Bontang Barat</b>	<b>153</b>	<b>120</b>	<b>273</b>	<b>153</b>	<b>120</b>	<b>273</b>	<b>100,00</b>

Sumber/Source: Dinas Pendidikan Kota Bontang/Education Service Office - Bontang Municipality



**Tabel 4.12** Jumlah Peserta Ujian, Kelulusan, dan Persentase Kelulusan Sekolah Dasar (SD) Swasta Menurut Kelurahan di Kecamatan Bontang Barat, 2016  
*Number of Exam Participants, Graduates, and Graduation Percentage of Private Primary Schools by Village in Bontang Barat Subdistrict, 2016*

Kelurahan Village	Peserta Ujian Exam Participants			Kelulusan Graduate			Persentase Kelulusan Graduation Percentage
	Laki-laki Male	Perem- puan Female	Jumlah Total	Laki-laki Male	Perem- puan Female	Jumlah Total	
(1)	(2)	(3)	(4)	(5)	(6)	(7)	(8)
1. Kanaan	-	-	-	-	-	-	-
2. Gunung Telihan	42	46	88	42	46	88	100,00
3. Belimbing	177	174	351	177	174	351	100,00
<b>Bontang Barat</b>	<b>219</b>	<b>220</b>	<b>439</b>	<b>219</b>	<b>220</b>	<b>439</b>	<b>100,00</b>

Sumber/Source: Dinas Pendidikan Kota Bontang/Education Service Office - Bontang Municipality

**Tabel 4.13** Jumlah Peserta Ujian, Kelulusan, dan Persentase Kelulusan Sekolah Menengah Pertama (SMP) Negeri Menurut Kelurahan di Kecamatan Bontang Barat, 2016  
*Number of Exam Participants, Graduates, and Graduation Percentage of State Junior High Schools by Village in Bontang Barat Subdistrict, 2016*

Kelurahan <i>Village</i>	Peserta Ujian <i>Exam Participants</i>			Kelulusan <i>Graduate</i>			Persentase Kelulusan <i>Graduation Percentage</i>
	Laki-laki <i>Male</i>	Perem- puan <i>Female</i>	Jumlah <i>Total</i>	Laki-laki <i>Male</i>	Perem- puan <i>Female</i>	Jumlah <i>Total</i>	
(1)	(2)	(3)	(4)	(5)	(6)	(7)	(8)
1. Kanaan	-	-	-	-	-	-	-
2. Gunung Telihan	74	76	150	74	76	150	100,00
3. Belimbing	115	127	242	115	127	242	100,00
<b>Bontang Barat</b>	<b>189</b>	<b>203</b>	<b>392</b>	<b>189</b>	<b>203</b>	<b>392</b>	<b>100,00</b>

Sumber/Source: Dinas Pendidikan Kota Bontang/Education Service Office - Bontang Municipality

**Tabel 4.14** Jumlah Peserta Ujian, Kelulusan, dan Persentase Kelulusan Sekolah Menengah Pertama (SMP) Swasta Menurut Kelurahan di Kecamatan Bontang Barat, 2016  
*Number of Exam Participants, Graduates, and Graduation Percentage of Private Junior High Schools by Village in Bontang Barat Subdistrict, 2016*

Kelurahan Village	Peserta Ujian Exam Participants			Kelulusan Graduate			Persentase Kelulusan Graduation Percentage
	Laki-laki Male	Perem- puan Female	Jumlah Total	Laki-laki Male	Perem- puan Female	Jumlah Total	
(1)	(2)	(3)	(4)	(5)	(6)	(7)	(8)
1. Kanaan	14	16	30	14	16	30	100,00
2. Gunung Telihan	25	15	40	25	15	40	100,00
3. Belimbing	191	199	390	191	199	390	100,00
<b>Bontang Barat</b>	<b>230</b>	<b>230</b>	<b>460</b>	<b>230</b>	<b>230</b>	<b>460</b>	<b>100,00</b>

Sumber/Source: Dinas Pendidikan Kota Bontang/Education Service Office - Bontang Municipality

**Tabel 4.15** Jumlah Peserta Ujian, Kelulusan, dan Persentase Kelulusan Madrasah Tsanawiyah (MTs) Swasta Menurut Kelurahan di Kecamatan Bontang Barat, 2016  
*Number of Exam Participants, Graduates, and Graduation Percentage of Private Madrasah Tsanawiyah (MTs) by Village in Bontang Barat Subdistrict, 2016*

Kelurahan <i>Village</i>	Peserta Ujian <i>Exam Participants</i>			Kelulusan <i>Graduate</i>			Persentase Kelulusan <i>Graduation Percentage</i>
	Laki-laki <i>Male</i>	Perem- puan <i>Female</i>	Jumlah <i>Total</i>	Laki-laki <i>Male</i>	Perem- puan <i>Female</i>	Jumlah <i>Total</i>	
(1)	(2)	(3)	(4)	(5)	(6)	(7)	(8)
1. Kanaan	-	-	-	-	-	-	-
2. Gunung Telihan	28	25	53	28	25	53	100,00
3. Belimbing	-	-	-	-	-	-	-
<b>Bontang Barat</b>	<b>28</b>	<b>25</b>	<b>53</b>	<b>28</b>	<b>25</b>	<b>53</b>	<b>100,00</b>

Sumber/Source: Dinas Pendidikan Kota Bontang/Education Service Office - Bontang Municipality

**Tabel 4.16** Jumlah Peserta Ujian, Kelulusan, dan Persentase Kelulusan Sekolah Menengah Atas (SMA) Negeri Menurut Kelurahan di Kecamatan Bontang Barat, 2016  
*Number of Exam Participants, Graduates, and Graduation Percentage of State Senior High Schools by Village in Bontang Barat Subdistrict, 2016*

Kelurahan Village	Peserta Ujian Exam Participants			Kelulusan Graduate			Persentase Kelulusan Graduation Percentage
	Laki-laki Male	Perem- puan Female	Jumlah Total	Laki-laki Male	Perem- puan Female	Jumlah Total	
(1)	(2)	(3)	(4)	(5)	(6)	(7)	(8)
1. Kanaan	-	-	-	-	-	-	-
2. Gunung Telihan	-	-	-	-	-	-	-
3. Belimbing	64	128	192	64	128	192	100,00
<b>Bontang Barat</b>	<b>64</b>	<b>128</b>	<b>192</b>	<b>64</b>	<b>128</b>	<b>192</b>	<b>100,00</b>

Sumber/Source: Dinas Pendidikan Kota Bontang/Education Service Office - Bontang Municipality

**Tabel 4.17** Jumlah Peserta Ujian, Kelulusan, dan Persentase Kelulusan Sekolah Menengah Atas (SMA) Swasta Menurut Kelurahan di Kecamatan Bontang Barat, 2016  
*Number of Exam Participants, Graduates, and Graduation Percentage of Private Senior High Schools by Village in Bontang Barat Subdistrict, 2016*

Kelurahan <i>Village</i>	Peserta Ujian <i>Exam Participants</i>			Kelulusan <i>Graduate</i>			Persentase Kelulusan <i>Graduation Percentage</i>
	Laki-laki <i>Male</i>	Perem- puan <i>Female</i>	Jumlah <i>Total</i>	Laki-laki <i>Male</i>	Perem- puan <i>Female</i>	Jumlah <i>Total</i>	
(1)	(2)	(3)	(4)	(5)	(6)	(7)	(8)
1. Kanaan	-	-	-	-	-	-	-
2. Gunung Telihan	-	-	-	-	-	-	-
3. Belimbing	162	155	317	162	155	317	100,00
<b>Bontang Barat</b>	<b>162</b>	<b>155</b>	<b>317</b>	<b>162</b>	<b>155</b>	<b>317</b>	<b>100,00</b>

Sumber/Source: Dinas Pendidikan Kota Bontang/Education Service Office - Bontang Municipality

**Tabel 4.18** Jumlah Peserta Ujian, Kelulusan, dan Persentase Kelulusan Sekolah Menengah Kejuruan (SMK) Negeri Menurut Kelurahan di Kecamatan Bontang Barat, 2016  
*Number of Exam Participants, Graduates, and Graduation Percentage of State Vocational High Schools by Village in Bontang Barat Subdistrict, 2016*

Kelurahan Village	Peserta Ujian Exam Participants			Kelulusan Graduate			Persentase Kelulusan Graduation Percentage
	Laki-laki Male	Perem- puan Female	Jumlah Total	Laki-laki Male	Perem- puan Female	Jumlah Total	
(1)	(2)	(3)	(4)	(5)	(6)	(7)	(8)
1. Kanaan	-	-	-	-	-	-	-
2. Gunung Telihan	69	12	81	69	12	81	100,00
3. Belimbing	-	-	-	-	-	-	-
<b>Bontang Barat</b>	<b>69</b>	<b>12</b>	<b>81</b>	<b>69</b>	<b>12</b>	<b>81</b>	<b>100,00</b>

Sumber/Source: Dinas Pendidikan Kota Bontang/Education Service Office - Bontang Municipality

**Tabel 4.19** Jumlah Peserta Ujian, Kelulusan, dan Persentase Kelulusan Sekolah Menengah Kejuruan (SMK) Swasta Menurut Kelurahan di Kecamatan Bontang Barat, 2016  
*Number of Exam Participants, Graduates, and Graduation Percentage of Private Vocational High Schools by Village in Bontang Barat Subdistrict, 2016*

Kelurahan <i>Village</i>	Peserta Ujian <i>Exam Participants</i>			Kelulusan <i>Graduate</i>			Persentase Kelulusan <i>Graduation Percentage</i>
	Laki-laki <i>Male</i>	Perem- puan <i>Female</i>	Jumlah <i>Total</i>	Laki-laki <i>Male</i>	Perem- puan <i>Female</i>	Jumlah <i>Total</i>	
(1)	(2)	(3)	(4)	(5)	(6)	(7)	(8)
1. Kanaan	-	-	-	-	-	-	-
2. Gunung Telihan	49	36	85	49	36	85	100,00
3. Belimbing	7	8	15	7	8	15	100,00
<b>Bontang Barat</b>	<b>56</b>	<b>44</b>	<b>100</b>	<b>56</b>	<b>44</b>	<b>100</b>	<b>100,00</b>

Sumber/Source: Dinas Pendidikan Kota Bontang/Education Service Office - Bontang Municipality



**Tabel 4.20** Jumlah Fasilitas Kesehatan Menurut Kelurahan di Kecamatan Bontang Barat, 2016  
**Table** *Number of Health Facilities by Village in Bontang Barat Subdistrict, 2016*

Kelurahan <i>Village</i>	Rumah Sakit <i>Hospital</i>	Rumah Bersalin <i>Maternity Hospital</i>	Puskesmas <i>Public Health Center</i>	Posyandu <i>Maternal &amp; Child Health Center</i>
(1)	(2)	(3)	(4)	(5)
1. Kanaan	-	-	1	2
2. Gunung Telihan	1	-	-	8
3. Belimbing	1	-	-	11
<b>Bontang Barat</b>	<b>2</b>	<b>-</b>	<b>1</b>	<b>21</b>

Sumber/Source: Dinas Kesehatan dan Keluarga Berencana Kota Bontang/Health Service and Family Planning Office of Bontang Municipality

Lanjutan Tabel/*Continued Table 4.20*

Kelurahan <i>Village</i>	Klinik/Balai Kesehatan <i>Clinic/Health Center</i>	Polindes <i>Village Maternity</i>	Puskesmas Pembantu <i>Subsidiary of Public Health Center</i>	Praktek Dokter Keluarga <i>Family Doctor</i>
(1)	(6)	(7)	(8)	(9)
1. Kanaan	-	-	-	-
2. Gunung Telihan	2	-	-	2
3. Belimbing	-	-	-	1
<b>Bontang Barat</b>	<b>2</b>	<b>-</b>	<b>-</b>	<b>3</b>

Sumber/*Source*: Dinas Kesehatan dan Keluarga Berencana Kota Bontang/*Health Service and Family Planning Office of Bontang Municipality*

**Tabel 4.21** Jumlah Tenaga Kesehatan Menurut Kelurahan di Kecamatan Bontang Barat, 2016  
**Table** *Number of Health Personnel by Village in Bontang Barat Subdistrict, 2016*

Kelurahan <i>Village</i>	Tenaga Kesehatan <i>Health Personnel</i>			
	Dokter Spesialis <i>Specialist Doctors</i>	Dokter Umum <i>Generalist Doctors</i>	Dokter Gigi <i>Dentist</i>	Tenaga Keperawatan <i>Nursing Personnel</i>
(1)	(2)	(3)	(4)	(5)
1. Kanaan	-	4	1	11
2. Gunung Telihan	20	13	3	224
3. Belimbing	1	15	4	53
<b>Bontang Barat</b>	<b>21</b>	<b>32</b>	<b>8</b>	<b>288</b>

Sumber/Source: Dinas Kesehatan dan Keluarga Berencana Kota Bontang/Health Service and Family Planning Office of Bontang Municipality

Lanjutan Tabel/*Continued Table 4.21*

Kelurahan <i>Village</i>	Tenaga Kesehatan <i>Health Personnel</i>		
	Tenaga Kebidanan <i>Midwifery Personnel</i>	Tenaga Kefarmasian <i>Pharmacy Personnel</i>	Ahli Gizi <i>Nutritionist</i>
(1)	(6)	(7)	(8)
1. Kanaan	4	3	1
2. Gunung Telihan	32	31	5
3. Belimbing	23	6	1
<b>Bontang Barat</b>	<b>59</b>	<b>40</b>	<b>7</b>

Sumber/*Source*: Dinas Kesehatan dan Keluarga Berencana Kota Bontang/*Health Service and Family Planning Office of Bontang Municipality*

**Tabel 4.22** Jumlah Apotek, Toko Obat, dan Gudang Farmasi Menurut Kelurahan di Kecamatan Bontang Barat, 2016  
*Number of Chemist, Drugstore, and Pharmacy Warehouse by Village in Bontang Barat Subdistrict, 2016*

Kelurahan <i>Village</i>	Apotek <i>Chemist</i>	Toko Obat <i>Drugstore</i>	Gudang Farmasi <i>Pharmacy Warehouse</i>
(1)	(2)	(3)	(4)
1. Kanaan	-	-	-
2. Gunung Telihan	2	-	-
3. Belimbing	2	-	-
<b>Bontang Barat</b>	<b>4</b>	<b>-</b>	<b>-</b>

Sumber/*Source*: Dinas Kesehatan dan Keluarga Berencana Kota Bontang/*Health Service and Family Planning Office of Bontang Municipality*

**Tabel 4.23** Jumlah Penyandang Cacat Menurut Kelurahan di Kecamatan Bontang Barat, 2016  
**Table** *Number of Persons with Disabilities by Village in Bontang Barat Subdistrict, 2016*

Kelurahan <i>Village</i>	Tuna Daksa/ Cacat Fisik <i>Physical Disability</i>	Tuna Netra <i>Blind</i>	Tuna Rungu/ Wicara <i>Deaf/Speech Impaired</i>	Tuna Grahita/ Cacat Mental <i>Mentally Disability</i>
(1)	(2)	(3)	(4)	(5)
1. Kanaan	1	-	1	-
2. Gunung Telihan	5	-	2	4
3. Belimbing	1	-	-	-
<b>Bontang Barat</b>	<b>7</b>	<b>-</b>	<b>3</b>	<b>4</b>

Sumber/Source: Dinas Kependudukan dan Pencatatan Sipil Kota Bontang/Population & Civil Registration Board of Bontang Municipality

Lanjutan Tabel/*Continued Table 4.23*

Kelurahan <i>Village</i>	Tuna Daksa dan Grahita <i>Physical and Mentally Disability</i>	Lainnya <i>Others</i>	Jumlah <i>Total</i>
(1)	(6)	(7)	(8)
1. Kanaan	2	-	4
2. Gunung Telihan	4	8	23
3. Belimbing	-	4	5
<b>Bontang Barat</b>	<b>6</b>	<b>12</b>	<b>32</b>

Sumber/*Source*: Dinas Kependudukan dan Pencatatan Sipil Kota Bontang/*Population & Civil Registration Board of Bontang Municipality*

**Tabel 4.24** Jumlah Perangkat Keluarga Berencana Menurut Kelurahan di Kecamatan Bontang Barat, 2016  
**Table** *Number of Family Planning Devices by Village in Bontang Barat Subdistrict, 2016*

Kelurahan <i>Village</i>	PPKBK	Sub PPKBK	Kelompok UPPKS	Anggota UPPKS
(1)	(2)	(3)	(4)	(5)
1. Kanaan	1	12	1	10
2. Gunung Telihan	1	30	2	12
3. Belimbing	1	51	1	18
<b>Bontang Barat</b>	<b>3</b>	<b>93</b>	<b>4</b>	<b>40</b>

Sumber/Source: Dinas Kesehatan dan Keluarga Berencana Kota Bontang/*Health Service and Family Planning Office of Bontang Municipality*



**Tabel 4.25** Jumlah Pasangan Usia Subur dan Peserta KB Aktif Menurut Kelurahan di Kecamatan Bontang Barat, 2016  
*Number of Eligible Couples and Family Planning Active Participants by Village in Bontang Barat Subdistrict, 2016*

Kelurahan <i>Village</i>	Jumlah PUS <i>Eligible Couples</i>	Peserta KB Aktif <i>Family Planning Participants</i>			
		IUD	MOW	MOP	Kondom <i>Condom</i>
(1)	(2)	(3)	(4)	(5)	(6)
1. Kanaan	664	82	24	5	5
2. Gunung Telihan	2 075	213	69	18	53
3. Belimbing	2 116	486	148	3	157
<b>Bontang Barat</b>	<b>4 855</b>	<b>781</b>	<b>241</b>	<b>26</b>	<b>215</b>

Sumber/Source: Dinas Kesehatan dan Keluarga Berencana Kota Bontang/Health Service and Family Planning Office of Bontang Municipality

Lanjutan Tabel/*Continued Table 4.25*

Kelurahan <i>Village</i>	Peserta KB Aktif <i>Family Planning Participants</i>			Jumlah <i>Total</i>
	Implan <i>Implants</i>	Suntikan <i>Injection</i>	Pil <i>Pill</i>	
(1)	(7)	(8)	(9)	(10)
1. Kanaan	55	108	83	362
2. Gunung Telihan	153	884	447	1 837
3. Belimbing	16	314	245	1 369
<b>Bontang Barat</b>	<b>224</b>	<b>1 306</b>	<b>775</b>	<b>3 568</b>

Sumber/*Source*: Dinas Kesehatan dan Keluarga Berencana Kota Bontang/*Health Service and Family Planning Office of Bontang Municipality*

**Tabel 4.26** Pencapaian Akseptor Baru Menurut Kelurahan dan Metode Kontrasepsi di Kecamatan Bontang Barat, 2016  
**Table** *Realization of New Acceptor by Village and Contraception Method in Bontang Barat Subdistrict, 2016*

Kelurahan Village	IUD	MOW	MOP	Kondom Condom
(1)	(2)	(3)	(4)	(5)
1. Kanaan	18	-	2	19
2. Gunung Telihan	2	-	-	4
3. Belimbing	164	83	1	-
<b>Bontang Barat</b>	<b>184</b>	<b>83</b>	<b>3</b>	<b>23</b>

Sumber/Source: Dinas Kesehatan dan Keluarga Berencana Kota Bontang/Health Service and Family Planning Office of Bontang Municipality

Lanjutan Tabel/*Continued Table 4.26*

Kelurahan <i>Village</i>	Implan <i>Implants</i>	Suntikan <i>Injection</i>	Pil <i>Pill</i>	Jumlah <i>Total</i>
(1)	(6)	(7)	(8)	(9)
1. Kanaan	19	50	8	116
2. Gunung Telihan	2	45	24	77
3. Belimbing	12	96	19	375
<b>Bontang Barat</b>	<b>33</b>	<b>191</b>	<b>51</b>	<b>568</b>

Sumber/*Source*: Dinas Kesehatan dan Keluarga Berencana Kota Bontang/*Health Service and Family Planning Office of Bontang Municipality*

**Tabel 4.27** Jumlah Penduduk Menurut Kelurahan dan Agama yang Dianut di Kecamatan Bontang Barat, 2016  
**Table** Population by Village and Religion in Bontang Barat Subdistrict, 2016

Kelurahan Village	Islam Islam	Protestan Christian	Katolik Catholic	Hindu Hindu	Budha Buddha	Lainnya Other
(1)	(2)	(3)	(4)	(5)	(6)	(7)
1. Kanaan	997	3 020	353	-	-	-
2. Gunung Telihan	8 411	3 835	773	13	-	-
3. Belimbing	10 453	869	250	36	6	1
<b>Bontang Barat</b>	<b>19 861</b>	<b>7 724</b>	<b>1 376</b>	<b>49</b>	<b>6</b>	<b>1</b>

Sumber/Source: Dinas Kependudukan dan Pencatatan Sipil Kota Bontang/Population & Civil Registration Board of Bontang Municipality

**Tabel 4.28** Jumlah Tempat Peribadatan Menurut Kelurahan di Kecamatan Bontang Barat, 2016  
**Table** *Number of Worship Facilities by Village in Bontang Barat Subdistrict, 2016*

Kelurahan <i>Village</i>	Masjid <i>Mosque</i>	Mushola <i>Mushola</i>	Gereja Protestan <i>Christian Church</i>	Gereja Katholik <i>Catholic Church</i>	Pura <i>Temple</i>	Vihara <i>Vihara</i>
(1)	(2)	(3)	(4)	(5)	(6)	(7)
1. Kanaan	2	-	4	1	-	-
2. Gunung Telihan	6	5	14	-	-	-
3. Belimbing	7	6	-	-	-	-
<b>Bontang Barat</b>	<b>15</b>	<b>11</b>	<b>18</b>	<b>1</b>	<b>-</b>	<b>-</b>

Sumber/Source: Kantor Urusan Agama Bontang Barat/Religious Affairs office of Bontang Barat

**Tabel 4.29** **Nikah, Talak dan Cerai, serta Rujuk Menurut Kelurahan di Kecamatan Bontang Barat, 2016**  
**Number of Marriages, Divorces, and Reconciliations by Village in Bontang Barat Subdistrict, 2016**

Kelurahan Village	Nikah Marriages	Talak Divorces	Cerai Divorces	Rujuk Reconciliations
(1)	(2)	(3)	(4)	(5)
1. Kanaan	5	...	...	-
2. Gunung Telihan	52	...	...	1
3. Belimbing	55	...	...	-
<b>Bontang Barat</b>	<b>112</b>	<b>13</b>	<b>24</b>	<b>1</b>

Sumber/Source: Kantor Urusan Agama Bontang Barat/Religious Affairs office of Bontang Barat

**Tabel 4.30** Jumlah Pernikahan Menurut Kelurahan dan Walinya di Kecamatan Bontang Barat, 2016  
**Table** *Number of Marriages by Village and Guardians in Bontang Barat Subdistrict, 2016*

Kelurahan <i>Village</i>	Wali Nasab	Wali Hakim	Jumlah <i>Total</i>
(1)	(2)	(3)	(4)
1. Kanaan	3	2	5
2. Gunung Telihan	42	10	52
3. Belimbing	47	8	55
<b>Bontang Barat</b>	<b>92</b>	<b>20</b>	<b>112</b>

Sumber/Source: Kantor Urusan Agama Bontang Barat/Religious Affairs office of Bontang Barat



**Tabel 4.31** Jumlah Lokasi dan Luas Wakaf Tanah Menurut Kelurahan dan Jenis Akta Wakaf di Kecamatan Bontang Barat, 2016  
**Table** *Number of Location and Area of Land Wakaf by Village and Type of Deed of Wakaf in Bontang Barat Subdistrict, 2016*

Kelurahan <i>Village</i>	Sudah Bersertifikat <i>Already Certified</i>		Belum Bersertifikat <i>Not Certified</i>	
	Lokasi <i>Location</i>	Luas (m <sup>2</sup> ) <i>Area (sq.m)</i>	Lokasi <i>Location</i>	Luas (m <sup>2</sup> ) <i>Area (sq.m)</i>
	(1)	(2)	(4)	(5)
1. Kanaan	1	510	-	-
2. Gunung Telihan	5	11 422	1	445
3. Belimbing	6	2 074	7	20.669
<b>Bontang Barat</b>	<b>12</b>	<b>14 006</b>	<b>8</b>	<b>21 114</b>

Sumber/Source: Kantor Urusan Agama Bontang Barat/Religious Affairs office of Bontang Barat

# PERTANIAN

AGRICULTURE

# 5

BAB  
Chapter

## Produksi Tanaman Sayur-Sayuran di Kecamatan Bontang Barat, 2016

Production of Vegetables in Bontang Barat Subdistrict, 2016



882 Kuintal  
quintal



265 Kuintal  
quintal



192 Kuintal  
quintal



192 Kuintal  
quintal



159 Kuintal  
quintal





**Tabel 5.1 Luas Panen Padi di Kecamatan Bontang Barat (ha), 2016**  
**Table Harvested Area of Paddy in Bontang Barat Subdistrict (ha), 2016**

Jenis Tanaman <i>Kind of Plant</i>	Luas Panen <i>Harvested Area</i>
(1)	(2)
Padi Sawah/ <i>Wetland Paddy</i>	3
Padi Ladang/ <i>Dryland Paddy</i>	-

Sumber/Source: Dinas Ketahanan Pangan, Perikanan, dan Pertanian Kota Bontang/*Food Security, Fishery, and Agriculture Department of Bontang Municipality*

**Tabel 5.2** Luas Panen Tanaman Palawija Menurut Jenis Tanaman di Kecamatan Bontang Barat (ha), 2016  
*Harvested Area of Secondary Crops by Kind of Plant in Bontang Barat Subdistrict (ha), 2016*

Jenis Tanaman <i>Kind of Plant</i>	Luas Panen <i>Harvested Area</i>
(1)	(2)
Jagung/ <i>Maize</i>	-
Kedelai/ <i>Soybeans</i>	-
Kacang tanah/ <i>Peanuts</i>	3
Kacang hijau/ <i>Mungbeans</i>	-
Ubi kayu/ <i>Cassavas</i>	2
Ubi jalar/ <i>Sweet potatoes</i>	3

Sumber/Source: Dinas Ketahanan Pangan, Perikanan, dan Pertanian Kota Bontang/*Food Security, Fishery, and Agriculture Department of Bontang Municipality*

**Tabel 5.3** **Produksi Tanaman Sayuran Menurut Jenis Tanaman di Kecamatan Bontang Barat (kuintal), 2016**  
**Production of Vegetables by Kind of Plant in Bontang Barat Subdistrict (quintal), 2016**

Jenis Tanaman <i>Kind of Plant</i>	Produksi <i>Production</i>
(1)	(2)
Bawang daun/ <i>Green onion</i>	92
Kembang kol/ <i>Cauliflower</i>	-
Petsai/sawi/ <i>Chinese cabbage</i>	265
Kacang panjang/ <i>Yarldlong bean</i>	102
Cabai besar/ <i>Chili</i>	141
Cabai rawit/ <i>Chili</i>	152
Jamur/ <i>Mushroom</i>	882
Tomat/ <i>Tomato</i>	56
Terung/ <i>Eggplant</i>	159
Buncis/ <i>Green bean</i>	144
Ketimun/ <i>Cucumber</i>	70
Kangkung/ <i>Water spinach</i>	192
Bayam/ <i>Spinach</i>	192
Melinjo/ <i>Melinjo</i>	4
Petai/ <i>Twisted cluster bean</i>	8

Sumber/*Source*: Dinas Ketahanan Pangan, Perikanan, dan Pertanian Kota Bontang/*Food Security, Fishery, and Agriculture Department of Bontang Municipality*

**Tabel 5.4** **Produksi Tanaman Buah-Buahan Menurut Jenis Buah di Kecamatan Bontang Barat (kuintal), 2016**  
**Production of Fruits by Kind of Fruit in Bontang Barat Subdistrict (quintal), 2016**

Jenis Buah <i>Kind of Fruit</i>	Produksi <i>Production</i>
(1)	(2)
Alpukat/ <i>Avocado</i>	-
Belimbing/ <i>Star fruit</i>	15
Duku/langsat/kokosan/ <i>Duku</i>	-
Durian/ <i>Durian</i>	-
Jambu biji/ <i>Guava</i>	12
Jambu air/ <i>Rose apple</i>	15
Jeruk siam/keprok/ <i>Tangerine/orange</i>	-
Jeruk besar/ <i>Pamelo</i>	-
Mangga/ <i>Mango</i>	61
Nangka/cempedak/ <i>Jack fruit</i>	-
Nenas/ <i>Pineapple</i>	-
Pepaya/ <i>Papaya</i>	65
Pisang/ <i>Banana</i>	75
Rambutan/ <i>Rambutan</i>	47
Salak/ <i>Salacca</i>	4
Sawo/ <i>Star apple</i>	16
Sirsak/ <i>Soursop</i>	16
Sukun/ <i>Bread fruit</i>	26
Melon/ <i>Melon</i>	-
Semangka/ <i>Watermelon</i>	-

Sumber/*Source*: Dinas Ketahanan Pangan, Perikanan, dan Pertanian Kota Bontang/*Food Security, Fishery, and Agriculture Department of Bontang Municipality*

**Tabel 5.5** **Produksi Tanaman Biofarmaka Menurut Jenis Tanaman di Kecamatan Bontang Barat (kg), 2016**  
**Table** **Production of Medical Plants by Kind of Plant in Bontang Barat Subdistrict (kg), 2016**

Jenis Tanaman <i>Kind of Plant</i>	Produksi <i>Production</i>
(1)	(2)
Jahe/ <i>Ginger</i>	21
Laos/ <i>lengkuas/Galangal</i>	37
Kencur/ <i>East indian galangal</i>	-
Kunyit/ <i>Tumeric</i>	17

Sumber/Source: Dinas Ketahanan Pangan, Perikanan, dan Pertanian Kota Bontang/*Food Security, Fishery, and Agriculture Department of Bontang Municipality*



**Tabel 5.6 Luas Areal dan Produksi Tanaman Perkebunan Menurut Jenis Tanaman di Kecamatan Bontang Barat, 2016**  
**Planted Area and Production of Estate Crops by Kind of Plant in Bontang Barat Subdistrict, 2016**

Jenis Tanaman <i>Kind of Plant</i>	Luas Areal <i>Planted Area (ha)</i>	Produksi <i>Production (ton)</i>
(1)	(2)	(3)
Karet/ <i>Rubber</i>	-	-
Kelapa/ <i>Coconut</i>	5,00	0,14
Kelapa sawit/ <i>Oil palm</i>	9,50	-
Kopi/ <i>Coffee</i>	-	-
Lada/ <i>Pepper</i>	-	-
Kakao/ <i>Cocoa</i>	-	-
Aren/ <i>Palm sugar</i>	4,00	-
Kemiri/ <i>Candlenut</i>	2,00	-
Jambu mete/ <i>Cashewnut</i>	3,00	-

Sumber/*Source*: Dinas Ketahanan Pangan, Perikanan, dan Pertanian Kota Bontang/*Food Security, Fishery, and Agriculture Department of Bontang Municipality*

**Tabel 5.7** Populasi Ternak Menurut Jenis Ternak di Kecamatan Bontang Barat (ekor), 2016  
**Table** *Livestock Population by Kind of Livestock in Bontang Barat Subdistrict (heads), 2016*

<b>Jenis Ternak</b> <i>Kind of Livestock</i>	<b>Populasi Ternak</b> <i>Livestock Population</i>
(1)	(2)
Sapi perah/ <i>Dairy cattle</i>	-
Sapi potong/ <i>Beef cattle</i>	204
Kerbau/ <i>Buffalo</i>	-
Kuda/ <i>Horse</i>	-
Kambing/ <i>Goat</i>	348
Domba/ <i>Sheep</i>	-
Babi/ <i>Pig</i>	4 187

Sumber/Source: Dinas Ketahanan Pangan, Perikanan, dan Pertanian Kota Bontang/*Food Security, Fishery, and Agriculture Department of Bontang Municipality*

**Tabel 5.8** **Populasi Unggas Menurut Jenis Unggas di Kecamatan Bontang Barat (ekor), 2016**  
***Poultry Population by Kind of Poultry in Bontang Barat Subdistrict (heads), 2016***

<b>Jenis Unggas</b> <b><i>Kind of Poultry</i></b>	<b>Populasi Unggas</b> <b><i>Poultry Population</i></b>
(1)	(2)
Ayam kampung/ <i>Native chicken</i>	37 662
Ayam petelur/ <i>Layer</i>	-
Ayam pedaging/ <i>Broiler</i>	-
Itik/itik manila/ <i>Duck/muscovy duck</i>	3 874
Burung puyuh/ <i>Quail</i>	12

Sumber/Source: Dinas Ketahanan Pangan, Perikanan, dan Pertanian Kota Bontang/*Food Security, Fishery, and Agriculture Department of Bontang Municipality*

**Tabel 5.9** Jumlah Rumah Tangga dan Produksi Perikanan Menurut Subsektor Perikanan di Kecamatan Bontang Barat, 2016  
**Number of Households and Production of Fishery by Fishery Subsector in Bontang Barat Subdistrict, 2016**

Subsektor Perikanan <i>Fishery Subsector</i>	Jumlah Rumah Tangga <i>Number of Households</i>	Produksi <i>Production (ton)</i>
(1)	(2)	(3)
1. Perikanan Tangkap/ <i>Fish Capture</i>		
a. Perikanan laut/ <i>Marine fisheries</i>	-	-
b. Perairan umum/ <i>Inland water</i>	-	-
2. Perikanan Budidaya/ <i>Aquaculture</i>		
a. Budidaya laut/ <i>Marine culture</i>	-	-
b. Tambak/ <i>Brackish water pond</i>	-	-
c. Kolam/ <i>Fresh water pond</i>	125	14,60
d. Keramba/ <i>Cage</i>	25	4,90
e. Jaring apung/ <i>Floating cage net</i>	-	-
f. Sawah/ <i>Paddy field</i>	-	-
<b>Jumlah/Total</b>	<b>150</b>	<b>19,50</b>

Sumber/Source: Dinas Ketahanan Pangan, Perikanan, dan Pertanian Kota Bontang/*Food Security, Fishery, and Agriculture Department of Bontang Municipality*



# PERDAGANGAN

TRADE

# 6

BAB  
Chapter

**Pedagang besar**  
*Wholesaler*

1

**Pedagang menengah**  
*Medium trader*

20



**Pedagang Menurut Klasifikasinya  
di Kecamatan Bontang Barat**

*Traders by Classification in Bontang Barat Subdistrict*

**Pedagang kecil**  
*Small trader*

138

2016



**Tabel 6.1** Jumlah Pedagang Menurut Klasifikasinya di Kecamatan Bontang Barat, 2015-2016  
**Table** *Number of Traders by Classification in Bontang Barat Subdistrict, 2015-2016*

Klasifikasi <i>Classification</i>	2015	2016
(1)	(2)	(3)
Pedagang besar <i>Wholesaler</i>	5	1
Pedagang menengah <i>Medium trader</i>	12	20
Pedagang kecil <i>Small trader</i>	25	138

Sumber/Source: Dinas Perdagangan dan Koperasi & UMKM Kota Bontang/*Industry, Trade, Cooperation, and UMKM Services of Bontang Municipality*



**Tabel 6.2** Jumlah Koperasi Menurut Kelurahan dan Jenis Koperasi di Kecamatan Bontang Barat, 2016  
**Table** *Number of Cooperatives by Village and Type of Cooperatives in Bontang Barat Subdistrict, 2016*

Kelurahan <i>Village</i>	Koperasi Jasa	Koperasi Konsumen	Koperasi Produsen	Koperasi Simpan Pinjam	Jumlah <i>Total</i>
(1)	(2)	(3)	(4)	(5)	(6)
1. Kanaan	-	1	-	-	1
2. Gunung Telihan	-	5	1	-	6
3. Belimbing	-	12	-	1	13
<b>Bontang Barat</b>	-	<b>18</b>	<b>1</b>	<b>1</b>	<b>20</b>

Sumber/Source: Dinas Perdagangan dan Koperasi & UMKM Kota Bontang/Industry, Trade, Cooperation, and UMKM Services of Bontang Municipality

**Tabel 6.3** Jumlah Koperasi Menurut Kelurahan dan Kelompok Usaha di Kecamatan Bontang Barat, 2016  
*Number of Cooperatives by Village and Business Group in Bontang Barat Subdistrict, 2016*

Kelurahan <i>Village</i>	Koperasi Unit Desa	Koperasi Pegawai Negeri	Koperasi Karyawan	Koperasi Industri Kerajinan Rakyat	Koperasi Pasar
(1)	(2)	(3)	(4)	(5)	(6)
1. Kanaan	-	-	-	-	-
2. Gunung Telihan	-	-	-	-	1
3. Belimbing	-	-	6	1	-
<b>Bontang Barat</b>	-	-	<b>6</b>	<b>1</b>	<b>1</b>

Sumber/Source: Dinas Perdagangan dan Koperasi & UMKM Kota Bontang/*Industry, Trade, Cooperation, and UMKM Services of Bontang Municipality*

Lanjutan Tabel/Continued Table 6.3

Kelurahan <i>Village</i>	Koperasi Wanita	Koperasi Nelayan	Koperasi TKBM	Koperasi Angkatan Darat & Kepolisian	Koperasi Simpan Pinjam
(1)	(7)	(8)	(9)	(10)	(11)
1. Kanaan	-	-	-	-	-
2. Gunung Telihan	1	-	-	-	-
3. Belimbing	1	-	-	-	1
<b>Bontang Barat</b>	<b>2</b>	-	-	-	<b>1</b>

Sumber/Source: Dinas Perdagangan dan Koperasi & UMKM Kota Bontang/*Industry, Trade, Cooperation, and UMKM Services of Bontang Municipality*

Lanjutan Tabel/*Continued Table 6.3*

Kelurahan <i>Village</i>	Koperasi Pondok Pesantren	Koperasi Serba Usaha	Koperasi Lainnya	Jumlah <i>Total</i>
(1)	(12)	(13)	(14)	(15)
1. Kanaan	-	1	-	1
2. Gunung Telihan	-	-	4	6
3. Belimbing	-	-	4	13
<b>Bontang Barat</b>	-	<b>1</b>	<b>8</b>	<b>20</b>

Sumber/Source: Dinas Perdagangan dan Koperasi & UMKM Kota Bontang/*Industry, Trade, Cooperation, and UMKM Services of Bontang Municipality*



# HOTEL

HOTEL

# 7

BAB  
Chapter

## HOTEL DAN AKOMODASI HOTEL KECAMATAN BONTANG BARAT, 2016

Number of Hotels and Hotels Accomodation in Bontang Barat Subdistrict 2016

**Hotel Bintang 1**  
Classified Hotels

**Hotel Non Bintang 4**  
Nonclassified Hotels

**175**  
Kamar  
Rooms



# HOTEL



**312**  
Tempat tidur  
Beds





**Tabel 7.1** Jumlah Hotel Menurut Kelurahan dan Klasifikasi di Kecamatan Bontang Barat, 2016  
**Table** *Number of Hotel by Village and Classified Hotel in Bontang Barat Subdistrict, 2016*

Kelurahan <i>Village</i>	Hotel Berbintang <i>Classified Hotels</i>					Hotel Nonbintang & Akomodasi Lainnya	Jumlah <i>Total</i>
	Bintang 1	Bintang 2	Bintang 3	Bintang 4	Bintang 5	<i>Non-Classified Hotels &amp; Other Accommodations</i>	
(1)	(2)	(3)	(4)	(5)	(6)	(7)	(8)
1. Kanaan	-	-	-	-	-	-	-
2. Gunung Telihan	-	-	-	-	-	2	2
3. Belimbing	-	-	1	-	-	1	2
<b>Bontang Barat</b>	-	-	<b>1</b>	-	-	<b>3</b>	<b>4</b>

Sumber/Source: Badan Pusat Statistik Kota Bontang/BPS-Statistics of Bontang Municipality



HOTEL

**Tabel 7.2** Jumlah Akomodasi Hotel Menurut Kelurahan di Kecamatan Bontang Barat, 2015-2016  
*Number of Hotel Accomodations by Village in Bontang Barat Subdistrict, 2015-2016*

Kelurahan Village	Hotel Hotels		Kamar Rooms		Tempat Tidur Beds	
	2015	2016	2015	2016	2015	2016
(1)	(2)	(3)	(4)	(5)	(6)	(7)
1. Kanaan	-	-	-	-	-	-
2. Gunung Telihan	3	2	48	38	75	63
3. Belimbing	2	2	155	137	307	249
<b>Bontang Barat</b>	<b>5</b>	<b>4</b>	<b>203</b>	<b>175</b>	<b>382</b>	<b>312</b>

Sumber/Source: Badan Pusat Statistik Kota Bontang/BPS-Statistics of Bontang Municipality

# HARGA

PRICE

# 8

BAB  
Chapter

## Harga Cabe di Pasar Telihan 2016 Chili Prices in Telihan Market 2016





**Tabel 8.1 Rata-Rata Harga Eceran Beberapa Jenis Barang Menurut Bulan di Pasar Telihan (rupiah), 2016**  
***Retail Prices of Selected Commodities by Month in Telihan Market (rupiahs), 2016***

Jenis Barang Commodities	Merk/ Kualitas Brand/ Quality	Satuan Unit	Januari January	Februari February	Maret Marh
(1)	(2)	(3)	(4)	(5)	(6)
1. Beras	Bengawan	kg	14 000	14 000	14 000
	Blekok	kg	11 000	11 000	11 000
	Ayam jago	kg	11 000	11 000	11 000
2. Tepung terigu	Segitiga biru	kg	8 000	8 000	8 000
3. Jagung pilihan kering	Kwalitas I	kg	7 000	7 000	7 000
4. Ketela pohon	Segar	kg	3 000	3 000	3 000
5. Mie kering	Indomie	bungkus	2 500	2 500	2 500
6. Minyak goreng	Bimoli	liter	15 000	15 000	15 000
	Curah	liter	18 000	18 000	18 000
7. Gula pasir	Gulaku	kg	15 000	15 000	15 000
	Lokal (putih)	kg	14 000	14 000	14 000
8. Susu kental manis	Bendera	kaleng	14 000	14 000	14 000
	Indomilk	kaleng	11 000	11 000	11 000
9. Susu bubuk	Bendera	400 gr	50 000	50 000	50 000
	Indomilk	400 gr	50 000	50 000	50 000
10. Daging sapi	biasa	kg	125 000	130 000	130 000
11. Ayam	Boiler	ekor	48 000	48 000	45 000
	Kampung	ekor	140 000	140 000	130 000
12. Telur	Boiler	butir	1 800	1 700	1 500
	Kampung	butir	2 000	2 000	2 000
13. Kembang	Segar	kg	45 000	45 000	45 000
14. Mas	Segar	kg	45 000	45 000	45 000
15. Tongkol	Segar	kg	20 000	20 000	20 000
16. Cabai merah besar	Segar	kg	35 000	43 000	48 000
17. Cabai keriting	Segar	kg	27 000	40 000	50 000
18. Cabai biasa/tiung	Segar	kg	45 000	31 000	60 000
19. Cabai rawit	Segar	kg	35 000	35 000	35 000
20. Bawang merah	Segar	kg	40 000	35 000	37 000
21. Bawang putih	Segar	kg	30 000	33 000	35 000
22. Kentang	Segar	kg	17 000	18 000	15 000
23. Kol	Segar	kg	13 000	12 000	8 000
24. Tomat	Segar	kg	20 000	10 000	18 000
25. Wortel	Segar	kg	20 000	18 000	18 000
26. Apel	Impor	kg	35 000	35 000	35 000
	Lokal	kg	30 000	30 000	30 000
27. Jeruk	Impor	kg	40 000	40 000	40 000
	Lokal	kg	12 000	12 000	12 000
28. Garam halus	Baik	kg	1 500	1 500	1 500
29. Minyak tanah	Baik	kg	15 000	15 000	15 000

Sumber/Source: Dinas Perdagangan dan Koperasi & UMKM Kota Bontang/Industry, Trade, Cooperation, and UMKM Services of Bontang Municipality

Lanjutan Tabel/Continued Table 8.1

Jenis Barang Commodities	Merk/ Kualitas Brand/ Quality	Satuan Unit	April April	Mei May	Juni June
(1)	(2)	(3)	(7)	(8)	(9)
1. Beras	Bengawan	kg	14 000	14 000	14 000
	Blekok	kg	11 000	11 000	11 000
	Ayam jago	kg	11 000	11 000	11 000
2. Tepung terigu	Segitiga biru	kg	8 000	8 000	8 000
3. Jagung pipilan kering	Kwalitas I	kg	7 000	7 000	7 000
4. Ketela pohon	Segar	kg	3 000	3 000	3 000
5. Mie kering	Indomie	bungkus	2 500	2 500	2 500
6. Minyak goreng	Bimoli	liter	15 000	15 000	15 000
	Curah	liter	18 000	18 000	18 000
7. Gula pasir	Gulaku	kg	15 000	15 000	16 500
	Lokal (putih)	kg	14 000	16 000	17 000
8. Susu kental manis	Bendera	kaleng	14000	14000	14000
	Indomilk	kaleng	11000	11000	11000
9. Susu bubuk	Bendera	400 gr	50 000	50 000	50 000
	Indomilk	400 gr	50 000	50 000	50 000
10. Daging sapi	biasa	kg	130 000	130 000	130 000
11. Ayam	Boiler	ekor	42 000	45 000	45 000
	Kampung	ekor	130 000	130 000	130 000
12. Telur	Boiler	butir	1 500	1 500	1 600
	Kampung	butir	2 000	2 000	2 000
13. Kembang	Segar	kg	45 000	45 000	45 000
14. Mas	Segar	kg	45 000	45 000	45 000
15. Tongkol	Segar	kg	20 000	15 000	15 000
16. Cabai merah besar	Segar	kg	40 000	38 000	37 000
17. Cabai keriting	Segar	kg	40 000	36 000	35 000
18. Cabai biasa/tiung	Segar	kg	40 000	34 000	30 000
19. Cabai rawit	Segar	kg	35 000	35 000	35 000
20. Bawang merah	Segar	kg	47 000	45 000	35 000
21. Bawang putih	Segar	kg	38 000	35 000	35 000
22. Kentang	Segar	kg	12 000	14 000	16 000
23. Kol	Segar	kg	11 000	14 000	14 500
24. Tomat	Segar	kg	15 000	15 000	10 000
25. Wortel	Segar	kg	18 000	18 000	20 000
26. Apel	Impor	kg	35 000	35 000	35 000
	Lokal	kg	30 000	30 000	30 000
	Impor	kg	40 000	40 000	40 000
27. Jeruk	Lokal	kg	12 000	12 000	12 000
	Baik	kg	1 500	1 500	1 500
29. Minyak tanah	Baik	kg	15 000	15 000	15 000

Sumber/Source: Dinas Perdagangan dan Koperasi & UMKM Kota Bontang/Industry, Trade, Cooperation, and UMKM Services of Bontang Municipality

Lanjutan Tabel/*Continued Table 8.1*

Jenis Barang <i>Commodities</i>	Merk/ Kualitas <i>Brand/ Quality</i>	Satuan <i>Unit</i>	Juli <i>July</i>	Agustus <i>August</i>	September <i>September</i>
(1)	(2)	(3)	(10)	(11)	(12)
1. Beras	Bengawan	kg	14 000	14 000	14 000
	Blekok	kg	11 000	11 000	11 000
	Ayam jago	kg	11 000	11 000	11 000
2. Tepung terigu	Segitiga biru	kg	8 000	8 000	8 000
3. Jagung pipilan kering	Kwalitas I	kg	7 000	7 000	7 000
4. Ketela pohon	Segar	kg	3 000	3 000	3 000
5. Mie kering	Indomie	bungkus	2 500	2 500	2 500
6. Minyak goreng	Bimoli	liter	15 000	15 000	14000
	Curah	liter	18 000	18 000	18000
7. Gula pasir	Gulaku	kg	16 500	16 500	16 500
	Lokal (putih)	kg	17 000	16 000	15 000
8. Susu kental manis	Bendera	kaleng	14000	14000	14000
	Indomilk	kaleng	11000	11000	11000
9. Susu bubuk	Bendera	400 gr	50 000	50 000	50 000
	Indomilk	400 gr	50 000	50 000	50 000
10. Daging sapi	biasa	kg	130 000	130 000	130 000
11. Ayam	Boiler	ekor	45 000	45 000	45 000
	Kampung	ekor	130 000	130 000	130 000
12. Telur	Boiler	butir	1 600	1 500	1 500
	Kampung	butir	2 000	2 000	2 000
13. Kembang	Segar	kg	45 000	45 000	45 000
14. Mas	Segar	kg	45 000	45 000	45 000
15. Tongkol	Segar	kg	15 000	15 000	15 000
16. Cabai merah besar	Segar	kg	40 000	42 000	42 500
17. Cabai keriting	Segar	kg	32 500	30 000	37 500
18. Cabai biasa/tiung	Segar	kg	25 000	31 000	28 000
19. Cabai rawit	Segar	kg	35 000	35 000	35 000
20. Bawang merah	Segar	kg	42 000	45 000	44 500
21. Bawang putih	Segar	kg	35 000	35 000	36 500
22. Kentang	Segar	kg	18 000	19 000	18 500
23. Kol	Segar	kg	13 000	9 000	8 000
24. Tomat	Segar	kg	10 000	10 000	8 000
25. Wortel	Segar	kg	20 000	15 000	12 000
26. Apel	Impor	kg	35 000	35 000	35 000
	Lokal	kg	30 000	30 000	30 000
27. Jeruk	Impor	kg	40 000	40 000	40 000
	Lokal	kg	12 000	12 000	12 000
28. Garam halus	Baik	kg	1 500	1 500	1 500
29. Minyak tanah	Baik	kg	15 000	15 000	15 000

Sumber/Source: Dinas Perdagangan dan Koperasi & UMKM Kota Bontang/*Industry, Trade, Cooperation, and UMKM Services of Bontang Municipality*

Lanjutan Tabel/Continued Table 8.1

Jenis Barang Commodities	Merk/ Kualitas Brand/ Quality	Satuan Unit	Oktober October	November November	Desember December
(1)	(2)	(3)	(13)	(14)	(15)
1. Beras	Bengawan	kg	14 000	14 000	14 000
	Blekok	kg	11 000	11 000	11 000
	Ayam jago	kg	11 000	11 000	11 000
2. Tepung terigu	Segitiga biru	kg	8 000	8 000	8 000
3. Jagung pipilan kering	Kwalitas I	kg	7 000	7 000	7 000
4. Ketela pohon	Segar	kg	3 000	3 000	3 000
5. Mie kering	Indomie	bungkus	2 500	2 500	3 500
6. Minyak goreng	Bimoli	liter	14000	15 000	14 000
	Curah	liter	18000	18 000	18 000
7. Gula pasir	Gulaku	kg	16 500	16 500	16 500
	Lokal (putih)	kg	15 000	14 000	14 000
8. Susu kental manis	Bendera	kaleng	14 000	14 000	14 000
	Indomilk	kaleng	11 000	11 000	11 000
9. Susu bubuk	Bendera	400 gr	50 000	50 000	50 000
	Indomilk	400 gr	50 000	50 000	50 000
10. Daging sapi	biasa	kg	130 000	130 000	130 000
11. Ayam	Boiler	ekor	40 000	45 000	45 000
	Kampung	ekor	130 000	130 000	130 000
12. Telur	Boiler	butir	1 500	1 500	1 500
	Kampung	butir	2 000	2 000	2 000
13. Kembang	Segar	kg	45 000	30 000	30 000
14. Mas	Segar	kg	48 000	45 000	45 000
15. Tongkol	Segar	kg	10 000	20 000	18 000
16. Cabai merah besar	Segar	kg	38 000	55 000	42 000
17. Cabai keriting	Segar	kg	25 000	46 000	40 000
18. Cabai biasa/tiung	Segar	kg	20 000	48 000	32 000
19. Cabai rawit	Segar	kg	35 000	60 000	60000
20. Bawang merah	Segar	kg	37 000	46 000	45 000
21. Bawang putih	Segar	kg	36 000	40 000	40 000
22. Kentang	Segar	kg	18 000	15 000	15 000
23. Kol	Segar	kg	8 000	12 000	12 000
24. Tomat	Segar	kg	8 000	10 000	10 000
25. Wortel	Segar	kg	12 000	11 000	11 000
26. Apel	Impor	kg	35 000	35 000	35 000
	Lokal	kg	30 000	30 000	30 000
27. Jeruk	Impor	kg	40 000	40 000	40 000
	Lokal	kg	12 000	12 000	12 000
28. Garam halus	Baik	kg	1 500	1 500	1 500
29. Minyak tanah	Baik	kg	15 000	15 000	15 000

Sumber/Source: Dinas Perdagangan dan Koperasi & UMKM Kota Bontang/Industry, Trade, Cooperation, and UMKM Services of Bontang Municipality

# DATA

MENCERDASKAN BANGSA

*Enlighten The Nation*



**BADAN PUSAT STATISTIK**

**KOTA BONTANG**

***BPS-Statistics of Bontang Municipality***

Jalan Awang Long No. 2 Bontang 75313

Telp : (0548) 26066, Fax : (0548) 277066

Homepage: <http://bontangkota.bps.go.id>, E-mail: [bps6474@bps.go.id](mailto:bps6474@bps.go.id)

