

# KECAMATAN KIBIN DALAM ANGKA 2018

*Kibin Subdistrict in Figures*



**BADAN PUSAT STATISTIK  
KABUPATEN SERANG**  
*BPS-Statistics of Serang Regency*



# KECAMATAN KIBIN DALAM ANGKA 2018

*Kibin Subdistrict in Figures*



**Kecamatan Kibin dalam Angka**  
***Kibin Districtin Figures***  
**2018**

**No. Publikasi/Publication Number:** 3604.1218

**Katalog/Catalog:** 1102001.3604121

**Ukuran Buku/Book Size:** 14,8 cm x 21 cm

**Jumlah Halaman/Number of Pages:** xiii + 96 halaman /pages

**Naskah/Manuscript:**

Badan Pusat Statistik Kabupaten Serang

*BPS-Statistics of Serang Regency*

**Gambar Kover oleh/Cover Designed by:**

Badan Pusat Statistik Kabupaten Serang

*BPS-Statistics of Serang Regency*

**Ilustrasi Kover/Cover Illustration:**

.../ ...

**Diterbitkan oleh/Published by:**

© BPS Kabupaten Serang/*BPS-Statistics of Serang Regency*

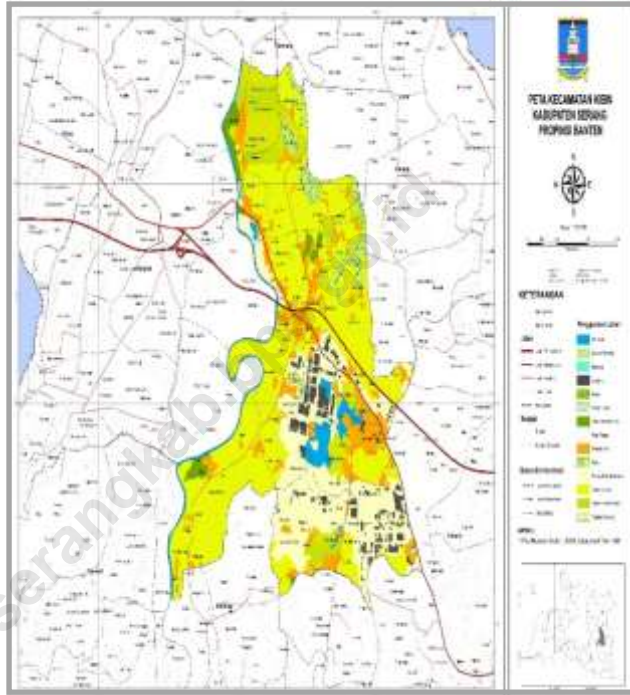
**Dicetak oleh/Printed by:**

...

**Dilarang mengumumkan, mendistribusikan, mengomunikasikan, dan/atau  
menggandakan sebagian atau seluruh isi buku ini untuk tujuan komersial tanpa izin  
tertulis dari Badan Pusat Statistik**

*Prohibited to announce, distribute, communicate, and/or copy part or all of this book  
for commercial purpose without permission from BPS-Statistics Indonesia*

**PETA WILAYAH KECAMATAN KIBIN**  
*MAP OF KIBIN DISTRICT*



Sumber: Bappeda Kabupaten Serang



**Kepala BPS Kabupaten Serang**  
*CHIEF STATISTICIAN OF SERANG REGENCY*



**Ir. Indra Warman**







## KATA PENGANTAR

Ketersediaan data yang memadai sampai dengan tingkat wilayah/region yang lebih kecil seperti Kecamatan dan Desa/Kelurahan banyak dibutuhkan oleh pengguna data dalam melihat potensi dan mengevaluasi hasil-hasil pelaksanaan pembangunan ditingkat wilayah tersebut.

Publikasi Kecamatan Kibin Dalam Angka Tahun 2018 adalah salah satu upaya kami untuk menyajikan data sampai tingkat desa. Diharapkan data yang disajikan dapat memenuhi kebutuhan berbagai pihak, sebagai salah satu acuan untuk melihat potensi dan hasil-hasil pembangunan di Kecamatan Kibin

Walaupun publikasi ini telah disiapkan secermat mungkin, namun disadari masih terdapat kekurangan-kekurangan. Untuk itu segala saran sangat diharapkan agar penerbitan publikasi dimasa mendatang dapat lebih baik dan tepat waktu.

Kepada rekan-rekan Dinas/Instansi yang ada di Kecamatan Kibin dan kepada semua pihak yang telah membantu kelancaran dalam penyusunan pulikasi ini, kami ucapkan banyak terima kasih.

Serang, September 2018  
Kepala Badan Pusat Statistik  
Kabupaten Serang

Ir. Indra Warman



## **PREFACE**

*The availability of adequate data up to smaller level of area/region such as District and Village/Subdistrict is much needed by data user in order to see the potential and to evaluate the result of the developments in that particular region.*

*The publication of Kibin District In Figures 2018 is one of our effort to present the data up to village level. We hope the data presented can meet the needs of various parties, as a reference to see the potential and development results in Kibin District.*

*Although this publication has been prepared as thoroughly as possible, but we realize there are still shortcomings. Therefore we appreciate any suggestion for better future publications.*

*To our fellow Departments/Institutions in Kibin District and to all of those who have helped the preparation of this publication, we convey our gratitude.*

*Serang, September 2018*

*Chief Statistician of  
Serang Regency*

*Ir. Indra Warman*

## DAFTAR ISI/CONTENTS

	halaman page
Peta Wilayah Kecamatan .....	iii
<i>Map Of ... District</i> .....	iii
<i>Chief Statistician Of Serang Regency</i> .....	v
Kata Pengantar .....	vii
<i>Preface</i> .....	viii
Daftar Isi/ <i>Contents</i> .....	ix
Daftar Tabel/ <i>List Of Tables</i> .....	xi
Penjelasan Umum/ <i>Explanatory Notes</i> .....	xviii
1 Geografi .....	1
<i>Geography</i> .....	1
2 Pemerintahan .....	7
<i>Government</i> .....	7
3 Kependudukan .....	18
<i>Population</i> .....	18
4 Pendidikan .....	22
<i>Education</i> .....	22
5 Kesehatan dan KB .....	35
<i>Health and Birth Control</i> .....	35
6 Sosial Lainnya .....	53
<i>Other Social Affairs</i> .....	53
7 Pertanian .....	62
<i>Agriculture</i> .....	62
8 Industri dan Penggalan .....	73
<i>Industry and Excavation</i> .....	73
9 Perdagangan, Hotel dan Restoran .....	76
<i>Trade, Hotel and Restaurant</i> .....	76



## DAFTAR TABEL/LIST OF TABLES

	halaman page
<b>1 GEOGRAFI</b>	<b>1</b>
<b>GEOGRAPHY</b>	<b>1</b>
1.1 Luas Wilayah Desa/Kelurahan di Kecamatan Kibin, 2017 .....	3
Total Area by Village/Subdistrict in Kibin District, 2017.....	3
1.2 Letak Geografis Desa/Kelurahan di Kecamatan Kibin, 2017.....	4
Geographical Location of Village/Subdistrict in Kibin District, 2017 .....	4
1.3 Topografi Desa/Kelurahan di Kecamatan Kibin, 2017 .....	5
Topography of Village/Subdistrict in Kibin District, 2017 .....	5
1.4 Jarak Antar Desa/Kelurahan di Kecamatan Kibin, 2017 .....	6
Distances Between Villages/Subdistricts in Kibin District, 2017 .....	6
<b>2 PEMERINTAHAN</b>	<b>7</b>
<b>GOVERNMENT</b>	<b>7</b>
2.1 Status Pemerintahan dan Pembagian Wilayah Administrasi Desa/Kelurahan di Kecamatan Kibin, 2017.....	9
Governmental Status and Administrative Area Division of Village/Subdistrict in Kibin District, 2017 .....	9
2.2 Status Perdesaan dan Perkotaan Desa/Kelurahan di Kecamatan Kibin, 2017 .....	10
Urban and Rural Status of Village/Subdistrict in Kibin District, 2017.....	10
2.3 Status Pemerintahan Desa/Kelurahan di Kecamatan Kibin, 2017.....	11
Governmental Status of Village/Subdistrict in Kibin District, 2017.....	11
2.4 Kepemilikan Kantor Pemerintahan Desa/Kelurahan dan Badan Perwakilan Desa/Dewan Kelurahan di Kecamatan Kibin, 2017.....	12
Ownership of Government Office and Council of Village/ Subdistrict in Kibin District, 2017.....	12
2.5 Kategori Desa/Kelurahan Menurut Tingkat Perkembangan di Kecamatan Kibin, 2017 .....	13

Categories of Village/Subdistrict by Level of Development in Kibin District, 2017.....	13
2.6 Jumlah Pegawai Kecamatan/Desa/Kelurahan Menurut Status Pegawai di Kecamatan Kibin, 2017 .....	14
Number of Official of District/Village/Subdistrict by Status in Kibin District, 2017.....	14
2.7 Jumlah Pegawai Kecamatan/Desa/Kelurahan Menurut Pendidikan di Kecamatan Kibin, 2017 .....	15
Number of Official of District/Village/Subdistrict by Level of Education in Kibin District, 2017 .....	15
2.8 Jumlah Pegawai Kecamatan/Desa/Kelurahan Menurut Jabatan di Kecamatan Kibin, 2017.....	16
Number of Official of District/Village/Subdistrict by Position in Kibin District, 2017 .....	16
<b>3 KEPENDUDUKAN</b>	<b>18</b>
<b>POPULATION</b>	<b>18</b>
3.1 Jumlah Penduduk Menurut Jenis Kelamin dan Rasio Jenis Kelamin di Kecamatan Kibin, 2017 .....	20
Population by Sex and Sex Ratio in Kibin District, 2017 .....	20
3.2 Penduduk Menurut Kelompok Umur di Kecamatan Kibin, 2017 .....	21
Population by Age Group in Kibin District, 2017 .....	21
<b>4 PENDIDIKAN</b>	<b>22</b>
<b>EDUCATION</b>	<b>22</b>
4.1 Jumlah Sekolah, Guru dan Murid Madrasah Aliyah di Kecamatan Kibin, 2017.....	24
Number of School, Teacher and Student of Islamic High Scholl in Kibin District, 2017 .....	24
4.2 Jumlah Sekolah, Guru dan Murid Raudhatul Athfal di Kecamatan Kibin, 2017.....	25
Number of Schools, Pupils, and Teachers of Islamic Kindergarten in Kibin District, 2017 .....	25
4.3 Jumlah Sekolah, Guru dan Murid Taman Kanak-kanak (TK) di Kecamatan Kibin, 2017.....	26

Number of Schools, Pupils, and Teachers of Kindergarten in Kibin District, 2017 .....	26
4.4 Jumlah Sekolah, Guru dan Murid Sekolah Dasar (SD) di Kecamatan Kibin, 2017 .....	27
Number of Schools, Pupils, and Teachers of Elementary School in Kibin District, 2017 .....	27
4.5 Jumlah Sekolah, Guru dan Murid Madrasah Ibtidaiyah (MI) di Kecamatan Kibin, 2017 .....	28
Number of Schools, Pupils, and Teachers of Islamic Elementary School in Kibin District, 2017.....	28
4.6 Jumlah Sekolah, Murid, dan Guru Sekolah Menengah Pertama (SMP) di Kecamatan Kibin, 2017.....	29
Number of Schools, Pupils, and Teachers of Junior High School in Kibin District, 2017 .....	29
4.7 Jumlah Sekolah, Guru dan Murid Madrasah Tsanawiyah (MTs) di Kecamatan Kibin, 2017 .....	30
Number of Schools, Pupils, and Teachers of Islamic Junior High School in Kibin District, 2017.....	30
4.8 Jumlah Sekolah, Guru dan Murid Sekolah Menengah Umum (SMU) di Kecamatan Kibin, 2017 .....	31
Number of Schools, Pupils, and Teachers of High School in Kibin District, 2017 .....	31
4.9 Jumlah Sekolah, Guru dan Murid Sekolah Menengah Kejuruan (SMK) di Kecamatan Kibin, 2017.....	32
Number of Schools, Pupils, and Teachers of Vocational High School in Kibin District, 2017 .....	32
4.10 Jumlah Lembaga Kursus, Pengajar dan Siswa di Kecamatan Kibin, 2017 .....	33
Number of Course Institutions, Instructors and Students in Kibin District, 2017 .....	33
4.11 Jumlah Pasantren, Kyai dan Santri di Kecamatan Kibin, 2017 .....	34
Number of Islamic Boarding Schools, Clerics and Students in Kibin District, 2017 .....	34
<b>5 KESEHATAN DAN KB</b>	<b>35</b>

<b>HEALTH AND BIRTH CONTROL</b>	<b>35</b>
5.1 Jumlah Sarana Kesehatan di Kecamatan Kibin, 2017 .....	37
Number of Health Facilities in Kibin District, 2017 .....	37
5.2 Jumlah Tenaga Kesehatan di Kecamatan Kibin, 2017 .....	40
Number of Health Worker in Kibin District, 2017 .....	40
5.3 Jumlah Pasien Menurut Jenis Penyakit di Puskesmas Kecamatan Kibin, 2017.....	41
Number of Patients by Type of Disease in Public Health Center of Kibin District, 2017 .....	41
5.4 Target dan Realisasi Imunisasi di Kecamatan Kibin, 2017 .....	42
Targets and Realization of Vaccination in Kibin District, 2017 .....	42
5.5 Jumlah Kelahiran, Bayi Berat Lahir Rendah dan Balita/Anak Gizi Buruk di Kecamatan Kibin, 2017 .....	45
Number of Births, Low Birthweight Infants and Malnourished Child/Toddler in Kibin District, 2017 .....	45
5.6 Cakupan Kunjungan Ibu Hamil, K1 dan K2 di Kecamatan Kibin, 2017.....	46
Antenatal Care in Kibin District, 2017.....	46
5.7 Jumlah Persalinan yang Ditolong Tenaga Kesehatan di Kecamatan Kibin, 2017.....	47
Number of Births Assisted by Health Workers in Kibin District, 2017 .....	47
5.8 Jumlah Sarana Pelayanan KB di Kecamatan Kibin, 2017 .....	48
Number of Birth Control Facilities in Kibin District, 2017 .....	48
5.9 Jumlah Pasangan Usia Subur (PUS) di Kecamatan Kibin, 2017 .....	49
Number of Couples of Reproductive Age in Kibin District, 2017 .....	49
5.10 Jumlah Peserta KB Lestari Menurut Kelompok Umur di Kecamatan Kibin, 2017.....	50
Number of Participants of KB Lestari by Age Group in Kibin District, 2017.....	50
5.11 Jumlah Akseptor KB Menurut Alat/Cara Kontrasepsi di Kecamatan Kibin, 2017.....	51
Number of Family Planning (KB) Acceptor by Birth Control Methods in Kibin District, 2017 .....	51
<b>6 SOSIAL LAINNYA</b>	<b>53</b>
<b>OTHER SOCIAL AFFAIRS</b>	<b>53</b>



6.1	Jumlah Keluarga Menurut Tahapan Keluarga Sejahtera di Kecamatan Kibin, 2017 .....	55
	Number of Families by Prosperity Level in Kibin District, 2017 .....	55
6.2	Persentase Jumlah Pemeluk Agama di Kecamatan Kibin, 2017 .....	56
	Percentage of Believer in Kibin District, 2017 .....	56
6.3	Jumlah Tempat Peribadatan di Kecamatan Kibin, 2017 .....	57
	Number of Worship Facilities in Kibin District, 2017 .....	57
6.4	Jumlah Pernikahan, Talak/Cerai dan Rujuk Menurut Desa/Kelurahan di Kecamatan Kibin, 2017.....	58
	Number of Marriages, Separations/Divorces and Reconciliations by Village/Subdistrict in Kibin District, 2017 .....	58
6.5	Jumlah Permasalahan Sosial Menurut Jenis di Kecamatan Kibin, 2017 .....	59
	Number of Social Problems in Kibin District, 2017 .....	59
6.6	Banyaknya Fasilitas Olahraga Menurut Desa/Kelurahan di Kecamatan Kibin, 2017 .....	60
	Number of Sport Facilities in Kibin District, 2017 .....	60
<b>7</b>	<b>PERTANIAN</b>	<b>62</b>
	<b>AGRICULTURE</b>	<b>62</b>
7.1	Luas Lahan Sawah dan Pertanian Bukan Sawah di Kecamatan Kibin, 2017 .....	64
	Area of Wetland and Dryland Field in Kibin District, 2017.....	64
7.2	Luas Panen dan Produksi Tanaman Padi dan Palawija di Kecamatan Kibin, 2017.....	65
	Harvested Area and Production of Rice and Coarse Grains, Pulses, Roots and Tuber (CGPRT) Crops in Kibin District, 2017 .....	65
7.3	Luas Tanam dan Produksi Sayuran di Kecamatan Kibin, 2017 .....	66
	Planted Area and Production of Vegetables in Kibin District, 2017 .....	66
7.4	Luas Tanam dan Produksi Buah-buahan di Kecamatan Kibin, 2017 ....	67
	Planted Area and Production of Fruits in Kibin District, 2017.....	67
7.5	Luas Panen dan Produksi Tanaman Obat-obatan di Kecamatan Kibin, 2017.....	68
	Harvested Area and Production of Medicinal Plants in Kibin District, 2017 .....	68

7.6	Luas Area dan Produksi Perkebunan Rakyat di Kecamatan Kibin, 2017.....	69
	Planted Area and Production of Smallholder Plantation in Kibin District, 2017.....	69
7.7	Populasi Ternak dan Unggas di Kecamatan Kibin, 2017.....	70
	Population of Livestock and Poultry in Kibin District, 2017.....	70
7.8	Jumlah Kelompok Tani di Kecamatan Kibin, 2017.....	71
	Number of Farmers Group in Kibin District, 2017.....	71
7.9	Kelompok Tani dan Anggota di Kecamatan Kibin, 2017.....	72
	Farmers Group and Its Members in Kibin District, 2017.....	72
<b>8</b>	<b>INDUSTRI DAN PENGGALIAN</b>	<b>73</b>
	<b>INDUSTRY AND EXCAVATION</b>	<b>73</b>
8.1	Jumlah Perusahaan dan Tenaga Kerja Industri Menengah dan Besar Menurut Jenis Industri di Kecamatan Kibin, 2017.....	75
	Number of Medium/Large Manufacturing Establishment and Employees by Kind of Manufacturing in Kibin District, 2017.....	75
<b>9</b>	<b>PERDAGANGAN, HOTEL DAN RESTORAN</b>	<b>76</b>
	<b>TRADE, HOTEL AND RESTAURANT</b>	<b>76</b>
9.1	Jumlah Restoran dan Toko Kelontong di Kecamatan Kibin, 2017.....	78
	Number of Restaurants and Stores in Kibin District, 2017.....	78



## PENJELASAN UMUM/EXPLANATORY NOTES

Tanda-tanda, satuan-satuan, dan lain-lainnya yang digunakan dalam publikasi ini adalah sebagai berikut:

*Symbols, measurement units, and acronyms which are used in this publication, are as follows:*

### 1. TANDA-TANDA/SYMBOLS

Data tidak tersedia/ <i>Data not available</i>	:	...
Tidak ada atau nol / <i>Null or zero</i>	:	—
Data dapat diabaikan/ <i>Data negligible</i>	:	0
Tanda decimal/ <i>Decimal point</i>	:	,
Data tidak dapat ditampilkan/ <i>Not applicable</i>	:	NA
Angka perkiraan/ <i>Estimated figures</i>	:	e
Angka sementara/ <i>Preliminary figures</i>	:	x
Angka sangat sementara/ <i>Very preliminary figures</i>	:	xx
Angka diperbaiki/ <i>Revised figures</i>	:	r

### 2. SATUAN/UNITS

barel/ <i>barrel</i>	:	158,99 liter/ <i>litres</i> = 1/6,2898 m <sup>3</sup>
hektar (ha)/ <i>hectare (ha)</i>	:	10 000 m <sup>2</sup>
kilometer (km)/ <i>kilometres (km)</i>	:	1 000 meter/ <i>meters</i> (m)
knot/ <i>knot</i>	:	1,8523 km/jam (km/hour)
kuintal/ <i>quintal</i>	:	100 kg
KWh	:	1 000 Watt <i>hour</i>
MWh	:	1 000 KWh
liter (untuk beras)/ <i>litre (for rice)</i>	:	0,80 kg
ons/ <i>ounce</i>	:	28,31 gram/ <i>grams</i>
ton	:	1 000 kg

Satuan lain: buah, dus, butir, helai/lembar, kaleng, batang, pulsa, ton kilometer (ton-km), jam, menit, persen (%).

*Other units: unit, pack, pieces, sheet, tin, pulse, ton-kilometres(ton-km), hour, minute, percent (%).*

Perbedaan angka di belakang koma disebabkan oleh pembulatan angka.

*The difference in decimal numbers is caused by rounding.*





# 1

## GEOGRAFI GEOGRAPHY

<https://serangkab.go.id>





**Tabel 1.1 Luas Wilayah Desa/Kelurahan di Kecamatan Kibin, 2017**  
**Table Total Area by Village/Subdistrict in Kibin District, 2017**

Desa/Kelurahan Village/Subdistrict	Luas Wilayah (Km <sup>2</sup> ) Total Area (Km <sup>2</sup> )	Persentase Percentage
(1)	(2)	(3)
1. Nagara	3,14	11,09
2. Cijeruk	3,73	13,17
3. Barengkok	3,32	11,72
4. Nambo Ilir	4,24	14,97
5. Kibin	4,44	15,68
6. Tambak	2,04	7,20
7. Ciagel	2,13	7,52
8. Ketos	2,88	10,18
9. Sukamaju	2,40	8,47
<b>Kibin</b>	<b>28,32</b>	<b>100,0</b>

Sumber/ Source: Peraturan Daerah Kab. Serang No. 16 Tahun 2001 tentang Pembentukan Kecamatan dan kelurahan / Regional Regulation of Serang Regency No. 16, 2001 on The Formation of District and Subdistrict

**Tabel 1.2 Letak Geografis Desa/Kelurahan di Kecamatan Kibin, 2017**  
**Table Geographical Location of Village/Subdistrict in Kibin District, 2017**

Desa/Kelurahan <i>Village/Subdistrict</i>	Pantai <i>Coastal</i>	Bukan Pantai <i>Non-Coastal</i>		
		Lembah <i>Valley</i>	Kawasan Lereng <i>Hillside</i>	Dataran <i>Plain Area</i>
(1)	(2)	(3)	(4)	(5)
1. Nagara	-	-	-	√
2. Cijeruk	-	-	-	√
3. Barengkok	-	-	-	√
4. Nambo Ilir	-	-	-	√
5. Kibin	-	-	-	√
6. Tambak	-	-	-	√
7. Ciagel	-	-	-	√
8. Ketos	-	-	-	√
9. Sukamaju	-	-	-	√

Sumber/ Source: Kantor Desa Se Kecamatan Kibin/*Village Offices in Kibin District*

**Tabel 1.3 Topografi Desa/Kelurahan di Kecamatan Kibin, 2017**  
**Table Topography of Village/Subdistrict in Kibin District, 2017**

Desa/Kelurahan <i>Village/Subdistrict</i>	Ketinggian dari Permukaan Laut (m) <i>Altitude (m)</i>	Kemiringan Lahan <i>Slope</i>		
		Landai <i>Low</i> ( $< 15^\circ$ )	Sedang <i>Medium</i> ( $15^\circ-25^\circ$ )	Curam <i>High</i> ( $>25^\circ$ )
(1)	(2)	(3)	(4)	(5)
1. Nagara		✓	-	-
2. Cijeruk		✓	-	-
3. Barengkok		✓	-	-
4. Nambo Ilir		✓	-	-
5. Kibin		✓	-	-
6. Tambak		✓	-	-
7. Ciagel		✓	-	-
8. Ketos		✓	-	-
9. Sukamaju		✓	-	-

Sumber/ *Source*: Kantor Desa Se Kecamatan Kibin/*Village Offices in Kibin District*

GEOGRAPHY

**Tabel 1.4** Jarak Antar Desa/Kelurahan di Kecamatan Kibin, 2017  
**Table** Distances Between Villages/Subdistricts in Kibin District, 2017

Desa/ Kelurahan	Nagara	Cijeruk	Barengkok	Nambo Ilir	Kibin	Tambak	Ciagel	Ketos	Sukamaju
(1)	(2)	(3)	(4)	(5)	(6)	(7)	(8)	(9)	(10)
Nagara	-	3	7	6	5	4	6	6	6
Cijeruk	2	-	6	5	4	2	2	5	5
Barengkok	7	6	-	2	3	5	6	7	7
Nambo Ilir	6	5	2	-	2	3	4	5	5
Kibin	6	4	3	2	-	2	3	4	4
Tambak	4	2	5	3	2	-	2	4	4
Ciagel	6	2	6	4	3	2	-	3	4
Ketos	6	5	7	5	4	4	3	-	2
Sukamaju	6	5	7	5	4	4	4	2	-

Sumber/ Source: Kantor Desa Se Kecamatan Kibin/Village Offices in Kibin District

# 2

**PEMERINTAHAN  
GOVERNMENT**

<https://serangkab.bps.go.id>



**Tabel 2.1** Status Pemerintahan dan Pembagian Wilayah Administrasi Desa/Kelurahan di Kecamatan Kibin, 2017  
**Governmental Status and Administrative Area Division of Village/Subdistrict in Kibin District, 2017**

Desa/Kelurahan Village/Subdistrict	Status Pemerintahan Governmental Status	RW	RT
(1)	(2)	(4)	(5)
1. Nagara	Desa	4	22
2. Cijeruk	Desa	4	14
3. Barengkok	Desa	4	12
4. Nambo Ilir	Desa	6	22
5. Kibin	Desa	4	28
6. Tambak	Desa	2	10
7. Ciagel	Desa	4	17
8. Ketos	Desa	2	10
9. Sukamaju	Desa	3	12
<b>Kibin</b>		<b>33</b>	<b>146</b>

Sumber/ Source: Kantor Desa Se Kecamatan Kibin/Village Offices in Kibin District

## GOVERNMENT

**Tabel 2.2** Status Perdesaan dan Perkotaan Desa/Kelurahan di Kecamatan Kibin, 2017  
**Table** *Urban and Rural Status of Village/Subdistrict in Kibin District, 2017*

Desa/Kelurahan Village/Subdistrict	Perkotaan Urban	Perdesaan Rural
(1)	(2)	(3)
1. Nagara	-	√
2. Cijeruk	√	-
3. Barengkok	√	-
4. Nambo Ilir	√	-
5. Kibin	√	-
6. Tambak	√	-
7. Ciagel	√	-
8. Ketos	-	√
9. Sukamaju	-	√

Sumber/ Source: Kantor Kecamatan Kibin / Office of Kibin District



**Tabel 2.3** Status Pemerintahan Desa/Kelurahan di Kecamatan Kibin, 2017  
**Table** *Governmental Status of Village/Subdistrict in Kibin District, 2017*

Desa/Kelurahan Village/District	Status Pemerintahan Governmental Status	Ibu Kota Capital
(1)	(2)	(3)
1. Nagara	Desa	Kp. Patapan
2. Cijeruk	Desa	Kp. Tinggulun
3. Barengkok	Desa	Kp. Sadang
4. Nambo Ilir	Desa	Kp. Gorda Asem
5. Kibin	Desa	Kp. Kadinding
6. Tambak	Desa	Kp. Gardu
7. Ciagel	Desa	Kp. Teritih
8. Ketos	Desa	Kp. Tegal
9. Sukamaju	Desa	Kp. Laes Nambo

Sumber/ Source: Kantor Desa Se Kecamatan Kibin/Village Offices in Kibin District

GOVERNMENT

**Tabel 2.4 Kepemilikan Kantor Pemerintahan Desa/Kelurahan dan Badan Perwakilan Desa/Dewan Kelurahan di Kecamatan Kibin, 2017**  
***Ownership of Government Office and Council of Village/ Subdistrict in Kibin District, 2017***

Desa/Kelurahan <i>Village/Subdistrict</i>	Kantor Desa/Kelurahan <i>Village/Subdistrict Office</i>	Balai Desa <i>Village Meeting Hall</i>	BPD/DK <i>Village/Subdistrict Council</i>
(1)	(2)	(3)	(4)
1. Nagara	✓	✓	✓
2. Cijeruk	✓	✓	✓
3. Barengkok	✓	✓	✓
4. Nambo Ilir	✓	✓	✓
5. Kibin	✓	✓	✓
6. Tambak	✓	✓	✓
7. Ciagel	✓	✓	✓
8. Ketos	✓	✓	✓
9. Sukamaju	✓	✓	✓

Sumber/ Source: Kantor Desa Se Kecamatan Kibin/*Village Offices in Kibin District*

**Tabel 2.5** Kategori Desa/Kelurahan Menurut Tingkat Perkembangan di Kecamatan Kibin, 2017  
**Table** Categories of Village/Subdistrict by Level of Development in Kibin District, 2017

Desa/Kelurahan Village/Subdistrict	Swadaya	Swakarsa	Swasembada
(1)	(2)	(3)	(4)
1. Nagara	√	-	-
2. Cijeruk	√	-	-
3. Barengkok	√	-	-
4. Nambo Ilir	√	-	-
5. Kibin	√	-	-
6. Tambak	√	-	-
7. Ciagel	√	-	-
8. Ketos	√	-	-
9. Sukamaju	√	-	-

Sumber/ Source: Kantor Kecamatan Kibin / Office of Kibin District

GOVERNMENT

**Tabel 2.6** Jumlah Pegawai Kecamatan/Desa/Kelurahan Menurut Status Pegawai di Kecamatan Kibin, 2017  
**Table** Number of Official of District/Village/Subdistrict by Status in Kibin District, 2017

Kecamatan/Desa/Kelurahan District/Village/Subdistrict	PNS Civil Servant		Tenaga Honorer Temporary Employee		Tenaga Kerja Sukarela (TKS) Volunteer	
	L/M	P/F	L/M	P/F	L/M	P/F
(1)	(2)	(3)	(4)	(5)	(6)	(7)
Kecamatan Kibin /Kibin District	11	1	-	-	3	1
1. Nagara	1	-	7	1	-	-
2. Cijeruk	1	-	8	-	-	-
3. Barengkok	1	-	5	3	-	-
4. Nambo Ilir	1	-	8	-	-	-
5. Kibin	1	-	8	-	-	-
6. Tambak	1	-	6	2	-	-
7. Ciagel	1	-	8	-	-	-
8. Ketos	1	-	7	1	-	-
9. Sukamaju	1	-	8	-	-	-
Jumlah	20	1	65	7	3	-

Sumber/ Source: Kantor Kecamatan Kibin / Office of Kibin District

**Tabel 2.7 Jumlah Pegawai Kecamatan/Desa/Kelurahan Menurut Pendidikan di Kecamatan Kibin, 2017**  
**Number of Official of District/Village/Subdistrict by Level of Education in Kibin District, 2017**

Kecamatan/Desa/Kelurahan District/Village/Subdistrict	SLTP Junior High School		SLTA High School		Akademi/PT Academy/University	
	L/M	P/ F	L/M	P/ F	L/M	P/ F
(1)	(2)	(3)	(4)	(5)	(6)	(7)
Kecamatan Kibin /Kibin District	-	-	6	-	9	1
1. Nagara	-	-	8	-	-	1
2. Cijeruk	-	-	9	-	-	-
3. Barengkok	-	-	6	-	-	3
4. Nambo Ilir	-	-	7	-	2	-
5. Kibin	-	-	7	-	2	-
6. Tambak	-	-	9	-	-	-
7. Ciagel	-	-	9	-	-	-
8. Ketos	-	-	9	-	-	-
9. Sukamaju	-	-	9	-	-	-
<b>Jumlah/Total</b>	-	-	<b>79</b>	-	<b>13</b>	<b>5</b>

Sumber/ Source: Kantor Desa dan Kecamatan Kibin / Village Offices and Office of Kibin District

GOVERNMENT

**Tabel 2.8 Jumlah Pegawai Kecamatan/Desa/Kelurahan Menurut Jabatan di Kecamatan Kibin, 2017**  
**Number of Official of District/Village/Subdistrict by Position in Kibin District, 2017**

Kecamatan/Desa/Kelurahan District/Village/Subdistrict	Camat/KepalaDesa Chief of District/Village		Sekcam/Sekdes Secretary of District/Village		Kasi Section Chief		Staf Staffs	
	L/M	P/ F	L/M	P/ F	L/M	P/ F	L/M	P/ F
(1)	(2)	(3)	(4)	(5)	(6)	(7)	(8)	(9)
Kecamatan Kibin /Kibin District	1	-	1	-	3	1	9	1
1. Nagara	1	-	1	-	6	-	-	1
2. Cijeruk	1	-	1	-	6	-	1	-
3. Barengkok	-	1	1	-	4	2	-	1
4. Nambo Ilir	1	-	1	-	6	-	1	-
5. Kibin	1	-	1	-	6	-	1	-
6. Tambak	1	-	1	-	6	-	-	1
7. Ciagel	1	-	1	-	6	-	1	-
8. Ketos	-	1	1	-	6	-	-	1
9. Sukamaju	-	1	1	-	6	-	1	-
<b>Jumlah</b>	<b>7</b>	<b>3</b>	<b>10</b>	<b>-</b>	<b>55</b>	<b>3</b>	<b>14</b>	<b>5</b>

Sumber/ Source: Kantor Desa dan Kecamatan Kibin / Village Offices and Office of Kibin District



# **3** KEPENDUDUKAN *POPULATION*

<https://serangkab.bpt.go.id>





## POPULATION

**Tabel 3.1** Jumlah Penduduk Menurut Jenis Kelamin dan Rasio Jenis Kelamin di Kecamatan Kibin, 2017  
*Population by Sex and Sex Ratio in Kibin District, 2017*

Desa/Kelurahan Village/Subdistrict	Laki-laki Male	Perempuan Female	Jumlah Total	Rasio Jenis Kelamin Sex ratio
(1)	(2)	(3)	(4)	(5)
1. Nagara	2.591	2.123	4.714	122,0443
2. Cijeruk	4.368	4.278	8.646	102,1038
3. Barengkok	2.664	7.418	10.082	35,91264
4. Nambo Ilir	1.868	1.798	3.666	103,8932
5. Kibin	5.216	6.509	11.725	80,1352
6. Tambak	4.338	11.558	15.896	37,53245
7. Ciagel	3.664	4.280	7.944	85,60748
8. Ketos	2.741	2.689	5.430	101,9338
9. Sukamaju	1.867	1.625	3.492	114,8923
<b>Jumlah/ Total</b>	29.317	42.278	71.595	69,34339

Sumber/Source : BPS Kabupaten Serang/ BPS – Statistics of Serang Regency

**Tabel 3.2 Penduduk Menurut Kelompok Umur di Kecamatan Kibin, 2017**  
**Table**  
**Population by Age Group in Kibin District, 2017**

Kelompok Umur(Tahun) <i>Age Group (Year)</i>	Laki-laki <i>Male</i>	Perempuan <i>Female</i>	Jumlah <i>Total</i>
(1)	(2)	(3)	(4)
0 – 4	2.536	2.567	5.103
5 – 9	2.414	2.247	4.661
10 – 14	2.188	2.166	4.354
15 – 19	2.293	3.973	6.266
20 – 24	3.560	11.616	15.176
25 – 29	3.875	6.646	10.521
30 – 34	3.335	3.890	7.225
35 – 39	2.387	2.219	4.606
40 – 44	1.815	1.783	3.598
45 – 49	1.522	1.443	2.965
50 – 54	1.159	1.276	2.435
55 – 59	915	948	1.863
60 – 64	714	730	1.444
65 – 69	361	480	841
70 – 74	213	301	514
75+	174	233	407
<b>Jumlah/ Total</b>	<b>29.461</b>	<b>42.518</b>	<b>71,155</b>

Sumber/Source: BPS Kabupaten Serang/ BPS – Statistics of Serang Regency

EDUCATION

<https://serangkab.bps.go.id>

**4** *EDUCATION*  
**PENDIDIKAN**



EDUCATION

**Tabel 4.1** Jumlah Sekolah, Guru dan Murid Madrasah Aliyah di Kecamatan Kibin, 2017  
**Table** Number of School, Teacher and Student of Playgroup in Kibin District, 2017

Desa/Kelurahan Village/Subdistrict	Sekolah School		Guru Teacher		Murid Student	
	Negeri State	Swasta Private	L / M	P / F	L / M	P / F
(1)	(2)	(3)	(4)	(5)	(6)	(7)
1. Nagara	-	-	-	-	-	-
2. Cijeruk	-	-	-	-	-	-
3. Barengkok	-	-	-	-	-	-
4. Nambo Ilir	-	-	-	-	-	-
5. Kibin	-	1	-	-	23	21
6. Tambak	-	-	-	-	-	-
7. Ciagel	-	-	-	-	-	-
8. Ketos	-	-	-	-	-	-
9. Sukamaju	-	-	-	-	-	-
<b>Kibin</b>	-	<b>1</b>	-	-	<b>23</b>	<b>21</b>

Sumber/ Source: KCD Pendidikan Kecamatan Kibin/ Head of Kibin District Education Unit

**Tabel 4.2** Jumlah Sekolah, Guru dan Murid Raudhatul Athfal di Kecamatan Kibin, 2017  
**Table** Number of Schools, Pupils, and Teachers of Islamic Kindergarten in Kibin District, 2017

Desa/Kelurahan Village/Subdistrict	Sekolah School		Guru Teacher		Murid Student	
	Negeri State	Swasta Private	L / M	P / F	L / M	P / F
(1)	(2)	(3)	(4)	(5)	(6)	(7)
1. Nagara	-	-	-	-	-	-
2. Cijeruk	-	-	-	-	-	-
3. Barengkok	-	-	-	-	-	-
4. Nambo Iilir	-	1	-	4	16	18
5. Kibin	-	-	-	-	-	-
6. Tambak	-	-	-	-	-	-
7. Ciagel	-	-	-	-	-	-
8. Ketos	-	-	-	-	-	-
9. Sukamaju	-	-	-	-	-	-
<b>Kibin</b>	-	<b>1</b>	-	<b>4</b>	<b>16</b>	<b>18</b>

Sumber/ Source: KCD Pendidikan Kecamatan Kibin/ Head of Kibin District Education Unit

EDUCATION

**Tabel 4.3** Jumlah Sekolah, Guru dan Murid Taman Kanak-kanak (TK) di Kecamatan Kibin, 2017  
**Table** *Number of Schools, Pupils, and Teachers of Kindergarten in Kibin District, 2017*

Desa/Kelurahan Village/Subdistrict	Sekolah School		Guru Teacher		Murid Student	
	Negeri State	Swasta Private	L / M	P / F	L / M	P / F
(1)	(2)	(3)	(4)	(5)	(6)	(7)
1. Nagara	-	-	-	-	-	-
2. Cijeruk	-	1	1	4	14	19
3. Barengkok	-	-	-	-	-	-
4. Nambo Ilir	-	-	-	-	-	-
5. Kibin	-	1	1	3	12	11
6. Tambak	-	-	-	-	-	-
7. Ciagel	-	-	-	-	-	-
8. Ketos	-	-	-	-	-	-
9. Sukamaju	-	1	2	2	10	10
<b>Kibin</b>	-	<b>3</b>	<b>4</b>	<b>9</b>	<b>36</b>	<b>40</b>

Sumber/ Source: KCD Pendidikan Kecamatan Kibin/ Head of Kibin District Education Unit



**Tabel 4.4** Jumlah Sekolah, Guru dan Murid Sekolah Dasar (SD) di Kecamatan Kibin, 2017  
**Table** *Number of Schools, Pupils, and Teachers of Elementary School in Kibin District, 2017*

Desa/Kelurahan Village/Subdistrict	Sekolah School		Guru Teacher		Murid Student	
	Negeri State	Swasta Private	L / M	P / F	L / M	P / F
(1)	(2)	(3)	(4)	(5)	(6)	(7)
1. Nagara	2	-	9	5	206	189
2. Cijeruk	2	-	7	12	380	355
3. Barengkok	2	-	5	10	301	273
4. Nambo Ilir	3	-	9	13	304	300
5. Kibin	3	1	9	16	336	318
6. Tambak	2	1	9	14	371	287
7. Ciagel	2	1	8	17	445	377
8. Ketos	2	-	7	4	99	120
9. Sukamaju	2	-	8	10	283	238
<b>Kibin</b>	<b>20</b>	<b>3</b>	<b>71</b>	<b>101</b>	<b>2725</b>	<b>2457</b>

Sumber/ Source: KCD Pendidikan Kecamatan Kibin/ Head of Kibin District Education Unit

EDUCATION

**Tabel 4.5** Jumlah Sekolah, Guru dan Murid Madrasah Ibtidaiyah (MI) di Kecamatan Kibin, 2017  
**Table** *Number of Schools, Pupils, and Teachers of Islamic Elementary School in Kibin District, 2017*

Desa/Kelurahan Village/Subdistrict	Sekolah School		Guru Teacher		Murid Student	
	Negeri State	Swasta Private	L / M	P / F	L / M	P / F
(1)	(2)	(3)	(4)	(5)	(6)	(7)
1. Nagara	-	-	-	-	-	-
2. Cijeruk	-	-	-	-	-	-
3. Barengkok	-	-	-	-	-	-
4. Nambo Ilir	-	-	-	-	-	-
5. Kibin	-	1	3	2	61	59
6. Tambak	-	-	-	-	-	-
7. Ciagel	-	-	-	-	-	-
8. Ketos	-	-	-	-	-	-
9. Sukamaju	-	-	-	-	-	-
<b>Kibin</b>	-	<b>1</b>	<b>3</b>	<b>2</b>	<b>61</b>	<b>59</b>

Sumber/ Source: KCD Pendidikan Kecamatan Kibin/ Head of Kibin District Education Unit

**Tabel 4.6** Jumlah Sekolah, Murid, dan Guru Sekolah Menengah Pertama (SMP) di Kecamatan Kibin, 2017  
**Table** Number of Schools, Pupils, and Teachers of Junior High School in Kibin District, 2017

Desa/Kelurahan Village/Subdistrict	Sekolah School		Guru Teacher		Murid Student	
	Negeri State	Swasta Private	L / M	P / F	L / M	P / F
(1)	(2)	(3)	(4)	(5)	(6)	(7)
1. Nagara	-	1	6	4	46	44
2. Cijeruk	1	-	3	9	151	139
3. Barengkok	-	-	-	-	-	-
4. Nambo Ilir	-	-	-	-	-	-
5. Kibin	1	2	21	28	434	457
6. Tambak	-	1	5	5	20	19
7. Ciagel	-	1	4	8	131	93
8. Ketos	-	-	-	-	-	-
9. Sukamaju	-	-	-	-	-	-
<b>Kibin</b>	<b>2</b>	<b>5</b>	<b>39</b>	<b>54</b>	<b>782</b>	<b>752</b>

Sumber/ Source: KCD Pendidikan Kecamatan Kibin/ Head of Kibin District Education Unit

EDUCATION

**Tabel 4.7** Jumlah Sekolah, Guru dan Murid Madrasah Tsanawiyah (MTs) di Kecamatan Kibin, 2017  
**Table** Number of Schools, Pupils, and Teachers of Islamic Junior High School in Kibin District, 2017

Desa/Kelurahan Village/Subdistrict	Sekolah School		Guru Teacher		Murid Student	
	Negeri State	Swasta Private	L / M	P / F	L / M	P / F
(1)	(2)	(3)	(4)	(5)	(6)	(7)
1. Nagara	-	-	-	-	-	-
2. Cijeruk	-	-	-	-	-	-
3. Barengkok	-	-	-	-	-	-
4. Nambo Ilir	-	1	12	2	37	27
5. Kibin	-	2	13	9	113	92
6. Tambak	-	1	10	5	17	15
7. Ciagel	-	-	-	-	-	-
8. Ketos	-	-	-	-	-	-
9. Sukamaju	-	-	-	-	-	-
<b>Kibin</b>	-	<b>4</b>	<b>35</b>	<b>16</b>	<b>167</b>	<b>134</b>

Sumber/ Source: KCD Pendidikan Kecamatan Kibin/ Head of Kibin District Education Unit

**Tabel 4.8** Jumlah Sekolah, Guru dan Murid Sekolah Menengah Umum (SMU) di Kecamatan Kibin, 2017  
**Table** *Number of Schools, Pupils, and Teachers of High School in Kibin District, 2017*

Desa/Kelurahan Village/Subdistrict	Sekolah School		Guru Teacher		Murid Student	
	Negeri State	Swasta Private	L / M	P / F	L / M	P / F
(1)	(2)	(3)	(4)	(5)	(6)	(7)
1. Nagara	-	-	-	-	-	-
2. Cijeruk	-	-	-	-	-	-
3. Barengkok	-	-	-	-	-	-
4. Nambo Ilir	-	-	-	-	-	-
5. Kibin	1	1	28	22	316	591
6. Tambak	-	-	-	-	-	-
7. Ciagel	-	-	-	-	-	-
8. Ketos	-	-	-	-	-	-
9. Sukamaju	-	-	-	-	-	-
<b>Kibin</b>	<b>1</b>	<b>1</b>	<b>28</b>	<b>22</b>	<b>316</b>	<b>591</b>

Sumber/ Source: KCD Pendidikan Kecamatan Kibin/ Head of Kibin District Education Unit

**Tabel 4.9** Jumlah Sekolah, Guru dan Murid Sekolah Menengah Kejuruan (SMK) di Kecamatan Kibin, 2017  
**Table** Number of Schools, Pupils, and Teachers of Vocational High School in Kibin District, 2017

Desa/Kelurahan Village/Subdistrict	Sekolah School		Guru Teacher		Murid Student	
	Negeri State	Swasta Private	L / M	P / F	L / M	P / F
(1)	(2)	(3)	(4)	(5)	(6)	(7)
1. Nagara	-	1	7	4	52	32
2. Cijeruk	-	-	-	-	-	-
3. Barengkok	-	-	-	-	-	-
4. Nambo Ilir	-	-	-	-	-	-
5. Kibin	-	1	12	18	349	270
6. Tambak	-	1	1	0	20	11
7. Ciagel	-	1	10	9	350	216
8. Ketos	-	-	-	-	-	-
9. Sukamaju	-	-	-	-	-	-
<b>Kibin</b>	-	4	30	31	771	529

Sumber/ Source: KCD Pendidikan Kecamatan Kibin/ Head of Kibin District Education Unit

**Tabel 4.10** Jumlah Lembaga Kursus, Pengajar dan Siswa di Kecamatan Kibin, 2017  
**Table** *Number of Course Institutions, Instructors and Students in Kibin District, 2017*

Jenis Kursus/ Keterampilan <i>Type of Course</i>	Lembaga <i>Institutions</i>	Pengajar <i>Instructor</i>		Siswa <i>Student</i>	
		L / M	P / F	L / M	P / F
(1)	(3)	(3)	(4)	(5)	(6)
1. Komputer	2	-	-	-	-
2. Bahasa Asing	1	-	-	-	-
<b>Jumlah/ Total</b>	3	-	--	-	-

Sumber/ Source: UPTD Pendidikan dan Lembaga Kursus/ Education Unit of Kibin District and Courses Institutions

EDUCATION

**Tabel 4.11 Jumlah Pesantren, Kyai dan Santri di Kecamatan Kibin, 2017**  
**Table Number of Islamic Boarding Schools, Clerics and Students in Kibin District, 2017**

Desa/Kelurahan Village/Subdistrict	Pesantren Islamic Boarding School	Kyai/Ustadz/Pengajar Cleric/Lecturer		Santri Students	
		L / M	P / F	L / M	P / F
(1)	(3)	(3)	(4)	(5)	(6)
1. Nagara	-	-	-	-	-
2. Cijeruk	-	-	-	-	-
3. Barengkok	-	-	-	-	-
4. Nambo Ilir	-	-	-	-	-
5. Kibin	-	2	20	23	386
6. Tambak	-	-	-	-	-
7. Ciagel	-	1	20	15	391
8. Ketos	-	-	-	-	-
9. Sukamaju	-	-	-	-	-
<b>Jumlah</b>	-	<b>3</b>	<b>40</b>	<b>38</b>	<b>777</b>

Sumber/ Source: Pesantren dan KUA Kecamatan Kibin / Islamic Boarding Schools and Office of Religious Affairs of Kibin District



# 5

KESEHATAN DAN KB

*HEALTH AND BIRTH CONTROL*

<https://serangkab.bps.go.id>



**Tabel 5.1 Jumlah Sarana Kesehatan di Kecamatan Kibin, 2017**  
**Table Number of Health Facilities in Kibin District, 2017**

Desa/Kelurahan Village/Subdistrict	RumahSakit Hospital	Rumah Bersalin Maternity Hospital	Poliklinik/ Balai Pengobatan Policlinic/Clinic	Puskesmas/ Puskesmas Pembantu Public Health Center
(1)	(3)	(3)	(4)	(5)
1. Nagara	-	-	-	-
2. Cijeruk	-	1	1	-
3. Barengkok	-	-	2	-
4. Nambo Ilir	-	3	4	-
5. Kibin	-	1	10	1
6. Tambak	-	-	5	-
7. Ciagel	-	2	2	-
8. Ketos	-	-	-	-
9. Sukamaju	-	1	1	-
<b>Jumlah/ Total</b>	-	<b>8</b>	<b>25</b>	<b>1</b>

**Lanjutan tabel/ Continued table 5.1**

Desa/Kelurahan Village/Subdistrict	Tempat Praktek Dokter Doctor's Office	Tempat Praktek Bidan Midwife Practices	Poskesdes Village Health Center	Polindes Village Maternity Center
(1)	(6)	(7)	(8)	(9)
1. Nagara	-	1	-	-
2. Cijeruk	1	2	-	1
3. Barengkok	2	1	-	1
4. Nambo Ilir	2	2	-	1
5. Kibin	4	3	-	1
6. Tambak	2	1	-	-
7. Ciagel	1	1	-	-
8. Ketos	2	1	-	1
9. Sukamaju	-	1	-	-
<b>Jumlah/ Total</b>	<b>14</b>	<b>13</b>	<b>1</b>	<b>5</b>

Lanjutan tabel/ *Continued table 5.1*

Desa/Kelurahan <i>Village/Subdistrict</i>	Posyandu <i>Integrated Health Center</i>	Apotek <i>Pharmacy</i>	Toko Khusus Obat/Jamu <i>Drugstore</i>
(1)	(10)	(11)	(12)
1. Nagara	4	-	-
2. Cijeruk	4	-	-
3. Barengkok	4	-	1
4. Nambo Ilir	6	1	-
5. Kibin	6	-	1
6. Tambak	4	1	1
7. Ciagel	4	-	-
8. Ketos	4	-	-
9. Sukamaju	4	1	1
<b>Jumlah/ Total</b>	<b>40</b>	<b>3</b>	<b>4</b>

Sumber/ *Source*: Kantor Desa Se Kecamatan Kibin/ *Village Offices in Kibin District*

HEALTH AND BIRTH CONTROL

**Tabel 5.2 Jumlah Tenaga Kesehatan di Kecamatan Kibin, 2017**  
**Table Number of Health Worker in Kibin District, 2017**

Tenaga Kesehatan Health Worker	Laki-Laki Male	Prempuan Female	Jumlah Total
(1)	(2)	(3)	(4)
Dokter Umum / <i>General Practitioner</i>	-	2	2
Dokter Gigi / <i>Dentist</i>	-	1	1
Dokter Spesialis / <i>Medical Specialist</i>	-	-	-
Bidan / <i>Midwife</i>	-	15	15
Perawat / <i>Nurse Practitioner</i>	4	4	8
Analisis Kesehatan / <i>Registered Nurse</i>	-	1	1
Dukun Bayi Terlatih / <i>Trained TBA (Traditional Birth Attendant)</i>	-	32	32
Dukun Bayi Tidak Terlatih / <i>Untrained TBA (Traditional Birth Attendant)</i>	-	-	-
Ahli Gizi / <i>Nutritionist</i>	-	-	-
Apoteker / <i>Pharmacist</i>	-	-	-
Tenaga Kesehatan lain / <i>Other Health Worker</i>	2	3	5
<b>Jumlah/ Total</b>	<b>6</b>	<b>58</b>	<b>64</b>

Sumber/ Source: Puskesmas Kecamatan Kibin / *Public Health Center of Kibin District*

**Tabel 5.3 Jumlah Pasien Menurut Jenis Penyakit di Puskesmas Kecamatan Kibin, 2017**  
**Number of Patients by Type of Disease in Public Health Center of Kibin District, 2017**

	Jenis Penyakit <i>Disease</i>	Jumlah Pasien <i>Patients</i>	Persentase (%) <i>Percentage (%)</i>
	(1)	(2)	(3)
1.	Cough	2024	22,26377736
2.	Acute Nasopharyngitis (common cold)	848	9,327906721
3.	Essential (primary) hypertension	629	6,918930811
4.	Headache	1561	17,17082829
5.	Gastritis, unspecified	843	9,272907271
6.	Myalgia	1150	12,6498735
7.	Fever with chills	1246	13,70586294
8.	Tuberculosis of lung	23	0,25299747
9.	Unspecified diabetes mellitus without complication	19	0,20899791
10.	Acute Laryngopharyngitis	748	8,227917721

Sumber/ Source: Puskesmas Kecamatan Kibin / Public Health Center of Kibin District

## HEALTH AND BIRTH CONTROL

**Tabel 5.4 Target dan Realisasi Imunisasi di Kecamatan Kibin, 2017**  
**Table Targets and Realization of Vaccination in Kibin District, 2017**

Desa/Kelurahan Village/Subdistrict	BCG		DPT – HB 1	
	Target Target	Realisasi Realization	Target Target	Realisasi Realization
(1)	(2)	(3)	(4)	(5)
1. Nagara	98%	103,9	95%	101
2. Cijeruk	98%	106,5	95%	11,9
3. Barengkok	98%	114,3	95%	100
4. Nambo Ilir	98%	119	95%	112,1
5. Kibin	98%	97,5	95%	103,3
6. Tambak	98%	69,1	95%	75,9
7. Ciagel	98%	93,5	95%	110
8. Ketos	98%	94,6	95%	98,1
9. Sukamaju	98%	104,3	95%	105,5
<b>Kibin</b>				



Lanjutan tabel/ *Continued table 5.4*

Desa/Kelurahan <i>Village/Subdistrict</i>	DPT 2		DPT 3	
	Target <i>Target</i>	Realisasi <i>Realization</i>	Target <i>Target</i>	Realisasi <i>Realization</i>
(1)	(6)	(7)	(8)	(9)
1. Nagara	93%	101	90%	107
2. Cijeruk	93%	109,9	90%	111,9
3. Barengkok	93%	97,8	90%	96,8
4. Nambo Ilir	93%	115,7	90%	116,4
5. Kibin	93%	100	90%	102,7
6. Tambak	93%	77,6	90%	88
7. Ciagel	93%	104,6	90%	98,5
8. Ketos	93%	97,2	90%	112,1
9. Sukamaju	93%	123,9	90%	114,7
<b>Kibin</b>				

HEALTH AND BIRTH CONTROL

**Lanjutan tabel/ *Continued table 5.4***

Desa/Kelurahan <i>Village/Subdistrict</i>	Campak		Polio	
	Target <i>Target</i>	Realisasi <i>Realization</i>	Target <i>Target</i>	Realisasi <i>Realization</i>
(1)	(6)	(7)	(8)	(9)
1. Nagara	90%	103	90%	102
2. Cijeruk	90%	112,9	90%	108,9
3. Barengkok	90%	84,9	90%	96,8
4. Nambo Ilir	90%	112,9	90%	107,9
5. Kibin	90%	98	90%	99,3
6. Tambak	90%	83,3	90%	81,9
7. Ciagel	90%	99,2	90%	96,9
8. Ketos	90%	94,4	90%	94,4
9. Sukamaju	90%	112,8	90%	112,8
<b>Kibin</b>				

Sumber/ *Source*: Puskesmas Kecamatan Kibin / *Public Health Center of Kibin District*

**Tabel 5.5** Jumlah Kelahiran, Bayi Berat Lahir Rendah dan Balita/Anak Gizi Buruk diKecamatan Kibin, 2017  
**Number of Births, Low Birthweight Infants and Malnourished Child/Toddler in Kibin District, 2017**

Desa/Kelurahan <i>Village/Subdistrict</i>	Kelahiran / Births			Balita/Anak Gizi Buruk <i>Malnourished Child/Toddler</i>
	Lahir hidup <i>Live Birth</i>	Berat bayi Lahir Rendah(BBLR) <i>Low Birthweight Infants (LBW)</i>	% BBLR <i>% LBW</i>	
(1)	(2)	(3)	(4)	(5)
1. Nagara	110	-	-	-
2. Cijeruk	115	-	-	-
3. Barengkok	133	-	-	-
4. Nambo Ilir	155	-	-	-
5. Kibin	162	1	0,91	1
6. Tambak	338	-	-	-
7. Ciagel	139	4	4,1	1
8. Ketos	107	-	-	-
9. Sukamaju	108	1	0,91	1
<b>Kibin</b>	1.367	5	5,92	3

Sumber/ Source: Puskesmas Kecamatan Kibin / Public Health Center of Kibin District

HEALTH AND BIRTH CONTROL

**Tabel 5.6 Cakupan Kunjungan Ibu Hamil, K1 dan K2 diKecamatan Kibin, 2017**  
**Table Antenatal Care in Kibin District, 2017**

Desa/Kelurahan Village/Subdistrict	Ibu Hamil Expectant Mother	K1 Trimester 1	%	K2 Trimester 2	%
(1)	(2)	(3)	(4)	(5)	(6)
1. Nagara	106	116	109,4%	106	116
2. Cijeruk	108	116	107,4%	108	116
3. Barengkok	101	102	101%	101	102
4. Nambo Ilir	150	158	105%	150	158
5. Kibin	165	171	104%	165	171
6. Tambak	390	369	95%	390	369
7. Ciagel	144	149	109%	144	149
8. Ketos	117	117	100%	117	117
9. Sukamaju	121	125	107%	121	125
<b>Kibin</b>	<b>1.402</b>	<b>1.423</b>	<b>100%</b>	<b>1.402</b>	<b>1.423</b>

Sumber/ Source: Puskesmas Kecamatan Kibin / Public Health Center of Kibin District

**Tabel 5.7** Jumlah Persalinan yang Ditolong Tenaga Kesehatan di Kecamatan Kibin, 2017  
**Table** *Number of Births Assisted by Health Workers in Kibin District, 2017*

Desa/Kelurahan Village/Subdistrict	Target Target	Realisasi Realization	%
(1)	(2)	(3)	(4)
1. Nagara	102	110	108
2. Cijeruk	106	107	101
3. Barengkok	97	126	130
4. Nambo Ilir	141	155	110
5. Kibin	156	162	104
6. Tambak	374	328	88
7. Ciagel	137	142	103
8. Ketos	110	107	99,1
9. Sukamaju	115	117	102
<b>Kibin</b>	<b>1.338</b>	<b>1.354</b>	<b>945,1</b>

Sumber/ Source: Puskesmas Kecamatan Kibin / Public Health Center of Kibin District

## HEALTH AND BIRTH CONTROL

**Tabel 5.8** Jumlah Sarana Pelayanan KB diKecamatan Kibin, 2017  
**Table** Number of Birth Control Facilities in Kibin District, 2017

Desa/Kelurahan	KKB	PKBRS	Pos KB	Posyandu Integrated Health Center	Bidan Praktek Midwives
(1)	(2)	(3)	(4)	(5)	(6)
1. Nagara	-	-	4	4	1
2. Cijeruk	1	-	4	4	2
3. Barengkok	-	-	4	4	1
4. Nambo Ilir	-	-	6	6	2
5. Kibin	-	-	4	6	4
6. Tambak	-	-	4	4	1
7. Ciagel	1	-	4	4	2
8. Ketos	-	-	4	4	2
9. Sukamaju	-	-	4	4	2
<b>Kibin</b>	<b>2</b>	<b>-</b>	<b>38</b>	<b>40</b>	<b>17</b>

Sumber/ Source: Puskesmas Kecamatan Kibin / Public Health Center of Kibin District

**Tabel 5.9 Jumlah Pasangan Usia Subur (PUS) diKecamatan Kibin, 2017**  
**Table Number of Couples of Reproductive Age in Kibin District, 2017**

Desa/Kelurahan Village/Subdistrict	Jumlah Pasangan Usia Subur (PUS) Couples of Reproductive Age
(1)	(2)
1. Nagara	1.065
2. Cijeruk	1.217
3. Barengkok	925
4. Nambo Ilir	1.255
5. Kibin	1.213
6. Tambak	1.124
7. Ciagel	1.125
8. Ketos	782
9. Sukamaju	909
<b>Kibin</b>	<b>9.615</b>

Sumber/ Source: Pengawas PLKB Kecamatan Kibin / Supervisor of PLKB of Kibin District

**Tabel 5.10** Jumlah Peserta KB Lestari Menurut Kelompok Umur diKecamatan Kibin, 2017  
**Table** *Number of Participants of KB Lestari by Age Group in Kibin District, 2017*

Desa/Kelurahan Village/Subdistrict	Peserta KB Lestari Participants of KB Lestari			
	5 Tahun 5 Years	10 Tahun 10 Years	15 Tahun 15 Years	20 Tahun 20 Years
(1)	(2)	(3)	(4)	(5)
1. Nagara	18	15	4	3
2. Cijeruk	28	24	8	7
3. Barengkok	14	10	7	3
4. Nambo Ilir	22	16	7	5
5. Kibin	21	14	8	6
6. Tambak	23	19	13	4
7. Ciagel	26	21	11	4
8. Ketos	13	12	10	6
9. Sukamaju	15	7	4	3
<b>Kibin</b>	<b>180</b>	<b>138</b>	<b>72</b>	<b>41</b>

Sumber/ Source: Pengawas PLKB Kecamatan Kibin/ Supervisor of PLKB of Kibin District



**Tabel 5.11 Jumlah Akseptor KB Menurut Alat/Cara Kontrasepsi diKecamatan Kibin, 2017**  
***Number of Family Planning (KB) Acceptor by Birth Control Methods in Kibin District, 2017***

Desa/Kelurahan Village/Subdistrict	IUD	MOP/MOW	Implant
(1)	(2)	(3)	(4)
1. Nagara	55	22/22	70
2. Cijeruk	47	6/19	52
3. Barengkok	48	6/7	45
4. Nambo Ilir	64	25/19	66
5. Kibin	67	21/12	77
6. Tambak	62	7/10	73
7. Ciagel	77	23/26	65
8. Ketos	39	7/13	68
9. Sukamaju	53	13/8	58
<b>Kibin</b>	<b>512</b>	<b>130/136</b>	<b>574</b>

**Lanjutan tabel/ Continued table 5.12**

Desa/Kelurahan Village/Subdistrict	Suntik Injection	Pil Pill	Kondom Condom	Lainnya Others
(1)	(2)	(3)	(4)	(5)
1. Nagara	426	98	8	-
2. Cijeruk	409	106	10	-
3. Barengkok	375	87	11	-
4. Nambo Ilir	535	97	17	-
5. Kibin	515	66	10	-
6. Tambak	556	78	13	-
7. Ciagel	531	99	8	-
8. Ketos	345	81	7	-
9. Sukamaju	365	95	9	-
<b>Kibin</b>	<b>4.057</b>	<b>807</b>	<b>93</b>	

Sumber/ Source: Pengawas PLKB Kecamatan Kibin / Supervisor of PLKB of Kibin District

# 6

SOSIAL LAINNYA

*OTHER SOCIAL AFFAIRS*

<https://serangkab.bps.go.id>



**Tabel 6.1** Jumlah Keluarga Menurut Tahapan Keluarga Sejahtera di Kecamatan Kibin, 2017  
**Table** Number of Families by Prosperity Level in Kibin District, 2017

Desa/Kelurahan Village/Subdistrict	Pra KS	KS I	KS II	KS III	KS IIIPlus
(1)	(2)	(3)	(4)	(5)	(6)
1. Nagara	310	235	367	402	42
2. Cijeruk	140	637	507	295	43
3. Barengkok	236	247	302	388	69
4. Nambo Ilir	187	439	745	273	67
5. Kibin	296	396	498	458	123
6. Tambak	219	204	349	512	113
7. Ciagel	141	348	382	522	104
8. Ketos	247	250	231	218	32
9. Sukamaju	285	286	337	355	62
<b>Kibin</b>	<b>2.061</b>	<b>3.042</b>	<b>3.718</b>	<b>3.423</b>	<b>655</b>

Sumber/ Source: Pengawas PLKB Kecamatan Kibin / Supervisor of PLKB of Kibin District

OTHER SOCIAL AFFAIRS

**Tabel 6.2** **Persentase Jumlah Pemeluk Agama di Kecamatan Kibin, 2017**  
**Table** **Percentage of Believer in Kibin District, 2017**

Desa/Kelurahan Village/Subdistrict	Islam Islam	Katolik Catholic	Protestan Protestant	Hindu Hindu	Budha Budha
(1)	(2)	(3)	(4)	(5)	(6)
1. Nagara	3.973	-	21	-	-
2. Cijeruk	4.760	-	-	-	-
3. Barengkok	3.884	-	-	-	-
4. Nambo Ilir	6.926	-	-	-	-
5. Kibin	6.729	-	21	2	-
6. Tambak	6.561	20	894	50	51
7. Ciagel	4.634	-	-	-	-
8. Ketos	3.337	-	-	-	-
9. Sukamaju	4.312	-	-	-	-
<b>Kibin</b>	<b>45.116</b>	<b>20</b>	<b>936</b>	<b>52</b>	<b>51</b>

Sumber/ Source: KUA Kecamatan Kibin / Office of Religious Affairs of Kibin District

**Tabel 6.3** Jumlah Tempat Peribadatan di Kecamatan Kibin, 2017  
**Table** Number of Worship Facilities in Kibin District, 2017

Desa/Kelurahan Village/Subdistrict	Masjid Mosque	Mushola Musholla	Majlis'talim Majlis'talim	Geraja Church	Lainnya Others
(1)	(2)	(3)	(4)	(5)	(6)
1. Nagara	4	4	5	-	-
2. Cijeruk	4	3	3	-	-
3. Barengkok	4	2	2	-	-
4. Nambo Ilir	3	4	4	-	-
5. Kibin	4	10	10	-	-
6. Tambak	4	3	2	-	-
7. Ciagel	2	8	5	-	-
8. Ketos	9	3	4	-	-
9. Sukamaju	6	6	5	-	-
<b>Kibin</b>	<b>40</b>	<b>43</b>	<b>40</b>	-	-

Sumber/ Source: KUA Kecamatan Kibin / Office of Religious Affairs of Kibin District

OTHER SOCIAL AFFAIRS

**Tabel 6.4 Jumlah Pernikahan, Talak/Ceraï dan Rujuk Menurut Desa/Kelurahan di Kecamatan Kibin, 2017**  
**Number of Marriages, Separations/Divorces and Reconciliations by Village/Subdistrict in Kibin District, 2017**

Desa/Kelurahan Village/Subdistrict	Nikah Marriage	Talak Separation	Ceraï Divorce	Rujuk Reconciliation
(1)	(2)	(3)	(4)	(5)
1. Nagara	38	-	-	-
2. Cijeruk	40	-	-	-
3. Barengkok	39	-	-	-
4. Nambo Ilir	64	-	-	-
5. Kibin	66	-	-	-
6. Tambak	54	-	-	-
7. Ciagel	56	-	-	-
8. Ketos	39	-	-	-
9. Sukamaju	50	-	-	-
<b>Kibin</b>	<b>446</b>	-	-	-

Sumber/ Source: KUA Kecamatan Kibin / Office of Religious Affairs of Kibin District



**Tabel 6.5 Jumlah Permasalahan Sosial Menurut Jenis di Kecamatan Kibin, 2017**  
**Table Number of Social Problems in Kibin District, 2017**

Jenis PMKS <i>Social Problem</i>	2015	2016
(1)	(2)	(3)
Anak Terlantar / <i>Neglected Children</i>	37	22
Anak Nakal / <i>Scapegrace</i>	-	-
Lansia/Jompo / <i>Elderly</i>	-	72
Korban Narkotika / <i>Drug Abuser</i>	-	1
Penyangang Cacat / <i>People with Disability</i>	72	81
Gelandangan dan Pengemis / <i>Beggar</i>	2	2
Wanita Pekerja Sex Komersial / <i>Commercial Sex Worker</i>	-	-
Fakir Miskin/Keluarga Miskin / <i>Poor</i>	2.666	4.010
Anak Jalanan / <i>Street Children</i>	-	-
Wanita Rawan Sosial Ekonomi	381	405
Anak Balita Terlantar / <i>Neglected Toddler</i>	-	-
Anak Korban Kekerasan / <i>Children Victims of Violence</i>	-	-
Wanita Korban Tindak Kekerasan / <i>Women Victims of Violence</i>	-	-
Lansia Korban Tindak Kekerasan <i>Elder Victims of Violence</i>	-	-
Eksnarapidana / <i>Ex-Convict</i>	-	-
Kelurga Berumah Tidak Layak Huni / <i>Families with Uninhabitable House</i>	-	-

Sumber/ Source: Dinas Sosial Kabupaten Serang / *Social Services of Serang Regency*

**Tabel 6.6 Banyaknya Fasilitas Olahraga Menurut Desa/Kelurahan di Kecamatan Kibin, 2017**  
**Table**  
**Number of Sport Facilities in Kibin District, 2017**

Desa/Kelurahan Village/Subdistrict	Sepak Bola Soccer	Bola Voli Volley Ball	BuluTangkis Badminton	Tenis Meja Table Tennis	Lap. Tennis Tennis	Lap. Futsal Futsal
(1)	(2)	(3)	(4)	(5)	(6)	(7)
1. Nagara	1	1	-	-	-	-
2. Cijeruk	-	-	-	-	-	1
3. Barengkok	1	1	1	1	-	-
4. Nambo Ilir	1	1	1	1	-	-
5. Kibin	1	1	-	1	-	1
6. Tambak	-	1	1	1	-	1
7. Ciagel	-	1	1	1	-	-
8. Ketos	-	-	-	1	-	-
9. Sukamaju	-	-	-	-	-	-
<b>Kibin</b>	<b>4</b>	<b>6</b>	<b>4</b>	<b>6</b>	<b>-</b>	<b>3</b>

Sumber/ Source: Kantor Desa Se Kecamatan Kibin/Village Offices in Kibin District

<https://serangkab.bps.go.id>

# 7

PERTANIAN

*AGRICULTURE*

<https://serangkab.go.id>



**Tabel 7.1 Luas Lahan Sawah dan Pertanian Bukan Sawah di Kecamatan Kibin, 2017**  
**Table Area of Wetland and Dryland Field in Kibin District, 2017**

	Jenis Lahan <i>Land</i>	Luas Lahan (Ha) <i>Total Area (Ha)</i>	Persentase (%) <i>Percentage (%)</i>
	(1)	(2)	(3)
<b>1.</b>	<b>Lahan Sawah / <i>Wetland</i></b>	<b>1.228</b>	<b>100%</b>
a.	Irigasi Teknis / <i>Wetland with Technical Irrigation</i>	915	74%
b.	Irigasi Setengah Teknis / <i>Wetland with Semi Technical Irrigation</i>	-	-
c.	Irigasi Sederhana / <i>Wetland with Simple Irrigation</i>	-	-
d.	Irigasi Desa / <i>Wetland with Village Irrigation</i>	-	-
e.	Tadah Hujan / <i>Rainfed Wetland</i>	313	25,4%
f.	Pasang surut, Polder, Rembesan dan Rawa / <i>Tides, Polder, Seepage and Swamp</i>	-	-
g.	Sementara Tidak Diusahakan / <i>Temporarily Unused</i>	-	-
<b>2.</b>	<b>Lahan Pertanian Bukan Sawah / <i>Dryland Field</i></b>	<b>1.751</b>	<b>100%</b>
a.	Ladang, huma, tegal, dan kebun / <i>Dryland Paddy Fields</i>	270	15,4
b.	Perkebunan / <i>Farms</i>	-	-
c.	Perkarangan, lahan bangunan dan halaman / <i>Gardens, Buildings, Yards</i>	891	50,9%
d.	Hutan Rakyat / <i>Forest</i>	-	-
e.	Rawa, Tambak, Kolom, empang / <i>Swamps, Ponds</i>	545	31,1%
f.	Lainnya / <i>Others</i>	45	2,5%
g.	Lahan tidur / <i>Uncultivated Land</i>	-	-
	<b>Jumlah</b>	<b>2.979</b>	<b>100%</b>

Sumber/ Source: KCD Pertanian Kecamatan Kibin / *Agriculture Unit in Kibin District*

**Tabel 7.2 Luas Panen dan Produksi Tanaman Padi dan Palawija di Kecamatan Kibin, 2017**  
**Table** *Harvested Area and Production of Rice and Coarse Grains, Pulses, Roots and Tuber (CGPRT) Crops in Kibin District, 2017*

Jenis Tanaman Crops		Luas Panen (Ha) Harvested Area (Ha)	Produksi (Ton) Production (Ton)	Produktivitas (Ton/Ha) Productivity (Ton/Ha)
(1)	(2)	(3)	(4)	
1.	Padi			
a.	Padi Sawah / <i>Wetland Rice</i>	1.830	10.614	5,8
b.	Padi Ladang / <i>Dryland Rice</i>	-	-	-
2.	Palawija			
a.	Jagung / <i>Corn</i>	6	23	3,8
b.	Ketela pohon / <i>Cassava</i>	8	49	6,1
c.	Ketela Rambut / <i>Sweet Potato</i>	2	11	5,6
d.	Kacang Tanah / <i>Peanut</i>	2	9	4,3
e.	Kacang Hijau / <i>Mungbean</i>	-	-	-
f.	Kedelai / <i>Soy bean</i>	-	-	-

Sumber/ Source: KCD Pertanian Kecamatan Kibin / Agriculture Unit in Kibin District

**Tabel 7.3 Luas Tanam dan Produksi Sayuran di Kecamatan Kibin, 2017**  
**Table Planted Area and Production of Vegetables in Kibin District, 2017**

Jenis Tanaman	Luas Tanaman(Ha) <i>Planted Area (Ha)</i>	Luas Panen(Ha) <i>Harvested Area (Ha)</i>	Produksi (Kw) <i>Production (Qu)</i>
(1)	(2)	(3)	
1. Bawang Merah / <i>Shallot</i>	-	-	-
2. Bawah Putih / <i>Garlic</i>	-	-	-
3. Dawun Bawang / <i>Scallion</i>	-	-	-
4. Petsai / Sawi / <i>Mustard Green</i>	-	-	-
5. Kacang Panjang / <i>Yardlong Bean</i>	7	16,8	2,4
6. Kacang Merah / <i>Kidney Bean</i>	-	-	-
7. Tomat / <i>Tomato</i>	1	-	-
8. Terung / <i>Eggplant</i>	3	3,6	1,2
9. Buncis / <i>Green Bean</i>	-	-	-
10. Ketimun / <i>Cucumber</i>	6	-	-
11. Kangkung / <i>Water Spinach</i>	2	1,2	0,6
12. Bayam / <i>Spinach</i>	2	1,2	0,6
13. LabuSiam / <i>Chayote</i>	-	-	-
14. Cabe Rawit / <i>Bird's Eye Chili</i>	5	5,5	1,1
15. Cabe Merah / <i>Chili</i>	10	18	1,8
16. Talas / <i>Taro</i>	-	-	-
17. Ganyong / <i>Canna</i>	-	-	-
18. Jamur / <i>Mushroom</i>	-	-	-

Sumber/ Source: KCD Pertanian Kecamatan Kibin / *Agriculture Unit in Kibin District*



**Tabel 7.4 Luas Tanam dan Produksi Buah-buahan di Kecamatan Kibin, 2017**  
**Table Planted Area and Production of Fruits in Kibin District, 2017**

	Jenis Tanaman <i>Fruit</i>	Jumlah Pohon / <i>Trees</i>		Produksi(Kw) <i>Production (Qu)</i>
		Seluruhnya <i>All Trees</i>	Menghasilkan <i>Productive Trees</i>	
	(1)	(2)	(3)	(4)
1.	Alpukat / <i>Avocado</i>	21	7	12,5
2.	Belimbing / <i>Star Fruit</i>	150	25	23,6
3.	Duku / <i>Langsat / Lanzone</i>	-	-	-
4.	Durian / <i>Durian</i>	-	-	-
5.	Jambu Biji / <i>Guava</i>	1.619	388	40,5
6.	Jambu Air / <i>Water Apple</i>	46	5	14,6
7.	Jeruk / <i>Orange</i>	82	16	20,5
8.	Mangga / <i>Mango</i>	2.475	354	19,2
9.	Manggis / <i>Mangosteen</i>	-	-	-
10.	Nangka / <i>Jackfruit</i>	586	38	16,9
11.	Nanas / <i>Pineapple</i>	-	-	-
12.	Pepaya / <i>Papaya</i>	3.846	2.098	20,79
13.	Pisang / <i>Banana</i>	3.486	2.300	23,90
14.	Rambutan / <i>Rambutan</i>	22	5	21,4
15.	Salak / <i>Snake Fruit</i>	-	-	-
16.	Sawo / <i>Sapodilla</i>	60	5	19,20
17.	Sirsak / <i>Soursop</i>	151	19	-
18.	Sukun / <i>Breadfruit</i>	489	130	-
19.	Melinjo / <i>Melinjo</i>	2.632	1.561	15,8
20.	Petai / <i>Stink Bean</i>	33	8	30,5
21.	Jengkol / <i>Dogfruit</i>	-	-	-
22.	Melon / <i>Melon</i>	-	-	-
23.	Semangka / <i>Watermelon</i>	-	-	-

Sumber/ *Source*: KCD Pertanian Kecamatan Kibin / *Agriculture Unit in Kibin District*

**Tabel 7.5 Luas Panen dan Produksi Tanaman Obat-obatan di Kecamatan Kibin, 2017**  
**Table Harvested Area and Production of Medicinal Plants in Kibin District, 2017**

	Jenis Tanaman <i>Medicinal Plants</i>	Luas Panen(Ha) <i>Harvested Area (Ha)</i>	Produksi(Kw) <i>Production (Qu)</i>
	(1)	(2)	(4)
1.	Jahe / <i>Ginger</i>	-	-
2.	Kunyit / <i>Turmeric</i>	50	12,5
3.	Kencur / <i>Sand Ginger</i>	-	-
4.	Lempuyang / <i>Pinecone Ginger</i>	120	12
5.	Temu Kunci / <i>Fingerroot</i>	-	-
6.	Kapolaga / <i>Cardamom</i>	-	-
7.	Lengkuas / <i>Galangal</i>	625	40,9
8.	Sembiloto / <i>Green Chiretta</i>	-	-
9.	Temulawak / <i>Temulawak</i>	-	-
10.	Keji Beling / <i>Keji Beling</i>	-	-
11.	Lidah Buaya / <i>Aloe Vera</i>	25	-
12.	Mahkota Dewa / <i>Mahkota Dewa</i>	-	-
13.	Mengkudu / <i>Morinda</i>	425	90,5
14.	Dlinggo / <i>Acorus Calamus</i>	-	-

Sumber/ Source: KCD Pertanian Kecamatan Kibin / *Agriculture Unit in Kibin District*

**Tabel 7.6 Luas Area dan Produksi Perkebunan Rakyat di Kecamatan Kibin, 2017**  
**Table** *Planted Area and Production of Smallholder Plantation in Kibin District, 2017*

Jenis Tanaman <i>Plant</i>	Luas Tanaman(Ha) <i>Planted Area (Ha)</i>	Produksi(Kw) <i>Production (Qu)</i>
(1)	(2)	(3)
1. Karet / <i>Rubber Tree</i>	-	-
2. Kopi / <i>Coffee</i>	-	-
3. Kelapa / <i>Coconut</i>	26	13
4. Cengkeh / <i>Clove</i>	-	-
5. Lada / <i>Pepper</i>	-	-
6. Kapuk / <i>Kapok</i>	-	-
7. Kakao / <i>Cocoa</i>	-	-
8. Panili / <i>Vanilla</i>	-	-
9. Pala / <i>Nutmeg</i>	-	-
10. Melinjo / <i>Melinjo</i>	-	-
11. Jambu Mede / <i>Cashew Tree</i>	-	-
12. Kemiri / <i>Candlenut</i>	-	-
13. Aren / <i>Sugar Palm</i>	-	-
14. Jarak Pagar / <i>Nettlespurge</i>	-	-

Sumber/ *Source*: KCD Pertanian Kecamatan Kibin / *Agriculture Unit in Kibin District*

## AGRICULTURE

**Tabel 7.7** **Populasi Ternak dan Unggas di Kecamatan Kibin, 2017**  
**Table** **Population of Livestock and Poultry in Kibin District, 2017**

Jenis Ternak <i>Livestock</i>	Populasi (Ekor) <i>Population</i>
(1)	(2)
Sapi Potong / <i>Cow</i>	-
Sapi Perah / <i>Dairy Cow</i>	-
Kerbau / <i>Buffalo</i>	308
Kuda / <i>Horse</i>	1
Kambing / <i>Goat</i>	2.700
Domba / <i>Sheep</i>	450
Ayam Ras Pedaging / <i>Broiler Chicken</i>	12.056
Ayam Ras Petelur / <i>Laying Hens</i>	9.870
Ayam Buras / <i>Chicken</i>	18.008
Itik / <i>Duck</i>	11.342

Sumber/ *Source*: KCD Pertanian Kecamatan Kibin / *Agriculture Unit in Kibin District*

**Tabel 7.8 Jumlah Kelompok Tani di Kecamatan Kibin, 2017**  
**Table Number of Farmers Group in Kibin District, 2017**

Desa/Kelurahan Village/Subdistrict	Jenis Kelompok Tani / Farmers Group				Jumlah Total
	Pemula Novice	Lanjutan Intermediate	Madya Advance	Utama Expert	
(1)	(2)	(4)	(5)	(6)	(7)
1. Nagara	-	4	2	2	8
2. Cijeruk	-	-	3	2	5
3. Barengkok	1	1	1	-	3
4. Nambo Ilir	-	2	-	1	3
5. Kibin	-	1	2	1	4
6. Tambak	-	1	1	-	2
7. Ciagel	-	2	2	2	6
8. Ketos	-	4	4	1	9
9. Sukamaju	1	2	1	1	5
<b>Kibin</b>	<b>2</b>	<b>17</b>	<b>16</b>	<b>10</b>	<b>45</b>

Sumber/ Source: KCD Pertanian Kecamatan Kibin / Agriculture Unit in Kibin District

AGRICULTURE

**Tabel 7.9** **Kelompok Tani dan Anggota di Kecamatan Kibin, 2017**  
**Table** **Farmers Group and Its Members in Kibin District, 2017**

Desa/Kelurahan Village/Subdistrict	Jumlah Kelompok Tani Farmers Group	Anggota Members
(1)	(2)	(3)
1. Nagara	8	223
2. Cijeruk	5	134
3. Barengkok	3	82
4. Nambo Ilir	3	75
5. Kibin	4	109
6. Tambak	2	50
7. Ciagel	6	174
8. Ketos	9	272
9. Sukamaju	5	189
<b>Kibin</b>	<b>45</b>	<b>1.308</b>

# 8

**INDUSTRI DAN PENGGALIAN**

***INDUSTRY AND EXCAVATION***

<https://serang.kab.go.id>





**Tabel 8.1** Jumlah Perusahaan dan Tenaga Kerja Industri Menengah dan Besar Menurut Jenis Industri di Kecamatan Kibin, 2017  
**Table** *Number of Medium/Large Manufacturing Establishment and Employees by Kind of Manufacturing in Kibin District, 2017*

Jenis Industri <i>Manufacturing Industry</i>	Industri Menengah (Tenaga Kerja 20-99) <i>Medium Manufacturing Establishment (20-99 Employees)</i>		Industri Besar (Tenaga Kerja ≥100) <i>Large Manufacturing Establishment (≥100 Employees)</i>	
	Usaha/Prusahaan <i>Establishment</i>	TanagaKerja <i>Employee</i>	Usaha/Prusahaan <i>Establishment</i>	TanagaKerja <i>Employee</i>
(1)	(2)	(3)	(4)	(5)
1. Makanan, Minuman dan Rokok <i>Food, Beverage and Tobacco</i>	5	304	1	959
2. Tekstil, Pakaian jadi dan kulit <i>Textile, Clothing and Leather Goods</i>	2	132	6	34.239
3. Kayu dan barang dari kayu, termasuk alat dari kayu <i>Woods and Wooden Goods, including Wooden Tools</i>	-	-	2	300
4. Kertas, barang dari kertas, percetakan dan penerbitan <i>Paper, Paper Goods, Printing and Publishing</i>	2	128	2	300
5. Kimia, barang dari komia, minyak bumi, batu bara , karet dan barang dari pelastik <i>Chemical, Chemical Goods, Petroleum, Coal, Rubber and Plastic Goods</i>	16	766	7	1.796
6. Barang galian bukan logam kecuali minyak bumi <i>Nonmetallic Minerals except Petroleum</i>	-	-	2	742
7. Logam dasar / <i>Basic Metals</i>	1	58	1	117
8. Barang dari logam, mesin dan peralatan <i>Metal Goods, Machines and Tools</i>	7	354	5	1.185
9. Pengolahan lainnya <i>Other Manufacturing Industries</i>	8	389	5	2.274
<b>Jumlah</b>	<b>41</b>	<b>2.131</b>	<b>33</b>	<b>42.225</b>

Sumber/ Source: Kantor Desa Se Kecamatan Kibin/Village Offices in Kibin District

# 9

**PERDAGANGAN, HOTEL DAN  
RESTORAN**  
*TRADE, HOTEL AND  
RESTAURANT*

<https://serangkabupdf.com/id>



**Tabel 9.1** Jumlah Restoran dan Toko Kelontong di Kecamatan Kibin, 2017  
**Table** Number of Restaurants and Stores in Kibin District, 2017

Desa/Kelurahan Village/Subdistrict	Restoran/Rumah Makan Restaurants	Warung/ Kedai Makanan, Minuman Small Shops	Toko/ Warung Kelontong Convenience Stores
(1)	(2)	(3)	(4)
1. Nagara	-	86	-4
2. Cijeruk	-	489	20
3. Barengkok	-	234	5
4. Nambo Ilir	15	147	10
5. Kibin	10	298	13
6. Tambak	12	581	27
7. Ciagel	-	248	8
8. Ketos	-	99	3
9. Sukamaju	-	241	5
<b>Kibin</b>	<b>37</b>	<b>2.423</b>	<b>95</b>

Sumber/ Source: Kantor Desa Se Kecamatan Kibin/Village Offices in KibinDistrict



# DATA

MENCERDASKAN BANGSA



**BADAN PUSAT STATISTIK  
KABUPATEN SERANG**

Jln. Desa Kaserangan - Pengampelan  
Telp. (0254) 292360 email : [bps3604@bps.go.id](mailto:bps3604@bps.go.id)  
Homepage : <http://www.serangkab.bps.go.id>