

KECAMATAN WARINGINKURUNG DALAM ANGKA

Waringinkurung District In Figures

2017



**BADAN PUSAT STATISTIK
KABUPATEN SERANG**
STATISTICS OF SERANG REGENCY

<http://serangkab.bps.go.id>

KECAMATAN WARINGINKURUNG DALAM ANGKA

Waringinkurung District In Figures

2017



Kecamatan Waringinkurung dalam Angka

Waringinkurung District in Figures

2017

No. Publikasi/Publication Number: 3604.180.1720

Katalog/Catalog: 1102001.3604.180

Ukuran Buku/Book Size: 14,8 cm x 21 cm

Jumlah Halaman/Number of Pages: xix + 72 halaman /pages

Naskah/Manuscript:

Badan Pusat Statistik Kabupaten Serang

BPS-Statistics of Serang Regency

Bastian Komara (KSK Kecamatan Waringinkurung)

Gambar Cover oleh/Cover Designed by:

Badan Pusat Statistik Kabupaten Serang

BPS-Statistics of Serang Regency

Ilustrasi Cover/Cover Illustration:

Tanaman Melinjo

Diterbitkan oleh/Published by:

© BPS Kabupaten Serang/*BPS-Statistics of Serang Regency*

Dicetak oleh/Printed by:

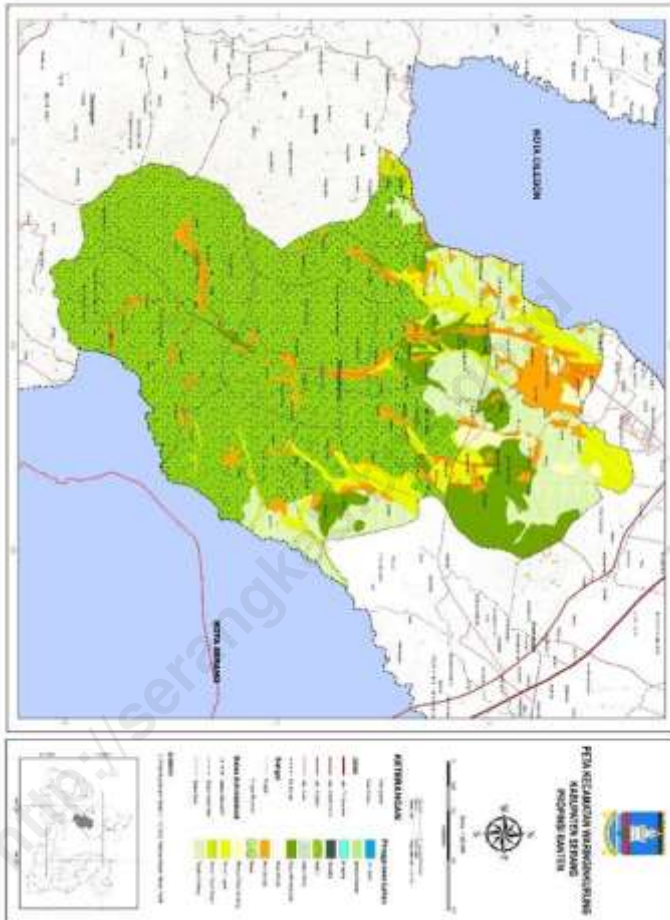
BPS Kabupaten Serang/*BPS-Statistics of Serang Regency*

**Dilarang mengumumkan, mendistribusikan, mengomunikasikan, dan/atau
menggandakan sebagian atau seluruh isi buku ini untuk tujuan komersial tanpa izin
tertulis dari Badan Pusat Statistik**

*Prohibited to announce, distribute, communicate, and/or copy part or all of this book
for commercial purpose without permission from BPS-Statistics Indonesia*

Peta Wilayah Kecamatan Waringinkurung

Map Of Waringinkurung District



<http://serangkab.bps.go.id>

Kepala BPS Kabupaten Serang
CHIEF STATISTICIAN OF SERANG REGENCY



Ir. Indra Warman

<http://serangkab.bps.go.id>



KATA PENGANTAR

Ketersediaan data yang memadai sampai dengan tingkat wilayah/region yang lebih kecil seperti Kecamatan dan Desa/Kelurahan banyak dibutuhkan oleh pengguna data dalam melihat potensi dan mengevaluasi hasil-hasil pelaksanaan pembangunan ditingkat wilayah tersebut.

Publikasi Kecamatan Waringinkurung Dalam Angka Tahun 2017 adalah salah satu upaya kami untuk menyajikan data sampai tingkat desa. Diharapkan data yang disajikan dapat memenuhi kebutuhan berbagai pihak, sebagai salah satu acuan untuk melihat potensi dan hasil-hasil pembangunan di Kecamatan Waringinkurung

Walaupun publikasi ini telah disiapkan secermat mungkin, namun disadari masih terdapat kekurangan-kekurangan. Untuk itu segala saran sangat diharapkan agar penerbitan publikasi dimasa mendatang dapat lebih baik dan tepat waktu.

Kepada rekan-rekan Dinas/Instansi yang ada di Kecamatan Waringinkurung dan kepada semua pihak yang telah membantu kelancaran dalam penyusunan publikasi ini, kami ucapkan banyak terima kasih.

Serang, September 2017
Kepala Badan Pusat Statistik
Kabupaten Serang

Ir. Indra Warman



PREFACE

The availability of adequate data up to smaller level of area/region such as District and Village/Subdistrict is much needed by data user in order to see the potential and to evaluate the result of the developments in that particular region.

The publication of Waringinkurung District In Figures 2017 is one of our effort to present the data up to village level. We hope the data presented can meet the needs of various parties, as a reference to see the potential and development results in Waringinkurung District.

Although this publication has been prepared as thoroughly as possible, but we realize there are still shortcomings. Therefore we appreciate any suggestion for better future publications.

To our fellow Departments/Institutions in Waringinkurung District and to all of those who have helped the preparation of this publication, we convey our gratitude.

Serang, September 2017

*Chief Statistician of
Serang Regency*

Ir. Indra Warman

DAFTAR ISI/CONTENTS

	halaman page
Peta Wilayah Kecamatan Waringinkurung	iii
<i>Map Of Waringinkurung District</i>	iii
<i>Chief Statistician Of Serang Regency</i>	v
Kata Pengantar	vii
<i>Preface</i>	viii
Daftar Isi/ <i>Contents</i>	ix
Daftar Tabel/ <i>List Of Tables</i>	xi
Penjelasan Umum/ <i>Explanatory Notes</i>	xviii
1 Geografi	1
Geography	1
2 Pemerintahan	7
Government	7
3 Kependudukan	15
Population	15
4 Pendidikan	21
Education	21
5 Kesehatan dan KB	29
Health and Birth Control	29
6 Sosial Lainnya	47
Other Social Affairs	47
7 Pertanian	57
Agriculture	57
8 Industri dan Penggalan	65
Industry and Excavation	65
9 Perdagangan, Hotel dan Restoran	69
Trade, Hotel and Restaurant	69

<http://serangkab.bps.go.id>

DAFTAR TABEL/LIST OF TABLES

	halaman <i>page</i>
1 GEOGRAFI	1
GEOGRAPHY	1
1.1 Luas Wilayah Desa/Kelurahan di Kecamatan Waringinkurung, 2016.....3 Total Area by Village/Subdistrict in Waringinkurung District, 2016.....3	
1.2 Letak Geografis Desa/Kelurahan di Kecamatan Waringinkurung, 2016.....4 Geographical Location of Village/Subdistrict in Waringinkurung District, 2016.....4	
1.3 Topografi Desa/Kelurahan di Kecamatan Waringinkurung, 20165 Topography of Village/Subdistrict in Waringinkurung District, 20165	
1.4 Jarak Antar Desa/Kelurahan di Kecamatan Waringinkurung, 2016.....6 Distances Between Villages/Subdistricts in Waringinkurung District, 20166	
2 PEMERINTAHAN	7
GOVERNMENT	7
2.1 Status Pemerintahan dan Pembagian Wilayah Administrasi Desa/Kelurahan di Kecamatan Waringinkurung, 2016.....9 Governmental Status and Administrative Area Division of Village/Subdistrict in Waringinkurung District, 20169	
2.2 Status Perdesaan dan Perkotaan Desa/Kelurahan di Kecamatan Waringinkurung, 201610 Urban and Rural Status of Village/Subdistrict in Waringinkurung District, 2016.....10	
2.3 Status Pemerintahan Desa/Kelurahan di Kecamatan Waringinkurung, 201611 Governmental Status of Village/Subdistrict in Waringinkurung District, 2016.....11	

2.4	Kepemilikan Kantor Pemerintahan Desa/Kelurahan dan Badan Perwakilan Desa/Dewan Kelurahan di Kecamatan Waringinkurung, 2016.....	12
	Ownership of Government Office and Council of Village/ Subdistrict in Waringinkurung District, 2016	12
2.5	Kategori Desa/Kelurahan Menurut Tingkat Perkembangan di Kecamatan Waringinkurung, 2016.....	13
	Categories of Village/Subdistrict by Level of Development in Waringinkurung District, 2016	13
2.6	Jumlah Pegawai Kecamatan/Desa/Kelurahan Menurut Status Pegawai di Kecamatan Waringinkurung, 2016.....	14
	Number of Official of District/Village/Subdistrict by Status in Waringinkurung District, 2016	14
3	KEPENDUDUKAN	15
	POPULATION	15
3.1	Jumlah Penduduk Menurut Jenis Kelamin dan Rasio Jenis Kelamin di Kecamatan Waringinkurung, 2016.....	17
	Population by Sex and Sex Ratio in Waringinkurung District, 2016.....	17
3.2	Penduduk Menurut Kelompok Umur di Kecamatan Waringinkurung, 2016.....	18
	Population by Age Group in Waringinkurung District, 2016.....	18
3.3	Angka Kelahiran dan Kematian Menurut Desa/Kelurahan dan Jenis Kelamin di Kecamatan Waringinkurung, 2016	19
	Infant Mortality and Natality Rate by Village/Subdistrict in Waringinkurung District, 2016	19
4	PENDIDIKAN	21
	EDUCATION	21
4.1	Jumlah Sekolah, Guru dan Murid Sekolah Dasar (SD) di Kecamatan Waringinkurung, 2016.....	23
	Number of Schools, Pupils, and Teachers of Elementary School in Waringinkurung District, 2016	23
4.2	Jumlah Sekolah, Guru dan Murid Madrasah Ibtidaiyah (MI) di Kecamatan Waringinkurung, 2016.....	24

Number of Schools, Pupils, and Teachers of Islamic Elementary School in Waringinkurung District, 2016.....	24
4.3 Jumlah Sekolah, Murid, dan Guru Sekolah Menengah Pertama (SMP) di Kecamatan Waringinkurung, 2016.....	25
Number of Schools, Pupils, and Teachers of Junior High School in Waringinkurung District, 2016.....	25
4.4 Jumlah Sekolah, Guru dan Murid Madrasah Tsanawiyah (MTs) di Kecamatan Waringinkurung, 2016	26
Number of Schools, Pupils, and Teachers of Islamic Junior High School in Waringinkurung District, 2016.....	26
4.5 Jumlah Sekolah, Guru dan Murid Sekolah Menengah Umum (SMU) di Kecamatan Waringinkurung, 2016	27
Number of Schools, Pupils, and Teachers of High School in Waringinkurung District, 2016.....	27
4.6 Jumlah Sekolah, Guru dan Murid Madrasah Aliyah (MA) di Kecamatan Waringinkurung, 2016	28
Number of Schools, Pupils, and Teachers of Islamic High School in Waringinkurung District, 2016.....	28
5 KESEHATAN DAN KB	29
HEALTH AND BIRTH CONTROL	29
5.1 Jumlah Sarana Kesehatan di Kecamatan Waringinkurung, 2016	31
Number of Health Facilities in Waringinkurung District, 2016.....	31
5.2 Jumlah Tenaga Kesehatan di Kecamatan Waringinkurung, 2016.....	34
Number of Health Worker in Waringinkurung District, 2016	34
5.3 Laporan 20 Besar Penyakit Rawat Jalan di Puskesmas Kecamatan Waringinkurung, 2016	35
20 Patients by Type of Disease in Public Health Center of Waringinkurung District, 2016.....	35
5.4 Target dan Realisasi Imunisasi di Kecamatan Waringinkurung, 2016	37
Targets and Realization of Vaccination in Waringinkurung District, 2016	37
5.5 Jumlah Kelahiran, Bayi Berat Lahir Rendah dan Balita/Anak Gizi Buruk di Kecamatan Waringinkurung, 2016	40
Number of Births, Low Birthweight Infants and Malnourished Child/Toddler in Waringinkurung District, 2016.....	40

5.6	Cakupan Kunjungan Ibu Hamil, K1 dan K4 di Kecamatan Waringinkurung, 2016.....	41
	Antenatal Care in Waringinkurung District, 2016	41
5.7	Jumlah Persalinan yang Ditolong Tenaga Kesehatan di Kecamatan Waringinkurung, 2016.....	42
	Number of Births Assisted by Health Workers in Waringinkurung District, 2016.....	42
5.8	Jumlah Sarana Pelayanan KB di Kecamatan ..., 2016	43
	Number of Birth Control Facilities in ... District, 2016	43
5.9	Jumlah Pasangan Usia Subur (PUS) di Kecamatan Waringinkurung, 2016.....	44
	Number of Couples of Reproductive Age in Waringinkurung District, 2016	44
5.10	Jumlah Akseptor KB Menurut Alat/Cara Kontrasepsi di Kecamatan Waringinkurung, 2016.....	45
	Number of Family Planning (KB) Acceptor by Birth Control Methods in Waringinkurung District, 2016	45
6	SOSIAL LAINNYA	47
	OTHER SOCIAL AFFAIRS	47
6.1	Jumlah dan Persentase Keluarga Penerima Bantuan Program Keluarga Harapan (PKH) di Kecamatan Waringinkurung, 2016	49
	Number and Percentage of Recipient of Program Keluarga Harapan (PKH) in Waringinkurung District, 2016	49
6.2	Persentase Bangunan Tempat Tinggal Sehat / Rumah Sehat di Kecamatan Waringinkurung, 2016.....	50
	Percentage of Healthy Residential Buildings in Waringinkurung District, 2016.....	50
6.3	Persentase Jumlah Pemeluk Agama di Kecamatan Waringinkurung, 2016.....	51
	Percentage of Believer in Waringinkurung District, 2016.....	51
6.4	Jumlah Tempat Peribadatan di Kecamatan Waringinkurung, 2016....	52
	Number of Worship Facilities in Waringinkurung District, 2016	52
6.5	Jumlah Pernikahan Menurut Desa/Kelurahan di Kecamatan Waringinkurung, 2016.....	53

Number of Marriages, Separations/Divorces and Reconciliations by Village/Subdistrict in Waringinkurung District, 2016	53
6.6 Jumlah Permasalahan Sosial Menurut Jenis di Kecamatan Waringinkurung, 2012-2016.....	54
Number of Social Problems in Waringinkurung District, 2012-2016	54
6.7 Banyaknya Fasilitas Olahraga Menurut Desa/Kelurahan di Kecamatan Waringinkurung, 2016	55
Number of Sport Facilities in Waringinkurung District, 2016.....	55
7 PERTANIAN	57
AGRICULTURE	57
7.1 Luas Lahan Sawah dan Pertanian Bukan Sawah di Kecamatan Waringinkurung, 2016	59
Area of Wetland and Dryland Field in Waringinkurung District, 2016	59
7.2 Luas Tanam dan Produksi Sayuran di Kecamatan Waringinkurung, 2016.....	60
Planted Area and Production of Vegetables in Waringinkurung District, 2016	60
7.3 Luas Tanam dan Produksi Buah-buahan di Kecamatan Waringinkurung, 2016	61
Planted Area and Production of Fruits in Waringinkurung District, 2016.....	61
7.4 Luas Area dan Produksi Perkebunan Rakyat di Kecamatan Waringinkurung, 2016	62
Planted Area and Production of Smallholder Plantation in Waringinkurung District, 2016.....	62
7.5 Populasi Ternak dan Unggas di Kecamatan Waringinkurung, 2016	63
Population of Livestock and Poultry in Waringinkurung District, 2016	63
8 INDUSTRI DAN PENGGALIAN	65
INDUSTRY AND EXCAVATION	65
8.1 Jumlah Perusahaan dan Tenaga Kerja Industri Kecil dan Rumah Tangga di Kecamatan Waringinkurung, 2016.....	67
Number of Small/Household Manufacturing Establishment and Employees in Waringinkurung District, 2016.....	67
9 PERDAGANGAN, HOTEL DAN RESTORAN	69
TRADE, HOTEL AND RESTAURANT	69

9.1	Jumlah Restoran dan Toko Kelontong di Kecamatan Waringinkurung, 2016.....	71
	Number of Restaurants and Stores in Waringinkurung District, 2016	71
9.2	Jumlah Penginapan dan Hotel di Kecamatan Waringinkurung, 2016 .	72
	Number of Accommodations and Hotels in Waringinkurung District, 2016	72

<http://serangkab.bps.go.id>

<http://serangkab.bps.go.id>

PENJELASAN UMUM/EXPLANATORY NOTES

Tanda-tanda, satuan-satuan, dan lain-lainnya yang digunakan dalam publikasi ini adalah sebagai berikut:

Symbols, measurement units, and acronyms which are used in this publication, are as follows:

1. TANDA-TANDA/SYMBOLS

Data tidak tersedia/ <i>Data not available</i>	:	...
Tidak ada atau nol / <i>Null or zero</i>	:	—
Data dapat diabaikan/ <i>Data negligible</i>	:	0
Tanda decimal/ <i>Decimal point</i>	:	,
Data tidak dapat ditampilkan/ <i>Not applicable</i>	:	NA
Angka perkiraan/ <i>Estimated figures</i>	:	e
Angka sementara/ <i>Preliminary figures</i>	:	x
Angka sangat sementara/ <i>Very preliminary figures</i>	:	xx
Angka diperbaiki/ <i>Revised figures</i>	:	r

2. SATUAN/UNITS

barel/ <i>barrel</i>	:	158,99 liter/ <i>litres</i> = 1/6,2898 m ³
hektar (ha)/ <i>hectare (ha)</i>	:	10 000 m ²
kilometer (km)/ <i>kilometres (km)</i>	:	1 000 meter/ <i>meters</i> (m)
knot/ <i>knot</i>	:	1,8523 km/jam (km/hour)
kuintal/ <i>quintal</i>	:	100 kg
KWh	:	1 000 Watt <i>hour</i>
MWh	:	1 000 KWh
liter (untuk beras)/ <i>litre (for rice)</i>	:	0,80 kg
ons/ <i>ounce</i>	:	28,31 gram/ <i>grams</i>
ton	:	1 000 kg

Satuan lain: buah, dus, butir, helai/lembar, kaleng, batang, pulsa, ton kilometer (ton-km), jam, menit, persen (%).

Other units: unit, pack, pieces, sheet, tin, pulse, ton-kilometres(ton-km), hour, minute, percent (%).

Perbedaan angka di belakang koma disebabkan oleh pembulatan angka.

The difference in decimal numbers is caused by rounding.

<http://serangkab.bps.go.id>

<http://serangkab.bps.go.id>

1

GEOGRAFI GEOGRAPHY

<http://serangkab.bps.go.id>

Tabel 1.1 Luas Wilayah Desa/Kelurahan di Kecamatan Waringinkurung, 2016
Table Total Area by Village/Subdistrict in Waringinkurung District, 2016

Desa/Kelurahan Village/Subdistrict	Luas Wilayah (Km ²) Total Area (Km ²)	Persentase Percentage
(1)	(2)	(3)
1. Sasahan	3.50	8.88
2. Cokop Sulanjana	5.03	12.77
3. Telaga Luhur	3.84	9.75
4. Binangun	3.34	8.48
5. Kemuning	2.41	6.12
6. Sukabares	3.05	7.74
7. Sambilawang	4.34	11.02
8. Melati	3.32	8.43
9. Sampir	2.73	6.93
10. Waringinkurung	3.33	8.45
11. Sukadalem	4.50	11.42
Kec. Waringinkurung	39.39	100

Sumber/ Source: Peraturan Daerah Kab. Serang No. 16 Tahun 2001 tentang Pembentukan Kecamatan dan kelurahan / Regional Regulation of Serang Regency No. 16, 2001 on The Formation of District and Subdistrict

Tabel 1.2 Letak Geografis Desa/Kelurahan di Kecamatan Waringinkurung, 2016
Table Geographical Location of Village/Subdistrict in Waringinkurung District, 2016

Desa/Kelurahan Village/Subdistrict	Pantai Coastal	Bukan Pantai Non-Coastal		
		Lembah Valley	Kawasan Lereng Hillside	Dataran Plain Area
(1)	(2)	(3)	(4)	(5)
1. Sasahan		√		
2. Cokop Sulanjana			√	
3. Telaga Luhur			√	
4. Binangun			√	
5. Kemuning				√
6. Sukabares				√
7. Sambilawang				√
8. Melati			√	
9. Sampir			√	
10. Waringinkurung				√
11. Sukadalem				√

Sumber/ Source: Kantor Desa Se Kecamatan Waringinkurung/Village Offices in Waringinkurung District

Tabel 1.3 Topografi Desa/Kelurahan di Kecamatan Waringinkurung, 2016
Table
Topography of Village/Subdistrict in Waringinkurung District, 2016

Desa/Kelurahan Village/Subdistrict	Ketinggian dari Permukaan Laut (m) Altitude (m)	Kemiringan Lahan Slope		
		Landai Low ($< 15^\circ$)	Sedang Medium ($15^\circ-25^\circ$)	Curam High ($>25^\circ$)
(1)	(2)	(3)	(4)	(5)
1. Sasahan	35		√	
2. Cokop Sulanjana	74		√	
3. Telaga Luhur	73		√	
4. Binangun	35		√	
5. Kemuning	96	√		
6. Sukabares	49	√		
7. Sambilawang	52		√	
8. Melati	69		√	
9. Sampir	25		√	
10. Waringinkurung	60	√		
11. Sukadalem	50		√	

Sumber/ Source: Kantor Desa Se Kecamatan Waringinkurung/Village Offices in Waringinkurung District

Tabel 1.4 Jarak Antar Desa/Kelurahan di Kecamatan Waringinkurung, 2016
Table *Distances Between Villages/Subdistricts in Waringinkurung District, 2016*

Desa/ Kelurahan	Sasahan	Cokop Sulanjana	Telaga Luhur	Binangun	Kemuning	Sukabares	Sambilawang	Melati	Sampir	Waringinkurung	Sukadalem
(1)	(2)	(3)	(4)	(5)	(6)	(7)	(8)	(9)	(10)	(11)	(12)
Sasahan	-	3	5	3	13	12	7	13	13	9	12
Cokop Sulanjana	3	-	5	4	10	9	4	10	9	5	9
Telaga Luhur	5	5	-	3	14	13	8	14	14	9	13
Binangun	3	5	3	-	8	7	2	7	8	3	7
Kemuning	13	10	14	8	-	9	6	8	9	5	3
Sukabares	12	9	13	7	9	-	5	8	9	4	2
Sambilawang	7	4	8	2	6	5	-	3	3	1	5
Melati	13	10	14	7	8	8	3	-	3	4	8
Sampir	13	9	14	8	9	9	3	3	-	5	9
Waringinkurung	9	5	9	3	5	4	1	4	5	-	4
Sukadalem	12	9	13	7	3	2	5	8	9	4	-

Sumber/ Source: Kantor Desa Se Kecamatan Waringinkurung/Village Offices in Waringinkurung District

2 PEMERINTAHAN GOVERNMENT

<http://serangkab.bps.go.id>

Tabel 2.1 Status Pemerintahan dan Pembagian Wilayah Administrasi Desa/Kelurahan di Kecamatan Waringinkurung, 2016
Governmental Status and Administrative Area Division of Village/Subdistrict in Waringinkurung District, 2016

Desa/Kelurahan <i>Village/Subdistrict</i>	Status Pemerintahan <i>Governmental Status</i>	Dusun <i>Sub-village</i>	RW	RT
(1)	(2)	(3)	(4)	(5)
1. Sasahan	Desa	0	4	11
2. Cokop Sulanjana	Desa	0	3	9
3. Telaga Luhur	Desa	0	4	9
4. Binangun	Desa	0	5	13
5. Kemuning	Desa	0	3	7
6. Sukabares	Desa	0	3	9
7. Sambilawang	Desa	0	3	15
8. Melati	Desa	0	4	9
9. Sampir	Desa	0	3	10
10. Waringinkurung	Desa	0	9	43
11. Sukadalem	Desa	0	8	18
Kec. Waringinkurung		0	49	153

Sumber/ Source: Kantor Desa Se Kecamatan Waringinkurung/Village Offices in Waringinkurung District

Tabel 2.2 Status Perdesaan dan Perkotaan Desa/Kelurahan di Kecamatan Waringinkurung, 2016
Table *Urban and Rural Status of Village/Subdistrict in Waringinkurung District, 2016*

Desa/Kelurahan <i>Village/Subdistrict</i>	Perkotaan <i>Urban</i>	Perdesaan <i>Rural</i>
(1)	(2)	(3)
1. Sasahan		√
2. Cokop Sulanjana		√
3. Telaga Luhur		√
4. Binangun		√
5. Kemuning		√
6. Sukabares		√
7. Sambilawang		√
8. Melati		√
9. Sampir		√
10. Waringinkurung	√	
11. Sukadalem		√

Sumber/ Source: Kantor Kecamatan Waringinkurung / Office of Waringinkurung District

Tabel 2.3 Status Pemerintahan Desa/Kelurahan di Kecamatan Waringinkurung, 2016
Table *Governmental Status of Village/Subdistrict in Waringinkurung District, 2016*

Desa/Kelurahan <i>Village/District</i>	Status Pemerintahan <i>Governmental Status</i>	Ibu Kota <i>Capital</i>
(1)	(2)	(3)
1. Sasahan	Desa	Kp. Sigidug, Rt. 004 Rw. 02
2. Cokop Sulanjana	Desa	Kp. Baros, Rt. 002 Rw. 03
3. Telaga Luhur	Desa	Kp. Sidilem, Rt. 002 Rw. 01
4. Binangun	Desa	Kp. Cibangkong, Rt. 010 Rw. 05
5. Kemuning	Desa	Kp. Cimayang, Rt. 004 Rw. 02
6. Sukabares	Desa	Kp. Kubang Putih, Rt. 001 Rw. 01
7. Sambilawang	Desa	Kp. Setu Pasar, Rt. 001 Rw. 01
8. Melati	Desa	Kp. Kubang, Rt. 003 Rw. 01
9. Sampir	Desa	Kp. Jambu, Rt. 003 Rw. 001
10. Waringinkurung	Desa	Kp. Cibeka, Rt. 02 Rw. 03
11. Sukadalem	Desa	Kp. Begog Jaya, Rt. 018 Rw. 06

Sumber/ Source: Kantor Desa Se Kecamatan Waringinkurung/*Village Offices in Waringinkurung District*

Tabel 2.4 Kepemilikan Kantor Pemerintahan Desa/Kelurahan dan Badan Perwakilan Desa/Dewan Kelurahan di Kecamatan Waringinkurung, 2016
Ownership of Government Office and Council of Village/ Subdistrict in Waringinkurung District, 2016

Desa/Kelurahan <i>Village/Subdistrict</i>	Kantor Desa/Kelurahan <i>Village/Subdistrict Office</i>	Balai Desa <i>Village Meeting Hall</i>	BPD/DK <i>Village/Subdistrict Council</i>
(1)	(2)	(3)	(4)
1. Sasahan	√	√	√
2. Cokop Sulanjana	√	√	√
3. Telaga Luhur	√	√	√
4. Binangun	√	√	√
5. Kemuning	√	√	√
6. Sukabares	√	√	√
7. Sambilawang	√	√	√
8. Melati	√	√	√
9. Sampir	√	√	√
10. Waringinkurung	√	√	√
11. Sukadalem	√	√	√

Sumber/ Source: Kantor Desa Se Kecamatan Waringinkurung/*Village Offices in Waringinkurung District*

Tabel 2.5 Kategori Desa/Kelurahan Menurut Tingkat Perkembangan di Kecamatan Waringinkurung, 2016
Categories of Village/Subdistrict by Level of Development in Waringinkurung District, 2016

Desa/Kelurahan <i>Village/Subdistrict</i>	Swadaya	Swakarsa	Swasembada
(1)	(2)	(3)	(4)
1. Sasahan	-	√	-
2. Cokop Sulanjana	-	√	-
3. Telaga Luhur	-	√	-
4. Binangun	-	√	-
5. Kemuning	-	√	-
6. Sukabares	-	√	-
7. Sambilawang	-	√	-
8. Melati	-	√	-
9. Sampir	-	√	-
10. Waringinkurung	-	√	-
11. Sukadalem	-	√	-

Sumber/ Source: Kantor Kecamatan Waringinkurung / Office of Waringinkurung District

Tabel 2.6 Jumlah Pegawai Kecamatan/Desa/Kelurahan Menurut Status Pegawai di Kecamatan Waringinkurung, 2016
Table Number of Official of District/Village/Subdistrict by Status in Waringinkurung District, 2016

Kecamatan/Desa/Kelurahan District/Village/Subdistrict	PNS Civil Servant		Tenaga Honorer Temporary Employee		Tenaga Kerja Sukarela (TKS) Volunteer	
	L/M	P/F	L/M	P/F	L/M	P/F
(1)	(2)	(3)	(4)	(5)	(6)	(7)
Kecamatan Waringinkurung /Waringinkurung District	22	4	0	0	0	0
1. Sasahan	0	0	9	0	0	0
2. Cokop Sulanjana	0	0	8	1	0	0
3. Telaga Luhur	0	0	8	1	0	0
4. Binangun	0	0	9	0	0	0
5. Kemuning	0	0	8	1	0	0
6. Sukabares	0	0	8	1	0	0
7. Sambilawang	0	0	9	0	0	0
8. Melati	0	0	8	1	0	0
9. Sampir	0	0	8	1	0	0
10. Waringinkurung	0	0	6	3	0	0
11. Sukadalem	0	0	7	2	0	0
Jumlah	22	4	88	11	0	0

Sumber/ Source: Kantor Kecamatan Waringinkurung / Office of Waringinkurung District

3

KEPENDUDUKAN
POPULATION

<http://serangkab.bps.go.id>

Tabel 3.1 Jumlah Penduduk Menurut Jenis Kelamin dan Rasio Jenis Kelamin di Kecamatan Waringinkurung, 2016
Table Population by Sex and Sex Ratio in Waringinkurung District, 2016

Desa/Kelurahan Village/Subdistrict	Laki-laki Male	Perempuan Female	Jumlah Total	Rasio Jenis Kelamin Sex ratio
(1)	(2)	(3)	(4)	(5)
1. Sasahan	1.867	1.774	3.641	105
2. Cokop Sulanjana	1.147	1.076	2.223	106
3. Telaga Luhur	1.486	1.404	2.890	105
4. Binangun	1.835	1.744	3.579	105
5. Kemuning	1.705	1.617	3.322	105
6. Sukabares	1.791	1.698	3.489	105
7. Sambilawang	2.261	2.156	4.417	104
8. Melati	1.385	1.307	2.692	105
9. Sampir	1.280	1.204	2.484	106
10. Waringinkurung	3.809	3.661	7.470	104
11. Sukadalem	3.817	3.669	7.486	104
Jumlah/ Total	22.383	21.310	43.693	105

Sumber/ Source : BPS Kabupaten Serang/ BPS – Statistics of Serang Regency

POPULATION

Tabel 3.2 Penduduk Menurut Kelompok Umur di Kecamatan Waringinkurung, 2016
Table Population by Age Group in Waringinkurung District, 2016

Kelompok Umur (Tahun) <i>Age Group (Year)</i>	Laki-laki <i>Male</i>	Perempuan <i>Female</i>	Jumlah <i>Total</i>
(1)	(2)	(3)	(4)
0 – 4	2.241	2.130	4.371
5 – 9	2.276	2.340	4.616
10 – 14	2.305	2.150	4.455
15 – 19	2.201	1.925	4.126
20 – 24	2.019	1.749	3.768
25 – 29	1.784	1.707	3.491
30 – 34	1.877	1.824	3.701
35 – 39	1.765	1.684	3.449
40 – 44	1.641	1.598	3.239
45 – 49	1.397	1.170	2.567
50 – 54	1.021	975	1.996
55 – 59	708	762	1.470
60 – 64	520	594	1.114
65 – 69	328	376	704
70 – 74	186	213	399
75+	114	113	227
Jumlah/ Total	22.383	21.310	43.693

Sumber/ Source: BPS Kabupaten Serang/ BPS – Statistics of Serang Regency

Tabel 3.3 Angka Kelahiran dan Kematian Menurut Desa/Kelurahan dan Jenis Kelamin di Kecamatan Waringinkurung, 2016
Table *Infant Mortality and Natality Rate by Village/Subdistrict in Waringinkurung District, 2016*

Desa/Kelurahan Village/Subdistrict	Lahir Natality			Mati Mortality		
	Lk / M	Pr / F	Jml Sum	Lk / M	Pr / F	Jml Sum
(1)	(2)	(3)	(4)	(5)	(6)	(7)
1. Sasahan	41	33	74	0	0	0
2. Cokop Sulanjana	18	15	33	1	0	1
3. Telaga Luhur	22	26	48	0	0	0
4. Binangun	27	35	62	0	0	0
5. Kemuning	28	22	50	0	0	0
6. Sukabares	54	38	92	0	0	0
7. Sambilawang	39	37	76	0	0	0
8. Melati	20	32	52	0	0	0
9. Sampir	34	25	59	0	0	0
10. Waringinkurung	57	62	119	0	1	1
11. Sukadalem	54	51	105	1	1	2
Kec. Waringinkurung	394	376	770	2	2	4

Sumber/ Source: Puskesmas Kecamatan Waringinkurung / Public Health Center of Waringinkurung District

4

PENDIDIKAN
EDUCATION

<http://serangkab.bps.go.id>

Tabel 4.1 Jumlah Sekolah, Guru dan Murid Sekolah Dasar (SD) di Kecamatan Waringinkurung, 2016
Table *Number of Schools, Pupils, and Teachers of Elementary School in Waringinkurung District, 2016*

Desa/Kelurahan Village/Subdistrict	Sekolah School		Guru Teacher		Murid Student	
	Negeri State	Swasta Private	L / M	P / F	L / M	P / F
(1)	(2)	(3)	(4)	(5)	(6)	(7)
1. Sasahan	2	0	16		188	
2. Cokop Sulanjana	2	0	17		278	
3. Telaga Luhur	1	0	11		307	
4. Binangun	3	0	26		312	
5. Kemuning	1	0	16		456	
6. Sukabares	1	1	16		313	
7. Sambilawang	2	0	18		346	
8. Melati	3	0	28		311	
9. Sampir	1	0	11		243	
10. Waringinkurung	2	1	61		1.121	
11. Sukadalem	4	0	41		934	
Kec. Waringinkurung	22	2	261		4.809	

Sumber/ Source: Dinas Pendidikan dan Kebudayaan Kabupaten Serang/ Ministry of Culture and Education of Serang Regency

EDUCATION

Tabel 4.2 Jumlah Sekolah, Guru dan Murid Madrasah Ibtidaiyah (MI) di Kecamatan Waringinkurung, 2016
Table *Number of Schools, Pupils, and Teachers of Islamic Elementary School in Waringinkurung District, 2016*

Desa/Kelurahan Village/Subdistrict	Sekolah School		Guru Teacher		Murid Student	
	Negeri State	Swasta Private	L / M	P / F	L / M	P / F
(1)	(2)	(3)	(4)	(5)	(6)	(7)
1. Sasahan	0	1	1	6	57	45
2. Cokop Sulanjana	0	0	0	0	0	0
3. Telaga Luhur	0	0	0	0	0	0
4. Binangun	0	0	0	0	0	0
5. Kemuning	0	0	0	0	0	0
6. Sukabares	0	0	0	0	0	0
7. Sambilawang	0	1	6	5	76	85
8. Melati	0	0	0	0	0	0
9. Sampir	0	0	0	0	0	0
10. Waringinkurung	0	0	0	0	0	0
11. Sukadalem	0	0	0	0	0	0
Kec. Waringinkurung	0	2	7	11	133	130

Sumber/ Source: Kementerian Agama Kabupaten Serang/ Ministry of Religion of Serang Regency

Tabel 4.3 Jumlah Sekolah, Murid, dan Guru Sekolah Menengah Pertama (SMP) di Kecamatan Waringinkurung, 2016
Table Number of Schools, Pupils, and Teachers of Junior High School in Waringinkurung District, 2016

Desa/Kelurahan Village/Subdistrict	Sekolah School		Guru Teacher		Murid Student	
	Negeri State	Swasta Private	L / M	P / F	L / M	P / F
(1)	(2)	(3)	(4)	(5)	(6)	(7)
1. Sasahan	0	0	0		0	
2. Cokop Sulanjana	0	0	0		0	
3. Telaga Luhur	0	0	0		0	
4. Binangun	1	0	316		16	
5. Kemuning	0	0	0		0	
6. Sukabares	0	1	350		27	
7. Sambilawang	0	0	0		0	
8. Melati	0	0	0		0	
9. Sampir	0	0	0		0	
10. Waringinkurung	1	1	955		50	
11. Sukadalem	0	0	0		0	
Kec. Waringinkurung	2	2	1.621		93	

Sumber/ Source: Dinas Pendidikan dan Kebudayaan Kabupaten Serang/ Ministry of Culture and Education of Serang Regency

EDUCATION

Tabel 4.4 Jumlah Sekolah, Guru dan Murid Madrasah Tsanawiyah (MTs) di Kecamatan Waringinkurung, 2016
Table Number of Schools, Pupils, and Teachers of Islamic Junior High School in Waringinkurung District, 2016

Desa/Kelurahan Village/Subdistrict	Sekolah School		Guru Teacher		Murid Student	
	Negeri State	Swasta Private	L / M	P / F	L / M	P / F
(1)	(2)	(3)	(4)	(5)	(6)	(7)
1. Sasahan	0	0	0	0	0	0
2. Cokop Sulanjana	0	1	10	2	24	18
3. Telaga Luhur	0	1	14	6	164	142
4. Binangun	0	0	0	0	0	0
5. Kemuning	0	0	0	0	0	0
6. Sukabares	0	0	0	0	0	0
7. Sambilawang	0	1	6	1	85	86
8. Melati	0	0	0	0	0	0
9. Sampir	0	0	0	0	0	0
10. Waringinkurung	0	0	0	0	0	0
11. Sukadalem	0	1	11	6	72	96
Kec. Waringinkurung	0	4	41	15	345	342

Sumber/ Source: Kementerian Agama Kabupaten Serang/ Ministry of Religion of Serang Regency

Tabel 4.5 Jumlah Sekolah, Guru dan Murid Sekolah Menengah Umum (SMU) di Kecamatan Waringinkurung, 2016
Table *Number of Schools, Pupils, and Teachers of High School in Waringinkurung District, 2016*

Desa/Kelurahan Village/Subdistrict	Sekolah School		Guru Teacher		Murid Student	
	Negeri State	Swasta Private	L / M	P / F	L / M	P / F
(1)	(2)	(3)	(4)	(5)	(6)	(7)
1. Sasahan	0	0	0		0	
2. Cokop Sulanjana	0	0	0		0	
3. Telaga Luhur	0	0	0		0	
4. Binangun	0	0	0		0	
5. Kemuning	0	0	0		0	
6. Sukabares	0	1	6		151	
7. Sambilawang	0	0	0		0	
8. Melati	0	0	0		0	
9. Sampir	0	0	0		0	
10. Waringinkurung	1	1	47		740	
11. Sukadalem	0	0	0		0	
Kec. Waringinkurung	1	2	53		891	

Sumber/ Source: Dinas Pendidikan dan Kebudayaan Kabupaten Serang/ Ministry of Culture and Education of Serang Regency

EDUCATION

Tabel 4.6 Jumlah Sekolah, Guru dan Murid Madrasah Aliyah (MA) di Kecamatan Waringinkurung, 2016
Table *Number of Schools, Pupils, and Teachers of Islamic High School in Waringinkurung District, 2016*

Desa/Kelurahan Village/Subdistrict	Sekolah School		Guru Teacher		Murid Student	
	Negeri State	Swasta Private	L / M	P / F	L / M	P / F
(1)	(2)	(3)	(4)	(5)	(6)	(7)
1. Sasahan	0	0	0	0	0	0
2. Cokop Sulanjana	0	0	0	0	0	0
3. Telaga Luhur	0	1	9	6	109	112
4. Binangun	0	0	0	0	0	0
5. Kemuning	0	0	0	0	0	0
6. Sukabares	0	0	0	0	0	0
7. Sambilawang	0	0	0	0	0	0
8. Melati	0	0	0	0	0	0
9. Sampir	0	0	0	0	0	0
10. Waringinkurung	0	0	0	0	0	0
11. Sukadalem	0	1	3	4	28	61
Kec. Waringinkurung	0	2	12	10	137	173

Sumber/ Source: Kementerian Agama Kabupaten Serang/ Ministry of Religion of Serang Regency

5

KESEHATAN DAN KB

HEALTH AND BIRTH CONTROL

<http://serangkab.bps.go.id>

Tabel 5.1 Jumlah Sarana Kesehatan di Kecamatan Waringinkurung, 2016
Table
Number of Health Facilities in Waringinkurung District, 2016

Desa/Kelurahan <i>Village/Subdistrict</i>	Rumah Sakit <i>Hospital</i>	Rumah Bersalin <i>Maternity Hospital</i>	Poliklinik/ Balai Pengobatan <i>Policlinic/Clinic</i>	Puskesmas/ Puskesmas Pembantu <i>Public Health Center</i>
(1)	(3)	(3)	(4)	(5)
1. Sasahan	0	0	0	1
2. Cokop Sulanjana	0	0	0	0
3. Telaga Luhur	0	0	0	0
4. Binangun	0	0	0	0
5. Kemuning	0	0	0	0
6. Sukabares	0	0	0	0
7. Sambilawang	0	0	0	0
8. Melati	0	0	0	1
9. Sampir	0	0	0	0
10. Waringinkurung	0	0	1	1
11. Sukadalem	0	0	0	0
Jumlah/ Total	0	0	1	3

Lanjutan tabel/ Continued table 5.1

Desa/Kelurahan <i>Village/Subdistrict</i>	Tempat Praktek Dokter <i>Doctor's Office</i>	Tempat Praktek Bidan <i>Midwife Practices</i>	Poskesdes <i>Village Health Center</i>	Polindes <i>Village Maternity Center</i>
(1)	(6)	(7)	(8)	(9)
1. Sasahan	0	1	1	0
2. Cokop Sulanjana	0	1	1	0
3. Telaga Luhur	0	1	1	0
4. Binangun	0	1	1	0
5. Kemuning	0	1	1	0
6. Sukabares	0	1	1	0
7. Sambilawang	0	1	1	0
8. Melati	0	1	1	0
9. Sampir	0	1	1	0
10. Waringinkurung	0	1	0	0
11. Sukadalem	0	1	1	0
Jumlah/ Total	0	11	10	0

Lanjutan tabel/ *Continued table 5.1*

Desa/Kelurahan Village/Subdistrict	Posyandu Integrated Health Center	Posbindu	Apotek Pharmacy	Toko Khusus Obat/Jamu Drugstore
(1)	(10)		(11)	(12)
1. Sasahan	5	2	0	0
2. Cokop Sulanjana	4	1	0	0
3. Telaga Luhur	4	1	0	0
4. Binangun	3	1	0	0
5. Kemuning	5	1	0	0
6. Sukabares	4	1	0	0
7. Sambilawang	3	1	0	0
8. Melati	3	2	0	0
9. Sampir	4	1	0	0
10. Waringinkurung	5	1	0	0
11. Sukadalem	7	1	0	0
Jumlah/ Total	47	13	0	0

Sumber/ Source: Kantor Desa Se Kecamatan Waringinkurung/ Village Offices in Waringinkurung District

HEALTH AND BIRTH CONTROL

Tabel 5.2 Jumlah Tenaga Kesehatan di Kecamatan Waringinkurung, 2016
Table **Number of Health Worker in Waringinkurung District, 2016**

Tenaga Kesehatan <i>Health Worker</i>	Laki-Laki <i>Male</i>	Prempuan <i>Female</i>	Jumlah <i>Total</i>
(1)	(2)	(3)	(4)
Dokter Umum / <i>General Practitioner</i>	0	4	4
Dokter Gigi / <i>Dentist</i>	0	2	2
Dokter Spesialis / <i>Medical Specialist</i>	0	0	0
Bidan / <i>Midwife</i>	0	23	23
Perawat / <i>Nurse Practitioner</i>	0	6	6
Perawat Gigi / <i>Dental Nurse</i>	0	1	1
Dukun Bayi Terlatih / <i>Traditional Midwife</i>	0	37	37
Ahli Gizi / <i>Nutritionist</i>	0	0	0
Apoteker / <i>Pharmacist</i>	0	3	3
Tenaga Kesehatan lain / <i>Other Health Worker</i>	0	3	3
Tenaga Lainnya / <i>Other Worker</i>	0	4	4
Jumlah/ <i>Total</i>	0	83	83

Sumber/ *Source*: Puskesmas Kecamatan Waringinkurung / *Public Health Center of Waringinkurung District*

Tabel 5.3 Laporan 20 Besar Penyakit Rawat Jalan di Puskesmas Kecamatan Waringinkurung, 2016
Table 20 Patients by Type of Disease in Public Health Center of Waringinkurung District, 2016

	Jenis Penyakit <i>Disease</i>	Jumlah Pasien <i>Patients</i>	Persentase (%) <i>Percentage (%)</i>
	(1)	(2)	(3)
1.	Infeksi Saluran Nafas Atas Akut YTT	825	24,55
2.	Cephalgia / Headache / Sakit Kepala	447	13,30
3.	Sehat (hanya control saja)	300	8,93
4.	Batuk	259	7,71
5.	Febris tanpa sebab yang jelas	259	7,71
6.	Hipertensi Esensial	244	7,26
7.	Kontrasepsi (KB)	145	4,31
8.	Demam Thypus dan Parathyfus	144	4,28
9.	Gangguan Gigi dan Jaringan Penunjang	130	3,87
10.	Karies Gigi	112	3,33
11.	Pemeriksaan pra-kerja	74	2,20
12.	Gangguan Pertumbuhan dan Erupsi Gigi	68	2,02
13.	Sterilisasi	68	2,02
14.	Gastritis, unspecified	67	1,99
15.	Myalgia	49	1,46

Lanjutan tabel/ Continued table 5.3

Jenis Penyakit	Jumlah Pasien	Prosentase (%)
(1)	(2)	(3)
16. Diare and Gastroenteritis non Spesifik	45	1,34
17. Batuk Rejan/Whooping Cough	42	1,25
18. Disentri Basiler (Shigellosis)	29	0,86
19. Penyakit Protozoa Lainnya	28	0,83
20. Infeksi Amuba Lainnya	26	0,77
Jumlah/ Total	3361	100

Sumber/ Source: Puskesmas Kecamatan Waringinkurung / Public Health Center of Waringinkurung District

Tabel 5.4 Target dan Realisasi Imunisasi di Kecamatan Waringinkurung, 2016
Table Targets and Realization of Vaccination in Waringinkurung District, 2016

Desa/Kelurahan Village/Subdistrict	BCG		HB 1	
	Target Target	Realisasi Realization	Target Target	Realisasi Realization
(1)	(2)	(3)	(4)	(5)
1. Sasahan	56	73	56	75
2. Cokop Sulanjana	34	36	34	31
3. Telaga Luhur	47	56	47	49
4. Binangun	56	58	56	58
5. Kemuning	52	52	52	51
6. Sukabares	57	82	57	89
7. Sambilawang	74	67	74	66
8. Melati	43	56	43	48
9. Sampir	36	49	36	56
10. Waringinkurung	192	147	192	116
11. Sukadalem	123	102	123	103
Kec. Waringinkurung	770	778	770	742

Lanjutan tabel/ Continued table 5.4

Desa/Kelurahan <i>Village/Subdistrict</i>	DPT – HB3/DPT – HB – Hib3		Imunisasi Lengkap	
	Target <i>Target</i>	Realisasi <i>Realization</i>	Target <i>Target</i>	Realisasi <i>Realization</i>
(1)	(6)	(7)	(8)	(9)
1. Sasahan	66	77	66	72
2. Cokop Sulanjana	41	37	41	47
3. Telaga Luhur	52	56	52	52
4. Binangun	64	42	64	49
5. Kemuning	60	48	60	52
6. Sukabares	63	72	63	72
7. Sambilawang	80	82	80	85
8. Melati	49	56	49	58
9. Sampir	47	41	47	40
10. Waringinkurung	133	151	133	143
11. Sukadalem	133	118	133	95
Kec. Waringinkurung	788	780	788	765

Lanjutan tabel/ *Continued table 5.4*

Desa/Kelurahan <i>Village/Subdistrict</i>	Campak		Polio	
	Target <i>Target</i>	Realisasi <i>Realization</i>	Target <i>Target</i>	Realisasi <i>Realization</i>
(1)	(6)	(7)	(8)	(9)
1. Sasahan	66	70	66	77
2. Cokop Sulanjana	41	45	41	31
3. Telaga Luhur	52	52	52	63
4. Binangun	64	49	64	39
5. Kemuning	60	53	60	50
6. Sukabares	63	73	63	72
7. Sambilawang	80	85	80	78
8. Melati	49	58	49	51
9. Sampir	47	37	47	41
10. Waringinkurung	133	142	133	147
11. Sukadalem	133	97	133	109
Kec. Waringinkurung	788	761	788	758

Sumber/ *Source*: Puskesmas Kecamatan Waringinkurung / *Public Health Center of Waringinkurung District*

Tabel 5.5 Jumlah Kelahiran, Bayi Berat Lahir Rendah dan Balita/Anak Gizi Buruk di Kecamatan Waringinkurung, 2016
Table *Number of Births, Low Birthweight Infants and Malnourished Child/Toddler in Waringinkurung District, 2016*

Desa/Kelurahan Village/Subdistrict	Kelahiran / Births			Balita/Anak Gizi Buruk Malnourished Child/Toddler
	Lahir hidup Live Birth	Berat bayi Lahir Rendah (BBLR) Low Birthweight Infants (LBW)	% BBLR % LBW	
(1)	(2)	(3)	(4)	(5)
1. Sasahan	74	3	23,08	0
2. Cokop Sulanjana	33	2	15,38	1
3. Telaga Luhur	48	0	0	0
4. Binangun	62	3	23,08	0
5. Kemuning	50	1	7,69	0
6. Sukabares	92	1	7,69	0
7. Sambilawang	76	2	15,38	0
8. Melati	52	0	0	1
9. Sampir	59	0	0	2
10. Waringinkurung	119	0	0	0
11. Sukadalem	105	1	7,69	1
Kec. Waringinkurung	770	13	100	5

Sumber/ Source: Puskesmas Kecamatan Waringinkurung / Public Health Center of Waringinkurung District

Tabel 5.6 Cakupan Kunjungan Ibu Hamil, K1 dan K4 di Kecamatan Waringinkurung, 2016
Table Antenatal Care in Waringinkurung District, 2016

Desa/Kelurahan Village/Subdistrict	Ibu Hamil Expectant Mother	K1 Trimester 1	%	K4 Trimester 4	%
(1)	(2)	(3)	(4)	(5)	(6)
1. Sasahan	61	55	90	64	105
2. Cokop Sulanjana	38	23	61	18	47
3. Telaga Luhur	52	20	38	43	83
4. Binangun	62	35	56	43	69
5. Kemuning	57	64	112	51	89
6. Sukabares	64	60	94	64	100
7. Sambilawang	82	80	98	53	65
8. Melati	47	53	113	55	117
9. Sampir	40	39	98	53	133
10. Waringinkurung	211	168	80	88	42
11. Sukadalem	135	115	85	93	69
Kec. Waringinkurung	849	712	84	625	74

Sumber/ Source: Puskesmas Kecamatan Waringinkurung / Public Health Center of Waringinkurung District

Tabel 5.7 Jumlah Persalinan yang Ditolong Tenaga Kesehatan di Kecamatan Waringinkurung, 2016
Table Number of Births Assisted by Health Workers in Waringinkurung District, 2016

Desa/Kelurahan Village/Subdistrict	Target Target	Realisasi Realization	%
(1)	(2)	(3)	(4)
1. Sasahan	59	77	131
2. Cokop Sulanjana	36	36	100
3. Telaga Luhur	50	49	98
4. Binangun	59	58	98
5. Kemuning	54	43	80
6. Sukabares	61	88	144
7. Sambilawang	78	64	82
8. Melati	45	52	116
9. Sampir	38	50	132
10. Waringinkurung	201	119	59
11. Sukadalem	129	102	79
Kec. Waringinkurung	810	738	91

Sumber/ Source: Puskesmas Kecamatan Waringinkurung / Public Health Center of Waringinkurung District

Tabel 5.8 Jumlah Sarana Pelayanan KB di Kecamatan ..., 2016
Table Number of Birth Control Facilities in ... District, 2016

Desa/Kelurahan	KKB	PKBRS	Pos KB	Posyandu Integrated Health Center	Bidan Praktek Midwives
(1)	(2)	(3)	(4)	(5)	(6)
1. Sasahan	0	0	1	5	1
2. Cokop Sulanjana	0	0	1	4	1
3. Telaga Luhur	0	0	1	4	1
4. Binangun	0	0	1	3	1
5. Kemuning	0	0	1	5	1
6. Sukabares	0	0	1	4	1
7. Sambilawang	0	0	1	3	1
8. Melati	0	0	1	3	1
9. Sampir	0	0	1	4	1
10. Waringinkurung	0	0	1	5	1
11. Sukadalem	0	0	1	7	1
Kec. Waringinkurung	0	0	11	47	11

Sumber/ Source: Puskesmas Kecamatan Waringinkurung / Public Health Center of Waringinkurung District

Tabel 5.9 Jumlah Pasangan Usia Subur (PUS) di Kecamatan Waringinkurung, 2016
Table Number of Couples of Reproductive Age in Waringinkurung District, 2016

Desa/Kelurahan Village/Subdistrict	Jumlah Pasangan Usia Subur (PUS) Couples of Reproductive Age
(1)	(2)
1. Sasahan	601
2. Cokop Sulanjana	460
3. Telaga Luhur	560
4. Binangun	495
5. Kemuning	515
6. Sukabares	546
7. Sambilawang	734
8. Melati	425
9. Sampir	458
10. Waringinkurung	1.947
11. Sukadalem	1.395
Kec. Waringinkurung	8.136

Sumber/ Source: Pengawas PLKB Kecamatan Waringinkurung / Supervisor of PLKB of Waringinkurung District

Tabel 5.10 Jumlah Akseptor KB Menurut Alat/Cara Kontrasepsi di Kecamatan Waringinkurung, 2016
Table *Number of Family Planning (KB) Acceptor by Birth Control Methods in Waringinkurung District, 2016*

Desa/Kelurahan Village/Subdistrict	IUD	MOP	MOW	Implant
(1)	(2)	(3)	(4)	(5)
1. Sasahan	17	1	2	62
2. Cokop Sulanjana	8	1	1	52
3. Telaga Luhur	3	8	3	29
4. Binangun	11	0	6	35
5. Kemuning	12	11	6	83
6. Sukabares	18	2	11	49
7. Sambilawang	35	2	4	76
8. Melati	39	6	6	21
9. Sampir	24	2	1	75
10. Waringinkurung	232	4	30	64
11. Sukadalem	44	16	16	97
Kec. Waringinkurung	443	53	86	643

Lanjutan tabel/ Continued table 5.10

Desa/Kelurahan <i>Village/Subdistrict</i>	Suntik <i>Injection</i>	Pil <i>Pill</i>	Kondom <i>Condom</i>	Lainnya <i>Others</i>
(1)	(2)	(3)	(4)	(5)
1. Sasahan	228	142	13	0
2. Cokop Sulanjana	160	135	16	0
3. Telaga Luhur	206	131	15	0
4. Binangun	192	108	14	0
5. Kemuning	133	99	12	0
6. Sukabares	262	76	19	0
7. Sambilawang	223	125	23	0
8. Melati	148	105	24	0
9. Sampir	165	98	18	0
10. Waringinkurung	919	232	43	0
11. Sukadalem	541	109	20	0
Kec. Waringinkurung	3.177	1.360	217	0

Sumber/ Source: Pengawas PLKB Kecamatan Waringinkurung / Supervisor of PLKB of Waringinkurung District

6

SOSIAL LAINNYA

OTHER SOCIAL AFFAIRS

<http://serangkab.bps.go.id>

Tabel 6.1 Jumlah dan Persentase Keluarga Penerima Bantuan Program Keluarga Harapan (PKH) di Kecamatan Waringinkurung, 2016
Number and Percentage of Recipient of Program Keluarga Harapan (PKH) in Waringinkurung District, 2016

Desa/Kelurahan Village/Subdistrict	Jumlah Keluarga Number of Family	Persentase (%) Percentage (%)
(1)	(2)	(3)
1. Sasahan	77	12,09
2. Cokop Sulanjana	43	6,75
3. Telaga Luhur	96	15,07
4. Binangun	34	5,34
5. Kemuning	108	16,95
6. Sukabares	38	5,97
7. Sambilawang	49	7,69
8. Melati	78	12,24
9. Sampir	52	8,16
10. Waringinkurung	24	3,77
11. Sukadalem	38	5,97
Kec. Waringinkurung	7	100

Sumber/ Source: UP PKH Kec. Waringinkurung/ PKH Unit of Waringinkurung District

Tabel 6.2 **Persentase Bangunan Tempat Tinggal Sehat / Rumah Sehat di Kecamatan Waringinkurung, 2016**
Percentage of Healthy Residential Buildings in Waringinkurung District, 2016

Desa/Kelurahan Village/Subdistrict	Target Target	Rumah Sehat Healthy House	Persentase Percentage
(1)	(2)	(3)	(4)
1. Sasahan	759	621	81,82
2. Cokop Sulanjana	471	455	96,90
3. Telaga Luhur	682	653	95,75
4. Binangun	656	352	53,66
5. Kemuning	395	340	86,08
6. Sukabares	1.065	499	46,85
7. Sambilawang	561	424	75,58
8. Melati	432	362	83,80
9. Sampir	1.355	878	64,80
10. Waringinkurung	1.385	1.087	78,48
11. Sukadalem	603	601	99,67
Kec. Waringinkung	8.364	6.272	74,99

Sumber/ Source: Puskesmas Kecamatan Waringinkurung / Public Health Center of Waringinkurung District

Tabel 6.3 Persentase Jumlah Pemeluk Agama di Kecamatan Waringinkurung, 2016
Table Percentage of Believer in Waringinkurung District, 2016

Desa/Kelurahan Village/Subdistrict	Islam <i>Islam</i>	Katolik <i>Catholic</i>	Protestan <i>Protestant</i>	Hindu <i>Hindu</i>	Budha <i>Budha</i>
(1)	(2)	(3)	(4)	(5)	(6)
1. Sasahan	100	0	0	0	0
2. Cokop Sulanjana	100	0	0	0	0
3. Telaga Luhur	100	0	0	0	0
4. Binangun	100	0	0	0	0
5. Kemuning	100	0	0	0	0
6. Sukabares	100	0	0	0	0
7. Sambilawang	100	0	0	0	0
8. Melati	100	0	0	0	0
9. Sampir	100	0	0	0	0
10. Waringinkurung	94,30	0,63	4,75	0,13	0,19
11. Sukadalem	100	0	0	0	0

Sumber/ Source: KUA Kecamatan Waringinkurung / Office of Religious Affairs of Waringinkurung District

Tabel 6.4 Jumlah Tempat Peribadatan di Kecamatan Waringinkurung, 2016
Table Number of Worship Facilities in Waringinkurung District, 2016

Desa/Kelurahan Village/Subdistrict	Masjid Mosque	Mushola Musholla	Geraja Church	Lainnya Others
(1)	(2)	(3)	(5)	(6)
1. Sasahan	6	9	0	0
2. Cokop Sulanjana	4	4	0	0
3. Telaga Luhur	5	8	0	0
4. Binangun	6	3	0	0
5. Kemuning	5	1	0	0
6. Sukabares	9	8	0	0
7. Sambilawang	11	6	0	0
8. Melati	6	4	0	0
9. Sampir	5	5	0	0
10. Waringinkurung	10	11	0	0
11. Sukadalem	5	3	0	0
Kec. Waringinkurug	72	62	0	0

Sumber/ Source: KUA Kecamatan Waringinkurung / Office of Religious Affairs of Waringinkurung District

Tabel 6.5 Jumlah Pernikahan Menurut Desa/Kelurahan di Kecamatan Waringinkurung, 2016
Table *Number of Marriages, Separations/Divorces and Reconciliations by Village/Subdistrict in Waringinkurung District, 2016*

Desa/Kelurahan <i>Village/Subdistrict</i>	Pernikahan dengan Wali Nasab <i>Marriage with Wali Nasab</i>	Pernikahan dengan Wali Hakim <i>Marriage with Wali Hakim</i>	Jumlah <i>Total</i>
(1)	(2)	(3)	(4)
1. Sasahan	47	2	49
2. Cokop Sulanjana	27	0	27
3. Telaga Luhur	49	0	49
4. Binangun	40	0	40
5. Kemuning	35	1	36
6. Sukabares	61	0	61
7. Sambilawang	46	2	48
8. Melati	20	0	20
9. Sampir	29	0	29
10. Waringinkurung	66	0	66
11. Sukadalem	69	2	71
Kec. Waringinkurug	489	7	496

Sumber/ *Source*: KUA Kecamatan Waringinkurung / *Office of Religious Affairs of Waringinkurung District*

OTHER SOCIAL AFFAIRS

Tabel 6.6 Jumlah Permasalahan Sosial Menurut Jenis di Kecamatan Waringinkurung, 2012-2016
Table Number of Social Problems in Waringinkurung District, 2012-2016

Jenis PMKS Social Problem	2012	2013	2014	2015	2016
(1)	(2)	(3)	(4)	(5)	(6)
Anak Terlantar / <i>Neglected Children</i>	16	132	9	5	5
Anak Nakal / <i>Scapegrace</i>	219	0	0	0	0
Lansia/Jompo Terlantar/ <i>Neglected Elderly</i>	0	0	177	350	350
Korban Narkotika / <i>Drug Abuser</i>	224	0	0	0	0
Penyandang Cacat / <i>People with Disability</i>	0	2	100	119	119
Gelandangan dan Pengemis / <i>Beggar</i>	0	0	2	1	1
Anak dengan Kedisabilitas (ADK) / <i>Children with Disabilities</i>	0	0	65	10	10
Fakir Miskin/Keluarga Miskin / <i>Poor</i>	0	1.357	0	0	0
Anak Jalanan / <i>Street Children</i>	2	0	0	0	0
Wanita Rawan Sosioal Ekonomi / <i>Women Prone to Social Economy</i>	69	0	180	528	528
Anak Balita Terlantar / <i>Neglected Toddler</i>	0	0	5	1	1
Anak Korban Kekerasan / <i>Children Victims of Violence</i>	0	0	0	1	0
Wanita Korban Tindak Kekerasan / <i>Women Victims of Violence</i>	0	0	0	1	0
Anak yang Memerlukan Perlindungan Khusus / <i>Children in Need of Sprcial Protection</i>	0	0	0	0	1
Eksnarapidana / <i>Ex-Convict</i>	0	0	0	1	1
Kelurga Berumah Tidak Layak Huni / <i>Families with Uninhabitable House</i>	102	0	349	0	0
Korban Bencana Alam / <i>Natural Disaster Victim</i>	0	4	0	0	0

Sumber/ Source: Dinas Sosial Kabupaten Serang / *Social Services of Serang Regency*

Tabel 6.7 Banyaknya Fasilitas Olahraga Menurut Desa/Kelurahan di Kecamatan Waringinkurung, 2016
Table *Number of Sport Facilities in Waringinkurung District, 2016*

Desa/Kelurahan <i>Village/Subdistrict</i>	Sepak Bola <i>Soccer</i>	Bola Voli <i>Volley Ball</i>	Bulu Tangkis <i>Badminton</i>	Tenis Meja <i>Table Tennis</i>	Lap. Tenis <i>Tennis</i>	Lap. Futsal <i>Futsal</i>
(1)	(2)	(3)	(4)	(5)	(6)	(7)
1. Sasahan	0	0	0	1	0	0
2. Cokop Sulanjana	2	1	0	0	0	0
3. Telaga Luhur	0	0	0	0	0	0
4. Binangun	0	1	0	0	0	0
5. Kemuning	1	0	1	1	0	0
6. Sukabares	0	1	1	2	0	0
7. Sambilawang	1	0	0	1	0	0
8. Melati	1	2	1	0	0	0
9. Sampir	0	2	1	1	0	0
10. Waringinkurung	3	2	3	3	0	0
11. Sukadalem	1	1	1	2	0	0
Kec. Waringinkurung	9	10	8	11	0	0

Sumber/ Source: Kantor Desa Se Kecamatan Waringinkurung/Village Offices in Waringinkurung District

<http://serangkab.bps.go.id>

7

PERTANIAN
AGRICULTURE

<http://serangkab.bps.go.id>

Tabel 7.1 Luas Lahan Sawah dan Pertanian Bukan Sawah di Kecamatan Waringinkurung, 2016
Table Area of Wetland and Dryland Field in Waringinkurung District, 2016

	Jenis Lahan <i>Land</i>	Luas Lahan (Ha) <i>Total Area (Ha)</i>	Persentase (%) <i>Percentage (%)</i>
	(1)	(2)	(3)
1.	Lahan Sawah / <i>Wetland</i>	342	8,40
a.	Irigasi Teknis / <i>Wetland with Technical Irrigation</i>	0	0
b.	Irigasi Setengah Teknia / <i>Wetland with Semi Technical Irrigation</i>	0	0
c.	Irigasi Sederhana / <i>Wetland with Simple Irrigation</i>	0	0
d.	Irigasi Desa / <i>Wetland with Village Irrigation</i>	0	0
e.	Tadah Hujan / <i>Rainfed Wetland</i>	342	8,40
f.	Pasang surut, Polder, Rembesan dan Rawa / <i>Tides, Polder, Seepage and Swamp</i>	0	0
g.	Sementara Tidak Diusahakan / <i>Temporarily Unused</i>	0	0
2.	Lahan Pertanian Bukan Sawah / <i>Dryland Field</i>	3.728	91,60
a.	Ladang, huma, tegal, dan, kebun / <i>Dryland Paddy Fields</i>	1.124	27,62
b.	Perkebunan / <i>Plantation</i>	1.856	45,60
c.	Perkarangan, lahan bangunan dan halaman / <i>Gardens, Buildings, Yards</i>	748	18,38
d.	Hutan Rakyat / <i>Public Forest</i>	0	0
e.	Rawa, Tambak, Kolom, empang / <i>Swamps, Ponds</i>	0	0
f.	Lainnya / <i>Others</i>	0	0
g.	Lahan tidur / <i>Uncultivated Land</i>	0	0
	Jumlah	4.070	100

Sumber/Source: Laporan statistik pertanian tanaman pangan, penggunaan lahan/Statistic Report of Food Crops, land utilization

Tabel 7.2 Luas Tanam dan Produksi Sayuran di Kecamatan Waringinkurung, 2016
Table *Planted Area and Production of Vegetables in Waringinkurung District, 2016*

Jenis Tanaman	Luas Tanaman (Ha) <i>Planted Area (Ha)</i>	Luas Panen (Ha) <i>Harvested Area (Ha)</i>	Produksi (Kw) <i>Production (Qu)</i>
(1)	(2)	(3)	
1. Bawang Merah / <i>Shallot</i>	0	0	0
2. Bawah Putih / <i>Garlic</i>	0	0	0
3. Daun Bawang / <i>Scallion</i>	0	0	0
4. Petsai / Sawi / <i>Mustard Green</i>	18	18	357
5. Kacang Panjang / <i>Yardlong Bean</i>	12	12	244
6. Kacang Merah / <i>Kidney Bean</i>	0	0	0
7. Tomat / <i>Tomato</i>	0	0	0
8. Terung / <i>Eggplant</i>	2	2	55
9. Buncis / <i>Green Bean</i>	0	0	0
10. Ketimun / <i>Cucumber</i>	14	14	357
11. Kangkung / <i>Water Spinach</i>	14	14	205
12. Bayam / <i>Spinach</i>	13	13	191
13. Labu Siam / <i>Chayote</i>	0	0	0
14. Cabe Rawit / <i>Bird's Eye Chili</i>	0	0	0
15. Cabe Merah / <i>Chili</i>	0	0	0
16. Cabe Besar / <i>Cayenne Pepper</i>	7	7	193
17. Talas / <i>Taro</i>	0	0	0
18. Ganyong / <i>Canna</i>	0	0	0
19. Jamur / <i>Mushroom</i>	0	0	0

Sumber/*Source*: Dinas Pertanian, Kehutanan, Perkebunan dan Peternakan Kabupaten Serang/ Deaprtement of Agriculture, Forestry, Plantations and Farms of Serang Regency

Tabel 7.3 Luas Tanam dan Produksi Buah-buahan di Kecamatan Waringinkurung, 2016
Table Planted Area and Production of Fruits in Waringinkurung District, 2016

	Jenis Tanaman <i>Fruit</i>	Jumlah Pohon / <i>Trees</i>		Produksi (Kw) <i>Production (Qu)</i>
		Seluruhnya <i>All Trees</i>	Menghasilkan <i>Productive Trees</i>	
	(1)	(2)	(3)	(4)
1.	Alpukat / <i>Avocado</i>	60	60	40
2.	Belimbing / <i>Star Fruit</i>	400	400	127
3.	Duku / <i>Langsat / Lanzone</i>	5.000	5.000	4.700
4.	Durian / <i>Durian</i>	10.000	10.000	5.751
5.	Jambu Biji / <i>Guava</i>	480	480	200
6.	Jambu Air / <i>Water Apple</i>	100	100	66
7.	Jeruk Siam/Keprok <i>Tangerine</i>	200	200	50
8.	Mangga / <i>Mango</i>	2.000	2.000	1.520
9.	Manggis / <i>Mangosteen</i>	750	750	640
10.	Nangka / <i>Jackfruit</i>	100	100	30
11.	Nanas / <i>Pineapple</i>	200	200	10
12.	Pepaya / <i>Papaya</i>	2.000	2.000	748
13.	Pisang / <i>Banana</i>	5.000	5.000	1.660
14.	Rambutan / <i>Rambutan</i>	4.000	4.000	2.000
15.	Salak / <i>Snake Fruit</i>	5.000	5.000	100
16.	Sawo / <i>Sapodilla</i>	300	300	113
17.	Sirsak / <i>Soursop</i>	300	300	30
18.	Sukun / <i>Breadfruit</i>	1.000	1.000	430
19.	Melinjo / <i>Melinjo</i>	50.000	50.000	19.000
20.	Petai / <i>Stink Bean</i>	2.100	2.100	630
21.	Jengkol / <i>Dogfruit</i>	100	100	75

Sumber/Source: Dinas Pertanian, Kehutanan, Perkebunan dan Peternakan Kabupaten Serang/ Department of Agriculture, Forestry, Plantations and Farms of Serang Regency

Tabel 7.4 Luas Area dan Produksi Perkebunan Rakyat di Kecamatan Waringinkurung, 2016
Table *Planted Area and Production of Smallholder Plantation in Waringinkurung District, 2016*

Jenis Tanaman <i>Plant</i>	Luas Tanaman (Ha) <i>Planted Area (Ha)</i>	Produksi (Kw) <i>Production (Qu)</i>
(1)	(2)	(3)
1. Karet / <i>Rubber Tree</i>	0	0
2. Kopi / <i>Coffee</i>	5	4
3. Kelapa / <i>Coconut</i>	277	220,22
4. Cengkeh / <i>Clove</i>	68	10,20
5. Lada / <i>Pepper</i>	10	6,30
6. Kapuk / <i>Kapok</i>	0	0
7. Kakao / <i>Cocoa</i>	75	11,20
8. Panili / <i>Vanilla</i>	0	0
9. Pala / <i>Nutmeg</i>	0	0
10. Melinjo / <i>Melinjo</i>	0	0
11. Jambu Mede / <i>Cashew Tree</i>	0	0
12. Kemiri / <i>Candlenut</i>	1	0,70
13. Aren / <i>Sugar Palm</i>	0	0
14. Jarak Pagar / <i>Nettlespurge</i>	0	0

Sumber/Source: Dinas Pertanian, Kehutanan, Perkebunan dan Peternakan Kabupaten Serang/ Deaprtement of Agriculture, Forestry, Plantations and Farms of Serang Regency

Tabel 7.5 Populasi Ternak dan Unggas di Kecamatan Waringinkurung, 2016
Table *Population of Livestock and Poultry in Waringinkurung District, 2016*

Jenis Ternak <i>Livestock</i>	Populasi (Ekor) <i>Population</i>
(1)	(2)
Sapi Potong / <i>Cow</i>	40
Sapi Perah / <i>Dairy Cow</i>	0
Kerbau / <i>Buffalo</i>	487
Kuda / <i>Horse</i>	0
Kambing / <i>Goat</i>	0
Domba / <i>Sheep</i>	0
Ayam Ras Pedaging / <i>Broiler Chicken</i>	0
Ayam Ras Petelur / <i>Laying Hens</i>	0
Ayam Buras / <i>Chicken</i>	0
Itik / <i>Duck</i>	23.498

Sumber/*Source*: Dinas Pertanian, Kehutanan, Perkebunan dan Peternakan Kabupaten Serang/ Department of Agriculture, Forestry, Plantations and Farms of Serang Regency

8

INDUSTRI DAN PENGGALIAN

INDUSTRY AND EXCAVATION

<http://serangkab.bps.go.id>

Tabel 8.1 Jumlah Perusahaan dan Tenaga Kerja Industri Kecil dan Rumah Tangga di Kecamatan Waringinkurung, 2016
Table *Number of Small/Household Manufacturing Establishment and Employees in Waringinkurung District, 2016*

Desa/Kelurahan Village/Subdistrict	Industri Kecil (Tenaga Kerja 5-19 orang) <i>Small Manufacturing Establishment (5-19 Employees)</i>		Industri Rumah Tangga (Tenaga Kerja 1-4 orang) <i>Household Manufacturing Establishment (1-4 Employees)</i>	
	Usaha/Prusahaan <i>Establishment</i>	Tanaga Kerja <i>Employee</i>	Usaha/Prusahaan <i>Establishment</i>	Tanaga Kerja <i>Employee</i>
(1)	(2)	(4)	(5)	(6)
1. Sasahan	0	0	252	502
2. Cokop Sulanjana	0	0	12	24
3. Telaga Luhur	0	0	331	650
4. Binangun	0	0	520	1.020
5. Kemuning	0	0	514	1.014
6. Sukabares	0	0	322	622
7. Sambilawang	0	0	69	134
8. Melati	0	0	216	426
9. Sampir	0	0	326	646
10. Waringinkurung	0	0	65	130
11. Sukadalem	0	0	241	721
Kec. Waringinkurung	0	0	2.868	5.889

Sumber/ Source: Kantor Desa Se Kecamatan Waringinkurung/Village Offices in Waringinkurung District

<http://serangkab.bps.go.id>

9

**PERDAGANGAN, HOTEL DAN
RESTORAN**
*TRADE, HOTEL AND
RESTAURANT*

<http://serangkab.bps.go.id>

Tabel 9.1 Jumlah Restoran dan Toko Kelontong di Kecamatan Waringinkurung, 2016
Table *Number of Restaurants and Stores in Waringinkurung District, 2016*

Desa/Kelurahan <i>Village/Subdistrict</i>	Restoran/Rumah Makan <i>Restaurants</i>	Warung/ Kedai Makanan, Minuman <i>Small Shops</i>	Toko/ Warung Kelontong <i>Convenience Stores</i>
(1)	(2)	(3)	(4)
1. Sasahan	0	0	27
2. Cokop Sulanjana	0	0	21
3. Telaga Luhur	0	0	34
4. Binangun	0	0	21
5. Kemuning	0	0	36
6. Sukabares	0	1	35
7. Sambilawang	0	1	35
8. Melati	0	0	25
9. Sampir	0	0	20
10. Waringinkurung	0	3	148
11. Sukadalem	0	0	29
Kec. Waringinkurung	0	5	431

Sumber/ Source: Kantor Desa Se Kecamatan Waringinkurung/Village Offices in Waringinkurung District

Tabel 9.2 Jumlah Penginapan dan Hotel di Kecamatan Waringinkurung, 2016
Table *Number of Accommodations and Hotels in Waringinkurung District, 2016*

Desa/Kelurahan	Penginapan/ Hotel Melati	Hotel Bintang	Jumlah
(1)	(2)	(3)	(4)
1. Sasahan	0	0	0
2. Cokop Sulanjana	0	0	0
3. Telaga Luhur	0	0	0
4. Binangun	0	0	0
5. Kemuning	0	0	0
6. Sukabares	0	0	0
7. Sambilawang	0	0	0
8. Melati	0	0	0
9. Sampir	0	0	0
10. Waringinkurung	1	2	3
11. Sukadalem	0	0	0
Kec. Waringinkurung	1	2	3

Sumber/ Source: Kantor Desa Se Kecamatan Waringinkurung/Village Offices in Waringinkurung District

<http://serangkab.bps.go.id>

DATA

MENCERDASKAN BANGSA



**BADAN PUSAT STATISTIK
KABUPATEN SERANG**
STATISTICS OF SERANG REGENCY

Jl. Desa Kaserangan - Pengampelan No.7 Ciruas, Kabupaten Serang 42182
Telp. / Fax (0254) 282902 email: bps3604@bps.go.id