

Kecamatan BONJOL DALAM ANGKA

*Bonjol Subdistrict
In Figures*

2021



Kecamatan BONJOL DALAM ANGKA

*Bonjol Subdistrict
In Figures*

2021



KECAMATAN BONJOL DALAM ANGKA
Bonjol Subdistrict In Figures
2021

ISBN: 978-602-5941-56-6

No. Publikasi/Publication Number: 13090.2118

Katalog /Catalog: 1102001.1309070

Ukuran Buku/Book Size: 14,8 cm x 21 cm

Jumlah Halaman/Number of Pages : xviii+100 hal/pages

Naskah/Manuscript:

BPS Kabupaten Pasaman

BPS-Statistics of Pasaman Regency

Penyunting/Editor:

BPS Kabupaten Pasaman

BPS-Statistics of Pasaman Regency

Desain Kover/Cover Design:

BPS Kabupaten Pasaman

BPS-Statistics of Pasaman Regency

Ilustrasi Kover/Cover Illustration:

Museum Bonjol/Bonjol Museum

Diterbitkan oleh/Published by:

©BPS Kabupaten Pasaman/*BPS-Statistics of Pasaman Regency*

Dicetak oleh/Printed by:

Toko Demy/Demi Shop

Sumber Ilustrasi/Graphics by:

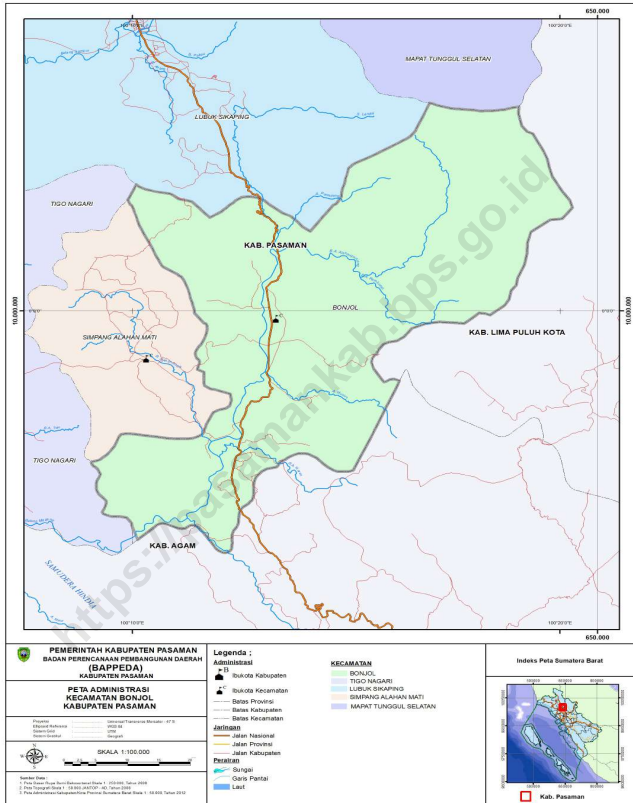
Freepik.com, Storyset.com/*Freepik.com, Storyset.com*

Dilarang mengumumkan, mendistribusikan, mengomunikasikan, dan/atau menggandakan sebagian atau seluruh isi buku ini untuk tujuan komersil tanpa izin tertulis dari Badan Pusat Statistik Kabupaten Pasaman (UU No. 28 Tahun 2014 Tentang Hak Cipta Pasal 43 huruf b)

Prohibited to announce, distribute, communicate, and/or copy part or all of this book for commercial purpose without permission from BPS-Statistics of Pasaman Regency (Law No. 28 Year 2014 About Copyright Article 43 letter b)

PETA WILAYAH KECAMATAN BONJOL

MAP OF BONJOL SUBDISTRICT





KATA PENGANTAR

Publikasi Kecamatan Bonjol Dalam Angka 2021 merupakan publikasi BPS yang menyajikan beragam data statistik tentang gambaran umum kondisi geografi dan iklim, pemerintahan, serta perkembangan kondisi sosial-demografi dan perekonomian Indonesia. Publikasi ini bersumber dari BPS Kabupaten Pasaman, dinas-dinas, dan lembaga lainnya.

Seiring dengan meningkatnya kebutuhan konsumen data, publikasi Kecamatan Bonjol Dalam Angka 2021 akan terus mengalami penyempurnaan baik struktur maupun muatannya. Untuk mempermudah akses publikasi Kecamatan Bonjol Dalam Angka 2021 dan tabel-tabel berdasarkan subyek, maka publikasi Kecamatan Bonjol Dalam Angka 2021 dapat dibaca dan diunduh melalui laman BPS (www.pasamankab.bps.go.id). Publikasi ini juga dilengkapi dengan infografis data unggulan sebagai pembatas bab.

Publikasi ini dapat terwujud berkat kerja sama dan partisipasi dari berbagai pihak. Kepada semua pihak yang telah memberikan kontribusi, kami sampaikan penghargaan dan terima kasih. Semoga publikasi yang disajikan bermanfaat bagi pengguna untuk berbagai keperluan. Kami mengharapkan tanggapan dan saran dari para pengguna publikasi ini untuk perbaikan pada edisi yang akan datang.

Lubuk Sikaping, September 2021
Kepala BPS
Kabupaten Pasaman

Aluisius Abrianta, SST, MA



PREFACE

Publication Bonjol Subdistrict in Figures 2021 published by BPS-Statistics Indonesia provides various statistical data on the general depiction of geography and climate conditions, governance, as well as developments in socio-demographic and economy in Indonesia. This publication is sourced from BPS-Statistics of Pasaman Regency, regional offices, and other institutions.

In line with the increasing data consumers needs, we will continue to make improvements in both structure and content. Publication Bonjol Subdistrict in Figures 2021 as well as tables by subject can be easily accessed and downloaded via the BPS-Statistics of Pasaman Regency website (www.pasamankab.bps.go.id). This publication is also equipped with a featured data infographic as a chapter divider.

The release of this publication has been made possible due to the assistance and contribution of various government institutions and private organizations. To all parties who have contributed in the completion of the publication, we would like to express our high appreciation and gratitude. Hopefully, this publication will be a useful resources for variety of purposes. Feedback and suggestions to improve the publication are always welcomed.

*Lubuk Sikaping, September 2021
Chief Statistician of
Pasaman Regency*

Aluisius Abrianta, SST, MA

DAFTAR ISI / CONTENTS

	Halaman <i>Page</i>
Kata Pengantar/ <i>Preface</i>	vii
Daftar Isi/ <i>Contents</i>	ix
Daftar Tabel/ <i>List of Tables</i>	xi
Daftar Gambar/ <i>List of Figures</i>	xix
1. Geografi dan Iklim/ <i>Geography and Climate</i>	1
2. Sosial dan Kesejahteraan Rakyat/ <i>Social and Welfare</i>	15
3. Pertanian/ <i>Agriculture</i>	57
4. Komunikasi, Transportasi, dan Perdagangan/ <i>Agriculture, Transportation, and Trade</i>	83

DAFTAR TABEL/LIST OF TABLES

Halaman
Page

1.	GEOGRAFI DAN PEMERINTAHAN/GEOGRAPHY AND GOVERNMENT	
1.1	GEOGRAFI GEOGRAPHY	
1.1.1	Luas Nagari dan Persentasenya terhadap Luas Kecamatan Bonjol, 2020 <i>Village Area and Percentage to Bonjol Subdistrict Area, 2020</i>	5
1.1.2	Letak Geografis Kecamatan Bonjol, 2020 <i>Geographical Location of Bonjol Subdistrict, 2020</i>	6
1.1.3	Luas Daerah Menurut Kecamatan di Kabupaten Pasaman (km ²), 2020 <i>Area by Subdistrict in Pasaman Regency (km²), 2020</i>	7
1.1.4	Jarak Nagari di ke Kecamatan Bonjol ke Ibukota Kecamatan, Ibukota Kabupaten, dan Ibukota Provinsi (km), 2020 <i>Distance from Villages in Bonjol to Capital City of Subdistrict, Capital City of Regency, and Capital City of Province (km), 2020</i>	8
1.1.5	Nama Sungai di Kecamatan Bonjol, 2020 <i>Rivers in Bonjol Subdistrict, 2020</i>	9
1.2	PEMERINTAHAN GOVERNMENT	
1.2.1	Nama Camat dan Masa Jabatannya di Kecamatan Bonjol, 2000-2020 <i>Names of Subdistrict Head and Term of Office in Bonjol Subdistrict, 2000-2020</i>	10
1.2.2	Nama Wali Nagari Menurut Tingkat Pendidikan di Kecamatan Bonjol, 2020 <i>Names of Village Head by Education Level in Bonjol Subdistrict, 2020</i> ..	11
1.2.3	Nama Ketua Kerapatan Adat Nagari (LAN) Menurut Tingkat Pendidikan di Kecamatan Bonjol, 2020 <i>Names of Nagari Traditional Organisation (KAN) Head by Education Level in Bonjol Subdistrict, 2020</i>	12
1.2.4	Nama Nagari dan Jorong di Kecamatan Bonjol, 2020 <i>Names of Village and Jorong in Bonjol Subdistrict, 2020</i>	13
2.	SOSIAL DAN KESEJAHTERAAN/SOCIAL AND WELFARE	
2.1	KEPENDUDUKAN POPULATION	
2.1.1	Penduduk, Laju Pertumbuhan Penduduk, Distribusi Persentase Penduduk, Kepadatan Penduduk, Rasio Jenis Kelamin Menurut Nagari di Kecamatan Bonjol, 2020 <i>Population, Population Growth Rate, Percentage Distribution of Population, Population Density, and Sex Ratio by Village in Bonjol Subdistrict, 2020</i>	25

2.1.2	Jumlah Penduduk Menurut Kelompok Umur dan Jenis Kelamin di Kecamatan Bonjol, 2020 <i>Population by Age Group and Sex in Bonjol Subdistrict, 2020</i>	28
2.1.3	Jumlah Penduduk Menurut Jenis Kelamin di Kecamatan Bonjol, 2016 - 2020 <i>Population by Gender in Bonjol Subdistrict, 2016-2020</i>	29
2.1.4	Jumlah Penduduk Menurut Jenis Kelamin dan Rasio Jenis Kelamin Menurut Kecamatan di Kabupaten Pasaman, 2020 <i>Population by Gender and Sex Ratio by Subdistrict in Pasaman Regency, 2020</i>	30
2.2	PENDIDIKAN EDUCATION	
2.2.1	Banyaknya Nagari Menurut Keberadaan Sekolah Dasar (SD) dan Madrasah Ibtidaiyah (MI) di Kecamatan Bonjol, 2020 <i>Number of Villages by Existence Elementary School and Madrasah Ibtidaiyah in Bonjol Subdistrict, 2020</i>	31
2.2.2	Banyaknya Nagari Menurut Keberadaan Sekolah Menengah Pertama (SMP) dan Madrasah Tsanawiyah (MTs) di Kecamatan Bonjol, 2020 <i>Number of Villages by Existence Junior High School and Madrasah Tsanawiyah in Bonjol Subdistrict, 2020</i>	32
2.2.3	Banyaknya Nagari Menurut Keberadaan Sekolah Menengah Atas (SMA)/sederajat dan Perguruan Tinggi di Kecamatan Bonjol, 2020 <i>Number of Villages by Existence Senior High School and College in Bonjol Subdistrict, 2020</i>	33
2.2.4	Banyaknya Nagari Menurut Kemudahan Untuk Mencapai Sarana Pendidikan Terdekat Bagi Nagari di Kecamatan Bonjol, 2020 <i>Number of Villages by Ease of Reaching the Closest Educational Facilities for Villages in Bonjol Subdistrict, 2020</i>	34
2.2.5	Jumlah Sekolah, Guru, dan Murid Menurut Jenjang Pendidikan di Kecamatan Bonjol, 2019-2020 <i>Number of Schools, Teachers, and Pupils by Educational Level in Bonjol Subdistrict, 2019/2020 and 2020/2021</i>	35
2.3	KESEHATAN HEALTH	
2.3.1	Banyaknya Nagari Menurut Keberadaan Sarana Kesehatan dan Jenis Sarana Kesehatan di Kecamatan Bonjol, 2020 <i>Number of Villages by Existence Health Facilities and Kinds of the Facility in Bonjol Subdistrict, 2020</i>	38
2.3.2	Banyaknya Nagari Menurut Kemudahan Untuk Mencapai Sarana Kesehatan Terdekat Bagi Nagari di Kecamatan Bonjol, 2020 <i>Number of Villages by Ease of Reaching the Closest Health Facilities for Villages in Bonjol Subdistrict, 2020</i>	39
2.3.3	Banyaknya Nagari Menurut Keberadaan Penderita Gizi Buruk di Kecamatan Bonjol, 2019 dan 2020 <i>Number of Villages by Existence Severes Manultrition in Bonjol Subdistrict, 2020</i>	40

2.3.4	Jumlah Tenaga Kesehatan di Kecamatan Bonjol, 2019-2020 <i>Number of Medical Personnels in Bonjol Subdistrict, 2019-2020</i>	41
2.3.5	Jumlah Fasilitas Kesehatan di Kecamatan Bonjol, 2019-2020 <i>Number of Health Facilities in Bonjol Subdistrict, 2019-2020</i>	42
2.4	AGAMA DAN SOSIAL LAINNYA RELIGION AND OTHER SOCIAL	
2.4.1	Jumlah Tempat Peribadatan di Kecamatan Bonjol, 2019-2020 <i>Number of Places of Worship in Bonjol Subdistrict, 2019-2020</i>	43
2.4.2	Jumlah Nikah di Kecamatan Bonjol, 2016-2020 <i>Number of Marriages in Bonjol Subdistrict, 2016-2020</i>	44
2.4.3	Jumlah Ternak Qurban, Peserta, dan Penerima Qurban di Kecamatan Bonjol, 2016-2020 <i>Number of Cattles Slaughtered, Participants, and Receivers in Bonjol Subdistrict 2016-2020</i>	45
2.4.4	Jumlah Penerbitan Kutipan Akta Kelahiran di Kecamatan Bonjol, 2016-2020 <i>Number of Citations of Birth Certificate in Bonjol Subdistrict, 2016-2020</i>	46
2.4.5	Banyaknya Nagari Menurut Jenis Pengguna Listrik di Kecamatan Bonjol, 2020 <i>Number of Villages by Types of Electricity Users in Bonjol Subdistrict, 2020</i>	47
2.4.6	Banyaknya Nagari Menurut Keberadaan Penerangan Jalan Utama Nagari di Kecamatan Bonjol, 2018-2020 <i>Number of Villages by Existence Village Main Street Lighting in Bonjol Subdistrict, 2018-2020</i>	48
2.4.7	Banyaknya Nagari Menurut Jenis Bahan Bakar untuk Memasak yang Digunakan Oleh Sebagian Besar Keluarga di Kecamatan Bonjol, 2018-2020 <i>Number of Villages by Types of Fuel for Cooking Used by Most Families in Bonjol Subdistrict, 2018-2020</i>	49
2.4.8	Banyaknya Nagari Menurut Sumber Air Minum Sebagian Besar Keluarga di Kecamatan Bonjol, 2018-2020 <i>Villages by Drinking Water Source Most Families in Bonjol Subdistrict, 2018-2020</i>	50
2.4.9	Banyaknya Nagari Menurut Penggunaan Fasilitas Tempat Buang Air Besar Sebagian Besar Keluarga di Kecamatan Bonjol, 2018-2020 <i>Number of Villages by Usage of Facilities for Defecation Most Families in Bonjol Subdistrict, 2018-2020</i>	51

2.4.10	Banyaknya Nagari menurut Jenis Kejadian Bencana Alam di Kecamatan Bonjol, 2020 <i>Number of Villages by Types of Natural Disasters in Bonjol Subdistrict, 2020</i>	52
2.4.11	Banyaknya Nagari Yang Memiliki Korban Jiwa Akibat Menurut Kejadian Bencana Alam di Kecamatan Bonjol, 2020 <i>Number of Villages Having Casualties Due to Natural Disasters in Bonjol Subdistrict, 2020</i>	53
2.4.12	Banyaknya Nagari Menurut Keberadaan Fasilitas/Upaya Antisipasi/Mitigasi Bencana Alam di Kecamatan Bonjol, 2020 <i>Number of Villages by Existence of Facilities/Anticipations/Mitigation Measures of Natural Disasters in Bonjol Subdistrict, 2020</i>	54
2.4.13	Banyaknya Nagari yang Memiliki Fasilitas/Lapangan Olahraga Menurut Jenis Olahraga di Kecamatan Bonjol, 2020 <i>Number of Villages Which Have Facilities/Fields by Types of Sport in Bonjol Subdistrict, 2020</i>	55
2.4.14	Banyaknya Nagari yang Memiliki Kelompok Kegiatan Olahraga Menurut Jenis Olahraga di Kecamatan Bonjol, 2020 <i>Number of Villages Which Have Sport Activity Groups in Bonjol Subdistrict, 2020</i>	56
3.	PERTANIAN/AGRICULTURE	
3.1	TANAMAN PANGAN	
	CROPS	
3.1.1	Luas Tanam dan Luas Panen Tanaman Palawija Menurut Jenis Tanaman di Kecamatan Bonjol (ha), 2016-2020 <i>Planted Area and Harvested Area of Secondary Food by Kinds of Plant in Bonjol Subdistrict (ha), 2016-2020</i>	63
3.2	HORTIKULTURA	
	HORTICULTURE	
3.2.1	Luas Panen Tanaman Sayuran Menurut Jenis Tanaman di Kecamatan Bonjol (ha), 2016-2020 <i>Harvested Area of Vegetables by Kinds of Plant in Bonjol Subdistrict (ha), 2016-2020</i>	64
3.2.2	Produksi Tanaman Sayuran Menurut Jenis Tanaman di Kecamatan Bonjol (ton), 2016-2020 <i>Production of Vegetables by Kinds of Plant in Bonjol Subdistrict (ton), 2016-2020</i>	65
3.2.3	Luas Panen Tanaman Sayuran dan Buah-buahan Semusim Menurut Jenis Tanaman di Kecamatan Bonjol (ha), 2016-2020 <i>Harvested Area of Seasonal Vegetables and Fruits by Kinds of Plant in Bonjol Subdistrict (ha), 2016-2020</i>	66

3.2.4	Produksi Tanaman Sayuran dan Buah-buahan Semusim Menurut Jenis Tanaman (ton) di Kecamatan Bonjol, 2016-2020 <i>Production of Seasonal Vegetables and Fruits by Kinds of Plant in Bonjol Subdistrict (ton), 2016-2020</i>	67
3.2.5	Luas Panen Tanaman Biofarmaka Menurut Jenis Tanaman di Kecamatan Bonjol (m ²), 2016-2020 <i>Harvested Area of Medicinal Plants by Kinds of Plant in Bonjol Subdistrict (m²), 2016-2020</i>	68
3.2.6	Produksi Tanaman Biofarmaka Menurut Jenis Tanaman di Kecamatan Bonjol (kg), 2016-2020 <i>Production of Medicinal Plants by Kinds of Plant in Bonjol Subdistrict (kg), 2016-2020</i>	69
3.2.7	Luas Panen Tanaman Hias Menurut Jenis Tanaman di Kecamatan Bonjol (m ²), 2016-2020 <i>Harvested Area of Ornamental Plants by Kinds of Plant in Bonjol Subdistrict (m²), 2016-2020</i>	70
3.2.8	Produksi Tanaman Hias Menurut Jenis Tanaman (tangkai) di Kecamatan Bonjol (tangkai), 2016-2020 <i>Production of Ornamental Plants by Kinds of Plant in Bonjol Subdistrict (stalks), 2016-2020</i>	71
3.2.9	Produksi Buah-Buahan dan Sayuran Tahunan Menurut Jenis Tanaman di Kecamatan Bonjol (ton), 2016-2020 <i>Production of Annual Fruits and Vegetables by Kinds of Plant in Bonjol Subdistrict (ton), 2016-2020</i>	72
3.3	PERKEBUNAN ESTATE CROPS	
3.3.1	Luas Area Tanaman Perkebunan Menurut Jenis Tanaman di Kecamatan Bonjol (ha), 2016-2020 <i>Planted Area of Estate Crops by Kinds of Plant in Bonjol Subdistrict (ha), 2016-2020</i>	73
3.3.2	Produksi Tanaman Perkebunan Menurut Jenis Tanaman di Kecamatan Bonjol (ton), 2016-2020 <i>Production of Estate Crops by Kinds of Plant in Bonjol Subdistrict (ton), 2016-2020</i>	74
3.4	PETERNAKAN LIVESTOCKS	
3.4.1	Populasi Unggas Menurut Jenis Unggas di Kecamatan Bonjol (ekor), 2016-2020 <i>Poultry Population by Kinds of Poultry in Bonjol Subdistrict (heads), 2016-2020</i>	75
3.4.2	Produksi Telur Unggas Menurut Jenis Unggas di Kecamatan Bonjol (butir), 2016-2020 <i>Production of Poultry Eggs by Kinds of Poultry in Bonjol</i>	

	<i>Subdistrict (pieces), 2016-2020.....</i>	76
3.4.3	Jumlah Usaha Unggas Menurut Jenis Unggas di Kecamatan Bonjol (unit), 2016-2020 <i>Number of Poultry Businesses by Kinds of Poultry in Bonjol Subdistrict (unit), 2016-2020.....</i>	77
3.5	FISHERY	
	LIVESTOCKS	
3.5.1	Luas Area dan Produksi Benih Ikan di Kecamatan Bonjol, 2016-2020 <i>Area and Production of Fish Seeds in Bonjol Subdistrict, 2016-2020.....</i>	78
3.5.2	Luas Area Pemeliharaan Ikan di Kecamatan Bonjol (ha), 2016-2020 <i>Area of Piscicultures in Bonjol Subdistrict (ha), 2016-2020.....</i>	79
3.5.3	Jumlah Alat Penangkapan Ikan di Perairan Umum Menurut Jenisnya di Kecamatan Bonjol, 2016-2020 <i>Number of Fishing Gears in Open Waters by Kinds in Bonjol Subdistrict, 2016-2020.....</i>	80
3.5.4	Produksi Ikan Budidaya di Kecamatan Bonjol (ton), 2016-2020 <i>Production of Fish Farming in Bonjol Subdistrict (ton), 2016-2020.....</i>	81
3.5.5	Produksi Ikan Tangkap di Perairan Umum di Kecamatan Bonjol (ton), 2016-2020 <i>Production of Catch Fish in Open Waters in Bonjol Subdistrict, 2016-2020.....</i>	82
4.	KOMUNIKASI, TRANSPORTASI, DAN PERDAGANGAN/ COMMUNICATION, TRANSPORTATION, AND TRADE	
4.1	KOMUNIKASI COMMUNICATION	
4.1.1	Jumlah Menara dan Operator Layanan Komunikasi Telepon Seluler Serta Kondisi Sinyal Telepon Seluler Menurut Nagari di Kecamatan Bonjol, 2020 <i>Number of Towers and Cellular Telephone Communication Service Operators and Cellular Signal Conditions by Village in Bonjol Subdistrict, 2020.....</i>	87
4.1.2	Keberadaan Kantor Pos/Pos Pembantu/Rumah Pos dan Perusahaan/ Agen Jasa Ekspedisi Swasta Menurut Nagari di Kecamatan Bonjol, 2020 <i>Existence of Post Offices/Supporting Post Offices/Post Houses and Companies/Private Expedition Service Agents by Village in Bonjol Subdistrict, 2020.....</i>	88
4.2	TRANSPORTASI TRANSPORTATION	
4.2.1	Sarana Transportasi Antar Nagari Menurut Nagari di Kecamatan Bonjol, 2020 <i>Village Transportation Facilities by Village in Bonjol Subdistrict, 2020.....</i>	89

4.2.2	Panjang Jalan Kabupaten Menurut Kondisi Jalan di Kecamatan Bonjol, 2016-2020 <i>Length of Regency Roads by Condition of Roads in Bonjol Subdistrict, 2016-2020</i>	90
4.2.3	Kondisi Jalan Darat Antar Nagari Menurut Nagari di Kecamatan Bonjol, 2020 <i>Conditions of Inter-Village Land Roads by Village in Bonjol Subdistrict, 2020</i>	91
4.3	PERDAGANGAN TRADE	
4.3.1	Nama Pasar dan Hari Pasar di Kecamatan Bonjol di Kecamatan Bonjol, 2020 <i>Names of Market and Market Day in Bonjol Subdistrict, 2020</i>	92
4.3.2	Banyaknya Nagari Menurut Sarana dan Prasarana Ekonomi Nagari dan Jenisnya di Kecamatan Bonjol, 2020 <i>Number of Villages by Types of Economic Facilities and Infrastructure in Bonjol Subdistrict, 2020</i>	93
4.3.3	Jumlah Penginapan, Kamar, dan Tempat Tidur di Kecamatan Bonjol, 2016-2020 <i>Number of Accomodations, Rooms, and Beds in Bonjol Subdistrict, 2016-2020</i>	94
4.3.4	Banyaknya Nagari Menurut Sarana Lembaga Keuangan yang Beroperasi dan Jenisnya di Kecamatan Bonjol, 2020 <i>Number of Villages by Types of Financial Institution Facilities Operating in Bonjol Subdistrict, 2020</i>	95
4.3.5	Banyaknya Nagari Menurut Jenis Koperasi yang Masih Aktif di Kecamatan Bonjol, 2020 <i>Number of Villages by Types of Cooperative Still Active in Bonjol Subdistrict, 2020</i>	96
4.3.6	Jumlah Koperasi dan Koperasi Unit Desa (KUD) di Kecamatan Bonjol, 2016-2020 <i>Number of Cooperatives and Village Unit Cooperatives in Bonjol Subdistrict, 2016-2020</i>	97
4.3.7	Nama Objek Wisata di Kecamatan Bonjol, 2020 <i>Names of Tourist Attraction in Bonjol Subdistrict, 2020</i>	99
4.3.8	Banyaknya Embung Desa Menurut Nagari di Kecamatan Bonjol, 2018-2020 <i>Number of Village Embungs by Village in Bonjol Subdistrict, 2018-2020</i>	100

DAFTAR GAMBAR/LIST OF FIGURES

	Halaman Page
1.1 Persentase Luas Nagari terhadap Luas Kecamatan Bonjol, 2020 <i>Percentage Village Area to Bonjol Subdistrict Area, 2020</i>	4

<https://pasamankab.bps.go.id>

GEOGRAFI DAN PEMERINTAHAN

GEOGRAPHY AND GOVERNMENT

LUAS WILAYAH

KECAMATAN BONJOL TAHUN 2020

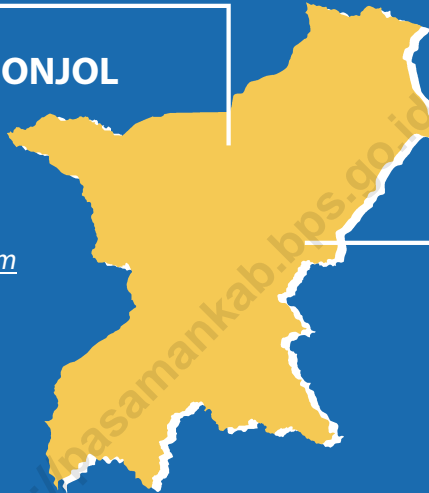
Total Area of Bonjol
Subdistrict, 2020

194,32 $\frac{\text{km}^2}{\text{sq.km}}$

LETAK GEOGRAFIS

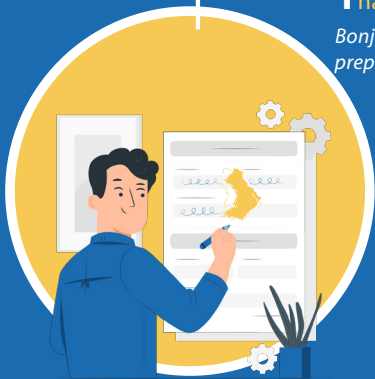
Geographical Location

100°09' - 100°21' BT
00°06'LU - 00°06' LS



Kecamatan Bonjol terdiri dari **4** nagari defenitif,
1 nagari persiapan, dan **30** jorong.

Bonjol Subdistrict consists of 4 definitive village, 1
preparatory villages, and 30 jorong.



“

'Nagari' adalah pembagian wilayah administratif sesudah kecamatan di Provinsi Sumatera Barat. Istilah nagari menggantikan istilah 'Desa' yang digunakan provinsi lain di Indonesia.

'Nagari' (village) is the division of administrative region after subdistrict in West Sumatra Province. In other province, it is called 'Desa'.

”

Sumber/Source:

Badan Pusat Statistik Kabupaten Pasaman/BPS-Statistics of Pasaman Regency
Dinas Pemberdayaan Masyarakat/Regional Office of Community Empowerment of Pasaman Regency

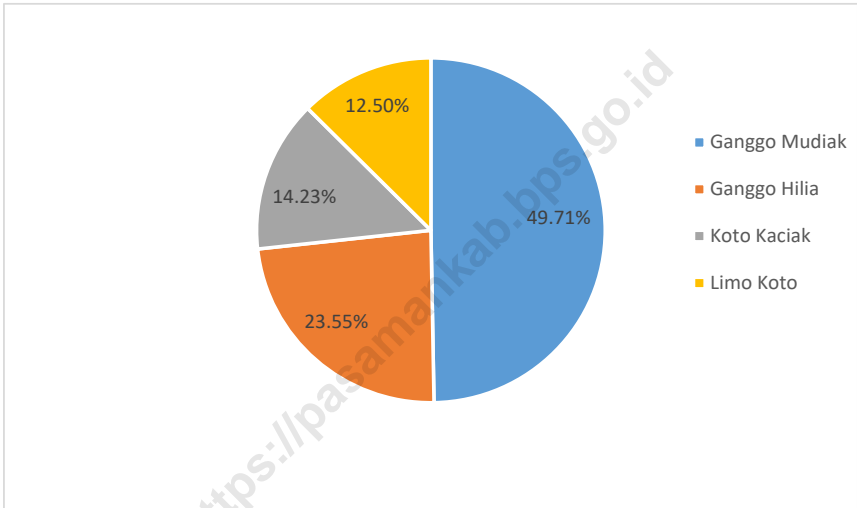
GEOGRAFI DAN PEMERINTAHAN

PENJELASAN TEKNIS

TECHNICAL NOTES

1. Secara astronomis, Kecamatan Bonjol terletak antara $00^{\circ} 06'$ lintang utara sampai $00^{\circ} 06'$ lintang selatan, dan antara $100^{\circ} 09'$ sampai $100^{\circ} 21'$ bujur timur.
 2. Kecamatan Bonjol memiliki luas $194,32 \text{ km}^2$. Batas-batas Kecamatan Bonjol adalah: Utara - Kecamatan Lubuk Sikaping, Selatan - Kabupaten Agam, Barat - Kecamatan Simpang Alahan Mati/Tigo Nagari, Timur - Kabupaten 50 Kota.
 3. 'Nagari' adalah pembagian wilayah administratif sesudah kecamatan di Provinsi Sumatera Barat. Istilah nagari menggantikan istilah 'Desa' yang digunakan provinsi lain di Indonesia.
 4. Kecamatan Bonjol terdiri dari 4 nagari defenitif dan 1 nagari persiapan, yaitu Koto Kaciak, Limo Koto, Ganggo Hilia, Ganggo Mudiak, dan Persiapan Koto Kaciak Barat.
1. *Astronomically, Bonjol Subdistrict is located between $00^{\circ} 06'$ north latitude and $00^{\circ} 06'$ south latitude, dan between $100^{\circ} 09'$ and $100^{\circ} 21'$ east longitude.*
 2. *Bonjol Subdistrict has area $194,32 \text{ km}^2$. Boundaries of Bonjol Subdistrict are: North - Lubuk Sikaping Regency, South - Agam Regency, West - Simpang Alahan Mati/Tigo Nagari Subdistrict, East - 50 Kota Regency.*
 3. *'Nagari' (village) is the division of administrative region after subdistrict in West Sumatra Province. In other province, it is called 'Desa'.*
 4. *Bonjol Subdistrict consists of 4 definitive villages and 1 preparatory villages, namely Koto Kaciak, Limo Koto, Ganggo Hilia, Ganggo Mudiak, and West Koto Kaciak Preparatory.*

Gambar 1.1 **Persentase Luas Nagari terhadap Luas Kecamatan Bonjol, 2020**
Figures **Percentage Village Area to Bonjol Subdistrict Area, 2020**



Sumber Data/Source: Badan Pusat Statistik Kabupaten Pasaman/BPS-Statistics of Pasaman Regency

1.1 GEOGRAFI/GEOGRAPHY

Tabel 1.1.1 Luas Nagari dan Persentasenya terhadap Luas Kecamatan Bonjol, 2020
Table Village Area and Percentage to Bonjol Subdistrict Area, 2020

	Nagari Village	Luas Total Area (Km²)	Persentase Terhadap Luas Kecamatan Percentage to Subdistrict Area
	(1)	(2)	(3)
1	Ganggo Mudiak	96,60	49,71
2	Ganggo Hilia	45,77	23,55
3	Koto Kaciak	27,66	14,23
4	Limo Koto	24,29	12,50
Bonjol		194,32	100,00

Sumber Data/Source: Badan Pusat Statistik Kabupaten Pasaman/BPS-Statistics of Pasaman Regency

GEOGRAPHY AND GOVERNMENT

Tabel 1.1.2 Letak Geografis Kecamatan Bonjol, 2020
Table Geographical Location of Bonjol Subdistrict, 2020

Uraian/Explanation		Keterangan/Note
(1)		(2)
1	Letak Geografis/ <i>Geographical Location</i>	100°09' - 100°21' BT 00°06' LU - 00°06' LS
2	Batas Daerah/ <i>Boundaries of Subdistrict</i>	
	Sebelah Utara/ <i>North</i>	Kecamatan Lubuk Sikaping
	Sebelah Selatan/ <i>South</i>	Kabupaten Agam
	Sebelah Barat/ <i>West</i>	Kecamatan Simpang Alahan Mati/Tigo Nagari
	Sebelah Timur/ <i>East</i>	Kabupaten 50 Kota
3	Luas Daerah/ <i>Total Area</i>	194,32 km ²
4	Ketinggian dari Permukaan Laut/ <i>Elevation Above Sea Level</i>	100-1 160 mdpl

Sumber Data/*Source*: Badan Pusat Statistik Kabupaten Pasaman/BPS-*Statistics of Pasaman Regency*

GEOGRAFI DAN PEMERINTAHAN

Tabel 1.1.3 Luas Daerah Menurut Kecamatan di Kabupaten Pasaman (km²), 2020
Area by Subdistrict in Pasaman Regency (sq.km), 2020

Kecamatan Subdistrict	Luas Daerah Total Area	
	(Km ² /sq.km)	Persentase Percentage
(1)	(2)	(3)
1. Tigo Nagari	352,92	8,94
2. Bonjol	194,32	4,92
3. Simpang Alahan Mati	69,56	1,76
4. Lubuk Sikaping	346,5	8,78
5. Dua Koto	360,63	9,14
6. Panti	194,5	4,93
7. Padang Gelugur	178,4	4,52
8. Rao	236,18	5,98
9. Rao Utara	598,63	15,16
10. Rao Selatan	338,98	8,59
11. Mapat Tunggul	605,29	15,33
12. Mapat Tunggul Selatan	471,72	11,95
Pasaman	3 947,63	100,00

Sumber Data/Sources: Badan Pusat Statistik Kabupaten Pasaman/BPS-Statistics of Pasaman Regency

GEOGRAPHY AND GOVERNMENT

Tabel 1.1.4 Jarak Nagari di Kecamatan Bonjol ke Ibukota Kecamatan, Ibukota Kabupaten, dan Ibukota Provinsi (km), 2020
Table *Distance from Villages in Bonjol Subdistrict to Capital City of Subdistrict, Capital City of Regency, and Capital City of Province (km), 2020*

	Nagari Village	Jarak ke Ibukota Distance to the Capital (km)		
		Kecamatan Subdistrict	Kabupaten Regency	Provinsi Province
	(1)	(2)	(3)	(4)
1	Ganggo Mudiak	2	18	157
2	Ganggo Hilia	1	21	152
3	Koto Kaciak	7	29	144
4	Limo Koto	5	27	142

Sumber Data/Source: Badan Pusat Statistik Kabupaten Pasaman/BPS-Statistics of Pasaman Regency

Tabel 1.1.5 Nama Sungai di Kecamatan Bonjol, 2020
Table Rivers in Bonjol Subdistrict, 2020

Uraian/Explanation			
(1)			
1	Batang Air Dareh	9	Anak Air Malandu
2	Batang Alahan Dareh	10	Batang
3	Batang Musus	11	Batang Silasung
4	Batang Bubus	12	Anak Air Sungai Limau
5	Anak Air Abu	13	Anak Air Sungai Limau
6	Anak Air Angek	14	Anak Air Sungai Hitam
7	Batang Manggani	15	Anak Air Marumuak
8	Anak Air Lundu		

Sumber Data/Source: Dinas Pekerjaan Umum dan Tata Ruang Kabupaten Pasaman/ Regional Office of Public Works and Spatial Planning of Pasaman Regency

GEOGRAPHY AND GOVERNMENT

1.2 PEMERINTAHAN/GOVERNMENT

Tabel 1.2.1 Nama Camat dan Masa Jabatannya di Kecamatan Bonjol, 2000-2020
Table Names of Subdistrict Head and Term of Office in Bonjol Subdistrict, 2000-2020

	Nama Camat Subdistrict	Masa Jabatan Term of Service
	(1)	(2)
1.	Abdul Asmi	2000-2001
2.	Fadlus Sabi, S.Sos	2001-2002
3.	Hasrizal	2002-2003
4.	M. Ihsan, S.Pi, M.Si	2003-2006
5.	Yanny Habbaintis, SH	2006-2007
6.	Teddy, M. S.Sip	2007-2009
7.	Alim Bazar, S.Sos	2009-2011
8.	Darius, SH, MM	2011-2013
9.	Miris, S.Ag, MH.	2013-2014
10.	Kaharuddin, SH	2014-2016
11.	Darmawi, SH	2016-2020
12.	Aan Afrinaldi, S BPP	2020

Sumber Data/Source: Pemerintah Kecamatan Bonjol/Government of Bonjol Subdistrict

Tabel 1.2.2 Nama Wali Nagari Menurut Tingkat Pendidikan di Kecamatan Bonjol, 2020
Table *Names of Village Head by Education Level in Bonjol Subdistrict, 2020*

	Nagari* Village*	Wali Nagari Village Head	Tingkat Pendidikan Level of Education
	(1)	(2)	(3)
1	Ganggo Mudiak	Aria Barito, SH	S1
2	Ganggo Hilia	Hafitah	SMA
3	Koto Kaciak	Zulfahmi	SMA
4	Limo Koto	Ismet Junaidi	SMA
5	Persiapan Koto Kaciak Barat	Syofinar. S.Sos.I	S1

Catatan/Note: *Data termasuk nagari persiapan/*The data includes the preparatory village*

Sumber Data/Source: Dinas Pemberdayaan Masyarakat/*Regional Office of Community Empowerment of Pasaman Regency*

GEOGRAPHY AND GOVERNMENT

Tabel 1.2.3 Nama Ketua Kerapatan Adat Nagari (LAN) Menurut Tingkat Pendidikan di Kecamatan Bonjol, 2020
Names of Nagari Traditional Organisation (KAN) Head by Education Level in Bonjol Subdistrict, 2020

	Nagari Village	Nama Ketua LAN Name of LAN Head	Tingkat Pendidikan Level of Education
	(1)	(2)	(3)
1	Ganggo Mudiak	Dt. Pamancah	S1
2	Ganggo Hilia	Dt. Ngamuak	D III
3	Koto Kaciak	Dt. Bagindo Kali	S1
4	Limo Koto	Dt. Bagindo	S2

Sumber Data/Source: Dinas Pemberdayaan Masyarakat/Regional Office of Community Empowerment of Pasaman Regency

GEOGRAFI DAN PEMERINTAHAN

Tabel 1.2.4 Nama Nagari dan Jorong di Kecamatan Bonjol, 2020
Table Names of Village and Jorong in Bonjol Subdistrict, 2020

Nagari <i>Village</i>		Jorong <i>Jorong</i>	
(1)		(2)	
1	Ganggo Mudiak	1	Biduak
		2	Koto Tengah
		3	Kampung Alai
		4	Kampung Baru
		6	Kampung Belimbing
		6	Kampung Tampang
		7	Lubuk Ambacang
2	Ganggo Hilia	1	Kampung Caniago
		2	Kampung Jambak
		3	Kampung Koto
		4	Kampung Sianok
		5	Kampung Talang
		6	Musus
		7	Padang Baru
		8	Padang Bubus
		9	Padang Laweh
		10	Pasar
		11	Tanjung Alai
		12	Tanjung Bungo

Lanjutan Tabel/Continued Table 1.2.4

		Nagari Village			Jorong Jorong
		(1)			(2)
3	Koto Kaciak		1	Koto Tuo	
			2	Tabing	
4	Limo Koto		1	Aia Abu	
			2	Batu Badinding Selatan	
			3	Batu Badinding Utara	
			4	Kampung Melayu	
			5	Pandam	
5	Persiapan Koto Kaciak Barat		1	Batu Hampar	
			2	Kampung Hangus	
			3	Lungguak Batu	
			4	Parik Gadang	

Catatan/Note:

*Data termasuk nagari persiapan/*The data includes the preparatory village*

Sumber Data/Source:

Dinas Pemberdayaan Masyarakat/*Regional Office of Community Empowerment of Pasaman Regency*



JUMLAH PENDUDUK

di Kecamatan Bonjol 2020

Total Population of Bonjol Subdistrict 2020

26 282

jiwa
people

Laki-laki

male

13 359 jiwa
people

Perempuan

female

12 923 jiwa
people

**Laju Pertumbuhan Penduduk
per Tahun 2010-2020**

Annual Growth Rate of Population (%)

1,22

**Kepadatan Penduduk
(per km²)**

Population Density per sq.km

135



**JUMLAH TENAGA
KESEHATAN**

di Kecamatan Bonjol 2020

Number of Medical Personnels of Bonjol Subdistrict
2020

- ▶ **Dokter (Spesialis, Umum, Gigi)** **8**
Doctor (Specialist, General, Dentist)
- ▶ **Perawat (Umum, Gigi)** **17**
Nurse (General, Dentist)
- ▶ **Bidan** **45**
Midwife



JUMLAH SEKOLAH

di Kecamatan Bonjol 2020

Number of Schools of Bonjol Subdistrict 2020

- ▶ **TK/Sederajat** **9**
Kindergarten/Equivalent
- ▶ **SD/Sederajat** **26**
Primary School/Equivalent
- ▶ **SMP/Sederajat** **5**
Lower Secondary School/
Equivalent
- ▶ **SMA/Sederajat** **5**
Upper Secondary School/
Equivalent

Sumber/Source:

Hasil SP2020 (September) Badan Pusat Statistik Kabupaten Pasaman/The result of the 2020 Population Census (September) BPS-
Statistics of Pasaman Regency

Badan Pusat Statistik Kabupaten Pasaman/BPS-Statistics of Pasaman Regency

Dinas Pendidikan dan Kebudayaan Kabupaten Pasaman/Regional Office of Educations and Culture of
Pasaman Regency

Dinas Kesehatan Kabupaten Pasaman/Regional Office of Health of Pasaman Regency

PENJELASAN TEKNIS

TECHNICAL NOTES

1. Salah satu sumber data kependudukan adalah sensus penduduk yang dilaksanakan setiap sepuluh tahun sekali. Sensus penduduk telah dilaksanakan sebanyak tujuh kali sejak Indonesia merdeka, yaitu tahun 1961, 1971, 1980, 1990, 2000, 2010, dan 2020.

Keenam sensus penduduk sebelumnya dilaksanakan dengan menggunakan metode tradisional, yaitu mencatat setiap penduduk dari rumah ke rumah. Pertama kalinya dalam sejarah sensus penduduk di Indonesia, Sensus Penduduk 2020 (SP2020) menggunakan metode kombinasi yaitu dengan memanfaatkan data Administrasi Kependudukan (Adminduk) dari Direktorat Jenderal Kependudukan dan Pencatatan Sipil (Ditjen Dukcapil) Kementerian Dalam Negeri (Kemendagri) sebagai data dasar pelaksanaan SP2020. Hal ini dirancang dan dilaksanakan sebagai upaya untuk mewujudkan "SATU DATA KEPENDUDUKAN INDONESIA".

Cakupan penduduk pada SP2020 adalah seluruh penduduk yang tinggal di wilayah teritorial Indonesia, mencakup Warga Negara Indonesia (WNI) dan Warga Negara Asing (WNA) yang telah menetap atau berencana menetap di wilayah Indonesia selama minimal satu tahun. WNI yang dicakup

1. *One of the source of demographic data is population census, which is conducted every ten years. Population Census has been conducted seven times since Indonesia's independence: 1961, 1971, 1980, 1990, 2000, 2010 and 2020. The previous six population censuses were carried out using the traditional method, canvassing each person door-to-door. For the first time in the history of the population census in Indonesia, the 2020 Population Census (SP2020) used a combined method, that is utilizing Population Administration data managed by the Directorate General of Population and Civil Registration of the Ministry of Home Affairs as the basic data for the population census. This is designed and implemented as an effort to realize "ONE INDONESIAN POPULATION DATA".*

The target for population coverage in Population Census 2020 is all residents who live in Indonesia's territory, including Indonesian citizens (WNI) and foreign citizens (WNA) who have stayed or plan to stay in Indonesian territory for at least one year. The Indonesian citizens who are covered

SOCIAL AND WELFARE

juga termasuk mereka yang berada di luar negeri, yaitu Anggota Korps Diplomatik Republik Indonesia beserta keluarganya di luar negeri dan Anggota TNI/POLRI beserta keluarganya yang sedang melakukan misi perdamaian di luar negeri.

Pengumpulan data dalam SP2020 dilakukan dengan berbagai moda yaitu Sensus Penduduk Online, Drop Off - Pick Up (DOPU) Kuesioner, dan wawancara. Adanya pandemi Coronavirus Disease (COVID-19) yang dihadapi dunia sejak awal tahun 2020 mendorong banyak kantor statistik nasional (National Statistics Office – NSO) untuk melakukan penyesuaian tata kelola penyelenggaraan Sensus Penduduk, termasuk juga BPS. Pendataan penduduk semula direncanakan dengan wawancara dan membagi wilayah menjadi dua zona dengan mempertimbangkan ketersediaan akses internet, yaitu zona yang menggunakan kuesioner kertas (Paper and Pencil Interviewing, PAPI) dan zona yang menggunakan elektronik (Computer Assisted Personal Interviewing, CAPI). Dengan adanya tata kelola baru, pendataan penduduk dibagi menjadi tiga zona, yaitu Zona 1 DOPU, Zona 2 Non-DOPU, dan Zona 3 Wawancara.

also include those who are abroad, namely members of the Diplomatic Corps of the Republic of Indonesia and their families abroad and members of the TNI / POLRI and their families who are carrying out Peacekeeping Missions abroad.

Data collection in SP2020 is carried out in various modes, namely Online Population Census, Drop Off - Pick Up (DOPU) Questionnaires, and interviews. The existence of the Coronavirus Disease (COVID-19) pandemic facing the world since the beginning of 2020 has prompted many national statistical offices (NSO) to make adjustments to the governance of the implementation of the Population Census, including BPS - Statistics Indonesia. Population data collection is originally planned by interview and divided the area into two zones taking into account the availability of internet access, namely the zone that uses paper questionnaires (Paper and Pencil Interviewing, PAPI) and the zone that uses electronics (Computer Assisted Personal Interviewing, CAPI). With the adjusted business processes, population data collection is divided into three zones, namely Zone 1 DOPU, Zone 2 Non-DOPU, and Zone 3 Interview.

SOSIAL DAN KESEJAHTERAAN RAKYAT

Dalam publikasi ini, data yang disajikan merupakan hasil SP2010 (Mei) dan hasil SP2020 (September).

In this publication, the data presented are the SP2010 results (May) and the SP2020 results (September).

2. Penduduk Kabupaten Pasaman adalah semua orang yang berdomisili di wilayah teritorial Kabupaten Pasaman, mencakup Warga Negara Indonesia (WNI) dan Warga Negara Asing (WNA) yang telah menetap selama satu tahun atau lebih atau berencana menetap di wilayah Indonesia selama minimal satu tahun. Pada sensus sebelumnya referensi waktu dalam konsep kependudukan adalah enam bulan. Perubahan ini didasari oleh UU No. 24 Tahun 2013 tentang Perubahan atas UU No. 23 Tahun 2006 tentang Administrasi Kependudukan pada Pasal 15.
2. *The population of Pasaman Regency are all people who live in Pasaman's territory, including Indonesian citizens and foreign citizens who have lived for one year or more or plan to stay in Indonesian territory for at least one year. In the previous census the time reference in the population concept was six months. This change is based on Law no. 24 of 2013 concerning Amendments to Law no. 23 of 2006 concerning Population Administration in Article 15.*
3. Kepadatan penduduk adalah ukuran persebaran penduduk yang menunjukkan jumlah penduduk untuk setiap kilometer persegi luas wilayah
3. *Population density is a measure of the distribution of the population which shows the total population for each square kilometer of area.*
4. Rasio jenis kelamin adalah perbandingan antara jumlah penduduk laki-laki dan jumlah penduduk perempuan pada suatu daerah dan waktu tertentu, yang biasanya dinyatakan dalam banyaknya penduduk laki-laki per 100 perempuan.
4. *Sex ratio is the ratio between total male population and total female population in a certain area and at a certain time, which is usually stated in the number of male residents per 100 female.*

SOCIAL AND WELFARE

5. Jalur Pendidikan di Indonesia terdiri atas 1) pendidikan formal, 2) pendidikan nonformal, dan 3) pendidikan informal yang ketiganya dapat saling melengkapi dan memperkaya (Undang-Undang No. 20 Tahun 2013 tentang Sistem Pendidikan Nasional).
 6. Jenjang Pendidikan Formal terdiri atas pendidikan dasar, pendidikan menengah, dan pendidikan tinggi. Jenis pendidikan yang diajarkan mencakup pendidikan umum, kejuruan, akademik, profesi, vokasi, keagamaan, dan khusus.
 - a. Pendidikan Dasar berbentuk Sekolah Dasar (SD) dan Madrasah Ibtidaiyah (MI) atau bentuk lain yang sederajat serta Sekolah Menengah Pertama (SMP) dan Madrasah Tsanawiyah (MTs), atau bentuk lain yang sederajat.
 - b. Pendidikan Menengah berbentuk Sekolah Menengah Atas (SMA), Madrasah Aliyah (MA), Sekolah Menengah Kejuruan (SMK), dan Madrasah Aliyah Kejuruan (MAK), atau bentuk lain yang sederajat.
 - c. Pendidikan Tinggi merupakan jenjang pendidikan setelah pendidikan menengah yang mencakup program pendidikan diploma, sarjana, magister, spesialis, dan doktor yang diselenggarakan oleh
5. *The Education System in Indonesia consists of 1) a formal education, 2) non-formal education, and 3) informal education that all three can be complementary and enriching (Law No. 20 Year 2013 about The National Education System).*
 6. *The Formal Education Level consists of primary education, secondary education, and high education. The kind of education that taught consists of general education, vocational, academic, professional, religious, and specific education.*
 - a. *The Primary Education consists of Elementary School and Islamic Elementary School or other equivalent forms and Junior High School and MTs, or other equivalent forms.*
 - b. *The Secondary Education consists of the senior high school, MA, Vocational School, and Vocational Madrasah Aliyah, or other equivalent forms.*
 - c. *The High Education consists of the education level after the secondary education that consists of diplomas, bachelor, master, specialist, and doctoral degrees that are held by*

SOSIAL DAN KESEJAHTERAAN RAKYAT

perguruan tinggi. Perguruan tinggi dapat berbentuk akademi, politeknik, sekolah tinggi, institut, atau universitas.

the college. The colleges can be academy, polytechnic, high school, institute, or university.

7. Rumah Sakit adalah tempat pemeriksaan dan perawatan kesehatan, biasanya berada di bawah pengawasan dokter/tenaga medis, yang melayani penderita yang sakit untuk berobat rawat jalan atau rawat inap.
7. Hospital is a place for health check, usually controlled/supervised by doctors/medical personnel to serve the ill patients to get outpatient or inpatient treatment services.
8. Rumah Sakit Bersalin adalah rumah sakit khusus untuk persalinan, dilengkapi pelayanan spesialis pemeriksaan kehamilan, persalinan, rawat inap dan rawat jalan ibu dan anak yang berada di bawah pengawasan dokter spesialis kandungan.
8. Maternity Hospital is a specialized hospital for childbirth, has specialist inspection service to pregnancy, childbirth, hospitalization and outpatient for mothers and children that is under the supervision of an obstetrician.
9. Rumah Bersalin adalah sarana pelayanan kesehatan dengan izin sebagai rumah bersalin, dilengkapi pelayanan pemeriksaan kehamilan, persalinan serta pemeriksaan ibu dan anak yang berada di bawah pengawasan bidan senior.
9. Maternity House is health care facility with a license as a maternity house, equipped with prenatal care, childbirth and examination of mothers and children which is under the supervision of a senior midwife.
10. Puskesmas (Pusat Kesehatan Masyarakat) adalah unit pelaksana teknis dinas kesehatan kabupaten/ kota yang mempunyai fungsi utama sebagai penyelenggara
10. Public Health Center is technical implementation unit of regency health department that have the primary function as a

SOCIAL AND WELFARE

pelayanan kesehatan tingkat pertama. Wilayah kerja puskesmas maksimal adalah satu kecamatan dan untuk dapat menjangkau wilayah kerjanya, puskesmas mempunyai jaringan pelayanan yang meliputi unit Puskesmas Pembantu (Pustu), unit Puskesmas Keliling (Puskel), dan unit bidan desa/komunitas (Peraturan Menteri Kesehatan RI No. 75 Tahun 2014 Tentang Pusat Kesehatan Masyarakat).

first-level health care providers. The working area standard of public health center is one district and to reach their working areas, public health centers have a service network covering subsidiary of public health center, mobile public health center units, and midwife units (Regulation of the Minister of Health of Indonesia Number 75 Year 2014 about Public Health Center).

11. Poliklinik adalah sarana kesehatan yang dipakai untuk pelayanan berobat jalan, biasanya berada di bawah pengawasan dokter/tenaga medis.
12. Apotek adalah suatu tempat tertentu yang digunakan untuk melakukan pekerjaan kefarmasian, dan penyaluran/penjualan obat atau bahan farmasi dan perbekalan kesehatan lainnya kepada masyarakat yang dikelola oleh tenaga apoteker (Peraturan Menteri Kesehatan RI No. 1332 Tahun 2002 Tentang Perubahan Atas Peraturan Menteri Kesehatan RI No. 922/MENKES/PER/X/1993 Tentang Ketentuan dan Tata Cara Pemberian Izin Apotek).

11. *Polyclinic is a health facility in which to get outpatient services, usually under the control of doctor/medical personnel.*
12. *Pharmacy is a specific place that is used for pharmaceutical jobs, and distribution/sale of drugs/pharmaceuticals and other medical supplies to people that are administered by trained pharmacist (Regulation of the Minister of Health of Indonesia Number 1332 Year 2002 about the Changes of Regulation of the Minister of Health of Indonesia Number 922/MENKES/PER/X/1993 about Pro-vision and Procedures for Administration of Licensed Pharmacies).*

SOSIAL DAN KESEJAHTERAAN RAKYAT

13. Bencana Alam adalah peristiwa atau serangkaian peristiwa yang mengancam dan mengganggu kehidupan/penghidupan masyarakat yang disebabkan oleh faktor alam antara lain berupa gempa bumi, tsunami, gunung meletus, banjir, kekeringan, angin topan, dan tanah longsor sehingga mengakibatkan kerugian materi maupun non-materi.
 14. Korban meninggal adalah orang yang dilaporkan tewas atau meninggal dunia akibat bencana.
 15. Korban hilang adalah orang yang dilaporkan hilang atau tidak ditemukan atau tidak diketahui keberadaannya setelah terjadi bencana.
 16. Korban luka/sakit adalah orang yang mengalami luka-luka atau sakit, dalam keadaan luka ringan, luka sedang maupun luka parah/berat, baik yang berobat jalan maupun rawat inap.
13. *Natural Disaster is an event or series of events that threaten and disrupt the lives and livelihoods caused by natural factors such as: earthquake, tsunami, volcanic eruption, flood, flash flood, drought, typhoon/cyclone, and landslide so it can lead to result in loss of material and non-material.*
 14. *Fatality is a person reported killed or death in the wake of a disaster.*
 15. *Missing person is a person reported missing or who cannot be located or who cannot be accounted for in the wake of a disaster.*
 16. *Casualty is a person suffering injury or illness, in a state of light injury, moderate injury, or heavy injury, which in undergoing treatment as either an outpatient or inpatient.*

2.1 PENDUDUK/POPULATION

Tabel 2.1.1 Penduduk, Laju Pertumbuhan Penduduk, Distribusi Persentase Penduduk, Kepadatan Penduduk, Rasio Jenis Kelamin Menurut Nagari di Kecamatan Bonjol, 2020
Table Population, Population Growth Rate, Percentage Distribution of Population, Population Density, and Sex Ratio by Village in Bonjol Subdistrict, 2020

	Nagari Village	Penduduk Population	Laju Pertumbuhan Penduduk per Tahun 2010-2020 ^{2,3} Annual Growth Rate of Population (%) 2010-2020 ^{2,3}
	(1)	(2)	(3)
1	Ganggo Mudiak	4 762	1,08
2	Ganggo Hilia	8 173	1,15
3	Koto Kaciak	7 822	1,27
4	Limo Koto	5 525	1,37
	Bonjol	26 282	1,22

Lanjutan Tabel/Continued Table 2.1.1

	Nagari Village	Persentase Penduduk Percentage of Total Population	Kepadatan Penduduk (per km²)⁴ Population Density per sq.km⁴
	(1)	(4)	(5)
1	Ganggo Mudiak	1,59	49
2	Ganggo Hilia	2,73	179
3	Koto Kaciak	2,61	283
4	Limo Koto	1,84	227
	Bonjol	8,77	135

Lanjutan Tabel/*Continued Table 2.1.1*

Nagari <i>Village</i>		Rasio Jenis Kelamin <i>Sex Ratio</i>
(1)		(6)
1	Ganggo Mudiak	105,17
2	Ganggo Hilia	102,45
3	Koto Kaciak	104,44
4	Limo Koto	101,72
Bonjol		103,37

Catatan/Note: ¹ Hasil SP2020 (September)/*The result of the 2020 Population Census (September)*

² Laju pertumbuhan penduduk dihitung berdasarkan penduduk hasil SP2010 dengan kondisi desa/kelurahan tahun 2020, dibandingkan dengan penduduk hasil SP2020/*The growth rate refers to the change of population resulting from 2010 Population census with villages/kelurahan conditions in 2020 and population resulting from 2020 Population Census*

³ Laju pertumbuhan penduduk terlalu tinggi atau negatif karena adanya perubahan wilayah pada desa/kelurahan antara SP2010 dan SP2020/*The growth rate is too high or negative due to changes in the area of the village/kelurahan between SP2020 and SP2020*

⁴ Luas desa/kelurahan berdasarkan Peraturan Menteri Dalam Negeri No 66 Tahun 2011 tanggal 28 Desember 2011/*Villages/Kelurahan are based on Minister of Home Affairs Regulation No 66/2011, December 2008,2011*

Sumber/Source: Hasil SP2020 (September) Badan Pusat Statistik Kabupaten Pasaman/*The result of the 2020 Population Census (September) BPS-Statistics of Pasaman Regency*

SOCIAL AND WELFARE

Tabel 2.1.2 Jumlah Penduduk Menurut Kelompok Umur dan Jenis Kelamin di Kecamatan Bonjol, 2020
Table Population by Age Group and Sex in Bonjol Subdistrict, 2020

Kelompok Umur Ages	Jenis Kelamin/Sex		
	Laki-laki Male	Perempuan Female	Jumlah Total
(1)	(2)	(3)	(4)
0 - 14	3 460	3 269	6 729
15 - 64	9 164	8 632	17 796
65+	735	1 022	1 757
Bonjol	13 359	12 923	26 282

Catatan/Note: Hasil Perapihan Umur dari Data Administrasi Kependudukan dan Sensus Penduduk 2020 (September) / *The Result of Smoothed Single Year of Age from Population Administration Data and the 2020 Population Census (September)*

Sumber/Source: Hasil SP2020 (September) Badan Pusat Statistik Kabupaten Pasaman / *The result of the 2020 Population Census (September) BPS-Statistics of Pasaman Regency*

SOSIAL DAN KESEJAHTERAAN RAKYAT

Tabel 2.1.3 Jumlah Penduduk Menurut Jenis Kelamin di Kecamatan Bonjol, 2014 - 2020
Table Population by Gender in Bonjol Subdistrict, 2014-2020

Tahun Years	Laki-laki Male	Perempuan Female	Jumlah Total	Rasio Jenis Kelamin Sex Ratio
(1)	(2)	(3)	(4)	(5)
2014	12 986	12 890	25 876	100,74
2015	12 954	12 859	25 813	100,74
2016	13 214	13 112	26 326	100,78
2017	13 485	13 354	26 839	100,98
2018	13 747	13 598	27 345	101,10
2019	14 001	13 851	27 852	101,08
2020	13 359	12 923	26 282	103,37

Sumber Data/Source: Badan Pusat Statistik Kabupaten Pasaman/BPS-Statistics of Pasaman Regency

SOCIAL AND WELFARE

Tabel 2.1.4 Jumlah Penduduk Menurut Jenis Kelamin dan Rasio Jenis Kelamin Menurut Kecamatan di Kabupaten Pasaman, 2020
Population by Gender and Sex Ratio by Subdistrict in Pasaman Regency, 2020

	Kecamatan Subdistrict	Laki-laki Male	Perempuan Female	Jumlah Total	Rasio Jenis Kelamin Sex Ratio
	(1)	(2)	(3)	(4)	(5)
1	Bonjol	13 359	12 923	26 282	103,37
2	Tigo Nagari	15 261	14 682	29 943	103,94
3	Simpang Alahan Mati	6 266	6 118	12 384	102,42
4	Lubuk Sikaping	25 537	25 555	51 092	99,93
5	Dua Koto	14 389	14 320	28 709	100,48
6	Panti	17 409	17 110	34 519	101,75
7	Padang Gelugur	16 350	16 374	32 724	99,85
8	Rao	13 057	12 984	26 041	100,56
9	Mapat Tunggul	5 180	4 985	10 165	103,91
10	Mapat Tunggul Selatan	4 940	4 808	9 748	102,75
11	Rao Selatan	13 020	13 172	26 192	98,85
12	Rao Utara	6 030	6 022	12 052	100,13

Sumber Data/Source: Badan Pusat Statistik Kabupaten Pasaman/BPS-Statistics of Pasaman Regency

2.2 PENDIDIKAN/EDUCATION

Tabel 2.2.1 Banyaknya Nagari Menurut Keberadaan Sekolah Dasar (SD) dan Madrasah Ibtidaiyah (MI) di Kecamatan Bonjol, 2020
Table Number of Villages by Existence Elementary School and Madrasah Ibtidaiyah in Bonjol Subdistrict, 2020

Jenis Sekolah <i>Kind of Schools</i>	Jumlah Nagari* <i>Number of Villages</i>
(1)	(2)
Sekolah Dasar (SD)/Primary Schools	
Negeri/Public	5
Swasta/Private	-
Madrasah Ibtidaiyah (MI)/Madrasah Ibtidaiyah	
Negeri/Public	2
Swasta/Private	-

Catatan/Note:

*Data termasuk nagari persiapan/*The data includes the preparatory village*

Sumber Data/Source:

Badan Pusat Statistik Kabupaten Pasaman, Pendataan Potensi Desa (Podes) 2020/BPS-Statistics of Pasaman Regency Village Potential Data Collection (Podes) 2020

SOCIAL AND WELFARE

Tabel 2.2.2 Banyaknya Nagari Menurut Keberadaan Sekolah Menengah Pertama (SMP) dan Madrasah Tsanawiyah (MTs) di Kecamatan Bonjol, 2020
Table *Number of Villages by Existence Junior High School and Madrasah Tsanawiyah in Bonjol Subdistrict, 2020*

Jenis Sekolah <i>Kind of Schools</i>	Jumlah Nagari* <i>Number of Villages</i>
(1)	(2)
Sekolah Menengah Pertama (SMP)/Lower Secondary Schools	
Negeri/ <i>Public</i>	3
Swasta/ <i>Private</i>	-
Madrasah Tsanawiyah (MTs)/Madrasah Tsanawiyah	
Negeri/ <i>Public</i>	1
Swasta/ <i>Private</i>	1

Catatan/*Note:*

*Data termasuk nagari persiapan/*The data includes the preparatory village*

Sumber Data/*Source:*

Badan Pusat Statistik Kabupaten Pasaman, Pendataan Potensi Desa (Podes) 2020/*BPS-Statistics of Pasaman Regency Village Potential Data Collection (Podes) 2020*

Tabel 2.2.3 Banyaknya Nagari Menurut Keberadaan Sekolah Menengah Atas (SMA)/sederajat dan Perguruan Tinggi di Kecamatan Bonjol, 2020
Number of Villages by Existence Senior High School and College in Bonjol Subdistrict, 2020

Jenis Sekolah <i>Kind of Schools</i>	Jumlah Nagari* <i>Number of Villages</i>
(1)	(2)
Sekolah Menengah Atas (SMA)/Upper Secondary Schools	
Negeri/Public	1
Swasta/Private	1
Madrasah Aliyah (MA)/Madrasah Aliyah	
Negeri/Public	-
Swasta/Private	2
Sekolah Menengah Kejuruan (SMK)/Vocational High Schools	
Negeri/Public	1
Swasta/Private	-
Akademi/Perguruan Tinggi/Academy/Colleges	
Negeri/Public	-
Swasta/Private	-

Catatan/Note: *Data termasuk nagari persiapan/*The data includes the preparatory village*
 Sumber Data/Source: Badan Pusat Statistik Kabupaten Pasaman, Pendataan Potensi Desa (Podes) 2020/BPS-Statistics of Pasaman Regency Village Potential Data Collection (Podes) 2020

SOCIAL AND WELFARE

Tabel 2.2.4 Banyaknya Nagari Menurut Kemudahan Untuk Mencapai Sarana Pendidikan Terdekat Bagi Nagari di Kecamatan Bonjol, 2020
Number of Villages by Ease of Reaching the Closest Educational Facilities for Villages in Bonjol Subdistrict, 2020

Sarana Pendidikan Education Facility	Jumlah Nagari dengan Tingkat Kemudahan* Number of Nagari with Ease Level*			
	Sangat Mudah Very Easy	Mudah Easy	Sulit Difficult	Sangat Sulit Very Difficult
(1)	(2)	(3)	(4)	(5)
SD/Primary School	-	-	-	-
MI/Madrasah Ibtidaiyah	-	3	-	-
SMP/Lower Secondary School	-	2	-	-
MTs/Madrasah Tsanawiyah	-	3	-	-
SMA/Upper Secondary School	-	3	-	-
MA/Madrasah Aliyah	-	3	-	-
SMK/Vocational High School	-	4	-	-
Akademi/Perguruan Tinggi/Academy/Colleges	-	5	0	0

Catatan/Note:

*Data termasuk nagari persiapan/The data includes the preparatory village

"-" Artinya di nagari tersebut ada jenjang pendidikan yang dimaksud/ "-" This means that in the nagari there is a level of education in question

Sumber Data/Source:

Badan Pusat Statistik Kabupaten Pasaman, Pendataan Potensi Desa (Podes) 2020/BPS-Statistics of Pasaman Regency Village Potential Data Collection (Podes) 2020

SOSIAL DAN KESEJAHTERAAN RAKYAT

Tabel 2.2.5 Jumlah Sekolah, Guru, dan Murid Menurut Jenjang Pendidikan di Kecamatan Bonjol, 2019/2020 and 2020/2021
Number of Schools, Teachers, and Pupils by Educational Level in Bonjol Subdistrict, 2019/2020 and 2020/2021

Jenjang Pendidikan Educational Level	Sekolah/Schools	
	2019/2020	2020/2021
(1)	(2)	(3)
TK/Sederajat Kindergarten/Equivalent		
TK/Kindergarten	30	8
RA/Raudatul Athfal	1	1
SD/Sederajat Primary School/Equivalent		
SD/Primary School	25	25
MI/Madrasah Ibtidaiyah	1	1
SMP/Sederajat Lower Secondary School/Equivalent		
SMP/Lower Secondary School	3	3
MTS/Madrasah Tsanawiyah	2	2
SMA/Sederajat Upper Secondary School/Equivalent		
SMA/Upper Secondary School	2	2
MA/Madrasah Aliyah		2
SMK/Vocational High School	1	1

Lanjutan Tabel/*Continued Table 2.2.5*

Jenjang Pendidikan <i>Educational Level</i>	Guru/Teachers*	
	2019/2020	2020/2021
(1)	(2)	(3)
TK/Sederajat <i>Kindergarten/Equivalent</i>		
TK/Kindergarten	81	34
RA/Raudatul Athfal	3	3
SD/Sederajat <i>Primary School/Equivalent</i>		
SD/Primary School	207	201
MI/Madrasah Ibtidaiyah	8	13
SMP/Sederajat <i>Lower Secondary School/Equivalent</i>		
SMP/Lower Secondary School	78	80
MTS/Madrasah Tsanawiyah	58	58
SMA/Sederajat <i>Upper Secondary School/Equivalent</i>		
SMA/Upper Secondary School	59	58
MA/Madrasah Aliyah		40
SMK/Vocational High School	47	50

SOSIAL DAN KESEJAHTERAAN RAKYAT

Lanjutan Tabel/*Continued Table 2.2.5*

Jenjang Pendidikan <i>Educational Level</i>	Murid/ <i>Pupils*</i>	
	2019/2020	2020/2021
(1)	(2)	(3)
TK/Sederajat <i>Kindergarten/Equivalent</i>		
TK/Kindergarten	752	233
RA/Raudatul Athfal	17	10
SD/Sederajat <i>Primary School/Equivalent</i>		
SD/Primary School	3 208	3 054
MI/Madrasah Ibtidaiyah	180	174
SMP/Sederajat <i>Lower Secondary School/Equivalent</i>		
SMP/Lower Secondary School	949	1 006
MTS/Madrasah Tsanawiyah	722	733
SMA/Sederajat <i>Upper Secondary School/Equivalent</i>		
SMA/Upper Secondary School	831	892
MA/Madrasah Aliyah		133
SMK/Vocational High School	686	724

Catatan/*Note:*

*Jumlah guru termasuk kepala sekolah dan guru/*The total of teachers including headmaster dan teacher*

Sumber Data/*Source:*

Dinas Pendidikan dan Kebudayaan Kabupaten Pasaman/*Regional Office of Educations and Culture of Pasaman Regency*

SOCIAL AND WELFARE

2.3 KESEHATAN

Tabel 2.3.1 Banyaknya Nagari Menurut Keberadaan Sarana Kesehatan dan Jenis Sarana Kesehatan di Kecamatan Bonjol, 2020
Table *Number of Villages by Existence Health Facilities and Kinds of the Facility in Bonjol Subdistrict, 2020*

Fasilitas Kesehatan <i>Medical Facilities</i>	Jumlah Nagari* <i>Number of Villages</i>
(1)	(2)
Rumah Sakit/ <i>General Hospital</i>	-
Rumah Sakit Bersalin/ <i>Maternity Hospital</i>	-
Poliklinik/Balai Pengobatan/ <i>Medical Clinic</i>	1
Puskesmas/ <i>Public Health Center</i>	2
Rawat Inap/ <i>Inpatient</i>	1
Tanpa Rawat Inap/ <i>Non-Hospitalized</i>	1
Apotek/ <i>Pharmacy</i>	1

Catatan/*Note:*

*Data termasuk nagari persiapan/*The data includes the preparatory village*

Sumber Data/*Source:*

Badan Pusat Statistik Kabupaten Pasaman, Pendataan Potensi Desa (Podes) 2020/*BPS-Statistics of Pasaman Regency Village Potential Data Collection (Podes) 2020*

SOSIAL DAN KESEJAHTERAAN RAKYAT

Tabel 2.3.2 Banyaknya Nagari Menurut Kemudahan Untuk Mencapai Sarana Kesehatan Terdekat Bagi Nagari di Kecamatan Bonjol, 2020
Number of Villages by Ease of Reaching the Closest Health Facilities for Villages in Bonjol Subdistrict, 2020

Sarana Kesehatan <i>Medical Facilities</i>	Jumlah Nagari dengan Tingkat Kemudahan* <i>Number of Nagari with Ease Level*</i>			
	Sangat Mudah <i>Very Easy</i>	Mudah <i>Easy</i>	Sulit <i>Difficult</i>	Sangat Sulit <i>Very Difficult</i>
(1)	(2)	(3)	(4)	(5)
Rumah Sakit/ <i>General Hospital</i>	0	5	0	0
Rumah Sakit Bersalin/ <i>Maternity Hospital</i>	0	0	5	0
Poliklinik/Balai Pengobatan/ <i>Medical Clinic</i>	0	3	2	0
Puskesmas/ <i>Public Health Center</i>				
Rawat Inap/ <i>Inpatient</i>	2	2	-	-
Tanpa Rawat Inap/ <i>Non-Hospitalized</i>	2	2	-	-
Apotek/ <i>Pharmacy</i>	-	4	-	-

Catatan/Note:

*Data termasuk nagari persiapan/*The data includes the preparatory village*

"-" Artinya di nagari tersebut ada sarana kesehatan yang dimaksud/ "—" *This means that in the nagari there is a health facilities in question*

Sumber Data/Source:

Badan Pusat Statistik Kabupaten Pasaman, Pendataan Potensi Desa (Podes) 2020/BPS-Statistics of Pasaman Regency Village Potential Data Collection (Podes) 2020

SOCIAL AND WELFARE

Tabel 2.3.3 Banyaknya Nagari Menurut Keberadaan Penderita Gizi Buruk di Kecamatan Bonjol, 2019-2020
Number of Villages by Existence Severes Manultrition in Bonjol Subdistrict, 2019-2020

Fasilitas Kesehatan <i>Medical Facilities</i>	Jumlah Nagari* <i>Number of Villages</i>
(1)	(2)
2019	-
2020	-

Catatan/Note:

*Data termasuk nagari persiapan/*The data includes the preparatory village*

Sumber Data/Source:

Badan Pusat Statistik Kabupaten Pasaman, Pendataan Potensi Desa (Podes) 2020/BPS-Statistics of Pasaman Regency Village Potential Data Collection (Podes) 2019-2020

SOSIAL DAN KESEJAHTERAAN RAKYAT

Tabel 2.3.4 Jumlah Tenaga Kesehatan di Kecamatan Bonjol, 2019-2020
Table Number of Medical Personnels in Bonjol Subdistrict, 2019-2020

Jenis Tenaga Kesehatan Medical Personnels	2019	2020
(1)	(2)	(3)
Dokter/Doctor		
Spesialis/Specialist	-	-
Umum/General	3	5
Gigi/Dentist	2	3
Perawat/Nurse		
Umum/General	9	15
Gigi/Dentist	2	2
Bidan/Midwife	34	45

Sumber Data/Source: Dinas Kesehatan Kabupaten Pasaman/Regional Office of Health of Pasaman Regency

SOCIAL AND WELFARE

Tabel 2.3.5 Jumlah Fasilitas Kesehatan di Kecamatan Bonjol, 2019-2020
Table Number of Health Facilities in Bonjol Subdistrict, 2019-2020

Jenis Fasilitas Kind of Facilities	2019	2020
(1)	(2)	(3)
Rumah Sakit Umum/ <i>General Hospital</i>	-	-
Rumah Sakit Khusus/ <i>Special Hospital</i>	-	-
Rumah Sakit Bersalin/Rumah Bersalin/ <i>Maternity Hospital</i>	-	-
Puskesmas/ <i>Public Health Center</i>	2	2
Klinik/Balai Kesehatan/ <i>Medical Clinic</i>	-	-
Posyandu/ <i>Integrated Service Post</i>	43	46
Polindes/ <i>Village Maternity Cottage</i>	13	13

Sumber Data/Source: Dinas Kesehatan Kabupaten Pasaman/*Regional Office of Health of Pasaman Regency*

2.4 AGAMA DAN SOSIAL LAINNYA

Tabel 2.4.1 Jumlah Tempat Peribadatan di Kecamatan Bonjol, 2019-2020
Number of Places of Worship in Bonjol Subdistrict, 2019-2020

Nagari Villages	2019	2020
(1)	(2)	(3)
Masjid/Mosque	26	26
Mushola/Pray Room	100	109
Gereja Protestan/Protestan Church	-	-
Gereja Khatolik/Catholic Church	-	-
Pura/Temple	-	-
Wihara/Shrine	-	-

Sumber Data/Source : Kementerian Agama Kabupaten Pasaman/Ministry of Religious Affairs of Pasaman Regency

SOCIAL AND WELFARE

Tabel 2.4.2 Jumlah Nikah di Kecamatan Bonjol, 2016-2020
Table *Number of Marriages in Bonjol Subdistrict, 2016-2020*

Tahun Years	Nikah Marriages
(1)	(2)
2016	225
2017	243
2018	237
2019	272
2020	225

Sumber Data/Source : Kementerian Agama Kabupaten Pasaman/Ministry of Religious Affairs of Pasaman Regency

Tabel 2.4.3 Jumlah Ternak Qurban, Peserta, dan Penerima Qurban di Kecamatan Bonjol, 2016-2020
Number of Cattles Slaughtered, Participants, and Receivers in Tigo Nagari Subdistrict 2016-2020

Tahun Year	Peserta Qurban Sacrifice	Penerima Receiver	Jenis Ternak Cattle			Jumlah Total
			Kambing Goat	Sapi Cow	Kerbau Buffalo	
(1)	(2)	(3)	(4)	(5)	(6)	(7)
2016	1 025	10 430	7	103	-	110
2017	491	6 310	1	70	-	71
2018	532	10 517	4	75	-	79
2019	576	13 599	-	45	-	45
2020	82	5 430	5	77	-	82

Sumber Data/Source : Kementerian Agama Kabupaten Pasaman/Ministry of Religious Affairs of Pasaman Regency

SOCIAL AND WELFARE

Tabel 2.4.4 Jumlah Penerbitan Kutipan Akta Kelahiran di Kecamatan Bonjol, 2016-2020
Table *Number of Citations of Birth Certificate in Bonjol Subdistrict, 2016-2020*

Tahun Year	Laki-laki Male	Perempuan Female	Jumlah Total
(1)	(2)	(3)	(4)
2016	752	727	1 479
2017	581	555	1 136
2018	877	796	1 673
2019	672	628	1 300
2020	430	341	771

Sumber Data/Source: Dinas Kependudukan dan Pencatatan Sipil Kabupaten Pasaman/Regional Office of Citizenship and Civil Registration of Pasaman Regency

Tabel 2.4.5 **Banyaknya Nagari Menurut Jenis Pengguna Listrik di Kecamatan Bonjol, 2020**
Table *Number of Villages by Types of Electricity Users in Bonjol Subdistrict, 2020*

Jenis Pengguna Listrik <i>Kind of Electricity Users</i>	Jumlah Nagari* <i>Number of Villages*</i>
(1)	(2)
Pengguna Listrik/ <i>Electricity Users</i>	
PLN/ <i>PLN</i>	5
Non PLN/ <i>Non PLN</i>	-
Bukan Pengguna Listrik/ <i>Not Electricity Users</i>	1

Catatan/*Note:*

*Data termasuk nagari persiapan/*The data includes the preparatory village*

Sumber Data/*Source:*

Badan Pusat Statistik Kabupaten Pasaman, Pendataan Potensi Desa (Podes) 2020/*BPS-Statistics of Pasaman Regency Village Potential Data Collection (Podes) 2020*

SOCIAL AND WELFARE

Tabel 2.4.6 **Banyaknya Nagari Menurut Keberadaan Penerangan Jalan Utama Nagari di Kecamatan Bonjol, 2018-2020**
Number of Villages by Existence Village Main Street Lighting in Bonjol Subdistrict, 2018-2020

Penerangan Jalan Utama Main Street Lighting	2018*	2019*	2020*
(1)	(2)	(3)	(4)
Sumber Penerangan Jalan Utama/Main Street Lighting Source			
Listrik Pemerintah/Government Electricity	...	4	5
Listrik Non Pemerintah/Non-Government Electricity	...	1	-

Catatan/Note:

Sumber Data/Source:

*Data termasuk nagari persiapan/The data includes the preparatory village
Badan Pusat Statistik Kabupaten Pasaman, Pendataan Potensi Desa (Podes) 2020/BPS-Statistics of Pasaman Regency Village Potential Data Collection (Podes) 2018-2020

Tabel
Table

2.4.7 Banyaknya Nagari Menurut Jenis Bahan Bakar untuk Memasak yang Digunakan Oleh Sebagian Besar Keluarga di Kecamatan Bonjol, 2018-2020
Number of Villages by Types of Fuel for Cooking Used by Most Families in Bonjol Subdistrict, 2018-2020

Jenis Bahan Bakar <i>Types of Fuel</i>	2018*	2019*	2020*
(1)	(2)	(3)	(4)
Gas Kota/City Gas	-	-	-
LPG 3 Kg ¹ /LPG 3 Kg ¹	3	5	5
LPG lebih dari 3 Kg/LPG more than 3 Kg	5
Minyak tanah/Kerosene	-	-	3
Kayu bakar/Firewood	2	-	5
Lainnya/Others	-	-	-

Catatan/Note:

*Data termasuk nagari persiapan/*The data includes the preparatory village*

¹Data LPG 3 Kg tahun 2018 dan 2019 termasuk LPG lebih dari 3 Kg/¹*Data for LPG 3 Kg in 2018 and 2019 including LPG more than 3 Kg*

Sumber Data/Source:

Badan Pusat Statistik Kabupaten Pasaman, Pendataan Potensi Desa (Podes) 2020/*BPS-Statistics of Pasaman Regency Village Potential Data Collection (Podes) 2018-2020*

SOCIAL AND WELFARE

Tabel 2.4.8 **Banyaknya Nagari Menurut Sumber Air Minum Sebagian Besar Keluarga di Kecamatan Bonjol, 2018-2020**
Table 2.4.8 **Villages by Drinking Water Source Most Families in Bonjol Subdistrict, 2018-2020**

Sumber Air Minum Drinking Water Sources	2018*	2019*	2020*
(1)	(2)	(3)	(4)
Air Kemasan Bermerk/ <i>Branded Bottled Water</i>	-	-	-
Air Isi Ulang/ <i>Refill Water</i>	1	-	2
Ledeng Dengan Meteran/ <i>Plumbing With Meter</i>	2	3	3
Ledeng Tanpa Meteran/ <i>Plumbing Without Meter</i>	1	1	-
Sumur Bor Atau Pomba/ <i>Borehole or Pump</i>	-	-	-
Sumur/ <i>Wells</i>	-	-	-
Mata Air/ <i>Water Springs</i>	1	1	-
Sungai/Danau/Kolam/ Waduk/Situ/ Embung/Bendungan <i>River/Lake/Pond/Reservoir/Situ/ Reservoir/Dam</i>	-	-	-
Air Hujan/ <i>Rainwater</i>	-	-	-
Lainnya/ <i>Others</i>	-	-	-

Catatan/*Note:*

*Data termasuk nagari persiapan/*The data includes the preparatory village*

Sumber Data/*Source:*

Badan Pusat Statistik Kabupaten Pasaman, Pendataan Potensi Desa (Podes) 2020/*BPS-Statistics of Pasaman Regency Village Potential Data Collection (Podes) 2018-2020*

Tabel 2.4.9 Banyaknya Nagari Menurut Penggunaan Fasilitas Tempat Buang Air Besar Sebagian Besar Keluarga di Kecamatan Bonjol, 2018-2020
Number of Villages by Usage of Facilities for Defecation Most Families in Bonjol Subdistrict, 2018-2020

Fasilitas Tempat Buang Air Besar Facilities for Defecation	2018*	2019*	2020*
(1)	(2)	(3)	(4)
Jamban/ <i>Toilet</i>			
Sendiri/ <i>Private</i>	5	5	5
Bersama/ <i>Together</i>	-	-	-
Umum/ <i>Public</i>	-	-	-
Bukan Jamban/ <i>Not Toilet</i>	-	-	-

Catatan/*Note*: *Data termasuk nagari persiapan/*The data includes the preparatory village*
 Sumber Data/*Source*: Badan Pusat Statistik Kabupaten Pasaman, Pendataan Potensi Desa (Podes) 2020/*BPS-Statistics of Pasaman Regency Village Potential Data Collection (Podes) 2018-2020*

SOCIAL AND WELFARE

Tabel 2.4.10 **Banyaknya Nagari menurut Jenis Kejadian Bencana Alam di Kecamatan Bonjol, 2020**
Table *Number of Villages by Types of Natural Disasters in Bonjol Subdistrict, 2020*

Bencana Alam Natural Disasters	Jumlah Nagari* Number of Villages*
(1)	(2)
Gempa Bumi/ <i>Earthquake</i>	-
Tsunami/ <i>Tsunami</i>	-
Gunung Meletus/ <i>Volcanic Eruption</i>	-
Tanah Longsor/ <i>Landslide</i>	-
Banjir/ <i>Flood</i>	1
Banjir Bandang/ <i>Flash Flood</i>	-
Kekeringan/ <i>Drought</i>	-
Kebakaran Hutan dan Lahan/ <i>Forest and Land Fires</i>	1
Angin Puyuh/ <i>Puting Beliung</i> / <i>Whirlwind/Tornado</i>	-
Gelombang Pasang Laut/ <i>Sea Tide</i>	-

Catatan/*Note:*

*Data termasuk nagari persiapan/*The data includes the preparatory village*

Sumber Data/*Source:*

Badan Pusat Statistik Kabupaten Pasaman, Pendataan Potensi Desa (Podes) 2020/*BPS-Statistics of Pasaman Regency Village Potential Data Collection (Podes) 2020*

SOSIAL DAN KESEJAHTERAAN RAKYAT

Tabel 2.4.11 Banyaknya Nagari Yang Memiliki Korban Jiwa Akibat Menurut Kejadian Bencana Alam di Kecamatan Bonjol, 2020
Number of Villages Having Casualties Due to Natural Disasters in Bonjol Subdistrict, 2020

Bencana Alam <i>Natural Disasters</i>	Jumlah Nagari <i>Number of Villages</i>
(1)	(2)
Gempa Bumi/ <i>Earthquake</i>	-
Tsunami/ <i>Tsunami</i>	-
Gunung Meletus/ <i>Volcanic Eruption</i>	-
Tanah Longsor/ <i>Landslide</i>	-
Banjir/ <i>Flood</i>	-
Banjir Bandang/ <i>Flash Flood</i>	-
Kekeringan/ <i>Drought</i>	-
Kebakaran Hutan dan Lahan/ <i>Forest and Land Fires</i>	-
Angin Puyuh/Puting Beliung/ <i>Whirlwind/Tornado</i>	-
Gelombang Pasang Laut/ <i>Sea Tide</i>	-

Catatan/Note: *Data termasuk nagari persiapan/*The data includes the preparatory village*
 Sumber Data/Source: Badan Pusat Statistik Kabupaten Pasaman, Pendataan Potensi Desa (Podes) 2020/*BPS-Statistics of Pasaman Regency Village Potential Data Collection (Podes) 2020*

SOCIAL AND WELFARE

Tabel 2.4.12 **Banyaknya Nagari Menurut Keberadaan Fasilitas/Upaya Antisipasi/Mitigasi Bencana Alam di Kecamatan Bonjol, 2020**
Table 2.4.12 **Number of Villages by Existence of Facilities/Anticipations/Mitigation Measures of Natural Disasters in Bonjol Subdistrict, 2020**

Fasilitas/Upaya Antisipasi/Mitigasi Facilities/Anticipations/Mitigation	Jumlah Nagari* Number of Villages*
(1)	(2)
Sistem Peringatan Dini Bencana Alam/ <i>Warning System Early Natural Disasters</i>	-
Sistem Peringatan Dini Khusus/ <i>Warning System Special Early</i>	-
Perlengkapan Keselamatan/ <i>Equipment Safety</i>	-
Rambu - rambu dan Jalur Evakuasi Bencana/ <i>Disaster Evacuation Signs and Paths</i>	-
Pembuatan, Perawatan, atau Normalisasi: Sungai, Kanal, Tanggul, Parit, Drainase, Waduk, Pantai, dll/ <i>Making, Maintenance, or Normalization River, Canal, Embankment, Ditch, Drainage, Reservoir, Beach, etc.</i>	2

Catatan/Note:

*Data termasuk nagari persiapan/*The data includes the preparatory village*

Sumber Data/Source:

Badan Pusat Statistik Kabupaten Pasaman, Pendataan Potensi Desa (Podes) 2020/*BPS-Statistics of Pasaman Regency Village Potential Data Collection (Podes) 2020*

SOSIAL DAN KESEJAHTERAAN RAKYAT

Tabel 2.4.13 Banyaknya Nagari yang Memiliki Fasilitas/Lapangan Olahraga Menurut Jenis Olahraga di Kecamatan Bonjol, 2020
Number of Villages Which Have Facilities/Fields by Types of Sport in Bonjol Subdistrict, 2020

Jenis Olahraga Types of Sport	Jumlah Nagari* Number of Villages*
(1)	(2)
Sepak Bola/Football	3
Bola Voli/Volleyball	3
Bulu Tangkis/Badminton	4
Bola Basket/Basketball	-
Tenis Lapangan/Tennis Court	-
Tenis Meja/Table Tennis	4
Futsal/Futsal	5
Renang/Swimming	-
Bela Diri (pencak silat, karate, dll)/Martial Art (pencak silat, karate, etc.)	1
Bilyard/Billiard	-
Pusat Kebugaran (senam, fitness, aerobik, dll)/ Fitness Center (gymnastics, fitness, aerobics, etc.)	1
Lainnya/etc	-

Catatan/Note: *Data termasuk nagari persiapan/The data includes the preparatory village

Sumber Data/Source: Badan Pusat Statistik Kabupaten Pasaman, Pendataan Potensi Desa (Podes) 2020/BPS-Statistics of Pasaman Regency Village Potential Data Collection (Podes) 2020

SOSIAL DAN KESEJAHTERAAN RAKYAT

Tabel 2.4.14 **Banyaknya Nagari yang Memiliki Kelompok Kegiatan Olahraga Menurut Jenis Olahraga di Kecamatan Bonjol, 2020**
Table *Number of Villages Which Have Sport Activity Groups in Bonjol Subdistrict, 2020*

Jenis Olahraga <i>Types of Sport</i>	Jumlah Nagari* <i>Number of Villages*</i>
(1)	(2)
Sepak Bola/ <i>Football</i>	4
Bola Voli/ <i>Volleyball</i>	3
Bulu Tangkis/ <i>Badminton</i>	2
Bola Basket/ <i>Basketball</i>	-
Tenis Lapangan/ <i>Tennis Court</i>	-
Tenis Meja/ <i>Table Tennis</i>	1
Futsal/ <i>Futsal</i>	4
Renang/ <i>Swimming</i>	-
Bela Diri (pencak silat, karate, dll)/ <i>Martial Art (pencak silat, karate, etc.)</i>	1
Bilyard/ <i>Billiard</i>	-
Pusat Kebugaran (senam, fitness, aerobik, dll)/ <i>Fitness Center (gymnastics, fitness, aerobics, etc.)</i>	3
Lainnya/ <i>etc</i>	-

Catatan/*Note:* *Data termasuk nagari persiapan/*The data includes the preparatory village*
Sumber Data/*Source:* Badan Pusat Statistik Kabupaten Pasaman, Pendataan Potensi Desa (Podes) 2020/*BPS-Statistics of Pasaman Regency Village Potential Data Collection (Podes) 2020*



POPULASI UNGGAS DI KECAMATAN BONJOL 2020

*Poultry Population in Bonjol Subdistrict
2020*

▶ **Ayam
Kampung**
21 765 ekor

*Native Chicken 21 765
heads*

▶ **Ayam
Pedaging**
3 450 heads

Broiler 3 450 heads

▶ **Itik**
3 222 ekor

Duck 3 222 heads

PRODUKSI TANAMAN

SAYURAN

DI KECAMATAN BONJOL 2020

*Production of Vegetables in Bonjol
Subdistrict 2020*



Terung
86,60 ton

Eggplant 86,60 ton



Bawang Merah
13,50 ton

Shallots 13,50 ton



Bayam
28,50 ton

Spinach 28,50 ton



Cabai Besar
43,40 ton

Big Chili 43,40 ton



PRODUKSI IKAN BUDIDAYA

DI KECAMATAN BONJOL 2020

*Production of Vegetables in Bonjol
Subdistrict 2020*

97,84

**ton
ton**

Sumber/Source:

Dinas Pertanian Kabupaten Pasaman/Regional Office of Agriculture of Pasaman Regency
Badan Pusat Statistik Kabupaten Pasaman/BPS-Statistics of Pasaman Regency
Dinas Perikanan Kabupaten Pasaman/Regional Office of Fisheries of Pasaman Regency

PENJELASAN TEKNIS

TECHNICAL NOTES

1. Tanaman sayuran dan buah-buahan semusim

Tanaman sayuran semusim adalah tanaman sumber vitamin, garam mineral dan lain-lain yang dikonsumsi dari bagian tanaman yang berupa daun, bunga, buah, dan umbinya, yang berumur kurang dari satu tahun.

Tanaman buah-buahan semusim adalah tanaman sumber vitamin, garam mineral, dan lain-lain yang dikonsumsi dari bagian tanaman yang berupa buah, berumur kurang dari satu tahun, tidak berbentuk pohon/rumpun tetapi menjalar dan berbatang lunak.

2. Tanaman buah-buahan dan sayuran tahunan. Tanaman buah-buahan tahunan adalah tanaman sumber vitamin, garam mineral, dan lain-lain yang dikonsumsi dari bagian tanaman yang berupa buah dan merupakan tanaman tahunan. Tanaman sayuran tahunan adalah tanaman sumber vitamin, garam mineral, dan lain-lain yang dikonsumsi dari bagian tanaman yang berupa daun dan atau buah yang berumur lebih dari satu tahun.

1. *Seasonal vegetable and fruit plants*

Seasonal vegetable plants are plants which are the sources of vitamin, mineral salt, etc, consumed from the part of the plant in the form of leaf, flower, fruit, and root with the age of less than one year.

Seasonal fruit plants are plants which are the sources of vitamin, mineral salt, etc, consumed from the part of the plant in the form of fruits. These plants are creeps with the age of less than one year.

2. *Annual fruit and vegetable plants*

Annual fruit plants are plants which are the sources of vitamin, contained mineral salt, etc, consumed from the part of plant in the form of fruit and more than one year of age.

Annual vegetable plants are plants which are the sources of vitamin, contained mineral salt, etc, consumed from the part of the plant in the form of vegetable and more than one year of age.

3. Tanaman biofarmaka adalah tanaman yang bermanfaat untuk obat-obatan, kosmetik, dan kesehatan yang dikonsumsi atau digunakan dari bagian-bagian tanaman seperti daun, batang, buah, umbi (rimpang) ataupun akar.
 4. Tanaman hias adalah tanaman yang mempunyai nilai keindahan baik bentuk, warna daun, tajuk maupun bunganya, sering digunakan untuk penghias pekarangan dan lain sebagainya.
 5. Luas panen tanaman hortikultura adalah luas tanaman sayuran, buah-buahan, biofarmaka, dan tanaman hias yang diambil hasilnya/dipanen pada periode pelaporan.
 6. Luas panen untuk tanaman sayuran adalah luas tanaman yang dipanen sekaligus/habis/dibongkar dan luas tanaman yang dipanen berkali-kali (lebih dari satu kali)/belum habis. Tanaman yang dipanen sekaligus/habis/dibongkar adalah tanaman yang sehabis panen langsung dibongkar/dicabut, terdiri dari bawang merah, bawang putih, bawang daun, kentang, kol/kubis, kembang kol, petsai/sawi, wortel, lobak, dan kacang merah.
3. *Medicinal plants are plants which are useful for medicine. It is consumed from part of the plant such as leaf, flower, fruit, tuber, and root.*
 4. *Ornamental plants are plants which have a beauty value, either in shape, colour of leaf or crown of flower, and they are often used as a yard decorator.*
 5. *Harvested area of horticulture is area which vegetable, fruit, medicinal and ornamental plant of crop harvested during the period of report.*
 6. *Harvested area of vegetables is area of entirely plant harvested/demolished and plant harvested several times/undemolished. Plants harvested/demolished are plants harvested are demolished directly, consist of shallot, garlic, spring onion, potato, cabbage, cauliflower, mustard green, carrot, radish, and red bean.*

7. Produksi hortikultura adalah hasil menurut bentuk produk dari setiap tanaman sayuran, buah-buahan, biofarmaka dan tanaman hias yang diambil berdasarkan luas yang dipanen/tanaman yang menghasilkan pada bulan/triwulan laporan.
 8. Bentuk produksi perkebunan adalah; karet kering (karet), daun kering (teh dan tembakau), biji kering (kopi dan coklat), kulit kering (kayu manis dan kina), serat kering (rami), bunga kering (cengkeh), *refined sugar* (tebu dari perkebunan besar), gula mangkok (tebu dari perkebunan rakyat), ekivalen kopra (kopra), biji dan bunga (pala) serta minyak daun (sereh).
 9. Data populasi ternak bersumber dari Dinas Pertanian, sedangkan jumlah pemotongan ternak merupakan hasil Survei Laporan Pemotongan Ternak. Pengumpulan data pemotongan ternak dilakukan secara lengkap setiap triwulan di seluruh Rumah Potong Hewan (RPH) dan Tempat Pemotongan Hewan (TPH) yang ada di Indonesia.
 10. Data statistik perikanan merupakan data sekunder yang bersumber dari Dinas Perikanan. Statistik perikanan dibedakan atas data Perikanan Tangkap dan
7. *Horticulture production is the standard production quantity form of vegetable, fruit, medicinal and ornamental plant based on harvested area/the number of production plants reported monthly/quarterly.*
 8. *Production of estates crops are follows: dry rubber (rubber); dry leaves (tea and tobacco); dry beans (coffee and cocoa); dry bark (cassia vera and cinchona); dry fibre (rosella); dry flowers/buds (cloves); refined sugar (sugar cane from estate); cup sugar (sugar cane from smallholders); copra (copra); seeds and buds (nutmeg); and leaf oil (citronella).*
 9. *Data of domestic livestock population are obtain from the Regional Office of Agriculture, while data on the number of animals slaughtered are based on the quarterly survey conducted by BPS-Statistics Indonesia.*
 10. *Fishery Statistics are secondary data obtained from the Regional Office of Fisheries. Fishery statistics are categorized into capture fisheries and*

AGRICULTURE

Perikanan Budidaya. Perikanan Tangkap diklasifikasikan atas penangkapan ikan di laut dan penangkapan ikan di perairan umum. Perikanan Budidaya diklasifikasikan atas jenis budidaya yaitu budidaya laut, tambak, kolam, karamba, jaring apung, dan sawah.

aquaculture. Capture fisheries are further classified into marine capture fisheries and inland open water capture fisheries. Aquaculture are further classified into several types of culture: marine culture, brackish water pond, fresh water pond, cage, floating net, and fish breeding in paddy fields.

<https://pasamankab.bps.go.id>

3.1 TANAMAN PANGAN/CROPS

Tabel 3.1.1 Luas Tanam dan Luas Panen Tanaman Palawija Menurut Jenis Tanaman di Kecamatan Bonjol (ha), 2016-2020
Table Planted Area and Harvested Area of Secondary Food by Kinds of Plant in Bonjol Subdistrict (ha), 2016-2020

Jenis Tanaman Kinds of Plants	2016	2017	2018	2019	2020
(1)	(2)	(3)	(4)	(5)	(6)
<i>Jagung/Maize</i>					
Luas Tanam/ <i>Planted Area</i>	264,00	84,00	...	416,00	30,00
Luas Panen/ <i>Harvested Area</i>	270,00	72,00	...	474,00	43,00
<i>Ubi Kayu/Cassava</i>					
Luas Tanam/ <i>Planted Area</i>	12,00	8,00	2,00	-	-
Luas Panen/ <i>Harvested Area</i>	9,00	9,00	7,00	2,00	-
<i>Ubi Jalar/Sweet Potatoes</i>					
Luas Tanam/ <i>Planted Area</i>	11,00	6,00	-	-	-
Luas Panen/ <i>Harvested Area</i>	11,00	6,00	3,00	-	-
<i>Kacang Tanah/Peanuts</i>					
Luas Tanam/ <i>Planted Area</i>	15,00	7,00	4,00	1,00	-
Luas Panen/ <i>Harvested Area</i>	18,00	8,00	6,00	2,00	-
<i>Kacang Kedelai/Soybeans</i>					
Luas Tanam/ <i>Planted Area</i>	4,00	-	...	-	-
Luas Panen/ <i>Harvested Area</i>	6,00	1,00	...	-	-
<i>Kacang Hijau/Mung Beans</i>					
Luas Tanam/ <i>Planted Area</i>	-	-	-	-	-
Luas Panen/ <i>Harvested Area</i>	-	-	-	-	-

Sumber Data/*Source*: Dinas Pertanian Kabupaten Pasaman/*Regional Office of Agriculture of Pasaman Regency*

3.2 HORTIKULTURA

Tabel 3.2.1 Luas Panen Tanaman Sayuran Menurut Jenis Tanaman di Kecamatan Bonjol (ha), 2016-2020
Harvested Area of Vegetables by Kinds of Plant in Bonjol Subdistrict (ha), 2016-2020

Jenis Tanaman <i>Kinds of Plants</i>	2016	2017	2018	2019	2020
(1)	(2)	(3)	(4)	(5)	(6)
Bawang Merah/ <i>Shallots</i>	-	-	-	-	1,00
Cabai Besar/ <i>Big Chili</i>	20,00	20,00	15,00	12,00	12,00
Cabai Rawit/ <i>Cayenne Pepper</i>	17,00	16,00	16,00	15,00	9,00
Kentang/ <i>Potato</i>	-	-	-	-	-
Kubis/ <i>Cabbage</i>	-	-	-	-	-
Petsai/ <i>Chinese Cabbage</i>	-	-	-	-	-
Tomat/ <i>Tomato</i>	-	-	-	-	-
Bawang Putih/ <i>Garlic</i>	-	-	-	-	-

Sumber Data/*Source:*

Badan Pusat Statistik Kabupaten Pasaman/*BPS-Statistics of Pasaman Regency*

Tabel 3.2.2 Produksi Tanaman Sayuran Menurut Jenis Tanaman di Kecamatan Bonjol (ton), 2016-2020
Table Production of Vegetables by Kinds of Plant in Bonjol Subdistrict (ton), 2016-2020

Jenis Tanaman Kinds of Plants	2016	2017	2018	2019	2020
(1)	(2)	(3)	(4)	(5)	(6)
Bawang Merah/Shallots	-	-	-	-	13,50
Cabai Besar/Big Chili	66,40	55,00	48,50	43,40	43,40
Cabai Rawit/Cayenne Pepper	54,20	51,90	54,00	43,80	34,70
Kentang/Potato	-	-	-	-	-
Kubis/Cabbage	-	-	-	-	-
Petsai/Chinese Cabbage	-	-	-	-	-
Tomat/Tomato	-	-	-	-	-
Bawang Putih/Garlic	-	-	-	-	-

Sumber Data/Source: Badan Pusat Statistik Kabupaten Pasaman/BPS-Statistics of Pasaman Regency

Tabel 3.2.3 Luas Panen Tanaman Sayuran dan Buah-buahan Semusim Menurut Jenis Tanaman di Kecamatan Bonjol (ha), 2016-2020
Table Harvested Area of Seasonal Vegetables and Fruits by Kinds of Plant in Bonjol Subdistrict (ha), 2016-2020

Jenis Tanaman Kinds of Plants	2016	2017	2018	2019	2020
(1)	(2)	(3)	(4)	(5)	(6)
Kacang Panjang/Long Beans	13,00	13,00	12,00	12,00	8,00
Cabai Besar/Big Chili	20,00	20,00	15,00	12,00	12,00
Cabai Rawit/Cayenne Pepper	17,00	16,00	16,00	15,00	9,00
Terung/Eggplant	16,00	14,00	13,00	13,00	9,00
Buncis/Bean	12,00	11,00	13,00	12,00	6,00
Ketimun/Cucumber	15,00	11,00	15,00	12,00	6,00
Kangkung/Water Spinach	12,00	12,00	11,00	12,00	7,00
Bayam/Spinach	12,00	12,00	11,00	12,00	7,00

Sumber Data/Source: Badan Pusat Statistik Kabupaten Pasaman/BPS-Statistics of Pasaman Regency

Tabel 3.2.4 Produksi Tanaman Sayuran dan Buah-buahan Semusim Menurut Jenis Tanaman (ton) di Kecamatan Bonjol, 2016-2020
Table *Production of Seasonal Vegetables and Fruits by Kinds of Plant in Bonjol Subdistrict (ton), 2016-2020*

Jenis Tanaman Kinds of Plants	2016	2017	2018	2019	2020
(1)	(2)	(3)	(4)	(5)	(6)
Kacang Panjang/ <i>Long Beans</i>	43,70	38,10	34,20	35,50	21,40
Cabai Besar/ <i>Big Chili</i>	66,40	55,00	48,50	43,40	43,40
Cabai Rawit/ <i>Cayenne Pepper</i>	54,20	51,90	54,00	43,80	34,70
Terung/ <i>Eggplant</i>	149,60	134,70	132,90	136,20	86,60
Buncis/ <i>Bean</i>	57,80	54,20	60,00	52,70	27,10
Ketimun/ <i>Cucumber</i>	108,60	87,70	116,10	91,10	44,60
Kangkung/ <i>Water Spinach</i>	59,60	58,70	52,40	54,60	31,50
Bayam/ <i>Spinach</i>	55,30	56,50	53,10	49,80	28,50

Sumber Data/Source: Badan Pusat Statistik Kabupaten Pasaman/BPS-Statistics of Pasaman Regency

AGRICULTURE

Tabel 3.2.5 Luas Panen Tanaman Biofarmaka Menurut Jenis Tanaman di Kecamatan Bonjol (m²), 2016-2020
Table
Harvested Area of Medicinal Plants by Kinds of Plant in Bonjol Subdistrict (m²), 2016-2020

Jenis Tanaman <i>Kinds of Plants</i>	2016	2017	2018	2019	2020
(1)	(2)	(3)	(4)	(5)	(6)
Jahe/ <i>Ginger</i>	-	-	1,00	2,00	-
Laos/ <i>Lengkuas/Galangal</i>	-	-	1,00	3,00	-
Kencur/ <i>East Indian Galangal</i>	-	-	-	-	-
Kunyit/ <i>Turmeric</i>	-	-	1,00	2,00	-

Sumber Data/*Source*: Badan Pusat Statistik Kabupaten Pasaman/*BPS-Statistics of Pasaman Regency*

Tabel 3.2.6 Produksi Tanaman Biofarmaka Menurut Jenis Tanaman di Kecamatan Bonjol (kg), 2016-2020
Table Production of Medicinal Plants by Kinds of Plant in Bonjol Subdistrict (kg), 2016-2020

Jenis Tanaman <i>Kinds of Plants</i>	2016	2017	2018	2019	2020
(1)	(2)	(3)	(4)	(5)	(6)
Jahe/ <i>Ginger</i>	-	-	2,00	4,00	-
Laos/Lengkuas/ <i>Galangal</i>	-	-	2,00	8,00	-
Kencur/ <i>East Indian Galangal</i>	-	-	-	-	-
Kunyit/ <i>Turmeric</i>	-	-	1,00	4,00	-

Sumber Data/Source: Badan Pusat Statistik Kabupaten Pasaman/BPS-Statistics of Pasaman Regency

AGRICULTURE

Tabel 3.2.7 Luas Panen Tanaman Hias Menurut Jenis Tanaman di Kecamatan Bonjol (m²), 2016-2020
Table *Harvested Area of Ornamental Plants by Kinds of Plant in Bonjol Subdistrict (m²), 2016-2020*

Jenis Tanaman <i>Kinds of Plants</i>	2016	2017	2018	2019	2020
(1)	(2)	(3)	(4)	(5)	(6)
Anggrek/ <i>Orchid</i>	-	-	-	1,00	-
Krisan/ <i>Chrysantemum</i>	-	-	-	-	-
Mawar/ <i>Rose</i>	-	-	-	10,00	-
Sedap Malam/ <i>Tuberose</i>	-	-	-	-	-

Sumber Data/Source: Badan Pusat Statistik Kabupaten Pasaman/BPS-Statistics of Pasaman Regency

Tabel 3.2.8 Produksi Tanaman Hias Menurut Jenis Tanaman (tangkai) di Kecamatan Bonjol (tangkai), 2016-2020
Table *Production of Ornamental Plants by Kinds of Plant in Bonjol Subdistrict (stalks), 2016-2020*

Jenis Tanaman <i>Kinds of Plants</i>	2016	2017	2018	2019	2020
(1)	(2)	(3)	(4)	(5)	(6)
Anggrek/ <i>Orchid</i>	-	-	-	5,00	-
Krisan/ <i>Chrysantemum</i>	-	-	-	-	-
Mawar/ <i>Rose</i>	-	-	-	90,00	-
Sedap Malam/ <i>Tuberose</i>	-	-	-	-	-

Sumber Data/*Source*: Badan Pusat Statistik Kabupaten Pasaman/BPS-Statistics of Pasaman Regency

Tabel 3.2.9 Produksi Buah-Buahan dan Sayuran Tahunan Menurut Jenis Tanaman di Kecamatan Bonjol (ton), 2016-2020
Table Production of Annual Fruits and Vegetables by Kinds of Plant in Bonjol Subdistrict (ton), 2016-2020

Jenis Tanaman Kinds of Plants	2016	2017	2018	2019	2020
(1)	(2)	(3)	(4)	(5)	(6)
Alpukat/Avocado	10,00	8,00	6,50	4,10	7,20
Belimbing/Starfruit	6,00	4,00	7,10	19,00	6,00
Duku/Langsat/Duku/Langsat	-	-	-	-	9,60
Durian/Durian	35,80	15,00	-	-	252,50
Jambu Biji/Guava	37,00	27,00	40,00	46,30	15,00
Jambu Air/Water Apple	10,00	12,50	10,00	19,00	18,20
Jeruk Siam/Keprok/ Siamese Oranges/ Tangerines	-	-	-	-	-
Mangga/Mango	38,80	30,00	4,20	44,30	41,20
Manggis/Mangosteen	-	10,00	-	-	145,80
Nangka/Cempedak/Jackfruit/ Cempedak	80,00	59,00	78,00	135,40	49,40
Nenas/Pineapple	2,40	1,80	1,20	1,40	1,10
Pepaya/Papaya	17,10	17,00	18,00	35,00	15,70
Pisang/Banana	20,00	62,00	250,00	343,00	299,70
Rambutan/Rambutan	63,40	33,00	-	-	84,50
Sawo/Sawo	25,80	16,40	19,50	45,80	22,50
Melinjo/Melinjo	-	-	-	-	-
Petai/Petai	-	-	-	-	-
Jengkol/Jengkol	-	-	-	12,50	3,80

Sumber Data/Source: Badan Pusat Statistik Kabupaten Pasaman/BPS-Statistics of Pasaman Regency

3.3 Perkebunan

Tabel 3.3.1 Luas Area Tanaman Perkebunan Menurut Jenis Tanaman di Kecamatan Bonjol (ha), 2016-2020
Table Planted Area of Estate Crops by Kinds of Plant in Bonjol Subdistrict (ha), 2016-2020

Jenis Tanaman <i>Kinds of Plants</i>	2016	2017	2018	2019	2020
(1)	(2)	(3)	(4)	(5)	(6)
Kelapa Sawit/ <i>Oil Palm</i>	28,50	13,50	13,50	31,50	13,50
Kelapa/ <i>Coconut</i>	60,00	60,00	60,00	60,00	60,00
Karet/ <i>Rubber</i>	3 162,00	3 162,00	3 147,00	3 127,00	3 102,00
Kopi/ <i>Coffee</i>	-	20,00	20,00	20,00	18,00
Kakao/ <i>Cocoa</i>	2 273,00	2 268,00	2 268,00	2 238,00	2 223,00
Tebu/ <i>Sugar Cane</i>	-	-	-	-	-
Teh/ <i>Tea</i>	...	-	-	-	-
Tembakau/ <i>Tobacco</i>	-	-	-	-	-

Sumber Data/Source: Dinas Pertanian Kabupaten Pasaman/*Regional Office of Agriculture of Pasaman Regency*

AGRICULTURE

Tabel 3.3.2 **Produksi Tanaman Perkebunan Menurut Jenis Tanaman di Kecamatan Bonjol (ton), 2016-2020**
Table **Production of Estate Crops by Kinds of Plant in Bonjol Subdistrict (ton), 2016-2020**

Jenis Tanaman <i>Kinds of Plants</i>	2016	2017	2018	2019	2020
(1)	(2)	(3)	(4)	(5)	(6)
Kelapa Sawit/ <i>Oil Palm</i>	190,35	72,00	72,00	24,00	24,00
Kelapa/ <i>Coconut</i>	169,50	169,50	169,50	45,20	45,20
Karet/ <i>Rubber</i>	2 465,80	1 535,50	1 528,30	2 714,40	2 705,40
Kopi/ <i>Coffee</i>	-	4,00	4,00	9,00	8,10
Kakao/ <i>Cocoa</i>	1 345,75	1 342,25	1 342,25	1 400,60	1 400,00
Tebu/ <i>Sugar Cane</i>	-	-	-	-	-
Teh/ <i>Tea</i>	...	-	-	-	-
Tembakau/ <i>Tobacco</i>	-	-	-	-	-

Sumber Data/*Source*: Dinas Pertanian Kabupaten Pasaman/*Regional Office of Agriculture of Pasaman Regency*

3.4 Peternakan

Tabel 3.4.1 Populasi Unggas Menurut Jenis Unggas di Kecamatan Bonjol (ekor), 2016-2020

Poultry Population by Kinds of Poultry in Bonjol Subdistrict (heads), 2016-2020

Jenis Unggas <i>Kinds of Poultry</i>	2016	2017	2018	2019	2020
(1)	(2)	(3)	(4)	(5)	(6)
Ayam Kampung/ <i>Native Chicken</i>	17 950	5 035	8 000	21 960	21 765
Ayam Petelur/ <i>Layer</i>	-	-	-	-	-
Ayam Pedaging/ <i>Broiler</i>	11 000	1 890	4 000	27 000	3 450
Itik/ <i>Duck</i>	13 050	1 775	1 200	8 134	8 222

Sumber Data/Source: Dinas Pertanian Kabupaten Pasaman/*Regional Office of Agriculture of Pasaman Regency*

AGRICULTURE

Tabel 3.4.2 **Produksi Telur Unggas Menurut Jenis Unggas di Kecamatan Bonjol (butir), 2016-2020**
Production of Poultry Eggs by Kinds of Poultry in Bonjol Subdistrict (pieces), 2016-2020

Jenis Unggas <i>Kinds of Poultry</i>	2016	2017	2018	2019	2020
(1)	(2)	(3)	(4)	(5)	(6)
Ayam Kampung	224 954	63 097	100 258	272 765	272 765
Ayam Petelur	-	-	-	-	-
Ayam Pedaging	-	-	-	-	-
Itik	973 649	132 394	89 531	613 436	613 436

Sumber Data/Source: Dinas Pertanian Kabupaten Pasaman/Regional Office of Agriculture of Pasaman Regency

Tabel 3.4.3 Jumlah Usaha Unggas Menurut Jenis Unggas di Kecamatan Bonjol (unit), 2016-2020
Table Number of Poultry Businesses by Kinds of Poultry in Bonjol Subdistrict (unit), 2016-2020

Jenis Unggas Kinds of Poultry	2016	2017	2018	2019	2020
(1)	(2)	(3)	(4)	(5)	(6)
Ayam Kampung	1 202	1 202	967	8 750	8 700
Ayam Petelur	-	-	-	-	-
Ayam Pedaging	7	3	3	7	8
Itik	889	652	300	1 249	1 250

Sumber Data/Source: Dinas Pertanian Kabupaten Pasaman/Regional Office of Agriculture of Pasaman Regency

AGRICULTURE

3.5 Perikanan

Tabel 3.5.1 Luas Area dan Produksi Benih Ikan di Kecamatan Bonjol, 2016-2020
Table Area and Production of Fish Seeds in Bonjol Subdistrict, 2016-2020

Tahun Years	Pembenihan Hatcheries	
	Luas (ha) Area (ha)	Produksi (ekor) Production (fish)
(1)	(2)	(3)
2016	77,0	-
2017	77,0	1 850 000
2018	78,0	1 967 000
2019	78,00	3 432 000
2020	96,00	3 468 400

Sumber Data/Source: Dinas Perikanan Kabupaten Pasaman/Regional Office of Fisheries of Pasaman Regency

Tabel 3.5.2 Luas Area Pemeliharaan Ikan di Kecamatan Bonjol (ha), 2016-2020
Table Area of Piscicultures in Bonjol Subdistrict (ha), 2016-2020

Tahun Years	Kolam Pond	Sawah Field	Jumlah Total
(1)	(2)	(3)	(4)
2016	384,00	10,00	394,00
2017	384,00	5,00	389,00
2018	387,00	6,50	393,50
2019	391,00	8,00	399,00
2020	393,00	4,00	397,00

Sumber Data/Source: Dinas Perikanan Kabupaten Pasaman/Regional Office of Fisheries of Pasaman Regency

Tabel 3.5.3 Jumlah Alat Penangkapan Ikan di Perairan Umum Menurut Jenisnya di Kecamatan Bonjol, 2016-2020
Number of Fishing Gears in Open Waters by Kinds in Bonjol Subdistrict, 2016-2020

Jenis Alat Penangkapan Ikan <i>Kinds of Fishing Gears</i>	2016	2017	2018	2019	2020
(1)	(2)	(3)	(4)	(5)	(6)
Jaring Insang/ <i>Lost Seine</i>	-	-	-	-	-
Jaring Insang Tetap/ <i>Fixed Seine</i>	16	17	17	17	17
Anco/ <i>Portable Lift Net</i>	5	7	-	-	-
Serok/ <i>Tangguk/Scoop</i>	30	30	46	46	47
Pancing/ <i>Fishing Rod</i>	120	120	167	167	172
Bubu/ <i>Portable Lift Trap</i>	65	65	52	52	61
Tombak/ <i>Spear</i>	67	73

Sumber Data/*Source*: Dinas Perikanan Kabupaten Pasaman/*Regional Office of Fisheries of Pasaman Regency*

Tabel 3.5.4 **Produksi Ikan Budidaya di Kecamatan Bonjol (ton), 2016-2020**
Table **Production of Fish Farming in Bonjol Subdistrict (ton), 2016-2020**

Tahun Years	Kolam Pond	Sawah Field	Jumlah Total
(1)	(2)	(3)	(4)
2016	146,56	1,58	148,14
2017	93,18	1,80	94,98
2018	91,36	2,00	93,36
2019	94,62	1,50	96,12
2020	96,32	1,52	97,84

Sumber Data/Source: Dinas Perikanan Kabupaten Pasaman/Regional Office of Fisheries of Pasaman Regency

AGRICULTURE

Tabel 3.5.5 Produksi Ikan Tangkap di Perairan Umum di Kecamatan Bonjol (ton), 2016-2020
Table *Production of Catch Fish in Open Waters in Bonjol Subdistrict, 2016-2020*

Tahun Years	Sungai River	Rawa Swamp	Danau Lake	Jumlah Total
(1)	(2)	(3)	(4)	(5)
2016	241,79	-	-	241,79
2017	241,79	-	-	241,79
2018	143,22	-	-	143,22
2019	162,10	-	-	162,10
2020	181,18	-	-	181,18

Sumber Data/Source: Dinas Perikanan Kabupaten Pasaman/Regional Office of Fisheries of Pasaman Regency

KOMUNIKASI

Kondisi Sinyal Telepon Seluler di Sebagian Besar Wilayah Desa/Kelurahan di Kecamatan Bonjol Tahun 2020

Signal Condition Cellular Phones in Most Village/Kelurahan Areas in Bonjol Subdistrict, 2020

Sinyal Sangat Kuat
Very Strong Signal

20 %

1 nagari/village

Sinyal Kuat
Strong Signal

80 %

4 nagari/villages



Jumlah Menara Telepon Seluler (BTS) Tahun 2020

Number of Cellular Telephone Towers (BTS) 2020

Koto Kaciak



Ganggo Hilia



Persiapan Koto Kaciak Barat

Tidak ada

Limo Koto



Ganggo Mudiak



TRANSPORTASI



Panjang Jalan (km) Kabupaten Menurut Kondisi Jalan di Kecamatan Bonjol, 2020

Length of Regency Roads (km) by Condition of Roads in Bonjol Subdistrict, 2020

Baik/Good 37,53

Rusak dan Rusak Berat/Damage and Severely Damage

21,38

Sedang/Moderate 13,04

PERDAGANGAN

Nama Pasar dan Hari Pasar di Kecamatan Bonjol, 2020

Names of Market and Market Day in Bonjol Subdistrict, 2020

Pasar Ganggo Hilia

Senin

Pasar Ganggo Mudiak

Rabu

Pasar Kumpulan

Kamis

Sumber/Source:

Badan Pusat Statistik Kabupaten Pasaman, Pendataan Potensi Desa (Podes) 2020/BPS-Statistics of Pasaman Regency Village Potential Data Collection (Podes) 2020

Dinas Pekerjaan Umum dan Tata Ruang Kabupaten Pasaman/Regional Office of Public Works and Spatial Planning of Pasaman Regency

Pemerintah Kecamatan Bonjol/Government of Bonjol Subdistrict

KOMUNIKASI, TRANSPORTASI, DAN PERDAGANGAN

PENJELASAN TEKNIS

1. Telekomunikasi adalah setiap pemancaran, pengiriman dan atau penerimaan dari setiap informasi dalam bentuk tanda-tanda, isyarat, tulisan, gambar, suara dan bunyi melalui sistem kawat, optik, radio atau sistem elektromagnetik lainnya.
2. Jaringan telekomunikasi adalah rangkaian perangkat telekomunikasi dan kelengkapannya yang digunakan dalam bertelekomunikasi.
3. Internet adalah sebuah jaringan komputer publik di seluruh dunia. Internet menyediakan akses ke sejumlah layanan komunikasi termasuk World Wide Web dan membawa email, berita, hiburan dan file data.
4. Kantor Pos adalah tempat pemberi pelayanan komunikasi tertulis dan atau surat elektronik, layanan paket, layanan logistik, layanan transaksi keuangan, dan layanan keagenan pos untuk kepentingan umum. Rumah pos berfungsi sama seperti kantor pos dan kantor pos pembantu, bedanya rumah pos biasanya terletak di daerah terpencil.

TECHNICAL NOTES

1. *Telecommunication includes every transmitting, delivering and or receiving from every information of marking, signal, article, picture, sound and voice through strand of wire system, optic, radio or other electromagnetic system.*
2. *Telecommunication network is peripheral network of telecommunication and its equipment used in the means of telecommunication.*
3. *The internet is a worldwide public computer network. It provides access to a number of communication services including the World Wide Web and carries e-mail, news, entertainment and data files.*
4. *Post Office is a service provider facility of written communication and or electronic mail, parcel service, logistics services, financial transaction services, and postal services to the public. Postal house has the same function as the post office and subsidiary of post office, the difference is that postal house is usually located in remote areas.*

COMMUNICATION, TRANSPORTATION, AND TRADE

5. Usaha penyediaan akomodasi adalah usaha yang menyediakan pelayanan penginapan yang dapat dilengkapi dengan pelayanan pariwisata lainnya. Usaha penyediaan akomodasi dapat berupa hotel, vila, pondok wisata, bumi perkemahan, persinggahan karavan, dan akomodasi lainnya yang digunakan untuk tujuan pariwisata.
 6. Hotel adalah penyediaan akomodasi secara harian berupa kamar-kamar di dalam satu bangunan yang dapat dilengkapi dengan jasa pelayanan makan dan minum, kegiatan hiburan dan atau fasilitas lainnya. Hotel terdiri dari hotel berbintang dan hotel non-bintang.
5. *The business of providing accommodation is a business that provides specialty services that can be equipped with other tourism services. It includes hotel, villa, cottage, camping, caravan stop, and other accommodation that are used for tourism purposes.*
 6. *Hotel is a daily supply of accommodation rooms within a building which can be equipped with eating and drinking services, entertainment activities and/ or other facilities. Hotel consists of a classified hotel and a non-classified hotel.*

4.1 KOMUNIKASI/COMMUNICATION

Tabel 4.1.1 Jumlah Menara dan Operator Layanan Komunikasi Telepon Seluler Serta Kondisi Sinyal Telepon Seluler Menurut Nagari di Kecamatan Bonjol, 2020
Number of Towers and Cellular Telephone Communication Service Operators and Cellular Signal Conditions by Village in Bonjol Subdistrict, 2020

Nagari Village	Jumlah Menara Telepon Seluler (BTS) <i>Number of Cellular Telephone Towers (BTS)</i>	Jumlah Operator Layanan Komunikasi Telepon Seluler Yang Menjangkau di Desa/Kelurahan <i>Number of Cellular Communication Service Operators Reaching in Village/Kelurahan</i>	Kondisi Sinyal Telepon Seluler di Sebagian Besar Wilayah Desa/Kelurahan <i>Signal Condition Cellular Phones in Most Village/Kelurahan Areas</i>
(1)	(2)	(3)	(4)
1 Koto Kaciak	2	4	Sinyal Kuat
2 Limo Koto	4	3	Sinyal Sangat Kuat
3 Ganggo Hilia	3	3	Sinyal Kuat
4 Ganggo Mudiak	1	2	Sinyal Kuat
5 Persiapan Koto Kaciak Barat*	-	3	Sinyal Kuat

Catatan/Note:

*Data termasuk nagari persiapan/*The data includes the preparatory village*

Sumber Data/Source:

Badan Pusat Statistik Kabupaten Pasaman, Pendataan Potensi Desa (Podes) 2020/*BPS-Statistics of Pasaman Regency Village Potential Data Collection (Podes) 2020*

COMMUNICATION, TRANSPORTATION, AND TRADE

Tabel 4.1.2 Keberadaan Kantor Pos/Pos Pembantu/Rumah Pos dan Perusahaan/Agen Jasa Ekspedisi Swasta Menurut Nagari di Kecamatan Bonjol, 2020
Existence of Post Offices/Supporting Post Offices/Post Houses and Companies/Private Expedition Service Agents by Village in Bonjol Subdistrict, 2020

	Nagari Village	Kantor Pos/Pos Pembantu/ Rumah Pos Post Offices/Supporting Post Of- fices/Post Houses and Companies	Perusahaan/Agen Jasa Ekspedisi Swasta Private Expedition Service Agents
	(1)	(2)	(3)
1	Koto Kaciak	Tidak Ada	Tidak Ada
2	Limo Koto	Tidak Ada	Tidak Ada
3	Ganggo Hilia	Tidak Ada	Beroperasi
4	Ganggo Mudiak	Beroperasi	Tidak Ada
5	Persiapan Koto Kaciak Barat*	Tidak Ada	Tidak Ada

Catatan/Note: *Data termasuk nagari persiapan/The data includes the preparatory village

Sumber Data/Source: Badan Pusat Statistik Kabupaten Pasaman, Pendataan Potensi Desa (Podes) 2020/BPS-Statistics of Pasaman Regency Village Potential Data Collection (Podes) 2020

4.2 TRANSPORTASI/TRANSPORTATION

Table 4.2.1 Sarana Transportasi Antar Nagari Menurut Nagari di Kecamatan Bonjol, 2020
Village Transportation Facilities by Village in Bonjol Subdistrict, 2020

	Nagari Village	Jenis Transportasi Transportation Type	Keberadaan Angkutan Umum Existence of Public Transportation
	(1)	(2)	(3)
1	Koto Kaciak	Darat	Ada, dengan trayek tetap
2	Limo Koto	Darat	Ada, dengan trayek tetap
3	Ganggo Hilia	Darat	Ada, dengan trayek tetap
4	Ganggo Mudiak	Darat	Ada, tanpa trayek tetap
5	Persiapan Koto Kaciak Barat*	Darat	Ada, dengan trayek tetap

Catatan/Note:

*Data termasuk nagari persiapan/*The data includes the preparatory village*

Sumber Data/Source:

Badan Pusat Statistik Kabupaten Pasaman, Pendataan Potensi Desa (Podes) 2020/*BPS-Statistics of Pasaman Regency Village Potential Data Collection (Podes) 2020*

COMMUNICATION, TRANSPORTATION, AND TRADE

Tabel 4.2.2 Panjang Jalan Kabupaten Menurut Kondisi Jalan di Kecamatan Bonjol (km), 2016-2020
Table Length of Regency Roads by Condition of Roads in Bonjol Subdistrict (km), 2016-2020

Tahun Years	Jalan Kabupaten Regency Roads (km)		
	Baik Good	Sedang Moderate	Rusak dan Rusak Berat Damage and Severe- ly Damage
(1)	(2)	(3)	(4)
2016	34,22	5,77	16,31
2017	35,88	13,29	22,78
2018	36,88	13,29	21,78
2019	36,88	13,29	21,78
2020	37,53	13,04	21,38

Sumber Data/Source: Dinas Pekerjaan Umum dan Tata Ruang Kabupaten Pasaman/ Regional Office of Public Works and Spatial Planning of Pasaman Regency

KOMUNIKASI, TRANSPORTASI, DAN PERDAGANGAN

Tabel 4.2.3 Kondisi Jalan Darat Antar Nagari Menurut Nagari di Kecamatan Bonjol, 2020
Conditions of Inter-Village Land Roads by Village in Bonjol Subdistrict, 2020

	Nagari Village	Jenis Permukaan Jalan Road Surface Type	Dapat Dilalui Kendaraan Bermotor Roda 4 atau Lebih Can be passed by 4 or More Wheels Motorized Vehicles
	(1)	(2)	(3)
1	Koto Kaciak	Aspal/Beton	Sepanjang Tahun
2	Limo Koto	Aspal/Beton	Sepanjang Tahun
3	Ganggo Hilia	Aspal/Beton	Sepanjang Tahun
4	Ganggo Mudiak	Aspal/Beton	Sepanjang Tahun
5	Persiapan Koto Kaciak Barat*	Aspal/Beton	Sepanjang Tahun

Catatan/Note:

*Data termasuk nagari persiapan/The data includes the preparatory village

Sumber Data/Source:

Badan Pusat Statistik Kabupaten Pasaman, Pendataan Potensi Desa (Podes) 2020/BPS-Statistics of Pasaman Regency Village Potential Data Collection (Podes) 2020

4.3 PERDAGANGAN/TRADE

Tabel 4.3.1 Nama Pasar dan Hari Pasar di Kecamatan Bonjol, 2020
Table Names of Market and Market Day in Bonjol Subdistrict, 2020

	Nama Pasar <i>Names of Market</i>	Nagari/Jorong <i>Village/Jorong</i>	Hari Pasar <i>Market Day</i>
	(1)	(2)	(3)
1	Pasar Ganggo Hilia	Ganggo Hilia	Senin
2	Pasar Ganggo Mudiak	Ganggo Mudiak	Rabu
3	Pasar Kumpulan	Koto Kaciak	Kamis

Sumber Data/Source: Pemerintah Kecamatan Bonjol/Government of Bonjol Subdistrict

KOMUNIKASI, TRANSPORTASI, DAN PERDAGANGAN

Tabel 4.3.2 Banyaknya Nagari Menurut Sarana dan Prasarana Ekonomi Nagari dan Jenisnya di Kecamatan Bonjol, 2020
Number of Villages by Types of Economic Facilities and Infrastructure in Bonjol Subdistrict, 2020

Sarana dan Prasarana Ekonomi <i>Economic Facilities and Infrastructure</i>	Jumlah Nagari* <i>Number of Villages*</i>
(1)	(2)
Kelompok Pertokoan/ <i>Group Shops</i>	1
Pasar dengan Bangunan Permanen/ <i>Market with Building Permanent</i>	1
Pasar dengan Bangunan Semi Permanen/ <i>Market with Semi Permanent Buildings</i>	3
Pasar Tanpa Bangunan/ <i>Market Without Building</i>	0
Minimarket/ <i>Swalayan/Super Market</i>	1
Toko/Warung Kelontong/ <i>Shop/Warung Grocery</i>	5
Restoran/Rumah Makan/ <i>Restaurant</i>	3
Warung/Kedai Makan/ <i>Shop/Food Shop</i>	4
Hotel/ <i>Hotel</i>	1
Hostel/Motel/Losmen/Wisma/ <i>Hostel/Motel/Inn/Guesthouse</i>	3

Catatan/*Note*: *Data termasuk nagari persiapan/*The data includes the preparatory village*

Sumber Data/*Source*: Badan Pusat Statistik Kabupaten Pasaman, Pendataan Potensi Desa (Podes) 2020/*BPS-Statistics of Pasaman Regency Village Potential Data Collection (Podes) 2020*

COMMUNICATION, TRANSPORTATION, AND TRADE

Tabel 4.3.3 Jumlah Penginapan, Kamar, dan Tempat Tidur di Kecamatan Bonjol, 2016-2020
Table Number of Accomodations, Rooms, and Beds in Bonjol Subdistrict, 2016-2020

Tahun Years	Tempat Tidur Bed	Kamar Room	Jumlah Total
(1)	(2)	(3)	(4)
2016	-	-	-
2017	-	-	-
2018	-	-	-
2019	-	-	-
2020	21	11	2

Sumber Data/Source: Badan Pusat Statistik Kabupaten Pasaman/BPS-Statistics of Pasaman Regency

Tabel 4.3.4 Banyaknya Nagari Menurut Sarana Lembaga Keuangan Yang Beroperasi dan Jenisnya di Kecamatan Bonjol, 2020
Number of Villages by Types of Financial Institution Facilities Operating in Bonjol Subdistrict, 2020

Sarana Lembaga Keuangan <i>Financial Institution Facilities</i>	Jumlah Nagari* <i>Number of Villages*</i>
(1)	(2)
Bank Umum Pemerintahan/ <i>Government Commercial Bank</i>	1
Bank Umum Swasta/ <i>Private Commercial Bank</i>	0
Bank Perkreditan Rakyat/ <i>Rural Bank</i>	1

Catatan/Note:

*Data termasuk nagari persiapan/*The data includes the preparatory village*

Sumber Data/Source:

Badan Pusat Statistik Kabupaten Pasaman, Pendataan Potensi Desa (Podes) 2020/*BPS-Statistics of Pasaman Regency Village Potential Data Collection (Podes) 2020*

COMMUNICATION, TRANSPORTATION, AND TRADE

Tabel 4.3.5 **Banyaknya Nagari Menurut Jenis Koperasi yang Masih Aktif di Kecamatan Bonjol, 2020**
Number of Villages by Types of Cooperative Still Active in Bonjol Subdistrict, 2020

Jenis Koperasi <i>Types of Cooperative</i>	Jumlah Nagari* <i>Number of Villages*</i>
(1)	(2)
Koperasi Unit Desa (KUD)/ <i>Village Unit Cooperatives (KUD)</i>	2
Koperasi Industri Kecil dan Kerajinan Rakyat (Kopinkra)/ <i>Cooperative Small Industry and Folk Crafts</i>	0
Koperasi Simpan Pinjam (Kospin)/ <i>Cooperative Savings and Loan</i>	1
Koperasi Lainnya/ <i>Cooperative Others</i>	1

Catatan/Note:

*Data termasuk nagari persiapan/*The data includes the preparatory village*

Sumber Data/Source:

Badan Pusat Statistik Kabupaten Pasaman, Pendataan Potensi Desa (Podes) 2020/*BPS-Statistics of Pasaman Regency Village Potential Data Collection (Podes) 2020*

KOMUNIKASI, TRANSPORTASI, DAN PERDAGANGAN

Tabel 4.3.6 Jumlah Koperasi dan Koperasi Unit Desa (KUD) di Kecamatan Bonjol, 2016-2020
Table *Number of Cooperatives and Village Unit Cooperatives in Bonjol Subdistrict, 2016-2020*

Jenis Koperasi <i>Types of Cooperative</i>	2016	2017	2018	2019	2020
(1)	(2)	(3)	(4)	(5)	(6)
KUD/Village Unit Cooperative	2	2	2	2	2
KUD Mina/"Mina" Village Unit Cooperative	-	-	-	-	-
Koperasi Non KUD/Non KUD Cooperative					
Koperasi Pegawai Negeri (KPN)/Civil Servant Cooperative	3	3	3	3	3
Koperasi Pensiun/Retired Cooperative	-	-	-	-	-
Primer Koperasi Polisi (Primkoppol)/Police Cooperative	-	-	-	-	-
Primer Koperasi Angkatan Darat (Primkopad)/Army Cooperative	-	-	-	-	-
Koperasi Wanita/Women Cooperative	-	-	-	-	-
Koperasi Petani/Koperasi Serba Usaha/Koperasi Perkebunan/Farmer Cooperative/All-Round Cooperative/Plantation Cooperative	7	4	3	7	7
Koperasi Pondok Pesantren Baitul Mal wa Tamwil (Kopontren BMT)/"Pondok Pesantren Baitul Mal wa Tamwil" Cooperative	-	1	1	1	1

Lanjutan Tabel/Continued Table 4.3.6

Jenis Koperasi <i>Types of Cooperative</i>	2016	2017	2018	2019	2020
(1)	(2)	(3)	(4)	(5)	(6)
Koperasi Karyawan/ <i>Employee Cooperative</i>	-	-	-	-	-
Koperasi Angkutan/ <i>Transport Cooperative</i>	-	-	-	-	-
Koperasi Pasar/ <i>Market Cooperative</i>	1	1	1	1	1
Koperasi Simpan Pinjam/ <i>Credits Cooperative</i>	1	1	1	1	1
Primer Koperasi Veteran Republik Indonesia (Primk-overi)/ <i>Primary Cooperative of Veterans of The Republic of Indonesia</i>	-	-	-	-	-
Koperasi Wredhatama/ <i>Wredhatama Cooperative</i>	1	-	-	1	1
Koperasi Profesi/ <i>Profession Cooperative</i>	-	-	-	-	-
Koperasi Nagari/ <i>Nagari Cooperative</i>	-	-	-	-	-
Koperasi Perikanan/ <i>Fisheries Cooperative</i>	-	-	-	-	-
Koperasi Lainnya/ <i>Other Cooperatives</i>	-	-	1	-	-

Sumber Data/*Source*: Dinas Koperasi dan Usaha Kecil Menengah (UKM) Kabupaten Pasaman/*Regional Office of Cooperatives and Medium-Sized Enterprises of Pasaman Regency*

Tabel 4.3.7 Nama Objek Wisata di Kecamatan Bonjol, 2020
Table Names of Tourist Attraction in Bonjol Subdistrict, 2020

	Nama Objek Wisata <i>Names of Tourist Attraction</i>	Lokasi/Nagari <i>Location/Village</i>
	(1)	(2)
1	Equator	Ganggo Mudiak
2	Ikan Banyak	Batu Ampa Koto Kaciak

Sumber Data/Source: Pemerintah Kecamatan Bonjol/Government of Bonjol Subdistrict

COMMUNICATION, TRANSPORTATION, AND TRADE

Tabel 4.3.8 Banyaknya Embung Desa Menurut Nagari di Kecamatan Bonjol, 2018-2020
Table **Number of Village Embungs by Village in Bonjol Subdistrict, 2018-2020**

	Nagari Village	2018*	2019*	2020*
	(1)	(2)	(3)	(4)
1	Koto Kaciak	-	-	1
2	Limo Koto	-	-	-
3	Ganggo Hilia	-	-	-
4	Ganggo Mudiak	-	-	-
5	Persiapan Koto Kaciak Barat*	-
	Bonjol	-	-	1

Catatan/Note:

*Data 2020 termasuk nagari persiapan/The 2020 data includes the preparatory village

Sumber Data/Source:

Badan Pusat Statistik Kabupaten Pasaman, Pendataan Potensi Desa (Podes) 2020/BPS-Statistics of Pasaman Regency Village Potential Data Collection (Podes) 2018-2020



Sensus
Penduduk
2020

#MencatatIndonesia

DATA

MENCERDASKAN BANGSA

Enlighten The Nation



**BADAN PUSAT STATISTIK
KABUPATEN PASAMAN**
BPS-Statistics of Pasaman Regency
Jalan Abdul Latief Nomor 5
Lubuk Sikaping, Kabupaten Pasaman
Telp: (0753)20062, Fax: (0753)20914
Homepage: <http://pasamankab.bps.go.id>
E-mail: bps1309@bps.go.id

ISBN 978-602-5941-56-6



9

786025

941566