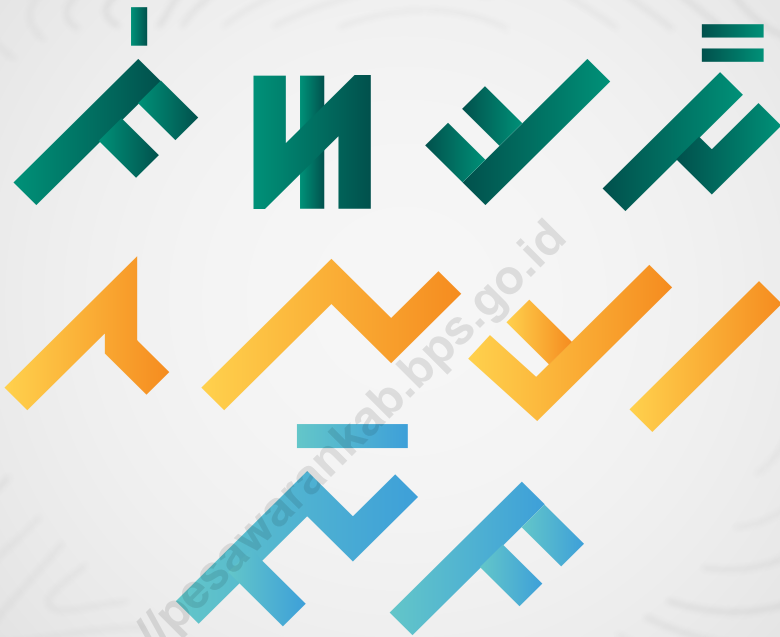


KECAMATAN TEGINENENG DALAM ANGKA

Tegineneng Subdistrict in Figure

2023



**BADAN PUSAT STATISTIK
KABUPATEN PESAWARAN**

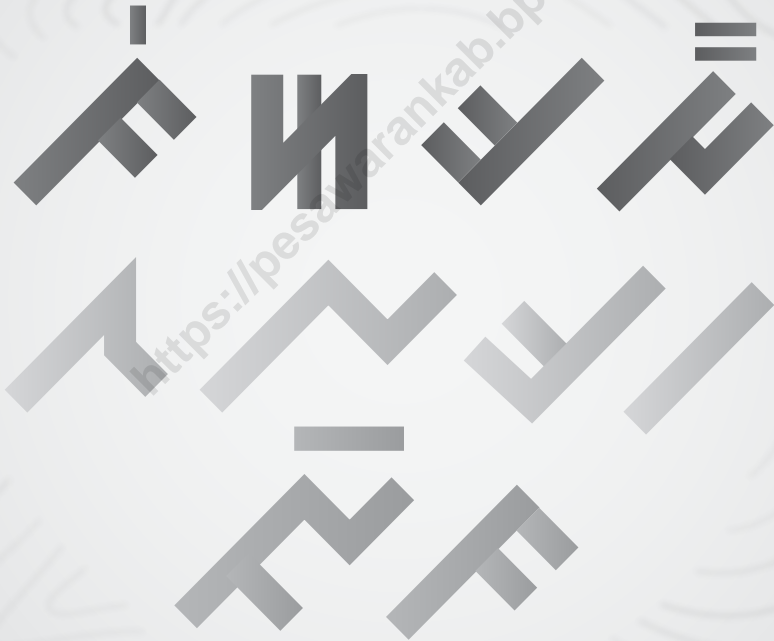
BPS-Statistics Pesawaran Regency



KECAMATAN TEGINENENG DALAM ANGKA

Tegineneng Subdistrict in Figure

2023



KECAMATAN TEGINENENG DALAM ANGKA
Tegineneng Subdistrict in Figures
2023

ISSN: –

No. Publikasi/Publication Number: 18090.2312

Katalog /Catalog: 1102001.1809070

Ukuran Buku/Book Size: 14,8 cm x 21 cm

Jumlah Halaman/Number of Pages : xxii + 54 hal/pages

Naskah/Manuscript:

BPS Kabupaten Pesawaran/BPS-Statistics Pesawaran Regency

Penyunting/Editor:

BPS Kabupaten Pesawaran/BPS-Statistics Pesawaran Regency

Gambar Kover/Cover Design:

Seksi Integrasi Pengolahan dan Diseminasi Statistik

Section of Integration Processing and Statistics Dissemination

Ilustrasi Kover/Cover Illustration:

BPS Kabupaten Pesawaran/BPS-Statistics Pesawaran Regency

Diterbitkan oleh/Published by:

©BPS Kabupaten Pesawaran/BPS-Statistics of Pesawaran Regency

Dicetak oleh/Printed by:

BPS Kabupaten Pesawaran/BPS-Statistics Pesawaran Regency

Dilarang mengumumkan, mendistribusikan, mengomunikasikan, dan/atau menggandakan sebagian atau seluruh isi buku ini untuk tujuan komersil tanpa izin tertulis dari Badan Pusat Statistik.

Prohibited to announce, distribute, communicate, and/or copy part or all of this book for commercial purpose without permission from BPS-Statistics Indonesia.

TIM PENYUSUN/TEAM MEMBERS

Pengarah/Director

Ir. Sugiarto

Penanggung Jawab/Persons in Charge

Rizqa Fithriani, SST., M.Si.

Penyunting/Editors

Ana Destriana, S.Si.

Pengolah Data dan Penulis Naskah/Data Processing and Authors

Aisyah Salsabila, S.Tr.Stat.

Yoga Cahya Putra, S.Tr.Stat.

Sopa Maulidia, A.Md. Stat.

Guruh Dewa Prataba, A.Md. Stat.

Penata Letak/Layout Designers

Aisyah Salsabila, S.Tr.Stat.

Yoga Cahya Putra, S.Tr.Stat.

Sopa Maulidia, A.Md. Stat.

Guruh Dewa Prataba, A.Md. Stat.

Infografik/Infographic

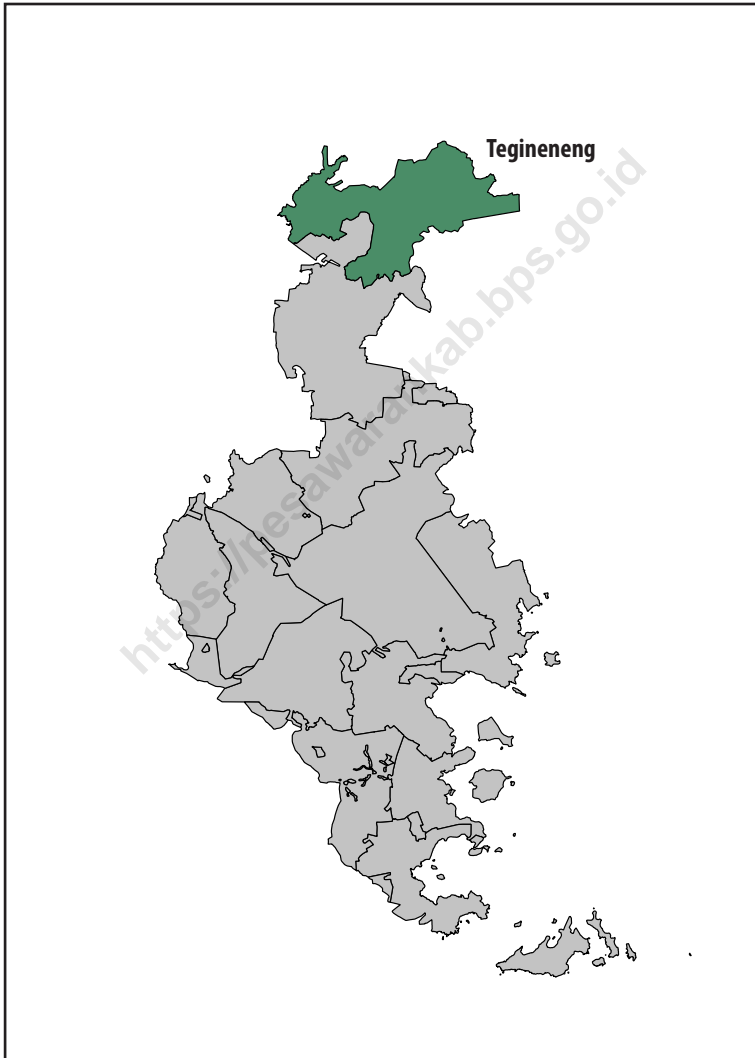
Yoga Cahya Putra, S.Tr.Stat.

Guruh Dewa Prataba, A.Md. Stat.

KONTRIBUTOR DATA/DATA CONTRIBUTOR

1. Badan Pusat Statistik/ *BPS-Statistics Indonesia*
2. Bagian Tata Pemerintahan Kabupaten Pesawaran/ *Regional Government of Pesawaran Regency*
3. Dinas Kependudukan dan Pencatatan Sipil Kabupaten Pesawaran/ *Population and Civil Registration Agency of Pesawaran Regency*
4. Kementerian Pendidikan, Kebudayaan, Riset, dan Teknologi/ *Ministry of Education, Culture, Research, and Technology*
5. Kementerian Agama/ *Ministry of Religious Affairs*
6. Dinas Pertanian dan Tanaman Pangan Kabupaten Pesawaran/ *Agriculture and Food Crops Agency of Pesawaran Regency*
7. Dinas Perkebunan dan Peternakan Kabupaten Pesawaran/ *Estate and Livestock Agency of Pesawaran Regency*

PETA WILAYAH KECAMATAN TEGINENENG
Map of Tegineneng Subdistrict





KATA PENGANTAR

Kecamatan Tegineneng Dalam Angka 2023 merupakan publikasi tahunan yang diterbitkan oleh BPS Kabupaten Pesawaran. Disadari bahwa publikasi ini belum sepenuhnya memenuhi harapan pihak pemakai data khususnya para perencana, namun diharapkan dapat membantu melengkapi penyusunan rencana pembangunan di Kabupaten Pesawaran, khususnya di Kecamatan Tegineneng.

Publikasi ini dapat terwujud berkat kerja sama dan bantuan dari berbagai pihak baik instansi pemerintah maupun swasta. Kepada semua pihak yang telah memberikan bantuan disampaikan penghargaan dan terima kasih yang sebesar-besarnya.

Walaupun publikasi ini telah disiapkan sebaik-baiknya, namun disadari masih ada kekurangan dan kesalahan yang terjadi. Untuk perbaikan publikasi ini, tanggapan dan saran yang bersifat konstruktif dari para pemakai sangat diharapkan.

Gedong Tataan, September 2023
Kepala Badan Pusat Statistik
Kabupaten Pesawaran

Ir Sugiarto



PREFACE

Tegeneneng Subdistrict in Figures 2023 is an annual publication written by BPS-Statistics of Pesawaran Regency. Honestly, this publication has not perfect yet and has not filled the user's hope, especially for the planners yet, but hopefully it can help to equip compilation of development planning in Pesawaran Regency, especially in Tegeneneng Subdistrict.

This comprehensive publication has been made possible with the assistance and contribution from several governmental institutions and private organizations. To all parties who have been involved in the preparation of this publication, I would like to express my sincerest appreciation and gratitude.

Comments and constructive suggestions for the improvement of this publication are always welcome.

*Gedong Tataan, September 2023
Chief Statistician of
Pesawaran Regency*

Ir. Sugiarto

DAFTAR ISI / CONTENTS

	Halaman <i>Page</i>
Kata Pengantar/ <i>Preface</i>	ix
Daftar Isi/ <i>Contents</i>	xi
Daftar Tabel/ <i>List of Tables</i>	ix
Daftar Gambar/ <i>List of Figures</i>	xvii
1. Geografi/ <i>Geography</i>	1
2. Pemerintahan/ <i>Government</i>	7
3. Penduduk/ <i>Population</i>	13
4. Sosial dan Kesejahteraan Rakyat/ <i>Social and Welfare</i>	19
5. Pertanian, Perkebunan, dan Peternakan/ <i>Agriculture, Forestry, and Livestock</i>	29

DAFTAR TABEL/LIST OF TABLES

Halaman
Page

1. GEOGRAFI/GEOGRAPHY

- 1.1 Luas Daerah menurut Desa di Kecamatan Tegineneng, 2022
Total Area by Village in Tegineneng Subdistrict, 2022..... 4
- 1.2 Jarak ke Ibukota Kecamatan, dan Ibukota Kabupaten
menurut Desa di Kecamatan Tegineneng (km), 2022
*Distance to Subdistrict Capital, and Regency Capital by Villages in
Tegineneng Subdistrict (km), 2022*..... 5

2. PEMERINTAHAN/GOVERNMENT

2.1 WILAYAH ADMINISTRATIF/ADMINISTRATIVE AREA

- 2.1.1 Jumlah Dusun, dan Jumlah Rukun Tetangga (RT)
menurut Desa di Kecamatan Tegineneng, 2022
*Number of Hamlet, and Number of Neighbourhood Association by
Villages in Tegineneng Subdistrict, 2022*..... 10

2.2 SUMBER DAYA MANUSIA/HUMAN RESOURCES

- 2.2.1 Jumlah Aparat Pemerintahan Desa menurut
Desa di Kecamatan Tegineneng, 2022
*Number of Village Government Officials by Villages in Tegineneng
Subdistrict, 2022*..... 11

3. PENDUDUK/POPULATION

- 3.1 Penduduk, Distribusi Persentase Penduduk, Kepadatan Penduduk,
dan Rasio Jenis Kelamin menurut Desa di Kecamatan Tegineneng, 2022
*Population, Percentage Distribution of Population, Population
Density, and Sex Ratio, by Village in Tegineneng Subdistrict, 2022*..... 16

4. SOSIAL DAN KESEJAHTERAAN/SOCIAL AND WELFARE

4.1 PENDIDIKAN/EDUCATION

- 4.1.1 Jumlah Sekolah menurut Tingkat Pendidikan di
Kecamatan Tegineneng, 2021/2022 dan 2022/2023
*Number of Schools by Educational Level in Tegineneng Subdistrict,
2021/2022 and 2022/2023*..... 23

4.1.2	Jumlah Guru menurut Tingkat Pendidikan di Kecamatan Tegineneng, 2021/2022 dan 2022/2023 <i>Number of Teachers by Educational Level in Tegineneng Subdistrict, 2021/2022 and 2022/2023.....</i>	24
4.1.3	Jumlah Murid menurut Tingkat Pendidikan di Kecamatan Tegineneng, 2021/2022 dan 2022/2023 <i>Number of Pupils by Educational Level in Tegineneng Subdistrict, 2021/2022 and 2022/2023.....</i>	25
4.2	KESEHATAN/HEALTH	
4.2.1	Banyaknya Desa yang Memiliki Sarana Kesehatan menurut Jenisnya di Kecamatan Tegineneng 2020-2022 <i>Number of Villages That Have Health Facilities by Type in Tegineneng Subdistrict 2020-2022</i>	26
4.2.2	Banyaknya Warga Penderita Kekurangan Gizi menurut Desa di Kecamatan Tegineneng, 2020-2022 <i>Number of People with Malnutrition by Village in Tegineneng Subdistrict, 2020-2022</i>	27
4.3	AGAMA DAN SOSIAL LAINNYA RELIGION AND OTHER SOCIAL AFFAIRS	
4.3.1	Jumlah Tempat Peribadatan menurut Desa di Kecamatan Tegineneng, 2022 <i>Number of Places of Worship by Village in Tegineneng Subdistrict, 2022</i>	28
5.	PERTANIAN, PERKEBUNAN, DAN PETERNAKAN/ AGRICULTURE, ESTATE, AND LIVESTOCK	
5.1	LUAS LAHAN/LAND AREA	
5.1.1	Luas Lahan menurut Desa dan Jenis Penggunaan Lahan di Kecamatan Tegineneng (ha), 2022 <i>Land Area by Village and Type of Land Use in Tegineneng Subdistrict (ha), 2022</i>	33
5.1.2	Luas Lahan Pertanian Sawah menurut Desa dan Jenis Pengairan di Kecamatan Tegineneng (ha), 2022 <i>Wetland Area by Village and Type of Irrigation in Tegineneng Subdistrict (ha), 2022</i>	34

5.1.3	Luas Lahan Pertanian Non Sawah menurut Desa dan Jenis Penggunaan Lahan di Kecamatan Tegineneng (ha), 2022 <i>Non-Wetland Area by Village and Type of Land Use in Tegineneng Subdistrict (ha), 2022</i>	35
5.2	TANAMAN PANGAN/FOOD CROPS	
5.2.1	Luas Panen (ha) dan Produksi Tanaman Pangan (ton) menurut Desa dan Jenis Tanaman di Kecamatan Tegineneng, 2022 <i>Harvested Area (ha) and Production (ton) of Food Crops by Village and Kind of Plant in Tegineneng Subdistrict, 2022</i>	37
5.3	HORTIKULTURA/HORTICULTURE	
5.3.1	Luas Panen Tanaman Sayuran dan Buah–Buahan Semusim menurut Jenis Tanaman di Kecamatan Tegineneng , 2019-2022 <i>Harvested Area of Seasonal Vegetables and Fruits by Kind of Plant in Tegineneng Subdistrict, 2019-2022</i>	41
5.3.2	Produksi Tanaman Sayuran dan Buah–Buahan Semusim Menurut Jenis Tanaman di Kecamatan Tegineneng, 2019-2022 <i>Production of Seasonal Vegetables and Fruits by Kind of Plant in Tegineneng Subdistrict, 2019-2022</i>	42
5.3.3	Luas Panen Tanaman Biofarmaka menurut Jenis Tanaman di Kecamatan Tegineneng, 2019–2022 <i>Harvested Area of Medicinal Plants by Kind of Plant in Tegineneng Subdistrict, 2019–2022</i>	43
5.3.4	Produksi Tanaman Biofarmaka menurut Jenis Tanaman di Kecamatan Tegineneng, 2019–2022 <i>Production of Medicinal Plants by Kind of Plant in Tegineneng Subdistrict, 2019–2022</i>	44
5.3.5	Luas Panen Tanaman Hias menurut Jenis Tanaman di Kecamatan Tegineneng, 2019–2022 <i>Harvested Area of Ornamental Plants by Kind of Plant in Tegineneng Subdistrict, 2019–2022</i>	45
5.3.6	Produksi Tanaman Hias menurut Jenis Tanaman di Kecamatan Tegineneng, 2019-2022 <i>Production of Ornamental Plants by Kind of Plant in Tegineneng Subdistrict, 2019-2022</i>	46

5.3.7	Produksi Buah–Buahan dan Sayuran Tahunan menurut Jenis Tanaman di Kecamatan Tegineneng, 2019–2022 <i>Production of Annual Fruits and Vegetables by Kind of Plant in Tegineneng Subdistrict, 2019–2022</i>	47
5.4	PERKEBUNAN/ESTATE	
5.4.1	Luas Panen (ha) dan Produksi (ton) Tanaman Perkebunan menurut Jenis Tanaman di Kecamatan Tegineneng, 2022 <i>Harvest Area (ha) and Production (ton) of Estate Crops by Kind of Plant in Tegineneng Subdistrict, 2022</i>	48
5.5	PETERNAKAN/LIVESTOCK	
5.5.1	Populasi Ternak menurut Jenis Ternak dan Desa di Kecamatan Tegineneng, 2022 <i>Livestock Population by Kind of Livestock and Villages in Tegineneng Subdistrict, 2022</i>	51
5.5.2	Populasi Unggas menurut Jenis Unggas dan Desa di Kecamatan Tegineneng, 2022 <i>Poultry Population by Kind of Poultry and Villages in Tegineneng Subdistrict, 2022</i>	52
5.5.3	Jumlah Pemotongan Ternak/Unggas Tercatat menurut Jenis Ternak/Unggas di Kecamatan Tegineneng, 2022 <i>Number of Slaughters of Livestock/Poultry Recorded by Kind of Livestock/Poultry in Tegineneng Subdistrict, 2022</i>	53
5.5.4	Produksi Daging dan Telur menurut Jenis Ternak/ Unggas di Kecamatan Tegineneng (kg), 2022 <i>Flesh and Egg Production by Kind of Livestock/Poultry in Tegineneng Subdistrict (kg), 2022</i>	54

DAFTAR GAMBAR/LIST OF FIGURES

	Halaman Page	
1.1	Persentase Luas Daerah Terhadap Luas Kecamatan menurut Desa di Kecamatan Tegineneng, 2022 <i>Percentage of Area To Subdistrict Area by Village in Tegineneng Subdistrict, 2022</i>	3
2.1	Jumlah Dusun dan Jumlah Rukun Tetangga (RT) menurut Desa di Kecamatan Tegineneng, 2022 <i>Number of Hamlet and Number of Neighbourhood Association by Villages in Tegineneng Subdistrict, 2022</i>	9
3.1	Jumlah Penduduk menurut Desa di Kecamatan Tegineneng, 2022 <i>Population by Village in Tegineneng Subdistrict, 2022</i>	15
4.1	Jumlah Sekolah menurut Tingkat Pendidikan di Kecamatan Tegineneng, 2022/2023 <i>Number of Schools by Educational Level in Tegineneng Subdistrict, 2022/2023</i>	21
4.2	Banyaknya Desa yang Memiliki Sarana Kesehatan menurut Jenisnya di Kecamatan Tegineneng, 2022 <i>Number of Villages That Have Health Facilities by Type in Tegineneng Subdistrict, 2022</i>	22
5.1	Lima Komoditas Tanaman Sayuran dan Buah–Buahan Semusim dengan Jumlah Produksi Terbesar di Kecamatan Tegineneng, 2022 <i>Five Commodities of Seasonal Vegetables and Fruits with The Largest Production in Tegineneng Subdistrict, 2022</i>	31
5.2	Lima Komoditas Tanaman Sayuran dan Buah–Buahan Tahunan dengan Jumlah Produksi Terbesar di Kecamatan Tegineneng, 2019-2022 <i>Five Commodities of Annual Vegetables and Fruits with The Largest Production in Tegineneng Subdistrict, 2019-2022</i>	32

PENJELASAN UMUM/EXPLANATORY NOTES

Tanda-tanda, satuan-satuan, dan lain-lainnya yang digunakan dalam publikasi ini adalah sebagai berikut:

Symbols, measurement units, and acronyms which are used in this publication, are as follows:

1. TANDA-TANDA/SYMBOLS

Data tidak tersedia/Data not available	: ...
Tidak ada atau nol /Null or zero	: -
Data dapat diabaikan/Data negligible	: 0
Tanda decimal/Decimal point	: ,
Data tidak dapat ditampilkan/Not applicable	: NA
Angka estimasi/Estimated figures	: e
Angka diperbaiki/Revised figures	: r
Angka sementara/Preliminary figures	: x
Angka sangat sementara/Very preliminary figures	: xx
Angka sangat sangat sementara/Very very preliminary figures	: xxx

2. SATUAN/UNITS

barel/barrel	: 158,99 liter/litres = 1/6,2898 m ³
hektar (ha)/hectare (ha)	: 10 000 m ²
kilometer (km)/kilometres (km)	: 1 000 meter/meters (m)
knot/knot	: 1,8523 km/jam (km/hour)
kuintal/quintal	: 100 kg
KWh	: 1 000 Watt hour
MWh	: 1 000 KWh
liter (untuk beras)/litre (for rice)	: 0,80 kg
MMSCF	: 1/35,3 m ³
metrik ton (m.ton)/metric ton (m. ton)	: 0,98421 long ton = 1 000 kg
ons/ounce	: 28,31 gram/grams
ton	: 1 000 kg

Satuan lain: buah, dus, butir, helai/lembar, kaleng, batang, pulsa, ton kilometer (ton-km), jam, menit, persen (%).

Other units: unit, pack, pieces, sheet, tin, pulse, ton-kilometres(ton-km), hour, minute, percent (%).

Perbedaan angka di belakang koma disebabkan oleh pembulatan angka.

The difference in decimal numbers is caused by rounding.

DAFTAR SINGKATAN/ LIST OF ABBREVIATIONS

SI	: Stasiun Iklim
SIMPK	: Stasiun Meteorologi Pertanian Khusus
t.t	: Tempat tidur
BCG	: Bacillus Calmette Guerin
DPT	: Difteri, Pertusis, Tetanus
TT	: Tetanus Toxoid
IOT	: Industri Obat Tradisional/ <i>Traditional Medicine Industry</i>
IKOT	: Industri Kecil Obat Tradisional/ <i>Traditional Medicine Small</i>
Alkes	: Alat kesehatan/ <i>Health Kits</i>
PKRT	: Perbekalan Kesehatan Rumah tangga/ <i>Household Health Logistics</i>
Kompl	: Komplemen/ <i>Complement</i>
IRTP	: Industri Pangan Produksi Rumah Tangga/ <i>Foods Home Industry</i>
PBF	: Pedagang Besar Farmasi/ <i>Pharmacy Whole-seller</i>
GFK	: Gudang Farmasi Kab/Kota/Regency/ <i>Municipality Pharmacy Warehouse</i>
RB	: Rumah Bersalin/ <i>Delivery House</i>
Pustu	: Puskesmas pembantu/ <i>Auxiliary Public Health Center</i>
BP	: Balai Pengobatan/ <i>Polyclinic</i>
TPS	: Tempat Pembuangan Sementara / <i>landfill</i>
Jamkesmas	: Jaminan kesehatan masyarakat miskin/ <i>Poor public health insurance</i>
PJKMU	: Program Jaminan Kesehatan Masyarakat Umum
SIUP	: Surat Ijin Usaha Perdagangan/ <i>Trading Permission Letter</i>
TDP	: Tanda Daftar Perusahaan/ <i>Company Registration Identity</i>
API	: Angka Pengenal Importir/ <i>Importer's Identity Number</i>

01

GEOGRAFI

GEOGRAPHY



GPS MARKERS



CARTOGRAPHY



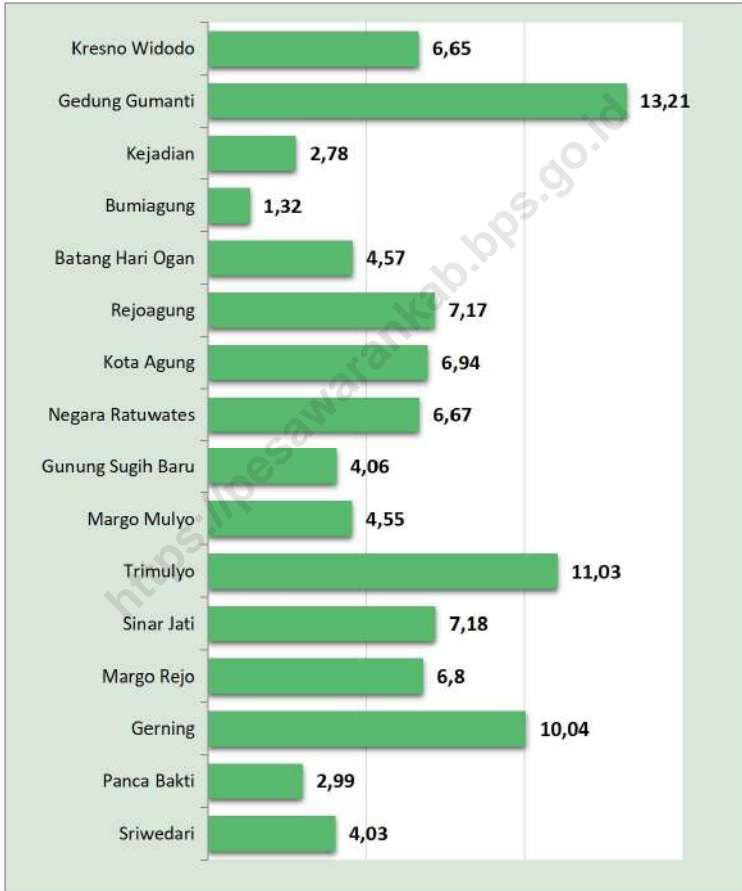
NAVIGATION



LOCATION

Gambar 1.1
Figures

Persentase Luas Daerah Terhadap Luas Kecamatan menurut Desa di Kecamatan Tegineneng, 2022
Percentage of Area To Subdistrict Area by Village in Tegineneng Subdistrict, 2022



Sumber/Source: Bagian Tata Pemerintahan Setdakab. Pesawaran/Regional Government of Pesawaran Regency

Tabel
Table 1.1**Luas Daerah menurut Desa di Kecamatan Tegineneng, 2022**
Total Area by Village in Tegineneng Subdistrict, 2022

Kelurahan/Desa Kelurahan/Village	Luas Total Area (km ² /sq.km)	Persentase terhadap Luas Kecamatan Percentage to Subdistrict Area
(1)	(2)	(3)
1. Kresno Widodo	10,06	6,65
2. Gedung Gumanti	19,00	13,21
3. Kejadian	4,20	2,78
4. Bumiagung	7,20	1,32
5. Batang Hari Ogan	5,29	4,57
6. Rejoagung	10,85	7,17
7. Kota Agung	10,50	6,94
8. Negara Ratuwates	10,10	6,67
9. Gunung Sugih Baru	5,30	4,06
10. Margo Mulyo	6,89	4,55
11. Trimulyo	15,20	11,03
12. Sinar Jati	10,82	7,18
13. Margo Rejo	10,22	6,80
14. Gerning	15,00	10,04
15. Panca Bakti	4,53	2,99
16. Sriwedari	6,10	4,03
Kecamatan Tegineneng	151,26	100,00

Sumber/Source: Bagian Tata Pemerintahan Setdakab. Pesawaran/Regional Government of Pesawaran Regency

Tabel
Table 1.2

Jarak ke Ibukota Kecamatan, dan Ibukota Kabupaten menurut Desa di Kecamatan Tegineneng (km), 2022
Distance to Subdistrict Capital, and Regency Capital by Villages in Tegineneng Subdistrict (km), 2022

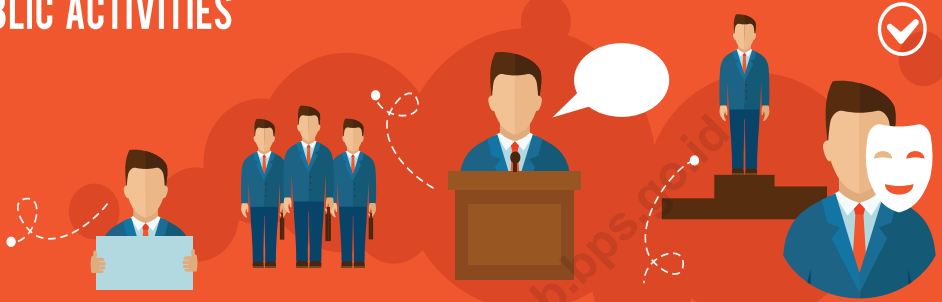
Desa/Village	Jarak ke Ibukota Kecamatan <i>Distance to Subdistrict Capital</i>	Jarak ke Ibukota Kabupaten <i>Distance to Regency Capital</i>
(1)	(2)	(3)
1. Kresno Widodo	8,00	35,00
2. Gedung Gumanti	7,00	20,00
3. Kejadian	7,00	20,00
4. Bumiagung	7,00	35,00
5. Batang Hari Ogan	10,00	60,00
6. Rejoagung	14,00	36,00
7. Kota Agung	14,00	34,00
8. Negara Ratuwates	14,00	35,00
9. Gunung Sugih Baru	14,00	45,00
10. Margo Mulyo	8,00	34,00
11. Trimulyo	0,50	20,00
12. Sinar Jati	4,00	25,00
13. Margo Rejo	10,00	60,00
14. Gerning	5,00	50,00
15. Panca Bakti	3,00	28,00
16. Sriwedari	3,00	28,00

Sumber/Source: Bagian Tata Pemerintahan Setdakab. Pesawaran/Regional Government of Pesawaran Regency

02

PEMERINTAHAN GOVERNMENT

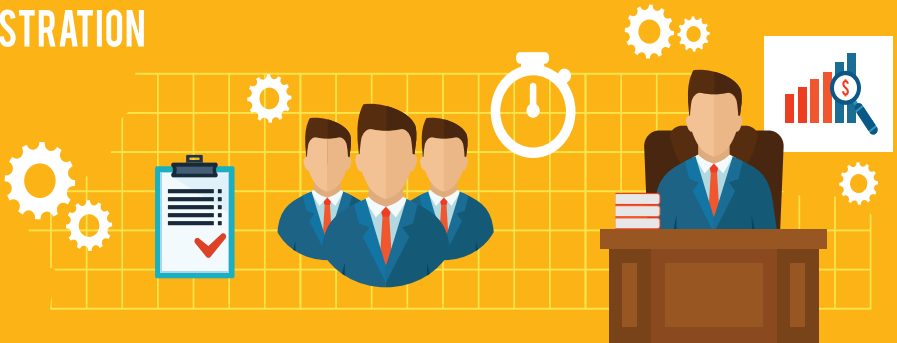
PUBLIC ACTIVITIES



GOVERNANCE

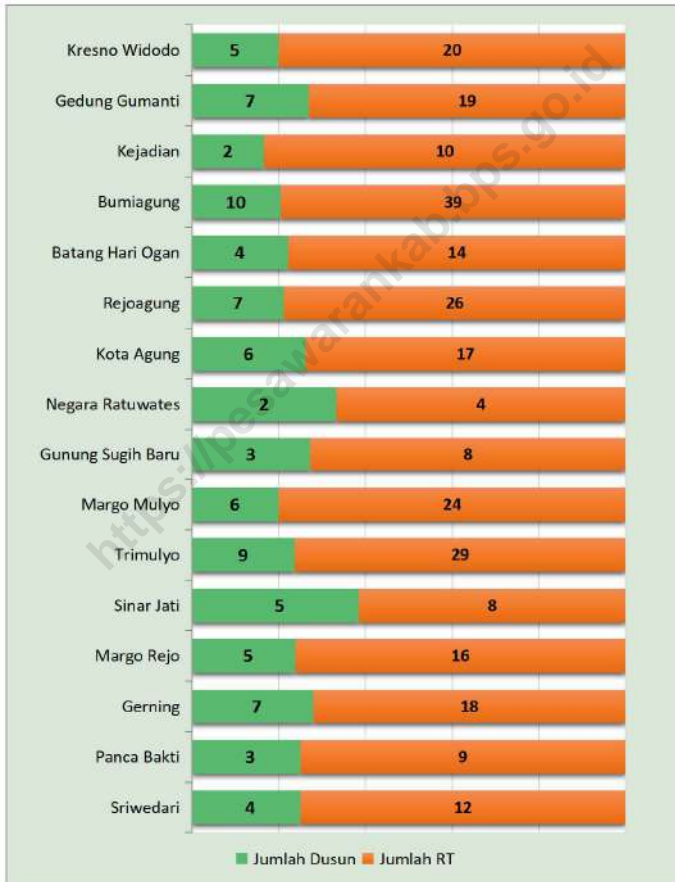


ADMINISTRATION



Gambar 2.1
Figures

**Jumlah Dusun dan Jumlah Rukun Tetangga (RT)
menurut Desa di Kecamatan Tegineneng, 2022**
*Number of Hamlet and Number of Neighbourhood
Association by Villages in Tegineneng Subdistrict, 2022*



Sumber/Source: Dinas Pemberdayaan Masyarakat dan Desa Kabupaten Pesawaran
Community and Village Empowerment Agency of Pesawaran Regency

2.1 WILAYAH ADMINISTRATIF ADMINISTRATIVE AREA

Tabel 2.1.1 Jumlah Dusun, dan Jumlah Rukun Tetangga (RT) menurut Desa di Kecamatan Tegineneng, 2022
Table 2.1.1 Number of Hamlet, and Number of Neighbourhood Association by Villages in Tegineneng Subdistrict, 2022

Desa/Village	Jumlah Dusun Number of Hamlet	Jumlah RT Number of Neighbourhood Association
(1)	(3)	(4)
1. Kresno Widodo	5	20
2. Gedung Gumanti	7	19
3. Kejadian	2	10
4. Bumiagung	10	39
5. Batang Hari Ogan	4	14
6. Rejoagung	7	26
7. Kota Agung	6	17
8. Negara Ratuwates	2	4
9. Gunung Sugih Baru	3	8
10. Margo Mulyo	6	24
11. Trimulyo	9	29
12. Sinar Jati	5	8
13. Margo Rejo	5	16
14. Gerning	7	18
15. Panca Bakti	3	9
16. Sriwedari	4	12
Kecamatan Tegineneng	85	273

Sumber/Source: Dinas Pemberdayaan Masyarakat dan Desa Kabupaten Pesawaran
Community and Village Empowerment Agency of Pesawaran Regency

2.2 SUMBER DAYA MANUSIA HUMAN RESOURCES

Tabel 2.2.1 Jumlah Aparat Pemerintahan Desa menurut Desa di Kecamatan Tegineneng, 2022
Number of Village Government Officials by Villages in Tegineneng Subdistrict, 2022

Desa/Village	Sekretariat Desa (Sekdes, Kaur) Village Secretariat	Pelaksana Teknis (Kasi) Technical Executor	Pelaksana Kewilayahan (Kadus) Regional Executor
(1)	(2)	(3)	(4)
1. Kresno Widodo	4	3	5
2. Gedung Gumanti	4	3	7
3. Kejadian	4	3	2
4. Bumiagung	4	3	10
5. Batang Hari Ogan	4	3	4
6. Rejoagung	4	3	7
7. Kota Agung	4	3	6
8. Negara Ratuwates	4	3	2
9. Gunung Sugih Baru	4	3	3
10. Margo Mulyo	4	3	6
11. Trimulyo	4	3	9
12. Sinar Jati	4	3	5
13. Margo Rejo	4	3	5
14. Gerning	4	3	7
15. Panca Bakti	4	3	3
16. Sriwedari	4	3	4
Kecamatan Tegineneng	64	48	85

Sumber/Source: Dinas Pemberdayaan Masyarakat dan Desa Kabupaten Pesawaran
Community and Village Empowerment Agency of Pesawaran Regency

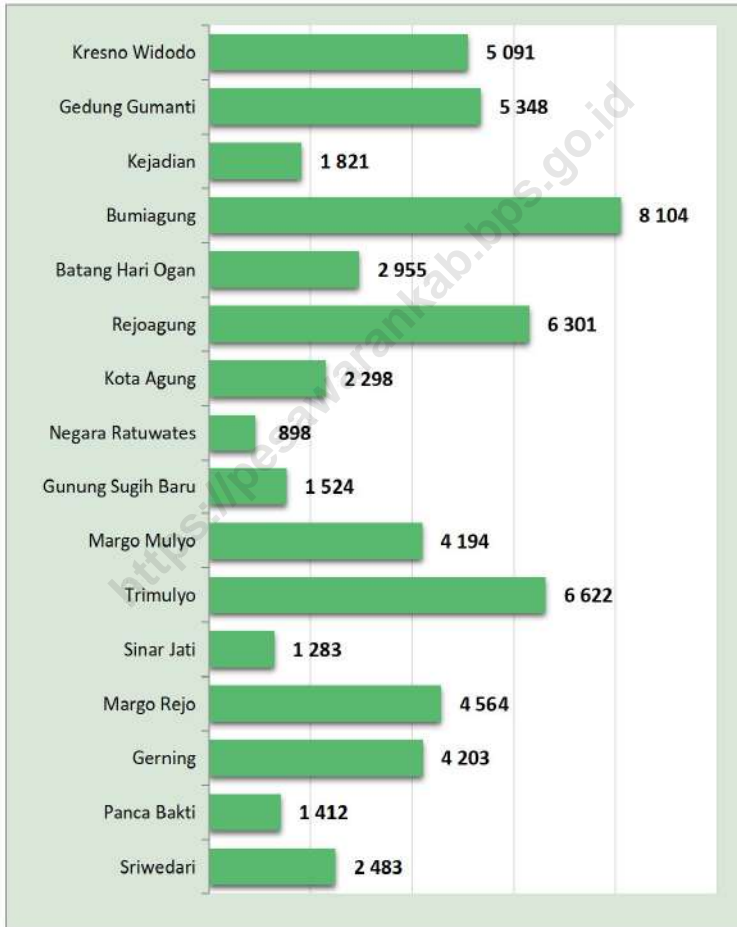
03

PENDUDUK POPULATION



Gambar 3.1
Figures

Jumlah Penduduk menurut Desa di Kecamatan Tegineneng, 2022
Population by Village in Tegineneng Subdistrict, 2022



Sumber/Source: Dinas Kependudukan dan Pencatatan Sipil Kabupaten Pesawaran
Population and Civil Registration Agency of Pesawaran Regency

Tabel
Table 3.1

Penduduk, Distribusi Persentase Penduduk, Kepadatan Penduduk, dan Rasio Jenis Kelamin menurut Desa di Kecamatan Tegineneng, 2022
Population, Percentage Distribution of Population, Population Density, and Sex Ratio, by Village in Tegineneng Subdistrict, 2022

Desa/Village	Penduduk (jiwa) Population (people)		
	Laki-laki Male	Perempuan Female	Jumlah Total
(1)	(2)	(3)	(4)
1. Kresno Widodo	2 574	2 517	5 091
2. Gedung Gumanti	2 720	2 628	5 348
3. Kejadian	919	902	1 821
4. Bumiagung	4 137	3 967	8 104
5. Batang Hari Ogan	1 470	1 485	2 955
6. Rejoagung	3 260	3 041	6 301
7. Kota Agung	1 169	1 129	2 298
8. Negara Ratuwates	461	437	898
9. Gunung Sugih Baru	777	747	1 524
10. Margo Mulyo	2 110	2 084	4 194
11. Trimulyo	3 426	3 196	6 622
12. Sinar Jati	660	623	1 283
13. Margo Rejo	2 353	2 211	4 564
14. Gerning	2 159	2 044	4 203
15. Panca Bakti	687	725	1 412
16. Sriwedari	1 238	1 245	2 483
Kecamatan Tegineneng	30 120	28 981	59 101

Lanjutan Tabel/ *Continued Table 3.1*

Desa/Village	Distribusi Persentase Penduduk Percentage Distribution of Population	Kepadatan Penduduk per km ² Population Density per sq.km	Rasio Jenis Kelamin Sex Ratio
(1)	(5)	(6)	(7)
1. Kresno Widodo	8,61	506,06	102,26
2. Gedung Gumanti	9,05	281,47	103,50
3. Kejadian	3,08	433,57	101,88
4. Bumiagung	13,71	1 125,56	104,29
5. Batang Hari Ogan	5,00	558,60	98,99
6. Rejoagung	10,66	580,74	107,20
7. Kota Agung	3,89	218,86	103,54
8. Negara Ratuwates	1,52	88,91	105,49
9. Gunung Sugih Baru	2,58	287,55	104,02
10. Margo Mulyo	7,10	608,71	101,25
11. Trimulyo	11,20	435,66	107,20
12. Sinar Jati	2,17	118,58	105,94
13. Margo Rejo	7,72	446,58	106,42
14. Gerning	7,11	280,20	105,63
15. Panca Bakti	2,39	311,70	94,76
16. Sriwedari	4,20	407,05	99,44
Kecamatan Tegineneng	100,00	390,72	103,93

Sumber/Source: Dinas Kependudukan dan Pencatatan Sipil Kabupaten Pesawaran
Population and Civil Registration Agency of Pesawaran Regency

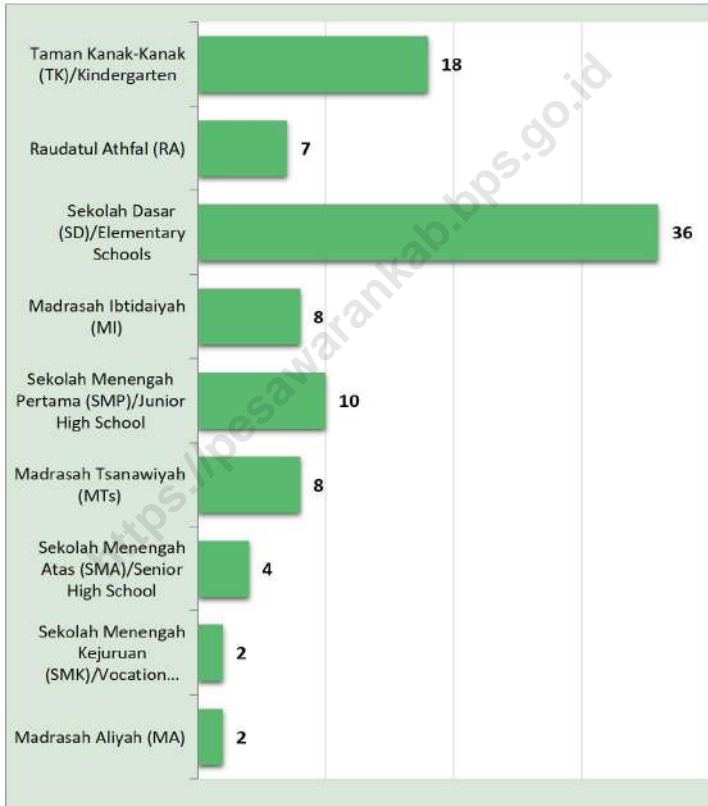
04

SOSIAL & SEJAHTERAAN RAKYAT SOCIAL & WELFARE



Gambar
Figures 4.1

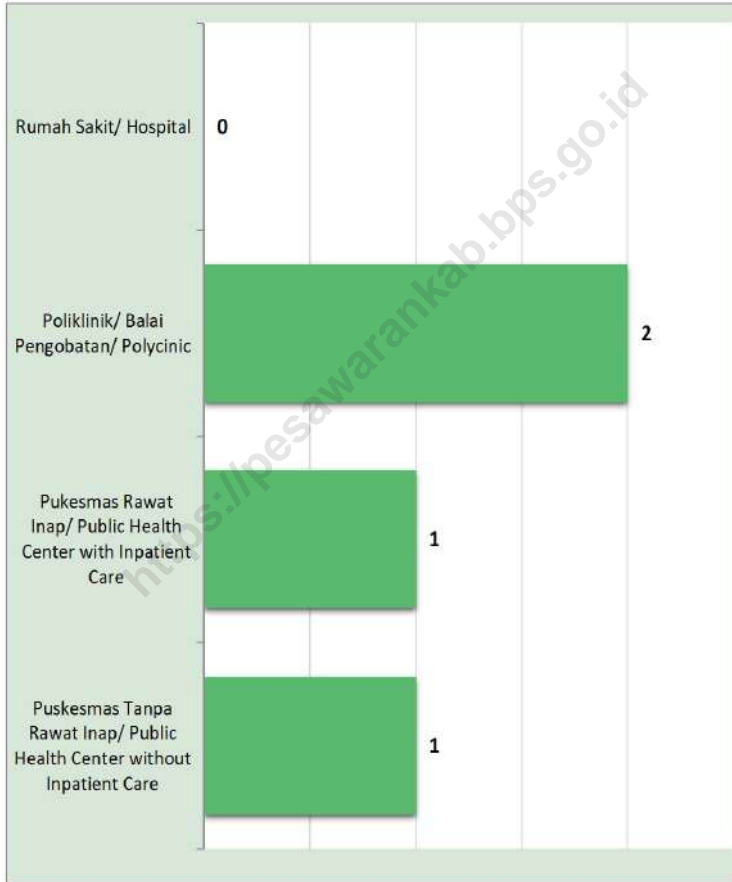
**Jumlah Sekolah menurut Tingkat Pendidikan di
Kecamatan Tegineneng, 2022/2023**
*Number of Schools by Educational Level in Tegineneng
Subdistrict, 2022/2023*



Sumber/Source: ¹ Kementerian Pendidikan, Kebudayaan, Riset, dan Teknologi, Sistem Data Pokok Pendidikan, data semester ganjil laporan sampai dengan 30 November 2022/Ministry of Education, Culture, Research, and Technology, Basic Education Data System, odd semester report data up to 30 November 2022
² Kementerian Agama, EMIS, data semester ganjil laporan sampai dengan 9 Februari 2023/Ministry of Religious Affairs, EMIS, odd semester report data up to 9 February 2023

Gambar 4.2
Figures

Banyaknya Desa yang Memiliki Sarana Kesehatan menurut Jenisnya di Kecamatan Tegineneng, 2022
Number of Villages That Have Health Facilities by Type in Tegineneng Subdistrict, 2022



Sumber/Source: Dinas Kesehatan Kabupaten Pesawaran/Health Agency of Pesawaran Regency

4.1 PENDIDIKAN EDUCATION

Tabel 4.1.1 Jumlah Sekolah menurut Tingkat Pendidikan di Kecamatan Tegineneng, 2021/2022 dan 2022/2023
Table 4.1.1 Number of Schools by Educational Level in Tegineneng Subdistrict, 2021/2022 and 2022/2023

Tingkat Pendidikan Educational Level	Negeri/Public		Swasta/Private		Jumlah/Total	
	2021/2022	2022/2023	2021/2022	2022/2023	2021/2022	2022/2023
(1)	(2)	(3)	(4)	(5)	(6)	(7)
Taman Kanak-Kanak (TK) ¹ /Kindergarten ¹	–	–	18	19	18	18
Raudatul Athfal (RA) ²	–	–	7	7	7	7
Sekolah Dasar (SD) ¹ Elementary Schools ¹	35	35	1	1	36	36
Madrasah Ibtidaiyah (MI) ²	–	–	8	8	8	8
Sekolah Menengah Pertama (SMP) ¹ /Junior High Schools ¹	5	5	5	5	10	10
Madrasah Tsanawiyah (MTs) ²	–	–	8	8	8	8
Sekolah Menengah Atas (SMA) ¹ /Senior High Schools ¹	2	2	2	2	4	4
Sekolah Menengah Kejuruan (SMK) ¹ Vocational High Schools ¹	1	1	1	1	2	2
Madrasah Aliyah (MA) ²	–	–	2	2	2	2

Catatan/Note: Seluruh Raudatul Athfal (RA) berstatus swasta/All Raudatul Athfal (RA) are private

Sumber/Source: ¹ Kementerian Pendidikan, Kebudayaan, Riset, dan Teknologi, Sistem Data Pokok Pendidikan, data semester ganjil laporan sampai dengan 30 November 2022/Ministry of Education, Culture, Research, and Technology, Basic Education Data System, odd semester report data up to 30 November 2022

² Kementerian Agama, EMIS, data semester ganjil laporan sampai dengan 9 Februari 2023/Ministry of Religious Affairs, EMIS, odd semester report data up to 9 February 2023

Tabel 4.1.2 Jumlah Guru menurut Tingkat Pendidikan di Kecamatan Tegineneng, 2021/2022 dan 2022/2023
Table Number of Teachers by Educational Level in Tegineneng Subdistrict, 2021/2022 and 2022/2023

Tingkat Pendidikan Educational Level	Negeri/Public		Swasta/Private		Jumlah/Total	
	2021/2022	2022/2023	2021/2022	2022/2023	2021/2022	2022/2023
(1)	(2)	(3)	(4)	(5)	(6)	(7)
Taman Kanak-Kanak (TK) ¹ /Kindergarten ¹	–	–	72	79	72	72
Raudatul Athfal (RA) ²	–	–	36	40	36	40
Sekolah Dasar (SD) ¹ Elementary Schools ¹	374	383	4	4	378	387
Madrasah Ibtidaiyah (MI) ²	–	–	87	95	87	95
Sekolah Menengah Pertama (SMP) ¹ /Junior High Schools ¹	115	114	40	37	155	151
Madrasah Tsanawiyah (MTs) ²	–	–	112	120	112	120
Sekolah Menengah Atas (SMA) ¹ /Senior High Schools ¹	58	59	11	12	69	71
Sekolah Menengah Kejuruan (SMK) ¹ Vocational High Schools ¹	29	31	19	20	48	51
Madrasah Aliyah (MA) ²	–	–	29	33	29	33

Catatan/Note: Jumlah guru termasuk kepala sekolah dan guru/The total of teachers including headmaster and teacher.

Sumber/Source: ¹ Kementerian Pendidikan, Kebudayaan, Riset, dan Teknologi, Sistem Data Pokok Pendidikan, data semester ganjil laporan sampai dengan 30 November 2022/Ministry of Education, Culture, Research, and Technology, Basic Education Data System, odd semester report data up to 30 November 2022

² Kementerian Agama, EMIS, data semester ganjil laporan sampai dengan 9 Februari 2023/Ministry of Religious Affairs, EMIS, odd semester report data up to 9 February 2023

Tabel
Table 4.1.3

Jumlah Murid menurut Tingkat Pendidikan di Kecamatan Tegineneng, 2021/2022 dan 2022/2023
Number of Pupils by Educational Level in Tegineneng Subdistrict, 2021/2022 and 2022/2023

Tingkat Pendidikan Educational Level	Negeri/Public		Swasta/Private		Jumlah/Total	
	2021/2022	2022/2023	2021/2022	2022/2023	2021/2022	2022/2023
(1)	(2)	(3)	(4)	(5)	(6)	(7)
Taman Kanak-Kanak (TK) ¹ /Kindergarten ¹	–	–	696	753	696	753
Raudatul Athfal (RA) ²	–	–	211	235	211	235
Sekolah Dasar (SD) ¹ Elementary Schools ¹	5 086	4 987	20	20	5 106	5 007
Madrasah Ibtidaiyah (MI) ²	–	–	1 062	1 139	1 062	1 139
Sekolah Menengah Pertama (SMP) ¹ /Junior High Schools ¹	1 455	1 433	393	501	1 848	1 934
Madrasah Tsanawiyah (MTs) ²	–	–	1 142	1 174	1 142	1 174
Sekolah Menengah Atas (SMA) ¹ /Senior High Schools ¹	737	805	132	164	869	969
Sekolah Menengah Kejuruan (SMK) ¹ Vocational High Schools ¹	352	365	354	320	706	685
Madrasah Aliyah (MA) ²	–	–	280	304	280	304

Sumber/Source: ¹ Kementerian Pendidikan, Kebudayaan, Riset, dan Teknologi, Sistem Data Pokok Pendidikan, data semester ganjil laporan sampai dengan 30 November 2022/Ministry of Education, Culture, Research, and Technology, Basic Education Data System, odd semester report data up to 30 November 2022

² Kementerian Agama, EMIS, data semester ganjil laporan sampai dengan 9 Februari 2023/Ministry of Religious Affairs, EMIS, odd semester report data up to 9 February 2023

4.2 KESEHATAN HEALTH

Tabel 4.2.1 **Banyaknya Desa yang Memiliki Sarana Kesehatan menurut Jenisnya di Kecamatan Tegineneng 2020-2022**
Table 4.2.1 **Number of Villages That Have Health Facilities by Type in Tegineneng Subdistrict 2020-2022**

Jenis Sarana Kesehatan Type of Health Facilities	2020	2021	2022
(1)	(2)	(3)	(4)
Rumah Sakit <i>Hospital</i>	–	–	–
Rumah Sakit Bersalin <i>Maternity Hospital</i>
Poliklinik/Balai Pengobatan <i>Polyclinic</i>	1	1	1
Puskesmas Rawat Inap <i>Public Health Center with Inpatient Care</i>	...	1	1
Puskesmas Tanpa Rawat Inap <i>Public Health Center without Inpatient Care</i>	...	1	1
Apotek <i>Pharmacy</i>

Sumber/Source: Dinas Kesehatan Kabupaten Pesawaran/Health Agency of Pesawaran Regency

Tabel
Table 4.2.2**Banyaknya Warga Penderita Kekurangan Gizi menurut Desa di Kecamatan Tegineneng, 2020-2022**
Number of People with Malnutrition by Village in Tegineneng Subdistrict, 2020-2022

Desa/Village	2020	2021	2022
(1)	(2)	(3)	(4)
1. Kresno Widodo
2. Gedung Gumanti
3. Kejadian
4. Bumiagung
5. Batang Hari Ogan
6. Rejoagung
7. Kota Agung
8. Negara Ratuwates
9. Gunung Sugih Baru
10. Margo Mulyo
11. Trimulyo
12. Sinar Jati
13. Margo Rejo
14. Gerning
15. Panca Bakti
16. Sriwedari
Kecamatan Tegineneng	31	7	1

Sumber/Source: Dinas Kesehatan Kabupaten Pesawaran/Health Agency of Pesawaran Regency

4.3 AGAMA DAN SOSIAL LAINNYA RELIGION AND OTHER SOCIAL AFFAIRS

Tabel 4.3.1 Jumlah Tempat Peribadatan menurut Desa di Kecamatan Tegineneng, 2022
Table 4.3.1 Number of Places of Worship by Village in Tegineneng Subdistrict, 2022

Desa/Village	Masjid	Mushola Pray Room	Gereja Church	Pura Temple	Vihara
(1)	(2)	(3)	(4)	(6)	(7)
1. Kresno Widodo	6	17	–	–	–
2. Gedung Gumanti	8	–	–	–	–
3. Kejadian	3	–	–	–	–
4. Bumiagung	16	17	1	–	–
5. Batang Hari Ogan	4	–	–	–	–
6. Rejoagung	10	–	–	–	–
7. Kota Agung	7	5	–	–	–
8. Negara Ratuwates	2	–	–	–	–
9. Gunung Sugih Baru	3	–	–	–	–
10. Margo Mulyo	6	–	2	–	–
11. Trimulyo	10	–	1	–	–
12. Sinar Jati	5	2	–	–	–
13. Margo Rejo	4	6	–	–	–
14. Gerning	12	9	–	–	–
15. Panca Bakti	4	3	–	–	–
16. Sriwedari	5	–	1	–	–
Kecamatan Tegineneng	105	71	5	–	–

Sumber/Source: Kementerian Agama Kabupaten Pesawaran/Ministry of Religious Affair of Pesawaran Regency

05

PERTANIAN, PERKEBUNAN, & PETERNAKAN AGRICULTURE, ESTATE, & LIVESTOCK



Gambar 5.1
Figures

Lima Komoditas Tanaman Sayuran dan Buah–Buahan Semusim dengan Jumlah Produksi Terbesar di Kecamatan Tegineneng, 2022
Five Commodities of Seasonal Vegetables and Fruits with The Largest Production in Tegineneng Subdistrict, 2022



Sumber/Source: BPS, Statistik Pertanian Hortikultura SPH-SBS 2022
BPS-Statistics Indonesia, Agricultural Statistic for Horticulture SPH-SBS 2022

Gambar 5.2
Figures

Lima Komoditas Tanaman Sayuran dan Buah–Buahan Tahunan dengan Jumlah Produksi Terbesar di Kecamatan Tegineneng, 2019–2022
Five Commodities of Annual Vegetables and Fruits with The Largest Production in Tegineneng Subdistrict, 2019–2022



Sumber/Source: BPS, Statistik Pertanian Hortikultura SPH-BST 2022
BPS-Statistics Indonesia, Agricultural Statistic for Horticulture SPH-BST 2022

5.1 LUAS LAHAN LAND AREA

Tabel 5.1.1 **Luas Lahan menurut Desa dan Jenis Penggunaan Lahan di Kecamatan Tegineneng (ha), 2022**
Land Area by Village and Type of Land Use in Tegineneng Subdistrict (ha), 2022

Desa/Village	Pertanian Sawah/ Wetland	Pertanian Non-Sawah/ Non-Wetland	Non-Pertanian/ Non-Agricultural	Jumlah/ Total
(1)	(2)	(3)	(4)	(5)
1. Kresno Widodo	432,00	440,00	134,00	1 006,00
2. Gedung Gumanti	385,00	968,00	547,00	1 900,00
3. Kejadian	18,00	302,00	100,00	420,00
4. Bumiagung	173,00	384,93	162,07	720,00
5. Batang Hari Ogan	35,00	427,00	67,00	529,00
6. Rejoagung	206,00	494,00	385,00	1 085,00
7. Kota Agung	102,00	492,00	456,00	1 050,00
8. Negara Ratuwates	109,00	499,00	402,00	1 010,00
9. Gunung Sugih Baru	238,00	197,00	95,00	530,00
10. Margo Mulyo	449,07	133,00	106,93	689,00
11. Trimulyo	308,00	928,00	284,00	1 520,00
12. Sinar Jati	67,00	656,00	359,00	1 082,00
13. Margo Rejo	105,00	629,50	287,50	1 022,00
14. Gerning	165,00	829,50	505,50	1 500,00
15. Panca Bakti	106,00	272,00	75,00	453,00
16. Sriwedari	267,00	263,00	80,00	610,00
Kecamatan Tegineneng	3 165,07	7 914,93	4 046,00	15 126,00

Sumber/Source: Dinas Pertanian dan Tanaman Pangan Kabupaten Pesawaran
Agriculture and Food Crops Agency of Pesawaran Regency

Tabel
Table 5.1.2

Luas Lahan Pertanian Sawah menurut Desa dan Jenis Pengairan di Kecamatan Tegineneng (ha), 2022
Wetland Area by Village and Type of Irrigation in Tegineneng Subdistrict (ha), 2022

Desa/Village	Irigasi/Irrigation	Non Irigasi/ Non-Irrigation	Jumlah/ Total
(1)	(2)	(3)	(4)
1. Kresno Widodo	15,00	417,00	432,00
2. Gedung Gumanti	–	385,00	385,00
3. Kejadian	–	18,00	18,00
4. Bumiagung	–	173,00	173,00
5. Batang Hari Ogan	–	35,00	35,00
6. Rejoagung	23,00	183,00	206,00
7. Kota Agung	–	102,00	102,00
8. Negara Ratuwates	–	109,00	109,00
9. Gunung Sugih Baru	202,00	36,00	238,00
10. Margo Mulyo	–	449,07	449,07
11. Trimulyo	–	308,00	308,00
12. Sinar Jati	–	67,00	67,00
13. Margo Rejo	–	105,00	105,00
14. Gerning	–	165,00	165,00
15. Panca Bakti	–	106,00	106,00
16. Sriwedari	–	267,00	267,00
Kecamatan Tegineneng	240,00	2 925,07	3 165,07

Sumber/Source: Dinas Pertanian dan Tanaman Pangan Kabupaten Pesawaran
Agriculture and Food Crops Agency of Pesawaran Regency

Tabel
Table 5.1.3**Luas Lahan Pertanian Non Sawah menurut Desa dan Jenis Penggunaan Lahan di Kecamatan Tegineneng (ha), 2022**
Non-Wetland Area by Village and Type of Land Use in Tegineneng Subdistrict (ha), 2022

<i>Desa/Village</i>	<i>Tegal/Kebun/ Garden</i>	<i>Ladang/Huma/ Field</i>	<i>Perkebunan/ Estates</i>	<i>Hutan Rakyat/ People Forest</i>
(1)	(2)	(3)	(4)	(5)
1. Kresno Widodo	431,00	–	4,00	3,00
2. Gedung Gumanti	960,00	–	2,00	3,00
3. Kejadian	297,00	–	2,00	2,00
4. Bumiagung	378,93	–	2,00	2,00
5. Batang Hari Ogan	415,00	–	9,00	2,00
6. Rejoagung	486,00	–	6,00	–
7. Kota Agung	486,00	–	3,00	1,00
8. Negara Ratuwates	497,00	–	1,00	1,00
9. Gunung Sugih Baru	196,00	–	1,00	0,00
10. Margo Mulyo	130,00	–	2,00	0,00
11. Trimulyo	913,00	–	5,00	5,00
12. Sinar Jati	649,00	–	4,00	1,00
13. Margo Rejo	625,00	–	4,00	0,50
14. Gerning	811,00	–	16,00	1,50
15. Panca Bakti	269,00	–	2,00	1,00
16. Sriwedari	257,00	–	2,00	2,00
Kecamatan Tegineneng	7 800,93	–	65,00	25,00

Lanjutan Tabel/Continued Table 5.1.3

Desa/Village	Padang Rumput/ Grassland	Hutan Negara/ State Forest	Sementara Tidak Diusahakan/ Affording for a while	Lainnya (Tambak, Kolam, Empang, dll)/ Other (Dam, Dyke, etc.)	Jumlah/ Total
(1)	(6)	(7)	(8)	(9)	(10)
1. Kresno Widodo	1,00	–	1,00	–	440,00
2. Gedung Gumanti	1,00	–	2,00	–	968,00
3. Kejadian	–	–	1,00	–	302,00
4. Bumiagung	–	–	2,00	–	384,93
5. Batang Hari Ogan	–	–	1,00	–	427,00
6. Rejoagung	–	–	–	2,00	494,00
7. Kota Agung	–	–	2,00	–	492,00
8. Negara Ratuwates	–	–	–	–	499,00
9. Gunung Sugih Baru	–	–	–	–	197,00
10. Margo Mulyo	–	–	–	1,00	133,00
11. Trimulyo	1,00	–	3,00	1,00	928,00
12. Sinar Jati	1,00	–	1,00	–	656,00
13. Margo Rejo	–	–	–	–	629,50
14. Gerning	–	–	1,00	–	829,50
15. Panca Bakti	–	–	–	–	272,00
16. Sriwedari	1,00	–	1,00	–	263,00
Kecamatan Tegineneng	5,00	–	15,00	4,00	7 914,93

Sumber/Source: Dinas Pertanian dan Tanaman Pangan Kabupaten Pesawaran
Agriculture and Food Crops Agency of Pesawaran Regency

5.2 TANAMAN PANGAN

FOOD CROPS

Tabel 5.2.1 **Luas Panen (ha) dan Produksi Tanaman Pangan (ton) menurut Desa dan Jenis Tanaman di Kecamatan Tegineneng, 2022**
Harvested Area (ha) and Production (ton) of Food Crops by Village and Kind of Plant in Tegineneng Subdistrict, 2022

Desa/Village	Padi Sawah/Paddy Wetland		Padi Ladang/Paddy Non- Wetland	
	Luas Panen/ Harvest Area	Produksi/ Production	Luas Panen/ Harvest Area	Produksi/ Production
(1)	(2)	(3)	(4)	(5)
1. Kresno Widodo	831,36	4 646,55	–	–
2. Gedung Gumanti	718,26	4 014,40	1,00	5,59
3. Kejadian	50,27	280,95	–	–
4. Bumiagung	330,61	1 847,81	–	–
5. Batang Hari Ogan	83,14	464,65	–	–
6. Rejoagung	375,08	2 096,35	–	–
7. Kota Agung	180,29	1 007,65	–	–
8. Negara Ratuwates	174,97	977,94	–	–
9. Gunung Sugih Baru	561,65	3 139,12	–	–
10. Margo Mulyo	969,60	5 419,17	–	–
11. Trimulyo	619,17	3 460,60	–	–
12. Sinar Jati	144,04	805,04	–	–
13. Margo Rejo	196,24	1 096,80	–	–
14. Gerning	288,08	1 610,08	1,00	5,59
15. Panca Bakti	222,34	1 242,68	–	–
16. Sriwedari	585,82	3 274,20	–	–
Kecamatan Tegineneng	6 330,92	35 384,01	2,00	11,18

Lanjutan Tabel/Continued Table 5.2.1

Desa/Village	Jagung/Maize		Kedelai/Soybean	
	Luas Panen/ Harvest Area	Produksi/ Production	Luas Panen/ Harvest Area	Produksi/ Production
(1)	(6)	(7)	(8)	(9)
1. Kresno Widodo	799,00	4 410,48	7,00	10,43
2. Gedung Gumanti	888,00	4 901,76	7,00	10,43
3. Kejadian	674,00	3 720,48	–	–
4. Bumiagung	708,00	3 908,16	7,00	10,43
5. Batang Hari Ogan	602,00	3 323,04	–	–
6. Rejoagung	559,00	3 085,68	–	–
7. Kota Agung	445,00	2 456,40	–	–
8. Negara Ratuwates	488,00	2 693,76	–	–
9. Gunung Sugih Baru	444,00	2 450,88	–	–
10. Margo Mulyo	636,00	3 510,72	–	–
11. Trimulyo	991,00	5 470,32	–	–
12. Sinar Jati	655,00	3 615,60	7,00	10,43
13. Margo Rejo	512,00	2 826,24	7,00	10,43
14. Gerning	595,00	3 284,40	7,00	10,43
15. Panca Bakti	456,00	2 517,12	7,00	10,43
16. Sriwedari	483,00	2 666,16	7,00	10,43
Kecamatan Tegineng	9 935,00	54 841,20	56,00	83,44

Lanjutan Tabel/*Continued Table 5.2.1*

Desa/Village	Kacang Tanah/Peanut		Ubi Kayu/Cassava	
	Luas Panen/ Harvest Area	Produksi/ Production	Luas Panen/ Harvest Area	Produksi/ Production
(1)	(10)	(11)	(12)	(13)
1. Kresno Widodo	3,50	4,41	129,00	3 356,58
2. Gedung Gumanti	2,50	3,15	148,00	3 850,96
3. Kejadian	2,25	2,84	90,00	2 341,80
4. Bumiagung	1,50	1,89	107,00	2 784,14
5. Batang Hari Ogan	2,50	3,15	111,00	2 888,22
6. Rejoagung	2,00	2,52	122,00	3 174,44
7. Kota Agung	1,75	2,21	47,00	1 222,94
8. Negara Ratuwates	1,75	2,21	71,00	1 847,42
9. Gunung Sugih Baru	1,75	2,21	107,00	2 784,14
10. Margo Mulyo	2,50	3,15	100,00	2 602,00
11. Trimulyo	5,00	6,30	135,00	3 512,70
12. Sinar Jati	1,75	2,21	78,00	2 029,56
13. Margo Rejo	3,00	3,78	61,00	1 587,22
14. Gerning	4,00	5,04	74,00	1 925,48
15. Panca Bakti	2,00	2,52	67,00	1 743,34
16. Sriwedari	3,25	4,10	81,00	2 107,62
Kecamatan Tegineneng	41,00	51,66	1 528,00	39 758,56

Lanjutan Tabel/Continued Table 5.2.1

Desa/Village	Ubi Jalar/Sweet Potato	
	Luas Panen/ Harvest Area	Produksi/Production
(1)	(14)	(15)
1. Kresno Widodo	0,50	9,57
2. Gedung Gumanti	0,25	4,79
3. Kejadian	1,25	23,93
4. Bumiagung	0,25	4,79
5. Batang Hari Ogan	1,00	19,14
6. Rejoagung	0,25	4,79
7. Kota Agung	1,00	19,14
8. Negara Ratuwates	0,25	4,79
9. Gunung Sugih Baru	1,75	33,50
10. Margo Mulyo	0,50	9,57
11. Trimulyo	1,25	23,93
12. Sinar Jati	0,00	0,00
13. Margo Rejo	0,50	9,57
14. Gerning	1,25	23,93
15. Panca Bakti	1,25	23,93
16. Sriwedari	0,75	14,36
Kecamatan Tegineneng	12,00	229,68

Sumber/Source: Dinas Pertanian dan Tanaman Pangan Kabupaten Pesawaran
Agriculture and Food Crops Agency of Pesawaran Regency

5.3 HORTIKULTURA HORTICULTURE

Tabel 5.3.1 Luas Panen Tanaman Sayuran dan Buah–Buahan Semusim menurut Jenis Tanaman di Kecamatan Tegineneng , 2019–2022
Harvested Area of Seasonal Vegetables and Fruits by Kind of Plant in Tegineneng Subdistrict, 2019–2022

Jenis Tanaman Kind of Plants	Satuan Unit	2019	2020	2021	2022*
(1)	(2)	(3)	(4)	(5)	(6)
Bawang Daun/ Scallion	ha	–	–	1	–
Bawang Merah/ Shallots	ha	1	8	–	–
Bawang Putih/ Garlic	ha	–	–	–	–
Bayam/ Spinach	ha	15	8	9	11
Buncis/ string bean	ha	2	–	1	–
Cabai Besar/ TW/ Teropong/ Chili/ Big chili	ha	499	420	395	118
Cabai Keriting/ Chili/Curlly chili	ha	2	–
Cabai Rawit/ Chili/Cayenne Pepper	ha	59	17	31	29
Jamur/ Mushrooms	m ²	–	–	1	9
Kacang Panjang/ Long Beans	ha	9	8	15	12
Kangkung/ Water Spinach	ha	14	8	9	14
Kembang Kol/ Cauliflower	ha	–	–	–	–
Kentang/ Potato	ha	–	–	–	–
Ketimun/ Cucumber	ha	6	10	13	12
Kubis/ Cabbage	ha	–	–	–	–
Labu Siam/ Chayote	ha	–	–	–	–
Melon/ Melon	ha	–	–	3	4
Paprika/ Bell Pepper	ha	–	–	–	–
Petsai/Sawi/ Chinese Cabbage/mustard green	ha	–	–	2	3
Semangka/ Water Melon	ha	–	–	5	5
Stroberi/ Strawberry	ha	–	–	–	–
Terung/ Eggplant	ha	10	27	40	43
Tomat/ Tomato	ha	10	23	45	37
Wortel/ Carrot	ha	–	–	–	–

Catatan/Note: *Angka Sementara (ASEM)/ Preliminary Figures

Sumber/Source: BPS, Statistik Pertanian Hortikultura SPH-SBS 2022

BPS-Statistics Indonesia, Agricultural Statistic for Horticulture SPH-SBS 2022

Tabel
Table 5.3.2

Produksi Tanaman Sayuran dan Buah–Buahan Semusim Menurut Jenis Tanaman di Kecamatan Tegineneng, 2019–2022
Production of Seasonal Vegetables and Fruits by Kind of Plant in Tegineneng Subdistrict, 2019–2022

Jenis Tanaman <i>Kind of Plants</i>	Satuan <i>Unit</i>	2019	2020	2021	2022*
(1)	(2)	(3)	(4)	(5)	(6)
Bawang Daun/ <i>Scallion</i>	kw/ qui	–	–	80	–
Bawang Merah/ <i>Shallots</i>	kw/ qui	60	74	–	–
Bawang Putih/ <i>Garlic</i>	kw/ qui	–	–	–	–
Bayam/ <i>Spinach</i>	kw/ qui	1 271	400	450	491
Buncis/ <i>string bean</i>	kw/ qui	2	–	125	–
Cabai Besar/ TW/ Teropong/ <i>Chili/ Big chili</i>	kw/ qui	44 400	11 351	27 650	8 311
Cabai Keriting/ <i>Chili/Curlly chili</i>	kw/ qui	120	–
Cabai Rawit/ <i>Chili/Cayenne Pepper</i>	kw/ qui	4 835	705	1 860	1 749
Jamur/ <i>Mushrooms</i>	kg	–	–	1	10
Kacang Panjang/ <i>Long Beans</i>	kw/ qui	730	640	790	632
Kangkung/ <i>Water Spinach</i>	kw/ qui	1 062	400	450	636
Kembang Kol/ <i>Cauliflower</i>	kw/ qui	–	–	–	–
Kentang/ <i>Potato</i>	kw/ qui	–	–	–	–
Ketimun/ <i>Cucumber</i>	kw/ qui	376	1 375	3 008	1 073
Kubis/ <i>Cabbage</i>	kw/ qui	–	–	–	–
Labu Siam/ <i>Chayote</i>	kw/ qui	–	–	–	–
Melon/ <i>Melon</i>	kw/ qui	–	–	266	500
Paprika/ <i>Bell Pepper</i>	kw/ qui	–	–	–	–
Petsai/Sawi/ <i>Chinese Cabbage/mustard green</i>	kw/ qui	–	–	200	90
Semangka/ <i>Water Melon</i>	kw/ qui	–	–	745	565
Stroberi/ <i>Strawberry</i>	kw/ qui	–	–	–	–
Terung/ <i>Eggplant</i>	kw/ qui	610	931	6 866	1 940
Tomat/ <i>Tomato</i>	kw/ qui	700	685	1 645	1 725
Wortel/ <i>Carrot</i>	kw/ qui	–	–	–	–

Catatan/Note: *Angka Sementara (ASEM)/ *Preliminary Figures*

Sumber/Source: BPS, Statistik Pertanian Hortikultura SPH-SBS 2022

BPS-Statistics Indonesia, Agricultural Statistic for Horticulture SPH-SBS 2022

Tabel
Table 5.3.3**Luas Panen Tanaman Biofarmaka menurut Jenis Tanaman di Kecamatan Tegineneng, 2019–2022**
Harvested Area of Medicinal Plants by Kind of Plant in Tegineneng Subdistrict, 2019–2022

Jenis Tanaman <i>Kind of Plants</i>	Satuan <i>Unit</i>	2019	2020	2021	2022*
(1)	(2)	(3)	(4)	(5)	(6)
Jahe/ <i>Ginger</i>	m ²	–	–	–	3
Jeruk Nipis/ <i>Lime</i>	pohon/ <i>tree</i>	–	1
Kapulaga/ <i>Java Cardamom</i>	m ²	–	–	–	–
Kencur/ <i>East Indian Galangal</i>	m ²	–	–	–	2
Kunyit/ <i>Turmeric</i>	m ²	2	1	–	2
Laos/Lengkuas/ <i>Galanga</i>	m ²	1	–	–	1
Lempuyang/ <i>Zingiber Aromaticum</i>	m ²	–	–	–	–
Lidah Buaya/ <i>Aloevera</i>	m ²	–	–	–	–
Mahkota Dewa/ <i>Phaleria Macrocarpa</i>	pohon/ <i>tree</i>	–	–	–	–
Mengkudu/Pace/ <i>Indian Mulberry</i>	pohon/ <i>tree</i>	–	–	–	–
Sambiloto/ <i>King of Bitter</i>	m ²	–	–	–	–
Serai/ <i>Lemongrass</i>	m ²	–	4
Temuireng/ <i>Black Turmeric</i>	m ²	–	–	–	1
Temukunci/ <i>Chinese Keys</i>	m ²	–	–	–	1
Temulawak/ <i>Java Turmeric</i>	m ²	–	–	–	1

Catatan/Note: *Angka Sementara (ASEM)/ Preliminary Figures

Sumber/Source: BPS, Statistik Pertanian Hortikultura SPH-TBF 2022

BPS-Statistics Indonesia, Agricultural Statistic for Horticulture SPH-TBF 2022

Tabel 5.3.4 **Produksi Tanaman Biofarmaka menurut Jenis Tanaman di Kecamatan Tegineneng, 2019–2022**
Table 5.3.4 **Production of Medicinal Plants by Kind of Plant in Tegineneng Subdistrict, 2019–2022**

Jenis Tanaman <i>Kind of Plants</i>	Satuan <i>Unit</i>	2019	2020	2021	2022*
(1)	(2)	(3)	(4)	(5)	(6)
Jahe/ <i>Ginger</i>	kg	–	–	–	12
Jeruk Nipis/ <i>Lime</i>	kg	–	5
Kapulaga/ <i>Java Cardamom</i>	kg	–	–	–	–
Kencur/ <i>East Indian Galangal</i>	kg	–	–	–	6
Kunyit/ <i>Turmeric</i>	kg	14	4	–	8
Laos/Lengkuas/ <i>Galanga</i>	kg	12	–	–	4
Lempuyang/ <i>Zingiber Aromaticum</i>	kg	–	–	–	–
Lidah Buaya/ <i>Aloevera</i>	kg	–	–	–	–
Mahkota Dewa/ <i>Phaleria Macrocarpa</i>	kg	–	–	–	–
Mengkudu/ <i>Pace/Indian Mulberry</i>	kg	–	–	–	–
Sambiloto/ <i>King of Bitter</i>	kg	–	–	–	–
Serai/ <i>Lemongrass</i>	kg	–	13
Temuireng/ <i>Black Turmeric</i>	kg	–	–	–	4
Temukunci/ <i>Chinese Keys</i>	kg	–	–	–	2
Temulawak/ <i>Java Turmeric</i>	kg	–	–	–	4

Catatan/Note: *Angka Sementara (ASEM)/ Preliminary Figures

Sumber/Source: BPS, Statistik Pertanian Hortikultura SPH-TBF 2022

BPS-Statistics Indonesia, Agricultural Statistic for Horticulture SPH-TBF 2022

Tabel
Table 5.3.5

**Luas Panen Tanaman Hias menurut Jenis Tanaman di
Kecamatan Tegineneng, 2019–2022**
*Harvested Area of Ornamental Plants by Kind of Plant in
Tegineneng Subdistrict, 2019–2022*

Jenis Tanaman <i>Kind of Plants</i>	Satuan <i>Unit</i>	2019	2020	2021	2022*
(1)	(2)	(3)	(4)	(5)	(6)
Anggrek Pot/ <i>Orchid Potted Orchid</i>	m ²	–	–	–	–
Anggrek Potong/Cut <i>Orchid</i>	m ²	–	–
Anthurium Bunga/ <i>Flamingo Lily Flower</i>	m ²	–	–	–	–
Anthurium Daun/ <i>Anthurium</i>	m ²	–	–
Anyelir/ <i>Carnation</i>	m ²	–	–
Balanceng/ <i>Dieffenbacia</i>	m ²	–	–
Bromelia	m ²	–	–
Bugenvil	m ²	–	–
Dracaena/ <i>Dracaena</i>	m ²	–	–	–	–
Euphorbia/ <i>Euphorbia</i>	m ²	–	–
Gladiol	m ²	–	–
Hanjuang/ <i>Cordyline</i>	m ²	–	–	–	–
Herbras/ <i>Gerbera</i>	m ²	–	–	–	–
Kamboja Jepang/ <i>Adenium</i>	m ²	–	–
Keladi Hias/ <i>Caladium</i>	m ²	–	–
Krisan/ <i>Chrysantemum</i>	m ²	–	–	–	–
Mawar/ <i>Rose</i>	m ²	–	–	–	–
Melati/ <i>Jasmine</i>	m ²	–	–	–	–
Monstera/ <i>Monstera</i>	m ²	–	–
Pakis/ <i>Leather Leaf Fern</i>	m ²	–	–	–	–
Palem/ <i>Palm</i>	m ²	–	–	–	–
Pedang-Pedangan/ <i>Sansevieria</i>	m ²	–	–	–	–
Philodendron/ <i>Philodendron</i>	m ²	–	–	–	–
Pisang-Pisangan/ <i>Heliconia</i>	m ²	–	–	–	–
Puring/ <i>Croton</i>	m ²	–	–
Sedap Malam/ <i>Tuberose</i>	m ²	–	–	–	–
Soka/ <i>Ixora</i>	m ²	–	–	–	–
Sri Rejeki/ <i>Aglaonema</i>	m ²	–	–	–	–

Catatan/Note: *Angka Sementara (ASEM)/ *Preliminary Figures*

Sumber/Source: BPS, Statistik Pertanian Hortikultura SPH-TH 2022

BPS-Statistics Indonesia, Agricultural Statistic for Horticulture SPH-TH 2022

Tabel 5.3.6 **Produksi Tanaman Hias menurut Jenis Tanaman di Kecamatan Tegineneng, 2019-2022**
Production of Ornamental Plants by Kind of Plant in Tegineneng Subdistrict, 2019-2022

Jenis Tanaman Kind of Plants	Satuan Unit	2019	2020	2021	2022*
(1)	(2)	(3)	(4)	(5)	(6)
Anggrek Pot/ <i>Orchid Potted Orchid</i>	pohon/tree	–	–	–	–
Anggrek Potong/Cut <i>Orchid</i>	tangkai/ stalks	–	–
Anthurium Bunga/ <i>Flamingo Lily Flower</i>	tangkai/ stalks	–	–	–	–
Anthurium Daun/ <i>Anthurium</i>	pohon/tree	–	–
Anyelir/ <i>Carnation</i>	tangkai/ stalks	–	–
Balanceng/ <i>Dieffenbacia</i>	pohon/tree	–	–
Bromelia	pohon/tree	–	–
Bugenvil	pohon/tree	–	–
Dracaena/ <i>Dracaena</i>	pohon/tree	–	–	–	–
Euphorbia/ <i>Euphorbia</i>	pohon/tree	–	–
Gladiol	tangkai/ stalks	–	–
Hanjuang/ <i>Cordyline</i>	pohon/tree	–	–	–	–
Herbras/ <i>Gerbera</i>	tangkai/ stalks	–	–	–	–
Kamboja Jepang/ <i>Adenium</i>	pohon/tree	–	–
Keladi Hias/ <i>Caladium</i>	pohon/tree	–	–
Krisan/ <i>Chrysantemum</i>	tangkai/ stalks	–	–	–	–
Mawar/ <i>Rose</i>	tangkai/ stalks	–	–	–	–
Melati/ <i>Jasmine</i>	kg	–	–	–	–
Monstera/ <i>Monstera</i>	pohon/tree	–	–
Pakis/ <i>Leather Leaf Fern</i>	pohon/tree	–	–	–	–
Palem/ <i>Palm</i>	pohon/tree	–	–	–	–
Pedang-Pedangan/ <i>Sansevieria</i>	rumpun/ clumps	–	–	–	–
Philodendron/ <i>Philodendron</i>	pohon/tree	–	–	–	–
Pisang-Pisangan/ <i>Heliconia</i>	tangkai/ stalks	–	–	–	–
Puring/ <i>Croton</i>	pohon/tree	–	–
Sedap Malam/ <i>Tuberose</i>	tangkai/ stalks	–	–	–	–
Soka/ <i>Ixora</i>	pohon/tree	–	–	–	–
Sri Rejeki/ <i>Aglaonema</i>	pohon/tree	–	–	–	–

Catatan/Note: *Angka Sementara (ASEM)/ Preliminary Figures

Sumber/Source: BPS, Statistik Pertanian Hortikultura SPH-TH 2022

BPS-Statistics Indonesia, Agricultural Statistic for Horticulture SPH-TH 2022

Tabel
Table 5.3.7**Produksi Buah-Buahan dan Sayuran Tahunan menurut Jenis Tanaman di Kecamatan Tegineneng, 2019–2022**
Production of Annual Fruits and Vegetables by Kind of Plant in Tegineneng Subdistrict, 2019–2022

Jenis Tanaman Kind of Plants	Satuan Unit	2019	2020	2021	2022*
(1)	(2)	(3)	(4)	(5)	(6)
Alpukat/ <i>Avocado</i>	kw/ qui	248	32	776	910
Anggur/ <i>Grape</i>	kw/ qui	–	–	–	–
Apel/ <i>Apple</i>	kw/ qui	–	–	–	–
Belimbing/ <i>Star Fruit</i>	kw/ qui	–	–	17	17
Buah naga/ <i>Dragon fruit</i>	kw/ qui	–	–
Duku/Langsat/Kokosan	kw/ qui	2 754	107	461	461
Durian	kw/ qui	–	–	–	–
Jambu Air/ <i>Water Apple</i>	kw/ qui	650	–	–	–
Jambu Biji/ <i>Guava</i>	kw/ qui	922	–	–	–
Jengkol	kw/ qui	1 228	16	–	134
Jeruk Besar/ <i>Pomelo</i>	kw/ qui	124	–	–	–
Jeruk Siam/Keprok/ <i>Orange/Tangerine</i>	kw/ qui	32 000	76 635	106 380	106 380
Lemon	kw/ qui	–	–
Lengkeng/ <i>Dimocarpus Longan</i>	kw/ qui	–	–
Mangga/ <i>Mango</i>	kw/ qui	1 035	3 268	639	672
Manggis/ <i>Mangosteen</i>	kw/ qui	–	–	–	67
Melinjo/ <i>Gnetum</i>	kw/ qui	6 340	125	–	41
Nangka/Cempedak/ <i>Jackfruit</i>	kw/ qui	330	–	–	–
Nenas/ <i>Pineapple</i>	kw/ qui	180	–	–	42
Pepaya/ <i>Papaya</i>	kw/ qui	234	–	–	45
Petai/ <i>Twisted Cluster Bean</i>	kw/ qui	586	18	–	25
Pisang/ <i>Banana</i>	kw/ qui	226 573	176 324	148 933	151 072
Rambutan	kw/ qui	11 248	2 364	2 363	2 363
Salak/ <i>Snakefruit</i>	kw/ qui	76	9	34	34
Sawo/ <i>Sapodilla</i>	kw/ qui	768	69	148	172
Sirsak/ <i>Soursop</i>	kw/ qui	204	8	31	36
Sukun/ <i>Breadfruit</i>	kw/ qui	596	37	149	149

Catatan/Note: *Angka Sementara (ASEM)/ *Preliminary Figures*

Sumber/Source: BPS, Statistik Pertanian Hortikultura SPH-BST 2022

BPS-Statistics Indonesia, Agricultural Statistic for Horticulture SPH-BST 2022

**5.4 PERKEBUNAN
ESTATE**

Tabel 5.4.1 Luas Panen (ha) dan Produksi (ton) Tanaman Perkebunan menurut Jenis Tanaman di Kecamatan Tegineneng, 2022
Table 5.4.1 Harvest Area (ha) and Production (ton) of Estate Crops by Kind of Plant in Tegineneng Subdistrict, 2022

Desa/Village	Kelapa Sawit/Oil Palm		Kelapa/Coconut	
	Luas Panen/ Harvest Area	Produksi/ Production	Luas Panen/ Harvest Area	Produksi/ Production
(1)	(2)	(3)	(4)	(5)
1. Kresno Widodo	8,00	12,80	182,00	137,23
2. Gedung Gumanti	23,00	27,60	153,00	114,75
3. Kejadian	7,00	8,40	45,00	33,75
4. Bumiagung	5,00	6,25	138,00	111,78
5. Batang Hari Ogan	1,00	1,25	98,00	83,40
6. Rejoagung	8,00	10,40	87,00	65,25
7. Kota Agung	–	–	97,00	72,75
8. Negara Ratuwates	2,00	2,90	42,00	31,33
9. Gunung Sugih Baru	7,00	10,50	50,00	42,40
10. Margo Mulyo	35,00	38,50	103,00	77,25
11. Trimulyo	46,00	55,20	208,00	166,40
12. Sinar Jati	5,00	6,00	127,00	107,95
13. Margo Rejo	10,00	10,00	135,00	101,25
14. Gerning	43,00	60,20	182,00	149,24
15. Panca Bakti	55,00	66,00	62,00	54,00
16. Sriwedari	–	–	112,00	84,00
Kecamatan Tegineneng	255,00	316,00	1 821,00	1 432,73

Sumber/Source: Dinas Perkebunan dan Peternakan Kabupaten Pesawaran/Estate Crops and Livestock Agency of Pesawaran Regency

Lanjutan Tabel/*Continued Table* 5.4.1

Desa/Village	Karet/Rubber		Kopi/Coffee	
	Luas Panen/ Harvest Area	Produksi/ Production	Luas Panen/ Harvest Area	Produksi/ Production
(1)	(6)	(7)	(8)	(9)
1. Kresno Widodo	7,50	6,32	7,00	3,15
2. Gedung Gumanti	21,00	17,69	4,00	2,05
3. Kejadian	4,00	3,37	1,00	0,45
4. Bumiagung	6,50	5,48	7,00	3,15
5. Batang Hari Ogan	19,00	16,00	8,00	3,60
6. Rejoagung	7,00	5,90	2,50	1,13
7. Kota Agung	1,00	0,84	1,50	0,68
8. Negara Ratuwates	8,00	6,74	–	–
9. Gunung Sugih Baru	3,00	2,53	1,00	0,45
10. Margo Mulyo	2,00	1,68	2,00	0,90
11. Trimulyo	71,00	59,80	8,00	3,60
12. Sinar Jati	8,00	6,74	8,00	3,60
13. Margo Rejo	3,00	2,53	7,00	3,15
14. Gerning	13,00	10,95	8,00	3,60
15. Panca Bakti	–	–	4,00	1,80
16. Sriwedari	8,00	6,74	1,00	0,45
Kecamatan Tegineneng	182,00	153,30	70,00	31,75

Lanjutan Tabel/Continued Table 5.4.1

Desa/Village	Kakao/Cocoa		Tembakau/Tobacco	
	Luas Panen/ Harvest Area	Produksi/ Production	Luas Panen/ Harvest Area	Produksi/ Production
(1)	(10)	(11)	(12)	(13)
1. Kresno Widodo	42,00	43,12	1,50	1,48
2. Gedung Gumanti	24,00	26,03	0,50	0,49
3. Kejadian	2,00	3,54	–	–
4. Bumiagung	3,00	3,14	–	–
5. Batang Hari Ogan	9,00	9,80	–	–
6. Rejoagung	6,00	6,37	0,50	0,49
7. Kota Agung	9,00	9,87	–	–
8. Negara Ratuwates	2,00	2,22	–	–
9. Gunung Sugih Baru	9,00	9,83	–	–
10. Margo Mulyo	9,00	10,86	–	–
11. Trimulyo	3,00	3,54	10,00	9,89
12. Sinar Jati	5,00	5,31	1,50	1,48
13. Margo Rejo	8,00	9,45	2,00	1,97
14. Gerning	8,00	7,51	9,00	8,91
15. Panca Bakti	7,00	7,69	–	–
16. Sriwedari	9,00	11,78	–	–
Kecamatan Tegineneng	155,00	170,05	25,00	24,72

Sumber/Source: Dinas Perkebunan dan Peternakan Kabupaten Pesawaran/Estate Crops and Livestock Agency of Pesawaran Regency

5.5 PETERNAKAN LIVESTOCK

Tabel 5.5.1 Populasi Ternak menurut Jenis Ternak dan Desa di Kecamatan Tegineneng, 2022
Livestock Population by Kind of Livestock and Villages in Tegineneng Subdistrict, 2022

Desa/Village	Sapi Potong/ Beef Cattle	Kerbau/ Buffalo	Komba/Domba/ Goat/Sheep	Babi/Pig
(1)	(2)	(3)	(4)	(5)
1. Kresno Widodo	625	2	662	–
2. Gedung Gumanti	981	8	646	–
3. Kejadian	618	4	461	–
4. Bumiagung	446	5	327	–
5. Batang Hari Ogan	–	15	94	–
6. Rejoagung	97	4	152	–
7. Kota Agung	86	5	210	–
8. Negara Ratuwates	185	3	246	–
9. Gunung Sugih Baru	104	9	376	–
10. Margo Mulyo	534	3	247	–
11. Trimulyo	471	3	323	–
12. Sinar Jati	119	6	498	–
13. Margo Rejo	910	7	978	–
14. Gerning	584	5	942	–
15. Panca Bakti	408	6	349	–
16. Sriwedari	606	2	418	–
Kecamatan Tegineneng	6 774	87	6 929	–

Sumber/Source: Dinas Perkebunan dan Peternakan Kabupaten Pesawaran/*Estate Crops and Livestock Agency of Pesawaran Regency*

Tabel 5.5.2 **Populasi Unggas menurut Jenis Unggas dan Desa di Kecamatan Tegineneng, 2022**
Table 5.5.2 **Poultry Population by Kind of Poultry and Villages in Tegineneng Subdistrict, 2022**

Desa/Village	Ayam Pedaging/ Broiler	Ayam Petelur/ Layer	Itik/Itik Manila/ Duck/Muscovy Duck
(1)	(2)	(3)	(4)
1. Kresno Widodo	10 754	706	211
2. Gedung Gumanti	12 845	879	263
3. Kejadian	51 378	3 518	876
4. Bumiagung	33 421	2 287	685
5. Batang Hari Ogan	7 707	528	158
6. Rejoagung	5 138	312	105
7. Kota Agung	12 765	792	237
8. Negara Ratuwates	38 534	2 638	790
9. Gunung Sugih Baru	8 991	616	185
10. Margo Mulyo	3 853	264	79
11. Trimulyo	6 422	454	132
12. Sinar Jati	17 982	1 398	368
13. Margo Rejo	15 419	1 245	316
14. Gerning	14 324	967	290
15. Panca Bakti	8 990	616	185
16. Sriwedari	10 389	734	211
Kecamatan Tegineneng	258 912	17 954	5 091

Sumber/Source: Dinas Perkebunan dan Peternakan Kabupaten Pesawaran/Estate Crops and Livestock Agency of Pesawaran Regency

Tabel
Table 5.5.3**Jumlah Pemotongan Ternak/Unggas Tercatat menurut
Jenis Ternak/Unggas di Kecamatan Tegineneng, 2022**
**Number of Slaughters of Livestock/Poultry Recorded by Kind
of Livestock/Poultry in Tegineneng Subdistrict, 2022**

Jenis Ternak/Unggas <i>Kind of Livestock/Poultry</i>	Jumlah Pemotongan Ternak/Unggas <i>Number of Slaughters of Livestock/Poultry</i>
(1)	(2)
Ternak/Livestock:	
Sapi Potong/ <i>Beef Cattle</i>	219
Kerbau/ <i>Buffalo</i>	–
Kambing/Domba/ <i>Goat/Sheep</i>	235
Babi/ <i>Pig</i>	–
Unggas/Poultry:	
Ayam Pedaging/ <i>Broiler</i>	251 145
Ayam Petelur/ <i>Layer</i>	5 224
Itik/Itik Manila/ <i>Duck/Muscovy Duck</i>	2 837

Sumber/Source: Dinas Perkebunan dan Peternakan Kabupaten Pesawaran/*Estate Crops and Livestock Agency of Pesawaran Regency*

Tabel 5.5.4 **Produksi Daging dan Telur menurut Jenis Ternak/Unggas di Kecamatan Tegineneng (kg), 2022**
Table 5.5.4 **Flesh and Egg Production by Kind of Livestock/Poultry in Tegineneng Subdistrict (kg), 2022**

Jenis Ternak/Unggas Kind of Livestock/Poultry	Produksi Daging Flesh Production	Produksi Telur Egg Production
(1)	(2)	(3)
Ternak/Livestock:		
Sapi Potong/Beef Cattle	51 993	
Kerbau/Buffalo	–	
Kambing/Domba/Goat/Sheep	5 199	
Babi/Pig	–	
Unggas/Poultry:		
Ayam Pedaging/Broiler	294 493	–
Ayam Petelur/Layer	6 475	65 090
Ayam Kampung/Native Chicken	–	141 055
Itik/Itik Manila/Duck/Muscovy Duck	2 965	23 779

Sumber/Source: Dinas Perkebunan dan Peternakan Kabupaten Pesawaran/Estate Crops and Livestock Agency of Pesawaran Regency



ST 2023

BerAKHLAK

Berorientasi Pelayanan Akuntabel Kompeten
Harmonis Loyal Adaptif Kolaboratif

DATA
MENCERDASKAN BANGSA
— *Enlighten The Nation* —



**BADAN PUSAT STATISTIK
KABUPATEN PESAWARAN**

BPS-Statistics Pesawaran Regency

Jl. Ahmad Yani No. 119, Gedong Tataan, Pesawaran, Lampung, 36366

Telp. 0721-94711, website: <https://pesawarankab.bps.go.id>

Email: bps1809@bps.go.id, Whatsapp: 0811-602-1809