



KECAMATAN
KUTA RAJA
DALAM ANGKA

2023





KECAMATAN

KUTA RAJA

DALAM ANGKA

2023

KECAMATAN KUTA RAJA DALAM ANGKA
Kuta Raja Subdistrict in Figures
2023

ISSN: -

No. Publikasi/*Publication Number*: 11710.2315

Katalog /*Catalog*: 1102001.1171031

Ukuran Buku/*Book Size*: 14,8 cm x 21 cm

Jumlah Halaman/*Number of Pages* : xxix + 93 hal/*pages*

Naskah/*Manuscript*:

BPS Kota Banda Aceh

BPS-Statistics of Banda Aceh Municipality

Penyunting/*Editor*:

BPS Kota Banda Aceh

BPS-Statistics of Banda Aceh Municipality

Desain Kover/*Cover Design*:

BPS Kota Banda Aceh

BPS-Statistics of Banda Aceh Municipality

Ilustrasi Kover/*Cover Illustration*:

Laut Gp. Jawa

Tugu Kuta Raja

Diterbitkan oleh/*Published by*:

©BPS Kota Banda Aceh/*BPS-Statistics of Banda Aceh Municipality*

Dicetak oleh/*Printed by*:

CV. Norif

Dilarang mengumumkan, mendistribusikan, mengomunikasikan, dan/atau menggandakan sebagian atau seluruh isi buku ini untuk tujuan komersil tanpa izin tertulis dari Badan Pusat Statistik Kota Banda Aceh.

Prohibited to announce, distribute, communicate, and/or copy part or all of this book for commercial purpose without permission from BPS-Statistics Indonesia of Banda Aceh Municipality.

TIM PENYUSUN/TEAM MEMBERS

Pengarah/Director

Mughlisuddin, SE

Penanggung Jawab/Persons in Charge

Rochadi, SST

Penyunting/Editors

Mei Dina Marfuati, S.Tr.Stat

Pengolah Data dan Penulis Naskah/Data Processor and Writers

Kesuma Millati, S.Stat

Penata Letak/Layout Designers

Kesuma Millati, S.Stat

<https://bandacehkuibps.id>

KONTRIBUTOR DATA/DATA CONTRIBUTORS

1. Kementerian Agama/*Ministry of Religious Affair*
2. Kementerian Pendidikan dan Kebudayaan/*Ministry of Education and Culture*
3. Badan Meteorologi Klimatologi dan Geofisika/*Meteorological, Climatology, and Geophysical Agency*
4. Badan Pusat Statistik/*BPS-Statistics Indonesia*
5. BPS, Pendataan Potensi Desa (Podes) 2021/*BPS-Statistics Indonesia, Village Potential Data Collecting 2021*
6. Kantor Camat/*Subdistrict Office*
7. Komando Rayon Militer/*Military District Command*
8. Kepolisian Sektor/*Sektor Sector Police*
9. Kantor Keuchik/*Village Office*
10. Dinas Pemberdayaan Masyarakat dan Gampong Kota Banda Aceh/*Community and Village Empowerment Service of Banda Aceh Municipality*
11. Dinas Kependudukan dan Pencatatan Sipil Kota Banda Aceh/*Population and Civil Registration Service of Banda Aceh Municipality*
12. BPS, Statistik Pertanian Hortikultura SPH-SBS/*BPS-Statistics Indonesia, Agricultural Statistic for Horticulture SPH-SBS*
13. Dinas Pangan, Pertanian, Kelautan, dan Perikanan Kota Banda Aceh/*Food, Agriculture, Marine, and Fishery Service of Banda Aceh Municipality*

PETA WILAYAH KECAMATAN KUTA RAJA
MAP OF KUTA RAJA SUBDISTRICT



KEPALA BPS KOTA BANDA ACEH
CHIEF STATISTICIAN OF BANDA ACEH MUNICIPALITY



MUGHLISUDDIN, SE



KATA PENGANTAR

Publikasi “Kecamatan Kuta Raja Dalam Angka Tahun 2023” ini merupakan publikasi rutin tahunan Badan Pusat Statistik Kota Banda Aceh. Selain sebagai dasar evaluasi dan perencanaan pembangunan, publikasi ini menyajikan capaian hasil pembangunan dan keadaan sosial ekonomi penduduk Kecamatan Kuta Raja pada tahun 2022.

Data yang ditampilkan dalam publikasi ini dihimpun oleh Koordinator Statistik Kecamatan dari berbagai instansi, baik kecamatan maupun pemerintah kota termasuk data statistik yang dihasilkan oleh Badan Pusat Statistik Kota Banda Aceh.

Akhirnya kepada semua pihak yang telah membantu dan bekerjasama hingga terbitnya publikasi ini, kami ucapkan terima kasih dan semoga bermanfaat bagi kita semua.

Banda Aceh , September 2023
Kepala BPS
Kota Banda Aceh


MUGHLISUDDIN, SE



PREFACE

The publication of “Kuta Raja Subdistrict in Figures in 2023” is an annual publication of the Central Bureau of Statistics of Banda Aceh City. Aside from being a basis for evaluation and development planning, this publication presents the achievements of development results and the socio-economic conditions of the residents of Kuta Raja District in 2022.

The data presented in this publication was compiled by the District Statistics Coordinator from various agencies, both sub-district and city governments, including statistical data produced by the Central Bureau of Statistics of Banda Aceh City.

Finally, to all those who have helped and cooperated until the publication of this publication, we thank you and hope it will be useful for all of us.

*Banda Aceh , September 2023
Chief Statistician of
Banda Aceh Municipality*

MUGHLISUDDIN, SE

DAFTAR ISI/CONTENTS

	Halaman <i>Page</i>
Kata Pengantar.....	xiii
Preface.....	xiv
Daftar Isi/ Contents	xv
Daftar Tabel/ List of Tables	xvii
Penjelasan Umum/ Explanatory Notes	xxvi
Daftar Singkatan/ List of Abbreviation	xxviii
1. Geografi dan Iklim/ <i>Geography and Climate</i>	1
2. Pemerintahan/ <i>Government</i>	7
3. Penduduk/ <i>Population</i>	25
4. Sosial dan Kesejahteraan Rakyat/ <i>Social and Welfare</i>	35
5. Pertanian/ <i>Agriculture</i>	67
6. Pariwisata, Transportasi, dan Komunikasi/ <i>Tourism, Transportation, and Communication</i>	79
7. Perbankan, Koperasi, dan Perdagangan/ <i>Banking, Cooperative, and Trade</i>	87

DAFTAR TABEL/LIST OF TABLES

	Halaman Page
1. GEOGRAFI DAN IKLIM/GEOGRAPHY AND CLIMATE	
1.1 KEADAAN GEOGRAFI GEOGRAPHY CONDITION	
1.1.1 Luas Daerah Menurut Desa/Kelurahan di Kecamatan Kuta Raja, 2021 <i>Total Area by Villages/Kelurahan in Kuta Raja Subdistrict, 2021.....</i>	3
1.1.2 Jarak ke Ibukota Kecamatan dan Ibukota Kabupaten/Kota Menurut Gampong di Kecamatan Kuta Raja (km), 2021 <i>Distance to the Subdistrict Capital and Regency/Municipal Capital by Villages in Kuta Raja Subdistrict (km), 2021</i>	4
2. PEMERINTAHAN/GOVERNMENT	
2.1 WILAYAH ADMINISTRATIF ADMINISTRATIVE AREA	
2.1.1 Status Daerah Menurut Gampong di Kecamatan Kuta Raja, 2022 <i>Regional Status by Village in Kuta Raja Subdistrict, 2022</i>	7
2.1.2 Nama Mukim, Gampong, dan Dusun di Kecamatan Kuta Raja, 2022 <i>Names of Mukim, Village, and Dusun in Kuta Raja Subdistrict, 2022 ...</i>	8
2.2 SUMBER DAYA MANUSIA HUMAN RESOURCES	
2.2.1 Nama Camat, Pendidikan, dan Masa Jabatan di Kecamatan Kuta Raja Sejak Tahun 1985 – 2022 <i>Name of Subdistrict Head, Education, and Term of Office in Kuta Raja Subdistrict Since 1985 – 2022.....</i>	10
2.2.2 Daftar Pegawai pada Sekretariat Kecamatan Kuta Raja Menurut Jabatan dan Pangkat Tahun 2022 <i>List of Employees at the Kuta Raja District Secretariat by Position and Rank in 2022</i>	11
2.2.3 Petugas Bintara Pembina Desa (Babinsa) Menurut Gampong di Kecamatan Kuta Raja, 2022 <i>Village Advisory Officer (Babinsa) According to Gampong in Kuta Raja District, 2022</i>	12

2.2.4	Petugas Bhayangkara Pembina Keamanan dan Ketertiban Masyarakat (Bhabinkamtibmas) Menurut Gampong di Kecamatan Kuta Raja, 2022 <i>Bhayangkara Officer for Community Security and Order (Bhabinkamtibmas) According to Gampong in Kuta Raja District, 2022</i>	13
2.2.5	Nama Keuchik dan Pendidikan yang Ditamatkan Menurut Gampong di Kecamatan Kuta Raja, 2022 <i>Name of Keuchik and Education Completed by Gampong in Kuta Raja Subdistrict, 2022</i>	14
2.2.6	Jumlah Aparat Gampong di Kecamatan Kuta Raja, 2021 <i>Number of Gampong Officials in Kuta Raja Subdistrict, 2021</i>	15
2.2.7	Keberadaan Badan Musyawarah Gampong dan Jumlah Kegiatan Musyawarah Menurut Gampong di Kecamatan Kuta Raja, 2021 <i>Existence of Village Consultative Body and Number of Deliberation Activities by Village in Kuta Raja Subdistrict, 2021</i>	17
2.2.8	Keberadaan Fasilitas Pemerintahan di Dalam Kecamatan Kuta Raja, 2021 <i>Existence of Government Facilities in Kuta Raja Subdistrict, 2021</i>	18
2.2.9	Jumlah Badan Usaha Milik Desa (BUMDes) dan Pasar Desa Menurut Gampong di Kecamatan Kuta Raja, 2021 <i>Number of Village Owned Enterprises (BUMDes) and Village Markets by Gampong in Kuta Raja Subdistrict, 2021</i>	19
2.2.10	Target dan Realisasi APBG Menurut Gampong di Kecamatan Kuta Raja, 2022 <i>APBG Targets and Realization by Gampong in Kuta Raja Subdistrict, 2022</i>	20
3.	PENDUDUK/POPULATION	
3.1	Penduduk, Distribusi Persentase Penduduk, Kepadatan Penduduk, Rasio Jenis Kelamin Penduduk Menurut Gampong di Kecamatan Kuta Raja, 2022 <i>Population, Percentage Distribution of Population, Population Density, and Population Sex Ratio by Villages in Kuta Raja Subdistrict, 2022</i>	23

	Halaman Page	
3.2	Jumlah Penduduk Menurut Kelompok Umur dan Jenis Kelamin di Kecamatan Kuta Raja, 2022 <i>Population by Age Groups and Sex in Kuta Raja Subdistrict, 2022</i>	25
3.3	Sebaran Penduduk dan Luas Wilayah Menurut Gampong dalam Kecamatan Kuta Raja, 2022 <i>Distribution of Population and Area by Village in Kuta Raja Subdistrict, 2022</i>	26
3.4	Jumlah Bayi Lahir yang Memperoleh Akte Kelahiran Menurut Gampong di Kecamatan Kuta Raja, 2022 <i>Number of Babies Born with Birth Certificates by Gampong in Kuta Raja Subdistrict, 2022</i>	27
3.5	Jumlah Penduduk yang Meninggal Menurut Gampong di Kecamatan Kuta Raja, 2022 <i>Number of People Who Died by Gampong in Kuta Raja Subdistrict, 2022</i>	28
4.	SOSIAL DAN KESEJAHTERAAN RAKYAT/SOCIAL AND WELFARE	
4.1	PENDIDIKAN EDUCATION	
4.1.1	Banyaknya Gampong yang Memiliki Fasilitas Sekolah Menurut Tingkat Pendidikan di Kecamatan Kuta Raja, 2019–2021 <i>Number of Villages Having Educational Facilities by Educational Level in Kuta Raja Subdistrict, 2019–2021</i>	33
4.1.2	Jumlah Sekolah Menurut Tingkat Pendidikan di Kecamatan Kuta Raja, 2021/2022 dan 2022/2023 <i>Number of Schools by Educational Level in Kuta Raja Subdistrict, 2021/2022 and 2022/2023</i>	34
4.1.3	Jumlah Guru Menurut Tingkat Pendidikan di Kecamatan Kuta Raja, 2021/2022 dan 2022/2023 <i>Number of Teachers by Educational Level in Kuta Raja Subdistrict, 2021/2022 and 2022/2023</i>	35
4.1.4	Jumlah Murid Menurut Tingkat Pendidikan di Kecamatan Kuta Raja, 2021/2022 dan 2022/2023 <i>Number of Pupils by Educational Level in Kuta Raja Subdistrict, 2021/2022 and 2022/2023</i>	36

4.1.5	Banyaknya Sekolah Dasar (SD) Menurut Gampong di Kecamatan Kuta Raja, 2021/2022 <i>Number of Elementary Schools (SD) by Villages in Kuta Raja Subdistrict, 2021/2022.....</i>	37
4.1.6	Banyaknya Madrasah Ibtidaiyah (MI) Menurut Gampong di Kecamatan Kuta Raja, 2021/2022 <i>Number of Madrasah Ibtidaiyah (MI) by Villages in Kuta Raja Subdistrict, 2021/2022.....</i>	38
4.1.7	Banyaknya Sekolah Menengah Pertama (SMP) Menurut Gampong di Kecamatan Kuta Raja, 2021/2022 <i>Number of Junior High School (SD) by Villages in Kuta Raja Subdistrict, 2021/2022.....</i>	39
4.1.8	Banyaknya Madrasah Tsanawiyah (MTs) Menurut Gampong di Kecamatan Kuta Raja, 2021/2022 <i>Number of Madrasah Tsanawiyah (MTs) by Villages in Kuta Raja Subdistrict, 2021/2022.....</i>	40
4.1.9	Banyaknya Sekolah Menengah Atas (SMA) Menurut Gampong di Kecamatan Kuta Raja, 2021/2022 <i>Number of Senior High School (SMA) by Villages in Kuta Raja Subdistrict, 2021/2022.....</i>	41
4.1.10	Banyaknya Madrasah Aliyah (MA) Menurut Gampong di Kecamatan Kuta Raja, 2021/2022 <i>Number of Madrasah Aliyah (MA) by Villages in Kuta Raja Subdistrict, 2021/2022.....</i>	42
4.1.11	Banyaknya Sekolah Menengah Kejuruan (SMK) Menurut Gampong di Kecamatan Kuta Raja, 2021/2022 <i>Number of Vocational High Schools (SMK) by Villages in Kuta Raja Subdistrict, 2021/2022.....</i>	43
4.1.12	Banyaknya Akademi/Perguruan Tinggi Menurut Gampong di Kecamatan Kuta Raja, 2021/2022 <i>Number of Academy/College by Villages in Kuta Raja Subdistrict, 2021/2022.....</i>	44

**4.2 KESEHATAN
HEALTH**

4.2.1 Banyaknya Gampong yang Memiliki Sarana Kesehatan Menurut Jenis Sarana Kesehatan di Kecamatan Kuta Raja, 2019–2021
Number of Villages Health Facilities by Type of Health Facilities in Kuta Raja Subdistrict, 2019–2021 45

4.2.2 Banyaknya Warga Penderita Kekurangan Gizi Menurut Gampong di Kecamatan Kuta Raja, 2020
Number of People with Malnutrition by Villages/Kelurahan in Kuta Raja Subdistrict, 2020..... 46

**4.3 PERUMAHAN DAN LINGKUNGAN
HOUSING AND ENVIRONMENT**

4.3.1 Banyaknya Gampong Menurut Sumber Air Minum Sebagian Besar Keluarga di Kecamatan Kuta Raja, 2019–2021
Number of Villages by Drinking Water Source of Majority Family in Kuta Raja Subdistrict, 2019–2021 47

4.3.2 Banyaknya Keluarga Menurut Gampong dan Jenis Pengguna Listrik di Kecamatan Kuta Raja, 2021
Number of Family by Villages and Type of Electricity Consumer in Kuta Raja Subdistrict, 2021..... 48

4.3.3 Banyaknya Gampong Menurut Sumber Penerangan Jalan Utama Gampong di Kecamatan Kuta Raja, 2019–2021
Number of Villages by Source of Villages/Kelurahan's Main Street Illumination in Kuta Raja Subdistrict, 2019–2021..... 49

4.3.4 Banyaknya Gampong Menurut Penggunaan Fasilitas Tempat Buang Air Besar Sebagian Besar Keluarga di Kecamatan Kuta Raja, 2019–2021
Number of Villages by Toilet Facility Used by Majority Family in Kuta Raja Subdistrict, 2019–2021 50

4.3.5 Banyaknya Gampong Menurut Jenis Bahan Bakar untuk Memasak yang Digunakan Sebagian Besar Keluarga di Kecamatan Kuta Raja, 2021
Number of Villages by Type of Cooking Fuel Used by Majority Family in Kuta Raja Subdistrict, 2021..... 51

4.4 AGAMA DAN SOSIAL LAINNYA

RELIGION AND OTHER SOCIAL AFFAIRS

4.4.1	Jumlah Tempat Peribadatan Menurut Gampong di Kecamatan Kuta Raja, 2021 <i>Number of Worship Places by Villages in Kuta Raja Subdistrict, 2021 ..</i>	52
4.4.2	Banyaknya Kejadian Bencana Alam Menurut Gampong dan Jenis Bencana Alam di Kecamatan Kuta Raja, 2020 <i>Number of Natural Disaster Events by Villages and Type of Natural Disaster in Kuta Raja Subdistrict, 2020</i>	53
4.4.3	Banyaknya Korban Jiwa Akibat Bencana Alam Menurut Gampong dan Jenis Bencana Alam di Kecamatan Kuta Raja, 2020 <i>Number of Fatalities Due to Natural Disasters by Villages and Type of Natural Disaster in Meraxa Subdistrict, 2020</i>	56
4.4.4	Keberadaan Fasilitas/Upaya Antisipasi/Mitigasi Bencana Alam Menurut Gampong di Kecamatan Kuta Raja, 2021 <i>Existence of Facilities/Efforts for Anticipation/Mitigation of Natural Disasters by Villages by Villages in Kuta Raja Subdistrict, 2021</i>	59
4.4.5	Banyaknya Gampong yang Memiliki Kelompok Kegiatan Olahraga Menurut Jenis Olahraga dan Ketersediaan Fasilitas/Lapangan Olahraga di Kecamatan Kuta Raja, 2021 <i>Number of Villages Having Sport Activities Groups by Type of Sport and Availability of Sport Facilities/Fields in Kuta Raja Subdistrict, 2021</i>	61
4.4.6	Jumlah Kejahatan Menurut Gampong di Kecamatan Kuta Raja, 2022 <i>Number of Crimes by Villages in Kuta Raja Subdistrict, 2022</i>	62
4.4.7	Jumlah Nikah, Cerai Gugat, dan Cerai Talak Menurut Gampong di Kecamatan Kuta Raja, 2022 <i>Number of Marriages, Divorce by Talak, and Divorce by Petition by Villages in Kuta Raja Subdistrict, 2022</i>	64
4.4.8	Jumlah Dayah, Balai Pengajian, TPA, dan Majelis Ta'lim Menurut Gampong di Kecamatan Kuta Raja, 2022 <i>Number of Dayah, Islamic Recitation, Al-Qur'an Recitation House, and Majelis Ta'lim Villages in Kuta Raja Subdistrict, 2022</i>	65

5. PERTANIAN/AGRICULTURE

5.1	Luas Panen Tanaman Sayuran dan Buah-buahan Semusim Menurut Jenis Tanaman di Kecamatan Kuta Raja (ha), 2019–2022 <i>Harvested Area of Seasonal Vegetables and Fruits by Kind of Plant in Kuta Raja Subdistrict (ha), 2019–2022</i>	69
5.2	Produksi Tanaman Sayuran dan Buah-buahan Semusim Menurut Jenis Tanaman di Kecamatan Kuta Raja (kuintal), 2019–2022 <i>Production of Seasonal Vegetables and Fruits by Kind of Plant in Kuta Raja Subdistrict (quintal), 2019–2022</i>	70
5.3	Luas Panen Tanaman Biofarmaka Menurut Jenis Tanaman di Kecamatan Kuta Raja (m ²), 2019–2022 <i>Harvested Area of Medicinal Plants by Kind of Plant in Kuta Raja Subdistrict (m²), 2019–2022</i>	71
5.4	Produksi Tanaman Biofarmaka Menurut Jenis Tanaman di Kecamatan Kuta Raja (kg), 2019–2022 <i>Production of Medicinal Plants by Kind of Plant in Kuta Raja Subdistrict (kg), 2019–2022</i>	72
5.5	Luas Panen Tanaman Hias Menurut Jenis Tanaman di Kecamatan Kuta Raja (m ²), 2019–2022 <i>Harvested Area of Ornamental Plants by Kind of Plant in Kuta Raja Subdistrict (m²), 2019–2022</i>	73
5.6	Produksi Tanaman Hias Menurut Jenis Tanaman di Kecamatan Kuta Raja (tangkai), 2019–2022 <i>Production of Ornamental Plants by Kind of Plant in Kuta Raja Subdistrict (stalks), 2019–2022</i>	74
5.7	Produksi Buah-Buahan dan Sayuran Tahunan Menurut Jenis Tanaman di Kecamatan Kuta Raja (kuintal), 2019–2022 <i>Production of Annual Fruits and Vegetables by Kind of Plant in Kuta Raja Subdistrict (quintal), 2019–2022</i>	75
5.8	Jumlah Ternak Besar Menurut Jenisnya per Gampong di Kecamatan Kuta Raja, 2022 <i>Number of Large Livestock by Type per Gampong in Kuta Raja Subistrict, 2022</i>	76

5.9	Jumlah Ternak Unggas Menurut Jenisnya per Gampong di Kecamatan Kuta Raja, 2022 <i>Number of Poultry Livestock by Type per Gampong in Kuta Raja Subistrict, 2022</i>	77
6.	PARIWISATA, TRANSPORTASI, DAN KOMUNIKASI/TOURISM, TRANSPORTATION, AND COMMUNICATION	
6.1	PARIWISATA TOURISM	
6.1.1	Jumlah Sarana Akomodasi Menurut Gampong dan Jenis Akomodasi di Kecamatan Kuta Raja, 2021 <i>Number of Accomodation Facilities by Villages and Type of Accomodation in Kuta Raja Subdistrict, 2021</i>	81
6.2	TRANSPORTASI TRANSPORTATION	
6.2.1	Prasarana dan Sarana Transportasi Antar Gampong Menurut Gampong di Kecamatan Kuta Raja, 2021 <i>Inter-Villages/Kelurahan Transportation Infrastructure and Facilities by Villages/Kelurahan in Kuta Raja Subdistrict, 2021</i>	82
6.3	KOMUNIKASI COMMUNICATION	
6.3.1	Keberadaan Kantor Pos/Pos Pembantu/Rumah Pos, Pos Keliling, dan Perusahaan/Agen Jasa Ekspedisi Swasta Menurut Gampong di Kecamatan Kuta Raja, 2021 <i>Number of Post Office/Subsidiary of Post Office, Mobile Portal Service, Private Expedition Service Company by Villages/Kelurahan in Kuta Raja Subdistrict, 2021</i>	84
6.3.2	Jumlah Menara Telepon seluler dan Operator Layanan Komunikasi Telepon Seluler Menurut Gampong di Kecamatan Kuta Raja, 2021 <i>Number of Base Transceiver Station (BTS) and Cellular Phone Communication Service Operators by Villages in Kuta Raja Subdistrict, 2021</i>	85
6.3.3	Kekuatan Sinyal Telepon Seluler dan Jenis Sinyal Internet Telepon Seluler Menurut Gampong di Kecamatan Kuta Raja, 2021 <i>The Strenght of Celular Phone Signal by Villages/Kelurahan in Kuta Raja Subdistrict, 2021</i>	86

7.	PERBANKAN, KOPERASI, DAN PERDAGANGAN/BANKING, COOPERATIVE, AND TRADE	
7.1	Banyaknya Sarana Lembaga Keuangan Bank Menurut Gampong dan Jenis Bank di Kecamatan Kuta Raja, 2021 <i>Number of Bank by Villages and Type of Bank in Kuta Raja Subdistrict, 2021</i>	89
7.2	Banyaknya Koperasi Aktif Menurut Menurut Gampong dan Jenis Koperasi di Kecamatan Kuta Raja, 2021 <i>Number of Cooperative by Villages and Type of Cooperative in Kuta Raja Subdistrict, 2021</i>	90
7.3	Banyaknya Sarana Perdagangan Menurut Gampong dan Jenis Sarana Perdagangan di Kecamatan Kuta Raja, 2021 <i>Number of Trade Facilities by Villages and Type of Trade Facilities in Kuta Raja Subdistrict, 2021</i>	92

PENJELASAN UMUM/EXPLANATORY NOTES

Tanda-tanda, satuan-satuan, dan lain-lainnya yang digunakan dalam publikasi ini adalah sebagai berikut:

Symbols, measurement units, and acronyms which are used in this publication, are as follows:

1. TANDA-TANDA/SYMBOLS

Data tidak tersedia/ <i>Data not available</i>	: ...
Tidak ada atau nol / <i>Null or zero</i>	: -
Data dapat diabaikan/ <i>Data negligible</i>	: 0
Tanda decimal/ <i>Decimal point</i>	: ,
Data tidak dapat ditampilkan/ <i>Not applicable</i>	: NA
Angka estimasi/ <i>Estimated figures</i>	: e
Angka diperbaiki/ <i>Revised figures</i>	: r
Angka sementara/ <i>Preliminary figures</i>	: x
Angka sangat sementara/ <i>Very preliminary figures</i>	: xx
Angka sangat sangat sementara/ <i>Very very preliminary figures</i>	: xxx

2. SATUAN/UNITS

barel/ <i>barrel</i>	: 158,99 liter/ <i>litres</i> = 1/6,2898 m ³
hektar (ha)/ <i>hectare (ha)</i>	: 10 000 m ²
kilometer (km)/ <i>kilometres (km)</i>	: 1 000 meter/ <i>meters (m)</i>
knot/ <i>knot</i>	: 1,8523 km/jam (<i>km/hour</i>)
kuintal/ <i>quintal</i>	: 100 kg
KWh	: 1 000 Watt hour
MWh	: 1 000 KWh
liter (untuk beras)/ <i>litre (for rice)</i>	: 0,80 kg
MMSCF	: 1/35,3 m ³
metrik ton (m.ton)/ <i>metric ton (m. ton)</i>	: 0,98421 long ton = 1 000 kg
ons/ <i>ounce</i>	: 28,31 gram/ <i>grams</i>
ton	: 1 000 kg

Satuan lain: buah, dus, butir, helai/lembar, kaleng, batang, pulsa, ton kilometer (ton-km), jam, menit, persen (%).

Other units: unit, pack, pieces, sheet, tin, pulse, ton-kilometres(ton-km), hour, minute, percent (%).

Perbedaan angka di belakang koma disebabkan oleh pembulatan angka.
The difference in decimal numbers is caused by rounding.

DAFTAR SINGKATAN/LIST OF ABBREVIATION

SI	: Stasiun Iklim/ <i>Climate Station</i>
SMPK	: Stasiun Meterologi Pertanian Khusus/ <i>Special Agricultural Meteorological Station</i>
t.t	: Tempat tidur/ <i>Bed</i>
BCG	: Bacillus Calmette Guerin
DPT	: Difteri, Pertusis, Tetanus/ <i>Diphtheria, Tetanus, and Pertussis</i>
TT	: Tetanus Toxoid
IOT	: Industri Obat Tradisional/ <i>Traditional Medicine Industry</i>
IKOT	: Industri Kecil Obat Tradisional/ <i>Traditional Medicine Small Industry</i>
Alkes	: Alat kesehatan/ <i>Health Kits</i>
PKRT	: Perbekalan Kesehatan Rumah tangga/ <i>Household Health Logistics</i>
Kompl	: Komplemen/ <i>Complement</i>
IRTP	: Industri Pangan Produksi Rumah Tangga/ <i>Foods Home Industry</i>
PBF	: Pedagang Besar Farmasi/ <i>Pharmacy Whole-seller</i>
GFK	: Gudang Farmasi Kab/Kota/Regency/ <i>Municipality Pharmacy Warehouse</i>
RB	: Rumah Bersalin/ <i>Delivery House</i>
Pustu	: Puskesmas pembantu/ <i>Auxiliary Public Health Center</i>
BP	: Balai Pengobatan/ <i>Polyclinic</i>
TPS	: Tempat Pembuangan Sampah Sementara / <i>landfill</i>
Jamkesmas	: Jaminan kesehatan masyarakat miskin/ <i>Poor public health insurance</i>
PJKMU	: Program Jaminan Kesehatan Masyarakat Umum/ <i>General Public Health Insurance Program</i>
SIUP	: Surat Ijin Usaha Perdagangan/ <i>Trading Permission Letter</i>
TDP	: Tanda Daftar Perusahaan/ <i>Company Registration Identity</i>
API	: Angka Pengenal Importir/ <i>Importer's Identity Number</i>

BAB 1

GEOGRAFI

dan

IKLIM



1.1 KEADAAN GEOGRAFI GEOGRAPHY CONDITION

Tabel 1.1.1 **Luas Daerah Menurut Desa/Kelurahan di Kecamatan Kuta Raja, 2021**
Table *Total Area by Villages/Kelurahan in Kuta Raja Subdistrict, 2021*

Gampong Village	Luas Total Area (km²/sq,km)	Persentase terhadap Luas Kecamatan Percentage to Subdistrict Area
(1)	(2)	(3)
Lampaseh Kota	0,32	6,14
Merduati	0,28	5,33
Keudah	0,16	3,12
Peulanggahan	0,52	10,03
Gampong Jawa	1,51	28,90
Gampong Pande	2,42	46,48
Kecamatan Kuta Raja	5,21	100,00

Sumber/Source: BPS, Pendataan Potensi Desa (Podes) 2021/BPS-Statistics Indonesia, Village Potential Data Collecting 2021

Tabel 1.1.2 **Jarak ke Ibukota Kecamatan dan Ibukota Kabupaten/Kota Menurut Gampong di Kecamatan Kuta Raja (km), 2021**
Distance to the Subdistrict Capital and Regency/Municipal Capital by Villages in Kuta Raja Subdistrict (km), 2021

Gampong Village	Jarak ke Ibukota Kecamatan Distance to Subdistrict Capital	Jarak ke Ibukota Kabupaten/ Kota Distance to Regency/Municipal Capital
(1)	(2)	(3)
Lampaseh Kota	1	1
Merduati	1	2
Keudah	1	3
Peulanggahan	1	2
Gampong Jawa	1	3
Gampong Pande	1	3

Sumber/Source: BPS, Pendataan Potensi Desa (Podes) 2021/BPS-Statistics Indonesia, Village Potential Data Collecting 2021

BAB 2

PEMERINTAHAN



2.1 WILAYAH ADMINISTRATIF ADMINISTRATIVE AREA

Tabel 2.1.1 Status Daerah Menurut Gampong di Kecamatan Kuta Raja, 2022
Table *Regional Status by Village in Kuta Raja Subdistrict, 2022*

Gampong Village	Status Daerah Regional Status
(1)	(2)
Lampaseh Kota	Perkotaan
Merduati	Perkotaan
Keudah	Perkotaan
Peulanggahan	Perkotaan
Gampong Jawa	Perkotaan
Gampong Pande	Perkotaan

Sumber/Source: BPS Kota Banda Aceh/*BPS-Statistics of Banda Aceh Municipality*

Tabel 2.1.2
Table

Nama Mukim, Gampong, dan Dusun di Kecamatan Kuta Raja, 2022
Names of Mukim, Village, and Dusun in Kuta Raja Subdistrict, 2022

Mukim Mukim	Gampong Village	Dusun Dusun
(1)	(2)	(3)
Tgk Dianjong	Lampaseh Kota	Pendidikan
		Muhajirin
		Mina
		Pasantren
	Merduati	Mesjid
		Kemuning
		Sedap Malam
		Melati
	Keudah	Mawar
		Seroja
		Kamboja
		Beringin
	Peulanggahan	Cemara
		Kenari
		Kemuning
		T Dianjong
	Gampong Jawa	Laksana
		Abdul Chatib
		Tgk Ijo
		Syah Bandar
Tgk Muda		
Tuan Dibanda		
	Said Usman	
	Hamzah Yunus	
	Lamnyong	

Lanjutan Tabel/*Continued Table* 2.1.2

Mukim Mukim	Gampong Village	Dusun Dusun
(1)	(2)	(3)
	Gampong Pande	Kandang Meugat
		Raja Sieuro
		Cut Ajalil

Sumber/Source: Kantor Keuchik/*Village Office*

<https://bandaacehkota.bps.go.id>

2.2 SUMBER DAYA MANUSIA HUMAN RESOURCES

Tabel 2.2.1 Nama Camat, Pendidikan, dan Masa Jabatan di Kecamatan Kuta Raja Sejak Tahun 1985 – 2022
Table *Name of Subdistrict Head, Education, and Term of Office in Kuta Raja Subdistrict Since 1985 – 2022*

No No	Nama Camat Name of Subdistric Head	Pendidikan Education	Masa Jabatan Term of Office
(1)	(2)	(3)	(4)
1.	Drs. Dwi Putrasyah	S1	2000 – 2005
2.	Drs. M. Diwarsyah	S1	2005 – 2008
3.	Ria Jelmanita, S.Sos	S1	2008 – 2013
4.	Yusnardi, S.STP, M.Si	S2	2013 – 2018
5.	Maswani, S.STP	S2	2018 – 2018
6.	Wahyudi, S.STP	S1	2018 – 2019
7.	Arie Januar, S.STP, M.Si	S2	2019 – 2021
8.	Zahrul Fuadi, S.IP	S1	2021 - sekarang

Sumber/Source: Kantor Camat Kuta Raja/Kuta Raja Subdistrict Office

Tabel 2.2.2
Table

Daftar Pegawai pada Sekretariat Kecamatan Kuta Raja Menurut Jabatan dan Pangkat Tahun 2022
List of Employees at the Kuta Raja District Secretariat by Position and Rank in 2022

No No	Nama Name	Jabatan Position	Pangkat/Golongan Rank/Class			
			I (4)	II (5)	III (6)	IV (7)
1.	Zahrul Fuadi, S.IP	Camat				v
2.	Yuwanda Yusri, SE, MM	Sekretaris Camat			v	
3.	Muhammad Zaini, S.Sos	Kasi. Ketentraman dan Ketertiban			v	
4.	Erlinawaty, SH	Kasi. Pelaksanaan Keistimewaan Aceh dan Kesejahteraan			v	
5.	Reni Hayati, SP	Kasi. Pelayanan Umum, Kerjasama dan Informasi			v	
6.	Darwiansyah M. Jamaluddin, S.T	Kasi. Pemerintahan Mukim dan Gampong			v	
7.	Yulie, A.Md	Kasubbag. Umum, Kepegawaian dan Aset			v	
8.	Zulkhaira, S.E	Kasubbag. Keuangan Pelaporan			v	
9.	Zahara	Pengadministrasi Persuratan			v	
10.	Defilia Filian, S.Sos	Pengolah Data			v	
11.	Fauzi	Bendahara			v	
12.	Ahmad Perkasa, S.E	Pengolah Data			v	
13.	Faisal	Pengadministrasi Umum			v	
14.	Amirullah	Pengadministrasi Umum		v		
15.	Iwan Setiawan	Pengadministrasi Umum		v		

Sumber/Source: Kantor Camat Kuta Raja/Kuta Raja Subdistrict Office

Tabel 2.2.3 Petugas Bintara Pembina Desa (Babinsa) Menurut Gampong di Kecamatan Kuta Raja, 2022
Table Village Advisory Officer (Babinsa) According to Gampong in Kuta Raja District, 2022

No No	Gampong Village	Babinsa Babinsa
(1)	(2)	(3)
1.	Lampaseh Kota	Sertu Juniadi
2.	Merduati	Serda Rahmad Devis
3.	Keudah	Serda Amfal
4.	Peulanggahan	Sertu Muhammad Isa
5.	Gampong Jawa	Serma Eka Fahrul Putra
6.	Gampong Pande	Serma Rifki Mufthi

Sumber/Source: Komando Rayon Militer Kuta Raja/Kuta Raja Military District Command

Tabel 2.2.4 Petugas Bhayangkara Pembina Keamanan dan Ketertiban Masyarakat (Bhabinkamtibmas) Menurut Gampong di Kecamatan Kuta Raja, 2022
Table *Bhayangkara Officer for Community Security and Order (Bhabinkamtibmas) According to Gampong in Kuta Raja District, 2022*

No No	Gampong Village	Bhabinkamtibmas Bhabinkamtibmas
(1)	(2)	(3)
1.	Lampaseh Kota	Aipda Saipul Rona
2.	Merduati	Brigadir Juanda
3.	Keudah	Bripka Mauliz Novrial
4.	Peulanggahan	Aiptu M. Nazir
5.	Gampong Jawa	Bripka Indra Saputra
6.	Gampong Pande	Bripka Ibnu

Sumber/Source: Kepolisian Sektor Ulee Lheue/Ulee Lheue Sektor Sector Police

Tabel 2.2.5 Nama Keuchik dan Pendidikan yang Ditamatkan Menurut Gampong di Kecamatan Kuta Raja, 2022
Table *Name of Keuchik and Education Completed by Gampong in Kuta Raja Subdistrict, 2022*

No No	Gampong Village	Keuchik Keuchik	Pendidikan yang Ditamatkan Graduated Officer
(1)	(2)	(3)	
1.	Lampaseh Kota	Abdul Hadi, S.STP, M.Si	S2
2.	Merduati	Muchktar	SMA
3.	Keudah	Yuwanda Yusri, SE, MM	S2
4.	Peulanggahan	Ferdiansyah	SMA
5.	Gampong Jawa	Mukhlis	SMA
6.	Gampong Pande	Deo Fiscia Erjiansyah	SMA

Sumber/Source: Kantor Keuchik/Village Office

Tabel 2.2.6 Jumlah Aparat Gampong di Kecamatan Kuta Raja, 2021
Table Number of Gampong Officials in Kuta Raja Subdistrict, 2021

No No	Gampong Village	Keuchik Keuchik	Sekretaris Gampong Village Secretary	Kepala Dusun Kepala Dusun	Tuha Peut Tuha Peut
(1)	(2)	(3)	(4)	(5)	(6)
1.	Lampaseh Kota	1	1	5	5
2.	Merduati	1	1	5	9
3.	Keudah	1	1	5	7
4.	Peulanggahan	1	1	5	7
5.	Gampong Jawa	1	1	5	9
6.	Gampong Pande	1	1	4	7
Kecamatan Kuta Raja	2021	6	6	29	44
	2020	6	6	29	43
	2019	6	6	29	43

Lanjutan Tabel/*Continued Table 2.2.6*

No No	Gampong Village	Sekretariat Gampong (kaur keuangan, kaur perencanaan, lainnya) Village Secretariat	Pelaksana Teknis (kasi pemerintahan, kasi kesejahteraan, lainnya) Others
(1)	(2)	(7)	(8)
1	Lampaseh Kota	3	4
2	Merduati	3	4
3	Keudah	3	4
4	Peulanggahan	3	7
5	Gampong Jawa	3	5
6	Gampong Pande	3	4
Kecamatan Kuta Raja	2021	18	28
	2020	16	18
	2019

Sumber/*Source*: BPS, Pendataan Potensi Desa (Podes) 2021/*BPS-Statistics Indonesia, Village Potential Data Collecting 2021*

Tabel 2.2.7
Table

Keberadaan Badan Musyawarah Gampong dan Jumlah Kegiatan Musyawarah Menurut Gampong di Kecamatan Kuta Raja, 2021
Existence of Village Consultative Body and Number of Deliberation Activities by Village in Kuta Raja Subdistrict, 2021

No No	Gampong Village	Keberadaan Badan Permusyawaratan Gampong <i>The existence of the Village Consultative Body</i>	Jumlah Kegiatan Musyawarah Gampong <i>Number of Village Deliberation Activities</i>
(1)	(2)	(3)	(4)
1	Lampaseh Kota	Ada	8
2	Merduati	Ada	12
3	Keudah	Ada	12
4	Peulanggahan	Ada	12
5	Gampong Jawa	Ada	15
6	Gampong Pande	Ada	15
Kecamatan Kuta Raja		-	74

Sumber/Source: BPS, Pendataan Potensi Desa (Podes) 2021/BPS-Statistics Indonesia, Village Potential Data Collecting 2021

Tabel 2.2.8 Keberadaan Fasilitas Pemerintahan di Dalam Kecamatan Kuta Raja, 2021
Table Existence of Government Facilities in Kuta Raja Subdistrict, 2021

No No	Gampong Village	Kantor Pemerintahan Gampong Village Government Office	Balai Gampong/Lapangan Olahraga Village Hall	Tanah Kas Gampong/Ulayat Village Cash Land	Aset Gampong Lainnya Others
(1)	(2)	(3)	(4)	(5)	(6)
1	Lampaseh Kota	Ada	Ada	Ada	Ada
2	Merduati	Ada	Ada	Ada	Ada
3	Keudah	Ada	Ada	Ada	Tidak Ada
4	Peulanggahan	Ada	Ada	Ada	Ada
5	Gampong Jawa	Ada	Ada	Ada	Ada
6	Gampong Pande	Ada	Ada	Ada	Ada

Sumber/Source: BPS, Pendataan Potensi Desa (Podes) 2021/BPS-Statistics Indonesia, Village Potential Data Collecting 2021

Tabel 2.2.9 Jumlah Badan Usaha Milik Desa (BUMDes) dan Pasar Desa Menurut Gampong di Kecamatan Kuta Raja, 2021
Table Number of Village Owned Enterprises (BUMDes) and Village Markets by Gampong in Kuta Raja Subdistrict, 2021

No No	Gampong Village	BUMDes BUMDes	Pasar Desa (pasar hewan/ pelelangan ikan/hasil pertanian) Village Market
(1)	(2)	(3)	(4)
1	Lampaseh Kota	1	-
2	Merduati	1	-
3	Keudah	-	-
4	Peulanggahan	1	-
5	Gampong Jawa	2	-
6	Gampong Pande	2	-
Kecamatan Kuta Raja		7	-

Sumber/Source: BPS, Pendataan Potensi Desa (Podes) 2021/BPS-Statistics Indonesia, Village Potential Data Collecting 2021

Tabel 2.2.10 Target dan Realisasi APBG Menurut Gampong di Kecamatan Kuta Raja, 2022
APBG Targets and Realization by Gampong in Kuta Raja Subdistrict, 2022

No No	Gampong Village	Target Target	Realisasi Realization	Persentase Percentage
(1)	(2)	(3)	(4)	(5)
1	Lampaseh Kota	1 404 200 005	1 255 794 996	89
2	Merduati	1 474 207 412	1 278 700 800	87
3	Keudah	1 411 306 263	1 319 807 400	94
4	Peulanghahan	1 504 381 267	1 391 218 600	92
5	Gampong Jawa	2 399 845 724	1 933 125 000	81
6	Gampong Pande	1 507 153 517	1 390 457 000	92
Kecamatan Kuta Raja		9 701 094 188	8 569 103 796	88

Sumber/Source: Dinas Pemberdayaan Masyarakat dan Gampong Kota Banda Aceh/Community and Village Empowerment Service of Banda Aceh Municipality

BAB 3

PENDUDUK



Tabel 3.1
Table

Penduduk, Distribusi Persentase Penduduk, Kepadatan Penduduk, Rasio Jenis Kelamin Penduduk Menurut Gampong di Kecamatan Kuta Raja, 2022
Population, Percentage Distribution of Population, Population Density, and Population Sex Ratio by Villages in Kuta Raja Subdistrict, 2022

Gampong Village	Penduduk/Population		
	Laki-Laki/Male	Perempuan/Female	Jumlah/Total
(1)	(2)	(3)	(4)
Lampaseh Kota	1 253	1 173	2 426
Merduati	1 440	1 427	2 867
Keudah	1 145	1 121	2 266
Peulanggahan	1 369	1 314	2 683
Gampong Jawa	1 669	1 641	3 310
Gampong Pande	552	548	1 100
Kecamatan Kuta Raja	7 428	7 224	14 652

Lanjutan Tabel/*Continued Table 3.1*

Gampong Village	Persentase Penduduk Percentage of Total Population	Kepadatan Penduduk (per Km²) Population Density per sq.km	Rasio Jenis Kelamin Penduduk Population Sex Ratio
(1)	(5)	(6)	(7)
Lampaseh Kota	15,47	14 163	102
Merduati	18,31	5 160	104
Keudah	19,57	10 239	101
Peulanggahan	16,56	7 581	107
Gampong Jawa	7,51	455	101
Gampong Pande	22,59	2 192	102
Kecamatan Kuta Raja	100,00	2 812	103

Sumber/*Source*: Dinas Kependudukan dan Pencatatan Sipil Kota Banda Aceh/ *Population and Civil Registration Service of Banda Aceh Municipality*

Tabel 3.2
Table

Jumlah Penduduk Menurut Kelompok Umur dan Jenis Kelamin di Kecamatan Kuta Raja, 2022
Population by Age Groups and Sex in Kuta Raja Subdistrict, 2022

Kelompok Umur Age Groups	Jenis Kelamin/Sex		
	Laki-Laki Male	Perempuan Female	Jumlah Total
(1)	(2)	(3)	(4)
0-4	575	595	1 170
5-9	893	888	1 781
10-14	885	832	1 717
15-19	649	617	1 266
20-24	434	410	844
25-29	410	465	875
30-34	614	715	1 329
35-39	727	795	1 522
40-44	661	659	1 320
45-49	506	408	914
50-54	394	323	717
55-59	295	200	495
60-64	164	132	296
65-69	111	85	196
70-74	62	48	110
75+	48	52	100
Kecamatan Kuta Raja	7 428	7 224	14 652

Sumber/Source: Dinas Kependudukan dan Pencatatan Sipil Kota Banda Aceh/ Population and Civil Registration Service of Banda Aceh Municipality

Tabel
Table 3.3

Sebaran Penduduk dan Luas Wilayah Menurut Gampong dalam Kecamatan Kuta Raja, 2022
Distribution of Population and Area by Village in Kuta Raja Subdistrict, 2022

Gampong Village	Penduduk (persen) Population (percent)	Luas Wilayah (persen) Area (percent)
(1)	(2)	(3)
Lampaseh Kota	15,47	6,14
Merduati	18,31	5,33
Keudah	19,57	3,12
Peulanggahan	16,56	10,03
Gampong Jawa	7,51	28,90
Gampong Pande	22,59	46,48
Kecamatan Kuta Raja	100,00	100,00

Sumber/Source: Dinas Kependudukan dan Pencatatan Sipil Kota Banda Aceh/ *Population and Civil Registration Service of Banda Aceh Municipality*

Tabel
Table 3.4

**Jumlah Bayi Lahir yang Memperoleh Akte Kelahiran
Menurut Gampong di Kecamatan Kuta Raja, 2022**
**Number of Babies Born with Birth Certificates by Gampong
in Kuta Raja Subdistrict, 2022**

Gampong Village	Jumlah Total
(1)	(2)
Lampaseh Kota	33
Merduati	39
Keudah	27
Peulanggahan	32
Gampong Jawa	55
Gampong Pande	11
Kecamatan Kuta Raja	197

Sumber/Source: Dinas Kependudukan dan Pencatatan Sipil Kota Banda Aceh/ *Population and Civil Registration Service of Banda Aceh Municipality*

Tabel 3.5
Table

**Jumlah Penduduk yang Meninggal Menurut Gampong di
Kecamatan Kuta Raja, 2022**
**Number of People Who Died by Gampong in Kuta Raja
Subdistrict, 2022**

Gampong Village	Jan Jan	Feb Feb	Mar Mar	Apr Apr	Mei May	Juni June	Juli July
(1)	(2)	(3)	(4)	(5)	(6)	(7)	(8)
Lampaseh Kota
Merduati
Keudah
Peulanggahan
Gampong Jawa
Gampong Pande
Kecamatan Kuta Raja							

Lanjutan Tabel/*Continued Table* 3.5

Gampong Village	Agt Agt	Sept Sept	Okt Oct	Nov Nov	Des Dec	Total Total
(1)	(2)	(3)	(4)	(5)	(6)	(7)
Lampaseh Kota
Merduati
Keudah
Peulanggahan
Gampong Jawa
Gampong Pande
Kecamatan Kuta Raja						60

Sumber/Source: Dinas Kependudukan dan Pencatatan Sipil Kota Banda Aceh/ *Population and Civil Registration Service of Banda Aceh Municipality*

BAB 4

SOSIAL & KESEJAHTERAAN RAKYAT



<https://bandaacehkota.bps.go.id>

4.1 PENDIDIKAN EDUCATION

Tabel 4.1.1 Banyaknya Gampong yang Memiliki Fasilitas Sekolah Menurut Tingkat Pendidikan di Kecamatan Kuta Raja, 2019–2021
Number of Villages Having Educational Facilities by Educational Level in Kuta Raja Subdistrict, 2019–2021

Tingkat Pendidikan <i>Educational Level</i>	2019	2020	2021
(1)	(2)	(3)	(4)
Sekolah Dasar (SD) <i>Primary School</i>	6	6	6
Madrasah Ibtidaiyah (MI) <i>Madrasah Ibtidaiyah</i>	-	1	1
Sekolah Menengah Pertama (SMP) <i>Junior High School</i>	2	2	2
Madrasah Tsanawiyah (MTs) <i>Madrasah Tsanawiyah (MTs)</i>	-	-	-
Sekolah Menengah Atas (SMA) <i>Senior High School</i>	2	2	2
Sekolah Menengah Kejuruan (SMK) <i>Vocational High School</i>	-	-	-
Madrasah Aliyah (MA) <i>Madrasah Aliyah</i>	-	-	-
Akademi/Perguruan Tinggi <i>Academy/University</i>	1	1	1

Catatan/Note: ¹Desa pada tabel ini termasuk Unit Permukiman Transmigrasi (UPT) yang masih dibina oleh kementerian terkait/
Villages in this table include Transmigration Settlement Unit which is still fostered by the relevant ministries.

Sumber/Source: BPS, Pendataan Potensi Desa (Podes) 2020 dan 2021/BPS-Statistics Indonesia, *Village Potential Data Collecting 2020 and 2021*

Tabel 4.1.2 Jumlah Sekolah Menurut Tingkat Pendidikan di Kecamatan Kuta Raja, 2021/2022 dan 2022/2023
Table Number of Schools by Educational Level in Kuta Raja Subdistrict, 2021/2022 and 2022/2023

Tingkat Pendidikan Educational Level	Negeri/Public		Swasta/Private		Jumlah/Total	
	2021/2022	2022/2023	2021/2022	2022/2023	2021/2022	2022/2023
(1)	(2)	(3)	(4)	(5)	(6)	(7)
Taman Kanak-Kanak (TK) ¹ /Kindergarten ¹	-	-	6	6	6	6
Raudatul Athfal (RA) ^{2,3} Raudatul Athfal (RA) ^{2,3}	-	-	-	-	-	-
Sekolah Dasar (SD) ¹ Elementary Schools ¹	5	5	1	1	6	6
Madrasah Ibtidaiyah (MI) ² /Madrasah Ibtidaiyah (MI) ²	-	-	1	1	1	1
Sekolah Menengah Pertama (SMP) ¹ /Junior High Schools ¹	1	1	1	1	2	2
Madrasah Tsanawiyah (MTs) ² /Madrasah Tsanawiyah (MTs) ²	-	-	1	1	1	1
Sekolah Menengah Atas (SMA) ¹ /Senior High Schools ¹	2	2	-	-	2	2
Sekolah Menengah Kejuruan (SMK) ¹ Vocational High Schools ¹	-	-	-	-	-	-
Madrasah Aliyah (MA) ² Madrasah Aliyah (MA) ²	-	-	1	1	1	1

Catatan/Note: ³ Seluruh Raudatul Athfal (RA) berstatus swasta/All Raudatul Athfal (RA) are private

Sumber/Source: ¹ Kementerian Pendidikan, Kebudayaan, Riset, dan Teknologi Data Semester Ganjil/Ministry of Education, Culture, Research, and Technology, Odd Semester Report Data

² Kementerian Agama, Data Semester Ganjil/Ministry of Religious Affairs, Odd Semester Data

Tabel 4.1.3
Table

**Jumlah Guru Menurut Tingkat Pendidikan di Kecamatan
Kuta Raja, 2021/2022 dan 2022/2023**
**Number of Teachers by Educational Level in Kuta Raja
Subdistrict, 2021/2022 and 2022/2023**

Tingkat Pendidikan Educational Level	Negeri/Public		Swasta/Private		Jumlah/Total	
	2021/2022	2022/2023	2021/2022	2022/2023	2021/2022	2022/2023
(1)	(2)	(3)	(4)	(5)	(6)	(7)
Taman Kanak-Kanak (TK) ¹ /Kindergarten ¹	-	-	40	44	40	44
Raudatul Athfal (RA) ² Raudatul Athfal (RA) ²	-	-	-	-	-	-
Sekolah Dasar (SD) ^{1,3} Elementary Schools ^{1,3}	79	80	18	16	97	96
Madrasah Ibtidaiyah (MI) ² /Madrasah Ibtidaiyah (MI) ²	-	-	21	27	21	27
Sekolah Menengah Pertama (SMP) ^{1,3} / Junior High Schools ^{1,3}	20	17	10	9	30	26
Madrasah Tsanawiyah (MTs) ² /Madrasah Tsanawiyah (MTs) ²	-	-	21	20	21	20
Sekolah Menengah Atas (SMA) ^{1,3} /Senior High Schools ^{1,3}	37	39	-	-	37	39
Sekolah Menengah Kejuruan (SMK) ^{1,3,4} Vocational High Schools ^{1,3,4}	-	-	-	-	-	-
Madrasah Aliyah (MA) ² Madrasah Aliyah (MA) ²	-	-	13	15	13	15

Catatan/Note: ³ Jumlah guru termasuk kepala sekolah dan guru/The total of teachers including headmaster and teacher.

⁴ Guru yang mengajar di dua sekolah atau lebih dihitung di masing-masing sekolah/Teacher who taught in two schools or more counted in every school.

Sumber/Source: ¹ Kementerian Pendidikan, Kebudayaan, Riset, dan Teknologi Data Semester Ganjil/Ministry of Education, Culture, Research, and Technology, Odd Semester Report Data

² Kementerian Agama, Data Semester Ganjil/Ministry of Religious Affairs, Odd Semester Data

Tabel 4.1.4 Jumlah Murid Menurut Tingkat Pendidikan di Kecamatan Kuta Raja, 2021/2022 dan 2022/2023
Table Number of Pupils by Educational Level in Kuta Raja Subdistrict, 2021/2022 and 2022/2023

Tingkat Pendidikan Educational Level	Negeri/Public		Swasta/Private		Jumlah/Total	
	2021/2022	2022/2023	2021/2022	2022/2023	2021/2022	2022/2023
(1)	(2)	(3)	(4)	(5)	(6)	(7)
Taman Kanak-Kanak (TK) ¹ /Kindergarten ¹	-	-	390	446	390	446
Raudatul Athfal (RA) ² Raudatul Athfal (RA) ²	-	-	-	-	-	-
Sekolah Dasar (SD) ¹ Elementary Schools ¹	1 654	1 658	223	213	1 877	1 871
Madrasah Ibtidaiyah (MI) ² /Madrasah Ibtidaiyah (MI) ²	-	-	254	295	254	295
Sekolah Menengah Pertama (SMP) ¹ /Junior High Schools ¹	130	119	57	66	187	185
Madrasah Tsanawiyah (MTs) ² /Madrasah Tsanawiyah (MTs) ²	-	-	192	144	192	144
Sekolah Menengah Atas (SMA) ¹ /Senior High Schools ¹	202	260	-	-	202	260
Sekolah Menengah Kejuruan (SMK) ¹ Vocational High Schools ¹	-	-	-	-	-	-
Madrasah Aliyah (MA) ² Madrasah Aliyah (MA) ²	-	-	47	38	47	38

Sumber/Source: ¹ Kementerian Pendidikan, Kebudayaan, Riset, dan Teknologi Data Semester Ganjil/Ministry of Education, Culture, Research, and Technology, Odd Semester Report Data

² Kementerian Agama, Data Semester Ganjil/Ministry of Religious Affairs, Odd Semester Data

Tabel
4.1.5
Table

**Banyaknya Sekolah Dasar (SD) Menurut Gampong di
Kecamatan Kuta Raja, 2021/2022**
*Number of Elementary Schools (SD) by Villages in Kuta Raja
Subdistrict, 2021/2022*

Gampong Village	Negeri Public	Swasta Private	Jumlah Total
(1)	(2)	(3)	(4)
Lampaseh Kota	-	-	-
Merduati	2	1	3
Keudah	1	-	1
Peulangahan	1	-	1
Gampong Jawa	1	-	1
Gampong Pande	-	-	-
Kecamatan Kuta Raja	5	1	6

Sumber/Source: BPS, Pendataan Potensi Desa (Podes) 2021/BPS-Statistics Indonesia, Village Potential Data Collecting 2021

Tabel 4.1.6 Banyaknya Madrasah Ibtidaiyah (MI) Menurut Gampong di Kecamatan Kuta Raja, 2021/2022
Table *Number of Madrasah Ibtidaiyah (MI) by Villages in Kuta Raja Subdistrict, 2021/2022*

Gampong Village	Negeri Public	Swasta Private	Jumlah Total
(1)	(2)	(3)	(4)
Lampaseh Kota	-	-	-
Merduati	-	1	1
Keudah	-	-	-
Peulanggahan	-	-	-
Gampong Jawa	-	-	-
Gampong Pande	-	-	-
Kecamatan Kuta Raja	-	1	1

Sumber/Source: BPS, Pendataan Potensi Desa (Podes) 2021/BPS-Statistics Indonesia, Village Potential Data Collecting 2021

Tabel
Table 4.1.7

**Banyaknya Sekolah Menengah Pertama (SMP) Menurut
Gampong di Kecamatan Kuta Raja, 2021/2022**
**Number of Junior High School (SD) by Villages in Kuta Raja
Subdistrict, 2021/2022**

Gampong Village	Negeri Public	Swasta Private	Jumlah Total
(1)	(2)	(3)	(4)
Lampaseh Kota	-	-	-
Merduati	-	1	1
Keudah	-	-	-
Peulanggahan	-	-	-
Gampong Jawa	1	-	1
Gampong Pande	-	-	-
Kecamatan Kuta Raja	1	1	2

Sumber/Source: BPS, Pendataan Potensi Desa (Podes) 2021/BPS-Statistics Indonesia, Village Potential Data Collecting 2021

Tabel 4.1.8 Banyaknya Madrasah Tsanawiyah (MTs) Menurut Gampong di Kecamatan Kuta Raja, 2021/2022
Table *Number of Madrasah Tsanawiyah (MTs) by Villages in Kuta Raja Subdistrict, 2021/2022*

Gampong Village	Negeri Public	Swasta Private	Jumlah Total
(1)	(2)	(3)	(4)
Lampaseh Kota	-	-	-
Merduati	-	-	-
Keudah	-	-	-
Peulanggahan	-	-	-
Gampong Jawa	-	-	-
Gampong Pande	-	-	-
Kecamatan Kuta Raja	-	-	-

Sumber/Source: BPS, Pendataan Potensi Desa (Podes) 2021/BPS-Statistics Indonesia, Village Potential Data Collecting 2021

Tabel 4.1.9
Table

**Banyaknya Sekolah Menengah Atas (SMA) Menurut
Gampong di Kecamatan Kuta Raja, 2021/2022**
**Number of Senior High School (SMA) by Villages in Kuta Raja
Subdistrict, 2021/2022**

Gampong Village	Negeri Public	Swasta Private	Jumlah Total
(1)	(2)	(3)	(4)
Lampaseh Kota	1	-	1
Merduati	-	-	-
Keudah	-	-	-
Peulangahan	-	-	-
Gampong Jawa	1	-	1
Gampong Pande	-	-	-
Kecamatan Kuta Raja	2	-	2

Sumber/Source: BPS, Pendataan Potensi Desa (Podes) 2021/BPS-Statistics Indonesia, Village Potential Data Collecting 2021

Tabel 4.1.10 Banyaknya Madrasah Aliyah (MA) Menurut Gampong di Kecamatan Kuta Raja, 2021/2022
Table **Number of Madrasah Aliyah (MA) by Villages in Kuta Raja Subdistrict, 2021/2022**

Gampong Village	Negeri Public	Swasta Private	Jumlah Total
(1)	(2)	(3)	(4)
Lampaseh Kota	-	-	-
Merduati	-	-	-
Keudah	-	-	-
Peulanggahan	-	-	-
Gampong Jawa	-	-	-
Gampong Pande	-	-	-
Kecamatan Kuta Raja	-	-	-

Sumber/Source: BPS, Pendataan Potensi Desa (Podes) 2021/BPS-Statistics Indonesia, Village Potential Data Collecting 2021

Tabel 4.1.11
Table

Banyaknya Sekolah Menengah Kejuruan (SMK) Menurut Gampong di Kecamatan Kuta Raja, 2021/2022
Number of Vocational High Schools (SMK) by Villages in Kuta Raja Subdistrict, 2021/2022

Gampong Village	Negeri Public	Swasta Private	Jumlah Total
(1)	(2)	(3)	(4)
Lampaseh Kota	-	-	-
Merduati	-	-	-
Keudah	-	-	-
Peulangahan	-	-	-
Gampong Jawa	-	-	-
Gampong Pande	-	-	-
Kecamatan Kuta Raja	-	-	-

Sumber/Source: BPS, Pendataan Potensi Desa (Podes) 2021/BPS-Statistics Indonesia, Village Potential Data Collecting 2021

Tabel 4.1.12 Banyaknya Akademi/Perguruan Tinggi Menurut Gampong di Kecamatan Kuta Raja, 2021/2022
Table **Number of Academy/College by Villages in Kuta Raja Subdistrict, 2021/2022**

Gampong Village	Negeri Public	Swasta Private	Jumlah Total
(1)	(2)	(3)	(4)
Lampaseh Kota	-	-	-
Merduati	-	1	1
Keudah	-	-	-
Peulanggahan	-	-	-
Gampong Jawa	-	-	-
Gampong Pande	-	-	-
Kecamatan Kuta Raja	-	1	1

Sumber/Source: BPS, Pendataan Potensi Desa (Podes) 2021/BPS-Statistics Indonesia, Village Potential Data Collecting 2021

4.2 KESEHATAN HEALTH

Tabel 4.2.1 Banyaknya Gampong yang Memiliki Sarana Kesehatan Menurut Jenis Sarana Kesehatan di Kecamatan Kuta Raja, 2019–2021
Table *Number of Villages Health Facilities by Type of Health Facilities in Kuta Raja Subdistrict, 2019–2021*

Jenis Sarana Kesehatan <i>Type of Health Facilities</i>	2019	2020	2021
(1)	(2)	(3)	(4)
Rumah Sakit <i>Hospital</i>	-	-	-
Rumah Sakit Bersalin <i>Maternity Hospital</i>	-	-	-
Poliklinik/Balai Pengobatan <i>Polyclinic</i>	-	-	-
Puskesmas Rawat Inap <i>Public Health Center with Inpatient Care</i>	-	-	-
Puskesmas Tanpa Rawat Inap <i>Public Health Center without Inpatient Care</i>	1	1	1
Apotek <i>Pharmacy</i>	3	3	3

Sumber/Source: BPS, Pendataan Potensi Desa (Podes) 2019–2021/BPS-Statistics Indonesia, *Village Potential Data Collecting 2019–2021*

Tabel 4.2.2 Banyaknya Warga Penderita Kekurangan Gizi Menurut Gampong di Kecamatan Kuta Raja, 2020
Table *Number of People with Malnutrition by Villages/Kelurahan in Kuta Raja Subdistrict, 2020*

Gampong Village	2020
(1)	(2)
Lampaseh Kota	7
Merduati	8
Keudah	20
Peulanggahan	8
Gampong Jawa	5
Gampong Pande	5
Kecamatan Kuta Raja	53

Sumber/Source: BPS, Pendataan Potensi Desa (Podes) 2021/BPS-Statistics Indonesia, Village Potential Data Collecting 2021

4.3 PERUMAHAN DAN LINGKUNGAN HOUSING AND ENVIRONMENT

Tabel 4.3.1 Banyaknya Gampong Menurut Sumber Air Minum Sebagian Besar Keluarga di Kecamatan Kuta Raja, 2019–2021
Number of Villages by Drinking Water Source of Majority Family in Kuta Raja Subdistrict, 2019–2021

Sumber Air Minum Source of Drinking Water	2019	2020	2021
(1)	(2)	(3)	(4)
Air Kemasan Bermerk/ <i>Branded Bottled Water</i>	-	-	-
Air Isi Ulang/ <i>Refil Water</i>	6	6	6
Leding Dengan Meteran/ <i>Metered Piped Water</i>	-	-	-
Leding Tanpa Meteran/ <i>Non Metered Piped Water</i>	-	-	-
Sumur Bor atau Pompa/ <i>Artesian Well or Pumped Water</i>	-	-	-
Sumur/ <i>Well</i>	-	-	-
Mata Air/ <i>Spring</i>	-	-	-
Sungai/Danau/Kolam/ Waduk/Situ/ Embung/Bendungan/ <i>River/Lake/Pond/ Reservoir/Dam</i>	-	-	-
Air Hujan/ <i>Rainwater</i>	-	-	-
Lainnya/ <i>Others</i>	-	-	-

Sumber/*Source*: BPS, Pendataan Potensi Desa (Podes) 2019–2021/*BPS-Statistics Indonesia, Village Potential Data Collecting 2019–2021*

Tabel 4.3.2 Banyaknya Keluarga Menurut Gampong dan Jenis Pengguna Listrik di Kecamatan Kuta Raja, 2021
Table **Number of Family by Villages and Type of Electricity Consumer in Kuta Raja Subdistrict, 2021**

Gampong Village	Pengguna Listrik Electricity Consumer			Bukan Pengguna Listrik Not Electricity Consumer
	PLN State Electricity Company	Non PLN Non-State Electricity Company	Jumlah Total	
(1)	(2)	(3)	(4)	(5)
Lampaseh Kota	614	-	614	-
Merduati	1 090	-	1 090	-
Keudah	536	-	536	-
Peulanggahan	756	-	756	-
Gampong Jawa	983	-	983	-
Gampong Pande	315	-	315	-
Kecamatan Kuta Raja	4 294	-	4 294	-

Sumber/Source: BPS, Pendataan Potensi Desa (Podes) 2021/BPS-Statistics Indonesia, Village Potential Data Collecting 2021

Tabel 4.3.3
Table

Banyaknya Gampong Menurut Sumber Penerangan Jalan Utama Gampong di Kecamatan Kuta Raja, 2019–2021
Number of Villages by Source of Villages/Kelurahan's Main Street Illumination in Kuta Raja Subdistrict, 2019–2021

Sumber Penerangan Jalan Utama Source of Main Street Illumination	2019	2020	2021
(1)	(2)	(3)	(4)
Listrik Pemerintah/ <i>State Electricity</i>	5	6	6
Listrik Non Pemerintah/ <i>Non-State Electricity</i>	1	-	-
Non Listrik/ <i>Non-Electric</i>	-	-	-

Sumber/Source: BPS, Pendataan Potensi Desa (Podes) 2019–2021/BPS-Statistics Indonesia, Village Potential Data Collecting 2019–2021

Tabel 4.3.4 Banyaknya Gampong Menurut Penggunaan Fasilitas Tempat Buang Air Besar Sebagian Besar Keluarga di Kecamatan Kuta Raja, 2019–2021
Number of Villages by Toilet Facility Used by Majority Family in Kuta Raja Subdistrict, 2019–2021

Fasilitas Tempat Buang Air Besar <i>Toilet Facility</i>	2019	2020	2021
(1)	(2)	(3)	(4)
Jamban/Toilet			
Sendiri/ <i>Private</i>	6	6	6
Bersama/ <i>Shared</i>	-	-	-
Umum/ <i>Public</i>	-	-	-
Bukan Jamban/<i>Non-Toilet</i>	-	-	-
Jumlah/Total	6	6	6

Sumber/Source: BPS, Pendataan Potensi Desa (Podes) 2019–2021/BPS-Statistics Indonesia, Village Potential Data Collecting 2019–2021

Tabel
Table 4.3.5

Banyaknya Gampong Menurut Jenis Bahan Bakar untuk Memasak yang Digunakan Sebagian Besar Keluarga di Kecamatan Kuta Raja, 2021
Number of Villages by Type of Cooking Fuel Used by Majority Family in Kuta Raja Subdistrict, 2021

Jenis Bahan Bakar untuk Memasak <i>Type of Cooking Fuel</i>	2021
(1)	(2)
Listrik/ <i>Electric</i>	-
Elpiji 5,5 kg/ <i>Blue Gas 5.5 kg-LPG</i>	-
Elpiji 12 kg/ <i>12 kg-LPG</i>	-
Elpiji 3 kg/ <i>3 kg-LPG</i>	6
Gas Kota/ <i>City Gas</i>	-
Biogas/ <i>Biogas</i>	-
Minyak Tanah/ <i>Kerosene</i>	-
Briket/ <i>Briquettes</i>	-
Arang/ <i>Charcoal</i>	-
Kayu Bakar/ <i>Firewood</i>	-
Lainnya/ <i>Others</i>	-
Jumlah/<i>Total</i>	6

Sumber/*Source*: BPS, Pendataan Potensi Desa (Podes) 2021/BPS-Statistics Indonesia, Village Potential Data Collecting 2021

4.4 AGAMA DAN SOSIAL LAINNYA RELIGION AND OTHER SOCIAL AFFAIRS

Tabel 4.4.1 Jumlah Tempat Peribadatan Menurut Gampong di Kecamatan Kuta Raja, 2021
Table 4.4.1 Number of Worship Places by Villages in Kuta Raja Subdistrict, 2021

Gampong Village	Masjid Mosque	Mushola Pray Room	Gereja Protestan Protestant Church	Gereja Katholik Catholic Church	Pura Temple	Vihara
(1)	(2)	(3)	(4)	(5)	(6)	(7)
Lampaseh Kota	1	3	-	-	-	-
Merduati	3	3	-	-	-	-
Keudah	1	1	-	-	1	-
Peulanggahan	1	1	-	-	-	-
Gampong Jawa	1	-	-	-	-	-
Gampong Pande	1	1	-	-	-	-
Kecamatan Kuta Raja	8	9	-	-	1	-

Sumber/Source: BPS, Pendataan Potensi Desa (Podes) 2021/BPS-Statistics Indonesia, Village Potential Data Collecting 2021

Tabel 4.4.2
Table

Banyaknya Kejadian Bencana Alam Menurut Gampong dan Jenis Bencana Alam di Kecamatan Kuta Raja, 2020
Number of Natural Disaster Events by Villages and Type of Natural Disaster in Kuta Raja Subdistrict, 2020

Gampong Village	Gempa Bumi Earthquake	Tsunami Tsunami	Gunung Meletus Volcanic Eruption	Tanah Longsor Landslide
(1)	(2)	(3)	(4)	(5)
Lampaseh Kota	-	-	-	-
Merduati	-	-	-	-
Keudah	-	-	-	-
Peulanggahan	-	-	-	-
Gampong Jawa	-	-	-	-
Gampong Pande	-	-	-	-
Kecamatan Kuta Raja	-	-	-	-

Lanjutan Tabel/*Continued Table 4.4.2*

Gampong Village	Banjir Floods	Banjir Bandang Flash Floods	Kekeringan Drought	Kebakaran Hutan dan Lahan Forest and Land Fires
(1)	(6)	(7)	(8)	(9)
Lampaseh Kota	-	-	-	-
Merduati	-	-	-	-
Keudah	-	-	-	-
Peulanggahan	-	-	-	-
Gampong Jawa	-	-	-	-
Gampong Pande	-	-	-	-
Kecamatan Kuta Raja	-	-	-	-

Lanjutan Tabel/*Continued Table* 4.4.2

Gampong Village	Angin Puyuh/ Puting Beliung/ Topan Tornado/Typhoon	Gelombang Pasang Tidal Wave	Abrasi Abrasion
(1)	(10)	(11)	(12)
Lampaseh Kota	-	-	-
Merduati	-	-	-
Keudah	-	-	-
Peulanggahan	-	-	-
Gampong Jawa	-	-	-
Gampong Pande	-	-	-
Kecamatan Kuta Raja	-	-	-

Sumber/*Source*: BPS, Pendataan Potensi Desa (Podes) 2021/*BPS-Statistics Indonesia, Village Potential Data Collecting 2021*

Tabel 4.4.3
Table

Banyaknya Korban Jiwa Akibat Bencana Alam Menurut Gampong dan Jenis Bencana Alam di Kecamatan Kuta Raja, 2020
Number of Fatalities Due to Natural Disasters by Villages and Type of Natural Disaster in Meraxa Subdistrict, 2020

Gampong Village	Gempa Bumi Earthquake	Tsunami Tsunami	Gunung Meletus Volcanic Eruption	Tanah Longsor Landslide
(1)	(2)	(3)	(4)	(5)
Lampaseh Kota	-	-	-	-
Merduati	-	-	-	-
Keudah	-	-	-	-
Peulanggahan	-	-	-	-
Gampong Jawa	-	-	-	-
Gampong Pande	-	-	-	-
Kecamatan Kuta Raja	-	-	-	-

Lanjutan Tabel/*Continued Table* 4.4.3

Gampong Village	Banjir Floods	Banjir Bandang Flash Floods	Kekeringan Drought	Kebakaran Hutan dan Lahan Forest and Land Fires
(1)	(6)	(7)	(8)	(9)
Lampaseh Kota	-	-	-	-
Merduati	-	-	-	-
Keudah	-	-	-	-
Peulanggahan	-	-	-	-
Gampong Jawa	-	-	-	-
Gampong Pande	-	-	-	-
Kecamatan Kuta Raja	-	-	-	-

Lanjutan Tabel/*Continued Table 4.4.3*

Gampong Village	Angin Puyuh/ Puting Beliung/ Topan Tornado/Typhoon	Gelombang Pasang Tidal Wave	Abrasi Abrasion
(1)	(10)	(11)	(12)
Lampaseh Kota	-	-	-
Merduati	-	-	-
Keudah	-	-	-
Peulanggahan	-	-	-
Gampong Jawa	-	-	-
Gampong Pande	-	-	-
Kecamatan Kuta Raja	-	-	-

Sumber/*Source*: BPS, Pendataan Potensi Desa (Podes) 2021/*BPS-Statistics Indonesia, Village Potential Data Collecting 2021*

Tabel 4.4.4
Table

Keberadaan Fasilitas/Upaya Antisipasi/Mitigasi Bencana Alam Menurut Gampong di Kecamatan Kuta Raja, 2021
Existence of Facilities/Efforts for Anticipation/Mitigation of Natural Disasters by Villages by Villages in Kuta Raja Subdistrict, 2021

Gampong Village	Sistem Peringatan Dini Bencana Alam <i>Natural Disaster Early Warning System</i>	Sistem Peringatan Dini Khusus Tsunami <i>Tsunami Early Warning System</i>	Perlengkapan Keselamatan <i>Safety Equipment</i>
(1)	(2)	(3)	(4)
Lampaseh Kota	Tidak Ada	Tidak Ada	Tidak Ada
Merduati	Tidak Ada	Tidak Ada	Tidak Ada
Keudah	Ada	Tidak Ada	Tidak Ada
Peulanggahan	Tidak Ada	Tidak Ada	Tidak Ada
Gampong Jawa	Tidak Ada	Tidak Ada	Tidak Ada
Gampong Pande	Tidak Ada	Tidak Ada	Tidak Ada
Kecamatan Kuta Raja			

Lanjutan Tabel/*Continued Table 4.4.4*

Gampong Village	Rambu-Rambu dan Jalur Evakuasi Bencana <i>Sign and Evacuation Route</i>	Pembuatan, Perawatan, atau Normalisasi: Sungai, Kanal, Tanggul, Parit, Drainase, Waduk, Pantai, dll <i>Manufacture, Maintenance, or Normalization: Rivers, Canals, Embankment, etc</i>
(1)	(5)	(6)
Lampaseh Kota	Ada	Ada
Merduati	Ada	Ada
Keudah	Ada	Ada
Peulanggahan	Ada	Ada
Gampong Jawa	Ada	Ada
Gampong Pande	Ada	Ada
Kecamatan Kuta Raja		

Sumber/*Source*: BPS, Pendataan Potensi Desa (Podes) 2021/*BPS-Statistics Indonesia, Village Potential Data Collecting 2021*

Tabel 4.4.5
Table

Banyaknya Gampong yang Memiliki Kelompok Kegiatan Olahraga Menurut Jenis Olahraga dan Ketersediaan Fasilitas/Lapangan Olahraga di Kecamatan Kuta Raja, 2021

Number of Villages Having Sport Activities Groups by Type of Sport and Availability of Sport Facilities/Fields in Kuta Raja Subdistrict, 2021

Jenis Olahraga <i>Type of Sport</i>	Kondisi Fasilitas/Lapangan Olahraga <i>Condition of Sport Facilities/Fields</i>			Tidak Ada Fasilitas/ Lapangan Olahraga <i>No Sport Facilities/ Fields</i>
	Baik	Rusak Sedang	Rusak Parah	
(1)	(2)	(3)	(4)	(5)
Sepak Bola/ <i>Soccer</i>	3	-	-	3
Bola Voli/ <i>Volley Ball</i>	5	-	-	1
Bulu Tangkis/ <i>Badminton</i>	2	-	-	4
Bola Basket/ <i>Basket Ball</i>	-	-	-	6
Tenis Lapangan/ <i>Court Tennis</i>	-	-	-	6
Tenis Meja/ <i>Table Tennis</i>	2	-	-	4
Futsal/ <i>Futsal</i>	2	-	-	4
Renang/ <i>Swimming</i>	-	-	-	6
Bela Diri/ <i>Martial Arts</i>	-	-	-	6
Bilyard/ <i>Billiards</i>	-	-	-	6
Fitnes, Aerobik, dll/ <i>Fitness, Aerobics, etc</i>	-	-	-	6
Lainnya/ <i>Others</i>	6	-	-	-

Sumber/Source: BPS, Pendataan Potensi Desa (Podes) 2021/BPS-Statistics Indonesia, Village Potential Data Collecting 2021

Tabel 4.4.6 Jumlah Kejahatan Menurut Gampong di Kecamatan Kuta Raja, 2022
Table Number of Crimes by Villages in Kuta Raja Subdistrict, 2022

Gampong Village	Pembunuhan Murder	Penganiayaan Persecution	KDRT Domestic Violence	Perkosaan Rape
(1)	(2)	(3)	(4)	(5)
Lampaseh Kota	-	1	-	-
Merduati	-	1	-	-
Keudah	-	1	-	-
Peulanggahan	-	-	-	-
Gampong Jawa	-	1	-	-
Gampong Pande	-	-	-	-
Kecamatan Kuta Raja	-	4	-	-

Lanjutan Tabel/*Continued Table 4.4.6*

Gampong Village	Pencurian Biasa Ordinary Theft	Pencurian Kendaraan Bermotor Motorbike Theft	Narkotika dan Psikotropika Narcotics and Psychotropics	Penipuan Fraud
(1)	(6)	(7)	(8)	(9)
Lampaseh Kota	1	1	-	-
Merduati	1	1	-	-
Keudah	-	4	-	-
Peulanggahan	-	-	-	1
Gampong Jawa	-	-	-	-
Gampong Pande	-	-	-	-
Kecamatan Kuta Raja	2	6	-	1

Sumber/*Source*: Kepolisian Sektor Kuta Raja/*Kuta Raja Sektor Sector Police*

Tabel 4.4.7 Jumlah Nikah, Cerai Gugat, dan Cerai Talak Menurut Gampong di Kecamatan Kuta Raja, 2022
Number of Marriages, Divorce by Talak, and Divorce by Petition by Villages in Kuta Raja Subdistrict, 2022

Gampong Village	Nikah¹ Marriages	Cerai Gugat² Divorce by Petition	Cerai Talak³ Divorce by Talak
(1)	(2)	(3)	(4)
Lampaseh Kota	4	1	4
Merduati	9	6	2
Keudah	1	4	-
Peulanggahan	7	4	2
Gampong Jawa	7	2	2
Gampong Pande	5	-	-
Kecamatan Kuta Raja	33	17	10

Sumber/Source: ¹Kantor Urusan Agama (KUA) Kecamatan Kuta Raja/Kuta Raja Subdistrict Religious Affairs Office
^{2,3}Mahkamah Syar'iyah Kelas I-A Kota Banda Aceh/Shariah Court Class I-A Banda Aceh Municipality

Tabel
Table 4.4.8

Jumlah Dayah, Balai Pengajian, TPA, dan Majelis Ta'lim Menurut Gampong di Kecamatan Kuta Raja, 2022
Number of Dayah, Islamic Recitation, Al-Qur'an Recitation House, and Majelis Ta'lim Villages in Kuta Raja Subdistrict, 2022

Gampong Village	Dayah Dayah	Balai Pengajian Islamic Recitation	TPA Al-Qur'an Recitation House	Majelis Ta'lim Majelis Ta'lim
(1)	(2)	(3)	(4)	(5)
Lampaseh Kota	-	-	5	-
Merduati	-	1	5	2
Keudah	-	1	3	1
Peulanggahan	1	4	3	2
Gampong Jawa	1	3	2	1
Gampong Pande	1	4	1	-
Kecamatan Kuta Raja	3	13	19	6

Sumber/Source: Dinas Pendidikan Dayah Kota Banda Aceh/Dayah Education Office of Banda Aceh Municipality

BAB 5

PERTANIAN



Tabel
Table 5.1

Luas Panen Tanaman Sayuran dan Buah-buahan Semusim Menurut Jenis Tanaman di Kecamatan Kuta Raja (ha), 2019–2022
Harvested Area of Seasonal Vegetables and Fruits by Kind of Plant in Kuta Raja Subdistrict (ha), 2019–2022

Jenis Tanaman Kind of Plants	2019	2020	2021	2022 ^x
(1)	(2)	(3)	(4)	(5)
Sayuran/Vegetables:				
Bawang Merah/Shallots	-	-	-	-
Bawang Putih/Garlic	-	-	-	-
Cabai Besar/Chili/Big Chili	-	-	-	-
Petsai/Sawi/Chinese Cabbage/ Mustard Green	-	-	-	-
Kentang/Potato	-	-	-	-
Kangkung/Water Spinach	-	-	-	-
Bayam/Spinach	-	-	-	-
Jamur/Mushroom	-	-	-	-

Sumber/Source: BPS, Statistik Pertanian Hortikultura SPH-SBS/BPS-Statistics Indonesia, Agricultural Statistic for Horticulture SPH-SBS

Tabel
Table 5.2

Produksi Tanaman Sayuran dan Buah-buahan Semusim Menurut Jenis Tanaman di Kecamatan Kuta Raja (kuintal), 2019–2022
Production of Seasonal Vegetables and Fruits by Kind of Plant in Kuta Raja Subdistrict (quintal), 2019–2022

Jenis Tanaman <i>Kind of Plants</i>	2019	2020	2021	2022 ^x
(1)	(2)	(3)	(4)	(5)
Sayuran/Vegetables:				
Bawang Merah/ <i>Shallots</i>	-	-	-	-
Bawang Putih/ <i>Garlic</i>	-	-	-	-
Cabai Besar/ <i>Chili/Big Chili</i>	-	-	-	-
Petsai/Sawi/ <i>Chinese Cabbage/ Mustard Green</i>	-	-	-	-
Kentang/ <i>Potato</i>	-	-	-	-
Kangkung/ <i>Water Spinach</i>	-	-	-	-
Bayam/ <i>Spinach</i>	-	-	-	-
Jamur/ <i>Mushroom</i>	-	-	-	-

Sumber/Source: BPS, Statistik Pertanian Hortikultura SPH-SBS/BPS-Statistics Indonesia, Agricultural Statistic for Horticulture SPH-SBS

Tabel
Table 5.3

**Luas Panen Tanaman Biofarmaka Menurut Jenis Tanaman
di Kecamatan Kuta Raja (m²), 2019–2022**
**Harvested Area of Medicinal Plants by Kind of Plant in Kuta
Raja Subdistrict (m²), 2019–2022**

Jenis Tanaman Kind of Plants	2019	2020	2021	2022 ^x
(1)	(2)	(3)	(4)	(5)
Jahe/Ginger	-	-	-	-
Kencur/East Indian Galangal	-	-	-	-
Kunyit/Turmeric	-	-	-	-
Laos/Lengkuas/Galanga	-	-	-	-
Kapulaga/Java Cardamom	-	-	-	-
Temulawak/Java Turmeric	-	-	-	-

Sumber/Source: BPS, Statistik Pertanian Hortikultura SPH-TBF/BPS-Statistics Indonesia, Agricultural Statistic for Horticulture SPH-TBF

Tabel 5.4 **Produksi Tanaman Biofarmaka Menurut Jenis Tanaman di Kecamatan Kuta Raja (kg), 2019–2022**
Table **Production of Medicinal Plants by Kind of Plant in Kuta Raja Subdistrict (kg), 2019–2022**

Jenis Tanaman Kind of Plants	2019	2020	2021	2022 ^x
(1)	(2)	(3)	(4)	(5)
Jahe/Ginger	-	-	-	-
Kencur/East Indian Galangal	-	-	-	-
Kunyit/Turmeric	-	-	-	-
Laos/Lengkuas/Galangal	-	-	-	-
Kapulaga/Java Cardamom	-	-	-	-
Temulawak/Java Turmeric	-	-	-	-

Sumber/Source: BPS, Statistik Pertanian Hortikultura SPH-TBF/BPS-Statistics Indonesia, Agricultural Statistic for Horticulture SPH-TBF

Tabel
Table 5.5

**Luas Panen Tanaman Hias Menurut Jenis Tanaman di
Kecamatan Kuta Raja (m²), 2019–2022**
**Harvested Area of Ornamental Plants by Kind of Plant in
Kuta Raja Subdistrict (m²), 2019–2022**

Jenis Tanaman Kind of Plants	2019	2020	2021	2022 ^x
(1)	(2)	(3)	(4)	(5)
Anggrek/ <i>Orchid</i>	-	-	-	-
Krisan/ <i>Chrysantemum</i>	-	-	-	-
Mawar/ <i>Rose</i>	-	-	-	-
Sedap Malam/ <i>Tuberose</i>	-	-	-	-
Euphorbia/ <i>Euphorbia</i>	-	-	-	-
Keladi Hias/ <i>Calladium</i>	-	-	-	-

Sumber/Source: BPS, Statistik Pertanian Hortikultura SPH-TH/BPS-Statistics Indonesia, *Agricultural Statistik for Horticulture SPH-TH*

Tabel 5.6
Table

**Produksi Tanaman Hias Menurut Jenis Tanaman di
Kecamatan Kuta Raja (tangkai), 2019–2022**
**Production of Ornamental Plants by Kind of Plant in Kuta
Raja Subdistrict (stalks), 2019–2022**

Jenis Tanaman <i>Kind of Plants</i>	2019	2020	2021	2022 ^x
(1)	(2)	(3)	(4)	(5)
Anggrek/ <i>Orchid</i>	-	-	-	-
Krisan/ <i>Chrysantemum</i>	-	-	-	-
Mawar/ <i>Rose</i>	-	-	-	-
Sedap Malam/ <i>Tuberose</i>	-	-	-	-
Euphorbia/ <i>Euphorbia</i>	-	-	-	-
Keladi Hias/ <i>Calladium</i>	-	-	-	-

Sumber/Source: BPS, Statistik Pertanian Hortikultura SPH-TH/BPS-Statistics Indonesia, Agricultural Statistik for Horticulture SPH-TH

Tabel 5.7
Table

Produksi Buah-Buahan dan Sayuran Tahunan Menurut Jenis Tanaman di Kecamatan Kuta Raja (kuintal), 2019–2022

Production of Annual Fruits and Vegetables by Kind of Plant in Kuta Raja Subdistrict (quintal), 2019–2022

Jenis Tanaman <i>Kind of Plants</i>	2019	2020	2021	2022 ^x
(1)	(2)	(3)	(4)	(5)
Buah–Buahan/Fruits:				
Alpukat/ <i>Avocado</i>	-	-	-	-
Belimbing/ <i>Star Fruit</i>	17	16	29	20
Jambu Air/ <i>Water Apple</i>	4	13	13	65
Jambu Biji/ <i>Guava</i>	8	14	11	15
Mangga/ <i>Mango</i>	107	166	420	120
Melinjo/ <i>Gnetum/Melinjo</i>	-	-	-	-
Nangka/ <i>Cempedak/Jackfruit</i>	63	187	81	62
Pepaya/ <i>Papaya</i>	168	148	99	94
Pisang/ <i>Banana</i>	80	81	38	43
Rambutan/ <i>Rambutan</i>	12	22	11	13
Salak/ <i>Snakefruit</i>	-	-	-	-
Sawo/ <i>Sapodilla/Sawo</i>	4	4	3	28
Sirsak/ <i>Soursop</i>	5	8	8	11
Sukun/ <i>Breadfruit</i>	-	-	-	-

Sumber/Source: BPS, Statistik Pertanian Hortikultura SPH-BST/BPS-Statistics Indonesia, *Agricultural Statistic for Horticulture SPH-BST*

Tabel 5.8 Jumlah Ternak Besar Menurut Jenisnya per Gampong di Kecamatan Kuta Raja, 2022
Table 5.8 Number of Large Livestock by Type per Gampong in Kuta Raja Subdistrict, 2022

Gampong Village	Sapi Cow	Kerbau Buffalo	Kambing/Domba Goat/Sheep	Total Total
(1)	(2)	(3)	(4)	(5)
Lampaseh Kota	-	-	7	7
Merduati	-	-	-	-
Keudah	-	-	39	39
Peulanggahan	-	-	20	20
Gampong Jawa	-	-	41	41
Gampong Pande	-	-	11	11
Kecamatan Kuta Raja	-	-	118	118

Sumber/Source: Dinas Pangan, Pertanian, Kelautan, dan Perikanan Kota Banda Aceh/Food, Agriculture, Marine, and Fishery Service of Banda Aceh Municipality

Tabel
Table 5.9

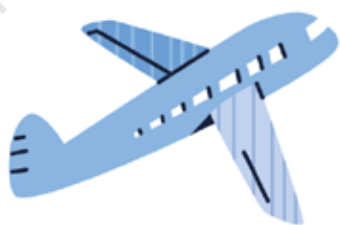
**Jumlah Ternak Unggas Menurut Jenisnya per Gampong di
Kecamatan Kuta Raja, 2022**
**Number of Poultry Livestock by Type per Gampong in Kuta
Raja Subdistrict, 2022**

Gampong Village	Ayam Chicken	Itik Duck	Total Total
(1)	(2)	(3)	(4)
Lampaseh Kota	50	-	50
Merduati	-	-	-
Keudah	-	-	-
Peulanggahan	-	-	-
Gampong Jawa	10	56	66
Gampong Pande	21	15	36
Kecamatan Kuta Raja	81	71	152

Sumber/Source: Dinas Pangan, Pertanian, Kelautan, dan Perikanan Kota Banda Aceh/*Food, Agriculture, Marine, and Fishery Service of Banda Aceh Municipality*

BAB 6

PARIWISATA, TRANSPORTASI, DAN KOMUNIKASI



6.1 PARIWISATA TOURISM

Tabel 6.1.1 Jumlah Sarana Akomodasi Menurut Gampong dan Jenis Akomodasi di Kecamatan Kuta Raja, 2021
Table *Number of Accomodation Facilities by Villages and Type of Accomodation in Kuta Raja Subdistrict, 2021*

Gampong Village	Hotel Hotel	Penginapan Inn
(1)	(2)	(3)
Lampaseh Kota	-	-
Merduati	-	-
Keudah	1	-
Peulanggahan	-	-
Gampong Jawa	-	-
Gampong Pande	-	-
Kecamatan Kuta Raja	1	-

Sumber/Source: BPS, Pendataan Potensi Desa (Podes) 2021/BPS-Statistics Indonesia, Village Potential Data Collecting 2021

6.2 TRANSPORTASI TRANSPORTATION

Tabel 6.2.1 Prasarana dan Sarana Transportasi Antar Gampong Menurut Gampong di Kecamatan Kuta Raja, 2021
Table *Inter-Villages/Kelurahan Transportation Infrastructure and Facilities by Villages/Kelurahan in Kuta Raja Subdistrict, 2021*

Gampong Village	Jenis Prasarana Transportasi Type of Transportation Infrastructure	Keberadaan Angkutan Umum Availability of Public Transportation
(1)	(2)	(3)
Lampaseh Kota	Darat	Ada, tanpa trayek tetap
Merduati	Darat	Ada, tanpa trayek tetap
Keudah	Darat	Ada, tanpa trayek tetap
Peulanggahan	Darat	Ada, tanpa trayek tetap
Gampong Jawa	Darat	Ada, tanpa trayek tetap
Gampong Pande	Darat	Ada, tanpa trayek tetap

Lanjutan Tabel/*Continued Table 6.2.1*

Gampong Village	Jenis Permukaan Jalan Darat Terluas Type of The Widest Road Surface	Dapat Dilalui Kendaraan Bermotor Roda 4 atau Lebih Passable by Vehicle with 4 or more Wheels
(1)	(4)	(5)
Lampaseh Kota	Aspal/Beton	Sepanjang tahun
Merduati	Aspal/Beton	Sepanjang tahun
Keudah	Aspal/Beton	Sepanjang tahun
Peulanggahan	Aspal/Beton	Sepanjang tahun
Gampong Jawa	Aspal/Beton	Sepanjang tahun
Gampong Pande	Aspal/Beton	Sepanjang tahun

Sumber/*Source*: BPS, Pendataan Potensi Desa (Podes) 2021/*BPS-Statistics Indonesia, Village Potential Data Collecting 2021*

6.3 KOMUNIKASI COMMUNICATION

Tabel 6.3.1 Keberadaan Kantor Pos/Pos Pembantu/Rumah Pos, Pos Keliling, dan Perusahaan/Agen Jasa Ekspedisi Swasta Menurut Gampong di Kecamatan Kuta Raja, 2021
Number of Post Office/Subsidiary of Post Office, Mobile Portal Service, Private Expedition Service Company by Villages/Kelurahan in Kuta Raja Subdistrict, 2021

Gampong Village	Kantor Pos/Pos Pembantu/Rumah Pos Post Office/Subsidiary of Post Office	Pos Keliling Mobile Portal Service	Perusahaan/Agen Jasa Ekspedisi Swasta Private Expedition Service Company
(1)	(2)	(3)	(4)
Lampaseh Kota	Tidak ada	Tidak ada	Tidak ada
Merduati	Beroperasi	Tidak ada	Beroperasi
Keudah	Beroperasi	Tidak ada	Beroperasi
Peulanggahan	Tidak ada	Tidak ada	Tidak ada
Gampong Jawa	Tidak ada	Tidak ada	Tidak ada
Gampong Pande	Tidak ada	Tidak ada	Tidak ada

Sumber/Source: BPS, Pendataan Potensi Desa (Podes) 2021/BPS-Statistics Indonesia, Village Potential Data Collecting 2021

Tabel 6.3.2
Table

Jumlah Menara Telepon seluler dan Operator Layanan Komunikasi Telepon Seluler Menurut Gampong di Kecamatan Kuta Raja, 2021
Number of Base Transceiver Station (BTS) and Cellular Phone Communication Service Operators by Villages in Kuta Raja Subdistrict, 2021

Gampong Village	Jumlah Menara Telepon seluler Number of Base Transceiver Station (BTS)	Jumlah Operator Layanan Komunikasi Telepon Seluler Cellular Phone Communication Service Operators
(1)	(2)	(3)
Lampaseh Kota	-	6
Merduati	2	6
Keudah	1	6
Peulanggahan	1	6
Gampong Jawa	3	6
Gampong Pande	-	6
Kecamatan Kuta Raja	7	6

Sumber/Source: BPS, Pendataan Potensi Desa (Podes) 2021/BPS-Statistics Indonesia, Village Potential Data Collecting 2021

Tabel 6.3.3
Table

Kekuatan Sinyal Telepon Seluler dan Jenis Sinyal Internet Telepon Seluler Menurut Gampong di Kecamatan Kuta Raja, 2021
The Strenght of Cellular Phone Signal by Villages/Kelurahan in Kuta Raja Subdistrict, 2021

Gampong Village	Kekuatan Sinyal Telepon Seluler The Strenght of Cellular Phone Signal	Jenis Sinyal Internet Telepon Seluler Type of Cellular Phone Signal
(1)	(2)	(3)
Lampaseh Kota	Sinyal sangat kuat	4G/LTE
Merduati	Sinyal sangat kuat	4G/LTE
Keudah	Sinyal sangat kuat	4G/LTE
Peulanggahan	Sinyal sangat kuat	4G/LTE
Gampong Jawa	Sinyal sangat kuat	4G/LTE
Gampong Pande	Sinyal kuat	4G/LTE

Sumber/Source: BPS, Pendataan Potensi Desa (Podes) 2021/BPS-Statistics Indonesia, Village Potential Data Collecting 2021

BAB 7

PERBANKAN, KOPERASI, DAN PERDAGANGAN



Tabel 7.1
Table

Banyaknya Sarana Lembaga Keuangan Bank Menurut Gampong dan Jenis Bank di Kecamatan Kuta Raja, 2021
Number of Bank by Villages and Type of Bank in Kuta Raja Subdistrict, 2021

Gampong Village	Bank Umum Pemerintah Government Bank	Bank Umum Swasta Private Bank	Bank Perkreditan Rakyat (BPR) Rural Bank
(1)	(2)	(3)	(4)
Lampaseh Kota	-	-	-
Merduati	-	1	-
Keudah	-	-	-
Peulanggahan	-	-	-
Gampong Jawa	-	-	-
Gampong Pande	-	-	-
Kecamatan Kuta Raja	-	1	-

Sumber/Source: BPS, Pendataan Potensi Desa (Podes) 2021/BPS-Statistics Indonesia, Village Potential Data Collecting 2021

Tabel 7.2
Table

Banyaknya Koperasi Aktif Menurut Menurut Gampong dan Jenis Koperasi di Kecamatan Kuta Raja, 2021
Number of Cooperative by Villages and Type of Cooperative in Kuta Raja Subdistrict, 2021

Gampong Village	Koperasi Unit Desa (KUD) Village Cooperative Unit	Koperasi Industri Kecil dan Kerajinan Rakyat (Kopinkra) Small Industry and Citizen Handicraft Cooperative
(1)	(2)	(3)
Lampaseh Kota	-	-
Merduati	-	-
Keudah	-	-
Peulanggahan	-	-
Gampong Jawa	-	-
Gampong Pande	-	-
Kecamatan Kuta Raja	-	-

Lanjutan Tabel/*Continued Table 7.2*

Gampong Village/Kelurahan	Koperasi Simpan Pinjam (Kospin) Savings and Loan Cooperative	Koperasi Lainnya Other Cooperative
(1)	(4)	(5)
Lampaseh Kota	-	-
Merduati	1	-
Keudah	-	-
Peulanggahan	-	-
Gampong Jawa	-	-
Gampong Pande	-	-
Kecamatan Kuta Raja	1	-

Sumber/*Source*: BPS, Pendataan Potensi Desa (Podes) 2021/*BPS-Statistics Indonesia, Village Potential Data Collecting 2021*

Tabel 7.3
Table

Banyaknya Sarana Perdagangan Menurut Gampong dan Jenis Sarana Perdagangan di Kecamatan Kuta Raja, 2021
Number of Trade Facilities by Villages and Type of Trade Facilities in Kuta Raja Subdistrict, 2021

Gampong Village	Kelompok Pertokoan Shopping Complexs	Pasar dengan Bangunan Permanen Markets in Permanent Building	Pasar dengan Bangunan Semi Permanen Market in Semi Permanent Building
(1)	(2)	(3)	(4)
Lampaseh Kota	1	-	-
Merduati	4	-	-
Keudah	1	-	-
Peulanggahan	-	-	-
Gampong Jawa	-	-	-
Gampong Pande	-	-	-
Kecamatan Kuta Raja	6	-	-

Lanjutan Tabel/*Continued Table 7.3*

Gampong Village/Kelurahan	Pasar tanpa Bangunan Market without Permanent Building	Mini Market/ Swalayan/ Supermarket Mini Market/Swalayan/ Supermarket	Restoran/ Rumah Makan Restaurant/ Food Stall
(1)	(5)	(6)	(7)
Lampaseh Kota	-	3	-
Merduati	-	2	-
Keudah	-	-	-
Peulanggahan	-	-	-
Gampong Jawa	-	-	-
Gampong Pande	-	-	-
Kecamatan Kuta Raja	-	5	-

Sumber/Source: BPS, Pendataan Potensi Desa (Podes) 2021/BPS-Statistics Indonesia, Village Potential Data Collecting 2021

DATA

MENCERDASKAN BANGSA



**BADAN PUSAT STATISTIK
KOTA BANDA ACEH**

Jln. Laksamana Malahayati Km 6,5 Desa Baet
Kab.Aceh Besar Telp/Fax: (0651) 8012501
Email : bps1171@bps.go.id