

# KECAMATAN CIKAJANG DALAM ANGKA

# 2017



**BADAN PUSAT STATISTIK  
KABUPATEN GARUT**



# **KECAMATAN CIKAJANG DALAM ANGKA**

# **2017**



**BADAN PUSAT STATISTIK  
KABUPATEN GARUT**

# **Kecamatan Cikajang Dalam Angka *Subdistrict Cikajang In Figures* 2017**

ISBN : -  
No. Publikasi/*Publication Number* : 32050.1725  
Katalog BPS /*BPS Catalog* : 1102001.3205120  
Ukuran Buku/*Book Size* : 21 x 15 cm  
Jumlah Halaman/*Number of Pages* : ix + 55 hal

**Naskah/*Manuscript*:**

Koordinator Statistik Kecamatan (*KSK*) Cikajang  
*Subdistrict Statistics Coordinator Cikajang*

**Gambar Kover oleh/*Cover Designed by*:**

Koordinator Statistik Kecamatan (*KSK*) Cikajang  
*Subdistrict Statistics Coordinator Cikajang*

**Diterbitkan oleh/*Published by*:**

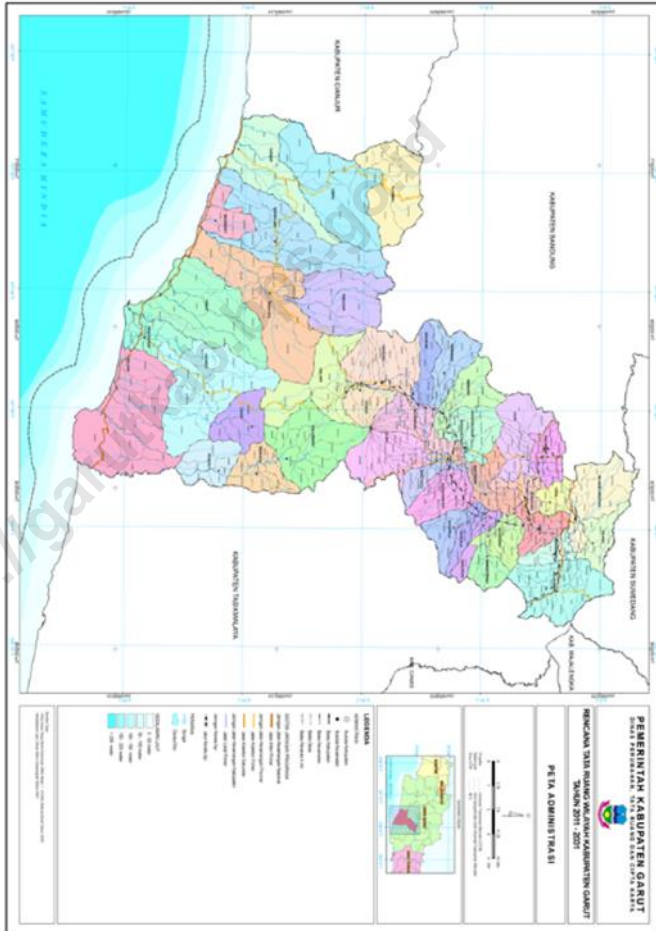
© BPS Kabupaten Garut/*BPS-Statistics of Garut Regency*

**Dicetak oleh/*Printed by*:**

**Dilarang mengumumkan, mendistribusikan, mengomunikasikan,  
dan/atau menggandakan sebagian atau seluruh isi buku ini untuk tujuan  
komersial tanpa izin tertulis dari Badan Pusat Statistik**

*Prohibited to announce, distribute, communicate, and/or copy part or all of  
this book for commercial purpose without permission from BPS-Statistics  
Indonesia*

**PETA WILAYAH KABUPATEN GARUT**  
*MAP OF GARUT REGENCY*





**KEPALA BPS KABUPATEN GARUT**  
*CHIEF STATISTICIAN OF GARUT REGENCY*



**Berdikarjaya, SE., MM**







## KATA PENGANTAR

Puji syukur kami panjatkan ke khadirat Allah SWT atas rahmat dan hidayah-Nya, publikasi Kecamatan Cikajang Dalam Angka Tahun 2017 dapat diselesaikan sesuai dengan rencana.

Publikasi **Kecamatan Cikajang Dalam Angka Tahun 2017**, ini menginformasikan berbagai data sekunder dari dinas/instansi Pemerintah maupun Swasta yang berada di wilayah lingkungan Kecamatan Cikajang, Kabupaten Garut dan data primer hasil sensus dan survei yang dilakukan oleh BPS Kabupaten Garut.

Dengan terbitnya Publikasi ini, mudah-mudahan dapat memenuhi kebutuhan konsumen data, khususnya data untuk kecamatan Cikajang ini. Walaupun demikian kami menyadari bahwa Publikasi ini belum bisa memenuhi semua kebutuhan konsumen data, untuk itu kritik dan saran sangat kami hargai guna perbaikan publikasi di masa yang akan datang.

Akhirnya kepada semua pihak yang telah membantu terbitnya publikasi ini, kami ucapkan terima kasih.

Garut, Agustus 2017  
Kepala BPS Kabupaten Garut

Berdikarjaya, SE., MM  
**NIP.198210082001121001**



*Thank God we pray to Allah's khadirat for His mercy and guidance, Cikajang District publication In Figures 2017 can be completed in accordance with the plan.*

*Publication of **Cikajang Sub-district In Figures Year 2017**, it informs various secondary data from Governmental and Private offices located in Cikajang District, Garut Regency and primary data of census and survey conducted by BPS Garut regency.*

*With the publication of this publication, hopefully can meet the needs of data consumers, especially data for this Cikajang district. Nevertheless we are aware that this publication has not been able to meet all the needs of data consumers, for which critics and suggestions are highly appreciated for the improvement of future publications.*

*Finally to all those who have helped to publish this publication, we thank you.*

*Garut, August 2017  
Chief Statistician of  
Garut Regency*

*Berdikarjaya, SE., MM*

## Daftar Tabel

### (List of Tables)

| Tabel                         | Hal.   |   |
|-------------------------------|--|---|
| <b>BAB. I LETAK GEOGRAFIS</b> |  |   |
| <b>(Geografis Location)</b>   |  |   |
| 1. 01                         | : Jarak Antar Desa/Kelurahan di Kecamatan Cikajang Tahun 2016<br><i>Spacing Village / Ex urahan in District Cikajang, 2016</i>   | 2 |
| 1. 02                         | : Tinggi Rata-Rata dari Permukaan Laut dan Luas Daerah Menurut /Kel tahun 2016<br><i>High Mean Sea Level And Size Of Regions According to the village / Ex 2016</i>  | 3 |
| 1. 03                         | : Letak Geogerafis Desa/Kelurahan di Kecamatan Cikajang, Tahun 2016<br><i>Location of Geogerafis Village / Village in District Cikajang, 2016</i>  | 4 |
| <b>BAB. II PEMERINTAHAN</b>   |  |   |
| <b>(Government)</b>           |  |   |
| 2.01                          | : Jumlah Pegawai Desa/Kelurahan Menurut Jabatan Dan Jenis Kelamin di Kecamatan Cikajang, Tahun 2016<br><i>Number of Employees Village / Village According to the Position And Gender In Sub Cikajang, 2016</i> | 6 |
| 2.02                          | : Jumlah Pegawai Negri Sipil Menurut Golongan di Kecamatan Cikajang tahun 2016<br><i>The number of Civil Affairs Officer, TKK, TKS in District Cikajang, 2016</i>  | 7 |
| 2.03                          | : Jumlah Dusun, RW/RK dan RT di Kecamatan Cikajang, Tahun 2016<br><i>The number of Hamlet, RW / RK and RT in District Cikajang, 2016</i>   | 8 |

|                |   |   |    |
|----------------|---|---|----|
| 2.04           | : | Luas Wilayah Desa/Kel dirincin Menurut Lahan Pertanian dan Non Pertanian Di Kec Cikajang, Tahun 2016<br><i>Area of Rural Areas / Ex specified According to the Agricultural and Non-Agricultural Land In Cikajang district,2016</i> | 9  |
| <b>BAB.III</b> |   | <b>PENDUDUK<br/>(Population)</b>  |    |
| 3.01           | : | Jumlah Penduduk Menurut Jenis Kelamin di Kecamatan Cikajang, Tahun 2016<br><i>Total Population by Gender in District Cikajang, 2016</i>   | 12 |
| 3.02           | : | Jumlah Penduduk Menurut Kelompok Umur dan Jenis Kelamin Di Kec Cikajang, Tahun 2016<br><i>Population by Age Group and Gender In Cikajang District, 2016</i>   | 13 |
| 3.03           | : | Jumlah Penduduk Menurut Kelompok Usia di Kecamatan Cikajang, Tahun 2016<br><i>Total Population by Age Group In Sub Cikajang, 2016</i>   | 14 |
| 3.04           | : | Kepadatan Penduduk Menurut Desa/ Kel di Kec Cikajang, Tahun 2016<br><i>According to the Population Density Rural / Ex In Cikajang District, 2016</i>  | 15 |
| 3.05           | : | Jumlah Penduduk, Rmtg dan Rata-rata Anggota Rmtg Menurut Desa/ Kel di Kecamatan Cikajang, Tahun 2016<br><i>Population, and average Rmtg Members Rmtg According to the Village / Ex In Sub Cikajang, 2016</i>                        | 16 |
| 3.06           | : | Jumlah Penduduk menurut pekerjaan utama tahun 2016<br><i>Population by main occupation Cikajang Subdistrict 2016</i>  | 17 |

|               |  |    |
|---------------|--|----|
| <b>BAB.IV</b> | <b>SOSIAL</b>  |    |
|               | <b>(Social)</b>  |    |
| 4.1.01        | : Jumlah Sekolah, Murid dan Guru Taman Kanak-Kanak (TK) menurut Desa/Kel di Kecamatan Cikajang, Tahun 2016<br><i>Number of Schools, Students and Teachers Kindergarten (TK) According to the Village / Ex In Sub Cikajang, 2016</i>  | 20 |
| 4.1.02        | : Jumlah Sekolah, Murid dan Guru Sekolah Dasar (SD) Dilingkungan Dinas Pendidikan Menurut Desa/Kel Di Kecamatan Cikajang, Tahun 2016<br><i>Number of Schools, Students and Teachers Elementary School (SD) Department of Education According to the the village's environment / Ex In Sub Cikajang, 2016</i>   | 21 |
| 4.1.03        | : Jumlah Sekolah Dasar (SD) perkelas Dilingkungan Dinas Pendidikan Menurut Desa/ Kel Di Kecamatan Cikajang, Tahun 2016<br><i>Number of Students and Elementary School (SD) Department of Education According to the the village's environment / Ex In Sub Cikajang, 2016</i>   | 22 |
| 4.1.04        | : Jumlah Ruang kelas yang dimiliki menurut kondisi bangunan Sekolah Dasar (SD) Dilingkungan Dinas Pendidikan Menurut Desa/ Kel Di Kecamatan Cikajang, Tahun 2016<br><i>Number of classrooms owned by the condition of elementary school buildings (SD) Department of Education According to the the village's environment / Ex In Sub Cikajang, 2016</i> | 23 |
| 4.1.05        | : Jumlah Keadaan Guru menurut status pegawai Sekolah Dasar (SD) Dilingkungan Dinas Pendidikan Menurut Desa/ Kel Di Kecamatan Cikajang, Tahun 2016<br><i>Number of teacher Elementary School (SD) Department of Education According to the the village's environment / Ex In Sub Cikajang, 2016</i>   | 24 |

List of Tables

|        |  |    |
|--------|--|----|
| 4.1.06 | : Jumlah Guru Sekolah Dasar (SD) menurut Status Pendidikan Dilingkungan Dinas Pendidikan Menurut Desa/ Kel Di Kecamatan Cikajang, Tahun 2016<br><i>Number of Teachers and Elementary School (SD) Department of Education According to the the village's environment / Ex In Sub Cikajang, 2016</i> | 25 |
| 4.1.07 | : Jumlah Sekolah, Murid dan Guru Madrasah Ibtidaiyah (MI) dan SD swasta Menurut Desa/ Kel Di Kecamatan Cikajang, Tahun 2016<br><i>Number of Schools, Students and Teachers Elementary School (MI) and private elementary According to the Village / Ex In Sub Cikajang, 2016</i>                   | 26 |
| 4.1.08 | : Jumlah Sekolah, Murid dan Guru Sekolah Menengah Tingkat Pertama(SMP) Dilingkungan Dinas Pendidikan di Kecamatan Cikajang, Tahun 2016<br><i>Number of Schools, Students and Teachers Junior High School (SMP) Department of Education's environment In Sub Cikajang, 2016</i>                     | 27 |
| 4.1.09 | : Jumlah Sekolah, Murid dan Guru Madrasah Tsanawiyah (MTs) Menurut Desa/Kel Kecamatan Cikajang, Tahun 2016<br><i>Number of Schools, Students and Teachers MTs (MTs) According to the village / subdistrict Ex Cikajang, 2016</i>   | 28 |
| 4.1.10 | : Jumlah Sekolah, Murid Dan Guru Sekolah Menengah Umum (SMU) Dilingkungan Dinas Pendidikan Menurut Desa/Kel di Kecamatan Cikajang, Tahun 2016<br><i>Number of Schools, Students and Teachers High School (SMU) environment Village / Ex In Sub Cikajang 2016</i>                                   | 29 |
| 4.1.11 | : Jumlah Sekolah, Murid Dan Guru Madrasah Aliyah(MA) Menurut Desa/Kel Kecamatan Cikajang, Tahun 2016<br><i>Number of Schools, Students and Teachers Madrasah Aliyah (MA) According to the village / subdistrict Ex Cikajang, 2016</i>  | 30 |

|        |   |    |
|--------|---|----|
| 4.1.12 | : Jumlah Sekolah, Murid Dan Guru Sekolah Menengah Kejuruan (SMK) Dilingkungan Dinas Pendidikan Menurut Desa/Kel Kecamatan Cikajang, Tahun 2016<br><i>Number of Schools, Students and Teachers Vocational School (SMK) environment village / subdistrict Ex Cikajang, 2016</i> | 31 |
| 4.1.13 | : Jumlah Pondok Pesantren, Pengasuh dan Santri Menurut Desa/Kel Kecamatan Cikajang, Tahun 2016<br><i>The number of boarding school, Caregiver and Pupils According to the village / subdistrict Ex Cikajang, 2016</i>   | 32 |
| 4.2.01 | : Jumlah Sarana Fasilitas Kesehatan Menurut Desa/Kel. Di Kecamatan Cikajang, Tahun 2016<br><i>Total Facilities Health Facilities According to the village / Ex. In Sub Cikajang, 2016</i>   | 33 |
| 4.2.02 | : Jumlah Tenaga Kesehatan Menurut Desa/Kel di Kec. Cikajang, Tahun 2016<br><i>Number of Health Workers According to the village / Ex In Sub Cikajang, 2016</i>  | 35 |
| 4.2.03 | : Jumlah Peserta Akseptor KB menurut Jenis Alat Kontrasepsi di Kecamatan Cikajang, Tahun 2016<br><i>The number of family planning acceptors Participants by Type of Contraception in District Cikajang, 2015</i>  | 36 |
| 4.2.04 | : Jumlah Pasangan Usia Subur (PUS) menurut Kelompok Umur di Kecamatan Cikajang, Tahun 2016.<br><i>Number of Eligible Spouse (EFA) by Age Group in District Cikajang, 2016</i>   | 38 |
| 4.2.05 | : Jumlah Penduduk menurut Pentahapan Keluarga Sejahtera di Kecamatan Cikajang, Tahun 2016<br><i>Population by Phasing Family Welfare in District Cikajang, 2016</i>   | 39 |
| 4.3.01 | : Jumlah Pemeluk Agama menurut Agama yang Dianut di Kecamatan Cikajang, Tahun 2016  | 40 |

List of Tables

|              |  |    |
|--------------|--|----|
|              | <i>The number of adherent according Religion Religion Embraced in District Cikajang, 2016</i>  |    |
| 4.3.02       | : Jumlah Tempat Peribadatan di Kecamatan Cikajang, Tahun 2016<br><i>Total Places of Worship In The District of Cikajang, 2016</i>  | 41 |
| 4.3.03       | : Jumlah Perkawinan per Bulan Menurut Desa/Kel. di Kecamatan Cikajang, Tahun 2016<br><i>The number of marriages per Month according to rural / Ex. in District Cikajang, 2016</i>                              | 42 |
| 4.4.01       | : Jumlah Lapangan Olah Raga Menurut Jenis Kegiatan di Kecamatan Cikajang, Tahun 2016<br><i>Number Field Sports by Type of Activity in District Cikajang, 2016</i>  | 44 |
| 4.4.02       | : Jumlah Penyandang Cacat Menurut Jenis Kecacatan di Kecamatan Cikajang, Tahun 2016<br><i>Number of Persons with Disabilities by Type of Disability in District Cikajang, 2016</i>                             | 45 |
| <b>BAB.V</b> | <b>PERTANIAN<br/>(Agriculture)</b>   |    |
| 5.1.01       | : Luas Lahan Sawah dan Lahan Bukan Sawah Menurut Desa/Kel. di Kecamatan Cikajang, Tahun 2016<br><i>Area Wetland and not paddy According to the Village / Ex. in District Cikajang, 2016</i>                    | 48 |
| 5.1.02       | : Luas Lahan (Ha), Produksi (Kwintal) Tanaman Bawang Daun Menurut desa/kel di Kecamatan Cikajang, Tahun 2016 (Ha)<br><i>Land Area Harvested (Ha), Production (kwintal) of onion in District Cikajang, 2016</i> | 49 |
| 5.1.03       | : Luas Lahan (Ha), Produksi (Kwintal) Tanaman Kentang Menurut desa/kel di Kecamatan Cikajang, Tahun 2016 (Ha)<br><i>Land Area Harvested (Ha), Production (kwintal) of Potatos in District Cikajang, 2016</i>   | 50 |



|        |   |    |
|--------|---|----|
| 5.1.04 | : Luas Lahan (Ha), Produksi (Kwintal) Tanaman Kol Menurut desa/kel di Kecamatan Cikajang, Tahun 2016 (Ha)<br><i>Land Area Harvested (Ha), Production (kwintal) of Cabbage in District Cikajang, 2016 (Ha)</i>               | 51 |
| 5.1.05 | : Luas Lahan (Ha), Produksi (Kwintal) Tanaman petsai Menurut desa/kel di Kecamatan Cikajang, Tahun 2016 (Ha)<br><i>Land Area Harvested (Ha), Production (kwintal) of Pecai in District Cikajang, 2016 (Ha)</i>              | 52 |
| 5.1.06 | : Luas Lahan (Ha), Produksi (Kwintal) Tanaman Wortel Menurut desa/kel di Kecamatan Cikajang, Tahun 2016 (Ha)<br><i>Land Area Harvested (Ha), Production (kwintal) of Carrot in District Cikajang, 2016 (Ha)</i>             | 53 |
| 5.1.07 | : Luas Lahan (Ha), Produksi (Kwintal) Tanaman Kacang Tanah Menurut desa/kel di Kecamatan Cikajang, Tahun 2016 (Ha)<br><i>Land Area Harvested (Ha), Production (kwintal) of Kidney bean in District Cikajang, 2016 (Ha)</i>  | 54 |
| 5.1.08 | : Luas Lahan (Ha), Produksi (Kwintal) Tanaman Cabai Keriting Menurut desa/kel di Kecamatan Cikajang, Tahun 2016 (Ha)<br><i>Land Area Harvested (Ha), Production (kwintal) of Red pepper in District Cikajang, 2016 (Ha)</i> | 55 |
| 5.1.09 | : Luas Lahan (Ha), Produksi (Kwintal) Tanaman Tomat Menurut desa/kel di Kecamatan Cikajang, Tahun 2016 (Ha)<br><i>Land Area Harvested (Ha), Production (kwintal) of Tomato in District Cikajang, 2016 (Ha)</i>              | 56 |
| 5.1.10 | : Luas Lahan (Ha), Produksi (Kwintal) Tanaman Buncis Menurut desa/kel di Kecamatan Cikajang, Tahun 2016 (Ha)<br><i>Land Area Harvested (Ha), Production (kwintal) of Stringbean in District Cikajang, 2016 (Ha)</i>         | 57 |

|               |  |    |
|---------------|--|----|
| 5.1.11        | : Luas Lahan (Ha), Produksi (Kwintal) Tanaman Labu Menurut desa/kel Siam di Kecamatan Cikajang, Tahun 2016 (Ha)<br><i>Land Area Harvested (Ha), Production (kwintal) of Vegetable marrow in District Cikajang, 2016 (Ha)</i> | 58 |
| 5.1.12        | : Produksi, Tanaman Buah-buahan Menurut Jenis Tanaman di Kecamatan Cikajang, Tahun 2016 (kwintal)<br><i>Production, Plant Fruits by Type Plants in District Cikajang, 2016 (quintals)</i>                                    | 59 |
| 5.1.13        | : Luas Tanam dan Produksi Tanaman Perkebunan menurut Jenis Komoditi di Kecamatan Cikajang, Tahun 2016<br><i>Planted and Plantation Crops Production by Type of Commodity in District Cikajang, 2016</i>                      | 60 |
| 5.2.01        | : Populasi Jumlah Ternak Menurut Jenis Ternak di Kecamatan Cikajang, Tahun 2016<br><i>Number of Livestock Population by Type of Livestock in District Cikajang, 2016</i>   | 61 |
| 5.2.02        | : Populasi Jumlah Unggas Menurut Jenis Unggas di Kecamatan Cikajang, Tahun 2016<br><i>Total Population by Type Poultry Poultry in District Cikajang, 2016</i>  | 62 |
| 5.3.01        | : Luas Lahan Tempat Pemeliharaan/Penangkapan Perikanan Darat di Kecamatan Cikajang, Tahun 2016<br><i>The Land Area Maintenance / Fishing Inland Fisheries in Sub Cikajang, 2016</i>  | 63 |
| <b>BAB.VI</b> | <b>INDUSTRI<br/>(Industry)</b>   |    |
| 6.01          | : Banyaknya Industri Kecil/ Kerajinan Rumah Tangga di Kecamatan Cikajang, Tahun 2016   | 66 |

*Number of Small Industry / Crafts Households in District  
Cikajang, 2016*

- |      |   |  |    |
|------|---|--|----|
| 6.02 | : | Jumlah Kegiatan Usaha di Kecamatan Cikajang, Tahun 2016<br><i>Number of Operations in the District Cikajang,<br/>2016</i>  | 67 |
| 6.03 | : | Jumlah Toko di Kecamatan Cikajang, Tahun 2016<br><i>Number of Stores in District Cikajang, 2016</i>  | 69 |
| 6.04 | : | Jumlah Lembaga Keuangan Menurut Desa/Kel<br>Kecamatan Cikajang, Tahun 2016<br><i>Number of Financial Institutions According to the village<br/>/ subdistrict Ex Cikajang, 2016</i> | 70 |

<https://garutkab.bps.go.id>



## Ulasan Singkat

### **Bab. 1. Letak Geografis**

Kecamatan Cikajang mempunyai luas wilayah sekitar 12.039,09 Ha<sup>2</sup>, dengan memiliki ketinggian antara 1.200 – 1.300 meter dari permukaan air laut dan memiliki batas-batas wilayah sebagai berikut ;

- Sebelah Utara, berbatasan dengan Kecamatan Cisirupan dan Cigedug
- Sebelah Timur, berbatasan dengan Kecamatan Banjarwangi
- Sebelah Selatan, berbatasan dengan Kecamatan Pakenjeng dan Cisompet
- Sebelah Barat, berbatasan dengan Kecamatan Pamulihan, Kecamatan Cikajang sebagian besar desa-desanya terletak didaerah Dataran.

### **Bab. 2. Pemerintahan**

Data yang disajikan pada Bab Pemerintahan, mencakup data-

## **Short review**

### *Chapter.1. Geographical location*

Kecamatan Cikajang has an area of about 12,039.09 Ha<sup>2</sup>, with a height between 1,200 - 1,300 meters above sea level and has the following regional boundaries;

- North side, adjacent to District of Cisirupan and Cigedug
- East side, adjacent to District Banjarwangi
- South side, adjacent to District Pakenjeng and Cisompet
- West side, adjacent to District of Pamulihan,

Kecamatan Cikajang most of the villages are located in the Dataran area.

### *Chapter. 2. Government*

The data presented in Government Chapter includes data; data; Pemerintahan, Aparatur dan data Luas Wilayah.

Kecamatan Cikajang tahun 2016 meliputi sebanyak 12 Desa/kelurahan yang terbagi dalam 37 Dusun, 111 Rukun Warga (RW)/Rukun Kampung (RK) dan sebanyak 496 Rukun Tetangga (RT) .

Adapun jumlah Aparat Desa sebanyak 96 orang dengan komposisi 86 orang Laki-laki dan 10 orang berjenis kelamin perempuan.

### **Bab. 3 Kependudukan**

Pada Bab ini dapat dijumpai beragam tabel-tabel yang berhubungan dengan masalah penduduk, seperti jumlah penduduk, penduduk menurut kelompok umur, Untuk mendapatkan data kependudukan yang akurat dan senantiasa tepat waktu, berbagai cara telah dilakukan BPS antara lain melalui Sensus Penduduk (SP), Survei Kependudukan dan Survei Sosial Ekonomi Nasional. Penduduk. Sensus Penduduk diadakan setiap sepuluh tahun sekali pada tahun-  
Government, apparatus and data Area Area.

Cikajang sub-district in 2016 includes 12 villages divided into 37 Dusun, 111 Rukun Warga (RW) / Rukun Kampung (RK) and 496 neighborhood units (RT).

As for the number of village officials as many as 96 people with the composition of 86 men and 10 women female.

### *Chapter. 3 Population*

In this chapter we can find various tables related to population problems, such as population, population by age group, To obtain accurate and timely population data, various ways have been done by BPS, among others through Population Census (SP), Survey Population and National Socio-Economic Survey. Population. The Population Census is held every ten years in calendar years that end in zero, with the primary aim of obtaining information on  
tahun kalender yang berakhir angka nol, dengan tujuan utama

untuk memperoleh informasi ciri-ciri demografi dan sosial-ekonomi. Sensus Penduduk yang pertama kali diselenggarakan setelah Indonesia merdeka adalah pada tahun 1961, kedua tahun 1971 kemudian tahun 1980, tahun 1990, tahun 2000 dan yang terakhir pada tahun 2010.

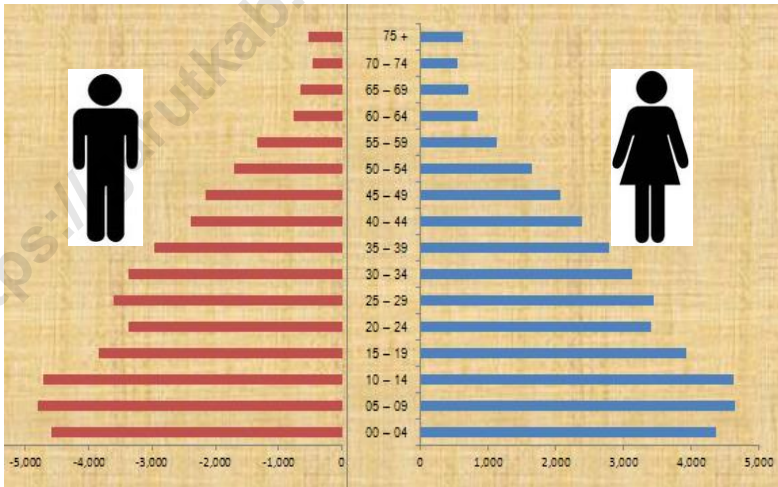
to be established after Indonesia's independence was in 1961, the second in 1971 and then in 1980, 1990, 2000 and the last in 2010.

Gambar :

**Piramida Penduduk  
Kecamatan Cikajang  
Tahun 2016**

Picture :

*The population pyramid  
District Cikajang  
Year 2016*



demographic and socio-economic features. The first Population Census

Jumlah penduduk Kecamatan Cikajang pada tahun 2016 sebanyak 86.182 jiwa dan jumlah rumahtangga

## Short Review

sebanyak 21.687 rumahtangga, dengan banyaknya jiwa atau anggota rumahtangga antara 3 sampai 4 orang. Hal ini jelas sangat mempengaruhi beban dari setiap rumahtangga, karena dengan semakin banyaknya anggota rumahtangga jelas akan meningkatkan beban tanggungan dari rumahtangga tersebut, terutama kepala rumahtangga.

Dengan memiliki luas wilayah sekitar 120,39 Km<sup>2</sup> menjadikan setiap Km<sup>2</sup> nya rata-rata dihuni sebanyak 710 jiwa dengan sebaran yang tidak merata pada setiap desanya yang terakumulasi di Desa Padasuka dengan tingkat kepadatan penduduk setiap Km<sup>2</sup> nya mencapai 624 jiwa sedangkan tingkat kepadatan terendah terdapat di Desa Karamatwangi

The population of Kecamatan Cikajang in 2016 is 86,182 people and the number of households is 21,687 households,

with the number of souls or household members between 3 to 4 people. This obviously greatly affects the burden of each household, as the increasing number of household members will obviously increase the dependent burden of the household, especially the head of the household.

With an area of about 120.39 km<sup>2</sup> making each km<sup>2</sup> on average inhabited as many as 710 people with uneven distribution in each village that is terakumulasi in Padasuka Village with the density of the population every Km<sup>2</sup> reaches 624 people while the lowest density is in the Village Karamatwangi which is only inhabited by about 245 soul per Ha<sup>2</sup>.

yang hanya didiami oleh sekitar 245 jiwa setiap Ha<sup>2</sup>.

Dengan jumlah penduduk yang besar jelas, merupakan suatu tantangan yang dihadapi oleh pemerintah, terutama dalam hal



penyediaan lapangan kerja, pendidikan, kesehatan dan aspek-aspek lainnya.

#### ***Bab. 4 . Sosial***

Kebijakan Pembangunan dibidang sosial menyangkut berbagai aspek yang memang dirasakan sangat kompleks. Karena selain berdampak terhadap masalah ekonomi juga berdampak pada masalah sosial politik masyarakat. Bahkan keberhasilan pembangunan dibidang sosial dapat dievaluasi dan dijadikan sebagai indikator tahun-tahun selanjutnya. Keberhasilan pembangunan dalam bidang sosial tidak hanya dapat dilihat dari bentuk fisik saja namun juga harus dilihat secara keseluruhan yaitu dari segi fisik maupun dari segi non fisik.

With a large population clear, is a challenge faced by the government, especially in terms of providing employment, education, health and other aspects.

#### Chapter. 4. Social

Development policy in the social field concerning various aspects that are felt very complex. Because in addition to impact on economic problems also impact on socio-political issues of society. Even the success of development in the social field can be evaluated and used as an indicator for the next years. The success of development in the social field not only can be seen from the physical form but also must be seen as a whole that is in terms of physical and non-physical terms.

Salah satu upaya dari pemerintah Kabupaten Garut dalam rangka pembangunan sosial budaya adalah dengan mengupayakan berbagai program yang langsung menyentuh masyarakat sebagai sasarannya diantaranya pembangunan di bidang pendidikan,

kesehatan dan Keluarga Berencana, bidang Agama serta bidang sosial lainnya.

Pada bab ini data mengenai pendidikan menyajikan jumlah sekolah, murid dan guru menurut tingkatan pendidikan yang di mulai dari tingkat TK/RA sampai Sekolah Menengah (SMU/SMK/MA) termasuk data mengenai pondok pesantren.

Data mengenai kesehatan pada bab ini menyajikan jumlah sarana dan fasilitas kesehatan yang ada dikecamatan Cikajang mulai dari Puskesmas, Pustu sampai posyandu, termasuk jumlah tenaga kesehatan itu sendiri mulai dari dokter sampai dukun beranak. Data

One of the efforts of Garut regency government in the framework of socio-cultural development is to seek a variety of programs that directly touch the community as a target among them development in the field of education, health and family

planning, religion and other social fields.

In this chapter the data on education presents the number of schools, pupils and teachers according to education levels ranging from TK / RA to High School (SMU / SMK / MA) including data on boarding schools.

Health data in this chapter presents the number of health facilities and facilities available in Cikajang district from Puskesmas, Pustu to Posyandu, including the number of health workers themselves ranging from doctors to dukun beranak. Data relating to Women of Infertile Couples (EFA) in this chapter are presented starting yang berhubungan dengan Wanita Pasangan Usia Subur (PUS) dalam bab ini disajikan mulai dari jumlah PUS menurut kelompok usia, keikutsertaan berKB termasuk jenis KB yang digunakan.

Data mengenai Agama dalam bab ini menyajikan ; jumlah

penduduk menurut agama yang dianut, tempat peribadatan, perkawinan, Sarana Olah Raga termasuk juga Penyandang Cacat.

### **Bab. 5 . Pertanian**

Dalam struktur perekonomian Kabupaten Garut, sektor pertanian merupakan sektor yang sangat dominan, termasuk kecamatan Cikajang untuk sektor pertanian merupakan sektor yang dominan. Untuk ulasan sektor pertanian ini data dikelompokkan dalam beberapa kelompok yakni sebagai berikut ;

Komoditi-komoditi pertanian yang masuk kedalam kelompok Pertanian Tanaman Pangan meliputi

from the number of EFAs by age group, the participation of the KB family including the type of family planning used.

Religion data in this chapter presents; the number of people according to the religion adopted, the place of worship, the marriage,

the Sports Facilities including the Handicapped.

### *Chapter. 5. Agriculture*

In the economic structure of Garut Regency, agriculture sector is a very dominant sector, including Cikajang sub-district for agriculture sector is the dominant sector. For the agriculture sector, the data are grouped into groups as follows;

Agricultural commodities that enter into the group of Food Crops Agriculture includes vegetable *plant crops Vegetables, as the main commodity in District Cikajang. As*

pertanian tanaman tanaman Sayuran , sebagai komoditi utama di Kecamatan Cikajang. Adapun informasi yang dapat ditampilkan didalam sub bab ini mengenai tambah tanam, jumlah luas panen dan jumlah produksi untuk masing-masing komoditi.

Adapun komoditi yang masuk dalam kelompok perkebunan ini meliputi Perkebunan Swasta dan Perkebunan Rakyat, seperti komoditi tanaman Teh, Kopi dll.

Hutan selain berfungsi secara biologis juga dapat berfungsi secara ekonomis. Dimana fungsi hutan secara ekonomis sering dikaitkan dengan produksi hasil hutan itu sendiri, yaitu berupa kayu dan non kayu.

Data mengenai peternakan yang terkaper disini adalah populasi ternak besar, kecil dan unggas,. Adapun yang termasuk dalam katagori ternak disini terdiri dari sapi perah, kerbau, kambing dan domba, sementara yang termasuk kedalam katagori unggas adalah ayam ras, ayam buras dan itik. itik manila. Ada pula perikanan darat terutama di kolam.

*for the information that can be presented in this sub-section on added cropping, the amount of harvested area and the amount of production for each commodity.*

*The commodities included in this plantation group include Private Plantations and Smallholders Plantations, such as tea plant commodities, coffee etc.*

*Forests in addition to biological functions can also be economical. Where the forest function is economically often associated with the production of forest products itself, namely in the form of wood and non timber.*

*Data on livestock farmed here are large, small and poultry populations. The livestock category consists of dairy cattle, buffaloes, goats and sheep, while those included in the category of poultry are chicken breeds, domestic poultry*

**Bab. 6 . Industri**

Dalam rangka memasuki era pembangunan pertumbuhan industri dan era globalisasi, peran industri kecil sangat besar sekali, sehingga dalam hal ini pembinaan dan pengembangan perlu untuk terus ditingkatkan baik secara kualitas maupun kuantitas. Selain itu dalam perkembangannya usaha industri kecil ini selalu melibatkan berbagai aspek diantaranya bahan baku, permodalan/ investasi, mesin/alat produksi, tenaga kerja, manajemen, promosi dan pemasaran.

Informasi yang dapat disampaikan pada bab ini meliputi industri kecil, kegiatan usaha, termasuk toko, warung serta lembaga keuangan.

*and duck. There is also a land fishery, especially in the pond.*

**Chapter. 6. Industry**

*In order to enter the era of development of industrial growth and the era of globalization, the role of small industries is very large, so in this case the development and development need to be improved both in quality and quantity. In addition, in the development of this small industry business always involves various aspects such as raw materials, capital / investment, machinery / production equipment, labor, management, promotion and marketing.*

*Information that can be presented in this chapter includes small industries, business activities, including shops, stalls and financial institutions.*



<https://garkrab.bps.go.id>

***BAB 1***  
***KONDISI GEOGRAFI***  
***GEOGRAPHY***

<https://garutkab.bps.go.id>



**Tabel. 1. 01 : Jarak Antar Desa/Kelurahan di Kecamatan Cikajang, Tahun 2016**

*Table. 1. 01 : Spacing Village / Ex urahan in District Cikajang, 2016*

| Desa/Kel           | Cipangramatan | Mekarjaya | Girijaya | Giriawas | . Cibodas | . Cikajang | Padasuka | Mekarsari | Simpang | Cikandang | Margamulya | Karamatwangi |
|--------------------|---------------|-----------|----------|----------|-----------|------------|----------|-----------|---------|-----------|------------|--------------|
| (1)                | (2)           | (3)       | (4)      | (5)      | (6)       | (7)        | (8)      | (9)       | (10)    | (11)      | (12)       | (13)         |
| 001. Cipangramatan | 0             | 10.2      | 12.3     | 11.8     | 11.3      | 14.8       | 15.6     | 16.6      | 19.8    | 21.8      | 21.8       | 7,8          |
| 002. Mekarjaya     | 10.2          | 0         | 2        | 3.2      | 3.7       | 4.8        | 5.4      | 6.4       | 9.8     | 11.8      | 11.8       | 18           |
| 003. Girijaya      | 12.3          | 2         | 0        | 1.9      | 1.7       | 2.8        | 3.4      | 4.4       | 7.8     | 9.8       | 9.8        | 20,1         |
| 004. Giriawas      | 11.8          | 3.2       | 1.9      | 0        | 1,5       | 2,6        | 3,2      | 4,2       | 7.6     | 9.6       | 9.6        | 21,6         |
| 005. Cibodas       | 11.3          | 3.7       | 1.7      | 1,5      | 0         | 1,1        | 1,7      | 2,7       | 6.1     | 8.1       | 8.1        | 21,1         |
| 006. Cikajang      | 14.8          | 4.8       | 2.8      | 2,6      | 1,1       | 0          | 0,6      | 1,6       | 5       | 7         | 7          | 22,6         |
| 007. Padasuka      | 15.6          | 5.4       | 3.4      | 3,2      | 1,7       | 0,6        | 0        | 1         | 4.4     | 6.4       | 6.4        | 23,4         |
| 008. Mekarsari     | 16.6          | 6.4       | 4.4      | 4,2      | 2,7       | 1,6        | 1        | 0         | 3.4     | 5.4       | 5.4        | 24,4         |
| 009. Simpang       | 19.8          | 9.8       | 7.8      | 7.6      | 6.1       | 5          | 4.4      | 3.4       | 0       | 2         | 2          | 27,6         |
| 010. Cikandang     | 21.8          | 11.8      | 9.8      | 9.6      | 8.1       | 7          | 6.4      | 5.4       | 2       | 0         | 0.4        | 29,6         |
| 011. Margamulya    | 21.8          | 11.8      | 9.8      | 9.6      | 8.1       | 7          | 6.4      | 5.4       | 2       | 0.4       | 0          | 29,6         |
| 012. Karamatwangi  | 7,8           | 18        | 20,1     | 21,6     | 21,1      | 22,6       | 23,4     | 24,4      | 27,6    | 29,6      | 29,6       | 0            |

**Tinggi Rata-Rata Dari Permukaan Laut Dan Luas Daerah Menurut Desa /Kel Tahun 2016**  
*Table. 1. 02 : High Mean Sea Level And Size Of Regions According to the village / Ex 2016*

| Desa/Kel           | Tinggi rata-rata dari permukaan laut (m) | Luas Daerah (Ha <sup>2</sup> ) | % Luas Desa terhadap Kecamatan |
|--------------------|--|--------------------------------|--------------------------------|
| (1)                | (2)                                      | (3)                            | (4)                            |
| 001. Cipangramatan | 1.268                                    | 1.756,00                       | 14,47                          |
| 002. Mekarjaya     | 1.288                                    | 790,95                         | 6,52                           |
| 003. Girijaya      | 1.286                                    | 281,10                         | 2,32                           |
| 004. Giriawas      | 1.278                                    | 1.495,01                       | 12,32                          |
| 005. Cibodas       | 1.276                                    | 206,80                         | 1,70                           |
| 006. Cikajang      | 1.277                                    | 100,10                         | 0,82                           |
| 007. Padasuka      | 1.276                                    | 110,23                         | 0,91                           |
| 008. Mekarsari     | 1.272                                    | 210,00                         | 1,73                           |
| 009. Simpang       | 1.280                                    | 2.036,00                       | 16,77                          |
| 010. Cikandang     | 1.287                                    | 1.199,21                       | 9,88                           |
| 011. Margamulya    | 1.289                                    | 1.809,96                       | 14,91                          |
| 012. Karamatwangi  | 1.268                                    | 2.144,00                       | 17,66                          |
| Jumlah             |  | 12.139,35                      | 100                            |

*Sumber : Desa*

**Tabel. 1. 03 : Letak Geografis Desa/Kelurahan di Kecamatan Cikajang, Tahun 2016**  
**Table. 1. 03 : Location of Geografis Village / Village in District Cikajang, 2016**

| Desa               | Pesisir/<br>Tepi Pantai | Bukan Pesisir               |                           |         |
|--------------------|-------------------------|-----------------------------|---------------------------|---------|
|                    |                         | Lembah/A<br>liran<br>Sungai | Lereng/pung<br>gung Bukit | Dataran |
| (1)                | (2)                     | (3)                         | (4)                       | (5)     |
| 001. Cipangramatan | -                       | -                           | V                         | -       |
| 002. Mekarjaya     | -                       | -                           | -                         | V       |
| 003. Girijaya      | -                       | -                           | -                         | V       |
| 004. Giriawas      | -                       | -                           | -                         | V       |
| 005. Cibodas       | -                       | -                           | -                         | V       |
| 006. Cikajang      | -                       | -                           | -                         | V       |
| 007. Padasuka      | -                       | -                           | -                         | V       |
| 008. Mekarsari     | -                       | -                           | -                         | V       |
| 009. Simpang       | -                       | -                           | -                         | V       |
| 010. Cikandang     | -                       | -                           | -                         | V       |
| 011. Margamulya    | -                       | -                           | -                         | V       |
| 012. Karamatwangi  | -                       | -                           | V                         | -       |

Sumber :Desa

Government

<https://garutkab.bps.go.id>

***BAB 2***  
***PEMERINTAHAN***  
***GOVERNMENT***

<https://garut.bps.go.id>

Government

<https://garutkab.bps.go.id>

**Jumlah Pegawai Desa/Kelurahan Menurut  
Tabel. 2.01 : Jabatan  
Dan Jenis Kelamin Di Kecamatan Cikajang,  
Tahun 2016**

*Table. 2.01 : Number of Employees Village / Village According  
to the Position And Gender In Sub Cikajang, 2016*

| Struktur Jabatan  | Laki-laki | Perempuan | Jumlah    |
|-------------------|-----------|-----------|-----------|
| (1)               | (2)       | (3)       | (4)       |
| Kepala Desa       | 12        | -         | 12        |
| Sekretaris Desa   | 11        | 1         | 12        |
| Kaur Pemerintahan | 9         | 3         | 12        |
| Kaur Kesra        | 9         | 3         | 12        |
| Kaur Umum         | 11        | 1         | 12        |
| Kaur Trantib      | 12        |           | 12        |
| Kaur Pembangunan  | 11        | 1         | 12        |
| Lain -lain        | 9         | 3         | 12        |
| <b>Jumlah</b>     | <b>84</b> | <b>12</b> | <b>96</b> |

*Sumber : Desa*

**Tabel. 2.02 : Jumlah Pegawai Negri Sipil,TKK, TKS di Kecamatan Cikajang, Tahun 2016**

*Table. 2.02 : The number of Civil Affairs Officer, TKK, TKS in District Cikajang, 2016*

| Kerja Unit       | Jumlah orang |           |            | Jumlah     |
|------------------|--------------|-----------|------------|------------|
|                  | PNS          | TKK       | TKS        |            |
| Kecamatan Kantor | 20           | 4         | 3          | 27         |
| Pendidikan UPTD  | 22           | 1         | 5          | 28         |
| SDN              | 210          | -         | 221        | 431        |
| Puskesmas        | 26           | 5         | 26         | 57         |
| KB UPTD          | 4            | 2         | -          | 6          |
| BP3K UPTD        | 4            | 5         | 1          | 10         |
| SMPN             | 61           | -         | 71         | 132        |
| SMAN             | 22           | -         | 30         | 52         |
| Kehutanan UPTD   | 4            | -         | -          | 4          |
| SDAP UPTD        | 8            | -         | -          | 8          |
| Perkebunan UPTD  | 3            | -         | 1          | 4          |
| KUA              | 5            | -         | 2          | 7          |
| UPTD Peternakan  | 2            | -         | -          | 2          |
| Perindagpas UPTD | 7            | 1         | 15         | 23         |
| Pertacip UPTD    | 1            | -         | -          | 1          |
| Pertanian UPTD   | 1            | 1         | 1          | 3          |
| Perhubungan UPTD | 3            | 7         | 11         | 21         |
| <b>Jumlah</b>    | <b>403</b>   | <b>26</b> | <b>387</b> | <b>816</b> |

Sumber : Kantor Kecamatan



**Tabel. 2.03 : Jumlah Dusun, RW/RK dan RT di Kecamatan Cikajang, Tahun 2016**

*Table. 2.03 : The number of Hamlet, RW / RK and RT in District Cikajang, 2016*

| Desa/Kel           | Dusun | RW/RK | RT  |
|--------------------|-------|-------|-----|
| (1)                | (3)   | (4)   | (5) |
| 001. Cipangramatan | 4     | 8     | 43  |
| 002. Mekarjaya     | 3     | 7     | 42  |
| 003. Girijaya      | 3     | 10    | 58  |
| 004. Giriawas      | 3     | 11    | 43  |
| 005. Cibodas       | 3     | 10    | 46  |
| 006. Cikajang      | 3     | 7     | 23  |
| 007. Padasuka      | 3     | 7     | 36  |
| 008. Mekarsari     | 3     | 9     | 35  |
| 009. Simpang       | 3     | 9     | 61  |
| 010. Cikandang     | 3     | 13    | 43  |
| 011. Margamulya    | 3     | 14    | 34  |
| 012. Karamatwangi  | 3     | 6     | 32  |
| Jumlah             | 37    | 111   | 496 |

*Sumber :Desa*

**Tabel. 2. 04 : Luas Wilayah Desa/Kel dirinci Menurut Lahan Pertanian dan Non Pertanian Di Kec Cikajang, Tahun 2016**

*Table. 2. 04 : Area of Rural Areas / Ex specified According to the Agricultural and Non-Agricultural Land In Cikajang district,2016*

| Desa/Kel           | Hutan    | Pertanian | Non<br>Pertanian | Jumlah    |
|--------------------|----------|-----------|------------------|-----------|
| (1)                | (2)      | (3)       | (4)              | (5)       |
| 001. Cipangramatan | 1.040,00 | 686,80    | 29,20            | 1.756,00  |
| 002. Mekarjaya     | 216,45   | 400,40    | 174,10           | 790,95    |
| 003. Girijaya      | -        | 259,84    | 21,26            | 281,10    |
| 004. Giriawas      | 992,00   | 487,44    | 15,56            | 1.495,01  |
| 005. Cibodas       | -        | 180,80    | 26,00            | 206,80    |
| 006. Cikajang      | -        | 47,40     | 52,70            | 100,10    |
| 007. Padasuka      | -        | 50,23     | 60,00            | 110,23    |
| 008. Mekarsari     | -        | 167,00    | 43,00            | 210,00    |
| 009. Simpang       | 1.266,00 | 671,00    | 99,00            | 2.036,00  |
| 010. Cikandang     | 674,00   | 503,81    | 21,40            | 1.199,21  |
| 011. Margamulya    | 492,16   | 1.287,50  | 30,30            | 1.809,96  |
| 012. Karamatwangi  | 1.050,00 | 1.094,00  | 22,8             | 2.144,00  |
| Jumlah             | 5.730,61 | 5.836,22  | 572,52           | 12.139,35 |

*Sumber :Desa*

**BAB 3**  
**KEPENDUDUKAN DAN**  
**KETENAGAKERJAAN**  
**POPULATION AND**  
**EMPLOYMENT**

<https://garutkuib.go.id>

*Population*

<https://garutkab.bps.go.id>

**Tabel. 3.01 : Jumlah Penduduk Menurut Jenis Kelamin di Kecamatan Cikajang, Tahun 2016**

*Table. 3.01 : Total Population by Gender in District Cikajang, 2016*

| Desa/ Kel          | Laki-laki     | Perempuan     | Jumlah        |
|--------------------|---------------|---------------|---------------|
| (1)                | (2)           | (3)           | (4)           |
| 001. Cipangramatan | 3.048         | 2.943         | 5.991         |
| 002. Mekarjaya     | 3.564         | 3.641         | 7.205         |
| 003. Girijaya      | 4.226         | 4.09          | 8.316         |
| 004. Giriawas      | 3.558         | 3.691         | 7.249         |
| 005. Cibodas       | 5.184         | 5.137         | 10.321        |
| 006. Cikajang      | 2.397         | 2.394         | 4.791         |
| 007. Padasuka      | 3.497         | 3.39          | 6.887         |
| 008. Mekarsari     | 3.282         | 3.142         | 6.424         |
| 009. Simpang       | 5.199         | 5.037         | 10.236        |
| 010. Cikandang     | 3.299         | 3.292         | 6.591         |
| 011. Margamulya    | 3.472         | 3.441         | 6.913         |
| 012. Karamatwangi  | 2.665         | 2.593         | 5.258         |
| <b>Jumlah</b>      | <b>43.391</b> | <b>42.791</b> | <b>86.182</b> |

Sumber :BPS

**Tabel. 3.02 : Jumlah Penduduk Menurut Kelompok Umur Dan Jenis Kelamin Di Kec Cikajang, Tahun 2016**

*Tabel. 3.02 : Population by Age Group and Gender In Cikajang District, 2016*

| Kelompok Umur | Laki-laki | Perempuan | Jumlah |
|---------------|-----------|-----------|--------|
| (1)           | (2)       | (3)       | (4)    |
| 00 – 04       | 4.636     | 4.463     | 9.099  |
| 05 – 09       | 4.583     | 4.432     | 9.015  |
| 10 – 14       | 4.513     | 4.425     | 8.938  |
| 15 – 19       | 3.978     | 4.076     | 8.054  |
| 20 – 24       | 3.639     | 3.643     | 7.282  |
| 25 – 29       | 3.441     | 3.287     | 6.728  |
| 30 – 34       | 3.334     | 3.116     | 6.450  |
| 35 – 39       | 3.064     | 2.985     | 6.049  |
| 40 – 44       | 2.672     | 2.746     | 5.418  |
| 45 – 49       | 2.571     | 2.485     | 5.056  |
| 50 – 54       | 2.062     | 2.058     | 4.120  |
| 55 – 59       | 1.727     | 1.587     | 3.314  |
| 60 – 64       | 1.107     | 1.135     | 2.242  |
| 65 – 69       | 817       | 869       | 1.686  |
| 70 – 74       | 592       | 663       | 1.255  |
| 75 +          | 655       | 821       | 1.476  |
| halmuJ        | 43.391    | 42.791    | 86.182 |

Sumber :BPS

**Tabel. 3.03 : Jumlah Penduduk Menurut Kelompok Usia Di Kecamatan Cikajang, Tahun 2016**

*Tabel. 3.03 : Total Population by Age Group In Sub Cikajang, 2016*

| Desa/ Kel          | 0-14          | 15 - 64       | 65 +         |
|--------------------|---------------|---------------|--------------|
| (1)                | (2)           | (3)           | (4)          |
| 001. Cipangramatan | 1.959         | 3.837         | 309          |
| 002. Mekarjaya     | 2.288         | 4.427         | 357          |
| 003. Girijaya      | 2.716         | 5.196         | 421          |
| 004. Giriawas      | 2.299         | 4.447         | 358          |
| 005. Cibodas       | 3.344         | 6.322         | 512          |
| 006. Cikajang      | 1.562         | 3.123         | 248          |
| 007. Padasuka      | 2.247         | 4.334         | 350          |
| 008. Mekarsari     | 2.119         | 4.124         | 332          |
| 009. Simpang       | 3.338         | 6.310         | 511          |
| 010. Cikandang     | 2.119         | 4.124         | 332          |
| 011. Margamulya    | 2.245         | 4.350         | 353          |
| 012. Karamatwangi  | 1.675         | 3.327         | 267          |
| <b>halmu</b>       | <b>27.911</b> | <b>53.921</b> | <b>4.350</b> |

Sumber : BPS

**Tabel. 3.04 : Kepadatan Penduduk Menurut Desa/ Kel Di Kec Cikajang, Tahun 2016**

*Tabel. 3.04 : According to the Population Density Rural / Ex In Cikajang District, 2016*

| Desa/ Kel          | Luas Daerah (Km2) | Jumlah Penduduk | Kepadatan per (Km2) |
|--------------------|-------------------|-----------------|---------------------|
| (1)                | (2)               | (3)             | (4)                 |
| 001. Cipangramatan | 1756,00           | 5.991           | 3.41                |
| 002. Mekarjaya     | 790,95            | 7.205           | 9.11                |
| 003. Girijaya      | 281,10            | 8.316           | 29.58               |
| 004. Giriawas      | 1495,01           | 7.249           | 4.85                |
| 005. Cibodas       | 206,80            | 10.321          | 49.91               |
| 006. Cikajang      | 100,10            | 4.791           | 47.86               |
| 007. Padasuka      | 110,23            | 6.887           | 62.48               |
| 008. Mekarsari     | 210,00            | 6.424           | 30.59               |
| 009. Simpang       | 2036,00           | 10.236          | 5.03                |
| 010. Cikandang     | 1199,21           | 6.591           | 5.50                |
| 011. Margamulya    | 1809,96           | 6.913           | 3.82                |
| 012. Karamatwangi  | 2144,00           | 5.258           | 2.45                |
| halmuJ             | 12139,35          | 86.182          | 7.10                |

Sumber : BPS



**Jumlah Penduduk, Rmtg dan Rata-rata Anggota Rmtg Menurut Desa/ Kel Di Kecamatan Cikajang, Tahun 2016**

*Tabel. 3.05 :*

*Tabel. 3.05 : Population, and average Rmtg Members Rmtg According to the Village / Ex In Sub Cikajang, 2016*

| Desa/ Kel          | Jumlah Penduduk | Jumlah Rumahtangga | Rata-rata Anggota Rumahtangga |
|--------------------|-----------------|--------------------|-------------------------------|
| (1)                | (2)             | (3)                | (4)                           |
| 001. Cipangramatan | 5.991           | 1.644              | 3.64                          |
| 002. Mekarjaya     | 7.205           | 1.679              | 4.29                          |
| 003. Girijaya      | 8.316           | 1.753              | 4.74                          |
| 004. Giriawas      | 7.249           | 1.802              | 4.02                          |
| 005. Cibodas       | 10.321          | 2.650              | 3.89                          |
| 006. Cikajang      | 4.791           | 1.183              | 4.05                          |
| 007. Padasuka      | 6.887           | 1.716              | 4.01                          |
| 008. Mekarsari     | 6.424           | 1.476              | 4.35                          |
| 009. Simpang       | 10.236          | 2.597              | 3.94                          |
| 010. Cikandang     | 6.591           | 1.801              | 3.66                          |
| 011. Margamulya    | 6.913           | 1.897              | 3.64                          |
| 012. Karamatwangi  | 5.258           | 1.489              | 3.53                          |
| halmuJ             | 86.182          | 21.687             | 3,97                          |

*Sumber : BPS*

**Tabel. 3.06 : Jumlah Penduduk menurut pekerjaan utama Di Kecamatan Cikajang, Tahun 2016**

*Tabel. 3.06 : Population by main occupation Cikajang Subdistrict, 2016*

| Pekerjaan                 | Banyaknya | Persentase |
|---------------------------|-----------|------------|
| (1)                       | (2)       | (3)        |
| Tanaman pangan & palawija | 2317      | 5,44%      |
| Holtikultura              | 12.463    | 29,24%     |
| Perkebunan                | 3154      | 7,40%      |
| Perikanan                 | 1.231     | 2,89%      |
| Perternakan               | 3.387     | 7,95%      |
| Kehutanan                 | 4.084     | 9,58%      |
| Pertambangan& Penggalian  | 431       | 1,01%      |
| Industri                  | 1.678     | 3,94%      |
| Listrik dan gas           | 41        | 0,10%      |
| Konstruksi                | 902       | 2,12%      |
| halmuJ                    | 29688     |            |

Sumber : BPS

**Tabel. 3.05 : Jumlah Penduduk menurut pekerjaan utama Di Kecamatan Cikajang, Tahun 2016**

*Tabel. 3.05 : Population by main occupation Cikajang Subdistrict, 2016*

| Pekerjaan                | Banyaknya | Persentase |
|--------------------------|-----------|------------|
| (1)                      | (2)       | (3)        |
| Perdagangan              | 6.842     | 16,05%     |
| Hotel dan rumah makan    | 789       | 1,85%      |
| Transportasi             | 1792      | 4,20%      |
| Informasi dan komunikasi | 113       | 0,27%      |
| Keuangan Asuransi        | 147       | 0,34%      |
| Jasa Pendidikan          | 781       | 1,83%      |
| Jasa kesehatan           | 147       | 0,34%      |
| Jasa Kemasyarakatan      | 2157      | 5,06%      |
| Lainnya                  | 171       | 0,40%      |
| halmuJ                   | 1.2939    |            |

Sumber : BPS

*Social*

<https://garutkab.bps.go.id>

<https://garutkab.bps.go.id>

# ***BAB 4***

# ***SOSIAL***

# ***SOCIAL***

<https://garutkab.bps.go.id>

**Jumlah Sekolah, Murid dan Guru Taman Kanak-kanak (TK) Menurut Desa/ Kel Di Kecamatan Cikajang, Tahun 2016**

*Tabel. 4.1.01 :*

*Number of Schools, Students and Teachers Kindergarten (TK) According to the Village / Ex In Sub Cikajang, 2016*

*Tabel. 4.1.01 :*

| Desa/ Kel          | Sekolah   | Murid      | Guru      |
|--------------------|-----------|------------|-----------|
| (1)                | (2)       | (3)        | (4)       |
| 001. Cipangramatan | 1         | 29         | 3         |
| 002. Mekarjaya     | 1         | 24         | 3         |
| 003. Girijaya      | 2         | 51         | 9         |
| 004. Giriawas      | 1         | 64         | 4         |
| 005. Cibodas       | 0         | 0          | 0         |
| 006. Cikajang      | 3         | 88         | 14        |
| 007. Padasuka      | 0         | 0          | 0         |
| 008. Mekarsari     | 2         | 63         | 8         |
| 009. Simpang       | 0         | 0          | 0         |
| 010. Cikandang     | 2         | 51         | 7         |
| 011. Margamulya    | 2         | 91         | 5         |
| 012. Karamatwangi  | -         | -          | -         |
| <b>halmuj</b>      | <b>14</b> | <b>461</b> | <b>53</b> |

*Sumber :UPTD Dikdas*

**Tabel. 4.1.02 : Jumlah Sekolah, Murid dan Guru Sekolah Dasar (SD) Dilingkungan Dinas Pendidikan Menurut Desa/ Kel Di Kecamatan Cikajang, Tahun 2016**

*Number of Schools, Students and Teachers Elementary School (SD) Department of Education According to the the village's environment / Ex In Sub Cikajang, 2016*

| Desa/ Kel          | Sekolah | Murid | Guru |
|--------------------|---------|-------|------|
| (1)                | (2)     | (3)   | (4)  |
| 001. Cipangramatan | 3       | 683   | 26   |
| 002. Mekarjaya     | 4       | 1191  | 41   |
| 003. Girijaya      | 2       | 732   | 24   |
| 004. Giriawas      | 5       | 1176  | 47   |
| 005. Cibodas       | 4       | 1030  | 42   |
| 006. Cikajang      | 4       | 715   | 37   |
| 007. Padasuka      | 3       | 748   | 30   |
| 008. Mekarsari     | 3       | 571   | 28   |
| 009. Simpang       | 4       | 1136  | 41   |
| 010. Cikandang     | 2       | 591   | 23   |
| 011. Margamulya    | 3       | 703   | 24   |
| 012. Karamatwangi  | 2       | 523   | 15   |
| halmuJ             | 39      | 9799  | 378  |

Sumber :UPTD Dikdas



**Jumlah Sekolah Dasar (SD) perkelas**  
**Tabel. 4.1.03 : Dilingkungan Dinas Pendidikan Menurut Desa/**  
**Kel Di Kecamatan Cikajang, Tahun 2016**

*Number of Students and Elementary School (SD)*  
**Tabel. 4.1.03 : Department of Education According to the the**  
*village's environment / Ex In Sub Cikajang, 2016*

| Desa/ Kel          | I    | II   | III  | IV   | V    | VI   |
|--------------------|------|------|------|------|------|------|
| (1)                | (2)  | (3)  | (4)  | (5)  | (6)  | (7)  |
| 001. Cipangramatan | 121  | 109  | 98   | 113  | 123  | 119  |
| 002. Mekarjaya     | 218  | 176  | 201  | 173  | 221  | 202  |
| 003. Girijaya      | 132  | 130  | 121  | 121  | 118  | 110  |
| 004. Giriawas      | 240  | 179  | 196  | 180  | 194  | 187  |
| 005. Cibodas       | 165  | 168  | 154  | 169  | 202  | 172  |
| 006. Cikajang      | 100  | 107  | 127  | 109  | 126  | 146  |
| 007. Padasuka      | 141  | 139  | 114  | 116  | 118  | 120  |
| 008. Mekarsari     | 104  | 87   | 85   | 99   | 93   | 103  |
| 009. Simpang       | 186  | 201  | 199  | 197  | 184  | 169  |
| 010. Cikandang     | 90   | 101  | 89   | 93   | 103  | 115  |
| 011. Margamulya    | 133  | 103  | 99   | 119  | 122  | 127  |
| 012. Karamatwangi  | 101  | 86   | 76   | 83   | 75   | 102  |
| halmuj             | 1731 | 1586 | 1559 | 1572 | 1679 | 1672 |

Sumber :UPTD Dikdas

**Tabel. 4.1.04 :** Jumlah Ruang kelas yang dimiliki menurut kondisi bangunan Sekolah Dasar (SD) Dilingkungan Dinas Pendidikan Menurut Desa/ Kel Di Kecamatan Cikajang, Tahun 2016

**Tabel. 4.1.04 :** Number of classrooms owned by the condition of elementary school buildings (SD) Department of Education According to the the village's environment / Ex In Sub Cikajang, 2016

| Desa/ Kel          | Baik | Rusak Ringan | Rusak Berat |
|--------------------|------|--------------|-------------|
| (1)                | (2)  | (3)          | (4)         |
| 001. Cipangramatan | 7    | 9            | 2           |
| 002. Mekarjaya     | 19   | 5            | 5           |
| 003. Girijaya      | 4    | 5            | 7           |
| 004. Giriawas      | 12   | 11           | 10          |
| 005. Cibodas       | 12   | 3            | 1           |
| 006. Cikajang      | 17   | 4            | 4           |
| 007. Padasuka      | 9    | 1            | 6           |
| 008. Mekarsari     | 3    | 7            | 5           |
| 009. Simpang       | 20   | 5            | 3           |
| 010. Cikandang     | 6    | 3            | 7           |
| 011. Margamulya    | 10   | 4            | 4           |
| 012. Karamatwangi  | 8    | 2            | 0           |
| halmuJ             | 127  | 59           | 54          |

Sumber :UPTD Dikdas

**Tabel. 4.1.05 :** Jumlah Guru menurut status pegawai Sekolah Dasar (SD) Dilingkungan Dinas Pendidikan Menurut Desa/ Kel Di Kecamatan Cikajang, Tahun 2016

**Tabel. 4.1.05 :** *Number of teacher Elementary School (SD) Department of Education According to the the village's environment / Ex In Sub Cikajang, 2016*

| Desa/ Kel          | PNS | TKK | SKW |
|--------------------|-----|-----|-----|
| (1)                | (2) | (3) | (4) |
| 001. Cipangramatan | 6   | -   | 20  |
| 002. Mekarjaya     | 23  | -   | 18  |
| 003. Girijaya      | 10  | -   | 14  |
| 004. Giriawas      | 27  | -   | 20  |
| 005. Cibodas       | 21  | -   | 21  |
| 006. Cikajang      | 17  | -   | 20  |
| 007. Padasuka      | 16  | -   | 14  |
| 008. Mekarsari     | 13  | -   | 15  |
| 009. Simpang       | 22  | -   | 19  |
| 010. Cikandang     | 11  | -   | 12  |
| 011. Margamulya    | 11  | -   | 13  |
| 012. Karamatwangi  | 3   | -   | 12  |
| halmuJ             | 180 | -   | 198 |

Sumber :UPTD Dikdas

**Tabel. 4.1.06 :** **Jumlah Guru Sekolah Dasar (SD) menurut Status Pendidikan Dilingkungan Dinas Pendidikan Menurut Desa/ Kel Di Kecamatan Cikajang, Tahun 2016**

**Tabel. 4.1.06 :** *Number of Teachers and Elementary School (SD) Department of Education According to the the village's environment / Ex In Sub Cikajang, 2016*

| Desa/ Kel          | Linier | Mapel | PAI |
|--------------------|--------|-------|-----|
| (1)                | (2)    | (3)   | (4) |
| 001. Cipangramatan | 9      | 12    | 5   |
| 002. Mekarjaya     | 14     | 21    | 6   |
| 003. Girijaya      | 13     | 8     | 3   |
| 004. Giriawas      | 24     | 15    | 8   |
| 005. Cibodas       | 27     | 12    | 3   |
| 006. Cikajang      | 18     | 13    | 6   |
| 007. Padasuka      | 13     | 14    | 3   |
| 008. Mekarsari     | 12     | 13    | 3   |
| 009. Simpang       | 21     | 16    | 4   |
| 010. Cikandang     | 8      | 11    | 4   |
| 011. Margamulya    | 13     | 10    | 1   |
| 012. Karamatwangi  | 8      | 5     | 2   |
| halmuJ             | 180    | 150   | 48  |

Sumber :UPTD Dikdas

**Jumlah Sekolah, Murid dan Guru Madrasah Ibtidaiyah (MI) dan SD swasta Menurut Desa/ Kel Di Kecamatan Cikajang, Tahun 2016**

*Tabel. 4.1.07 :*

*Number of Schools, Students and Teachers Elementary School (MI) and private elementary According to the Village / Ex In Sub Cikajang, 2016*

*Tabel. 4.1.07 :*

| Desa/ Kel          | Sekolah | Murid | Guru |
|--------------------|---------|-------|------|
| (1)                | (2)     | (3)   | (4)  |
| 001. Cipangramatan | -       | -     | -    |
| 002. Mekarjaya     | 1       | 181   | 12   |
| 003. Girijaya      | -       | -     | -    |
| 004. Giriawas      | -       | -     | -    |
| 005. Cibodas       | 1       | 98    | 6    |
| 006. Cikajang      | -       | -     | -    |
| 007. Padasuka      | -       | -     | -    |
| 008. Mekarsari     | 1       | 349   | 15   |
| 009. Simpang       | 1       | 196   | 12   |
| 010. Cikandang     | -       | -     | -    |
| 011. Margamulya    | 1       | 252   | 12   |
| 012. Karamatwangi  | 1       | 273   | 14   |
| halmuJ             | 6       | 1349  | 71   |

Sumber :UPTD Dikdas

**Jumlah Sekolah, Murid dan Guru Sekolah  
Menengah Tingkat Pertama (SMP)**

**Tabel. 4.1. 08 : Dilingkungan Dinas Pendidikan Di Kecamatan  
Cikajang, Tahun 2016**

*Number of Schools, Students and Teachers  
Junior High School (SMP) Department of  
Education's environment  
In Sub Cikajang, 2016*

| Desa/ Kel          | Sekolah   | Murid       | Guru       |
|--------------------|-----------|-------------|------------|
| (1)                | (2)       | (3)         | (4)        |
| 001. Cipangramatan | 2         | 345         | 22         |
| 002. Mekarjaya     | -         | -           | -          |
| 003. Girijaya      | -         | -           | -          |
| 004. Giriawas      | 2         | 180         | 26         |
| 005. Cibodas       | 2         | 1004        | 42         |
| 006. Cikajang      | 1         | 1066        | 44         |
| 007. Padasuka      | -         | -           | -          |
| 008. Mekarsari     | 2         | 96          | 17         |
| 009. Simpang       | -         | -           | -          |
| 010. Cikandang     | -         | -           | -          |
| 011. Margamulya    | 1         | 404         | 25         |
| 012. Karamatwangi  | -         | -           | -          |
| <b>halmuj</b>      | <b>10</b> | <b>2750</b> | <b>154</b> |

Sumber :Sekolah

**Jumlah Sekolah, Murid dan Guru Madrasah  
Tsanawiyah (MTs) Menurut Desa/ Kel  
Kecamatan Cikajang, Tahun 2016**

*Number of Schools, Students and Teachers MTs  
(MTs) According to the village / subdistrict Ex  
Cikajang, 2016*

| Desa/ Kel          | Sekolah | Murid | Guru |
|--------------------|---------|-------|------|
| (1)                | (2)     | (3)   | (4)  |
| 001. Cipangramatan | 2       | 439   | 46   |
| 002. Mekarjaya     | 1       | 153   | 28   |
| 003. Girijaya      | 1       | 38    | 12   |
| 004. Giriawas      | 1       | 29    | 12   |
| 005. Cibodas       | 1       | 381   | 27   |
| 006. Cikajang      | 1       | 321   | 26   |
| 007. Padasuka      | -       | -     | -    |
| 008. Mekarsari     | -       | -     | -    |
| 009. Simpang       | 1       | 187   | 23   |
| 010. Cikandang     | -       | -     | -    |
| 011. Margamulya    | 1       | 402   | 26   |
| 012. Karamatwangi  | 1       | 97    | 15   |
| halmuj             | 10      | 1995  | 214  |

Sumber :Sekolah

**Jumlah Sekolah, Murid Dan Guru  
Sekolah Menengah Umum (SMU)  
Menurut Desa/ Kel Di Kecamatan  
Cikajang Tahun 2016**

Tabel. 4.1.10 :

Tabel. 4.1.10 : *Number of Schools, Students and Teachers High School (SMU) environment Village / Ex In Sub Cikajang 2016*

| Desa/ Kel          | Sekolah | Murid | Guru |
|--------------------|---------|-------|------|
| (1)                | (2)     | (3)   | (4)  |
| 001. Cipangramatan | -       | -     | -    |
| 002. Mekarjaya     | -       | -     | -    |
| 003. Girijaya      | -       | -     | -    |
| 004. Giriawas      | 1       | 723   | 43   |
| 005. Cibodas       | -       | -     | -    |
| 006. Cikajang      | -       | -     | -    |
| 007. Padasuka      | -       | -     | -    |
| 008. Mekarsari     | -       | -     | -    |
| 009. Simpang       | -       | -     | -    |
| 010. Cikandang     | -       | -     | -    |
| 011. Margamulya    | -       | -     | -    |
| 012. Karamatwangi  | -       | -     | -    |
| halmuj             | 1       | 714   | 43   |

Sumber :Sekolah



**Jumlah Sekolah, Murid Dan Guru Madrasah Aliyah (MA) Menurut Desa/ Kel Kecamatan Cikajang, Tahun 2016**

*Tabel. 4.1. 11 :*

*Number of Schools, Students and Teachers*

*Tabel. 4.1. 11 : Madrasah Aliyah (MA) According to the village / subdistrict Ex Cikajang, 2016*

| Desa/ Kel          | Sekolah | Murid | Guru |
|--------------------|---------|-------|------|
| (1)                | (2)     | (3)   | (4)  |
| 001. Cipangramatan | 1       | 94    | 21   |
| 002. Mekarjaya     | 1       | 85    | 22   |
| 003. Girijaya      | -       | -     | -    |
| 004. Giriawas      | -       | -     | -    |
| 005. Cibodas       | 1       | 225   | 21   |
| 006. Cikajang      | -       | -     | -    |
| 007. Padasuka      | -       | -     | -    |
| 008. Mekarsari     | -       | -     | -    |
| 009. Simpang       | 1       | 71    | 17   |
| 010. Cikandang     | -       | -     | -    |
| 011. Margamulya    | -       | -     | -    |
| 012. Karamatwangi  | -       | -     | -    |
| halmuj             | 4       | 475   | 81   |

*Sumber :Sekolah*

**Jumlah Sekolah, Murid Dan Guru Sekolah Menengah Kejuruan (SMK) Menurut Desa/ Kel Kecamatan Cikajang, Tahun 2016**

*Number of Schools, Students and Teachers Vocational School (SMK) environment village / subdistrict Ex Cikajang, 2016*

| Desa/ Kel          | Sekolah  | Murid      | Guru      |
|--------------------|----------|------------|-----------|
| (1)                | (2)      | (3)        | (4)       |
| 001. Cipangramatan | -        | -          | -         |
| 002. Mekarjaya     | -        | -          | -         |
| 003. Girijaya      | -        | -          | -         |
| 004. Giriawas      | -        | -          | -         |
| 005. Cibodas       | 2        | 353        | 42        |
| 006. Cikajang      | -        | -          | -         |
| 007. Padasuka      | -        | -          | -         |
| 008. Mekarsari     | 1        | 158        | 23        |
| 009. Simpang       | -        | -          | -         |
| 010. Cikandang     | -        | -          | -         |
| 011. Margamulya    | -        | -          | -         |
| 012. Karamatwangi  | -        | -          | -         |
| <b>halmuJ</b>      | <b>3</b> | <b>511</b> | <b>65</b> |

Sumber :Sekolah

**Jumlah Pondok Pesantren, Pengasuh dan Santri Menurut Desa/ Kel Kecamatan Cikajang, Tahun 2016**

*Tabel. 4.1.13 :*

*Tabel. 4.1.13 :* *The number of boarding school, Caregiver and Pupils According to the village / subdistrict Ex Cikajang, 2016*

| Desa/ Kel          | Pondok Pesantr en | Pengasuh | Santri    |           |        |
|--------------------|-------------------|----------|-----------|-----------|--------|
|                    |                   |          | Laki-laki | Perempuan | Jumlah |
| (1)                | (2)               | (3)      | (4)       | (5)       | (6)    |
| 001. Cipangramatan | 2                 | 19       | 146       | 103       | 249    |
| 002. Mekarjaya     | 3                 | 9        | 43        | 38        | 81     |
| 003. Girijaya      | 1                 | 5        | 14        | 16        | 30     |
| 004. Giriawas      | 6                 | 8        | 146       | 108       | 254    |
| 005. Cibodas       | 5                 | 8        | 187       | 110       | 297    |
| 006. Cikajang      | 2                 | 4        | 57        | 54        | 111    |
| 007. Padasuka      | 0                 | 0        | 0         | 0         | 0      |
| 008. Mekarsari     | 1                 | 3        | 45        | 38        | 83     |
| 009. Simpang       | 7                 | 10       | 155       | 133       | 288    |
| 010. Cikandang     | 0                 | 0        | 0         | 0         | 0      |
| 011. Margamulya    | 1                 | 3        | 81        | 125       | 206    |
| 012. Karamatwangi  | 0                 | 0        | 0         | 0         | 0      |
| halmuJ             | 28                | 69       | 874       | 725       | 1599   |

*Sumber :Desa*

**Tabel. 4.2.01 : Jumlah Sarana Fasilitas Kesehatan Menurut Desa/ Kel. Di Kecamatan Cikajang, Tahun 2016**

*Tabel. 4.2.01 : Total Facilities Health Facilities According to the village / Ex. In Sub Cikajang, 2016*

| Desa/ Kel          | Rumah Sakit/<br>RS<br>Bersalin | Puskes-<br>mas | Pustu | Poliklinik/<br>Balai<br>Pengobat<br>an | Poskes-<br>des | Pos<br>Yandu |
|--------------------|--------------------------------|----------------|-------|--|----------------|--------------|
| (1)                | (2)                            | (3)            | (4)   | (5)                                    | (6)            | (7)          |
| 001. Cipangramatan | -                              | -              | 1     | -                                      | -              | 7            |
| 002. Mekarjaya     | -                              | -              | -     | -                                      | -              | 7            |
| 003. Girijaya      | -                              | -              | -     | -                                      | -              | 10           |
| 004. Giriawas      | -                              | -              | -     | -                                      | 1              | 11           |
| 005. Cibodas       | -                              | -              | -     | 1                                      | -              | 10           |
| 006. Cikajang      | -                              | 1              | -     | -                                      | -              | 7            |
| 007. Padasuka      | -                              | -              | -     | -                                      | -              | 7            |
| 008. Mekarsari     | -                              | -              | -     | 1                                      | 1              | 7            |
| 009. Simpang       | -                              | -              | -     | -                                      | 1              | 11           |
| 010. Cikandang     | -                              | -              | 1     | -                                      | -              | 10           |
| 011. Margamulya    | -                              | -              | -     | -                                      | 1              | 9            |
| 012. Karamatwangi  | -                              | -              | -     | -                                      | -              | 6            |
| <b>halmuJ</b>      | -                              | 1              | 2     | 2                                      | 4              | 102          |

Sumber :Puskesmas

**Tabel. 4.2.01 : Lanjutan***Table. 4.2.01: Advanced*

| Desa/ Kel          | Tempat<br>Praktek<br>Dokter | Tempat Praktek<br>Bidan | Apotik | Toko<br>Khusus<br>Obat/Ja<br>mu |
|--------------------|-----------------------------|-------------------------|--------|---------------------------------|
| (1)                | (8)                         | (9)                     | (10)   | (11)                            |
| 001. Cipangramatan | -                           | 1                       | -      | -                               |
| 002. Mekarjaya     | -                           | 1                       | -      | -                               |
| 003. Girijaya      | -                           | 2                       | -      | -                               |
| 004. Giriawas      | -                           | 1                       | -      | -                               |
| 005. Cibodas       | 1                           | 3                       | 2      | 1                               |
| 006. Cikajang      | 1                           | 2                       | 2      | 3                               |
| 007. Padasuka      | -                           | 1                       | 1      | 1                               |
| 008. Mekarsari     | 4                           | 2                       | 1      | -                               |
| 009. Simpang       | 1                           | 3                       | -      | -                               |
| 010. Cikandang     | -                           | 1                       | -      | -                               |
| 011. Margamulya    | -                           | 1                       | -      | -                               |
| 012. Karamatwangi  | -                           | 1                       | -      | -                               |
| halmuj             | 7                           | 19                      | 6      | 5                               |

Sumber : Puskesmas

**Tabel. 4.2.02 : Jumlah Tenaga Kesehatan Menurut Desa/ Kel Di Kecamatan Cikajang, Tahun 2016**

*Tabel. 4.2.02 : Number of Health Workers According to the village / Ex In Sub Cikajang, 2016*

| Desa/ Kel          | Dokter | Perawat | Mantri Kesehatan | Bidan | Dukun Beranak |
|--------------------|--------|---------|------------------|-------|---------------|
| (1)                | (2)    | (3)     | (4)              | (5)   | (6)           |
| 001. Cipangramatan | -      | -       | 1                | 1     | 5             |
| 002. Mekarjaya     | -      | -       | 1                | 1     | 0             |
| 003. Girijaya      | -      | -       | 3                | 2     | 0             |
| 004. Giriawas      | -      | -       | 1                | 1     | 3             |
| 005. Cibodas       | 1      | -       | 5                | 3     | 5             |
| 006. Cikajang      | 2      | -       | 3                | 2     | 0             |
| 007. Padasuka      | -      | -       | 6                | 1     | 4             |
| 008. Mekarsari     | 5      | -       | 1                | 2     | 3             |
| 009. Simpang       | 1      | -       | 2                | 3     | 2             |
| 010. Cikandang     | -      | -       | 3                | 1     | 3             |
| 011. Margamulya    | -      | -       | 3                | 1     | 1             |
| 012. Karamatwangi  | -      | -       | -                | 1     | 5             |
| halmuJ             | 9      |         | 29               | 19    | 31            |

Sumber :Puskesmas

**Jumlah Peserta Akseptor KB menurut Jenis Alat Kontrasepsi di Kecamatan Cikajang, Tahun 2015**

*Tabel. 4.2.03 :*

*The number of family planning acceptors Participants by Type of Contraception in District Cikajang, 2015*

| Desa/ Kel          | IUD  | MOP | MOW | IMPLANT |
|--------------------|------|-----|-----|---------|
| (1)                | (2)  | (3) | (4) | (5)     |
| 001. Cipangramatan | 67   | 8   | 7   | 31      |
| 002. Mekarjaya     | 159  | 3   | 16  | 47      |
| 003. Girijaya      | 197  | 5   | 17  | 40      |
| 004. Giriawas      | 281  | 17  | 55  | 27      |
| 005. Cibodas       | 271  | 13  | 26  | 99      |
| 006. Cikajang      | 173  | 2   | 27  | 30      |
| 007. Padasuka      | 192  | 3   | 30  | 32      |
| 008. Mekarsari     | 104  | 3   | 20  | 37      |
| 009. Simpang       | 145  | 5   | 13  | 56      |
| 010. Cikandang     | 167  | 2   | 14  | 99      |
| 011. Margamulya    | 103  | 0   | 20  | 72      |
| 012. Karamatwangi  | 53   | 0   | 6   | 25      |
| halmuj             | 1912 | 61  | 251 | 595     |

*Sumber :UPTD-KB*

Tabel. 4.2.03 : Lanjutan

Tabel. 4.2.03 : Advanced

| Desa/ Kel          | SUNTIK | PIL  | KONDOM | Jumlah |
|--------------------|--------|------|--------|--------|
| (1)                | (6)    | (7)  | (8)    | (9)    |
| 001. Cipangramatan | 524    | 69   | 5      | 598    |
| 002. Mekarjaya     | 669    | 29   | 5      | 703    |
| 003. Girijaya      | 638    | 58   | 0      | 696    |
| 004. Giriawas      | 414    | 151  | 7      | 572    |
| 005. Cibodas       | 579    | 170  | 5      | 754    |
| 006. Cikajang      | 366    | 163  | 7      | 536    |
| 007. Padasuka      | 647    | 130  | 7      | 784    |
| 008. Mekarsari     | 390    | 183  | 8      | 581    |
| 009. Simpang       | 472    | 430  | 9      | 911    |
| 010. Cikandang     | 528    | 206  | 12     | 746    |
| 011. Margamulya    | 804    | 167  | 2      | 973    |
| 012. Karamatwangi  | 422    | 51   | 0      | 473    |
| halmuJ             | 6453   | 1807 | 67     | 8327   |

Sumber :UPTD-KB



**Tabel. 4.2.04 : Jumlah Pasangan Usia Subur (PUS) menurut Kelompok Umur di Kecamatan Cikajang, Tahun 2015**

*Tabel. 4.2.04 : Number of Eligible Spouse (EFA) by Age Group in District Cikajang, 2015*

| Desa/ Kel          | < 20 Thn    | 20-29 Thn   | > 30 Thn    | Jumlah       |
|--------------------|-------------|-------------|-------------|--------------|
| (1)                | (2)         | (3)         | (4)         | (5)          |
| 001. Cipangramatan | 64          | 347         | 791         | 1202         |
| 002. Mekarjaya     | 167         | 581         | 572         | 1320         |
| 003. Girijaya      | 77          | 536         | 1019        | 1632         |
| 004. Giriawas      | 232         | 499         | 623         | 1354         |
| 005. Cibodas       | 61          | 265         | 1346        | 1672         |
| 006. Cikajang      | 30          | 239         | 460         | 729          |
| 007. Padasuka      | 37          | 332         | 655         | 1024         |
| 008. Mekarsari     | 37          | 173         | 953         | 1163         |
| 009. Simpang       | 90          | 776         | 870         | 1736         |
| 010. Cikandang     | 363         | 529         | 468         | 1360         |
| 011. Margamulya    | 343         | 506         | 457         | 1306         |
| 012. Karamatwangi  | 67          | 419         | 521         | 1007         |
| <b>ImuJha</b>      | <b>1568</b> | <b>5202</b> | <b>8735</b> | <b>15505</b> |

Sumber :UPTD-KB

**Tabel. 4.2.05 : Jumlah Penduduk menurut Pentahapan Keluarga Sejahtera di Kecamatan Cikajang, Tahun 2015**

*Tabel. 4.2.05 : Population by Phasing Family Welfare in District Cikajang, 2015*

| Desa/ Kel          | Pra KS | KS 1 | KS 2 | KS 3 | KS 4 |
|--------------------|--------|------|------|------|------|
| (1)                | (2)    | (3)  | (4)  | (5)  | (6)  |
| 001. Cipangramatan | 675    | 544  | 104  | 48   | 0    |
| 002. Mekarjaya     | 1065   | 763  | 60   | 134  | 5    |
| 003. Girijaya      | 1844   | 267  | 15   | 291  | 4    |
| 004. Giriawas      | 1054   | 389  | 33   | 710  | 5    |
| 005. Cibodas       | 1007   | 992  | 135  | 12   | 63   |
| 006. Cikajang      | 526    | 524  | 148  | 137  | 27   |
| 007. Padasuka      | 663    | 615  | 310  | 112  | 3    |
| 008. Mekarsari     | 1030   | 135  | 1257 | 439  | 3    |
| 009. Simpang       | 1787   | 540  | 6    | 126  | 2    |
| 010. Cikandang     | 1066   | 283  | 43   | 756  | 12   |
| 011. Margamulya    | 1024   | 382  | 180  | 217  | 2    |
| 012. Karamatwangi  | 1155   | 351  | 14   | 55   | 0    |
| halmuJ             | 12896  | 5785 | 2305 | 3037 | 216  |

Sumber :UPTD-KB

**Tabel. 4. 3.01 : Jumlah Pemeluk Agama menurut Agama yang Dianut di Kecamatan Cikajang, Tahun 2016**

*Tabel. 4. 3.01 : The number of adherent according Religion Religion Embraced in District Cikajang, 2016*

| Desa/ Kel          | Islam         | Protestan | Katolik  | Hindu    | Budha    |
|--------------------|---------------|-----------|----------|----------|----------|
| (1)                | (2)           | (3)       | (4)      | (5)      | (6)      |
| 001. Cipangramatan | 5.991         | -         | -        | -        | -        |
| 002. Mekarjaya     | 7.205         | -         | -        | -        | -        |
| 003. Girijaya      | 8.316         | -         | -        | -        | -        |
| 004. Giriawas      | 7.243         | 6         | -        | -        | -        |
| 005. Cibodas       | 10.296        | 24        | 1        | -        | -        |
| 006. Cikajang      | 4.784         | 1         | 6        | -        | -        |
| 007. Padasuka      | 6.874         | 13        | -        | -        | -        |
| 008. Mekarsari     | 6.414         | 10        | -        | -        | -        |
| 009. Simpang       | 10.236        | -         | -        | -        | -        |
| 010. Cikandang     | 6.591         | -         | -        | -        | -        |
| 011. Margamulya    | 6.913         | -         | -        | -        | -        |
| 012. Karamatwangi  | 5.258         | -         | -        | -        | -        |
| <b>halmuJ</b>      | <b>86.121</b> | <b>54</b> | <b>7</b> | <b>-</b> | <b>-</b> |

*Sumber :Desa*

**Tabel. 4.3.02 : Jumlah Tempat Peribadatan Di di Kecamatan Cikajang, Tahun 2016**

*Tabel. 4.3.02 : Total Places of Worship In The District of Cikajang, 2016*

| Desa/ Kel          | Mesjid | Mushola/<br>Langgar | Gereja | Pura | Vihara |
|--------------------|--------|---------------------|--------|------|--------|
| (1)                | (2)    | (3)                 | (4)    | (5)  | (6)    |
| 001. Cipangramatan | 11     | 33                  | -      | -    | -      |
| 002. Mekarjaya     | 11     | 48                  | -      | -    | -      |
| 003. Girijaya      | 13     | 57                  | -      | -    | -      |
| 004. Giriawas      | 12     | 34                  | -      | -    | -      |
| 005. Cibodas       | 10     | 47                  | -      | -    | -      |
| 006. Cikajang      | 7      | 16                  | -      | -    | -      |
| 007. Padasuka      | 10     | 22                  | -      | -    | -      |
| 008. Mekarsari     | 14     | 16                  | -      | -    | -      |
| 009. Simpang       | 28     | 37                  | -      | -    | -      |
| 010. Cikandang     | 16     | 28                  | -      | -    | -      |
| 011. Margamulya    | 14     | 36                  | -      | -    | -      |
| 012. Karamatwangi  | 12     | 25                  | -      | -    | -      |
| halmuJ             | 158    | 399                 | -      | -    | -      |

*Sumber :Desa*

**Tabel. 4. 3.03 : Jumlah Perkawinan per Bulan menurut Desa/Kel. di Kecamatan Cikajang, Tahun 2016**

*Tabel. 4. 3.03 : The number of marriages per Month according to rural / Ex. in District Cikajang, 2016*

| Desa/ Kel          | Januari | Peb-<br>ruari | Maret | April | Mei | Juni |
|--------------------|---------|---------------|-------|-------|-----|------|
| (1)                | (2)     | (3)           | (4)   | (5)   | (6) | (7)  |
| 001. Cipangramatan | 2       | 9             | 5     | 5     | 2   | 15   |
| 002. Mekarjaya     | 2       | 9             | 9     | 3     | 5   | 4    |
| 003. Girijaya      | 1       | 11            | 10    | 6     | 11  | 7    |
| 004. Giriawas      | 2       | 11            | 14    | 5     | 8   | 8    |
| 005. Cibodas       | 5       | 10            | 14    | 12    | 4   | 11   |
| 006. Cikajang      | 1       | 5             | 7     | 3     | 4   | 3    |
| 007. Padasuka      | 5       | 9             | 5     | 6     | 9   | 4    |
| 008. Mekarsari     | 1       | 7             | 10    | 6     | 11  | 9    |
| 009. Simpang       | -       | 21            | 15    | 5     | 12  | 8    |
| 010. Cikandang     | 6       | 12            | 10    | 3     | 8   | 9    |
| 011. Margamulya    | 5       | 7             | 3     | 4     | 1   | 8    |
| 012. Karamatwangi  | -       | 6             | 9     | 7     | 6   | 4    |
| Jumlah             | 30      | 117           | 111   | 65    | 81  | 90   |

Sumber :KUA

Tabel. 4. 3.03 : Lanjutan

Table. 4. 3:03: Advanced

| Desa/ Kel          | Juli | Agustus | September | Oktober | Nopember | Desember |
|--------------------|------|---------|-----------|---------|----------|----------|
| (1)                | (7)  | (8)     | (9)       | (10)    | (11)     | (12)     |
| 001. Cipangramatan | 4    | 2       | 12        | 11      | 4        | 2        |
| 002. Mekarjaya     | 13   | 1       | 3         | 15      | 19       | 7        |
| 003. Girijaya      | 9    | 5       | 11        | 7       | 20       | 2        |
| 004. Giriawas      | 11   | 2       | 4         | 10      | 9        | 2        |
| 005. Cibodas       | 11   | 2       | 9         | 14      | 11       | 1        |
| 006. Cikajang      | 2    | 2       | 6         | 4       | 10       | 2        |
| 007. Padasuka      | 8    | 1       | 8         | 13      | 13       | 2        |
| 008. Mekarsari     | 7    | 3       | 12        | 7       | 15       | 6        |
| 009. Simpang       | 8    | 1       | 7         | 13      | 24       | 7        |
| 010. Cikandang     | 1    | 4       | 4         | 9       | 10       | 5        |
| 011. Margamulya    | 6    | 5       | 6         | 7       | 13       | 4        |
| 012. Karamatwangi  | 5    | 2       | 3         | 5       | 11       | 4        |
| halmuJ             | 85   | 30      | 85        | 115     | 159      | 44       |

Sumber :KUA

**Tabel. 4.4.01 : Jumlah Lapangan Olah Raga Menurut Jenis Kegiatan di Kecamatan Cikajang, Tahun 2016**

*Tabel. 4.4.01 : Number Field Sports by Type of Activity in District Cikajang, 2016*

| Desa/ Kelurahan    | Sepak Bola | Bola Voly | Bulu Tangkis | Tenis Meja | Futsal |
|--------------------|------------|-----------|--------------|------------|--------|
| (1)                | (2)        | (3)       | (4)          | (5)        | (6)    |
| 001. Cipangramatan | 1          | 5         | 1            | 2          | -      |
| 002. Mekarjaya     | 2          | 1         | 1            | 4          | -      |
| 003. Girijaya      | 1          | 6         | 1            | 10         | -      |
| 004. Giriawas      | 1          | 3         | 1            | 6          | -      |
| 005. Cibodas       | 1          | 5         | 1            | 7          | 2      |
| 006. Cikajang      | 1          | 2         | 4            | 3          | -      |
| 007. Padasuka      | -          | 4         | 1            | 7          | -      |
| 008. Mekarsari     | 1          | 4         | 2            | 5          | -      |
| 009. Simpang       | 2          | 2         | 2            | 4          | -      |
| 010. Cikandang     | 2          | 4         | 1            | 1          | -      |
| 011. Margamulya    | 1          | 3         | 2            | 4          | -      |
| 012. Karamatwangi  | 2          | 4         | 1            | 2          | -      |
| halmuJ             | 15         | 43        | 18           | 55         | 2      |

Sumber :Desa

**Tabel. 4.4.02 : Jumlah Penyandang Cacat Menurut Jenis Kecacatan di Kecamatan Cikajang, Tahun 2016**

*Tabel. 4.4.02 : Number of Persons with Disabilities by Type of Disability in District Cikajang, 2016*

| Desa/ Kelurahan    | Tuna Netra (buta) | Tuna Runggu (bisu-tuli) | Tuna Grahita (Mental) | Tuna Daksa (C.tubuh) | Tuna Ganda |
|--------------------|-------------------|-------------------------|-----------------------|----------------------|------------|
| (1)                | (2)               | (3)                     | (4)                   | (5)                  | (6)        |
| 001. Cipangramatan | 1                 | 2                       | 1                     | 2                    | 2          |
| 002. Mekarjaya     | 5                 | 2                       | -                     | 3                    | 3          |
| 003. Girijaya      | 10                | 9                       | -                     | 4                    | 4          |
| 004. Giriawas      | 1                 | 2                       | 2                     | 4                    | 2          |
| 005. Cibodas       | 3                 | 5                       | 5                     | 4                    | 8          |
| 006. Cikajang      | -                 | -                       | 1                     | 2                    | -          |
| 007. Padasuka      | 3                 | 4                       | 1                     | 1                    | 2          |
| 008. Mekarsari     | 1                 | 2                       | 4                     | 5                    | 2          |
| 009. Simpang       | 1                 | 1                       | -                     | -                    | 2          |
| 010. Cikandang     | 3                 | 2                       | 1                     | 1                    | 2          |
| 011. Margamulya    | 3                 | 4                       | -                     | -                    | 4          |
| 012. Karamatwangi  | 1                 | 1                       | 1                     | 1                    | 1          |
| halmuJ             | 32                | 34                      | 16                    | 27                   | 32         |

Sumber :Desa



<https://garutkab.bps.go.id>

***BAB 5***  
***PERTANIAN***  
***AGRICULTURE***

*Social*

<https://garutkab.bps.go.id>

**Tabel 5.1.01 : Luas Lahan Sawah dan Bukan sawah Menurut Desa/Kel. di Kecamatan Cikajang, Tahun 2016**

*Tabel 5.1.01 : Area Wetland and not paddy According to the Village / Ex. in District Cikajang, 2016*

| Desa/ Kel          | Lahan Sawah | Bukan Lahan Sawah |         |           | Total     |
|--------------------|-------------|-------------------|---------|-----------|-----------|
|                    |             | Lahan Kering      | Lainnya | Jumlah    |           |
| (1)                | (2)         | (3)               | (4)     | (5)       | (6)       |
| 001. Cipangramatan | 63,00       | 1674              | 29,20   | 1.756,00  | 1.810,00  |
| 002. Mekarjaya     | -           | 400,40            | 174,10  | 574,50    | 574,50    |
| 003. Girijaya      | -           | 259,75            | 21,26   | 281,01    | 281,01    |
| 004. Giriawas      | -           | 101,44            | 15,56   | 117,00    | 117,00    |
| 005. Cibodas       | -           | 180,80            | 26,00   | 206,80    | 206,80    |
| 006. Cikajang      | -           | 47,40             | 52,70   | 100,10    | 100,10    |
| 007. Padasuka      | -           | 50,00             | 60,00   | 110,00    | 110,00    |
| 008. Mekarsari     | -           | 167,00            | 43,00   | 210,00    | 210,00    |
| 009. Simpang       | 32,00       | 666,00            | 99,00   | 765,00    | 797,00    |
| 010. Cikandang     | -           | 540,08            | 21,42   | 561,50    | 561,50    |
| 011. Margamulya    | -           | 1.287,51          | 30,34   | 1.317,85  | 1.317,85  |
| 012. Karamatwangi  | 21,00       | 2103,08           | 22,80   | 2125,88   | 2146,88   |
| halmuJ             | 136,00      | 3670.38           | 543.375 | 4.243.755 | 4.275.764 |

Sumber :Desa

**Tabel 5.1.02 : Luas Tanam (Ha),Produksi (Kwintal) Bawang Daun di Kecamatan Cikajang, Tahun 2015**

**Tabel 5.1.02 : Land Area Harvested (Ha), Production (kwintal)of onion in District Cikajang, 2015**

| Desa/ Kel          | Luas tanam (Ha) | Produksi (Kwintal) |
|--------------------|-----------------|--------------------|
| (1)                | (8)             | (10)               |
| 001. Cipangramatan | 5.61            | 134,7              |
| 002. Mekarjaya     | 16.43           | 367,2              |
| 003. Girijaya      | 18.48           | 413,1              |
| 004. Giriawas      | 20.53           | 459,0              |
| 005. Cibodas       | 10.27           | 229,5              |
| 006. Cikajang      | 6.16            | 137,7              |
| 007. Padasuka      | 26.69           | 596,7              |
| 008. Mekarsari     | 20.53           | 459,0              |
| 009. Simpang       | 24.64           | 550,8              |
| 010. Cikandang     | 22.58           | 504,9              |
| 011. Margamulya    | 26.69           | 596,3              |
| 012. Karamatwangi  | 5.39            | 137,5              |
| <b>Jumlah</b>      | <b>204</b>      | <b>4.586,4</b>     |

Sumber : UPTD pertanian

**Tabel 5.1.02 : Luas Tanam (Ha),Produksi (Kwintal) Kentang di Kecamatan Cikajang, Tahun 2016**

**Tabel 5.1.02 :** *Land Area Harvested (Ha), Production (kwintal)of Potatos in District Cikajang, 2016*

| Desa/ Kel          | Luas tanam (Ha) | Produksi (Kwintal) |
|--------------------|-----------------|--------------------|
| (1)                | (8)             | (10)               |
| 001. Cipangramatan | 44.26           | 768,9              |
| 002. Mekarjaya     | 143.76          | 3123,0             |
| 003. Girijaya      | 146.70          | 3321,0             |
| 004. Giriawas      | 129.38          | 2810,7             |
| 005. Cibodas       | 86.25           | 1873,8             |
| 006. Cikajang      | 71.88           | 1561,5             |
| 007. Padasuka      | 129.38          | 2810,7             |
| 008. Mekarsari     | 86.25           | 1873,8             |
| 009. Simpang       | 186.88          | 4059,9             |
| 010. Cikandang     | 215.64          | 4684,5             |
| 011. Margamulya    | 172.51          | 3747,6             |
| 012. Karamatwangi  | 29.11           | 617,0              |
| <b>Jumlah</b>      | <b>1442</b>     | <b>31.252,4</b>    |

Sumber : UPTD pertanian

**Tabel 5.1.02 : Luas Tanam (Ha),Produksi (Kwintal) Kol di Kecamatan Cikajang, Tahun 2015**  
**Tabel 5.1.02 : Land Area Harvested (Ha), Production (kwintal)of Cabbage in District Cikajang, 2015**

| Desa/ Kel          | Luas tanam (Ha) | Produksi (Kwintal) |
|--------------------|-----------------|--------------------|
| (1)                | (8)             | (10)               |
| 001. Cipangramatan | 22.77           | 100,1              |
| 002. Mekarjaya     | 114.96          | 5435,1             |
| 003. Girijaya      | 135.87          | 6423,3             |
| 004. Giriawas      | 73.16           | 3458,7             |
| 005. Cibodas       | 52.26           | 2470,5             |
| 006. Cikajang      | 39.50           | 1893,0             |
| 007. Padasuka      | 83.61           | 3952,8             |
| 008. Mekarsari     | 73.16           | 3458,7             |
| 009. Simpang       | 104.51          | 4941,0             |
| 010. Cikandang     | 146.32          | 6917,4             |
| 011. Margamulya    | 167.22          | 7905,6             |
| 012. Karamatwangi  | 19.66           | 84,3               |
| Jumlah             | 1033            | 47.040,5           |

Sumber : UPTD pertanian

**Tabel 5.1.02 : Luas Tanam (Ha),Produksi (Kwintal) Petsai di Kecamatan Cikajang, Tahun 2015**

**Tabel 5.1.02 :** *Land Area Harvested (Ha), Production (kwintal) of Pecai in District Cikajang, 2015*

| Desa/ Kel          | Luas tanam (Ha) | Produksi (Kwintal) |
|--------------------|-----------------|--------------------|
| (1)                | (8)             | (10)               |
| 001. Cipangramatan | 15.93           | 670,2              |
| 002. Mekarjaya     | 38.95           | 1443,8             |
| 003. Girijaya      | 36.68           | 1414,7             |
| 004. Giriawas      | 19.48           | 1761,0             |
| 005. Cibodas       | 8.35            | 1173,0             |
| 006. Cikajang      | 6.35            | 1026,0             |
| 007. Padasuka      | 11.34           | 886,5              |
| 008. Mekarsari     | 13.91           | 2220,0             |
| 009. Simpang       | 36.98           | 11866,5            |
| 010. Cikandang     | 33.64           | 2971,5             |
| 011. Margamulya    | 34.52           | 3718,5             |
| 012. Karamatwangi  | 14.86           | 482,0              |
| Jumlah             | 271             | 29.633,6           |

Sumber : UPTD pertanian

**Tabel 5.1.02 : Luas Tanam (Ha),Produksi (Kwintal) Wortel di Kecamatan Cikajang, Tahun 2015**

**Tabel 5.1.02 : Land Area Harvested (Ha), Production (kwintal)of Carrot in District Cikajang, 2015**

| Desa/ Kel          | Luas tanam (Ha) | Produksi (Kwintal) |
|--------------------|-----------------|--------------------|
| (1)                | (8)             | (10)               |
| 001. Cipangramatan | 37.59           | 1098,0             |
| 002. Mekarjaya     | 67.46           | 2107,9             |
| 003. Girijaya      | 79.72           | 2491,1             |
| 004. Giriawas      | 55.19           | 1724,6             |
| 005. Cibodas       | 36.79           | 1149,8             |
| 006. Cikajang      | 30.66           | 958,1              |
| 007. Padasuka      | 31.63           | 970,9              |
| 008. Mekarsari     | 36.79           | 1149,8             |
| 009. Simpang       | 55.19           | 1724,6             |
| 010. Cikandang     | 73.59           | 2299,5             |
| 011. Margamulya    | 74.73           | 2131,5             |
| 012. Karamatwangi  | 38.64           | 365,5              |
| <b>Jumlah</b>      | <b>618</b>      | <b>18.171,3</b>    |

Sumber : UPTD pertanian



**Tabel 5.1.02 : Luas Tanam (Ha),Produksi (Kwintal) Kacang Merah di Kecamatan Cikajang, Tahun 2015**  
*Land Area Harvested (Ha), Production (kwintal)of Kidney bean in District Cikajang, 2015*

| Desa/ Kel          | Luas tanam (Ha) | Produksi (Kwintal) |
|--------------------|-----------------|--------------------|
| (1)                | (8)             | (10)               |
| 001. Cipangramatan | 9.77            | 168,3              |
| 002. Mekarjaya     | 14.62           | 141,0              |
| 003. Girijaya      | 16.08           | 155,1              |
| 004. Giriawas      | 11.70           | 112,8              |
| 005. Cibodas       | 7.31            | 70,5               |
| 006. Cikajang      | 4.39            | 42,3               |
| 007. Padasuka      | 7.48            | 70,5               |
| 008. Mekarsari     | 10.23           | 98,7               |
| 009. Simpang       | 20.47           | 197,4              |
| 010. Cikandang     | 19.01           | 183,3              |
| 011. Margamulya    | 17.54           | 169,2              |
| 012. Karamatwangi  | 6.41            | 139,2              |
| <b>Jumlah</b>      | <b>145</b>      | <b>1.548,3</b>     |

Sumber : UPTD pertanian

**Luas Tanam (Ha),Produksi (Kwintal) Cabe  
kriting di Kecamatan Cikajang, Tahun 2015**  
*Land Area Harvested (Ha), Production  
(kwintal)of Red pepper in District Cikajang,  
2015*

| Desa/ Kel          | Luas tanam (Ha) | Produksi (Kwintal) |
|--------------------|-----------------|--------------------|
| (1)                | (8)             | (10)               |
| 001. Cipangramatan | 16.07           | 512,1              |
| 002. Mekarjaya     | 63.82           | 211,8              |
| 003. Girijaya      | 64.21           | 228,3              |
| 004. Giriawas      | 10.62           | 339,0              |
| 005. Cibodas       | 25.53           | 847,5              |
| 006. Cikajang      | 19.15           | 635,6              |
| 007. Padasuka      | 57.44           | 1906,8             |
| 008. Mekarsari     | 51.06           | 1695,0             |
| 009. Simpang       | 63.82           | 211,8              |
| 010. Cikandang     | 82.97           | 2754,0             |
| 011. Margamulya    | 76.59           | 2542,5             |
| 012. Karamatwangi  | 16.73           | 426,0              |
| Jumlah             | 548.00          | 12.310             |

Sumber : UPTD pertanian

**Tabel 5.1.02 : Luas Tanam (Ha),Produksi (Kwintal) Tomat di Kecamatan Cikajang, Tahun 2015**

**Tabel 5.1.02 :** *Land Area Harvested (Ha), Production (kwintal)of Tomatoin District Cikajang, 2015*

| Desa/ Kel          | Luas tanam (Ha) | Produksi (Kwintal) |
|--------------------|-----------------|--------------------|
| (1)                | (8)             | (10)               |
| 001. Cipangramatan | 13.38           | 527,4              |
| 002. Mekarjaya     | 78.16           | 3053,7             |
| 003. Girijaya      | 78.69           | 2979,0             |
| 004. Giriawas      | 60.12           | 2349,0             |
| 005. Cibodas       | 61.75           | 2344,5             |
| 006. Cikajang      | 48.10           | 1879,2             |
| 007. Padasuka      | 42.09           | 1644,3             |
| 008. Mekarsari     | 42.98           | 3433,5             |
| 009. Simpang       | 60.12           | 1409,4             |
| 010. Cikandang     | 54.11           | 2113,8             |
| 011. Margamulya    | 54.43           | 1994,0             |
| 012. Karamatwangi  | 14.07           | 346,0              |
| Jumlah             | 608.00          | 23.546             |

Sumber : UPTD pertanian

**Tabel 5.1.02 : Luas Tanam (Ha),Produksi (Kwintal) Buncis di Kecamatan Cikajang, Tahun 2015**  
*Land Area Harvested (Ha), Production (kwintal)of Stringbean in District Cikajang, 2015*

| Desa/ Kel          | Luas tanam (Ha) | Produksi (Kwintal) |
|--------------------|-----------------|--------------------|
| (1)                | (8)             | (10)               |
| 001. Cipangramatan | 2.29            | 11,8               |
| 002. Mekarjaya     | 12.62           | 108,9              |
| 003. Girijaya      | 14.91           | 128,7              |
| 004. Giriawas      | 16.06           | 138,6              |
| 005. Cibodas       | 6.88            | 59,4               |
| 006. Cikajang      | 2.29            | 19,5               |
| 007. Padasuka      | 5.74            | 49,5               |
| 008. Mekarsari     | 6.88            | 59,4               |
| 009. Simpang       | 11.47           | 99,0               |
| 010. Cikandang     | 16.06           | 138,6              |
| 011. Margamulya    | 19.50           | 168,3              |
| 012. Karamatwangi  | 1.27            | 8,9                |
| <b>Jumlah</b>      | <b>116.00</b>   | <b>991</b>         |

Sumber : UPTD pertanian

**Tabel 5.1.02 : Luas Tanam (Ha),Produksi (Kwintal) Labu siam di Kecamatan Cikajang, Tahun 2015**

**Tabel 5.1.02 :** *Land Area Harvested (Ha), Production (kwintal)of Vegetable marrow in District Cikajang, 2015*

| Desa/ Kel          | Luas tanam (Ha) | Produksi (Kwintal) |
|--------------------|-----------------|--------------------|
| (1)                | (8)             | (10)               |
| 001. Cipangramatan | 0.63            | 151,7              |
| 002. Mekarjaya     | 9.17            | 16948,8            |
| 003. Girijaya      | 10.84           | 20030,4            |
| 004. Giriawas      | 11.67           | 21571,2            |
| 005. Cibodas       | 5.00            | 919,8              |
| 006. Cikajang      | 1.67            | 3081,6             |
| 007. Padasuka      | 4.17            | 7704,0             |
| 008. Mekarsari     | 5.00            | 9244,5             |
| 009. Simpang       | 8.34            | 15408,0            |
| 010. Cikandang     | 11.67           | 21571,2            |
| 011. Margamulya    | 14.17           | 26193,6            |
| 012. Karamatwangi  | 0.68            | 124,7              |
| Jumlah             | 83.00           | 142.950            |

Sumber : UPTD pertanian

**Tabel 5.1.12 : Produksi, Tanaman Buah-buahan Menurut Jenis Tanaman di Kecamatan Cikajang, Tahun 2015 (kwintal)**

*Tabel 5.1.12 : Production, Plant Fruits by Type Plants in District Cikajang, 2016 (quintals)*

| Nama Buah  | Jumlah Pohon | Produktivitas Kg/pohon | Produksi Kwintal |
|------------|--------------|------------------------|------------------|
| (1)        | (2)          | (3)                    | (4)              |
| Alpukat    | 1500         | 196.67                 | 2950             |
| Jambu Biji | 4500         | 65                     | 2925             |
| Jambu Air  | 100          | 52                     | 52               |
| Jeruk siam | 12000        | 48.92                  | 5870             |
| Nangka     | 2000         | 62.05                  | 1241             |
| pepaya     | 420          | 24.29                  | 102              |
| pisang     | 49150        | 25.40                  | 12485            |
| Belimbing  | 125          | 37.60                  | 47               |
| Markisa    | 200          | 12                     | 24               |

Sumber: Dinas Pertanian

**Tabel 5.1.13 : Luas Tanam dan Produksi Tanaman Perkebunan menurut Jenis Komoditi di Kecamatan Cikajang, Tahun 2015**

*Tabel 5.1.13 : Planted and Plantation Crops Production by Type of Commodity in District Cikajang, 2016*

| Nama Komoditi | Luas Lahan<br>(Ha) | Produksi<br>(Kwintal) |
|---------------|--------------------|-----------------------|
| (1)           | (2)                | (3)                   |
| Teh           | 268                | 382                   |
| kopi          | 424                | 194                   |
| kina          | 14                 | 10,8                  |
| Kelapa        | 5                  | 4                     |
| aren          | 92                 | 40,2                  |
| Jumlah        | 803                | 631                   |

Sumber :Dinas Perkebunan

**Tabel 5.2.01 : Populasi Jumlah Ternak Menurut Jenis Ternak di Kecamatan Cikajang, Tahun 2016**

*Tabel 5.2.01 : Number of Livestock Population by Type of Livestock in District Cikajang, 2016*

| Desa / Kel         | Sapi Perah  | Kambing     | Domba       | Kuda      | Kerbau   |
|--------------------|-------------|-------------|-------------|-----------|----------|
| (1)                | (2)         | (3)         | (4)         | (5)       | (6)      |
| 001. Cipangramatan | 337         | 253         | 534         | -         | 7        |
| 002. Mekarjaya     | 263         | 131         | 816         | -         | -        |
| 003. Girijaya      | 321         | 218         | 769         | 6         | -        |
| 004. Giriawas      | 282         | 53          | 492         | 4         | -        |
| 005. Cibodas       | 168         | 57          | 386         | -         | -        |
| 006. Cikajang      | 72          | 34          | 398         | -         | -        |
| 007. Padasuka      | 116         | 112         | 384         | -         | -        |
| 008. Mekarsari     | 124         | 36          | 667         | -         | -        |
| 009. Simpang       | 442         | 19          | 612         | -         | -        |
| 010. Cikandang     | 589         | 118         | 1273        | -         | -        |
| 011. Margamulya    | 102         | 23          | 691         | -         | -        |
| 012. Karamatwangi  | 264         | 216         | 547         | -         | -        |
| <b>Jumlah</b>      | <b>3080</b> | <b>1270</b> | <b>7569</b> | <b>10</b> | <b>7</b> |

Sumber : UPTD Peternakan



**Tabel 5.2.02 : Populasi Jumlah Unggas Menurut Jenis Unggas di Kecamatan Cikajang, Tahun 2015**

*Tabel 5.2.02 : Total Population by Type Poultry Poultry in District Cikajang, 2016*

| Desa / Kel         | Ayam Kampung | Ayam Pedaging | Itik     | Itik Manila |
|--------------------|--------------|---------------|----------|-------------|
| (1)                | (2)          | (3)           | (4)      | (5)         |
| 001. Cipangramatan | 6763         | -             | -        | -           |
| 002. Mekarjaya     | 5352         | -             | -        | -           |
| 003. Girijaya      | 4847         | -             | -        | -           |
| 004. Giriawas      | 6291         | -             | -        | -           |
| 005. Cibodas       | 2931         | -             | -        | -           |
| 006. Cikajang      | 1682         | -             | -        | -           |
| 007. Padasuka      | 1894         | 28000         | -        | -           |
| 008. Mekarsari     | 4272         | -             | -        | -           |
| 009. Simpang       | 5966         | -             | -        | -           |
| 010. Cikandang     | 3243         | -             | -        | -           |
| 011. Margamulya    | 6214         | -             | -        | -           |
| 012. Karamatwangi  | 5927         | -             | -        | -           |
| <b>Jumlah</b>      | <b>55382</b> | <b>28000</b>  | <b>-</b> | <b>-</b>    |

Sumber : UPTD Peternakan

**Tabel 5.3.01 : Luas Lahan Tempat Pemeliharaan/Penangkapan Perikanan Darat di Kecamatan Cikajang, Tahun 2016**

*Tabel 5.3.01 : The Land Area Maintenance / Fishing Inland Fisheries in Sub Cikajang, 2016*

| Desa / Kel         | Kolam       | Sawah    | Danau    | Sungai   |
|--------------------|-------------|----------|----------|----------|
| (1)                | (2)         | (3)      | (4)      | (5)      |
| 001. Cipangramatan | 7           | -        | -        | -        |
| 002. Mekarjaya     | 4.6         | -        | -        | -        |
| 003. Girijaya      | 6.8         | -        | -        | -        |
| 004. Giriawas      | 6           | -        | -        | -        |
| 005. Cibodas       | 1,5         | -        | -        | -        |
| 006. Cikajang      | 2           | -        | -        | -        |
| 007. Padasuka      | 2.6         | -        | -        | -        |
| 008. Mekarsari     | 3.3         | -        | -        | -        |
| 009. Simpang       | 3.2         | -        | -        | -        |
| 010. Cikandang     | 5.7         | -        | -        | -        |
| 011. Margamulya    | 5.9         | -        | -        | -        |
| 012. Karamatwangi  | 6           | -        | -        | -        |
| <b>Jumlah</b>      | <b>53.1</b> | <b>-</b> | <b>-</b> | <b>-</b> |

Sumber : Peternakan

<https://garutkab.bps.go.id>

***BAB 6***  
***INDUSTRI***  
***PENGOLAHAN***  
***INDUSTRY***

*Industry*

<https://garutkab.bps.go.id>

**Tabel 6.01 : Banyaknya Industri Kecil/ Kerajinan Rumah Tangga di Kecamatan Cikajang, Tahun 2016**

*Tabel 6.01 : Number of Small Industry / Crafts Households in District Cikajang, 2016*

| Desa/ KelurahanD   | Kerajinan Makanan | Kerajinan dari Kayu | Ker. dari logam/ logam Mulia | Anyaman |
|--------------------|-------------------|---------------------|------------------------------|---------|
| (1)                | (2)               | (3)                 | (4)                          | (5)     |
| 001. Cipangramatan | 169               | 5                   | 3                            | 15      |
| 002. Mekarjaya     | 16                | 2                   | -                            | 2       |
| 003. Girijaya      | 14                | 2                   | -                            | -       |
| 004. Giriawas      | 15                | 1                   | 1                            | -       |
| 005. Cibodas       | 38                | 6                   | -                            | -       |
| 006. Cikajang      | 7                 | 7                   | 2                            | -       |
| 007. Padasuka      | 10                | 8                   | -                            | -       |
| 008. Mekarsari     | 12                | 9                   | 1                            | -       |
| 009. Simpang       | 27                | 7                   | -                            | -       |
| 010. Cikandang     | 19                | 2                   | 4                            | -       |
| 011. Margamulya    | 6                 | 1                   | -                            | -       |
| 012. Karamatwangi  | 183               | 6                   | -                            | 12      |
| Jumlah             | 516               | 56                  | 11                           | 29      |

Sumber : Desa

**Tabel 6.02 : Jumlah Kegiatan Usaha di Kecamatan Cikajang, Tahun 2016**

*Tabel 6.02 : Number of Operations in the District Cikajang, 2016*

| Desa/ Kelurahan    | Bengkel Mobi/<br>Motor | Reparasi<br>Elektro-nik | BengkelLas |
|--------------------|------------------------|-------------------------|------------|
| (1)                | (2)                    | (3)                     | (4)        |
| 001. Cipangramatan | 7                      | 2                       | 1          |
| 002. Mekarjaya     | 6                      | 4                       | 2          |
| 003. Girijaya      | 6                      | 2                       | 2          |
| 004. Giriawas      | 8                      | 1                       | -          |
| 005. Cibodas       | 22                     | 4                       | 5          |
| 006. Cikajang      | 8                      | 2                       | -          |
| 007. Padasuka      | 28                     | 7                       | 3          |
| 008. Mekarsari     | 16                     | 2                       | -          |
| 009. Simpang       | 9                      | 3                       | 1          |
| 010. Cikandang     | 7                      | 2                       | 2          |
| 011. Margamulya    | 6                      | 2                       | 1          |
| 012. Karamatwangi  | 4                      | 1                       | 2          |
| Jumlah             |                        |                         |            |

Sumber : Desa

**Tabel 6.02 : Jumlah Kegiatan Usaha di Kecamatan Cikajang, Tahun 2016**

*Tabel 6.02 : Number of Operations in the District Cikajang, 2016*

| rahanDesa/ Kelu    | Usaha<br>Photo copy | Pangkas<br>Rambut | Salon/ Tata Rias |
|--------------------|---------------------|-------------------|------------------|
| (1)                | (5)                 | (6)               | (7)              |
| 001. Cipangramatan | -                   | -                 | -                |
| 002. Mekarjaya     | 1                   | 1                 | -                |
| 003. Girijaya      | -                   | -                 | -                |
| 004. Giriawas      | 1                   | -                 | -                |
| 005. Cibodas       | 2                   | 5                 | 4                |
| 006. Cikajang      | 3                   | -                 | 1                |
| 007. Padasuka      | -                   | 2                 | 10               |
| 008. Mekarsari     | -                   | 2                 |                  |
| 009. Simpang       | 2                   | 1                 | 2                |
| 010. Cikandang     | 1                   | -                 | 2                |
| 011. Margamulya    | -                   | 1                 | 1                |
| 012. Karamatwangi  | -                   | -                 | -                |
| Jumlah             |                     |                   |                  |

*Sumber : Desa*

**Tabel 6.03 : Jumlah Toko di Kecamatan Cikajang, Tahun 2016**

*Tabel 6.03 : Number of Stores in District Cikajang, 2016*

| Kelurahan /Desa    | Pasar |      | Toserba/<br>Minimarket | Toko | Warung |
|--------------------|-------|------|------------------------|------|--------|
|                    | Kios  | Los  |                        |      |        |
| (1)                | (2)   | (3)  | (4)                    | (5)  | (6)    |
| 001. Cipangramatan | -     | -    | -                      | -    | 52     |
| 002. Mekarjaya     | -     | -    | 1                      | -    | 58     |
| 003. Girijaya      | -     | -    | -                      | -    | 56     |
| 004. Giriawas      | -     | -    | -                      | -    | 96     |
| 005. Cibodas       | 1093  | 1432 | 4                      | 79   | 101    |
| 006. Cikajang      | -     | -    | 3                      | 31   | 70     |
| 007. Padasuka      | -     | -    | 1                      | 36   | 97     |
| 008. Mekarsari     | -     | -    | -                      | -    | 88     |
| 009. Simpang       | -     | -    | -                      | 8    | 116    |
| 010. Cikandang     | -     | -    | 1                      | -    | 94     |
| 011. Margamulya    | -     | -    | -                      | -    | 96     |
| 012. Karamatwangi  | -     | -    | -                      | -    | 56     |
| Jumlah             |       |      |                        |      |        |

*Sumber : Desa*



**Tabel. 6.04 : Jumlah Lembaga Keuangan Menurut Desa/ Kel Kecamatan Cikajang, Tahun 2016**

*Tabel. 6.04 : Number of Financial Institutions According to the village / subdistrict Ex Cikajang, 2016*

| Desa/ Kel          | Bank      | Koperasi  | Leasing   |
|--------------------|-----------|-----------|-----------|
| (1)                | (2)       | (3)       | (4)       |
| 001. Cipangramatan | -         | -         | -         |
| 002. Mekarjaya     | -         | 3         | -         |
| 003. Girijaya      | -         | -         | -         |
| 004. Giriawas      | -         | -         | -         |
| 005. Cibodas       | 4         | 4         | 1         |
| 006. Cikajang      | 7         | 5         | 1         |
| 007. Padasuka      | 1         | 5         | 6         |
| 008. Mekarsari     | -         | -         | 2         |
| 009. Simpang       | -         | -         | -         |
| 010. Cikandang     | -         | -         | -         |
| 011. Margamulya    | -         | -         | -         |
| 012. Karamatwangi  | -         | -         | -         |
| <b>Jumlah</b>      | <b>12</b> | <b>17</b> | <b>10</b> |

*Sumber :Desa*



# DATA

**MENCERDASKAN BANGSA**

**BADAN PUSAT STATISTIK  
KABUPATEN GARUT**

Jl.Pembangunan No.222 Tlp.(0262) 233273  
Tarogong Kidul - Garut 44151

