

KECAMATAN KAYAN HILIR DALAM ANGKA 2020



**BADAN PUSAT STATISTIK
KABUPATEN MALINAU**

KECAMATAN KAYAN HILIR DALAM ANGKA 2020



**BADAN PUSAT STATISTIK
KABUPATEN MALINAU**

KECAMATAN KAYAN HILIR DALAM ANGKA
Kayan Hilir Subdistrict in Figures
2020

ISSN: 2715-2340

No. Publikasi/*Publication Number*: 65010.2010

Katalog /*Catalog*: 1102001.6501040

Ukuran Buku/*Book Size*: 14,8 cm x 21 cm

Jumlah Halaman/*Number of Pages* : xxv + 87 hal/*pages*

Naskah/*Manuscript*:

Badan Pusat Statistik Kabupaten Malinau
BPS-Statistics of Malinau Regency

Penyunting/*Editor*:

Badan Pusat Statistik Kabupaten Malinau
BPS-Statistics of Malinau Regency

Gambar Kover/*Cover Design*:

Badan Pusat Statistik Kabupaten Malinau
BPS-Statistics of Malinau Regency

Ilustrasi Kover/*Cover Illustration*:

Balai Adat Kayan Hilir
Kayan Hilir Custom Hall

Diterbitkan oleh/*Published by*:

© BPS Kabupaten Malinau/*BPS-Statistics of Malinau Regency*

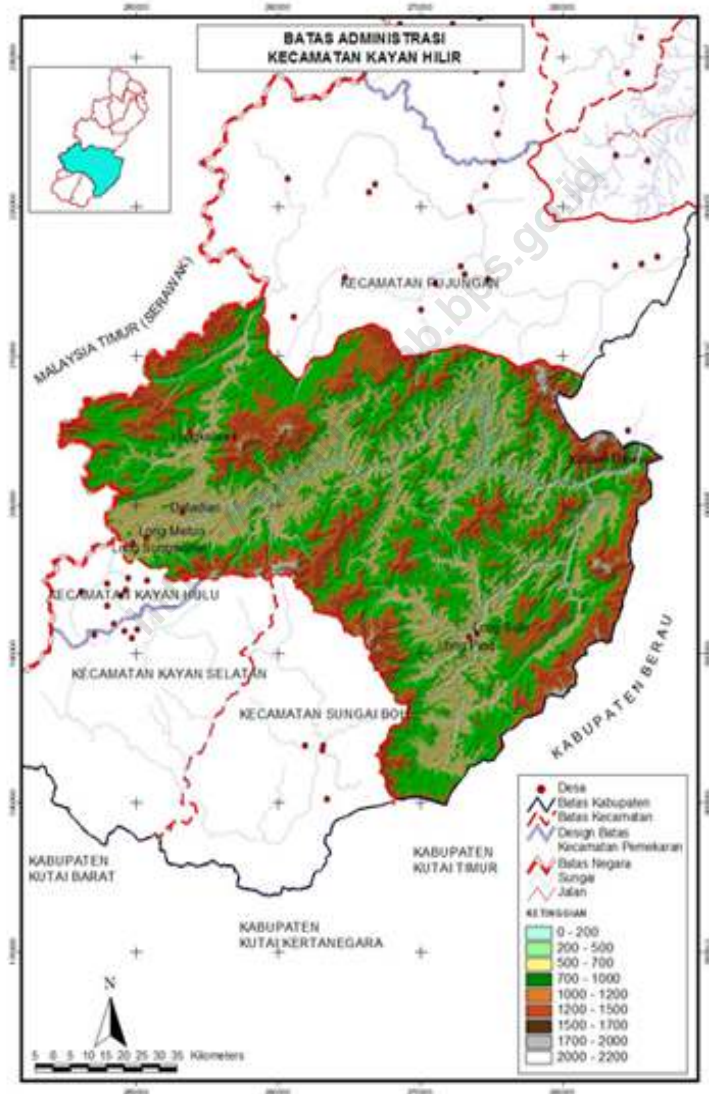
Dicetak oleh/*Printed by*:

-

Dilarang mengumumkan, mendistribusikan, mengomunikasikan, dan/atau menggandakan sebagian atau seluruh isi buku ini untuk tujuan komersil tanpa izin tertulis dari Badan Pusat Statistik.

Prohibited to announce, distribute, communicate, and/or copy part or all of this book for commercial purpose without permission from BPS-Statistics Indonesia.

PETA WILAYAH KECAMATAN KAYAN HILIR MAP OF KAYAN HILIR SUBDISTRICT



KEPALA BPS KABUPATEN MALINAU
CHIEF STATISTICIAN OF BPS-STATISTICS OF MALINAU REGENCY



SUPRIYANTO, SST.



KATA PENGANTAR

Kecamatan Kayan Hilir Dalam Angka 2020 merupakan publikasi tahunan yang diterbitkan oleh BPS Kabupaten Malinau. Publikasi ini memuat data/informasi statistik tentang hasil-hasil pembangunan di Wilayah Kecamatan Kayan Hilir selama 2019, yang banyak diperlukan dalam evaluasi pembangunan. Data yang disajikan dalam publikasi ini terdiri dari data primer hasil Sensus/Survei yang dilakukan oleh BPS Kabupaten Malinau dan data sekunder yang bersumber dari berbagai instansi/dinas/lembaga pemerintah. Publikasi ini terdiri dari 4 bab, mulai dari bab geografi dan iklim hingga pariwisata di Kayan Hilir.

Disadari bahwa publikasi ini belum sepenuhnya memenuhi harapan pihak pemakai data khususnya para perencana, namun diharapkan dapat membantu melengkapi penyusunan rencana pembangunan di Kecamatan ini. Publikasi ini dapat terwujud berkat kerjasama dan bantuan dari berbagai pihak baik instansi pemerintah maupun swasta.

Kepada semua pihak yang telah membantu kegiatan penyusunan dan penerbitan publikasi ini, kami mengucapkan terima kasih yang sebanyak-banyaknya. Akhirnya saran dan kritik yang membangun untuk perbaikan dan penyempurnaan publikasi ini di masa mendatang sangat kami harapkan. Semoga publikasi ini bermanfaat.

Malinau, September 2020

Kepala BPS
Kabupaten Malinau



Supriyanto, SST.



PREFACE

***Kayan Hilir Subdistrict in Figure 2020**, is an annual publication written by BPS-Statistics of Malinau Regency. This publication contains statistical data/ information on development outcomes in Kayan Hilir Subdistrict during 2019, which is much needed in the evaluation of development. The data presented in the publication consists of primary data from Census/Survey conducted by BPS-Statistics of Malinau Regency and secondary data sourced from various agencies/ government institutions. This publication contains 4 chapters, from geography and climate chapter to Tourism chapter.*

Honestly, this publication has not perfect yet and has not filled the user's hope, especially for the planners yet, but hopely it can help to equip compilation of development planning in this subdistrict. This comprehensive publication has been made possible with the assistance and contribution from several governmental institutions and private organizations.

To all parties who helped with the preparation and publication oh this book, we express our thanks. Finally, suggestions and constructive criticism for the improvement of this publication in the future are very much expected. Hopefully this publication will be useful.

*Malinau , April 2020
Chief Statistician of
BPS-Statistics of Malinau Regency*

Supriyanto, SST.

DAFTAR ISI / CONTENTS

	Halaman <i>Page</i>
Kata Pengantar/ <i>Preface</i>	vii
Daftar Isi/ <i>Contents</i>	ix
Daftar Tabel/ <i>List of Tables</i>	xi
Daftar Gambar/ <i>List of Figures</i>	xix
Daftar Singkatan/ <i>List of Abbreviations</i>	xxiii
Statistik Kunci/ <i>Key Statistics</i>	xxv
1. Geografi dan Iklim/ <i>Geography and Climate</i>	1
2. Sosial dan Kesejahteraan Rakyat/ <i>Social and Welfare</i>	7
3. Pertanian, Kehutanan, Peternakan, dan Perikanan/ <i>Agriculture, Forestry, Livestock, and Fishery</i>	49
4. Pariwisata/ <i>Tourism</i>	75

<https://malinaukab.bps.go.id>

DAFTAR TABEL/LIST OF TABLES

	Halaman Page
1. GEOGRAFI DAN IKLIM/GEOGRAPHY AND CLIMATE	1
1.1 KEADAAN GEOGRAFI GEOGRAPHY CONDITION	4
1.1.1 Luas dan Tinggi Daerah menurut Kecamatan di Kabupaten Malinau, 2019 <i>Total Area and Height of Region by Subdistrict in Malinau Regency, 2019.....</i>	4
2. PEMERINTAHAN/GOVERNMENT	7
2.1 PENDIDIKAN EDUCATION	11
2.1.1 Jumlah Desa/Kelurahan yang Memiliki Fasilitas Sekolah menurut Kelurahan/Desa di Kecamatan Kayan Hilir, 2014–2019 <i>Number of Villages/ Kelurahan Having Educational Facilities by by Kelurahan/Village in Kayan Hilir Subdistrict, 2014–2019.....</i>	11
2.1.2 Banyaknya Sekolah Dasar (SD) menurut Kelurahan/ Desa di Kecamatan Kayan Hilir, 2019 <i>Number of Primary Schools by Kelurahan/Village in Kayan Hilir Subdistrict, 2019.....</i>	16
2.1.3 Banyaknya Madrasah Ibtidaiyah (MI) menurut Kelurahan/ Desa di Kecamatan Kayan Hilir, 2019 <i>Number of Madrasah Ibtidaiyah (MI) by Kelurahan/Village in Kayan Hilir Subdistrict, 2019.....</i>	17
2.1.4 Banyaknya Sekolah Menengah Pertama (SMP) menurut Kelurahan/Desa di Kecamatan Kayan Hilir, 2019 <i>Number of Junior High Schools by Kelurahan/Village in Kayan Hilir Subdistrict, 2019.....</i>	18
2.1.5 Banyaknya Madrasah Tsanawiyah (MTs) menurut Kelurahan/Desa di Kecamatan Kayan Hilir, 2019 <i>Number of Madrasah Tsanawiyah (MTs) by Kelurahan/Village in Kayan Hilir Subdistrict, 2019.....</i>	19

2.1.6	Banyaknya Sekolah Menengah Atas (SMA) menurut Kelurahan/Desa di Kecamatan Kayan Hilir, 2019 <i>Number of Senior High Schools by Kelurahan/Village in Kayan Hilir Subdistrict, 2019</i>	20
2.1.7	Banyaknya Madrasah Aliyah (MA) menurut Kelurahan/Desa di Kecamatan Kayan Hilir, 2019 <i>Number of Madrasah Aliyah (MA) by Kelurahan/Village in Kayan Hilir Subdistrict, 2019</i>	21
2.1.8	Banyaknya Sekolah Menengah Kejuruan (SMK) menurut Kelurahan/Desa di Kecamatan Kayan Hilir, 2019 <i>Number of Vocational High Schools by Kelurahan/Village in Kayan Hilir Subdistrict, 2019</i>	22
2.1.9	Banyaknya Akademi/Perguruan Tinggi menurut Kelurahan/Desa di Kecamatan Kayan Hilir, 2019 <i>Number of Universities by Kelurahan/Village in Kayan Hilir Subdistrict, 2019</i>	23
2.1.10	Kemudahan Untuk Mencapai Sarana Pendidikan Terdekat Bagi Desa/Kelurahan yang Tidak ada Sarana Pendidikan menurut Kelurahan/Desa di Kecamatan Kayan Hilir, 2019 <i>The Ease of Access to Nearest Educational Facilities for Village/Kelurahan that not Having Educational Facilities by Kelurahan/Village in Kayan Hilir Subdistrict, 2019</i>	24
2.2	KESEHATAN HEALTH	26
2.2.1	Banyaknya Sarana Kesehatan menurut Kelurahan/Desa dan Jenis Sarana Kesehatan di Kecamatan Kayan Hilir, 2019 <i>Number of Health Facilities by Kelurahan/Village and Kind of Health Facilities in Kayan Hilir Subdistrict, 2019</i>	26
2.2.2	Jumlah Tenaga Kesehatan menurut Kelurahan/Desa di Kecamatan Kayan Hilir, 2019 <i>Number of Medical Personnel by Kelurahan/Village in Kayan Hilir Subdistrict, 2019</i>	28

2.2.3	Kemudahan Mencapai Sarana Kesehatan Terdekat Bagi Desa/Kelurahan yang Tidak ada Sarana Kesehatan menurut Kelurahan/Desa di Kecamatan Kayan Hilir, 2019 <i>The Ease of Access to Nearest Health Facilities for Village/Kelurahan that not Having Health Facilities by Kelurahan/Village by Kelurahan/Village in Kayan Hilir Subdistrict, 2019</i>	29
2.2.4	Banyaknya Warga Penderita Gizi Buruk menurut Kelurahan/Desa di Kecamatan Kayan Hilir, 2018 dan 2019 <i>Number of People with Severe Malnutrition by Kelurahan/Village by Kelurahan/Village in Kayan Hilir Subdistrict, 2018 and 2019</i>	31
2.3	AGAMA DAN SOSIAL LAINNYA RELIGION AND OTHER SOCIAL AFFAIRS	32
2.3.1	Jumlah Penduduk menurut Kelurahan/Desa dan Agama yang Dianut di Kecamatan Kayan Hilir, 2019 <i>Population by Kelurahan/Village and Religion in Kayan Hilir Subdistrict, 2019</i>	32
2.3.2	Jumlah Tempat Ibadah menurut Kelurahan/Desa di Kecamatan Kayan Hilir, 2019 <i>Number of Places of Worship by Kelurahan/Village in Kayan Hilir Subdistrict, 2019</i>	33
2.3.3	Banyaknya Keluarga menurut Kelurahan/Desa ¹ dan Jenis Pengguna Listrik di Kecamatan Kayan Hilir, 2019 <i>Number of Families by Kelurahan/Village¹ and Type of Electric Customer in Kayan Hilir Subdistrict, 2019</i>	34
2.3.4	Banyaknya Desa/Kelurahan menurut Keberadaan Penerangan Jalan Utama Desa/Kelurahan di Kecamatan Kayan Hilir, 2014–2019 <i>Number of Villages/Kelurahan by Presence of Village/Kelurahan Main Street Illumination in Kayan Hilir Subdistrict, 2014–2019</i>	35
2.3.5	Banyaknya Desa/Kelurahan menurut Jenis Bahan Bakar untuk Memasak yang Digunakan oleh Sebagian Besar Keluarga di Kecamatan Kayan Hilir, 2014–2019 <i>Number of Villages/Kelurahan by Type of Cooking Fuel Used by Majority of Families in Kayan Hilir Subdistrict, 2014–2019</i>	36

2.3.6	Banyaknya Desa/Kelurahan menurut Sumber Air Minum Sebagian Besar Keluarga di Kecamatan Kayan Hilir, 2014–2019 <i>Number of Villages/Kelurahan by Sources of Drinking Water of Majority of Families in Kayan Hilir Subdistrict, 2014–2019.....</i>	37
2.3.7	Banyaknya Desa/Kelurahan menurut Penggunaan Fasilitas Tempat Buang Air Besar Sebagian Besar Keluarga di Kecamatan Kayan Hilir, 2014–2019 <i>Number of Villages/Kelurahan by Toilet Facility Usage of Majority of Families in Kayan Hilir Subdistrict, 2014–2019</i>	38
2.3.8	Banyaknya Kejadian Bencana Alam menurut Kelurahan/Desa dan Jenis Bencana Alam di Kecamatan Kayan Hilir, 2019 <i>Number of Natural Disaster by Kelurahan/Village and Type of Natural Disaster in Kayan Hilir Subdistrict, 2019.....</i>	39
2.3.9	Banyaknya Korban Jiwa Akibat Bencana Alam menurut Kelurahan/Desa dan Jenis Bencana Alam di Kecamatan Kayan Hilir, 2019 <i>Number of Casualties due to Natural Disaster by Kelurahan/Village and Type of Natural Disaster in Kayan Hilir Subdistrict, 2019.....</i>	42
2.3.10	Keberadaan Fasilitas/Upaya Antisipasi/Mitigasi Bencana Alam menurut Kelurahan/Desa di Kecamatan Kayan Hilir, 2019 <i>Presence of Facilities/Effort in Anticipation/Mitigation of Natural Disaster by Kelurahan/Village in Kayan Hilir Subdistrict, 2019</i>	45
2.3.11	Banyaknya Embung Desa menurut Kelurahan/Desa di Kecamatan Kayan Hilir, 2018 dan 2019 <i>Number of Village Reservoirs by Kelurahan/Village in Kayan Hilir Subdistrict, 2019.....</i>	47
2.3.12	Banyaknya Desa/Kelurahan yang Memiliki Kelompok Kegiatan Olahraga menurut Jenis Olahraga dan Ketersediaan Fasilitas/Lapangan Olahraga di Kecamatan Kayan Hilir, 2019 <i>Number of Village/Kelurahan Having Sports Activity Group by Type of Sports and Availability of Sports Facility/Field in Kayan Hilir Subdistrict, 2019</i>	48

3.	PENDUDUK DAN KETENAGAKERJAAN/POPULATION AND EMPLOYMENT	49
3.1	HORTIKULTURA	
	<i>HORTICULTURE</i>.....	52
3.1.1	Luas Panen Tanaman Sayuran dan Buah-Buahan Semusim menurut Jenis Tanaman di Kecamatan Kayan Hilir (ha), 2016–2019 <i>Harvested Area of Seasonal Vegetables and Fruits by Kind of Plant in Kayan Hilir Subdistrict (ha), 2016–2019</i>	52
3.1.2	Produksi Tanaman Sayuran dan Buah-Buahan Semusim menurut Jenis Tanaman di Kecamatan Kayan Hilir (kuintal), 2016–2019 <i>Production of Seasonal Vegetables and Fruits by Kind of Plant in Kayan Hilir Subdistrict (quintal), 2016–2019</i>	54
3.1.3	Luas Panen Tanaman Biofarmaka menurut Jenis Tanaman di Kecamatan Kayan Hilir (m ²), 2016–2019 <i>Harvested Area of Medical Plants by Kind of Plant in Kayan Hilir Subdistrict (m²), 2016–2019.....</i>	56
3.1.4	Produksi Tanaman Biofarmaka menurut Jenis Tanaman di Kecamatan Kayan Hilir (kg), 2016–2019 <i>Production of Medical Plants by Kind of Plant in Kayan Hilir Subdistrict (kg), 2016–2019</i>	57
3.1.5	Luas Panen Tanaman Hias menurut Jenis Tanaman di Kecamatan Kayan Hilir (m ²), 2016–2019 <i>Harvested Area of Ornamental Plants by Kind of Plant in Kayan Hilir Subdistrict (m²), 2016–2019.....</i>	58
3.1.6	Produksi Tanaman Hias menurut Jenis Tanaman di Kecamatan Kayan Hilir (tangkai), 2016–2019 <i>Production of Ornamental Plants by Kind of Plant in Kayan Hilir Subdistrict (stalks), 2016–2019.....</i>	59
3.1.7	Produksi Buah-Buahan dan Sayuran Tahunan menurut Jenis Tanaman di Kecamatan Kayan Hilir (ku), 2016–2019 <i>Production of Annual Fruits and Vegetables by Kind of Plant in Kayan Hilir Subdistrict (qu), 2016–2019.....</i>	60

3.2	PERKEBUNAN	
	ESTATE CROPS	62
3.2.1	Luas Areal Tanaman Perkebunan menurut Kelurahan/Desa dan Jenis Tanaman di Kecamatan Kayan Hilir (ha), 2018–2019 <i>Planted Area of Estate Crops by Kelurahan/Village and Kind of Plant in Kayan Hilir Subdistrict (ha), 2018–2019</i>	62
3.2.2	Produksi Tanaman Perkebunan menurut Kelurahan/Desa dan Jenis Tanaman di Kecamatan Kayan Hilir (ku), 2018–2019 <i>Production of Estate Crops by Kelurahan/Village and Kind of Plant in Kayan Hilir Subdistrict (qu), 2018–2019</i>	66
3.3	PETERNAKAN	
	LIVESTOCK	70
3.3.1	Populasi Ternak menurut Kelurahan/Desa dan Jenis Ternak di Kecamatan Kayan Hilir (ekor), 2018–2019 <i>Livestock Population by Kelurahan/Village and Kind of Livestock in Kayan Hilir Subdistrict (heads), 2018–2019</i>	70
3.3.2	Populasi Unggas menurut Kelurahan/Desa dan Jenis Ternak di Kecamatan Kayan Hilir (ekor), 2018–2019 <i>Poultry Population by Kelurahan/Village and Kind of Poultry in Kayan Hilir Subdistrict (heads), 2018–2019</i>	73
4.	SOSIAL DAN KESEJAHTERAAN RAKYAT/SOCIAL AND WELFARE	75
4.1	Banyaknya Sarana dan Prasarana Ekonomi menurut Kelurahan/Desa dan Jenisnya di Kecamatan Kayan Hilir, 2019 <i>Number of Economic Facilities and Infrastructure by Kelurahan/Village in Kayan Hilir Subdistrict, 2019</i>	79
4.3	Banyaknya Sarana Lembaga Keuangan yang Beroperasi menurut Kelurahan/Desa dan Jenisnya di Kecamatan Kayan Hilir, 2019 <i>Number of Operating Financial Institution Facilities by Kelurahan/Village in Kayan Hilir Subdistrict, 2019</i>	82
4.4	Banyaknya Koperasi yang Masih Aktif menurut Kelurahan/Desa dan Jenis Koperasi di Kecamatan Kayan Hilir, 2019 <i>Number of Active Cooperatives by Kelurahan/Village in Kayan Hilir Subdistrict, 2019</i>	83

4.5	Jumlah Menara dan Operator Layanan Komunikasi Telepon Seluler Serta Kondisi Sinyal Telepon Seluler menurut Kelurahan/Desa di Kecamatan Kayan Hilir, 2019 <i>Number of Operating Financial Institution Facilities by Kelurahan/Village in Kayan Hilir Subdistrict, 2019</i>	84
4.6	Sarana Transportasi Antar Desa/Kelurahan menurut Kelurahan/Desa di Kecamatan Kayan Hilir, 2019 <i>Inter-Village/Kelurahan Transportation Facilities by Kelurahan/Village in Kayan Hilir Subdistrict, 2019</i>	85
4.7	Kondisi Jalan Darat Antar Desa/Kelurahan menurut Kelurahan/Desa di Kecamatan Kayan Hilir, 2019 <i>Condition of Inter-Village/Kelurahan Roads by Kelurahan/Village in Kayan Hilir Subdistrict, 2019</i>	86
4.8	Keberadaan Kantor Pos/Pos Pembantu/Rumah Pos dan Perusahaan/Agen Jasa Ekspedisi Swasta menurut Kelurahan/Desa di Kecamatan Kayan Hilir, 2019 <i>Availability of Post Office/Subsidiary of Post Office and Private Expedition Service Company by Kelurahan/Village in Kayan Hilir Subdistrict, 2019</i>	87

DAFTAR GAMBAR/LIST OF FIGURES

	Halaman Page	
1.1	Luas Daerah menurut Kecamatan di Kabupaten Malinau (%), 2019 <i>Area by Subdistrict in Malinau Regency (%), 2019</i>	3
2.1	Jumlah Tenaga Kesehatan menurut Kelurahan/ Desa di Kecamatan Kayan Hilir, 2019 <i>Number of Medical Personnel by Kelurahan/Village in Kayan Hilir Subdistrict, 2019</i>	9
2.2	Jumlah Penduduk menurut Kelurahan/Desa dan Agama yang Dianut di Kecamatan Kayan Hilir, 2019 <i>Population by Kelurahan/Village and Religion in Kayan Hilir Subdistrict, 2019</i>	10
3.1	Produksi Tanaman Biofarmaka menurut Jenis Tanaman di Kecamatan Kayan Hilir (kg), 2016–2019 <i>Production of Medical Plants by Kind of Plant in Kayan Hilir Subdistrict (kg), 2016–2019</i>	51
4.1	Sarana Transportasi Antar Desa/Kelurahan menurut Kelurahan/Desa di Kecamatan Kayan Hilir, 2019 <i>Inter-Village/Kelurahan Transportation Facilities by Kelurahan/Village in Kayan Hilir Subdistrict, 2019</i>	77
4.2	Jumlah Menara dan Operator Layanan Komunikasi Telepon Seluler Serta Kondisi Sinyal Telepon Seluler menurut Kelurahan/Desa di Kecamatan Kayan Hilir, 2019 <i>Number of Operating Financial Institution Facilities by Kelurahan/Village in Kayan Hilir Subdistrict, 2019</i>	78

PENJELASAN UMUM/EXPLANATORY NOTES

Tanda-tanda, satuan-satuan, dan lain-lainnya yang digunakan dalam publikasi ini adalah sebagai berikut:

Symbols, measurement units, and acronyms which are used in this publication, are as follows:

1. TANDA-TANDA/SYMBOLS

Data tidak tersedia/Data not available	: ...
Tidak ada atau nol /Null or zero	: -
Data dapat diabaikan/Data negligible	: 0
Tanda decimal/Decimal point	: ,
Data tidak dapat ditampilkan/Not applicable	: NA
Angka estimasi/Estimated figures	: e
Angka diperbaiki/Revised figures	: r
Angka sementara/Preliminary figures	: x
Angka sangat sementara/Very preliminary figures	: xx
Angka sangat sangat sementara/Very very preliminary figures	: xxx

2. SATUAN/UNITS

barel/barrel	: 158,99 liter/litres = 1/6,2898 m ³
hektar (ha)/hectare (ha)	: 10 000 m ²
kilometer (km)/kilometres (km)	: 1 000 meter/meters (m)
knot/knot	: 1,8523 km/jam (km/hour)
kuintal/quintal	: 100 kg
KWh	: 1 000 Watt hour
MWh	: 1 000 KWh
liter (untuk beras)/litre (for rice)	: 0,80 kg
MMSCF	: 1/35,3 m ³
metrik ton (m.ton)/metric ton (m. ton)	: 0,98421 long ton = 1 000 kg
ons/ounce	: 28,31 gram/grams
ton	: 1 000 kg

Satuan lain: buah, dus, butir, helai/lembar, kaleng, batang, pulsa, ton kilometer (ton-km), jam, menit, persen (%).

Other units: unit, pack, pieces, sheet, tin, pulse, ton-kilometres(ton-km), hour, minute, percent (%).

Perbedaan angka di belakang koma disebabkan oleh pembulatan angka.

The difference in decimal numbers is caused by rounding.

DAFTAR SINGKATAN/ LIST OF ABBREVIATIONS

SI	: Stasiun Iklim
SIMPK	: Stasiun Meteorologi Pertanian Khusus
t.t	: Tempat tidur
BCG	: Bacillus Calmette Guerin
DPT	: Difteri, Pertusis, Tetanus
TT	: Tetanus Toxoid
IOT	: Industri Obat Tradisional/ <i>Traditional Medicine Industry</i>
IKOT	: Industri Kecil Obat Tradisional/ <i>Traditional Medicine Small</i>
Alkes	: Alat kesehatan/ <i>Health Kits</i>
PKRT	: Perbekalan Kesehatan Rumah tangga/ <i>Household Health Logistics</i>
Kompl	: Komplemen/ <i>Complement</i>
IRTP	: Industri Pangan Produksi Rumah Tangga/ <i>Foods Home Industry</i>
PBF	: Pedagang Besar Farmasi/ <i>Pharmacy Whole-seller</i>
GFK	: Gudang Farmasi Kab/Kota/Regency/ <i>Municipality Pharmacy Warehouse</i>
RB	: Rumah Bersalin/ <i>Delivery House</i>
Pustu	: Puskesmas pembantu/ <i>Auxiliary Public Health Center</i>
BP	: Balai Pengobatan/ <i>Polyclinic</i>
TPS	: Tempat Pembuangan Sementara / <i>landfill</i>
Jamkesmas	: Jaminan kesehatan masyarakat miskin/ <i>Poor public health insurance</i>
PJKMU	: Program Jaminan Kesehatan Masyarakat Umum
SIUP	: Surat Ijin Usaha Perdagangan/ <i>Trading Permission Letter</i>
TDP	: Tanda Daftar Perusahaan/ <i>Company Registration Identity</i>
API	: Angka Pengenal Importir/ <i>Importer's Identity Number</i>

<https://malinaukab.bps.go.id>

Statistik Kunci, 2017–2019

Key Statistics, 2017–2019

Rincian/Description	Satuan/Unit	2017	2018	2019
(1)	(2)	(3)	(4)	(5)
SOSIAL/SOCIAL				
Penduduk ¹ /Population ¹	juta/million	261,9	265,0	265,0
Laju Pertumbuhan Penduduk ¹ /Population Growth ¹	%	1,23	1,19	1,19
Angka Harapan Hidup ^{1-e} /Life Expectancy Rate ¹	tahun/years	71,1	71,2	71,2
Angka Melek Huruf Usia 15+/Literacy Rate Aged 15+	%	95,5	95,7	95,7
Tingkat Partisipasi Angkatan Kerja -TPAK ^{2,3} Labour Force Participation Rate-LFPR ^{2,3}	%	66,7	67,3	67,3
Tingkat Pengangguran Terbuka-TPT ² Unemployment Rate-UR ²	%	5,5 ⁴	5,3 ⁴	5,3 ⁴
Penduduk Miskin ⁵ /Poor People ⁴	juta/million	27,8	25,9	25,9
Persentase Penduduk Miskin ⁴ Percentage of Poor People ⁴	%	10,6	9,8	9,8
Indeks Pembangunan Manusia-IPM ⁵ Human Development Index ⁵	—	70,8	71,4	71,4
EKONOMI/ECONOMIC				
Produk Domestik Regional Bruto (PDRB) Harga Berlaku ⁶ Gross Regional Domestic Bruto (GRDP) at Current Price ⁶	triliun rupiah trillion rupiahs	13 587,2 ^x	14 837,4 ^{xx}	14 837,4 ^{xx}
Laju Pertumbuhan Ekonomi ⁸ /Economic Growth ⁷	%	5,1 ^x	5,2 ^{xx}	5,2 ^{xx}
PDRB Per Kapita Harga Berlaku ^{6,8} Per Capita of GRDP at Current Price ^{6,8}	juta rupiah million rupiahs	51,9 ^x	56,0 ^{xx}	56,0 ^{xx}

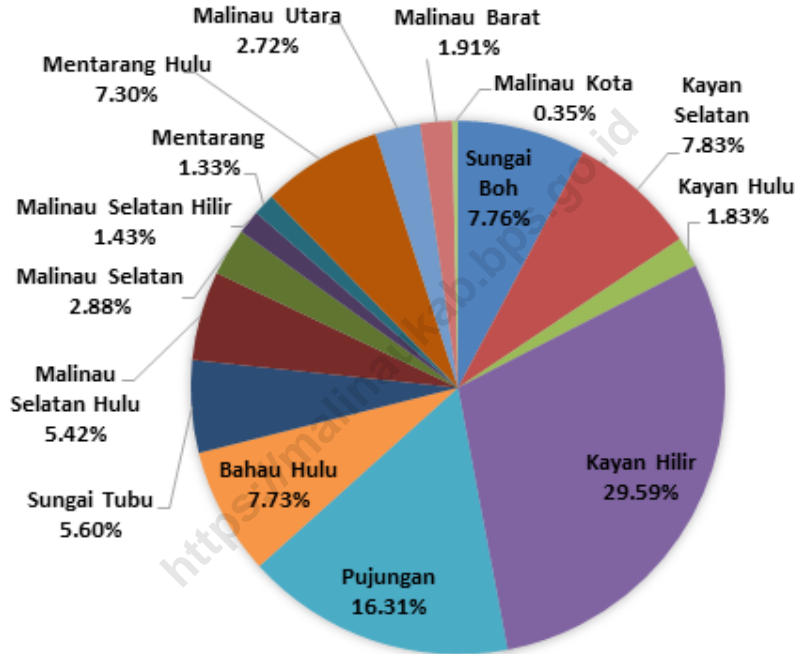
- Catatan/Notes: ¹ Hasil proyeksi penduduk Indonesia 2010–2035 (pertengahan tahun/Juni)/The result of Indonesia population prjection 2010–2035 (mid year/June)
- ² Kondisi Agustus/Condition at August
- ³ Menggunakan penimbang hasil proyeksi penduduk tahun 2010–2035/Weighted by the 2010–2035 population projection
- ⁴ Kondisi Maret/Condition at March
- ⁵ Sejak tahun 2010, IPM dihitung dengan metode baru. Komponen IPM metode baru adalah angka harapan hidup saat lahir, harapan lama sekolah, rata-rata lama sekolah, dan pengeluaran per kapita/Since 2010, HDI was calculated using new method. New HDI component are life expectancy at birth, expected years of schooling, means years of schooling, and expenditure per capita
- ⁶ Mulai tahun 2010 mengadopsi System of National Account 2008 (SNA 2008)/Since 2010 is in line with System of National Account 2008 (SNA 2008)
- ⁷ Menggunakan tahun dasar 2010 (2010=100)/Using 2010 base year (2010=100)
- ⁸ Menggunakan proyeksi penduduk berdasarkan hasil SP2010/Using population projection based on SP2010

01

GEOGRAFI DAN IKLIM
GEOGRAPHY AND CLIMATE



Gambar 1.1 Luas Daerah menurut Kecamatan di Kabupaten Malinau (%) , 2019
Figures 1.1 Area by Subdistrict in Malinau Regency (%) , 2019



Sumber/Source : Badan Perencanaan Pembangunan Daerah Kabupaten Malinau

1.1 KEADAAN GEOGRAFI GEOGRAPHY CONDITION

Tabel
Table 1.1.1 **Luas dan Tinggi Daerah menurut Kecamatan di Kabupaten Malinau, 2019**
Total Area and Height of Region by Subdistrict in Malinau Regency, 2019

Kecamatan/ Subdistrict	Ibukota Kecamatan/ District Capital	Luas ¹ (km ²) Total Area ¹ (square.km)
(1)	(2)	(3)
Sungai Boh	Mahak Baru	3 112,18
Kayan Selatan	Long Ampung	3 138,59
Kayan Hulu	Long Nawang	735,40
Kayan Hilir	Data Dian	11 863,19
Pujungan	Long Pujungan	6 539,39
Bahau Hulu	Long Alango	3 098,98
Sungai Tubu	Long Pada	2 243,78
Malinau Selatan Hulu	Metut	2 171,24
Malinau Selatan	Long Loreh	1 153,35
Malinau Selatan Hilir	Setarap	572,20
Mentarang	Pulau Sapi	535,15
Mentarang Hulu	Long Berang	2 924,65
Malinau Utara	Malinau Seberang	1 091,19
Malinau Barat	Tanjung Lapang	767,12
Malinau Kota	Malinau Kota	142,07
Malinau	Malinau Kota	40 088,48

Lanjutan Tabel/*Continued Table 1.1.1*

Kelurahan/Desa Kelurahan/Village	Persentase terhadap Luas Kecamatan Percentage to Subdistrict's Area
(1)	(2)
Sungai Boh	7,76
Kayan Selatan	7,83
Kayan Hulu	1,83
Kayan Hilir	29,59
Pujungan	16,31
Bahau Hulu	7,73
Sungai Tubu	5,60
Malinau Selatan Hulu	5,42
Malinau Selatan	2,88
Malinau Selatan Hilir	1,43
Mentarang	1,33
Mentarang Hulu	7,30
Malinau Utara	2,72
Malinau Barat	1,91
Malinau Kota	0,35
Malinau	100,00

Lanjutan Tabel/*Continued Table 1.1.1*

Kelurahan/Desa Kelurahan/Village	Tinggi Wilayah (mdpl)/ Regional Height (masl)	Jarak ke Ibukota ¹ (m)/ Distance to Capital ¹ (m)
(1)	(2)	(3)
Sungai Boh	566,20	277,87
Kayan Selatan	744,40	274,26
Kayan Hulu	611,10	273,25
Kayan Hilir	604,20	238,69
Pujungan	267,90	140,78
Bahau Hulu	416,00	111,43
Sungai Tubu	...	76,75
Malinau Selatan Hulu	...	69,27
Malinau Selatan	83,30	45,69
Malinau Selatan Hilir	...	21,80
Mentarang	63,00	12,20
Mentarang Hulu	423,70	56,64
Malinau Utara	59,70	4,94
Malinau Barat	63,20	4,42
Malinau Kota	62,00	-
Malinau	62,00	-

Catatan/Note:
Sumber/Source:

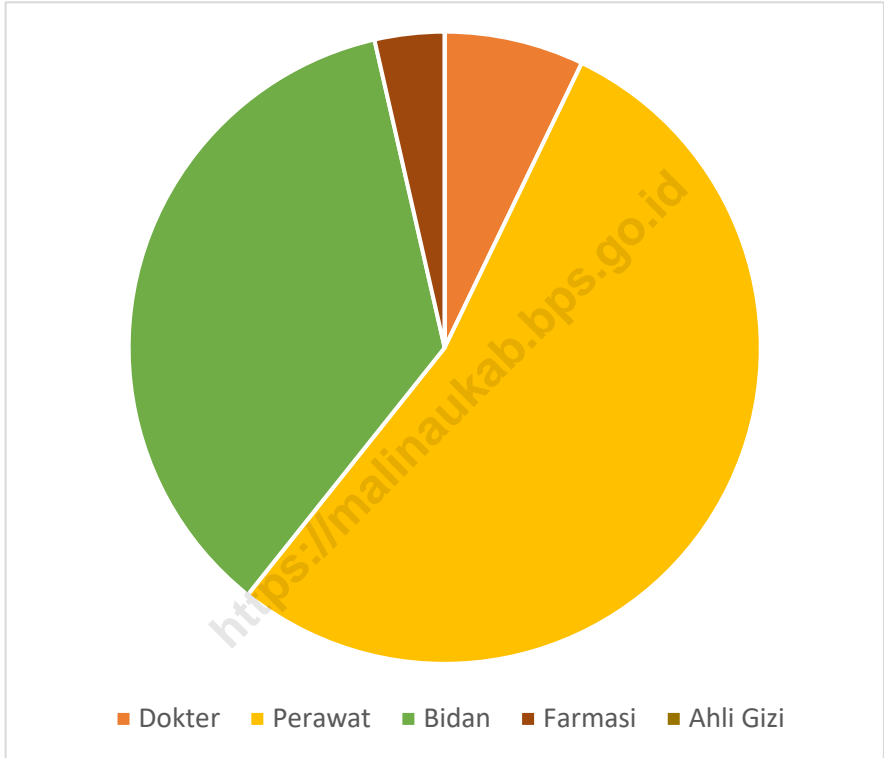
¹ Perhitungan jarak garis lurus dari alun-alun Kantor Pemerintahan Kabupaten Malinau
Badan Perencanaan Pembangunan Daerah dan Litbang Kabupaten Malinau

02

SOSIAL DAN KESEJAHTERAAN RAKYAT
SOCIAL AND WELFARE

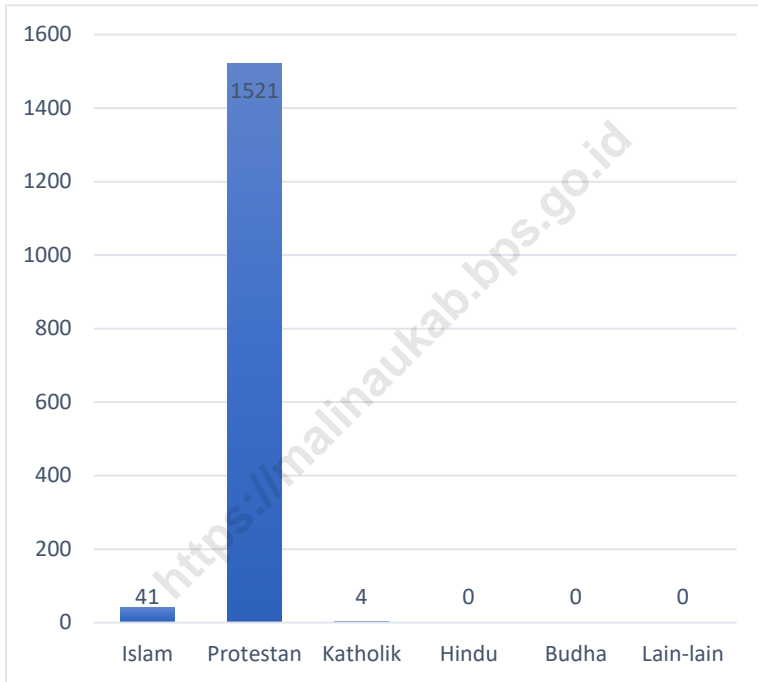


Gambar 2.1 Jumlah Tenaga Kesehatan menurut Kelurahan/Desa di Kecamatan Kayan Hilir, 2019
Figures *Number of Medical Personnel by Kelurahan/Village in Kayan Hilir Subdistrict, 2019*



Sumber/Source: Dinas Kesehatan, Pengendalian Penduduk, dan Keluarga Berencana Kabupaten Malinau

Gambar 2.2 Jumlah Penduduk menurut Kelurahan/Desa dan Agama yang Dianut di Kecamatan Kayan Hilir, 2019
Figures 2.2 Population by Kelurahan/Village and Religion in Kayan Hilir Subdistrict, 2019



Sumber/Source: Kementerian Agama Kabupaten Malinau/ Ministry of Religious Affairs of Malinau Regency

2.1 PENDIDIKAN EDUCATION

Tabel
Table 2.1.1 **Jumlah Desa/Kelurahan yang Memiliki Fasilitas Sekolah menurut Kelurahan/Desa di Kecamatan Kayan Hilir, 2014–2019**
Number of Villages¹/Kelurahan Having Educational Facilities by Kelurahan/Village in Kayan Hilir Subdistrict, 2014–2019

Kelurahan/Desa Kelurahan/Village	SD Primary School		
	2014	2018	2019
(1)	(2)	(3)	(4)
Metun	0	0	0
Sungai Anai	1	1	1
Long Pipa	1	1	1
Long Sule	0	0	0
Data Dian	1	1	1
Kayan Hilir	3	3	3

Lanjutan Tabel/Continued Table 2.1.1

Kelurahan/Desa Kelurahan/Village	SMP Junior High School		
	2014	2018	2019
(1)	(2)	(3)	(4)
Metun	1	1	1
Sungai Anai	-	-	-
Long Pipa	-	-	-
Long Sule	-	-	-
Data Dian	1	1	1
Kayan Hilir	2	2	2

Lanjutan Tabel/*Continued Table 2.1.1*

Kelurahan/Desa <i>Kelurahan/Village</i>	SMA <i>Senior High School</i>		
	2014	2018	2019
(1)	(2)	(3)	(4)
Metun	1	1	1
Sungai Anai	-	-	-
Long Pipa	-	-	-
Long Sule	-	-	-
Data Dian	-	-	-
Kayan Hilir	1	1	1

Lanjutan Tabel/Continued Table 2.1.1

Kelurahan/Desa Kelurahan/Village	SMK Vocational School		
	2014	2018	2019
(1)	(2)	(3)	(4)
Metun	-	-	-
Sungai Anai	-	-	-
Long Pipa	-	-	-
Long Sule	-	-	-
Data Dian	-	-	-
Kayan Hilir	-	-	-

Lanjutan Tabel/*Continued Table 2.1.1*

Kelurahan/Desa Kelurahan/Village	Perguruan Tinggi University		
	2014	2018	2019
(1)	(2)	(3)	(4)
Metun	-	-	-
Sungai Anai	-	-	-
Long Pipa	-	-	-
Long Sule	-	-	-
Data Dian	-	-	-
Kayan Hilir	-	-	-

Sumber/Source: BPS, Pendataan Potensi Desa (Podes)/ BPS—Statistics Indonesia, Village Potential Data Collection

Tabel 2.1.2 Banyaknya Sekolah Dasar (SD) menurut Kelurahan/Desa di Kecamatan Kayan Hilir, 2019
Table *Number of Primary Schools by Kelurahan/Village in Kayan Hilir Subdistrict, 2019*

Kelurahan/Desa Kelurahan/Village	Negeri Public	Swasta Private	Jumlah Total
(1)	(2)	(3)	(4)
Metun	-	-	-
Sungai Anai	1	-	1
Long Pipa	1	-	1
Long Sule	-	1	1
Data Dian	1	-	1
Kayan Hilir	3	1	4

Sumber/Source: BPS, Pendataan Potensi Desa (Podes) 2019/ BPS–Statistics Indonesia, Village Potential Data Collection 2019

Tabel 2.1.3 Banyaknya Madrasah Ibtidaiyah (MI) menurut Kelurahan/Desa di Kecamatan Kayan Hilir, 2019
Table *Number of Madrasah Ibtidaiyah (MI) by Kelurahan/Village in Kayan Hilir Subdistrict, 2019*

Kelurahan/Desa Kelurahan/Village	Negeri Public	Swasta Private	Jumlah Total
(1)	(2)	(3)	(4)
Metun	-	-	-
Sungai Anai	-	-	-
Long Pipa	-	-	-
Long Sule	-	-	-
Data Dian	-	-	-
Kayan Hilir	-	-	-

Sumber/Source: BPS, Pendataan Potensi Desa (Podes) 2019/ BPS–Statistics Indonesia, Village Potential Data Collection 2019

Tabel 2.1.4 Banyaknya Sekolah Menengah Pertama (SMP) menurut Kelurahan/Desa di Kecamatan Kayan Hilir, 2019
Table *Number of Junior High Schools by Kelurahan/Village in Kayan Hilir Subdistrict, 2019*

Kelurahan/Desa Kelurahan/Village	Negeri Public	Swasta Private	Jumlah Total
(1)	(2)	(3)	(4)
Metun	-	-	-
Sungai Anai	-	-	-
Long Pipa	-	-	-
Long Sule	1	-	1
Data Dian	1	-	1
Kayan Hilir	2	-	2

Sumber/Source: BPS, Pendataan Potensi Desa (Podes) 2019/ BPS–Statistics Indonesia, Village Potential Data Collection 2019

Tabel 2.1.5 Banyaknya Madrasah Tsanawiyah (MTs) menurut Kelurahan/Desa di Kecamatan Kayan Hilir, 2019
Number of Madrasah Tsanawiyah (MTs) by Kelurahan/Village in Kayan Hilir Subdistrict, 2019

Kelurahan/Desa Kelurahan/Village	Negeri Public	Swasta Private	Jumlah Total
(1)	(2)	(3)	(4)
Metun	-	-	-
Sungai Anai	-	-	-
Long Pipa	-	-	-
Long Sule	-	-	-
Data Dian	-	-	-
Kayan Hilir	-	-	-

Sumber/Source: BPS, Pendataan Potensi Desa (Podes) 2019/ BPS–Statistics Indonesia, Village Potential Data Collection 2019

Tabel 2.1.6 Banyaknya Sekolah Menengah Atas (SMA) menurut Kelurahan/Desa di Kecamatan Kayan Hilir, 2019
Table *Number of Senior High Schools by Kelurahan/Village in Kayan Hilir Subdistrict, 2019*

Kelurahan/Desa Kelurahan/Village	Negeri Public	Swasta Private	Jumlah Total
(1)	(2)	(3)	(4)
Metun	-	-	-
Sungai Anai	-	-	-
Long Pipa	1	-	1
Long Sule	1	-	1
Data Dian	-	-	-
Kayan Hilir	2	-	2

Sumber/Source: BPS, Pendataan Potensi Desa (Podes) 2019/ BPS–Statistics Indonesia, Village Potential Data Collection 2019

Tabel 2.1.7 Banyaknya Madrasah Aliyah (MA) menurut Kelurahan/Desa di Kecamatan Kayan Hilir, 2019
Number of Madrasah Aliyah (MA) by Kelurahan/Village in Kayan Hilir Subdistrict, 2019

Kelurahan/Desa Kelurahan/Village	Negeri Public	Swasta Private	Jumlah Total
(1)	(2)	(3)	(4)
Metun	-	-	-
Sungai Anai	-	-	-
Long Pipa	-	-	-
Long Sule	-	-	-
Data Dian	-	-	-
Kayan Hilir	-	-	-

Sumber/Source: BPS, Pendataan Potensi Desa (Podes) 2019/ BPS–Statistics Indonesia, Village Potential Data Collection 2019

Tabel 2.1.8 Banyaknya Sekolah Menengah Kejuruan (SMK) menurut Kelurahan/Desa di Kecamatan Kayan Hilir, 2019
Number of Vocational High Schools by Kelurahan/Village in Kayan Hilir Subdistrict, 2019

Kelurahan/Desa Kelurahan/Village	Negeri Public	Swasta Private	Jumlah Total
(1)	(2)	(3)	(4)
Metun	-	-	-
Sungai Anai	-	-	-
Long Pipa	-	-	-
Long Sule	-	-	-
Data Dian	-	-	-
Kayan Hilir	-	-	-

Sumber/Source: BPS, Pendataan Potensi Desa (Podes) 2019/ BPS–Statistics Indonesia, Village Potential Data Collection 2019

Tabel 2.1.9 Banyaknya Akademi/Perguruan Tinggi menurut Kelurahan/Desa di Kecamatan Kayan Hilir, 2019
Number of Universities by Kelurahan/Village in Kayan Hilir Subdistrict, 2019

Kelurahan/Desa Kelurahan/Village	Negeri Public	Swasta Private	Jumlah Total
(1)	(2)	(3)	(4)
Metun	-	-	-
Sungai Anai	-	-	-
Long Pipa	-	-	-
Long Sule	-	-	-
Data Dian	-	-	-
Kayan Hilir	-	-	-

Sumber/Source: BPS, Pendataan Potensi Desa (Podes) 2019/ BPS—Statistics Indonesia, Village Potential Data Collection 2019

Tabel 2.1.10 Kemudahan Untuk Mencapai Sarana Pendidikan Terdekat Bagi Desa/Kelurahan yang Tidak ada Sarana Pendidikan menurut Kelurahan/Desa di Kecamatan Kayan Hilir, 2019
The Ease of Access to Nearest Educational Facilities for Village/ Kelurahan that not Having Educational Facilities by Kelurahan/ Village in Kayan Hilir Subdistrict, 2019

Kelurahan/Desa Kelurahan/Village	SD Primary School	MI Madrasah Ibtidaiyah	SMP Junior High School	MTs Madrasah Tsanawiyah
(1)	(2)	(3)	(4)	(5)
Metun	2	3	3	3
Sungai Anai	-	3	3	3
Long Pipa	-	4	1	4
Long Sule	-	4	-	3
Data Dian	-	3	-	3

Lanjutan Tabel/*Continued Table 2.1.10*

Kelurahan/Desa Kelurahan/Village	SMA Senior High School	MA Madrasah Aliyah	SMK Vocational High School	Akademi/ PT University
(1)	(6)	(7)	(8)	(9)
Metun	3	3	3	3
Sungai Anai	3	3	3	3
Long Pipa	2	4	4	4
Long Sule	1	4	4	4
Data Dian	-	3	3	3

Catatan/Note: Isian berupa kode sebagai perwakilan tingkat kemudahan untuk mencapai fasilitas tersebut. Kode 1 - sangat mudah; kode 2 - mudah; kode 3 - sulit; dan kode 4 - sangat sulit.

Sumber/Source: BPS, Pendataan Potensi Desa (Podes) 2019/ BPS—Statistics Indonesia, Village Potential Data Collection 2019

2.2 KESEHATAN HEALTH

Tabel 2.2.1 **Banyaknya Sarana Kesehatan menurut Kelurahan/Desa dan Jenis Sarana Kesehatan di Kecamatan Kayan Hilir, 2019**
Table **Number of Health Facilities by Kelurahan/Village and Kind of Health Facilities in Kayan Hilir Subdistrict, 2019**

Kelurahan/Desa Kelurahan/Village	Rumah Sakit Hospital	Rumah Sakit Bersalin Maternity Hospital	Klinik/Balai Kesehatan Clinic/Health Center
(1)	(2)	(3)	(4)
Metun	-	-	-
Sungai Anai	-	-	-
Long Pipa	-	-	-
Long Sule	-	-	-
Data Dian	-	-	-
Kayan Hilir	-	-	-

Lanjutan Tabel/*Continued Table 2.2.1*

Kelurahan/Desa <i>Kelurahan/Village</i>	Puskesmas <i>Public Health Center</i>		Apotek <i>Pharmacy</i>
	Rawat Inap <i>With Hospitalization</i>	Tanpa Rawat Inap <i>Without Hospitalization</i>	
(1)	(5)	(6)	(7)
Metun	1	-	-
Sungai Anai	-	-	-
Long Pipa	-	-	-
Long Sule	-	-	-
Data Dian	-	-	-
Kayan Hilir	1	-	-

Sumber/Source: BPS, Pendataan Potensi Desa (Podes) 2019/ *BPS-Statistics Indonesia, Village Potential Data Collection 2019*

Tabel 2.2.2 Jumlah Tenaga Kesehatan menurut Kelurahan/Desa di Kecamatan Kayan Hilir, 2019
Number of Medical Personnel by Kelurahan/Village in Kayan Hilir Subdistrict, 2019

Kelurahan/Desa Kelurahan/Village	Dokter Doctor	Perawat Nurse	Bidan Midwife	Farmasi Pharma- ceutical	Ahli Gizi Nutritionist
(1)	(2)	(3)	(4)	(5)	(6)
Metun	-	-	-	-	-
Sungai Anai	-	-	-	-	-
Long Pipa	-	-	-	-	-
Long Sule	-	-	-	-	-
Data Dian	-	-	-	-	-
Kayan Hilir	2	15	10	1	-

Sumber/Source: Dinas Kesehatan, Pengendalian Penduduk, dan Keluarga Berencana Kabupaten Malinau

Tabel 2.2.3 Kemudahan Mencapai Sarana Kesehatan Terdekat Bagi Desa/Kelurahan yang Tidak ada Sarana Kesehatan menurut Kelurahan/Desa di Kecamatan Kayan Hilir, 2019
The Ease of Access to Nearest Health Facilities for Village/Kelurahan that not Having Health Facilities by Kelurahan/Village by Kelurahan/Village in Kayan Hilir Subdistrict, 2019

Kelurahan/Desa Kelurahan/Village	Rumah Sakit Hospital	Rumah Sakit Bersalin Maternity Hospital	Klinik/Balai Kesehatan Clinic/Health Center
(1)	(2)	(3)	(4)
Metun	3	3	3
Sungai Anai	3	3	3
Long Pipa	4	4	4
Long Sule	4	4	4
Data Dian	3	3	3

Lanjutan Tabel/Continued Table 2.2.3

Kelurahan/Desa Kelurahan/Village	Puskesmas Public Health Center		Apotek Pharmacy
	Rawat Inap With Hospitalization	Tanpa Rawat Inap Without Hospitalization	
(1)	(5)	(6)	(7)
Metun	3	3	3
Sungai Anai	3	3	3
Long Pipa	1	4	4
Long Sule	-	4	4
Data Dian	-	3	3

Catatan/Note: Isian berupa kode sebagai perwakilan tingkat kemudahan untuk mencapai fasilitas tersebut. Kode 1 - sangat mudah; kode 2 - mudah; kode 3 - sulit; dan kode 4 - sangat sulit.

Sumber/Source: BPS, Pendataan Potensi Desa (Podes) 2019/ BPS-Statistics Indonesia, Village Potential Data Collection 2019

Tabel 2.2.4 Banyaknya Warga Penderita Gizi Buruk menurut Kelurahan/Desa di Kecamatan Kayan Hilir, 2018 dan 2019
Number of People with Severe Malnutrition by Kelurahan/Village by Kelurahan/Village in Kayan Hilir Subdistrict, 2018 and 2019

Kelurahan/Desa Kelurahan/Village	2018	2019
(1)	(2)	(3)
Metun	-	-
Sungai Anai	-	-
Long Pipa	-	-
Long Sule	-	-
Data Dian	-	-
Kayan Hilir	-	-

Sumber/Source: BPS, Pendataan Potensi Desa (Podes) 2018 dan 2019/BPS–Statistics Indonesia, Village Potential Data Collection 2018 and 2019

2.3 Agama dan Sosial Lainnya *Religion and Other Social Affairs*

Tabel 2.3.1 **Jumlah Penduduk menurut Kelurahan/Desa dan Agama yang Dianut di Kecamatan Kayan Hilir, 2019**
Population by Kelurahan/Village and Religion in Kayan Hilir Subdistrict, 2019

Kelurahan/Desa <i>Kelurahan/Village</i>	Islam	Protestan <i>Protestant</i>	Katolik <i>Catholic</i>	Hindu	Budha <i>Buddha</i>	Lainnya <i>Others</i>
(1)	(2)	(3)	(4)	(5)	(6)	(7)
Metun	-	-	-	-	-	-
Sungai Anai	-	-	-	-	-	-
Long Pipa	-	-	-	-	-	-
Long Sule	-	-	-	-	-	-
Data Dian	-	-	-	-	-	-
Kayan Hilir	41	1 521	4	-	-	-

Sumber/*Source*: Kementerian Agama Kabupaten Malinau/ Ministry of Religious Affairs of Malinau Regency

Tabel 2.3.2 Jumlah Tempat Ibadah menurut Kelurahan/Desa di Kecamatan Kayan Hilir, 2019
Number of Places of Worship by Kelurahan/Village in Kayan Hilir Subdistrict, 2019

Kelurahan/Desa Kelurahan/Village	Masjid Mosque	Mushola Pray Room	Gereja Protestan Protestant Church	Gereja Katholik Catholic Church	Pura Temple	Vihara
(1)	(2)	(3)	(4)	(5)	(6)	(7)
Metun	-	-	-	-	-	-
Sungai Anai	-	-	-	-	-	-
Long Pipa	-	-	-	-	-	-
Long Sule	-	-	-	-	-	-
Data Dian	-	-	-	-	-	-
Kayan Hilir	1	-	6	-	-	-

Sumber/Source: BPS, Pendataan Potensi Desa (Podes) 2019/ BPS—Statistics Indonesia, Village Potential Data Collection 2019

Tabel 2.3.3 Banyaknya Keluarga menurut Kelurahan/Desa¹ dan Jenis Pengguna Listrik di Kecamatan Kayan Hilir, 2019
Number of Families by Kelurahan/Village¹ and Type of Electric Customer in Kayan Hilir Subdistrict, 2019

Kelurahan/Desa Kelurahan/Village	Pengguna Listrik/Electric Customer			Bukan Pengguna Listrik Non Electricity Consuming Family
	PLN State Electricity Company	Non PLN Non-State Electricity Company	Jumlah Total	
(1)	(2)	(3)	(4)	(5)
Metun	-	30	30	-
Sungai Anai	-	40	40	-
Long Pipa	-	120	120	-
Long Sule	-	135	135	-
Data Dian	-	114	114	-
Kayan Hilir	-	439	439	-

Sumber/Source: BPS, Pendataan Potensi Desa (Podes) 2019/BPS–Statistics Indonesia, Village Potential Data Collection 2019

Tabel 2.3.4 Banyaknya Desa/Kelurahan menurut Keberadaan Penerangan Jalan Utama Desa/Kelurahan di Kecamatan Kayan Hilir, 2014–2019
Number of Villages/Kelurahan by Presence of Village/Kelurahan Main Street Illumination in Kayan Hilir Subdistrict, 2014–2019

Penerangan Jalan Utama <i>Main Street Illumination</i>	2014	2018	2019
(1)	(2)	(3)	(4)
Sumber Penerangan Jalan Utama <i>The Source of Main Street Illumination</i>			
Listrik Pemerintah/ <i>State Electricity</i>	-	-	-
Listrik Non Pemerintah/ <i>Non-State Electricity</i>	-	-	439
Non Listrik/ <i>Non Electric</i>	-	-	-

Sumber/Source: BPS, Pendataan Potensi Desa (Podes) 2014, 2018, dan 2019/ BPS–Statistics Indonesia, Village Potential Data Collection 2014, 2018, and 2019

Tabel 2.3.5 Banyaknya Desa/Kelurahan menurut Jenis Bahan Bakar untuk Memasak yang Digunakan oleh Sebagian Besar Keluarga di Kecamatan Kayan Hilir, 2014–2019
Number of Villages/Kelurahan by Type of Cooking Fuel Used by Majority of Families in Kayan Hilir Subdistrict, 2014–2019

Jenis Bahan Bakar <i>Type of Cooking Fuel</i>	2014	2018	2019
(1)	(2)	(3)	(4)
Gas Kota/ <i>City Gas</i>	-	-	-
LPG 3 Kg/ <i>3 Kg-LPG</i>	-	-	-
LPG lebih dari 3 Kg/ <i>More than 3 Kg-LPG</i>	-	-	-
Minyak Tanah/ <i>Kerosene</i>	-	-	-
Kayu Bakar/ <i>Firewood</i>	5	5	5
Lainnya/ <i>Others</i>	-	-	-

Sumber/Source: BPS, Pendataan Potensi Desa (Podes) 2014, 2018, dan 2019/ *BPS–Statistics Indonesia, Village Potential Data Collection 2014, 2018, and 2019*

Tabel 2.3.6 Banyaknya Desa/Kelurahan menurut Sumber Air Minum Sebagian Besar Keluarga di Kecamatan Kayan Hilir, 2014–2019
Number of Villages/Kelurahan by Sources of Drinking Water of Majority of Families in Kayan Hilir Subdistrict, 2014–2019

Sumber Air Minum <i>Sources of Drinking Water</i>	2014	2018	2019
(1)	(2)	(3)	(4)
Air Kemasan Bermerk/ <i>Branded Bottled Water</i>	-	-	-
Air Isi Ulang/ <i>Refill Water</i>	-	-	-
Ledeng dengan Meteran/ <i>Bottled Water/Tap Water</i>	-	-	-
Ledeng tanpa Meteran/ <i>Electric/ Hand Pump</i>	-	-	-
Sumur Bor atau Pompa/ <i>Borehole/ Tube Well</i>	-	-	-
Sumur/ <i>Well</i>	-	-	-
Mata Air/ <i>Spring</i>	-	-	-
Sungai/Danau/Kolam/ Waduk/Situ/Embung/Bendungan <i>River/ Lake/ Pool/ Reservoir/ Dam</i>	5	5	5
Air Hujan/ <i>Rain-water</i>	-	-	-
Lainnya/ <i>Others</i>	-	-	-

Sumber/Source: BPS, Pendataan Potensi Desa (Podes) 2014, 2018, dan 2019/ BPS–Statistics Indonesia, Village Potential Data Collection 2014, 2018, and 2019

Tabel 2.3.7 Banyaknya Desa/Kelurahan menurut Penggunaan Fasilitas Tempat Buang Air Besar Sebagian Besar Keluarga di Kecamatan Kayan Hilir, 2014–2019
Number of Villages/Kelurahan by Toilet Facility Usage of Majority of Families in Kayan Hilir Subdistrict, 2014–2019

Fasilitas Tempat Buang Air Besar <i>Toilet Facility</i>	2014	2018	2019
(1)	(2)	(3)	(4)
Jamban/ Toilet			
Sendiri/ <i>Private</i>	...	5	5
Bersama/ <i>Shared</i>	...	-	-
Umum/ <i>Public</i>	...	-	-
Bukan Jamban/ Non-Toilet	...	-	-

Sumber/Source: BPS, Pendataan Potensi Desa (Podes) 2014, 2018, dan 2019/ BPS–Statistics Indonesia, Village Potential Data Collection 2014, 2018, and 2019

Tabel 2.3.8 Banyaknya Kejadian Bencana Alam menurut Kelurahan/Desa dan Jenis Bencana Alam di Kecamatan Kayan Hilir, 2019
Number of Natural Disaster by Kelurahan/Village and Type of Natural Disaster in Kayan Hilir Subdistrict, 2019

Kelurahan/Desa Kelurahan/Village	Gempa Bumi Earth-quake	Tsunami Tsunami	Gunung Meletus Volcanic Eruption	Tanah Longsor Landslide
(1)	(2)	(3)	(4)	(5)
Metun	-	-	-	-
Sungai Anai	-	-	-	-
Long Pipa	-	-	-	-
Long Sule	-	-	-	-
Data Dian	-	-	-	-
Kayan Hilir	-	-	-	-

Lanjutan Tabel/*Continued Table 2.3.8*

Kelurahan/Desa Kelurahan/Village	Banjir Flood	Banjir Bandang Flash Flood	Kekeringan Drought
(1)	(6)	(7)	(8)
Metun	-	-	-
Sungai Anai	-	-	-
Long Pipa	-	-	-
Long Sule	-	-	-
Data Dian	-	-	-
Kayan Hilir	-	-	-

Lanjutan Tabel/*Continued Table 2.3.8*

Kelurahan/Desa <i>Kelurahan/Village</i>	Kebakaran Hutan dan Lahan <i>Forest and Land Fires</i>	Angin Puyuh/Puting Beliung/Topan <i>Typhoon/Cyclone</i>	Gelombang Pasang Laut <i>Tide</i>
(1)	(9)	(10)	(11)
Metun	-	-	-
Sungai Anai	-	-	-
Long Pipa	-	-	-
Long Sule	-	-	-
Data Dian	-	-	-
Kayan Hilir	-	-	-

Sumber/*Source*: BPS, Pendataan Potensi Desa (Podes) 2019/*BPS—Statistics Indonesia, Village Potential Data Collection 2019*

Tabel 2.3.9 Banyaknya Korban Jiwa Akibat Bencana Alam menurut Kelurahan/Desa dan Jenis Bencana Alam di Kecamatan Kayan Hilir, 2019
Number of Casualties due to Natural Disaster by Kelurahan/Village and Type of Natural Disaster in Kayan Hilir Subdistrict, 2019

Kelurahan/Desa Kelurahan/Village	Gempa Bumi Earth-quake	Tsunami Tsunami	Gunung Meletus Volcanic Eruption	Tanah Longsor Landslide
(1)	(2)	(3)	(4)	(5)
Metun	-	-	-	-
Sungai Anai	-	-	-	-
Long Pipa	-	-	-	-
Long Sule	-	-	-	-
Data Dian	-	-	-	-
Kayan Hilir	-	-	-	-

Lanjutan Tabel/*Continued Table 2.3.9*

Kelurahan/Desa Kelurahan/Village	Banjir Flood	Banjir Bandang Flash Flood	Kekeringan Drought
(1)	(6)	(7)	(8)
Metun	-	-	-
Sungai Anai	-	-	-
Long Pipa	-	-	-
Long Sule	-	-	-
Data Dian	-	-	-
Kayan Hilir	-	-	-

Lanjutan Tabel/Continued Table 2.3.9

Kelurahan/Desa Kelurahan/Village	Kebakaran Hutan dan Lahan Forest and Land Fires	Angin Puyuh/Puting Beliung/Topan Typhoon/Cyclone	Gelombang Pasang Laut Tide
(1)	(9)	(10)	(11)
Metun	-	-	-
Sungai Anai	-	-	-
Long Pipa	-	-	-
Long Sule	-	-	-
Data Dian	-	-	-
Kayan Hilir	-	-	-

Sumber/Source: BPS, Pendataan Potensi Desa (Podes) 2019/ BPS—Statistics Indonesia, Village Potential Data Collection 2019

Tabel 2.3.10 Keberadaan Fasilitas/Upaya Antisipasi/Mitigasi Bencana Alam menurut Kelurahan/Desa di Kecamatan Kayan Hilir, 2019
Table *Presence of Facilities/Effort in Anticipation/Mitigation of Natural Disaster by Kelurahan/Village in Kayan Hilir Subdistrict, 2019*

Kelurahan/Desa Kelurahan/Village	Sistem Peringatan Dini Bencana Alam Natural Disaster Early Warning System	Sistem Peringatan Dini Khusus Tsunami Tsunami Early Warning System	Perlengkapan Keselamatan Safety Equipment
(1)	(2)	(3)	(4)
Metun	-	-	-
Sungai Anai	-	-	-
Long Pipa	-	-	-
Long Sule	-	-	-
Data Dian	-	-	-

Lanjutan Tabel/Continued Table 2.3.10

Kelurahan/Desa Kelurahan/Village	Rambu-rambu dan Jalur Evakuasi Bencana Sign and Evacuation Route	Pembuatan, Perawatan, atau Normalisasi: Sungai, Kanal, Tanggul, Parit, Drainase, Waduk, Pantai, dll Engineering, Maintenance, or Normalization: Rivers, Canals, Dikes, ect
(1)	(5)	(6)
Metun	-	-
Sungai Anai	-	-
Long Pipa	-	-
Long Sule	-	-
Data Dian	-	-

Sumber/Source: BPS, Pendataan Potensi Desa (Podes) 2019/ BPS–Statistics Indonesia, Village Potential Data Collection 2019

Tabel 2.3.11 Banyaknya Embung Desa menurut Kelurahan/Desa di Kecamatan Kayan Hilir, 2018 dan 2019
Number of Village Reservoirs by Kelurahan/Village in Kayan Hilir Subdistrict, 2019

Kelurahan/Desa Kelurahan/Village	2018	2019
(1)	(2)	(3)
Metun	-	-
Sungai Anai	-	-
Long Pipa	-	-
Long Sule	-	-
Data Dian	-	-
Kayan Hilir	-	-

Sumber/Source: BPS, Pendataan Potensi Desa (Podes) 2019/ BPS—Statistics Indonesia, Village Potential Data Collection 2019

Tabel 2.3.12 Banyaknya Desa/Kelurahan yang Memiliki Kelompok Kegiatan Olahraga menurut Jenis Olahraga dan Ketersediaan Fasilitas/Lapangan Olahraga di Kecamatan Kayan Hilir, 2019
Number of Village/Kelurahan Having Sports Activity Group by Type of Sports and Availability of Sports Facility/Field in Kayan Hilir Subdistrict, 2019

Jenis Olahraga Type of Sports	Kondisi Fasilitas/Lapangan Olahraga Sports Facility/Field Condition			Tidak Ada Fasilitas/ Lapangan Olahraga No Sports Facility/Field
	Baik Good	Rusak Sedang Moderately Damaged	Rusak Parah Badly Damaged	
(1)	(2)	(3)	(4)	(5)
Sepak Bola/ Soccer	3	-	1	1
Bola Voli/ Volley Ball	4	-	1	-
Bulu Tangkis/ Badminton	5	1	-	-
Bola Basket/ Basket Ball	-	-	-	5
Tenis Lapangan/ Court Tennis	-	-	-	5
Tenis Meja/ Table Tennis	2	-	-	3
Futsal/ Futsal	1	-	-	4
Renang/ Swimming Pool	-	-	-	5
Bela Diri (Pencak Silat, Karate, dll) Martial Arts (Pencak Silat, Karate, etc)	-	-	-	5
Bilyard/ Bilyards	-	-	-	5
Pusat Kebugaran (Senam, Fitness, Aerobik, dll) Fitness Center (Gymnastics, Fitness, Aerobics, etc)	-	-	-	5
Lainnya/ Others	-	-	-	5
Sepak takraw/kick volleyball	-	-	-	5

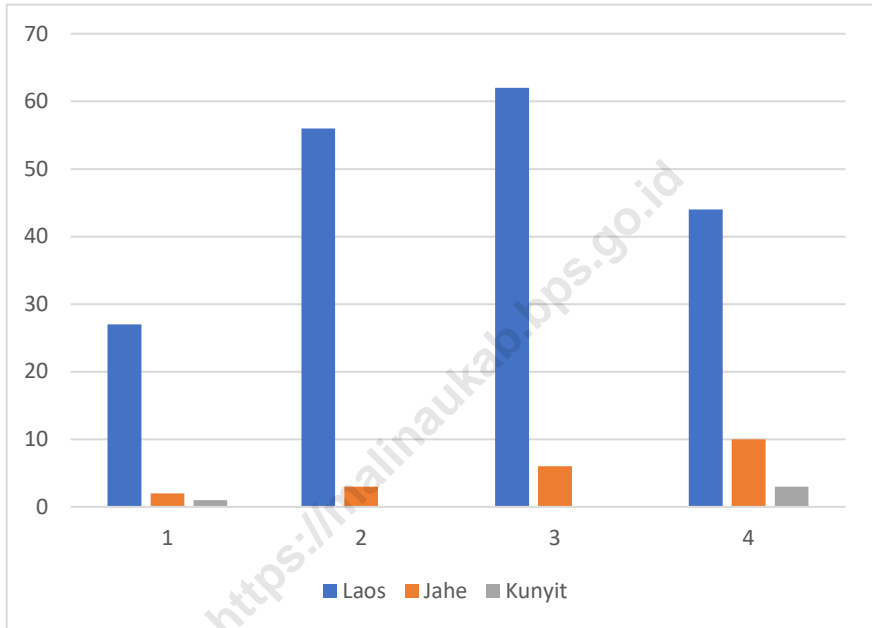
Sumber/Source: BPS, Pendataan Potensi Desa (Podes) 2019/ BPS–Statistics Indonesia, Village Potential Data Collection 2019

03

PERTANIAN, KEHUTANAN, PETERNAKAN, DAN PERIKANAN **AGRICULTURE, FORESTRY, LIVESTOCK, AND FISHERY**



Gambar 3.1 **Produksi Tanaman Biofarmaka menurut Jenis Tanaman di Kecamatan Kayan Hilir (kg), 2016–2019**
Figures 3.1 **Production of Medical Plants by Kind of Plant in Kayan Hilir Subdistrict (kg), 2016–2019**



Sumber/Source: BPS, Statistik Pertanian Hortikultura SPH-TBF/BPS-Statistics Indonesia, Agricultural Statistics for Horticulture, SPH-TBF

3.1 HORTIKULTURA
HORTICULTURE

Tabel 3.1.1 Luas Panen Tanaman Sayuran dan Buah-Buahan Semusim menurut Jenis Tanaman di Kecamatan Kayan Hilir (ha), 2016–2019
Harvested Area of Seasonal Vegetables and Fruits by Kind of Plant in Kayan Hilir Subdistrict (ha), 2016–2019

Jenis Tanaman <i>Kind of Plants</i>	2016	2017	2018	2019
(1)	(2)	(3)	(4)	(5)
Sayuran/ Vegetables				
Bawang Daun/ <i>Wlech Onion</i>	-	-	-	-
Bawang Merah/ <i>Shallot</i>	-	-	-	-
Bawang Putih/ <i>Garlic</i>	-	-	-	-
Bayam/ <i>Spinach</i>	-	-	1	-
Buncis/ <i>Green Bean</i>	-	-	-	-
Cabai Besar/ <i>Chili (Capsicum Annum)</i>	-	-	-	-
Cabai Rawit/ <i>Chili (Capsicum Frutescens)</i>	-	1	-	1
Cabai/ <i>Chili</i>	-	1	-	1
Jamur/ <i>Mushroom</i>	-	-	-	-
Kacang Merah/ <i>Red Bean</i>	-	-	-	-
Kacang Panjang/ <i>Yarldlong Bean</i>	1	-	-	-
Kangkung/ <i>Kangkong</i>	1	1	-	2
Kembang Kol/ <i>Cauliflower</i>	-	-	-	-
Kentang/ <i>Potato</i>	-	-	-	-
Ketimun/ <i>Cucumber</i>	-	-	-	-
Kubis/ <i>Cabbage</i>	-	-	-	-
Labu Siam/ <i>Chayote</i>	-	-	-	1
Lobak/ <i>Radish</i>	-	-	-	-
Paprika/ <i>Bell Pepper</i>	-	-	-	-
Petsai/ <i>Chinese Cabbage</i>	-	1	1	-
Terung/ <i>Eggplant</i>	1	-	-	1
Tomat/ <i>Tomato</i>	-	-	-	-
Wortel/ <i>Carrot</i>	-	-	-	-

Lanjutan Tabel/*Continued Table 3.1.1*

Jenis Tanaman <i>Kind of Plants</i>	2016	2017	2018	2019
(1)	(2)	(3)	(4)	(5)
Buah-Buahan/ Fruits				
Blewah/ <i>Cantaloupe</i>	-	-	-	-
Melon/ <i>Melon</i>	-	-	-	-
Semangka/ <i>Watermelon</i>	-	-	-	-
Stroberi/ <i>Strawberry</i>	-	-	-	-

Sumber/*Source*: BPS, Statistik Pertanian Hortikultura SPH-SBS/BPS-*Statistics Indonesia, Agricultural Statistics for Horticulture, SPH-SBS*

Tabel 3.1.2 **Produksi Tanaman Sayuran dan Buah-Buahan Semusim menurut Jenis Tanaman di Kecamatan Kayan Hilir (kuintal), 2016–2019**
Production of Seasonal Vegetables and Fruits by Kind of Plant in Kayan Hilir Subdistrict (quintal), 2016–2019

Jenis Tanaman Kind of Plants	2016	2017	2018	2019
(1)	(2)	(3)	(4)	(5)
Sayuran/ Vegetables				
Bawang Daun/ <i>Wlech Onion</i>	-	-	-	-
Bawang Merah/ <i>Shallot</i>	-	-	-	-
Bawang Putih/ <i>Garlic</i>	-	-	-	-
Bayam/ <i>Spinach</i>	-	-	50	-
Buncis/ <i>Green Bean</i>	-	-	-	-
Cabai Besar/ <i>Chili (Capsicum Annum)</i>	-	-	-	-
Cabai Rawit/ <i>Chili (Capsicum Frutescens)</i>	-	80	-	160
Cabai/ <i>Chili</i>	-	80	-	160
Jamur/ <i>Mushroom</i>	-	-	-	-
Kacang Merah/ <i>Red Bean</i>	-	-	-	-
Kacang Panjang/ <i>Yarldlong Bean</i>	9	-	-	-
Kangkung/ <i>Kangkong</i>	150	150	-	300
Kembang Kol/ <i>Cauliflower</i>	-	-	-	-
Kentang/ <i>Potato</i>	-	-	-	-
Ketimun/ <i>Cucumber</i>	-	-	-	-
Kubis/ <i>Cabbage</i>	-	-	-	-
Labu Siam/ <i>Chayote</i>	-	-	-	300
Lobak/ <i>Radish</i>	-	-	-	-
Paprika/ <i>Bell Pepper</i>	-	-	-	-
Petsai/ <i>Chinese Cabbage</i>	-	190	190	-
Terung/ <i>Eggplant</i>	200	-	-	200
Tomat/ <i>Tomato</i>	-	-	-	-
Wortel/ <i>Carrot</i>	-	-	-	-

Lanjutan Tabel/*Continued Table 3.1.2*

Jenis Tanaman <i>Kind of Plants</i>	2016	2017	2018	2019
(1)	(2)	(3)	(4)	(5)
Buah-Buahan/ Fruits				
Blewah/ <i>Cantaloupe</i>	-	-	-	-
Melon/ <i>Melon</i>	-	-	-	-
Semangka/ <i>Watermelon</i>	-	-	-	-
Stroberi/ <i>Strawberry</i>	-	-	-	-

Sumber/*Source*: BPS, Statistik Pertanian Hortikultura SPH-SBS/*BPS-Statistics Indonesia, Agricultural Statistics for Horticulture, SPH-SBS*

Tabel 3.1.3 **Luas Panen Tanaman Biofarmaka menurut Jenis Tanaman di Kecamatan Kayan Hilir (m²), 2016–2019**
Table 3.1.3 **Harvested Area of Medical Plants by Kind of Plant in Kayan Hilir Subdistrict (m²), 2016–2019**

Jenis Tanaman Kind of Plants	2016	2017	2018	2019
(1)	(2)	(3)	(4)	(5)
Dlingo/Dringo/ Sweet Root/ <i>Calamus</i>	-	-	-	-
Jahe/ <i>Ginger</i>	2	1	1	3
Kapulaga/ <i>Java Cardamon</i>	-	-	-	-
Keji Beling/Kecibeling/ <i>Strobilanthescrispa</i>	-	-	-	-
Kencur/ <i>East Indian Galangal</i>	-	-	-	-
Kunyit/ <i>Turmeric</i>	1	-	-	1
Laos/Lengkuas/ <i>Galanga</i>	8	9	9	4
Lempuyang/ <i>Zingiber Aromaticum</i>	-	-	-	-
Lidah Buaya/ <i>Oliviera</i>	-	-	-	-
Mahkota Dewa/ <i>God's Crown</i>	1	-	-	-
Mengkudu/Pace/ <i>Indian Mulberry</i>	1	-	-	-
Sambiloto/ <i>King of Bitter</i>	-	-	-	-
Temuireng/ <i>Black Turmeric</i>	-	-	-	-
Temukunci/ <i>Chinese Keys</i>	-	-	-	-
Temulawak/ <i>Java Turmeric</i>	1	-	-	-

Sumber/Source: BPS, Statistik Pertanian Hortikultura SPH-TBF/BPS-Statistics Indonesia, Agricultural Statistics for Horticulture, SPH-TBF

Tabel 3.1.4 **Produksi Tanaman Biofarmaka menurut Jenis Tanaman di Kecamatan Kayan Hilir (kg), 2016–2019**
Production of Medical Plants by Kind of Plant in Kayan Hilir Subdistrict (kg), 2016–2019

Jenis Tanaman <i>Kind of Plants</i>	2016	2017	2018	2019
(1)	(2)	(3)	(4)	(5)
Dlingo/Dringo/ <i>Sweet Root/Calamus</i>	-	-	-	-
Jahe/ <i>Ginger</i>	2	3	6	10
Kapulaga/ <i>Java Cardamon</i>	-	-	-	-
Keji Beling/Kecibeling/ <i>Strobilanthescrispa</i>	-	-	-	-
Kencur/ <i>East Indian Galangal</i>	-	-	-	-
Kunyit/ <i>Turmeric</i>	1	-	-	3
Laos/Lengkuas/ <i>Galanga</i>	27	56	62	44
Lempuyang/ <i>Zingiber Aromaticum</i>	-	-	-	-
Lidah Buaya/ <i>Oliviera</i>	-	-	-	-
Mahkota Dewa/ <i>God's Crown</i>	16	-	-	-
Mengkudu/Pace/ <i>Indian Mulberry</i>	21	-	-	-
Sambiloto/ <i>King of Bitter</i>	-	-	-	-
Temuireng/ <i>Black Turmeric</i>	-	-	-	-
Temukunci/ <i>Chinese Keys</i>	-	-	-	-
Temulawak/ <i>Java Turmeric</i>	2	-	-	-

Sumber/Source: BPS, Statistik Pertanian Hortikultura SPH-TBF/BPS-Statistics Indonesia, Agricultural Statistics for Horticulture, SPH-TBF

Tabel 3.1.5 **Luas Panen Tanaman Hias menurut Jenis Tanaman di Kecamatan Kayan Hilir (m²), 2016–2019**
Table 3.1.5 **Harvested Area of Ornamental Plants by Kind of Plant in Kayan Hilir Subdistrict (m²), 2016–2019**

Jenis Tanaman Kind of Plants	2016	2017	2018	2019
(1)	(2)	(3)	(4)	(5)
Adenium (Kamboja Jepang)/ <i>Adenium obesum</i>	-	-	-	-
Aglaonema/ <i>Chinese evergreens</i>	-	-	-	-
Anggrek/ <i>Orchid</i>	-	-	-	-
Anthurium Bunga/ <i>Flamingo Lily Flower</i>	-	-	-	-
Anthurium Daun/ <i>Laceleaf</i>	-	-	-	-
Anyelir/ <i>Carnation</i>	-	-	-	-
Caladium/ <i>Heart of Jesus</i>	-	-	-	-
Cordyline/ <i>Cordyline</i>	-	-	-	-
Diffenbachia/ <i>Dumb canes</i>	-	-	-	-
Dracaena/ <i>Dracaena</i>	-	-	-	-
Euphorbia/ <i>Spurges</i>	-	-	-	-
Herbras/ <i>Gerbera</i>	-	-	-	-
Gladiol/ <i>Gladiol</i>	-	-	-	-
Pisang–pisangan/ <i>Heliconia</i>	-	-	-	-
Soka/ <i>Ixora</i>	-	-	-	-
Krisan/ <i>Chrysantemum</i>	-	-	-	-
Mawar/ <i>Rose</i>	-	-	-	-
Melati/ <i>Jasmine</i>	-	-	-	-
Monstera/ <i>Swiss cheese plant</i>	-	-	-	-
Pakis/ <i>Fern</i>	-	-	-	-
Palem/ <i>Palm</i>	-	-	-	-
Philodendron/ <i>Philodendron</i>	-	-	-	-
Pedang-pedangan/ <i>Sansevieria</i>	-	-	-	-
Sedap Malam/ <i>Tuberose</i>	-	-	-	-

Sumber/Source: BPS, Statistik Pertanian Hortikultura SPH-TH/BPS-Statistics Indonesia, *Agricultural Statistics for Horticulture, SPH-TH*

Tabel 3.1.6 **Produksi Tanaman Hias menurut Jenis Tanaman di Kecamatan Kayan Hilir (tangkai), 2016–2019**
Production of Ornamental Plants by Kind of Plant in Kayan Hilir Subdistrict (stalks), 2016–2019

Jenis Tanaman <i>Kind of Plants</i>	2016	2017	2018	2019
(1)	(2)	(3)	(4)	(5)
Adenium (Kamboja Jepang)/ <i>Adenium obesum</i>	-	-	-	-
Aglaonema/ <i>Chinese evergreens</i>	-	-	-	-
Anggrek/ <i>Orchid</i>	-	-	-	-
Anthurium Bunga/ <i>Flamingo Lily Flower</i>	-	-	-	-
Anthurium Daun/ <i>Laceleaf</i>	-	-	-	-
Anyelir/ <i>Carnation</i>	-	-	-	-
Caladium/ <i>Heart of Jesus</i>	-	-	-	-
Cordyline/ <i>Cordyline</i>	-	-	-	-
Diffenbachia/ <i>Dumb canes</i>	-	-	-	-
Dracaena/ <i>Dracaena</i>	-	-	-	-
Euphorbia/ <i>Spurges</i>	-	-	-	-
Herbras/ <i>Gerbera</i>	-	-	-	-
Gladiol/ <i>Gladiol</i>	-	-	-	-
Pisang–pisangan/ <i>Heliconia</i>	-	-	-	-
Soka/ <i>Ixora</i>	-	-	-	-
Krisan/ <i>Chrysantemum</i>	-	-	-	-
Mawar/ <i>Rose</i>	-	-	-	-
Melati/ <i>Jasmine</i>	-	-	-	-
Monstera/ <i>Swiss cheese plant</i>	-	-	-	-
Pakis/ <i>Fern</i>	-	-	-	-
Palem/ <i>Palm</i>	-	-	-	-
Philodendron/ <i>Philodendron</i>	-	-	-	-
Pedang-pedangan/ <i>Sansevieria</i>	-	-	-	-
Sedap Malam/ <i>Tuberose</i>	-	-	-	-

Sumber/Source: BPS, Statistik Pertanian Hortikultura SPH-TH/BPS-Statistics Indonesia, *Agricultural Statistics for Horticulture, SPH-TH*

Tabel 3.1.7 **Produksi Buah-Buahan dan Sayuran Tahunan menurut Jenis Tanaman di Kecamatan Kayan Hilir (ku), 2016–2019**
Production of Annual Fruits and Vegetables by Kind of Plant in Kayan Hilir Subdistrict (qu), 2016–2019

Jenis Tanaman <i>Kind of Plants</i>	2016	2017	2018	2019
(1)	(2)	(3)	(4)	(5)
Buah-Buahan/ Fruits				
Alpukat/ <i>Avocado</i>	-	-	-	-
Anggur/ <i>Grape</i>	-	-	-	-
Apel/ <i>Apple</i>	-	-	-	-
Belimbing/ <i>Star Fruit</i>	-	-	-	-
Duku/Langsat/Kokosan/ <i>Duku</i>	-	-	-	-
Durian/ <i>Durian</i>	-	-	-	-
Jambu Air/ <i>Rose Apple</i>	-	-	-	-
Jambu Biji/ <i>Guava</i>	-	-	-	-
Jeruk Besar/ <i>Pomelo</i>	-	-	-	-
Jeruk Siam/Keprok/ <i>Tangerine/Orange</i>	-	-	-	-
Jeruk/ Orange (<i>Tangerine + Pomelo</i>)	-	-	-	-
Mangga/ <i>Mango</i>	-	10	7	13
Manggis/ <i>Mangosteen</i>	-	-	-	-
Markisa/ <i>Marquisa</i>	-	-	-	-
Nangka/Cempedak/ <i>Jack Fruit</i>	-	-	-	-
Nenas/ <i>Pineapple</i>	-	-	-	-
Pepaya/ <i>Papaya</i>	-	19	15	10
Pisang/ <i>Banana</i>	-	-	-	-
Rambutan/ <i>Rambutan</i>	-	-	-	-
Salak/ <i>Salacca</i>	-	-	-	-
Sawo/Sapodilla/ <i>Star Apple</i>	-	-	-	-
Sirsak/ <i>Soursop</i>	-	-	-	-
Sukun/ <i>Bread Fruit</i>	-	-	-	-

Lanjutan Tabel/*Continued Table 3.1.14*

Jenis Tanaman <i>Kind of Plants</i>	2016	2017	2018	2019
(1)	(2)	(3)	(4)	(5)
Sayuran/<i>Vegetables</i>				
Jengkol/ <i>Jengkol</i>	-	-	-	-
Melinjo/ <i>Melinjo</i>	-	-	-	-
Petai/ <i>Twisted Cluster Bean</i>	-	-	-	-

Sumber/*Source*: BPS, Statistik Pertanian Hortikultura SPH-BST/BPS-*Statistics Indonesia, Agricultural Statistics for Horticulture, SPH-BST*

**3.2 PERKEBUNAN
ESTATE CROPS**

Tabel 3.2.1 Luas Areal Tanaman Perkebunan menurut Kelurahan/Desa dan Jenis Tanaman di Kecamatan Kayan Hilir (ha), 2018–2019
Table 3.2.1 Planted Area of Estate Crops by Kelurahan/Village and Kind of Plant in Kayan Hilir Subdistrict (ha), 2018–2019

Kelurahan/Desa Kelurahan/Village	Kelapa Sawit Oil Palm		Kelapa Coconut	
	2018	2019	2018	2019
(1)	(2)	(3)	(4)	(5)
Metun	-	...	-	...
Sungai Anai	-	...	-	...
Long Pipa	-	...	-	...
Long Sule	-	...	-	...
Data Dian	-	...	-	...
Kayan Hilir	-	...	-	...

Lanjutan Tabel/*Continued Table 3.2.1*

Kelurahan/Desa Kelurahan/Village	Karet Rubber		Kopi Coffee	
	2018	2019	2018	2019
(1)	(2)	(3)	(4)	(5)
Metun	-	...	-	...
Sungai Anai	-	...	-	...
Long Pipa	-	...	-	...
Long Sule	-	...	-	...
Data Dian	-	...	-	...
Kayan Hilir	41	...	60	...

Lanjutan Tabel/Continued Table 3.2.1

Kelurahan/Desa Kelurahan/Village	Kakao Cocoa		Tebu Sugar Cane	
	2018	2019	2018	2019
(1)	(2)	(3)	(4)	(5)
Metun	-	...	-	...
Sungai Anai	-	...	-	...
Long Pipa	-	...	-	...
Long Sule	-	...	-	...
Data Dian	-	...	-	...
Kayan Hilir	-	...	-	...

Lanjutan Tabel/Continued Table 3.2.1

Kelurahan/Desa Kelurahan/Village	Teh Tea		Tembakau Tobacco	
	2018	2019	2018	2019
(1)	(2)	(3)	(4)	(5)
Metun	-	...	-	...
Sungai Anai	-	...	-	...
Long Pipa	-	...	-	...
Long Sule	-	...	-	...
Data Dian	-	...	-	...
Kayan Hilir	-	...	-	...

Sumber/Source: Dinas Pertanian Kabupaten Malinau/Regional Office of Agriculture of Malinau Regency

Tabel 3.2.2 **Produksi Tanaman Perkebunan menurut Kelurahan/Desa dan Jenis Tanaman di Kecamatan Kayan Hilir (ku), 2018–2019**
Table 3.2.2 **Production of Estate Crops by Kelurahan/Village and Kind of Plant in Kayan Hilir Subdistrict (qu), 2018–2019**

Kelurahan/Desa Kelurahan/Village	Kelapa Sawit Oil Palm		Kelapa Coconut	
	2018	2019	2018	2019
(1)	(2)	(3)	(4)	(5)
Metun	-	...	-	...
Sungai Anai	-	...	-	...
Long Pipa	-	...	-	...
Long Sule	-	...	-	...
Data Dian	-	...	-	...
Kayan Hilir	-	...	-	...

Lanjutan Tabel/*Continued Table 3.2.2*

Kelurahan/Desa <i>Kelurahan/Village</i>	Karet <i>Rubber</i>		Kopi <i>Coffee</i>	
	2018	2019	2018	2019
(1)	(2)	(3)	(4)	(5)
Metun	-	...	-	...
Sungai Anai	-	...	-	...
Long Pipa	-	...	-	...
Long Sule	-	...	-	...
Data Dian	-	...	-	...
Kayan Hilir	-	...	5	...

Lanjutan Tabel/Continued Table 3.2.2

Kelurahan/Desa Kelurahan/Village	Kakao Cocoa		Tebu Sugar Cane	
	2018	2019	2018	2019
(1)	(2)	(3)	(4)	(5)
Metun	-	...	-	...
Sungai Anai	-	...	-	...
Long Pipa	-	...	-	...
Long Sule	-	...	-	...
Data Dian	-	...	-	...
Kayan Hilir	-	...	-	...

Lanjutan Tabel/*Continued Table 3.2.2*

Kelurahan/Desa <i>Kelurahan/Village</i>	Teh <i>Tea</i>		Tembakau <i>Tobacco</i>	
	2018	2019	2018	2019
(1)	(2)	(3)	(4)	(5)
Metun	-	...	-	...
Sungai Anai	-	...	-	...
Long Pipa	-	...	-	...
Long Sule	-	...	-	...
Data Dian	-	...	-	...
Kayan Hilir	-	...	-	...

Sumber/*Source*: Dinas Pertanian Kabupaten Malinau/*Regional Office of Agriculture of Malinau Regency*

**3.3 PETERNAKAN
LIVESTOCK**

Tabel 3.3.1 Populasi Ternak menurut Kelurahan/Desa dan Jenis Ternak di Kecamatan Kayan Hilir (ekor), 2018–2019
Livestock Population by Kelurahan/Village and Kind of Livestock in Kayan Hilir Subdistrict (heads), 2018–2019

Kelurahan/Desa Kelurahan/Village	Sapi Perah/Dairy Cattle		Sapi Potong/Beef Cattle	
	2018	2019	2018	2019
(1)	(2)	(3)	(4)	(5)
Metun	-	-	-	-
Sungai Anai	-	-	-	-
Long Pipa	-	-	-	-
Long Sule	-	-	-	-
Data Dian	-	-	-	-
Kayan Hilir	-	-	-	-

Lanjutan Tabel/*Continued Table 3.3.1*

Kelurahan/Desa Kelurahan/Village	Kerbau/Buffalo		Kuda/Horse	
	2018	2019	2018	2019
(1)	(2)	(3)	(4)	(5)
Metun	-	-	-	-
Sungai Anai	-	-	-	-
Long Pipa	-	-	-	-
Long Sule	-	-	-	-
Data Dian	-	-	-	-
Kayan Hilir	-	-	-	-

Lanjutan Tabel/Continued Table 3.3.1

Kelurahan/Desa Kelurahan/Village	Kambing/Goat		Domba/Sheep		Babi/Pig	
	2018	2019	2018	2019	2018	2019
(1)	(10)	(11)	(12)	(13)	(14)	(15)
Metun	-	-	-	-	-	-
Sungai Anai	-	-	-	-	-	-
Long Pipa	-	-	-	-	-	-
Long Sule	-	-	-	-	-	-
Data Dian	-	-	-	-	-	-
Kayan Hilir	-	-	-	-	1 117	1 120

Sumber/Source: Dinas Pertanian Kabupaten Malinau/Regional Office of Agriculture of Malinau Regency

Tabel 3.3.2 **Populasi Unggas menurut Kelurahan/Desa dan Jenis Ternak di Kecamatan Kayan Hilir (ekor), 2018–2019**
Poultry Population by Kelurahan/Village and Kind of Poultry in Kayan Hilir Subdistrict (heads), 2018–2019

Kelurahan/Desa <i>Kelurahan/Village</i>	Ayam Kampung/ <i>Native Chicken</i>		Ayam Petelur <i>Layer</i>	
	2018	2019	2018	2019
(1)	(2)	(3)	(4)	(5)
Metun	-	-	-	-
Sungai Anai	-	-	-	-
Long Pipa	-	-	-	-
Long Sule	-	-	-	-
Data Dian	-	-	-	-
Kayan Hilir	2 388	2 378	-	-

Lanjutan Tabel/Continued Table 3.3.2

Kelurahan/Desa Kelurahan/Village	Ayam Pedaging Broiler		Itik/Itik Manila Duck	
	2018	2019	2018	2019
(1)	(2)	(3)	(4)	(5)
Metun	-	-	-	-
Sungai Anai	-	-	-	-
Long Pipa	-	-	-	-
Long Sule	-	-	-	-
Data Dian	-	-	-	-
Kayan Hilir	-	-	-	-

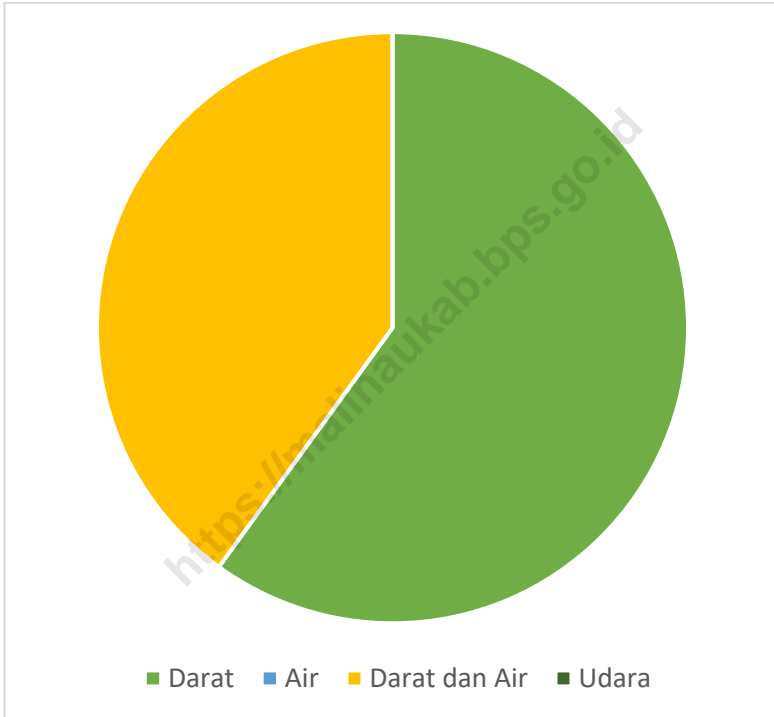
Sumber/Source: Dinas Pertanian Kabupaten Malinau/Regional Office of Agriculture of Malinau Regency

04

**PARIWISATA
TOURISM**

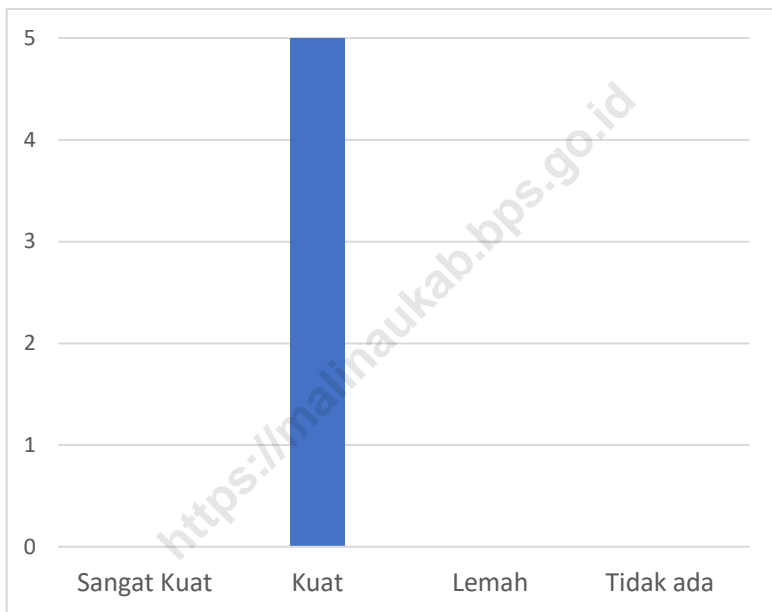


Gambar 4.1 Sarana Transportasi Antar Desa/Kelurahan menurut Kelurahan/Desa di Kecamatan Kayan Hilir, 2019
Figures 4.1 *Inter-Village/Kelurahan Transportation Facilities by Kelurahan/Village in Kayan Hilir Subdistrict, 2019*



Sumber/Source: BPS, Pendataan Potensi Desa (Podes)/ BPS–Statistics Indonesia, Village Potential Data Collection

Gambar 4.2 Jumlah Menara dan Operator Layanan Komunikasi Telepon Seluler Serta Kondisi Sinyal Telepon Seluler menurut Kelurahan/Desa di Kecamatan Kayan Hilir, 2019
Number of Operating Financial Institution Facilities by Kelurahan/Village in Kayan Hilir Subdistrict, 2019



Sumber/Source: BPS, Pendataan Potensi Desa (Podes)/BPS-Statistics Indonesia, Village Potential Data Collecting

Tabel 4.1 Banyaknya Sarana dan Prasarana Ekonomi menurut Kelurahan/Desa dan Jenisnya di Kecamatan Kayan Hilir, 2019
Number of Economic Facilities and Infrastructure by Kelurahan/Village in Kayan Hilir Subdistrict, 2019

Kelurahan/Desa Kelurahan/Village	Kelompok Pertokoan Shopping Complex	Pasar dengan Bangunan Permanen Market in Permanent Building	Pasar dengan Bangunan Semi Permanen Market without Semi-Permanent Building	Pasar Tanpa Bangunan Market without Permanent Building
(1)	(2)	(3)	(4)	(5)
Metun	-	-	-	-
Sungai Anai	-	-	-	-
Long Pipa	-	-	-	-
Long Sule	-	-	-	-
Data Dian	-	-	1	-
Kayan Hilir	-	-	1	-

Lanjutan Tabel/Continued Table 4.1

Kelurahan/Desa Kelurahan/Village	Minimarket / Swalayan² Minimarket/ Supermarket²	Toko/Warung Kelontong Shop/ Grocery Store	Restoran/ Rumah Makan Restaurant/ Food Stall
(1)	(2)	(3)	(4)
Metun	-	3	-
Sungai Anai	-	3	-
Long Pipa	-	3	-
Long Sule	-	12	-
Data Dian	-	9	-
Kayan Hilir	-	30	-

Lanjutan Tabel/Continued Table 4.1

Kelurahan/Desa Kelurahan/Village	Warung/Kedai Makanan Food & Beverage Store	Hotel Hotel	Hostel/Motel/ Losmen/Wisma Hostel/ Motel/ Inn/ Pensions
(1)	(2)	(3)	(4)
Metun	-	-	-
Sungai Anai	-	-	-
Long Pipa	1	-	-
Long Sule	2	-	-
Data Dian	-	-	-
Kayan Hilir	3	-	-

Sumber/Source: BPS, Pendataan Potensi Desa (Podes)/ BPS—Statistics Indonesia, Village Potential Data Collection

Tabel
Table 4.3

Banyaknya Sarana Lembaga Keuangan yang Beroperasi menurut Kelurahan/Desa dan Jenisnya di Kecamatan Kayan Hilir, 2019
Number of Operating Financial Institution Facilities by Kelurahan/Village in Kayan Hilir Subdistrict, 2019

Kelurahan/Desa Kelurahan/Village	Bank Umum Pemerintah Government Bank	Bank Umum Swasta Private Bank	Bank Perkreditan Rakyat Rural Bank
(1)	(2)	(3)	(4)
Metun	-	-	-
Sungai Anai	-	-	-
Long Pipa	-	-	-
Long Sule	-	-	-
Data Dian	-	-	-
Kayan Hilir	-	-	-

Sumber/Source: BPS, Pendataan Potensi Desa (Podes) / BPS—Statistics Indonesia, Village Potential Data Collection

Tabel 4.4 Banyaknya Koperasi yang Masih Aktif menurut Kelurahan/Desa dan Jenis Koperasi di Kecamatan Kayan Hilir, 2019
Table 4.4 *Number of Active Cooperatives by Kelurahan/Village in Kayan Hilir Subdistrict, 2019*

Kelurahan/Desa Kelurahan/Village	Koperasi Unit Desa (KUD) Village Cooperative Unit	Koperasi Industri Kecil dan Kerajinan Rakyat (Kopinkra) Small Industry and Citizen Handicraft Cooperative	Koperasi Simpan Pinjam (Kospin) Saving and Loan Cooperative	Koperasi Lainnya Other Cooperative
(1)	(2)	(3)	(4)	(5)
Metun	-	-	-	-
Sungai Anai	-	-	-	-
Long Pipa	1	-	-	-
Long Sule	-	1	-	-
Data Dian	-	-	-	-
Kayan Hilir	1	1	-	-

Sumber/Source: BPS, Pendataan Potensi Desa (Podes)/ BPS—Statistics Indonesia, Village Potential Data Collection

Tabel
Table 4.5

Jumlah Menara dan Operator Layanan Komunikasi Telepon Seluler Serta Kondisi Sinyal Telepon Seluler menurut Kelurahan/Desa di Kecamatan Kayan Hilir, 2019
Number of Operating Financial Institution Facilities by Kelurahan/Village in Kayan Hilir Subdistrict, 2019

Kelurahan/Desa Kelurahan/Village	Jumlah Menara Telepon Seluler (BTS) Number of Base Transceiver Station (BTS)	Jumlah Operator Layanan Komunikasi Telepon Seluler Yang Menjangkau di Desa/ Kelurahan Number of Celluler Communication Service Operators Reaching Village/ Kelurahan	Kondisi Sinyal Telepon Seluler di Sebagian Besar Wilayah Desa/Kelurahan Cellular Phone Signal Condition in Majority of Village/Kelurahan Area
(1)	(2)	(3)	(4)
Metun	1	1	2
Sungai Anai	-	1	2
Long Pipa	-	1	2
Long Sule	1	1	2
Data Dian	1	1	2
Kayan Hilir	3	1*	2*

Catatan/Note: ¹ Kondisi sinyal disajikan dalam bentuk skala likert dari 1 (satu) untuk sinyal sangat kuat hingga 4 (empat) untuk tidak ada sinyal / Signal conditions are presented in the form of a Likert scale from 1 (one) for a very strong signal to 4 (four) for no signal

* penilaian berdasar nilai di ibukota kecamatan

Sumber/Source: BPS, Pendataan Potensi Desa (Podes)/ BPS–Statistics Indonesia, Village Potential Data Collection

Tabel
Table 4.6

Sarana Transportasi Antar Desa/Kelurahan menurut Kelurahan/Desa di Kecamatan Kayan Hilir, 2019
Inter-Village/Kelurahan Transportation Facilities by Kelurahan/Village in Kayan Hilir Subdistrict, 2019

Kelurahan/Desa Kelurahan/Village	Jenis Transportasi Type of Transportation	Keberadaan Angkutan Umum Availability of Public Transportation
(1)	(2)	(3)
Metun	1	3
Sungai Anai	1	3
Long Pipa	3	3
Long Sule	3	3
Data Dian	1	3

Catatan/Note: ¹ Jenis Transportasi disajikan dalam 4 (empat) kode, yaitu / *Types of transportation are presented in 4 (four) codes, namely:*

- (1) Darat saja / *Land only*
- (2) Air saja / *Water only*
- (3) Darat dan Air / *Land and water*
- (4) Udara saja / *Air only*

Jika dalam satu wilayah terdapat lebih dari 2 (dua) Jenis Transportasi, akan diambil angka terkecil / *If in an area there are more than 2 (two) types of transportation, the smallest number will be taken*

² Dalam pengkodean Keberadaan angkutan umum / *In coding the existence of public transport*

- (1) Ada, dengan trayek tetap / *There is a fixed routet*
- (2) Ada, tanpa trayek tetap / *There are no fixed routes*
- (3) Tidak ada angkutan umum / *There is no public transportation*

Sumber/Source: BPS, Pendataan Potensi Desa (Podes) / *BPS—Statistics Indonesia, Village Potential Data Collection*

Tabel 4.7 Kondisi Jalan Darat Antar Desa/Kelurahan menurut Kelurahan/Desa di Kecamatan Kayan Hilir, 2019
Condition of Inter-Village/Kelurahan Roads by Kelurahan/Village in Kayan Hilir Subdistrict, 2019

Kelurahan/Desa Kelurahan/Village	Jenis Permukaan Jalan Type of Road Surface	Dapat Dilalui Kendaraan Bermotor Roda 4 atau Lebih Can be Passed by Four or More Wheel Vehicle
(1)	(2)	(3)
Metun	3	2
Sungai Anai	3	3
Long Pipa	1	4
Long Sule	1	4
Data Dian	3	2

Catatan/Note: ¹ Jenis Permukaan Jalan disajikan dalam 4 (empat) kode, yaitu / *Types of Road Surface are presented in 4 (four) codes, namely:*

- (1) Aspal atau beton / *Asphalt or concrete*
- (2) Diperkeras (kerikil, batu, dll.) / *Hardened (gravel, stone, etc.)*
- (3) Tanah / *Land*
- (4) Lainnya / *Other*

² Kondisi jalan dapat dilalui oleh kendaraan bermotor roda 4 atau lebih / *Road conditions can be traversed by motorized vehicles with 4 or more wheels:*

- (1) Sepanjang tahun / *Throughout the year*
- (2) Sepanjang tahun kecuali saat tertentu / *All year long except certain times*
- (3) Selama musim kemarau / *During the dry season*
- (4) Tidak dapat dilalui sepanjang tahun / *Not passable throughout the year*

Sumber/Source: BPS, Pendataan Potensi Desa (Podes) / *BPS—Statistics Indonesia, Village Potential Data Collection*

Tabel
Table 4.8

Keberadaan Kantor Pos/Pos Pembantu/Rumah Pos dan Perusahaan/Agen Jasa Ekspedisi Swasta menurut Kelurahan/Desa di Kecamatan Kayan Hilir, 2019
Availability of Post Office/Subsidiary of Post Office and Private Expedition Service Company by Kelurahan/Village in Kayan Hilir Subdistrict, 2019

Kelurahan/Desa Kelurahan/Village	Kantor Pos/Pos Pembantu/ Rumah Pos Post Office/Subsidiary of Post Office	Perusahaan/Agen Jasa Ekspedisi Swasta Private Expedition Service Company
(1)	(2)	(3)
Metun	4	4
Sungai Anai	4	4
Long Pipa	4	4
Long Sule	4	4
Data Dian	1	4

Catatan/Note: ¹ Terdapat 4 (empat) kode, yaitu / There are 4 (four) codes, namely:

- (1) Beroperasi / Operating
- (2) Jarang beroperasi / Rarely operates
- (3) Tidak berfungsi / Not working
- (4) Tidak ada / None

Sumber/Source: BPS, Pendataan Potensi Desa (Podes) / BPS—Statistics Indonesia, Village Potential Data Collection

<https://malinaukab.bps.go.id>



Sensus
Penduduk
2020

#MencatatIndonesia

DATA

MENCERDASKAN BANGSA

Enlighten The Nation



**BADAN PUSAT STATISTIK
KABUPATEN MALINAU
BPS-STATISTICS OF MALINAU REGENCY**

Jl. Pusat Pemerintahan, Malinau 77554
Telp.: 0553-2022087; E-mail: 6501@bps.go.id
Homepage: <http://malinaukab.bps.go.id>

ISSN 2715-2340



9 772715 234001