

# KECAMATAN KEDONDONG DALAM ANGKA

*Kedondong Subdistrict in Figure*

## 2023



<https://pesawarankab.bps.go.id>



**BADAN PUSAT STATISTIK  
KABUPATEN PESAWARAN**

*BPS-Statistics Pesawaran Regency*

# KECAMATAN KEDONDONG DALAM ANGKA

*Kedondong Subdistrict in Figure*

## 2023



**KECAMATAN KEDONDONG DALAM ANGKA**  
***Kedondong Subdistrict in Figures***  
**2023**

**ISSN:** 2830-7321

**No. Publikasi/Publication Number:** 18090.2311

**Katalog /Catalog:** 1102001.1809030

**Ukuran Buku/Book Size:** 14,8 cm x 21 cm

**Jumlah Halaman/Number of Pages :** xxii + 54 hal/pages

**Naskah/Manuscript:**

BPS Kabupaten Pesawaran/BPS-Statistics Pesawaran Regency

**Penyunting/Editor:**

BPS Kabupaten Pesawaran/BPS-Statistics Pesawaran Regency

**Gambar Kover/Cover Design:**

Seksi Integrasi Pengolahan dan Diseminasi Statistik

*Section of Integration Processing and Statistics Dissemination*

**Ilustrasi Kover/Cover Illustration:**

BPS Kabupaten Pesawaran/BPS-Statistics Pesawaran Regency

**Diterbitkan oleh/Published by:**

©BPS Kabupaten Pesawaran/BPS-Statistics of Pesawaran Regency

**Dicetak oleh/Printed by:**

BPS Kabupaten Pesawaran/BPS-Statistics Pesawaran Regency

**Dilarang mengumumkan, mendistribusikan, mengomunikasikan, dan/atau menggandakan sebagian atau seluruh isi buku ini untuk tujuan komersil tanpa izin tertulis dari Badan Pusat Statistik.**

*Prohibited to announce, distribute, communicate, and/or copy part or all of this book for commercial purpose without permission from BPS-Statistics Indonesia.*

## **TIM PENYUSUN/TEAM MEMBERS**

### **Pengarah/Director**

Ir. Sugiarto

### **Penanggung Jawab/Persons in Charge**

Rizqa Fithriani, SST., M.Si.

### **Penyunting/Editors**

Ana Destriana, S.Si.

### **Pengolah Data dan Penulis Naskah/Data Processing and Authors**

Aisyah Salsabila, S.Tr.Stat.

Yoga Cahya Putra, S.Tr.Stat.

Sopa Maulidia, A.Md. Stat.

Guruh Dewa Prataba, A.Md. Stat.

### **Penata Letak/Layout Designers**

Aisyah Salsabila, S.Tr.Stat.

Yoga Cahya Putra, S.Tr.Stat.

Sopa Maulidia, A.Md. Stat.

Guruh Dewa Prataba, A.Md. Stat.

### **Infografik/Infographic**

Yoga Cahya Putra, S.Tr.Stat.

Guruh Dewa Prataba, A.Md. Stat.

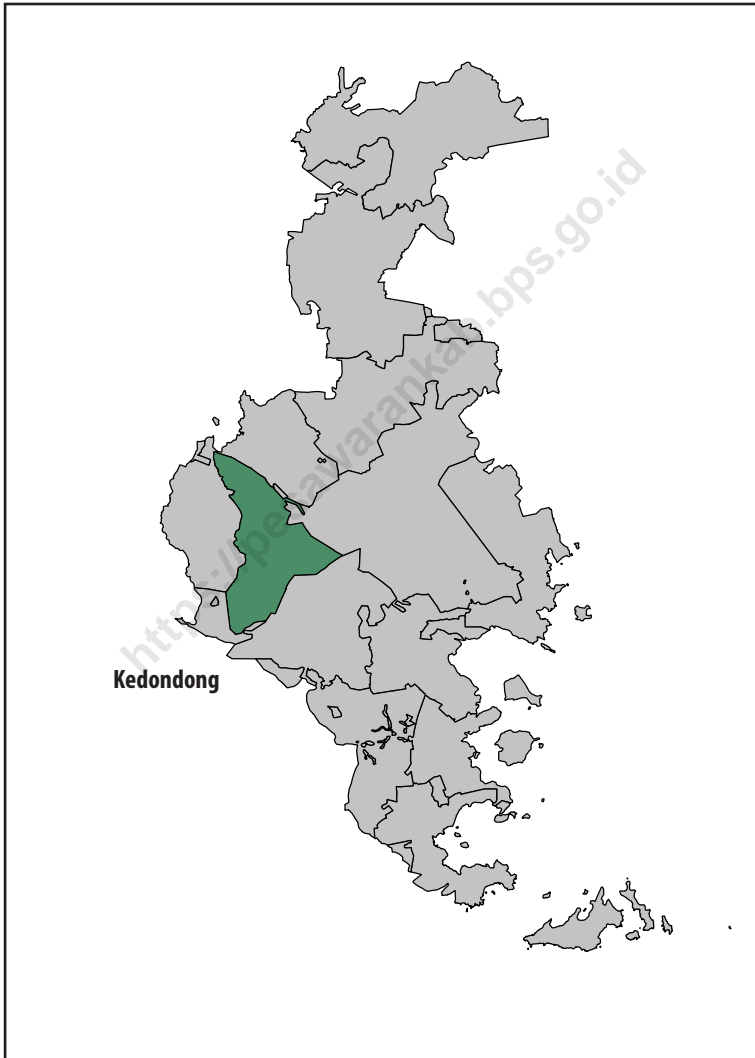


## KONTRIBUTOR DATA/DATA CONTRIBUTOR

1. Badan Pusat Statistik/ *BPS-Statistics Indonesia*
2. Bagian Tata Pemerintahan Kabupaten Pesawaran/ *Regional Government of Pesawaran Regency*
3. Dinas Kependudukan dan Pencatatan Sipil Kabupaten Pesawaran/ *Population and Civil Registration Agency of Pesawaran Regency*
4. Kementerian Pendidikan, Kebudayaan, Riset, dan Teknologi/ *Ministry of Education, Culture, Research, and Technology*
5. Kementerian Agama/ *Ministry of Religious Affairs*
6. Dinas Pertanian dan Tanaman Pangan Kabupaten Pesawaran/ *Agriculture and Food Crops Agency of Pesawaran Regency*
7. Dinas Perkebunan dan Peternakan Kabupaten Pesawaran/ *Estate and Livestock Agency of Pesawaran Regency*



**PETA WILAYAH KECAMATAN KEDONDONG**  
*Map of Kedondong Subdistrict*









## KATA PENGANTAR

Kecamatan Kedondong Dalam Angka 2023 merupakan publikasi tahunan yang diterbitkan oleh BPS Kabupaten Pesawaran. Disadari bahwa publikasi ini belum sepenuhnya memenuhi harapan pihak pemakai data khususnya para perencana, namun diharapkan dapat membantu melengkapi penyusunan rencana pembangunan di Kabupaten Pesawaran, khususnya di Kecamatan Kedondong.

Publikasi ini dapat terwujud berkat kerja sama dan bantuan dari berbagai pihak baik instansi pemerintah maupun swasta. Kepada semua pihak yang telah memberikan bantuan disampaikan penghargaan dan terima kasih yang sebesar-besarnya.

Walaupun publikasi ini telah disiapkan sebaik-baiknya, namun disadari masih ada kekurangan dan kesalahan yang terjadi. Untuk perbaikan publikasi ini, tanggapan dan saran yang bersifat konstruktif dari para pemakai sangat diharapkan.

Gedong Tataan, September 2023  
Kepala Badan Pusat Statistik  
Kabupaten Pesawaran

**Ir Sugiarto**



## **PREFACE**

*Kedondong Subdistrict in Figures 2023 is an annual publication written by BPS-Statistics of Pesawaran Regency. Honestly, this publication has not perfect yet and has not filled the user's hope, especially for the planners yet, but hopefully it can help to equip compilation of development planning in Pesawaran Regency, especially in Kedondong Subdistrict.*

*This comprehensive publication has been made possible with the assistance and contribution from several governmental institutions and private organizations. To all parties who have been involved in the preparation of this publication, I would like to express my sincerest appreciation and gratitude.*

*Comments and constructive suggestions for the improvement of this publication are always welcome.*

*Gedong Tataan, September 2023  
Chief Statistician of  
Pesawaran Regency*

**Ir. Sugiarto**

## DAFTAR ISI / CONTENTS

	Halaman <i>Page</i>
Kata Pengantar/ <i>Preface</i> .....	ix
Daftar Isi/ <i>Contents</i> .....	xi
Daftar Tabel/ <i>List of Tables</i> .....	ix
Daftar Gambar/ <i>List of Figures</i> .....	xvii
1. Geografi/ <i>Geography</i> .....	1
2. Pemerintahan/ <i>Government</i> .....	7
3. Penduduk/ <i>Population</i> .....	13
4. Sosial dan Kesejahteraan Rakyat/ <i>Social and Welfare</i> .....	19
5. Pertanian, Perkebunan, dan Peternakan/ <i>Agriculture, Forestry, and Livestock</i> .....	29



## DAFTAR TABEL/LIST OF TABLES

	Halaman Page
<b>1. GEOGRAFI/GEOGRAPHY</b>	
1.1 Luas Daerah menurut Desa di Kecamatan Kedondong, 2022 <i>Total Area by Village in Kedondong Subdistrict, 2022</i> .....	4
1.2 Jarak ke Ibukota Kecamatan, dan Ibukota Kabupaten menurut Desa di Kecamatan Kedondong (km), 2022 <i>Distance to Subdistrict Capital, and Regency Capital by Villages in Kedondong Subdistrict (km), 2022</i> .....	5
<b>2. PEMERINTAHAN/GOVERNMENT</b>	
<b>2.1 WILAYAH ADMINISTRATIF/ADMINISTRATIVE AREA</b>	
2.1.1 Jumlah Dusun, dan Jumlah Rukun Tetangga (RT) menurut Desa di Kecamatan Kedondong, 2022 <i>Number of Hamlet, and Number of Neighbourhood Association by Villages in Kedondong Subdistrict, 2022</i> .....	10
<b>2.2 SUMBER DAYA MANUSIA/HUMAN RESOURCES</b>	
2.2.1 Jumlah Aparat Pemerintahan Desa menurut Desa di Kecamatan Kedondong, 2022 <i>Number of Village Government Officials by Villages in Kedondong Subdistrict, 2022</i> .....	11
<b>3. PENDUDUK/POPULATION</b>	
3.1 Penduduk, Distribusi Persentase Penduduk, Kepadatan Penduduk, dan Rasio Jenis Kelamin menurut Desa di Kecamatan Kedondong, 2022 <i>Population, Percentage Distribution of Population, Population Density, and Sex Ratio, by Village in Kedondong Subdistrict, 2022</i> .....	16
<b>4. SOSIAL DAN KESEJAHTERAAN/SOCIAL AND WELFARE</b>	
<b>4.1 PENDIDIKAN/EDUCATION</b>	
4.1.1 Jumlah Sekolah menurut Tingkat Pendidikan di Kecamatan Kedondong, 2021/2022 dan 2022/2023 <i>Number of Schools by Educational Level in Kedondong Subdistrict, 2021/2022 and 2022/2023</i> .....	23

4.1.2	Jumlah Guru menurut Tingkat Pendidikan di Kecamatan Kedondong, 2021/2022 dan 2022/2023 <i>Number of Teachers by Educational Level in Kedondong Subdistrict, 2021/2022 and 2022/2023.....</i>	24
4.1.3	Jumlah Murid menurut Tingkat Pendidikan di Kecamatan Kedondong, 2021/2022 dan 2022/2023 <i>Number of Pupils by Educational Level in Kedondong Subdistrict, 2021/2022 and 2022/2023.....</i>	25
<b>4.2</b>	<b>KESEHATAN/HEALTH</b>	
4.2.1	Banyaknya Desa yang Memiliki Sarana Kesehatan menurut Jenisnya di Kecamatan Kedondong 2020-2022 <i>Number of Villages That Have Health Facilities by Type in Kedondong Subdistrict 2020-2022 .....</i>	26
4.2.2	Banyaknya Warga Penderita Kekurangan Gizi menurut Desa di Kecamatan Kedondong, 2020-2022 <i>Number of People with Malnutrition by Village in Kedondong Subdistrict, 2020-2022 .....</i>	27
<b>4.3</b>	<b>AGAMA DAN SOSIAL LAINNYA/ RELIGION AND OTHER SOCIAL AFFAIRS</b>	
4.3.1	Jumlah Tempat Peribadatan menurut Desa di Kecamatan Kedondong, 2022 <i>Number of Places of Worship by Village in Kedondong Subdistrict, 2022 .....</i>	28
<b>5.</b>	<b>PERTANIAN, PERKEBUNAN, DAN PETERNAKAN/ AGRICULTURE, ESTATE, AND LIVESTOCK</b>	
<b>5.1</b>	<b>LUAS LAHAN/LAND AREA</b>	
5.1.1	Luas Lahan menurut Desa dan Jenis Penggunaan Lahan di Kecamatan Kedondong (ha), 2022 <i>Land Area by Village and Type of Land Use in Kedondong Subdistrict (ha), 2022 .....</i>	33
5.1.2	Luas Lahan Pertanian Sawah menurut Desa dan Jenis Pengairan di Kecamatan Kedondong (ha), 2022 <i>Wetland Area by Village and Type of Irrigation in Kedondong Subdistrict (ha), 2022 .....</i>	34

5.1.3	Luas Lahan Pertanian Non Sawah menurut Desa dan Jenis Penggunaan Lahan di Kecamatan Kedondong (ha), 2022 <i>Non-Wetland Area by Village and Type of Land Use in Kedondong Subdistrict (ha), 2022</i> .....	35
<b>5.2</b>	<b>TANAMAN PANGAN/FOOD CROPS</b>	
5.2.1	Luas Panen (ha) dan Produksi Tanaman Pangan (ton) menurut Desa dan Jenis Tanaman di Kecamatan Kedondong, 2022 <i>Harvested Area (ha) and Production (ton) of Food Crops by Village and Kind of Plant in Kedondong Subdistrict, 2022</i> .....	37
<b>5.3</b>	<b>HORTIKULTURA/HORTICULTURE</b>	
5.3.1	Luas Panen Tanaman Sayuran dan Buah–Buahan Semusim menurut Jenis Tanaman di Kecamatan Kedondong , 2019-2022 <i>Harvested Area of Seasonal Vegetables and Fruits by Kind of Plant in Kedondong Subdistrict, 2019-2022</i> .....	41
5.3.2	Produksi Tanaman Sayuran dan Buah–Buahan Semusim Menurut Jenis Tanaman di Kecamatan Kedondong, 2019-2022 <i>Production of Seasonal Vegetables and Fruits by Kind of Plant in Kedondong Subdistrict, 2019-2022</i> .....	42
5.3.3	Luas Panen Tanaman Biofarmaka menurut Jenis Tanaman di Kecamatan Kedondong, 2019–2022 <i>Harvested Area of Medicinal Plants by Kind of Plant in Kedondong Subdistrict, 2019–2022</i> .....	43
5.3.4	Produksi Tanaman Biofarmaka menurut Jenis Tanaman di Kecamatan Kedondong, 2019–2022 <i>Production of Medicinal Plants by Kind of Plant in Kedondong Subdistrict, 2019–2022</i> .....	44
5.3.5	Luas Panen Tanaman Hias menurut Jenis Tanaman di Kecamatan Kedondong, 2019–2022 <i>Harvested Area of Ornamental Plants by Kind of Plant in Kedondong Subdistrict, 2019–2022</i> .....	45
5.3.6	Produksi Tanaman Hias menurut Jenis Tanaman di Kecamatan Kedondong, 2019-2022 <i>Production of Ornamental Plants by Kind of Plant in Kedondong Subdistrict, 2019-2022</i> .....	46



5.3.7	Produksi Buah–Buahan dan Sayuran Tahunan menurut Jenis Tanaman di Kecamatan Kedondong, 2019–2022 <i>Production of Annual Fruits and Vegetables by Kind of Plant in Kedondong Subdistrict, 2019–2022</i> .....	47
<b>5.4</b>	<b>PERKEBUNAN/ESTATE</b>	
5.4.1	Luas Panen (ha) dan Produksi (ton) Tanaman Perkebunan menurut Jenis Tanaman di Kecamatan Kedondong, 2022 <i>Harvest Area (ha) and Production (ton) of Estate Crops by Kind of Plant in Kedondong Subdistrict, 2022</i> .....	48
<b>5.5</b>	<b>PETERNAKAN/LIVESTOCK</b>	
5.5.1	Populasi Ternak menurut Jenis Ternak dan Desa di Kecamatan Kedondong, 2022 <i>Livestock Population by Kind of Livestock and Villages in Kedondong Subdistrict, 2022</i> .....	51
5.5.2	Populasi Unggas menurut Jenis Unggas dan Desa di Kecamatan Kedondong, 2022 <i>Poultry Population by Kind of Poultry and Villages in Kedondong Subdistrict, 2022</i> .....	52
5.5.3	Jumlah Pemotongan Ternak/Unggas Tercatat menurut Jenis Ternak/Unggas di Kecamatan Kedondong, 2022 <i>Number of Slaughters of Livestock/Poultry Recorded by Kind of Livestock/Poultry in Kedondong Subdistrict, 2022</i> .....	53
5.5.4	Produksi Daging dan Telur menurut Jenis Ternak/ Unggas di Kecamatan Kedondong (kg), 2022 <i>Flesh and Egg Production by Kind of Livestock/Poultry in Kedondong Subdistrict (kg), 2022</i> .....	54

## DAFTAR GAMBAR/LIST OF FIGURES

	Halaman Page
1.1 Persentase Luas Daerah Terhadap Luas Kecamatan menurut Desa di Kecamatan Kedondong, 2022 <i>Percentage of Area To Subdistrict Area by Village in Kedondong Subdistrict, 2022</i> .....	3
2.1 Jumlah Dusun dan Jumlah Rukun Tetangga (RT) menurut Desa di Kecamatan Kedondong, 2022 <i>Number of Hamlet and Number of Neighbourhood Association by Villages in Kedondong Subdistrict, 2022</i> .....	9
3.1 Jumlah Penduduk menurut Desa di Kecamatan Kedondong, 2022 <i>Population by Village in Kedondong Subdistrict, 2022</i> .....	15
4.1 Jumlah Sekolah menurut Tingkat Pendidikan di Kecamatan Kedondong, 2022/2023 <i>Number of Schools by Educational Level in Kedondong Subdistrict, 2022/2023</i> .....	21
4.2 Banyaknya Desa yang Memiliki Sarana Kesehatan menurut Jenisnya di Kecamatan Kedondong, 2022 <i>Number of Villages That Have Health Facilities by Type in Kedondong Subdistrict, 2022</i> .....	22
5.1 Lima Komoditas Tanaman Sayuran dan Buah–Buahan Semusim dengan Jumlah Produksi Terbesar di Kecamatan Kedondong, 2022 <i>Five Commodities of Seasonal Vegetables and Fruits with The Largest Production in Kedondong Subdistrict, 2022</i> .....	31
5.2 Lima Komoditas Tanaman Sayuran dan Buah–Buahan Tahunan dengan Jumlah Produksi Terbesar di Kecamatan Kedondong, 2019-2022 <i>Five Commodities of Annual Vegetables and Fruits with The Largest Production in Kedondong Subdistrict, 2019-2022</i> .....	32



## PENJELASAN UMUM/EXPLANATORY NOTES

Tanda-tanda, satuan-satuan, dan lain-lainnya yang digunakan dalam publikasi ini adalah sebagai berikut:

*Symbols, measurement units, and acronyms which are used in this publication, are as follows:*

### 1. TANDA-TANDA/SYMBOLS

Data tidak tersedia/Data not available .....	: ...
Tidak ada atau nol /Null or zero .....	: -
Data dapat diabaikan/Data negligible .....	: 0
Tanda decimal/Decimal point .....	: ,
Data tidak dapat ditampilkan/Not applicable .....	: NA
Angka estimasi/Estimated figures .....	: e
Angka diperbaiki/Revised figures .....	: r
Angka sementara/Preliminary figures .....	: x
Angka sangat sementara/Very preliminary figures .....	: xx
Angka sangat sangat sementara/Very very preliminary figures .....	: xxx

### 2. SATUAN/UNITS

barel/barrel .....	: 158,99 liter/litres = 1/6,2898 m <sup>3</sup>
hektar (ha)/hectare (ha) .....	: 10 000 m <sup>2</sup>
kilometer (km)/kilometres (km) .....	: 1 000 meter/meters (m)
knot/knot .....	: 1,8523 km/jam (km/hour)
kuintal/quintal .....	: 100 kg
KWh .....	: 1 000 Watt hour
MWh .....	: 1 000 KWh
liter (untuk beras)/litre (for rice) .....	: 0,80 kg
MMSCF .....	: 1/35,3 m <sup>3</sup>
metrik ton (m.ton)/metric ton (m. ton) .....	: 0,98421 long ton = 1 000 kg
ons/ounce .....	: 28,31 gram/grams
ton .....	: 1 000 kg

Satuan lain: buah, dus, butir, helai/lembar, kaleng, batang, pulsa, ton kilometer (ton-km), jam, menit, persen (%).

*Other units: unit, pack, pieces, sheet, tin, pulse, ton-kilometres(ton-km), hour, minute, percent (%).*

Perbedaan angka di belakang koma disebabkan oleh pembulatan angka.

*The difference in decimal numbers is caused by rounding.*



## DAFTAR SINGKATAN/ LIST OF ABBREVIATIONS

SI	: Stasiun Iklim
SIMPK	: Stasiun Meteorologi Pertanian Khusus
t.t	: Tempat tidur
BCG	: Bacillus Calmette Guerin
DPT	: Difteri, Pertusis, Tetanus
TT	: Tetanus Toxoid
IOT	: Industri Obat Tradisional/ <i>Traditional Medicine Industry</i>
IKOT	: Industri Kecil Obat Tradisional/ <i>Traditional Medicine Small</i>
Alkes	: Alat kesehatan/ <i>Health Kits</i>
PKRT	: Perbekalan Kesehatan Rumah tangga/ <i>Household Health Logistics</i>
Kompl	: Komplemen/ <i>Complement</i>
IRTP	: Industri Pangan Produksi Rumah Tangga/ <i>Foods Home Industry</i>
PBF	: Pedagang Besar Farmasi/ <i>Pharmacy Whole-seller</i>
GFK	: Gudang Farmasi Kab/Kota/Regency/ <i>Municipality Pharmacy Warehouse</i>
RB	: Rumah Bersalin/ <i>Delivery House</i>
Pustu	: Puskesmas pembantu/ <i>Auxiliary Public Health Center</i>
BP	: Balai Pengobatan/ <i>Polyclinic</i>
TPS	: Tempat Pembuangan Sementara / <i>landfill</i>
Jamkesmas	: Jaminan kesehatan masyarakat miskin/ <i>Poor public health insurance</i>
PJKMU	: Program Jaminan Kesehatan Masyarakat Umum
SIUP	: Surat Ijin Usaha Perdagangan/ <i>Trading Permission Letter</i>
TDP	: Tanda Daftar Perusahaan/ <i>Company Registration Identity</i>
API	: Angka Pengenal Importir/ <i>Importer's Identity Number</i>



# 01

# GEOGRAFI GEOGRAPHY



GPS MARKERS



CARTOGRAPHY



NAVIGATION



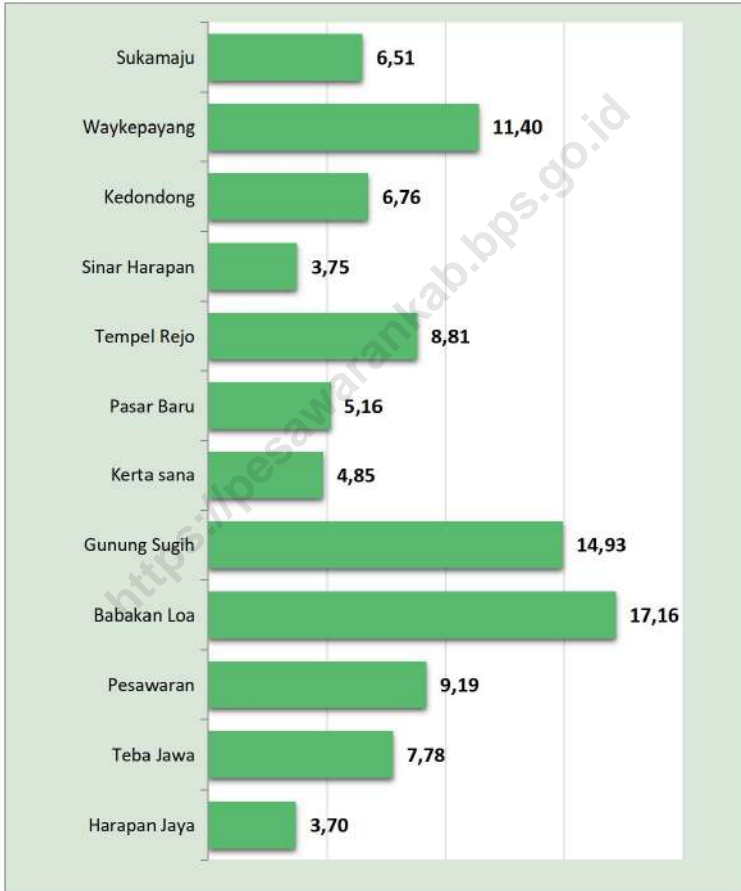
LOCATION





**Gambar** 1.1  
**Figures**

**Persentase Luas Daerah Terhadap Luas Kecamatan menurut Desa di Kecamatan Kedondong, 2022**  
*Percentage of Area To Subdistrict Area by Village in Kedondong Subdistrict, 2022*



Sumber/Source: Bagian Tata Pemerintahan Setdakab. Pesawaran/Regional Government of Pesawaran Regency

**Tabel**  
**Table** 1.1**Luas Daerah menurut Desa di Kecamatan Kedondong,  
2022**  
**Total Area by Village in Kedondong Subdistrict, 2022**

Kelurahan/Desa Kelurahan/Village	Luas Total Area (km <sup>2</sup> /sq.km)	Persentase terhadap Luas Kecamatan Percentage to Subdistrict Area
(1)	(2)	(3)
1. Sukamaju	4,36	6,51
2. Waykepayang	7,64	11,40
3. Kedondong	4,53	6,76
4. Sinar Harapan	2,51	3,75
5. Tempel Rejo	5,90	8,81
6. Pasar Baru	3,46	5,16
7. Kerta sana	3,25	4,85
8. Gunung Sugih	10,00	14,93
9. Babakan Loa	11,50	17,16
10. Pesawaran	6,16	9,19
11. Teba Jawa	5,21	7,78
12. Harapan Jaya	2,48	3,70
<b>Kecamatan Kedondong</b>	<b>67,00</b>	<b>100,00</b>

Sumber/Source: Bagian Tata Pemerintahan Setdakab. Pesawaran/Regional Government of Pesawaran Regency

**Tabel**  
**Table 1.2**

**Jarak ke Ibukota Kecamatan, dan Ibukota Kabupaten menurut Desa di Kecamatan Kedondong (km), 2022**  
***Distance to Subdistrict Capital, and Regency Capital by Villages in Kedondong Subdistrict (km), 2022***

<b>Desa/Village</b>	<b>Jarak ke Ibukota Kecamatan <i>Distance to Subdistrict Capital</i></b>	<b>Jarak ke Ibukota Kabupaten <i>Distance to Regency Capital</i></b>
(1)	(2)	(3)
1. Sukamaju	6,00	23,00
2. Waykepayang	3,00	20,00
3. Kedondong	0,50	17,50
4. Sinar Harapan	8,00	25,00
5. Tempel Rejo	4,00	21,00
6. Pasar Baru	1,00	18,00
7. Kerta sana	3,00	20,00
8. Gunung Sugih	1,00	18,00
9. Babakan Loa	12,00	29,00
10. Pesawaran	5,00	22,00
11. Teba Jawa	1,50	18,50
12. Harapan Jaya	9,00	26,00

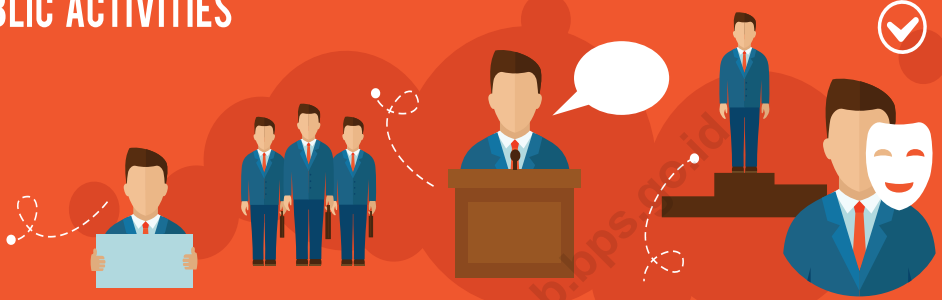
Sumber/Source: Bagian Tata Pemerintahan Setdakab. Pesawaran/*Regional Government of Pesawaran Regency*



# 02

# PEMERINTAHAN GOVERNMENT

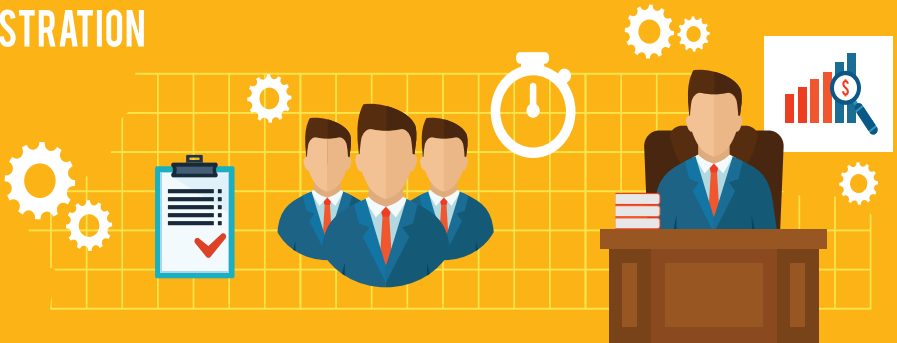
## PUBLIC ACTIVITIES



## GOVERNANCE



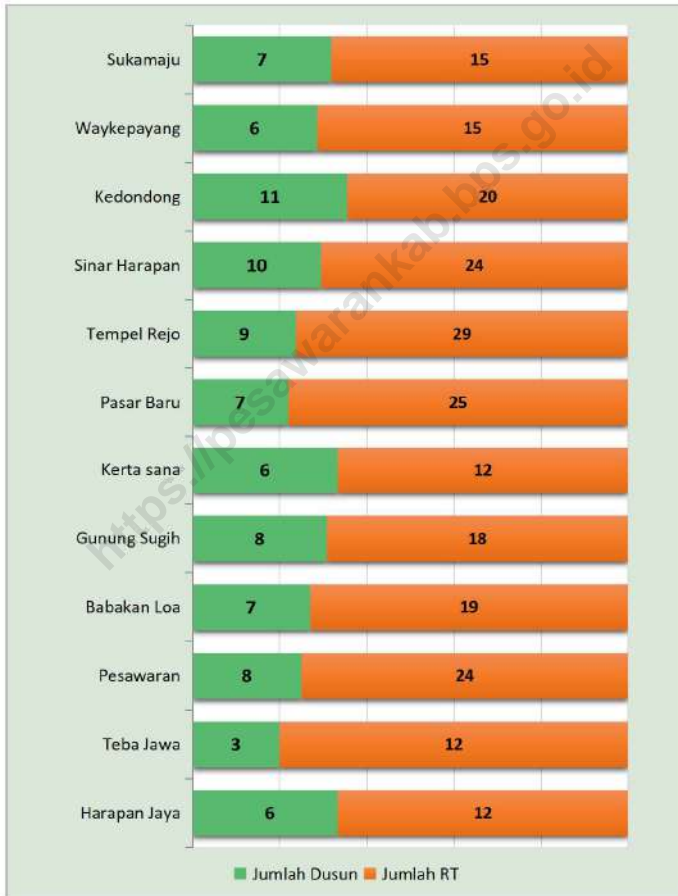
## ADMINISTRATION





**Gambar** 2.1  
**Figures**

**Jumlah Dusun dan Jumlah Rukun Tetangga (RT)  
menurut Desa di Kecamatan Kedondong, 2022**  
*Number of Hamlet and Number of Neighbourhood  
Association by Villages in Kedondong Subdistrict, 2022*



Sumber/Source: Dinas Pemberdayaan Masyarakat dan Desa Kabupaten Pesawaran  
*Community and Village Empowerment Agency of Pesawaran Regency*



## 2.1 WILAYAH ADMINISTRATIF ADMINISTRATIVE AREA

**Tabel** 2.1.1 Jumlah Dusun, dan Jumlah Rukun Tetangga (RT) menurut Desa di Kecamatan Kedondong, 2022  
**Table** 2.1.1 Number of Hamlet, and Number of Neighbourhood Association by Villages in Kedondong Subdistrict, 2022

Desa/Village (1)	Jumlah Dusun Number of Hamlet (3)	Jumlah RT Number of Neighbourhood Association (4)
1. Sukamaju	7	15
2. Waykepayang	6	15
3. Kedondong	11	20
4. Sinar Harapan	10	24
5. Tempel Rejo	9	29
6. Pasar Baru	7	25
7. Kerta sana	6	12
8. Gunung Sugih	8	18
9. Babakan Loa	7	19
10. Pesawaran	8	24
11. Teba Jawa	3	12
12. Harapan Jaya	6	12
<b>Kecamatan Kedondong</b>	<b>88</b>	<b>225</b>

Sumber/Source: Dinas Pemberdayaan Masyarakat dan Desa Kabupaten Pesawaran  
Community and Village Empowerment Agency of Pesawaran Regency

## 2.2 SUMBER DAYA MANUSIA HUMAN RESOURCES

**Tabel 2.2.1** Jumlah Aparat Pemerintahan Desa menurut Desa di Kecamatan Kedondong, 2022  
*Number of Village Government Officials by Villages in Kedondong Subdistrict, 2022*

Desa/Village	Sekretariat Desa (Sekdes, Kaur) Village Secretariat	Pelaksana Teknis (Kasi) Technical Executor	Pelaksana Kewilayahan (Kadus) Regional Executor
(1)	(2)	(3)	(4)
1. Sukamaju	4	3	7
2. Waykepayang	4	3	6
3. Kedondong	4	3	11
4. Sinar Harapan	4	3	10
5. Tempel Rejo	4	3	9
6. Pasar Baru	4	3	7
7. Kerta sana	4	3	6
8. Gunung Sugih	4	3	8
9. Babakan Loa	4	3	7
10. Pesawaran	4	3	8
11. Teba Jawa	4	3	3
12. Harapan Jaya	4	3	6
<b>Kecamatan Kedondong</b>	<b>48</b>	<b>36</b>	<b>88</b>

Sumber/Source: Dinas Pemberdayaan Masyarakat dan Desa Kabupaten Pesawaran  
*Community and Village Empowerment Agency of Pesawaran Regency*



# 03

## PENDUDUK POPULATION





**Gambar** 3.1  
**Figures**

**Jumlah Penduduk menurut Desa di Kecamatan  
Kedondong, 2022**  
*Population by Village in Kedondong Subdistrict, 2022*



Sumber/Source: Dinas Kependudukan dan Pencatatan Sipil Kabupaten Pesawaran  
*Population and Civil Registration Agency of Pesawaran Regency*

**Tabel**  
**Table 3.1**

**Penduduk, Distribusi Persentase Penduduk, Kepadatan Penduduk, dan Rasio Jenis Kelamin menurut Desa di Kecamatan Kedondong, 2022**  
*Population, Percentage Distribution of Population, Population Density, and Sex Ratio, by Village in Kedondong Subdistrict, 2022*

Desa/Village	Penduduk (jiwa) Population (people)		
	Laki-laki Male	Perempuan Female	Jumlah Total
(1)	(2)	(3)	(4)
1. Sukamaju	1 572	1 422	2 994
2. Waykepayang	1 235	1 113	2 348
3. Kedondong	2 791	2 689	5 480
4. Sinar Harapan	2 425	2 257	4 682
5. Tempel Rejo	2 526	2 312	4 838
6. Pasar Baru	2 351	2 288	4 639
7. Kerta sana	1 092	1 105	2 197
8. Gunung Sugih	1 436	1 392	2 828
9. Babakan Loa	1 212	1 150	2 362
10. Pesawaran	1 854	1 828	3 682
11. Teba Jawa	626	653	1 279
12. Harapan Jaya	817	745	1 562
<b>Kecamatan Kedondong</b>	<b>19 937</b>	<b>18 954</b>	<b>38 891</b>

Lanjutan Tabel/ *Continued Table 3.1*

Desa/Village	Distribusi Persentase Penduduk Percentage Distribution of Population	Kepadatan Penduduk per km <sup>2</sup> Population Density per sq.km	Rasio Jenis Kelamin Sex Ratio
(1)	(5)	(6)	(7)
1. Sukamaju	7,70	686,70	110,55
2. Waykepayang	6,04	307,33	110,96
3. Kedondong	14,09	1 209,71	103,79
4. Sinar Harapan	12,04	1 865,34	107,44
5. Tempel Rejo	12,44	820,00	109,26
6. Pasar Baru	11,93	1 340,75	102,75
7. Kerta sana	5,65	676,00	98,82
8. Gunung Sugih	7,27	282,80	103,16
9. Babakan Loa	6,07	205,39	105,39
10. Pesawaran	9,47	597,73	101,42
11. Teba Jawa	3,29	245,49	95,87
12. Harapan Jaya	4,02	629,84	109,66
<b>Kecamatan Kedondong</b>	<b>100,00</b>	<b>580,46</b>	<b>105,19</b>

Sumber/Source: Dinas Kependudukan dan Pencatatan Sipil Kabupaten Pesawaran  
Population and Civil Registration Agency of Pesawaran Regency





# 04

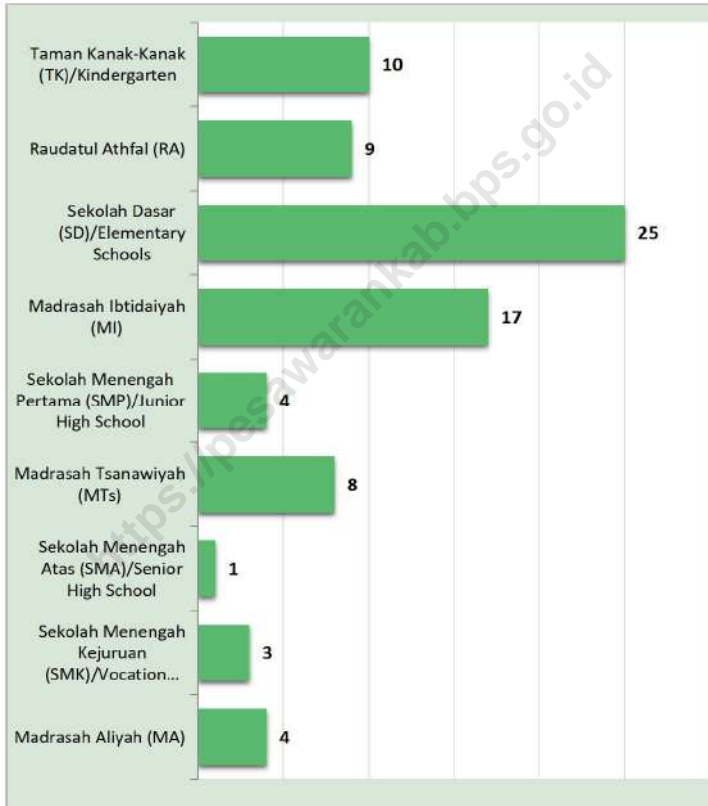
## SOSIAL & SEJAHTERAAN RAKYAT SOCIAL & WELFARE





**Gambar** 4.1  
**Figures**

**Jumlah Sekolah menurut Tingkat Pendidikan di  
Kecamatan Kedondong, 2022/2023**  
**Number of Schools by Educational Level in Kedondong  
Subdistrict, 2022/2023**

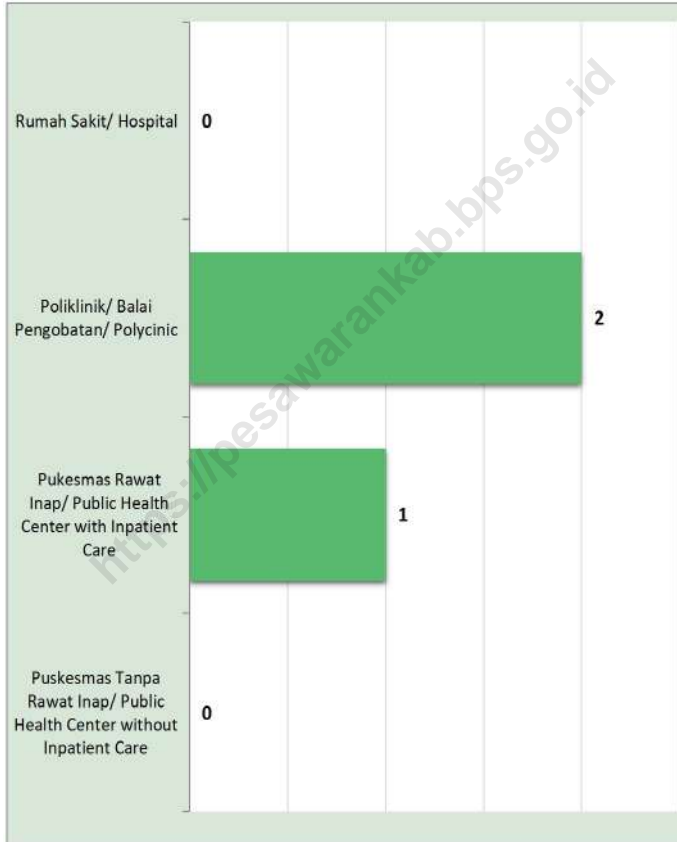


Sumber/Source: <sup>1</sup> Kementerian Pendidikan, Kebudayaan, Riset, dan Teknologi, Sistem Data Pokok Pendidikan, data semester ganjil laporan sampai dengan 30 November 2022/Ministry of Education, Culture, Research, and Technology, Basic Education Data System, odd semester report data up to 30 November 2022

<sup>2</sup> Kementerian Agama, EMIS, data semester ganjil laporan sampai dengan 9 Februari 2023/Ministry of Religious Affairs, EMIS, odd semester report data up to 9 February 2023

**Gambar** 4.2  
**Figures**

**Banyaknya Desa yang Memiliki Sarana Kesehatan menurut Jenisnya di Kecamatan Kedondong, 2022**  
**Number of Villages That Have Health Facilities by Type in Kedondong Subdistrict, 2022**



Sumber/Source: Dinas Kesehatan Kabupaten Pesawaran/Health Agency of Pesawaran Regency

#### 4.1 PENDIDIKAN EDUCATION

**Tabel 4.1.1** Jumlah Sekolah menurut Tingkat Pendidikan di Kecamatan Kedondong, 2021/2022 dan 2022/2023  
**Table 4.1.1** Number of Schools by Educational Level in Kedondong Subdistrict, 2021/2022 and 2022/2023

Tingkat Pendidikan Educational Level	Negeri/Public		Swasta/Private		Jumlah/Total	
	2021/2022	2022/2023	2021/2022	2022/2023	2021/2022	2022/2023
(1)	(2)	(3)	(4)	(5)	(6)	(7)
Taman Kanak-Kanak (TK) <sup>1</sup> /Kindergarten <sup>1</sup>	–	–	10	10	10	10
Raudatul Athfal (RA) <sup>2</sup>	–	–	9	9	9	9
Sekolah Dasar (SD) <sup>1</sup> Elementary Schools <sup>1</sup>	26	24	1	1	27	25
Madrasah Ibtidaiyah (MI) <sup>2</sup>	1	1	16	16	17	17
Sekolah Menengah Pertama (SMP) <sup>1</sup> /Junior High Schools <sup>1</sup>	3	3	1	1	4	4
Madrasah Tsanawiyah (MTs) <sup>2</sup>	1	1	7	7	8	8
Sekolah Menengah Atas (SMA) <sup>1</sup> /Senior High Schools <sup>1</sup>	1	1	–	–	1	1
Sekolah Menengah Kejuruan (SMK) <sup>1</sup> Vocational High Schools <sup>1</sup>	–	–	3	3	3	3
Madrasah Aliyah (MA) <sup>2</sup>	1	1	3	3	4	4

Catatan/Note: Seluruh Raudatul Athfal (RA) berstatus swasta/All Raudatul Athfal (RA) are private

Sumber/Source: <sup>1</sup> Kementerian Pendidikan, Kebudayaan, Riset, dan Teknologi, Sistem Data Pokok Pendidikan, data semester ganjil laporan sampai dengan 30 November 2022/Ministry of Education, Culture, Research, and Technology, Basic Education Data System, odd semester report data up to 30 November 2022

<sup>2</sup> Kementerian Agama, EMIS, data semester ganjil laporan sampai dengan 9 Februari 2023/Ministry of Religious Affairs, EMIS, odd semester report data up to 9 February 2023

**Tabel 4.1.2** Jumlah Guru menurut Tingkat Pendidikan di Kecamatan Kedondong, 2021/2022 dan 2022/2023  
**Table** Number of Teachers by Educational Level in Kedondong Subdistrict, 2021/2022 and 2022/2023

Tingkat Pendidikan Educational Level	Negeri/Public		Swasta/Private		Jumlah/Total	
	2021/2022	2022/2023	2021/2022	2022/2023	2021/2022	2022/2023
(1)	(2)	(3)	(4)	(5)	(6)	(7)
Taman Kanak-Kanak (TK) <sup>1</sup> /Kindergarten <sup>1</sup>	–	–	43	39	43	39
Raudatul Athfal (RA) <sup>2</sup>	–	–	35	46	35	46
Sekolah Dasar (SD) <sup>1</sup> Elementary Schools <sup>1</sup>	243	267	19	19	262	286
Madrasah Ibtidaiyah (MI) <sup>2</sup>	29	35	155	155	184	190
Sekolah Menengah Pertama (SMP) <sup>1</sup> /Junior High Schools <sup>1</sup>	76	71	6	6	82	77
Madrasah Tsanawiyah (MTs) <sup>2</sup>	68	71	111	104	179	175
Sekolah Menengah Atas (SMA) <sup>1</sup> /Senior High Schools <sup>1</sup>	44	44	–	–	44	44
Sekolah Menengah Kejuruan (SMK) <sup>1</sup> Vocational High Schools <sup>1</sup>	–	–	46	46	46	46
Madrasah Aliyah (MA) <sup>2</sup>	62	64	47	46	109	110

Catatan/Note: Jumlah guru termasuk kepala sekolah dan guru/The total of teachers including headmaster and teacher.

Sumber/Source: <sup>1</sup> Kementerian Pendidikan, Kebudayaan, Riset, dan Teknologi, Sistem Data Pokok Pendidikan, data semester ganjil laporan sampai dengan 30 November 2022/Ministry of Education, Culture, Research, and Technology, Basic Education Data System, odd semester report data up to 30 November 2022

<sup>2</sup> Kementerian Agama, EMIS, data semester ganjil laporan sampai dengan 9 Februari 2023/Ministry of Religious Affairs, EMIS, odd semester report data up to 9 February 2023

**Tabel**  
**Table** 4.1.3

**Jumlah Murid menurut Tingkat Pendidikan di Kecamatan Kedondong, 2021/2022 dan 2022/2023**  
**Number of Pupils by Educational Level in Kedondong Subdistrict, 2021/2022 and 2022/2023**

Tingkat Pendidikan Educational Level	Negeri/Public		Swasta/Private		Jumlah/Total	
	2021/2022	2022/2023	2021/2022	2022/2023	2021/2022	2022/2023
(1)	(2)	(3)	(4)	(5)	(6)	(7)
Taman Kanak-Kanak (TK) <sup>1</sup> /Kindergarten <sup>1</sup>	–	–	388	427	388	427
Raudatul Athfal (RA) <sup>2</sup>	–	–	272	362	272	362
Sekolah Dasar (SD) <sup>1</sup> Elementary Schools <sup>1</sup>	2 346	2 263	214	210	2 560	2 473
Madrasah Ibtidaiyah (MI) <sup>2</sup>	958	970	1 464	1 399	2 422	2 369
Sekolah Menengah Pertama (SMP) <sup>1</sup> /Junior High Schools <sup>1</sup>	911	867	26	11	937	878
Madrasah Tsanawiyah (MTs) <sup>2</sup>	1 041	1 048	998	968	2 039	2 016
Sekolah Menengah Atas (SMA) <sup>1</sup> /Senior High Schools <sup>1</sup>	673	656	–	–	673	656
Sekolah Menengah Kejuruan (SMK) <sup>1</sup> Vocational High Schools <sup>1</sup>	–	–	1 010	1 012	1 010	1 012
Madrasah Aliyah (MA) <sup>2</sup>	709	750	495	588	1 204	1 338

Sumber/Source: <sup>1</sup> Kementerian Pendidikan, Kebudayaan, Riset, dan Teknologi, Sistem Data Pokok Pendidikan, data semester ganjil laporan sampai dengan 30 November 2022/Ministry of Education, Culture, Research, and Technology, Basic Education Data System, odd semester report data up to 30 November 2022

<sup>2</sup> Kementerian Agama, EMIS, data semester ganjil laporan sampai dengan 9 Februari 2023/Ministry of Religious Affairs, EMIS, odd semester report data up to 9 February 2023



## 4.2 KESEHATAN HEALTH

**Tabel** 4.2.1 **Banyaknya Desa yang Memiliki Sarana Kesehatan menurut Jenisnya di Kecamatan Kedondong 2020-2022**  
**Table** 4.2.1 **Number of Villages That Have Health Facilities by Type in Kedondong Subdistrict 2020-2022**

Jenis Sarana Kesehatan Type of Health Facilities	2020	2021	2022
(1)	(2)	(3)	(4)
Rumah Sakit <i>Hospital</i>	–	–	–
Rumah Sakit Bersalin <i>Maternity Hospital</i>	...	...	...
Poliklinik/Balai Pengobatan <i>Polyclinic</i>	1	1	2
Puskesmas Rawat Inap <i>Public Health Center with Inpatient Care</i>	...	1	1
Puskesmas Tanpa Rawat Inap <i>Public Health Center without Inpatient Care</i>	...	–	–
Apotek <i>Pharmacy</i>	...	...	...

Sumber/Source: Dinas Kesehatan Kabupaten Pesawaran/Health Agency of Pesawaran Regency

**Tabel**  
**Table** 4.2.2**Banyaknya Warga Penderita Kekurangan Gizi menurut  
Desa di Kecamatan Kedondong, 2020-2022**  
**Number of People with Malnutrition by Village in  
Kedondong Subdistrict, 2020-2022**

Desa/Village	2020	2021	2022
(1)	(2)	(3)	(4)
1. Sukamaju	...	...	...
2. Waykepayang	...	...	...
3. Kedondong	...	...	...
4. Sinar Harapan	...	...	...
5. Tempel Rejo	...	...	...
6. Pasar Baru	...	...	...
7. Kerta sana	...	...	...
8. Gunung Sugih	...	...	...
9. Babakan Loa	...	...	...
10. Pesawaran	...	...	...
11. Teba Jawa	...	...	...
12. Harapan Jaya	...	...	...
<b>Kecamatan Kedondong</b>	<b>65</b>	<b>78</b>	<b>68</b>

Sumber/Source: Dinas Kesehatan Kabupaten Pesawaran/Health Agency of Pesawaran Regency

### 4.3 AGAMA DAN SOSIAL LAINNYA RELIGION AND OTHER SOCIAL AFFAIRS

**Tabel** 4.3.1 Jumlah Tempat Peribadatan menurut Desa di Kecamatan Kedondong, 2022  
**Table** 4.3.1 Number of Places of Worship by Village in Kedondong Subdistrict, 2022

Desa/Village	Masjid	Mushola Pray Room	Gereja Church	Pura Temple	Vihara
(1)	(2)	(3)	(4)	(6)	(7)
1. Sukamaju	4	6	–	–	–
2. Waykepayang	2	6	–	–	–
3. Kedondong	7	10	–	–	–
4. Sinar Harapan	10	5	–	–	–
5. Tempel Rejo	8	8	–	–	–
6. Pasar Baru	3	8	–	–	–
7. Kerta sana	3	–	–	–	–
8. Gunung Sugih	3	7	–	–	–
9. Babakan Loa	4	–	–	–	–
10. Pesawaran	8	6	–	–	–
11. Teba Jawa	1	–	–	–	–
12. Harapan Jaya	1	9	–	–	–
<b>Kecamatan Kedondong</b>	<b>54</b>	<b>65</b>	<b>–</b>	<b>–</b>	<b>–</b>

Sumber/Source: Kementerian Agama Kabupaten Pesawaran/Ministry of Religion of Pesawaran Regency

# 05

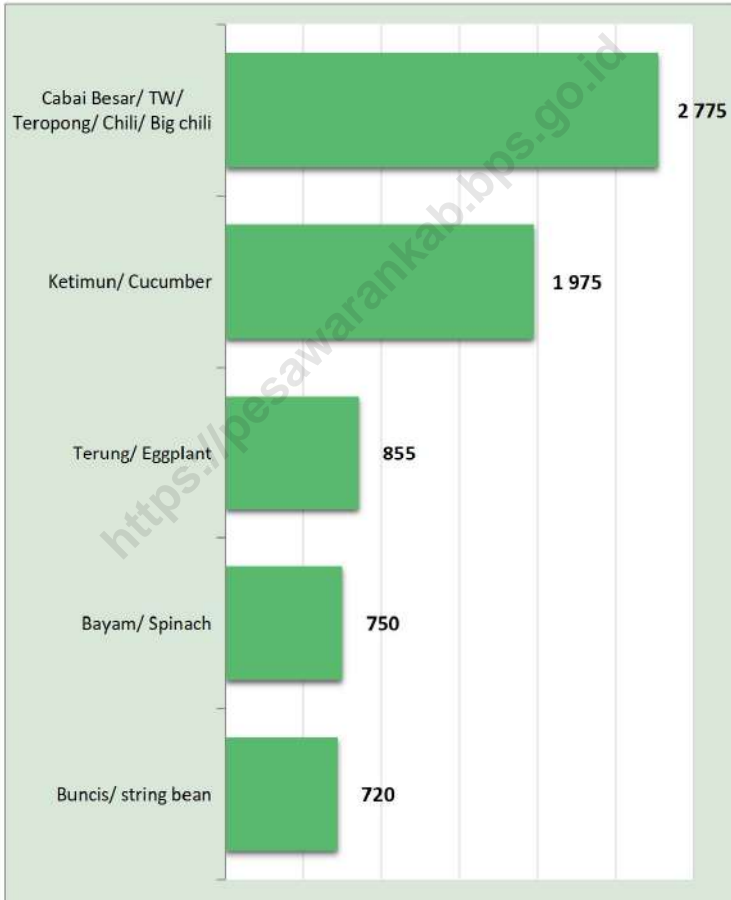
## PERTANIAN, PERKEBUNAN, & PETERNAKAN AGRICULTURE, ESTATE, & LIVESTOCK





**Gambar** 5.1  
**Figures**

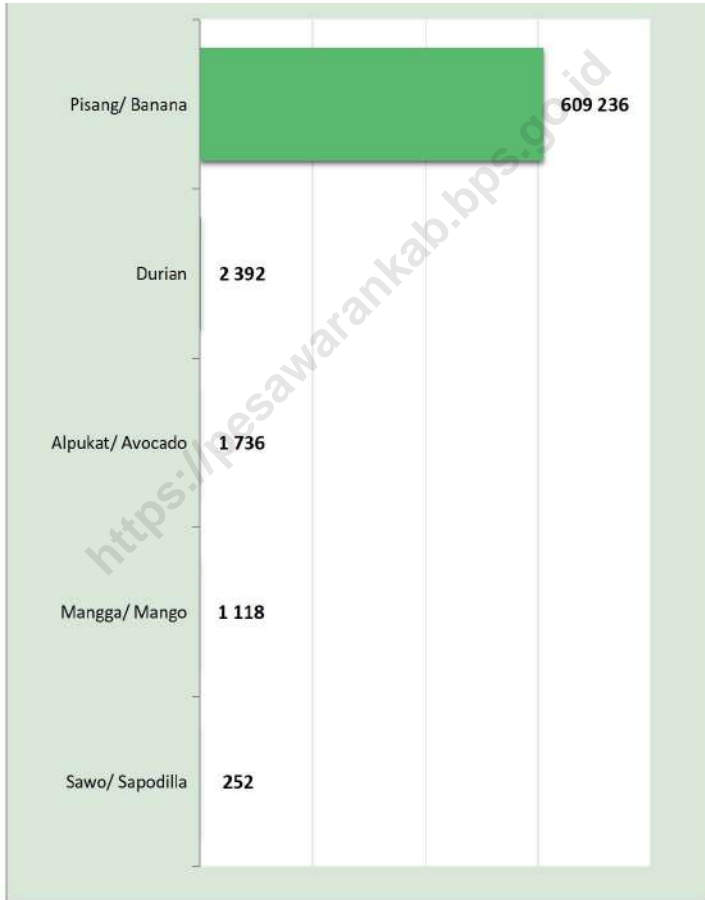
**Lima Komoditas Tanaman Sayuran dan Buah–Buahan  
Semusim dengan Jumlah Produksi Terbesar di  
Kecamatan Kedondong, 2022**  
*Five Commodities of Seasonal Vegetables and Fruits with  
The Largest Production in Kedondong Subdistrict, 2022*



Sumber/Source: BPS, Statistik Pertanian Hortikultura SPH-SBS 2022  
BPS-Statistics Indonesia, Agricultural Statistic for Horticulture SPH-SBS 2022

**Gambar** 5.2  
**Figures**

**Lima Komoditas Tanaman Sayuran dan Buah–Buahan Tahunan dengan Jumlah Produksi Terbesar di Kecamatan Kedondong, 2019–2022**  
**Five Commodities of Annual Vegetables and Fruits with The Largest Production in Kedondong Subdistrict, 2019–2022**



Sumber/Source: BPS, Statistik Pertanian Hortikultura SPH-BST 2022  
BPS-Statistics Indonesia, Agricultural Statistic for Horticulture SPH-BST 2022

## 5.1 LUAS LAHAN LAND AREA

**Tabel 5.1.1 Luas Lahan menurut Desa dan Jenis Penggunaan Lahan di Kecamatan Kedondong (ha), 2022**  
*Land Area by Village and Type of Land Use in Kedondong Subdistrict (ha), 2022*

Desa/Village	Pertanian Sawah/ Wetland	Pertanian Non-Sawah/ Non-Wetland	Non-Pertanian/ Non-Agricultural	Jumlah/ Total
(1)	(2)	(3)	(4)	(5)
1. Sukamaju	31,00	389,38	15,62	436,00
2. Waykepayang	45,00	673,50	45,50	764,00
3. Kedondong	130,00	73,00	250,00	453,00
4. Sinar Harapan	9,50	206,00	35,50	251,00
5. Tempel Rejo	40,00	504,00	46,00	590,00
6. Pasar Baru	27,00	169,50	149,50	346,00
7. Kerta sana	130,00	79,50	115,50	325,00
8. Gunung Sugih	130,00	647,50	222,50	1 000,00
9. Babakan Loa	—	1 057,00	93,00	1 150,00
10. Pesawaran	39,62	549,00	27,38	616,00
11. Teba Jawa	135,00	192,00	194,00	521,00
12. Harapan Jaya	50,50	166,00	31,50	248,00
<b>Kecamatan Kedondong</b>	<b>767,62</b>	<b>4 706,38</b>	<b>1 226,00</b>	<b>6 700,00</b>

Sumber/Source: Dinas Pertanian dan Tanaman Pangan Kabupaten Pesawaran  
*Agriculture and Food Crops Agency of Pesawaran Regency*



**Tabel**  
**Table** 5.1.2

**Luas Lahan Pertanian Sawah menurut Desa dan Jenis Pengairan di Kecamatan Kedondong (ha), 2022**  
**Wetland Area by Village and Type of Irrigation in Kedondong Subdistrict (ha), 2022**

Desa/Village	Irigasi/Irrigation	Non Irigasi/ Non-Irrigation	Jumlah/ Total
(1)	(2)	(3)	(4)
1. Sukamaju	21,00	10,00	31,00
2. Waykepayang	45,00	–	45,00
3. Kedondong	130,00	–	130,00
4. Sinar Harapan	–	9,50	9,50
5. Tempel Rejo	40,00	–	40,00
6. Pasar Baru	–	27,00	27,00
7. Kerta sana	130,00	–	130,00
8. Gunung Sugih	130,00	–	130,00
9. Babakan Loa	–	–	–
10. Pesawaran	39,62	–	39,62
11. Teba Jawa	135,00	–	135,00
12. Harapan Jaya	30,00	20,50	50,50
<b>Kecamatan Kedondong</b>	<b>700,62</b>	<b>67,00</b>	<b>767,62</b>

Sumber/Source: Dinas Pertanian dan Tanaman Pangan Kabupaten Pesawaran  
*Agriculture and Food Crops Agency of Pesawaran Regency*

**Tabel**  
**Table 5.1.3****Luas Lahan Pertanian Non Sawah menurut Desa dan Jenis Penggunaan Lahan di Kecamatan Kedondong (ha), 2022**  
**Non-Wetland Area by Village and Type of Land Use in Kedondong Subdistrict (ha), 2022**

<i>Desa/Village</i>	<i>Tegal/Kebun/ Garden</i>	<i>Ladang/Huma/ Field</i>	<i>Perkebunan/ Estates</i>	<i>Hutan Rakyat/ People Forest</i>
(1)	(2)	(3)	(4)	(5)
1. Sukamaju	329,00	–	55,00	3,00
2. Waykepayang	624,00	–	45,00	1,50
3. Kedondong	40,00	–	30,00	1,50
4. Sinar Harapan	149,00	–	50,00	3,00
5. Tempel Rejo	453,00	–	45,00	3,00
6. Pasar Baru	163,00	–	4,00	1,00
7. Kerta sana	38,00	–	39,00	1,00
8. Gunung Sugih	612,00	–	33,00	1,00
9. Babakan Loa	973,00	–	74,00	6,00
10. Pesawaran	461,00	–	79,00	6,00
11. Teba Jawa	155,00	–	35,00	1,00
12. Harapan Jaya	132,00	–	29,00	1,00
<b>Kecamatan Kedondong</b>	<b>4 129,00</b>	<b>–</b>	<b>518,00</b>	<b>29,00</b>

Lanjutan Tabel/Continued Table 5.1.3

Desa/Village	Padang Rumput/ Grassland	Hutan Negara/ State Forest	Sementara Tidak Diusahakan/ Affording for a while	Lainnya (Tambak, Kolam, Empang, dll)/ Other (Dam, Dyke, etc.)	Jumlah/ Total
(1)	(6)	(7)	(8)	(9)	(10)
1. Sukamaju	–	–	–	2,38	389,38
2. Waykepayang	–	–	–	3,00	673,50
3. Kedondong	–	–	–	1,50	73,00
4. Sinar Harapan	–	–	–	4,00	206,00
5. Tempel Rejo	–	–	–	3,00	504,00
6. Pasar Baru	–	–	–	1,50	169,50
7. Kerta sana	–	–	–	1,50	79,50
8. Gunung Sugih	–	–	–	1,50	647,50
9. Babakan Loa	–	–	–	4,00	1 057,00
10. Pesawaran	–	–	–	3,00	549,00
11. Teba Jawa	–	–	–	1,00	192,00
12. Harapan Jaya	–	–	–	4,00	166,00
<b>Kecamatan Kedondong</b>	–	–	–	<b>30,38</b>	<b>4 706,38</b>

Sumber/Source: Dinas Pertanian dan Tanaman Pangan Kabupaten Pesawaran  
Agriculture and Food Crops Agency of Pesawaran Regency

## 5.2 TANAMAN PANGAN

### FOOD CROPS

**Tabel 5.2.1 Luas Panen (ha) dan Produksi Tanaman Pangan (ton) menurut Desa dan Jenis Tanaman di Kecamatan Kedondong, 2022**  
**Harvested Area (ha) and Production (ton) of Food Crops by Village and Kind of Plant in Kedondong Subdistrict, 2022**

Desa/Village	Padi Sawah/Paddy Wetland		Padi Ladang/Paddy Non- Wetland	
	Luas Panen/ Harvest Area	Produksi/ Production	Luas Panen/ Harvest Area	Produksi/ Production
(1)	(2)	(3)	(4)	(5)
1. Sukamaju	103,44	578,12	46,00	257,10
2. Waykepayang	73,95	413,33	55,50	310,19
3. Kedondong	291,94	1 631,69	5,00	27,95
4. Sinar Harapan	–	–	45,50	254,30
5. Tempel Rejo	148,39	829,35	40,50	226,36
6. Pasar Baru	–	–	–	–
7. Kerta sana	214,61	1 199,46	5,00	27,95
8. Gunung Sugih	250,86	1 402,07	35,00	195,62
9. Babakan Loa	–	–	70,50	394,03
10. Pesawaran	101,50	567,31	50,00	279,45
11. Teba Jawa	294,84	1 647,90	40,00	223,56
12. Harapan Jaya	69,12	386,31	30,00	167,67
<b>Kecamatan Kedondong</b>	<b>1 548,65</b>	<b>8 655,55</b>	<b>423,00</b>	<b>2 364,18</b>

Lanjutan Tabel/Continued Table 5.2.1

Desa/Village	Jagung/Maize		Kedelai/Soybean	
	Luas Panen/ Harvest Area	Produksi/ Production	Luas Panen/ Harvest Area	Produksi/ Production
(1)	(6)	(7)	(8)	(9)
1. Sukamaju	50,00	276,00	–	–
2. Waykepayang	75,00	414,00	–	–
3. Kedondong	40,00	220,80	–	–
4. Sinar Harapan	60,00	331,20	–	–
5. Tempel Rejo	65,00	358,80	–	–
6. Pasar Baru	45,00	248,40	–	–
7. Kerta sana	50,00	276,00	–	–
8. Gunung Sugih	15,00	82,80	–	–
9. Babakan Loa	55,00	303,60	–	–
10. Pesawaran	5,00	27,60	–	–
11. Teba Jawa	45,00	248,40	–	–
12. Harapan Jaya	44,00	242,88	–	–
<b>Kecamatan Kedondong</b>	<b>549,00</b>	<b>3 030,48</b>	<b>–</b>	<b>–</b>

Lanjutan Tabel/*Continued Table 5.2.1*

Desa/Village	Kacang Tanah/Peanut		Ubi Kayu/Cassava	
	Luas Panen/ Harvest Area	Produksi/ Production	Luas Panen/ Harvest Area	Produksi/ Production
(1)	(10)	(11)	(12)	(13)
1. Sukamaju	4,00	5,04	11,50	299,23
2. Waykepayang	3,00	3,78	7,50	195,15
3. Kedondong	–	–	1,00	26,02
4. Sinar Harapan	9,00	11,34	10,50	273,21
5. Tempel Rejo	1,00	1,26	9,00	234,18
6. Pasar Baru	–	–	–	–
7. Kerta sana	–	–	–	–
8. Gunung Sugih	1,00	1,26	2,50	65,05
9. Babakan Loa	2,00	2,52	6,00	156,12
10. Pesawaran	5,00	6,30	4,50	117,09
11. Teba Jawa	2,00	2,52	2,00	52,04
12. Harapan Jaya	4,00	5,04	3,50	91,07
<b>Kecamatan Kedondong</b>	<b>31,00</b>	<b>39,06</b>	<b>58,00</b>	<b>1 509,16</b>

Lanjutan Tabel/Continued Table 5.2.1

Desa/Village	Ubi Jalar/Sweet Potato	
	Luas Panen/ Harvest Area	Produksi/Production
(1)	(14)	(15)
1. Sukamaju	5,50	105,27
2. Waykepayang	2,50	47,85
3. Kedondong	0,50	9,57
4. Sinar Harapan	5,50	105,27
5. Tempel Rejo	1,50	28,71
6. Pasar Baru	0,50	9,57
7. Kerta sana	0,50	9,57
8. Gunung Sugih	0,50	9,57
9. Babakan Loa	4,50	86,13
10. Pesawaran	3,50	66,99
11. Teba Jawa	–	–
12. Harapan Jaya	2,00	38,28
<b>Kecamatan Kedondong</b>	<b>27,00</b>	<b>516,78</b>

Sumber/Source: Dinas Pertanian dan Tanaman Pangan Kabupaten Pesawaran  
Agriculture and Food Crops Agency of Pesawaran Regency

### 5.3 HORTIKULTURA HORTICULTURE

**Tabel 5.3.1** Luas Panen Tanaman Sayuran dan Buah–Buahan Semusim menurut Jenis Tanaman di Kecamatan Kedondong , 2019–2022  
*Harvested Area of Seasonal Vegetables and Fruits by Kind of Plant in Kedondong Subdistrict, 2019–2022*

Jenis Tanaman <i>Kind of Plants</i>	Satuan <i>Unit</i>	2019	2020	2021	2022*
(1)	(2)	(3)	(4)	(5)	(6)
Bawang Daun/ <i>Scallion</i>	ha	–	–	–	–
Bawang Merah/ <i>Shallots</i>	ha	1	2	–	–
Bawang Putih/ <i>Garlic</i>	ha	–	–	–	–
Bayam/ <i>Spinach</i>	ha	25	17	14	15
Buncis/ <i>string bean</i>	ha	5	5	2	8
Cabai Besar/ TW/ Teropong/ <i>Chili/ Big chili</i>	ha	2	21	52	41
Cabai Keriting/ <i>Chili/ Curly chili</i>	ha	–	–	9	8
Cabai Rawit/ <i>Chili/ Cayenne Pepper</i>	ha	6	15	15	8
Jamur/ <i>Mushrooms</i>	m <sup>2</sup>	–	–	–	–
Kacang Panjang/ <i>Long Beans</i>	ha	11	8	34	8
Kangkung/ <i>Water Spinach</i>	ha	23	20	23	13
Kembang Kol/ <i>Cauliflower</i>	ha	–	–	–	–
Kentang/ <i>Potato</i>	ha	–	–	–	–
Ketimun/ <i>Cucumber</i>	ha	20	16	10	10
Kubis/ <i>Cabbage</i>	ha	–	–	–	–
Labu Siam/ <i>Chayote</i>	ha	–	–	–	–
Melon/ <i>Melon</i>	ha	–	–	–	–
Paprika/ <i>Bell Pepper</i>	ha	–	–	–	–
Petsai/ Sawi/ <i>Chinese Cabbage/ mustard green</i>	ha	–	–	–	–
Semangka/ <i>Water Melon</i>	ha	–	–	–	–
Stroberi/ <i>Strawberry</i>	ha	–	–	–	–
Terung/ <i>Eggplant</i>	ha	17	12	18	19
Tomat/ <i>Tomato</i>	ha	10	8	7	8
Wortel/ <i>Carrot</i>	ha	–	–	–	–

Catatan/Note: \*Angka Sementara (ASEM)/ *Preliminary Figures*

Sumber/Source: BPS, Statistik Pertanian Hortikultura SPH-SBS 2022

*BPS-Statistics Indonesia, Agricultural Statistic for Horticulture SPH-SBS 2022*



**Tabel**  
**Table** 5.3.2

**Produksi Tanaman Sayuran dan Buah–Buahan Semusim  
Menurut Jenis Tanaman di Kecamatan Kedondong, 2019–  
2022**  
*Production of Seasonal Vegetables and Fruits by Kind of  
Plant in Kedondong Subdistrict, 2019–2022*

Jenis Tanaman <i>Kind of Plants</i>	Satuan <i>Unit</i>	2019	2020	2021	2022*
(1)	(2)	(3)	(4)	(5)	(6)
Bawang Daun/ <i>Scallion</i>	kw/ qui	–	–	–	–
Bawang Merah/ <i>Shallots</i>	kw/ qui	50	36	–	–
Bawang Putih/ <i>Garlic</i>	kw/ qui	–	–	–	–
Bayam/ <i>Spinach</i>	kw/ qui	3 160	965	700	750
Buncis/ <i>string bean</i>	kw/ qui	315	375	475	720
Cabai Besar/ TW/ Teropong/ <i>Chili/ Big chili</i>	kw/ qui	100	210	2 191	2 775
Cabai Keriting/ <i>Chili/Curly chili</i>	kw/ qui	–	–	550	480
Cabai Rawit/ <i>Chili/Cayenne Pepper</i>	kw/ qui	385	150	522	450
Jamur/ <i>Mushrooms</i>	kg	–	–	–	–
Kacang Panjang/ <i>Long Beans</i>	kw/ qui	855	405	2 905	519
Kangkung/ <i>Water Spinach</i>	kw/ qui	2 675	1 080	1 125	625
Kembang Kol/ <i>Cauliflower</i>	kw/ qui	–	–	–	–
Kentang/ <i>Potato</i>	kw/ qui	–	–	–	–
Ketimun/ <i>Cucumber</i>	kw/ qui	2 020	1 280	2 600	1 975
Kubis/ <i>Cabbage</i>	kw/ qui	–	–	–	–
Labu Siam/ <i>Chayote</i>	kw/ qui	–	–	–	–
Melon/ <i>Melon</i>	kw/ qui	–	–	–	–
Paprika/ <i>Bell Pepper</i>	kw/ qui	–	–	–	–
Petsai/Sawi/ <i>Chinese Cabbage/mustard green</i>	kw/ qui	–	–	–	–
Semangka/ <i>Water Melon</i>	kw/ qui	–	–	–	–
Stroberi/ <i>Strawberry</i>	kw/ qui	–	–	–	–
Terung/ <i>Eggplant</i>	kw/ qui	2 065	845	1 050	855
Tomat/ <i>Tomato</i>	kw/ qui	950	250	350	373
Wortel/ <i>Carrot</i>	kw/ qui	–	–	–	–

Catatan/Note: \*Angka Sementara (ASEM)/ *Preliminary Figures*

Sumber/Source: BPS, Statistik Pertanian Hortikultura SPH-SBS 2022

*BPS-Statistics Indonesia, Agricultural Statistic for Horticulture SPH-SBS 2022*

**Tabel**  
**Table** 5.3.3**Luas Panen Tanaman Biofarmaka menurut Jenis Tanaman  
di Kecamatan Kedondong, 2019–2022**  
**Harvested Area of Medicinal Plants by Kind of Plant in  
Kedondong Subdistrict, 2019–2022**

Jenis Tanaman <i>Kind of Plants</i>	Satuan <i>Unit</i>	2019	2020	2021	2022*
(1)	(2)	(3)	(4)	(5)	(6)
Jahe/ <i>Ginger</i>	m <sup>2</sup>	2	–	–	1
Jeruk Nipis/ <i>Lime</i>	pohon/ <i>tree</i>	...	...	–	–
Kapulaga/ <i>Java Cardamom</i>	m <sup>2</sup>	–	–	–	–
Kencur/ <i>East Indian Galangal</i>	m <sup>2</sup>	2	–	–	1
Kunyit/ <i>Turmeric</i>	m <sup>2</sup>	2	–	–	2
Laos/Lengkuas/ <i>Galanga</i>	m <sup>2</sup>	–	–	–	2
Lempuyang/ <i>Zingiber Aromaticum</i>	m <sup>2</sup>	–	–	–	–
Lidah Buaya/ <i>Aloevera</i>	m <sup>2</sup>	–	–	–	–
Mahkota Dewa/ <i>Phaleria Macrocarpa</i>	pohon/ <i>tree</i>	–	–	–	–
Mengkudu/ <i>Pace/Indian Mulberry</i>	pohon/ <i>tree</i>	–	–	–	–
Sambiloto/ <i>King of Bitter</i>	m <sup>2</sup>	–	–	–	–
Serai/ <i>Lemongrass</i>	m <sup>2</sup>	...	...	–	3
Temuireng/ <i>Black Turmeric</i>	m <sup>2</sup>	–	–	–	–
Temukunci/ <i>Chinese Keys</i>	m <sup>2</sup>	–	–	–	–
Temulawak/ <i>Java Turmeric</i>	m <sup>2</sup>	–	–	–	1

Catatan/Note: \*Angka Sementara (ASEM)/ Preliminary Figures

Sumber/Source: BPS, Statistik Pertanian Hortikultura SPH-TBF 2022

BPS-Statistics Indonesia, Agricultural Statistic for Horticulture SPH-TBF 2022

**Tabel 5.3.4** **Produksi Tanaman Biofarmaka menurut Jenis Tanaman di Kecamatan Kedondong, 2019–2022**  
**Table 5.3.4** **Production of Medicinal Plants by Kind of Plant in Kedondong Subdistrict, 2019–2022**

Jenis Tanaman <i>Kind of Plants</i>	Satuan <i>Unit</i>	2019	2020	2021	2022*
(1)	(2)	(3)	(4)	(5)	(6)
Jahe/ <i>Ginger</i>	kg	24	–	–	4
Jeruk Nipis/ <i>Lime</i>	kg	...	...	–	–
Kapulaga/ <i>Java Cardamom</i>	kg	–	–	–	–
Kencur/ <i>East Indian Galangal</i>	kg	12	–	–	3
Kunyit/ <i>Turmeric</i>	kg	16	–	–	8
Laos/Lengkuas/ <i>Galanga</i>	kg	–	–	–	8
Lempuyang/ <i>Zingiber Aromaticum</i>	kg	–	–	–	–
Lidah Buaya/ <i>Aloevera</i>	kg	–	–	–	–
Mahkota Dewa/ <i>Phaleria Macrocarpa</i>	kg	–	–	–	–
Mengkudu/Pace/ <i>Indian Mulberry</i>	kg	–	–	–	–
Sambiloto/ <i>King of Bitter</i>	kg	–	–	–	–
Serai/ <i>Lemongrass</i>	kg	...	...	–	10
Temuireng/ <i>Black Turmeric</i>	kg	–	–	–	–
Temukunci/ <i>Chinese Keys</i>	kg	–	–	–	–
Temulawak/ <i>Java Turmeric</i>	kg	–	–	–	4

Catatan/Note: \*Angka Sementara (ASEM)/ Preliminary Figures

Sumber/Source: BPS, Statistik Pertanian Hortikultura SPH-TBF 2022

BPS-Statistics Indonesia, Agricultural Statistic for Horticulture SPH-TBF 2022

**Tabel**  
**Table** 5.3.5

**Luas Panen Tanaman Hias menurut Jenis Tanaman di  
Kecamatan Kedondong, 2019–2022**  
*Harvested Area of Ornamental Plants by Kind of Plant in  
Kedondong Subdistrict, 2019–2022*

Jenis Tanaman <i>Kind of Plants</i>	Satuan <i>Unit</i>	2019	2020	2021	2022*
(1)	(2)	(3)	(4)	(5)	(6)
Anggrek Pot/ <i>Orchid Potted Orchid</i>	m <sup>2</sup>	–	–	–	–
Anggrek Potong/Cut <i>Orchid</i>	m <sup>2</sup>	...	...	–	–
Anthurium Bunga/ <i>Flamingo Lily Flower</i>	m <sup>2</sup>	–	–	–	–
Anthurium Daun/ <i>Anthurium</i>	m <sup>2</sup>	–	–	...	...
Anyelir/ <i>Carnation</i>	m <sup>2</sup>	–	–	...	...
Balanceng/ <i>Dieffenbacia</i>	m <sup>2</sup>	–	–	...	...
Bromelia	m <sup>2</sup>	...	...	–	–
Bugenvil	m <sup>2</sup>	...	...	–	–
Dracaena/ <i>Dracaena</i>	m <sup>2</sup>	–	–	–	–
Euphorbia/ <i>Euphorbia</i>	m <sup>2</sup>	–	–	...	...
Gladiol	m <sup>2</sup>	–	–	...	...
Hanjuang/ <i>Cordyline</i>	m <sup>2</sup>	–	–	–	–
Herbras/ <i>Gerbera</i>	m <sup>2</sup>	–	–	–	–
Kamboja Jepang/ <i>Adenium</i>	m <sup>2</sup>	–	–	...	...
Keladi Hias/ <i>Caladium</i>	m <sup>2</sup>	–	–	...	...
Krisan/ <i>Chrysantemum</i>	m <sup>2</sup>	–	–	–	–
Mawar/ <i>Rose</i>	m <sup>2</sup>	–	–	–	–
Melati/ <i>Jasmine</i>	m <sup>2</sup>	–	–	–	–
Monstera/ <i>Monstera</i>	m <sup>2</sup>	–	–	...	...
Pakis/ <i>Leather Leaf Fern</i>	m <sup>2</sup>	–	–	–	–
Palem/ <i>Palm</i>	m <sup>2</sup>	–	–	–	–
Pedang-Pedangan/ <i>Sansevieria</i>	m <sup>2</sup>	–	–	–	–
Philodendron/ <i>Philodendron</i>	m <sup>2</sup>	–	–	–	–
Pisang-Pisangan/ <i>Heliconia</i>	m <sup>2</sup>	–	–	–	–
Puring/ <i>Croton</i>	m <sup>2</sup>	...	...	–	–
Sedap Malam/ <i>Tuberose</i>	m <sup>2</sup>	–	–	–	–
Soka/ <i>Ixora</i>	m <sup>2</sup>	–	–	–	–
Sri Rejeki/ <i>Aglaonema</i>	m <sup>2</sup>	–	–	–	–

Catatan/Note: \*Angka Sementara (ASEM)/ *Preliminary Figures*

Sumber/Source: BPS, Statistik Pertanian Hortikultura SPH-TH 2022

*BPS-Statistics Indonesia, Agricultural Statistic for Horticulture SPH-TH 2022*

**Tabel 5.3.6** **Produksi Tanaman Hias menurut Jenis Tanaman di Kecamatan Kedondong, 2019-2022**  
**Table 5.3.6** **Production of Ornamental Plants by Kind of Plant in Kedondong Subdistrict, 2019-2022**

Jenis Tanaman Kind of Plants	Satuan Unit	2019	2020	2021	2022*
(1)	(2)	(3)	(4)	(5)	(6)
Anggrek Pot/ <i>Orchid Potted Orchid</i>	pohon/tree	–	–	–	–
Anggrek Potong/Cut <i>Orchid</i>	tangkai/ stalks	...	...	–	–
Anthurium Bunga/ <i>Flamingo Lily Flower</i>	tangkai/ stalks	–	–	–	–
Anthurium Daun/ <i>Anthurium</i>	pohon/tree	–	–	...	...
Anyelir/ <i>Carnation</i>	tangkai/ stalks	–	–	...	...
Balanceng/ <i>Dieffenbacia</i>	pohon/tree	–	–	...	...
Bromelia	pohon/tree	...	...	–	–
Bugenvil	pohon/tree	...	...	–	–
Dracaena/ <i>Dracaena</i>	pohon/tree	–	–	–	–
Euphorbia/ <i>Euphorbia</i>	pohon/tree	–	–	...	...
Gladiol	tangkai/ stalks	–	–	...	...
Hanjuang/ <i>Cordyline</i>	pohon/tree	–	–	–	–
Herbras/ <i>Gerbera</i>	tangkai/ stalks	–	–	–	–
Kamboja Jepang/ <i>Adenium</i>	pohon/tree	–	–	...	...
Keladi Hias/ <i>Caladium</i>	pohon/tree	–	–	...	...
Krisan/ <i>Chrysantemum</i>	tangkai/ stalks	–	–	–	–
Mawar/ <i>Rose</i>	tangkai/ stalks	–	–	–	–
Melati/ <i>Jasmine</i>	kg	–	–	–	–
Monstera/ <i>Monstera</i>	pohon/tree	–	–	...	...
Pakis/ <i>Leather Leaf Fern</i>	pohon/tree	–	–	–	–
Palem/ <i>Palm</i>	pohon/tree	–	–	–	–
Pedang-Pedangan/ <i>Sansevieria</i>	rumpun/ clumps	–	–	–	–
Philodendron/ <i>Philodendron</i>	pohon/tree	–	–	–	–
Pisang-Pisangan/ <i>Heliconia</i>	tangkai/ stalks	–	–	–	–
Puring/ <i>Croton</i>	pohon/tree	...	...	–	–
Sedap Malam/ <i>Tuberose</i>	tangkai/ stalks	–	–	–	–
Soka/ <i>Ixora</i>	pohon/tree	–	–	–	–
Sri Rejeki/ <i>Aglaonema</i>	pohon/tree	–	–	–	–

Catatan/Note: \*Angka Sementara (ASEM)/ Preliminary Figures

Sumber/Source: BPS, Statistik Pertanian Hortikultura SPH-TH 2022

BPS-Statistics Indonesia, Agricultural Statistic for Horticulture SPH-TH 2022

**Tabel**  
**Table 5.3.7****Produksi Buah-Buahan dan Sayuran Tahunan menurut Jenis Tanaman di Kecamatan Kedondong, 2019–2022**  
**Production of Annual Fruits and Vegetables by Kind of Plant in Kedondong Subdistrict, 2019–2022**

Jenis Tanaman <i>Kind of Plants</i>	Satuan <i>Unit</i>	2019	2020	2021	2022*
(1)	(2)	(3)	(4)	(5)	(6)
Alpukat/ <i>Avocado</i>	kw/ qui	2 270	922	2 004	1 736
Anggur/ <i>Grape</i>	kw/ qui	–	–	–	20
Apel/ <i>Apple</i>	kw/ qui	–	–	–	–
Belimbing/ <i>Star Fruit</i>	kw/ qui	12	3	8	2
Buah naga/ <i>Dragon fruit</i>	kw/ qui	...	...	–	–
Duku/Langsat/Kokosan	kw/ qui	–	–	–	–
Durian	kw/ qui	–	–	598	2 392
Jambu Air/ <i>Water Apple</i>	kw/ qui	372	–	–	44
Jambu Biji/ <i>Guava</i>	kw/ qui	136	–	–	48
Jengkol	kw/ qui	1 168	–	–	29
Jeruk Besar/ <i>Pomelo</i>	kw/ qui	–	–	–	–
Jeruk Siam/Keprook/ <i>Orange/Tangerine</i>	kw/ qui	–	–	–	–
Lemon	kw/ qui	...	...	–	–
Lengkeng/ <i>Dimocarpus Longan</i>	kw/ qui	...	...	–	–
Mangga/ <i>Mango</i>	kw/ qui	7 623	979	536	1 118
Manggis/ <i>Mangosteen</i>	kw/ qui	276	25	–	35
Melinjo/ <i>Gnetum</i>	kw/ qui	1 040	–	–	74
Nangka/Cempedak/ <i>Jackfruit</i>	kw/ qui	492	246	53	106
Nenas/ <i>Pineapple</i>	kw/ qui	42	–	2	11
Pepaya/ <i>Papaya</i>	kw/ qui	461	12	48	48
Petai/ <i>Twisted Cluster Bean</i>	kw/ qui	2 654	311	–	37
Pisang/ <i>Banana</i>	kw/ qui	849 566	332 992	283 668	609 236
Rambutan	kw/ qui	26 596	14 284	83	166
Salak/ <i>Snakefruit</i>	kw/ qui	–	117	15	30
Sawo/ <i>Sapodilla</i>	kw/ qui	828	–	126	252
Sirsak/ <i>Soursop</i>	kw/ qui	176	3	18	48
Sukun/ <i>Breadfruit</i>	kw/ qui	4 332	–	–	53

Catatan/Note: \*Angka Sementara (ASEM)/ *Preliminary Figures*

Sumber/Source: BPS, Statistik Pertanian Hortikultura SPH-BST 2022

*BPS-Statistics Indonesia, Agricultural Statistic for Horticulture SPH-BST 2022*

**5.4 PERKEBUNAN  
ESTATE**

**Tabel 5.4.1 Luas Panen (ha) dan Produksi (ton) Tanaman Perkebunan menurut Jenis Tanaman di Kecamatan Kedondong, 2022**  
**Table 5.4.1 Harvest Area (ha) and Production (ton) of Estate Crops by Kind of Plant in Kedondong Subdistrict, 2022**

Desa/Village	Kelapa Sawit/Oil Palm		Kelapa/Coconut	
	Luas Panen/ Harvest Area	Produksi/ Production	Luas Panen/ Harvest Area	Produksi/ Production
(1)	(2)	(3)	(4)	(5)
1. Sukamaju	–	–	39,00	30,68
2. Waykepayang	–	–	16,00	12,59
3. Kedondong	–	–	31,00	24,39
4. Sinar Harapan	–	–	46,00	36,19
5. Tempel Rejo	–	–	46,00	36,19
6. Pasar Baru	–	–	16,00	12,59
7. Kerta sana	–	–	9,00	7,08
8. Gunung Sugih	–	–	32,00	25,18
9. Babakan Loa	–	–	20,00	15,74
10. Pesawaran	–	–	11,00	8,65
11. Teba Jawa	–	–	10,00	7,87
12. Harapan Jaya	–	–	–	–
<b>Kecamatan Kedondong</b>	<b>–</b>	<b>–</b>	<b>276,00</b>	<b>217,15</b>

Sumber/Source: Dinas Perkebunan dan Peternakan Kabupaten Pesawaran/Estate Crops and Livestock Agency of Pesawaran Regency

Lanjutan Tabel/*Continued Table* 5.4.1

Desa/Village	Karet/Rubber		Kopi/Coffee	
	Luas Panen/ Harvest Area	Produksi/ Production	Luas Panen/ Harvest Area	Produksi/ Production
(1)	(6)	(7)	(8)	(9)
1. Sukamaju	14,00	10,16	47,00	21,84
2. Waykepayang	5,00	3,63	11,00	5,11
3. Kedondong	–	–	11,00	5,11
4. Sinar Harapan	15,00	10,89	51,00	23,70
5. Tempel Rejo	38,00	27,59	36,00	16,73
6. Pasar Baru	–	–	11,00	5,11
7. Kerta sana	–	–	–	–
8. Gunung Sugih	11,00	5,08	8,00	3,72
9. Babakan Loa	21,00	15,27	13,00	6,04
10. Pesawaran	45,00	35,56	31,00	14,40
11. Teba Jawa	12,00	8,71	28,00	13,01
12. Harapan Jaya	–	–	–	–
<b>Kecamatan Kedondong</b>	<b>161,00</b>	<b>116,89</b>	<b>247,00</b>	<b>114,76</b>



Lanjutan Tabel/Continued Table 5.4.1

Desa/Village	Kakao/Cocoa		Tembakau/Tobacco	
	Luas Panen/ Harvest Area	Produksi/ Production	Luas Panen/ Harvest Area	Produksi/ Production
(1)	(10)	(11)	(12)	(13)
1. Sukamaju	582,00	698,98	–	–
2. Waykepayang	582,00	698,98	–	–
3. Kedondong	100,00	120,10	–	–
4. Sinar Harapan	563,00	676,16	1,00	0,93
5. Tempel Rejo	177,00	212,58	1,00	0,93
6. Pasar Baru	68,00	81,67	–	–
7. Kerta sana	5,00	6,01	–	–
8. Gunung Sugih	70,00	84,07	–	–
9. Babakan Loa	228,00	273,83	–	–
10. Pesawaran	189,00	226,99	–	–
11. Teba Jawa	582,00	698,98	–	–
12. Harapan Jaya	–	–	–	–
<b>Kecamatan Kedondong</b>	<b>3 146,00</b>	<b>3 778,35</b>	<b>2,00</b>	<b>1,85</b>

Sumber/Source: Dinas Perkebunan dan Peternakan Kabupaten Pesawaran/Estate Crops and Livestock Agency of Pesawaran Regency

## 5.5 PETERNAKAN LIVESTOCK

**Tabel** 5.5.1 **Populasi Ternak menurut Jenis Ternak dan Desa di Kecamatan Kedondong, 2022**  
*Livestock Population by Kind of Livestock and Villages in Kedondong Subdistrict, 2022*

Desa/Village	Sapi Potong/ Beef Cattle	Kerbau/ Buffalo	Komba/Domba/ Goat/Sheep	Babi/Pig
(1)	(2)	(3)	(4)	(5)
1. Sukamaju	8	3	265	–
2. Waykepayang	12	5	253	–
3. Kedondong	30	5	426	–
4. Sinar Harapan	2	3	324	–
5. Tempel Rejo	74	4	433	–
6. Pasar Baru	5	6	286	–
7. Kerta sana	6	3	278	–
8. Gunung Sugih	43	8	421	–
9. Babakan Loa	3	2	276	–
10. Pesawaran	7	3	328	–
11. Teba Jawa	5	6	338	–
12. Harapan Jaya	6	4	298	–
<b>Kecamatan Kedondong</b>	<b>201</b>	<b>52</b>	<b>3 926</b>	<b>–</b>

Sumber/Source: Dinas Perkebunan dan Peternakan Kabupaten Pesawaran/*Estate Crops and Livestock Agency of Pesawaran Regency*

**Tabel** 5.5.2 **Populasi Unggas menurut Jenis Unggas dan Desa di Kecamatan Kedondong, 2022**  
**Table** 5.5.2 **Poultry Population by Kind of Poultry and Villages in Kedondong Subdistrict, 2022**

Desa/Village	Ayam Pedaging/ Broiler	Ayam Petelur/ Layer	Itik/Itik Manila/ Duck/Muscovy Duck
(1)	(2)	(3)	(4)
1. Sukamaju	1 035	287	201
2. Waykepayang	987	298	359
3. Kedondong	3 657	306	289
4. Sinar Harapan	1 168	256	233
5. Tempel Rejo	2 976	624	298
6. Pasar Baru	897	229	298
7. Kerta sana	658	298	271
8. Gunung Sugih	498	315	287
9. Babakan Loa	654	367	276
10. Pesawaran	432	342	383
11. Teba Jawa	967	287	301
12. Harapan Jaya	1 023	212	328
<b>Kecamatan Kedondong</b>	<b>14 952</b>	<b>3 821</b>	<b>3 524</b>

Sumber/Source: Dinas Perkebunan dan Peternakan Kabupaten Pesawaran/Estate Crops and Livestock Agency of Pesawaran Regency

**Tabel**  
**Table** 5.5.3**Jumlah Pemotongan Ternak/Unggas Tercatat menurut Jenis Ternak/Unggas di Kecamatan Kedondong, 2022**  
**Number of Slaughters of Livestock/Poultry Recorded by Kind of Livestock/Poultry in Kedondong Subdistrict, 2022**

<b>Jenis Ternak/Unggas</b> <i>Kind of Livestock/Poultry</i>	<b>Jumlah Pemotongan Ternak/Unggas</b> <i>Number of Slaughters of Livestock/Poultry</i>
(1)	(2)
<b>Ternak/Livestock:</b>	
Sapi Potong/ <i>Beef Cattle</i>	115
Kerbau/ <i>Buffalo</i>	–
Kambing/Domba/ <i>Goat/Sheep</i>	149
Babi/ <i>Pig</i>	–
<b>Unggas/Poultry:</b>	
Ayam Pedaging/ <i>Broiler</i>	14 503
Ayam Petelur/ <i>Layer</i>	1 070
Itik/Itik Manila/ <i>Duck/Muscovy Duck</i>	2 035

Sumber/Source: Dinas Perkebunan dan Peternakan Kabupaten Pesawaran/*Estate Crops and Livestock Agency of Pesawaran Regency*

**Tabel** 5.5.4 **Produksi Daging dan Telur menurut Jenis Ternak/Unggas di Kecamatan Kedondong (kg), 2022**  
**Table** 5.5.4 **Flesh and Egg Production by Kind of Livestock/Poultry in Kedondong Subdistrict (kg), 2022**

Jenis Ternak/Unggas Kind of Livestock/Poultry	Produksi Daging Flesh Production	Produksi Telur Egg Production
(1)	(2)	(3)
<b>Ternak/Livestock:</b>		
Sapi Potong/Beef Cattle	22 653	
Kerbau/Buffalo	232	
Kambing/Domba/Goat/Sheep	5 098	
Babi/Pig	–	
<b>Unggas/Poultry:</b>		
Ayam Pedaging/Broiler	17 006	–
Ayam Petelur/Layer	1 326	29 169
Ayam Kampung/Native Chicken	–	28 896
Itik/Itik Manila/Duck/Muscovy Duck	2 127	17 056

Sumber/Source: Dinas Perkebunan dan Peternakan Kabupaten Pesawaran/Estate Crops and Livestock Agency of Pesawaran Regency



**ST 2023**

**BerAKHLAK**

Berorientasi Pelayanan Akuntabel Kompeten  
Harmonis Loyal Adaptif Kolaboratif

**DATA**  
**MENCERDASKAN BANGSA**  
*Enlighten The Nation*



**BADAN PUSAT STATISTIK  
KABUPATEN PESAWARAN**

*BPS-Statistics Pesawaran Regency*

Jl. Ahmad Yani No. 119, Gedong Tataan, Pesawaran, Lampung, 36366

Telp. 0721-94711, website: <https://pesawarankab.bps.go.id>

Email: [bps1809@bps.go.id](mailto:bps1809@bps.go.id), Whatsapp: 0811-602-1809

ISSN 2830-7321



9

772830

732000