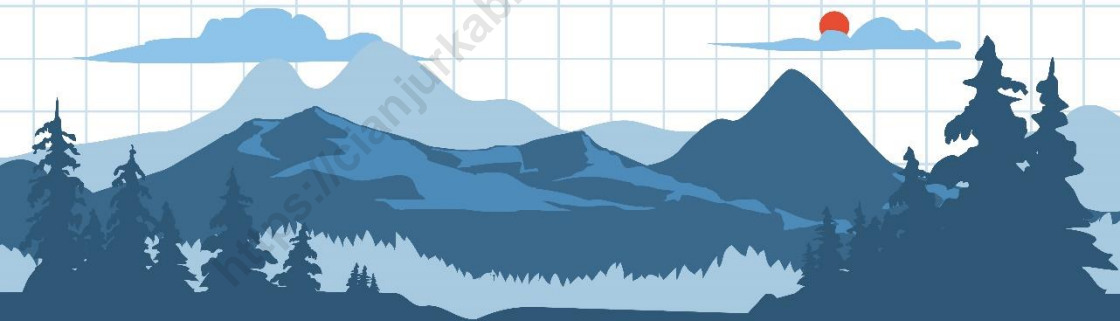
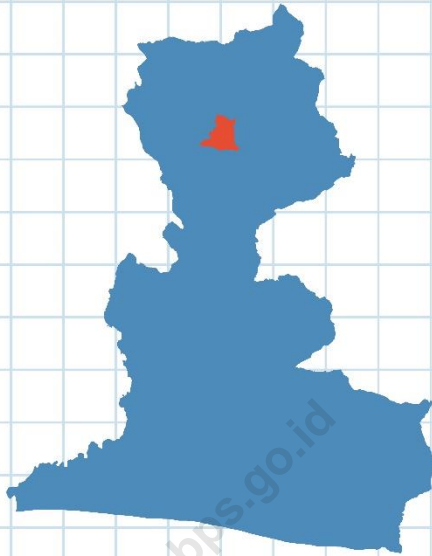


KATALOG/CATALOG: 1102001.3203200

KECAMATAN CIANJUR DALAM ANGKA

CIANJUR SUBDISTRICT IN FIGURES

2021

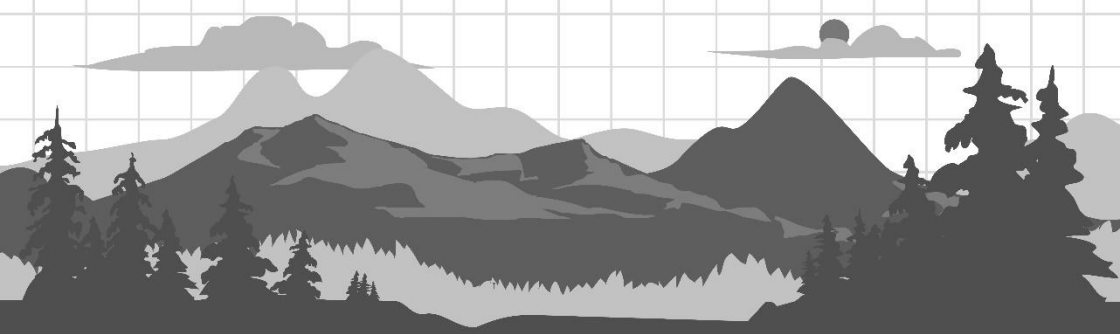
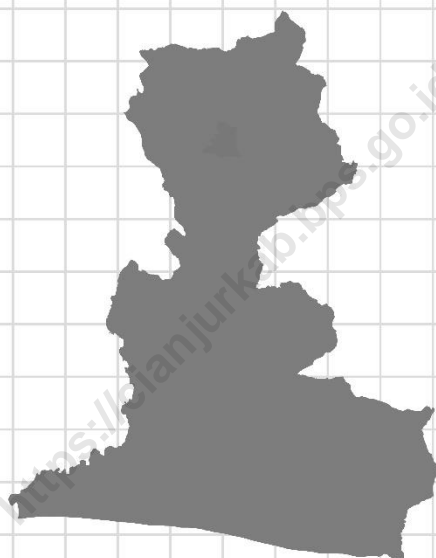


**BADAN PUSAT STATISTIK
KABUPATEN CIANJUR**

KECAMATAN CIANJUR DALAM ANGKA

CIANJUR SUBDISTRICT IN FIGURES

2021



Kecamatan Cianjur Dalam Angka
Cianjur Subdistrict in Figures
2021

ISSN:

No. Publikasi/Publication Number: 32030.2106

Katalog/Catalog: 1102001. 3203200

Ukuran Buku/Book Size: 14,8 cm x 21 cm

Jumlah Halaman/Number of Pages: xxii+88 halaman/pages

Naskah/Manuscript:

Koordinator Statistik Kecamatan Cianjur

Gambar Kover Oleh/Cover Designed by:

BPS Kabupaten Cianjur/BPS-Statistics of Cianjur Regency

Penerbit /Published by:

© BPS Kabupaten Cianjur/BPS-Statistics of Cianjur Regency

Pencetak/Printed by:

BPS Kabupaten Cianjur/BPS-Statistics of Cianjur Regency

Sumber Ilustrasi/Graphics by:

www.freepik.com

Dilarang mengumumkan, mendistribusikan, mengomunikasikan, dan/atau menggandakan sebagian atau seluruh isi buku ini untuk tujuan komersial tanpa izin tertulis dari Badan Pusat Statistik

Prohibited to announce, distribute, communicate, and/or copy part of all this book for commercial purpose without permission from BPS-Statistics Indonesia

Kecamatan Cianjur Dalam Angka
Cianjur *Subdistrict in Figures*
2021

Tim Penyusun/Drafting Team:

Pengarah/Director : Dani Jaelani, S.Si, M.T

**Koordinator Teknis/
Technical Coordinator** : Eman Sulaeman SE

Naskah/Manuscript : Triyono

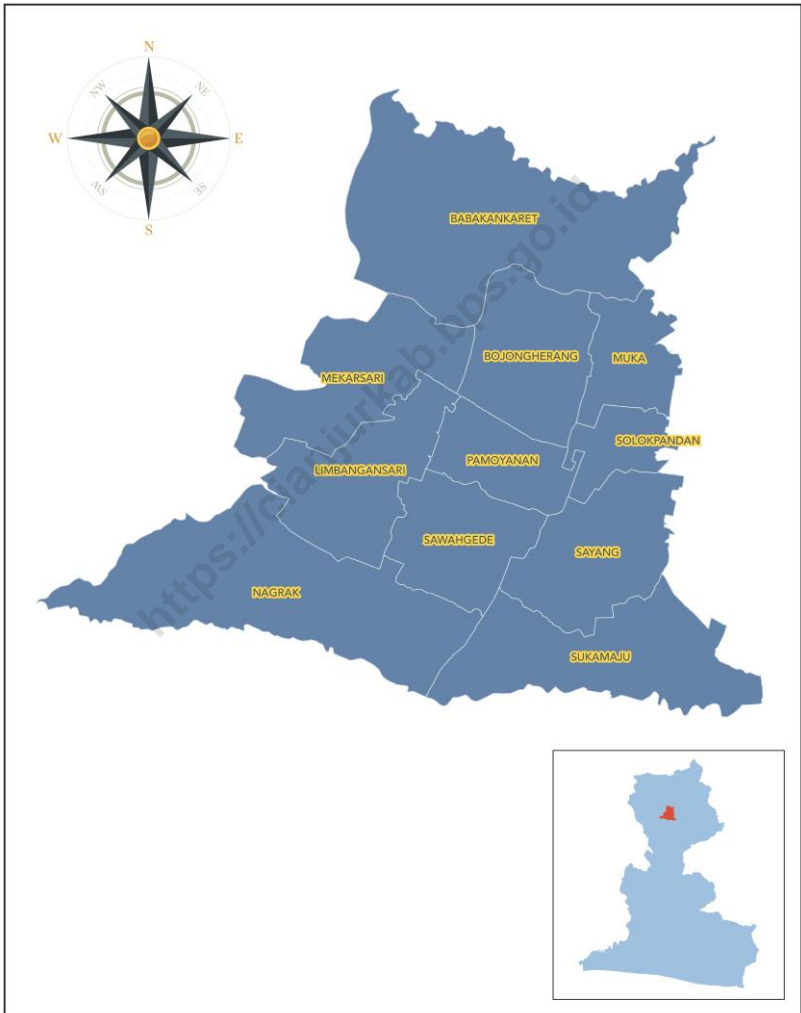
**Pengolah Data/
Data Processing** : Triyono

**Gambar Kover/
Cover Design** : 1. Eman Sulaeman SE
2. Bambang Dwi Putra Nugraha SST

**Penyunting/
Editor** : 1. Eman Sulaeman SE
2. Bambang Dwi Putra Nugraha SST

PETA WILAYAH KECAMATAN CIANJUR

MAP OF CIANJUR DISTRICT



KATA PENGANTAR

Kecamatan Cianjur Dalam Angka 2021 merupakan publikasi tahunan yang diterbitkan BPS Kabupaten Cianjur. Tabel-tabel yang disajikan sebagian merupakan data sekunder yaitu data yang diperoleh dari Dinas/Instansi/Lembaga dan perusahaan yang kegiatan atau lokasinya berada di wilayah Kecamatan Cianjur. Tabel-tabel lainnya diperoleh dari hasil kegiatan rutin dan hasil survei.

Dalam setiap penerbitan kami berusaha untuk meningkatkan kualitas serta kelengkapan data, agar dapat memenuhi kebutuhan pemakai data. Kami menyadari bahwa publikasi ini belum sepenuhnya memenuhi harapan pihak pemakai data, namun diharapkan dapat membantu melengkapi penyusunan rencana pembangunan di Kabupaten Cianjur.

Kami ucapkan terima kasih yang sebesar-besarnya kepada seluruh pihak yang telah membantu. Kritik dan saran dari pengguna publikasi ini sangat diharapkan untuk perbaikan pada penerbitan selanjutnya.

Cianjur, September 2021

Kepala BPS

Kabupaten Cianjur



Dani Jaelani, S.Si, M.T

PREFACE

Cianjur Subdistrict in Figures 2021 is an annual publication written by BPS-Statistics of Cianjur Regency. The presented tables are partially secondary data i.e data obtained from the Agency/Institution and companies whose activities or locations are located in the Subdistrict of Cianjur. Other tables were obtained from the results of routine activities and survey results.

In every publication we strive to improve the quality and completeness of data, in order to meet the needs of data users. We recognize that this publication has not fully fulfilled the expectations of the data users, but is expected to help complete the preparation of development plans in Cianjur Regency.

We express our gratitude to all parties who have helped. Criticisms and suggestions from users of this publication are highly expected for improvement in subsequent publications.

Cianjur, September 2021

Chief Statistician of

Cianjur Regency



Dani Jaelani, S.Si, M.T

DAFTAR ISI

	Halaman <i>Page</i>
Kata Pengantar/ <i>Preface</i>	vii
Daftar Isi/ <i>Contents</i>	xi
Daftar Tabel/ <i>List of Tables</i>	xiii
1. Geografi/ <i>Geography</i>	1
2. Pemerintahan/ <i>Government</i>	9
3. Penduduk dan Ketenagakerjaan/ <i>Population and Employment</i>	15
4. Sosial dan Kesejahteraan Rakyat/ <i>Social and Welfare</i>	29
5. Pertanian, Kehutanan, Peternakan dan Perikanan/ <i>Agriculture, Forestry, Livestock, and Fishery</i>	65
6. Industri/ <i>Industry</i>	73
7. Perdagangan/ <i>Trading</i>	77
8. Transportasi dan Pariwisata / <i>Transportation and Tourism</i>	79
9. Perekonomian/ <i>Economy</i>	83

DAFTAR TABEL

	Halaman	
	<i>Page</i>	
1. GEOGRAFI/GEOGRAPHY		
1.1	Luas dan Pembagian Wilayah Administrasi Menurut Desa di Kecamatan Cianjur, 2020 <i>Total Area and Distribution of Administration by Village in Cianjur Subdistrict, 2020</i>	2
1.2	Jarak Desa ke Ibukota Kecamatan, Ibukota Kabupaten, dan Ibukota Provinsi (km) di Kecamatan Cianjur, 2020 <i>Distance Village to the Capital Subdistrict, Capital Regency, and Capital Province (km) in Cianjur Subdistrict, 2020</i>	3
1.3	Nama-nama Sungai yang Melintasi Desa dan Nama-nama Gunung Menurut Desa di Kecamatan Cianjur, 2020 <i>The Names of River Crossing Village and The Names of Mountain in Cianjur Subdistrict, 2020</i>	4
1.4	Ketinggian Wilayah dan Posisi Setiap Desa di Kecamatan Cianjur, 2020 <i>Altitude Regions and Position Every Village in Cianjur Subdistrict, 2020</i>	5
1.5	Lokasi Setiap Desa Menurut Pantai dan Bukan Pantai di Kecamatan Cianjur, 2020 <i>Location of Every Village by Beach and Not Beach in Cianjur Subdistrict, 2020</i>	6
1.6	Status Setiap Desa Menurut Desa Tertinggal dan Berkembang di Kecamatan Cianjur, 2020 <i>Status Every Village by Underdeveloped Village and Developed Village in Cianjur Subdistrict, 2020</i>	7
2. PEMERINTAHAN/GOVERNMENT		
2.1	Status Pemerintahan Setiap Desa di Kecamatan Cianjur, 2020 <i>Status of Governance Every Village in Cianjur Subdistrict, 2020</i>	10
2.2	Klasifikasi Setiap Desa Menurut Tingkat Perkembangannya di Kecamatan Cianjur, 2020 <i>Classification Every Village by Progress in Cianjur Subdistrict, 2020</i>	11
2.3	Jumlah Aparat Desa Setiap Desa di Kecamatan Cianjur, 2020 <i>Number of Village Officials Every Village in Cianjur Subdistrict, 2020</i>	12
2.4	Nama, Umur, dan Pendidikan Kepala Desa Setiap Desa di Kecamatan Cianjur, 2020	

<i>Name, Age, and Education Village Head Every Village in Cianjur Subdistrict, 2020</i>	14
---	----

3. PENDUDUK DAN KETENAGAKERJAAN/ POPULATION AND EMPLOYMENT

3.1 PENDUDUK/POPULATION

3.1.1 Penduduk, Laju Pertumbuhan Penduduk, Distribusi Persentase Penduduk, Kepadatan Penduduk, Rasio Jenis Kelamin Menurut Desa/Kelurahan di Kecamatan Cianjur, 2020 <i>Population, Population Growth Rate, Percentage Distribution of Population, Population Density, and Sex Ratio by Village/Kelurahan in Cianjur Subdistrict, 2020</i>	16
3.1.2 Jumlah Penduduk Menurut Kelompok Umur dan Jenis Kelamin di Kecamatan Cijati, 2020 <i>Population by Age Group and Sex in Cijati Subdistrict, 2020</i>	18
3.1.3 Jumlah Keluarga, Jumlah Penduduk, dan Kepadatan Penduduk per Keluarga Menurut Desa di Kecamatan Cijati, 2020 <i>Number of Families, Population, and Population Density per Family By Village in Cijati District, 2020</i>	19
3.1.4 Jumlah Penduduk Menurut Desa, Jenis Kelamin, dan Rasio Jenis Kelamin di Kecamatan Cianjur, 2020 <i>Population by Village, Sex, and Sex Ratio in Cianjur Subdistrict, 2020</i>	20
3.1.5 Jumlah Kelahiran Penduduk Menurut Desa dan Jenis Kelamin Di Kecamatan Cianjur, 2020 <i>Fertility by Village and Sex Group in Cianjur Subdistrict, 2020</i>	21
3.1.6 Jumlah Kematian Penduduk Menurut Desa dan Jenis Kelamin di Kecamatan Cianjur, 2020 <i>Mortality by Village and Sex in Cianjur Subdistrict, 2020</i>	22
3.1.7 Migrasi Masuk Menurut Desa dan Jenis Kelamin di Kecamatan Cianjur, 2020 <i>In Migration by Village and Sex in Cianjur Subdistrict, 2020</i>	24
3.1.8 Migrasi Keluar Menurut Desa dan Jenis Kelamin di Kecamatan Cianjur, 2020 <i>Out Migration by Village and Sex in Cianjur Subdistrict, 2020</i>	25
3.1.9 Jumlah Penduduk Usia Sekolah Menurut Desa Dan Jenis Kelamin di Kecamatan Cianjur, 2020 <i>School Age Population by Village and Sex in Cianjur Subdistrict, 2020</i>	25

3.KETENAGAKERJAAN/EMPLOYMENT

3.2.1	Jumlah Penduduk Berumur 15 Tahun Keatas yang Bekerja Menurut Desa dan Jenis Pekerjaan di Kecamatan Cianjur, 2020 <i>Population Aged 15 Years and Over Who Worked By Village and The Type of Work in Cianjur Subdistrict, 2020</i>	26
3.2.2	Jumlah TKI Menurut Desa dan Jenis Kelamin di Kecamatan Cianjur, 2020 <i>Number of Indonesian Workers by Village and Sex In Cianjur Subdistrict, 2020</i>	27

4. SOSIAL DAN KESEJAHTERAAN RAKYAT/ SOCIAL AND WELFARE

4.1 PENDIDIKAN/EDUCATION

4.1.1	Jumlah Sekolah Menurut Desa dan Tingkat Pendidikan di Kecamatan Cianjur, 2020 <i>Number of Schools by Village and Education Level In Cianjur Subdistrict, 2020</i>	30
4.1.2	Jumlah Taman Kanak-Kanak (TK) dan Sekolah Dasar (SD) Menurut Desa dan Status Sekolah di Kecamatan Cianjur, 2020 <i>Number of Nursery Schools and Primary Schools By Village and School Status in Cianjur Subdistrict, 2020</i>	32
4.1.3	Jumlah Sekolah Lanjutan Tingkat Pertama (SLTP) dan Sekolah Lanjutan Tingkat Atas (SLTA) Menurut Desa dan Status Sekolah di Kecamatan Cianjur, 2020 <i>Number of Junior High Schools and Senior High Schools By Village and School Status in Cianjur Subdistrict, 2020</i>	33
4.1.4	Jumlah Madrasah Diniyah, Madrasah Ibtidaiyah, Madrasah Tsanawiyah, dan Madrasah Aliyah Menurut Desa di Kecamatan Cianjur, 2020 <i>Number of Madrasah Diniyah, Madrasah Ibtidaiyah, Madrasah Tsanawiyah, And Madrasah Aliyah by Village in Cianjur Subdistrict, 2020</i>	35
4.1.5	Jumlah Murid Taman Kanak-Kanak (TK) dan Sekolah Dasar (SD) Menurut Desa dan Status Sekolah di Kecamatan Cianjur, 2020 <i>Number of Students Nursery Schools and Primary Schools By Village and School Status in Cianjur Subdistrict, 2020</i>	36
4.1.6	Jumlah Murid Sekolah Lanjutan Tingkat Pertama (SLTP) dan Sekolah Lanjutan Tingkat Atas (SLTA) Menurut Desa dan Status Sekolah di Kecamatan Cianjur, 2020 <i>Number of Students Junior High Schools and Senior High Schools by Village and School Status In Cianjur Subdistrict, 2020</i>	37
4.1.7	Jumlah Murid Madrasah Diniyah dan Ibtidaiyah Menurut Desa dan Status Sekolah di Kecamatan Cianjur, 2020	

	<i>Number of Students Madrasah Diniyah and Ibtidaiyah By Village and School Status in Cianjur Subdistrict, 2020.....</i>	39
4.1.8	Jumlah Murid Madrasah Tsanawiyah dan Aliyah Menurut Desa dan Status Sekolah di Kecamatan Cianjur, 2020 <i>Number of Students Madrasah Tsanawiyah and Aliyah By Village and School Status in Cianjur Subdistrict, 2020.....</i>	40
4.1.9	Jumlah Guru Taman Kanak-Kanak (TK) dan Sekolah Dasar (SD) Menurut Desa dan Status Sekolah di Kecamatan Cianjur, 2020 <i>Number of Teachers Nursery Schools and Primary Schools By Village and School Status in Cianjur Subdistrict, 2020.....</i>	41
4.1.10	Jumlah Guru Sekolah Lanjutan Tingkat Pertama (SLTP) dan Sekolah Lanjutan Tingkat Atas (SLTA) Menurut Desa dan Status Sekolah di Kecamatan Cianjur, 2020 <i>Number of Teachers Junior High Schools and Senior High Schools by Village and School Status In Cianjur Subdistrict, 2020</i>	42
4.1.11	Jumlah Guru Madrasah Diniyah dan Ibtidaiyah Menurut Desa dan Status Sekolah di Kecamatan Cianjur, 2020 <i>Number of Teachers Madrasah Diniyah and Ibtidaiyah By Village and School Status in Cianjur Subdistrict, 2020.....</i>	44
4.1.12	Jumlah Guru Madrasah Tsanawiyah dan Aliyah Menurut Desa dan Status Sekolah di Kecamatan Cianjur, 2020 <i>Number of Teachers Madrasah Tsanawiyah and Aliyah By Village and School Status in Cianjur Subdistrict, 2020.....</i>	45
4.2	KESEHATAN/HEALTH	
4.2.1	Jumlah Sarana Kesehatan Menurut Desa dan Jenisnya di Kecamatan Cianjur, 2020 <i>Number of Health Facilities by Village and Type of Health Facilities In Cianjur Subdistrict, 2020</i>	46
4.2.2	Jumlah Tenaga Kesehatan yang Tinggal/Menetap di Desa Menurut Desa dan Jenisnya di Kecamatan Cianjur, 2020 <i>Number of Health Workers Who Settled in The Village by Village And Type of Health Workers in Cianjur Subdistrict, 2020... ..</i>	48
4.2.3	Jarak Setiap Desa ke Sarana Kesehatan Terdekat Menurut Jenisnya di Kecamatan Cianjur, 2020 <i>Distance Every Village to Health Facilities by Type of Health Facilities In Cianjur Subdistrict, 2020</i>	49
4.2.4	Jumlah Dukun Bayi Menurut Desa dan Keahliannya di Kecamatan Cianjur, 2020 <i>Number of Traditional Birth Attendants by Village and Expertise In Cianjur Subdistrict, 2020</i>	50

4.3	KELUARGA BERENCANA/FAMILY PLANNING	
4.3.1	Jumlah Pasangan Usia Subur (PUS) dan Peserta KB Aktif Menurut Desa dan Jenis Kontrasepsi di Kecamatan Cianjur, 2020 <i>Number of Spouses of Fertile Age (EFA) and Family Planning Participants By Village and Type of Contraception in Cianjur Subdistrict, 2020</i>	51
4.3.2	Jumlah Pasangan Usia Subur (PUS), peserta KB Aktif, dan Prevalensi Pemakaian Kontrasepsi (CPR) Menurut Desa dan Jenis Kontrasepsi di Kecamatan Cianjur, 2020 <i>Number of Spouses of Fertile Age (EFA), Family Planning Participants, and Contraceptive Prevalence Rate (CPR) by Village and Type of Contraception in Cianjur Subdistrict, 2020</i>	53
4.4.	PERUMAHAN DAN LINGKUNGAN HIDUP/HOUSING AND ENVIRONMENT	
4.4.1	Tempat Pembuangan Sampah Sebagian Besar Keluarga Menurut Desa di Kecamatan Cianjur, 2020 <i>Place of Trash Disposal Mostly Families by Village In Cianjur Subdistrict, 2020</i>	54
4.4.2	Fasilitas Tempat Buang Air Besar Sebagian Besar Keluarga Menurut Desa di Kecamatan Cianjur, 2020 <i>Toilet Facilities Mostly Families by Village in Cianjur Subdistrict, 2020</i>	55
4.4.3	Jumlah Keluarga Pengguna Listrik Menurut Desa di Kecamatan Cianjur, 2020 <i>Number of Family Power Users by Village in Cianjur Subdistrict, 2020</i>	56
4.4.4	Bahan Bakar yang Digunakan Oleh Sebagian Besar Keluarga Menurut Desa di Kecamatan Cianjur, 2020 <i>Fuel Used Mostly Families by Village in Cianjur Subdistrict, 2020</i>	57
4.4.5	Jumlah Permukiman, Bangunan, dan Keluarga di Bantaran Sungai Menurut Desa di Kecamatan Cianjur, 2020 <i>Number of Settlement, Building, and Family in The River Plate by Village In Cianjur Subdistrict, 2020</i>	58
4.4.6	Jumlah Pengguna Air Minum Menurut Desa dan Sumber Air Minum di Kecamatan Cianjur, 2020 <i>Number of Users of Water by Village and Water Resources In Cianjur Subdistrict, 2020</i>	59
4.5	SOSIAL LAINNYA/OTHER SOCIAL	
4.5.1	Jumlah Penyandang Cacat Menurut Desa di Kecamatan Cianjur, 2020 <i>Number of People with Disabilities by Village In Subdistrict Cianjur, 2020</i>	61
4.5.2	Jumlah Sarana Peribadatan Menurut Desa di Kecamatan Cianjur, 2020 <i>Number of Worship Place by Village in Cianjur Subdistrict, 2020</i>	62
4.5.3	Jumlah Sarana Olahraga Menurut Desa di Kecamatan Cianjur, 2020 <i>Number of Sports Facilities by Village in Cianjur Subdistrict, 2020</i>	63

4.5.4	Jumlah Kelompok Olahraga Menurut Desa di Kecamatan Cianjur, 2020 <i>Number of Sports Group by Village in Cianjur Subdistrict, 2020</i>	64
-------	---	----

5. Pertanian, Kehutanan, Peternakan dan Perikanan/Agriculture, Forestry, Livestock, and Fishery

5.1	Luas Lahan (ha) Menurut Desa dan Penggunaan di Kecamatan Cianjur, 2020 <i>Land Area (ha) by Village and Utilization in Cianjur Subdistrict, 2020</i>	66
5.2	Luas Lahan Sawah Menurut Desa dan Jenis Irigasi di Kecamatan Cianjur, 2020 <i>Wetland Area by Village and Type of Irrigation In Cianjur Subdistrict, 2020</i>	67
5.3	Produksi Padi Menurut Desa dan Jenis Padi di Kecamatan Cianjur, 2020 <i>Production of Paddy by Village and Type of Paddy In Cianjur Subdistrict, 2020</i>	68
5.4	Jumlah Sarana Pertanian Menurut Desa di Kecamatan Cianjur, 2020 <i>Number of Agriculture Facilities by Village in Cianjur Subdistrict, 2020</i>	70
5.5	Jumlah Unggas Menurut Desa di Kecamatan Cianjur, 2020 <i>Number of Poultry by Village in Cianjur Subdistrict, 2020</i>	71
5.6	Jumlah Ternak Menurut Desa di Kecamatan Cianjur, 2020 <i>Number of Livestock by Village in Cianjur Subdistrict, 2020</i>	72

6. INDUSTRI/INDUSTRY

6.1	Jumlah Perusahaan Industri Mikro dan Kecil Menurut Desa dan Jenis Industri di Kecamatan Cianjur, 2020 <i>Number of Micro and Small Manufacturing Industry by Village And Type of Industry in Cianjur Subdistrict, 2020</i>	74
-----	---	----

7. PERDAGANGAN/TRADING

7.1	Jumlah Pasar, Minimarket, Toko, dan Warung Menurut Desa di Kecamatan Cianjur, 2020 <i>Number of Markets, Minimarket, Stores, and Shops by Village In Cianjur Subdistrict, 2020</i>	78
-----	---	----

8. TRANSPORTASI DAN PARIWISATA/TRANSPORTATION AND TOURISM

8.1.1	Jumlah Sarana Angkutan Menurut Desa dan Jenis Angkutan Menurut Desa di Kecamatan Cianjur, 2020 <i>Number of Transportation Facilities by Village and Type of Transportation By Village in Cianjur Subdistrict, 2020</i>	80
-------	--	----

8.1.2	Jumlah Pengemudi Menurut Desa dan Jenis Angkutan di Kecamatan Cianjur, 2020 <i>Number of Driver by Village and Type of Transportation In Cianjur Subdistrict, 2020</i>	81
8.1.3	Jumlah Restoran, Hotel dan Penginapan Menurut Desa di Kecamatan Cianjur, 2020 Number of Restoran, Hotel, and Lodging by Village In Cianjur Subdistrict, 2020	82

9. KEUANGAN/FINANCE

9.1	Jumlah Koperasi yang Masih Aktif Menurut Desa di Kecamatan Cianjur, 2020 <i>Number of Cooperation Still Active by Village In Cianjur Subdistrict, 2020</i>	84
9.2	Jumlah Bank Umum dan Bank Perkreditan Rakyat (BPR) Menurut Desa di Kecamatan Cianjur, 2020 <i>Number of Commercial Bank and Rural Banks (BPR) by Village In Cianjur Subdistrict, 2020</i>	85
9.3	Target dan Realisasi Pajak Bumi dan Bangunan Menurut Desa di Kecamatan Cianjur, 2020 <i>Target and Realization of Land and Building Tax by Village In Cianjur Subdistrict, 2020</i>	86
9.4	Jumlah Wajib Pajak dan Wajib Pajak Terbayar Menurut Desa di Kecamatan Cianjur, 2020 <i>Number of Taxpayers and Taxpayer Repaid by Village In Cianjur Subdistrict, 2020</i>	87

<https://cianjurkab.bps.go.id>



01

GEOGRAFI
GEOGRAPHY

<https://ianjuridab.bps.go.id>

Geography

Tabel
Table 1.1

**Luas dan Pembagian Wilayah Administrasi
Menurut Desa di Kecamatan Cianjur, 2020
Total Area and Distribution of Administration
by Village in Cianjur Subdistrict, 2020**

	Desa Village	Luas Wilayah (ha) Total Area	Jumlah Dusun Number of Hamlets	Jumlah RW Number of Community Association	Jumlah RT Number of Neighbourhood Association
	(1)	(2)	(3)	(4)	(5)
1.	Nagrak	422	4	17	51
2.	Sukamaju	315,346	3	11	35
3.	Sayang	182,40	0	22	98
4.	Solokpandan	66,035	0	16	54
5.	Muka	212,023	0	23	68
6.	Bojongherang	198,675	0	22	76
7.	Pamoyanan	92,358	0	22	61
8.	Sawahgede	114,25	0	16	54
9.	Limbangansari	223,77	4	15	35
10.	Mekarsari	298,260	4	10	33
11.	Babankaret	500,270	5	12	36
	Jumlah/Total	1705,641	20	186	601

Sumber/Source: Profil Desa/Village Profile/Village Profile

Tabel
Table 1.2

**Jarak Desa ke Ibukota Kecamatan,
Ibukota Kabupaten, dan Ibukota Provinsi (km)
di Kecamatan Cianjur, 2020**
*Distance Village to the Capital Subdistrict,
Capital Regency, and Capital Province (km)
in Cianjur Subdistrict, 2020*

Desa Village	Jarak ke (km) Distance to		
	Ibukota Kecamatan Capital Subdistrict	Ibukota Kabupaten Capital Regency	Ibukota Provinsi Capital Province
(1)	(2)	(3)	(4)
1. Nagrak	4,2	4,9	67,3
2. Sukamaju	2	2,5	60
3. Sayang	1,6	2,1	70,6
4. Solokpandan	2,20	2	26,22
5. Muka	1	1	60
6. Bojongherang	1	1	64
7. Pamoyanan	0,5	1	65
8. Sawahgede	0,5	1	68
9. Limbangsari	2,5	2,5	60
10. Mekarsari	3	3,2	70
11. Babakankaret	2	2	65

Sumber/Source: Profil Desa/Village Profile/Village Profile

Geography

Tabel
Table 1.3

**Nama-nama Sungai yang Melintasi Desa
dan Nama-nama Gunung Menurut Desa
di Kecamatan Cianjur, 2020**
*The Names of River Crossing Village
and The Names of Mountain
in Cianjur Subdistrict, 2020*

Desa Village	Nama Sungai Names of River	Nama Gunung Names of Mountain
(1)	(2)	(3)
1. Nagrak	Cikukulu, Cikaret, Cisarua, Cilaku	-
2. Sukamaju	Cikukulu, Cikaret, Cisarua	-
3. Sayang	Cianjur, Cikukulu, Cikaret, Cisarua	-
4. Solokpandan	Cibalu	-
5. Muka	Cibalu, Cimenteng, Cibalagung	-
6. Bojongherang	Cikukulu, Cibalu, Cibalagung	-
7. Pamoyanan	Cikukulu Besar, Cikukulu Kecil, Ciraden	-
8. Sawahgede	Cikaret, Cisarua, Cikukulu	-
9. Limbangansari	Cianjur, Ciraden, Cikukulu	-
10. Mekarsari	Cianjur, Ciraden, Cikukulu	-
11. Babakankaret	Cimenteng, Ciserpong, Cibeureum	-

Sumber/Source: Profil Desa/Village Profile/Village Profile

Tabel 1.4 **Ketinggian Wilayah dan Posisi Setiap Desa di Kecamatan Cianjur, 2020**
Altitude Regions and Position Every Village in Cianjur Subdistrict, 2020

Desa <i>Village</i>	Ketinggian Wilayah (m) <i>Altitude Regions (m)</i>	Posisi Sebagian Besar Desa <i>Position Mostly Village</i>			
		Puncak <i>Peak</i>	Lereng <i>Slope</i>	Lembah <i>Valley</i>	Hampanan <i>Expanse</i>
(1)	(2)	(3)	(4)	(5)	(6)
1. Nagrak	325	-	-	-	✓
2. Sukamaju	442	-	-	-	✓
3. Sayang	472	-	-	-	✓
4. Solokpandan	454	-	-	-	✓
5. Muka	461	-	-	-	✓
6. Bojongherang	452	-	-	-	✓
7. Pamoyanan	477	-	-	-	✓
8. Sawahgede	488	-	-	-	✓
9. Limbangansari	534	-	-	-	✓
10. Mekarsari	523	-	-	-	✓
11. Babakankaret	524	-	-	-	✓
Jumlah/Total	392	-	-	-	11

Sumber/Source: Profil Desa/Village Profile/Village Profile

Geography

Tabel
Table

1.5

**Lokasi Setiap Desa Menurut Pantai dan Bukan Pantai
di Kecamatan Cianjur, 2020**
*Location of Every Village by Beach and Non Beach
in Cianjur Subdistrict, 2020*

Desa Village	Pantai Beach	Bukan Pantai Non Beach
(1)	(2)	(3)
1. Nagrak	-	✓
2. Sukamaju	-	✓
3. Sayang	-	✓
4. Solokpandan	-	✓
5. Muka	-	✓
6. Bojongherang	-	✓
7. Pamoyanan	-	✓
8. Sawahgede	-	✓
9. Limbangsari	-	✓
10. Mekarsari	-	✓
11. Babakankaret	-	✓
Jumlah/Total	-	11

Sumber/Source: Profil Desa/Village Profile/Village Profile

Tabel
Table

1.6

Status Setiap Desa Menurut Desa Tertinggal dan Berkembang di Kecamatan Cianjur, 2020
Status Every Village by Underdeveloped Village and Developed Village in Cianjur Subdistrict, 2020

Desa Village	Desa Tertinggal Underdeveloped Village	Desa Berkembang Developed Village
(1)	(2)	(3)
1. Nagrak	-	✓
2. Sukamaju	-	✓
3. Sayang	-	✓
4. Solokpandan	-	✓
5. Muka	-	✓
6. Bojongherang	-	✓
7. Pamoyanan	-	✓
8. Sawahgede	-	✓
9. Limbangansari	-	✓
10. Mekarsari	-	✓
11. Babakankaret	-	✓
Jumlah/Total	-	11

Sumber/Source: Profil Desa/Village Profile/Village Profile

<https://cianjurkab.bps.go.id>



02

PEMERINTAHAN
GOVERNMENT



Government

Tabel 2.1 Status Pemerintahan Setiap Desa di Kecamatan Cianjur, 2020
Status of Governance Every Village in Cianjur Subdistrict, 2020

Desa Village	Status Pemerintahan <i>Status of Governance</i>	
	Desa Village	Kelurahan Urban Village
(1)	(2)	(3)
1. Nagrak	1	-
2. Sukamaju	1	-
3. Sayang	-	1
4. Solokpandan	-	1
5. Muka	-	1
6. Bojongherang	-	1
7. Pamoyanan	-	1
8. Sawahgede	-	1
9. Limbangsari	1	-
10. Mekarsari	1	-
11. Babakankaret	1	-
Jumlah/Total	5	6

Sumber/Source: Profil Desa/Village Profile/Village Profile

Tabel
Table

2.2

**Klasifikasi Setiap Desa Menurut Tingkat
Perkembangannya di Kecamatan Cianjur, 2020**
*Classification Every Village by Progress
in Cianjur Subdistrict, 2020*

Desa Village	Tingkat Perkembangan Level of Development		
	Swadaya Swadaya	Swakarya Swakarya	Swasembada Swasembada
(1)	(2)	(3)	(4)
1. Nagrak	-	-	-
2. Sukamaju	-	1	-
3. Sayang	-	-	1
4. Solokpandan	-	-	1
5. Muka	-	-	1
6. Bojongherang	-	-	1
7. Pamoyanan	1	-	-
8. Sawahgede	-	-	1
9. Limbangansari	-	-	-
10. Mekarsari	-	1	-
11. Babakankaret	-	1	-
Jumlah/Total	1	3	5

Sumber/Source: Profil Desa/Village Profile/Village Profile

Government

Tabel 2.3 **Jumlah Aparat Desa Setiap Desa di Kecamatan Cianjur, 2020**
Table 2.3 **Number of Village Officials Every Village in Cianjur Subdistrict, 2020**

Desa Village	Aparat Desa Village Officials				
	Kepala Desa Village Head	Sekretaris Desa Village Secretary	Kasi Pemerintahan Head of Government	Kasi Kesra Head of Development	Kasi Pelayan an Head of The People's Welfare
(1)	(2)	(3)	(4)	(5)	(6)
1. Nagrak	1	1	1	1	1
2. Sukamaju	1	1	1	1	1
3. Sayang	1	1	1	1	1
4. Solokpandan	1	1	1	1	1
5. Muka	1	1	1	1	1
6. Bojongherang	1	1	1	1	1
7. Pamoyanan	1	1	1	1	1
8. Sawahgede	1	1	1	1	1
9. Limbangsari	1	1	1	1	1
10. Mekarsari	1	1	1	1	1
11. Babakankaret	1	1	1	1	1
Jumlah/Total	11	11	11	11	11

Sumber/Source: Profil Desa/Village Profile/Village Profile

Lanjutan Tabel/*Continued Table 2.3*

Desa <i>Village</i>	Aparat Desa <i>Village Officials</i>			
	Bendahara <i>Head of Finace</i>	Staf Desa <i>Village Staff</i>	Kadus <i>Head of Hamlet</i>	Jumlah <i>Total</i>
(1)	(7)	(8)	(9)	(10)
1. Nagrak	1	1	4	10
2. Sukamaju	1	1	3	10
3. Sayang	1	23	0	29
4. Solokpandan	1	13	0	19
5. Muka	1	23	0	29
6. Bojongherang	1	18	0	24
7. Pamoyanan	1	28	0	24
8. Sawahgede	1	11	0	17
9. Limbangsari	1	1	3	10
10. Mekarsari	1	3	4	13
11. Babakankaret	1	2	5	13
Jumlah/Total	11	124	19	198

Sumber/*Source*: Profil Desa/*Village Profile/Village Profile*

Government

Tabel 2.4 **Nama, Umur, dan Pendidikan Kepala Desa Setiap Desa di Kecamatan Cianjur, 2020**
Name, Age, and Education Village Head Every Village in Cianjur Subdistrict, 2020

	Desa Village	Nama Name	Umur (Tahun) Age (Year)	Pendidikan Education			
				SLTP Junior High Schools	SLTA Senior High Schools	Diploma Diploma	Sarjana Scholar
	(1)	(2)	(3)	(4)	(5)	(6)	(7)
1.	Nagrak	Hendi Saepul Maladi, SH		-	-	-	1
2.	Sukamaju	Supardi S		-	1	-	-
3.	Sayang	Syahdan Firmansyah, S.IP, MM		-	-	-	1
4.	Solokpandan	Nandang Widan, S.IP, MM		-	-	-	1
5.	Muka	Sofyan Sauri S. Sos		-	-	-	1
6.	Bojongherang	Dudu Abdu Rajab S.IP		-	-	-	1
7.	Pamoyanan	M Dadan Asikin, SH		-	-	-	1
8.	Sawahgede	Dewi Sartika, SIP.MSI		-	-	-	1
9.	Limbangansari	Akhmad Sudrajat		-	1	-	-
10.	Mekarsari	Ujang Rahmat, S.Pd		-	-	-	1
11.	Babakankaret	Isep Solihin, S.Sos		-	-	-	1

Sumber/Source: Profil Desa/Village Profile/Village Profile



03

PENDUDUK DAN KETANAGAKERJAAN
POPULATION AND EMPLOYMENT

Population and Employment

3.1 PENDUDUK POPULATION

Tabel 3.1.1 Penduduk, Laju Pertumbuhan Penduduk, Distribusi Persentase Penduduk, Kepadatan Penduduk, Rasio Jenis Kelamin Menurut Desa/Kelurahan di Kecamatan Cianjur, 2020
Population, Population Growth Rate, Percentage Distribution of Population, Population Density, and Sex Ratio by Village/Kelurahan in Cianjur Subdistrict, 2020

Desa/Kelurahan <i>Village/Kelurahan</i>	Penduduk (ribu) ¹ <i>Population (thousand)¹</i>	Laju Pertumbuhan Penduduk per Tahun 2010-2020 ^{2,3} <i>Annual Growth Rate of Population (%) 2010-2020^{2,3}</i>
(1)	(2)	(3)
1. Nagrak	16,610	0,89
2. Sukamaju	10,205	2,39
3. Sayang	36,152	2,1
4. Solokpandan	11,533	0,54
5. Muka	18,844	-0,51
6. Bojongherang	16,408	-0,01
7. Pamoyanan	14,458	0,09
8. Sawahgede	15,525	-0,08
9. Limbangansari	11,260	1,16
10. Mekarsari	12,468	2,44
11. Babakankaret	9,802	1,96
Jumlah/Total	173,265	1,9

Penduduk dan Ketenagakerjaan

Lanjutan Tabel/*Continued Table 3.1.1*

Desa <i>Village</i>	Persentase Penduduk <i>Percentage of Total Population</i>	Kepadatan Penduduk (per km^2) ⁴ <i>Population Density per sq.km⁴</i>
(1)	(3)	(4)
1. Nagrak	9.59	3.936
2. Sukamaju	5.89	3.240
3. Sayang	20.86	19.863
4. Solokpandan	6.66	17.474
5. Muka	10.87	20.937
6. Bojongherang	9.48	8.245
7. Pamoyanan	8.34	15.715
8. Sawahgede	8.96	10.781
9. Limbangansari	6.5	4.960
10. Mekarsari	7.2	4.183
11. Babakankaret	5.66	1.960
Jumlah/Total	100	7.069

Catatan/Note: ¹ Hasil SP2020 (September)/ *The result of the 2020 Population Census (September)*
² Laju pertumbuhan penduduk dihitung berdasarkan penduduk hasil SP2010 dengan kondisi desa/kelurahan tahun 2020, dibandingkan dengan penduduk hasil SP2020/ *The growth rate refers to the change of population resulting from 2010 Population census with villages/kelurahan conditions in 2020 population resulting from 2020 Population Census*
³ Laju pertumbuhan penduduk terlalu tinggi atau negative karena adanya perubahan wilayah pada desa/kelurahan antara SP2010 dan SP2020/ *The growth rate is too high or negative due to changes in the area of the village/kelurahan between SP2010 and SP2020*
⁴ Luas desa/kelurahan berdasarkan Profil Desa/Village Profile/ *Village/Kelurahan are based on village profile*

Population and Employment

Tabel 3.1.2 **Jumlah Penduduk Menurut Kelompok Umur dan Jenis Kelamin di Kecamatan Cianjur, 2020**
Table **Population by Age Group and Sex in Cianjur Subdistrict, 2020**

Kelompok Umur <i>Age Group</i>	Jenis Kelamin <i>Sex</i>		Jumlah <i>Total</i>
	Laki-laki <i>Male</i>	Perempuan <i>Female</i>	
(1)	(2)	(3)	(4)
0-14	22.435	21.263	43.698
15-64	60.173	59.152	119.325
65+	4.834	5.408	10.242
Jumlah/Total	87.442	85.823	173.265

Catatatan/Note: Hasil Perapihan Umur dari Data Administrasi Kependudukan dan Sensus Penduduk 2020 (September)/ *The Result of Smoothed Single Year of Age from Population Administration Data and the 2020 Population Census (September)*

Sumber/Source: BPS, Sensus Penduduk 2020/ *BPS-Statistics Indonesia, 2020 Population Census*

Penduduk dan Ketenagakerjaan

Tabel
Table

3.1.3

**Jumlah Keluarga, Jumlah Penduduk,
dan Kepadatan Penduduk per Keluarga
Menurut Desa di Kecamatan Cianjur, 2020**
*Number of Familiys, Population,
and Population Density per Family
by Village in Cianjur Subdistrict, 2020*

Desa <i>Village</i>	Jumlah Keluarga ¹ <i>Number of Famillys¹</i>	Jumlah Penduduk ² <i>Population²</i>	Kepadatan Penduduk per Keluarga <i>Population Density per Family</i>
(1)	(2)	(3)	(4)
1. Nagrak	-	16,610	-
2. Sukamaju	-	10,205	-
3. Sayang	-	36,152	-
4. Solokpandan	-	11,533	-
5. Muka	-	18,844	-
6. Bojongherang	-	16,408	-
7. Pamoyanan	-	14,458	-
8. Sawahgede	-	15,525	-
9. Limbangsari	-	11,260	-
10. Mekarsari	-	12,468	-
11. Babakankaret	-	9,802	-
Jumlah/Total		173,265	

Catatan/Note: ¹ Jumlah Keluarga berdasarkan Pendataan Potensi Desa (Podes) 2020/ *Number of Familiys are Based on Village Potential Data Collection 2020*

² Jumlah Penduduk Berdasarkan Hasil SP2020 (September)/ *Population are Based on the Result of the 2020 Population Cencus (September)*

Sumber/Source: BPS, Sensus Penduduk 2020 dan Profil Desa/Village Profile/Village Profile/Village Profile/Village Profile/ *BPS-Statistics Indonesia, 2020 Population Cencus and Village Profile*

Population and Employment

Tabel 3.1.4 **Jumlah Penduduk Menurut Desa, Jenis Kelamin, dan Rasio Jenis Kelamin di Kecamatan Cianjur, 2020**
Population by Village, Sex, and Sex Ratio in Cianjur Subdistrict, 2020

Desa Village	Jenis Kelamin Sex		Jumlah Total	Rasio Jenis Kelamin Sex Ratio
	Laki-laki Male	Perempuan Female		
(1)	(2)	(3)	(4)	(5)
1. Nagrak	8.425	8.185	16.610	102,9
2. Sukamaju	5.142	5.063	10.205	101,6
3. Sayang	18.111	18.041	36.152	100,4
4. Solokpandan	5.749	5.784	11.533	99,4
5. Muka	9.587	9.257	18.844	103,6
6. Bojongherang	8.231	8.177	16.408	100,7
7. Pamoyanan	7.277	7.181	14.458	101,3
8. Sawahgede	7.741	7.784	15.525	99,4
9. Limbangsari	5.678	5.582	11.260	101,7
10. Mekarsari	6.375	6.093	12.468	104,6
11. Babakankaret	5.126	4.676	9.802	109,6
Jumlah/Total	87.442	85.823	173.265	101,9

Sumber/Source: *Badan Pusat Statistik*

Penduduk dan Ketenagakerjaan

Tabel
Table

3.1.5

**Jumlah Kelahiran Penduduk Menurut Desa
dan Jenis Kelamin di Kecamatan Cianjur, 2020**
*Fertility by Village and Sex
in Cianjur Subdistrict, 2020*

Desa <i>Village</i>	Jenis Kelamin <i>Sex</i>		Jumlah <i>Total</i>
	Laki-laki <i>Male</i>	Perempuan <i>Female</i>	
(1)	(2)	(3)	(4)
1. Nagrak	42	37	79
2. Sukamaju	115	110	225
3. Sayang	347	328	675
4. Solokpandan	110	102	212
5. Muka	123	127	150
6. Bojongherang	260	240	500
7. Pamoyanan	52	62	114
8. Sawahgede	80	85	165
9. Limbangsari	38	40	78
10. Mekarsari	94	72	166
11. Babakankaret	36	48	84
Jumlah/Total	1.297	1.251	2.448

Sumber/Source: Profil Desa/Village Profile

Population and Employment

Tabel 3.1.6 **Jumlah Kematian Penduduk Menurut Desa dan Jenis Kelamin di Kecamatan Cianjur, 2020**
Table **Mortality by Village and Sex in Cianjur Subdistrict, 2020**

	Desa Village	Jenis Kelamin Sex		Jumlah Total
		Laki-laki Male	Perempuan Female	
	(1)	(2)	(3)	(4)
1.	Nagrak	50	67	117
2.	Sukamaju	105	92	197
3.	Sayang	180	190	370
4.	Solokpandan	82	80	162
5.	Muka	72	63	135
6.	Bojongherang	98	77	175
7.	Pamoyanan	72	62	134
8.	Sawahgede	63	76	139
9.	Limbangansari	32	45	77
10.	Mekarsari	42	30	72
11.	Babakankaret	53	80	133
	Jumlah/Total	849	862	1.711

Sumber/Source: Profil Desa/Village Profile

Tabel
Table

3.1.7

**Migrasi Masuk Menurut Desa dan Jenis Kelamin
di Kecamatan Cianjur, 2020**
*In Migration by Village and Sex
in Cianjur Subdistrict, 2020*

	Desa <i>Village</i>	Jenis Kelamin <i>Sex</i>		Jumlah <i>Total</i>
		Laki-laki <i>Male</i>	Perempuan <i>Female</i>	
	(1)	(2)	(3)	(4)
1.	Nagrak	38	44	82
2.	Sukamaju	25	30	55
3.	Sayang	75	32	107
4.	Solokpandan	45	44	89
5.	Muka	345	314	659
6.	Bojongherang	112	88	200
7.	Pamoyanan	30	35	65
8.	Sawahgede	167	154	321
9.	Limbangansari	32	34	66
10.	Mekarsari	15	13	28
11.	Babakankaret	32	43	75
	Jumlah/Total	916	831	1.747

Sumber/Source: Profil Desa/Village Profile

Population and Employment

Tabel 3.1.8 **Migrasi Keluar Menurut Desa dan Jenis Kelamin di Kecamatan Cianjur, 2020**
Table 3.1.8 **Out Migration by Village and Sex in Cianjur Subdistrict, 2020**

Desa <i>Village</i>	Jenis Kelamin <i>Sex</i>		Jumlah <i>Total</i>
	Laki-laki <i>Male</i>	Perempuan <i>Female</i>	
(1)	(2)	(3)	(4)
1. Nagrak	18	10	28
2. Sukamaju	10	2	12
3. Sayang	25	50	75
4. Solokpandan	9	7	16
5. Muka	15	16	31
6. Bojongherang	27	15	42
7. Pamoyanan	125	144	269
8. Sawahgede	8	11	19
9. Limbangsari	24	15	39
10. Mekarsari	10	12	22
11. Babakankaret	12	10	22
Jumlah/Total	283	292	575

Sumber/Source: Profil Desa/Village Profile

Penduduk dan Ketenagakerjaan

Tabel
Table

3.1.9

Jumlah Penduduk Usia Sekolah Menurut Desa dan Jenis Kelamin di Kecamatan Cianjur, 2020
School Age Population by Village and Sex in Cianjur Subdistrict, 2020

Desa Village	Usia Age			Jumlah Total
	7-12	13-15	16-18	
(1)	(2)	(3)	(4)	(5)
1. Nagrak	2.674	1.176	849	4.699
2. Sukamaju	1.643	722	521	2.886
3. Sayang	5.820	2.560	1.847	10.227
4. Solokpandan	1.857	816	589	3.262
5. Muka	3.034	1.334	963	5.331
6. Bojongherang	2.642	1.162	838	4.642
7. Pamoyanan	2.328	1.024	739	4.091
8. Sawahgede	2.499	1.099	793	4.391
9. Limbangsari	1.813	797	575	3.185
10. Mekarsari	2.007	883	637	3.527
11. Babakankaret	1.578	694	501	2.773
Jumlah/Total	27.895	12.267	8.852	49.014

Sumber/Source: Profil Desa/Village Profile

Population and Employment

3.2 KETENAGAKERJAAN EMPLOYMENT

Tabel 3.2.1 Jumlah Penduduk Berumur 15 Tahun Keatas yang Bekerja Menurut Desa dan Jenis Pekerjaan di Kecamatan Cianjur, 2020
Population Aged 15 Years and Over Who Worked by Village and The Type of Work in Cianjur Subdistrict, 2020

Desa <i>Village</i>	PNS <i>Civil Servant</i>	TNI <i>Indonesian National Army</i>	Pensiunan <i>Pensionary</i>	
			PNS <i>Civil Servant</i>	TNI <i>Indonesian National Army</i>
(1)	(2)	(3)	(4)	(5)
1. Nagrak	205	35	105	6
2. Sukamaju	240	16	85	25
3. Sayang	778	58	52	10
4. Solokpandan	891	141	14	12
5. Muka	1.610	24	32	6
6. Bojongherang	325	12	256	10
7. Pamoyanan	396	35	104	15
8. Sawahgede	320	100	42	34
9. Limbangsari	423	17	116	4
10. Mekarsari	672	11	64	15
11. Babakankaret	58	6	15	4
Jumlah/Total	5.918	455	885	141

Sumber/Source: Profil Desa/Village Profile

Keterangan/note: Data Sawahgede tidak tersedia/ Data for Sawahgede are not available

Penduduk dan Ketenagakerjaan

Tabel
Table

3.2.2

**Jumlah TKI Menurut Desa dan Jenis Kelamin
di Kecamatan Cianjur, 2020**
*Number of Indonesian Workers by Village and Sex
in Cianjur Subdistrict, 2020*

	Desa <i>Village</i>	Jenis Kelamin <i>Sex</i>		Jumlah <i>Total</i>
		Laki-laki <i>Male</i>	Perempuan <i>Female</i>	
	(1)	(2)	(3)	(4)
1.	Nagrak	14	30	44
2.	Sukamaju	9	11	20
3.	Sayang	15	25	40
4.	Solokpandan	0	0	0
5.	Muka	4	3	7
6.	Bojongherang	4	6	10
7.	Pamoyanan	4	2	6
8.	Sawahgede	0	3	3
9.	Limbangsari	21	27	48
10.	Mekarsari	10	18	28
11.	Babakankaret	7	14	21
	Jumlah/Total	88	139	227

Sumber/Source: Profil Desa/Village Profile

Population and Employment

<https://cianjurkab.bps.go.id>



04

SOSIAL DAN KESEJAHTERAAN RAKYAT
SOCIAL AND WELFARE

Social and Welfare

4.1 PENDIDIKAN EDUCATION

Tabel 4.1.1 Jumlah Sekolah Menurut Desa dan Tingkat Pendidikan di Kecamatan Cianjur, 2020
Table 4.1.1 *Number of Schools by Village and Education Level in Cianjur Subdistrict, 2020*

Desa Village	Taman Kanak-Kanak (TK)/ Raudhatul Athfal (RA) Nursery Schools/ Raudhatul Athfal (RA)	Sekolah Dasar (SD) Primary Schools	Sekolah Lanjutan Tingkat Pertama (SLTP) Junior High Schools
(1)	(2)	(3)	(4)
1. Nagrak	7	5	3
2. Sukamaju	2	4	0
3. Sayang	14	7	3
4. Solokpandan	5	4	2
5. Muka	10	5	1
6. Bojongherang	6	9	4
7. Pamoyanan	11	5	6
8. Sawahgede	13	13	5
9. Limbangsari	5	6	3
10. Mekarsari	4	4	0
11. Babakankaret	1	3	2
Jumlah/Total	78	65	29

Sumber/Source: Profil Desa/Village Profile

Sosial dan Kesejahteraan Rakyat

Lanjutan Tabel/Continued Table 4.1.1

Desa Village	Sekolah Lanjutan Tingkat Atas (SLTA) Senior High Schools	
	Sekolah Menengah Atas (SMA) Senior High Schools	Sekolah Menengah Kejuruan (SMK) Vocational Senior High Schools
(1)	(5)	(6)
1. Nagrak	1	3
2. Sukamaju	0	1
3. Sayang	0	3
4. Solokpandan	1	0
5. Muka	2	0
6. Bojongherang	0	4
7. Pamoyanan	4	3
8. Sawahgede	3	5
9. Limbangsari	1	1
10. Mekarsari	0	0
11. Babakankaret	0	1
Jumlah/Total	12	21

Sumber/Source: Profil Desa/Village Profile

Social and Welfare

Tabel 4.1.2 **Jumlah Taman Kanak-Kanak (TK) dan Sekolah Dasar (SD) Menurut Desa dan Status Sekolah di Kecamatan Cianjur, 2020**
Number of Nursery Schools and Primary Schools by Village and School Status in Cianjur Subdistrict, 2020

Desa Village	Taman Kanak-Kanak (TK) Nursery Schools		Sekolah Dasar (SD) Primary Schools	
	Negeri State	Swasta Private	Negeri State	Swasta Private
(1)	(2)	(3)	(4)	(5)
1. Nagrak	1	7	5	0
2. Sukamaju	0	2	4	0
3. Sayang	0	14	7	0
4. Solokpandan	0	5	2	2
5. Muka	0	10	4	1
6. Bojongherang	0	6	6	3
7. Pamoyanan	0	11	5	0
8. Sawahgede	0	13	9	4
9. Limbangsari	0	5	6	0
10. Mekarsari	0	4	4	0
11. Babakankaret	0	1	3	0
Jumlah/Total	1	78	55	10

Sumber/Source: Profil Desa/Village Profile

Sosial dan Kesejahteraan Rakyat

Tabel
Table

4.1.3

**Jumlah Sekolah Lanjutan Tingkat Pertama (SLTP)
dan Sekolah Lanjutan Tingkat Atas (SLTA)
Menurut Desa dan Status Sekolah
di Kecamatan Cianjur, 2020
Number of Junior High Schools
and Senior High Schools by Village and School Status
in Cianjur Subdistrict, 2020**

Desa <i>Village</i>	Sekolah Lanjutan Tingkat Pertama (SLTP) <i>Junior High Schools</i>		Sekolah Menengah Atas (SMA) <i>Senior High Schools</i>	
	Negeri <i>State</i>	Swasta <i>Private</i>	Negeri <i>State</i>	Swasta <i>Private</i>
(1)	(2)	(3)	(4)	(5)
1. Nagrak	1	2	0	1
2. Sukamaju	0	0	0	0
3. Sayang	0	3	0	0
4. Solokpandan	0	2	0	1
5. Muka	0	1	0	2
6. Bojongherang	1	3	0	0
7. Pamoyanan	2	4	0	4
8. Sawahgede	1	4	1	2
9. Limbangsari	0	2	1	0
10. Mekarsari	0	0	0	0
11. Babakankaret	0	3	0	0
Jumlah/Total	5	24	2	10

Sumber/Source: Profil Desa/Village Profile

Social and Welfare

Lanjutan Tabel/Continued Table 4.1.3

Desa Village	Sekolah Menengah Kejuruan (SMK) Vocational Senior High Schools	
	Negeri State	Swasta Private
(1)	(6)	(7)
1. Nagrak	0	2
2. Sukamaju	0	1
3. Sayang	0	4
4. Solokpandan	0	0
5. Muka	0	0
6. Bojongherang	0	4
7. Pamoyanan	0	3
8. Sawahgede	1	4
9. Limbangsari	0	1
10. Mekarsari	0	0
11. Babakankaret	0	1
Jumlah/Total	1	20

Sumber/Source: Profil Desa/Village Profile

Sosial dan Kesejahteraan Rakyat

Tabel
Table

4.1.4

**Jumlah Madrasah Diniyah, Madrasah Ibtidaiyah,
Madrasah Tsanawiyah, dan Madrasah Aliyah
Menurut Desa di Kecamatan Cianjur, 2020**
*Number of Madrasah Diniyah, Madrasah Ibtidaiyah,
Madrasah Tsanawiyah, and Madrasah Aliyah
by Village in Cianjur Subdistrict, 2020*

Desa Village	Madrasah Diniyah	Madrasah Ibtidaiyah	Madrasah Tsanawiyah	Madrasah Aliyah
(1)	(2)	(3)	(4)	(5)
1. Nagrak	-	0	1	0
2. Sukamaju	-	1	1	0
3. Sayang	-	1	1	0
4. Solokpandan	-	0	0	0
5. Muka	-	2	1	0
6. Bojongherang	-	1	1	1
7. Pamoyanan	-	1	1	0
8. Sawahgede	-	1	1	1
9. Limbangsari	-	0	1	0
10. Mekarsari	-	0	0	0
11. Babakankaret	-	1	1	0
Jumlah/Total	-	8	9	2

Sumber/Source: Profil Desa/Village Profile

Social and Welfare

Tabel
Table

4.1.5

Jumlah Murid Taman Kanak-Kanak (TK) dan Sekolah Dasar (SD) Menurut Desa dan Status Sekolah di Kecamatan Cianjur, 2020
Number of Students Nursery Schools and Primary Schools by Village and School Status in Cianjur Subdistrict, 2020

Desa Village	Taman Kanak-Kanak (TK) Nursery Schools		Sekolah Dasar (SD) Primary Schools	
	Negeri State	Swasta Private	Negeri State	Swasta Private
(1)	(2)	(3)	(4)	(5)
1. Nagrak	-	-	826	0
2. Sukamaju	-	-	699	0
3. Sayang	-	-	2.496	0
4. Solokpandan	-	-	127	658
5. Muka	-	-	1.264	185
6. Bojongherang	-	-	1.497	1.008
7. Pamoyanan	-	-	1.175	0
8. Sawahgede	-	-	2.485	875
9. Limbangansari	-	-	1.445	0
10. Mekarsari	-	-	913	0
11. Babakankaret	-	-	671	0
Jumlah/Total	-	-	13.598	2.726

Sumber/Source: Profil Desa/Village Profile

Sosial dan Kesejahteraan Rakyat

Tabel
Table

4.1.6

Jumlah Murid Sekolah Lanjutan Tingkat Pertama (SLTP) dan Sekolah Lanjutan Tingkat Atas (SLTA) Menurut Desa dan Status Sekolah di Kecamatan Cianjur, 2020
Number of Students Junior High Schools and Senior High Schools by Village and School Status in Cianjur Subdistrict, 2020

Desa <i>Village</i>	Sekolah Lanjutan Tingkat Pertama (SLTP) <i>Junior High Schools</i>		Sekolah Menengah Atas (SMA) <i>Senior High Schools</i>	
	Negeri <i>State</i>	Swasta <i>Private</i>	Negeri <i>State</i>	Swasta <i>Private</i>
(1)	(2)	(3)	(4)	(5)
1. Nagrak	750	290	0	193
2. Sukamaju	0	0	0	0
3. Sayang	0	159	0	0
4. Solokpandan	0	561	0	1.042
5. Muka	0	92	0	164
6. Bojongherang	833	398	0	0
7. Pamoyanan	1.986	638	0	128
8. Sawahgede	1.183	496	1313	148
9. Limbangsari	0	223	1189	0
10. Mekarsari	0	0	0	0
11. Babakankaret	0	189	0	0
Jumlah/Total	4.002	3.046	2.502	1.675

Sumber/Source: Profil Desa/Village Profile

Social and Welfare

Lanjutan Tabel/Continued Table 4.1.6

Desa Village	Sekolah Menengah Kejuruan (SMK) Vocational Senior High Schools	
	Negeri State	Swasta Private
(1)	(6)	(7)
1. Nagrak	0	331
2. Sukamaju	0	138
3. Sayang	0	841
4. Solokpandan	0	0
5. Muka	0	0
6. Bojongherang	0	629
7. Pamoyanan	0	423
8. Sawahgede	1.720	1.132
9. Limbangsari	0	0
10. Mekarsari	0	0
11. Babakankaret	0	197
Jumlah/Total	1.720	3.691

Sumber/Source: Profil Desa/Village Profile

Sosial dan Kesejahteraan Rakyat

Tabel
Table

4.1.7

**Jumlah Murid Madrasah Diniyah dan Ibtidaiyah
Menurut Desa dan Status Sekolah
di Kecamatan Cianjur, 2020**
**Number of Students Madrasah Diniyah
and Ibtidaiyah by Village and School Status
in Cianjur Subdistrict, 2020**

Desa Village	Madrasah Diniyah		Madrasah Ibtidaiyah	
	Negeri State	Swasta Private	Negeri State	Swasta Private
(1)	(2)	(3)	(4)	(5)
1. Nagrak	-	-	-	-
2. Sukamaju	-	-	-	-
3. Sayang	-	-	-	-
4. Solokpandan	-	-	-	-
5. Muka	-	-	-	-
6. Bojongherang	-	-	-	-
7. Pamoyanan	-	-	-	-
8. Sawahgede	-	-	-	-
9. Limbangsari	-	-	-	-
10. Mekarsari	-	-	-	-
11. Babakankaret	-	-	-	-
Jumlah/Total	-	-	-	-

Sumber/Source: Profil Desa/Village Profile

Social and Welfare

Tabel 4.1.8 **Jumlah Murid Madrasah Tsanawiyah dan Aliyah Menurut Desa dan Status Sekolah di Kecamatan Cianjur, 2020**
Number of Students Madrasah Tsanawiyah and Aliyah by Village and School Status in Cianjur Subdistrict, 2020

Desa Village	Madrasah Tsanawiyah		Madrasah Aliyah	
	Negeri State	Swasta Private	Negeri State	Swasta Private
(1)	(2)	(3)	(4)	(5)
1. Nagrak	-	-	-	-
2. Sukamaju	-	-	-	-
3. Sayang	-	-	-	-
4. Solokpandan	-	-	-	-
5. Muka	-	-	-	-
6. Bojongherang	-	-	-	-
7. Pamoyanan	-	-	-	-
8. Sawahgede	-	-	-	-
9. Limbangansari	-	-	-	-
10. Mekarsari	-	-	-	-
11. Babakankaret	-	-	-	-
Jumlah/Total	-	-	-	-

Sumber/Source: Profil Desa/Village Profile

Sosial dan Kesejahteraan Rakyat

Tabel
Table

4.1.9

**Jumlah Guru Taman Kanak-Kanak (TK)
dan Sekolah Dasar (SD) Menurut Desa dan
Status Sekolah di Kecamatan Cianjur, 2020**
*Number of Teachers Nursery Schools
and Primary Schools by Village and School Status
in Cianjur Subdistrict, 2020*

Desa Village	Taman Kanak-Kanak (TK) Nursery Schools		Sekolah Dasar (SD) Primary Schools	
	Negeri State	Swasta Private	Negeri State	Swasta Private
(1)	(2)	(3)	(4)	(5)
1. Nagrak	-	-	37	0
2. Sukamaju	-	-	40	0
3. Sayang	-	-	102	0
4. Solokpandan	-	-	35	31
5. Muka	-	-	61	8
6. Bojongherang	-	-	76	59
7. Pamoyanan	-	-	51	0
8. Sawahgede	-	-	132	66
9. Limbangsari	-	-	62	0
10. Mekarsari	-	-	31	0
11. Babakankaret	-	-	29	0
Jumlah/Total	-	-	656	164

Sumber/Source: Profil Desa/Village Profile

Social and Welfare

Tabel 4.1.10 **Jumlah Guru Sekolah Lanjutan Tingkat Pertama (SLTP) dan Sekolah Lanjutan Tingkat Atas (SLTA) Menurut Desa dan Status Sekolah di Kecamatan Cianjur, 2020**
Number of Teachers Junior High Schools and Senior High Schools by Village and School Status in Cianjur Subdistrict, 2020

Desa Village	Sekolah Lanjutan Tingkat Pertama (SLTP) Junior High Schools		Sekolah Menengah Atas (SMA) Senior High Schools	
	Negeri State	Swasta Private	Negeri State	Swasta Private
(1)	(2)	(3)	(4)	(5)
1. Nagrak	38	24	0	16
2. Sukamaju	0	0	0	0
3. Sayang	0	6	0	0
4. Solokpandan	0	41	0	30
5. Muka	0	10	0	13
6. Bojongherang	39	38	0	0
7. Pamoyanan	88	27	0	27
8. Sawahgede	40	42	107	19
9. Limbangsari	0	16	63	0
10. Mekarsari	0	0	0	0
11. Babakankaret	0	7	0	0
Jumlah/Total	205	211	170	105

Sumber/Source: Profil Desa/Village Profile

Sosial dan Kesejahteraan Rakyat

Lanjutan Tabel/*Continued Table 4.1.10*

Desa <i>Village</i>	Sekolah Menengah Kejuruan (SMK) <i>Vocational Senior High Schools</i>	
	Negeri <i>State</i>	Swasta <i>Private</i>
(1)	(6)	(7)
1. Nagrak	-	30
2. Sukamaju	-	9
3. Sayang	-	36
4. Solokpandan	-	-
5. Muka	-	-
6. Bojongherang	-	48
7. Pamoyanan	-	25
8. Sawahgede	83	79
9. Limbangsari	-	-
10. Mekarsari	-	-
11. Babakankaret	-	10
Jumlah/Total	83	227

Sumber/*Source*: Profil Desa/*Village Profile*

Social and Welfare

Tabel 4.1.11 **Jumlah Guru Madrasah Diniyah dan Ibtidaiyah Menurut Desa dan Status Sekolah di Kecamatan Cianjur, 2020**
Number of Teachers Madrasah Diniyah and Ibtidaiyah by Village and School Status in Cianjur Subdistrict, 2020

Desa Village	Madrasah Diniyah		Madrasah Ibtidaiyah	
	Negeri State	Swasta Private	Negeri State	Swasta Private
(1)	(2)	(3)	(4)	(5)
1. Nagrak	-	-	-	-
2. Sukamaju	-	-	-	-
3. Sayang	-	-	-	-
4. Solokpandan	-	-	-	-
5. Muka	-	-	-	-
6. Bojongherang	-	-	-	-
7. Pamoyanan	-	-	-	-
8. Sawahgede	-	-	-	-
9. Limbangansari	-	-	-	-
10. Mekarsari	-	-	-	-
11. Babakankaret	-	-	-	-
Jumlah/Total	-	-	-	-

Sumber/Source: Profil Desa/Village Profile

Sosial dan Kesejahteraan Rakyat

Tabel
Table

4.1.12

**Jumlah Guru Madrasah Tsanawiyah dan Aliyah
di Kecamatan Cianjur, 2020**
**Number of Teachers Madrasah Tsanawiyah
and Aliyah by Village and School Status
in Cianjur Subdistrict, 2020**

Desa Village	Madrasah Tsanawiyah		Madrasah Aliyah	
	Negeri State	Swasta Private	Negeri State	Swasta Private
(1)	(2)	(3)	(4)	(5)
1. Nagrak	-	-	-	-
2. Sukamaju	-	-	-	-
3. Sayang	-	-	-	-
4. Solokpandan	-	-	-	-
5. Muka	-	-	-	-
6. Bojongherang	-	-	-	-
7. Pamoyanan	-	-	-	-
8. Sawahgede	-	-	-	-
9. Limbangsari	-	-	-	-
10. Mekarsari	-	-	-	-
11. Babakankaret	-	-	-	-
Jumlah/Total	-	-	-	-

Sumber/Source: Profil Desa/Village Profile

Social and Welfare

4.2 KESEHATAN HEALTH

Tabel 4.2.1 **Jumlah Sarana Kesehatan Menurut Desa dan Jenisnya di Kecamatan Cianjur, 2020**
Number of Health Facilities by Village and Type of Health Facilities in Cianjur Subdistrict, 2020

Desa Village	Rumah Sakit Hospital		Poliklinik Polyclinic	Puskesmas Public Health Center	Puskesmas Pembantu Supporting Public Health Center
	Umum General	Bersalin Maternity			
(1)	(2)	(3)	(4)	(5)	(6)
1. Nagrak	0	0	0	1	1
2. Sukamaju	0	0	0	0	0
3. Sayang	0	0	0	0	0
4. Solokpandal	0	0	0	0	0
5. Muka	0	0	1	1	0
6. Bojongherang	1	0	2	0	0
7. Pamoyanan	1	0	6	0	0
8. Sawahgede	0	0	3	1	0
9. Limbangsari	0	0	1	0	1
10. Mekarsari	0	0	0	0	1
11. Babakankaret	0	0	0	0	1
Jumlah/Total	2	0	13	3	4

Sumber/Source: Profil Desa/Village Profile

Sosial dan Kesejahteraan Rakyat

Lanjutan Tabel/*Continued Table 4.2.1*

	Desa Village	Praktek Dokter Physician Practice	Praktek Bidan Midwife Practice	Poskesdes Village Health Posts	Posyandu Maternal and Child Health Centre	Apotek Pharmacy
	(1)	(7)	(8)	(9)	(10)	(11)
1.	Nagrak	2	4	0	16	1
2.	Sukamaju	1	4	0	11	0
3.	Sayang	6	6	1	25	10
4.	Solokpandan	7	1	1	16	6
5.	Muka	6	2	0	23	6
6.	Bojongherang	2	3	0	22	12
7.	Pamoyanan	10	3	1	25	11
8.	Sawahgede	8	3	1	16	5
9.	Limbangansari	1	3	0	13	2
10.	Mekarsari	2	4	1	10	0
11.	Babakankaret	0	4	1	11	0
	Jumlah/Total	45	37	6	188	53

Sumber/Source: Profil Desa/Village Profile

Social and Welfare

Tabel
Table

4.2.2

Jumlah Tenaga Kesehatan yang Tinggal/Menetap di Desa Menurut Desa dan Jenisnya di Kecamatan Cianjur, 2020
Number of Health Workers Who Settled in The Village by Village and Type of Health Workers in Cianjur Subdistrict, 2020

	Desa Village	Dokter Doctor	Dokter Gigi Dentist	Bidan Midwife	Tenaga Kesehatan Lainnya Other Health Workers	Dukun Bayi Traditional Birth Attendants
	(1)	(2)	(3)	(4)	(5)	(6)
1.	Nagrak	6	0	3	5	1
2.	Sukamaju	1	0	3	12	1
3.	Sayang	2	0	3	0	0
4.	Solokpandan	8	2	4	2	2
5.	Muka	4	1	2	2	5
6.	Bojongherang	10	2	11	1	3
7.	Pamoyanan	9	1	3	1	1
8.	Sawahgede	6	1	2	2	0
9.	Limbangansari	5	0	3	4	2
10.	Mekarsari	6	0	3	13	0
11.	Babakankaret	1	0	2	0	5
	Jumlah/Total	58	7	39	42	20

Sumber/Source: Profil Desa/Village Profile

Sosial dan Kesejahteraan Rakyat

Tabel
Table

4.2.3

**Jarak Setiap Desa ke Sarana Kesehatan Terdekat
Menurut Jenisnya di Kecamatan Cianjur, 2020**
*Distance Every Village to Health Facilities by Type of
Health Facilities in Cianjur Subdistrict, 2020*

Desa Village	Jarak ke (km) Distance to (km)				
	Rumah Sakit Hospital		Puskesmas Public Health Center	Praktek Dokter Doctor Practice	Mantri/ Bidan Orderly/ Nurse
	Umum General	Bersalin Maternity			
(1)	(2)	(3)	(4)	(5)	(6)
1. Nagrak	4,6	38	0	0	0
2. Sukamaju	2,2	48	2,1	0	0
3. Sayang	3	48	3	0	0
4. Solokpandan	2,1	48	2,6	0	0
5. Muka	2,6	43	0	0	0
6. Bojongherang	0	38	1	0	0
7. Pamoyanan	0	48	0,6	0	0
8. Sawahgede	3,6	39	0	0	0
9. Limbangsari	2,6	36	2,3	0	0
10. Mekarsari	3	48	3	0	0
11. Babakankaret	3,1	52	4,2	2,3	0
Jumlah/Total	26,8	486	18,8	2,3	0

Sumber/Source: Profil Desa/Village Profile

Social and Welfare

Tabel 4.2.4 **Jumlah Dukun Bayi Menurut Desa dan Keahliannya di Kecamatan Cianjur, 2020**
Table **Number of Traditional Birth Attendants by Village and Expertise in Cianjur Subdistrict, 2020**

Desa Village	Dukun Bayi Traditional Birth Attendants	
	Yang Ada Which Exists	Terlatih Skilled
(1)	(2)	(3)
1. Nagrak	1	1
2. Sukamaju	1	1
3. Sayang	0	0
4. Solokpandan	2	2
5. Muka	5	5
6. Bojongherang	3	3
7. Pamoyanan	1	1
8. Sawahgede	0	0
9. Limbangansari	2	2
10. Mekarsari	0	0
11. Babakankaret	5	5
Jumlah/Total	20	20

Sumber/Source: Profil Desa/Village Profile

Sosial dan Kesejahteraan Rakyat

4.3 KELUARGA BERENCANA FAMILY PLANNING

Tabel 4.3.1 Jumlah Pasangan Usia Subur (PUS) dan Peserta KB Aktif Menurut Desa dan Jenis Kontrasepsi di Kecamatan Cianjur, 2020
Number of Spouses of Fertile Age (EFA) and Family Planning Participants by Village and Type of Contraception in Cianjur Subdistrict, 2020

	Desa <i>Village</i>	Jumlah PUS <i>EFA Total</i>	Jenis Kontrasepsi <i>Type of Contraception</i>			
			IUD	MOP	MOW	IMPLAN
	(1)	(2)	(3)	(4)	(5)	(6)
1.	Nagrak	2.858	192	5	86	69
2.	Sukamaju	2.127	202	0	52	78
3.	Sayang	6.040	513	3	168	122
4.	Solokpandan	3.299	282	5	93	53
5.	Muka	4.069	398	23	120	181
6.	Bojongherang	3.539	353	9	86	130
7.	Pamoyanan	3.638	325	2	119	106
8.	Sawahgede	3.236	278	3	107	121
9.	Limbangansari	2.474	174	5	59	125
10.	Mekarsari	2.407	223	4	36	169
11.	Babakankaret	2.310	179	8	59	103
Jumlah/Total		35.997	3.119	67	985	1.257

Sumber/Source: PPL KB Kec Cianjur

Social and Welfare

Lanjutan Tabel/Continued Table 4.3.1

	Desa <i>Village</i>	Jenis Kontraspesi <i>Type of Contraception</i>				Jumlah <i>Total</i>
		Suntik	Pil	Kondom	O.V	
	(1)	(7)	(8)	(9)	(10)	(11)
1.	Nagrak	953	659	24	-	2.024
2.	Sukamaju	646	504	17	-	1.499
3.	Sayang	2470	1.007	60	-	4.343
4.	Solokpandan	1.194	634	34	-	2.295
5.	Muka	1.327	843	46	-	2.938
6.	Bojongherang	1.202	726	28	-	2.534
7.	Pamoyanan	1.242	743	30	-	2.567
8.	Sawahgede	1.043	678	45	-	2.275
9.	Limbangansari	819	522	21	-	1.725
10.	Mekarsari	735	550	21	-	1.738
11.	Babakankaret	751	495	21	-	1.616
	Jumlah/Total	12.382	7.361	347	-	25.554

Sumber/Source: PPL KB Kec Cianjur

Sosial dan Kesejahteraan Rakyat

Tabel
Table

4.3.2

Jumlah Pasangan Usia Subur (PUS), Peserta KB Aktif, dan Prevalensi Pemakaian Kontrasepsi (CPR) Menurut Desa dan Jenis Kontrasepsi di Kecamatan Cianjur, 2020
Number of Spouses of Fertile Age (EFA), Family Planning Participants, and Contraceptive Prevalence Rate (CPR) by Village and Type of Contraception in Cianjur Subdistrict, 2020

Desa <i>Village</i>	PUS <i>EFA</i>	Peserta KB Aktif <i>Family Planning Participants</i>	CPR
(1)	(2)	(3)	(4)
1. Nagrak	2.858	2.024	71
2. Sukamaju	2.127	1.499	70
3. Sayang	6.040	4.343	72
4. Solokpandan	3.299	2.295	69
5. Muka	4.069	2.938	72
6. Bojongherang	3.539	2.534	72
7. Pamoyanan	3.638	2.567	71
8. Sawahgede	3.236	2.275	70
9. Limbangsari	2.474	1.725	70
10. Mekarsari	2.407	1.738	72
11. Babakankaret	2.310	1.616	70
Jumlah/Total	35.997	25.554	71

Sumber/Source: PPL KB kecamatan Cianjur

Social and Welfare

4.4 PERUMAHAN DAN LINGKUNGAN HIDUP HOUSING AND ENVIRONMENT

Tabel 4.4.1 Tempat Pembuangan Sampah Sebagian Besar Keluarga Menurut Desa di Kecamatan Cianjur, 2020
Table 4.4.1 *Place of Trash Disposal Mostly Families by Village in Cianjur Subdistrict, 2020*

	Desa Village	Tempat Sampah Diangkut Trash Transported	Sungai River	Dibakar/Ditimbun Burnt/Backfilled
	(1)	(2)	(3)	(4)
1.	Nagrak	V	-	-
2.	Sukamaju	V	-	-
3.	Sayang	V	-	-
4.	Solokpandan	V	-	-
5.	Muka	V	-	-
6.	Bojongherang	V	-	-
7.	Pamoyanan	V	-	-
8.	Sawahgede	V	-	-
9.	Limbangansari	V	-	-
10.	Mekarsari	V	-	-
11.	Babakankaret	V	-	-
	Jumlah/Total	11	-	-

Sumber/Source: Profil Desa/Village Profile

Sosial dan Kesejahteraan Rakyat

Tabel
Table

4.4.2

**Fasilitas Tempat Buang Air Besar Sebagian Besar Keluarga
Menurut Desa di Kecamatan Cianjur, 2020**
**Toilet Facilities Mostly Families
by Village in Cianjur Subdistrict, 2020**

Desa <i>Village</i>	Sendiri <i>Not Shared</i>	Bersama <i>Shared</i>	Umum <i>Public Facility</i>	Tidak Ada <i>No Facility</i>
(1)	(2)	(3)	(4)	(5)
1. Nagrak	V	-	-	-
2. Sukamaju	V	-	-	-
3. Sayang	V	-	-	-
4. Solokpandan	V	-	-	-
5. Muka	V	-	-	-
6. Bojongherang	V	-	-	-
7. Pamoyanan	V	-	-	-
8. Sawahgede	V	-	-	-
9. Limbangansari	V	-	-	-
10. Mekarsari	V	-	-	-
11. Babakankaret	V	-	-	-
Jumlah/Total	11	-	-	-

Sumber/Source: Profil Desa/Village Profile

Social and Welfare

Tabel 4.4.3 **Jumlah Keluarga Pengguna Listrik Menurut Desa di Kecamatan Cianjur, 2020**
Table **Number of Family Power Users by Village in Cianjur Subdistrict, 2020**

	Desa Village	PLN State Electricity Company	Non-PLN Own Electricity Company	Jumlah Total
	(1)	(2)	(3)	(4)
1.	Nagrak	4.536	0	4.536
2.	Sukamaju	2.721	0	2.721
3.	Sayang	9.525	0	9.525
4.	Solokpandan	4.120	0	4.120
5.	Muka	5.579	0	5.579
6.	Bojongherang	5.160	0	5.160
7.	Pamoyanan	5.245	0	5.245
8.	Sawahgede	4.450	0	4.450
9.	Limbangansari	3.220	0	3.220
10.	Mekarsari	3.485	0	3.485
11.	Babakankaret	2.686	0	2.686
	Jumlah/Total	50.727	0	50.727

Sumber/Source: Profil Desa/Village Profile

Sosial dan Kesejahteraan Rakyat

Tabel

4.4.4

Table

**Prosentase Bahan Bakar yang Digunakan Oleh Sebagian
Besar Keluarga
Menurut Desa di Kecamatan Cianjur, 2020
*Fuel Used Mostly Families
by Village in Cianjur Subdistrict, 2020***

Desa <i>Village</i>	Elpiji <i>LPG</i>	Minyak Tanah <i>Kerosene</i>	Kayu Bakar <i>Wood</i>	Lainnya <i>Other</i>
(1)	(2)	(3)	(4)	(5)
1. Nagrak	90	1	9	0
2. Sukamaju	98	0	2	0
3. Sayang	90	6	4	0
4. Solokpandan	100	0	0	0
5. Muka	80	10	10	0
6. Bojongherang	92	4	2	2
7. Pamoyanan	90	0	10	0
8. Sawahgede	90	5	5	0
9. Limbangansari	97	0,5	2	0,5
10. Mekarsari	75	0	20	5
11. Babakankaret	60	5	35	0
Jumlah/Total	87,8	2,9	9,0	0,3

Sumber/Source: Profil Desa/Village Profile

Social and Welfare

Tabel 4.4.5 **Jumlah Permukiman, Bangunan, dan Keluarga di Bantaran Sungai Menurut Desa di Kecamatan Cianjur, 2020**
Number of Settlement, Building, and Family in The River Plate by Village in Cianjur Subdistrict, 2020

Desa Village	Permukiman Settlement	Bangunan Building	Keluarga Family
(1)	(2)	(3)	(4)
1. Nagrak	4	76	87
2. Sukamaju	0	0	0
3. Sayang	2	7	11
4. Solokpandan	0	0	0
5. Muka	2	26	31
6. Bojongherang	1	3	3
7. Pamoyanan	1	4	10
8. Sawahgede	0	0	0
9. Limbangansari	0	0	0
10. Mekarsari	4	47	54
11. Babakankaret	4	15	19
Jumlah/Total	18	178	215

Sumber/Source: Profil Desa/Village Profile

Sosial dan Kesejahteraan Rakyat

Tabel
Table

4.4.6

Jumlah Pengguna Air Minum Menurut Desa dan Sumber Air Minum di Kecamatan Cianjur, 2020
Number of Users of Water by Village and Water Resources in Cianjur Subdistrict, 2020

Desa <i>Village</i>	Ledeng/PDAM <i>Tap Water</i>	Sumur Gali <i>Wells</i>	Air Perpipaan <i>Piped Water</i>	Mata Air <i>Water Springs</i>
(1)	(2)	(3)	(4)	(5)
1. Nagrak	v	v	0	0
2. Sukamaju	v	v	0	0
3. Sayang	v	v	0	0
4. Solokpandan	v	v	0	0
5. Muka	v	v	0	0
6. Bojongherang	v	v	0	0
7. Pamoyanan	v	v	0	0
8. Sawahgede	v	v	0	0
9. Limbangsari	v	v	0	0
10. Mekarsari	v	v	0	0
11. Babakankaret	v	v	0	0
Jumlah/Total	v	v	0	0

Sumber/Source: Profil Desa/Village Profile

Social and Welfare

Lanjutan Tabel/Continued Table 4.4.6

Desa Village	Sumur Pompa Pumped Water	Sungai River	Embung Embung
(1)	(6)	(7)	(8)
1. Nagrak	0	0	0
2. Sukamaju	0	0	0
3. Sayang	0	0	0
4. Solokpandan	0	0	0
5. Muka	0	0	0
6. Bojongherang	0	0	0
7. Pamoyanan	0	0	0
8. Sawahgede	0	0	0
9. Limbangansari	0	0	0
10. Mekarsari	0	0	0
11. Babakankaret	0	0	0
Jumlah/Total	0	0	0

Sumber/Source: Profil Desa/Village Profile

4.5 SOSIAL LAINNYA
OTHER SOCIAL

Tabel 4.5.1 Jumlah Penyandang Cacat Menurut Desa
Table 4.5.1 Jumlah Penyandang Cacat Menurut Desa
di Kecamatan Cianjur, 2020
*Number of People With Disabilities by Village
in Cianjur Subdistrict, 2020*

	Desa <i>Village</i>	Tuna- netra <i>Blind</i>	Tunaru- ngu <i>Deaf</i>	Tunawi- cara <i>Mute</i>	Tunarungu Wicara <i>Deaf Speech</i>	Tunadaksa <i>Quadriple- gic</i>	Lain- lain <i>Other</i>
	(1)	(2)	(3)	(4)	(5)	(6)	(7)
1.	Nagrak	8	0	0	0	0	1
2.	Sukamaju	2	0	3	3	0	3
3.	Sayang	2	3	2	2	1	1
4.	Solokpandan	0	0	0	6	13	5
5.	Muka	3	0	0	2	1	1
6.	Bojongherang	1	6	2	5	1	3
7.	Pamoyanan	0	0	0	2	1	6
8.	Sawahgede	0	4	0	2	0	4
9.	Limbangansari	0	0	1	0	0	5
10.	Mekarsari	2	3	2	1	0	1
11.	Babakankaret	0	2	1	0	0	2
	Jumlah/Total	18	18	11	23	17	32

Sumber/Source: Profil Desa/Village Profile

Social and Welfare

Tabel 4.5.2 **Jumlah Sarana Peribadatan Menurut Desa di Kecamatan Cianjur, 2020**
Table **Number of Worship Place by Village in Cianjur Subdistrict, 2020**

	Desa Village	Mesjid Mosque	Langgar/Mushola Langgar/Mushola	Gereja Church	Vihara/Kuil Monastery/Temple
	(1)	(2)	(3)	(4)	(5)
1.	Nagrak	24	40	0	0
2.	Sukamaju	13	38	0	0
3.	Sayang	40	36	0	0
4.	Solokpandan	11	38	4	0
5.	Muka	26	68	2	1
6.	Bojongherang	20	64	0	0
7.	Pamoyanan	15	38	1	0
8.	Sawahgede	16	56	0	1
9.	Limbangansari	13	24	0	0
10.	Mekarsari	10	36	0	0
11.	Babakankaret	20	23	0	0
	Jumlah/Total	208	461	7	2

Sumber/Source: Profil Desa/Village Profile

Sosial dan Kesejahteraan Rakyat

Tabel
Table

4.5.3

**Jumlah Sarana Olahraga Menurut Desa
di Kecamatan Cianjur, 2020**
**Number of Sports Facilities by Village
in Cianjur Subdistrict, 2020**

	Desa Village	Tenis Tennis	Tenis Meja Table Tennis	Sepak Bola Football	Bulu Tangkis Badminton	Bola Volley Volleyball	Bola Basket Basket ball
	(1)	(2)	(3)	(4)	(5)	(6)	(7)
1.	Nagrak	0	41	0	9	2	4
2.	Sukamaju	0	3	2	4	2	0
3.	Sayang	0	19	4	6	4	0
4.	Solokpandan	1	1	0	3	2	3
5.	Muka	1	2	10	5	1	0
6.	Bojongherang	5	5	1	10	2	1
7.	Pamoyanan	1	12	1	4	3	4
8.	Sawahgede	0	2	0	1	1	5
9.	Limbangansari	0	4	1	4	2	3
10.	Mekarsari	6	6	2	5	1	0
11.	Babakankaret	0	8	2	7	5	0
	Jumlah/Total	14	103	23	58	25	20

Sumber/Source: Profil Desa/Village Profile

Social and Welfare

Tabel 4.5.4 **Jumlah Kelompok Olahraga Menurut Desa**
Table 4.5.4 **di Kecamatan Cianjur, 2020**
Number of Sports Group by Village
in Cianjur Subdistrict, 2020

	Desa Village	Tenis Tennis	Tenis Meja Table Tennis	Sepak Bola Football	Bulu Tangkis Badminton	Bola Volley Volleyball	Bola Basket Basket ball
	(1)	(2)	(3)	(4)	(5)	(6)	(7)
1.	Nagrak	1	11	2	7	6	5
2.	Sukamaju	1	5	2	4	4	0
3.	Sayang	1	13	4	8	6	1
4.	Solokpandan	1	14	2	7	8	4
5.	Muka	1	10	3	7	6	2
6.	Bojongherang	1	14	2	8	7	3
7.	Pamoyanan	1	15	2	12	9	9
8.	Sawahgede	2	18	2	12	11	8
9.	Limbangansari	2	7	2	6	4	0
10.	Mekarsari	1	5	2	5	3	0
11.	Babakankaret	1	4	2	3	3	0
	Jumlah/Total	13	116	25	79	67	32

Sumber/Source: Profil Desa/Village Profile



05

PERTANIAN, KEHUTANAN, PERTENAKAN DAN PERIKANAN
AGRICULTURE, FORESTRY, LIVESTOCK AND FISHERY



Agriculture, Forestry, Livestock and Fishery

Tabel 5.1 **Luas Lahan (ha) Menurut Desa dan Penggunaan di Kecamatan Cianjur, 2020**
Table 5.1 **Land Area (ha) by Village and Utilization in Cianjur Subdistrict, 2020**

	Desa Village	Luas Lahan Sawah Wetland Area	Luas Lahan Bukan Sawah Non Wetland Area	Jumlah Total
	(1)	(2)	(3)	(4)
1.	Nagrak	371	99	422
2.	Sukamaju	208	106	315
3.	Sayang	35	142	187
4.	Solokpandan	2	64	66
5.	Muka	7	84	90
6.	Bojongherang	38	194	199
7.	Pamoyanan	3	90	92
8.	Sawahgede	25	143	144
9.	Limbangansari	53	129	227
10.	Mekarsari	128	65	209
11.	Babakankaret	205	296	500
	Jumlah/Total	1.175	1.412	2.451

Sumber/Source: Profil Desa/Village Profile

Pertanian, Kehutanan, Peternakan dan Perikanan

Tabel 5.2 Luas Lahan Sawah Menurut Desa dan Jenis Irigasi di Kecamatan Cianjur, 2020
Wetland Area by Village and Type of Irrigation in Cianjur Subdistrict, 2020

	Desa <i>Village</i>	Irigasi <i>Irrigation</i>			Tadah Hujan <i>Rainfed</i>	Jumlah <i>Total</i>
		Teknis <i>Technical</i>	Setengah Teknis <i>Semi- Technical</i>	Sederhana <i>Simple</i>		
	(1)	(2)	(3)	(4)	(5)	(6)
1.	Nagrak	130	100	131	10	371
2.	Sukamaju	-	-	206	2	208
3.	Sayang	15	-	20	-	35
4.	Solokpandan	-	-	2	-	2
5.	Muka	-	-	7	-	7
6.	Bojongherang	20	-	18	-	38
7.	Pamoyanan	-	-	3	-	3
8.	Sawahgede	20	-	5	-	25
9.	Limbangansari	75	50	28	-	153
10.	Mekarsari	50	50	28	-	128
11.	Babakankaret			200	5	205
	Jumlah/Total	310	200	648	17	1.175

Sumber/Source: Profil Desa/Village Profile

Agriculture, Forestry, Livestock and Fishery

Tabel 5.3 **Produksi Padi Menurut Desa dan Jenis Padi di Kecamatan Cianjur, 2020**
Production of Paddy by Village and Type of Paddy in Cianjur Subdistrict, 2020

Desa Village	Padi Sawah Wetland Paddy		
	Luas Panen (ha) Harvested Area (ha)	Produktivitas (ha) Productivity (ha)	Produksi (Ton) Production (Ton)
(1)	(2)	(3)	(4)
1. Nagrak	1.067	5.7	6.082
2. Sukamaju	595	5.6	3.332
3. Sayang	102	5.6	571
4. Solokpandan	3	5.5	17
5. Muka	32	5.6	180
6. Bojongherang	144	5.6	806
7. Pamoyanan	32	5.5	176
8. Sawahgede	111	5.5	611
9. Limbangsari	294	5.6	1.646
10. Mekarsari	303	5.6	1.697
11. Babakankaret	606	5.4	3.272
Jumlah/Total	3.289	5.6	18.419

Sumber/Source: Profil Desa/Village Profile

Pertanian, Kehutanan, Peternakan dan Perikanan

Lanjutan Tabel/Continued Table 5.3

Desa <i>Village</i>	Padi Ladang <i>PaddyFields</i>		
	Luas Panen (ha) <i>Harvested Area (ha)</i>	Produktivitas (ha) <i>Productivity (ha)</i>	Produksi (Ton) <i>Production (Ton)</i>
(1)	(2)	(3)	(4)
1. Nagrak	-	-	-
2. Sukamaju	-	-	-
3. Sayang	-	-	-
4. Solokpandan	-	-	-
5. Muka	-	-	-
6. Bojongherang	-	-	-
7. Pamoyanan	-	-	-
8. Sawahgede	-	-	-
9. Limbangsari	-	-	-
10. Mekarsari	-	-	-
11. Babakankaret	-	-	-
Jumlah/Total	-	-	-

Sumber/Source:

Agriculture, Forestry, Livestock and Fishery

Tabel
Table

5.4

**Jumlah Sarana Pertanian Menurut Desa
di Kecamatan Cianjur, 2020**
**Number of Agriculture Facilities by Village
in Cianjur Subdistrict, 2020**

	Desa Village	Gilingan Padi Rice Mill	Traktor Tractor	Bajak/Garu Plow/Harrow	Perontok Gabah Threshing Grain
	(1)	(2)	(3)	(4)	(4)
1.	Nagrak	11	4	2	2
2.	Sukamaju	5	2	1	1
3.	Sayang	1	3	1	0
4.	Solokpandan	0	0	0	0
5.	Muka	0	1	0	0
6.	Bojongherang	0	1	0	0
7.	Pamoyanan	0	0	0	0
8.	Sawahgede	3	1	0	0
9.	Limbangansari	3	1	1	2
10.	Mekarsari	4	2	2	2
11.	Babakankaret	4	2	3	2
	Jumlah/Total	31	18	10	9

Sumber/Source: Profil Desa/Village Profile

Pertanian, Kehutanan, Peternakan dan Perikanan

Tabel
Table **5.5** **Jumlah Unggas Menurut Desa**
di Kecamatan Cianjur, 2020
Number of Poultry by Village
in Cianjur Subdistrict, 2020

Desa <i>Village</i>	Ayam Buras <i>Free Range Chicken</i>	Ayam Pedaging <i>Broiler</i>	Itik <i>Duck</i>	Kelinci <i>Rabbit</i>
(1)	(2)	(3)	(4)	(4)
1. Nagrak	-	-	-	-
2. Sukamaju	-	-	-	-
3. Sayang	-	-	-	-
4. Solokpandan	-	-	-	-
5. Muka	-	-	-	-
6. Bojongherang	-	-	-	-
7. Pamoyanan	-	-	-	-
8. Sawahgede	-	-	-	-
9. Limbangansari	-	-	-	-
10. Mekarsari	-	-	-	-
11. Babakankaret	-	-	-	-
Jumlah/Total	-	-	-	-

Sumber/Source: Profil Desa/Village Profile

Agriculture, Forestry, Livestock and Fishery

Tabel 5.6 **Jumlah Ternak Menurut Desa**
di Kecamatan Cianjur, 2020
Number of Livestock by Village
in Cianjur Subdistrict, 2020

Desa Village	Sapi Potong Beef Cattle	Sapi Perah Dairy Cattle	Kerbau Buffalo	Kambing Goat	Domba Sheep
(1)	(2)	(3)	(4)	(5)	(6)
1. Nagrak	-	-	-	-	-
2. Sukamaju	-	-	-	-	-
3. Sayang	-	-	-	-	-
4. Solokpandan	-	-	-	-	-
5. Muka	-	-	-	-	-
6. Bojongherang	-	-	-	-	-
7. Pamoyanan	-	-	-	-	-
8. Sawahgede	-	-	-	-	-
9. Limbangsari	-	-	-	-	-
10. Mekarsari	-	-	-	-	-
11. Babakankaret	-	-	-	-	-
Jumlah/Total	-	-	-	-	-

Sumber/Source: Profil Desa/Village Profile



06

INDUSTRI
INDUSTRY

<https://ianjuridika.bps.go.id>

Industry

Tabel 6.1 **Jumlah Perusahaan Industri Mikro dan Kecil Menurut Desa dan Jenis Industri di Kecamatan Cianjur, 2020**
Number of Micro and Small Manufacturing Industry by Village and Type of Industry in Cianjur Subdistrict, 2020

	Desa Village	Industri dari Kulit Manufacture of Leather	Industri dari Kayu Manufacture of Wood	Industri Logam Mulia Industrial Precious Metals	Industri Anyaman Industrial Woven
	(1)	(2)	(3)	(4)	(5)
1.	Nagrak	0	8	4	3
2.	Sukamaju	0	6	3	3
3.	Sayang	0	4	2	3
4.	Solokpandan	0	3	1	2
5.	Muka	0	4	0	0
6.	Bojongherang	0	2	1	1
7.	Pamoyanan	0	1	1	1
8.	Sawahgede	0	4	1	2
9.	Limbangansari	0	2	3	2
10.	Mekarsari	0	5	4	3
11.	Babakankaret	0	1	3	1
	Jumlah/Total	0	40	23	21

Sumber/Source: Profil Desa/Village Profile

Lanjutan Tabel/*Continued Table 6.1*

Desa Village	Industri Gerabah Pottery Industry	Industri dari Kain Manufacture of Fabrics	Industri Makanan Minuman Food and Beverage Industry	Industri Lainnya Other Industry
(1)	(6)	(7)	(8)	(9)
1. Nagrak	2	10	5	8
2. Sukamaju	3	3	11	6
3. Sayang	1	6	9	15
4. Solokpandan	0	3	6	13
5. Muka	0	2	10	21
6. Bojongherang	1	2	3	13
7. Pamoyanan	0	2	7	11
8. Sawahgede	2	2	8	10
9. Limbangsari	0	3	8	8
10. Mekarsari	0	2	6	9
11. Babakankaret	2	3	11	7
Jumlah/Total	11	38	84	121

Sumber/*Source*: Profil Desa/*Village Profile*

Industry

<https://cianjurkab.bps.go.id>



07

PERDAGANGAN
TRADING

Trading

Tabel 7.1 Jumlah Pasar, Minimarket, Toko, dan Warung Menurut Desa di Kecamatan Cianjur, 2020
Number of Markets, Minimarket, Stores, and Shops by Village in Cianjur Subdistrict, 2020

Desa Village	Pasar dengan Bangunan Market by Building	Pasar Tanpa Bangunan Market Without Building	Minimarket Minimarket	Toko Store	Warung Shop
(1)	(2)	(3)	(4)	(5)	(6)
1. Nagrak	1	0	4	32	250
2. Sukamaju	0	0	3	15	55
3. Sayang	0	0	12	156	99
4. Solokpandan	0	0	7	176	221
5. Muka	1	0	10	1.250	384
6. Bojongherang	0	1	7	221	115
7. Pamoyanan	0	0	5	727	155
8. Sawahgede	0	0	9	121	96
9. Limbangansari	0	0	5	56	32
10. Mekarsari	0	0	1	62	49
11. Babakankaret	0	0	0	3	10
Jumlah/Total	2	1	63	2.820	1.466

Sumber/Source: Profil Desa/Village Profile



08

TRANSPORTASI DAN PARIWISATA

TRANSPORTATION AND TOURISM

Transportation and Tourism

8.1 Transportasi Transportation

Tabel
Table 8.1.1 **Jumlah Sarana Angkutan Menurut Desa dan Jenis Angkutan Menurut Desa di Kecamatan Cianjur, 2020**
Number of Transportation Facilities by Village and Type of Transportation by Village in Cianjur Subdistrict, 2020

	Desa Village	Bus Bus	Truk Truck	Angkot Public Transportation	Ojek Taxibike	Delman Delman	Becak Pedicab
	(1)	(2)	(3)	(4)	(5)	(6)	(7)
1.	Nagrak	0	4	44	112	0	4
2.	Sukamaju	0	5	32	78	2	5
3.	Sayang	0	6	34	145	0	67
4.	Solokpandan	0	6	32	44	0	44
5.	Muka	0	6	35	34	0	123
6.	Bojongherang	0	6	36	36	22	45
7.	Pamoyanan	0	5	32	54	2	23
8.	Sawahgede	0	4	24	36	3	11
9.	Limbangansari	0	4	24	34	14	8
10.	Mekarsari	3	4	21	54	12	9
11.	Babakankaret	0	4	14	123	0	5
	Jumlah/Total	3	54	304	750	55	344

Sumber/Source: Profil Desa/Village Profile

Transportasi dan Pariwisata

Tabel
Table

8.1.2

**Jumlah Pengemudi Menurut Desa dan Jenis Angkutan
di Kecamatan Cianjur, 2020**
**Number of Driver by Village and Type of Transportation
in Cianjur Subdistrict, 2020**

	Desa Village	Sopir Driver	Ojek Motor Motorcycle Taxis	Tukang Becak Pedicab Driver	Tukang Delman Artisan Delman
	(1)	(2)	(3)	(4)	(5)
1.	Nagrak	52	112	4	2
2.	Sukamaju	23	60	5	4
3.	Sayang	77	123	34	0
4.	Solokpandan	44	46	32	0
5.	Muka	60	132	121	0
6.	Bojongherang	65	66	66	3
7.	Pamoyanan	32	34	34	4
8.	Sawahgede	24	34	35	4
9.	Limbangansari	44	36	36	12
10.	Mekarsari	45	37	32	11
11.	Babakankaret	21	66	43	0
	Jumlah/Total	487	746	442	40

Sumber/Source: Profil Desa/Village Profile

Transportation and Tourism

8.2 Pariwisata Tourism

Tabel
Table 8.2 Jumlah Restoran, Hotel, dan Penginapan Menurut Desa di Kecamatan Cianjur, 2020
Number of Restaurant, Hotel, and Lodging by Village in Cianjur Subdistrict, 2020

Desa Village	Restoran Restaurant	Hotel Hotel	Penginapan Lodging
(1)	(2)	(3)	(4)
1. Nagrak	13	0	0
2. Sukamaju	4	0	0
3. Sayang	14	1	0
4. Solokpandan	16	0	0
5. Muka	14	0	0
6. Bojongherang	12	2	1
7. Pamoyanan	17	1	1
8. Sawahgede	7	0	4
9. Limbangsari	6	1	0
10. Mekarsari	1	2	1
11. Babakankaret	0	1	0
Jumlah/Total	104	8	7

Sumber/Source: Profil Desa/Village Profile



09

KEUANGAN
FINANCE

<https://ianjurid.bps.go.id>

Finance

Tabel 9.1 **Jumlah Koperasi yang Masih Aktif Menurut Desa di Kecamatan Cianjur, 2020**
Number of Cooperation Still Active by Village in Cianjur Subdistrict, 2020

Desa Village	KUD Village Cooperation	Koperasi Industri Kecil Small Industrial Cooperative	Koperasi Simpan Pinjam Saving and Loan Cooperative	Koperasi Lainnya Other Cooperation
(1)	(2)	(3)	(4)	(5)
1. Nagrak	1	0	1	0
2. Sukamaju	0	0	0	0
3. Sayang	0	0	3	0
4. Solokpandan	0	0	0	0
5. Muka	0	0	1	0
6. Bojongherang	0	0	3	0
7. Pamoyanan	0	0	2	1
8. Sawahgede	0	0	0	0
9. Limbangsari	0	0	1	2
10. Mekarsari	0	0	3	0
11. Babakankaret	0	0	0	0
Jumlah/Total	1	0	14	3

Sumber/Source: Profil Desa/Village Profile

Tabel
Table

9.2

Jumlah Bank Umum dan Bank Perkreditan Rakyat (BPR)
Menurut Desa di Kecamatan Cianjur, 2020
Number of Commercial Bank and Rural Banks (BPR)
by Village in Cianjur Subdistrict, 2020

Desa Village		Bank Umum Commercial Bank	Bank Perkreditan Rakyat Rural Bank
(1)		(2)	(3)
1.	Nagrak	1	0
2.	Sukamaju	0	0
3.	Sayang	2	0
4.	Solokpandan	2	3
5.	Muka	13	3
6.	Bojongherang	5	3
7.	Pamoyanan	12	2
8.	Sawahgede	2	2
9.	Limbangansari	0	1
10.	Mekarsari	0	0
11.	Babakankaret	0	0
Jumlah/Total		37	14

Sumber/Source: Profil Desa/Village Profile

Finance

Tabel
Table

9.3

**Target dan Realisasi Pajak Bumi dan Bangunan
Menurut Desa di Kecamatan Cianjur, 2020
Target and Realization of Land and Building Tax
by Village in Cianjur Subdistrict, 2020**

	Desa Village	Target (Rp) Target (Rp)	Realisasi (Rp) Realization (Rp)	Persentase (%) Percentage (%)
	(1)	(2)	(3)	(4)
1.	Nagrak	379.634.914	265.744.440	70
2.	Sukamaju	160.039.645	160039645	100
3.	Sayang	720.589.649	401.611.097	55,73
4.	Solokpandan	330.474.364	268.155.174	80,18
5.	Muka	365.481.414	277.364.440	71,51
6.	Bojongherang	398.990.706	287.273.308	75,78
7.	Pamoyanan	420.547.145	285.338.720	67,85
8.	Sawahgede	446.333.996	290117097	65
9.	Limbangansari	301.484.000	179.040.741	67,83
10.	Mekarsari	269.471.258	164.373.392	70
11.	Babankaret	129.255.949	96.049.556	74,92
	Jumlah/Total	3.922.303.040	2.675.107.610	68,20

Sumber/Source: Profil Desa/Village Profile

Tabel
Table

9.4

**Jumlah Wajib Pajak dan Wajib Pajak Terbayar
Menurut Desa di Kecamatan Cianjur, 2020
Number of Taxpayers and Taxpayer Repaid
by Village in Cianjur Subdistrict, 2020**

	Desa Village	Wajib Pajak Taxpayers	Wajib Pajak Terbayar Taxpayer Repaid	Persentase (%) Percentage (%)
	(1)	(2)	(3)	(4)
1.	Nagrak	5.776	4.043	70
2.	Sukamaju	2.396	2391	100
3.	Sayang	7.056	3.932	55,73
4.	Solokpandan	2.493	1.999	80,18
5.	Muka	4.043	2.881	71,51
6.	Bojongherang	3.728	2.825	75,78
7.	Pamoyanan	3.252	1.369	67,85
8.	Sawahgede	3.637	2.364	65
9.	Limbangansari	3.419	2.319	67,83
10.	Mekarsari	3.808	2.666	70
11.	Babakankaret	3.147	2.358	74,92
	Jumlah/Total	26.605	29.147	68,20

Sumber/Source: Profil Desa/Village Profile

<https://cianjurkab.bps.go.id>

DATA

MENCERDASKAN BANGSA



**BADAN PUSAT STATISTIK
KABUPATEN CIANJUR**

Jl. Perintis Kemerdekaan No. 3, Cianjur

Telp: (0263) 264762 , Fax: (0263) 264762

Homepage: <https://cianjurkab.bps.go.id> E-mail: bps3203@bps.go.id