

Kecamatan

CILAMAYA WETAN DALAM ANGKA

Cilamaya Wetan Subdistrict in Figures

2022

<https://karawangkab.bps.go.id>



**Badan Pusat Statistik
Kabupaten Karawang**

BPS-Statistical of Karawang Regency

Kecamatan

CILAMAYA WETAN DALAM ANGKA

Cilamaya Wetan Subdistrict in Figures

2022

<https://karawangkab.bps.go.id>



KECAMATAN CILAMAYA WETAN DALAM ANGKA

Cilamaya Wetan Subdistrict in Figures

2022

ISSN : 2828-7371
Katalog/*Catalog* : 1102001.3215081
No. Publikasi/*Publication Number* : 32150.2207

Ukuran Buku/Book Size: 14,8 x 21 cm
Jumlah Halaman/Number of Pages: xvi + 84 halaman/*pages*

Naskah/Manuscript:
BPS Kabupaten Karawang/ *BPS-Statistics of Karawang Regency*

Penyunting/Editor:
BPS Kabupaten Karawang/ *BPS-Statistics of Karawang Regency*

Desain Kover oleh/Cover Designed by:
BPS Kabupaten Karawang/ *BPS-Statistics of Karawang Regency*

Penerbit/Published by:
© BPS Kabupaten Karawang/ *BPS-Statistics Karawang Regency*

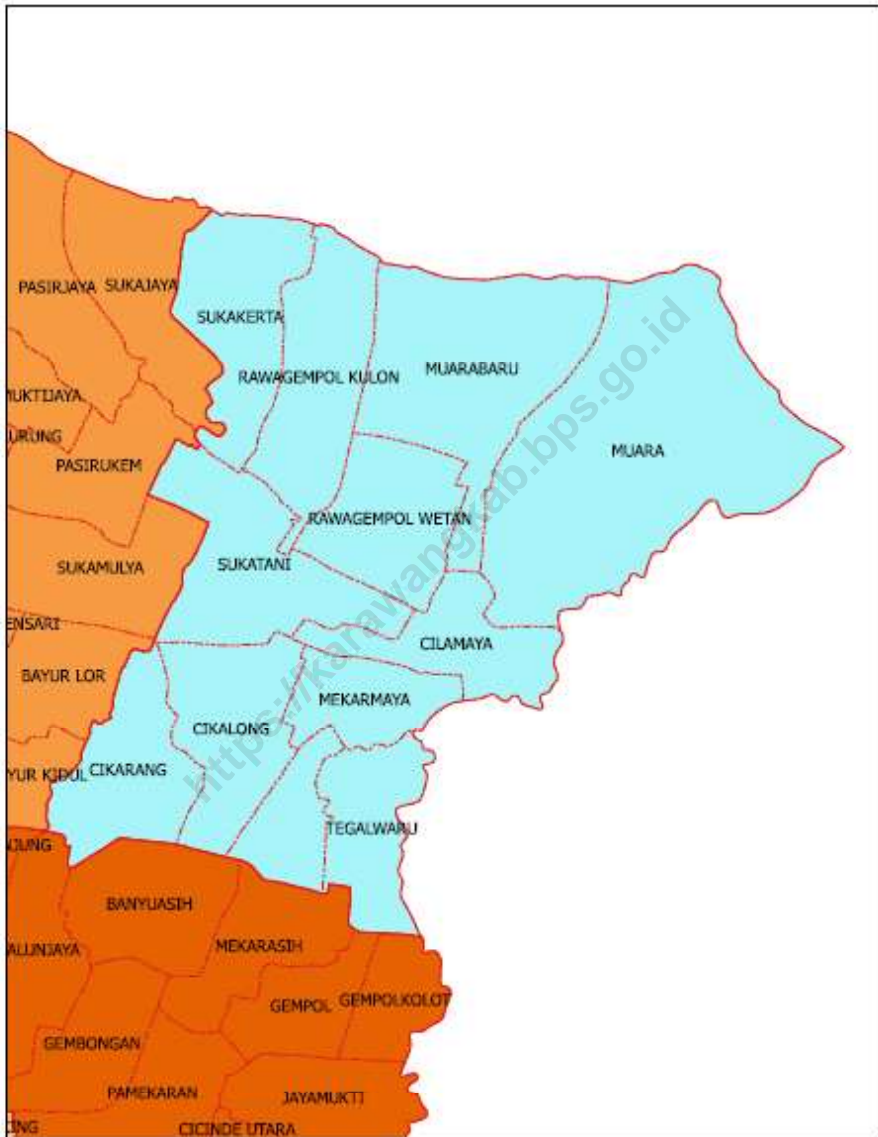
Pencetak/Printed by:
BPS Kabupaten Karawang/ *BPS-Statistics Karawang Regency*

Dilarang mengumumkan, mendistribusikan, mengkomunikasikan, dan/ atau menggandakan sebagian atau seluruh isi buku ini untuk tujuan komersial tanpa izin tertulis dari Badan Pusat Statistik

Prohibited to announce, distribute, communicate, and/or copy part of all this book for commercial purpose without permission from BPS-Statistics Indonesia

PETA KECAMATAN CILAMAYA WETAN

Map of Cilamaya Wetan Subdistrict



KEPALA BPS KABUPATEN KARAWANG
Chef Statistician of Karawang Regency



ROBERT RONYTUA PARDOSI

KATA PENGANTAR

“Kecamatan Cilamaya Wetan dalam Angka 2022” merupakan seri publikasi untuk masyarakat yang di dalamnya berisi tabel-tabel data statistik yang merupakan data sekunder yang bersumber dari instansi-instansi di lingkungan pemerintah daerah, instansi-instansi pemerintah maupun swasta yang berada di wilayah Kabupaten Karawang, khususnya di wilayah Kecamatan Cilamaya Wetan.

Kami menyadari bahwa dalam penyusunan publikasi ini masih terdapat kekurangan namun kami terus melakukan usaha-usaha peningkatan dan penyempurnaan luas cakupan, mutu, dan penyajiannya, sehingga diharapkan dapat memenuhi seluruh kebutuhan para pemakai data.

Kepada semua pihak yang telah membantu dalam penyelesaian publikasi ini diucapkan terima kasih. Saran dan kritik sangat diharapkan guna perbaikan pada penerbitan publikasi selanjutnya.

Karawang, September 2022

BPS Kabupaten Karawang

Kepala,



Robert Ronytua Pardosi

Preface

"Cilamaya Wetan Subdistrict in Figures 2022" is a series of publications for public in which contains statistical data tables which are secondary data sourced from agencies in the local government, government and private agencies in Karawang Regency, especially in Cilamaya Wetan Subdistrict.

We are aware that in the preparation of this publication there are still shortcomings but we continue to make efforts to improve, and improve the scope, quality, and presentation, so that it is expected to meet all the needs of data users.

Thank you to all those who have helped in the completion of this publication. We expect suggestions and criticisms for improvement in subsequent publication.

Karawang, September 2022

BPS Kabupaten Karawang

Chef Statistician,,



Robert Ronytua Pardosi

DAFTAR ISI/*Contents*

	Hal./Page
Peta Wilayah Kecamatan Cilamaya Wetan	iii
<i>Map of Karawang Regency</i>	iii
Kepala BPS Kabupaten Karawang	v
<i>Chief Statistian of Karawang Regency</i>	v
Kata Pengantar	vii
<i>Preface</i>	vii
Daftar Isi/ <i>Contents</i>	ix
Daftar Tabel/ <i>List of Tables</i>	x
Penjelasan Umum/ <i>Explanatory Notes</i>	xv
1. Kondisi Geografis dan Iklim/ <i>Gheograpy and Climate</i>	1
2. Sosial dan Kesejahteraan Rakyat/ <i>Social and Welfare</i>	11
3. Pertanian, Kehutanan, Peternakan, dan Perikanan/ <i>Agriculture, Forestry, Livestock, and Fishery</i>	25
4. Pariwisata, Hotel, Perdagangan, dan Transportasi dan Komunikasi/ <i>Tourism, Hotel, Trade, and Transportation and Communication</i>	42
5. Keuangan dan Keuangan Daerah/ <i>Finance and Regional Finance</i>	74

DAFTAR TABEL

	Hal./Page
Tabel 1.1.1	Luas Daerah menurut Kelurahan/Desa di kecamatan Cilamaya Wetan, 2021/ <i>Total Area by Village in Cilamaya Wetan Subdistrict, 2021</i> 4
Tabel 1.1.2	Letak Astromonis dan Jarak Tempuh ke Ibukota Kecamatan dan Ibukota Kabupaten menurut Desa di Kecamatan Cilamaya Wetan, 2021/ <i>Astronomical Location and Distance to Subdistrict Capital and Regency Capital by Village in Cilamaya Wetan Subdistrict, 2021</i> 5
Tabel 1.1.3	Letak Geografis dan Batas-Batas Menurut Arah Mata Angin menurut Desa di Kecamatan Cilamaya Wetan, 2021/ <i>Geographical Location and Boundaries According to Wind Direction by Village in Cilamaya Wetan Subdistrict, 2021</i> 6
Tabel 1.1.4	Topografi Wilayah Menurut Desa dan Jenis Klasifikasi di Kecamatan Cilamaya Wetan, 2021/ <i>Regional Topography by Village and Classification Type in Cilamaya Wetan Subdistrict, 2021</i> 7
Tabel 1.1.5	Tinggi Wilayah di Atas Permukaan Laut (meter DPL) menurut desa di Kecamatan Cilamaya Wetan, 2021/ <i>Region Height above Sea Level (meter DPL) by village in Cilamaya Wetan Subdistrict, 2021</i> 8
Tabel 1.1.6	Luas Wilayah dan Persentase terhadap Luas Kecamatan dan Kabupaten menurut desa di Kecamatan Cilamaya Wetan, 2021/ <i>Area and Percentage of Subdistrict and Regency Area by village in Cilamaya Wetan Subdistrict, 2021</i> 9
Tabel 1.2.1	Curah Hujan dan Jumlah Hari Hujan menurut Desa dan Bulan di Kecamatan Cilamaya Wetan, 2021/ <i>Rainfall and Number of Rainy Days by Village and Month in Cilamaya Wetan Subdistrict, 2021</i> 10
Tabel 2.1.1	Jumlah Fasilitas Sekolah Menurut Tingkat Pendidikan dan Desa di Kecamatan Cilamaya Wetan, 2019-2021/ <i>Number of Villages/Kelurahan Having Educational Facilities by Province and Educational Level, 2019-2021</i> 14
Tabel 2.2.1	Jumlah Desa/Kelurahan Yang Memiliki Sarana Kesehatan Menurut Kelurahan/Desa, 2019-2021/ <i>Number of Village Having Health Facilities by Kelurahan/Village, 2019-2021</i> 17
Tabel 2.2.2	Jumlah Tenaga Kesehatan Menurut Kelurahan/Desa, 2021/ <i>Number of Medicial Personnel by Kelurahan/Village, 2021</i> 20
Tabel 2.2.3	Jumlah Rumah Sakit Umum, Rumah Sakit Khusus, dan Puskesmas Menurut Kelurahan/Desa, 2019 dan 2021/ <i>Number of General Hospital, Special Hospital, and Public Health Center by Kelurahan/Village, 2019 and 2021</i> 21
Tabel 2.3.1	Jumlah Penduduk menurut Agama yang Dianut dan Desa di Kecamatan Cilamaya Wetan, 2021/ <i>Population by Kelurahan/Village and Religion, 2021</i> 23

Tabel 2.3.2	Jumlah Tempat Peribadatan Menurut Desa di Kecamatan Cilamaya Wetan, 2021/ <i>Number of Place of Worship by Kelurahan/Village and Religion, 2021</i>	24
Tabel 3.1.1	Luas Panen Tanaman Sayuran dan Buah-Buahan Semusim Menurut Jenis Tanaman (ha) di Kecamatan Cilamaya Wetan, 2016-2021/ <i>Harvested Area of Vegetables by Village and Kind of Plant (ton) in Cilamaya Wetan Subdistrict, 2019 and 2021</i>	28
Tabel 3.1.2	Produksi Tanaman Sayuran dan Buah-Buahan Semusim Menurut Jenis Tanaman (ha) di Kecamatan Cilamaya Wetan, 2019-2021/ <i>Harvested Area of Vegetables by Village and Kind of Plant (ha) in Cilamaya Wetan Subdistrict, 2019 and 2021</i>	29
Tabel 3.1.3	Luas Panen Tanaman Biofarmaka menurut Desa dan Jenis Tanaman (m ²) di Kecamatan Cilamaya Wetan, 2020 dan 2021/ <i>Harvested Area of Medicinal Plants by Village and Kind of Plant (m²) in Cilamaya Wetan Subdistrict, 2020 and 2021</i>	30
Tabel 3.1.4	Produksi Tanaman Biofarmaka menurut Desa dan Jenis Tanaman (kg) di Kecamatan Cilamaya Wetan, 2020 dan 2021/ <i>Production of Medicinal Plants by Village and Kind of Plant (kg) in Cilamaya Wetan Subdistrict, 2020 and 2021</i>	32
Tabel 3.1.5	Luas Panen Tanaman Biofarmaka Menurut Jenis Tanaman (m ²) di Kecamatan Cilamaya Wetan, 2019-2021/ <i>Harvested Area of Medicinal Plants by Kind of Plant (m²) in Cilamaya Wetan Subdistrict, 2019-2021</i>	34
Tabel 3.1.6	Produksi Tanaman Biofarmaka Menurut Jenis Tanaman (kg) di Kecamatan Cilamaya Wetan, 2019-2021/ <i>Production of Medicinal Plants by Kind of Plant (kg) in Cilamaya Wetan Subdistrict, 2019-2021</i>	35
Tabel 3.1.7	Produksi Buah-Buahan dan sayuran Tahunan Menurut Jenis Tanaman (ton) di Kecamatan Cilamaya Wetan, 2019-2021/ <i>Production of Annual Fruits and Vegetables by Kind of Plant (ton) in Cilamaya Wetan Subdistrict, 2019-2021</i>	36
Tabel 3.1.8	Produksi Buah-Buahan dan sayuran Tahunan Menurut Jenis Tanaman (ton) di Kecamatan Cilamaya Wetan, 2019-2021/ <i>Production of Annual Fruits and Vegetables by Kind of Plant (ton) in Cilamaya Wetan Subdistrict, 2019-2021</i>	38
Tabel 3.3.1	Luas Wilayah menurut Jenis Penggunaan Lahan dan Desa di Kecamatan Cilamaya Wetan, 2021/ <i>Area by Area of Land and Village Use in Cilamaya Wetan Subdistrict, 2021</i>	39
Tabel 3.3.2	Luas Lahan Sawah menurut Jenis Pengairan dan Desa di Kecamatan Cilamaya Wetan, 2021/ <i>Dryland Area by Type of Irrigation and Village in Cilamaya Wetan SubSubdistrict, 2021</i>	41
Tabel 4.1.1	Jumlah Rumah Makan/Restoran Menurut Desa di Kecamatan Cilamaya Wetan, 2019-2021/ <i>Number of Restaurants by Village in Cilamaya Wetan Subdistrict, 2019-2021</i>	45
Tabel 4.2.1	Jumlah Sarana Usaha Perdagangan menurut Jenis dan Desa di Kecamatan Cilamaya Wetan, 2021/ <i>Number of Trade Business Facilities by Type and Village in Cilamaya Wetan Subdistrict, 2021</i>	46

Tabel 4.2.2	Jumlah Sarana Perdagangan Komoditi Strategis menurut Jenis dan Desa di Kecamatan Cilamaya Wetan, 2021/ <i>Number of Strategic Commodity Trading Facilities by Type and Village in Cilamaya Wetan Subdistrict, 2021</i>	47
Tabel 4.2.3	Jumlah Unit Jasa Pendidikan Luar Sekolah menurut Desa di Kecamatan Cilamaya Wetan, 2021/ <i>Number of Non-School Education Services Units by Village in Cilamaya Wetan Subdistrict, 2021</i>	48
Tabel 4.2.4	Jumlah Unit Usaha Jasa Reparasi menurut Jenis dan Desa di Kecamatan Cilamaya Wetan, 2021/ <i>Number of Repair Service Business Units by Type and Village in Cilamaya Wetan Subdistrict, 2021</i>	49
Tabel 4.2.5	Jumlah Unit Usaha Jasa Persewaan menurut Desa di Kecamatan Cilamaya Wetan, 2021/ <i>Number of Rental Services Business Units by Village in Cilamaya Wetan Subdistrict, 2021</i>	50
Tabel 4.2.6	Jumlah Unit Usaha Jasa Lainnya menurut Desa di Kecamatan Cilamaya Wetan, 2021/ <i>Number of Other Service Business Units by Village in Cilamaya Wetan Subdistrict, 2021</i>	51
Tabel 4.2.7	Jumlah Unit Usaha Fotokopi dan Bengkel menurut Desa di Kecamatan Cilamaya Wetan, 2021/ <i>Number of Photocopying and Workshop Business Units by Village in Cilamaya Wetan Subdistrict, 2021</i>	52
Tabel 5.1.1	Luas Wilayah, Jumlah Rumah Tangga, Jumlah Penduduk, dan Tingkat Kepadatan Penduduk menurut Desa di Kecamatan Cilamaya Wetan, 2021/ <i>Area, Number of Households, Number of Population, and Population Density by Village in Cilamaya Wetan District, 2021</i>	56
Tabel 5.1.2	Jumlah Penduduk menurut Desa dan Jenis Kelamin, serta Sex Ratio di Kecamatan Cilamaya Wetan, 2021/ <i>Number of Population by Village and Gender, and Sex Ratio in Cilamaya Wetan District, 2021</i>	57
Tabel 5.1.3	Jumlah Penduduk Menurut Kelompok Umur di Kecamatan Cilamaya Wetan, 2021/ <i>Number of Populations by Age Group in Cilamaya Wetan District, 2021</i>	58
Tabel 5.1.4	Laju Pertumbuhan Penduduk menurut Desa di Kecamatan Cilamaya Wetan, 2019-2021/ <i>Population Growth Rate by Village in Cilamaya Wetan District, 2019-2021</i>	59
Tabel 5.2.1	Keberadaan Kantor PJTKI dan Agen Penyalur Tenaga Kerja menurut Desa di Kecamatan Cilamaya Wetan, 2021/ <i>Existence of Indonesian labor service providers Offices and Labor Distribution Agencies by Village in Cilamaya Wetan Subdistrict, 2021</i>	60
Tabel 5.2.2	Jumlah TKI menurut Desa dan Jenis Kelamin di Kecamatan Cilamaya Wetan, 2021/ <i>Number of Indonesian Migrant Workers by Village and Sex in Cilamaya Wetan Subdistrict, 2021</i>	61
Tabel 5.2.3	Jumlah TKI menurut Kawasan Negara Tujuan dan Desa di Kecamatan Cilamaya Wetan, 2021/ <i>Number of Indonesian Migrant Workers by Region of Destination Country and Village in Cilamaya Wetan Subdistrict, 2021</i>	62
Tabel 6.1	Keadaan Desa Berdasarkan Status Hukum di Kecamatan Cilamaya Wetan, 2021/ <i>Village Conditions Based on Legal Status in Cilamaya Wetan Subdistrict, 2021</i>	66
Tabel 6.2	Status dan Klasifikasi Desa di Kecamatan Cilamaya Wetan, 2021/ <i>Village Classification and Status in Cilamaya Wetan Subdistrict, 2021</i>	67
Tabel 6.3	Klasifikasi Desa di Kecamatan Cilamaya Wetan, 2021/ <i>Village Classification in Cilamaya Wetan Subdistrict, 2021</i>	68

Tabel 6.4	Banyaknya Dusun, Rukun Warga dan Rukun Tetangga menurut Desa di kecamatan Cilamaya Wetan, 2021/ <i>Number of hamlets, neighborhood groups and neighborhood units by village in Cilamaya Wetan sub-Subdistrict, 2021</i>	69
Tabel 6.5	Jumlah Hansip menurut Status Tugas dan desa di Kecamatan Cilamaya Wetan, 2021/ <i>Number of Hansip by Task Status and villages in Cilamaya Wetan Subdistrict, 2021</i>	70
Tabel 6.6	Jumlah Sarana Keamanan Lingkungan menurut Desa di Kecamatan Cilamaya Wetan, 2021/ <i>Number of Hansip by Task Status and villages in Cilamaya Wetan Subdistrict, 2021</i>	71
Tabel 6.7	Nama Kepala Desa, Umur, dan Pendidikan Tertinggi yang Ditamatkan menurut Desa di Kecamatan Cilamaya Wetan, 2021/ <i>Name of Village Head, Age, and Highest Education Completed by Village in Cilamaya Wetan Subdistrict, 2021</i>	72
Tabel 6.8	Keberadaan Lokasi Sarana Perkantoran menurut Desa di Kecamatan Cilamaya Wetan, 2021/ <i>Existence of Office Facilities Locations by Village in Cilamaya Wetan Subdistrict, 2021</i>	73
Tabel 7.1	Rincian Sumber Keuangan Pemerintahan Desa menurut Jenis dan Desa di Kecamatan Cilamaya Wetan, 2021/ <i>Details of Village Government Financial Sources by Type and Village in Cilamaya Wetan Subdistrict, 2021</i>	77
Tabel 7.1	Lanjutan / <i>Continued Table 7.1</i>	78
Tabel 7.2	Rincian Belanja Pengeluaran Keuangan Pemerintahan Desa menurut Jenis dan Desa di Kecamatan Cilamaya Wetan, 2021/ <i>Details of Village Government Financial Expenditures Spending by Type and Village in Cilamaya Wetan Subdistrict, 2021</i>	79
Tabel 7.2	Lanjutan / <i>Continued Table 7.2</i>	80
Tabel 7.3	Banyaknya Lembaga Keuangan menurut Jenis dan Desa di Kecamatan Cilamaya Wetan, 2021/ <i>Number of Financial Institutions by Type and Village in Cilamaya Wetan Subdistrict, 2021</i>	81

PENJELASAN UMUM/ EXPLANATORY NOTES

Tanda-tanda, satuan-satuan, dan lain-lainnya yang digunakan dalam publikasi ini adalah sebagai berikut:

Symbols, measurement units, and acronyms which are used in this publication, are as follows:

1. TANDA-TANDA/ SYMBOLS

Data tidak tersedia/ <i>Data not available</i>	: ...
Tidak ada atau nol/ <i>Null or zero</i>	: -
Data dapat diabaikan/ <i>Data negligible</i>	: 0
Tanda desimal/ <i>Decimal point</i>	: ,
Data tidak dapat ditampilkan/ <i>Not applicable</i>	: NA
Angka perkiraan/ <i>Estimated figures</i>	: e
Angka sementara/ <i>Preliminary figures</i>	: x
Angka sangat sementara/ <i>Very preliminary figures</i>	: xx
Angka diperbaiki/ <i>Revised figured</i>	: r

2. SATUAN/ UNITS

Barel/ <i>Barrel</i>	= 158,99 liter/ <i>litres</i> = 1/6,2898 m ³
Hektar (ha)/ <i>Hectare (ha)</i>	= 10 000 m ²
Kilometer (km)/ <i>Kilometers (km)</i>	= 1 000 meter/ <i>meters (m)</i>
Knot/ <i>Knot</i>	= 1,8523 km/jam (<i>km/hour</i>)
Kuintal/ <i>Quintal</i>	= 100 kg
KWh	= 1 000 Watt <i>hour</i>
MWh	= 1 000 KWh
Liter (untuk beras)/ <i>Litre (for rice)</i>	= 0,80 kg
Ons/ <i>Ounce</i>	= 28,31 gram/ <i>grams</i>
Ton	= 1 000 kg

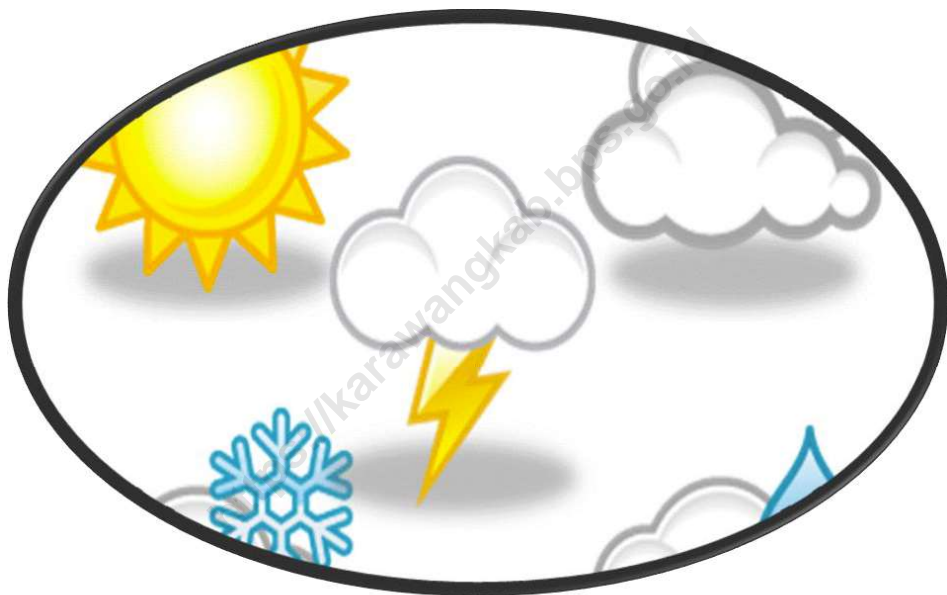
Satuan lain: buah, dus, butir, helai/lembar, kaleng, batang, pulsa, ton kilometer(ton-km), jam, menit, persen(%).

Other units: unit, pack, pieces, sheet, tin, pulse, ton-kilometres(ton-km), hour, minute, percent (%).

Perbedaan angka di belakang koma disebabkan oleh pembulatan angka.

The difference in decimal numbers is caused by rounding.

BAB 1
GEOGRAFI DAN IKLIM
GHEOGRAPHY AND CLIMATE



ULASAN

DESCRIPTION

Kecamatan Cilamaya Wetan merupakan kecamatan pemekaran dari Kecamatan Cilamaya yang terbagi menjadi Cilamaya Wetan dan Cilamaya Kulon.

Secara administratif, Kecamatan Cilamaya Wetan mempunyai batas-batas wilayah sebagai berikut:

- Sebelah Utara batas alam, yaitu Laut Jawa
- Sebelah Timur berbatasan dengan Kecamatan Blanakan Kabupaten Subang
- Sebelah Selatan berbatasan dengan Kecamatan Banyusari
- Sebelah Barat berbatasan dengan Kecamatan Cilamaya Kulon

Dengan luas wilayah 69.66 km² atau sekitar 3,97% dari total luas wilayah Kabupaten Karawang, Kecamatan Cilamaya Wetan merupakan salah satu wilayah yang berada di sepanjang pesisir laut Jawa yang berbatasan langsung dengan laut diantaranya Desa Muara, Desa Muara Baru, Desa Rawagempol Kulon serta Desa Sukakarta.

Wilayah desa yang terluas ialah Desa Muara yaitu sekitar 15,69 % atau sekitar 22,62 % dari total luas kecamatan yang mayoritas wilayahnya merupakan wilayah pertanian dan perikanan. Untuk desa yang memiliki luas wilayah terkecil ialah Desa Tegalsari yaitu sekitar 2,1 km² atau sekitar 3,03 % dari luas wilayah Kecamatan Cilamaya Wetan.

Cilamaya Wetan District is a subdistrict of Cilamaya District which is divided into Cilamaya Wetan and Cilamaya Kulon.

Administratively, Cilamaya Wetan District has the following boundaries:

- *North of the natural boundary, the Java Sea*
- *East side is bordered by Blanakan Sub-District, Subang Regency*
- *South side is bordered by Banyusari District*
- *West side is bordered by Cilamaya Kulon District*

With an area of 69.66 km² or around 3.97% of the total area of Karawang Regency, Cilamaya Wetan Subdistrict is one area along the coast of Java that is directly adjacent to the sea including Muara Village, Muara Baru Village, Rawagempol Kulon Village and Desa Sukakarta.

The largest village area is Muara Village, which is around 15.69% or around 22.62% of the total area of the sub-district, the majority of which are agricultural and fisheries. For villages that have the smallest area is Tegalsari Village, which is around 2.1 km² or around 3.03% of the area of Cilamaya Wetan District

1. Geografi dan Iklim/ *Geography and Climate*

1.1 Keadaan Geografi/ *Geography Condition*

Tabel 1.1.1 Luas Daerah menurut Kelurahan/Desa di kecamatan Cilamaya Wetan, 2021

Table 1.1.1 Total Area by Village in Cilamaya Wetan Subdistrict, 2021

Desa/ Village		Luas ¹ (km ²) Total Area 1 (square.km)	Persentase terhadap Luas Kecamatan Percentage to Sub District's Area
(1)	(2)	(3)	(3)
1	Cikarang	3,23	4,66
2	Cikalong	3,82	5,51
3	Tegalsari	2,1	3,03
4	Tegalwaru	3,87	5,58
5	Mekarmaya	4,05	5,84
6	Cilamaya	4,06	5,85
7	Sukatani	7,58	10,93
8	Sukakerta	7,32	10,55
9	Rawagempol Kulon	5,48	7,90
10	Rawagempol Wetan	4,78	6,89
11	Muara Baru	7,38	10,64
12	Muara	15,69	22,62
Cilamaya Wetan		69,36	100,00

Catatan/Note: 1Berdasarkan Peraturan Menteri dalam negeri Nomor 137 Tahun 2019 tanggal 29 Desember 2019/
Based on Minister of Home Affairs Regulation Number 137/2019, December 29, 2019

Sumber/ Source: Kementerian dalam Negeri/ Ministry of Home Affairs

Tabel 1.1.2 Letak Astromonis dan Jarak Tempuh ke Ibukota Kecamatan dan Ibukota Kabupaten menurut Desa di Kecamatan Cilamaya Wetan, 2021

Table 1.1.2 Astronomical Location and Distance to Subdistrict Capital and Regeny Capital by Village in Cilamaya Wetan Subdistrict, 2021

	Desa/ Village	Letak Astronomis/ Astronomy Location	Jarak ke (Km)/ Distance to	
			Ibukota Kecamatan/ Subdistrict Capital	Ibukota Kabupaten/ Regeny Capital
	(1)	(2)	(3)	(4)
001	Cikarang	6,28900 LS 107,5366 BT	5	43
002	Cikalong	6,26494 LS 107,5539 BT	4	44
003	Tegalsari	6,26655 LS 107,5603 BT	3	43
004	Tegalwaru	6,27048 LS 107,5683 BT	2	42
005	Mekarmaya	6,24860 LS 107,5822 BT	1	44
006	Cilamaya	6,24860 LS 107,5908 BT	2	40
007	Sukatani	6,23924 LS 107,5588 BT	4	42
008	Sukakerta	6,21414 LS 107,5554 BT	6	46
009	Rawagempol Kulon	6,22510 LS 107,5657 BT	5	45
010	Rawagempol Wetan	6,23590 LS 107,5789 BT	4	43
011	Muara Baru	6,20788 LS 107,5937 BT	6	47
012	Muara	6,22637 LS 107,6195 BT	7	56

Sumber/ Source: BPS, Pendataan Potensi Desa (Podes) 2021/BPS-Statistics Indonesia, Village Potential Data Collection, 2021

Tabel 1.1.3 Letak Geografis dan Batas-Batas Menurut Arah Mata Angin menurut Desa di Kecamatan Cilamaya Wetan, 2021

Table 1.1.3 Geographical Location and Boundaries According to Wind Direction by Village in Cilamaya Wetan Subdistrict, 2021

Desa/ Village		Batas Sebelah			
		Utara/ Northern Border	Selatan/ Southern Border	Barat/ Western Border	Timur/ Eastern Border
(1)	(2)	(3)	(4)	(5)	
001	Cikarang	Desa Sukatani	Kec. Banyusari	Desa Bayur Lor	Desa Cikalong
002	Cikalong	Desa Sukatani	Kec. Banyusari	Desa Cikarang	Desa Tegalsari
003	Tegalsari	Desa Mekarmaya	Kec. Banyusari	Kec. Banyusari	Desa Tegalwaru
004	Tegalwaru	Desa Mekarmaya	Kec. Banyusari	Desa Tegalsari	Kab. Subang
005	Mekarmaya	Desa Cilamaya	Desa Tegawaru, Desa Tegalsari	Desa Sukatani	Kab. Subang
006	Cilamaya	Desa Muara	Desa Mekarmaya	Desa Rawagempol Wetan	Kab. Subang
007	Sukatani	Desa Rawagempol Kulon dan Sukakerta	Desa Cikalong dan Cikarang	Kec. Cilamaya Kulon	Desa Mekarmaya
008	Sukakerta	Laut Jawa	Desa Sukatani	Kec. Cilamaya Kulon	Desa Rawagempol Kulon
009	Rawagempol Kulon	Laut Jawa	Desa Sukatani	Desa Sukakerta	Desa Rawagempol Wetan
010	Rawagempol Wetan	Desa Muarabaru	Desa Sukatani	Desa Rawagempol Kulon	Desa Cilamaya
011	Muara Baru	Laut Jawa	Desa Rawagempol Wetan	Desa Rawagempol Kulon	Desa Muara
012	Muara	Laut Jawa	Desa Cilamaya	Desa Muarabaru	Kab. Subang

Sumber/ Source: Kantor Desa di Kecamatan Cilamaya Wetan/ Village Office in Cilamaya Wetan Subdistrict

Tabel 1.1.4 Topografi Wilayah Menurut Desa dan Jenis Klasifikasi di Kecamatan Cilamaya Wetan, 2021

Table 1.1.4 Regional Topography by Village and Classification Type in Cilamaya Wetan Subdistrict, 2021

		Pola Hamparan/ <i>Overlay Pattern</i>				
Desa/ <i>Village</i>	Pesisir/ <i>Coast</i>	Non Pesisir/ <i>Non Coastal</i>	Dataran/ <i>Plain</i>	Lereng/ <i>Slope</i>	Perbukitan/ <i>Hills</i>	
(1)	(2)	(3)	(4)	(5)	(6)	
001	Cikarang	-	√	√	-	-
002	Cikalong	-	√	√	-	-
003	Tegalsari	-	√	√	-	-
004	Tegalwaru	-	√	√	-	-
005	Mekarmaya	-	√	√	-	-
006	Cilamaya	-	√	√	-	-
007	Sukatani	-	√	√	-	-
008	Sukakerta	√	-	√	-	-
009	Rawagempol Kulon	√	-	√	-	-
010	Rawagempol Wetan	-	√	√	-	-
011	Muara Baru	√	-	√	-	-
012	Muara	√	-	√	-	-

Sumber/ Source: BPS, Pendataan Potensi Desa (Podes) 2021/BPS-Statistics Indonesia, Village Potential Data Collection, 2021

Tabel 1.1.5 Tinggi Wilayah di Atas Permukaan Laut (meter DPL) menurut desa di Kecamatan Cilamaya Wetan, 2021

Table 1.1.5 Region Height above Sea Level (meter DPL) by village in Cilamaya Wetan Subdistrict, 2021

Desa/ Village		Tinggi / Height (meter DPL)
<i>(1)</i>		<i>(2)</i>
001	Cikarang	31,3
002	Cikalong	26,8
003	Tegalsari	22,6
004	Tegalwaru	16,1
005	Mekarmaya	33,7
006	Cilamaya	23,6
007	Sukatani	19,1
008	Sukakerta	24,1
009	Rawagempol Kulon	20,6
010	Rawagempol Wetan	28,6
011	Muara Baru	28,6
012	Muara	18,9

Sumber/ Source: Kantor Desa di Kecamatan Cilamaya Wetan/ Village Office in Cilamaya Wetan Subdistrict

Tabel 1.1.6 Luas Wilayah dan Persentase terhadap Luas Kecamatan dan Kabupaten menurut desa di Kecamatan Cilamaya Wetan, 2021

Table 1.1.6 Area and Percentage of Subdistrict and Regency Area by village in Cilamaya Wetan Subdistrict, 2021

Desa/ Village		Luas Desa (km ²) / Area (kilometers square)	Persentase terhadap Luas Kecamatan/ Percentage of Subdistrict Area	Persentase terhadap Luas Kabupaten/ Percentage of Regency Area
(1)	(2)	(3)	(4)	(5)
001	Cikarang	3,23	4,66	0,18
002	Cikalong	3,82	5,51	0,22
003	Tegalsari	2,1	3,03	0,12
004	Tegalwaru	3,87	5,58	0,22
005	Mekarmaya	4,05	5,84	0,23
006	Cilamaya	4,06	5,85	0,23
007	Sukatani	7,58	10,93	0,43
008	Sukakerta	7,32	10,55	0,42
009	Rawagempol Kulon	5,48	7,90	0,31
010	Rawagempol Wetan	4,78	6,89	0,27
011	Muara Baru	7,38	10,64	0,42
012	Muara	15,69	22,62	0,89
Cilamaya Wetan		69,36	100,00	3,96

Sumber/Source: Kantor Desa di Kecamatan Cilamaya Wetan/ Village Office in Cilamaya Wetan Subdistrict

1.2 Iklim/ Climate

Tabel 1.2.1 Curah Hujan dan Jumlah Hari Hujan menurut Desa dan Bulan di Kecamatan Cilamaya Wetan, 2021

Table 1.2.1 Rainfall and Number of Rainy Days by Village and Month in Cilamaya Wetan Subdistrict, 2021

Bulan/ Month	Curah Hujan / Rainfall (mm)	Jumlah Hari Hujan/ Total of Rainy Days
(1)	(2)	(3)
Januari/ January	317.0	16.0
Februari/ February	515.0	22.0
Maret/ March	180.0	15.0
April	77.0	6.0
Mei/ May	194.0	4.0
Juni/ June	29.0	5.0
Juli/ July	29.0	2.0
Agustus/ August	13.0	1.0
September	57.0	6.0
Oktober/ October	94.0	6.0
November	220.0	11.0
Desember/ December	66.0	8.0
Cilamaya Wetan	1.791.0	102.0

Sumber/Source: Dinas Pertanian Karawang/Department of Agriculture in Karawang Regency

BAB 2

SOSIAL DAN KESEJAHTERAAN RAKYAT

SOCIAL AND WELFARE



ULASAN

DESCRIPTION

Kecamatan Cilamaya Wetan memiliki sarana pendidikan dan kesehatan yang lengkap di hampir setiap desa yang ada di Kecamatan Cilamaya Wetan ini. Setiap Desa hamper memiliki fasilitas pendidikan mulai dari pendidikan anak usia dini (PAUD), Taman Kanak – Kanak (TK), Sekolah Dasar (SD) baik itu negeri atau swasta terdapat di setiap desa. Terkecuali untuk fasilitas pendidikan Sekolah Lanjutan Tingkat Pertama (SLTP/ sederajat) hampir semua desa memilikinya kecuali Desa Cikarang, Desa Cilamaya, Desa Sukakarta dan Desa Muara yang tidak memilikinya. Lain lagi dengan fasilitas pendidikan Sekolah Menengah Tingkat Atas (SMU/MA/SMK) hanya ada 8 fasilitas yang ada di Kecamatan Cilamaya Wetan yang terbagi atas Desa Tegalsari, Desa Tegalwaru, Desa Mekarmaya, Desa Cilamaya, Desa Sukatani dan Desa Muara yang memiliki fasilitas ini. Belum terdapat fasilitas pendidikan perguruan tinggi di Kecamatan Cilamaya Wetan.

Untuk fasilitas kesehatan belum ada fasilitas rumah sakit di Kecamatan Cilamaya Wetan ini, yang ada hanya Puskesmas, Rumah Sakit Bersalin, Poliklinik dan Puskesmas Pembantu yang ada. Selain itu untuk sarana peribadatan di wilayah Kecamatan Cilamaya Wetan sudah tersedia Mushola dan Masjid diseluruh wilayah desa disini, selain itu terdapat sarana peribadatan Gereja Kristen Protestan dan Gereja Kristen Katolik yang ada di Desa Cilamaya, selain itu belum terdapat sarana peribadatan untuk Umat Beragama Lainnya.

Cilamaya Wetan District has complete education and health facilities in almost every village in the Cilamaya Wetan District. Each village almost has educational facilities ranging from early childhood education (PAUD), kindergarten (kindergarten), elementary school (SD) whether public or private in every village. Except for the education facilities for junior high schools (SLTP / equivalent) almost all villages have it except Cikarang Village, Cilamaya Village, Sukakarta Village and Muara Village that do not have it. Another with high school education facilities (SMU / MA / SMK) there are only 8 facilities in the District of Cilamaya Wetan which are divided into Tegalsari Village, Tegalwaru Village, Mekarmaya Village, Cilamaya Village, Sukatani Village and Muara Village which have these facilities . There are no tertiary education facilities yet in Cilamaya Wetan District.

For health facilities there are no hospital facilities in Cilamaya Wetan Subdistrict, only Puskesmas, Maternity Hospital, Polyclinic and Supporting Puskesmas. In addition to the means of worship in the district of Cilamaya Wetan there are prayer rooms and mosques throughout the village area here, in addition there are facilities for worship of the Protestant Christian Church and the Catholic Christian Church in Cilamaya Village, besides that there are no worship facilities for other religious communities

2 Sosial dan Kesejahteraan Rakyat/Social and Welfare

2.1 Pendidikan/Education

Tabel 2.1.1 Jumlah Fasilitas Sekolah Menurut Kelurahan/Desa dan Tingkat Pendidikan, 2019-2021
Table 2.1.1 Number of Villages/Kelurahan Having Educational Facilities by Province and Educational Level, 2019-2021

	Kelurahan/Desa Regency/Minucipality	SD Primary School			SMP Junior High School		
		2019	2020	2021	2019	2020	2021
	(1)	(2)	(3)	(4)	(5)	(6)	(7)
1	Cikarang	2	2	2	-	-	-
2	Cikalong	3	3	3	1	1	1
3	Tegalsari	2	2	2	1	1	1
4	Tegalwaru	4	4	4	1	1	1
5	Mekarmaya	2	2	2	2	2	2
6	Cilamaya	7	7	8	-	-	-
7	Sukatani	3	3	3	3	3	3
8	Sukakerta	4	4	4	-	-	-
9	Rawagempol Kulon	2	2	2	1	1	1
10	Rawagempol Wetan	2	2	2	1	1	1
11	Muara Baru	3	3	3	1	1	1
12	Muara	2	2	2	-	-	-
	Cilamaya Wetan	36	36	36	11	11	11

Catatan/Note: ¹Desa pada tabel ini termasuk Unit Pemukiman Transmigrasi (UPT) yang masih dibina oleh kementerian terkait dan nagari di Provinsi Sumatera Barat/Village in this table include Transmigration Settlement Unit which is still fostered by the relevant ministries and the nagari in the Province of Sumatera Barat

Sumber/ Source: BPS, Pendataan Potensi Desa (Podes) 2021/BPS-Statistics Indonesia, Village Potential Data Collection, 2021

Lanjutan tabel/ *Continued Table 2.1.1*

	Kelurahan/Desa <i>Regency/Minucipality</i>	SMA <i>Senior High School</i>			SMK <i>Vocational School</i>		
		2019	2020	2021	2019	2020	2021
	(1)	(8)	(9)	(10)	(11)	(12)	(13)
1	Cikarang	-	-	-	-	-	-
2	Cikalong	-	-	-	-	-	-
3	Tegalsari	-	-	-	2	2	2
4	Tegalwaru	-	-	-	1	1	1
5	Mekarmaya	1	1	1	1	1	1
6	Cilamaya	-	-	-	1	1	1
7	Sukatani	3	3	3	-	-	-
8	Sukakerta	-	-	-	-	-	-
9	Rawagempol Kulon	-	-	-	-	-	-
10	Rawagempol Wetan	-	-	-	-	-	-
11	Muara Baru	1	1	1	-	-	-
12	Muara	-	-	-	-	-	-
	Cilamaya Wetan	5	5	5	5	5	5

Catatan/Note: ¹Desa pada tabel ini termasuk Unit Pemukiman Transmigrasi (UPT) yang masih dibina oleh kementerian terkait dan nagari di Provinsi Sumatera Barat/*Village in this table include Transmigration Settlement Unit which is still fostered by the relevant ministries and the nagari in the Province of Sumatera Barat*

Sumber/ Source: BPS, Pendataan Potensi Desa (Podes) 2021/*BPS-Statistics Indonesia, Village Potential Data Collection, 2021*

Lanjutan tabel/ *Continued Table 2.1.1*

Kelurahan/Desa <i>Kelurahan/Village</i>		Perguruan Tinggi/ <i>University</i>		
		2019	2020	2021
(1)		(14)	(15)	(16)
1	Cikarang	-	-	-
2	Cikalong	-	-	-
3	Tegalsari	-	-	-
4	Tegalwaru	-	-	-
5	Mekarmaya	-	-	-
6	Cilamaya	-	-	-
7	Sukatani	-	-	-
8	Sukakerta	-	-	-
9	Rawagempol Kulon	-	-	-
10	Rawagempol Wetan	-	-	-
11	Muara Baru	-	-	-
12	Muara	-	-	-
Cilamaya Wetan		-	-	-

Catatan/*Note*: ¹Desa pada tabel ini termasuk Unit Pemukiman Transmigrasi (UPT) yang masih dibina oleh kementerian terkait dan nagari di Provinsi Sumatera Barat/*Village in this table include Transmigration Settlement Unit which is still fostered by the relevant ministries and the nagari in the Province of Sumatera Barat*

Sumber/*Source*: BPS, Pendataan Potensi Desa (Podes) 2021/*BPS-Statistics Indonesia, Village Potential Data Collection, 2021*

2.2 Kesehatan/Health

Tabel 2.2.1 **Jumlah Desa/Kelurahan Yang Memiliki Sarana Kesehatan Menurut Kelurahan/Desa, 2019-2021**
Table 2.2.1 **Number of Village Having Health Facilities by Kelurahan/Village, 2019-2021**

	Kelurahan/Desa Regency/Municipality	Rumah Sakit Hospital			Rumah Sakit Bersalin Maternity Hospital		
		2019	2020	2021	2019	2020	2021
	(1)	(2)	(3)	(4)	(5)	(6)	(7)
1	Cikarang	-	-	-	-	-	-
2	Cikalong	-	-	-	-	-	-
3	Tegalsari	-	-	-	-	-	-
4	Tegalwaru	-	-	-	-	-	-
5	Mekarmaya	-	-	-	-	-	-
6	Cilamaya	-	-	-	-	-	-
7	Sukatani	-	-	-	-	-	-
8	Sukakerta	-	-	-	-	-	-
9	Rawagempol Kulon	-	-	-	-	-	-
10	Rawagempol Wetan	-	-	-	-	-	-
11	Muara Baru	-	-	-	-	-	-
12	Muara	-	-	-	-	-	-
	Cilamaya Wetan	-	-	-	-	-	-

Catatan/Note:

¹Desa pada tabel ini termasuk Unit Pemukiman Transmigrasi (UPT) yang masih dibina oleh kementerian terkait dan nagari di Provinsi Sumatera Barat/Village in this table include Transmigration Settlement Unit which is still fostered by the relevant ministries and the nagari in the Province of Sumatera Barat

Sumber/ Source:

BPS, Pendataan Potensi Desa (Podes) 2021/BPS-Statistics Indonesia, Village Potential Data Collection, 2021

Lanjutan tabel/ *Continued Table 2.2.1*

	Kelurahan/Desa <i>Regency/Minucipality</i>	Poliklinik <i>Polyclinic</i>			Puskesmas <i>Public Health Center</i>		
		2019	2020	2021	2019	2020	2021
	(1)	(8)	(9)	(10)	(11)	(12)	(13)
1	Cikarang	-	-	-	-	-	-
2	Cikalong	1	1	2	-	-	-
3	Tegalsari	-	-	-	-	-	-
4	Tegalwaru	3	3	3	-	-	-
5	Mekarmaya	1	1	1	-	-	-
6	Cilamaya	1	1	2	1	1	1
7	Sukatani	-	-	2	1	1	1
8	Sukakerta	-	-	1	-	-	-
9	Rawagempol Kulon	1	1	2	-	-	-
10	Rawagempol Wetan	2	2	3	-	-	-
11	Muara Baru	-	-	-	-	-	-
12	Muara	-	-	-	-	-	-
Cilamaya Wetan		9	9	16	2	2	2

Catatan/Note: ¹Desa pada tabel ini termasuk Unit Pemukiman Transmigrasi (UPT) yang masih dibina oleh kementerian terkait dan nagari di Provinsi Sumatera Barat/*Village in this table include Transmigration Settlement Unit which is still fostered by the relevant ministries and the nagari in the Province of Sumatera Barat*

Sumber/ Source: BPS, Pendataan Potensi Desa (Podes) 2021/*BPS-Statistics Indonesia, Village Potential Data Collection, 2021*

Lanjutan tabel/ *Continued Table 2.2.1*

	Kelurahan/Desa <i>Regency/Minucipality</i>	Puskesmas Pembantu <i>Subsidiary of Public Health Center</i>			Apotek <i>Pharmacy</i>		
		2019	2020	2021	2019	2020	2021
	(1)	(14)	(15)	(16)	(17)	(18)	(19)
1	Cikarang	-	-	-	1	1	1
2	Cikalong	1	1	1	1	1	2
3	Tegalsari	-	-	-	-	-	-
4	Tegalwaru	-	-	-	2	2	2
5	Mekarmaya	-	-	-	1	1	1
6	Cilamaya	-	-	-	1	1	3
7	Sukatani	-	-	-	1	1	1
8	Sukakerta	-	-	-	1	1	1
9	Rawagempol Kulon	-	-	-	2	2	3
10	Rawagempol Wetan	-	-	-	1	1	1
11	Muara Baru	1	1	1	-	-	-
12	Muara	-	-	-	-	-	-
	Cilamaya Wetan	2	2	2	11	11	14

Catatan/Note:

¹Desa pada tabel ini termasuk Unit Pemukiman Transmigrasi (UPT) yang masih dibina oleh kementerian terkait dan nagari di Provinsi Sumatera Barat/*Village in this table include Transmigration Settlement Unit which is still fostered by the relevant ministries and the nagari in the Province of Sumatera Barat*

Sumber/ Source:

BPS, Pendataan Potensi Desa (Podes) 2021/BPS-Statistics Indonesia, *Village Potential Data Collection, 2021*

Tabel 2.2.2 **Jumlah Tenaga Kesehatan Menurut Kelurahan/Desa, 2021**
Table 2.2.2 **Number of Medical Personnel by Kelurahan/Village, 2021**

	Kelurahan/Desa <i>Kelurahan/Village</i>	Dokter <i>Doctor</i>	Perawat <i>Nurse</i>	Bidan <i>Midwife</i>	Farmasi <i>Pharmaceutical</i>	Ahli Gizi <i>Nutritionist</i>
	(1)	(2)	(3)	(4)	(5)	(6)
1	Cikarang	-	1	4	-	-
2	Cikalong	1	3	4	-	-
3	Tegalsari	1	3	3	-	-
4	Tegalwaru	3	3	4	-	-
5	Mekarmaya	3	5	3	-	-
6	Cilamaya	2	7	5	-	-
7	Sukatani	-	6	6	-	-
8	Sukakerta	-	-	2	-	-
9	Rawagempol Kulon	1	2	2	-	-
10	Rawagempol Wetan	-	2	4	-	-
11	Muara Baru	-	-	1	-	-
12	Muara	-	-	1	-	-
	Cilamaya Wetan	11	31	38	-	-

Catatan/Note:

Sumber/ Source: BPS, Pendataan Potensi Desa (Podes) 2021/BPS-Statistics Indonesia, Village Potential Data Collection, 2021

Tabel 2.2.3 Jumlah Rumah Sakit Umum, Rumah Sakit Khusus, dan Puskesmas Menurut Kelurahan/Desa, 2019 dan 2021
Table *Number of General Hospital, Special Hospital, and Public Health Center by Kelurahan/Village, 2019 and 2021*

	Kelurahan/Desa <i>Regency/Minucipality</i>	Rumah Sakit Umum <i>General Hospital</i>		Rumah Sakit Khusus <i>Special Hospital</i>		Rumah Sakit Bersalin/Rumah Bersalin <i>Maternity Hospital</i>		Puskesmas <i>Public Health Center</i>	
		2020	2021	2020	2021	2020	2021	2020	2021
		(1)	(2)	(3)	(4)	(5)	(6)	(7)	(8)
1	Cikarang	-	-	-	-	-	-	-	-
2	Cikalong	-	-	-	-	-	-	-	-
3	Tegalsari	-	-	-	-	-	-	-	-
4	Tegalwaru	-	-	-	-	-	-	-	-
5	Mekarmaya	-	-	-	-	-	-	-	-
6	Cilamaya	-	-	-	-	-	-	1	1
7	Sukatani	-	-	-	-	-	-	1	1
8	Sukakerta	-	-	-	-	-	-	-	-
9	Rawagempol Kulon	-	-	-	-	-	-	-	-
10	Rawagempol Wetan	-	-	-	-	-	-	-	-
11	Muara Baru	-	-	-	-	-	-	-	-
12	Muara	-	-	-	-	-	-	-	-
	Cilamaya Wetan	-	-	-	-	-	-	2	2

Catatan/Note:

Sumber/ Source:

BPS, Pendataan Potensi Desa (Podes) 2021/BPS-Statistics Indonesia, Village Potential Data Collection, 2021

Lanjutan tabel/ *Continued Table 2.2.3*

	Kelurahan/Desa <i>Kelurahan/Village</i>	Klinik/Balai Kesehatan <i>Clinic/Health Center</i>		Posyandu <i>Maternal & Child Health Center</i>		Polindes <i>Village Maternity</i>	
		2020	2021	2020	2021	2020	2021
	(1)	(10)	(11)	(12)	(13)	(14)	(15)
1	Cikarang	-	0	6	6	-	-
2	Cikalong	-	2	4	4	-	-
3	Tegalsari	-	0	5	5	-	-
4	Tegalwaru	-	3	7	7	-	-
5	Mekarmaya	-	1	7	7	-	-
6	Cilamaya	-	2	10	10	-	-
7	Sukatani	-	2	6	6	-	-
8	Sukakerta	-	0	4	4	-	-
9	Rawagempol Kulon	-	2	4	4	-	-
10	Rawagempol Wetan	-	2	4	5	-	-
11	Muara Baru	-	0	3	4	-	-
12	Muara	-	0	6	5	-	-
	Cilamaya Wetan	-	14	66	66	-	-

Catatan/Note:

Sumber/ Source: BPS, Pendataan Potensi Desa (Podes) 2021/BPS-Statistics Indonesia, Village Potential Data Collection, 2021

2 Sosial dan Kesejahteraan Rakyat/Social and Welfare
2.3.1 Agama dan Sosial Lainnya/Religion and Other Social Affairs

Tabel 2.3.1 Jumlah Penduduk Menurut Kelurahan/Desa dan Agama yang Dianut, 2021
Table Population by Kelurahan/Village and Religion, 2021

	Kelurahan/Desa Kelurahan/Village	Islam	Protestan Protestant	Katolik Catholic	Hindu	Budha Buddha	Lainnya Others
	(1)	(2)	(3)	(4)	(5)	(6)	(7)
1	Cikarang	7 409	-	-	-	-	-
2	Cikalong	4 346	-	-	-	-	-
3	Tegalsari	4 897	-	-	-	-	-
4	Tegalwaru	7 596	20	6	-	-	-
5	Mekarmaya	7 488	55	30	-	-	-
6	Cilamaya	12 865	50	40	10	5	2
7	Sukatani	8 005	-	-	-	-	-
8	Sukakerta	6 151	-	-	-	-	-
9	Rawagempol Kulon	6 121	-	-	-	-	-
10	Rawagempol Wetan	5 984	-	-	-	-	-
11	Muara Baru	3 749	-	-	-	-	-
12	Muara	4 749	-	-	-	-	-
	Cilamaya Wetan	79 360	125	76	13	7	5

Catatan/Note:

Sumber/ Source: Disdukcatpil Karawang/Population and Civil Registration Agency of Karawang

Tabel 2.3.2 Jumlah Tempat Peribadatan Menurut Kelurahan/Desa, 2021
Table Number of Place of Worship by Kelurahan/Village and Religion, 2021

	Kelurahan/Desa <i>Kelurahan/Village</i>	Masjid <i>Mosque</i>	Mushola <i>Pray Room</i>	Gereja Protestas <i>Protestant Church</i>	Gereja Katholik <i>Catholic Church</i>	Pura <i>Temple</i>	Viraha
	(1)	(2)	(3)	(4)	(5)	(6)	(7)
1	Cikarang	3	27	-	-	-	-
2	Cikalong	3	14	-	-	-	-
3	Tegalsari	3	14	-	-	-	-
4	Tegalwaru	5	27	-	-	-	-
5	Mekarmaya	8	22	1	-	-	-
6	Cilamaya	8	22	1	-	-	-
7	Sukatani	7	29	-	-	-	-
8	Sukakerta	3	25	-	-	-	-
9	Rawagempol Kulon	2	29	-	-	-	-
10	Rawagempol Wetan	3	12	-	-	-	-
11	Muara Baru	3	11	-	-	-	-
12	Muara	5	15	-	-	-	-
	Cilamaya Wetan	53	243	2	-	-	-

Catatan/Note:

Sumber/ Source: BPS, Pendataan Potensi Desa (Podes) 2021/BPS-Statistics Indonesia, Village Potential Data Collection, 2021

BAB 3

**PERTANIAN, KEHUTANAN,
PETERNAKAN DAN PERIKANAN**

*AGRICULTURE, FORESTRY, LIVESTOCK AND
FISHERIES*



ULASAN

Kecamatan Cilamaya Wetan merupakan wilayah yang mayoritas lahannya merupakan lahan pertanian yang diusahakan sebagai persawahan, dari luas wilayahnya 69,36 km² sebesar 41,38 km² merupakan luas areal persawahan yang mayoritas ditanami tanaman padi sawah yang terbagi di seluruh wilayah desa di Kecamatan Cilamaya Wetan ini. Untuk luasan wilayah kolam/tambak hanya terdapat di dua desa yaitu Desa Muara Baru dan Desa Muara yaitu sebesar 10,10 km². Selain tanaman padi yang menjadi primadona di wilayah ini, ada beberapa tanaman jamur yang banyak diusahakan warga masyarakat dan juga buah-buahan seperti manga, pisang dan papaya yang banyak diusahakan warga masyarakatnya. Untuk perikanan ada 3 Tempat Pelelangan Ikan (TPI) yang ada di Kecamatan Cilamaya Wetan yaitu TPI Samudra Mina di Desa Muara, TPI Praubosok di Desa Muara Baru, serta TPI Tengkolak di Desa Sukakarta.

DESCRIPTION

Cilamaya Wetan Subdistrict is an area whose majority of land is agricultural land which is cultivated as paddy fields, from its area of 69.36 km² of 41.38 km² is the area of paddy area which is majority planted with lowland rice plants which are divided throughout the village area in the subdistrict of Cilamaya Wetan. For the area of ponds / ponds, there are only two villages, namely Muara Baru Village and Muara Village, which are 10.10 km². In addition to the excellent rice plants in this region, there are a number of mushroom plants that are cultivated by many people and also fruits such as manga, bananas and papaya which are cultivated by the people. For fisheries there are 3 Fish Auction Places (TPI) in Cilamaya Wetan Subdistrict namely Samudra Mina TPI in Muara Village, Praubosok TPI in Muara Baru Village, and TPI Tengkolak in Sukakarta Village.

3 Pertanian, Kehutanan, Peternakan, dan Perikanan/Agriculture, Forestry, Livestock, and Fishery

3.1 Hortikultura/Horticulture

Tabel 3.1.1 Luas Panen Tanaman Sayuran dan Buah-Buahan Semusim Menurut Jenis Tanaman (ha) di Kecamatan Cilamaya Wetan, 2020-2021
Table 3.1.1 *Harvested Area of Vegetables by Village and Kind of Plant (ton) in Cilamaya Wetan Subdistrict, 2020 and 2021*

Jenis Tanaman Kind of Plants	2019	2020	2021
(1)	(2)	(3)	(4)
JAMUR	103 580	110.500	424 748
Cilamaya Wetan	225 480	103 580	424 748

Catatan/Note:

Sumber/ Source: BPS, Statistik Pertanian Hortikultura SPH-SBS/BPS-Statistics Indonesia, Agricultural Statistics for Horticulture SPH-SBS

Tabel 3.1.2 **Produksi Tanaman Sayuran dan Buah-Buahan Semusim Menurut Jenis Tanaman (ton) di Kecamatan Cilamaya Wetan, 2019 - 2021**
Table **Harvested Area of Seasonal Vegetables and Fruits by Kind of Plant (ha) in Cilamaya Wetan Subdistrict, 2019 - 2021**

Jenis Tanaman <i>Kind of Plants</i>	2019	2020	2021
(1)	(2)	(3)	(4)
JAMUR	255 484	206 000	11 769

Cilamaya Wetan	255 484	206 000	11 769
-----------------------	----------------	----------------	---------------

Catatan/Note:

Sumber/ Source: BPS, Statistik Pertanian Hortikultura SPH-SBS/BPS-Statistics Indonesia, Agricultural Statistics for Horticulture SPH-SBS

Tabel
Table

3.1.3

Luas Panen Tanaman Biofarmaka menurut Desa dan Jenis Tanaman (m²) di Kecamatan Cilamaya Wetan, 2020 dan 2021
Harvested Area of Medicinal Plants by Village and Kind of Plant (m²) in Cilamaya Wetan Subdistrict, 2020 and 2021

	Desa <i>Village</i>	Jahe/ <i>Ginjer</i>		Laos/Lengkuas/ <i>Galanga</i>	
		2020	2021	2020	2021
	(1)	(2)	(3)	(4)	(5)
001	Cikarang
002	Cikalong
003	Tegalsari
004	Tegalwaru
005	Mekarmaya
006	Cilamaya
007	Sukatani
008	Sukakerta
009	rawagempol Kulon
010	Rawagempol Wetan
011	Muara Baru
012	Muara
	Cilamaya Wetan	0,00	0,00	0,00	0,00

Catatan/*Note*:

Sumber/*Source*:

BPS, Statistik Pertanian Hortikultura SPH-SBS/*BPS-Statistics Indonesia, Agricultural Statistics for Horticulture SPH-SBS*

Lanjutan tabel/ *Continued Table 3.1.3*

	Desa Village	Kencur/ <i>East Indian Galangal</i>		Kunyit/ <i>Turmeric</i>	
		2020	2021	2020	2021
	(1)	(6)	(7)	(8)	(9)
001	Cikarang
002	Cikalong
003	Tegalsari
004	Tegalwaru
005	Mekarmaya
006	Cilamaya
007	Sukatani
008	Sukakerta
009	rawagempol Kulon
010	Rawagempol Wetan
011	Muara Baru
012	Muara
	Cilamaya Wetan	0,00	0,00	0,00	0,00

Catatan/Note:

Sumber/ Source:

BPS, Statistik Pertanian Hortikultura SPH-SBS/BPS-Statistics Indonesia, Agricultural Statistics for Horticulture SPH-SBS

Tabel
Table

3.1.4

Produksi Tanaman Biofarmaka menurut Desa dan Jenis Tanaman (kg) di Kecamatan Cilamaya Wetan, 2020 dan 2021

Production of Medicinal Plants by Village and Kind of Plant (kg) in Cilamaya Wetan Subdistrict, 2020 and 2021

	Desa <i>Village</i>	Jahe/ <i>Ginjer</i>		Laos/Lengkuas/ <i>Galanga</i>	
		2020	2021	2020	2021
	(1)	(2)	(3)	(4)	(5)
001	Cikarang
002	Cikalong
003	Tegalsari
004	Tegalwaru
005	Mekarmaya
006	Cilamaya
007	Sukatani
008	Sukakerta
009	rawagempol Kulon
010	Rawagempol Wetan
011	Muara Baru
012	Muara
Cilamaya Wetan		0,00	0,00	0,00	0,00

Catatan/*Note*:

Sumber/*Source*:

BPS, Statistik Pertanian Hortikultura SPH-SBS/*BPS-Statistics Indonesia, Agricultural Statistics for Horticulture SPH-SBS*

Lanjutan tabel/ *Continued Table 3.1.4*

	Desa <i>Village</i>	Kencur/ <i>East Indian Galangal</i>		Kunyit/ <i>Turmeric</i>	
		2020	2021	2020	2021
	(1)	(6)	(7)	(8)	(9)
001	Cikarang
002	Cikalong
003	Tegalsari
004	Tegalwaru
005	Mekarmaya
006	Cilamaya
007	Sukatani
008	Sukakarta
009	rawagempol Kulon
010	Rawagempol Wetan
011	Muara Baru
012	Muara
Cilamaya Wetan		0,00	0,00	0,00	0,00

Catatan/*Note*:

Sumber/*Source*:

BPS, Statistik Pertanian Hortikultura SPH-SBS/BPS-Statistics Indonesia, *Agricultural Statistics for Horticulture SPH-SBS*

Tabel 3.1.5 **Luas Panen Tanaman Biofarmaka Menurut Jenis Tanaman (m²) di Kecamatan Cilamaya Wetan, 2020 - 2021**
Table 3.1.5 **Harvested Area of Medicinal Plants by Kind of Plant (m²) in Cilamaya Wetan Subdistrict, 2020 - 2021**

	Jenis Tanaman <i>Kind of Plants</i>	2019	2020	2021
	(1)	(3)	(4)	(5)
1	Kunyit	0	0	0
2	Lengkuas/Laos	0	0	0
3	Mahkota Dewa	0	0	0
4	Mengkudu/Pace	0	0	0
Cilamaya Wetan		0	0	0

Catatan/Note:

Sumber/ Source: BPS, Statistik Pertanian Hortikultura SPH-SBS/BPS-Statistics Indonesia, Agricultural Statistics for Horticulture SPH-SBS

Tabel
Table

3.1.6

Produksi Tanaman Biofarmaka Menurut Jenis Tanaman (kg) di Kecamatan Cilamaya Wetan, 2020 - 2021
Production of Medicinal Plants by Kind of Plant (kg) in Cilamaya Wetan Subdistrict, 2020 – 2021

	Jenis Tanaman Kind of Plants	2019	2020	2021
	(1)	(3)	(4)	(5)
1	Kunyit	0	0	0
2	Lengkuas/Laos	0	0	0
3	Mahkota Dewa	0	0	0
4	Mengkudu/Pace	0	0	0
Cilamaya Wetan		0	0	0

Catatan/Note:

Sumber/ Source:

BPS, Statistik Pertanian Hortikultura SPH-SBS/BPS-Statistics Indonesia, Agricultural Statistics for Horticulture SPH-SBS

Tabel
Table

3.1.7

Produksi Buah-Buahan dan sayuran Tahunan Menurut Jenis Tanaman (ton) di Kecamatan Cilamaya Wetan, 2020 - 2021
Production of Annual Fruits and Vegetables by Kind of Plant (ton) in Cilamaya Wetan Subdistrict, 2020 – 2021

	Desa Village	Mangga/Mango		Durian/Durian		Jeruk/Orange	
		2020	2021	2020	2021	2020	2021
		(1)	(2)	(3)	(4)	(5)	(6)
001	Cikarang
002	Cikalong
003	Tegalsari
004	Tegalwaru
005	Mekarmaya
006	Cilamaya
007	Sukatani
008	Sukakerta
009	rawagempol Kulon
010	Rawagempol Wetan
011	Muara Baru
012	Muara
Cilamaya Wetan		0	6 970	0	0	0	0

Catatan/Note:

Sumber/ Source:

BPS, Statistik Pertanian Hortikultura SPH-SBS/BPS-Statistics Indonesia, Agricultural Statistics for Horticulture SPH-SBS

Lanjutan tabel/ *Continued Table 3.1.7*

Desa <i>Village</i>		Pisang/ <i>Banana</i>		Pepaya/ <i>Papaya</i>		Salak/ <i>Salacca</i>	
		2020	2021	2020	2021	2020	2021
(1)		(8)	(9)	(10)	(11)	(12)	(13)
001	Cikarang
002	Cikalong
003	Tegalsari
004	Tegalwaru
005	Mekarmaya
006	Cilamaya
007	Sukatani
008	Sukakerta
009	rawagempol Kulon
010	Rawagempol Wetan
011	Muara Baru
012	Muara
Cilamaya Wetan		0	2 050	0	0	0	0

Catatan/Note:

Sumber/ Source:

BPS, Statistik Pertanian Hortikultura SPH-SBS/BPS-Statistics Indonesia, Agricultural Statistics for Horticulture SPH-SBS

Tabel
Table

3.1.8

Produksi Buah-Buahan dan sayuran Tahunan Menurut Jenis Tanaman (ton) di Kecamatan Cilamaya Wetan, 2020 – 2021
Production of Annual Fruits and Vegetables by Kind of Plant (ton) in Cilamaya Wetan Subdistrict, 2020 - 2021

Jenis Tanaman <i>Kind of Plants</i>		2019	2020	2021
(1)	(3)	(4)	(5)	
1	Mangga/ <i>manggo</i>	0	0	6 970
2	Pisang/ <i>banana</i>	0	0	2 050
3	Pepaya/ <i>papaya</i>	0	0	0
Cilamaya Wetan		-	-	0 9 020

Catatan/Note:

Sumber/ Source:

BPS, Statistik Pertanian Hortikultura SPH-SBS/BPS-Statistics Indonesia, *Agricultural Statistics for Horticulture SPH-SBS*

3.3 Pertanian/ Agriculture

Tabel 3.3.1 Luas Wilayah menurut Jenis Penggunaan Lahan dan Desa di Kecamatan Cilamaya Wetan, 2021

Table 3.3.1 Area by Area of Land and Village Use in Cilamaya Wetan Subdistrict, 2021

Lahan Yang Diusahakan/ Land cultivated						
Desa/ Village	Luas Total (Km2)/ Total Area	Sawah/ Paddy Field	Perkebunan/ Plantation	Hutan/ Forest	Kolam/ Empang/ Tambak/ Pool / pond	Industri/ Industry
[1]	[2]	[3]	[4]	[5]	[6]	[7]
001 Cikarang	3,23	2,39	0,03			
002 Cikalong	3,82	2,60				
003 Tegalsari	2,1	0,98	0,09			
004 Tegalwaru	3,87	2,80				
005 Mekarmaya	4,05	2,20				
006 Cilamaya	4,06	2,00	0,18			
007 Sukatani	7,58	5,50				
008 Sukakerta	7,32	4,10				
009 Rawagempol Kulon	5,48	4,35	0,18			
010 Rawagempol Wetan	4,78	3,58				
011 Muara Baru	7,38	3,82	0,10		2,00	
012 Muara	15,69	7,06			8,10	
Cilamaya Wetan	69,36	41,38	0,58	0,00	10,10	0,00

Sumber/Source:

Kantor
Desa

Tabel 3.3.1 Lanjutan
Table 3.3.1 Continued

Lahan Yang Tidak Diusahakan/ Non-cultivated land						
Desa/ Village	Rawa/ Situ/ Swamp / Situ	Padang Rumput/ Meadow	Hutan Negara/ State Forest	Permukiman (Tempat Tinggal, Perkantoran & Pekarangannya)/ Settlement	Lainnya/ Others	
[1]	[8]	[9]	[10]	[11]	[12]	
001	Cikarang			0,81		
002	Cikalong			1,22		
003	Tegalsari			1,03		
004	Tegalwaru			1,07		
005	Mekarmaya			1,85		
006	Cilamaya			1,88		
007	Sukatani			2,08		
008	Sukakarta			3,22		
009	Rawagempol Kulon			0,95		
010	Rawagempol Wetan			1,20		
011	Muara Baru			1,46		
012	Muara			0,53		
Cilamaya Wetan		0,00	0,00	0,00	17,30	0,00

Sumber/Source:

Kantor Desa

Tabel 3.3.2 Luas Lahan Sawah menurut Jenis Pengairan dan Desa di Kecamatan Cilamaya Wetan, 2021
Table 3.3.2 Dryland Area by Type of Irrigation and Village in Cilamaya Wetan SubSubdistrict, 2021

Desa/ Village	Irigasi/ Irrigation				Non Irigasi Lainnya/ Other Non-Irrigation				
	Teknis / Technical	½ Teknis/ Technical	Non Teknis/ Non Technical	Total	Tadah Hujan/ Rainfed	Pasang Surut/ Tidal	Rembe san/ Lebak/ Seepage	Lain nya/ Others	Total
[1]	[2]	[3]	[4]	[5]	[6]	[7]	[8]	[9]	[10]
001 Cikarang	2,39								2,39
002 Cikalong	2,60								2,60
003 Tegalsari	0,98								0,98
004 Tegalwaru	2,80								2,80
005 Mekarmaya	2,20								2,20
006 Cilamaya	2,00								2,00
007 Sukatani	5,50								5,50
008 Sukakerta	4,10								4,10
009 Rawagempol Kulon	4,35								4,35
010 Rawagempol Wetan	3,58								3,58
011 Muara Baru	3,82								3,82
012 Muara	7,06								7,06
Cilamaya Wetan	41,38	0	0	0	0	0	0	0	41,38

Sumber/Source:

Kantor Desa

BAB 4
PARIWISATA, HOTEL,
PERDAGANGAN, TRANSPORTASI,
KOMUNIKASI

Tourism, Hotel, Trade,
Transportation and Communication



ULASAN

DESCRIPTION

Kecamatan Cilamaya Wetan merupakan wilayah yang berpotensi menjadi salah satu wilayah objek pariwisata air atau pantai yang dapat dikembangkan. Salah satunya adalah wisata hutan mangrove yang dapat dikembangkan oleh pemerintah untuk mendorong sektor ini dapat maju dan berkembang. Hal ini dapat ditunjang dengan cukup semaraknya swalayan/minimarket yang ada di hampir setiap wilayah dan juga terdapatnya pasar daerah yang cukup ramai sebagai sentra perdagangan warga Cilamaya Wetan bahkan orang-orang Kecamatan Blanakan Subang banyak yang berbelanja kesini.

Cilamaya Wetan Subdistrict is an area that has the potential to become one of the areas where water or beach tourism can be developed. One of them is mangrove forest tourism which can be developed by the government to encourage this sector to progress and develop. This can be supported by the lively supermarkets / minimarkets that exist in almost every region and also the presence of a fairly crowded regional market as a trading center for residents of Cilamaya Wetan and even the people of Blanakan Subang Subdistrict are shopping here.

4. Pariwisata, Hotel, Perdagangan, Transportasi dan Komunikasi/ *Tourism, Hotel, Trade, Transportation and Communication*

4.1 Pariwisata/Tourism

Tabel 4.1.1 Jumlah Rumah Makan/Restoran Menurut Desa di Kecamatan Cilamaya Wetan, 2018 - 2021

Table 4.1.1 Number of Restaurants by Village in Cilamaya Wetan Subdistrict, 2018 - 2021

	Desa/ Village	2018	2019	2020	2021
	(1)	(2)	(3)	(4)	(5)
001	Cikarang	-	-	-	-
002	Cikalong	-	-	-	-
003	Tegalsari	-	-	-	-
004	Tegalwaru	-	-	-	-
005	Mekarmaya	-	-	-	1
006	Cilamaya	-	-	-	-
007	Sukatani	-	-	-	-
008	Sukakerta	-	-	-	-
009	Rawagempol Kulon	-	-	-	-
010	Rawagempol Wetan	-	-	-	-
011	Muara Baru	-	-	-	-
012	Muara	-	-	-	-
	Cilamaya Wetan	-	-	-	1

Catatan/Note:

Sumber/ Source: BPS, Pendataan Potensi Desa (Podes) 2021/BPS-Statistics Indonesia, Village Potential Data Collection, 2021

4.2 Perdagangan/ Trade

Tabel 4.2.1 Jumlah Sarana Usaha Perdagangan menurut Jenis dan Desa di Kecamatan Cilamaya Wetan, 2021
Table 4.2.1 Number of Trade Business Facilities by Type and Village in Cilamaya Wetan Subdistrict, 2021

	Desa/ Village	Supermarket/ Hipermarket/ Supermarkets / Hypermarkets	Swalayan/ Minimarket	Toko/ Warung Aneka Barang/ Kelontong/ Shops / Food Stalls/ Grocery	Pasar Tradisional/ Traditional Markets	Pasar Pekanan/ Weekly Market	Lainnya/ Others
	[1]	[2]	[3]	[4]	[5]	[6]	[7]
001	Cikarang	-	1	23	-	-	-
002	Cikalong	-	2	18	1	-	-
003	Tegalsari	-	1	32	-	-	-
004	Tegalwaru	-	3	30	-	-	-
005	Mekarmaya	-	3	107	-	-	-
006	Cilamaya	-	5	175	1	-	-
007	Sukatani	-	4	50	-	-	-
008	Sukakerta	-	2	16	-	-	-
009	Rawagempol Kulon	-	1	22	-	-	-
010	Rawagempol Wetan	-	1	13	-	-	-
011	Muara Baru	-	-	12	-	-	-
012	Muara	-	-	10	-	-	-
	Cilamaya Wetan	-	23	508	3	0	0

Sumber/Source: BPS, Pendataan Potensi Desa (Podes) 2021/BPS-Statistics Indonesia, Village Potential Data Collection, 2021

Tabel 4.2.2 Jumlah Sarana Perdagangan Komoditi Strategis menurut Jenis dan Desa di Kecamatan Cilamaya Wetan, 2021

Table 4.2.2 Number of Strategic Commodity Trading Facilities by Type and Village in Cilamaya Wetan Subdistrict, 2021

	Desa/ Village	SPBU/ Gas station	SPPBE/ LPG Bulk Filling and Transport Station	Pangkalan Minyak Tanah/ Kerosene Base	Pasar Induk/ Central Market	Pelelangan Ikan/ Fish auction	Pasar Ternak/ Livestock Market	Lainnya/ Others
	[1]	[2]	[3]	[4]	[5]	[6]	[7]	[8]
001	Cikarang	-	-	-	-	-	-	-
002	Cikalong	-	-	-	-	-	-	-
003	Tegalsari	-	-	-	-	-	-	-
004	Tegalwaru	-	-	-	-	-	-	-
005	Mekarmaya	1	-	-	-	-	-	-
006	Cilamaya	-	1	-	-	-	-	-
007	Sukatani	-	-	-	-	-	-	-
008	Sukakerta	-	-	-	-	1	-	-
009	Rawagempol Kulon	1	-	-	-	-	-	-
010	Rawagempol Wetan	-	-	-	-	-	-	-
011	Muara Baru	-	-	-	-	1	-	-
012	Muara	-	-	-	-	1	-	-
	Cilamaya Wetan	2	1	-	-	3	-	-

Sumber/Source: BPS, Pendataan Potensi Desa (Podes) 2021/BPS-Statistics Indonesia, Village Potential Data Collection, 2021

Tabel 4.2.3 Jumlah Unit Jasa Pendidikan Luar Sekolah menurut Desa di Kecamatan Cilamaya Wetan, 2021
Table 4.2.3 Number of Non-School Education Services Units by Village in Cilamaya Wetan Subdistrict, 2021

	<i>Desa/ Village</i>	<i>Pontren/ Islamic Boarding School</i>	<i>Kursus Ketrampilan/ Vocational Course</i>	<i>Kursus Bahasa/ Language course</i>	<i>Bimbingan Belajar/ Tutoring</i>	<i>Lainnya/ Others</i>	<i>Jumlah/ Total</i>
	[1]	[2]	[3]	[4]	[5]	[6]	[7]
001	Cikarang	1	-	-	-	-	1
002	Cikalong	-	-	-	-	-	-
003	Tegalsari	1	-	-	-	-	1
004	Tegalwaru	-	-	-	-	-	-
005	Mekarmaya	-	-	-	-	-	-
006	Cilamaya	-	-	-	-	-	-
007	Sukatani	2	-	-	-	-	2
008	Sukakerta	1	-	-	-	-	1
009	Rawagempol Kulon	1	-	-	-	-	1
010	Rawagempol Wetan	-	-	-	-	-	-
011	Muara Baru	-	-	-	-	-	-
012	Muara	-	-	-	-	-	-
	Cilamaya Wetan	6	-	-	-	-	6

Sumber/Source:

BPS, Pendataan Potensi Desa (Podes) 2021/BPS-Statistics Indonesia, Village Potential Data Collection, 2021

Tabel 4.2.4 Jumlah Unit Usaha Jasa Reparasi menurut Jenis dan Desa di Kecamatan Cilamaya Wetan, 2021

Table 4.2.4 Number of Repair Service Business Units by Type and Village in Cilamaya Wetan Subdistrict, 2021

	Desa/ Village	Alat Elektronik/ Electronic devices	Perkakas Rumah Tangga/ Home Appliances	Mesin & Peralatan Teknik/ Mechanical Engineering & Equipment	Perhiasan/ Jewelry	Lainnya/ Others	Jumlah/ Total
	[1]	[2]	[3]	[4]	[5]	[6]	[7]
001	Cikarang	3	-	-	-	-	3
002	Cikalong	2	-	-	-	-	2
003	Tegalsari	2	-	-	-	-	2
004	Tegalwaru	5	-	-	3	-	8
005	Mekarmaya	8	-	-	-	-	8
006	Cilamaya	12	-	-	-	-	12
007	Sukatani	3	-	-	-	-	3
008	Sukakarta	5	-	-	-	-	5
009	Rawagempol Kulon	2	-	-	-	-	2
010	Rawagempol Wetan	1	-	-	-	-	1
011	Muara Baru	1	-	-	-	-	1
012	Muara	2	-	-	-	-	2
	Cilamaya Wetan	46	0	0	3	0	49

Sumber/Source: BPS, Pendataan Potensi Desa (Podes) 2021/BPS-Statistics Indonesia, Village Potential Data Collection, 2021

Tabel 4.2.5 Jumlah Unit Usaha Jasa Persewaan menurut Desa di Kecamatan Cilamaya Wetan, 2021
Table 4.2.5 Number of Rental Services Business Units by Village in Cilamaya Wetan Subdistrict, 2021

	Desa/ Village	Rumah Kost/ Kontrakan / Boarding House/ Rent	Aula/ Gedung/ Hall / Building	Kendaraan / Vehicle	Mesin & Peralatan Teknik/ Mechanical Engineering & Equipment	Komputer & Alat Elektronik/ Compu ters & Electroni c Devi ces	Alat Perlen gkapan Pesta/ Party Supplies	Sarana Hiburan/ Entert ainme nt faci lity	Lain nya / Oth ers	Jumlah/ Total
	[1]	[2]	[3]	[4]	[5]	[6]	[7]	[8]	[9]	[10]
001	Cikarang	-	-	-	-	-	-	-	-	0
002	Cikalong	-	-	-	-	-	-	-	-	0
003	Tegalsari	-	-	-	-	-	-	-	-	0
004	Tegalwaru	-	-	-	-	-	-	-	-	0
005	Mekarmaya	50	-	-	-	-	-	-	-	50
006	Cilamaya	65	-	-	-	-	-	-	-	65
007	Sukatani	-	-	-	-	-	-	-	-	0
008	Sukakarta	-	-	-	-	-	-	-	-	0
009	Rawagempol Kulon	-	-	-	-	-	-	-	-	0
010	Rawagempol Wetan	-	-	-	-	-	-	-	-	0
011	Muara Baru	-	-	-	-	-	-	-	-	0
012	Muara	-	-	-	-	-	-	-	-	0
	Cilamaya Wetan	115	0	0	0	0	0	0	0	115

Sumber/Source: Kantor Desa di Kecamatan Cilamaya Wetan/ Village Office in Cilamaya Wetan Subdistrict

Tabel 4.2.6 Jumlah Unit Usaha Jasa Lainnya Menurut Desa di Kecamatan Cilamaya Wetan, 2021
Table 4.2.6 Number of Other Service Business Units by Village in Cilamaya Wetan Subdistrict, 2021

Desa/ Village	Penyalur Tenaga Kerja/ Employment Agency	Advokat/ Pengacara/ LBH/ Advocate/ Lawyer/ Legal Aide/ Institute	Notaris/ PPAT/ Notary/ Land Deed Making Officer	Salon Kecantikan/ Beauty salon	Pangkas Rambut/ Haircut	Perpustakaan/ Library	Taman Bacaan / Reading Park	Lainnya/ Others	Jumlah/ Total
001 Cikarang	-	-	-	1	2	-	-	-	3
002 Cikalong	-	-	-	-	2	-	-	-	2
003 Tegalsari	-	-	-	1	2	-	-	-	3
004 Tegalwaru	-	-	-	1	2	-	-	-	3
005 Mekarmaya	-	-	-	2	6	-	-	-	8
006 Cilamaya	-	-	-	4	7	-	-	-	11
007 Sukatani	-	-	-	-	4	-	-	-	4
008 Sukakerta	-	-	-	1	3	-	-	-	4
009 Rawagempol Kulon	-	-	-	1	2	-	-	-	3
010 Rawagempol Wetan	-	-	-	-	5	-	-	-	5
011 Muara Baru	-	-	-	-	5	-	-	-	5
012 Muara	-	-	-	1	2	-	-	-	3
Cilamaya Wetan	0	0	0	12	42	0	0	0	54

Sumber/Source:

Kantor Desa di Kecamatan Cilamaya Wetan/ Village Office in Cilamaya Wetan Subdistrict

Tabel 4.2.7 Jumlah Unit Usaha Fotokopi dan Bengkel menurut Desa di Kecamatan Cilamaya Wetan, 2021
Table 4.2.7 Number of Photocopying and Workshop Business Units by Village in Cilamaya Wetan Subdistrict, 2021

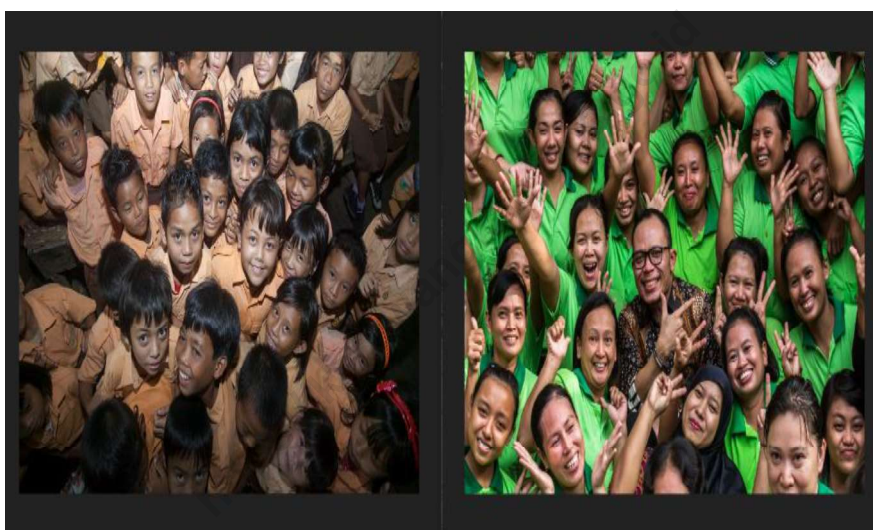
	Desa/ Village	Foto kopi/ Photocopy	Bengkel Sepeda/ Becak/ Bicycle / Pedicab Repair Shop	Bengkel Motor/ Bike Repair shop	Bengkel Mobil/ Car repair shop	Bengkel Perahu/ Kapal/ Boat Repair Shop
	[1]	[2]	[3]	[4]	[5]	[6]
001	Cikarang	1	1	5	-	-
002	Cikalong	-	1	2	-	-
003	Tegalsari	1	3	3	-	-
004	Tegalwaru	1	1	7	-	-
005	Mekarmaya	2	3	11	-	-
006	Cilamaya	2	7	15	-	-
007	Sukatani	1	1	6	-	-
008	Sukakerta	1	3	5	-	-
009	Rawagempol Kulon	2	3	4	-	-
010	Rawagempol Wetan	1	-	2	-	-
011	Muara Baru	-	2	2	-	-
012	Muara	-	1	2	-	-
	Cilamaya Wetan	12	26	64	0	0

Sumber/Source: BPS, Pendataan Potensi Desa (Podes) 2021/BPS-Statistics Indonesia, Village Potential Data Collection, 2021

BAB 5

KEPENDUDUKAN DAN KETENAGAKERJAAN

Population and Employment



ULASAN

DESCRIPTION

Kecamatan Cilamaya Wetan merupakan salah satu wilayah yang memiliki jumlah penduduk terbanyak di Kabupaten Karawang ini, untuk data tahun 2022 ini Kecamatan Cilamaya Wetan memiliki jumlah penduduk sekitar 83.606 penduduk yang terdiri dari 41.911 penduduk laki-laki dan 42.258 penduduk perempuan dengan jumlah KK sebanyak 26.664 rumah tangga, serta untuk laju pertumbuhan penduduk dari tahun 2020 sampai sekarang selalu mengalami kenaikan.

Selain itu di Kecamatan Cilamaya Wetan ini memiliki beberapa kantor PJTKI yang menjadi salah satu tujuan warga masyarakat untuk mencari pekerjaan diluar negeri. Jumlah Tenaga Kerja Indonesia per tahun 2022 ini menurut hasil dari setiap desa ada sekitar 1.187 orang yang bekerja di luar negeri baik itu pria maupun wanita diseluruh dunia, akan tetapi mayoritas bekerja di wilayah Asia dan Arab/Timur Tengah.

Cilamaya Wetan Subdistrict is one of the regions that has the most population in Karawang Regency. For 2022 data, Cilamaya Wetan Subdistrict has a population of around 83,606 inhabitants consisting of 41,911 male residents and 42,258 female residents with a total of 26,664 households. households, as well as the rate of population growth from 2020 until now always increasing.

In addition, in the District of Cilamaya Wetan, there are several PJTKI offices which are one of the goals of the community to look for work abroad. The number of Indonesian Workers per 2022 according to the results of each village there are about 1,187 people working abroad both men and women around the world, but the majority work in the Asian and Arab / Middle Eastern regions.

5. Kependudukan dan Ketenagakerjaan/ *Population and Employment*
 5.1 Kependudukan/ *Population*

Tabel 5.1.1 Luas Wilayah, Jumlah Rumah Tangga, Jumlah Penduduk, dan Tingkat Kepadatan Penduduk menurut Desa di Kecamatan Cilamaya Wetan, 2021

Table 5.1.1 Area, Number of Households, Number of Population, and Population Density by Village in Cilamaya Wetan District, 2021

Desa/ <i>Village</i>		Luas Wilayah (Km2)/ <i>Area</i>	Jumlah Rumah Tangga (KK)/ <i>Number of Households</i>	Jumlah Penduduk/ <i>Total Population</i>	Tingkat Kepadatan Penduduk per Km2/ <i>Population Density</i>
[1]	[2]	[3]	[4]	[5]	
001	Cikarang	3,50	2 693	7 409	2 116
002	Cikalong	4,11	1 494	4 346	1 057
003	Tegalsari	1,98	1 748	4 897	2 473
004	Tegalwaru	4,04	2 427	7 596	1 880
005	Mekarmaya	3,97	2 527	8 417	2 120
006	Cilamaya	3,79	4 065	12 865	3 394
007	Sukatani	7,91	2 998	8 005	1 012
008	Sukakerta	6,36	1 975	6 151	967
009	Rawagempol Kulon	5,64	2 131	6 121	1 085
010	Rawagempol Wetan	4,82	2 151	5 984	1 241
011	Muara Baru	9,43	1 419	3 749	397
012	Muara	14,11	1 680	4 749	335
Cilamaya Wetan		69,66	28 569	79 360	1 139

Sumber/ Source: Disdukcapil Karawang/Population and Civil Registration Agency of Karawang

Tabel 5.1.2 Jumlah Penduduk menurut Desa dan Jenis Kelamin, serta Sex Ratio di Kecamatan Cilamaya Wetan, 2021

Table 5.1.2 Number of Population by Village and Gender, and Sex Ratio in Cilamaya Wetan District, 2021

Desa/ Village		Jenis Kelamin/ Sex		Sex Ratio
		Laki-laki/ Male	Perempuan/ Female	
[1]		[2]	[3]	[4]
001	Cikarang	3 710	3 699	99.70
002	Cikalong	2 171	2 175	100.18
003	Tegalsari	2 442	2 455	100.80
004	Tegalwaru	3 904	3 692	94.56
005	Mekarmaya	3 803	3 685	96.89
006	Cilamaya	6 620	6 245	94.33
007	Sukatani	3 980	4 025	101.13
008	Sukakerta	3 107	3 044	97.97
009	Rawagempol Kulon	3 045	3 076	101.01
010	Rawagempol Wetan	2 969	3 015	101.54
011	Muara Baru	1 910	1 839	96.28
012	Muara	2 484	2 265	91.18
Cilamaya Wetan		40 145	39 215	97.68

Sumber/ Source: Disdukcatpil Karawang/Population and Civil Registration Agency of Karawang

Tabel 5.1.3 Jumlah Penduduk Menurut Kelompok Umur di Kecamatan Cilamaya Wetan, 2021

Table 5.1.3 Number of Populations by Age Group in Cilamaya Wetan District, 2021

Kelompok Umur/ Age Group	Jenis Kelamin/ Sex		Jumlah/ Total
	Laki-laki/ Male	Perempuan/ Female	
[1]			[2]
0 - 4	1 723	1 618	3 341
5 - 9	3 314	3 046	6 360
10 - 14	3 252	3 043	6 295
15 - 19	2 481	2 530	5 011
20 - 24	3 573	3 429	7 002
25 - 29	3 620	3 245	6 865
30 -34	3 117	2 847	5 964
35 - 39	2 953	2 974	5 927
40 - 44	3 159	3 304	6 463
45 - 49	2 811	3 135	5 946
50 - 54	2 835	2 996	5 831
55 - 59	2 179	2 316	4 495
60 - 64	1 901	1 888	3 789
65 - 69	1 390	1 193	2 583
70 - 74	929	805	1 734
75+	908	846	1 754
Cilamaya Wetan	40 145	39 215	79 360

Sumber/Source Disdukcapil Karawang/Population and Civil Registration Agency of Karawang

Tabel 5.1.4 Laju Pertumbuhan Penduduk menurut Desa di Kecamatan Cilamaya Wetan, 2019 - 2021

Table 5.1.4 Population Growth Rate by Village in Cilamaya Wetan District, 2019 - 2021

Kelompok Umur/ Age Group	Jumlah Penduduk/ Total Population			Laju Pertumbuhan penduduk (LPP)/ Population Growth Rate
	2019	2020	2021	
[1]	[2]	[3]	[4]	[5]
0 - 4	7 285	7 231	3 341	0,76
5 - 9	7 159	7 547	6 360	0,82
10 - 14	7 637	7 673	6 295	0,87
15 - 19	6 886	7 121	5 011	0,83
20 - 24	6 042	6 289	7 002	0,72
25 - 29	5 900	6 129	6 865	0,70
30 - 34	6 290	6 440	5 964	0,70
35 - 39	6 300	6 593	5 927	0,78
40 - 44	6 421	6 811	6 463	0,82
45 - 49	5 700	5 867	5 946	0,92
50 - 54	5 177	5 477	5 831	0,94
55 - 59	3 889	4 308	4 495	1,01
60 - 64	3 207	3 486	3 789	1,07
65 - 69	2 118	2 310	2 583	1,10
70 - 74	1 441	1 156	1 734	1,05
75+	1 233	961	1 754	1,23
Cilamaya Wetan	81 994	82 685	79 360	0,84

Sumber/Source: Disdukcatpil Karawang/Population and Civil Registration Agency of Karawang

5.2 Ketenagakerjaan/ *Employment*

Tabel 5.2.1 Keberadaan Kantor PJTKI dan Agen Penyalur Tenaga Kerja menurut Desa di Kecamatan Cilamaya Wetan, 2021

Table 5.2.1 Existence of Indonesian labor service providers Offices and Labor Distribution Agencies by Village in Cilamaya Wetan Subdistrict, 2021

Desa/ Village		Kantor PJTKI/ Indonesian labor service providers Offices	Agen Penyalur TKI ke LN/ Indonesian Manpower Distribution Agency Overseas	Agen Penyalur Tenaga Kerja Lokal/ Local Manpower Distribution Agency
[1]	[2]	[3]	[4]	[4]
001	Cikarang	-	1	-
002	Cikalong	-	1	-
003	Tegalsari	-	-	-
004	Tegalwaru	-	-	-
005	Mekarmaya	-	-	-
006	Cilamaya	-	-	-
007	Sukatani	-	1	-
008	Sukakarta	-	-	-
009	Rawagempol Kulon	-	1	-
010	Rawagempol Wetan	-	1	-
011	Muara Baru	-	-	-
012	Muara	-	-	-
Cilamaya Wetan		0	5	0

Sumber/ Source: Kantor Desa di Kecamatan Cilamaya Wetan/ Village Office in Cilamaya Wetan Subdistrict

Tabel 5.2.2 Jumlah TKI menurut Desa dan Jenis Kelamin di Kecamatan Cilamaya Wetan, 2021
Table 5.2.2 Number of Indonesian Migrant Workers by Village and Sex in Cilamaya Wetan Subdistrict, 2021

	Desa/ Village	Laki-laki/ Male	Perempuan/ Female	Jumlah TKI/ Total
	[1]	[2]	[3]	[4]
001	Cikarang	160	137	297
002	Cikalong	6	20	26
003	Tegalsari	1	7	8
004	Tegalwaru	6	35	41
005	Mekarmaya	1	13	14
006	Cilamaya	10	240	250
007	Sukatani	11	30	41
008	Sukakerta	15	83	98
009	Rawagempol Kulon	30	70	100
010	Rawagempol Wetan	30	120	150
011	Muara Baru	18	53	71
012	Muara	24	67	91
	Cilamaya Wetan	312	875	1187

Sumber/ Source: Kantor Desa di Kecamatan Cilamaya Wetan/ Village Office in Cilamaya Wetan Subdistrict

Tabel 5.2.3 Jumlah TKI menurut Kawasan Negara Tujuan dan Desa di Kecamatan Cilamaya Wetan, 2021

Table 5.2.3 Number of Indonesian Migrant Workers by Region of Destination Country and Village in Cilamaya Wetan Subdistrict, 2021

Desa/ Village		Asia	Afrika/ Africa	Amerika/ America	Europa/ Europe	Timur Tengah/ Middle East	Jumlah TKI/ Total
[1]		[2]	[3]	[4]	[5]	[6]	[7]
001	Cikarang	197	-	-	-	100	297
002	Cikalong	26	-	-	-	-	26
003	Tegalsari	8	-	-	-	-	8
004	Tegalwaru	41	-	-	-	-	41
005	Mekarmaya	14	-	-	-	-	14
006	Cilamaya	210	-	-	-	40	250
007	Sukatani	41	-	-	-	-	41
008	Sukakerta	88	-	-	-	10	98
009	Rawagempol Kulon	80	-	-	-	20	100
010	Rawagempol Wetan	130	-	-	-	20	150
011	Muara Baru	61	-	-	-	10	71
012	Muara	91	-	-	-	-	91
Cilamaya Wetan		987	0	0	0	200	1187

Sumber/ Source: Kantor Desa di Kecamatan Cilamaya Wetan/ Village Office in Cilamaya Wetan Subdistrict

BAB 6

PEMERINTAHAN

Government



ULASAN

Kecamatan Cilamaya Wetan terdiri dari 12 desa yang memiliki dasar hukum pembentukan desa SK Gubernur maupun SK Bupati/Lainnya, sedangkan secara klasifikasi desa merupakan desa swasembada dan merupakan desa tidak tertinggal. Kecamatan Cilamaya Wetan terdiri dari 54 Dusun, 111 RW dan 265 RT dan memiliki status hansip 116 sebagai status inti dan 21 sebagai satgas jadi total sebanyak 137 hansip. Pada tahun 2021 ini seluruh desa di Kecamatan Cilamaya Wetan sudah memiliki Kepala Desa semua.

DESCRIPTION

Cilamaya Wetan Subdistrict consists of 12 villages which have legal basis for the formation of the village of the Governor's Decree and the Bupati / Other SK, while in the classification of villages are self-sufficient villages and villages are not left behind. Cilamaya Wetan Subdistrict consists of 54 Hamlets, 111 RW and 265 RT and has 116 hansip status as core status and 21 as task force so a total of 137 hansip. In 2021 all villages in Cilamaya Wetan Subdistrict already have all the Village Heads.

<https://karawangkab.bps.go.id>

6. Pemerintahan/ Government

Tabel 6.1 Keadaan Desa Berdasarkan Status Hukum di Cilamaya Wetan Cilamaya Wetan, 2021

Table 6.1 Village Conditions Based on Legal Status in Cilamaya Wetan Subdistrict, 2021

		Dasar Hukum/ Legal Basis		
Desa/Village		SK Mendagri/ Decree of the Minister of Home Affairs	SK Gubernur/ Governor's Decree	Lainnya/ Others
	[1]	[2]	[3]	[4]
001	Cikarang	-	-	v
002	Cikalong	-	v	-
003	Tegalsari	-	v	-
004	Tegalwaru	-	v	-
005	Mekarmaya	-	v	-
006	Cilamaya	-	-	v
007	Sukatani	-	v	-
008	Sukakerta	-	v	-
009	Rawagempol Kulon	-	v	-
010	Rawagempol Wetan	-	v	-
011	Muara Baru	-	v	-
012	Muara	-	-	v

Sumber/Source: Kantor Desa di Cilamaya Wetan Cilamaya Wetan/ Village Office in Cilamaya Wetan Subdistrict

Tabel 6.2 Status dan Klasifikasi Desa di Cilamaya Wetan Cilamaya Wetan, 2021
Table 6.2 Village Classification and Status in Cilamaya Wetan Subdistrict, 2021

	Desa/Village	Status		Klasifikasi/ Classification		
		Perkotaan/ Urban	Pedesaan / Rural	Swadaya /Self-help	Swakarya/ Self-developing	Swasembada/ Self-sufficiency
	[1]	[2]	[3]	[4]	[5]	[6]
001	Cikarang	v	-	-	-	v
002	Cikalong	v	-	-	-	v
003	Tegalsari	v	-	-	-	v
004	Tegalwaru	-	v	-	-	v
005	Mekarmaya	v	-	-	-	v
006	Cilamaya	v	-	-	-	v
007	Sukatani	v	-	-	-	v
008	Sukakerta	-	v	-	-	v
009	Rawagempol Kulon	-	v	-	-	v
010	Rawagempol Wetan	v	-	-	-	v
011	Muara Baru	-	v	-	-	v
012	Muara	-	v	-	-	v

Sumber/Source: Kantor Desa di Cilamaya Wetan Cilamaya Wetan/ Village Office in Cilamaya Wetan Subdistrict

Tabel 6.3 Klasifikasi Desa di Cilamaya Wetan Cilamaya Wetan, 2021
Table 6.3 Village Classification in Cilamaya Wetan Subdistrict, 2021

Klasifikasi Desa/ Village Classification			
	Desa/Village	Tertinggal/ Backward Village	Tidak Tertinggal/ Non- Backward Village
	[1]	[2]	[3]
001	Cikarang	-	v
002	Cikalong	-	v
003	Tegalsari	-	v
004	Tegalwaru	-	v
005	Mekarmaya	-	v
006	Cilamaya	-	v
007	Sukatani	-	v
008	Sukakerta	-	v
009	Rawagempol Kulon	-	v
010	Rawagempol Wetan	-	v
011	Muara Baru	-	v
012	Muara	-	v

Sumber/Source: Kantor Desa di Cilamaya Wetan Cilamaya Wetan/Village Office in Cilamaya Wetan Subdistrict

Tabel 6.4 Banyaknya Dusun, Rukun Warga dan Rukun Tetangga menurut Desa di Cilamaya Wetan Cilamaya Wetan, 2021

Table 6.4 Number of hamlets, neighborhood groups and neighborhood units by village in Cilamaya Wetan sub-Subdistrict, 2021

		Banyaknya		
	Desa/Village	Dusun	RW/ Citizens Association	RT/ Neighborhood Association
	[1]	[2]	[3]	[4]
001	Cikarang	5	10	21
002	Cikalong	4	12	24
003	Tegalsari	3	7	14
004	Tegalwaru	5	11	22
005	Mekarmaya	6	12	24
006	Cilamaya	6	12	31
007	Sukatani	5	10	21
008	Sukakerta	4	8	22
009	Rawagempol Kulon	4	8	29
010	Rawagempol Wetan	4	4	24
011	Muara Baru	4	8	15
012	Muara	4	9	18
	Cilamaya Wetan	54	111	265

Sumber/Source: Kantor Desa di Cilamaya Wetan Cilamaya Wetan/ Village Office in Cilamaya Wetan Subdistrict

Tabel 6.5 Jumlah Hansip menurut Status Tugas dan desa di Cilamaya Wetan Cilamaya Wetan, 2021
Table 6.5 Number of Hansip by Task Status and villages in Cilamaya Wetan Subdistrict, 2021

	Desa/Village	Status Tugas Hansip/ civil defense duty status			Jumlah/ Total
		Inti/ Core	Satgas/ Task force	Terdaftar/ Registered	
	[1]	[2]	[3]	[4]	[5]
001	Cikarang	9	1	-	10
002	Cikalong	10	1	-	11
003	Tegalsari	10	1	-	11
004	Tegalwaru	10	1	-	11
005	Mekarmaya	10	1	-	11
006	Cilamaya	9	1	-	10
007	Sukatani	8	1	-	9
008	Sukakerta	10	1	-	11
009	Rawagempol Kulon	8	1	-	9
010	Rawagempol Wetan	9	1	-	10
011	Muara Baru	13	10	-	23
012	Muara	10	1	-	11
	Cilamaya Wetan	116	21	-	137

Sumber/Source: Kantor Desa di Cilamaya Wetan Cilamaya Wetan/ Village Office in Cilamaya Wetan Subdistrict

Tabel 6.6 Jumlah Sarana Keamanan Lingkungan menurut Desa di Cilamaya Wetan Cilamaya Wetan, 2021
Table 6.6 Number of Hansip by Task Status and villages in Cilamaya Wetan Subdistrict, 2021

	Desa/Village	Polsek/ Sectoral Police	Pos Polisi/ Police Station	Pos Kamling
	[1]	[2]	[3]	[4]
001	Cikarang	-	-	4
002	Cikalong	-	-	8
003	Tegalsari	-	-	4
004	Tegalwaru	-	-	2
005	Mekarmaya	1	-	14
006	Cilamaya	-	-	7
007	Sukatani	-	-	4
008	Sukakerta	-	-	8
009	Rawagempol Kulon	-	-	2
010	Rawagempol Wetan	-	-	9
011	Muara Baru	-	-	8
012	Muara	-	-	5
	Cilamaya Wetan	1	-	75

Sumber/Source: Kantor Desa di Cilamaya Wetan Cilamaya Wetan/ Village Office in Cilamaya Wetan Subdistrict

Tabel 6.7 Nama Kepala Desa, Umur, dan Pendidikan Tertinggi yang Ditamatkan menurut Desa di Cilamaya Wetan Cilamaya Wetan, 2021

Table 6.7 Name of Village Head, Age, and Highest Education Completed by Village in Cilamaya Wetan Subdistrict, 2021

	<i>Desa/Village</i>	<i>Nama Kepala Desa/ Name of Head Village</i>	<i>Umur/ Age</i>	<i>Pendidikan/ Educational Attainment</i>
	[1]	[2]	[3]	[4]
001	Cikarang	Mukhlisin	42	SMU
002	Cikalong	H Lili Hermanto	56	D3
003	Tegalsari	Awang Wibisono	51	SMU
004	Tegalwaru	H Nurhasan	47	S1
005	Mekarmaya	H Herman Syuhada	63	SMU
006	Cilamaya	Ali Hamidi SP	47	S1
007	Sukatani	H Masrukhin	54	D3
008	Sukakerta	H Bukhori, SPdi	41	S1
009	Rawagempol Kulon	H Sirad	52	SMU
010	Rawagempol Wetan	H Udin Abdul gani	50	SMU
011	Muara Baru	Ato Sukanto	51	SMU
012	Muara	Iyos Rosita, SPd, Si	34	S1

Sumber/Source: Kantor Desa di Cilamaya Wetan Cilamaya Wetan/ Village Office in Cilamaya Wetan Subdistrict

Tabel 6.8 Keberadaan Lokasi Sarana Perkantoran menurut Desa di Cilamaya Wetan Cilamaya Wetan, 2021

Table 6.8 Existence of Office Facilities Locations by Village in Cilamaya Wetan Subdistrict, 2021

	Desa/Village	Pemkab/ Subistrict governme nt	Cilamaya Wetan/ Dinas OPD/ Instansi	Polri/ Police	TNI/ Army	Lainnya/ Others
	[1]	[2]	[3]	[4]	[5]	[6]
001	Cikarang	-	-	-	-	-
002	Cikalong	-	-	-	-	-
003	Tegalsari	-	-	-	-	-
004	Tegalwaru	-	-	-	-	-
005	Mekarmaya	-	3	1	1	-
006	Cilamaya	-	-	-	-	-
007	Sukatani	-	-	-	-	-
008	Sukakerta	-	-	-	-	-
009	Rawagempol Kulon	-	-	-	-	-
010	Rawagempol Wetan	-	-	-	-	-
011	Muara Baru	-	-	-	-	-
012	Muara	-	-	-	-	-
	Cilamaya Wetan	0	3	1	1	0

Sumber/Source: Kantor Desa di Cilamaya Wetan Cilamaya Wetan/ Village Office in Cilamaya Wetan Subdistrict

BAB 7

KEUANGAN dan KEUANGAN DAERAH

Finance and Regional Finance



ULASAN

DESCRIPTION

Sumber keuangan desa di wilayah Kecamatan Cilamaya Wetan terdiri dari beberapa alokasi anggaran, diantaranya bersumber dari Pendapatan Asli Desa (PAD), Bagi Hasil Pajak, Bagian dari Retribusi, Alokasi dana Desa, Bantuan Keuangan, Hibah, dan Sumbangan Pihak Ketiga.

The village's financial resources in the subdistrict of Cilamaya Wetan consist of several budget allocations, including the source of the Village's Original Income (PAD), Tax Revenue Sharing, Part of Retribution, Village Fund Allocation, Financial Aid, Grants, and Third Party Donations.

<https://karawangkab.bps.go.id>

7. Keuangan dan Keuangan Daerah/ *Finance and Regional Finance*

Tabel 7.1 Rincian Sumber Keuangan Pemerintahan Desa menurut Jenis dan Desa di Kecamatan Cilamaya Wetan, 2020

Table 7.1 Details of Village Government Financial Sources by Type and Village in Cilamaya Wetan Subdistrict, 2020

	<i>Desa/ Village</i>	<i>Dana Desa/ Locally-generated revenue</i>	<i>Bagi Hasil Pajak dan Retribusi/ Tax Revenue Share and Part of retribution</i>	<i>Hasil Swadaya dan Partisipasi Gotong Royong/ Results SelfHelp and Mutual Cooperation</i>	<i>Alokasi Dana Desa (ADD)/ Village Fund Allocation</i>
	[1]	[2]	[3]	[4]	[5]
001	Cikarang	1.153.048.000	290.970.000	26.350.000	632.240.000
002	Cikalong	967.628.000	352.400.000	132.200.000	624.440.000
003	Tegalsari	1.219.547.000	508.640.000	56.000.000	508.640.000
004	Tegalwaru	1.135.680.000	374.430.000	96.900.000	646.270.000
005	Mekarmaya	1.027.117.000	291.870.000	98.000.000	684.440.000
006	Cilamaya	1.391.145.000	337.780.000	39.056.000	710.400.000
007	Sukatani	1.100.402.000	354.700.000	72.491.400	632.240.000
008	Sukakarta	1.175.302.000	284.170.000	211.045.000	584.020.000
009	Rawagempol Kulon	1.134.673.000	305.050.000	221.685.000	626.020.000
010	Rawagempol Wetan	1.125.904.000	356.070.000	208.825.000	616.420.000
011	Muara Baru	2.138.040.000	370.620.000	235.200.000	549.320.000
012	Muara	1.280.670.000	261.670.000	286.300.000	566.840.000
Cilamaya Wetan		-	-	-	-

*Sumber/ Source: Kantor Desa di
Kecamatan Cilamaya Wetan/ Village
Office in Cilamaya Wetan Subdistrict*

Tabel 7.1 Lanjutan
Table 7.1 Continued

	Desa/ Village	Bantuan Keuangan Pemerintah/ Government Financial Assistance	Hibah/ Grant	Sumbang an Pihak Ketiga/ Third Party Donation s	Jumlah/ Total
	[1]	[6]	[7]	[8]	[9]
001	Cikarang	183.200.000	-	-	-
002	Cikalong	120.000.000	-	-	-
003	Tegalsari	140.000.000	-	-	-
004	Tegalwaru	140.000.000	-	-	-
005	Mekarmaya	140.000.000	-	-	-
006	Cilamaya	140.000.000	-	-	-
007	Sukatani	184.600.000	-	-	-
008	Sukakerta	140.000.000	-	-	-
009	Rawagempol Kulon	179.600.000	-	-	-
010	Rawagempol Wetan	140.000.000	-	-	-
011	Muara Baru	140.000.000	-	-	-
012	Muara	140.000.000	-	-	-
	Cilamaya Wetan	-	-	-	-

*Sumber/ Source: Kantor Desa di Kecamatan
Cilamaya Wetan/ Village Office in Cilamaya
Wetan Subdistrict*

Tabel 7.2 Rincian Belanja Pengeluaran Keuangan Pemerintahan Desa menurut Jenis dan Desa di Kecamatan Cilamaya Wetan, 2021

Table 7.2 Details of Village Government Financial Expenditures Spending by Type and Village in Cilamaya Wetan Subdistrict, 2021

	<i>Desa/ Village</i>	<i>Belanja Pegawai/ Employee Expenditure</i>	<i>Belanja Barang/ Jasa/ Shopping for goods / services</i>	<i>Belanja Modal/ Capital Expenditures</i>
	[1]	[2]	[3]	[4]
001	Cikarang
002	Cikalong
003	Tegalsari
004	Tegalwaru
005	Mekarmaya
006	Cilamaya
007	Sukatani
008	Sukakerta
009	Rawagempol Kulon
010	Rawagempol Wetan
011	Muara Baru
012	Muara
	Cilamaya Wetan	-	-	-

Sumber/ Source: Kantor Desa di Kecamatan Cilamaya Wetan/ Village Office in Cilamaya Wetan Subdistrict

Tabel 7.2 Lanjutan
Table 7.2 Continued

	<i>Desa/ Village</i>	<i>Lainnya/ Others</i>	<i>Pembiayaan/ Financing</i>	<i>Jumlah/ Total</i>
	[1]	[5]	[6]	[7]
001	Cikarang
002	Cikalong
003	Tegalsari
004	Tegalwaru
005	Mekarmaya
006	Cilamaya
007	Sukatani
008	Sukakerta
009	Rawagempol Kulon
010	Rawagempol Wetan
011	Muara Baru
012	Muara
	Cilamaya Wetan	-	-	-

Sumber/ Source: Kantor Desa di Kecamatan Cilamaya Wetan/ Village Office in Cilamaya Wetan Subdistrict

Tabel 7.3 Banyaknya Lembaga Keuangan menurut Jenis dan Desa di Kecamatan Cilamaya Wetan, 2021
Table 7.3 Number of Financial Institutions by Type and Village in Cilamaya Wetan Subdistrict, 2021

	Desa/ Village	Kantor Cabang Bank/ Branch Office	KCP Bank/ Sub-Branch Office	Kantor Unit Bank/ Unit Office	Kantor Kas Bank/ Cash Office	BPR/ BPRS/ Rural Bank/ Islamic Rural Bank	Pega - daia n/ Pawnshop	Koperasi / Cooperative	Lembaga Pembiayaan/ Lainnya/ Financial institutions / Others
	[1]	[2]	[3]	[4]	[5]	[6]	[7]	[8]	[9]
001	Cikarang	-	-	-	-	-	-	-	-
002	Cikalong	-	-	-	-	-	-	-	-
003	Tegalsari	-	-	-	-	-	-	-	-
004	Tegalwaru	-	-	1	-	2	-	1	-
005	Mekarmaya	-	-	2	-	1	-	2	-
006	Cilamaya	-	-	2	-	1	1	-	1
007	Sukatani	-	-	-	-	-	-	-	-
008	Sukakerta	-	-	-	-	-	-	-	1
009	Rawagempol Kulon	-	-	-	-	-	-	-	-
010	Rawagempol Wetan	-	-	-	-	-	-	-	-
011	Muara Baru	-	-	-	-	-	-	-	-
012	Muara	-	-	-	-	-	-	-	1
	Cilamaya Wetan	0	0	5	0	4	1	3	3

Sumber/ Source: Kantor Desa di Kecamatan Cilamaya Wetan/ Village Office in Cilamaya Wetan Subdistrict

ST 2023

SENSUS PERTANIAN

BerAKHLAK

Berorientasi Pelayanan Akuntabel Kompeten
Harmonis Loyal Adaptif Kolaboratif

DATA

MENCERDASKAN BANGSA

Enlighten The Nation



**Badan Pusat Statistik
Kabupaten Karawang
BPS-Statistical of Karawang Regency**

Jl. Cakradireja No.36 Karawang 41312, Jawa Barat
Telp: (0267) 402250; Fax: (0267) 8452148
Email: kabkarawang@bps.go.id; pst3215@bps.go.id

ISSN 2828-7371

