

Katalog BPS: 1102001.3604270

KECAMATAN TIRTAYASA DALAM ANGKA

Tirtayasa Subdistrict In Figures

2017



**BADAN PUSAT STATISTIK
KABUPATEN SERANG**
STATISTICS OF SERANG REGENCY

<http://serangkab.bps.go.id>

KECAMATAN TIRTAYASA DALAM ANGKA

Tirtayasa Subdistrict In Figures

2017



Kecamatan Tirtayasa Dalam Angka
Tirtayasa District in Figures
2017

No. Publikasi/Publication Number: 3604270.1731

Katalog/Catalog: 1102001.3604270

Ukuran Buku/Book Size: 14,8 cm x 21 cm

Jumlah Halaman/Number of Pages: xiii + 96 halaman /pages

Naskah/Manuscript:

Badan Pusat Statistik Kabupaten Serang

BPS-Statistics of Serang Regency

Hafidin (KSK Kecamatan Tirtayasa)

Gambar Kover oleh/Cover Designed by:

Badan Pusat Statistik Kabupaten Serang

BPS-Statistics of Serang Regency

Ilustrasi Kover/Cover Illustration:

.../ ...

Diterbitkan oleh/Published by:

© BPS Kabupaten Serang/*BPS-Statistics of Serang Regency*

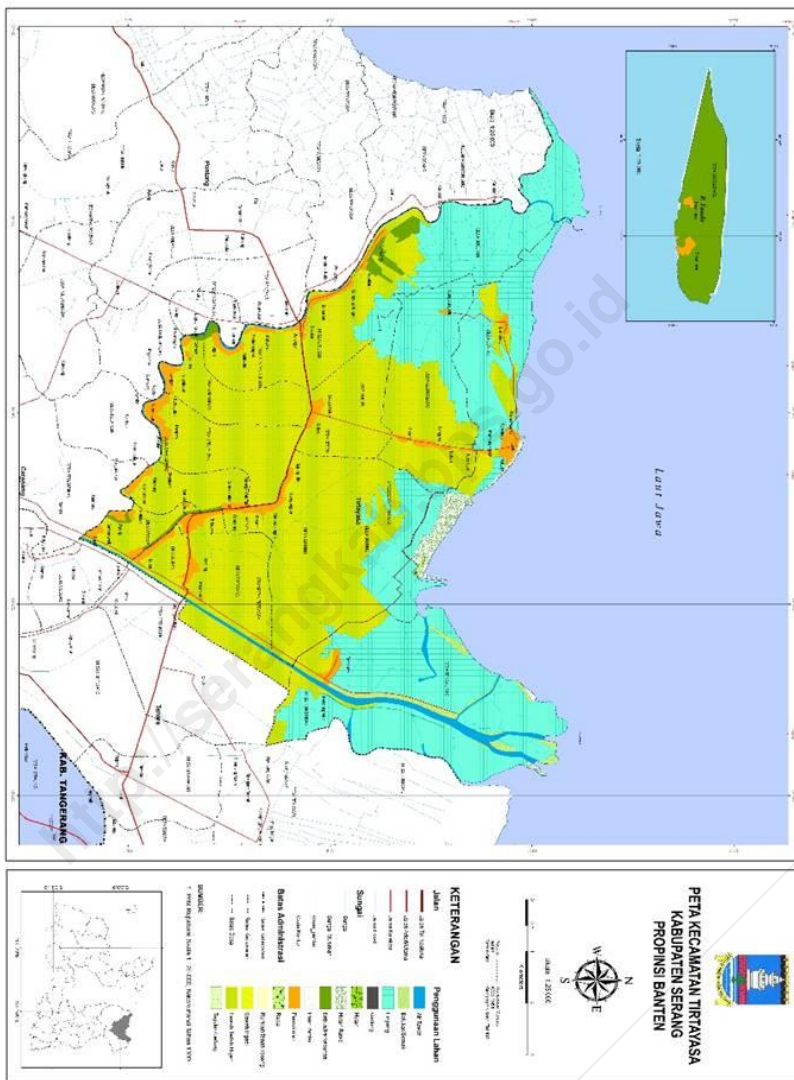
Dicetak oleh/Printed by:

...

**Dilarang mengumumkan, mendistribusikan, mengomunikasikan, dan/atau
menggandakan sebagian atau seluruh isi buku ini untuk tujuan komersial tanpa izin
tertulis dari Badan Pusat Statistik**

*Prohibited to announce, distribute, communicate, and/or copy part or all of this book
for commercial purpose without permission from BPS-Statistics Indonesia*

PETA WILAYAH KECAMATAN TIRTAYASA MAP OF TIRTAYASA DISTRICT



<http://serangkab.bps.go.id>

Kepala BPS Kabupaten Serang
CHIEF STATISTICIAN OF SERANG REGENCY



Ir. Indra Warman

<http://serangkab.bps.go.id>



KATA PENGANTAR

Ketersediaan data yang memadai sampai dengan tingkat wilayah/region yang lebih kecil seperti Kecamatan dan Desa/Kelurahan banyak dibutuhkan oleh pengguna data dalam melihat potensi dan mengevaluasi hasil-hasil pelaksanaan pembangunan ditingkat wilayah tersebut.

Publikasi Kecamatan Tirtayasa Dalam Angka Tahun 2017 adalah salah satu upaya kami untuk menyajikan data sampai tingkat desa. Diharapkan data yang disajikan dapat memenuhi kebutuhan berbagai pihak, sebagai salah satu acuan untuk melihat potensi dan hasil-hasil pembangunan di Kecamatan Tirtayasa

Walaupun publikasi ini telah disiapkan secermat mungkin, namun disadari masih terdapat kekurangan-kekurangan. Untuk itu segala saran sangat diharapkan agar penerbitan publikasi dimasa mendatang dapat lebih baik dan tepat waktu.

Kepada rekan-rekan Dinas/Instansi yang ada di Kecamatan Tirtayasa dan kepada semua pihak yang telah membantu kelancaran dalam penyusunan publikasi ini, kami ucapkan banyak terima kasih.

Serang, 20 September 2017
Kepala Badan Pusat Statistik
Kabupaten Serang

Ir. Indra Warman



PREFACE

The availability of adequate data up to smaller level of area/region such as District and Village/Subdistrict is much needed by data user in order to see the potential and to evaluate the result of the developments in that particular region.

The publication of Tirtayasa District In Figures 2017 is one of our effort to present the data up to village level. We hope the data presented can meet the needs of various parties, as a reference to see the potential and development results in Tirtayasa District.

Although this publication has been prepared as thoroughly as possible, but we realize there are still shortcomings. Therefore we appreciate any suggestion for better future publications.

To our fellow Departments/Institutions in Tirtayasa District and to all of those who have helped the preparation of this publication, we convey our gratitude.

Serang, 20 September 2017

*Chief Statistician of
Serang Regency*

Ir. Indra Warman

DAFTAR ISI/CONTENTS

	halaman page
Peta Wilayah Kecamatan TIRTAYASA	iii
<i>Map Of TIRTAYASA District</i>	iii
<i>Chief Statistician Of Serang Regency</i>	v
Kata Pengantar	vii
<i>Preface</i>	viii
Daftar Isi/ <i>Contents</i>	ix
Daftar Tabel/ <i>List Of Tables</i>	xi
Penjelasan Umum/ <i>Explanatory Notes</i>	xix
1 Geografi	1
Geography	1
2 Pemerintahan	7
Government	7
3 Kependudukan	19
Population	19
4 Pendidikan	27
Education	27
5 Kesehatan dan KB	43
Health and Birth Control	43
6 Sosial Lainnya	63
Other Social Affairs	63
7 Pertanian	75
Agriculture	75
8 Industri dan Penggalan	87
Industry and Excavation	87
9 Perdagangan, Hotel dan Restoran	93
Trade, Hotel and Restaurant	93

<http://serangkab.bps.go.id>

DAFTAR TABEL/LIST OF TABLES

	halaman <i>page</i>
1 GEOGRAFI	1
GEOGRAPHY	1
1.1 Luas Wilayah Desa/Kelurahan di Kecamatan Tirtayasa, 2016	3
Total Area by Village/Subdistrict in Tirtayasa District, 2016	3
1.2 Letak Geografis Desa/Kelurahan di Kecamatan Tirtayasa, 2016	4
Geographical Location of Village/Subdistrict in Tirtayasa District, 2016	4
1.3 Topografi Desa/Kelurahan di Kecamatan Tirtayasa, 2016	5
Topography of Village/Subdistrict in Tirtayasa District, 2016	5
1.4 Jarak Antar Desa/Kelurahan di Kecamatan Tirtayasa, 2016	6
Distances Between Villages/Subdistricts in Tirtayasa District, 2016	6
2 PEMERINTAHAN	7
GOVERNMENT	7
2.1 Status Pemerintahan dan Pembagian Wilayah Administrasi Desa/Kelurahan di Kecamatan Tirtayasa, 2016	9
Governmental Status and Administrative Area Division of Village/Subdistrict in Tirtayasa District, 2016	9
2.2 Status Perdesaan dan Perkotaan Desa/Kelurahan di Kecamatan Tirtayasa, 2016	10
Urban and Rural Status of Village/Subdistrict in Tirtayasa District, 2016	10
2.3 Status Pemerintahan Desa/Kelurahan di Kecamatan Tirtayasa, 2016	11
Governmental Status of Village/Subdistrict in Tirtayasa District, 2016	11
2.4 Kepemilikan Kantor Pemerintahan Desa/Kelurahan dan Badan Perwakilan Desa/Dewan Kelurahan di Kecamatan Tirtayasa , 2016 ..	12
Ownership of Government Office and Council of Village/ Subdistrict in Tirtayasa District, 2016	12
2.5 Kategori Desa/Kelurahan Menurut Tingkat Perkembangan di Kecamatan Tirtayasa , 2016	13

Categories of Village/Subdistrict by Level of Development in Tirtayasa District, 2016	13
2.6 Jumlah Pegawai Kecamatan/Desa/Kelurahan Menurut Status Pegawai di Kecamatan Tirtayasa , 2016	14
Number of Official of District/Village/Subdistrict by Status in Tirtayasa District, 2016	14
2.7 Jumlah Pegawai Kecamatan/Desa/Kelurahan Menurut Pendidikan di Kecamatan Tirtayasa, 2016	15
Number of Official of District/Village/Subdistrict by Level of Education in Tirtayasa District, 2016.....	15
2.8 Jumlah Pegawai Kecamatan/Desa/Kelurahan Menurut Jabatan di Kecamatan Tirtayasa, 2016	16
Number of Official of District/Village/Subdistrict by Position in Tirtayasa District, 2016	16
2.9 Jumlah Pegawai Pemerintah di Lingkungan Kecamatan Menurut Status Pegawai di Kecamatan Tirtayasa , 2016	17
Number of Official in Government Institutions by Status in Tirtayasa District, 2016	17
3 KEPENDUDUKAN	19
POPULATION	19
3.1 Jumlah Penduduk Menurut Jenis Kelamin dan Rasio Jenis Kelamin di Kecamatan Tirtayasa , 2016	21
Population by Sex and Sex Ratio in Tirtayasa District, 2016	21
3.2 Penduduk Menurut Kelompok Umur di Kecamatan Tirtayasa , 2016.....	22
Population by Age Group in Tirtayasa District, 2016.....	22
3.3 Persentase Penduduk Menurut Mata Pencarian di Kecamatan Tirtayasa , 2016	23
Population Percentation by Livelihood in Tirtayasa District, 2016.....	23
3.4 Penduduk Kecamatan Tirtayasa yang Lahir dan Mati Menurut Desa/Kelurahan dan Jenis Kelamin, 2015	25
Mortality and Natality by Village/Subdistrict in Tirtayasa District, 2015.....	25
4 PENDIDIKAN	27
EDUCATION	27

4.1	Jumlah Sekolah, Guru dan Murid PAUD/TQA/TPQ/Play Group di Kecamatan Tirtayasa , 2016.....	29
	Number of School, Teacher and Student of Playgroup in Tirtayasa District, 2016.....	29
4.2	Jumlah Sekolah, Guru dan Murid Raudhatul Athfal di Kecamatan Tirtayasa , 2016.....	30
	Number of Schools, Pupils, and Teachers of Islamic Kindergarten in Tirtayasa District, 2016.....	30
4.3	Jumlah Sekolah, Guru dan Murid Taman Kanak-kanak (TK) di Kecamatan Tirtayasa , 2016.....	31
	Number of Schools, Pupils, and Teachers of Kindergarten in Tirtayasa District, 2016.....	31
4.4	Jumlah Sekolah, Guru dan Murid Madrasah Diniyah di Kecamatan Tirtayasa , 2016.....	32
	Number of Schools, Pupils, and Teachers in Madrasah Diniyah in Tirtayasa District, 2016.....	32
4.5	Jumlah Sekolah, Guru dan Murid Sekolah Dasar (SD) di Kecamatan Tirtayasa , 2016.....	33
	Number of Schools, Pupils, and Teachers of Elementary School in Tirtayasa District, 2016.....	33
4.6	Jumlah Sekolah, Guru dan Murid Madrasah Ibtidaiyah (MI) di Kecamatan Tirtayasa , 2016.....	34
	Number of Schools, Pupils, and Teachers of Islamic Elementary School in Tirtayasa District, 2016.....	34
4.7	Jumlah Sekolah, Murid, dan Guru Sekolah Menengah Pertama (SMP) di Kecamatan Tirtayasa , 2016	35
	Number of Schools, Pupils, and Teachers of Junior High School in Tirtayasa District, 2016.....	35
4.8	Jumlah Sekolah, Guru dan Murid Madrasah Tsanawiyah (MTs) di Kecamatan Tirtayasa , 2016.....	36
	Number of Schools, Pupils, and Teachers of Islamic Junior High School in Tirtayasa District, 2016	36
4.9	Jumlah Sekolah, Guru dan Murid Sekolah Menengah Umum (SMU) di Kecamatan Tirtayasa , 2016.....	37

Number of Schools, Pupils, and Teachers of High School in Tirtayasa District, 2016	37
4.10 Jumlah Sekolah, Guru dan Murid Madrasah Aliyah (MA) di Kecamatan Tirtayasa , 2016	38
Number of Schools, Pupils, and Teachers of Islamic High School in Tirtayasa District, 2016	38
4.11 Jumlah Sekolah, Guru dan Murid Sekolah Menengah Kejuruan (SMK) di Kecamatan Tirtayasa , 2016	39
Number of Schools, Pupils, and Teachers of Vocational High School in Tirtayasa District, 2016.....	39
4.12 Jumlah Fakultas, Jurusan, Pengajar/Dosen dan Mahasiswa Pada Akademi/Perguruan Tinggi di Kecamatan Tirtayasa , 2016.....	40
Number of Faculties, Majors, Lecturers and Students of Academy/University in Tirtayasa District, 2016	40
4.13 Jumlah Lembaga Kursus, Pengajar dan Siswa di Kecamatan Tirtayasa , 2016	41
Number of Course Institutions, Instructures and Students in Tirtayasa District, 2016	41
4.14 Jumlah Pasantren, Kyai dan Santri di Kecamatan Tirtayasa , 2016	42
Number of Islamic Boarding Schools, Clerics and Students in Tirtayasa District, 2016	42
5 KESEHATAN DAN KB	43
HEALTH AND BIRTH CONTROL	43
5.1 Jumlah Sarana Kesehatan di Kecamatan Tirtayasa , 2016	45
Number of Health Facilities in Tirtayasa District, 2016.....	45
5.2 Jumlah Tenaga Kesehatan di Kecamatan Tirtayasa , 2016	48
Number of Health Worker in Tirtayasa District, 2016	48
5.3 Jumlah Pasien Menurut Jenis Penyakit di Puskesmas Kecamatan Tirtayasa , 2016	49
Number of Patients by Type of Disease in Public Health Center of Tirtayasa District, 2016	49
5.4 Target dan Realisasi Imunisasi di Kecamatan Tirtayasa , 2016	51
Targets and Realization of Vaccination in Tirtayasa District, 2016	51
5.5 Jumlah Penerima Jamkesmas di Kecamatan Tirtayasa , 2015.....	54

Number of Recipients of Jamkesmas in Tirtayasa District, 2015	54
5.6 Jumlah Kelahiran, Bayi Berat Lahir Rendah dan Balita/Anak Gizi Buruk di Kecamatan Tirtayasa , 2016	55
Number of Births, Low Birthweight Infants and Malnourished Child/Toddler in Tirtayasa District, 2016	55
5.7 Cakupan Kunjungan Ibu Hamil, K1 dan K2 di Kecamatan Tirtayasa , 2016	56
Antenatal Care in Tirtayasa District, 2016	56
5.8 Jumlah Persalinan yang Ditolong Tenaga Kesehatan di Kecamatan Tirtayasa , 2016.....	57
Number of Births Assisted by Health Workers in Tirtayasa District, 2016	57
5.9 Jumlah Sarana Pelayanan KB di Kecamatan Tirtayasa , 2016	58
Number of Birth Control Facilities in Tirtayasa District, 2016	58
5.10 Jumlah Pasangan Usia Subur (PUS) di Kecamatan Tirtayasa , 2016 ...	59
Number of Couples of Reproductive Age in Tirtayasa District, 2016	59
5.11 Jumlah Peserta KB Lestari Menurut Kelompok Umur di Kecamatan Tirtayasa , 2016.....	60
Number of Participants of KB Lestari by Age Group in Tirtayasa District, 2016	60
5.12 Jumlah Akseptor KB Menurut Alat/Cara Kontrasepsi di Kecamatan Tirtayasa , 2016.....	61
Number of Family Planning (KB) Acceptor by Birth Control Methods in Tirtayasa District, 2016	61
6 SOSIAL LAINNYA	63
OTHER SOCIAL AFFAIRS	63
6.1 Jumlah Keluarga Menurut Tahapan Keluarga Sejahtera di Kecamatan Tirtayasa , 2016.....	65
Number of Families by Prosperity Level in Tirtayasa District, 2016	65
6.2 Jumlah dan Persentase Keluarga Penerima Bantuan Program Keluarga Harapan (PKH) di Kecamatan Tirtayasa , 2016	66
Number and Percentage of Recipient of Program Keluarga Harapan (PKH) in Tirtayasa District, 2016	66
6.3 Kondisi Bangunan Tempat Tinggal di Kecamatan Tirtayasa , 2016.....	67
The Condition of Residential Buildings in Tirtayasa District, 2016.....	67

6.4	Persentase Jumlah Pemeluk Agama di Kecamatan Tirtayasa , 2016..	68
	Percentage of Believer in Tirtayasa District, 2016	68
6.5	Jumlah Tempat Peribadatan di Kecamatan Tirtayasa , 2016	69
	Number of Worship Facilities in Tirtayasa District, 2016.....	69
6.6	Jumlah Tempat Peribadatan di Kecamatan Tirtayasa , 2016	70
	Number of Worship Facilities in Tirtayasa District, 2016.....	70
6.7	Jumlah Pernikahan, Talak/Cerai dan Rujuk Menurut Desa/Kelurahan di Kecamatan Tirtayasa , 2016.....	71
	Number of Marriages, Separations/Divorces and Reconciliations by Village/Subdistrict in Tirtayasa District, 2016	71
6.8	Gangguan Keamanan dan Ketertiban Masyarakat (KAMTIBMAS) di Kecamatan Tirtayasa , 2016	72
	Disturbance of Peace and Public Order in Society in Tirtayasa District, 2015..	72
6.9	Jumlah Permasalahan Sosial Menurut Jenis di Kecamatan Tirtayasa , 2016	73
	Number of Social Problems in Tirtayasa District, 2016.....	73
6.10	Banyaknya Fasilitas Olahraga Menurut Desa/Kelurahan di Kecamatan Tirtayasa , 2016	74
	Number of Sport Facilities in Tirtayasa District, 2016.....	74
7	PERTANIAN	75
	AGRICULTURE	75
7.1	Luas Lahan Sawah dan Pertanian Bukan Sawah di Kecamatan Tirtayasa , 2016	77
	Area of Wetland and Dryland Field in Tirtayasa District, 2016.....	77
7.2	Luas Panen dan Produksi Tanaman Padi dan Palawija di Kecamatan Tirtayasa , 2016	78
	Harvested Area and Production of Rice and Coarse Grains, Pulses, Roots and Tuber (CGPRT) Crops in Tirtayasa District, 2016	78
7.3	Luas Tanam dan Produksi Sayuran di Kecamatan Tirtayasa , 2016.....	79
	Planted Area and Production of Vegetables in Tirtayasa District, 2016	79
7.4	Luas Tanam dan Produksi Buah-buahan di Kecamatan Tirtayasa , 2016.....	80
	Planted Area and Production of Fruits in Tirtayasa District, 2016	80

7.5	Luas Panen dan Produksi Tanaman Obat-obatan di Kecamatan Tirtayasa, 2016	81
	Harvested Area and Production of Medicinal Plants in Tirtayasa District, 2016	81
7.6	Luas Area dan Produksi Perkebunan Rakyat di Kecamatan Tirtayasa, 2016	82
	Planted Area and Production of Smallholder Plantation in Tirtayasa District, 2016.....	82
7.7	Populasi Ternak dan Unggas di Kecamatan Tirtayasa, 2016.....	83
	Population of Livestock and Poultry in Tirtayasa District, 2016	83
7.8	Jumlah Kelompok Tani di Kecamatan Tirtayasa, 2016.....	84
	Number of Farmers Group in Tirtayasa District, 2016	84
7.9	Kelompok Tani dan Anggota di Kecamatan Tirtayasa, 2016.....	85
	Farmers Group and Its Members in Tirtayasa District, 2016.....	85
8	INDUSTRI DAN PENGGALIAN	87
	INDUSTRY AND EXCAVATION	87
8.1	Jumlah Perusahaan dan Tenaga Kerja Industri Kecil dan Rumah Tangga di Kecamatan Tirtayasa , 2016	89
	Number of Small/Household Manufacturing Establishment and Employees in Tirtayasa District, 2016	89
8.2	Jumlah Perusahaan dan Tenaga Kerja Industri Kecil dan Rumah Tangga Menurut Jenis Industri di Kecamatan Tirtayasa , 2016.....	90
	Number of Small/Household Manufacturing Establishment and Employees by Kind of Manufacturing in Tirtayasa District, 2016	90
8.3	Jumlah Perusahaan dan Tenaga Kerja Industri Menengah dan Besar Menurut Jenis Industri di Kecamatan Tirtayasa , 2016.....	91
	Number of Medium/Large Manufacturing Establishment and Employees by Kind of Manufacturing in Tirtayasa District, 2016	91
8.4	Jumlah Lokasi Usaha Penggalian, Perusahaan dan Tenaga Kerja di Kecamatan Tirtayasa , 2016.....	92
	Number of Excavation Locations, Companies and Employees in Tirtayasa District, 2016.....	92
9	PERDAGANGAN, HOTEL DAN RESTORAN	93
	TRADE, HOTEL AND RESTAURANT	93

9.1	Jumlah Restoran dan Toko Kelontong di Kecamatan Tirtayasa , 2016.....	95
	Number of Restaurants and Stores in Tirtayasa D istrict, 2016.....	95
9.2	Jumlah Penginapan dan Hotel di Kecamatan Tirtayasa, 2016.....	96
	Number of Accommodations and Hotels in Tirtayasa District, 2016.....	96

<http://serangkab.bps.go.id>

PENJELASAN UMUM/*EXPLANATORY NOTES*

Tanda-tanda, satuan-satuan, dan lain-lainnya yang digunakan dalam publikasi ini adalah sebagai berikut:

Symbols, measurement units, and acronyms which are used in this publication, are as follows:

1. TANDA-TANDA/*SYMBOLS*

Data tidak tersedia/ <i>Data not available</i>	:	...
Tidak ada atau nol / <i>Null or zero</i>	:	—
Data dapat diabaikan/ <i>Data negligible</i>	:	0
Tanda decimal/ <i>Decimal point</i>	:	,
Data tidak dapat ditampilkan/ <i>Not applicable</i>	:	NA
Angka perkiraan/ <i>Estimated figures</i>	:	e
Angka sementara/ <i>Preliminary figures</i>	:	x
Angka sangat sementara/ <i>Very preliminary figures</i>	:	xx
Angka diperbaiki/ <i>Revised figures</i>	:	r

2. SATUAN/*UNITS*

barel/ <i>barrel</i>	:	158,99 liter/ <i>litres</i> = 1/6,2898 m ³
hektar (ha)/ <i>hectare (ha)</i>	:	10 000 m ²
kilometer (km)/ <i>kilometres (km)</i>	:	1 000 meter/ <i>meters</i> (m)
knot/ <i>knot</i>	:	1,8523 km/jam (km/hour)
kuintal/ <i>quintal</i>	:	100 kg
KWh	:	1 000 Watt <i>hour</i>
MWh	:	1 000 KWh
liter (untuk beras)/ <i>litre (for rice)</i>	:	0,80 kg
ons/ <i>ounce</i>	:	28,31 gram/ <i>grams</i>
ton	:	1 000 kg

Satuan lain: buah, dus, butir, helai/lembar, kaleng, batang, pulsa, ton kilometer (ton-km), jam, menit, persen (%).

Other units: unit, pack, pieces, sheet, tin, pulse, ton-kilometres(ton-km), hour, minute, percent (%).

Perbedaan angka di belakang koma disebabkan oleh pembulatan angka.

The difference in decimal numbers is caused by rounding.

<http://serangkab.bps.go.id>

1

GEOGRAFI GEOGRAPHY

<http://serangkab.bps.go.id>

Tabel 1.1 Luas Wilayah Desa/Kelurahan di Kecamatan Tirtayasa, 2016
Table Total Area by Village/Subdistrict in Tirtayasa District, 2016

Desa/Kelurahan Village/Subdistrict	Luas Wilayah (Km ²) Total Area (Km ²)	Persentase Percentage
(1)	(2)	(3)
1. Tengkurak	4,15	7,80
2. Tirtayasa	2,30	4,32
3. Laban	2,31	4,34
4. Puser	1,55	2,91
5. Samparwadi	2,21	4,15
6. Sujung	9,45	17,77
7. Kebon	2,45	4,61
8. Kebuyutan	2,18	4,10
9. Kemanisan	1,80	3,38
10. Pontang Legon	3,22	6,05
11. Susukan	9,10	17,11
12. Alang-alang	4,65	8,74
13. Lontar	5,45	10,25
14. Wargasara	2,37	4,46
Jumlah/ Total	53,19	100,00

Sumber/ Source: Peraturan Daerah Kab. Serang No. 16 Tahun 2001 tentang Pembentukan Kecamatan dan kelurahan / Regional Regulation of Serang Regency No. 16, 2001 on The Formation of District and Subdistrict

Tabel 1.2 Letak Geografis Desa/Kelurahan di Kecamatan Tirtayasa, 2016
Table Geographical Location of Village/Subdistrict in Tirtayasa District, 2016

Desa/Kelurahan Village/Subdistrict	Pantai Coastal	Bukan Pantai Non-Coastal		
		Lembah Valley	Kawasan Lereng Hillside	Dataran Plain Area
(1)	(2)	(3)	(4)	(5)
1. Tengkurak	√	-	-	-
2. Tirtayasa	-	-	-	√
3. Laban	-	-	-	√
4. Puser	-	-	-	√
5. Samparwadi	-	-	-	√
6. Sujung	-	-	-	√
7. Kebon	-	-	-	√
8. Kebuyutan	-	-	-	√
9. Kemanisan	-	-	-	√
10. Pontang Legon	-	-	-	√
11. Susukan	-	-	-	√
12. Alang-alang	√	-	-	-
13. Lontar	√	-	-	-
14. Wargasara	√	-	-	-

Sumber/ Source: Kantor Desa Se Kecamatan Tirtayasa /Village Offices in Tirtayasa District

Tabel 1.3 Topografi Desa/Kelurahan di Kecamatan Tirtayasa, 2016
Table Topography of Village/Subdistrict in Tirtayasa District, 2016

Desa/Kelurahan Village/Subdistrict	Ketinggian dari Permukaan Laut (m) Altitude (m)	Kemiringan Lahan Slope		
		Landai Low ($< 15^\circ$)	Sedang Medium ($15^\circ-25^\circ$)	Curam High ($>25^\circ$)
(1)	(2)	(3)	(4)	(5)
1. Tengkurak	2	✓	-	-
2. Tirtayasa	2	✓	-	-
3. Laban	2	✓	-	-
4. Puser	2	✓	-	-
5. Samparwadi	2	✓	-	-
6. Sujung	1	✓	-	-
7. Kebon	1	✓	-	-
8. Kebuyutan	2	✓	-	-
9. Kemanisan	2	✓	-	-
10. Pontang Legon	3	✓	-	-
11. Susukan	4	✓	-	-
12. Alang-alang	1	✓	-	-
13. Lontar	1	✓	-	-
14. Wargasara	1	✓	-	-

Sumber/ Source: Kantor Desa Se Kecamatan Tirtayasa /Village Offices in Tirtayasa District

Tabel 1.4 Jarak Antar Desa/Kelurahan di Kecamatan Tirtayasa, 2016
Table Distances Between Villages/Subdistricts in Tirtayasa District, 2016

Desa/ Kelurahan	Tengkurak	Tirtayasa	Laban	Puser	Samparwadi	Sujung	Kebon	Kebuyutan	Kemanisan	Pontang Legon	Susukan	Alang-alang	Lontar	Wargasara
(1)	(2)	(3)	(4)	(5)	(6)	(7)	(8)	(9)	(10)	(11)	(12)	(13)	(14)	(15)
Tengkurak	-	6	9	10	10	8	10	12	12	13	13	13	14	30
Tirtayasa	6	-	4	5	4	2	4	6	6	8	7	7	8	32
Laban	9	4	-	3	3	5	7	5	7	9	8	8	9	38
Puser	10	5	3	-	8	9	11	6	8	10	9	9	10	40
Samparwadi	10	4	3	8	-	6	8	3	5	7	6	6	9	39
Sujung	8	2	5	9	6	-	2	8	6	8	7	7	8	38
Kebon	10	4	7	11	8	2	-	8	6	8	6	2	4	36
Kebuyutan	12	6	5	6	3	8	8	-	5	1	2	11	12	28
Kemanisan	12	6	7	8	5	6	6	5	-	4	9	9	10	26
PontanLegon	13	8	9	10	7	8	8	1	4	-	3	6	7	24
Susukan	13	7	8	9	6	7	3	2	9	3	-	5	6	17
Alang-alang	13	7	8	9	8	7	3	11	9	6	5	-	1	17
Lontar	14	8	9	10	9	8	4	12	10	7	6	1	-	16
Wargasara	30	32	38	40	39	38	36	28	26	24	17	17	16	-

Sumber/ Source: Kantor Desa Se Kecamatan Tirtayasa /Village Offices in Tirtayasa District

2

**PEMERINTAHAN
GOVERNMENT**

<http://serangkab.bps.go.id>

Tabel 2.1 Status Pemerintahan dan Pembagian Wilayah Administrasi Desa/Kelurahan di Kecamatan Tirtayasa, 2016
Governmental Status and Administrative Area Division of Village/Subdistrict in Tirtayasa District, 2016

Desa/Kelurahan <i>Village/Subdistrict</i>	Status Pemerintahan <i>Governmental Status</i>	Dusun <i>Sub-village</i>	RW	RT
(1)	(2)	(3)	(4)	(5)
1. Tengkurak	Desa	-	3	9
2. Tirtayasa	Kota	-	3	7
3. Laban	Desa	-	3	10
4. Puser	Desa	-	3	8
5. Samparwadi	Desa	-	3	10
6. Sujung	Desa	-	3	10
7. Kebon	Desa	-	2	6
8. Kebuyutan	Desa	-	3	7
9. Kemanisan	Desa	-	3	8
10. Pontang Legon	Desa	-	2	8
11. Susukan	Desa	-	4	12
12. Alang-alang	Desa	-	3	10
13. Lontar	Desa	-	5	22
14. Wargasara	Desa	-	2	6
Jumlah	14	-	42	133

Sumber/ Source: Kantor Desa Se Kecamatan Tirtayasa/Village Offices in Tirtayasa District

Tabel 2.2 Status Perdesaan dan Perkotaan Desa/Kelurahan di Kecamatan Tirtayasa, 2016
Table *Urban and Rural Status of Village/Subdistrict in Tirtayasa District, 2016*

Desa/Kelurahan <i>Village/Subdistrict</i>	Perkotaan <i>Urban</i>	Perdesaan <i>Rural</i>
(1)	(2)	(3)
1. Tengkurak	-	√
2. Tirtayasa	√	-
3. Laban	√	-
4. Puser	-	√
5. Samparwadi	-	√
6. Sujung	-	-
7. Kebon	-	√
8. Kebuyutan	-	√
9. Kemanisan	√	-
10. Pontang Legon	-	√
11. Susukan	-	-
12. Alang-alang	-	√
13. Lontar	-	√
14. Wargasara	-	√

Sumber/ Source: Kantor Kecamatan Tirtayasa / Office of Tirtayasa District

Tabel 2.3 Status Pemerintahan Desa/Kelurahan di Kecamatan Tirtayasa, 2016
Table *Governmental Status of Village/Subdistrict in Tirtayasa District, 2016*

Desa/Kelurahan <i>Village/District</i>	Status Pemerintahan <i>Governmental Status</i>	Ibu Kota <i>Capital</i>
(1)	(2)	(3)
1. Tengkurak	Desa	TENKURAK
2. Tirtayasa	Kota	TIRTAYASA
3. Laban	Desa	LABAN
4. Puser	Desa	BOJONG
5. Samparwadi	Desa	TEGAL SARI
6. Sujung	Desa	SUJUNG
7. Kebon	Desa	SIDAYU
8. Kebuyutan	Desa	KEMANISAN
9. Kemanisan	Desa	CIWULUNG
10. Pontang Legon	Desa	PONTANG LEGON
11. Susukan	Desa	SAMPANG
12. Alang-alang	Desa	LANGGEN
13. Lontar	Desa	LONTAR
14. Wargasara	Desa	PULO TUNDA

Sumber/ Source: Kantor Desa Se Kecamatan Tirtayasa /Village Offices in Tirtayasa District

Tabel 2.4 **Kepemilikan Kantor Pemerintahan Desa/Kelurahan dan Badan Perwakilan Desa/Dewan Kelurahan di Kecamatan Tirtayasa , 2016**
Ownership of Government Office and Council of Village/ Subdistrict in Tirtayasa District, 2016

Desa/Kelurahan <i>Village/Subdistrict</i>	Kantor Desa/Kelurahan <i>Village/Subdistrict Office</i>	Balai Desa <i>Village Meeting Hall</i>	BPD/DK <i>Village/Subdistrict Council</i>
(1)	(2)	(3)	(4)
1. Tengkurak	✓	✓	-
2. Tirtayasa	✓	✓	✓
3. Laban	✓	✓	✓
4. Puser	✓	✓	-
5. Samparwadi	✓	✓	-
6. Sujung	✓	✓	✓
7. Kebon	✓	✓	✓
8. Kebuyutan	✓	✓	-
9. Kemanisan	✓	✓	-
10. Pontang Legon	✓	✓	-
11. Susukan	✓	✓	✓
12. Alang-alang	✓	✓	✓
13. Lontar	✓	✓	-
14. Wargasara	✓	✓	-

Sumber/ Source: Kantor Desa Se Kecamatan Tirtayasa /*Village Offices in Tirtayasa District*

Tabel 2.5 Kategori Desa/Kelurahan Menurut Tingkat Perkembangan di Kecamatan Tirtayasa , 2016
Table Categories of Village/Subdistrict by Level of Development in Tirtayasa District, 2016

Desa/Kelurahan Village/Subdistrict	Swadaya	Swakarsa	Swasembada
(1)	(2)	(3)	(4)
1. Tengkurak	-	√	-
2. Tirtayasa	-	-	√
3. Laban	-	√	-
4. Puser	-	√	-
5. Samparwadi	-	√	-
6. Sujung	-	-	√
7. Kebon	-	√	-
8. Kebuyutan	-	√	-
9. Kemanisan	-	√	-
10. Pontang Legon	-	√	-
11. Susukan	-	-	√
12. Alang-alang	-	√	-
13. Lontar	-	√	-
14. Wargasara	-	√	-

Sumber/ Source: Kantor Kecamatan Tirtayasa / Office of Tirtayasa District

Tabel 2.6 Jumlah Pegawai Kecamatan/Desa/Kelurahan Menurut Status Pegawai di Kecamatan Tirtayasa , 2016
Number of Official of District/Village/Subdistrict by Status in Tirtayasa District, 2016

Kecamatan/Desa/Kelurahan District/Village/Subdistrict	PNS Civil Servant		Tenaga Honoror Temporary Employee		Tenaga Kerja Sukarela (TKS) Volunteer	
	L/M	P/ F	L/M	P/ F	L/M	P/ F
(1)	(2)	(3)	(4)	(5)	(6)	(7)
1. Tengkurak	1	-	7	-	-	-
2. Tirtayasa	-	-	8	-	-	-
3. Laban	1	-	7	-	-	-
4. Puser	1	-	7	-	-	-
5. Samparwadi	1	-	7	-	-	-
6. Sujung	1	-	7	-	-	-
7. Kebon	1	-	7	-	-	-
8. Kebuyutan	1	-	7	-	-	-
9. Kemanisan	-	1	7	-	-	-
10. Pontang Legon	1	-	7	-	-	-
11. Susukan	1	-	7	-	-	-
12. Alang-alang	1	-	7	-	-	-
13. Lontar	1	-	7	-	-	-
14. Wargasara	1	-	7	-	-	-
Jumlah	12	1	99	-	-	-

Sumber/ Source: Kantor Kecamatan Tirtayasa / Office of Tirtayasa District

Tabel 2.7 Jumlah Pegawai Kecamatan/Desa/Kelurahan Menurut Pendidikan di Kecamatan Tirtayasa, 2016
Table *Number of Official of District/Village/Subdistrict by Level of Education in Tirtayasa District, 2016*

Kecamatan/Desa/Kelurahan District/Village/Subdistrict	SLTP Junior High School		SLTA High School		Akademi/PT Academy/University	
	L/M	P/ F	L/M	P/ F	L/M	P/ F
	(1)	(2)	(3)	(4)	(5)	(6)
1. Tengkurak	-	-	8	-	-	-
2. Tirtayasa	-	-	5	-	3	-
3. Laban	-	-	9	-	-	-
4. Puser	-	-	8	-	1	-
5. Samparwadi	-	-	8	-	1	-
6. Sujung	-	-	5	-	3	-
7. Kebon	-	-	8	-	1	-
8. Kebuyutan	-	-	9	-	-	-
9. Kemanisan	-	-	8	-	-	1
10. Pontang Legon	-	-	8	-	1	-
11. Susukan	-	-	7	-	2	-
12. Alang-alang	-	-	9	-	-	-
13. Lontar	-	-	8	-	1	-
14. Wargasara	-	-	9	-	-	-
Jumlah/Total	-	-	109	-	13	1

Sumber/ Source: Kantor Desa dan Kecamatan Tirtayasa / Village Offices and Office of Tirtayasa District

Tabel 2.8 Jumlah Pegawai Kecamatan/Desa/Kelurahan Menurut Jabatan di Kecamatan Tirtayasa, 2016
Table Number of Official of District/Village/Subdistrict by Position in Tirtayasa District, 2016

Kecamatan/Desa/Kelurahan District/Village/Subdistrict	Camat/Kepala Desa Chief of District/Village		Sekcam/Sekdes Secretary of District/Village		Kasi Section Chief		Staf Staffs	
	L/M	P/ F	L/M	P/ F	L/M	P/ F	L/M	P/ F
(1)	(2)	(3)	(4)	(5)	(6)	(7)	(8)	(9)
1. Tengkurak	1	-	1	--	3	-	4	-
2. Tirtayasa	1	-	1	-	3	-	4	-
3. Laban	1	-	1	-	3	-	4	-
4. Puser	1	-	1	-	3	-	4	-
5. Samparwadi	1	-	1	-	3	-	4	-
6. Sujung	1	-	1	-	3	-	4	-
7. Kebon	1	-	1	-	3	-	4	-
8. Kebuyutan	1	-	1	-	3	-	4	-
9. Kemanisan	1	-	-	1	3	-	4	-
10. Pontang Legon	1	-	1	-	3	-	4	-
11. Susukan	1	-	1	-	3	-	4	-
12. Alang-alang	1	-	1	-	3	-	4	-
13. Lontar	1	-	1	-	3	-	4	-
14. Wargasara	1	-	1	-	3	-	4	-
Jumlah	14	-	13		42	-	48	-

Sumber/ Source: Kantor Desa dan Kecamatan Tirtayasa / Village Offices and Office of Tirtayasa District

Tabel 2.9 Jumlah Pegawai Pemerintah di Lingkungan Kecamatan Menurut Status Pegawai di Kecamatan Tirtayasa , 2016
Table Number of Official in Government Institutions by Status in Tirtayasa District, 2016

UPTD/Lembaga Institution	PNS Civil Servant		Tenaga Honoror Temporary Employee		Tenaga Kerja Sukarela (TKS) Volunteer	
	L/M	P/ F	L/M	P/ F	L/M	P/ F
(1)	(2)	(3)	(4)	(5)	(6)	(7)
UPTD Pendidikan Education Unit
UPTD Pertanian Agriculture Unit	2	-	4	2	1	-
Puskesmas Public Health Center
Kantor Urusan Agama Office of Religious Affairs	2	-	5	-	-	-
UPTD KB Birth Control Unit	2	-	-	-	-	-
UPTD Pekerja Umum Public Works Unit	-	-	-	-	-	-
Polsek Police	25	-	-	-	1	-
Koramil District Military Command	11	-	1	-	-	-
UPTD PDAM Local Water Company	-	-	-	-	-	-
UPK PNPM National Community Empowerment Unit	-	-	5	1	-	-

Sumber/ Source: Kantor Desa dan Kecamatan Tirtayasa / Village Offices and Office of Tirtayasa District

3

KEPENDUDUKAN
POPULATION

<http://serangkab.bps.go.id>

Tabel 3.1 Jumlah Penduduk Menurut Jenis Kelamin dan Rasio Jenis Kelamin di Kecamatan Tirtayasa , 2016
Table Population by Sex and Sex Ratio in Tirtayasa District, 2016

Desa/Kelurahan Village/Subdistrict	Laki-laki Male	Perempuan Female	Jumlah Total	Rasio Jenis Kelamin Sex ratio
(1)	(2)	(3)	(4)	(5)
1. Tengkurak	978	972	1,950	100,62
2. Tirtayasa	1,221	1,212	2,433	100,74
3. Laban	827	822	1,649	100,61
4. Puser	919	913	1,832	100,66
5. Samparwadi	920	914	1,834	100,66
6. Sujung	1,548	1,537	3,085	100,72
7. Kebon	900	894	1,794	100,67
8. Kebuyutan	753	749	1,502	100,53
9. Kemanisan	885	879	1,764	100,68
10. Pontang Legon	920	915	1,835	100,55
11. Susukan	1,411	1,402	2,813	100,64
12. Alang-alang	919	913	1,832	100,66
13. Lontar	1,948	1,934	3,882	100,72
14. Wargasara	376	372	748	100,08
Jumlah/ Total	14,525	14,428	28,953	100,67

Sumber/ Source : BPS Kabupaten Serang/ BPS – Statistics of Serang Regency

POPULATION

Tabel 3.2 Penduduk Menurut Kelompok Umur di Kecamatan Tirtayasa , 2016
Table Population by Age Group in Tirtayasa District, 2016

Kelompok Umur (Tahun) <i>Age Group (Year)</i>	Laki-laki <i>Male</i>	Perempuan <i>Female</i>	Jumlah <i>Total</i>
(1)	(2)	(3)	(4)
0 – 4	1391	1267	2.658
5 – 9	1452	1429	2.911
10 – 14	1504	1410	2.914
15 – 19	1520	1319	2.839
20 – 24	1393	1406	2.799
25 – 29	1236	1218	2.454
30 – 34	1120	1117	2.237
35 – 39	1005	922	1.927
40 – 44	834	879	1.713
45 – 49	759	815	1.574
50 – 54	692	707	1.399
55 – 59	512	572	1.084
60 – 64	430	526	956
65 – 69	333	388	721
70 – 74	131	198	329
75+	119	150	269
Jumlah/ Total	14.525	14.428	28.953

Sumber/ Source: BPS Kabupaten Serang/ BPS – Statistics of Serang Regency

Tabel 3.3 **Persentase Penduduk Menurut Mata Pencarian di Kecamatan Tirtayasa , 2016**
Table **Population Percentation by Livelihood in Tirtayasa District, 2016**

Desa/Kelurahan <i>Village/Subdistrict</i>	Pertanian, Perternakan, Perikanan <i>Agriculture, Livestock Breeding, and Fishery</i>	Pertambangan dan Penggalian <i>Mining and Excavation</i>	Industri dan Kerajinan <i>Industry and Crafting</i>	Perdagangan, Hotel dan Restoran <i>Trade, Hotel and Restaurant</i>
(1)	(2)	(3)	(4)	(5)
1. Tengkurak	-	-	-	-
2. Tirtayasa	-	-	-	-
3. Laban	-	-	-	-
4. Puser	-	-	-	-
5. Samparwadi	-	-	-	-
6. Sujung	-	-	-	-
7. Kebon	-	-	-	-
8. Kebuyutan	-	-	-	-
9. Kemanisan	-	-	-	-
10. Pontang Legon	-	-	-	-
11. Susukan	-	-	-	-
12. Alang-alang	-	-	-	-
13. Lontar	-	-	-	-
14. Wargaasara	-	-	-	-

POPULATION

Lanjutan tabel/ *Continued table 3.3*

Desa/Kelurahan <i>Village/Subdistrict</i>	Listrik, Gas, dan Air Minum <i>Electricity, Gas and Water</i>	Transportasi dan Komunikasi <i>Transportation and Communication</i>	Jasa Services	Lainnya <i>Others</i>	Jumlah <i>Total</i>
(1)	(6)	(7)	(8)	(9)	(10)
1. Tengkurak	-	-	-	-	100
2. Tirtayasa	-	-	-	-	100
3. Laban	-	-	-	-	100
4. Puser	-	-	-	-	100
5. Samparwadi	-	-	-	-	100
6. Sujung	-	-	-	-	100
7. Kebon	-	-	-	-	100
8. Kebuyutan	-	-	-	-	100
9. Kemanisan	-	-	-	-	100
10. Pontang Legon	-	-	-	-	100
11. Susukan	-	-	-	-	100
12. Alang-alang	-	-	-	-	100
13. Lontar	-	-	-	-	100
14. Wargasara	-	-	-	-	100

Sumber/ *Source: Kantor Desa Se Kecamatan Tirtayasa / Village Offices in Tirtayasa District*

Tabel 3.4 Penduduk Kecamatan Tirtayasa yang Lahir dan Mati Menurut Desa/Kelurahan dan Jenis Kelamin, 2015
Mortality and Natality by Village/Subdistrict in Tirtayasa District, 2015

Desa/Kelurahan Village/Subdistrict	Lahir Natality			Mati Mortality		
	Lk / M	Pr / F	Jml Sum	Lk / M	Pr / F	Jml Sum
(1)	(2)	(3)	(4)	(5)	(6)	(7)
1. Tengkurak	18	21	39	3	2	5
2. Tirtayasa	13	48	61	5	3	8
3. Laban	29	32	71	2	4	6
4. Puser	14	35	49	3	5	8
5. Samparwadi	21	17	38	5	1	6
6. Sujung	53	37	90	2	6	8
7. Kebon	21	26	47	5	6	11
8. Kebuyutan	18	27	45	9	4	13
9. Kemanisan	21	43	64	7	3	10
10. Pontang Legon	47	39	86	3	5	8
11. Susukan	27	48	75	4	5	9
12. Alang-alang	24	27	51	5	5	10
13. Lontar	52	46	98	13	21	34
14. Wargasara	19	13	32	5	1	6

Sumber/ Source: Kantor Desa Se Kecamatan Tirtayasa/ Village Offices in Tirtayasa District

4

PENDIDIKAN
EDUCATION

<http://serangkab.bps.go.id>

Tabel 4.1 Jumlah Sekolah, Guru dan Murid PAUD/TQA/TPQ/Play Group di Kecamatan Tirtayasa , 2016
Table Number of School, Teacher and Student of Playgroup in Tirtayasa District, 2016

Desa/Kelurahan Village/Subdistrict	Sekolah School		Guru Teacher		Murid Student	
	Negeri State	Swasta Private	L / M	P+L / F	L / M	P / F
(1)	(2)	(3)	(4)	(5)	(6)	(7)
1. Tengkurak	-	1	-	3	14	11
2. Tirtayasa	-	5	-	21	92	138
3. Laban	-	2	-	7	27	29
4. Puser	-	5	-	13	42	27
5. Samparwadi	-	3	-	9	32	32
6. Sujung	-	1	-	4	23	29
7. Kebon	-	1	-	4	26	14
8. Kebuyutan	-	1	-	5	23	31
9. Kemanisan	-	-	-	-	-	-
10. Pontang Legon	-	1	-	4	27	35
11. Susukan	-	1	-	5	22	28
12. Alang-alang	-	-	-	-	-	-
13. Lontar	-	2	-	7	28	28
14. Wargasara	-	-	-	-	-	-
Jumlah/ Total		23	-	82	356	402

Sumber/ Source: KCD Pendidikan Kecamatan Tirtayasa / Head of Tirtayasa District Education Unit

EDUCATION

Tabel 4.2 Jumlah Sekolah, Guru dan Murid Raudhatul Athfal di Kecamatan Tirtayasa , 2016
Table *Number of Schools, Pupils, and Teachers of Islamic Kindergarten in Tirtayasa District, 2016*

Desa/Kelurahan Village/Subdistrict	Sekolah School		Guru Teacher		Murid Student	
	Negeri State	Swasta Private	L / M	P+L / F+	L / M	P / F
(1)	(2)	(3)	(4)	(5)	(6)	(7)
1. Tengkurak	-	1	-	3	16	11
2. Tirtayasa	-	5	-	22	95	117
3. Laban	-	2	-	7	29	31
4. Puser	-	5	-	13	41	29
5. Samparwadi	-	3	-	9	34	35
6. Sujung	-	1	-	4	26	29
7. Kebon	-	1	-	4	28	27
8. Kebuyutan	-	1	-	5	26	34
9. Kemanisan	-	-	-	-	-	-
10. Pontang Legon	-	2	-	4	28	32
11. Susukan	-	1	-	5	31	27
12. Alang-alang	-	-	-	-	-	-
13. Lontar	-	2	-	7	27	31
14. Wargasara	-	-	-	-	-	-
Jumlah/ Total		24	-	83	381	403

Sumber/ Source: KCD Pendidikan Kecamatan Tirtayasa / Head of Tirtayasa District Education Unit

Tabel 4.3 Jumlah Sekolah, Guru dan Murid Taman Kanak-kanak (TK) di Kecamatan Tirtayasa , 2016
Table *Number of Schools, Pupils, and Teachers of Kindergarten in Tirtayasa District, 2016*

Desa/Kelurahan Village/Subdistrict	Sekolah School		Guru Teacher		Murid Student	
	Negeri State	Swasta Private	L / M	P +L/F+M	L / M	P / F
(1)	(2)	(3)	(4)	(5)	(6)	(7)
1. Tengkurak	-	1	-	3	13	15
2. Tirtayasa	-	5	-	21	105	198
3. Laban	-	2	-	7	34	27
4. Puser	-	5	-	13	42	34
5. Samparwadi	-	3	-	9	34	43
6. Sujung	-	1	-	4	24	32
7. Kebon	-	1	-	4	29	25
8. Kebuyutan	-	1	-	5	32	29
9. Kemanisan	-	-	-	-	-	-
10. Pontang Legon	-	2	-	4	29	34
11. Susukan	-	1	-	5	22	31
12. Alang-alang	-	-	-	-	-	-
13. Lontar	-	2	-	7	34	29
14. Wargasara	-	-	-	-	-	-
Jumlah/ Total		24	-	82	398	497

Sumber/ Source: KCD Pendidikan Kecamatan Tirtayasa / Head of Tirtayasa District Education Unit

EDUCATION

Tabel 4.4 Jumlah Sekolah, Guru dan Murid Madrasah Diniyah di Kecamatan Tirtayasa , 2016
Table *Number of Schools, Pupils, and Teachers in Madrasah Diniyah in Tirtayasa District, 2016*

Desa/Kelurahan Village/Subdistrict	Sekolah School		Guru Teacher		Murid Student	
	Negeri State	Swasta Private	L+P/M+F	P / F	L / M	P / F
(1)	(2)	(3)	(4)	(5)	(6)	(7)
1. Tengkurak	-	1	7	-	-	156
2. Tirtayasa	-	3	22	-	-	374
3. Laban	-	-	-	-	-	-
4. Puser	-	3	19	-	-	293
5. Samparwadi	-	3	24	-	-	347
6. Sujung	-	3	23	-	-	286
7. Kebon	-	1	5	-	-	128
8. Kebuyutan	-	1	8	-	-	93
9. Kemanisan	-	2	14	-	-	328
10. Pontang Legon	-	1	7	-	-	173
11. Susukan	-	2	12	-	-	274
12. Alang-alang	-	2	10	-	-	184
13. Lontar	-	2	15	-	-	372
14. Wargasara	-	1	5	-	-	47
Jumlah/ Total	-	24	171	-	-	3055

Sumber/ Source: KCD Pendidikan Kecamatan Tirtayasa / Head of Tirtayasa District Education Unit

Tabel 4.5 Jumlah Sekolah, Guru dan Murid Sekolah Dasar (SD) di Kecamatan Tirtayasa , 2016
Table Number of Schools, Pupils, and Teachers of Elementary School in Tirtayasa District, 2016

Desa/Kelurahan Village/Subdistrict	Sekolah School		Guru Teacher		Murid Student	
	Negeri State	Swasta Private	L / M	P+L /F+M	L / M	P / F
(1)	(2)	(3)	(4)	(5)	(6)	(7)
1. Tengkurak	1	-		14	195	243
2. Tirtayasa	2	1		34	194	208
3. Laban	2	-		19	373	261
4. Puser	1	-		13	164	193
5. Samparwadi	2	-		19	157	157
6. Sujung	2	1		23	289	273
7. Kebon	1	-		9	73	45
8. Kebuyutan	1	-		11	51	73
9. Kemanisan	1	-		18	173	184
10. Pontang Legon	2	-		19	148	179
11. Susukan	3	-		21	147	268
12. Alang-alang	2	-		22	154	164
13. Lontar	3	-		28	395	368
14. Wargasara	1	-		10	103	94
Jumlah/ Total	24	2		260	2616	2710

Sumber/ Source: KCD Pendidikan Kecamatan Tirtayasa / Head of Tirtayasa District Education Unit

EDUCATION

Tabel 4.6 Jumlah Sekolah, Guru dan Murid Madrasah Ibtidaiyah (MI) di Kecamatan Tirtayasa , 2016
Table Number of Schools, Pupils, and Teachers of Islamic Elementary School in Tirtayasa District, 2016

Desa/Kelurahan Village/Subdistrict	Sekolah School		Guru Teacher		Murid Student	
	Negeri State	Swasta Private	L / M	P+L /F+M	L / M	P / F
(1)	(2)	(3)	(4)	(5)	(6)	(7)
1. Tengkurak	-	-	-	-	-	-
2. Tirtayasa	-	1	3	11	34	29
3. Laban	-	-	-	-	-	-
4. Puser	-	-	-	-	-	-
5. Samparwadi	-	-	-	-	-	-
6. Sujung	-	-	-	-	-	-
7. Kebon	-	-	-	-	-	-
8. Kebuyutan	-	1	-	11	74	94
9. Kemanisan	-	1	5	2	136	87
10. Pontang Legon	-	-	-	-	-	-
11. Susukan	-	2	-	25	193	184
12. Alang-alang	-	-	-	-	-	-
13. Lontar	-	1	-	12	86	73
14. Wargasara	-	-	-	-	-	-
Jumlah/ Total	-	6	8	61	61	523

Sumber/ Source: KCD Pendidikan Kecamatan Tirtayasa / Head of Tirtayasa District Education Unit

Tabel 4.7 Jumlah Sekolah, Murid, dan Guru Sekolah Menengah Pertama (SMP) di Kecamatan Tirtayasa , 2016
Table Number of Schools, Pupils, and Teachers of Junior High School in Tirtayasa District, 2016

Desa/Kelurahan Village/Subdistrict	Sekolah School		Guru Teacher		Murid Student	
	Negeri State	Swasta Private	L / M	P / F	L / M	P / F
(1)	(2)	(3)	(4)	(5)	(6)	(7)
1. Tengkurak	1	-	11	-	65	59
2. Tirtayasa	1	1	18	13	385	295
3. Laban	-	-	-	-	-	-
4. Puser	-	-	-	-	-	-
5. Samparwadi	-	-	-	-	-	-
6. Sujung	-	-	-	-	-	-
7. Kebon	-	-	-	-	-	-
8. Kebuyutan	-	-	-	-	-	-
9. Kemanisan	-	-	-	-	-	-
10. Pontang Legon	-	-	-	-	-	-
11. Susukan	-	-	-	-	-	-
12. Alang-alang	-	-	-	-	-	-
13. Lontar	1	-	8	5	54	53
14. Wargasara	1	-	16	2	38	57
Jumlah/ Total	4	1	53	16	542	464

Sumber/ Source: KCD Pendidikan Kecamatan Tirtayasa / Head of Tirtayasa District Education Unit

EDUCATION

Tabel 4.8 Jumlah Sekolah, Guru dan Murid Madrasah Tsanawiyah (MTs) di Kecamatan Tirtayasa , 2016
Table Number of Schools, Pupils, and Teachers of Islamic Junior High School in Tirtayasa District, 2016

Desa/Kelurahan Village/Subdistrict	Sekolah School		Guru Teacher		Murid Student	
	Negeri State	Swasta Private	L / M	P / F	L / M	P / F
(1)	(2)	(3)	(4)	(5)	(6)	(7)
1. Tengkurak	-	-	-	-	-	-
2. Tirtayasa	-	1	14	7	237	163
3. Laban	-	-	-	-	-	-
4. Puser	-	-	-	-	-	-
5. Samparwadi	-	-	-	-	-	-
6. Sujung	-	1	14	10	57	51
7. Kebon	-	-	-	-	-	-
8. Kebuyutan	-	-	-	-	-	-
9. Kemanisan	-	1	15	7	147	169
10. Pontang Legon	-	-	-	-	-	-
11. Susukan	-	1	9	14	175	172
12. Alang-alang	-	-	-	-	-	-
13. Lontar	-	1	6	13	106	136
14. Wargasara	-	-	-	-	-	-
Jumlah/ Total	-	5	75	51	722	691

Sumber/ Source: KCD Pendidikan Kecamatan Tirtayasa / Head of Tirtayasa District Education Unit

Tabel 4.9 Jumlah Sekolah, Guru dan Murid Sekolah Menengah Umum (SMU) di Kecamatan Tirtayasa , 2016
Table *Number of Schools, Pupils, and Teachers of High School in Tirtayasa District, 2016*

Desa/Kelurahan Village/Subdistrict	Sekolah School		Guru Teacher		Murid Student	
	Negeri State	Swasta Private	L / M	P / F	L / M	P / F
(1)	(2)	(3)	(4)	(5)	(6)	(7)
1. Tengkurak	-	-	-	-	-	-
2. Tirtayasa	1	-	22	29	326	274
3. Laban	-	-	-	-	-	-
4. Puser	-	-	-	-	-	-
5. Samparwadi	-	-	-	-	-	-
6. Sujung	-	-	-	-	-	-
7. Kebon	-	-	-	-	-	-
8. Kebuyutan	-	-	-	-	-	-
9. Kemanisan	-	-	-	-	-	-
10. Pontang Legon	-	-	-	-	-	-
11. Susukan	-	-	-	-	-	-
12. Alang-alang	-	-	-	-	-	-
13. Lontar	-	-	-	-	-	-
14. Wargasara	-	-	-	-	-	-
Jumlah/ Total	1	-	22	29	326	274

Sumber/ Source: KCD Pendidikan Kecamatan Tirtayasa / Head of Tirtayasa District Education Unit

EDUCATION

Tabel 4.10 Jumlah Sekolah, Guru dan Murid Madrasah Aliyah (MA) di Kecamatan Tirtayasa , 2016
Table *Number of Schools, Pupils, and Teachers of Islamic High School in Tirtayasa District, 2016*

Desa/Kelurahan Village/Subdistrict	Sekolah School		Guru Teacher		Murid Student	
	Negeri State	Swasta Private	L / M	P / F	L / M	P / F
(1)	(2)	(3)	(4)	(5)	(6)	(7)
1. Tengkurak	-	-	-	-	-	-
2. Tirtayasa	-	1	12	8	347	292
3. Laban	-	-	-	-	-	-
4. Puser	-	-	-	-	-	-
5. Samparwadi	-	-	-	-	-	-
6. Sujung	-	1	12	5	64	73
7. Kebon	-	-	-	-	-	-
8. Kebuyutan	-	-	-	-	-	-
9. Kemanisan	-	1	26	7	274	192
10. Pontang Legon	-	-	-	-	-	-
11. Susukan	-	1	12	5	193	262
12. Alang-alang	-	-	-	-	-	-
13. Lontar	-	-	-	-	-	-
14. Wargasara	-	-	-	-	-	-
Jumlah/ Total	-	4	74	27	878	819

Sumber/ Source: KCD Pendidikan Kecamatan Tirtayasa / Head of Tirtayasa District Education Unit

Tabel 4.11 Jumlah Sekolah, Guru dan Murid Sekolah Menengah Kejuruan (SMK) di Kecamatan Tirtayasa , 2016
Table Number of Schools, Pupils, and Teachers of Vocational High School in Tirtayasa District, 2016

Desa/Kelurahan Village/Subdistrict	Sekolah School		Guru Teacher		Murid Student	
	Negeri State	Swasta Private	L / M	P / F	L / M	P / F
(1)	(2)	(3)	(4)	(5)	(6)	(7)
1. Tengkurak	-	-	-	-	-	-
2. Tirtayasa	-	2	34	18	284	426
3. Laban	-	-	-	-	-	-
4. Puser	-	-	-	-	-	-
5. Samparwadi	-	-	-	-	-	-
6. Sujung	-	-	-	-	-	-
7. Kebon	-	-	-	-	-	-
8. Kebuyutan	-	-	-	-	-	-
9. Kemanisan	-	-	-	-	-	-
10. Pontang Legon	-	-	-	-	-	-
11. Susukan	-	-	-	-	-	-
12. Alang-alang	-	-	-	-	-	-
13. Lontar	-	-	-	-	-	-
14. Wargasara	-	-	-	-	-	-
Jumlah/ Total	-	2	34	18	284	426

Sumber/ Source: KCD Pendidikan Kecamatan .../ Head of ... District Education Unit

Tabel 4.12 Jumlah Fakultas, Jurusan, Pengajar/Dosen dan Mahasiswa Pada Akademi/Perguruan Tinggi di Kecamatan Tirtayasa , 2016
Number of Faculties, Majors, Lecturers and Students of Academy/University in Tirtayasa District, 2016

Akademi/ Perguruan Tinggi <i>Academy/ University</i>	Jumlah Fakultas <i>Faculty</i>	Jumlah Jurusan <i>Major</i>	Pengajar/Dosen <i>Lecturer</i>		Mahasiswa <i>Student</i>	
			L / M	P / F	L / M	P / F
(1)	(2)	(3)	(4)	(5)	(6)	(7)
-	-	-	-	-	-	-
Jumlah/ Total	-	-	-	-	-	-

Sumber/ Source: Akademi dan Perguruan Tinggi se Kecamatan Tirtayasa / *Academies and Universities in Tirtayasa District*

Tabel 4.13 Jumlah Lembaga Kursus, Pengajar dan Siswa di Kecamatan Tirtayasa , 2016
Table *Number of Course Institutions, Instructures and Students in Tirtayasa District, 2016*

Jenis Kursus/ Keterampilan <i>Type of Course</i>	Lembaga <i>Institutions</i>	Pengajar <i>Instructure</i>		Siswa <i>Student</i>	
		L / M	P / F	L / M	P / F
(1)	(3)	(3)	(4)	(5)	(6)
Kursus computer	kreatingdo	4	5	83	94
Jumlah/ Total	1	4	5	83	94

Sumber/ Source: UPTD Pendidikan dan Lembaga Kursus/ *Education Unit of Tirtayasa District and Courses Institutions*

Tabel 4.14 Jumlah Pasantren, Kyai dan Santri di Kecamatan Tirtayasa ,
Table **2016**
Number of Islamic Boarding Schools, Clerics and Students in
Tirtayasa District, 2016

Desa/Kelurahan Village/Subdistrict	Pasantren Islamic Boarding School	Kyai/Ustadz/Pengajar Cleric/Lecturer		Santri Students	
		L / M	P / F	L / M	P / F
(1)	(3)	(3)	(4)	(5)	(6)
1. Tengkurak	-	-	-	-	-
2. Tirtayasa	3	8	-
3. Laban	2	5
4. Puser	-	-	-	-	-
5. Samparwadi	3	5
6. Sujung	-	-	-	-	-
7. Kebon	-	-	-	-	-
8. Kebuyutan	-	-	-	-	-
9. Kemanisan	1	3
10. Pontang Legon	-	-	-	-	-
11. Susukan	1	9
12. Alang-alang	-	-	-	-	-
13. Lontar	2	6
14. Wargasara	-	-	-	-	-
Jumlah/ Total	12	36

Sumber/ Source: Pesantren dan KUA Kecamatan Tirtayasa / Islamic Boarding Schools and Office of Religious Affairs of Tirtayasa District

5

KESEHATAN DAN KB

HEALTH AND BIRTH CONTROL

<http://serangkab.bps.go.id>

Tabel 5.1 Jumlah Sarana Kesehatan di Kecamatan Tirtayasa , 2016
Table Number of Health Facilities in Tirtayasa District, 2016

Desa/Kelurahan Village/Subdistrict	Rumah Sakit Hospital	Rumah Bersalin Maternity Hospital	Poliklinik/ Balai Pengobatan Policlinic/Clinic	Puskesmas/ Puskesmas Pembantu Public Health Center
(1)	(3)	(3)	(4)	(5)
1. Tengkurak	-	-	-	-
2. Tirtayasa	-	-	2	1
3. Laban	-	-	-	-
4. Puser	-	-	-	-
5. Samparwadi	-	-	-	-
6. Sujung	-	-	-	-
7. Kebon	-	-	-	-
8. Kebuyutan	-	-	-	-
9. Kemanisan	-	-	-	-
10. Pontang Legon	-	-	-	-
11. Susukan	-	-	-	-
12. Alang-alang	-	-	-	-
13. Lontar	-	-	-	-
14. Wargasara	-	-	-	1
Jumlah/ Total	-	-	2	2

Lanjutan tabel/ *Continued table 5.1*

Desa/Kelurahan <i>Village/Subdistrict</i>	Tempat Praktek Dokter <i>Doctor's Office</i>	Tempat Praktek Bidan <i>Midwife Practices</i>	Poskesdes <i>Village Health Center</i>	Polindes <i>Village Maternity Center</i>
(1)	(6)	(7)	(8)	(9)
1. Tengkurak	-	1	1	
2. Tirtayasa	2	1	-	-
3. Laban	-	1	-	-
4. Puser	-	1	1	1
5. Samparwadi	-	1	1	-
6. Sujung	-	1	-	-
7. Kebon	-	1	1	-
8. Kebuyutan	-	1	-	-
9. Kemanisan	-	1	1	-
10. Pontang Legon		1	1	1
11. Susukan	-	1	-	-
12. Alang-alang	-	1	-	-
13. Lontar	-	1	1	-
14. Wargasara	-	1		
Jumlah/ Total	2	14	7	2

Lanjutan tabel/ *Continued table 5.1*

Desa/Kelurahan <i>Village/Subdistrict</i>	Posyandu <i>Integrated Health Center</i>	Apotek <i>Pharmacy</i>	Toko Khusus Obat/Jamu <i>Drugstore</i>
(1)	(10)	(11)	(12)
1. Tengkurak	4	-	-
2. Tirtayasa	4	1	2
3. Laban	3	-	-
4. Puser	3	-	-
5. Samparwadi	6	-	-
6. Sujung	6	-	-
7. Kebon	3	-	-
8. Kebuyutan	3	-	-
9. Kemanisan	4	-	-
10. Pontang Legon	4	-	-
11. Susukan	5	-	-
12. Alang-alang	3	-	-
13. Lontar	5	-	-
14. Wargasara	2	-	-
Jumlah/ Total	55	1	2

Sumber/ *Source*: Kantor Desa Se Kecamatan Tirtayasa / *Village Offices in Tirtayasa District*

Tabel 5.2 Jumlah Tenaga Kesehatan di Kecamatan Tirtayasa , 2016
Table Number of Health Worker in Tirtayasa District, 2016

Tenaga Kesehatan <i>Health Worker</i>	Laki-Laki <i>Male</i>	Prempuan <i>Female</i>	Jumlah <i>Total</i>
(1)	(2)	(3)	(4)
Dokter Umum / <i>General Practitioner</i>	1	-	1
Dokter Gigi / <i>Dentist</i>	-	1	1
Dokter Spesialis / <i>Medical Specialist</i>	-	-	-
Bidan / <i>Midwife</i>	-	20	20
Perawat / <i>Nurse Practitioner</i>	3	10	13
Mantri Kesehatan / <i>Registered Nurse</i>	-	-	-
Dukun Bayi Terlatih / <i>Trained TBA (Traditional Birth Attendant)</i>	-	24	24
Dukun Bayi Tidak Terlatih / <i>Untrained TBA (Traditional Birth Attendant)</i>	-	18	18
Ahli Gizi / <i>Nutritionist</i>	-	-	-
Apoteker / <i>Pharmacist</i>	-	-	-
Tenaga Kesehatan lain / <i>Other Health Worker</i>	2	3	5
Jumlah/ <i>Total</i>	6	76	82

Sumber/ *Source*: Puskesmas Kecamatan Tirtayasa / *Public Health Center of Tirtayasa District*

Tabel 5.3 Jumlah Pasien Menurut Jenis Penyakit di Puskesmas Kecamatan Tirtayasa , 2016
Number of Patients by Type of Disease in Public Health Center of Tirtayasa District, 2016

	Jenis Penyakit <i>Disease</i>	Jumlah Pasien <i>Patients</i>	Persentase (%) <i>Percentage (%)</i>
	(1)	(2)	(3)
1.	Kolera / <i>Cholera</i>	-	0 %
2.	Diare / <i>Diarrhea</i>	796	25,12%
3.	Disentri / <i>Dysentery</i>	364	5,86%
4.	Tifoid / <i>Typhoid</i>	18	0,42%
5.	Tb. Paru BTA+ / <i>Tb. with Acid Resistant Mycobacterium</i>	246	4,26%
6.	Tb. Paur Klinis / <i>Clinical Tuberculosis</i>	328	5,25 %
7.	Kusta PB / <i>Leprosy PB</i>	7	2,06 %
8.	Kusta MB / <i>Leprosy MB</i>	6	1,06 %
9.	Difteri / <i>Diphtheria</i>	-	0 %
10.	Batuk Rejan / <i>Whooping Cough</i>	2	0,03 %
11.	Tetanus / <i>Tetanus</i>	-	0,02%
12.	Polioomyelitis Akut / <i>Acute Poliomyelitis</i>	-	0 %
13.	Campak / <i>Measles</i>	-	0 %
14.	Hepatitis / <i>Hepatitis</i>	-	0 %
15.	Rabies / <i>Rabies</i>	-	0 %

Lanjutan tabel/ *Continued table 5.3*

Jenis Penyakit	Jumlah Pasien	Prosentase (%)
(1)	(2)	(3)
16. DBD (DHF) / <i>Dengue Haemorrhagic Fever (DHF)</i>		
17. Malaria Falciparum / <i>Malaria Falciparum</i>		
18. Malaria Vivax / <i>Malaria Vivax</i>		
19. Batuk / <i>Cough</i>		
20. Demam / <i>Fever</i>	1038	9,6 %
21. Sekit Kepala / <i>Headache</i>	-	0 %
22. Infeksi Gonorho / <i>Gonorrhea Infection</i>	-	0 %
23. Frambusia / <i>Yaws</i>	-	0 %
24. Filariasis / <i>Filariasis</i>	-	0 %
25. Infeksi Saluran Pernafasean Atas / <i>Upper Respiratory Tract Infection</i>	1.634	24,66 %
26. Pneumonia / <i>Pneumonia</i>	10	0,15 %
27. Bronchitis / <i>Bronchitis</i>	816	13,32 %
28. Influenza / <i>Influenza</i>	1.415	21,36 %
29. Teranus Neonatorum / <i>Tetanus Neonatorum</i>	1	0,02 %
30. Lain-lain / <i>Others</i>	-	0 %
Jumlah/ Total	1038	100 %

Sumber/ Source: Puskesmas Kecamatan Tirtayasa / *Public Health Center of Tirtayasa District*

Tabel 5.4 Target dan Realisasi Imunisasi di Kecamatan Tirtayasa , 2016
Table
Targets and Realization of Vaccination in Tirtayasa District, 2016

Desa/Kelurahan Village/Subdistrict	BCG		DPT – HB 1	
	Target Target	Realisasi Realization	Target Target	Realisasi Realization
(1)	(2)	(3)	(4)	(5)
1. Tengkurak	7	111,1%	30	106,7 %
2. Tirtayasa	62	104,3%	62	86,4 %
3. Laban	37	118,1%	55	100 %
4. Puser	41	102,2%	57	131,1 %
5. Samparwadi	74	146,2%	30	101,9 %
6. Sujung	52	108%	80	109,2 %
7. Kebon	52	101,6%	50	100 %
8. Kebuyutan	40	123,6%	66	141,9 %
9. Kemanisan	62	108,3%	41	90 %
10. Pontang Legon	51	121,6%	38	119,6 %
11. Susukan	78	141,9%	81	94,6 %
12. Alang-alang	50	71,6%	54	76,1 %
13. Lontar	69	137%	65	117,7 %
14. Wargasara	30	163%	22	140,9 %
Jumlah/ Total	686	118,5 %	731	108,3 %

Lanjutan tabel/ *Continued table 5.4*

Desa/Kelurahan <i>Village/Subdistrict</i>	DPT 2		DPT 3	
	Target <i>Target</i>	Realisasi <i>Realization</i>	Target <i>Target</i>	Realisasi <i>Realization</i>
(1)	(6)	(7)	(8)	(9)
1. Tengkurak	12	113,3 %	28	106,7 %
2. Tirtayasa	28	87,9 %	29	100 %
3. Laban	10	118,6 %	20	153,5 %
4. Puser	4	128,9 %	29	140 %
5. Samparwadi	14	90,4 %	35	109,6 %
6. Sujung	32	102,3 %	46	81,6 %
7. Kebon	14	96,5 %	34	100 %
8. Kebuyutan	18	102,3 %	27	116,3 %
9. Kemanisan	9	91,7 %	36	110 %
10. Pontang Legon	21	137,3 %	60	166,7 %
11. Susukan	34	120,3 %	70	152,7 %
12. Alang-alang	15	70,1 %	41	85,7 %
13. Lontar	25	103,9 %	62	124,7 %
14. Wargasara	18	177,3 %	11	227,3 %
Jumlah/ Total	254	110,0 %	528	126,7 %

Lanjutan tabel/ *Continued table 5.4*

Desa/Kelurahan <i>Village/Subdistrict</i>	Campak		Polio	
	Target <i>Target</i>	Realisasi <i>Realization</i>	Target <i>Target</i>	Realisasi <i>Realization</i>
(1)	(6)	(7)	(8)	(9)
1. Tengkurak	28	91,1 %	21	111 %
2. Tirtayasa	62	93,9 %	46	98,5 %
3. Laban	34	130,2 %	35	107 %
4. Puser	30	124 %	23	122,2 %
5. Samparwadi	19	78,8 %	26	113,5 %
6. Sujung	73	78,2 %	62	112,6 %
7. Kebon	40	105,3 %	43	89,5 %
8. Kebuyutan	36	93 %	34	132,6 %
9. Kemanisan	35	78 %	32	125 %
10. Pontang Legon	55	129 %	46	131 %
11. Susukan	73	98 %	65	90,5 %
12. Alang-alang	26	80 %	39	92,5 %
13. Lontar	81	111 %	44	155,6 %
14. Wargasara	7	172 %	24	236,4 %
Jumlah/ <i>Total</i>	469	104,5 %	540	122,7 %

Sumber/ *Source*: Puskesmas Kecamatan Tirtayasa / *Public Health Center of Tirtayasa District*

Tabel 5.5 Jumlah Penerima Jamkesmas di Kecamatan Tirtayasa , 2015
Table *Number of Recipients of Jamkesmas in Tirtayasa District, 2015*

Desa/Kelurahan <i>Village/Subdistrict</i>	Penerima Jamkesmas <i>Recipient of Jamkesmas</i>	Anggota Dilayani Pelayanan Kesehatan Kesehatan <i>Members Served by Health Care</i>
(1)	(2)	(3)
1. Tengkurak	1.779	1.932
2. Tirtayasa	1.617	833
3. Laban	956	425
4. Puser	1.393	438
5. Samparwadi	982	567
6. Sujung	925	985
7. Kebon	560	450
8. Kebuyutan	901	590
9. Kemanisan	1.360	651
10. Pontang Legon	1.180	781
11. Susukan	1.674	988
12. Alang-alang	1.214	1.231
13. Lontar	1.942	2.421
14. Wargasara	776	432
Jumlah/ Total	17.259	12.724

Sumber/ Source: Puskesmas Kecamatan Tirtayasa / Public Health Center of Tirtayasa District

Tabel 5.6 Jumlah Kelahiran, Bayi Berat Lahir Rendah dan Balita/Anak Gizi Buruk di Kecamatan Tirtayasa , 2016
Table *Number of Births, Low Birthweight Infants and Malnourished Child/Toddler in Tirtayasa District, 2016*

Desa/Kelurahan <i>Village/Subdistrict</i>	Kelahiran / Births			Balita/Anak Gizi Buruk <i>Malnourished Child/Toddler</i>
	Lahir hidup <i>Live Birth</i>	Berat bayi Lahir Rendah (BBLR) <i>Low Birthweight Infants (LBW)</i>	% BBLR % LBW	
(1)	(2)	(3)	(4)	(5)
1. Tengkurak	31	-	0 %	1
2. Tirtayasa	53	-	0 %	1
3. Laban	71	-	0 %	-
4. Puser	79	1	1,2 %	3
5. Samparwadi	37	2	5,4 %	-
6. Sujung	35	-	0 %	-
7. Kebon	43	-	0 %	-
8. Kebuyutan	50	1	2 %	-
9. Kemanisan	37	-	0 %	-
10. Pontang Legon	89	3	3,4 %	3
11. Susukan	63	-	0 %	-
12. Alang-alang	98	-	0 %	-
13. Lontar	46	2	4,3 %	4
14. Wargasara	-	-	-	-
Jumlah/ Total	737	9	1,2 %	12

Sumber/ Source: Puskesmas Kecamatan Tirtayasa / Public Health Center of Tirtayasa District

Tabel 5.7 Cakupan Kunjungan Ibu Hamil, K1 dan K2 di Kecamatan Tirtayasa , 2016
Table Antenatal Care in Tirtayasa District, 2016

Desa/Kelurahan Village/Subdistrict	Ibu Hamil Expectant Mother	K1 Trimester 1	%	K2 Trimester 2	%
(1)	(2)	(3)	(4)	(5)	(6)
1. Tengkurak	48	40	83,3 %	41	85,4 %
2. Tirtayasa	71	74	104,2 %	66	93 %
3. Laban	49	67	136,7 %	49	100 %
4. Puser	52	56	107,7 %	57	109 %
5. Samparwadi	61	65	106,6 %	58	95,1 %
6. Sujung	94	96	102,1 %	87	92,6 %
7. Kebon	65	74	113 %	61	93,8 %
8. Kebuyutan	48	46	95,8 %	43	89,6 %
9. Kemanisan	69	75	108 %	71	102 %
10. Pontang Legon	59	95	161 %	73	123 %
11. Susukan	80	86	107 %	72	90 %
12. Alang-alang	68	65	95,6 %	72	76,5 %
13. Lontar	87	102	117 %	89	102 %
14. Wargasara	22	38	172 %	2128	127 %
Jumlah/ Total	873	927	106,2 %	834	95,5 %

Sumber/ Source: Puskesmas Kecamatan Tirtayasa / Public Health Center of Tirtayasa District

Tabel 5.8 Jumlah Persalinan yang Ditolong Tenaga Kesehatan di Kecamatan Tirtayasa , 2016
Table *Number of Births Assisted by Health Workers in Tirtayasa District, 2016*

Desa/Kelurahan Village/Subdistrict	Target Target	Realisasi Realization	%
(1)	(2)	(3)	(4)
1. Tengkurak	48	44	97,5 %
2. Tirtayasa	71	66	107 %
3. Laban	47	43	119 %
4. Puser	53	47	115 %
5. Samparwadi	60	53	103 %
6. Sujung	94	86	103 %
7. Kebon	65	59	87 %
8. Kebuyutan	49	42	120 %
9. Kemanisan	68	61	109 %
10. Pontang Legon	59	50	214 %
11. Susukan	81	76	101 %
12. Alang-alang	67	66	93 %
13. Lontar	86	80	109 %
14. Wargasara	22	18	157 %
Jumlah/ Total	870	605	112,6%

Sumber/ Source: Puskesmas Kecamatan Tirtayasa / Public Health Center of Tirtayasa District

Tabel 5.9 Jumlah Sarana Pelayanan KB di Kecamatan Tirtayasa , 2016
Table Number of Birth Control Facilities in Tirtayasa District, 2016

Desa/Kelurahan	KKB	PKBRS	Pos KB	Posyandu Integrated Health Center	Bidan Praktek Midwives
(1)	(2)	(3)	(4)	(5)	(6)
1. Tengkurak	-	-	-	4	1
2. Tirtayasa	1	1	1	3	1
3. Laban	-	-	-	3	1
4. Puser	-	-	-	3	1
5. Samparwadi	-	-	-	6	1
6. Sujung	-	-	-	6	1
7. Kebon	-	-	-	3	1
8. Kebuyutan	-	-	-	3	1
9. Kemanisan	-	-	-	4	1
10. Pontang Legon	-	-	-	4	1
11. Susukan	-	-	-	5	1
12. Alang-alang	-	-	-	3	1
13. Lontar	-	-	-	5	1
14. Wargasara	-	-	-	2	1
Jumlah/ Total	1	1	1	54	14

Sumber/ Source: Puskesmas Kecamatan Tirtayasa / Public Health Center of Tirtayasa District

Tabel 5.10 Jumlah Pasangan Usia Subur (PUS) di Kecamatan Tirtayasa , 2016
Table *Number of Couples of Reproductive Age in Tirtayasa District, 2016*

Desa/Kelurahan Village/Subdistrict	Jumlah Pasangan Usia Subur (PUS) Couples of Reproductive Age
(1)	(2)
1. Tengkurak	725
2. Tirtayasa	542
3. Laban	521
4. Puser	542
5. Samparwadi	457
6. Sujung	910
7. Kebon	534
8. Kebuyutan	338
9. Kemanisan	459
10. Pontang Legon	439
11. Susukan	690
12. Alang-alang	462
13. Lontar	931
14. Wargasara	352
Jumlah/ Total	7902

Sumber/ Source: Pengawas PLKB Kecamatan Tirtayasa / Supervisor of PLKB of Tirtayasa District

Tabel 5.11 Jumlah Peserta KB Lestari Menurut Kelompok Umur di Kecamatan Tirtayasa , 2016
Table Number of Participants of KB Lestari by Age Group in Tirtayasa District, 2016

Desa/Kelurahan Village/Subdistrict	Peserta KB Lestari Participants of KB Lestari			
	5 Tahun 5 Years	10 Tahun 10 Years	15 Tahun 15 Years	20 Tahun 20 Years
(1)	(2)	(3)	(4)	(5)
1. Tengkurak		18	2	5
2. Tirtayasa		23	6	3
3. Laban		4	3	0
4. Puser		29	6	0
5. Samparwadi		22	4	2
6. Sujung		14	5	5
7. Kebon		16	4	2
8. Kebuyutan		8	2	0
9. Kemanisan		4	2	1
10. Pontang Legon		18	6	2
11. Susukan		34	1	6
12. Alang-alang		14	2	0
13. Lontar		5	4	6
14. Wargasara		4	3	0
Jumlah/ Total		234	51	31

Sumber/ Source: Pengawas PLKB Kecamatan Tirtayasa / Supervisor of PLKB of Tirtayasa District

Tabel 5.12 Jumlah Akseptor KB Menurut Alat/Cara Kontrasepsi di Kecamatan Tirtayasa , 2016
Table *Number of Family Planning (KB) Acceptor by Birth Control Methods in Tirtayasa District, 2016*

Desa/Kelurahan Village/Subdistrict	IUD	MOP/MOW	Implant
(1)	(2)	(3)	(4)
1. Tengkurak	2	4/4	27
2. Tirtayasa	5	5/31	27
3. Laban	4	3/8	26
4. Puser	4	6/6	16
5. Samparwadi	9	1/3	39
6. Sujung	6	6/5	28
7. Kebon	5	7/6	20
8. Kebuyutan	2	0/1	17
9. Kemanisan	1	0/7	10
10. Pontang Legon	5	13/2	11
11. Susukan	7	16/9	23
12. Alang-alang	3	13/7	31
13. Lontar	8	67/11	15
14. Warga-sara	2	0/0	5
Jumlah/ Total	63	141/100	282

Lanjutan tabel/ Continued table 5.12

Desa/Kelurahan Village/Subdistrict	Suntik Injection	Pil Pill	Kondom Condom	Lainnya Others
(1)	(2)	(3)	(4)	(5)
1. Tengkurak	212	36	2	-
2. Tirtayasa	233	44	-	-
3. Laban	132	47	1	-
4. Puser	220	43	1	-
5. Samparwadi	233	43	-	-
6. Sujung	322	75	1	-
7. Kebon	242	71	2	-
8. Kebuyutan	76	34	2	-
9. Kemanisan	180	43	1	-
10. Pontang Legon	243	47	-	-
11. Susukan	318	46	1	-
12. Alang-alang	129	42	2	-
13. Lontar	342	81	1	-
14. Wargasara	14	7	-	-
Jumlah/ Total	2993	659	14	-

Sumber/ Source: Pengawas PLKB Kecamatan Tirtayasa / Supervisor of PLKB of Tirtayasa District

6

SOSIAL LAINNYA

OTHER SOCIAL AFFAIRS

<http://serangkab.bps.go.id>

Tabel 6.1 Jumlah Keluarga Menurut Tahapan Keluarga Sejahtera di Kecamatan Tirtayasa , 2016
Table Number of Families by Prosperity Level in Tirtayasa District, 2016

Desa/Kelurahan Village/Subdistrict	Pra KS	KS I	KS II	KS III	KS III Plus
(1)	(2)	(3)	(4)	(5)	(6)
1. Tengkurak	203	138	122	124	126
2. Tirtayasa	114	446	243	138	34
3. Laban	216	245	122	126	124
4. Puser	224	322	142	16	19
5. Samparwadi	316	342	74	32	2
6. Sujung	243	576	302	96	34
7. Kebon	216	543	116	29	31
8. Kebuyutan	147	208	102	93	32
9. Kemanisan	136	374	164	86	24
10. Pontang Legon	215	362	120	10	8
11. Susukan	348	371	308	136	321
12. Alang-alang	152	468	121	24	26
13. Lontar	369	503	206	132	321
14. Wargasara	128	104	42	34	21
Jumlah/ Total	2937	5012	2084	1076	1123

Sumber/ Source: Pengawas PLKB Kecamatan Tirtayasa / Supervisor of PLKB of Tirtayasa District

Tabel 6.2 Jumlah dan Persentase Keluarga Penerima Bantuan Program Keluarga Harapan (PKH) di Kecamatan Tirtayasa , 2016
Number and Percentage of Recipient of Program Keluarga Harapan (PKH) in Tirtayasa District, 2016

Desa/Kelurahan Village/Subdistrict	Jenis Keluarga Family	Persentase (%) Percentage (%)
(1)	(2)	(3)
1. Tengkurak	46	6,38
2. Tirtayasa	51	13,27
3. Laban	13	3,06
4. Puser	28	7,14
5. Samparwadi	39	9,69
6. Sujung	16	4,08
7. Kebon	10	2,81
8. Kebuyutan	25	7,40
9. Kemanisan	30	7,14
10. Pontang Legon	24	5,10
11. Susukan	38	7,91
12. Alang-alang	58	11,99
13. Lontar	71	12,50
14. Wargasara	18	1,53
Jumlah/ Total	467	100,00

Sumber/ Source: UP PKH / PKH Unit of Tirtayasa District

Tabel 6.3 Kondisi Bangunan Tempat Tinggal di Kecamatan Tirtayasa ,
Table 2016
*The Condition of Residential Buildings in Tirtayasa District,
 2016*

Desa/Kelurahan <i>Village/Subdistrict</i>	Kondisi Bangunan / <i>Residential Buildings Condition</i>		
	Permanen <i>Permanent</i>	Semi Permanen <i>Semi Permanent</i>	Tidak Permanen <i>Impermanent</i>
(1)	(2)	(3)	(4)
1. Tengkurak	-	-	-
2. Tirtayasa	-	-	-
3. Laban	-	-	-
4. Puser	-	-	-
5. Samparwadi	-	-	-
6. Sujung	-	-	-
7. Kebon	-	-	-
8. Kebuyutan	-	-	-
9. Kemanisan	-	-	-
10. Pontang Legon	-	-	-
11. Susukan	-	-	-
12. Alang-alang	-	-	-
13. Lontar	-	-	-
14. Wargasara	-	-	-
Jumlah/ Total	-	-	-

Sumber/ *Source*: Kantor Desa Se Kecamatan Tirtayasa / *Village Offices in Tirtayasa District*

Tabel 6.4 Persentase Jumlah Pemeluk Agama di Kecamatan Tirtayasa
Table , 2016
Percentage of Believer in Tirtayasa District, 2016

Desa/Kelurahan Village/Subdistrict	Islam Islam	Katolik Catholic	Protestan Protestant	Hindu Hindu	Budha Budha
(1)	(2)	(3)	(4)	(5)	(6)
1. Tengkurak	100 %	-	-	-	-
2. Tirtayasa	100 %	-	-	-	-
3. Laban	100 %	-	-	-	-
4. Puser	100 %	-	-	-	-
5. Samparwadi	100 %	-	-	-	-
6. Sujung	100 %	-	-	-	-
7. Kebon	100 %	-	-	-	-
8. Kebuyutan	100 %	-	-	-	-
9. Kemanisan	100 %	-	-	-	-
10. Pontang Legon	100 %	-	-	-	-
11. Susukan	100 %	-	-	-	-
12. Alang-alang	100 %	-	-	-	-
13. Lontar	100 %	-	-	-	-
14. Wargasara	100%	-	-	-	-
Jumlah/ Total	100 %	-	-	-	-

Sumber/ Source: KUA Kecamatan Tirtayasa / Office of Religious Affairs of Tirtayasa District

Tabel 6.5 Jumlah Tempat Peribadatan di Kecamatan Tirtayasa , 2016
Table Number of Worship Facilities in Tirtayasa District, 2016

Desa/Kelurahan Village/Subdistrict	Masjid Mosque	Mushola Musholla	Majlis'talim Majlis'talim	Geraja Church	Lainnya Others
(1)	(2)	(3)	(4)	(5)	(6)
1. Tengkurak	1	5	-	-	-
2. Tirtayasa	2	8	-	-	-
3. Laban	2	4	-	-	-
4. Puser	4	12	-	-	-
5. Samparwadi	3	9	-	-	-
6. Sujung	3	13	-	-	-
7. Kebon	2	5	-	-	-
8. Kebuyutan	2	6	-	-	-
9. Kemanisan	2	5	-	-	-
10. Pontang Legon	4	6	-	-	-
11. Susukan	2	10	-	-	-
12. Alang-alang	3	8	-	-	-
13. Lontar	2	15	-	-	-
14. Warga-sara	1	1	-	-	-
Jumlah/ Total	33	107	-	-	-

Sumber/ Source: KUA Kecamatan Tirtayasa / Office of Religious Affairs of Tirtayasa District

Tabel 6.6 Jumlah Tempat Peribadatan di Kecamatan Tirtayasa , 2016
Table Number of Worship Facilities in Tirtayasa District, 2016

Desa/Kelurahan Village/Subdistrict	2014	2015	2016
(1)	(2)	(3)	(4)
1. Tengkurak	53	34	38
2. Tirtayasa	52	61	34
3. Laban	45	22	34
4. Puser	41	38	31
5. Samparwadi	79	50	36
6. Sujung	66	68	51
7. Kebon	39	38	85
8. Kebuyutan	30	28	36
9. Kemanisan	46	51	38
10. Pontang Legon	48	34	34
11. Susukan	69	60	50
12. Alang-alang	48	46	34
13. Lontar	110	105	79
14. Wargasara	33	14	12
Jumlah/ Total	759	649	592

Sumber/ Source: KUA Kecamatan Tirtayasa / Office of Religious Affairs of Tirtayasa District

Tabel 6.7 Jumlah Pernikahan, Talak/Cerai dan Rujuk Menurut Desa/Kelurahan di Kecamatan Tirtayasa , 2016
Number of Marriages, Separations/Divorces and Reconciliations by Village/Subdistrict in Tirtayasa District, 2016

Desa/Kelurahan Village/Subdistrict	Nikah Marriage	Talak Separation	Cerai Divorce	Rujuk Reconciliation
(1)	(2)	(3)	(4)	(5)
1. Tengkurak	38	-	-	-
2. Tirtayasa	34	-	-	-
3. Laban	34	-	-	-
4. Puser	31	-	-	-
5. Samparwadi	36	-	-	-
6. Sujung	51	-	-	-
7. Kebon	85	-	-	-
8. Kebuyutan	36	-	-	-
9. Kemanisan	38	-	-	-
10. Pontang Legon	34	-	-	-
11. Susukan	50	-	-	-
12. Alang-alang	34	-	-	-
13. Lontar	79	-	-	-
14. Wargasara	12	-	-	-
Jumlah/ Total	592	-	-	-

Sumber/ Source: KUA Kecamatan Tirtayasa / Office of Religious Affairs of Tirtayasa District

OTHER SOCIAL AFFAIRS

Tabel 6.8 **Gangguan Keamanan dan Ketertiban Masyarakat (KAMTIBMAS) di Kecamatan Tirtayasa, 2016**
Disturbance of Peace and Public Order in Society in Tirtayasa District, 2015

Jenis Kejadian	2015	2016
(1)	(2)	(3)
Pembunuhan / <i>Murder</i>	-	-
Penganiayaan Berat / <i>Aggravated Assault</i>	-	-
Pencurian Dengan Kekerasan / <i>Burglary with Violence</i>	-	-
Perampokan / <i>Robbery</i>	-	-
Pencurian Kendaraan Roda 2 / <i>Motorcycle Thievery</i>	-	-
Pencurian Kendaraan Roda 4 / <i>Cars Thievery</i>	-	-
Pencurian Biasa / <i>Thievery</i>	-	-
Pemerasan / <i>Black Mailing</i>	-	-
Perjudian / <i>Gambling</i>	-	-
Penculikan / <i>Kidnapping</i>	-	-
Penipuan / <i>Fraudulence</i>	-	-
Pemeriksaan / <i>Rape</i>	-	-
Korupsi / <i>Corruption</i>	-	-
Kebakaran / <i>Fire</i>	-	-
Serobot Tanah / <i>Land Invasion</i>	-	-
Perzinahan / <i>Adultery</i>	-	-
Perbuatan Cabul / <i>Debauchery</i>	-	-
Penghinaan / <i>Humiliation</i>	-	-
Perdagangan Orang / <i>Human Trafficking</i>	-	-
Kekerasan Dalam Rumah Tangga / <i>Domestic Violence</i>	-	-
Aniaya ringan / <i>Assault</i>	-	-
Lain-lain / <i>Others</i>	-	-
Narotika / <i>Drugs</i>	-	-

Sumber/ Source: Kepolisian Sektor (Polsek) Kecamatan Tirtayasa / *Police of Tirtayasa District*

Tabel 6.9 Jumlah Permasalahan Sosial Menurut Jenis di Kecamatan Tirtayasa , 2016
Table *Number of Social Problems in Tirtayasa District, 2016*

Jenis PMKS Social Problem	2015	2016
(1)	(2)	(3)
Anak Terlantar / <i>Neglected Children</i>	-	-
Anak Nakal / <i>Scapegrace</i>	-	-
Lansia/Jompo / <i>Elderly</i>	-	-
Korban Narkotika / <i>Drug Abuser</i>	-	-
Penyandang Cacat / <i>People with Disability</i>	-	-
Gelandangan dan Pengemis / <i>Beggar</i>	-	-
Wanita Pekerja Sex Komersial / <i>Commercial Sex Worker</i>	-	-
Fakir Miskin/Keluarga Miskin / <i>Poor</i>	-	-
Anak Jalanan / <i>Street Children</i>	-	-
Wanita Rawan Sosioal Ekonomi	-	-
Anak Balita Terlantar / <i>Neglected Toddler</i>	-	-
Anak Korban Kekerasan / <i>Children Victims of Violence</i>	-	-
Wanita Korban Tindak Kekerasan / <i>Women Victims of Violence</i>	-	-
Lansia Korban Tindak Kekerasan <i>Elder Victims of Violence</i>	-	-
Eksnarapidana / <i>Ex-Convict</i>	-	-
Kelurga Berumah Tidak Layak Huni / <i>Families with Uninhabitable House</i>	-	-
	-	-

Sumber/ Source: Dinas Sosial Kabupaten Serang / *Social Services of Serang Regency*

Tabel 6.10 Banyaknya Fasilitas Olahraga Menurut Desa/Kelurahan di Kecamatan Tirtayasa , 2016
Table Number of Sport Facilities in Tirtayasa District, 2016

Desa/Kelurahan Village/Subdistrict	Sepak Bola Soccer	Bola Voli Volley Ball	Bulu Tangkis Badminton	Tenis Meja Table Tennis	Lap. Tennis Tennis	Lap. Futsal Futsal
(1)	(2)	(3)	(4)	(5)	(6)	(7)
1. Tengkurak	1	-	-	1	-	-
2. Tirtayasa	1	1	-	4	-	-
3. Laban	1	-	-	1	-	-
4. Puser	-	-	-	1	-	-
5. Samparwadi	-	-	-	1	-	-
6. Sujung	-	2	-	1	-	-
7. Kebon	-	-	-	1	-	-
8. Kebuyutan	-	-	-	1	-	-
9. Kemanisan	-	-	-	1	-	-
10. Pontang Legon	-	-	-	1	-	-
11. Susukan	-	-	-	1	-	-
12. Alang-alang	-	-	-	1	-	-
13. Lontar	1	-	-	1	-	-
14. Wargasara	-	1	-	1	-	-
Jumlah/ Total	4	4	-	17	-	-

Sumber/ Source: Kantor Desa Se Kecamatan Tirtayasa /Village Offices in Tirtayasa District

7

PERTANIAN
AGRICULTURE

<http://serangkab.bps.go.id>

Tabel 7.1 Luas Lahan Sawah dan Pertanian Bukan Sawah di Kecamatan Tirtayasa , 2016
Area of Wetland and Dryland Field in Tirtayasa District, 2016

Jenis Lahan <i>Land</i>		Luas Lahan (Ha) <i>Total Area (Ha)</i>	Persentase (%) <i>Percentage (%)</i>
(1)		(2)	(3)
1.	Lahan Sawah / <i>Wetland</i>	2854	
a.	Irigasi Teknis / <i>Wetland with Technical Irrigation</i>	2760	50,51
b.	Irigasi Setengah Teknia / <i>Wetland with Semi Technical Irrigation</i>	-	-
c.	Irigasi Sederhana / <i>Wetland with Simple Irrigation</i>	-	-
d.	Irigasi Desa / <i>Wetland with Village Irrigation</i>	-	-
e.	Tadah Hujan / <i>Rainfed Wetland</i>	94	1,72
f.	Pasang surut, Polder, Rembesan dan Rawa / <i>Tides, Polder, Seepage and Swamp</i>	-	-
g.	Sementara Tidak Diusahakan / <i>Temporarily Unused</i>	-	-
2.	Lahan Pertanian Bukan Sawah / <i>Dryland Field</i>	2610	
a.	Ladang, huma, tegal, dan, kebun / <i>Dryland Paddy Fields</i>	-	-
b.	Perkebunan / <i>Farms</i>	-	-
c.	Perkarangan, lahan bangunan dan halaman / <i>Gardens, Buildings, Yards</i>	532	9,74
d.	Hutan Rakyat / <i>Forest</i>	-	-
e.	Rawa, Tambak, Kolom, empang / <i>Swamps, Ponds</i>	2078	38,03
f.	Lainnya / <i>Others</i>	-	-
g.	Lahan tidur / <i>Uncultivated Land</i>	-	-
Jumlah/ <i>Total</i>		5464	100 %

Sumber/ *Source*: KCD Pertanian Kecamatan Tirtayasa / *Agriculture Unit in Tirtayasa District*

Tabel 7.2 Luas Panen dan Produksi Tanaman Padi dan Palawija di Kecamatan Tirtayasa , 2016
Harvested Area and Production of Rice and Coarse Grains, Pulses, Roots and Tuber (CGPRT) Crops in Tirtayasa District, 2016

Jenis Tanaman Crops		Luas Panen (Ha) Harvested Area (Ha)	Produksi (Ton) Production (Ton)	Produktivitas (Ton/Ha) Productivity (Ton/Ha)
(1)	(2)	(3)	(4)	
1.	Padi	1130	4	4800
a.	Padi Sawah / <i>Wetland Rice</i>	-	-	-
b.	Padi Ladang / <i>Dryland Rice</i>	-	-	-
2.	Palawija	-	-	-
a.	Jagung / <i>Corn</i>	-	-	-
b.	Ketela pohon / <i>Cassava</i>	-	-	-
c.	Ketela Rambut / <i>Sweet Potato</i>	-	-	-
d.	Kacang Tanah / <i>Peanut</i>	-	-	-
e.	Kacang Hijau / <i>Mungbean</i>	-	-	-
f.	Kedelai / <i>Soy bean</i>	-	-	-

Sumber/ Source: KCD Pertanian Kecamatan Tirtayasa / Agriculture Unit in Tirtayasa District

Tabel 7.3 Luas Tanam dan Produksi Sayuran di Kecamatan Tirtayasa , 2016
Table Planted Area and Production of Vegetables in Tirtayasa District, 2016

Jenis Tanaman	Luas Tanaman (Ha) <i>Planted Area (Ha)</i>	Luas Panen (Ha) <i>Harvested Area (Ha)</i>	Produksi (Kw) <i>Production (Qu)</i>
(1)	(2)	(3)	
1. Bawang Merah / <i>Shallot</i>	-	-	-
2. Bawah Putih / <i>Garlic</i>	-	-	-
3. Dawun Bawang / <i>Scallion</i>	-	-	-
4. Petsai / Sawi / <i>Mustard Green</i>	1	1
5. Kacang Panjang / <i>Yardlong Bean</i>	1	1
6. Kacang Merah / <i>Kidney Bean</i>	-	-	-
7. Tomat / <i>Tomato</i>	-	-	-
8. Terung / <i>Eggplant</i>	-	-	-
9. Buncis / <i>Green Bean</i>	-	-	-
10. Ketimun / <i>Cucumber</i>	1	1
11. Kangkung / <i>Water Spinach</i>	1,5	1,5
12. Bayam / <i>Spinach</i>	-	-	-
13. Labu Siam / <i>Chayote</i>	-	-	-
14. Cabe Rawit / <i>Bird's Eye Chili</i>	1	1
15. Cabe Merah / <i>Chili</i>	1	1
16. Talas / <i>Taro</i>	-	-	-
17. Ganyong / <i>Canna</i>	-	-	-
18. Jamur / <i>Mushroom</i>	-	-	-

Sumber/ *Source*: KCD Pertanian Kecamatan Tirtayasa / *Agriculture Unit in Tirtayasa District*

Tabel 7.4 Luas Tanam dan Produksi Buah-buahan di Kecamatan Tirtayasa , 2016
Table **Planted Area and Production of Fruits in Tirtayasa District, 2016**

Jenis Tanaman <i>Fruit</i>	Jumlah Pohon / <i>Trees</i>		Produksi (Kw) <i>Production (Qu)</i>
	Seluruhnya <i>All Trees</i>	Menghasilkan <i>Productive Trees</i>	
(1)	(2)	(3)	(4)
1. Alpukat / <i>Avocado</i>	-	-	-
2. Belimbing / <i>Star Fruit</i>	23	13	-
3. Duku / <i>Langsat / Lanzone</i>	-	-	-
4. Durian / <i>Durian</i>	-	-	-
5. Jambu Biji / <i>Guava</i>	14	6	-
6. Jambu Air / <i>Water Apple</i>	162	60	-
7. Jeruk / <i>Orange</i>	-	-	-
8. Mangga / <i>Mango</i>	174	150	-
9. Manggis / <i>Mangosteen</i>	-	-	-
10. Nangka / <i>Jackfruit</i>	32	7	-
11. Nanas / <i>Pineapple</i>	-	-	-
12. Pepaya / <i>Papaya</i>	46	30	-
13. Pisang / <i>Banana</i>	-	-	-
14. Rambutan / <i>Rambutan</i>	-	-	-
15. Salak / <i>Snake Fruit</i>	-	-	-
16. Sawo / <i>Sapodilla</i>	16	10	-
17. Sirsak / <i>Soursop</i>	14	11	-
18. Sukun / <i>Breadfruit</i>	240	200	-
19. Melinjo / <i>Melinjo</i>	-	-	-
20. Petai / <i>Stink Bean</i>	-	-	-
21. Jengkol / <i>Dogfruit</i>	-	-	-
22. Melon / <i>Melon</i>	-	-	-

23. Semangka / Watermelon

Sumber/ Source: KCD Pertanian Kecamatan Tirtayasa / Agriculture Unit in Tirtayasa District

Tabel 7.5 Luas Panen dan Produksi Tanaman Obat-obatan di Kecamatan Tirtayasa, 2016
Table Harvested Area and Production of Medicinal Plants in Tirtayasa District, 2016

	Jenis Tanaman <i>Medicinal Plants</i>	Luas Panen (Ha) <i>Harvested Area (Ha)</i>	Produksi (Kw) <i>Production (Qu)</i>
	(1)	(2)	(4)
1.	Jahe / <i>Ginger</i>	-	-
2.	Kunyit / <i>Turmeric</i>	-	-
3.	Kencur / <i>Sand Ginger</i>	-	-
4.	Lempuyang / <i>Pinecone Ginger</i>	-	-
5.	Temu Kunci / <i>Fingerroot</i>	-	-
6.	Kapolaga / <i>Cardamom</i>	-	-
7.	Lengkuas / <i>Galangal</i>	-	-
8.	Sambiloto / <i>Green Chiretta</i>	-	-
9.	Temulawak / <i>Temulawak</i>	-	-
10.	Keji Beling / <i>Keji Beling</i>	-	-
11.	Lidah Buaya / <i>Aloe Vera</i>	2	-
12.	Mahkota Dewa / <i>Mahkota Dewa</i>	-	-
13.	Mengkudu / <i>Morinda</i>	-	-
14.	Dlinggo / <i>Acorus Calamus</i>	-	-

Sumber/ Source: KCD Pertanian Kecamatan Tirtayasa / Agriculture Unit in Tirtayasa District

Tabel 7.6 Luas Area dan Produksi Perkebunan Rakyat di Kecamatan Tirtayasa, 2016
Table *Planted Area and Production of Smallholder Plantation in Tirtayasa District, 2016*

Jenis Tanaman <i>Plant</i>	Luas Tanaman (Ha) <i>Planted Area (Ha)</i>	Produksi (Kw) <i>Production (Qu)</i>
(1)	(2)	(3)
1. Karet / <i>Rubber Tree</i>	-	-
2. Kopi / <i>Coffee</i>	-	-
3. Kelapa / <i>Coconut</i>	-	-
4. Cengkeh / <i>Clove</i>	-	-
5. Lada / <i>Pepper</i>	-	-
6. Kapuk / <i>Kapok</i>	-	-
7. Kakao / <i>Cocoa</i>	-	-
8. Panili / <i>Vanilla</i>	-	-
9. Pala / <i>Nutmeg</i>	-	-
10. Melinjo / <i>Melinjo</i>	-	-
11. Jambu Mede / <i>Cashew Tree</i>	-	-
12. Kemiri / <i>Candlenut</i>	-	-
13. Aren / <i>Sugar Palm</i>	-	-
14. Jarak Pagar / <i>Nettlespurge</i>	-	-

Sumber/ Source: KCD Pertanian Kecamatan Tirtayasa / *Agriculture Unit in Tirtayasa District*

Tabel 7.7 Populasi Ternak dan Unggas di Kecamatan Tirtayasa, 2016
Table Population of Livestock and Poultry in Tirtayasa District, 2016

Jenis Ternak Livestock	Populasi (Ekor) Population
(1)	(2)
Sapi Potong / Cow	53
Sapi Perah / Dairy Cow	-
Kerbau / Buffalo	274
Kuda / Horse	-
Kambing / Goat	4783
Domba / Sheep	10350
Ayam Ras Pedaging / Broiler Chicken	32000
Ayam Ras Petelur / Laying Hens	-
Ayam Buras / Chicken	1200
Itik / Duck	23000

Sumber/ Source: KCD Pertanian Kecamatan Tirtayasa / Agriculture Unit in Tirtayasa District

Tabel 7.8 Jumlah Kelompok Tani di Kecamatan Tirtayasa, 2016
Table Number of Farmers Group in Tirtayasa District, 2016

Desa/Kelurahan Village/Subdistrict	Jenis Kelompok Tani / Farmers Group				Jumlah Total
	Pemula Novice	Lanjutan Intermediate	Madya Advance	Utama Expert	
(1)	(2)	(4)	(5)	(6)	(7)
1. Tengkurak	1	-	1	-	2
2. Tirtayasa	5	-	2	1	8
3. Laban	1	-	3	1	5
4. Puser	-	2	2	-	4
5. Samparwadi	2	1	2	-	5
6. Sujung	7	-	2	7	16
7. Kebon	2	-	3	2	7
8. Kebuyutan	3	1	1	1	6
9. Kemanisan	2	2	2	2	8
10. Pontang Legon	1	2	2	4	9
11. Susukan	2	3	4	1	10
12. Alang-alang	1	-	1	-	2
13. Lontar	-	1	-	-	1
14. Warga-sara	-	2	-	-	2
Jumlah/ Total	27	14	25	19	85

Sumber/ Source: KCD Pertanian Kecamatan Tirtayasa / Agriculture Unit in Tirtayasa District

Tabel 7.9 Kelompok Tani dan Anggota di Kecamatan Tirtayasa, 2016
Table Farmers Group and Its Members in Tirtayasa District, 2016

Desa/Kelurahan Village/Subdistrict	Jumlah Kelompok Tani Farmers Group	Anggota Members
(1)	(2)	(3)
1. Tengkurak	1	25
2. Tirtayasa	8	205
3. Laban	4	100
4. Puser	4	102
5. Samparwadi	5	125
6. Sujung	16	400
7. Kebon	7	176
8. Kebuyutan	6	150
9. Kemanisan	6	152
10. Pontang Legon	9	175
11. Susukan	6	175
12. Alang-alang	5	125
13. Lontar	1	25
14. Wargasara	2	50
Jumlah/ Total	80	1985

Sumber/ Source: KCD Pertanian Kecamatan Tirtayasa / Agriculture Unit in Tirtayasa District

8

INDUSTRI DAN PENGGALIAN

INDUSTRY AND EXCAVATION

<http://serangkab.bps.go.id>

Tabel 8.1 Jumlah Perusahaan dan Tenaga Kerja Industri Kecil dan Rumah Tangga di Kecamatan Tirtayasa , 2016
Table *Number of Small/Household Manufacturing Establishment and Employees in Tirtayasa District, 2016*

Desa/Kelurahan Village/Subdistrict	Industri Kecil (Tenaga Kerja 5-19 orang) <i>Small Manufacturing Establishment (5-19 Employees)</i>		Industri Rumah Tangga (Tenaga Kerja 1-4 orang) <i>Household Manufacturing Establishment (1-4 Employees)</i>	
	Usaha/Prusahaan <i>Establishment</i>	Tanaga Kerja <i>Employee</i>	Usaha/Prusahaan <i>Establishment</i>	Tanaga Kerja <i>Employee</i>
(1)	(2)	(4)	(5)	(6)
1. Tengkurak	-	-	-	-
2. Tirtayasa	-	-	13	18
3. Laban	-	-	-	-
4. Puser	-	-	14	19
5. Samparwadi	-	-	15	18
6. Sujung	-	-	10	19
7. Kebon	-	-	-	-
8. Kebuyutan	-	-	10	17
9. Kemanisan	-	-	46	48
10. Pontang Legon	-	-	-	-
11. Susukan	-	-	2	3
12. Alang-alang	-	-	-	-
13. Lontar	-	-	4	8
14. Wargasara	-	-	9	17
Jumlah/ Total	-	-	123	167

Sumber/ Source: Kantor Desa Se Kecamatan Tirtayasa /Village Offices in Tirtayasa District

INDUSTRY AND EXCAVATION

Tabel 8.2 Jumlah Perusahaan dan Tenaga Kerja Industri Kecil dan Rumah Tannga Menurut Jenis Industri di Kecamatan Tirtayasa , 2016
Number of Small/Household Manufacturing Establishment and Employees by Kind of Manufacturing in Tirtayasa District, 2016

Jenis Industri <i>Manufacturing Industry</i>	Industri Kecil <i>Small Manufacturing Establishment</i>		Industri Rumah Tangga <i>Household Manufacturing Establishment</i>	
	Usaha/Prusahaan <i>Establishment</i>	Tanaga Kerja <i>Employee</i>	Usaha/Prusahaan <i>Establishment</i>	Tanaga Kerja <i>Employee</i>
(1)	(2)	(3)	(4)	(5)
1. Makanan, Minuman dan Rokok <i>Food, Beverage and Tobacco</i>	-	-	168	190
2. Tekstil, Pakaian jadi dan kulit <i>Textile, Clothing and Leather Goods</i>	7	12		
3. Kayu dan barang dari kayu, termasuk alat dari kayu <i>Woods and Wooden Goods, including Wooden Tools</i>	26	73	-	-
4. Kertas, barang dari kertas, percetakan dan penerbitan <i>Paper, Paper Goods, Printing and Publishing</i>	-	-	-	-
5. Kimia, barang dari kimia, minyak bumi, batu bara, karet dan barang dari pelastik <i>Chemical, Chemical Goods, Petroleum, Coal, Rubber and Plastic Goods</i>	-	-	-	-
6. Barang galian bukan logam kecuali minyak bumi <i>Nonmetallic Minerals except Petroleum</i>	-	-	-	-
7. Logam dasar / <i>Basic Metals</i>	-	-	-	-
8. Barang dari logam, mesin dan peralatan <i>Metal Goods, Machines and Tools</i>	-	-	-	-
9. Pengolahan lainnya <i>Other Manufacturing Industries</i>	-	-	-	-
Jumlah/Total	33	85	168	190

Sumber/ Source: Kantor Desa Se Kecamatan Tirtayasa /Village Offices in Tirtayasa District

Tabel 8.3 Jumlah Perusahaan dan Tenaga Kerja Industri Menengah dan Besar Menurut Jenis Industri di Kecamatan Tirtayasa , 2016
Number of Medium/Large Manufacturing Establishment and Employees by Kind of Manufacturing in Tirtayasa District, 2016

Jenis Industri <i>Manufacturing Industry</i>	Industri Menengah (Tenaga Kerja 20-99) <i>Medium Manufacturing Establishment (20-99 Employees)</i>		Industri Besar (Tenaga Kerja ≥100) <i>Large Manufacturing Establishment (≥100 Employees)</i>	
	Usaha/Prusahaan <i>Establishment</i>	Tanaga Kerja <i>Employee</i>	Usaha/Prusahaan <i>Establishment</i>	Tanaga Kerja <i>Employee</i>
(1)	(2)	(3)	(4)	(5)
1. Makanan, Minuman dan Rokok <i>Food, Beverage and Tobacco</i>	-	-	-	-
2. Tekstil, Pakaian jadi dan kulit <i>Textile, Clothing and Leather Goods</i>	-	-	-	-
3. Kayu dan barang dari kayu, termasuk alat dari kayu <i>Woods and Wooden Goods, including Wooden Tools</i>	-	-	-	-
4. Kertas, barang dari kertas, percetakan dan penerbitan <i>Paper, Paper Goods, Printing and Publishing</i>	-	-	-	-
5. Kimia, barang dari kimia, minyak bumi, batu bara , karet dan barang dari plastik <i>Chemical, Chemical Goods, Petroleum, Coal, Rubber and Plastic Goods</i>	-	-	-	-
6. Barang galian bukan logam kecuali minyak bumi <i>Nonmetallic Minerals except Petroleum</i>	-	-	-	-
7. Logam dasar / <i>Basic Metals</i>	-	-	-	-
8. Barang dari logam, mesin dan peralatan <i>Metal Goods, Machines and Tools</i>	-	-	-	-
9. Pengolahan lainnya <i>Other Manufacturing Industries</i>	-	-	-	-
Jumlah				

Sumber/ Source: Kantor Desa Se Kecamatan Tirtayasa /Village Offices in Tirtayasa District

Tabel 8.4 Jumlah Lokasi Usaha Penggalian, Perusahaan dan Tenaga Kerja di Kecamatan Tirtayasa , 2016
Table Number of Excavation Locations, Companies and Employees in Tirtayasa District, 2016

Desa/Kelurahan Village/Subdistrict	Jumlah Lokasi Excavation Location	Usaha/ Perusahaan Company	Tenaga Kerja Employee
(1)	(2)	(3)	(4)
1. Tengkurak	-	-	-
2. Tirtayasa	-	-	-
3. Laban	-	-	-
4. Puser	-	-	-
5. Samparwadi	-	-	-
6. Sujung	-	-	-
7. Kebon	-	-	-
8. Kebuyutan	-	-	-
9. Kemanisan	-	-	-
10. Pontang Legon	-	-	-
11. Susukan	-	-	-
12. Alang-alang	-	-	-
13. Lontar	-	-	-
14. Wargasara	-	-	-
Jumlah/ Total	-	-	-

Sumber/ Source: Kantor Desa Se Kecamatan Tirtayasa /Village Offices in Tirtayasa District

9

**PERDAGANGAN, HOTEL DAN
RESTORAN**
*TRADE, HOTEL AND
RESTAURANT*

<http://serangkab.bps.go.id>

Tabel 9.1 Jumlah Restoran dan Toko Kelontong di Kecamatan Tirtayasa , 2016
Table *Number of Restaurants and Stores in Tirtayasa D istrict, 2016*

Desa/Kelurahan <i>Village/Subdistrict</i>	Restoran/Rumah Makan <i>Restaurants</i>	Warung/ Kedai Makanan, Minuman <i>Small Shops</i>	Toko/ Warung Kelontong <i>Convenience Stores</i>
(1)	(2)	(3)	(4)
1. Tengkurak	-	5	16
2. Tirtayasa	-	37	58
3. Laban	-	16	42
4. Puser	-	4	14
5. Samparwadi	-	3	23
6. Sujung	-	-	57
7. Kebon	-	4	96
8. Kebuyutan	-	-	21
9. Kemanisan	-	-	18
10. Pontang Legon	-	-	52
11. Susukan	-	3	21
12. Alang-alang	-	-	36
13. Lontar	-	12	34
14. Wargasara	-	-	9
Jumlah/ Total	-	84	497

Sumber/ Source: Kantor Desa Se Kecamatan Tirtayasa /Village Offices in Tirtayasa District

Tabel 9.2 Jumlah Penginapan dan Hotel di Kecamatan Tirtayasa, 2016
Table Number of Accommodations and Hotels in Tirtayasa District, 2016

Desa/Kelurahan	Penginapan/ Hotel Melati	Hotel Bintang	Jumlah
(1)	(2)	(3)	(4)
1. Tengkurak	-	-	-
2. Tirtayasa	-	-	-
3. Laban	-	-	-
4. Puser	-	-	-
5. Samparwadi	-	-	-
6. Sujung	-	-	-
7. Kebon	-	-	-
8. Kebuyutan	-	-	-
9. Kemanisan	-	-	-
10. Pontang Legon	-	-	-
11. Susukan	-	-	-
12. Alang-alang	-	-	-
13. Lontar	-	-	-
14. Wargasara	-	-	-
Jumlah/ Total	-	-	-

Sumber/ Source: Kantor Desa Se Kecamatan Tirtayasa /Village Offices in Tirtayasa District

<http://serangkab.bps.go.id>

DATA

MENCERDASKAN BANGSA



**BADAN PUSAT STATISTIK
KABUPATEN SERANG**
STATISTICS OF SERANG REGENCY

Jl. Desa Kaserangan - Pengampelan No.7 Ciruas, Kabupaten Serang 42182
Telp. / Fax (0254) 282902 email: bps3604@bps.go.id