

# Kecamatan GUNUNGHALU DALAM ANGKA

*Gununghalu Subdistrict in Figures*

# 2019



**BADAN PUSAT STATISTIK  
KABUPATEN BANDUNG BARAT**  
*Statistics of Bandung Barat Regency*

Kecamatan  
**GUNUNGHALU**  
**DALAM ANGKA**

*Gununghalu Subdistrict in Figures*

2019



**KECAMATAN GUNUNGHALU DALAM ANGKA**  
***Gununghalu Subdistrict In Figures***  
**2019**

**ISSN:** -

**No. Publikasi/ Publication Number :** 32170.1913

**Katalog/ Catalog:** 1102001.3217020

**Ukuran Buku/ Book Size:** 14,8 cm x 21 cm

**Jumlah Halaman/ Number of Pages:** xiv+54 halaman/ pages

**Naskah/ Manuscript:**

Badan Pusat Statistik Kabupaten Bandung Barat  
*BPS-Statistics of Bandung Barat Regency*

**Gambar Kover/ Cover Design:**

Seksi Inetgrasi Pengolahan dan Diseminasi Statistik  
*IntegratedProcessing and Statistics Dissemination Section*

**Ilustrasi Kover/ Cover Illustration:** <https://id.foursquare.com/v/perkebunan-teh-gununghalu/4c78fec997028cfa3979d9fe/photos>

**Diterbitkan oleh/ Published by:**

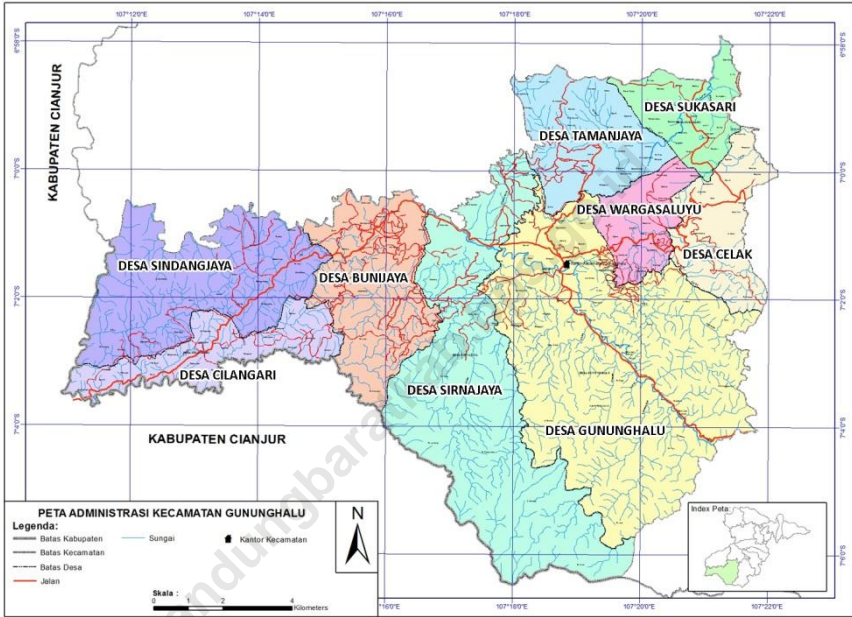
© **Badan Pusat Statistik Kabupaten Bandung Barat/ Statistics of Bandung Barat Regency**

**Dicetak oleh/ Printed by: CV. Nugraha**

Dilarang mengumumkan, mendistribusikan, mengomunikasikan, dan/atau menggandakan sebagian atau seluruh isi buku ini untuk tujuan komersial tanpa izin tertulis dari Badan Pusat Statistik .

*Prohibited to announce, distribute, communicate, and/or copy part or all of this book for commercial purpose without permission from BPS-Statistic Indonesia.*

**PETA KECAMATAN GUNUNGHALU**  
**MAP OF GUNUNGHALU SUBDISTRICT**





**KEPALA BPS KABUPATEN BANDUNG BARAT**  
**CHIEF STATISTICIAN OF BANDUNG BARAT REGENCY**



**IR. H. YAYAN EKA TAVIPIAN, MT.**









## KATA PENGANTAR

Kecamatan Gununghalu dalam Angka merupakan publikasi tahunan BPS Kabupaten Bandung Barat yang menyajikan beragam jenis data yang bersumber dari BPS maupun institusi lain. Publikasi ini memuat gambaran umum tentang keadaan geografi dan iklim, pemerintahan, perkembangan sosial-demografi dan perekonomian di Kecamatan Gununghalu.

Sejak diberlakukannya PP Nomor 7 Tahun 2016, publikasi-publikasi yang diterbitkan BPS Kabupaten Bandung Barat termasuk Kecamatan Gununghalu dalam Angka 2019 dapat diunduh secara langsung di *website* BPS Kabupaten Bandung Barat (<http://bandungbaratkab.bps.go.id>). Hal ini dimaksudkan untuk mempermudah akses terhadap data Kecamatan Gununghalu dalam Angka.

Publikasi ini dapat terwujud berkat kerja sama dan bantuan dari berbagai pihak. Kepada semua pihak yang telah membantu dalam upaya penerbitan publikasi ini, kami ucapkan banyak terima kasih. Semoga publikasi ini bermanfaat bagi para pengguna data dan masyarakat pada umumnya. Kami mengharapkan tanggapan dan saran dari para pengguna publikasi ini untuk perbaikan edisi yang akan datang.

Padalarang, September 2019  
**KEPALA BADAN PUSAT STATISTIK  
KABUPATEN BANDUNG BARAT**

**Ir. H. Yayan Eka Tavipian, MT.**



## PREFACE

*Gununghalu Subdistrict in Figures is an annual publication presenting various data from BPS-Statistics Gununghalu Subdistrict and other agencies. The publication provides general pictures of geographics conditions, government, and key socio-demographic and economic characteristics of Gununghalu Subdistrict. Technical notes for each statistics are also included in this publication to provide a better understanding in interpreting data for data users.*

*In line with the increasing demand of data users the contents of Gununghalu Subdistrict in Figures have been improved. To provide a better access to data covered in Gununghalu Subdistrict in Figures, a series of the publication can be downloaded in BPS-Statistics Gununghalu Subdistrict website ([www.bandungbaratkab.bps.go.id](http://www.bandungbaratkab.bps.go.id)).*

*The release of the publication has been made possible due to the assistance and contribution of various government institutions and private organizations. To all parties who have been involved in the preparation of this publication, I would like to express my high appreciation and gratitude. Hopefully this publication will be useful resource for any purposes. Comments and suggestions to improve the contents of the publication are always welcome.*

Padalarang, September 2019

**BPS-STATISTICS OF  
BANDUNG BARAT REGENCY**

**Ir. H. Yayan Eka Tavipian, MT.**

Chief Statistician

**DAFTAR ISI**  
**CONTENTS**

KATA PENGANTAR/*PREFACE* ..... viii

DAFTAR ISI / *CONTENTS* ..... ix

DAFTAR TABEL/ *LIST OF TABLES* ..... x

PENJELASAN UMUM / *EXPLANATORY NOTES* ..... xiii

1. GEOGRAFI DAN IKLIM / *GEOGRAPHY AND CLIMATE* ..... 3

2. SOSIAL DAN KESEJAHTERAAN RAKYAT / *SOCIAL AND WELFARE* ..... 7

3. PERTANIAN, KEHUTANAN, PETERNAKAN, DAN PERIKANAN/ *AGRICULTURE, FORESTY, LIVESTOCK, AND FISHERY* ..... 23

4. PARIWISATA / *TOURISM* ..... 51

**DAFTAR TABEL**  
**LIST OF TABLES**

Tabel 1.1.1 Luas Wilayah Menurut Desa, 2018/ Total Area by Village, 2018 .....	5
Tabel 2.1.1 Jumlah Desa yang Memiliki Fasilitas Sekolah Menurut Desa Dan tingkat Pendidikan, 2011, 2014 dan 2018 / <i>Number of Villages Having Educational Facilities by Villages and Educational Level, 2011, 2014 and 2018</i> .....	12
Tabel 2.2.1 Jumlah Desa yang Memiliki Sarana Kesehatan Menurut Desa 2011, 2014, dan 2018 .....	15
Tabel 2.2.2 Jumlah Tenaga Kesehatan Menurut Desa, 2018/ <i>Number of Medical Personnel by Villages, 2018</i> .....	18
Tabel 2.2.3 Jumlah Rumah Sakit Umum. Rumah Sakit Khusus. dan Puskesmas Menurut Desa, 2017-201/ <i>Number of General hospital. Special Hospital. and Public Health Center by Villages, 2017-2018</i> .....	19
Tabel 2.3.1 Jumlah Penduduk Menurut Desa dan Agama yang Dianut, 2018/ Population by Sub District and Religion, 2018 .....	21
Tabel 2.3.2 Jumlah Tempat Peribadatan Menurut Desa, 2018/ <i>Number of Places of Worship by Villages and Religion, 2018</i> .....	22
Tabel 3.1.1 Luas Panen Tanaman Sayuran Menurut Desa dan Jenis Tanaman (ha), 2017-2018/ <i>Harvested Area of Vegetables by Village and Kind of Plant (ha), 2017-2018</i> .....	26
Tabel 3.1.2 Produksi Tanaman Sayuran Menurut Desa dan Jenis Tanaman (ton), 2017-2018 / <i>Production of Vegetables by Sub District and Kind of Plant (ton), 2017-2018</i> .....	28
Tabel 3.1.3 Luas Panen Tanaman Sayuran dan Buah-Buahan Semusim Menurut Jenis Tanaman (ha), 2015-2018 / <i>Harvested Area of Seasonal Vegetables and Fruits by Kind of Plant (ha), 2015-2018</i> .....	30
Tabel 3.1.4 Produksi Tanaman Sayuran dan Buah-Buahan Semusim Menurut Jenis Tanaman (ton), 2015-2018 / <i>Production of Seasonal Vegetables and Fruits by Kind of Plant (ton), 2015-2018</i> .....	31
Tabel 3.1.5 Luas Panen Tanaman Biofarmaka Menurut Desa dan Jenis <u>tanaman (m<sup>2</sup>)</u> , 2017 dan 2018/ <i>Harvested Area of Medical Plants by Villages and Kind of Plant (m<sup>2</sup>), 2017-2018</i> .....	32

<i>Tabel 3.1.6 Produksi Tanaman Biofarmaka Menurut Desa dan Jenis tanaman (kg), 2017 dan 2018 / Production of Medical Plants by Villages and Kind of Plant (kg), 2017-2018.....</i>	<i>34</i>
<i>Tabel 3.1.7 Luas Panen Tanaman Biofarmaka Menurut Jenis tanaman (m<sup>2</sup>), 2015-2018/ Harvested Area of Medical Plants by Kind of Plant (m<sup>2</sup>), 2015-2018 .....</i>	<i>36</i>
<i>Tabel 3.1.8 Produksi Tanaman Biofarmaka Jenis tanaman (kg), 2015-2018/ Production of Medical Plants by Kind of Plant (kg), 2015-2018 .....</i>	<i>37</i>
<i>Tabel 3.1.9 Luas Panen Tanaman Hias Menurut Desa dan Jenis Tanaman (m<sup>2</sup>), 2017-2018/ Harvested Area of Ornamental Palnts by Villages and Kind of Plant (m<sup>2</sup>), 2017-2018 .....</i>	<i>38</i>
<i>Tabel 3.1.10 Produksi Tanaman Hias Menurut Desa dan Jenis Tanaman tangkai), 2017-2018/ Production of Ornamental Palnts by Villages and Kind of Plant (stalks), 2017-2018 .....</i>	<i>40</i>
<i>Tabel 3.1.11 Luas Panen Tanaman Hias Menurut Jenis tanaman (m<sup>2</sup>), 2015-2018 / Harvested Area of Ornamental Plants by Kind of Plant (m<sup>2</sup>), 2015-2018.....</i>	<i>42</i>
<i>Tabel 3.1.12 Produksi Tanaman Hias Menurut Jenis tanaman (tangkai), 2015-2018 / Production of Ornamental Plants by Kind of Plant (stalks), 2015-2018 .....</i>	<i>43</i>
<i>Tabel 3.1.13 Produksi Buah-Buahan Menurut Desa dan Jenis Tanaman (Ton), 2017-2018/Production of Fruits by Villages and Kind of Plant (Ton), 2017-2018 ....</i>	<i>44</i>
<i>Tabel 3.1.14 Produksi Buah-Buahan dan Sayuran Tahunan Menurut Jenis Tanaman (Ton), 2015-2018 / Production of Annual Fruits and Vegetables by Kind of Plant (Ton), 2015-2018 .....</i>	<i>46</i>
<i>Tabel 3.2.1 Luas Areal Perkebunan Menurut Desa dan Jenis Tanaman (ha), 2017-2018 Planted Area of Estate Crops by Village and Type of Crops (ha), 2017-2018..</i>	<i>47</i>
<i>Tabel 3.2.2 Produksi Perkebunan Menurut Desa dan Jenis Tanaman (ton), 2017-2018 / Production of Estate Crops by Villages and Type of Crops (ton), 2017-2018 ..</i>	<i>49</i>
<i>Tabel 4.1.1 Jumlah Rumah Makan/ Restoran Menurut Desa, 2015-2018.....</i>	<i>54</i>

**DAFTAR GAMBAR**  
**LIST OF FIGURES**

Gambar 1.1 Persentase Luas Wilayah Menurut Desa , 2018 / *Percentage of Area by Village, 2018* ..... 4

<https://bandungbaratkab.bps.go.id>

## PENJELASAN UMUM EXPLANATORY NOTES

Tanda-tanda, satuan-satuan dan lain-lainnya yang digunakan dalam publikasi ini adalah sebagai berikut:

*Symbols, measurement units and acronyms which are used in this publication, are as follows:*

### **Tanda-Tanda/ Symbols**

Data belum tersedia/ <i>Data not available</i>	: ...
Tidak ada atau nol/ <i>Null or Zero</i>	: —
Data dapat diabaikan/ <i>Data negligible</i>	: 0
Angka sementara/ <i>Preliminary figure</i>	: *
Angka Sangat Sementara	: **
Angka Revisi/ <i>Revision Figure</i>	: r
Angka Perkiraan/ <i>Estimated Figure</i>	: e

### **Satuan/ Units**

hektar (ha)/ <i>hectare (ha)</i>	: 10.000 m <sup>2</sup>
kilometer (km)/ <i>kilometres (km)</i>	: 1.000 meter
liter/ <i>litre</i>	: 0,80 kg
ton/ <i>ton</i>	: 1.000 kg
kuintal/ <i>quintal</i>	: 100 kg

Satuan lain: buah, ekor, jam, menit, persen (%).

*Other units : unit, heads, hour, minute, percent (%).*

Perbedaan angka di belakang koma disebabkan oleh pembulatan angka.

*The difference in decimal numbers is caused by rounding.*

<https://bandungbaratkab.bps.go.id>



**1. GEOGRAFI DAN IKLIM**  
***GEOGRAPHY AND CLIMATE***



**ULASAN****DESCRIPTION**

Kecamatan Gununghalu terdiri dari 9 Desa, yaitu:

- Desa Cilangari
- Desa Sindangjaya
- Desa Bunijaya
- Desa Sirnajaya
- Desa Gununghalu
- Desa Celak
- Desa Wargaaluyu
- Desa Sukasari
- Desa Tamanjaya

*Gununghalu Subdistrict has 9 Villages they are:*

- Cilangari Village
- Sindangjaya Village
- Bunijaya Village
- Sirnajaya Village
- Gununghalu Village
- Celak Village
- Wargaaluyu Village
- Sukasari Village
- Tamanjaya Village

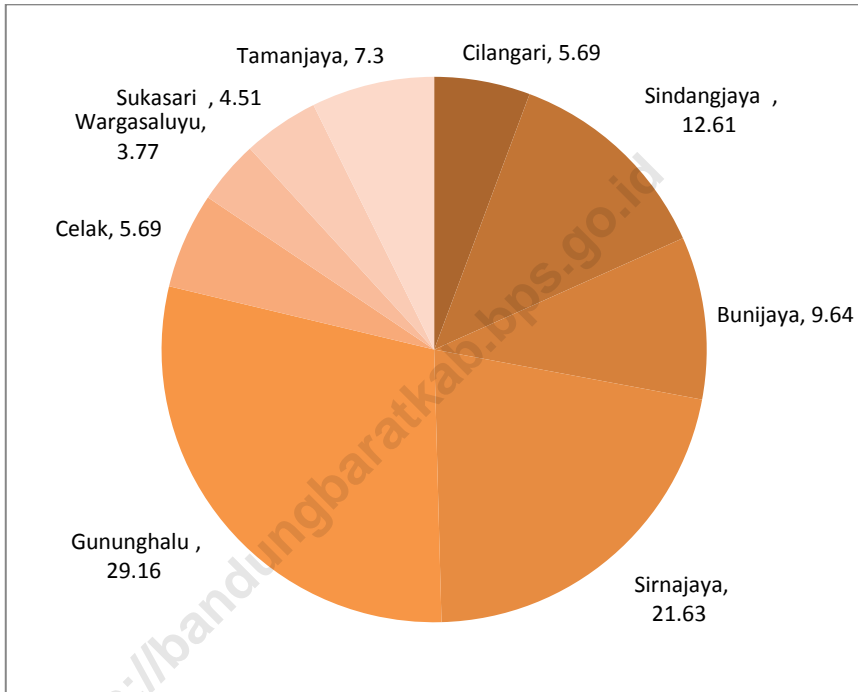
Luas Kecamatan Gununghalu secara keseluruhan adalah **160.64** km<sup>2</sup>

*The area of Gununghalu Subdistrict, at whole, is **160.64** km<sup>2</sup>.*

- Desa terluas di Kecamatan Gununghalu adalah Desa Gununghalu dan Desa yang memiliki luas terkecil adalah Desa Wargaaluyu

*The Villages with the largest area is Gununghalu Villages and the smallest one is Wargaaluyu Village.*

**Gambar 1.1**    **Persentase Luas Wilayah Menurut Desa , 2018**  
**Figure**        **Percentage of Area by Village, 2018**



Sumber : BPS Kabupaten Bandung Barat  
Source : Statistics of Bandung Barat Regency

1.1 GEOGRAFI/ *GEOGRAPHY*

**Tabel 1.1.1 Luas Wilayah Menurut Desa, 2018**  
**Table Total Area by Village, 2018**

<b>Desa Village</b>	<b>Luas (km<sup>2</sup>) Total Area (square.km)</b>	<b>Persentase terhadap luas Kecamatan Percentage to Subdistrict's Area</b>
(1)	(2)	(3)
Cilangari	9.14	5.69
Sindangjaya	20.25	12.61
Bunijaya	15.48	9.64
Sirnajaya	34.74	21.63
Gununghalu	46.85	29.16
Celak	9.14	5.69
Wargasaluyu	6.06	3.77
Sukasari	7.24	4.51
Tamanjaya	11.73	7.30
<b>Kecamatan Gununghalu</b>	<b>160.64</b>	<b>100</b>

Sumber : Kementerian Dalam Negeri  
 Source : Ministry of Home Affairs

<https://bandungbaratkab.bps.go.id>

**2. SOSIAL DAN KESEJAHTERAAN RAKYAT**  
***SOCIAL AND WELFARE***

<https://bandungbandungbarat.go.id>





**PENJELASAN TEKNIS**

1. **Jenjang Pendidikan Formal** terdiri atas pendidikan dasar, pendidikan menengah, dan pendidikan tinggi. Jenis pendidikan yang diajarkan mencakup pendidikan umum, kejuruan, akademik, profesi, vokasi, keagamaan, dan khusus.
  - a. Pendidikan Dasar berbentuk Sekolah Dasar (SD) dan Madrasah Ibtidaiyah (MI) atau bentuk lain yang sederajat serta Sekolah Menengah Pertama (SMP) dan Madrasah Tsanawiyah (MTs), atau bentuk lain yang sederajat.
  - b. Pendidikan Menengah berbentuk Sekolah Menengah Atas (SMA), Madrasah Aliyah (MA), Sekolah Menengah Kejuruan (SMK), dan Madrasah Aliyah Kejuruan (MAK), atau bentuk lain yang sederajat.
  - c. Pendidikan Tinggi merupakan jenjang pendidikan setelah pendidikan menengah yang mencakup program pendidikan diploma, sarjana, magister, spesialis, dan doktor yang diselenggarakan oleh perguruan tinggi. Perguruan tinggi dapat berbentuk akademi, politeknik, sekolah tinggi, institut, atau universitas.

**TECHNICAL NOTES**

1. *The Formal Education Level consists of primary education, secondary education, and high education. The kind of education that taught consists of general education, vocational, academic, professional, religious, and specific education.*
  - a. *The Primary Education consists of Elementary School and Islamic Elementary School or other equivalent forms and Junior High School and MTs, or other equivalent forms.*
  - b. *The Secondary Education consists of the senior high school, MA, Vocational School, and Vocational Madrasah Aliyah, or other equivalent.*
  - c. *The High Education consists of the education level after the secondary education that consists of diplomas, bachelor, master, specialist, and doctoral degrees that are held by the college. The colleges can be academy, polytechnic, high school, institute, or university.*

- 2. Rumah Sakit** adalah tempat pemeriksaan dan perawatan kesehatan. biasanya berada di bawah pengawasan kesehatan. biasanya berada di bawah pengawasan dokter/tenaga medis. yang melayani penderitaan yang sakit untuk berobat rawat jalan atau rawat inap.
- 2. Hospital** is a place for health check. usually controlled/supervised by doctors/medical personnel to serve the ill patients to get outpatient or inpatient treatment services.
- 3. Rumah Sakit Bersalin** adalah sarana pelayanan kesehatan dengan izin sebagai rumah bersalin. dilengkapi pelayanan pemeriksaan kehamilan. persalinan serta pemeriksaan ibu dan anak yang berada di bawah pengawasan bidan senior.
- 3. Maternity Hospital** is a specialized hospital for childbirth. has specialist inspection service to pregnancy. childbirth. hospitalization and outpatient for mothers and children that is under the supervision of an obstetrician.
- 4. Puskesmas(Pusat Kesehatan Masyarakat)** adalah unit pelaksana teknis dinas kesehatan kabupaten/kota yang mempunyai fungsi utama sebagai penyelenggara pelayanan kesehatan tingkat pertama. Wilayah kerja puskesmas maksimal adalah satu kecamatan dan untuk dapat menjangkau wilayah kerjanya. puskesmas mempunyai jaringan pelayanan yang meliputi unit Puskesmas Pembantu (Pustu). unit Puskesmas Keliling (Puskel). dan unit bidan desa/komunitas (Peraturan Menteri Kesehatan RI No. 75 Tahun 2015 Tentang Pusat Kesehatan Masyarakat).
- 4. Public Health Center** is technical implementation unit of regency health department that have the primary function as a first-level health care providers. The working area standard of public health center is one Subdistrict and to reach their working areas. public health centers have a service network covering subsidiary of public health center. mobile public health center units. and midwife units (Regulation of the Minister of Health of Indonesia Number 75 Year 2015 about Public Health Center).

**5. Posyandu (Pos Pelayanan Terpadu)** merupakan salah satu bentuk Upaya Kesehatan Bersumber Daya Masyarakat (UKBDM) yang dikelola dan diselenggarakan dari, oleh, untuk, dan bersama masyarakat dalam penyelenggaraan pembangunan kesehatan, guna memberdayakan masyarakat dan memberikan kemudahan kepada masyarakat dalam memperoleh pelayanan kesehatan dasar, utamanya untuk mempercepat penurunan angka kematian ibu dan bayi (Pedoman Umum Pengelolaan Posyandu oleh Kementerian Kesehatan RI bekerja sama dengan Kelompok Kerja Operasional).

**5. *Integrated Services Post*** is one form of Health Efforts Human Sourced managed and organized from, by, for, and with the community in the implementation of health development, in order to empower people and provide convenience to the public in obtaining basic health services, primarily to accelerate the reduction in maternal and infant mortality (General Guidelines for Management of IHC by The Ministry of Health in collaboration with the Operations Working Group).

Ulasan

Description

1. Sektor pendidikan cukup berkembang di Kecamatan Gununghalu. Selain sekolah umum, sekolah kejuruanpun mulai berkembang di Kecamatan Gununghalu.

1. *The education sector is quite developed in Gununghalu District. In addition to public schools, vocational schools began to develop in Gununghalu District.*

## 2.1 PENDIDIKAN/ EDUCATION

**Tabel 2.1.1** Jumlah Desa yang Memiliki Fasilitas Sekolah Menurut Desa Dan tingkat Pendidikan, 2011, 2014 dan 2018  
**Table** *Number of Villages Having Educational Facilities by Villages and Educational Level, 2011, 2014 and 2018*

Desa Village	SD Primary Schools			SMP Junior High School		
	2011	2014	2018	2011	2014	2018
(1)	(2)	(3)	(4)	(5)	(6)	(7)
Cilangari	...	...	9	...	...	2
Sindangjaya	...	...	3	...	...	0
Bunijaya	...	...	5	...	...	4
Sirnajaya	...	...	9	...	...	4
Gununghalu	...	...	8	...	...	2
Celak	...	...	10	...	...	4
Wargasaluyu	...	...	5	...	...	3
Sukasari	...	...	5	...	...	1
Tamanjaya	...	...	6	...	...	3
<b>Kecamatan Gununghalu</b> <i>Gununghalu Subdistrict</i>	...	...	<b>60</b>	...	...	<b>23</b>

Lanjutan Tabel / *Continued Table 2.1.1*

Desa <i>Village</i>	SMA <i>Senior High School</i>			SMK <i>Vocational School</i>		
	2011 (8)	2014 (9)	2018 (10)	2011 (11)	2014 (12)	2018 (13)
Cilangari	...	...	1	...	...	0
Sindangjaya	...	...	0	...	...	0
Bunijaya	...	...	3	...	...	2
Sirnajaya	...	...	1	...	...	1
Gununghalu	...	...	1	...	...	3
Celak	...	...	1	...	...	2
Wargasaluyu	...	...	1	...	...	0
Sukasari	...	...	1	...	...	0
Tamanjaya	...	...	2	...	...	0
			1			0
<b>Kecamatan Gununghalu</b>						
<i>Gununghalu Subdistrict</i>	...	...	<b>11</b>	...	...	<b>8</b>

Lanjutan Tabel /Continued Table 2.1.1

Desa Village	Perguruan Tinggi University		
	2011 (14)	2014 (15)	2018 (16)
(1)			
Cilangari	-	-	-
Sindangjaya	-	-	-
Bunijaya	-	-	-
Sirnajaya	-	-	-
Gununghalu	-	-	-
Celak	-	-	-
Wargasaluyu	-	-	-
Sukasari	-	-	-
Tamanjaya	-	-	-
<b>Kecamatan Gununghalu</b> <i>Gununghalu Subdistrict</i>	-	-	-

Sumber : BPS, Pendataan Potensi Desa (Podes)

Source : BPS-Statistics Indonesia. Village Potential Data Collecting

## 2.2 KESEHATAN/ HEALTH

**Tabel** 2.2.1 Jumlah Desa yang Memiliki Sarana Kesehatan Menurut Desa 2011, 2014, dan 2018  
**Table** Number of Villages Having Health Facilities by Villages, 2011, 2014 and 2018

Desa Village	Rumah Sakit Hospital			Rumah Sakit Bersalin Maternity Hospital		
	2011	2014	2018	2011	2014	2018
(1)	(2)	(3)	(4)	(5)	(6)	(7)
Cilangari	-	-	-	-	-	-
Sindangjaya	-	-	-	-	-	-
Bunijaya	-	-	-	-	-	-
Sirnajaya	-	-	-	-	-	-
Gununghalu	-	-	-	-	-	-
Celak	-	-	-	-	-	-
Wargasaluyu	-	-	-	-	-	-
Sukasari	-	-	-	-	-	-
Tamanjaya	-	-	-	-	-	-
<b>Kecamatan Gununghalu</b> Gununghalu Subdistrict	-	-	-	-	-	-

Lanjutan Tabel / *Continued Table 2.2.1*

Desa <i>Village</i>	Poliklinik <i>Polyclinic</i>			Puskesmas <i>Public Health Center</i>		
	2011	2014	2018	2011	2014	2018
(1)	(8)	(9)	(10)	(11)	(12)	(13)
Cilangari	...	...	-	-	-	-
Sindangjaya	...	...	-	-	-	-
Bunijaya	...	...	1	-	-	-
Sirnajaya	...	...	2	1	1	1
Gununghalu	...	...	-	-	-	-
Celak	...	...	-	-	-	-
Wargasaluyu	...	...	-	-	-	-
Sukasari	...	...	-	-	-	-
Tamanjaya	...	...	-	-	-	-
<b>Kecamatan Gununghalu</b>	...	...	3	1	1	1
<i>Gununghalu Subdistrict</i>						



Lanjutan Tabel / *Continued Table 2.2.1*

Desa Village	Puskesmas Pembantu <i>Subsidiary of Public Health Center</i>			Apotek <i>Pharmacy</i>		
	2011	2014	2018	2011	2014	2018
(1)	(14)	(15)	(16)	(17)	(18)	(19)
Cilangari	1	1	1	...	...	...
Sindangjaya	-	-	-	...	...	...
Bunijaya	1	1	1	...	...	1
Sirnajaya	-	-	-	...	...	1
Gununghalu	-	-	-	...	...	...
Celak	1	1	1	...	...	...
Wargasaluyu	1	1	1	...	...	...
Sukasari	-	1	1	...	...	...
Tamanjaya	1	1	1	...	...	...
<b>Kecamatan Gununghalu</b>	5	6	6	...	...	2
<i>Gununghalu Subdistrict</i>						

Sumber : BPS, Pendataan Potensi Desa (Podes)

Source : BPS-Statistics Indonesia, Village Potential Data Collecting

**Tabel 2.2.2 Jumlah Tenaga Kesehatan Menurut Desa, 2018**  
**Table Number of Medical Personnel by Villages, 2018**

Desa Village	Dokter Doctors	Perawat Nurse	Bidan Midwives	Farmasi Pharmaceutical	Ahli Gizi Nutritionist
(1)	(2)	(3)	(4)	(5)	(6)
Cilangari	...	...	3	...	...
Sindangjaya	...	...	1	...	...
Bunijaya	...	...	3	...	...
Sirnajaya	...	...	4	...	...
Gununghalu	...	...	4	...	...
Celak	...	...	4	...	...
Wargasaluyu	...	...	2	...	...
Sukasari	...	...	4	...	...
Tamanjaya	...	...	2	...	...
<b>Kecamatan Gununghalu Gununghalu Subdistrict</b>	...	...	<b>27</b>	...	...

Sumber : Kementerian Kesehatan, <http://sisdmk.bppsdmk.go.id>  
 Source : Ministry of Health, <http://sisdmk.bppsdmk.go.id>

**Tabel 2.2.3** Jumlah Rumah Sakit Umum. Rumah Sakit Khusus. dan Puskesmas Menurut Desa, 2017-2018  
*Number of General hospital. Special Hospital. and Public Health Center by Villages, 2017-2018*

Desa Village	Rumah Sakit Umum General Hospital		Rumah Sakit Khusus Special Hospital		Rumah Sakit Bersalin/Rumah Bersalin Maternity Hospital		Puskesmas Public Health Center	
	2017	2018	2017	2018	2017	2018	2017	2018
	(1)	(2)	(3)	(4)	(5)	(6)	(7)	(8)
Cilangari	-	-	-	-	...	...	-	-
Sindangjaya	-	-	-	-	...	...	-	-
Bunijaya	-	-	-	-	...	...	-	-
Sirnajaya	-	-	-	-	...	...	1	1
Gununghalu	-	-	-	-	...	...	-	-
Celak	-	-	-	-	...	...	-	-
Wargasaluyu	-	-	-	-	...	...	-	-
Sukasari	-	-	-	-	...	...	-	-
Tamanjaya	-	-	-	-	...	...	-	-
<b>Kecamatan Gununghalu Gununghalu Subdistrict</b>	-	-	-	-	...	...	<b>1</b>	<b>1</b>

SOCIAL AND WELFARE

Lanjutan Tabel / Continued Table 2.2.3

Desa Village	Klinik/ Balai Kesehatan Clinic/Health Center		Posyandu Maternal and Child Health Center		Polindes Village Maternity	
	2017	2018	2017	2018	2017	2018
(1)	(10)	(11)	(12)	(13)	(14)	(15)
Cilangari	...	...	...	...	...	...
Sindangjaya	...	...	...	...	...	...
Bunijaya	...	...	...	...	...	...
Sirnajaya	...	...	...	...	...	...
Gununghalu	...	...	...	...	...	...
Celak	...	...	...	...	...	...
Wargasaluyu	...	...	...	...	...	...
Sukasari	...	...	...	...	...	...
Tamanjaya	...	...	...	...	...	...
<b>Kecamatan Gununghalu Gununghalu Subdistrict</b>	...	...	...	...	...	...

Sumber : Kemeterian Kesehatan, Profil Kesehatan Indonesia  
 Source : Ministry of Health, Health Profile of Indonesia

## 2.2 AGAMA DAN SOSIAL LAINNYA/ RELIGION AND OTHER SOCIAL AFFAIRS

**Tabel 2.3.1 Jumlah Penduduk Menurut Desa dan Agama yang Dianut, 2018**  
**Table Population by Sub District and Religion, 2018**

Desa <i>Village</i>	Islam <i>Islam</i>	Protestan <i>Protestant</i>	Katolik <i>Catholic</i>	Hindu <i>Hindu</i>	Budha <i>Buddha</i>	Lainnya <i>Others</i>
(1)	(2)	(3)	(4)	(5)	(6)	(7)
Cilangari	9 235	-	-	-	-	-
Sindangjaya	4 571	-	-	-	-	-
Bunijaya	10 040	2	-	-	-	-
Sirnajaya	12 169	-	-	-	-	-
Gununghalu	12 298	-	-	-	-	-
Celak	9 356	-	-	-	-	-
Wargasaluyu	6 848	-	-	-	-	-
Sukasari	5 794	-	-	-	-	-
Tamanjaya	7 267	-	-	-	-	-
<b>Kecamatan Gununghalu Gununghalu Subdistrict</b>	77 578	2	-	-	-	-

Sumber : Basis Data Pembangunan Kabupaten Bandung Barat, 2018  
 Source : Database of Development of Bandung Barat Regency, 2018

**Tabel 2.3.2 Jumlah Tempat Peribadatan Menurut Desa, 2018**  
**Table Number of Places of Worship by Villages and Religion, 2018**

<b>Desa</b> <i>Village</i>	<b>Masjid</b> <i>Mosque</i>	<b>Mushola</b> <i>Pray Room</i>	<b>Gereja</b> <b>Protestan</b> <i>Protestan Church</i>	<b>Gereja</b> <b>Katolik</b> <i>Katolik Church</i>	<b>Pura</b> <i>Temple</i>	<b>Vihara</b>
(1)	(2)	(3)	(4)	(5)	(6)	(7)
Cilangari	34	210	-	-	-	-
Sindangjaya	25	151	-	-	-	-
Bunijaya	25	124	-	-	-	-
Sirnajaya	47	130	-	-	-	-
Gununghalu	37	91	-	-	-	-
Celak	26	20	-	-	-	-
Wargasaluyu	24	40	-	-	-	-
Sukasari	23	41	-	-	-	-
Tamanjaya	26	106	-	-	-	-
<b>Kecamatan</b> <b>Gununghalu</b> <i>Gununghalu Subdistrict</i>	267	913	-	-	-	-

Sumber : Basis Data Pembangunan Kabupaten Bandung Barat, 2018  
 Source : Database of Development of Bandung Barat Regency, 2018

**3. PERTANIAN, KEHUTANAN, PETERNAKAN, DAN  
PERIKANAN**  
***AGRICULTURE, FORESTY, LIVESTOCK, AND FISHERY***

<https://bandung.go.id>





Ulasan	<i>Description</i>
<p>2. Sektor pertanian merupakan sektor yang paling berpotensi di Kecamatan Gununghalu. Kegiatan pertanian terbesar adalah pertanian tanaman pangan. Selain itu, tanaman hortikultura juga berpotensi. Tanaman tersebut adalah Cabai, kentang, kubis, petsai, dan tomat.</p>	<p>2. <i>The agricultural sector is the most potential sector in Gununghalu District. The biggest agricultural activity is food crop agriculture. In addition, horticultural plants are also potential. These plants are chili, potatoes, cabbage, Chinese cabbage, and tomatoes.</i></p>

**3.1 HORTIKULTURA/ HORTICULTURE**

**Tabel 3.1.1 Luas Panen Tanaman Sayuran Menurut Desa dan Jenis Tanaman (ha), 2017-2018**  
**Table 3.1.1 Harvested Area of Vegetables by Village and Kind of Plant (ha), 2017-2018**

Desa Village	Bawang Merah Shallot		Cabai Chilli		Kentang Potato		Kubis Cabbage	
	2017	2018	2017	2018	2017	2018	2017	2018
	(1)	(2)	(3)	(4)	(5)	(6)	(7)	(8)
Cilangari	-	-	...	...	...	-	...	-
Sindangjaya	-	-	...	...	...	-	...	-
Bunijaya	-	-	...	...	...	-	...	-
Sirnajaya	-	-	...	...	...	-	...	-
Gununghalu	-	-	...	...	...	-	...	-
Celak	-	-	...	...	...	-	...	-
Wargasaluyu	-	-	...	...	...	-	...	-
Sukasari	-	-	...	...	...	-	...	-
Tamanjaya	-	-	...	...	...	-	...	-
<b>Kecamatan Gununghalu</b>	-	-	<b>42</b>	<b>44</b>	<b>2</b>	-	<b>9</b>	<b>7</b>
<i>Gununghalu Subdistrict</i>								

Lanjutan Tabel / *Continued Table* 3.1.1

Desa <i>Village</i>	Petai <i>Chinese Cabbage</i>		Tomat <i>Tomato</i>		Wortel <i>Carrot</i>	
	2017	2018	2017	2018	2017	2018
(1)	(10)	(11)	(12)	(13)	(14)	(15)
Cilangari	...	...	...	...	...	...
Sindangjaya	...	...	...	...	...	...
Bunijaya	...	...	...	...	...	...
Sirnajaya	...	...	...	...	...	...
Gununghalu	...	...	...	...	...	...
Celak	...	...	...	...	...	...
Wargasaluyu	...	...	...	...	...	...
Sukasari	...	...	...	...	...	...
Tamanjaya	...	...	...	...	...	...
<b>Kecamatan Gununghalu</b>						
<i>Gununghalu</i>	<b>10</b>	<b>12</b>	<b>5</b>	<b>5</b>	...	...
<i>Subdistrict</i>						

Sumber : BPS, Statistik Pertanian Hortikultura SPH-SBS

Source : BPS-Statistics Indonesia, Agricultural Statistic for Horticulture SPH-SBS

**Tabel 3.1.2** **Produksi Tanaman Sayuran Menurut Desa dan Jenis Tanaman (ton), 2017-2018**  
**Table** **Production of Vegetables by Sub District and Kind of Plant (ton), 2017-2018**

Desa Village	Bawang Merah Shallot		Cabai Chili		Kentang Potato		Kubis Cabbage	
	2017	2018	2017	2018	2017	2018	2017	2018
	(1)	(2)	(3)	(4)	(5)	(6)	(7)	(8)
Cilangari	...	...	...	...	...	...	...	...
Sindangjaya	...	...	...	...	...	...	...	...
Bunijaya	...	...	...	...	...	...	...	...
Sirnajaya	...	...	...	...	...	...	...	...
Gununghalu	...	...	...	...	...	...	...	...
Celak	...	...	...	...	...	...	...	...
Wargasaluyu	...	...	...	...	...	...	...	...
Sukasari	...	...	...	...	...	...	...	...
Tamanjaya	...	...	...	...	...	...	...	...
<b>Kecamatan Gununghalu Gununghalu Subdistrict</b>	...	...	3 962	12 830	360	-	1 030	800

PERTANIAN, KEHUTANAN, PETERNAKAN, DAN PERIKANAN

Lanjutan Tabel / *Continued Table* 3.1.2

Desa <i>Village</i>	Petsai <i>Chinese Cabbage</i>		Tomat <i>Tomato</i>		Wortel <i>Carrot</i>	
	2017	2018	2017	2018	2017	2018
(1)	(10)	(11)	(12)	(13)	(14)	(15)
Cilangari	...	...	...	...	...	...
Sindangjaya	...	...	...	...	...	...
Bunijaya	...	...	...	...	...	...
Sirnajaya	...	...	...	...	...	...
Gununghalu	...	...	...	...	...	...
Celak	...	...	...	...	...	...
Wargasaluyu	...	...	...	...	...	...
Sukasari	...	...	...	...	...	...
Tamanjaya	...	...	...	...	...	...
<b>Kecamatan Gununghalu</b>						
<i>Gununghalu</i>	1 290	1 000	430	1 900	...	...
<i>Subdistrict</i>						

Sumber : BPS, Statistik Pertanian Hortikultura SPH-SBS

Source : BPS-Statistics Indonesia, Agricultural Statistic for Horticulture SPH-SBS

**Tabel 3.1.3 Luas Panen Tanaman Sayuran dan Buah-Buahan Semusim Menurut Jenis Tanaman (ha), 2015-2018**  
**Table** *Harvested Area of Seasonal Vegetables and Fruits by Kind of Plant (ha), 2015-2018*

Jenis Tanaman <i>Kind Of Plants</i>	2015	2016	2017	2018
(1)	(2)	(3)	(4)	(5)
Bawang Daun/ <i>wrench onion</i>	...	...	...	...
Bawang merah/ <i>shallot</i>	...	...	...	...
Bawang putih/ <i>garlic</i>	...	...	...	...
Bayam/ <i>spinach</i>	...	...	...	...
Buncis/ <i>Green bean</i>	...	...	...	...
Cabai besar/ <i>Chili</i>	...	...	...	...
Cabai rawit / <i>Chili</i>	...	...	...	...
Cabai/ <i>Chili</i>	...	...	...	...
Jamur/ <i>mushroom</i>	...	...	...	...
Kacang merah / <i>Red bean</i>	...	...	...	...
Kacang panjang/ <i>long bean</i>	...	...	...	...
Kangkung / <i>Kangkong</i>	...	...	...	...
Kembang kol / <i>Cauliflower</i>	...	...	...	...
Kentang / <i>potato</i>	...	...	...	...
Ketimun / <i>Cucumber</i>	...	...	...	...
Kubis / <i>Cabbage</i>	...	...	...	...
Labu siam / <i>Chayote</i>	...	...	...	...
Lobak / <i>Radish</i>	...	...	...	...
Paprika/ <i>Bell pepper</i>	...	...	...	...
Petsai / <i>Chinese Cabbage</i>	...	...	...	...
Terung/ <i>Eggplant</i>	...	...	...	...
Tomat / <i>Tomato</i>	...	...	...	...
Wortel/ <i>Carrot</i>	...	...	...	...
Blewah / <i>Canaloupe</i>	...	...	...	...
Melon / <i>Melon</i>	...	...	...	...
Semangka / <i>Watermelon</i>	...	...	...	...
Stroberi/ <i>Starwberry</i>	...	...	...	...

Sumber : BPS, Statistik Pertanian Hortikultura SPH-SBS/

Source : BPS-Statistics Indonesia, Agricultural Statistic for Horticulture SPH-SBS

**Tabel 3.1.4 Produksi Tanaman Sayuran dan Buah-Buahan Semusim Menurut Jenis Tanaman (ton), 2015-2018**  
**Table Production of Seasonal Vegetables and Fruits by Kind of Plant (ton), 2015-2018**

Jenis Tanaman Kind Of Plants	2015	2016	2017	2018
(1)	(2)	(3)	(4)	(5)
Bawang Daun/ <i>wrench onion</i>	...	...	...	...
Bawang merah/ <i>shallot</i>	...	...	...	...
Bawang putih/ <i>garlic</i>	...	...	...	...
Bayam/ <i>spinach</i>	...	...	...	...
Buncis/ <i>Green bean</i>	...	...	...	...
Cabai besar/ <i>Chili</i>	...	...	...	...
Cabai rawit / <i>Chili</i>	...	...	...	...
Cabai/ <i>Chili</i>	...	...	...	...
Jamur/ <i>mushroom</i>	...	...	...	...
Kacang merah / <i>Red bean</i>	...	...	...	...
Kacang panjang/ <i>long bean</i>	...	...	...	...
Kangkung / <i>Kangkong</i>	...	...	...	...
Kembang kol / <i>Cauliflower</i>	...	...	...	...
Kentang / <i>potato</i>	...	...	...	...
Ketimun / <i>Cucumber</i>	...	...	...	...
Kubis / <i>Cabbage</i>	...	...	...	...
Labu siam / <i>Chayote</i>	...	...	...	...
Lobak / <i>Radish</i>	...	...	...	...
Paprika/ <i>Bell pepper</i>	...	...	...	...
Petsai / <i>Chinese Cabbage</i>	...	...	...	...
Terung/ <i>Eggplant</i>	...	...	...	...
Tomat / <i>Tomato</i>	...	...	...	...
Wortel/ <i>Carrot</i>	...	...	...	...
Blewah / <i>Canaloupe</i>	...	...	...	...
Melon / <i>Melon</i>	...	...	...	...
Semangka / <i>Watermelon</i>	...	...	...	...
Stroberi/ <i>Starwberry</i>	...	...	...	...

Sumber : BPS, Statistik Pertanian Hortikultura SPH-SBS/

Source : BPS-Statistics Indonesia, Agricultural Statistic for Horticulture SPH-SBS

**Tabel** 3.1.5 Luas Panen Tanaman Biofarmaka Menurut Desa dan Jenis tanaman (m<sup>2</sup>), 2017 dan 2018  
**Table** *Harvested Area of Medical Plants by Villages and Kind of Plant (m<sup>2</sup>), 2017-2018*

Desa Village	Jahe Ginger		Laos/Lengkuas Galangal	
	2017	2018	2017	2018
(1)	(2)	(3)	(4)	(5)
Cilangari	...	...	...	...
Sindangjaya	...	...	...	...
Bunijaya	...	...	...	...
Sirnajaya	...	...	...	...
Gununghalu	...	...	...	...
Celak	...	...	...	...
Wargasaluyu	...	...	...	...
Sukasari	...	...	...	...
Tamanjaya	...	...	...	...
<b>Kecamatan Gununghalu Gununghalu Subdistrict</b>	<b>8 000</b>	<b>6 000</b>	<b>400</b>	<b>300</b>



PERTANIAN, KEHUTANAN, PETERNAKAN, DAN PERIKANAN

Lanjutan Tabel / *Continued Table* 3.1.5

Desa <i>Village</i>	Kencur <i>East Indian Galangal</i>		Kunyit <i>Turmeric</i>	
	2017	2018	2017	2018
(1)	(6)	(7)	(8)	(9)
Cilangari	...	...	...	...
Sindangjaya	...	...	...	...
Bunijaya	...	...	...	...
Sirnajaya	...	...	...	...
Gununghalu	...	...	...	...
Celak	...	...	...	...
Wargasaluyu	...	...	...	...
Sukasari	...	...	...	...
Tamanjaya	...	...	...	...
<b>Kecamatan Gununghalu</b> <i>Gununghalu Subdistrict</i>	<b>160</b>	<b>480</b>	<b>13 600</b>	<b>12 400</b>

Sumber : BPS, Statistik Pertanian Hortikultura SPH-SBS/

Source : BPS-Statistics Indonesia, Agricultural Statistic for Horticulture SPH-SBS

**Tabel** 3.1.6 **Produksi Tanaman Biofarmaka Menurut Desa dan Jenis tanaman (kg), 2017 dan 2018**  
**Table** *Production of Medical Plants by Villages and Kind of Plant (kg), 2017-2018*

Desa Village	Jahe Ginger		Laos/Lengkuas Galangal	
	2017	2018	2017	2018
(1)	(2)	(3)	(4)	(5)
Cilangari	...	...	...	...
Sindangjaya	...	...	...	...
Bunijaya	...	...	...	...
Sirnajaya	...	...	...	...
Gununghalu	...	...	...	...
Celak	...	...	...	...
Wargasaluyu	...	...	...	...
Sukasari	...	...	...	...
Tamanjaya	...	...	...	...
<b>Kecamatan Gununghalu</b> <i>Gununghalu Subdistrict</i>	<b>15 000</b>	<b>12 000</b>	<b>1 500</b>	<b>1 000</b>

PERTANIAN, KEHUTANAN, PETERNAKAN, DAN PERIKANAN

Lanjutan Tabel / *Continued Table* 3.1.6

Desa <i>Village</i>	Kencur <i>East Indian Galangal</i>		Kunyit <i>Turmeric</i>	
	2017	2018	2017	2018
(1)	(6)	(7)	(8)	(9)
Cilangari	...	...	...	...
Sindangjaya	...	...	...	...
Bunijaya	...	...	...	...
Sirnajaya	...	...	...	...
Gununghalu	...	...	...	...
Celak	...	...	...	...
Wargasaluyu	...	...	...	...
Sukasari	...	...	...	...
Tamanjaya	...	...	...	...
<b>Kecamatan Gununghalu</b> <i>Gununghalu Subdistrict</i>	<b>240</b>	<b>240</b>	<b>13 600</b>	<b>3 600</b>

Sumber : BPS, Statistik Pertanian Hortikultura SPH-SBS/

Source : BPS-Statistics Indonesia, Agricultural Statistic for Horticulture SPH-SBS

**Tabel 3.1.7 Luas Panen Tanaman Biofarmaka Menurut Jenis tanaman (m<sup>2</sup>), 2015-2018**  
**Table 3.1.7 Harvested Area of Medical Plants by Kind of Plant (m<sup>2</sup>), 2015-2018**

Jenis Tanaman <i>Kind of Plants</i>	2015	2016	2017	2018
(1)	(2)	(3)	(4)	(5)
Dlingo / Dringo / Sweet Roat/ Calamus	...	...	...	...
Jahe/ Ginger	...	...	...	...
Kapulaga/ Java Cardamon	...	...	...	...
Keji Beling/ Kecibeling/ <i>Strobilanthes crisper</i>	...	...	...	...
Kencur/ East Indian <i>Galangal</i>	...	...	...	...
Kunyit/ Turmeric	...	...	...	...
Laos/Lengkuas /Galangal	...	...	...	...
Lempuyang / zinger <i>Aromaticum</i>	...	...	...	...
Lidah buaya/ <i>Oliviera</i>	...	...	...	...
Mahkota dewa / <i>God's crown</i>	...	...	...	...
Mengkudu/Pace / <i>Indoan Mulberry</i>	...	...	...	...
Sambiloto/ <i>King of Bitter</i>	...	...	...	...
Temuireng / <i>Black Turmeric</i>	...	...	...	...
Temukunci/ <i>Chinese Keys</i>	...	...	...	...
Temulawak / <i>Java Turmeric</i>	...	...	...	...

Sumber : BPS, Statistik Pertanian Hortikultura SPH-SBS/

Source : BPS-Statistics Indonesia, Agricultural Statistic for Horticulture SPH-SBS

**Tabel 3.1.8 Produksi Tanaman Biofarmaka Jenis tanaman (kg), 2015-2018**  
**Table Production of Medical Plants by Kind of Plant (kg), 2015-2018**

Jenis Tanaman <i>Kind of Plants</i>	2015	2016	2017	2018
(1)	(2)	(3)	(4)	(5)
Dlingo / Dringo / <i>Sweet Roat/ Calamus</i>	...	...	...	...
Jahe/ <i>Ginger</i>	...	...	...	...
Kapulaga/ <i>Java Cardamon</i>	...	...	...	...
Keji Beling/ <i>Kecibeling/ Strobilanthes crisper</i>	...	...	...	...
Kencur/ <i>East Indian Galangal</i>	...	...	...	...
Kunyit/ <i>Turmeric</i>	...	...	...	...
Laos/Lengkuas / <i>Galangal</i>	...	...	...	...
Lempuyang / <i>zinger Aromaticum</i>	...	...	...	...
Lidah buaya/ <i>Oliviera</i>	...	...	...	...
Mahkota dewa / <i>God's crown</i>	...	...	...	...
Mengkudu/Pace / <i>Indoan Mulberry</i>	...	...	...	...
Sambiloto/ <i>King of Bitter</i>	...	...	...	...
Temuireng / <i>Black Turmeric</i>	...	...	...	...
Temukunci/ <i>Chinese Keys</i>	...	...	...	...
Temulawak / <i>Java Turmeric</i>	...	...	...	...

Sumber : BPS, Statistik Pertanian Hortikultura SPH-SBS/

Source : BPS-Statistics Indonesia, Agricultural Statistic for Horticulture SPH-SBS

**Tabel 3.1.9** Luas Panen Tanaman Hias Menurut Desa dan Jenis Tanaman (m<sup>2</sup>), 2017-2018  
**Table** *Harvested Area of Ornamental Plants by Villages and Kind of Plant (m<sup>2</sup>), 2017-2018*

Desa Village	Anggrek Orchid		Krisan Chrysantemum	
	2017	2018	2017	2018
(1)	(2)	(3)	(4)	(5)
Cilangari	-	-	-	-
Sindangjaya	-	-	-	-
Bunijaya	-	-	-	-
Sirnajaya	-	-	-	-
Gununghalu	-	-	-	-
Celak	-	-	-	-
Wargasaluyu	-	-	-	-
Sukasari	-	-	-	-
Tamanjaya	-	-	-	-
<b>Kecamatan Gununghalu</b> <i>Gununghalu Subdistrict</i>	-	-	-	-

Lanjutan Tabel/ *ontinued Table 3.1.9*

Desa Village	Mawar Rose		Sedap Malam Tuberose	
	2017	2018	2017	2018
(1)	(6)	(7)	(8)	(9)
Cilangari	-	-	...	...
Sindangjaya	-	-	...	...
Bunijaya	-	-	...	...
Sirnajaya	-	-	...	...
Gununghalu	-	-	...	...
Celak	-	-	...	...
Wargasaluyu	-	-	...	...
Sukasari	-	-	...	...
Tamanjaya	-	-	...	...
<b>Kecamatan Gununghalu</b>				
<i>Gununghalu Subdistrict</i>	-	-	<b>1 200</b>	<b>1 200</b>

Sumber : BPS, Statistik Pertanian Hortikultura SPH-TH

Source : BPS-Statistics Indonesia, Agricultural Statistic for Horticulture SPH-TH

**Tabel 3.1.10** Produksi Tanaman Hias Menurut Desa dan Jenis Tanaman (tangkai), 2017-2018  
**Table** Production of Ornamental Plants by Villages and Kind of Plant (stalks), 2017-2018

Desa Village	Anggrek Orchid		Krisan Chrysantemum	
	2017	2018	2017	2018
(1)	(2)	(3)	(4)	(5)
Cilangari	-	-	-	-
Sindangjaya	-	-	-	-
Bunijaya	-	-	-	-
Sirnajaya	-	-	-	-
Gununghalu	-	-	-	-
Celak	-	-	-	-
Wargasaluyu	-	-	-	-
Sukasari	-	-	-	-
Tamanjaya	-	-	-	-
<b>Kecamatan Gununghalu</b> <i>Gununghalu Subdistrict</i>	-	-	-	-



Lanjutan Tabel/ *ontinued Table* 3.1.10

Desa <i>Village</i>	Mawar <i>Rose</i>		Sedap Malam <i>Tuberosa</i>	
	2017	2018	2017	2018
(1)	(6)	(7)	(8)	(9)
Cilangari	-	-	...	...
Sindangjaya	-	-	...	...
Bunijaya	-	-	...	...
Sirnajaya	-	-	...	...
Gununghalu	-	-	...	...
Celak	-	-	...	...
Wargasaluyu	-	-	...	...
Sukasari	-	-	...	...
Tamanjaya	-	-	...	...
<b>Kecamatan Gununghalu</b> <i>Gununghalu Subdistrict</i>	-	-	<b>1 200</b>	<b>2 000</b>

Sumber : BPS, Statistik Pertanian Hortikultura SPH-TH

Source : BPS-Statistics Indonesia, Agricultural Statistic for Horticulture SPH-TH

**Tabel 3.1.11 Luas Panen Tanaman Hias Menurut Jenis tanaman (m<sup>2</sup>), 2015-2018**  
**Table** **Harvested Area of Ornamental Plants by Kind of Plant (m<sup>2</sup>), 2015-2018**

Jenis Tanaman Kind of Plants	2015	2016	2017	2018
(1)	(2)	(3)	(4)	(5)
Adenium (kamboja jepang)/ <i>adenium obesum</i>	...	...	...	...
Aglaonema/ <i>Chinese evergreens</i>	...	...	...	...
Anggrek / <i>Orchid</i>	...	...	...	...
Anthurium bunga / <i>Flamingo Lily Flower</i>	...	...	...	...
Anthurium daun / <i>Laceleaf</i>	...	...	...	...
Anyelir/ <i>Carnation</i>	...	...	...	...
Caladium / <i>Herat of Jesus</i>	...	...	...	...
Cordyline/ <i>Cordyline</i>	...	...	...	...
Diffenbachia/ <i>Dumb canes</i>	...	...	...	...
Dracaena / <i>Dracaena</i>	...	...	...	...
Euphorbia/ <i>Spurges</i>	...	...	...	...
Gladiol/ <i>Gladiol</i>	...	...	...	...
Herbras / <i>Gerbera</i>	...	...	...	...
Krisan/ <i>Chrysantemum</i>	...	...	...	...
Mawar/ <i>Rose</i>	...	...	...	...
Melati / <i>Jasmine</i>	...	...	...	...
Monstera / <i>Swiss Cheese plant</i>	...	...	...	...
Pakis/ <i>Fern</i>	...	...	...	...
Palem/ <i>Palm</i>	...	...	...	...
Pedang-pedangan / <i>Sansevieria</i>	...	...	...	...
Pisang-pisangan/ <i>Heliconia</i>	...	...	...	...
Philodendron/ <i>Philodendron</i>	...	...	...	...
Sedap malam / <i>Tuberose</i>	...	...	...	...
Soka/ <i>ixora</i>	...	...	...	...

Sumber : BPS, Statistik Pertanian Hortikultura SPH-TH

Source : BPS-Statistics Indonesia, Agricultural Statistic for Horticulture SPH-TH

**Tabel 3.1.12** **Produksi Tanaman Hias Menurut Jenis tanaman (tangkai), 2015-2018**  
**Table** **Production of Ornamental Plants by Kind of Plant (stalks), 2015-2018**

Jenis Tanaman <i>Kind of Plants</i>	2015	2016	2017	2018
(1)	(2)	(3)	(4)	(5)
Adenium (kamboja jepang)/ <i>adenium obesum</i>	...	...	...	...
Aglaonema/ <i>Chinese evergreens</i>	...	...	...	...
Anggrek / <i>Orchid</i>	...	...	...	...
Anthurium bunga / <i>Flamingo Lily Flower</i>	...	...	...	...
Anthurium daun / <i>Laceleaf</i>	...	...	...	...
Anyelir/ <i>Carnation</i>	...	...	...	...
Caladium / <i>Herat of Jesus</i>	...	...	...	...
Cordyline/ <i>Cordyline</i>	...	...	...	...
Diffenbachia/ <i>Dumb canes</i>	...	...	...	...
Dracaena / <i>Dracaena</i>	...	...	...	...
Euphorbia/ <i>Spurges</i>	...	...	...	...
Gladiol/ <i>Gladiol</i>	...	...	...	...
Herbras / <i>Gerbera</i>	...	...	...	...
Krisan/ <i>Chrysantemum</i>	...	...	...	...
Mawar/ <i>Rose</i>	...	...	...	...
Melati / <i>Jasmine</i>	...	...	...	...
Monstera / <i>Swiss Cheese plant</i>	...	...	...	...
Pakis/ <i>Fern</i>	...	...	...	...
Palem/ <i>Palm</i>	...	...	...	...
Pedang-pedangan / <i>Sansevieria</i>	...	...	...	...
Pisang-pisangan/ <i>Heliconia</i>	...	...	...	...
Philodendron/ <i>Philodendron</i>	...	...	...	...
Sedap malam / <i>Tuberose</i>	...	...	...	...
Soka/ <i>ixora</i>	...	...	...	...

Sumber : Dinas Pertanian dan Ketahanan Pangan Kabupaten Bandung Barat

Source : Agriculture and Food Service of Bandung Barat Regency

**Tabel 3.1.13** **Produksi Buah-Buahan Menurut Desa dan Jenis Tanaman (Ton), 2017-2018**  
**Table** **Production of Fruits by Villages and Kind of Plant (Ton), 2017-2018**

Desa Village	Mangga Mango		Durian Durian		Jeruk Orange	
	2017	2018	2017	2018	2017	2018
(1)	(2)	(3)	(4)	(5)	(6)	(7)
Cilangari	...	...	...	...	...	...
Sindangjaya	...	...	...	...	...	...
Bunijaya	...	...	...	...	...	...
Sirnajaya	...	...	...	...	...	...
Gununghalu	...	...	...	...	...	...
Celak	...	...	...	...	...	...
Wargasaluyu	...	...	...	...	...	...
Sukasari	...	...	...	...	...	...
Tamanjaya	...	...	...	...	...	...
<b>Kecamatan Gununghalu Gununghalu Subdistrict</b>	<b>1 693</b>	<b>2 152</b>	<b>193</b>	<b>368</b>	<b>12 271</b>	<b>34 200</b>

Lanjutan Tabel/ *ontinued Table* 3.1.13

Desa <i>Village</i>	Pisang <i>Banana</i>		Pepaya <i>Papaya</i>		Salak <i>Salacca</i>	
	2017	2018	2017	2018	2017	2018
(1)	(2)	(3)	(4)	(5)	(6)	(7)
Cilangari	...	...	...	...	...	...
Sindangjaya	...	...	...	...	...	...
Bunijaya	...	...	...	...	...	...
Sirnajaya	...	...	...	...	...	...
Gununghalu	...	...	...	...	...	...
Celak	...	...	...	...	...	...
Wargasaluyu	...	...	...	...	...	...
Sukasari	...	...	...	...	...	...
Tamanjaya	...	...	...	...	...	...
<b>Kecamatan Gununghalu Gununghalu Subdistrict</b>	<b>11 430</b>	<b>14 960</b>	-	-	<b>27</b>	<b>27</b>

Sumber : BPS, Statistik Pertanian Hortikultura SPH-BST

Source : BPS-Statistics Indonesia, Agricultural Statistic for Horticulture SPH-BST

**Tabel 3.1.14** Produksi Buah-Buahan dan Sayuran Tahunan Menurut Jenis Tanaman (Ton), 2015-2018  
**Table** *Production of Annual Fruits and Vegetables by Kind of Plant (Ton), 2015-2018*

Jenis Tanaman <i>Kind of Plants</i>	2015	2016	2017	2018
(1)	(2)	(3)	(4)	(5)
Alpukat / <i>avocado</i>	...	...	...	...
Anggur / <i>Grape</i>	...	...	...	...
Aple/ <i>Apple</i>	...	...	...	...
Belimbing / <i>Belimbing</i>	...	...	...	...
Duku /Langsat /kokosan/ <i>Duku</i>	...	...	...	...
Durian / <i>Durian</i>	...	...	...	...
Jambu air / <i>Rose Apfle</i>	...	...	...	...
Jabu biji/ <i>Guava</i>	...	...	...	...
Jeruk Besar / <i>Pomelo</i>	...	...	...	...
Jeruk siam/ Keprok/ <i>Tangerine/ Orange</i>	...	...	...	...
Jeruk/Orange <i>(Tangerine+Pomello)</i>	...	...	...	...
Mangga/ <i>Mango</i>	...	...	...	...
Manggis/ <i>Mangosteen</i>	...	...	...	...
Markisa/ <i>marquisa</i>	...	...	...	...
Nangka/Cempedak/ <i>Jack fruit</i>	...	...	...	...
Nanas/ <i>Pineapple</i>	...	...	...	...
Pepaya/ <i>Papaya</i>	...	...	...	...
Pisang / <i>Banana</i>	...	...	...	...
Rambutan / <i>Rambutan</i>	...	...	...	...
Salak/ <i>Salacca</i>	...	...	...	...
Sawo/Sapadilla/ <i>Star apple</i>	...	...	...	...
Sirsak/ <i>soursop</i>	...	...	...	...
Sukun/ <i>Bread Fruit</i>	...	...	...	...
Jengkol/ <i>jengkol</i>	...	...	...	...
Melinjo / <i>Melinjo</i>	...	...	...	...
Petai / <i>Twisted cluster bean</i>	...	...	...	...

Sumber : BPS, Statistik Pertanian Hortikultura SPH-BST

Source : BPS-Statistics Indonesia, Agricultural Statistic for Horticulture SPH-BST

## 3.2 PERKEBUNAN/ ESTATE CORP

**Tabel 3.2.1** Luas Areal Perkebunan Menurut Desa dan Jenis Tanaman (ha), 2017-2018  
**Table** *Planted Area of Estate Crops by Village and Type of Crops (ha), 2017-2018*

Desa Village	Kelapa Sawit <i>Palm Oil</i>		Kelapa <i>Coconut</i>		Karet <i>Rubber</i>		Kopi <i>Coffee</i>	
	2017	2018	2017	2018	2017	2018	2017	2018
(1)	(2)	(3)	(4)	(5)	(6)	(7)	(8)	(9)
Cilangari	-	-	...	...	-	-	...	...
Sindangjaya	-	-	...	...	-	-	...	...
Bunijaya	-	-	...	...	-	-	...	...
Sirnajaya	-	-	...	...	-	-	...	...
Gununghalu	-	-	...	...	-	-	...	...
Celak	-	-	...	...	-	-	...	...
Wargasaluyu	-	-	...	...	-	-	...	...
Sukasari	-	-	...	...	-	-	...	...
Tamanjaya	-	-	...	...	-	-	...	...
<b>Kecamatan Gununghalu</b>	-	-	<b>2.8</b>	<b>26</b>	-	-	<b>135.2</b>	<b>314.1</b>
<i>Gununghalu Subdistrict</i>								

AGRICULTURE, FORESTRY, LIVESTOCK AND FISHERY

Lanjutan Tabel/ *ontinued Table 3.2.1*

Desa <i>Village</i>	Kakao <i>Cocoa</i>		Tebu <i>Sugar Cane</i>		Teh <i>Tea</i>		Tembakau <i>Tobacco</i>	
	2017	2018	2017	2018	2017	2018	2017	2018
(1)	(10)	(11)	(12)	(13)	(14)	(15)	(16)	(17)
Cilangari	-	-	-	-	...	...	...	...
Sindangjaya	-	-	-	-	...	...	...	...
Bunijaya	-	-	-	-	...	...	...	...
Sirnajaya	-	-	-	-	...	...	...	...
Gununghalu	-	-	-	-	...	...	...	...
Celak	-	-	-	-	...	...	...	...
Wargasaluyu	-	-	-	-	...	...	...	...
Sukasari	-	-	-	-	...	...	...	...
Tamanjaya	-	-	-	-	...	...	...	...
<b>Kecamatan Gununghalu</b>	-	-	-	-	<b>14.8</b>	<b>111.8</b>	<b>27.8</b>	<b>30</b>
<i>Gununghalu Subdistrict</i>								

Sumber : Dinas Perkebunan Kabupaten Bandung Barat, 2018  
 Source : *Dinas Perkebunan Kabupaten Bandung Barat, 2018*



**Tabel 3.2.2** **Produksi Perkebunan Menurut Desa dan Jenis Tanaman (ton), 2017-2018**  
*Production of Estate Crops by Villages and Type of Crops (ton), 2017-2018*

Desa Village	Kelapa Sawit Palm Oil		Kelapa Coconut		Karet Rubber		Kopi Coffee	
	2017	2018	2017	2018	2017	2018	2017	2018
(1)	(2)	(3)	(4)	(5)	(6)	(7)	(8)	(9)
Cilangari	-	-	-	...	...	...	...	...
Sindangjaya	-	-	-	...	...	...	...	...
Bunijaya	-	-	-	...	...	...	...	...
Sirnajaya	-	-	-	...	...	...	...	...
Gununghalu	-	-	-	...	...	...	...	...
Celak	-	-	-	...	...	...	...	...
Wargasaluyu	-	-	-	...	...	...	...	...
Sukasari	-	-	-	...	...	...	...	...
Tamanjaya	-	-	-	...	...	...	...	...
<b>Kecamatan Gununghalu</b>								
<i>Gununghalu Subdistrict</i>	-	-	-	<b>15.97</b>	...	...	...	<b>204.72</b>

AGRICULTURE, FORESTRY, LIVESTOCK AND FISHERY

Lanjutan Tabel/ *ontinued Table 3.2.2*

Desa <i>Village</i>	Kakao <i>Cocoa</i>		Tebu <i>Sugar Cane</i>		Teh <i>Tea</i>		Tembakau <i>Tobacco</i>	
	2017	2018	2017	2018	2017	2018	2017	2018
(1)	(10)	(11)	(12)	(13)	(14)	(15)	(16)	(17)
Cilangari	-	-	-	-	-	...	...	...
Sindangjaya	-	-	-	-	-	...	...	...
Bunijaya	-	-	-	-	-	...	...	...
Sirnajaya	-	-	-	-	-	...	...	...
Gununghalu	-	-	-	-	-	...	...	...
Celak	-	-	-	-	-	...	...	...
Wargasaluyu	-	-	-	-	-	...	...	...
Sukasari	-	-	-	-	-	...	...	...
Tamanjaya	-	-	-	-	-	...	...	...
<b>Kecamatan Gununghalu</b>								
<i>Gununghalu Subdistrict</i>	-	-	-	-	-	<b>182.23</b>	-	<b>30.69</b>

Sumber : Dinas Perkebunan Kabupaten Bandung Barat, 2018

Source : *Dinas Perkebunan Kabupaten Bandung Barat, 2018*

**4. PARIWISATA**  
***TOURISM***

<https://bandungbaratkab.bps.go.id>



## Ulasan

## Description

Sektor Pariwisata di kecamatan Gununghalu mulai berkembang. Hal ini terlihat dari makin banyaknya usaha di bidang rumah makan. Rumah makan terbanyak terletak di Desa Sirnajaya yang merupakan pusat kegiatan di Kecamatan Gununghalu.

1. *The tourism sector in Gununghalu sub-district is starting to develop. This can be seen from the increasing number of businesses in the restaurant sector. Most restaurants are located in Sirnajaya Village which is the center of activity in Gununghalu District.*

<https://bandungbaratkab.bps.go.id>

**Tabel 4.1.1 Jumlah Rumah Makan/ Restoran Menurut Desa, 2015-2018**  
**Table Number of Restaurants by Villages, 2015-2018**

Desa Village	2015	2016	2017	2018
(1)	(2)	(3)	(4)	(5)
Cilangari	...	...	...	3
Sindangjaya	...	...	...	2
Bunijaya	...	...	...	4
Sirnajaya	...	...	...	8
Gununghalu	...	...	...	2
Celak	...	...	...	2
Wargasaluyu	...	...	...	-
Sukasari	...	...	...	-
Tamanjaya	...	...	...	-
<b>Kecamatan Gununghalu</b> <i>Gununghalu Subdistrict</i>	...	...	...	<b>21</b>

Sumber: Dinas Komunikasi Informatika dan Statistik. 2019

Source : Dinas Komunikasi Informatika dan Statistik. 2019



Sensus  
Penduduk  
2020

# DATA

**MENCERDASKAN BANGSA**  
**-----ENLIGHTEN NATION-----**



**BADAN PUSAT STATISTIK**  
**KABUPATEN BANDUNG BARAT**

Jl.Raya Padalarang No.763,

Telp. (022)6804400,

(022)6804411. Fax:(022)680411.

Email : [bps3217@bps.go.id](mailto:bps3217@bps.go.id)

Web : [bandungbaratkab.bps.go.id](http://bandungbaratkab.bps.go.id)